



DE VALK  
YACHT BROKERS



## SUPER VAN CRAFT 1320



DE VALK  
YACHT BROKERS

# SUPER VAN CRAFT 1320

## BROKER'S COMMENTS

Super Van Craft - a renowned yacht brand known for its high-quality, classic-style motor yachts. These yachts are appreciated both for their elegant appearance and for their excellent craftsmanship. Thanks to their traditional construction and the timeless elegance of their design, the brand has established itself as an icon of Dutch yacht building. The "EVY" has been lovingly cared for by her owner, the yacht is "like new".

*Hartmut Ross*

## SPECIFICATIONS

<b>Dimensions</b>	13.20 x 3.65 x 1.35 (m)	<b>Builder</b>	Klaassen, Voorschoten
<b>Built</b>	1973	<b>Cabins</b>	2
<b>Material</b>	Steel	<b>Berths</b>	6
<b>Engine(s)</b>	2 x DAF 575 diesel	<b>Hp/Kw</b>	2 x 105.00 (hp), 77.28 (kw)
<b>Asking price</b>	€ 255.000 (VAT Exempt)	<b>Lying</b>	contact Kiel

## CONTACT

<b>Sales office</b>	De Valk Kiel	<b>Telephone</b>	+49 1712312133
<b>Address</b>	Hermann Rennerstrasse 12 22609 Hamburg DE	<b>E-mail</b>	kiel@devalk.nl

## DISCLAIMER

These particulars are given in good faith as supplied but cannot be guaranteed.



# SUPER VAN CRAFT 1320

## GENERAL

Model	SUPER VAN CRAFT 1320
Type	motor yacht
LOA (m)	13,20
Beam (m)	3,65
Draft (m)	1,35
Air draft (m)	2,85
Air draft min (m)	2,35
Headroom (m)	1,95
Year built	1973
Launched	1973
Builder	Klaassen, Voorschoten
Country	The Netherlands
Designer	Klaassen, Voorschoten
Displacement (t)	16
Hull material	steel
Hull colour	white
Hull shape	round-bilged
Superstructure material	mahogany
Rubbing strake	steel
Deck material	steel
Deck finish	teak New 2018
Superstructure deck finish	paint Mahogany
Cockpit deck finish	teak
Antifouling (year)	Sandblasted 2023
Window frame	aluminium
Window material	glass
Deckhatch	yes
Portholes	yes
Mast can be lowered	manual Mast new 2020
Fuel tank (litre)	steel 1000



# SUPER VAN CRAFT 1320

Level indicator (fuel tank)	yes
Freshwater tank (litre)	1000
Level indicator (freshwater)	yes
Blackwater tank (litre)	Dry tank/biotank
Wheel steering	yes
Inside helm position	yes
Outside helm position	yes
More info on hull	Sandblasted 2021
More info on paintwork	New 2021

## ACCOMMODATION

Cabins	2
Berths	6
Interior	mahogany
Floor	carpet New 2023
Open cockpit	yes
Aft deck	yes
Saloon	New cushion 2023
Headroom saloon (m)	1,95
Sliding roof	manual
Heating	Ebersbächer new 2016
Heating 2	Ebersbächer new 2016
Navigation center	yes
Chart table	yes
Aft Cabin	yes
Dining room	yes
Dinette to convert into berth	yes
Opening door to cockpit	yes
Galley	yes
Countertop	plastic
Sink	stainless steel



# SUPER VAN CRAFT 1320

Cooker	calor gas
Fridge	yes
Hot water system	yes
Water pressure system	yes
Crockery	yes
Owners cabin	twin single
Bed length (m)	2,00
Wardrobe	hanging/drawers/shelves
Bathroom	yes
Toilet	en suite
Toilet system	Dry/organic
Wash basin	in the bathroom
Shower	en suite
Guest cabin 1	bunk bed
Bed length (m)	1,80
Wardrobe	hanging/drawers/shelves
Bathroom	separate
Toilet	en suite
Toilet system	manual
Wash basin	in the bathroom

## MACHINERY

No of engines	2
Make	DAF
Type	575
HP	105
kW	77.28
Fuel	diesel
Year installed	1973
Year of overhaul	General overhaul 2016
Maximum speed (kn)	10



# SUPER VAN CRAFT 1320

Cruising speed (kn)	7
Consumption (l/hr)	5
Engine hours	450
Engine cooling system	closed keelcooling
Drive	shaft
Bowthruster	electric New 2016
Exhaust	yes
Propeller type	fixed
Propeller blades	3
Shaft lubrication	New 2016 Bullfinger
Electric bilge pump	yes
Bilge alarm	yes
Electrical installation	New 2016
Start battery	2 new 2023
Service battery	4 new 2023
Bowthruster battery	New 2016
Windlass battery	yes
Battery monitor	yes
Battery charger	yes
Inverter	yes
Solar panel	yes
Shorepower	with cable
Extra info	The engine completely overhauled in 2016, Seacocks new 2023
Extra info	New in 2016 Equalizing reservoir, Filters, pumps, pipes
Extra info	New 2016 Complete electrical system, gas, water

## NAVIGATION

Compass	yes
Electric compass	yes
Depth sounder	yes
Log	yes



# SUPER VAN CRAFT 1320

VHF	yes
Rudder angle indicator	yes
Plotter/GPS	New 2022
Electronic chart(s)	yes
AIS receiver	yes
AIS transponder	yes
Radio receiver	yes
Navigation lights	yes
Searchlight	yes
Loudhailer	yes

## EQUIPMENT

Fixed windscreen	yes
Sprayhood	yes
Cockpit cover	yes
Bimini	yes
Cockpit cushions	New 2019
Cockpit table	yes
Cockpit chairs	yes
Bathing platform	New 2021
Boarding ladder	stainless steel
Transom door	yes
Gangway	yes
Deck shower	yes
Anchor	yes
Anchor chain	yes
Anchor chain	yes
Windlass	electrical New 2017
Davits	yes
Davits controls	manual
Sea railing	New 2019



# SUPER VAN CRAFT 1320

Grab rail (superstructure)	wood
Railing side opening gates	yes
Pushpit	yes
Life raft	yes
Life raft (pers)	valise (or bag) 4
Last life raft survey	New
Lifejackets	yes
Wiper	Elektric
Horn	electric
Fenders	yes
Mooring lines	yes
Spare parts	yes
Tools	yes
Cockpit speakers	yes
Speakers in salon	yes





# SUPER VAN CRAFT 1320

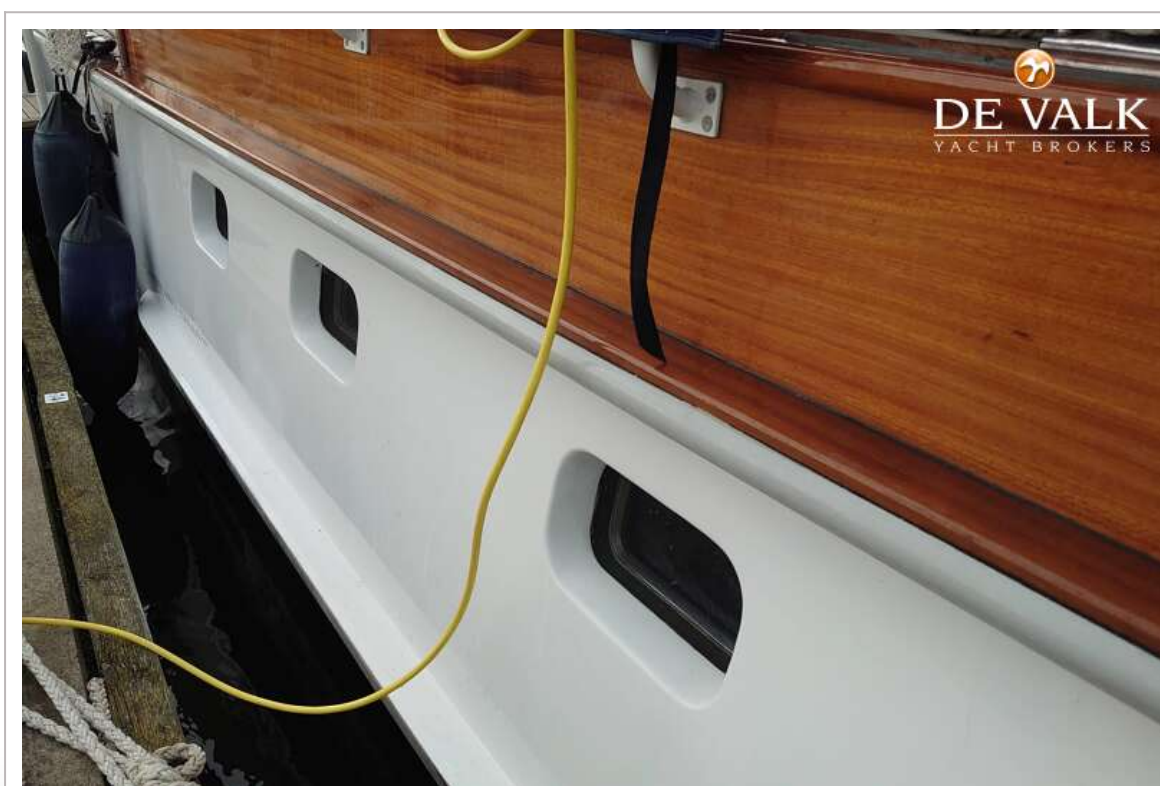


# SUPER VAN CRAFT 1320

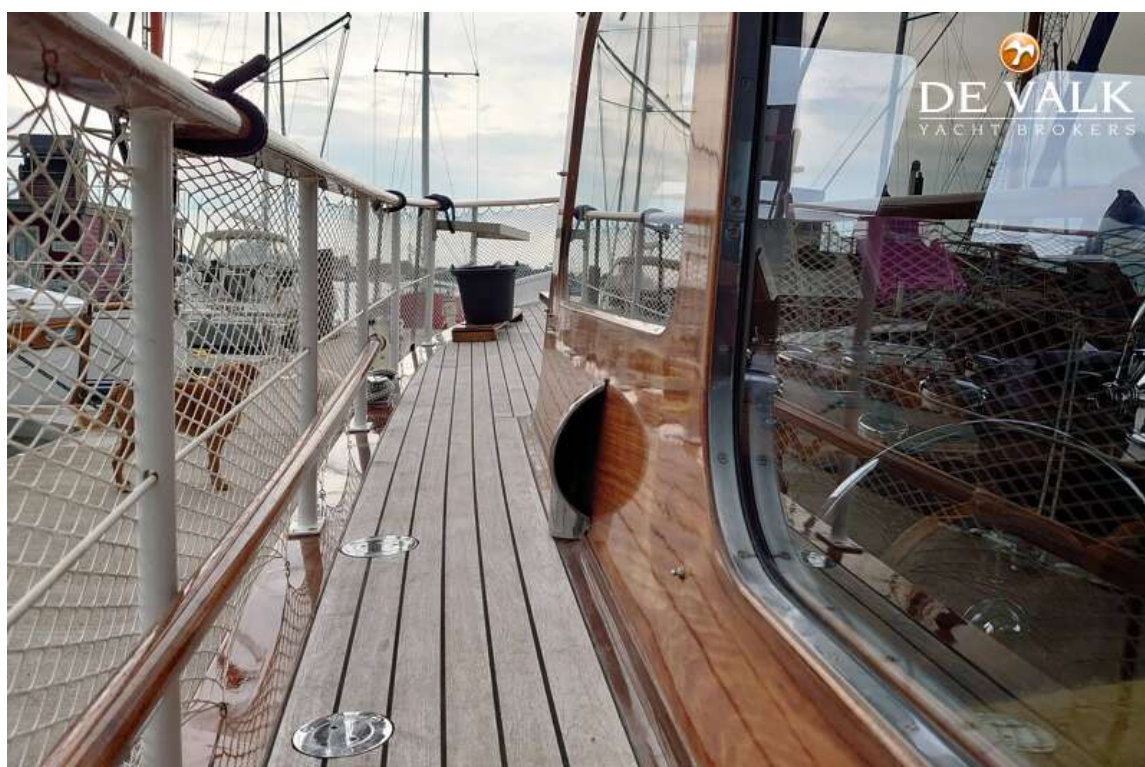




# SUPER VAN CRAFT 1320

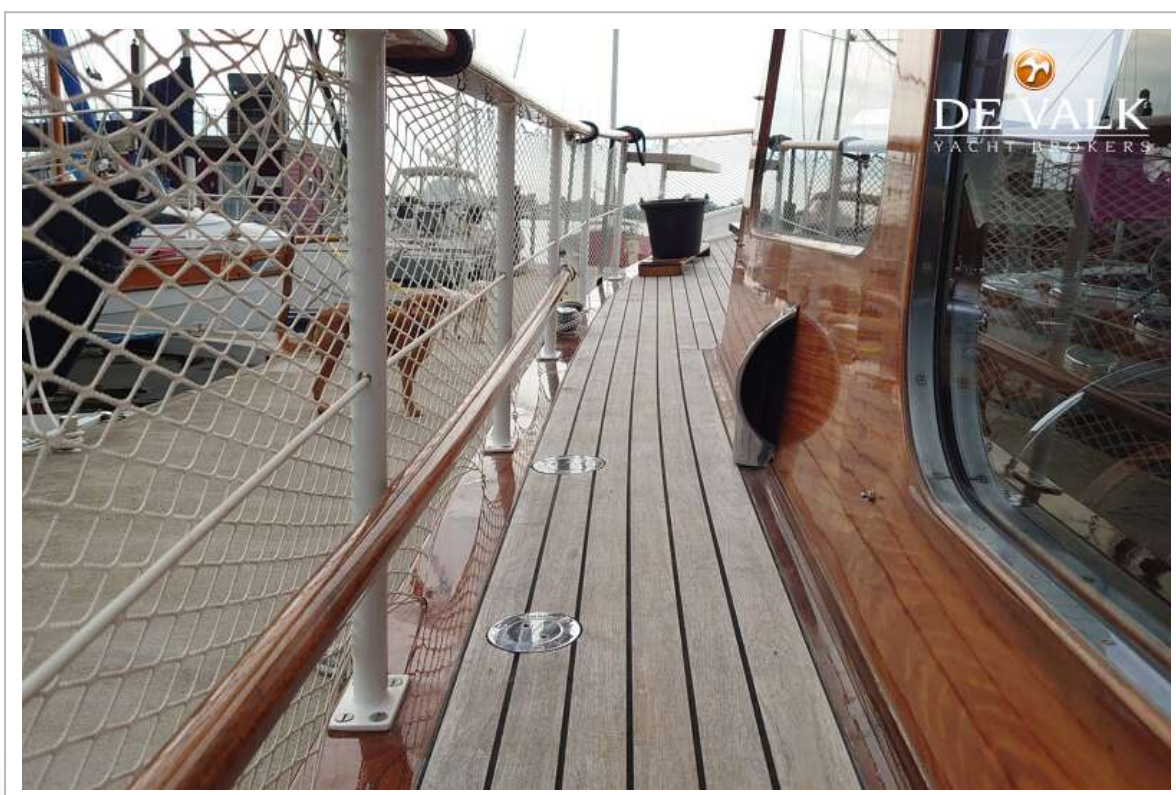


# SUPER VAN CRAFT 1320





# SUPER VAN CRAFT 1320



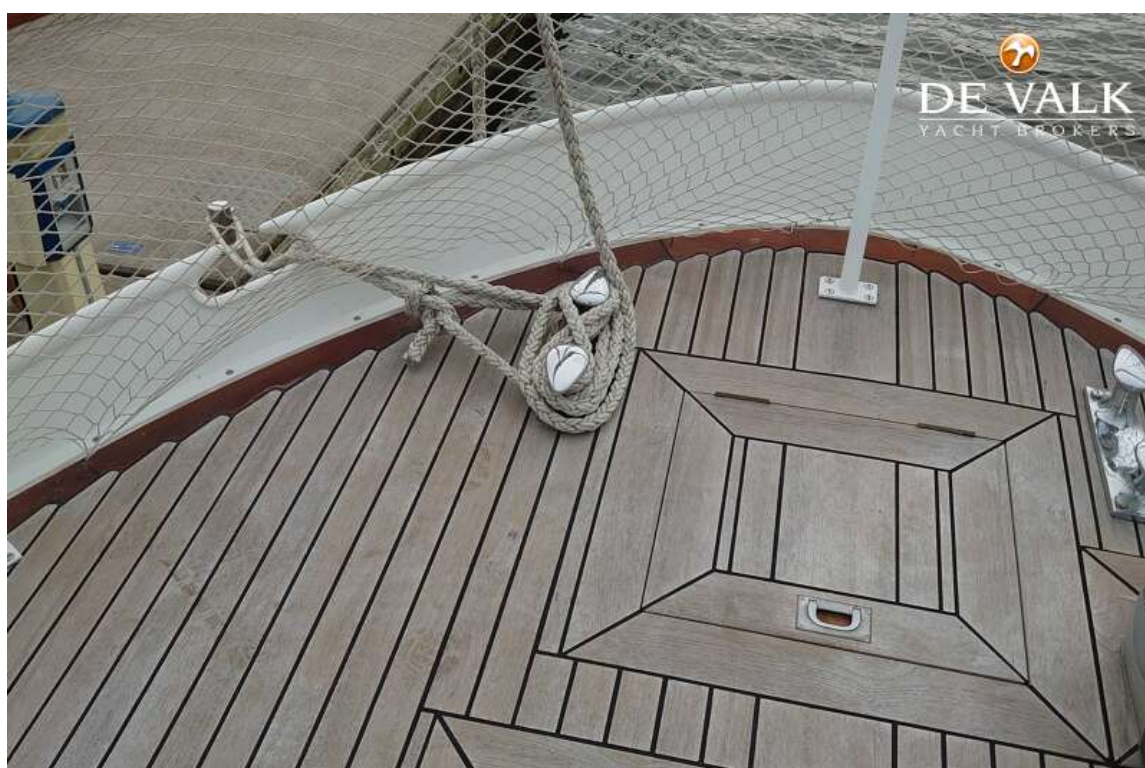
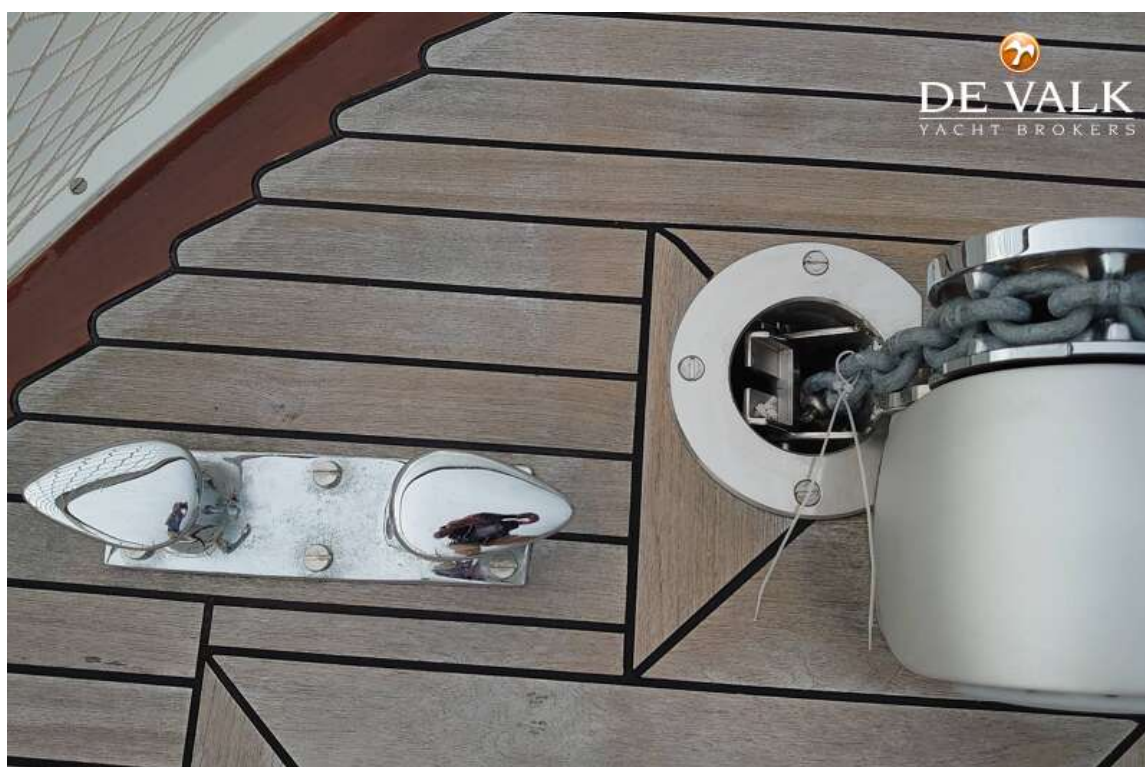


# SUPER VAN CRAFT 1320

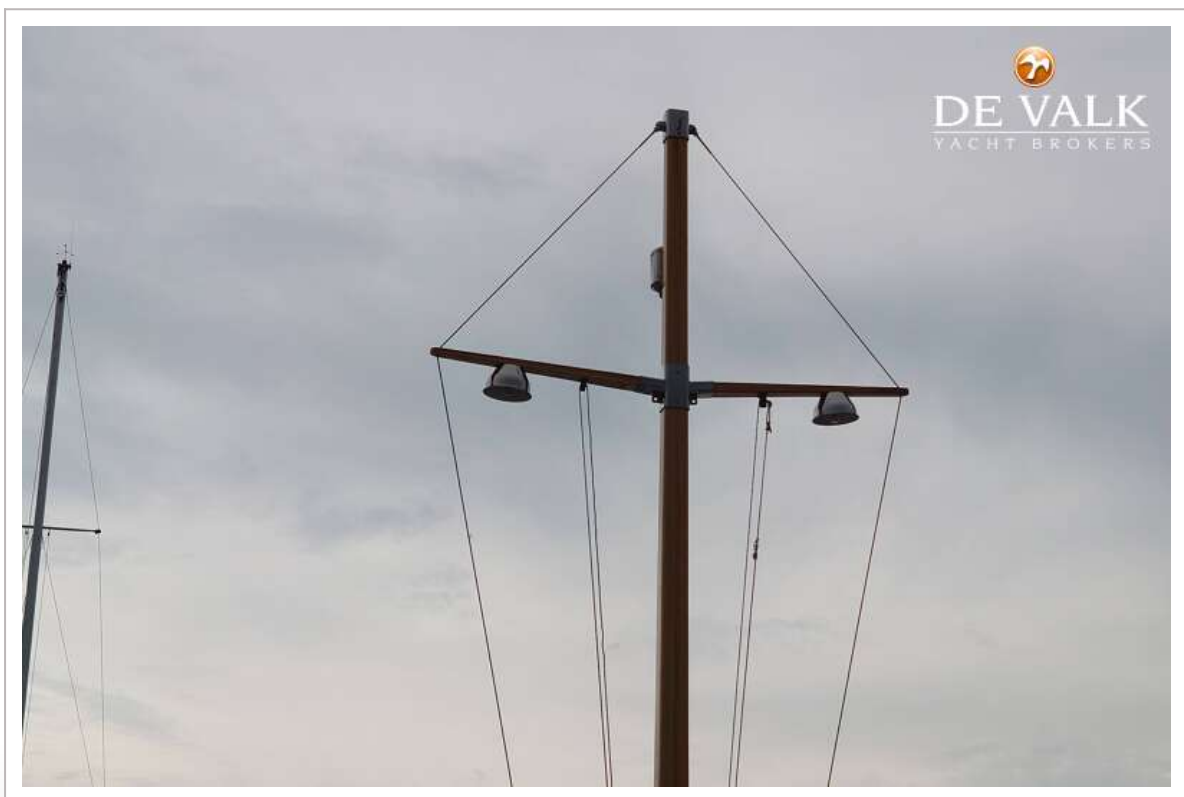
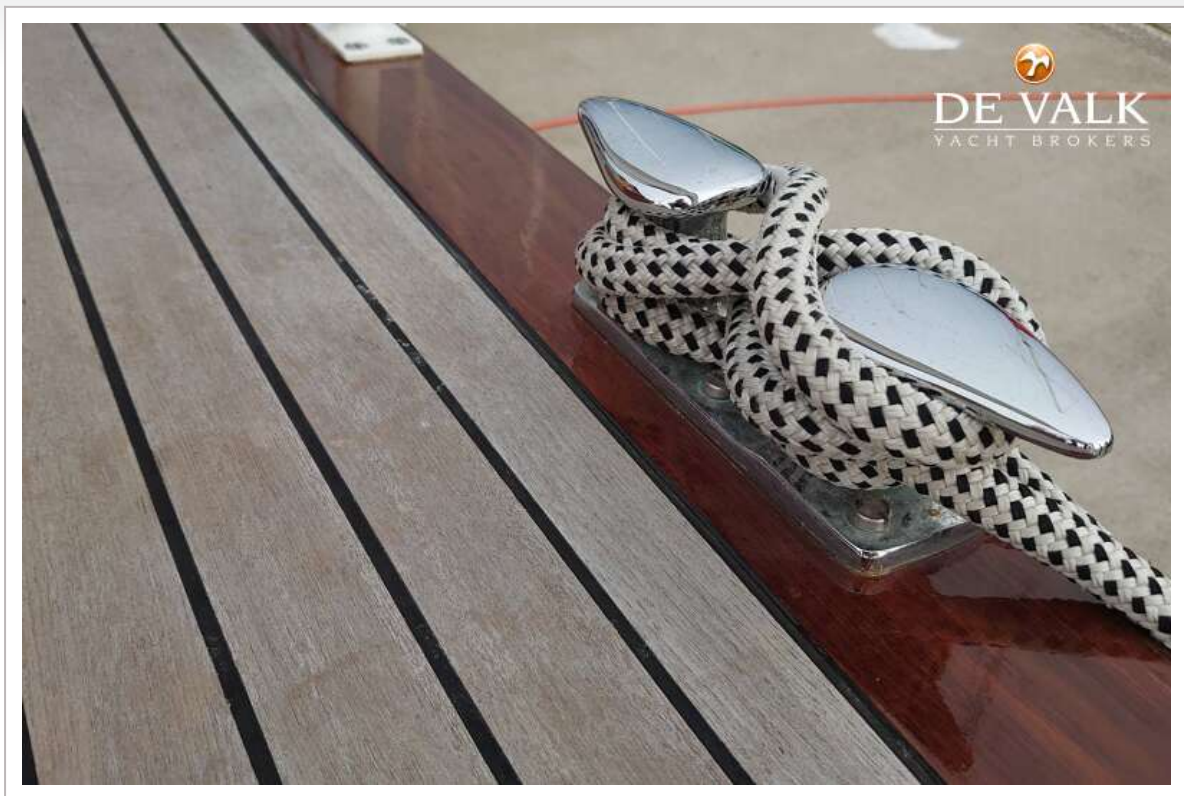




# SUPER VAN CRAFT 1320

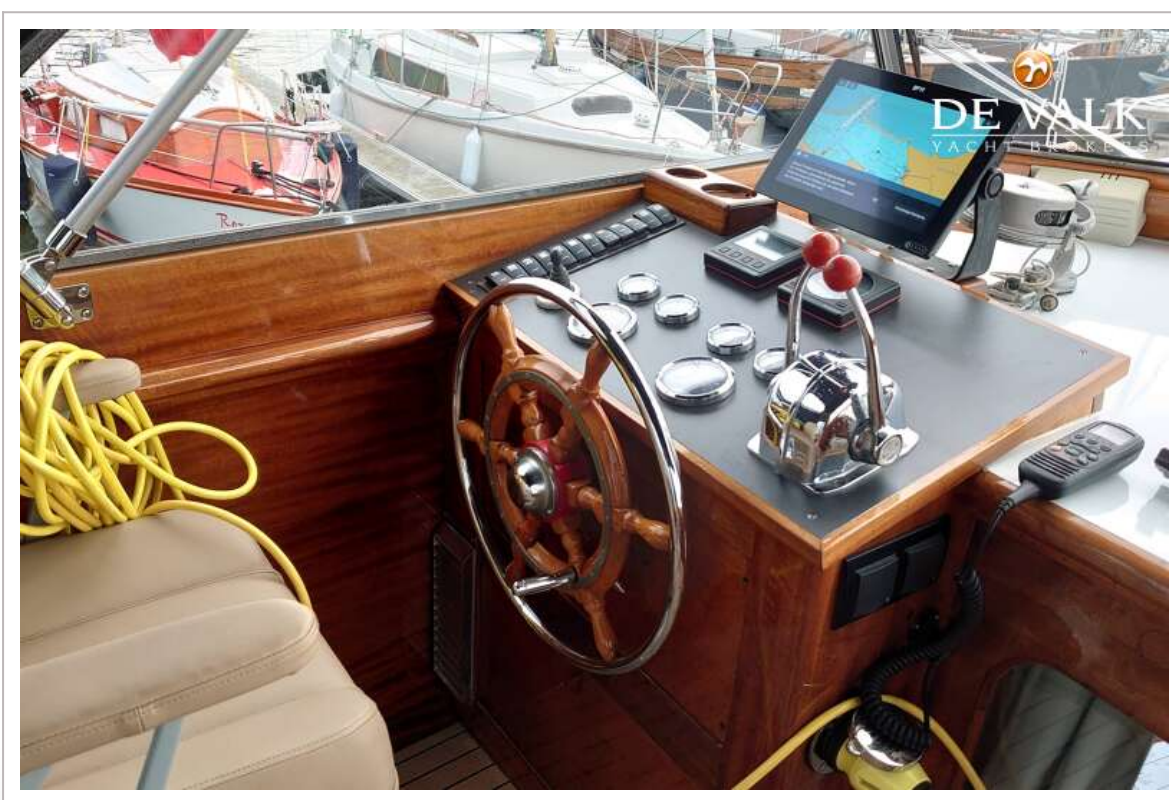


# SUPER VAN CRAFT 1320



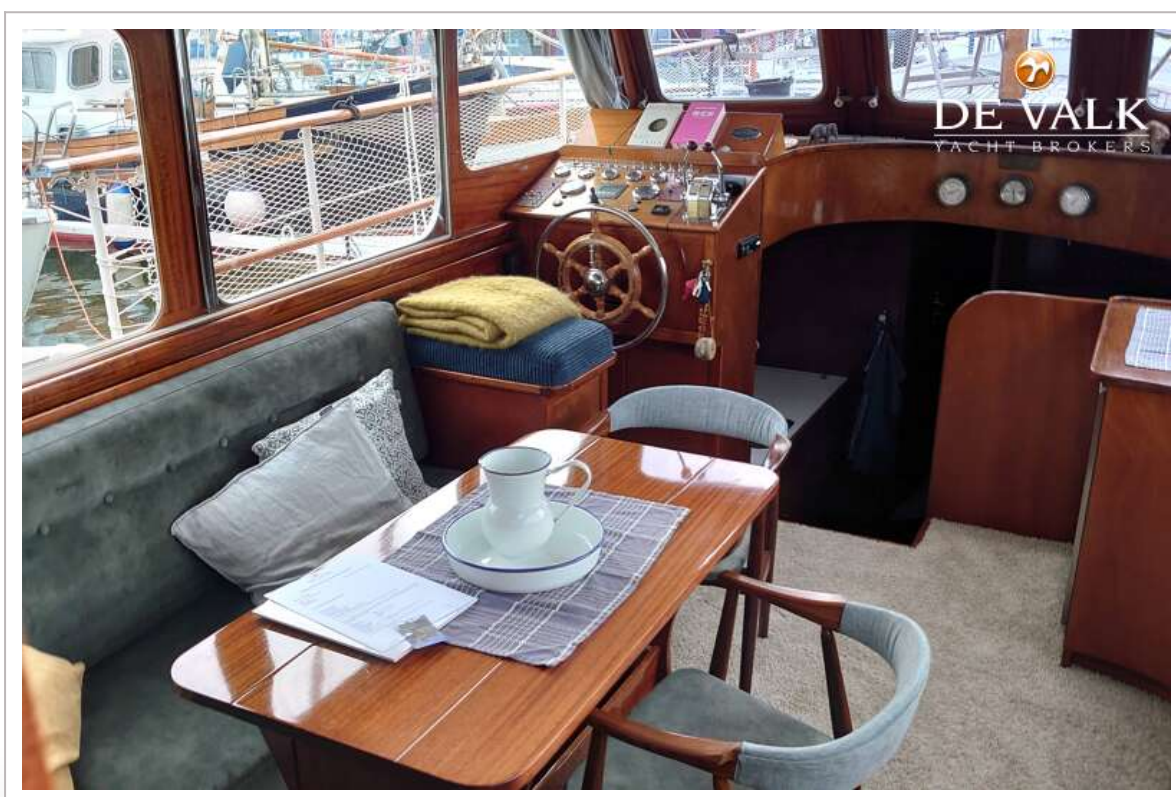
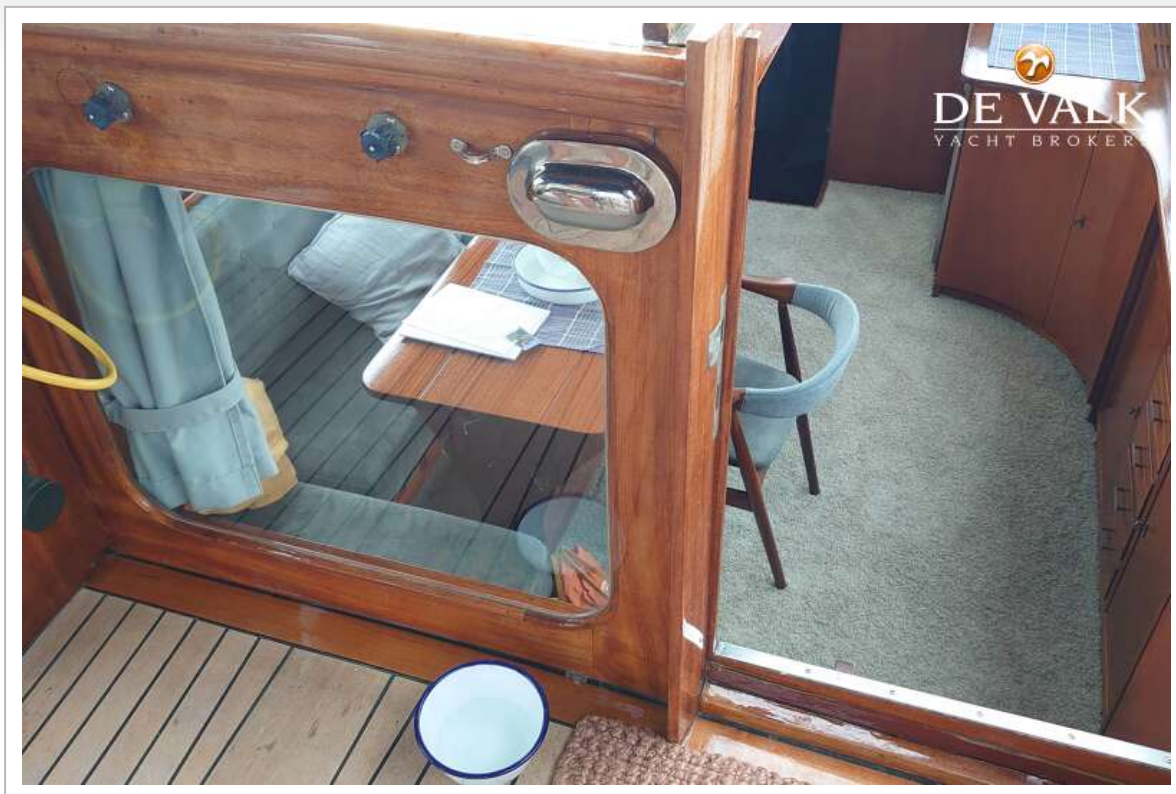


# SUPER VAN CRAFT 1320



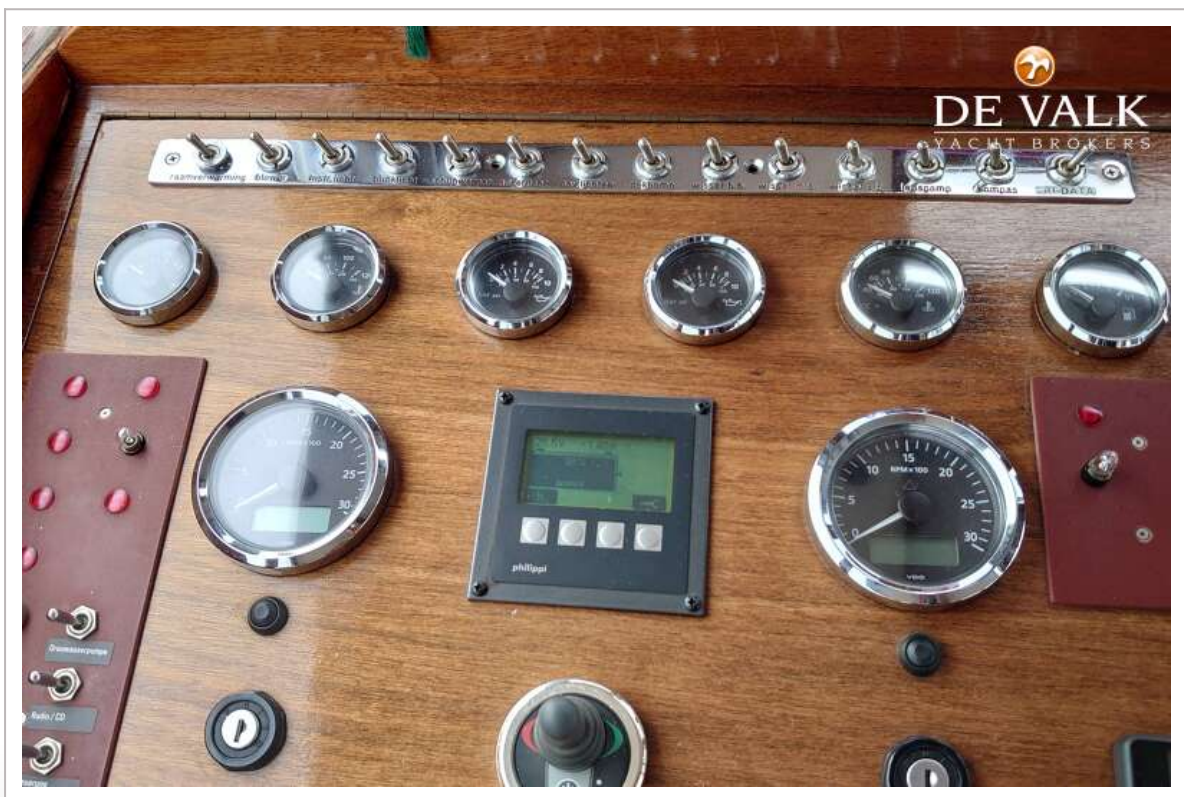
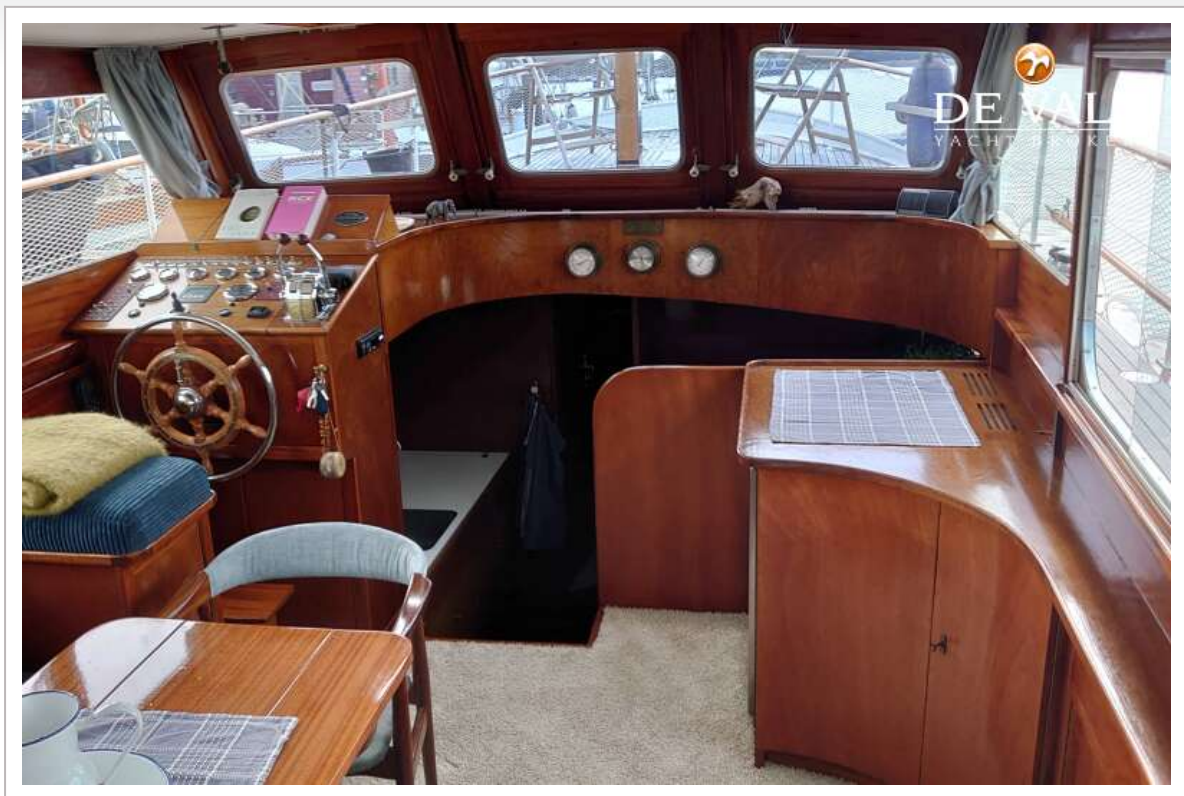


# SUPER VAN CRAFT 1320



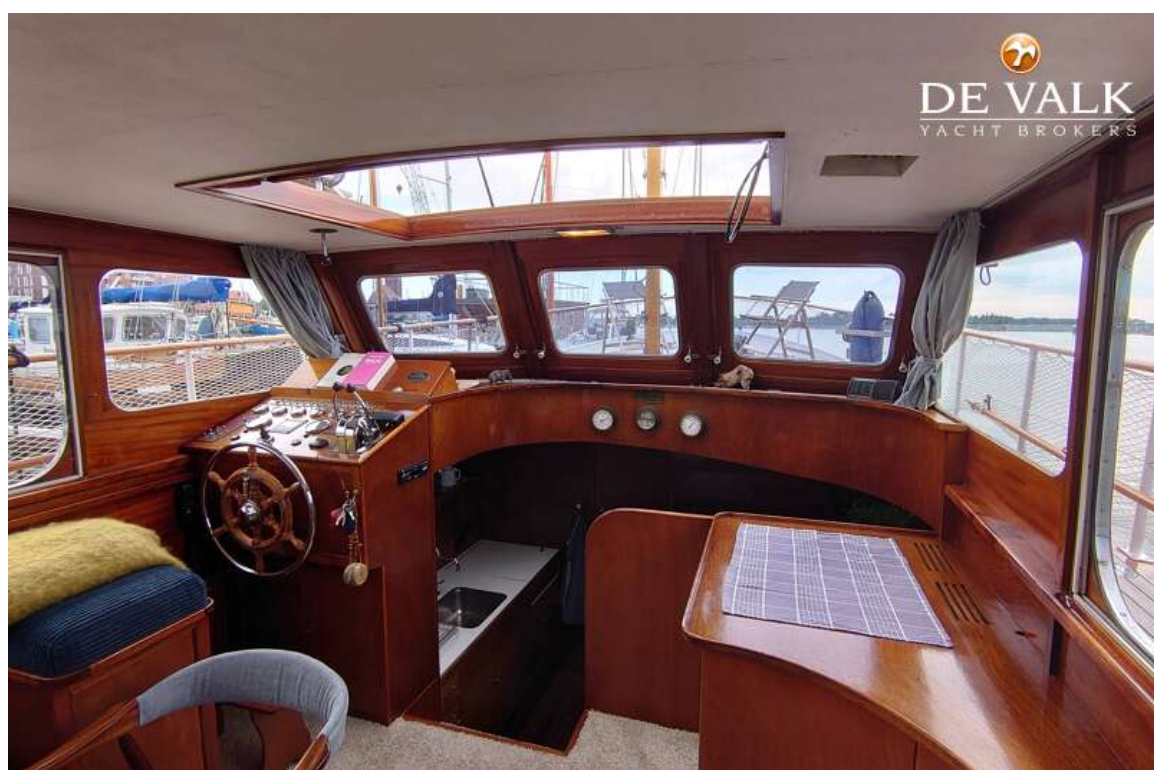


# SUPER VAN CRAFT 1320



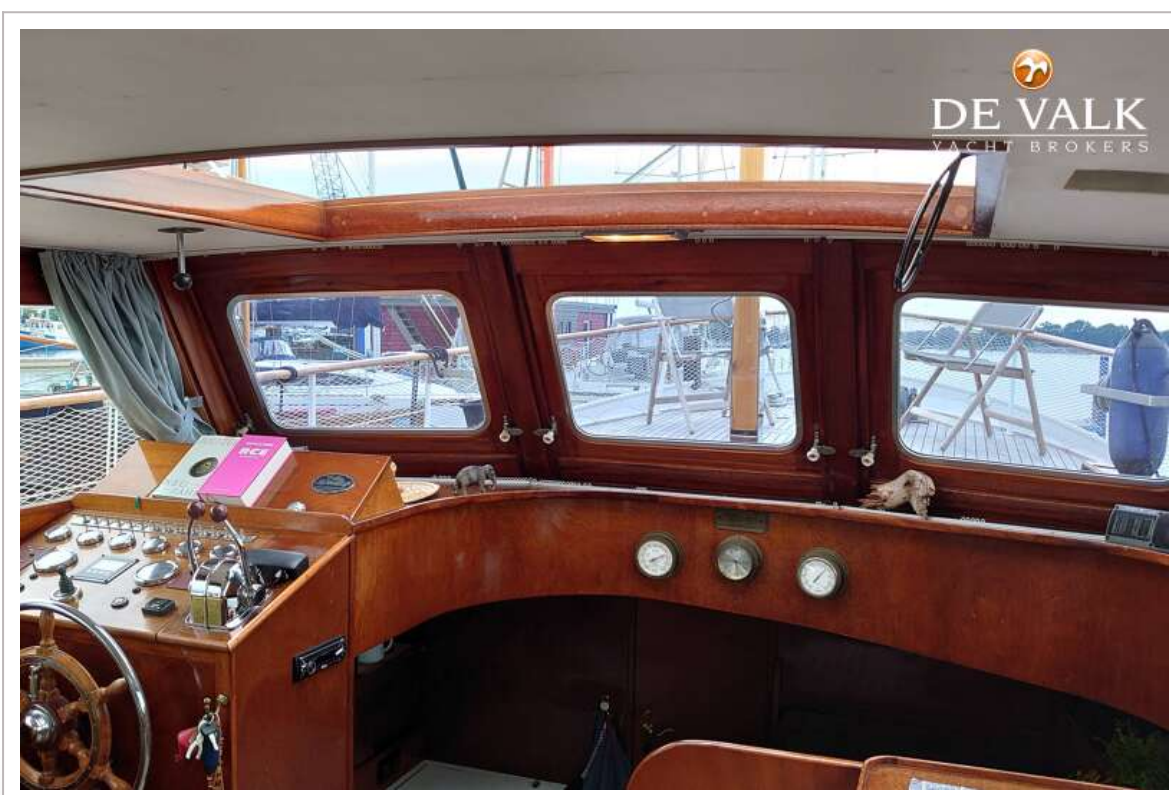


# SUPER VAN CRAFT 1320

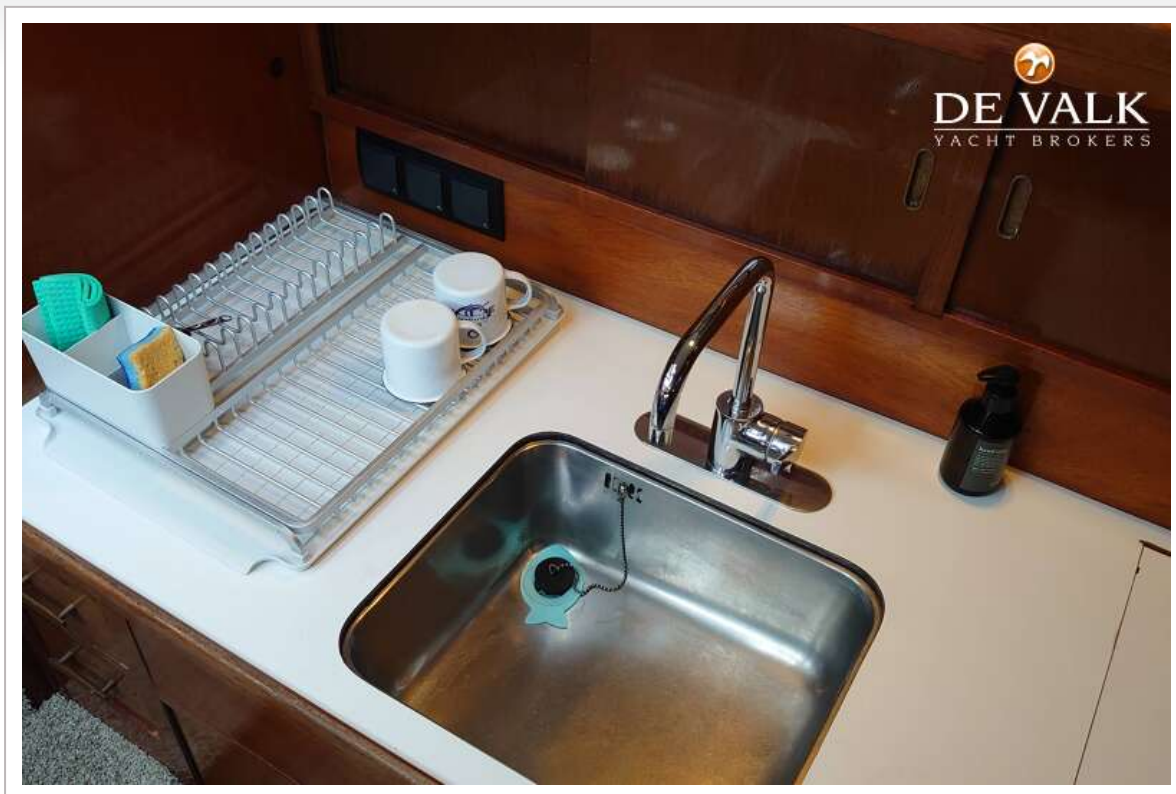




# SUPER VAN CRAFT 1320



# SUPER VAN CRAFT 1320

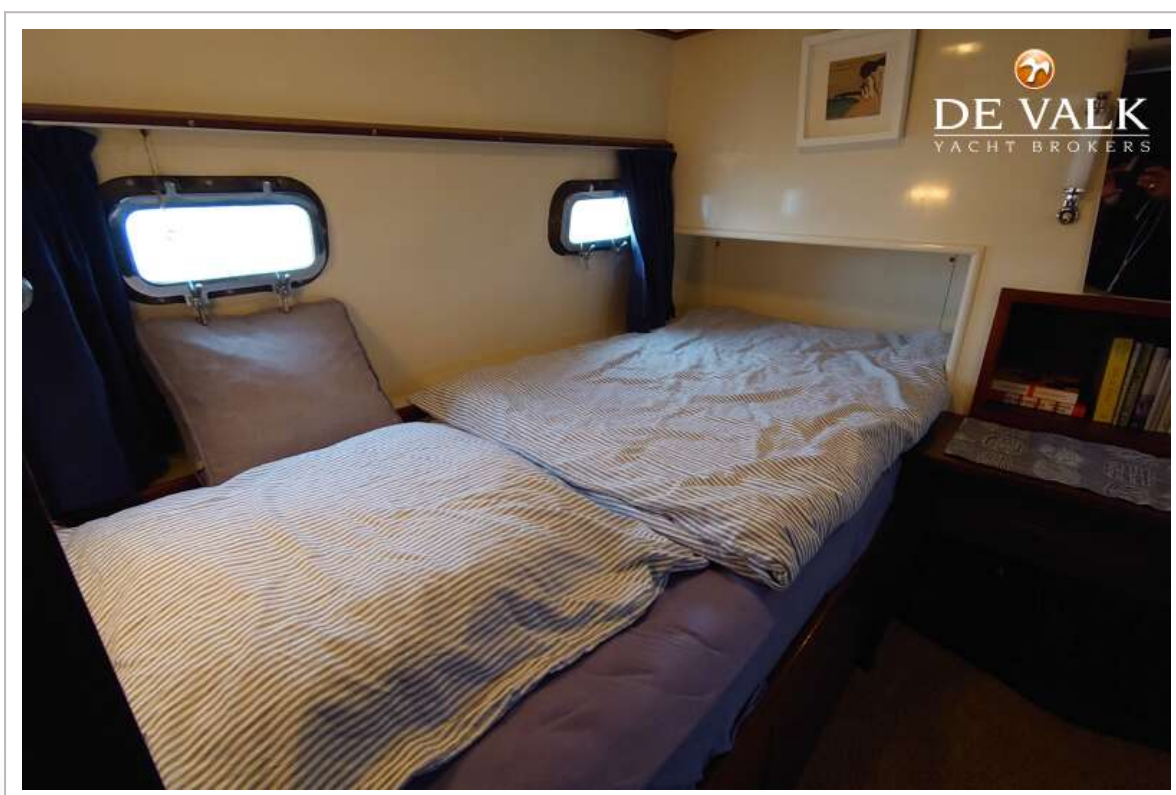
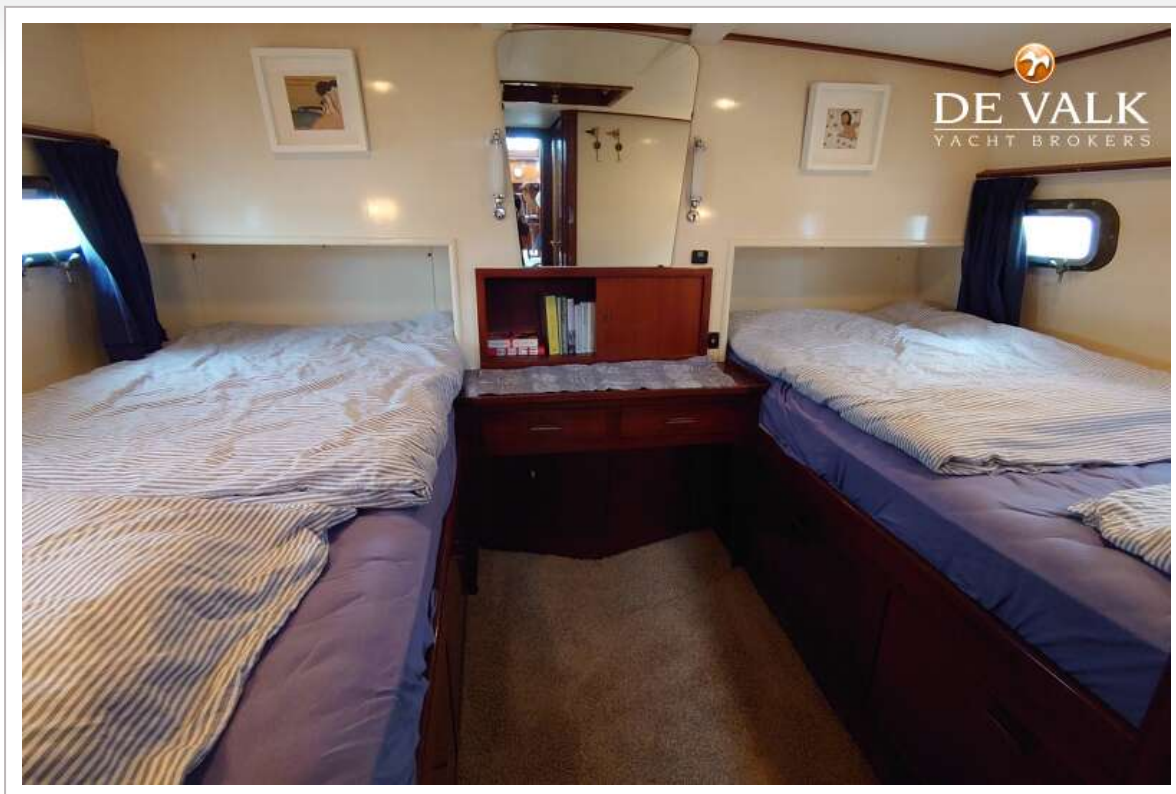




# SUPER VAN CRAFT 1320



# SUPER VAN CRAFT 1320

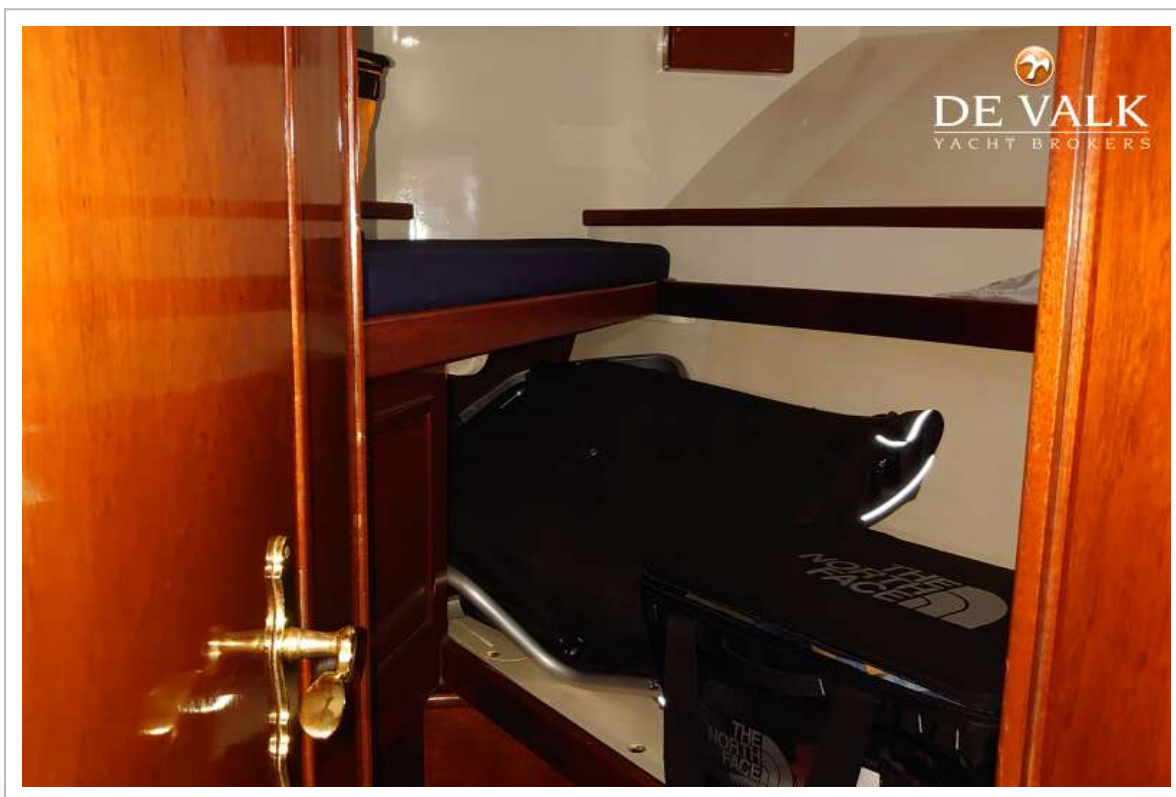




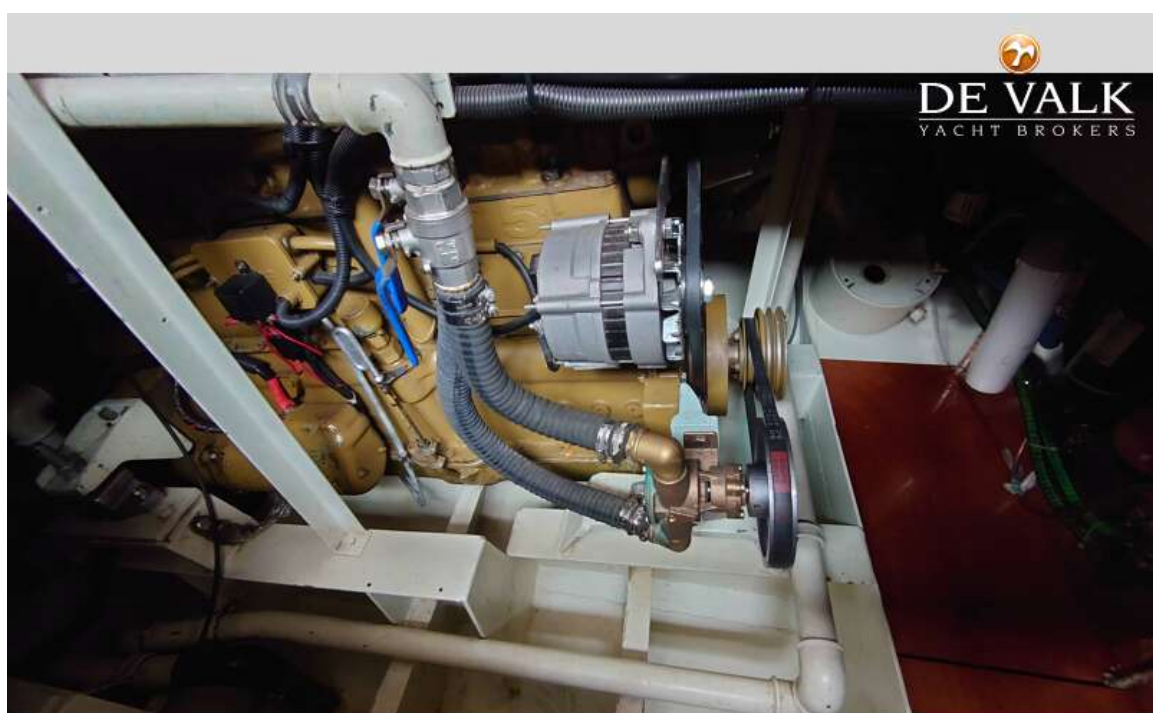
# SUPER VAN CRAFT 1320



# SUPER VAN CRAFT 1320



# SUPER VAN CRAFT 1320





# SUPER VAN CRAFT 1320

