



INTERCRUISER 29



INTERCRUISER 29

BROKER'S COMMENTS

Looking for a cozy boat for a day, weekend or vacation? This Intercruiser 29 is fully equipped. In the past 3 years she has undergone several improvements such as new cushions, new hood, new batteries, refit of the teak deck and so much more. All maintenance bills from 2020 are present and can be viewed. This vessel is generously equipped and ready to enjoy on the water! Make an appointment soon to view her in our covered marina in Loosdrecht. We are open 7 days a week!

Sjoerd Paddenburg

SPECIFICATIONS

Dimensions	9.00 x 3.35 x 0.95 (m)	Builder	Interboat - Zwartsluis
Built	2006	Cabins	1
Material	GRP	Berths	4
Engine(s)	1 x Volvo Penta D3-110 diesel	Hp/Kw	110.00 (hp), 80.96 (kw)
Asking price	sold (VAT)	Lying	at sales office

CONTACT

Sales office	De Valk Loosdrecht B.V.	Telephone	+31 (0)35 582 90 30
Address	't Breukeleveense Meentje 6 1231LM Loosdrecht / Wijdmeren NL	E-mail	loosdrecht@devalk.nl

DISCLAIMER

These particulars are given in good faith as supplied but cannot be guaranteed.



INTERCRUISER 29

GENERAL

Model	INTERCRUISER 29
Type	motor yacht
LOA (m)	9,00
Beam (m)	3,35
Draft (m)	0,95
Air draft (m)	2,35
Air draft min (m)	1,70
Headroom (m)	1,80
Year built	2006
Builder	Interboat - Zwartsluis
Country	The Netherlands
Displacement (t)	5,5
CE norm	B
Hull material	GRP
Hull colour	white
Superstructure material	GRP
Rubbing strake	fender rope New in winter 2021-2022
Deck material	GRP
Deck finish	teak Refitted winter 2021-2022
Superstructure deck finish	paint
Antifouling (year)	Winter 2020-2021
Window frame	stainless steel
Window material	glass
Deckhatch	1x
Fuel tank (litre)	300
Level indicator (fuel tank)	yes
Freshwater tank (litre)	300
Level indicator (freshwater)	yes
Blackwater tank (litre)	polyethylene 75
Blackwater tank extraction	deck extraction + pump



Wheel steering	hydraulic
Outside helm position	hydraulic

ACCOMMODATION

Cabins	1
Berths	4
Interior	teak
Floor	teak and holly
Open cockpit	yes
Heating	diesel ducted hot air Eberspächer
Opening door to cockpit	yes
Countertop	plastic
Sink	stainless steel
Cooker	calor gas 2 burners
Fridge	Dometic (new 2020)
Hot water system	220V + engine Boiler 30 liter
Water pressure system	electrical
Owners cabin	v-bed
Bed length (m)	1,95
Toilet	separate
Toilet system	electric
Wash basin	at the toilet

MACHINERY

No of engines	1
Make	Volvo Penta
Type	D3-110
HP	110
kW	80.96
Fuel	diesel
Cruising speed (kn)	6



INTERCRUISER 29

Engine hours	1061
Engine cooling system	freshwater heat exchanger
Drive	shaft
Engine controls	electrical & bowden cable
Gearbox	hydraulic Volvo Penta
Bowthruster	electric Vetus TSL12A
Propeller type	fixed
Propeller shaft material	stainless steel
Shaft lubrication	water
Electric bilge pump	yes
Electrical installation	12V/230V
Start battery	1x Sportline 105 Ah
Service battery	2x Wilco 230 Ah
Bowthruster battery	1x Wilco 74Ah
Battery charger/inverter	Mastervolt Mass Combi 12/2000-100 (new april 2021)
Shorepower	with cable
Trimtabs	yes
Extra info	Extensive maintainance of engine in 2021
Extra info	Last maintainance engine June 2023

NAVIGATION

Depth sounder/log	Raymarine ST 40
Rudder angle indicator	yes
Navigation lights	yes

EQUIPMENT

Sprayhood	yes
Cockpit cover	yes
Bimini	yes
Window cover	yes
Cockpit cushions	New upholstery interior and exterior October 2021



INTERCRUISER 29

Cockpit table	yes
Bathing platform	yes
Transom door	yes
Deck shower	yes
Anchor	yes
Anchor chain	yes
Windlass	electrical
Sea railing	stainless steel
Horn	yes
Fenders	yes
Mooring lines	yes
Cockpit speakers	yes
Speakers in cabin	2x



INTERCRUISER 29



INTERCRUISER 29



INTERCRUISER 29



INTERCRUISER 29



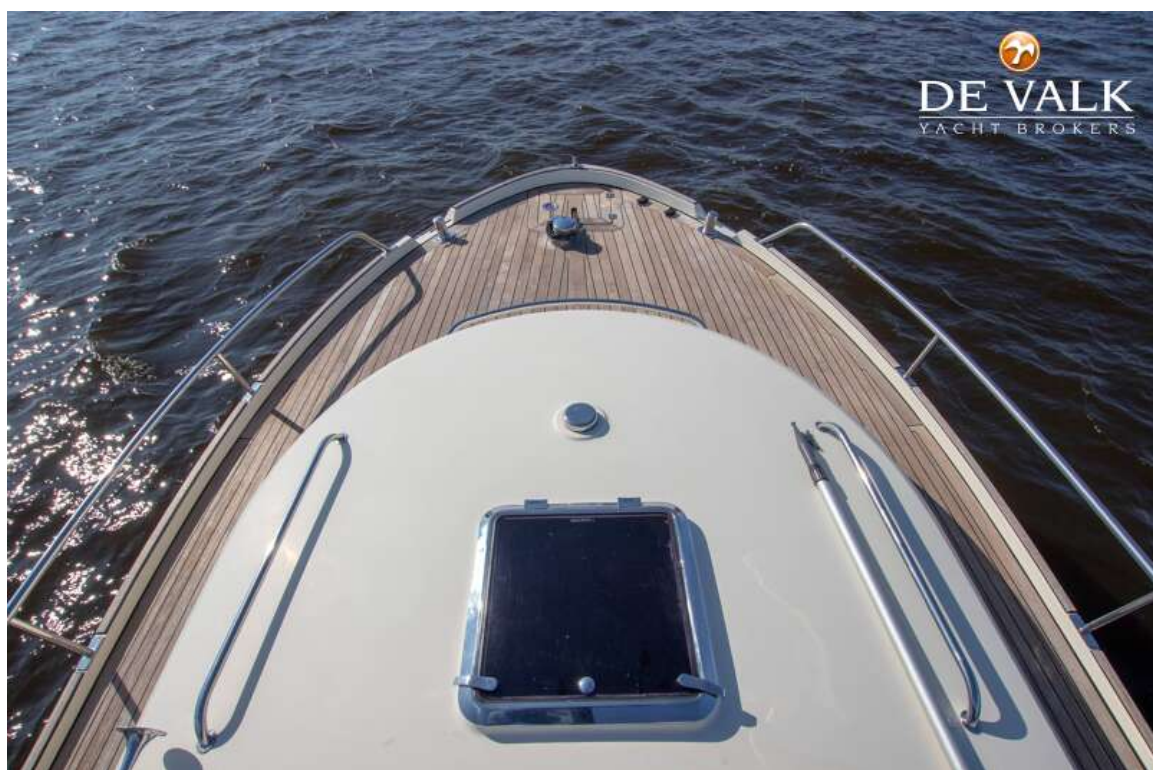
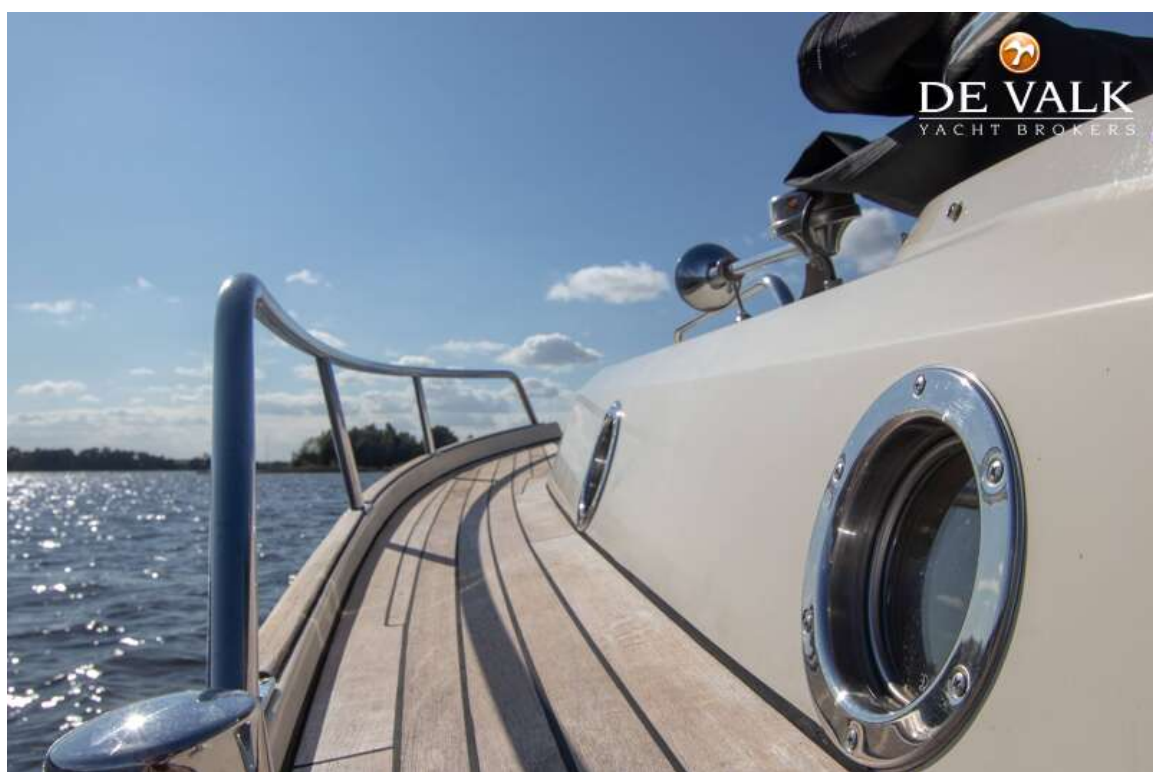
INTERCRUISER 29



INTERCRUISER 29



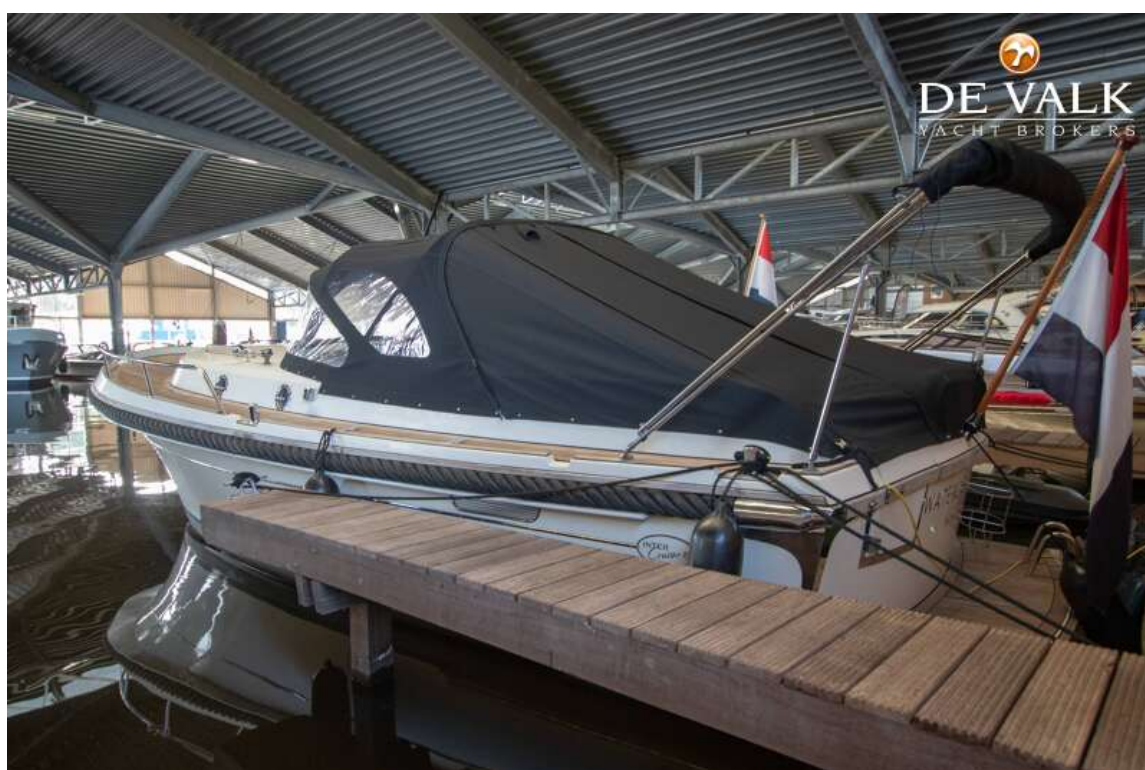
INTERCRUISER 29



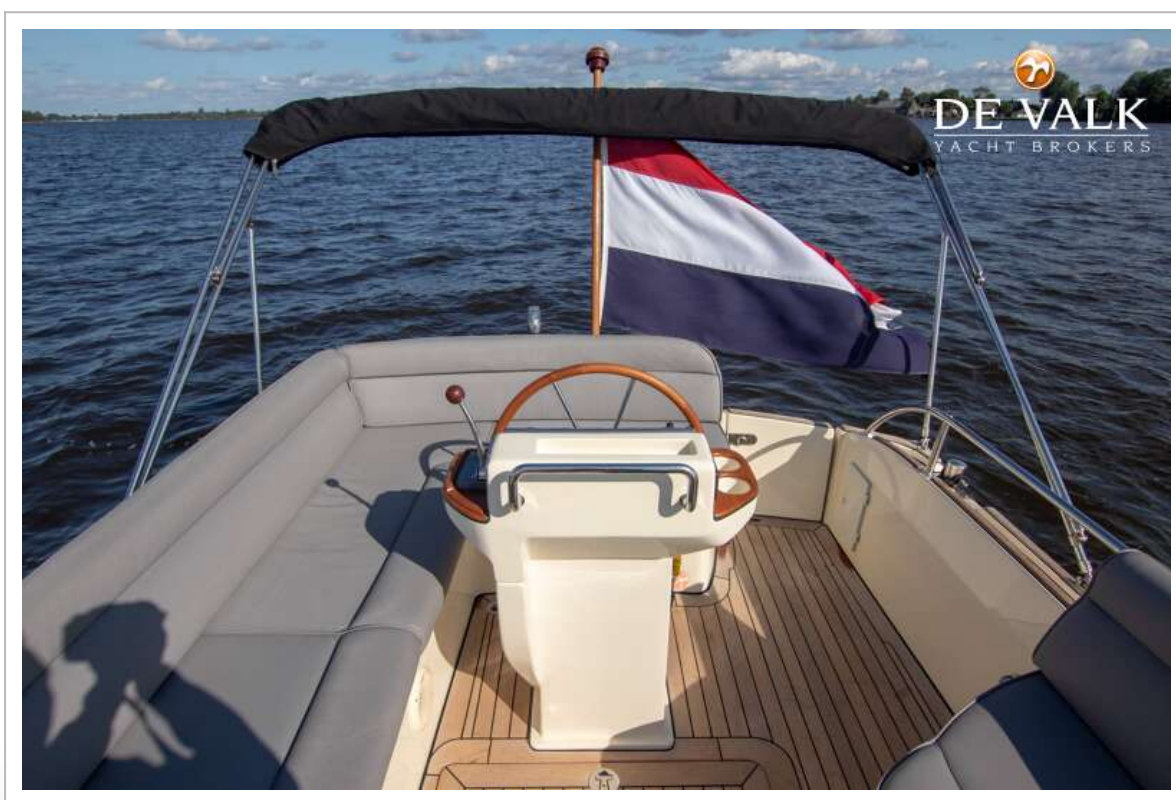
INTERCRUISER 29



INTERCRUISER 29



INTERCRUISER 29



INTERCRUISER 29



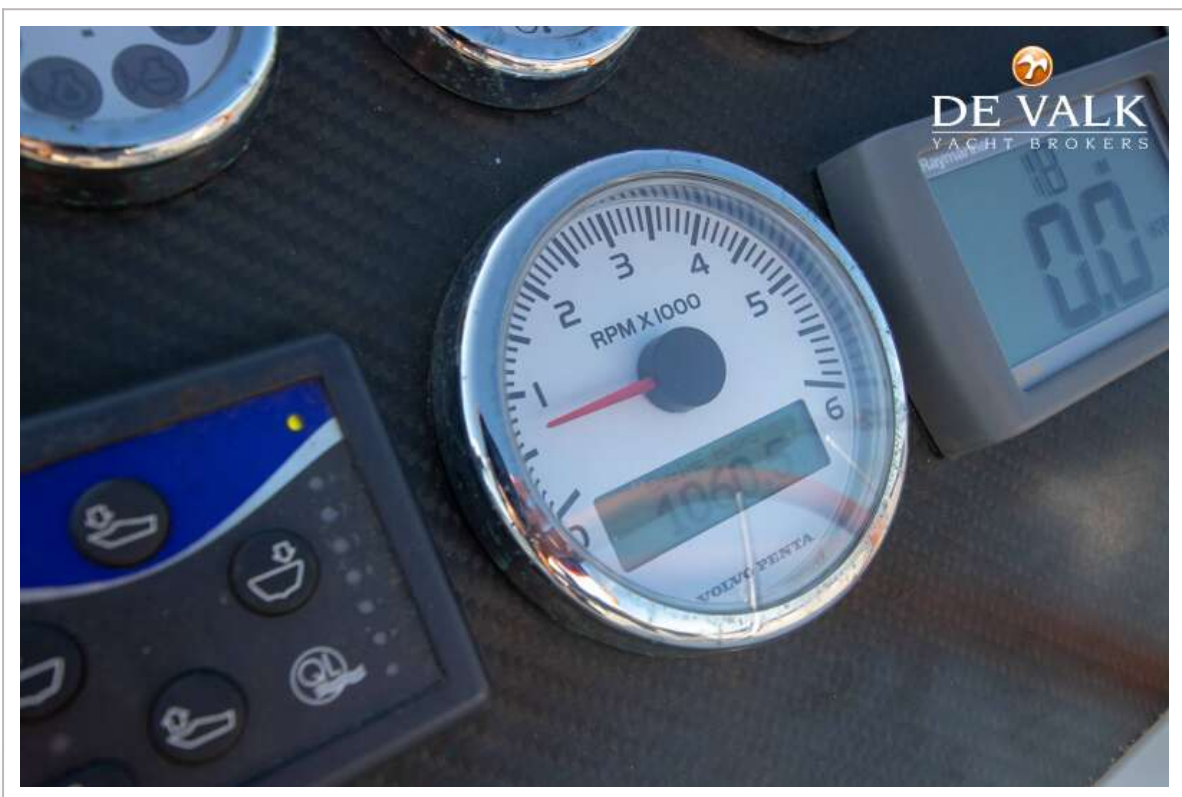
INTERCRUISER 29



INTERCRUISER 29



INTERCRUISER 29



INTERCRUISER 29



INTERCRUISER 29



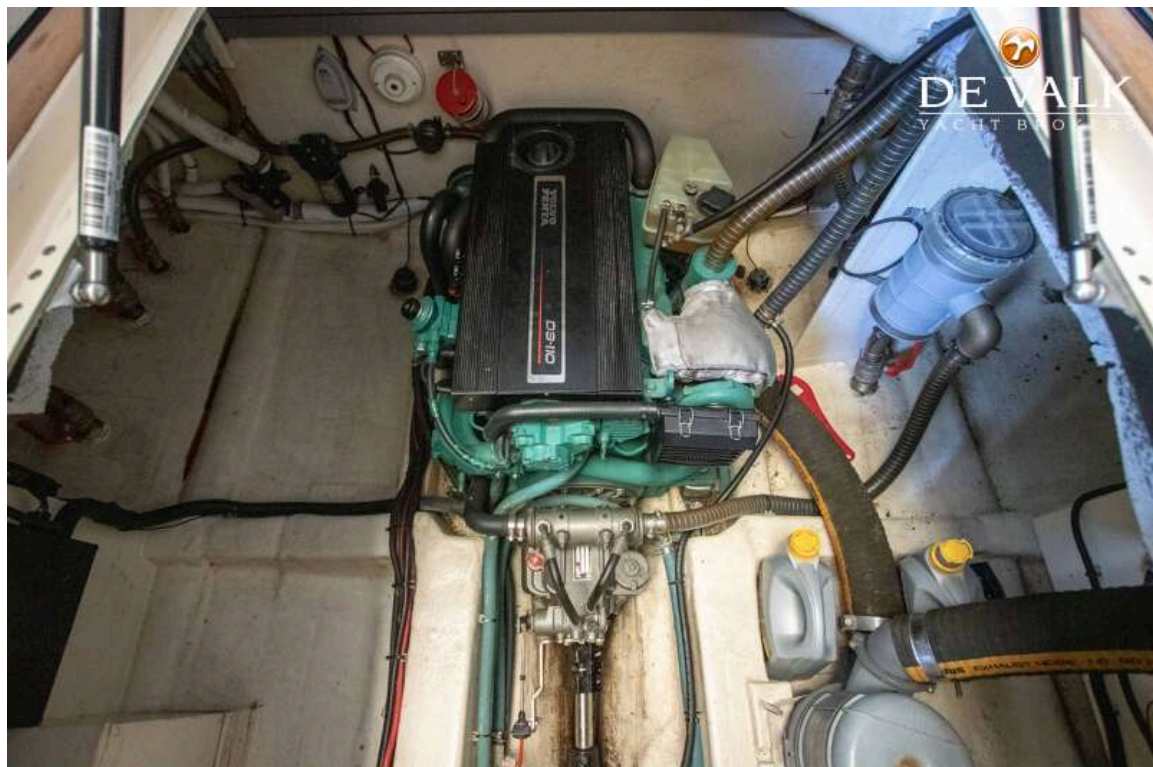
INTERCRUISER 29



INTERCRUISER 29



INTERCRUISER 29



INTERCRUISER 29

