



SWAN 57 KETCH S&S



SWAN 57 KETCH S&S

BROKER'S COMMENTS

Classic Swan Ketch from the legendary Nautor Shipyard in Finland. This Nautor Swan 57,a S&S, "SCARAMOUCHE" was purchased by her current (third) owners) in 2020. They have both invested a lot in upgrading the yacht. A good choice for yachtsmen looking for Swan Yachts.

Sofia Ilia-Salvanou

SPECIFICATIONS

Dimensions	17.50 x 4.83 x 2.80 (m)	Builder	Nautor
Built	1978	Cabins	4
Material	GRP	Berths	7
Engine(s)	1 x PERKINS SABRE M92B/4 Cyllinde diesel	Hp/Kw	75.00 (hp), 55.20 (kw)
Asking price	sold (VAT)	Lying	contact sales office

CONTACT

Sales office	De Valk Corfu	Telephone	(+30) 266 111 8095
Address	New Port of Corfu, near Gouvia Marina 490 83 Corfu GR	E-mail	corfu@devalk.nl

DISCLAIMER

These particulars are given in good faith as supplied but cannot be guaranteed.



SWAN 57 KETCH S&S

GENERAL

Model	SWAN 57 KETCH S&S
Type	sailing yacht
LOA (m)	17,50
LWL (m)	13,96
Beam (m)	4,83
Draft (m)	2,80
Year built	1978
Builder	Nautor
Country	Finland
Designer	Sparkman & Olin Stephens
Displacement (t)	22,4
Ballast (tonnes)	yes
Gross tonnage	33,07
Hull material	GRP
Hull colour	white
Keel type	fin keel Leed
Superstructure material	GRP
Deck material	GRP
Deck finish	teak Reinstalled in 2006, thickness 10mm
Antifouling (year)	2023
Deckhatch	yes
Portholes	yes
Insulation	yes
Fuel tank (litre)	570 (cleaned 2017)
Freshwater tank (litre)	1000
Wheel steering	yes
Outside helm position	yes
Emergency tiller	yes

ACCOMMODATION



SWAN 57 KETCH S&S

Cabins	4
Berths	7
Floor	teak
Saloon	L Setee to Port sidConduroy covers. Teak battens on hull sides.
Navigation center	yes
Chart table	yes
Aft Cabin	yes
Dinette	yes
Dinette to convert into berth	To Double berth
Galley	yes
Countertop	yes
Sink	stainless steel Double
Cooker	calor gas ENO 2 BURNERS 2016 electric & gas. pipes, valves regulator 2016
Oven	yes
Gas alarm	yes
Fridge	X 2 (TOP OPENING & SIDE DOOR) Cold water pump replaced 2020
Hot water system	yes
Crockery	yes
Owners cabin	double bed Plus single bunk bed. Teak battens on hull sides.Deck hatch.
Wardrobe	yes
Bathroom	en suite
Toilet	en suite Teak grate
Toilet system	electric
Wash basin	in the bathroom
Shower	en suite
Guest cabin 1	bunk bed Double
Wardrobe	yes
Bathroom	separate
Toilet	separate Teak grate



SWAN 57 KETCH S&S

Wash basin	in the bathroom
Shower	separate
Guest cabin 2	bunk bed Double
Wardrobe	yes
Bathroom	separate
Toilet	separate Teak grate
Wash basin	in the bathroom
Shower	separate
Guest cabin 3	double bed Forward V cabin. Hull sides lined with teak battens
Wardrobe	Hanging lockers
Bathroom	yes
Toilet	separate Teak grate
Wash basin	in the bathroom
Shower	separate
Extra info	Temperature controls for fridges new 2021

MACHINERY

No of engines	1
Make	PERKINS SABRE
Type	M92B/4 Cyllinde
HP	75
kW	55.20
Fuel	diesel
Year installed	2008
Drive	shaft
Gearbox	PRM Newage gearbox. New 2021
Propeller type	fixed
Manual bilge pump	Year 2018
Electric bilge pump	Automatic Year 2018
Electrical installation	yes
Generator	FISHER PANDA New 2020 (220V-240V)



Batteries	yes
Start battery	Year 2021
Service battery	Year 2020
Generator battery	Year 2021
Battery charger	Mastervolt Year 2020
Shorepower	yes

NAVIGATION

Compass	yes
Depth sounder	yes
Log	yes
Windset	yes
VHF	yes
Autopilot	yes
GPS	yes
EPIRB	Needs service
Navigation lights	yes

EQUIPMENT

Sprayhood	yes
Bimini	Cockpit
Sun awning	Bridge deck/deck up to main mast
Boarding ladder	yes
Gangway	yes
Anchor	CQR Plough Remote control for winch & chain counter Year 2016
Anchor chain	Approx 70 m Year 2014
Windlass	LOFRANS FALCON Year 2020
Dinghy	AVON inflatable
Outboard	YAMAHA 2,5 Hp
Sea railing	stainless steel



SWAN 57 KETCH S&S

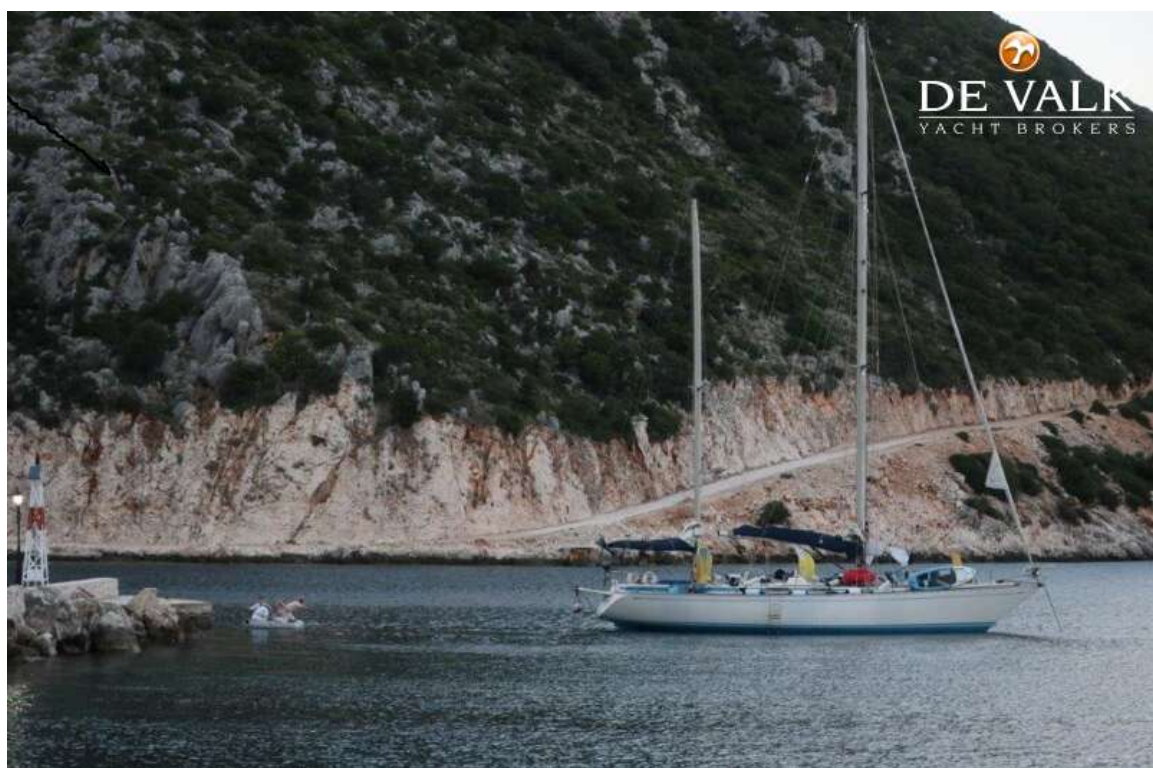
Railing side opening gates	yes
Life raft	Container serviced 2023 SEATEC RESCUEISLAND OFFSHORE2018
Last life raft survey	2023
Lifejackets	yes
Fenders	X 8 New 2023
Mooring lines	yes
TV	yes
Radio	yes
Cockpit speakers	yes
Fire extinguisher	yes
Extra info	All sea cocks & toilet pipes replaced 2015
Extra info	New BOILER 2018
Extra info	SEATEC Tender (aerotender) 2018

RIGGING

Rigging	Reconditioned standing & running rigging, mast & boom in 1995
Standing rigging	Year 1999 annually checked
Material mast	aluminium
Mainsail	Year 2002 (serviceable but needs replacement). Slab reefing.
Mizzen	Year 2002 (good condition)
Genoa	Year 2002 (due replacement)
Spinnaker	Date unknown. Spinnaker poles: X 2
Staysail	Date unknown



SWAN 57 KETCH S&S



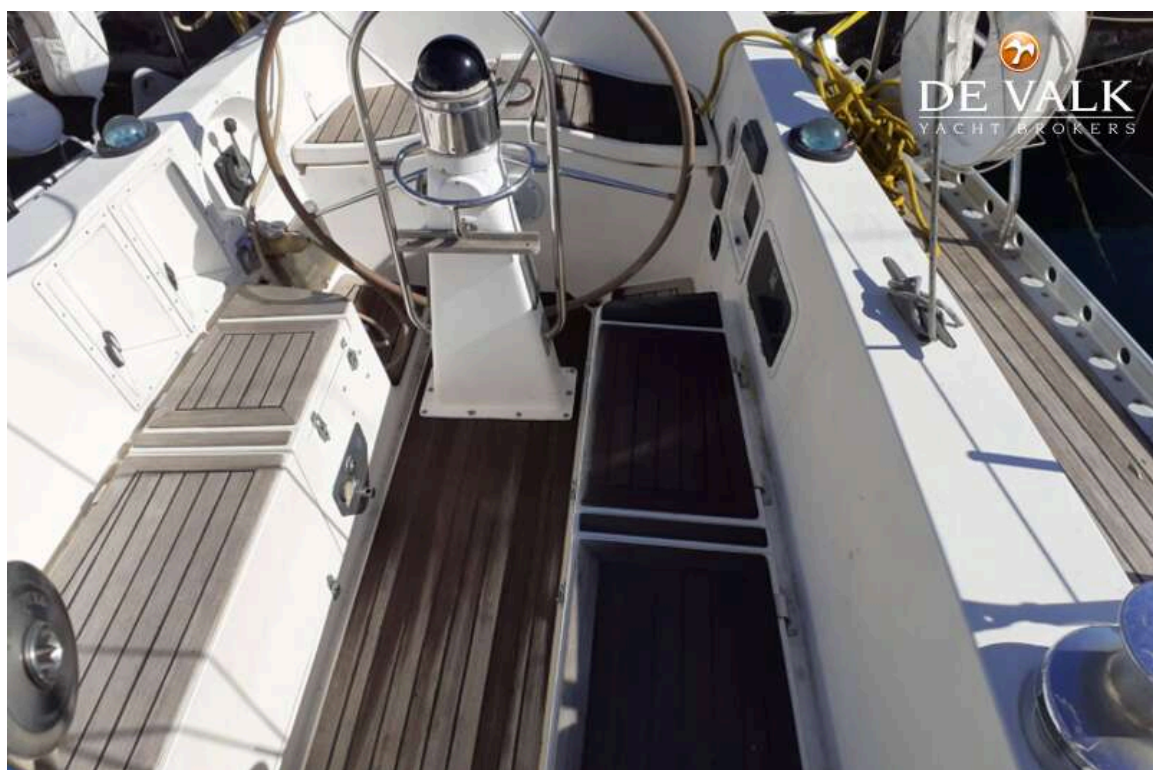
SWAN 57 KETCH S&S



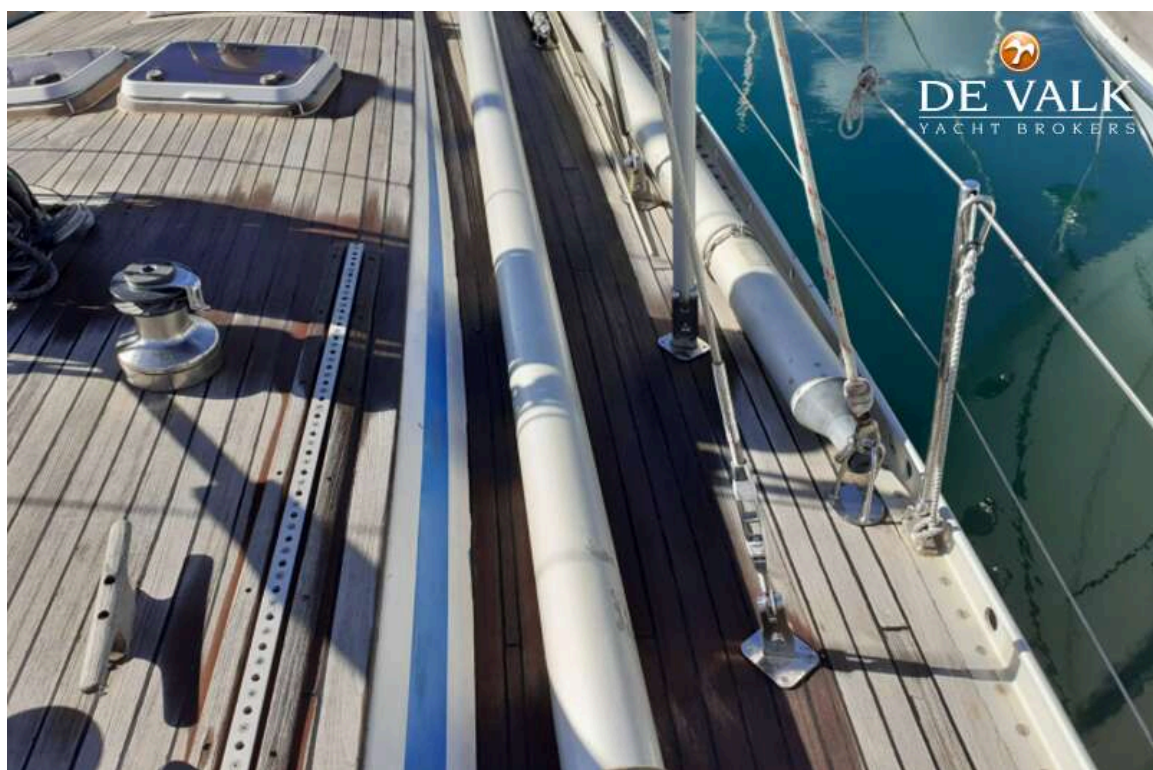
SWAN 57 KETCH S&S



SWAN 57 KETCH S&S



SWAN 57 KETCH S&S



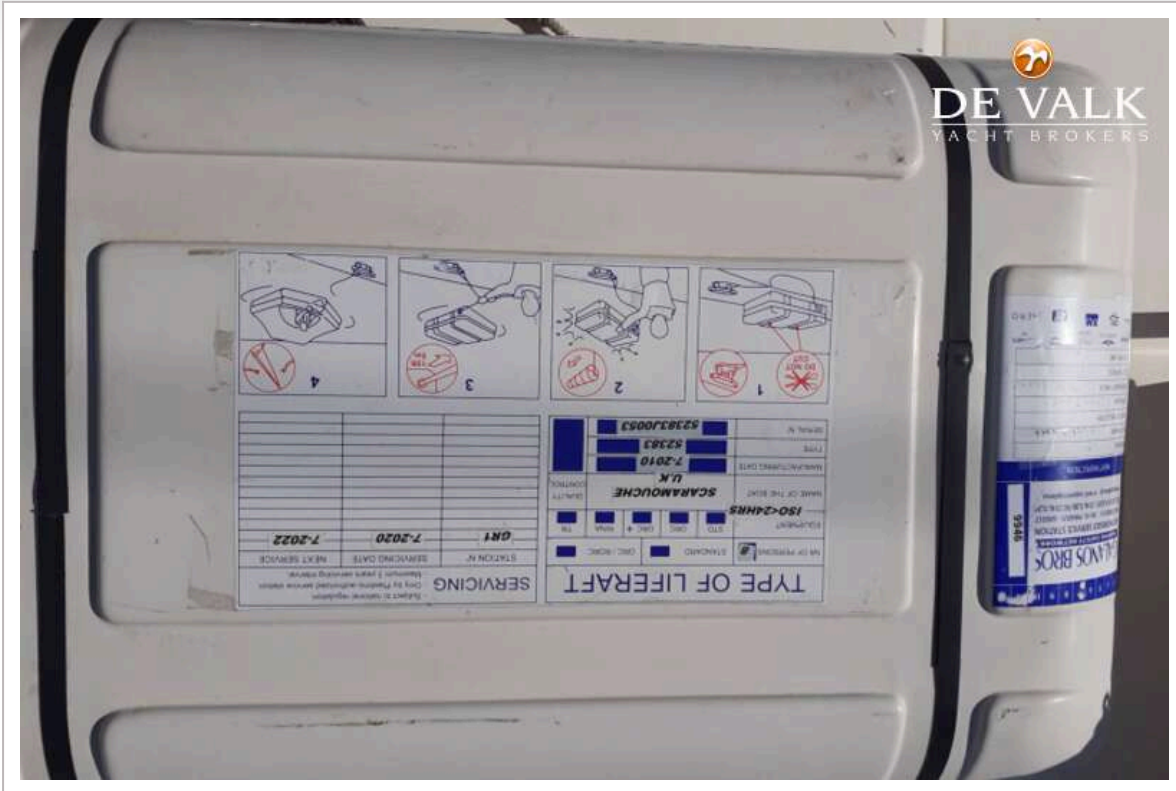
SWAN 57 KETCH S&S



SWAN 57 KETCH S&S



SWAN 57 KETCH S&S



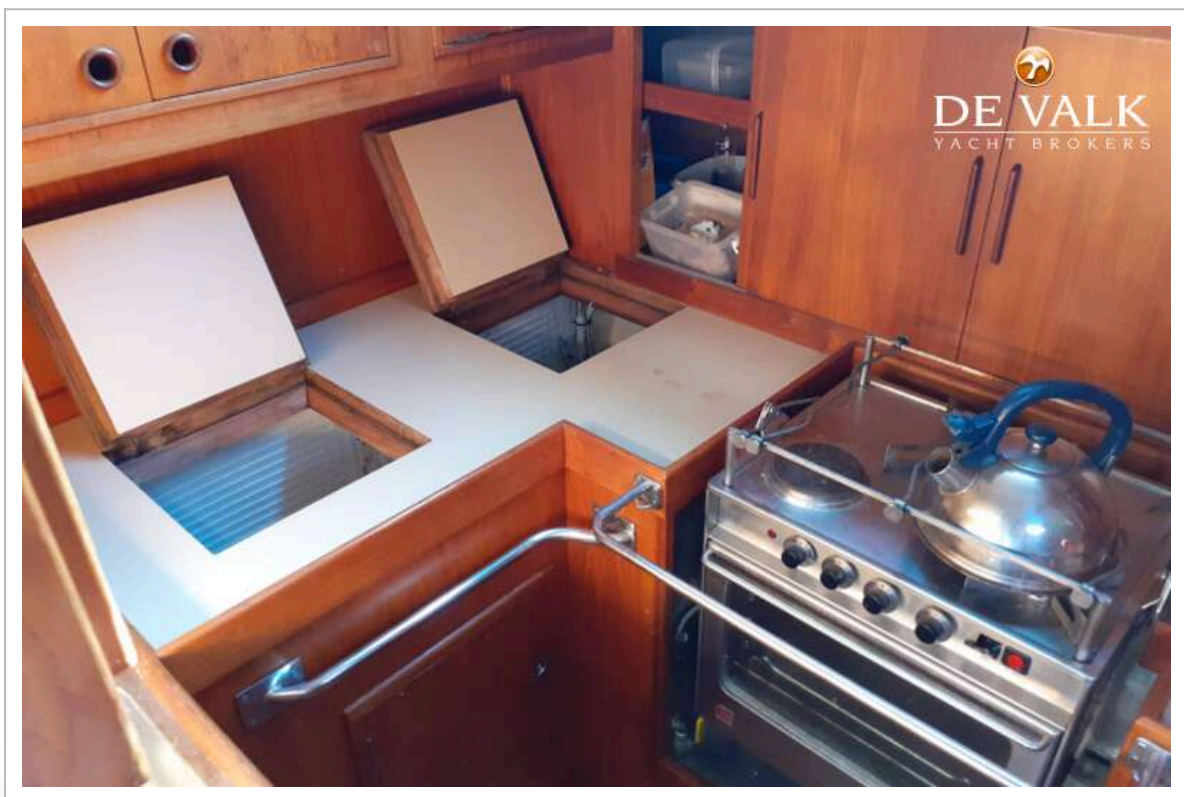
SWAN 57 KETCH S&S



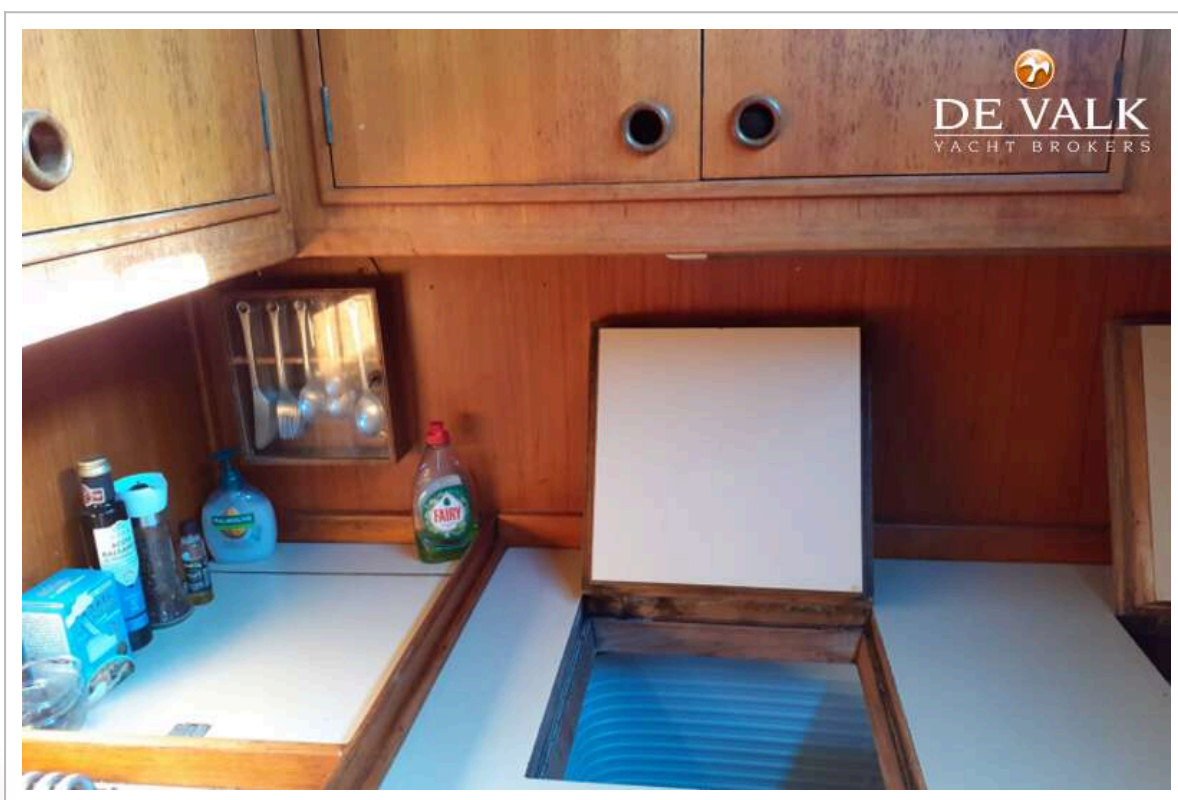
SWAN 57 KETCH S&S



SWAN 57 KETCH S&S



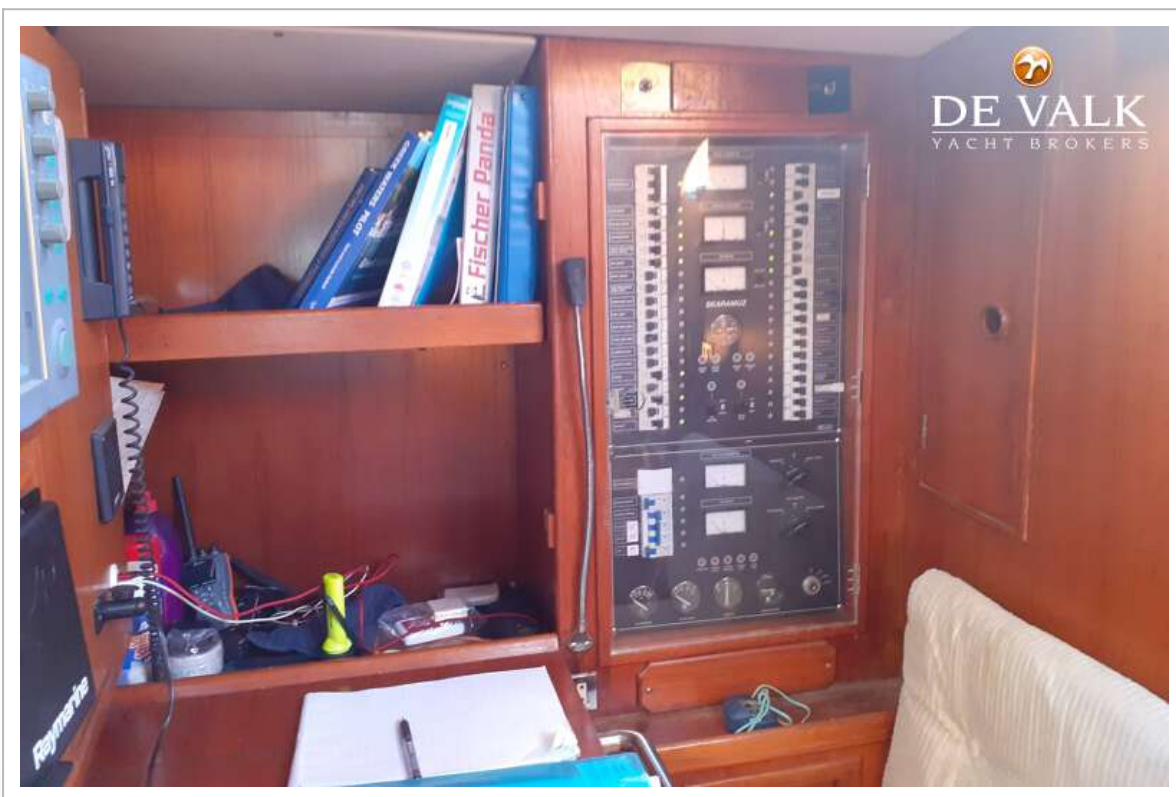
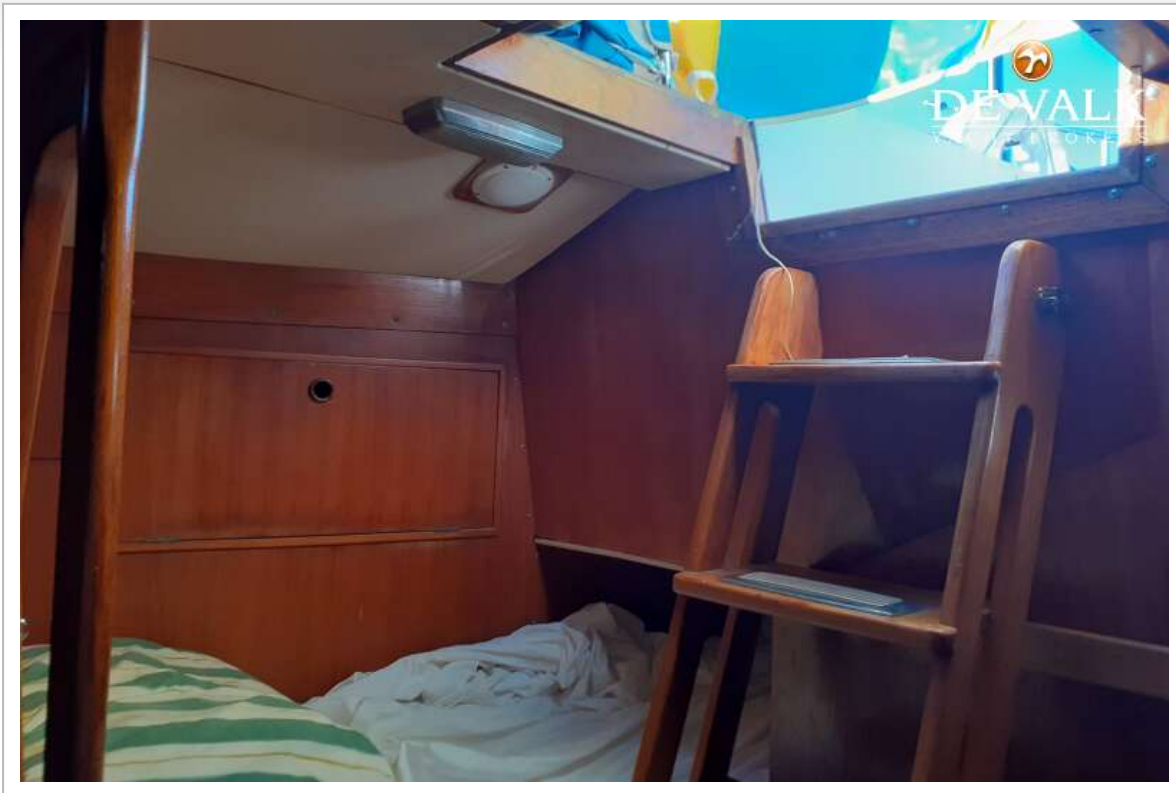
SWAN 57 KETCH S&S



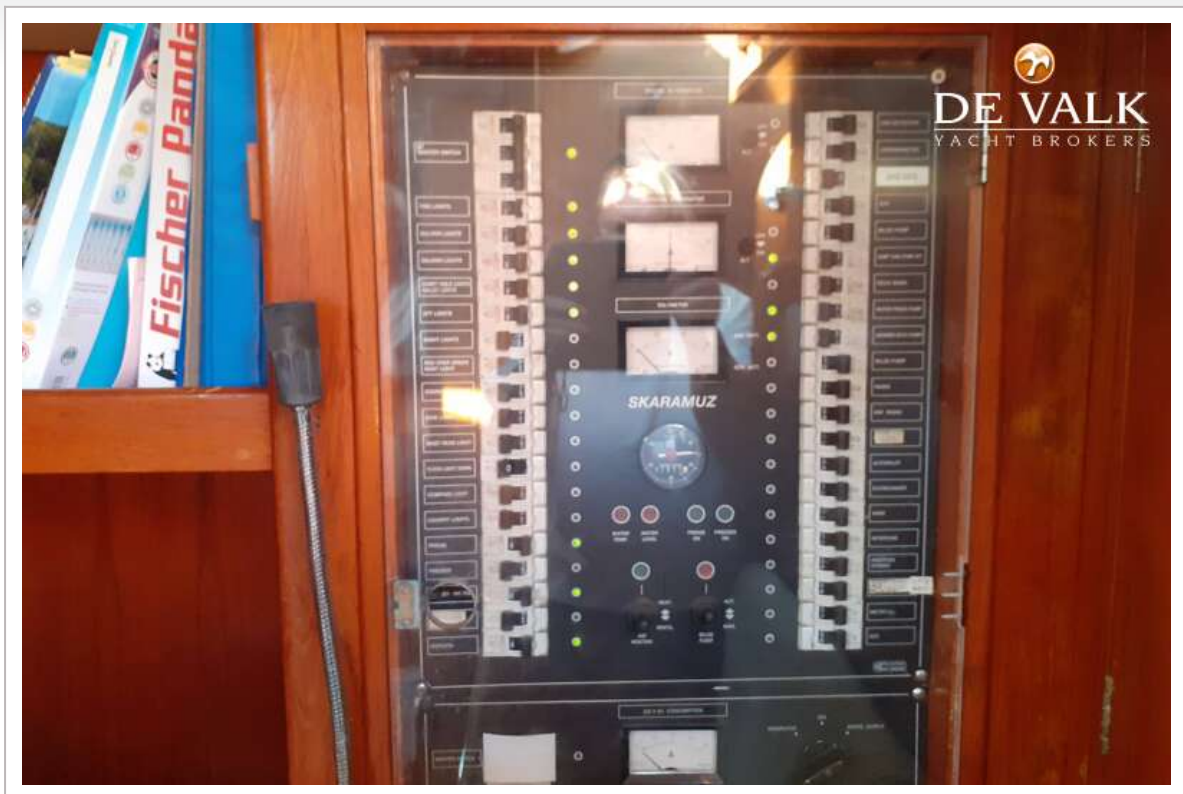
SWAN 57 KETCH S&S



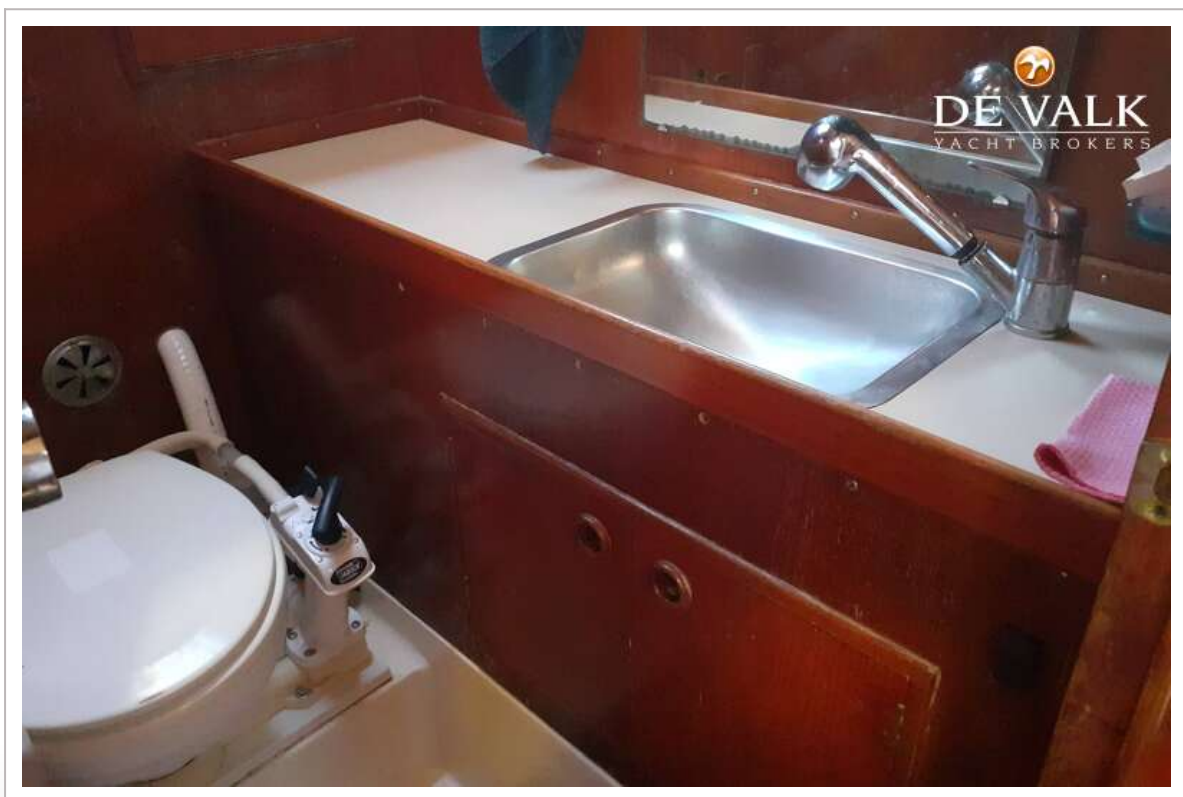
SWAN 57 KETCH S&S



SWAN 57 KETCH S&S



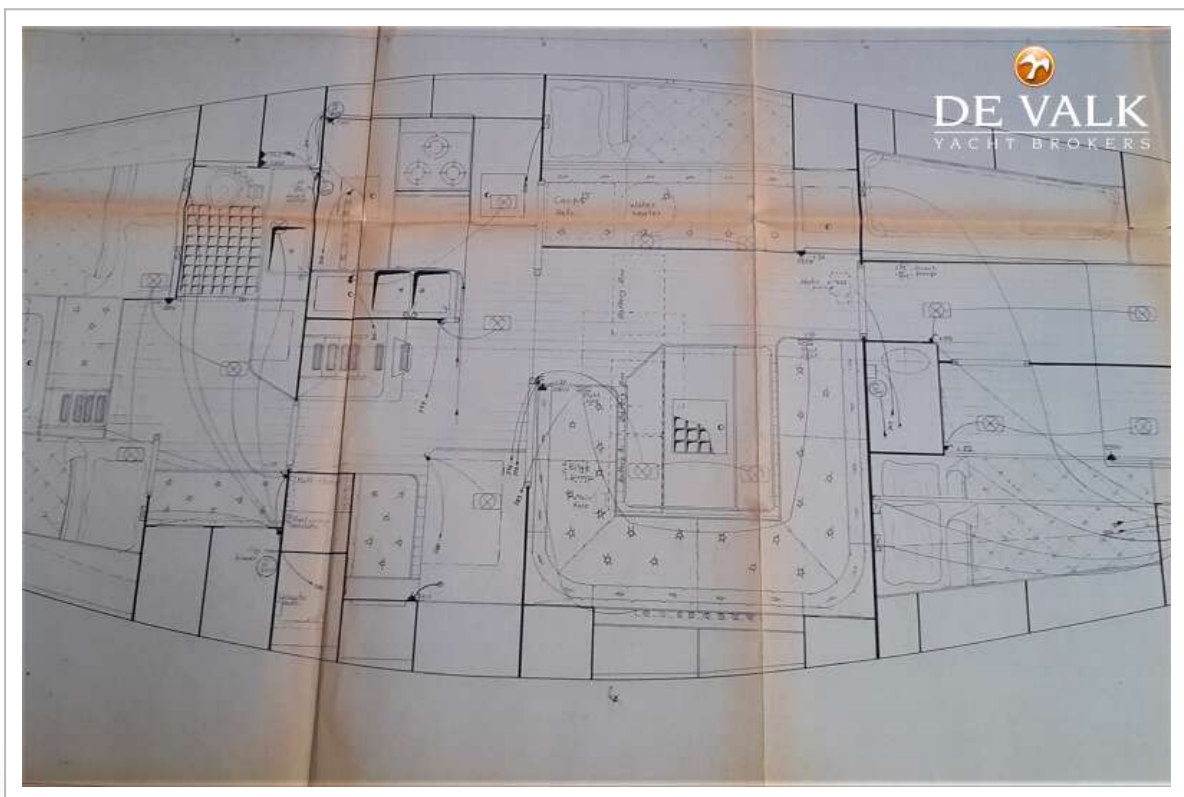
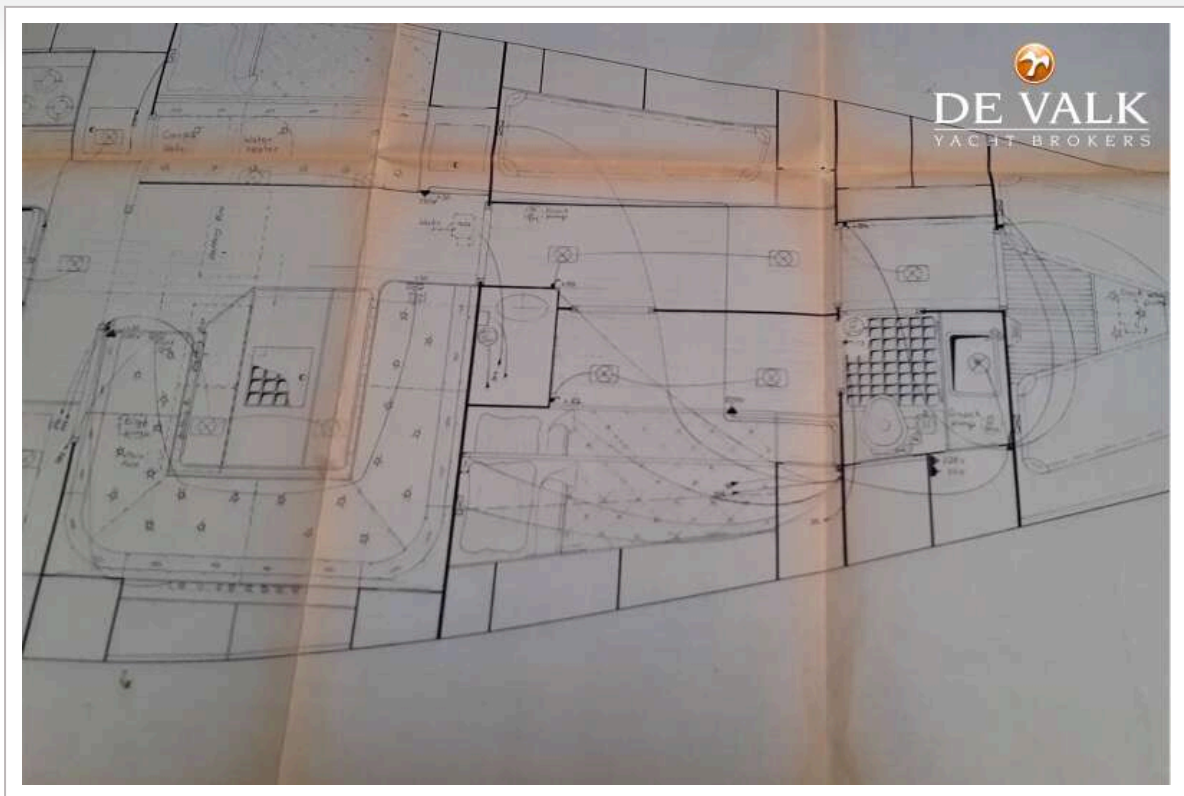
SWAN 57 KETCH S&S



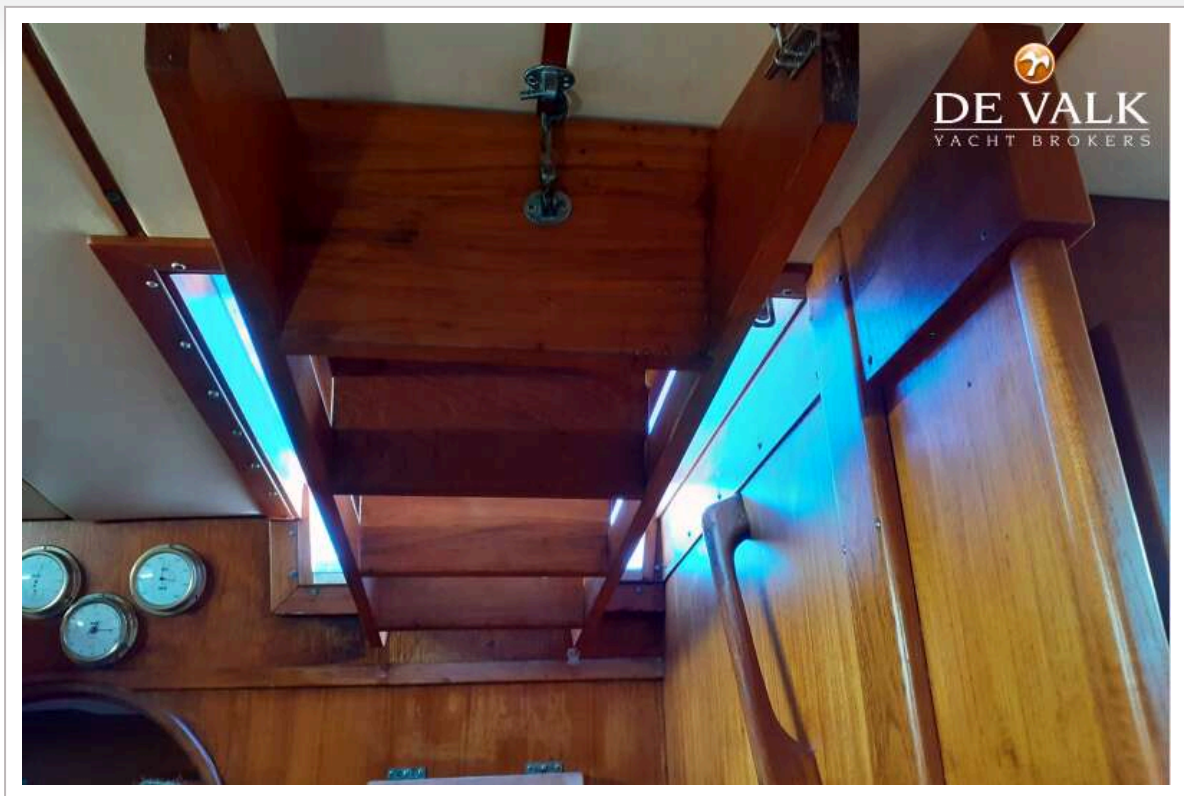
SWAN 57 KETCH S&S



SWAN 57 KETCH S&S



SWAN 57 KETCH S&S



SWAN 57 KETCH S&S

