



X-YACHTS X-46

X-YACHTS X-46

BROKER'S COMMENTS

The X-46 is a fast and well-known comfortable cruiser/ club racer. Typically designed with a competitive crew in mind, targeting club regattas, but also for relaxed comfortable holiday cruising with family and friends. During the years this owners version with long galley, has been very well maintained by her two owners, she just shows very light usage marks, you can tell she had no hard life. She is absolute one of the better ones seen for many years with stunning young sails. The interior with her light-colored leather upholstery is very neat; overall well presented. A joy to sail away.

Willem Koopmans

SPECIFICATIONS

Dimensions	14.01 x 4.14 x 2.40 (m)	Builder	X Yachts
Built	2006	Cabins	3
Material	GRP	Berths	6
Engine(s)	1 x Volvo Penta D2-55 diesel	Hp/Kw	55.00 (hp), 40.48 (kw)
Asking price	sold (VAT)	Lying	contact sales office

CONTACT

Sales office	De Valk Costa Blanca	Telephone	+34 96 50 21 569
Address	Costa Blanca Region 03730 Javea Alicante ES	E-mail	costablanca@devalk.nl

DISCLAIMER

These particulars are given in good faith as supplied but cannot be guaranteed.



GENERAL

Model	X-YACHTS X-46
Type	sailing yacht
LOA (m)	14,01
LWL (m)	12,30
Beam (m)	4,14
Draft (m)	2,40
Headroom (m)	2,00
Year built	2006
Launched	2006
Builder	X Yachts
Country	Denmark
Displacement (t)	10,9
Ballast (tonnes)	lead 4,5
CE norm	A
Hull material	GRP
Hull colour	white
Hull shape	round-bilged
Keel type	fin keel
Bilge keels	yes
Superstructure material	GRP
Deck material	GRP
Deck finish	teak
Superstructure deck finish	teak
Cockpit deck finish	teak
Antifouling (year)	2023
Window frame	aluminium
Window material	polycarbonate
Deckhatch	yes
Fuel tank (litre)	stainless steel 220
Level indicator (fuel tank)	yes



Freshwater tank (litre)	stainless steel 380, 2x tank
Level indicator (freshwater)	yes
Blackwater tank (litre)	80 (approx.)
Wheel steering	With cover
Emergency tiller	yes
More info on hull	Hull in good condition, osmosis protected.
More info on paintwork	Antifouling anodes 2023

ACCOMMODATION

Cabins	3
Berths	6
Interior	teak
Layout	3 cabin, owner in front
Floor	teak and holly
Saloon	Upholstery: off white leather
Headroom saloon (m)	2
Heating	Eberspacher 5 kW with 5 outlets
Chart table	yes
Aft Cabin	Double
Dinette	yes
Opening door to cockpit	yes
Galley	yes
Countertop	Duropol White
Sink	stainless steel Double
Cooker	calor gas 2 burner Eno
Oven	yes
Fridge	yes
Hot water system	220V + engine 30 ltr Isotherm boiler, with new thermostat and element (2023)
Water pressure system	Fresh and salt water
Manual and/or foot pump	Salt water



X-YACHTS X-46

Owners cabin	double bed
Bed length (m)	2
Wardrobe	hanging and shelves
Bathroom	en suite
Toilet	en suite Jabsco
Toilet system	electric
Wash basin	in the bathroom
Shower	en suite
Guest cabin 1	double bed Aft port side
Bed length (m)	2
Wardrobe	hanging and shelves
Bathroom	shared
Toilet	shared Jabsco
Toilet system	manual
Wash basin	in the bathroom
Shower	shared
Guest cabin 2	Aft star board
Bed length (m)	2
Wardrobe	hanging and shelves
Bathroom	shared
Toilet	shared
Toilet system	manual
Wash basin	in the bathroom
Shower	shared
Extra info	All interior lights are LED lights

MACHINERY

No of engines	1
Make	Volvo Penta
Type	D2-55
HP	55



X-YACHTS X-46

kW	40.48
Fuel	diesel
Year installed	2006
Maximum speed (kn)	9
Cruising speed (kn)	7
Consumption (l/hr)	3
Engine hours	2377
Engine cooling system	freshwater heat exchanger
Drive	sail-drive
Engine controls	bowden cable
Propeller type	folding
Propeller blades	2
Manual bilge pump	yes
Electric bilge pump	yes
Electrical installation	12/228
Batteries	3x, all new August 2022
Start battery	New 2022
Service battery	New 2022
Battery monitor	yes
Battery charger	WP-BC Supreme 60 Amp
Shorepower	with cable

NAVIGATION

Compass	Suunto
Electric compass	On autopilot
Multi control display	Raymarine ST 290, one needs service
Depth sounder	yes
Log	yes
Windset	yes
VHF	Raymarine , connection and speaker outside and inside
VHF handheld	yes



Autopilot	Raymarine ST 6002
Radar	B&G Broadband 4G
GPS	yes
Plotter	Raymarine E 80 inside, as back up
Radar/plotter	B&G Vulcan
AIS transponder	B&G
Navigation lights	yes

EQUIPMENT

Sprayhood	yes
Bimini	New 2021
Bathing platform	With teak
Boarding ladder	stainless steel
Gangway	Stainless steal with teak
Deck shower	Warm/cold
Anchor	Bruce Stainless steel
Anchor chain	45 mtr
Windlass	Lofrans 1500 , also to be operated from cockpit
Dinghy	Zodiac, 3m
Outboard	yes
Sea railing	yes
Life raft	valise (or bag)
Life raft (pers)	8
Last life raft survey	Out of service date (Febr. 2023), but can stay on board
Fenders	yes
Mooring lines	yes
Radio-cd player	yes
Cockpit speakers	Bose
Speakers in salon	In galley
Clock - barometer	yes
Fire extinguisher	yes



Latest extinguisher survey

Needs service/check

RIGGING

Rigging	fractional 7/8
Standing rigging	Rod
Brand mast	Seldén
Material mast	aluminium
Spreaders	3
Keel stepped mast	yes
Mainsail	Evolution, laminated, new 2021
Mainsail cover	yes
Battcars	yes
Fully battened mainsail	yes
Genoa	Evolution, laminated 2021
Genoa I	Light weather, need small reopair
Genoa furler	yes
Code Zero	Almost new
Gennaker	North Sails with cover
Spinnaker	Noth Sails almost new
Reefing System	yes
Backstay adjuster	yes
Boomvang	yes
Primary sheet winch	Lewmar 62 ST
Secondary sheet winch	yes
Halyard winches	Lewmar 46 ST, one electric
Spinnaker winch	Lewmar 46 ST
Winchcovers	yes
Spi-pole	Carbon
Extra info	Sails are almost in as new condition



X-YACHTS X-46



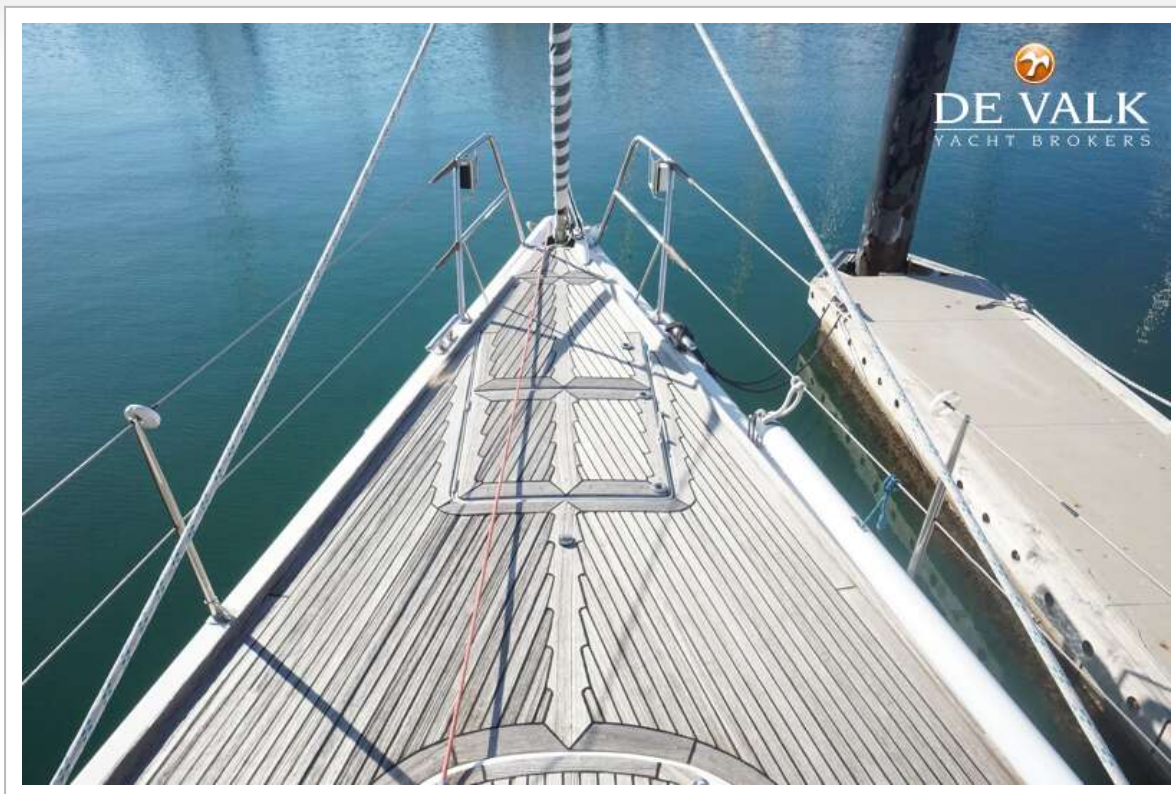
X-YACHTS X-46



X-YACHTS X-46



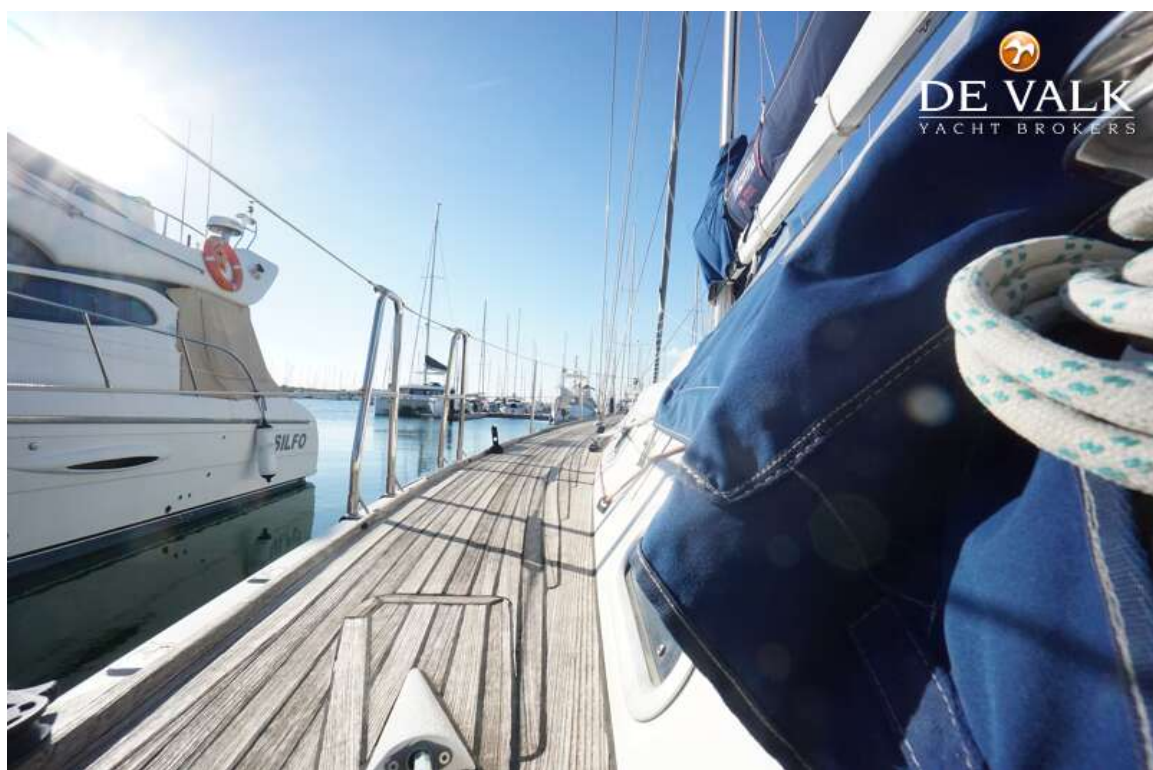
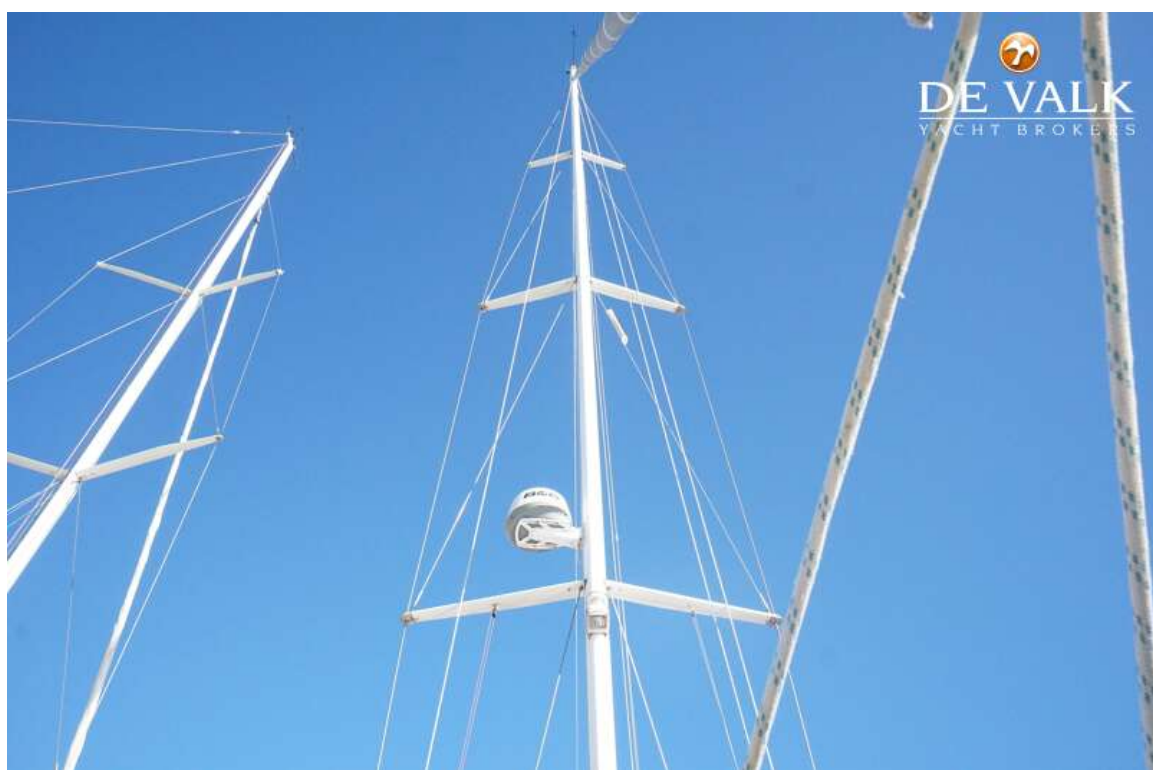
X-YACHTS X-46



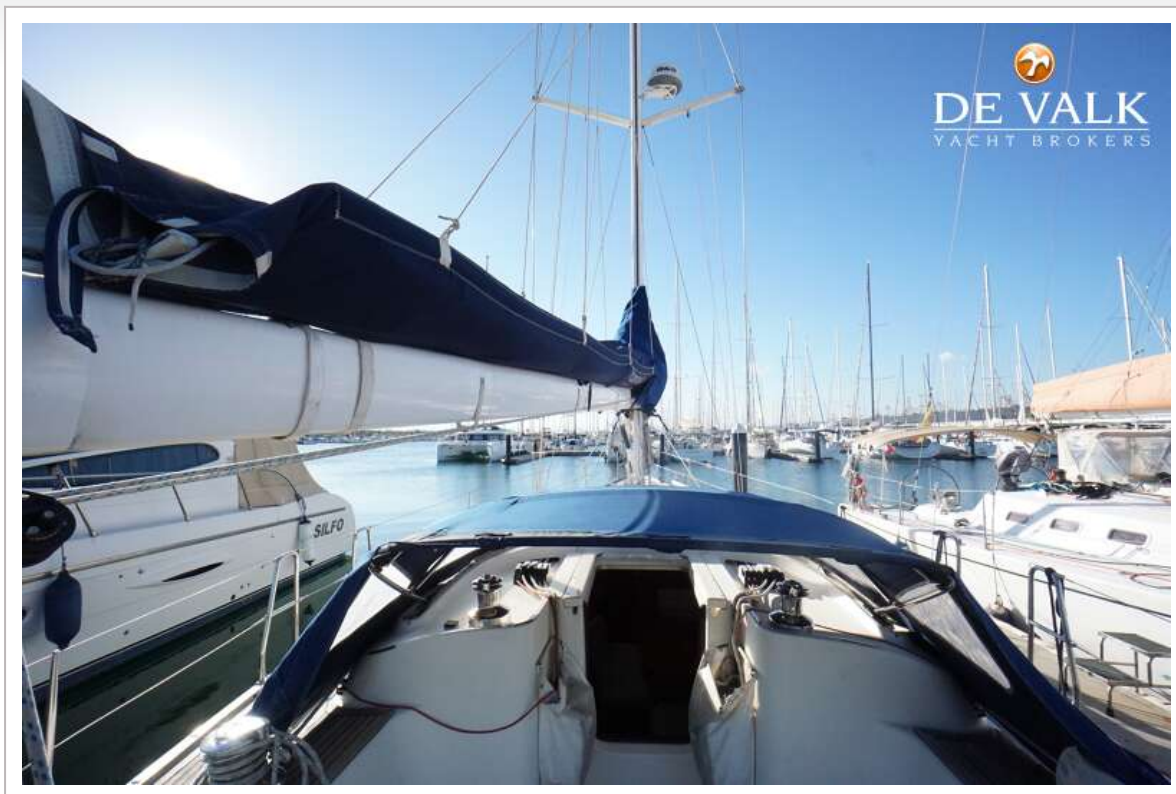
X-YACHTS X-46



X-YACHTS X-46



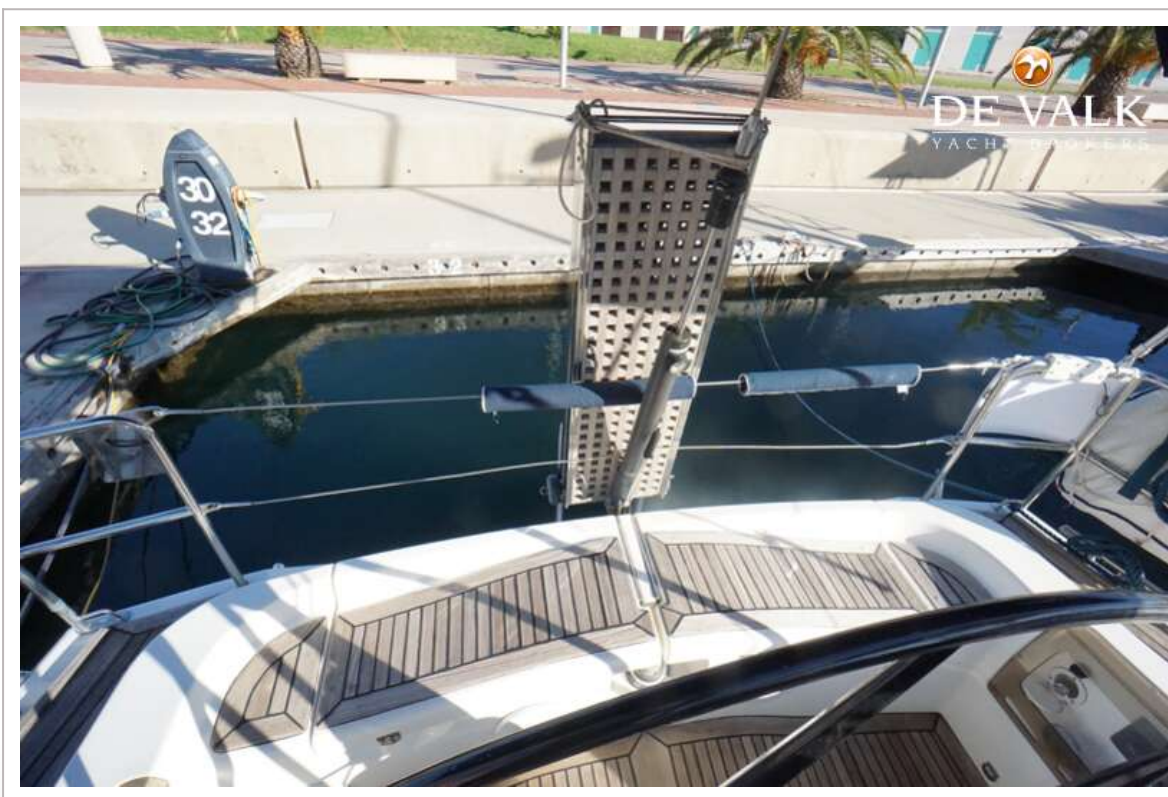
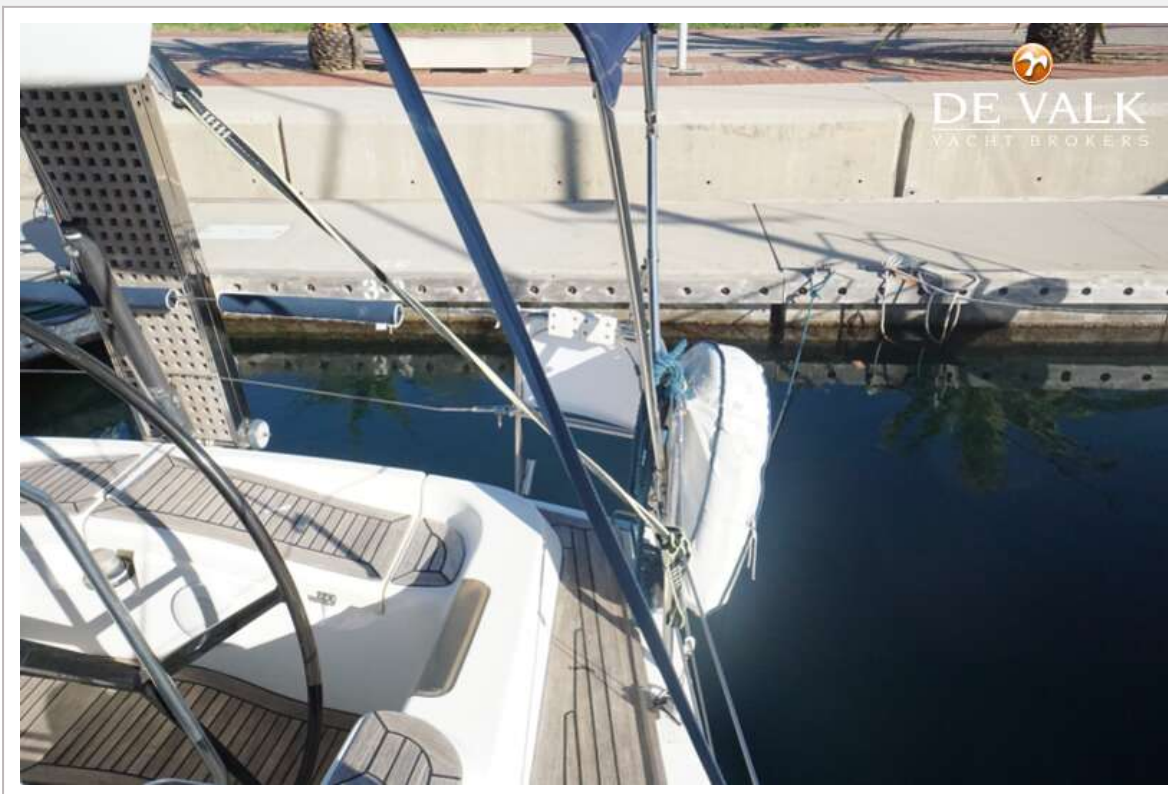
X-YACHTS X-46



X-YACHTS X-46



X-YACHTS X-46



X-YACHTS X-46



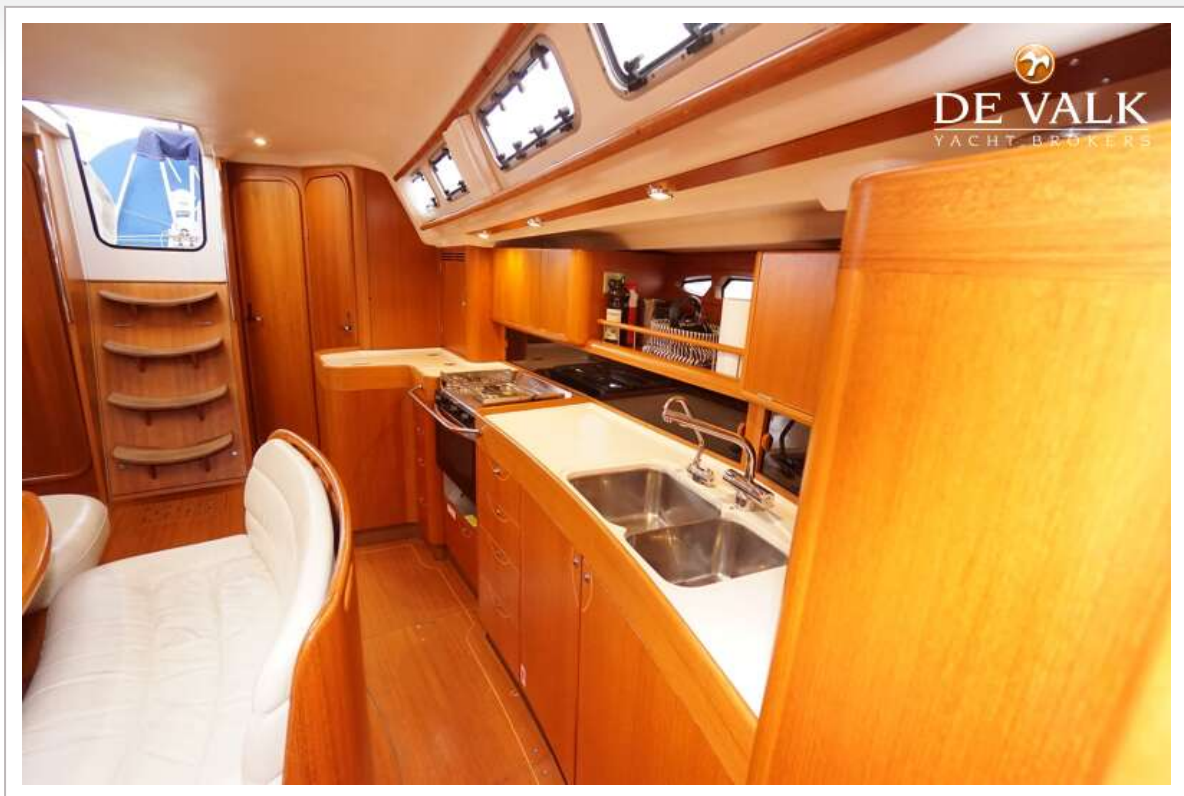
X-YACHTS X-46



X-YACHTS X-46



X-YACHTS X-46



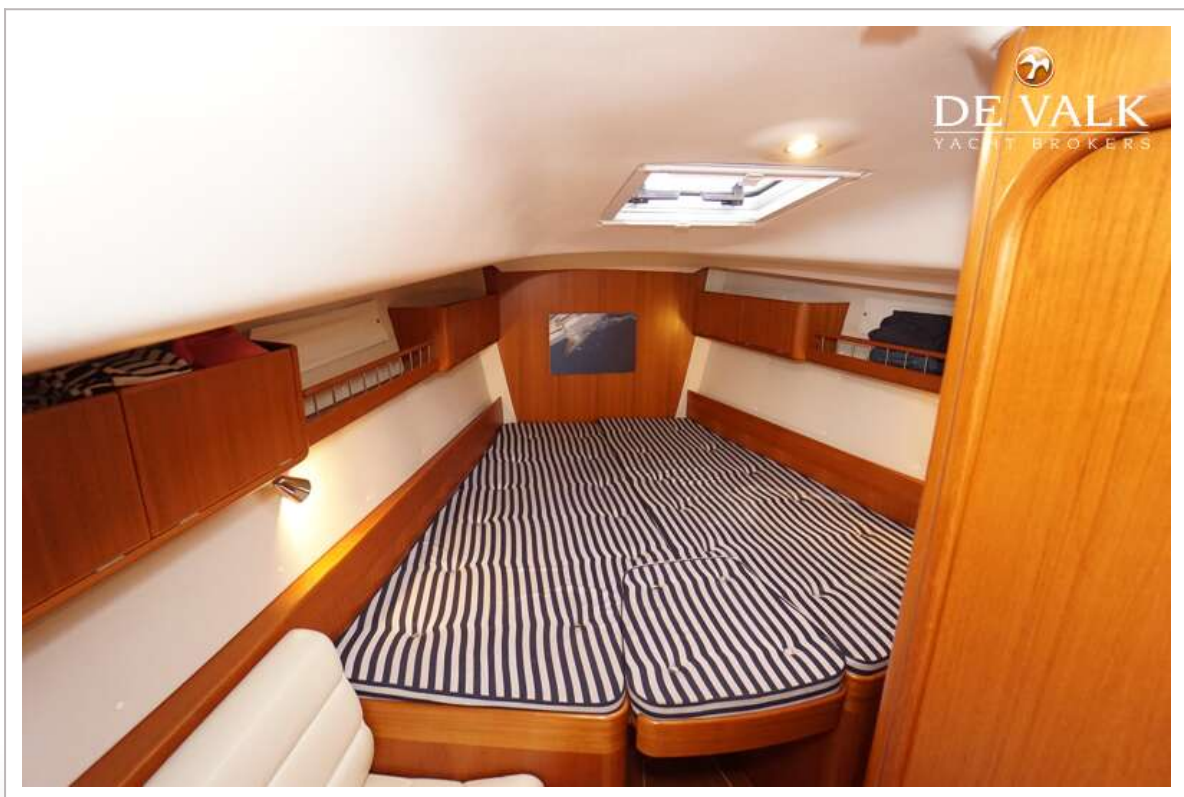
X-YACHTS X-46



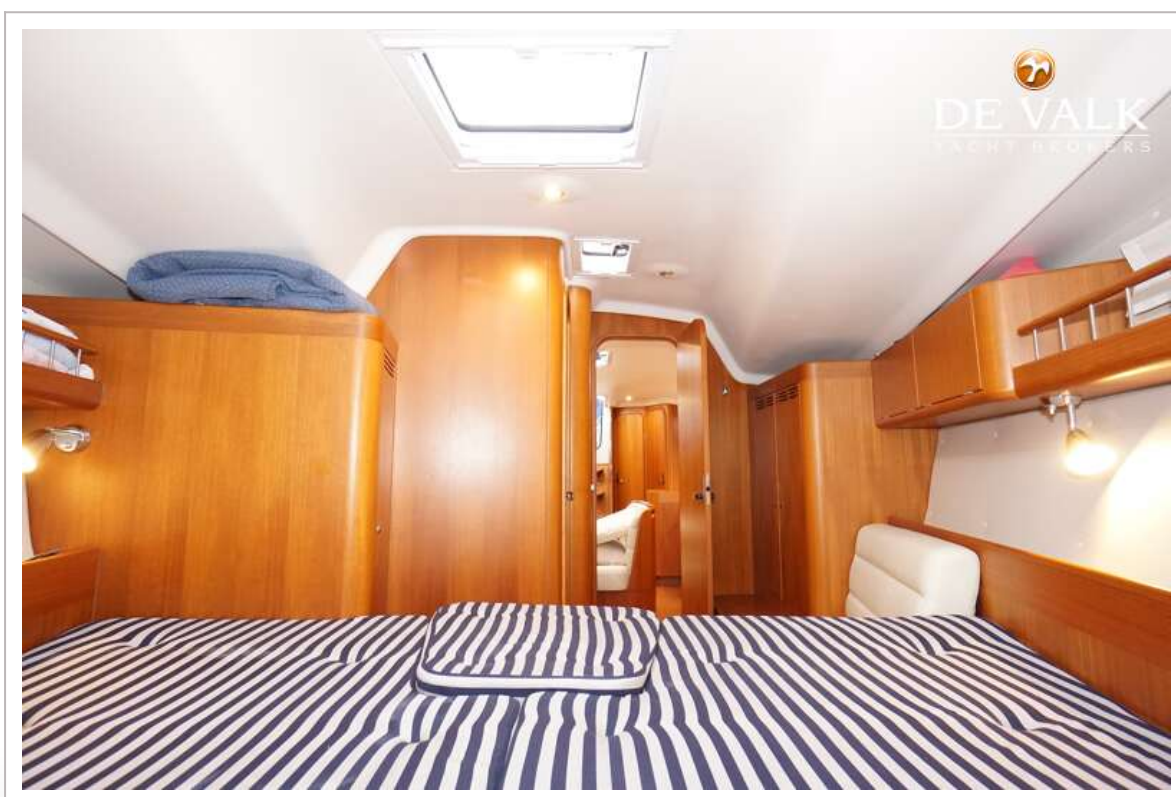
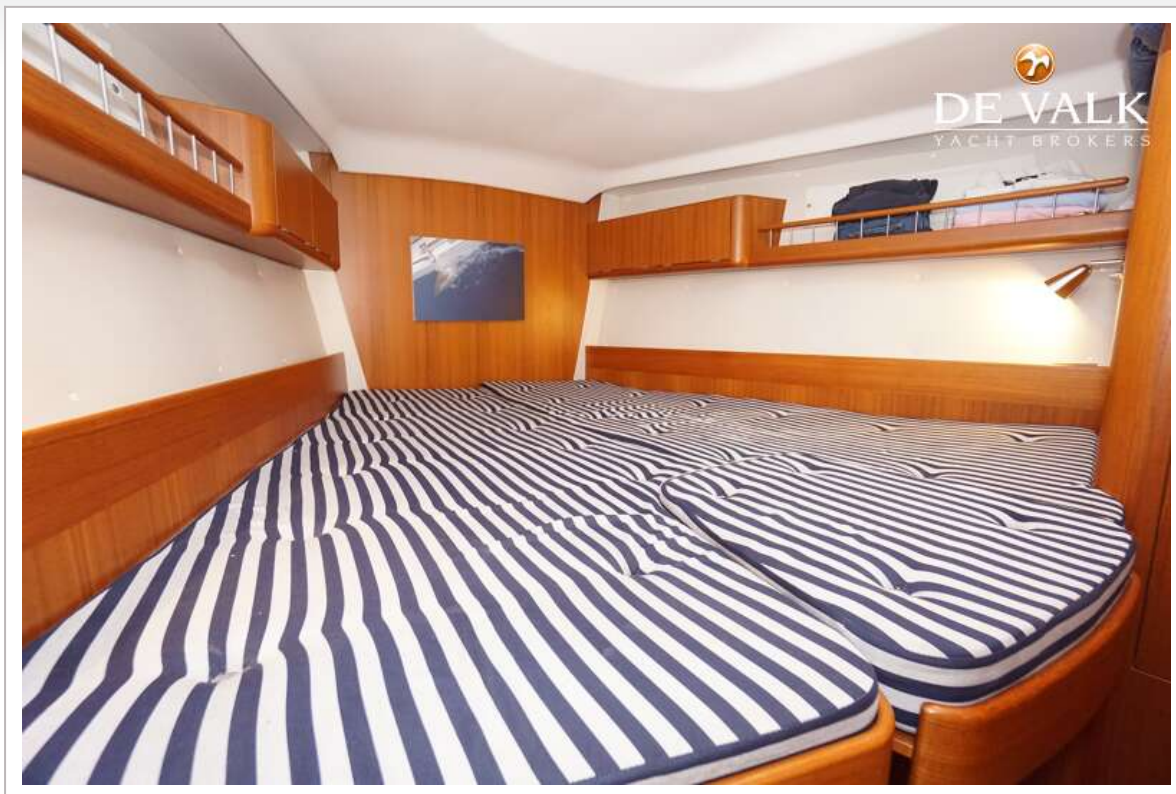
X-YACHTS X-46



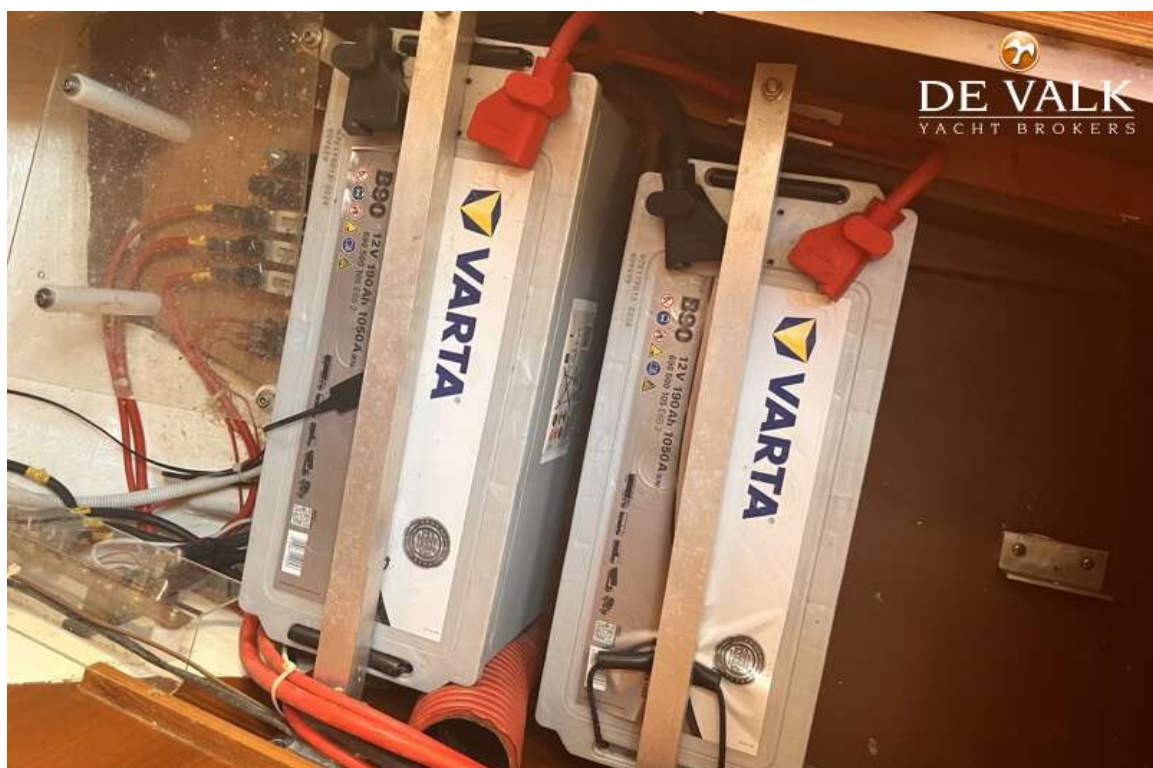
X-YACHTS X-46



X-YACHTS X-46



X-YACHTS X-46



X-YACHTS X-46

