



LUNSTROO SCHOONER 1750



LUNSTROO SCHOONER 1750

BROKER'S COMMENTS

Robust, reliable and comfortable: this Lunstroo pilothouse/deck salon schooner yacht is built for long journeys and all weather conditions. Thanks to the sheltered steering position inside, it offers safety and comfort even in bad weather. She has a practical layout with two cabins with private bathroom and a large galley with opposite dinette. Ideal for blue water cruising or as a sturdy liveaboard yacht. The schooner rig offers you many advantages; better balance and weight distribution, short-handed operation, flexible and efficient sail plan. 2nd Owner from new, berthed in Greece.

Marc Weijenberg

SPECIFICATIONS

Dimensions	17.50 x 5.00 x 2.50 (m)	Builder	De Reep
Built	1994	Cabins	2
Material	Steel	Berths	8
Engine(s)	1 x DAF DH825 diesel	Hp/Kw	138.00 (hp), 101.57 (kw)
Asking price	Under Offer (VAT)	Lying	contact sales office

CONTACT

Sales office	De Valk Thuishaven	Telephone	+31 35 5829042
Address	Peperstraat 7 1411 PX Naarden NL	E-mail	thuishaven@devalk.nl

DISCLAIMER

These particulars are given in good faith as supplied but cannot be guaranteed.



LUNSTROO SCHOONER 1750

GENERAL

Model	LUNSTROO SCHOONER 1750
Type	sailing yacht
LOA (m)	17,50
LWL (m)	13,15
Beam (m)	5,00
Draft (m)	2,50
Headroom (m)	1,95
Year built	1994
Builder	De Reep
Country	The Netherlands
Designer	Lunstroo
Displacement (t)	40
Ballast (tonnes)	lead in steel 8,5
Hull material	steel
Hull colour	blue
Hull thickness (mm)	5mm on 40cm frames
Hull shape	full bilged
Keel type	long keel
Superstructure material	steel
Rubbing strake	stainless steel
Deck material	steel 5mm
Deck finish	non-skid paint
Superstructure deck finish	teak
Cockpit deck finish	non-skid paint
Antifouling (year)	2025
Dorades	2 x plus solar vents
Window frame	aluminium Technautic
Window material	tempered glass 10mm
Deckhatch	Goiot, 3 x
Portholes	brass 10mm glas



LUNSTROO SCHOONER 1750

Insulation	glasswool Plus air-foil
Fuel tank (litre)	steel 2 x 100
Fuel tank 2 (litre)	steel 1 x 1250
Fuel daytank (litre)	steel 180 plus transfer pump
Freshwater tank (litre)	steel 2 x 1000
Blackwater tank (litre)	steel 150 + 450
Blackwater tank extraction	pump
Inside helm position	hydraulic
Outside helm position	hydraulic
Emergency tiller	yes
More info on paintwork	In 2022 uw body sandblasted and epoxy coated, hull sprayed in Awlgrip paint. Blackwatertank forward cleaned 2018 and aft 2023. Watertanks epoxy coated in 2017.
Extra info	The complete length overall is 20 mtrs. Four watertight sections by three bulkheads, of which one has watertight door.
Extra info	On deck you will find a lot of sq-feet of space. The decksalon/pilothouse with helmposition, offers you a lot of extra comfort, light and excellent visibillity.
Extra info	There is some cosmetic overhaul to be done as well as cleaning/painting the bilges. The asking price has been adjusted accordingly.

ACCOMMODATION

Cabins	2
Berths	8
Interior	mahogany
Floor	wood
Deck saloon	yes
Pilot house/deck saloon	with dinette and opening windows
Headroom saloon (m)	1,95
Heating	central hot water Kabola (18.000kcal)
Dinette to convert into berth	into double bed (dimensions 2,00 x 1,30m)
Opening door to aft deck	yes



LUNSTROO SCHOONER 1750

Galley	yes
Countertop	wood
Sink	stainless steel 1 x
Cooker	electric Siemens 4-burner (induction, 2021)
Microwave/oven combi	Panasonic (220v, 2019)
Fridge	Bosch 150ltr (220v)
Freezer	25 ltr box Dometic (24v)
Hot water system	on central heating 60 ltr
Water pressure system	electrical Wale pump (2025)
Coffee maker	Nespresso (220v)
Owners cabin	double bed
Bed length (m)	1,95 x 1,50m (headroom: 1,85m)
Wardrobe	hanging and shelves
Bathroom	en suite I
Toilet	en suite
Toilet system	electric Rheinstrom Y8 (freshwater)
Wash basin	in the bathroom
Shower	en suite (headroom 1,85m)
Guest cabin 1	v-bed
Bed length (m)	2,00 x 1,90m plus 2 x 1,95 x 0,55m, headroom: 1,90m
Wardrobe	hanging and shelves
Bathroom	separate II
Toilet	separate
Toilet system	electric Rheinstrom Y8 (freshwater)
Wash basin	in the bathroom
Shower	separate (headroom 1,90m)
Washing machine/dryer combi	Bosch Combi (220v, 2017)
Extra info	Opposite of the galley the dinette offers seating for 6 to 8 persons.

MACHINERY



LUNSTROO SCHOONER 1750

No of engines	1
Make	DAF
Type	DH825
HP	138
kW	101.57
Fuel	diesel
Year installed	1993
Cruising speed (kn)	7
Consumption (l/hr)	6
Engine hours	4250
Engine cooling system	closed keelcooling
Drive	shaft
Engine controls	bowden cable
Gearbox	hydraulic PRM
Bowthruster	electric Sidepower (10hp, 24v)
Exhaust	dry
Propeller type	fixed
Propeller blades	3
Propeller shaft material	steel
Shaft lubrication	grease
Electric bilge pump	220v heavy duty with manifold
Bilge alarm	yes
Electrical installation	12v/24v/220v
Generator	dry exhaust Mitsubishi 6kW (in box)
Start battery	2 x 90ah (2021)
Service battery	6 x LiFe YPO4 3,2v/300ah (2021) + 2 x AGM12v/165ah (2021 backup)
Generator battery	1 x 12v (2019)
Bowthruster battery	4 x Optima Red 12v/50ah (2016)
Windlass battery	electric winches 2 x 12v/95ah (2024)
Battery monitor	BMS123Smart (bluetooth) + Victron BMV602S + 2 x Victron BMV600S



LUNSTROO SCHOONER 1750

Battery charger	Mastervolt Chargemaster 24v/60-3 (2018)
Inverter	Victron Phoenix 24v/5000watt (2021)
Solar panel	4 x 180Watt (2020)
Shorepower	with cable
Extra info	Twin 24v alternators on main engine. One for start and one for LiFe batteries
Extra info	Vetus twin filter system for daytank/ engine/generator.

NAVIGATION

Compass	Sestrel (1993)
Multi control display	Raymarine P70
Depth sounder	Garmin Nexus (2014)
Log	Garmin Nexus (2014)
Windset	Garmin Nexus (2018)
VHF	Raymarine Ray260 (DSC) plus outside repeater
VHF handheld	Icom IC-M71 plus IC-M1EuroV
Autopilot	Raymarine Evolution EV200 hydraulic (2014)
Rudder angle indicator	via autopilot
Radar	Raymarine Quantum Q24C (2016)
Plotter	Raymarine Axiom+12 inside, plus Axiom+7 in cockpit (2023)
Navtex	Furuno NX300
Electronic chart(s)	Med 2024 / Carrib 2017 / West Europe 2018 / USA&Can 2018
AIS transponder	Raymarine AIS650 (2016)
Transmitter	SSB Icom IC-M802 (2016)
EPIRB	Kannad Sportpro+ (2016)
Navigation lights	Plus mast-lights
Extra info	Iridium Go (2016)

EQUIPMENT

Bimini	yes
Sun awning	2 x



LUNSTROO SCHOONER 1750

Cockpit cushions	Plus 6 x comfort seats
Cockpit table	foldable
Boarding ladder	yes
Deck shower	hot & cold
Anchor	Pool 90kg
Anchor chain	60mtr (12mm)
Anchor 2	Rocna 40kg
Anchor chain	100mtr (13mm, 2013)
Other ground tackle	Fortress FX55
Windlass	electrical 2 x Lewmar V5-24v
Capstan	2 x on Lewmar windlass's
Deck wash	yes
Dinghy	inflatable Highfield UL290 CSM (2018)
Outboard	Suzuki 6hp (4stroke, 2025)
Davits	aluminum
Davits controls	manual
Sea railing	stainless steel
Pushpit	yes
Pulpit	yes
Life raft	valise (or bag) Seago (2016)
Life raft (pers)	4
Last life raft survey	service date expired
Lifejackets	4 x normal / 2 x automatic
Lifebuoy	1 x
Safety lines on deck	yes
Fenders	yes
Mooring lines	yes
Spare parts	pumps/engine/autopilot/Victron inverter/et cetera
Tools	(optional)
TV	Insignia 24inch
Radio-cd player	Jamo
Speakers in salon	yes



LUNSTROO SCHOONER 1750

Clock - barometer	yes
Fire extinguisher	2 x 2ltr (2021)
Extinguisher in engine room	Co2 (2010)
Extra info	Bauer dive compressor (2016), various dive-gear (2016), Sailrite sail-sowingmachine, Panasonic breadmaker, Philips Airfryer, Bynolty binoculaires, Canon printer, Philips Hue led-light strips.

RIGGING

Rigging	schooner
Standing rigging	wire (installed 2016)
Brand mast	Van de Reep; Oregaon Pine (epoxy glued,1993)
Material mast	wood
Spreaders	2 x set (new 2021)
Keel stepped mast	Main mast keel-stepped, forward mast deck-stepped.
Mainsail	UK Sails/De Vries 65m2 (2015)
Mainsail cover	+ Lazy Jacks
Main staysail	19m2
Mizzen staysail	UK Sails/De Vries 22m2 (2015)
Genoa	UK Sails/De Vries 54m2 (2015) on Profurl furler
Staysail	UK Sails/De Vries 27m2 (2015)
Yankee	72m2
Reefing System	slabreefing
Primary sheet winch	2 x Andersen 58STE (electric, variespeed)
Secondary sheet winch	mainsheet 1 x Andersen 46STE (electric, variespeed)
Halyard winches	1 x Andersen 52STE electric, variespeed plus 2 x Bariant manual
Spi-pole	aluminium (5,50m)
Extra info	Spars & booms stripped and varnished in 2021 with PP from Epifanes.
Extra info	Spare genoa is stored onboard



LUNSTROO SCHOONER 1750



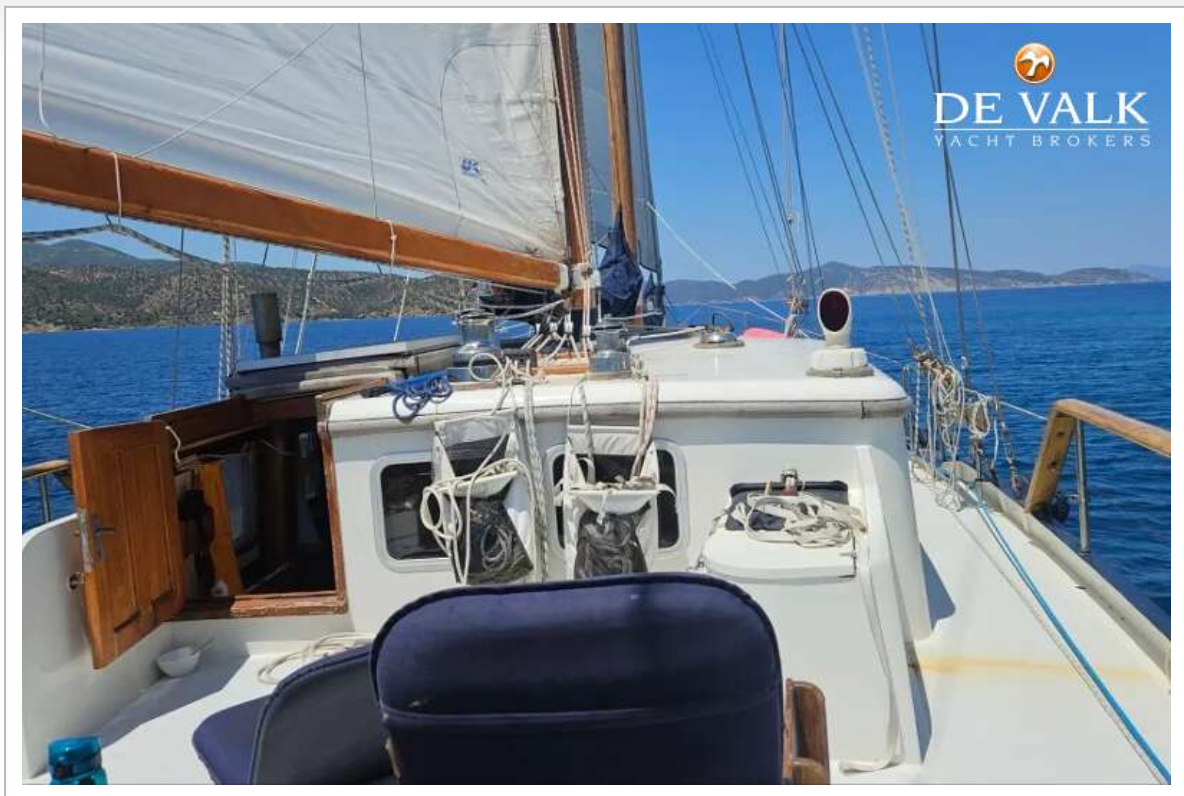
LUNSTROO SCHOONER 1750



LUNSTROO SCHOONER 1750



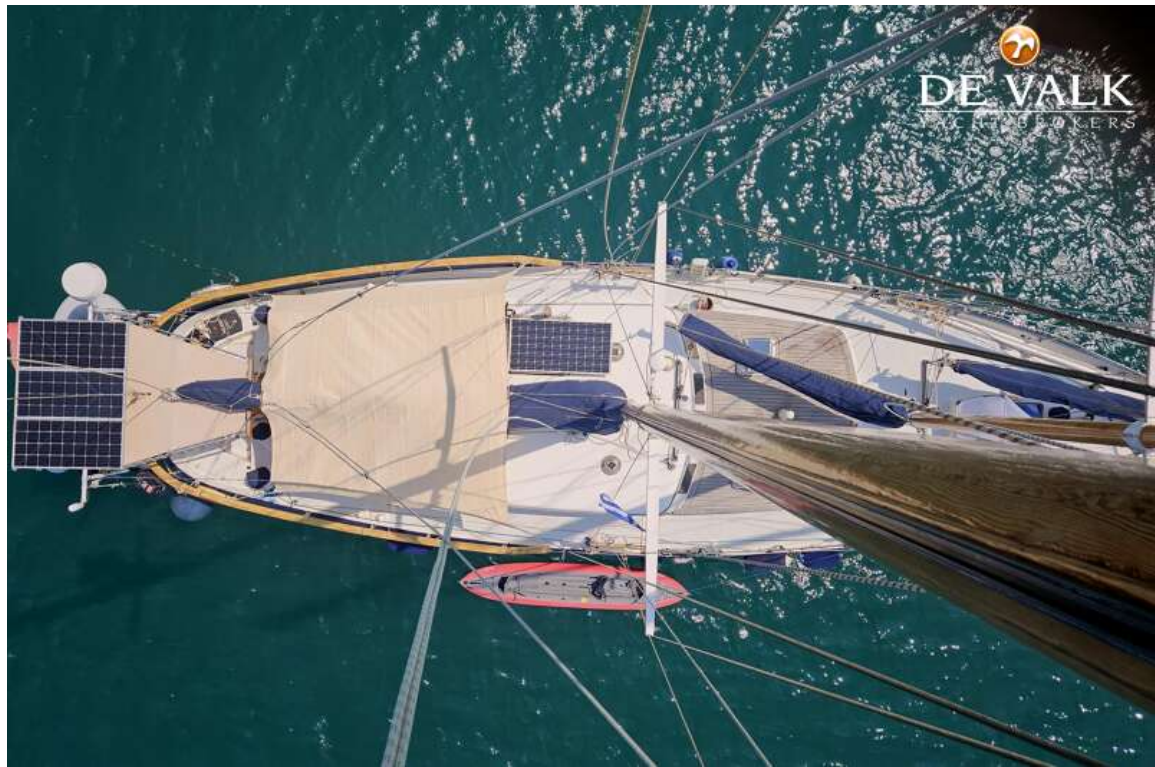
LUNSTROO SCHOONER 1750



LUNSTROO SCHOONER 1750



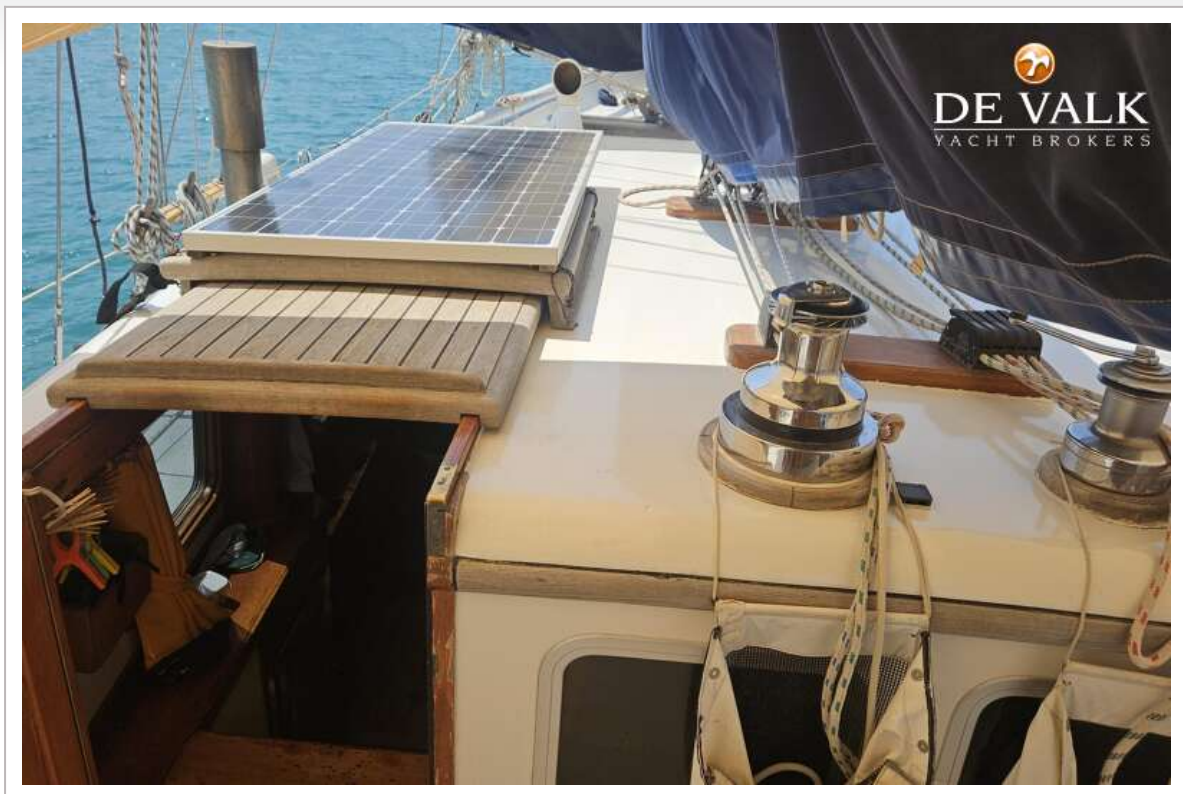
LUNSTROO SCHOONER 1750



LUNSTROO SCHOONER 1750



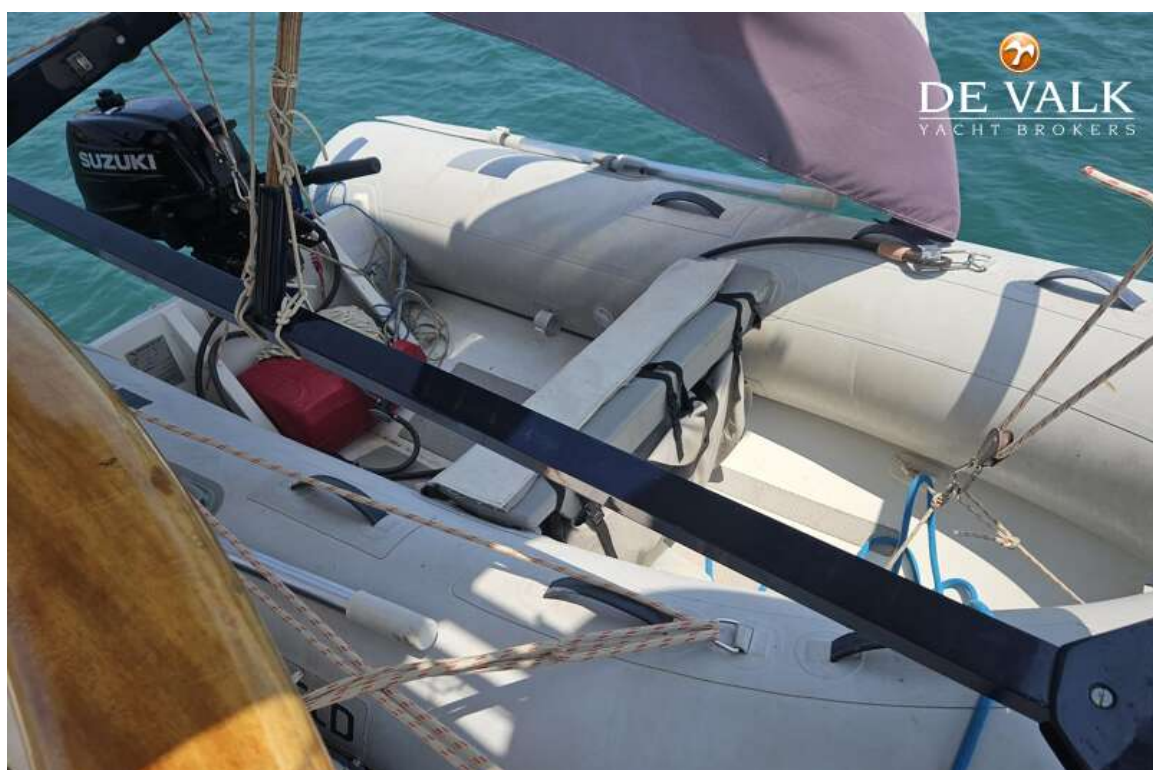
LUNSTROO SCHOONER 1750



LUNSTROO SCHOONER 1750



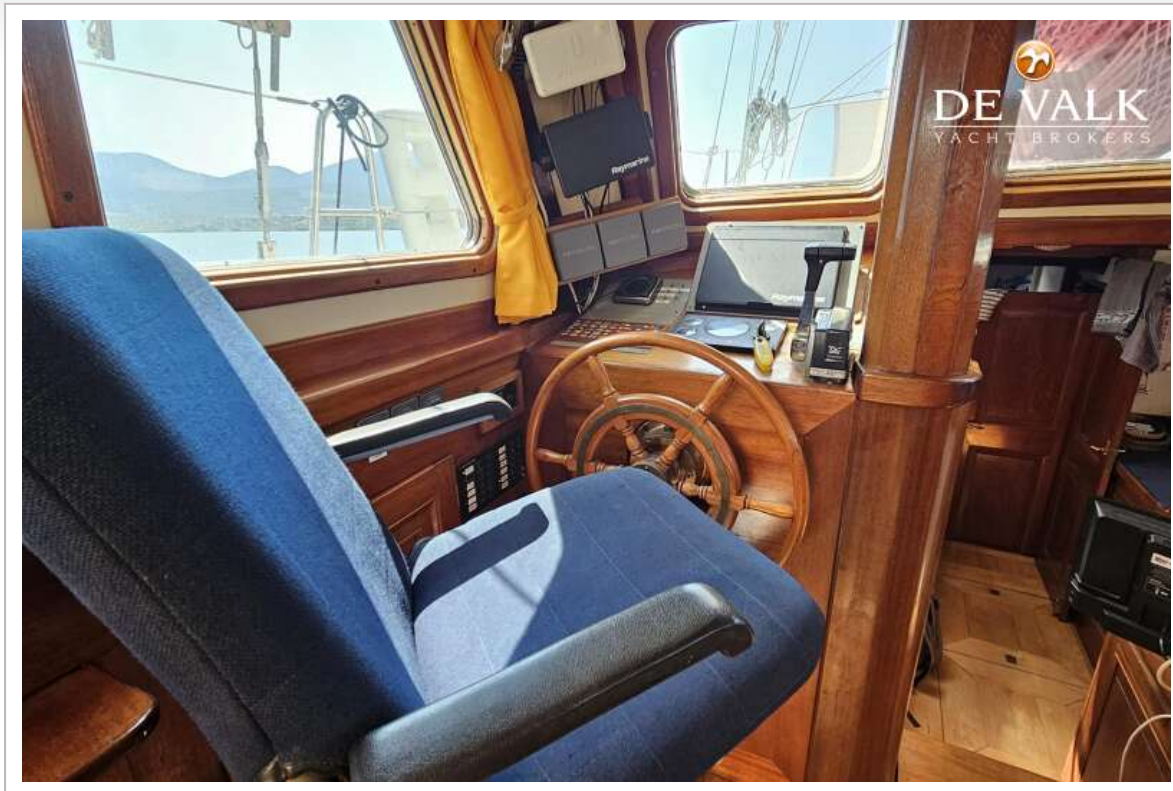
LUNSTROO SCHOONER 1750



LUNSTROO SCHOONER 1750



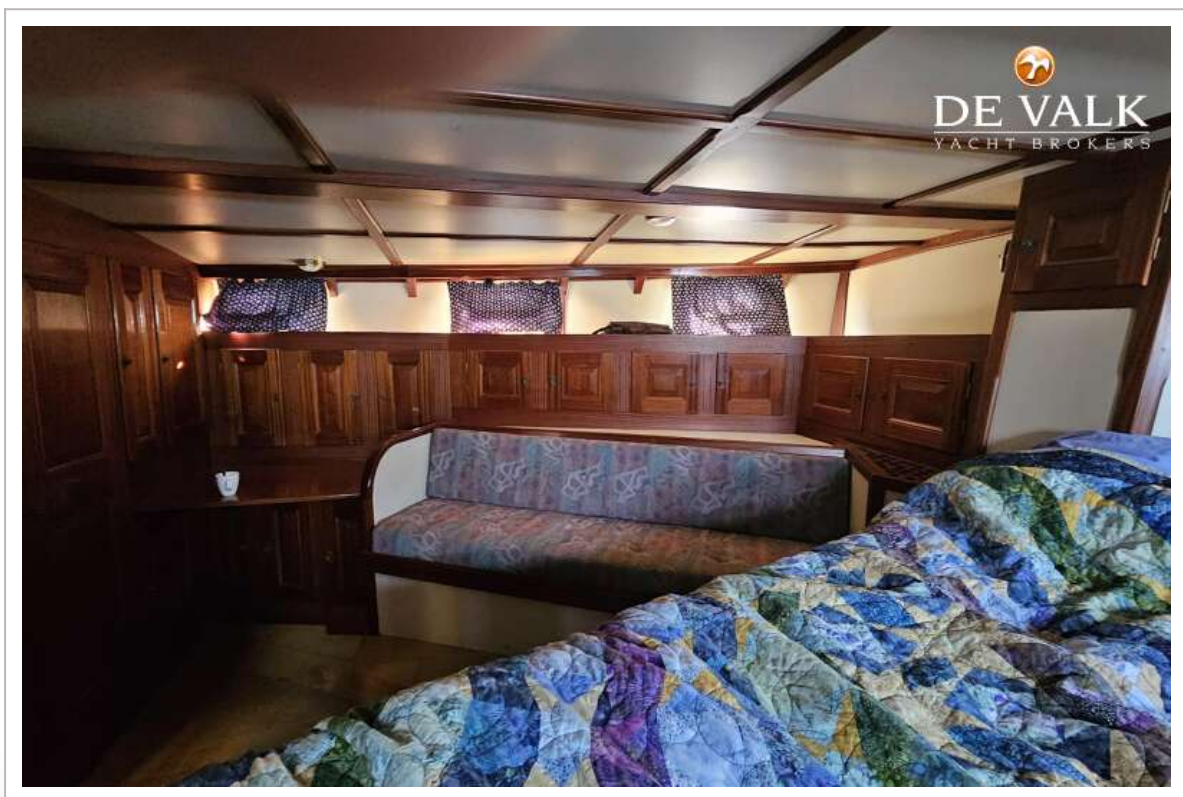
LUNSTROO SCHOONER 1750



LUNSTROO SCHOONER 1750



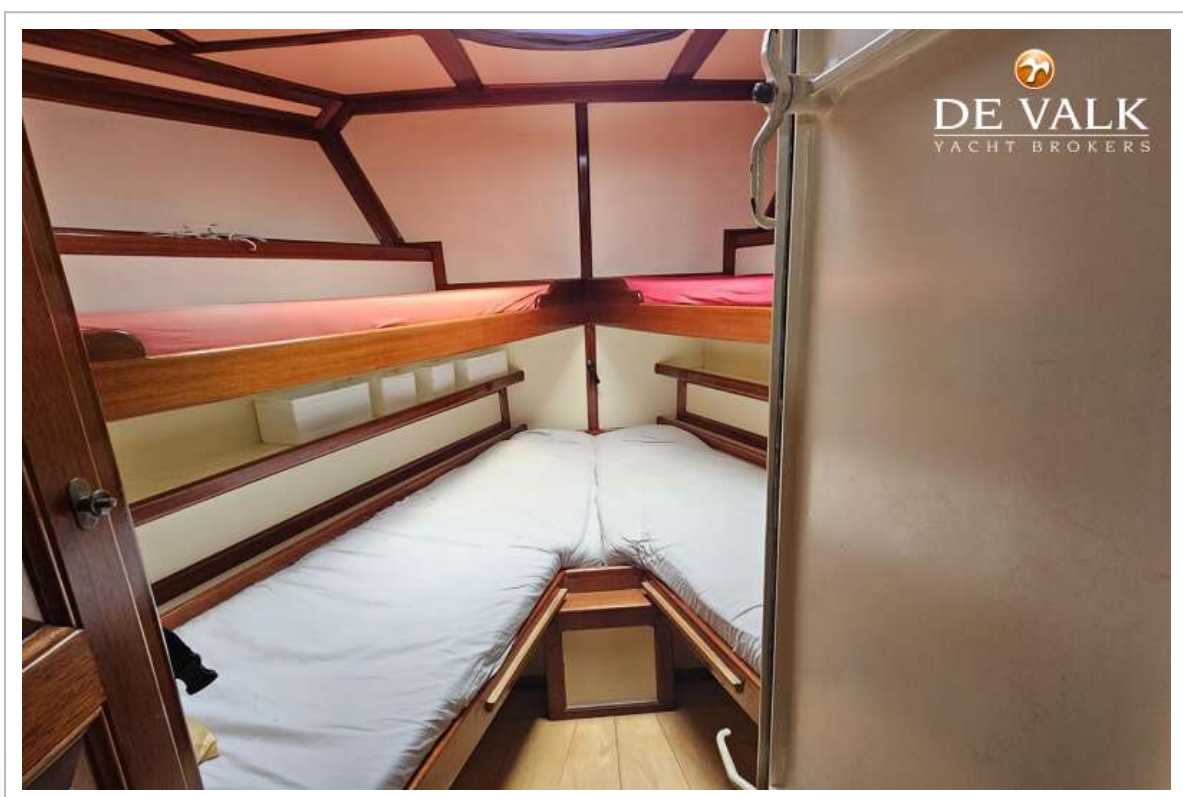
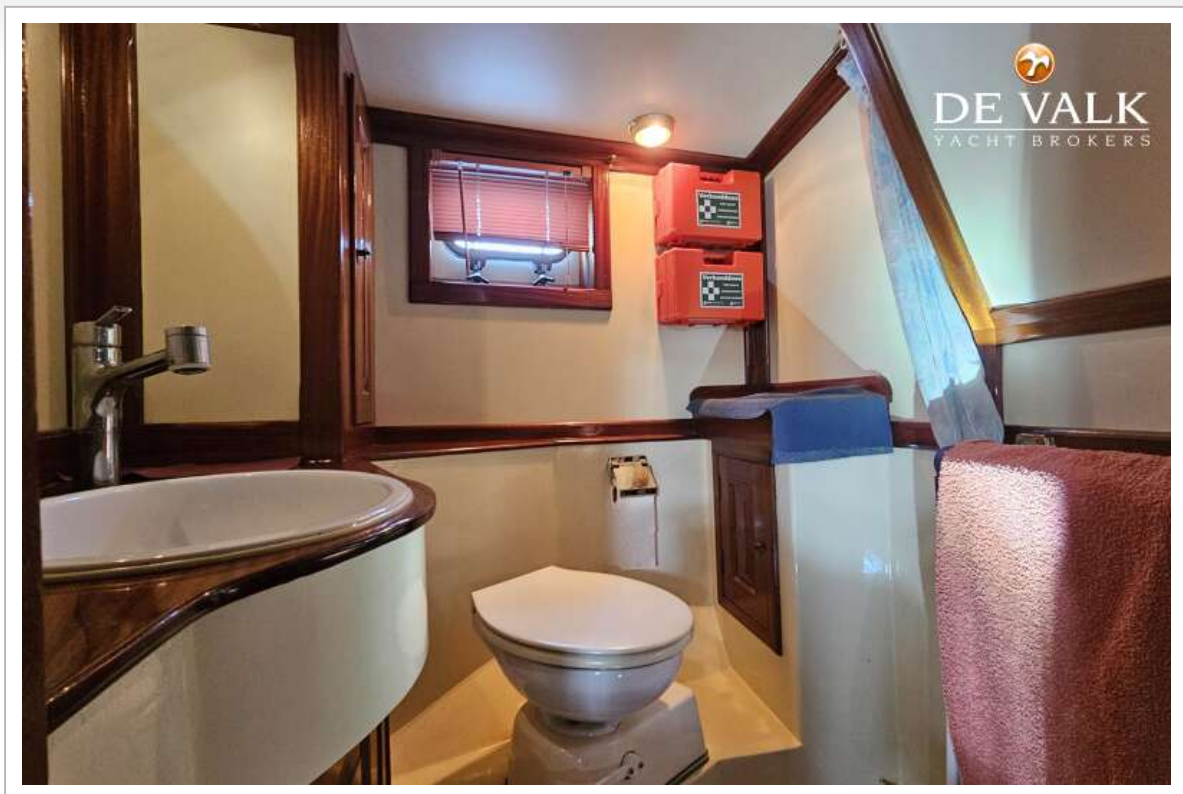
LUNSTROO SCHOONER 1750



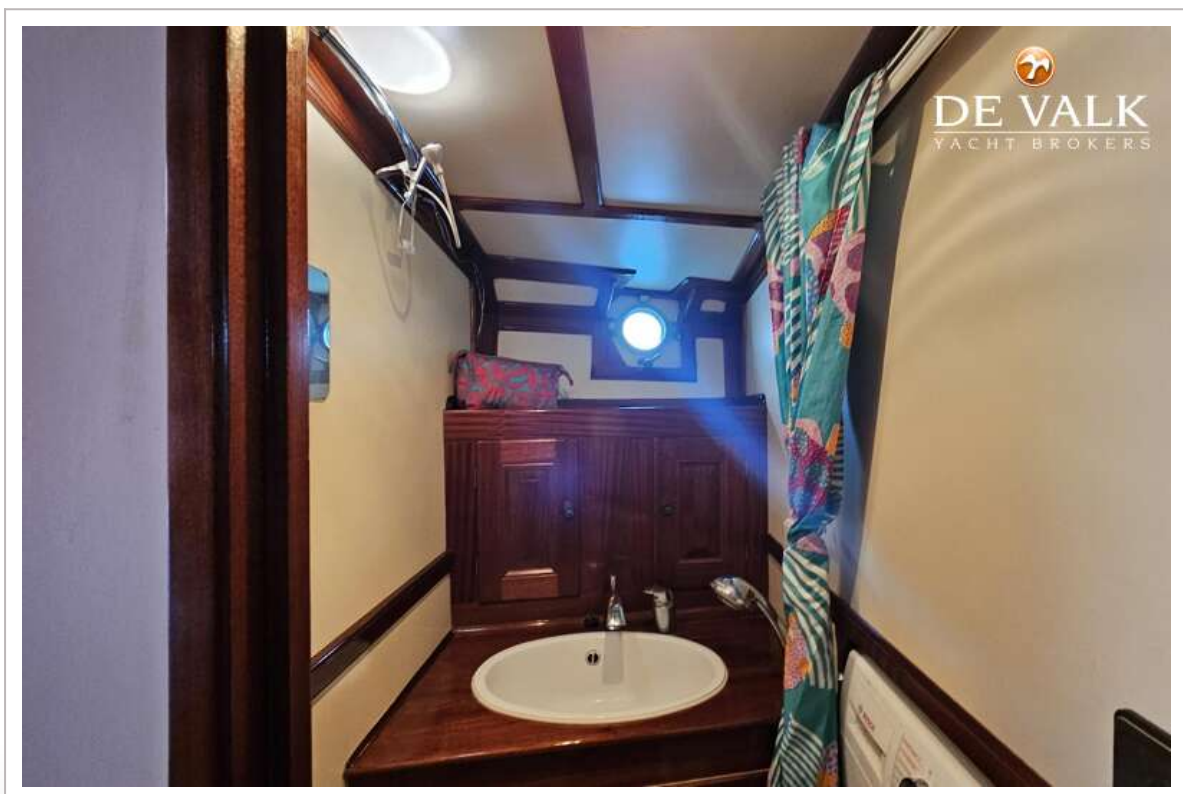
LUNSTROO SCHOONER 1750



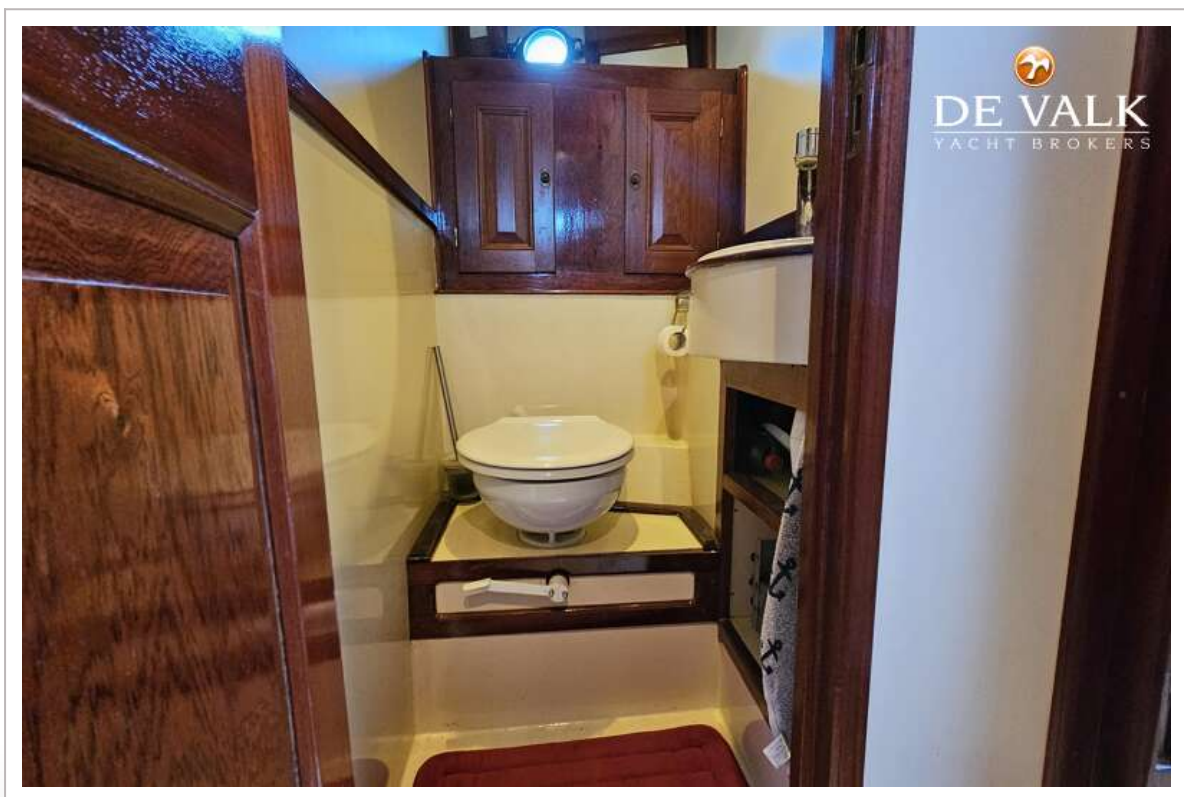
LUNSTROO SCHOONER 1750



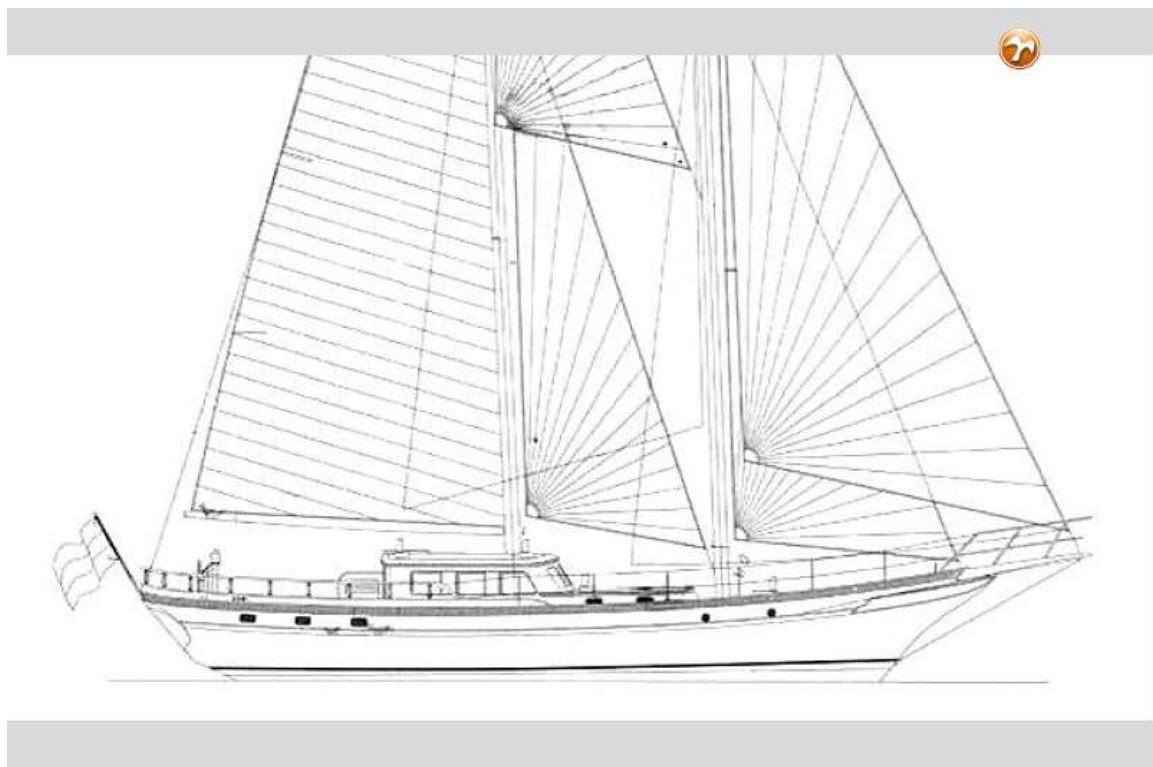
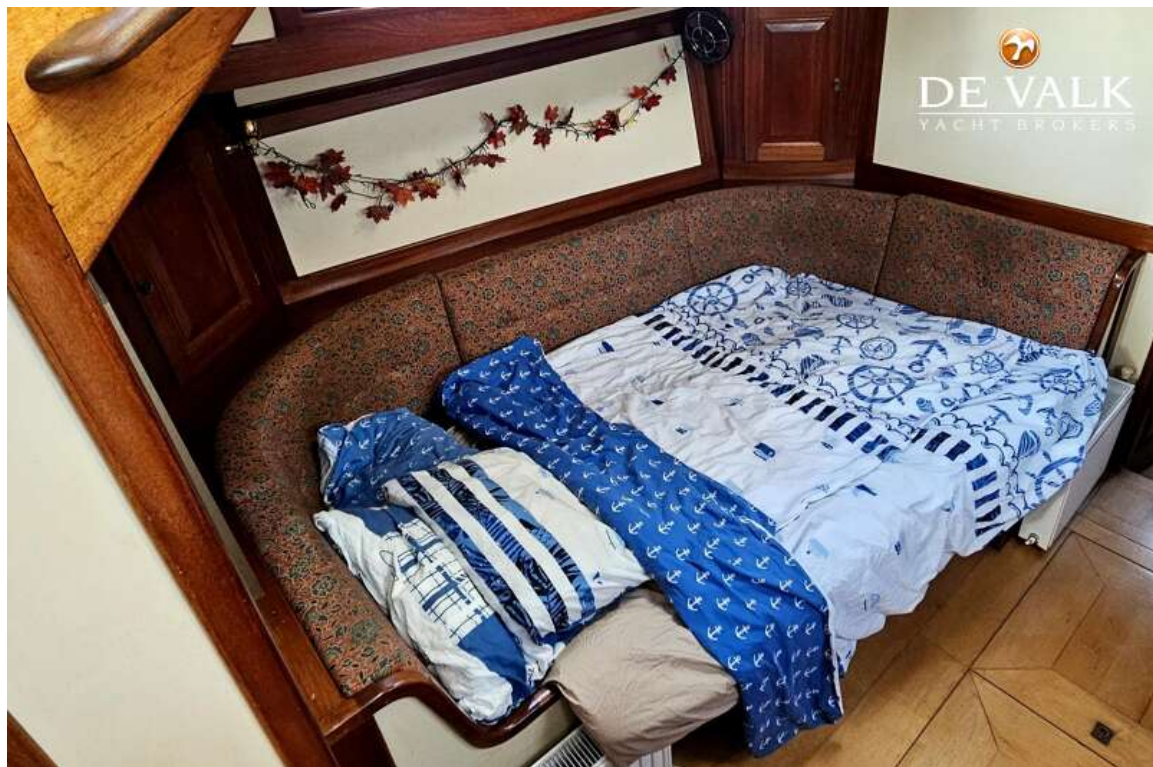
LUNSTROO SCHOONER 1750



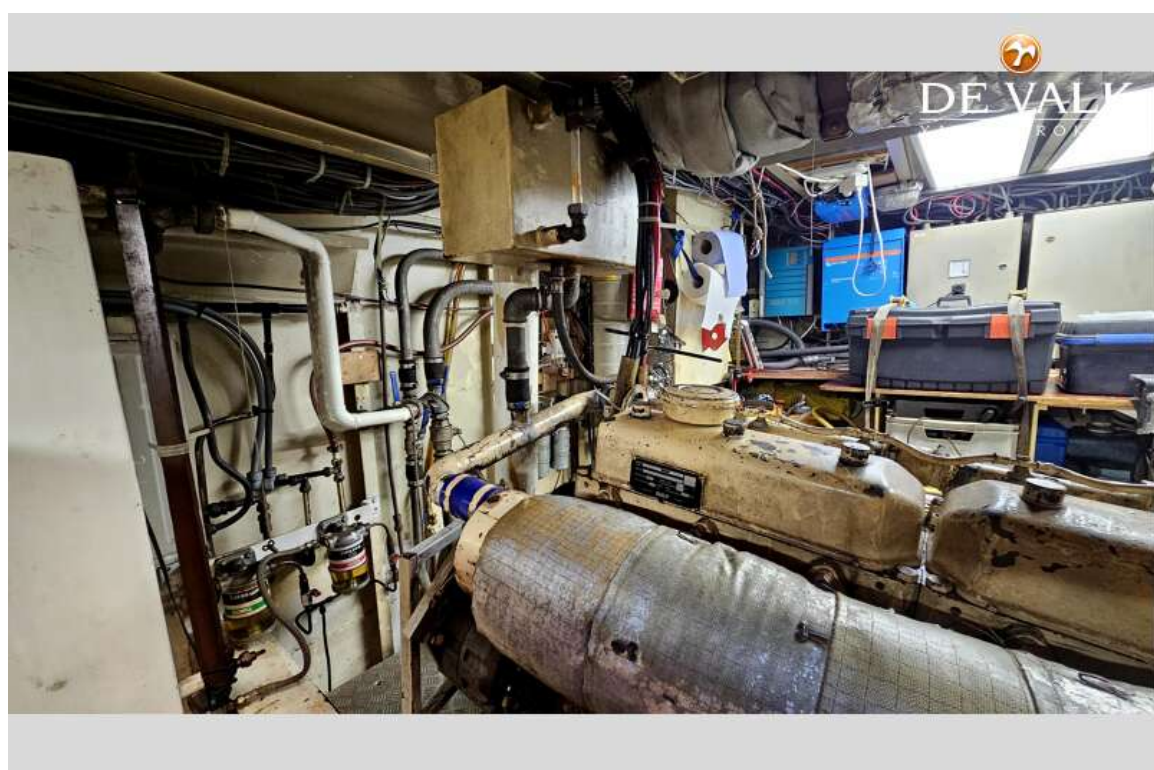
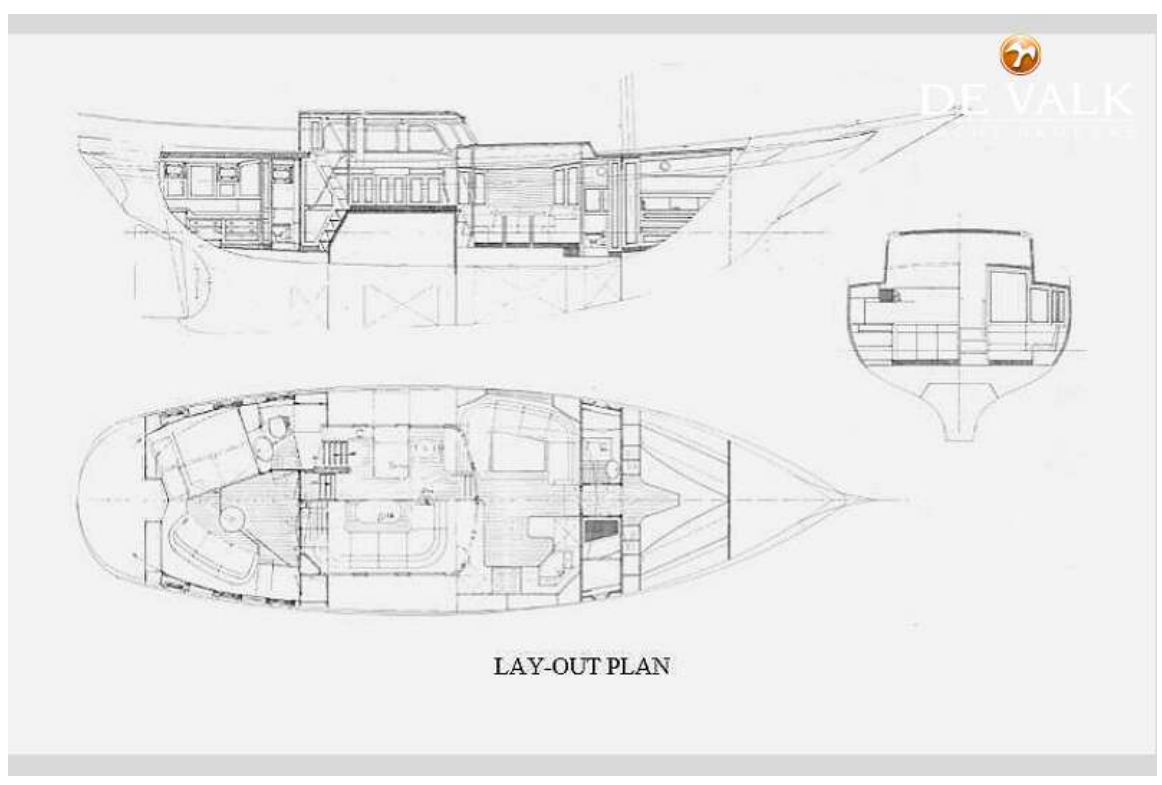
LUNSTROO SCHOONER 1750



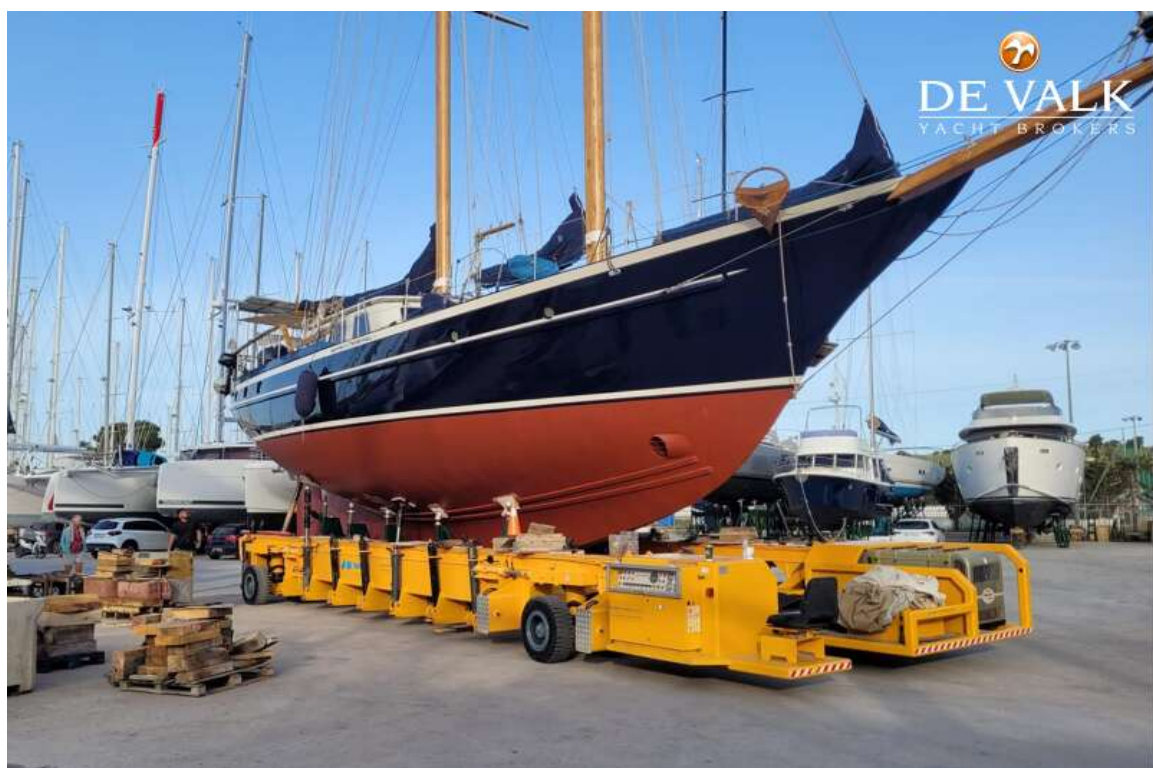
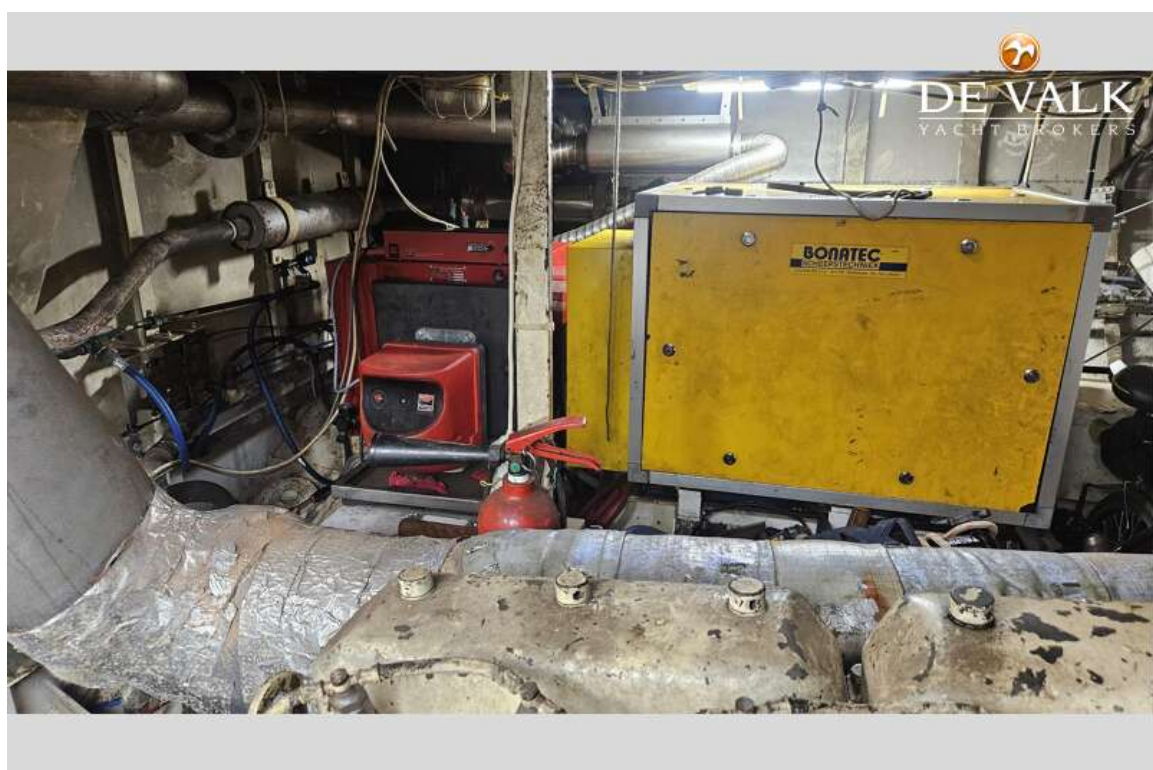
LUNSTROO SCHOONER 1750



LUNSTROO SCHOONER 1750



LUNSTROO SCHOONER 1750



LUNSTROO SCHOONER 1750

