



DE VALK  
YACHT BROKERS



## CONTEST 36 KETCH



DE VALK  
YACHT BROKERS

# CONTEST 36 KETCH

## BROKER'S COMMENTS

Space, performance, reliability, comfort and seaworthiness are some key characteristics for this Contest 36 Ketch. An extensive technical and partly cosmetic refit has been carried out to prepare 'Alba' for a trip around the globe. Study the details and you'll notice that there's not much left to do. Will you make your dreams, together with this bluewater cruiser, come true? She is located in our sales marina. You're very welcome to step on board.

*Reinier van der Wolf*

## SPECIFICATIONS

<b>Dimensions</b>	10.95 x 3.40 x 1.90 (m)	<b>Builder</b>	Conyplex
<b>Built</b>	1976	<b>Cabins</b>	2
<b>Material</b>	GRP	<b>Berths</b>	7
<b>Engine(s)</b>	1 x Perkins M50 diesel	<b>Hp/Kw</b>	50.00 (hp), 36.80 (kw)
<b>Asking price</b>	sold (VAT )	<b>Lying</b>	at sales office

## CONTACT

<b>Sales office</b>	De Valk Monnickendam B.V.	<b>Telephone</b>	+31 (0)299 65 63 50
<b>Address</b>	Hoogedijk 6 1145 PM Katwoude NL	<b>E-mail</b>	monnickendam@devalk.nl

## DISCLAIMER

These particulars are given in good faith as supplied but cannot be guaranteed.



# CONTEST 36 KETCH

## GENERAL

Model	CONTEST 36 KETCH
Type	sailing yacht
LOA (m)	10,95
LWL (m)	8,80
Beam (m)	3,40
Draft (m)	1,90
Air draft (m)	14,20
Year built	1976
Builder	Conyplex
Country	The Netherlands
Designer	Dick Zaal
Ballast (tonnes)	3
Hull material	GRP
Hull colour	blue
Hull shape	round-bilged
Keel type	fin keel
Superstructure material	GRP
Rubbing strake	wood - teak + stainless steel strip
Deck material	GRP
Deck finish	non-skid moulded in
Superstructure deck finish	non-skid moulded in
Cockpit deck finish	teak
Antifouling (year)	and zincs new in 2023
Window frame	aluminium
Window material	tempered glass
Deckhatch	3 X
Fuel tank (litre)	stainless steel - ca.150 L
Level indicator (fuel tank)	Wema
Freshwater tank (litre)	150 L + 80 L
Level indicator (freshwater)	Wema



<b>Blackwater tank extraction</b>	deck extraction + pump
<b>Wheel steering</b>	electric
<b>Outside helm position</b>	cable steering
<b>More info on hull</b>	New keel bolts, keel in epoxy coating in 2016 (invoice + photos available). Rudder type: Full skeg hung rudder.
<b>Extra info</b>	The entire steering system - JEFA - is new installed in 2016 (quadrant, sheaves, chain, compass, pedestal, steering wheel, etc.)
<b>Extra info</b>	Rubbing strake + stainless steel strip new in 2020.
<b>Extra info</b>	Watertanks, water pressure system + filters new 2020. Dieseltank cleaned in 2023 + installation of inspection hatch. Double - switchable - dieselfilter system w/magnetic filter.

## ACCOMMODATION

<b>Cabins</b>	2
<b>Berths</b>	7
<b>Interior</b>	teak
<b>Floor</b>	teak and holly - new/nieuw/neu 2020
<b>Headroom saloon (m)</b>	1.95 m
<b>Sliding roof</b>	yes
<b>Heating</b>	diesel ducted hot air - Autotherm new/nieuw/neu 2023
<b>Chart table</b>	yes
<b>Aft Cabin</b>	yes
<b>Convertible berth</b>	salon settee PS & SB can be used as a berth
<b>Galley</b>	yes
<b>Countertop</b>	wood
<b>Sink</b>	stainless steel
<b>Cooker</b>	calor gas - 3 burner + oven new/nieuw/neu 2020
<b>Gas alarm</b>	+ carbon monoxide alarm new in 2022
<b>Fridge</b>	Isotherm compact; new compressor 2020
<b>Water pressure system</b>	electrical
<b>Owners cabin</b>	double bed + single bed



Bed length (m)	at portside 1,98 / 0,99 / 0,45 M & starboard 1,98 / 0,45 M
Wardrobe	hanging and shelves
Guest cabin 1	v-bed
Bed length (m)	2,00 X 0,55
Wardrobe	hanging and shelves
Toilet	shared - Jabsco
Extra info	Jabsco toilet new in 2020 and in 2022 a new, odorless hose

## MACHINERY

No of engines	1
Make	Perkins
Type	M50
HP	50
kW	36.80
Fuel	diesel
Year installed	1982
Year of overhaul	2008 & major tune-up / service (timing belt, raw waterpump, engine mounts, exhaust elbow + hose, Vetus NLP 10 liter waterlock, heat exchanger cleaned, new filters, oil and coolant fluid) in 2023
Engine cooling system	seawater
Drive	shaft
Gearbox	mechanical - Hurth
Engine controls	bowden cable
Exhaust	watercooled
Propeller type	fixed
Propeller blades	2 - balanced in 2023
Propeller shaft material	stainless steel
Electric bilge pump	yes
Electrical installation	total refit in 2020
Start battery	1 X 100 Ah - new 2020
Service battery	2 X 90 Ah - new 2020



# CONTEST 36 KETCH

Battery monitor	Mastervolt LCD touchscreen - new 2020
Battery charger	Mastervolt Chargemaster plus 12/75 3; new in 2020
Solar panel	2x and SmartSolar charge controller MPPT 100 I 20; all new in 2022
Shorepower	with cable
Extra info	Engine compartment new insulation in 2022
Extra info	Hurth gearbox serviced in 2023; new oil, seal and new damper plate

## NAVIGATION

Compass	Plastimo
Depth sounder	Raymarine St 60+
Log	Raymarine ST 60+
Windset	Raymarine ST 60+ (needs calibration; now factory settings)
VHF	ICOM-IC M505
VHF handheld	Standard Horizon HX-40
Autopilot	Raymarine EV200 sail linear + ACU200 + Raymarine P70; new 2023
Rudder angle indicator	yes
AIS transponder	EM-trak B400 Class B; new 2022
Navigation lights	LED
Extra info	All electrical wiring and lighting in masts replaced in 2023. 3 X new VHF antenna (AIS + VHF + spare) and new LED deck lighting.

## EQUIPMENT

Sprayhood	new in 2016 and impregnated in 2023
Cockpit cover	new in 2016 and impregnated in 2023
Cockpit cushions	yes
Boarding ladder	stainless steel - new/nieuw/neu in 2023
Anchor	Rocna - 20 kg; new/nieuw/neu 2022
Anchor chain	60 m / 8mm Lofrans grade 40; new 2022



Windlass	manual
Outboard support	yes
Sea railing	wire
Grab rail (superstructure)	teak - new/nieuw/neu 2022
Pushpit	yes
Pulpit	yes
Life raft	valise (or bag)
Last life raft survey	valid till 2021
Radar reflector	new 2022
Fenders	yes
Mooring lines	yes
Radio-cd player	Kenwood
Speakers in salon	yes
Clock - barometer	- hygrometer
Fire extinguisher	2 X new in 2022
Extra info	Gas locker + deaeration new in 2020. Gas hoses + pressure regulator new 2022
Extra info	Reason for sale; due to family expansion and change of plans, the owners have decided to purchase a larger sailing vessel.
Extra info	Comprehensive set of folder book files, 6 in total, containing all original Dick Zaal's and Contest's design plans, manuals, refit details and invoices, boat information and much more.

## RIGGING

Rigging	ketch
Standing rigging	wire - * extra info
Material mast	aluminium
Mainsail cover	new in 2022
Fully battened mainsail	22,68 m2 - new in 2016 - hardly used
Mizzen	9,30 m2 - new in 2016 - hardly used
Mizzen sailcover	new in 2022



# CONTEST 36 KETCH

<b>Genoa</b>	Year and exact size unknown; is in good condition. Bought second hand and tailored by sailmaker.
<b>Genoa furler</b>	Furlex 204S - new 2016
<b>Gennaker</b>	age unknown - still in good condition
<b>Backstay adjuster</b>	tackle
<b>Boomvang</b>	tackle
<b>Genoa sheetwinches</b>	Andersen 46 Two-Speed - new 2022
<b>Spi-pole</b>	aluminium
<b>Extra info</b>	* new wires standing rigging in 2016. Entire running rigging new in 2022

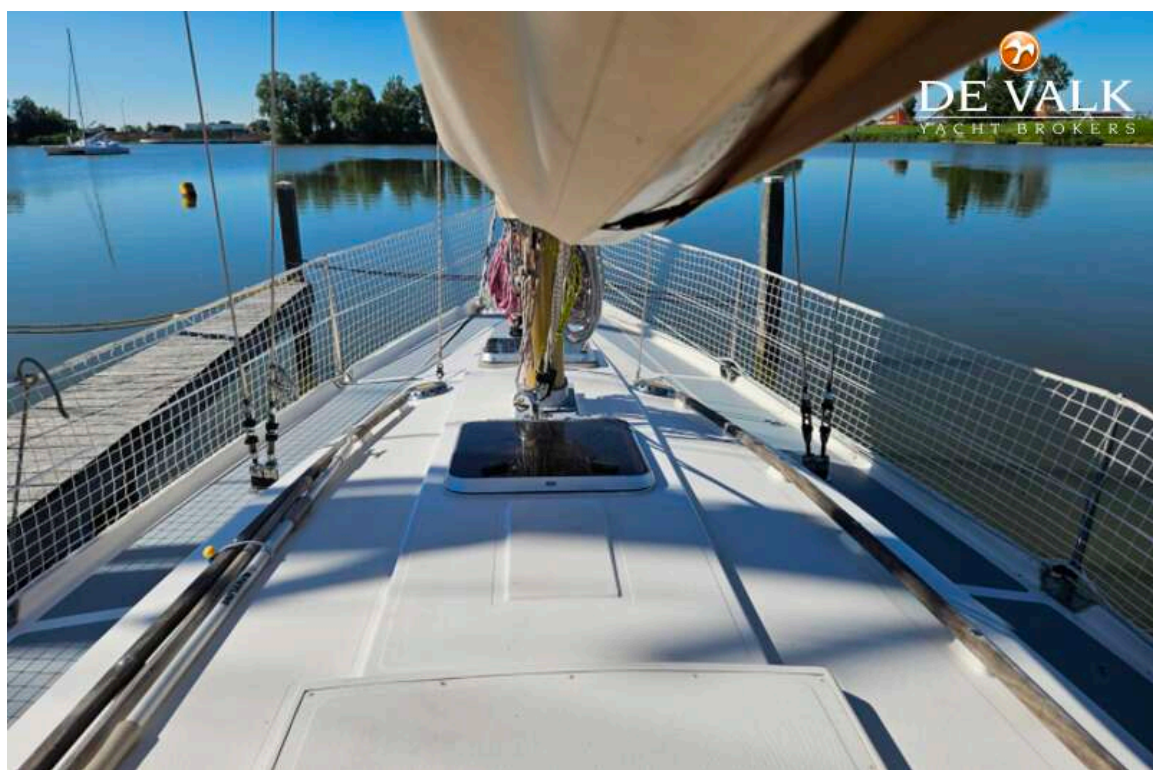
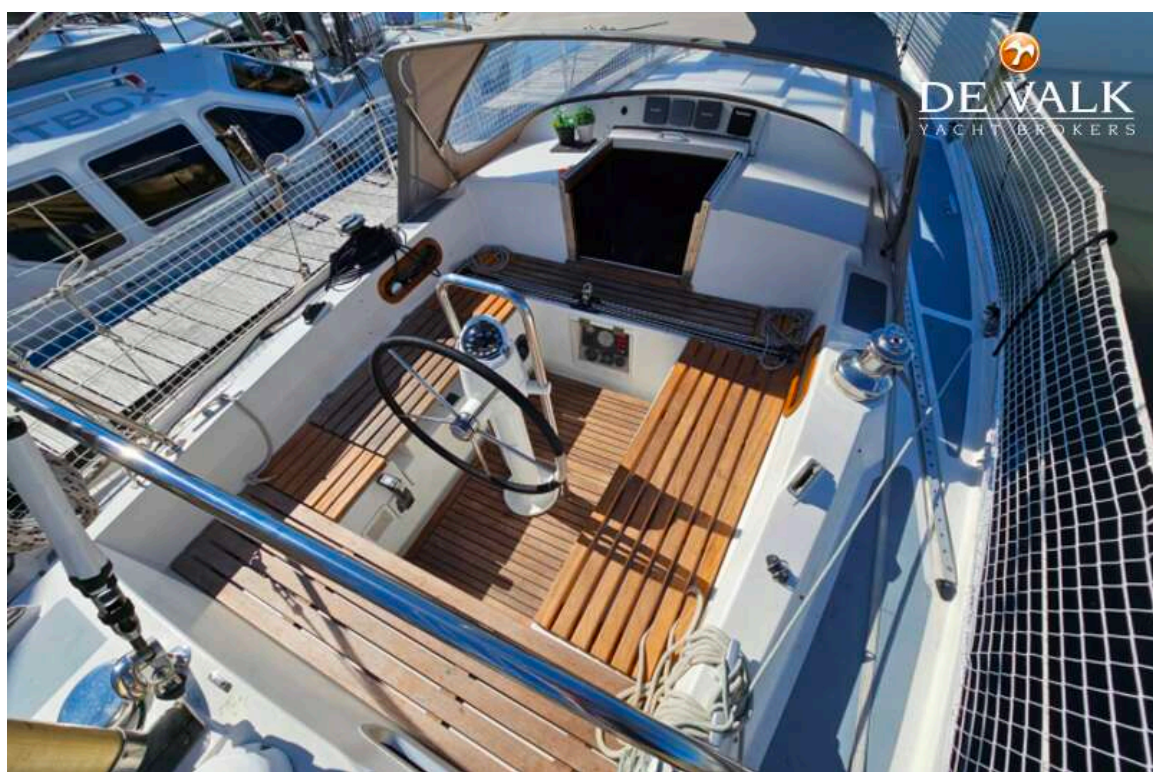




# CONTEST 36 KETCH

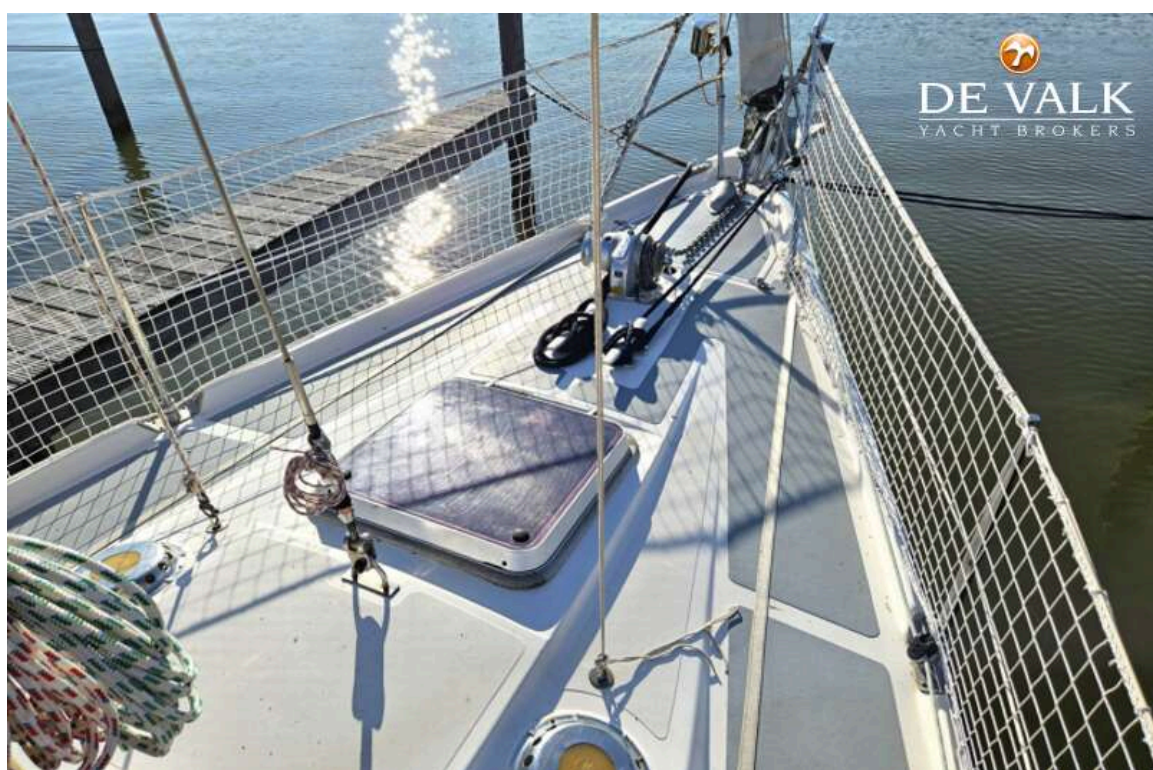
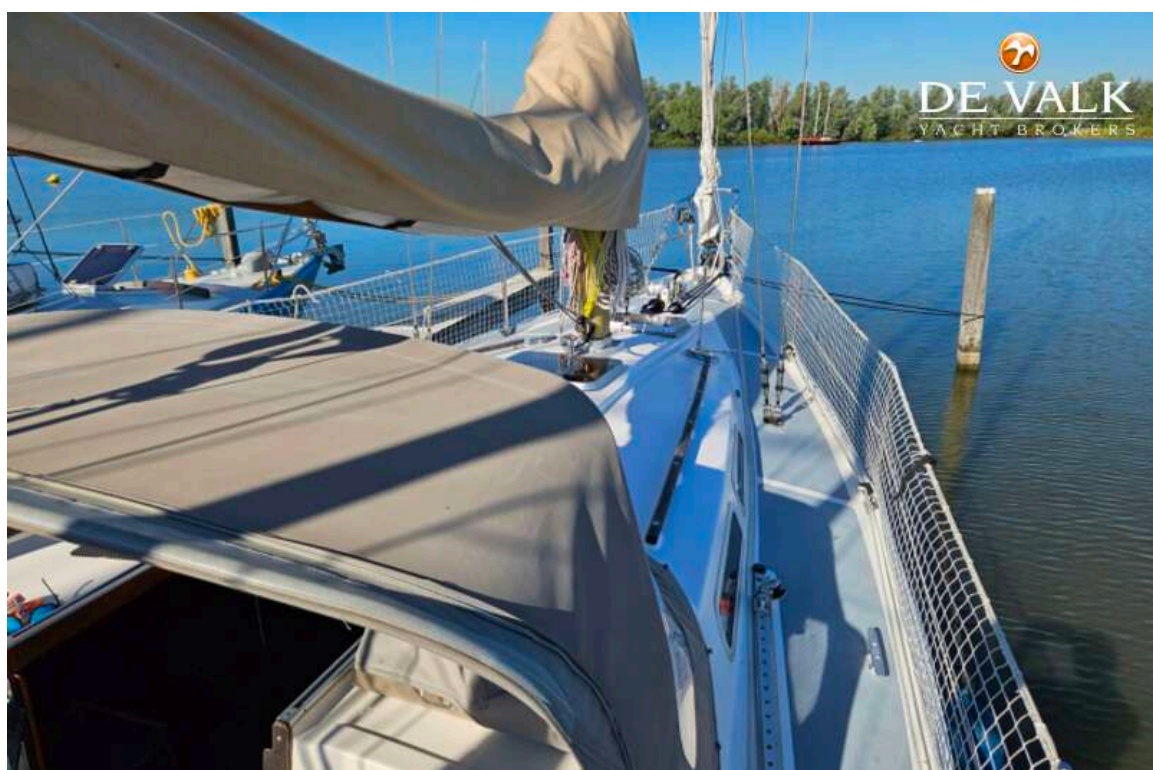


# CONTEST 36 KETCH





# CONTEST 36 KETCH



## CONTEST 36 KETCH



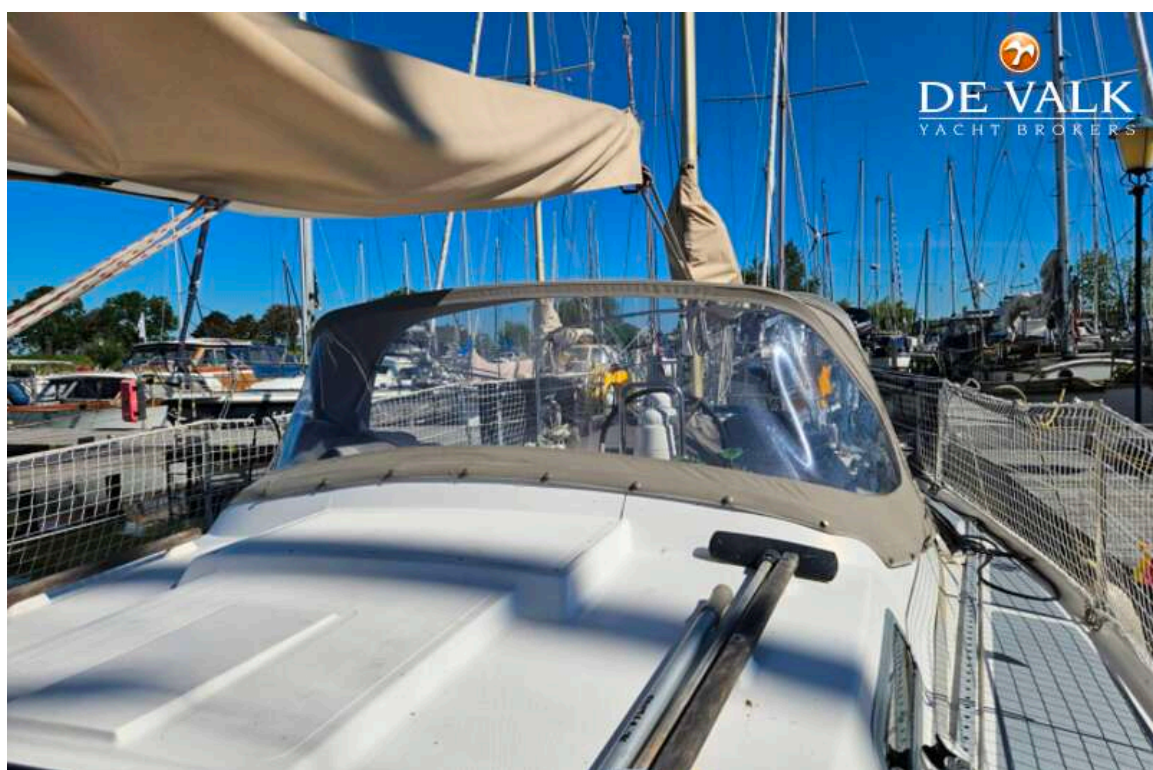


# CONTEST 36 KETCH



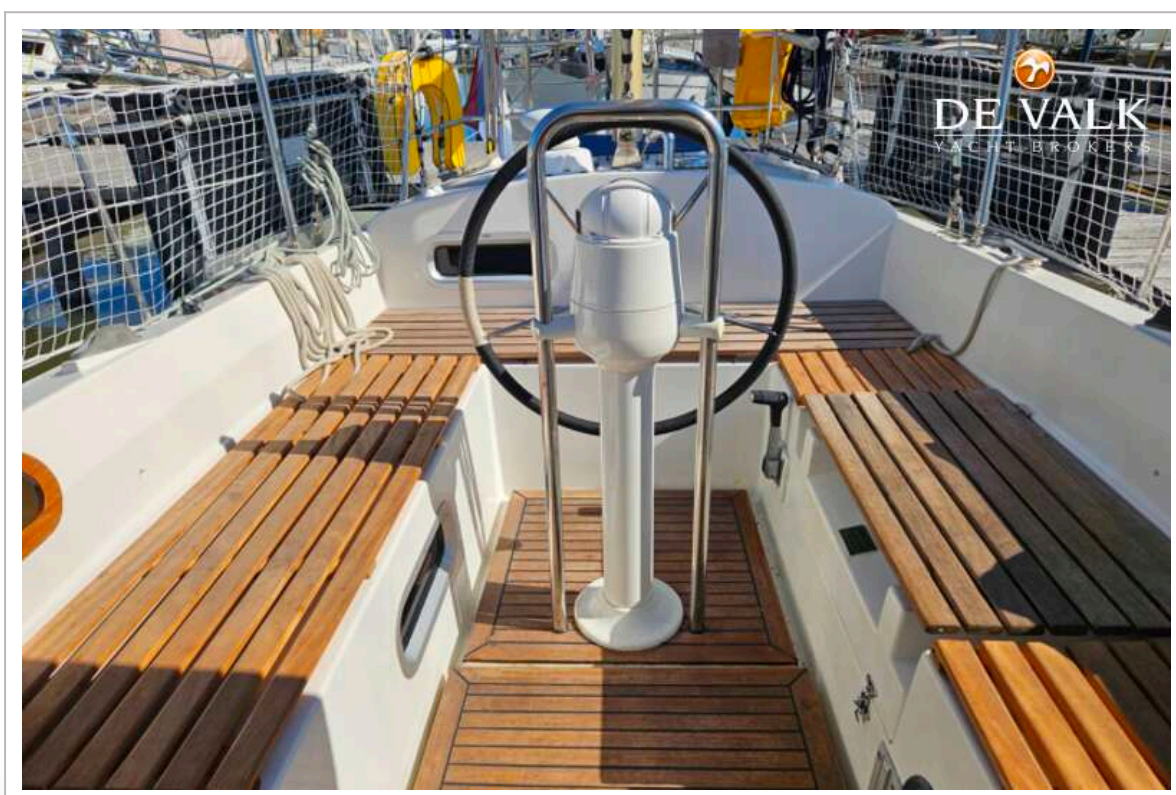


## CONTEST 36 KETCH





# CONTEST 36 KETCH



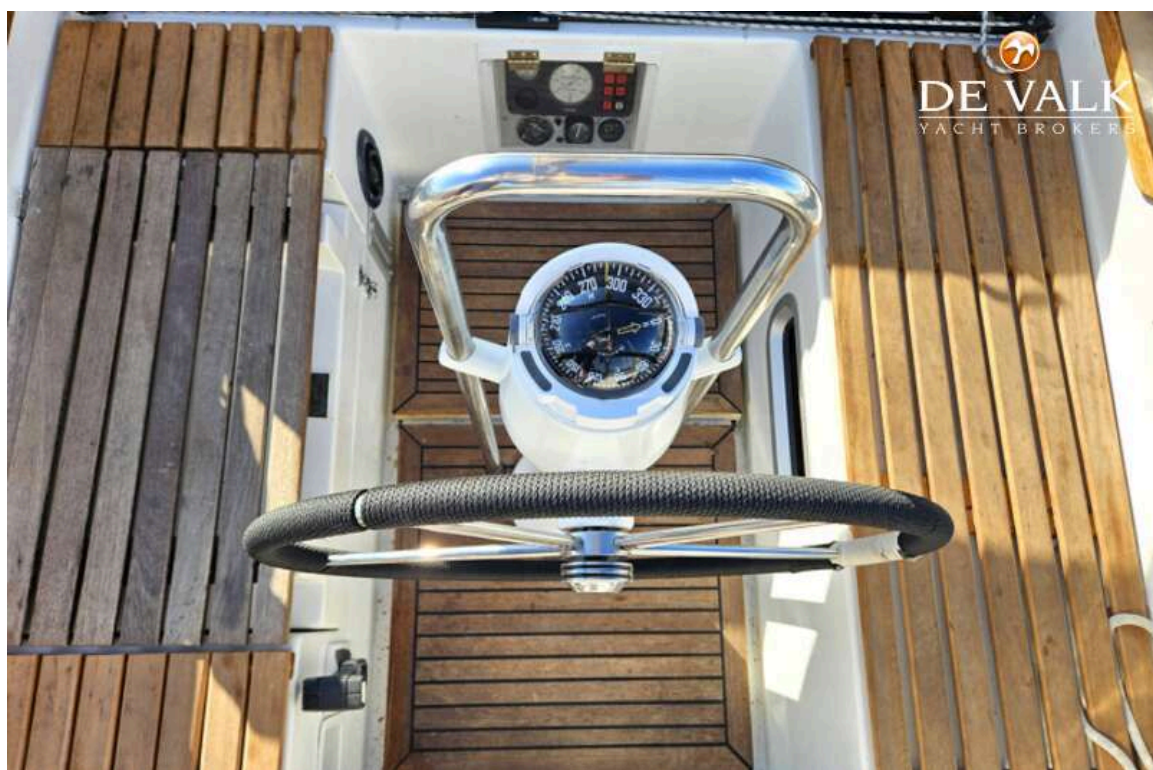


## CONTEST 36 KETCH





## CONTEST 36 KETCH



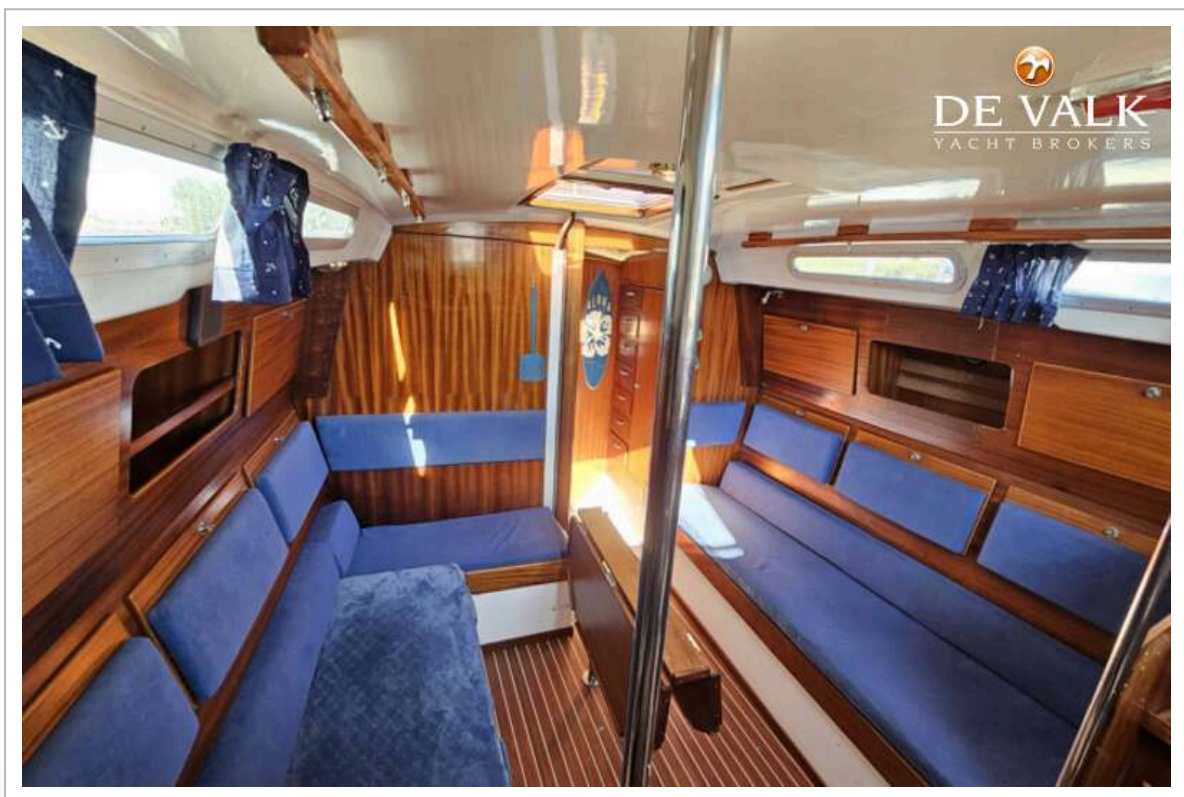
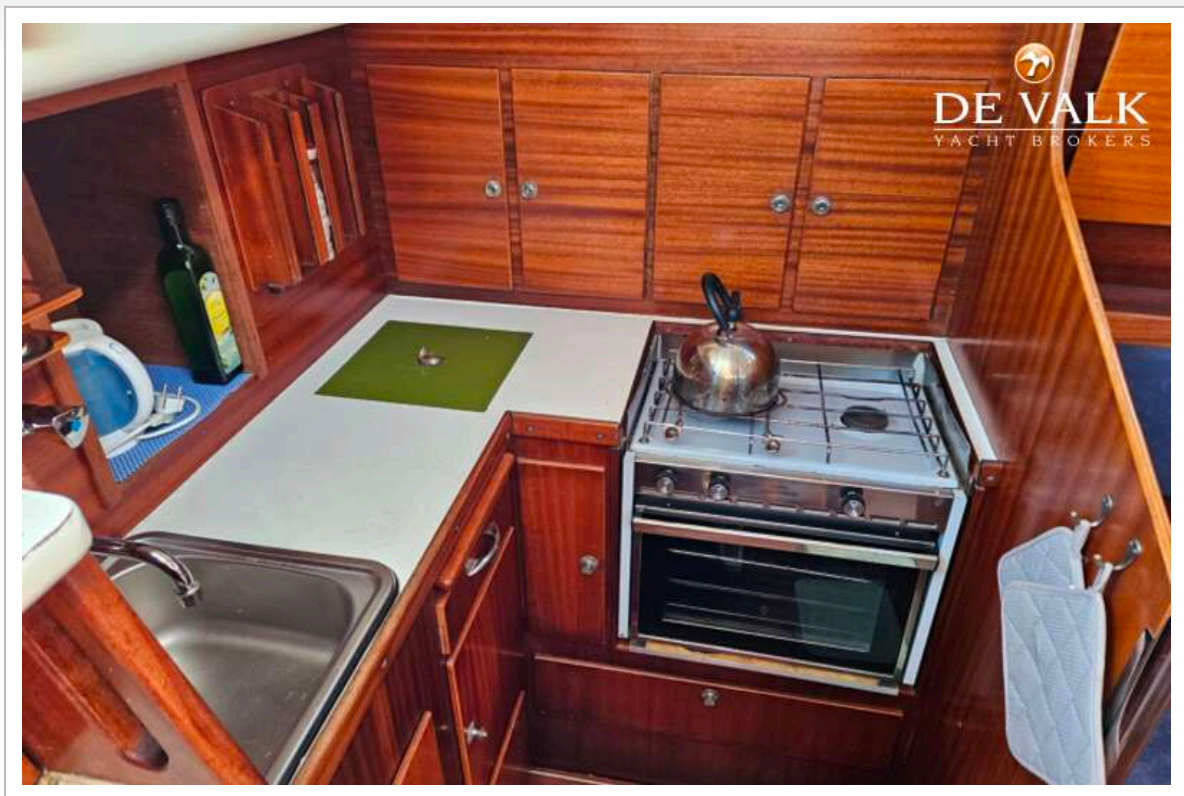


# CONTEST 36 KETCH



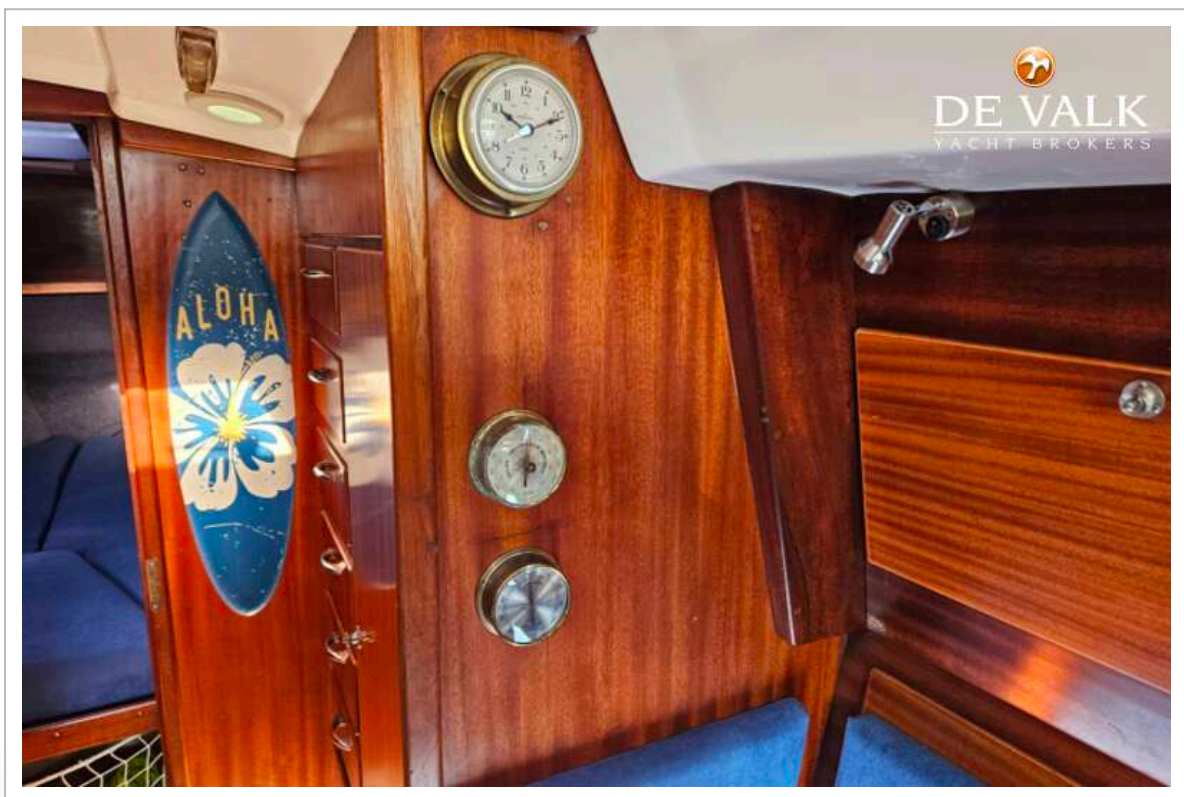
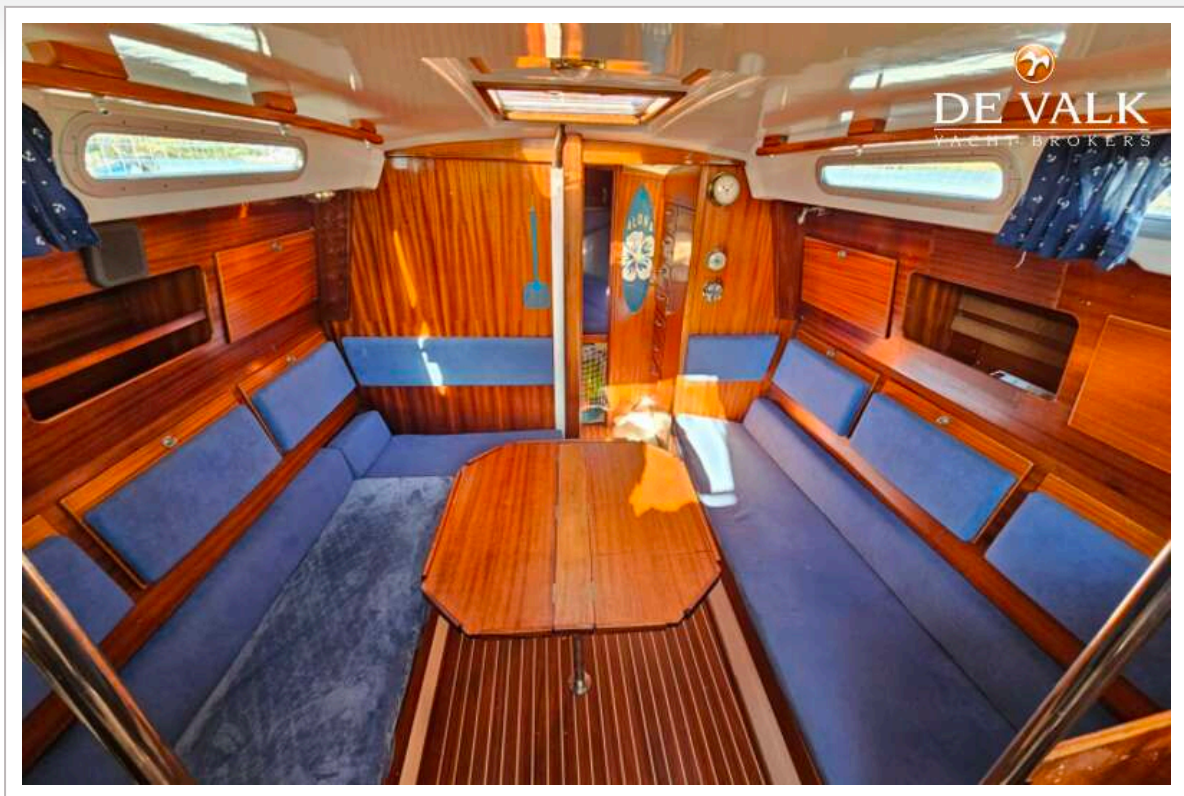


# CONTEST 36 KETCH

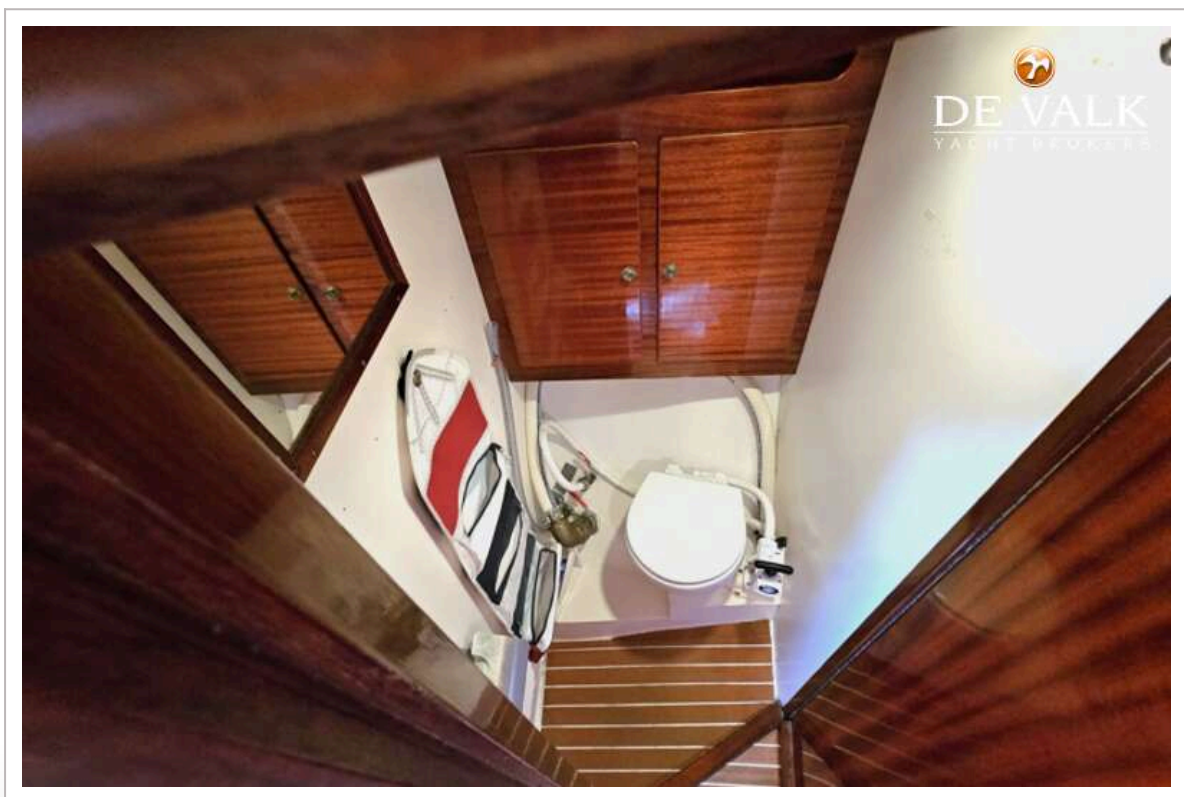




## CONTEST 36 KETCH

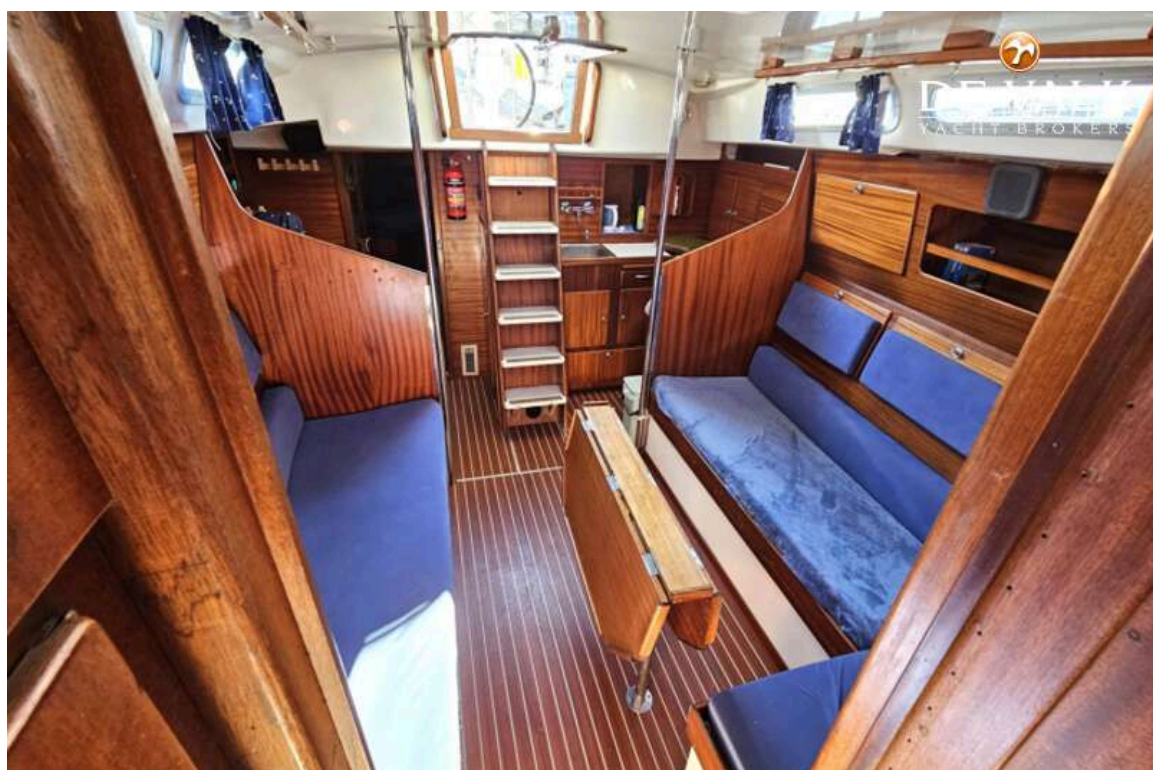


## CONTEST 36 KETCH



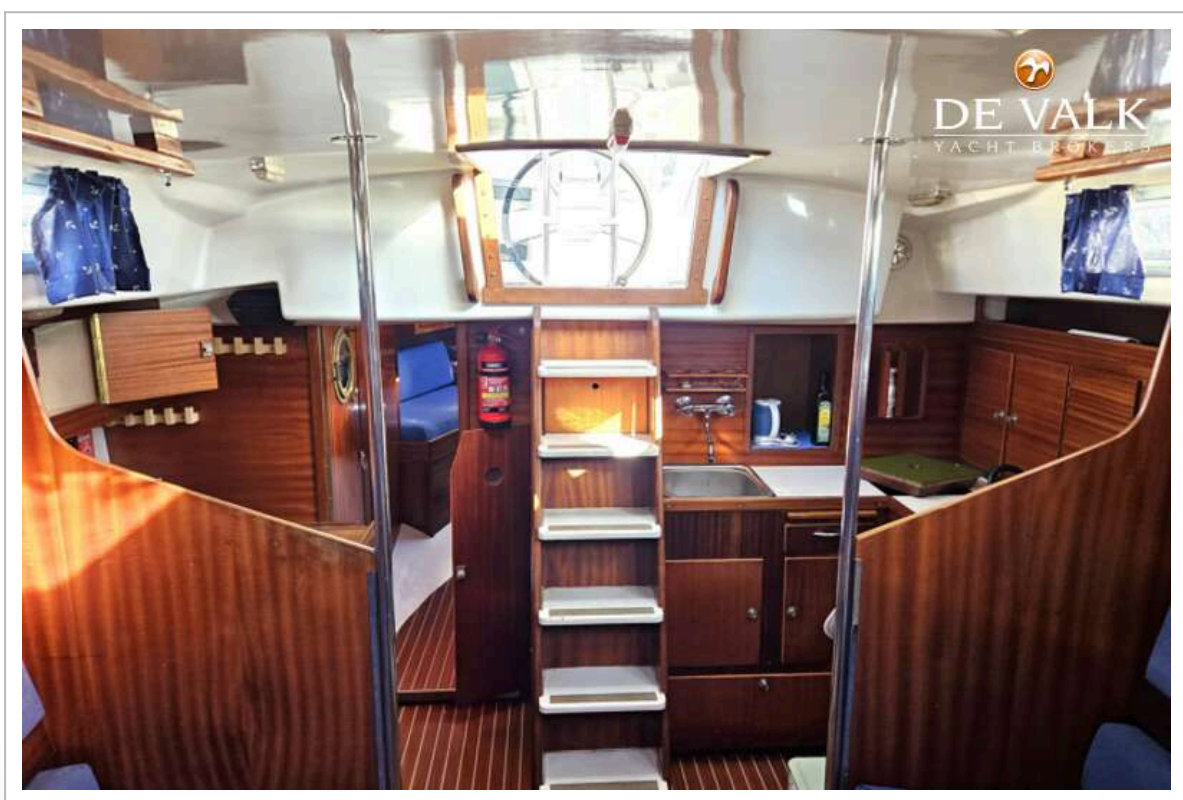


## CONTEST 36 KETCH



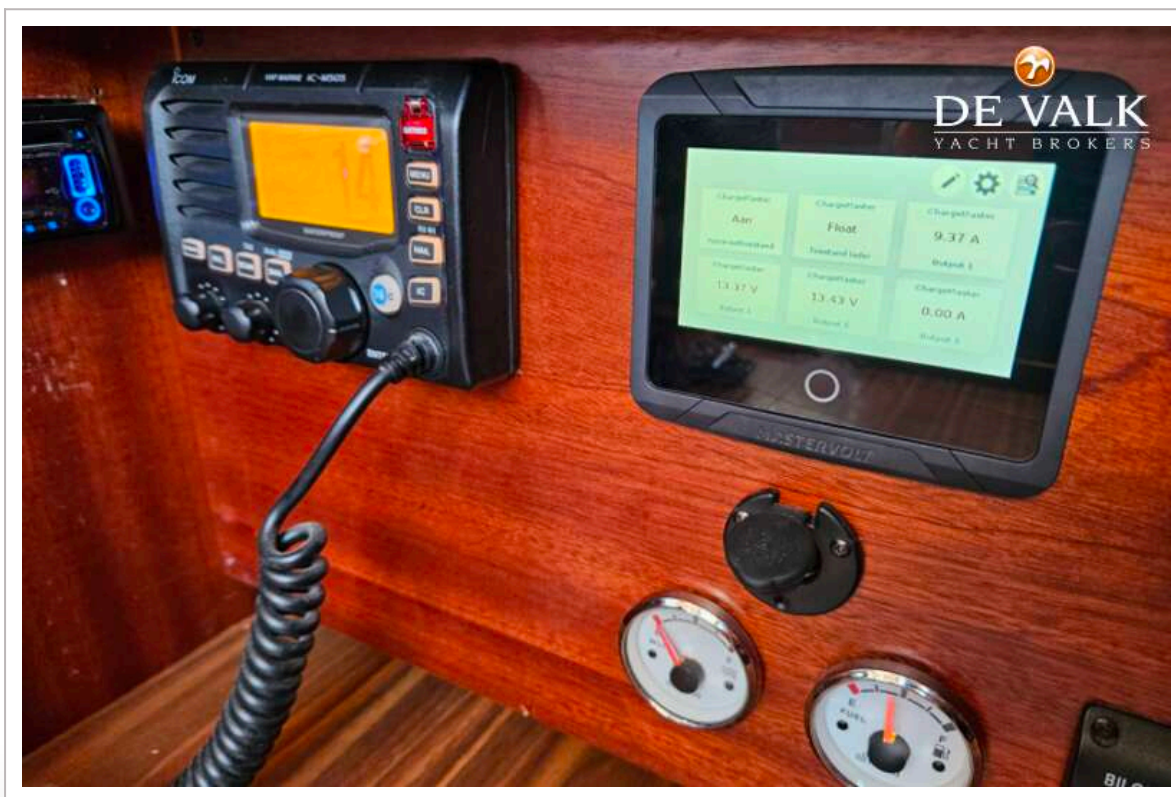


## CONTEST 36 KETCH



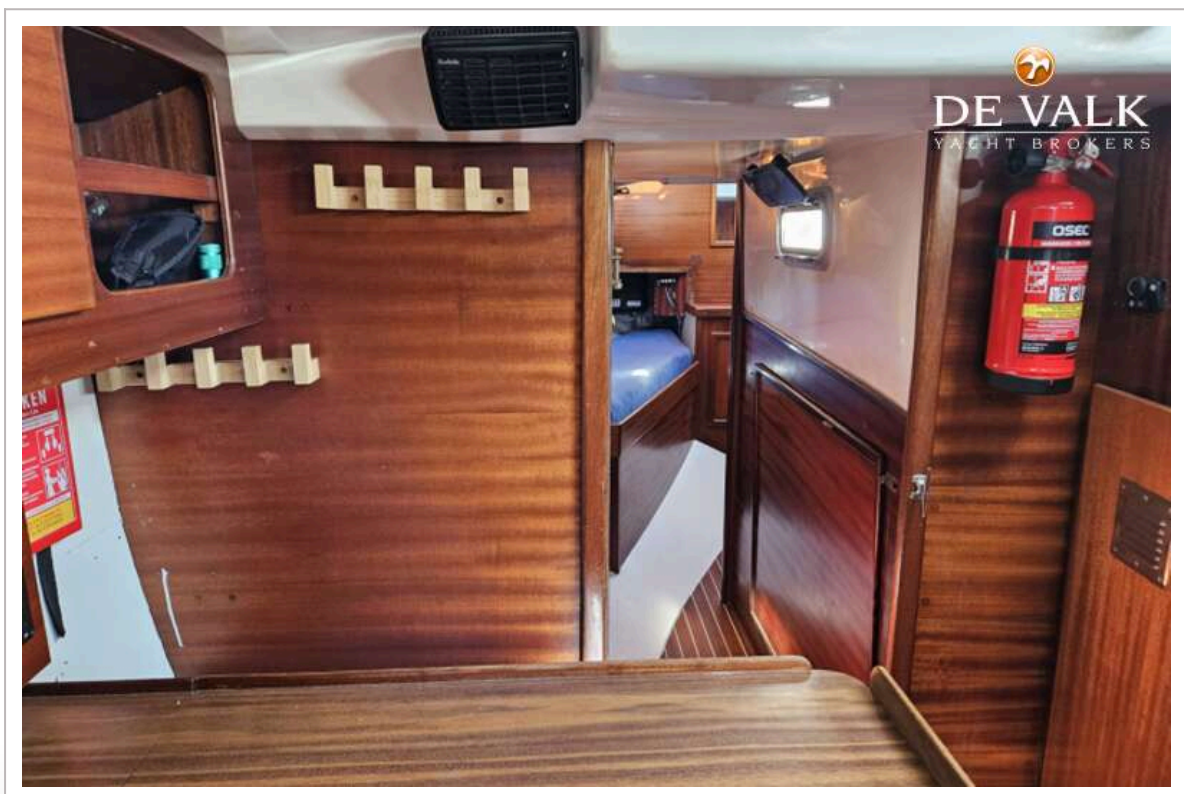


# CONTEST 36 KETCH

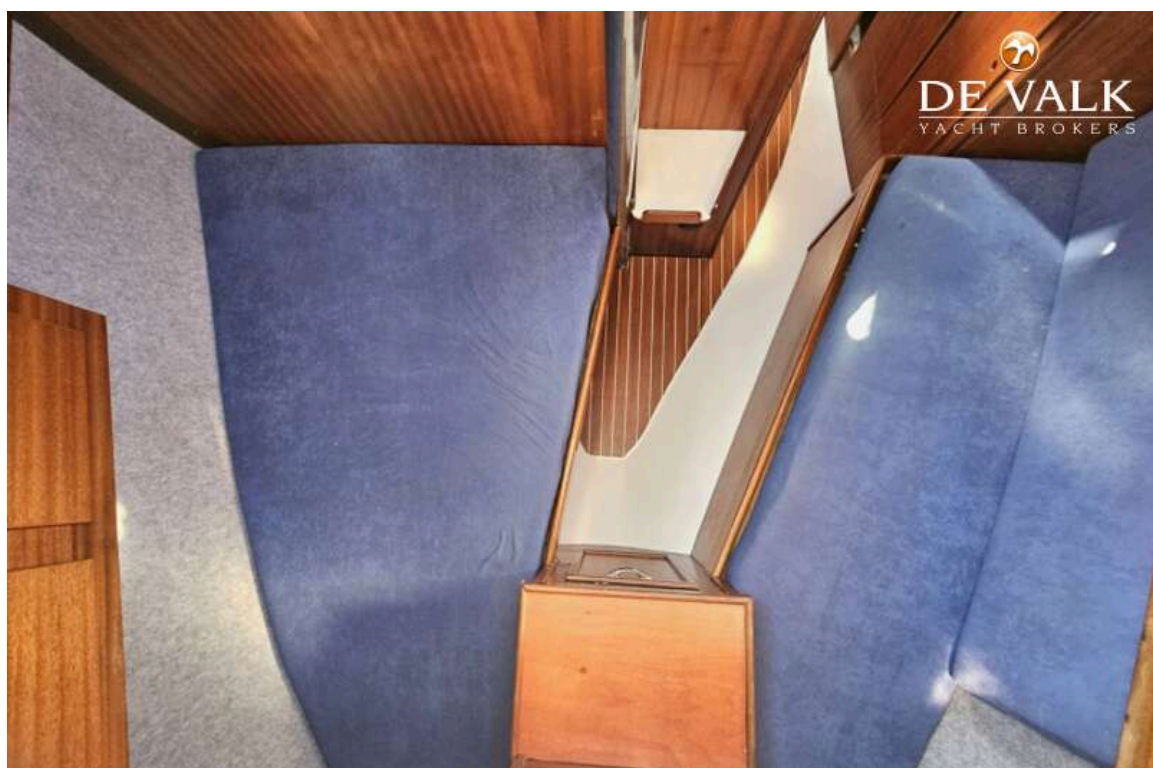




# CONTEST 36 KETCH

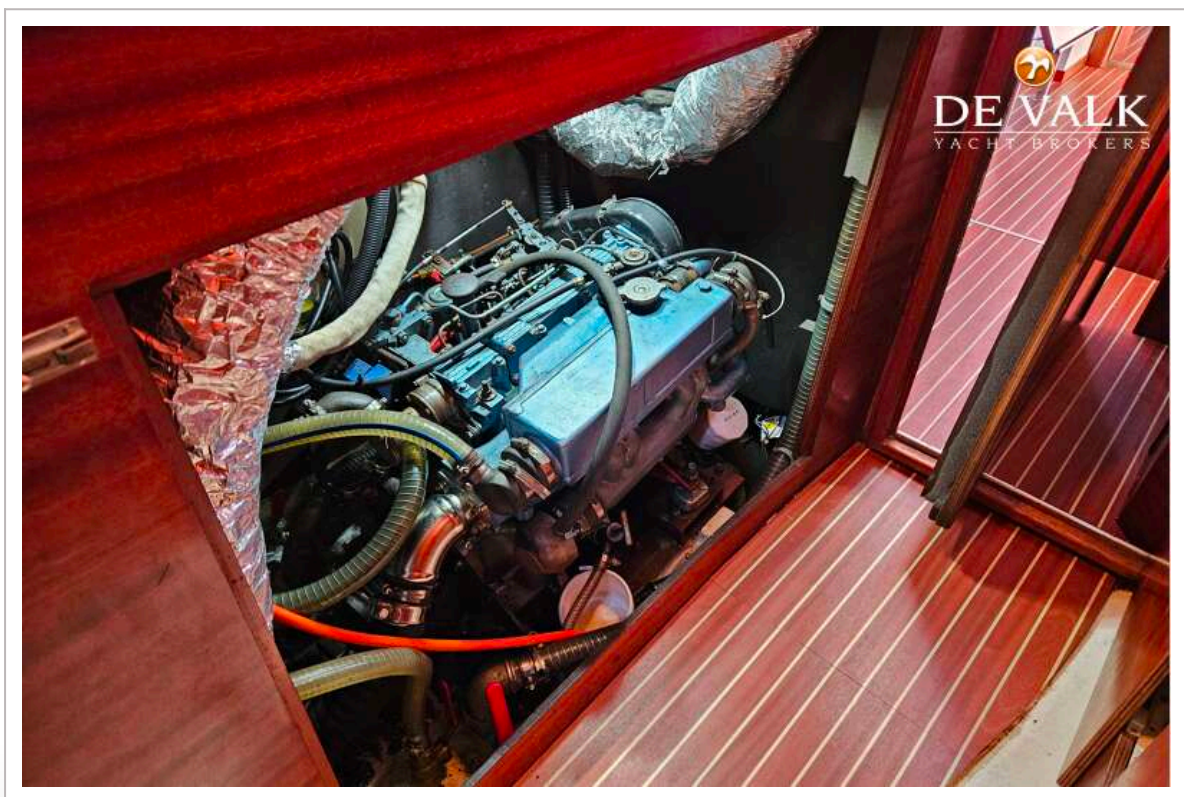
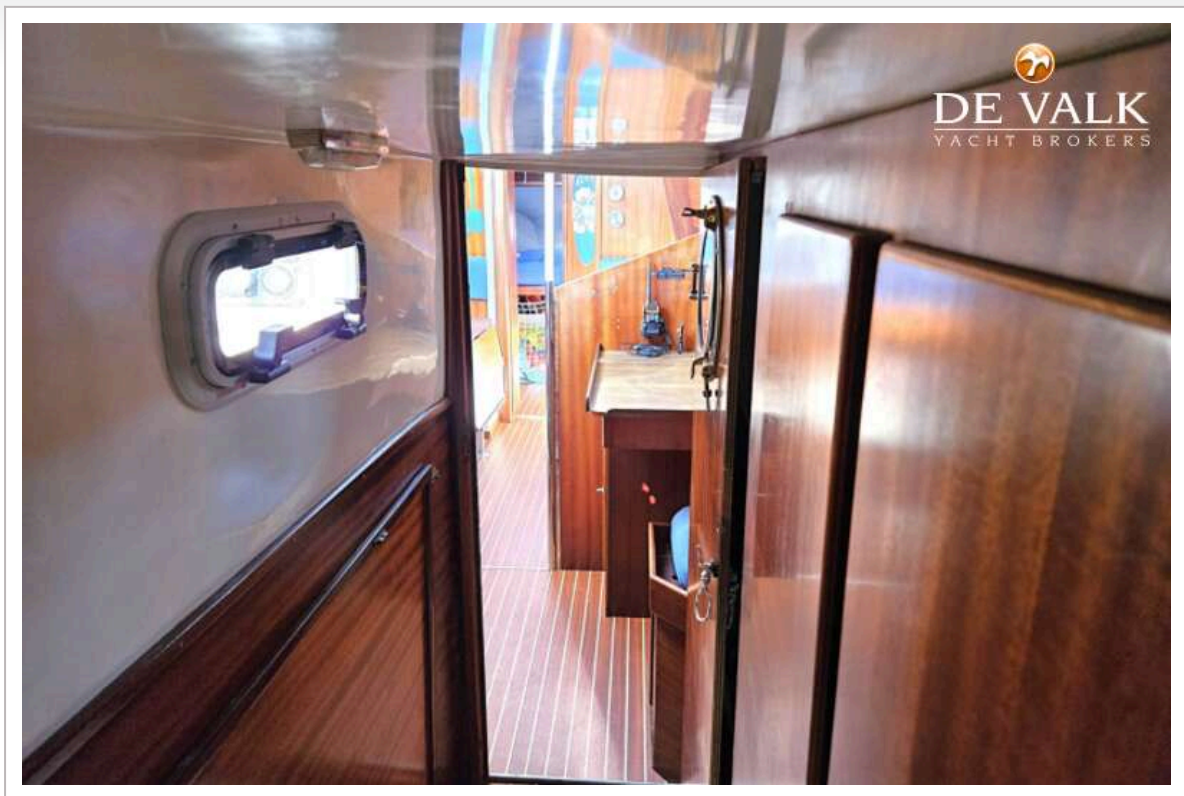


## CONTEST 36 KETCH



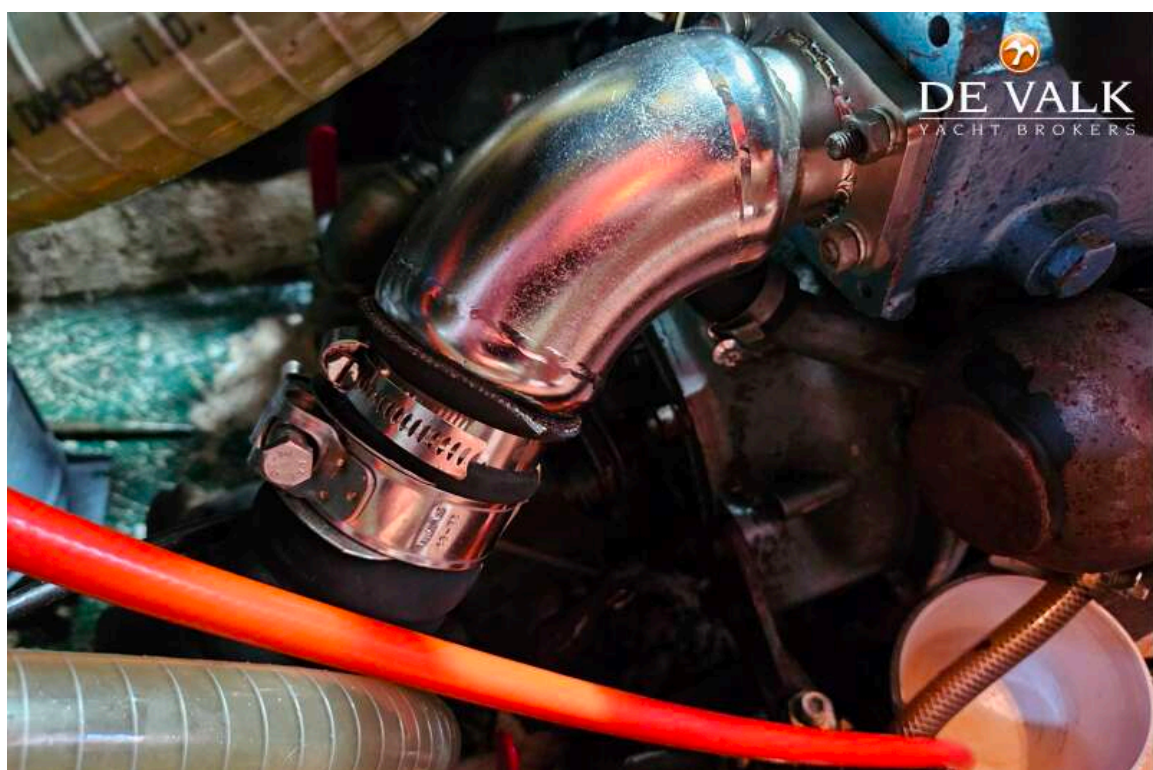


# CONTEST 36 KETCH



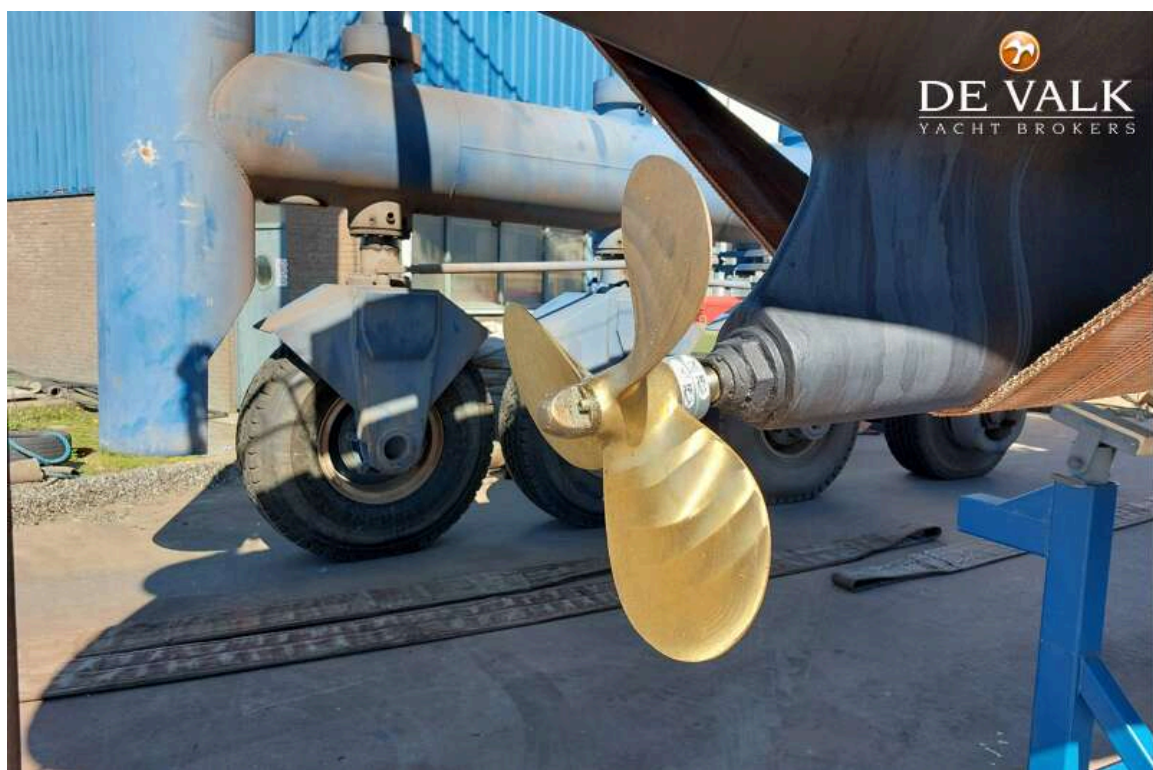


## CONTEST 36 KETCH





## CONTEST 36 KETCH



# CONTEST 36 KETCH

