



DE VALK  
YACHT BROKERS



COMBI KOTTER 1300 AK



DE VALK  
YACHT BROKERS

BROKERAGE | CHARTER | BERTHS | FINANCE | INSURANCE | YACHT MANAGEMENT

# COMBI KOTTER 1300 AK

## BROKER'S COMMENTS

Beautifully built Combi Kotter 1300. The bottom and hull have been repainted in summer 2024. This Combi Kotter 1300 is the perfect yacht for longer stays or even living on board, because of her practical layout, teak interior with Hurricane II central heating, double glazing and amenities. The draft of only 1.25 m allows sailing on almost every river and canal. The minimum airdraft of 3.50m makes her France proof. She is easy to sail thanks to the reliable 100 hp powerful volkswagen diesel. Come and visit her in our covered sales marina!

*Bas Lohmann*

## SPECIFICATIONS

<b>Dimensions</b>	13.00 x 4.20 x 1.25 (m)	<b>Builder</b>	Jachtwerf de Combinatie
<b>Built</b>	2006	<b>Cabins</b>	2
<b>Material</b>	Steel	<b>Berths</b>	4
<b>Engine(s)</b>	1 x Volkswagen Marine TD 100-5 diesel	<b>Hp/Kw</b>	100.00 (hp), 73.60 (kw)
<b>Asking price</b>	sold (VAT )	<b>Lying</b>	at sales office

## CONTACT

<b>Sales office</b>	De Valk Loosdrecht B.V.	<b>Telephone</b>	+31 (0)35 582 90 30
<b>Address</b>	't Breukeleveense Meentje 6 1231LM Loosdrecht / Wijdmeren NL	<b>E-mail</b>	loosdrecht@devalk.nl

## DISCLAIMER

These particulars are given in good faith as supplied but cannot be guaranteed.



## GENERAL

Model	COMBI KOTTER 1300 AK
Type	motor yacht
LOA (m)	13,00
Beam (m)	4,20
Draft (m)	1,25
Air draft (m)	6,00
Air draft min (m)	3,50
Headroom (m)	2,05
Year built	2006
Builder	Jachtwerf de Combinatie
Country	The Netherlands
Displacement (t)	15
CE norm	C
Hull material	steel
Hull colour	blue
Hull thickness (mm)	5
Hull shape	hard chine
Superstructure material	steel
Superstructure (mm)	4
Deck plate thickness (mm)	4
Rubbing strake	steel
Deck material	steel
Deck finish	non-skid paint
Superstructure deck finish	non-skid paint
Cockpit deck finish	non-skid paint
Antifouling (year)	2024
Window frame	aluminium Gebo
Window material	double glazing
Deckhatch	Gebo
Portholes	aluminium Gebo



# COMBI KOTTER 1300 AK

Insulation	rockwool
Mast can be lowered	manual
Fuel tank (litre)	steel 675
Level indicator (fuel tank)	yes
Freshwater tank (litre)	800
Level indicator (freshwater)	yes
Blackwater tank (litre)	polyethylene 450
Blackwater tank extraction	deck extraction + pump
Wheel steering	hydraulic
Outside helm position	hydraulic
Emergency tiller	yes
More info on paintwork	hull repainted in 2024

## ACCOMMODATION

Cabins	2
Berths	4
Interior	teak
Floor	carpet 2024
Aft deck	yes
Deck saloon	yes
Saloon	yes
Heating	central heating Hurricane II
Aft Cabin	yes
Opening door to aft deck	yes
Galley	yes
Countertop	wood
Sink	stainless steel
Cooker	calor gas 4x
Microwave/oven combi	Panasonic
Fridge	Waeco
Hot water system	220V + engine



# COMBI KOTTER 1300 AK

Water pressure system	electrical
Owners cabin	double bed
Wardrobe	hanging and shelves
Bathroom	shared
Toilet	shared
Toilet system	electric
Wash basin	in the bathroom
Shower	shared
Guest cabin 1	double bed
Wardrobe	hanging and shelves
Toilet	en suite
Toilet system	electric
Wash basin	at the toilet
Washing machine	yes

## MACHINERY

No of engines	1
Make	Volkswagen Marine
Type	TD 100-5
HP	100
kW	73.60
Fuel	diesel
Engine hours	1809
Engine cooling system	freshwater heat exchanger
Drive	shaft
Shaft seal	yes
Engine controls	bowden cable
Gearbox	hydraulic ZF
Bowthruster	electric Side Power SPT95T
Gearbox	ZF
Exhaust	watercooled



# COMBI KOTTER 1300 AK

Thrust bearing	Pytho P140-T
Propeller type	fixed Hartog
Propeller shaft material	stainless steel 40mm
Shaft lubrication	grease
Electric bilge pump	2x Attwood 1250
Batteries	yes
Start battery	Bosch 95Ah
Service battery	3x Victron Energy Gel 220Ah
Bowthruster battery	yes
Battery monitor	Studer
Battery charger/inverter	Studer HP-Compact 2800W-110AH-12V
Shorepower	with cable
Insulation transformer	Victron Isolation Transformer 3600

## NAVIGATION

Depth sounder/log	Raymarine tridata ST60
VHF	Raymarine Ray 54E
Plotter/GPS	Raymarine C70
Navigation lights	Aquasignal LED

## EQUIPMENT

Sprayhood	yes
Cockpit cover	yes
Boarding ladder	yes
Anchor	30KG Cuno
Anchor chain	8mm-30m
Windlass	manual Loftrans
Sea railing	stainless steel
Wiper	3x ASA
Horn	electric ASA
Fenders	yes



Mooring lines

yes



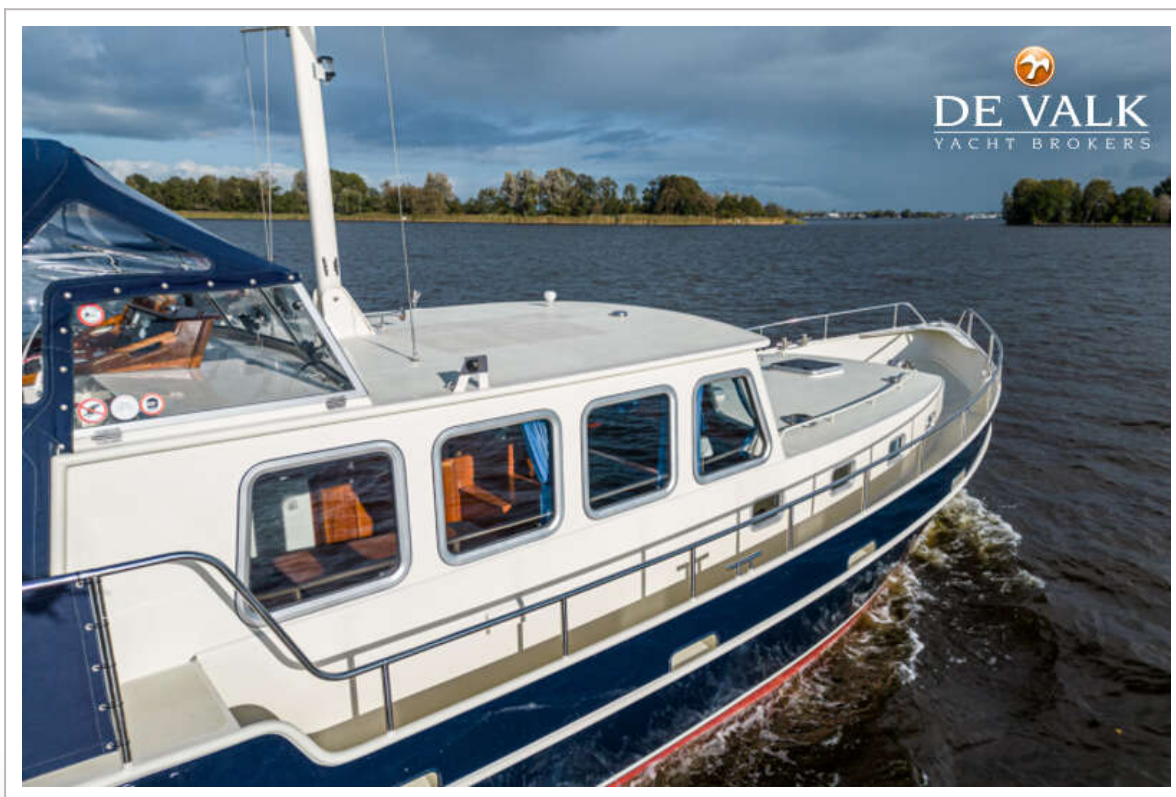


# COMBI KOTTER 1300 AK

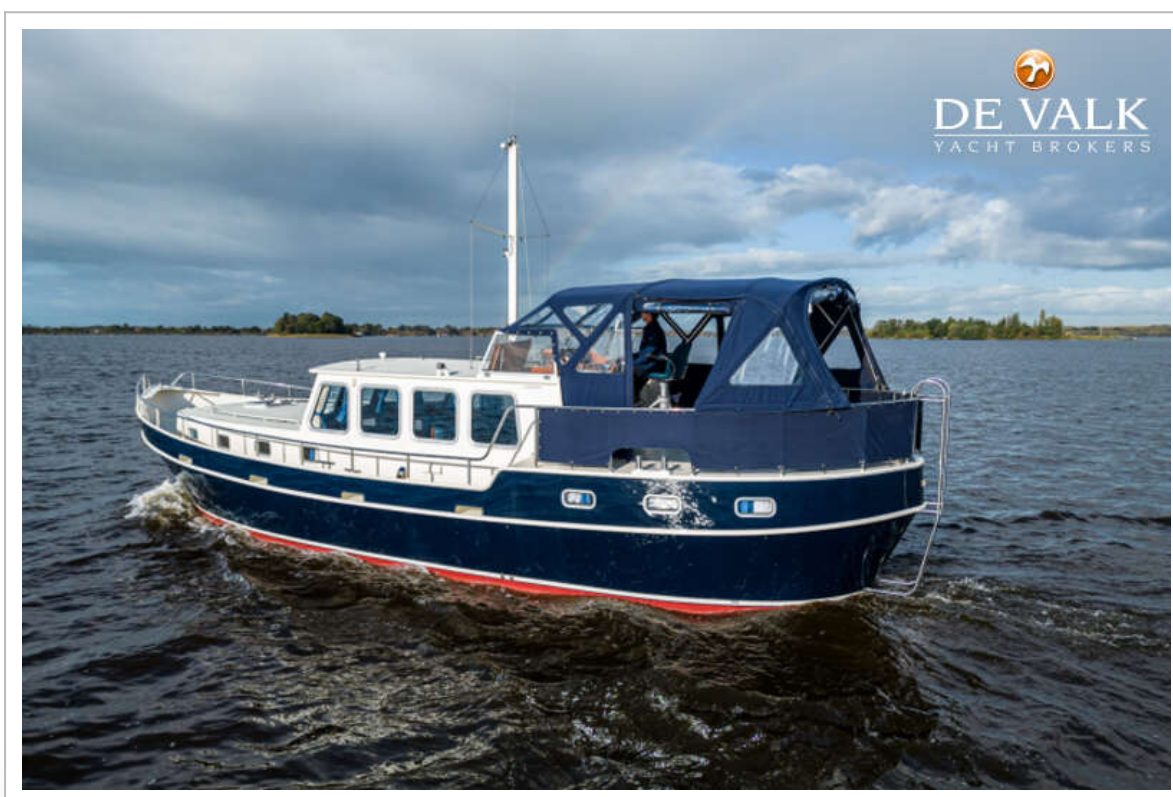




# COMBI KOTTER 1300 AK

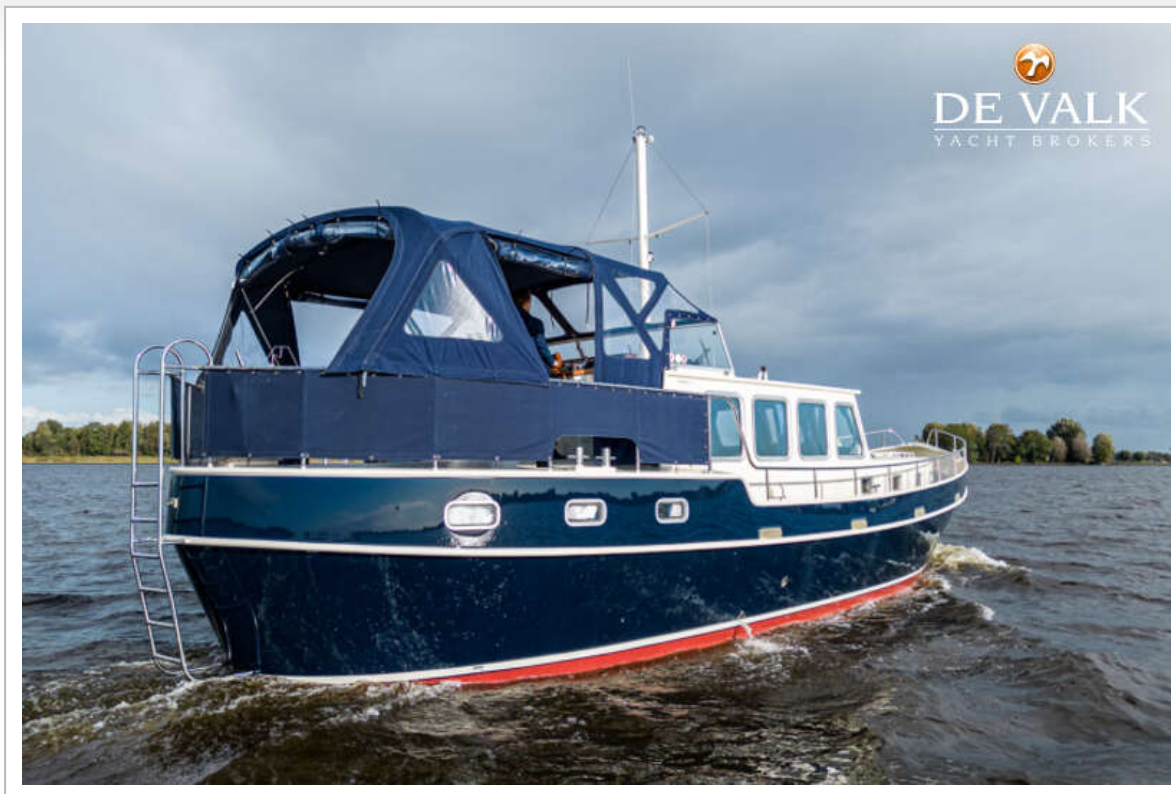


# COMBI KOTTER 1300 AK

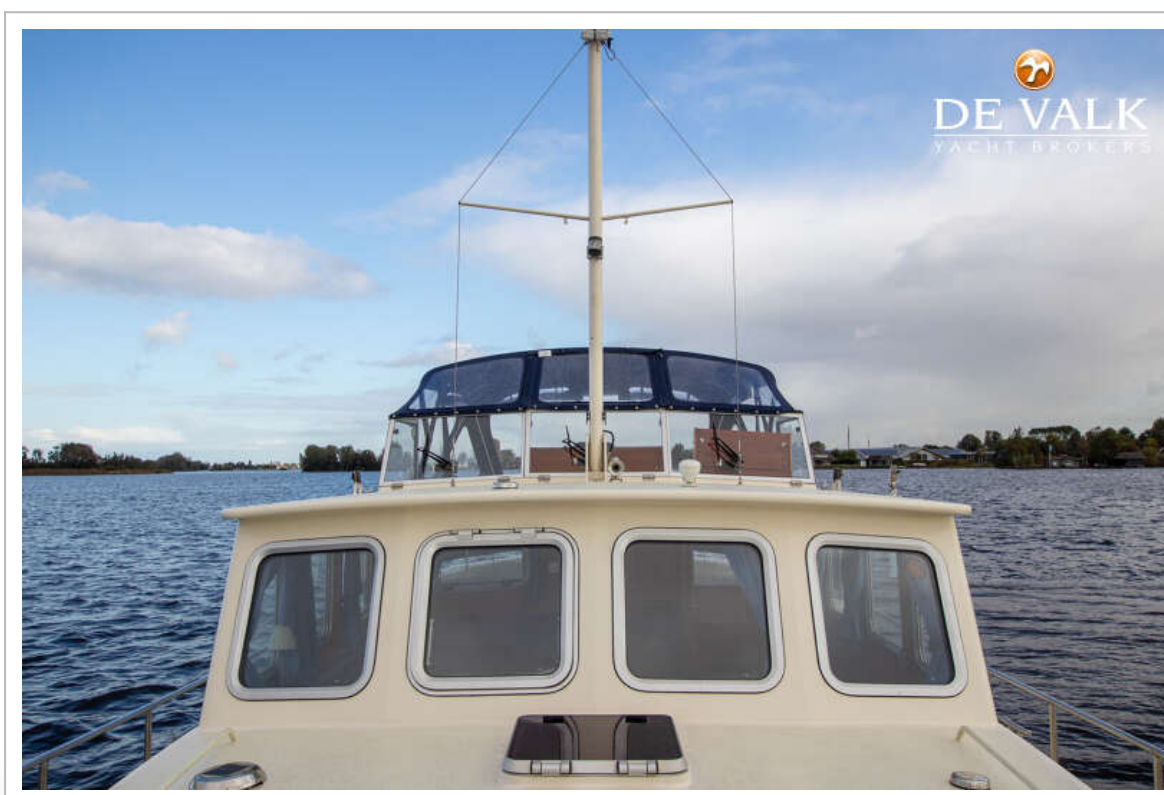




# COMBI KOTTER 1300 AK



# COMBI KOTTER 1300 AK

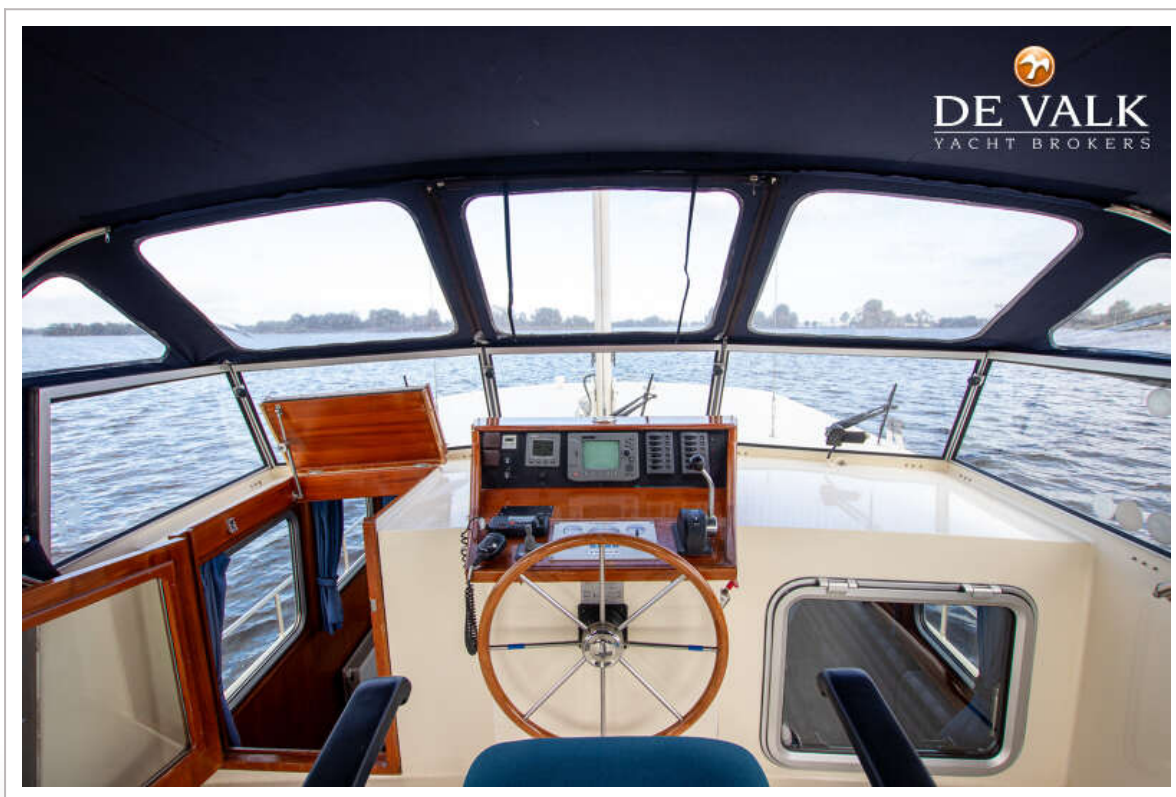
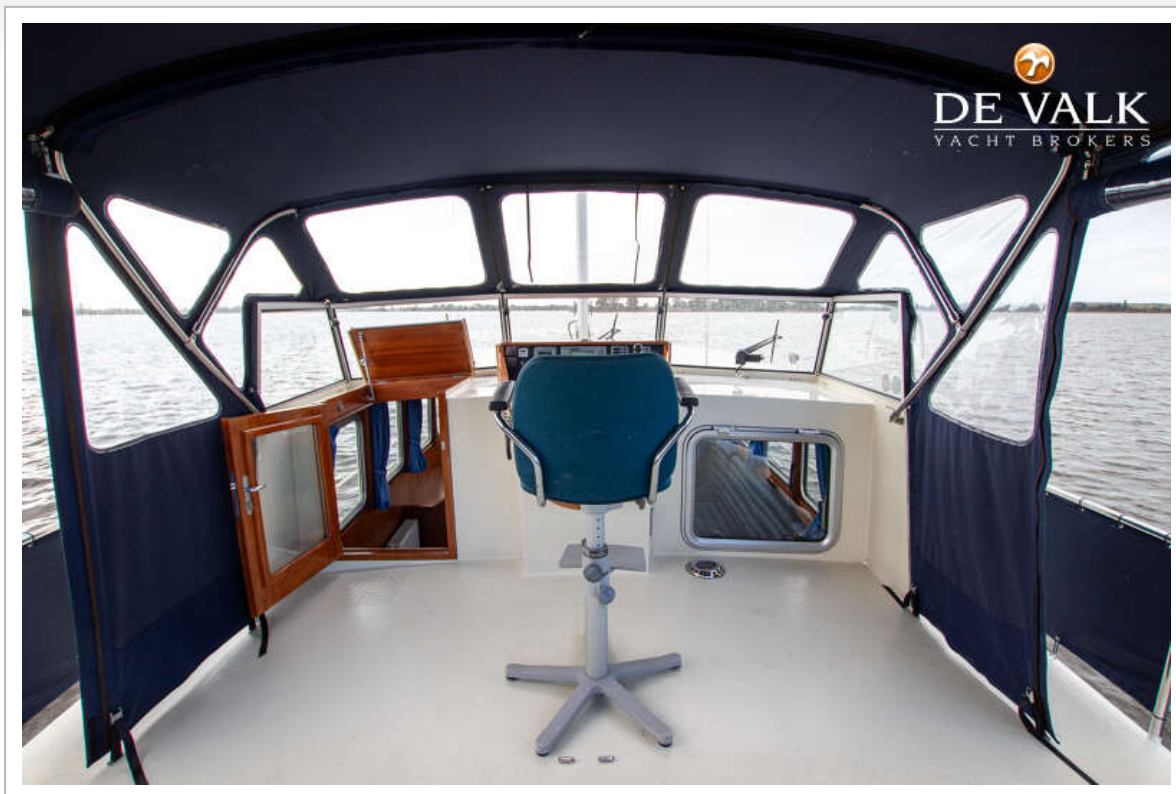




# COMBI KOTTER 1300 AK

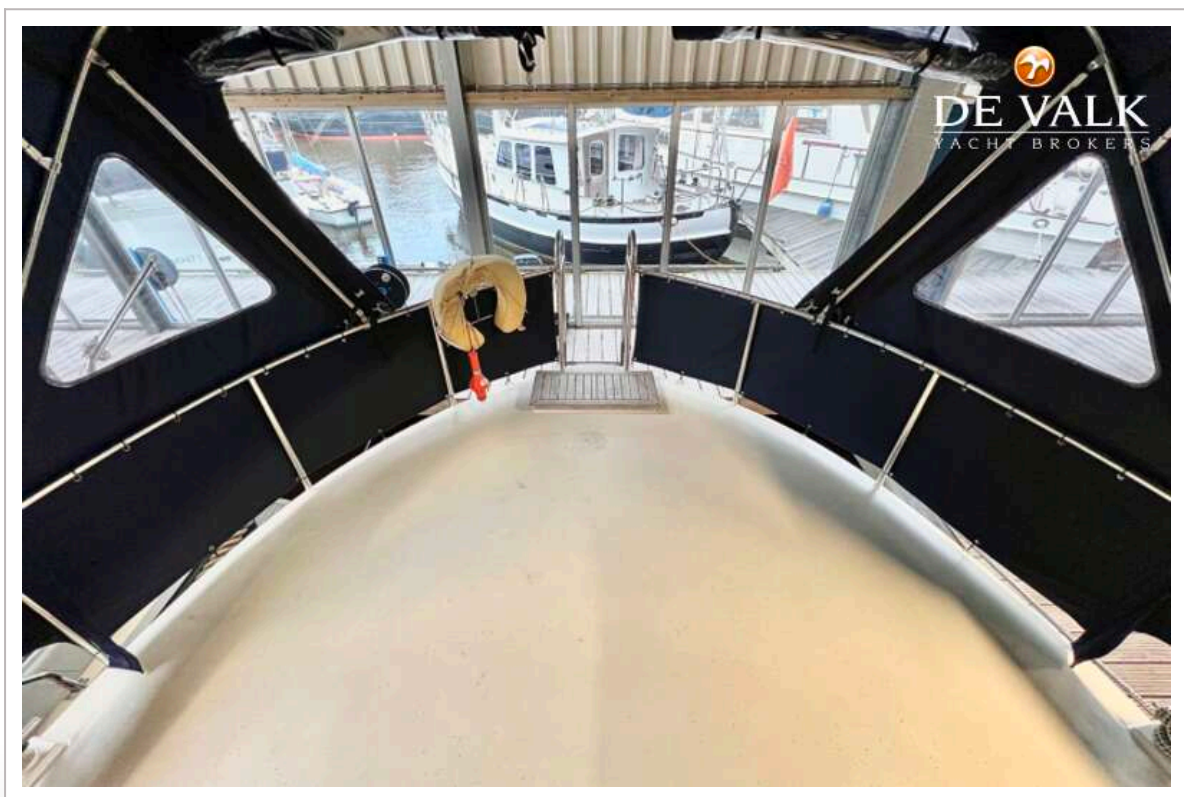
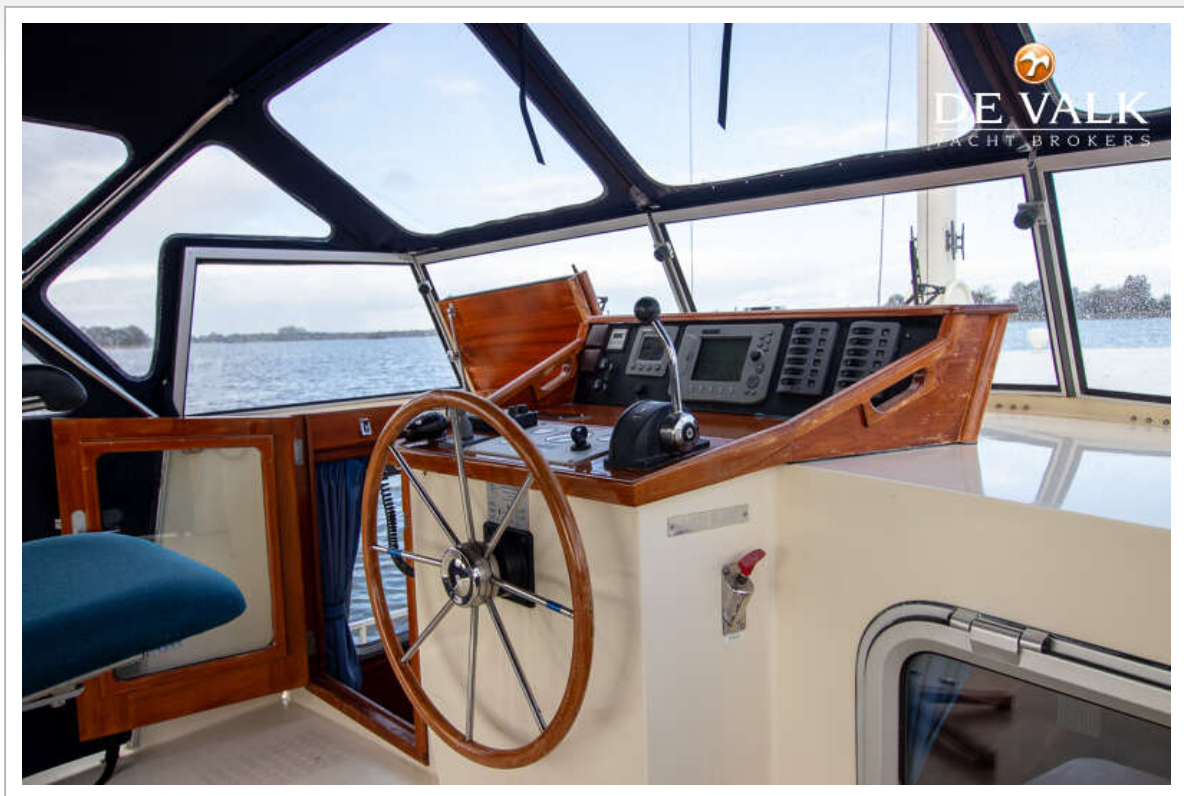


# COMBI KOTTER 1300 AK



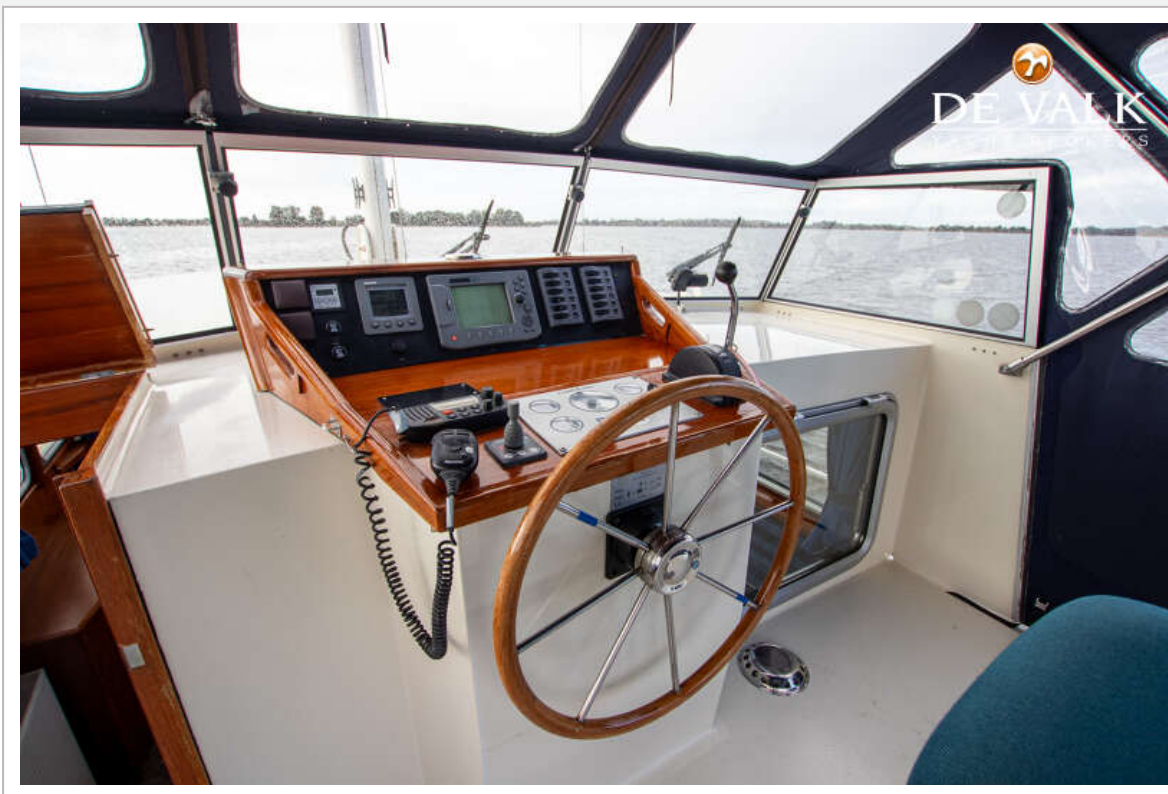


# COMBI KOTTER 1300 AK

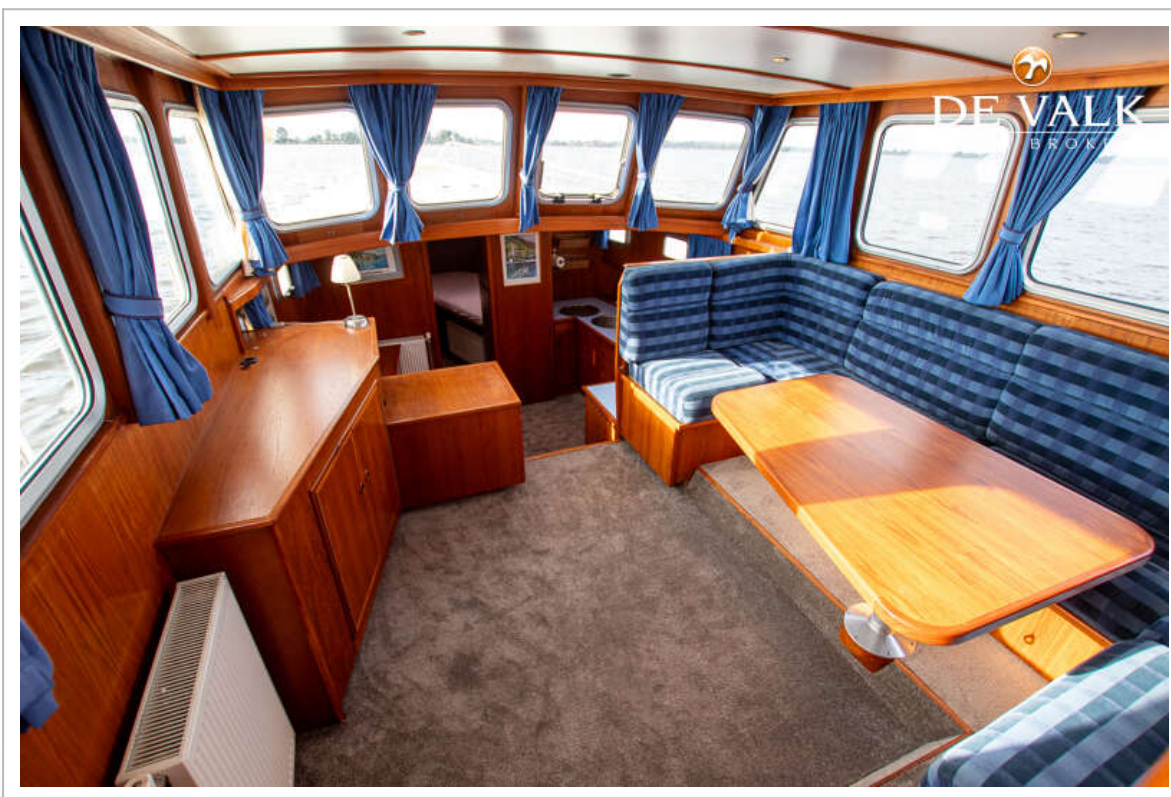
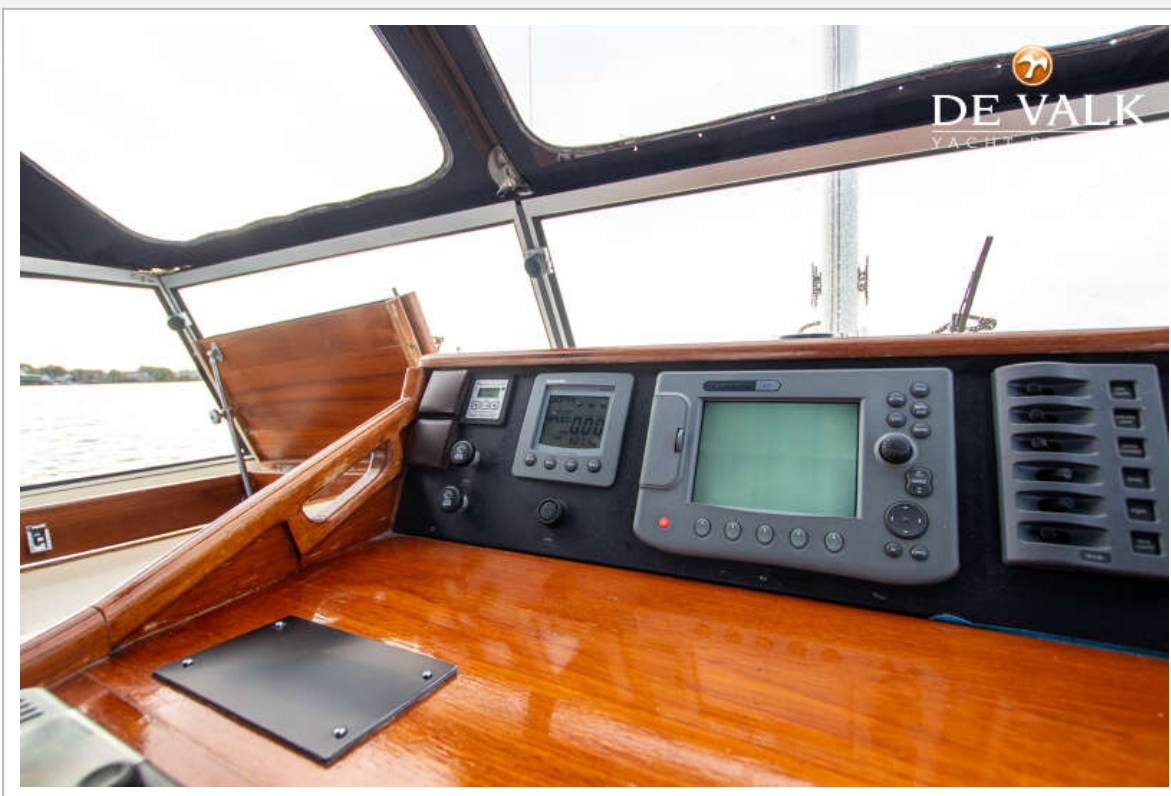




# COMBI KOTTER 1300 AK



# COMBI KOTTER 1300 AK



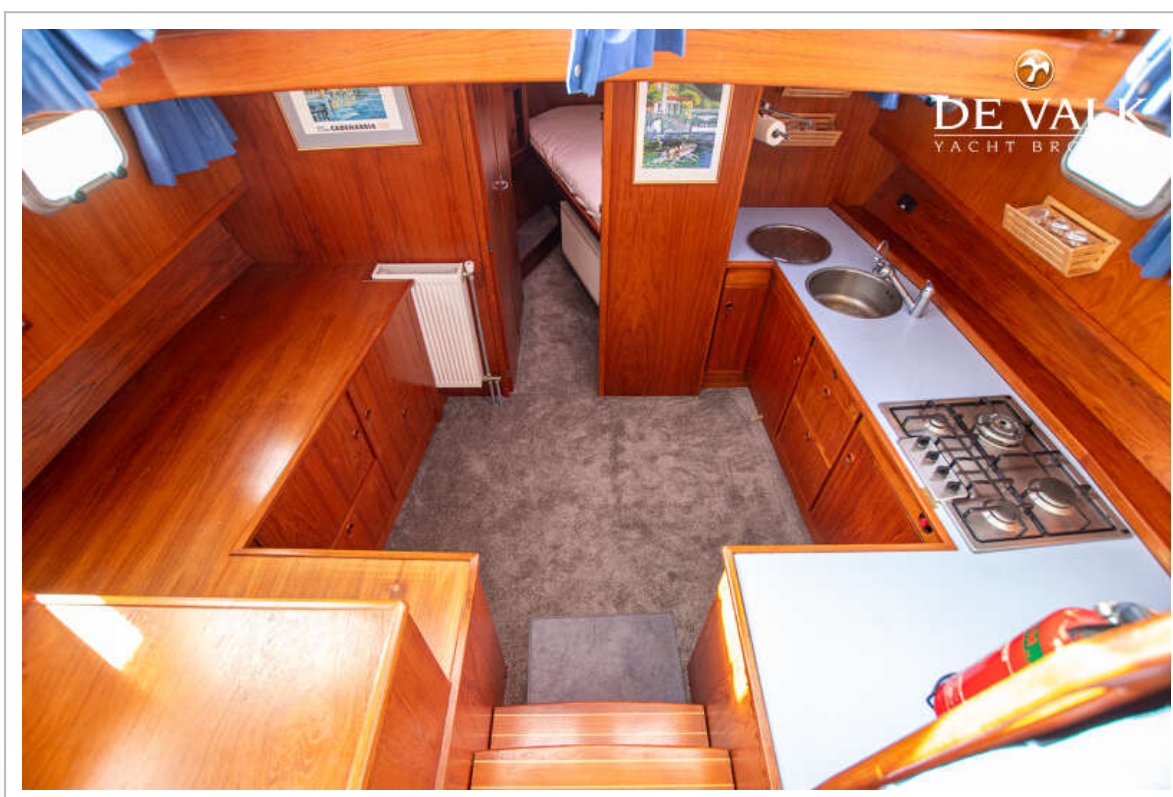
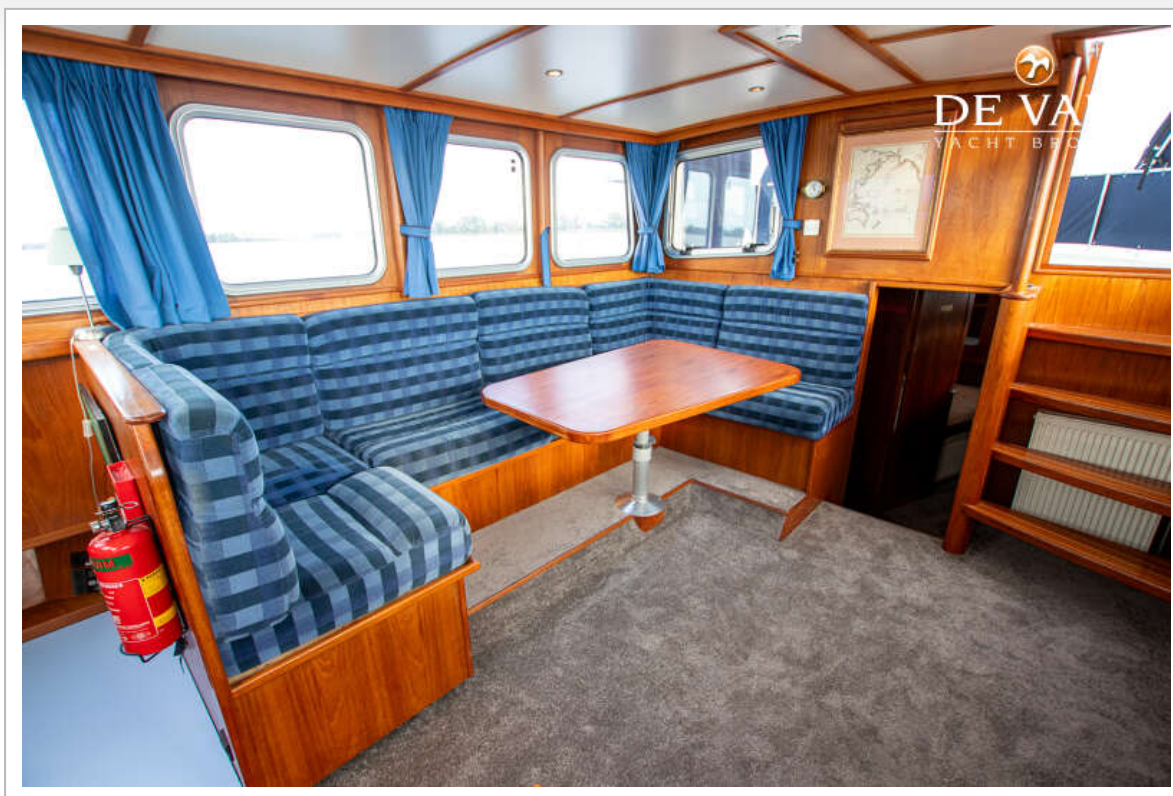


# COMBI KOTTER 1300 AK

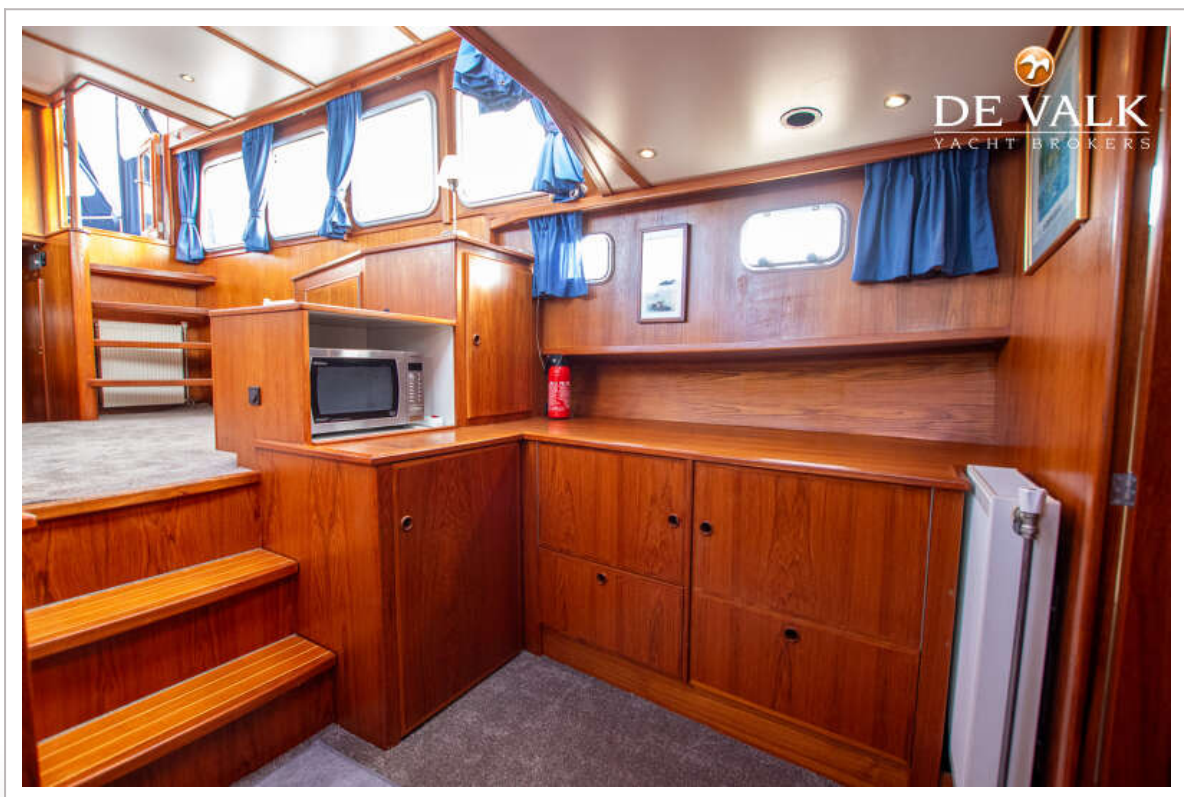




# COMBI KOTTER 1300 AK

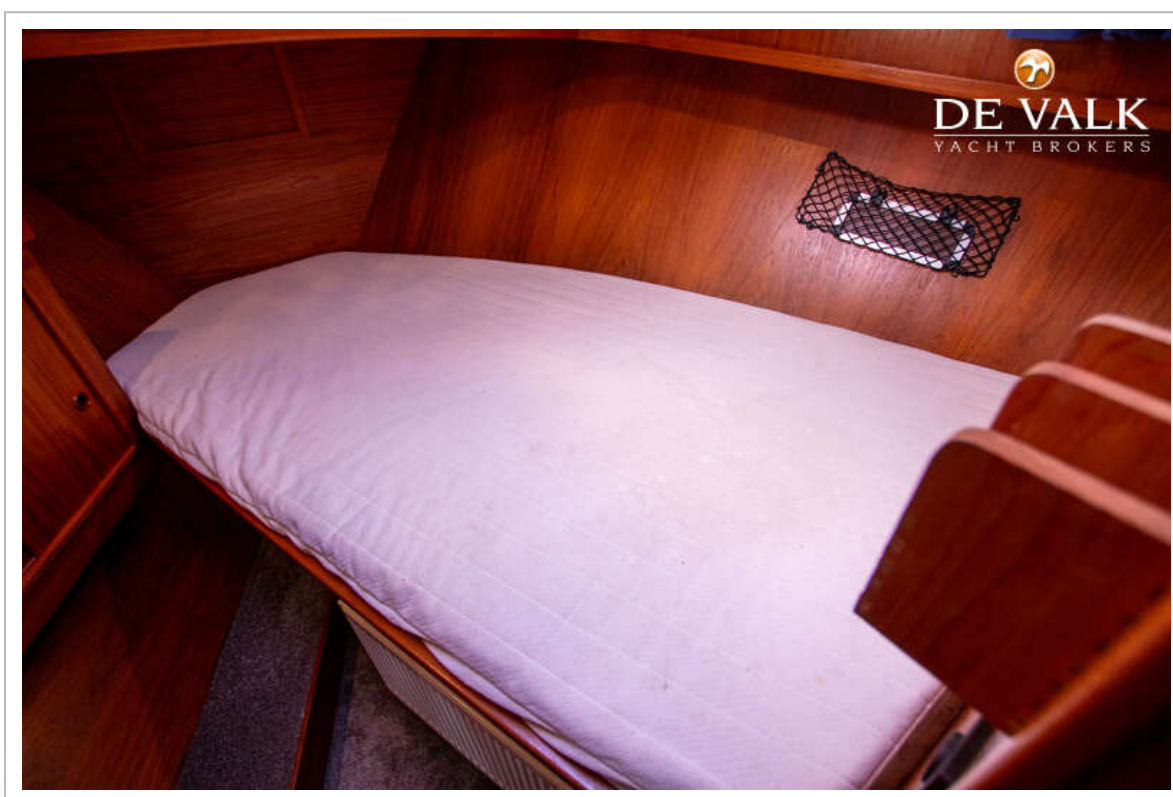
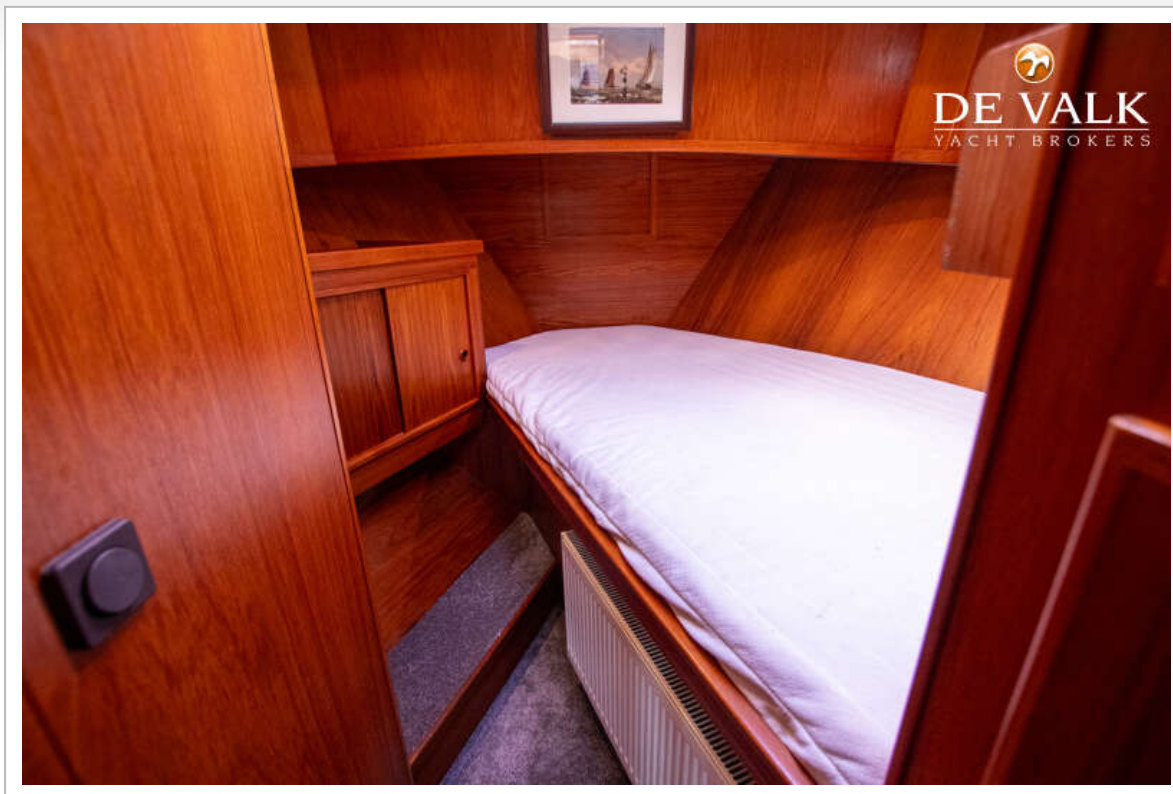


# COMBI KOTTER 1300 AK

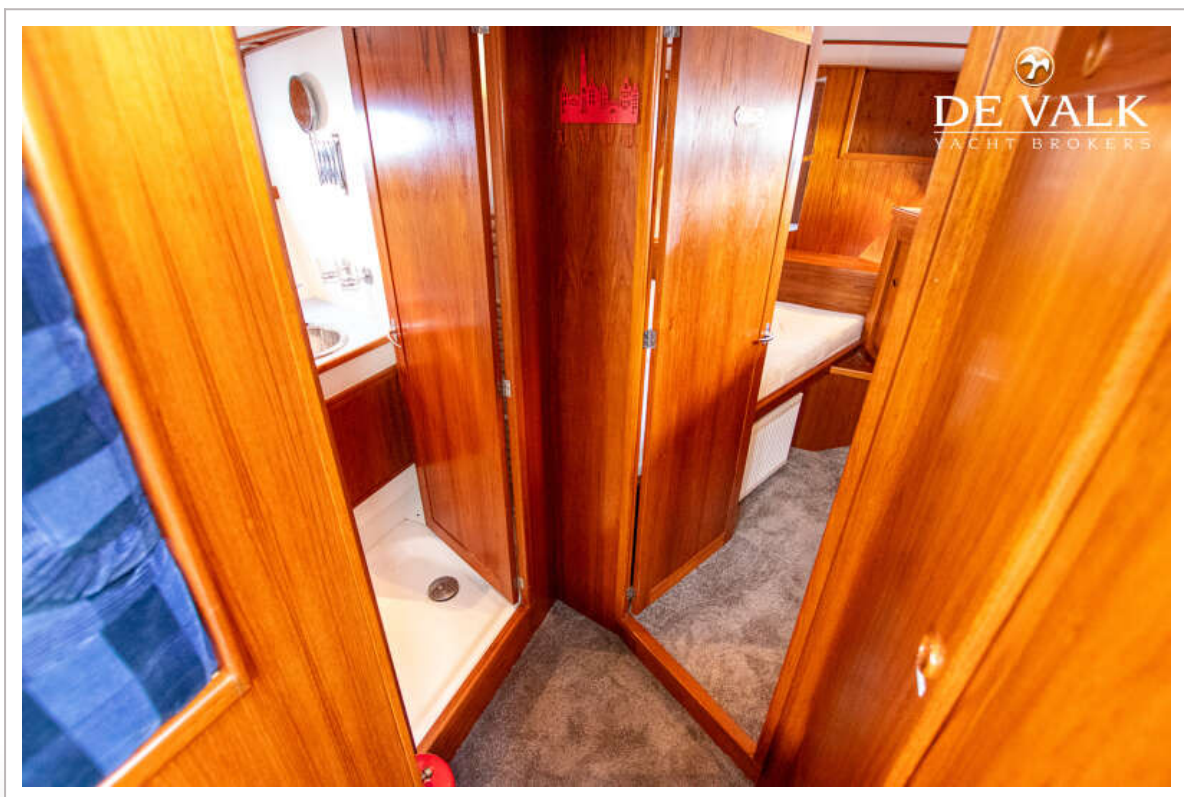
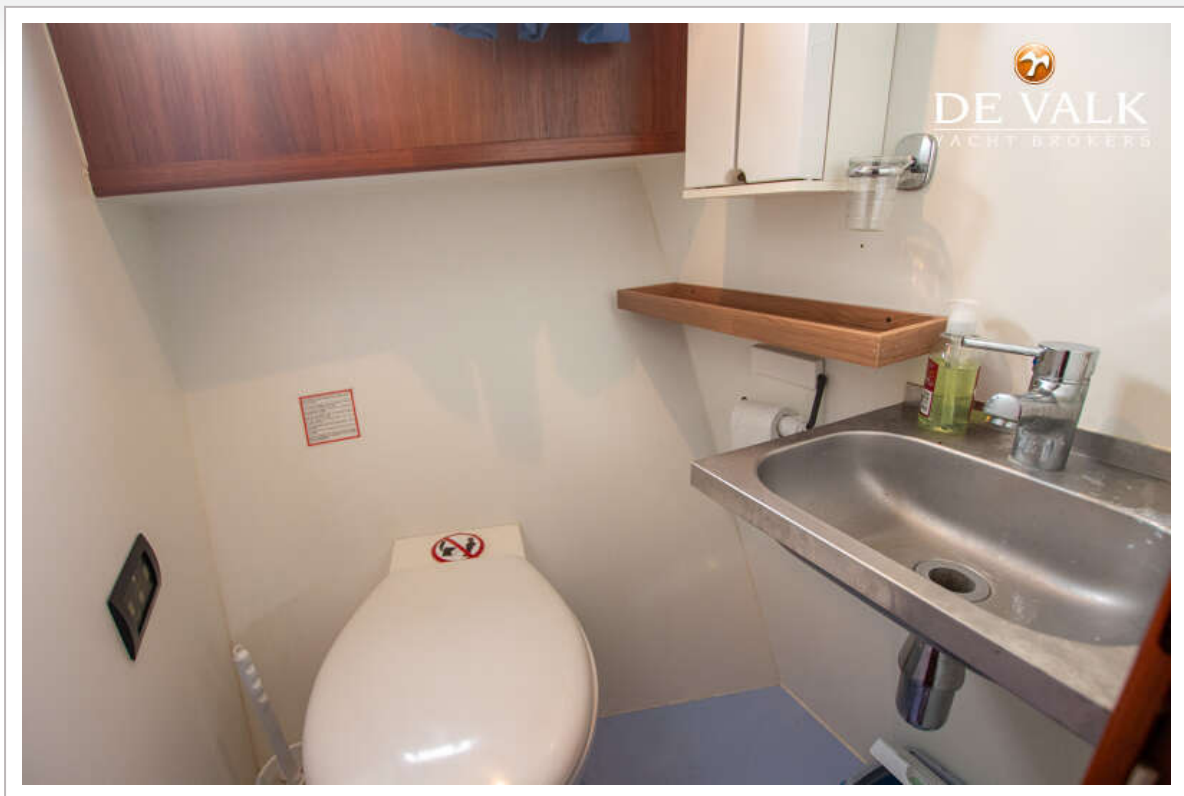




# COMBI KOTTER 1300 AK

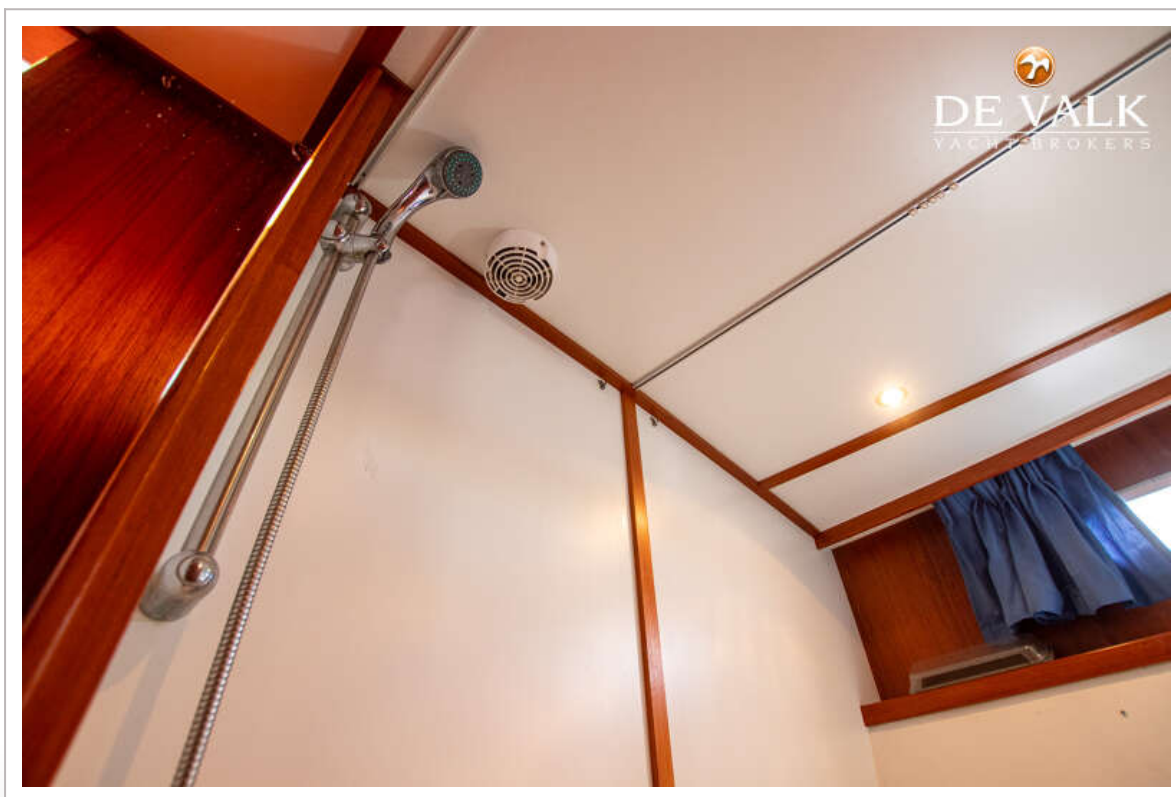
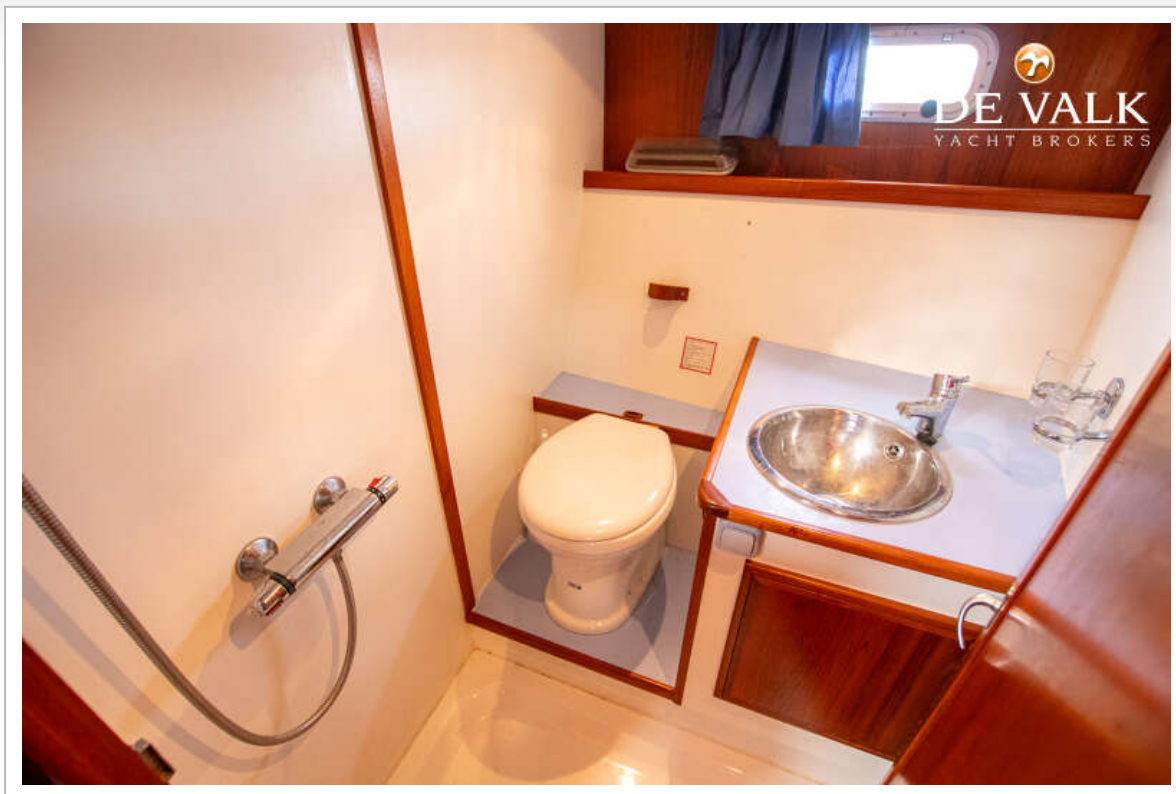


# COMBI KOTTER 1300 AK





# COMBI KOTTER 1300 AK

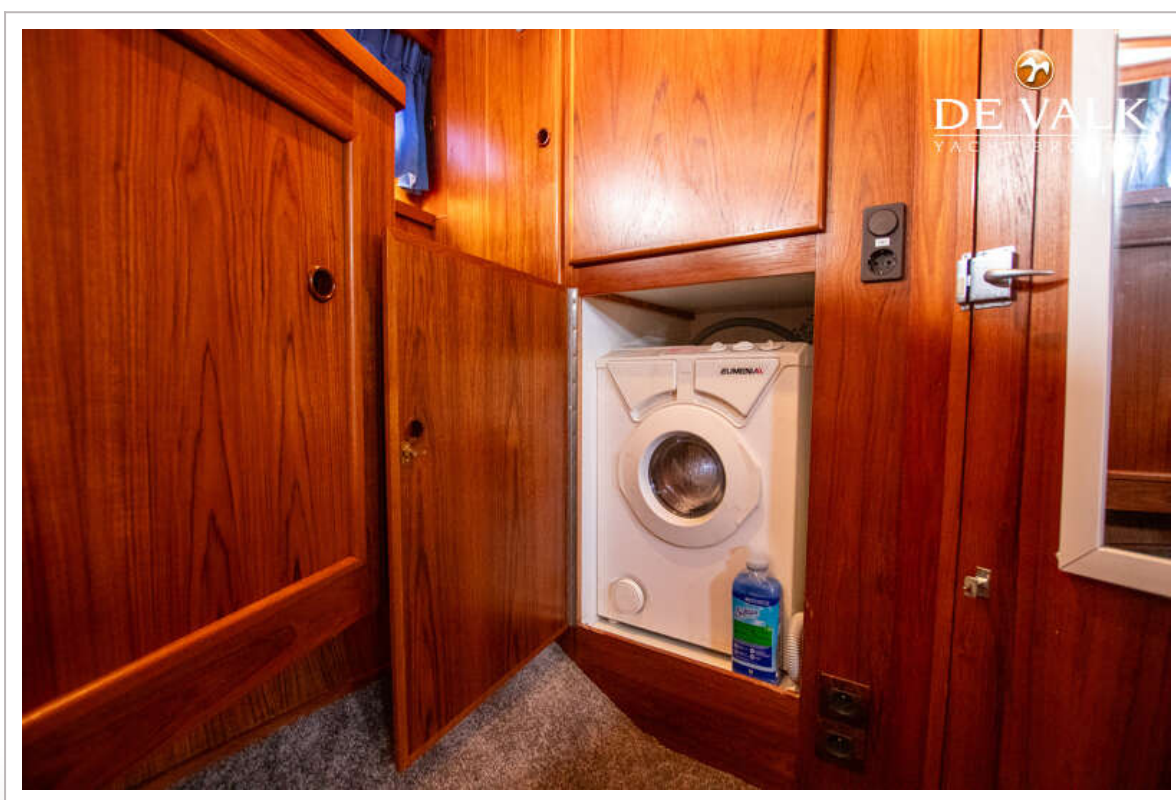
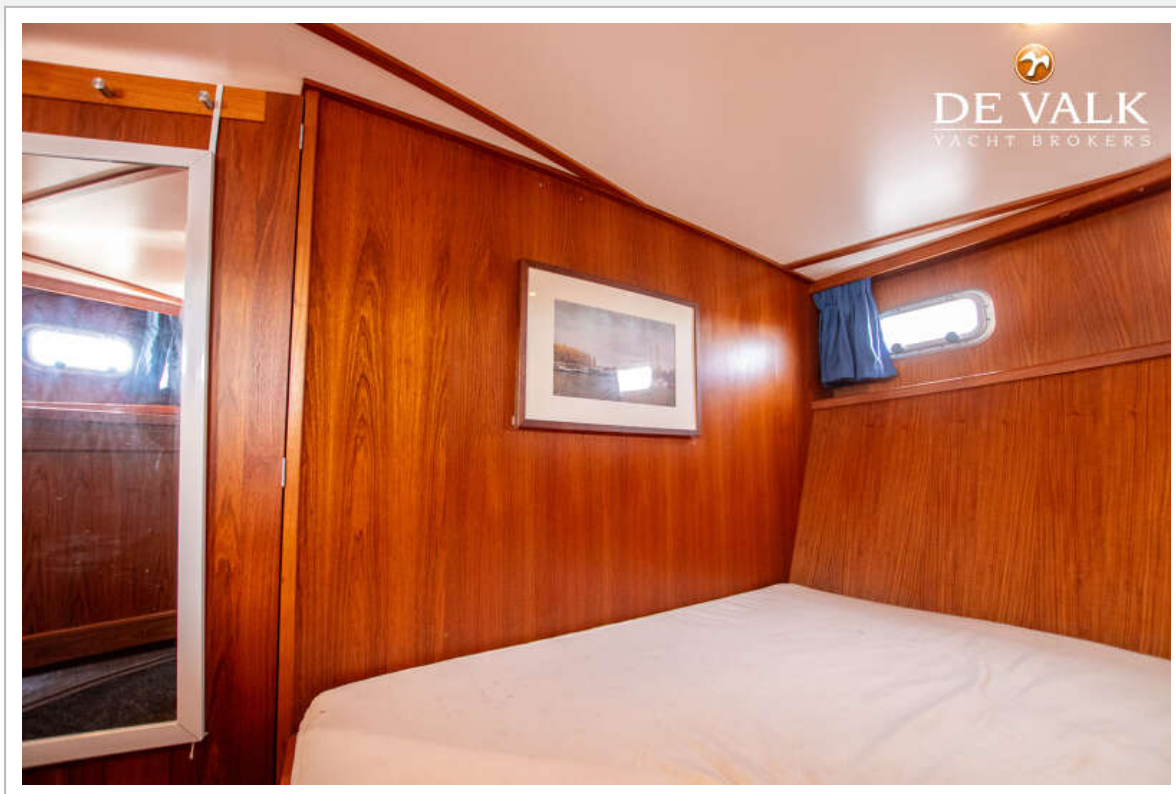


# COMBI KOTTER 1300 AK

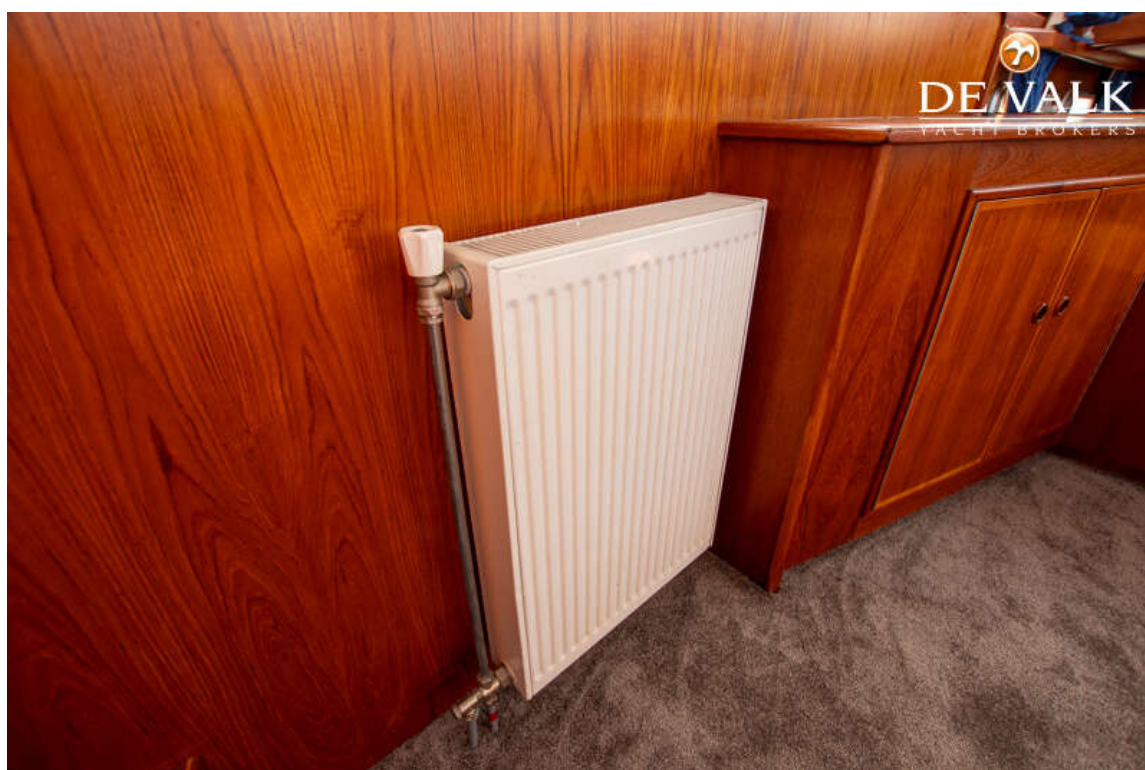




# COMBI KOTTER 1300 AK



# COMBI KOTTER 1300 AK





# COMBI KOTTER 1300 AK



# COMBI KOTTER 1300 AK





# COMBI KOTTER 1300 AK

