



DUET VLET 10.40 AK

DUET VLET 10.40 AK

BROKER'S COMMENTS

The Duetvlet 10.40 AK is a sturdy, Dutch motor yacht, known for its stability and durable construction. With a length of 10.40 meters, this yacht offers enough space and comfort for longer trips. It features a spacious saloon, a well-equipped galley, and 4 berths. Thanks to its Mitsubishi diesel engine and excellent maneuverability, the Duetvlet 10.40 AK is ideal for both inland and coastal waters. The boat is now available for viewing at the sales marina in Loosdrecht.

Bas Lohmann

SPECIFICATIONS

Dimensions	10.40 x 3.75 x 0.95 (m)	Builder	Scheepswerf de Welle in Woudsend
Built	2002	Cabins	2
Material	Steel	Berths	4
Engine(s)	1 x Mitsubishi Lister Petter diesel	Hp/Kw	66.00 (hp), 48.58 (kw)
Asking price	€ 99.000 (VAT Paid)	Lying	at sales office

CONTACT

Sales office	De Valk Loosdrecht B.V.	Telephone	+31 (0)35 582 90 30
Address	't Breukeleveense Meentje 6 1231LM Loosdrecht / Wijdmeren NL	E-mail	loosdrecht@devalk.nl

DISCLAIMER

These particulars are given in good faith as supplied but cannot be guaranteed.



GENERAL

Model	DUET VLET 10.40 AK
Type	motor yacht
LOA (m)	10,40
Beam (m)	3,75
Draft (m)	0,95
Air draft min (m)	2,40
Headroom (m)	1,95
Year built	2002
Builder	Scheepswerf de Welle in Woudsend
Country	The Netherlands
Displacement (t)	15
Ballast (tonnes)	lead
Hull material	steel
Hull colour	blue
Hull thickness (mm)	5
Hull shape	multi hard chine
Superstructure material	steel
Superstructure (mm)	4
Deck plate thickness (mm)	4
Rubbing strake	fender rope New 2023
Deck material	steel
Deck finish	non-skid paint
Superstructure deck finish	paint
Cockpit deck finish	non-skid paint
Antifouling (year)	2021
Window frame	aluminium
Window material	glass
Deckhatch	yes
Portholes	aluminium
Fuel tank (litre)	steel 2x 250



Level indicator (fuel tank)	yes
Freshwater tank (litre)	stainless steel 2x 450
Blackwater tank (litre)	stainless steel 1x 250
Level indicator (blackwater)	yes
Blackwater tank extraction	deck extraction + pump
Wheel steering	hydraulic
Inside helm position	yes
Outside helm position	hydraulic

ACCOMMODATION

Cabins	2
Berths	4
Interior	teak
Floor	wood
Aft deck	yes
Saloon	yes
Headroom saloon (m)	1,95+/-
Heating	diesel ducted hot air Eberspracher
Aft Cabin	yes
Dinette	yes
Opening door to aft deck	yes
Galley	yes
Countertop	wood
Sink	stainless steel
Cooker	calor gas
Fridge	Isotherm
Hot water system	220V + engine
Water pressure system	electrical
Owners cabin	French bed
Bed length (m)	2,00 x 1,40
Wardrobe	hanging and shelves 7x



Bathroom	shared
Toilet	shared
Toilet system	manual
Wash basin	in the cabin
Shower	shared
Guest cabin 1	v-bed
Bed length (m)	2,00
Wardrobe	hanging/drawers/shelves 2x

MACHINERY

No of engines	1
Make	Mitsubishi
Type	Lister Petter
HP	66
kW	48.58
Fuel	diesel
Engine hours	1568
Engine cooling system	hopper cooling
Drive	shaft
Engine controls	bowden cable
Gearbox	mechanical
Bowthruster	electric
Thrust bearing	yes
Propeller type	fixed
Propeller shaft material	stainless steel
Electric bilge pump	yes
Electrical installation	yes
Batteries	4x Bosch 140Ah
Start battery	yes
Service battery	yes
Bowthruster battery	yes



Battery monitor	Victron
Battery charger/inverter	Victron Multiplus Compact12V/1600W/70A
Solar panel	Panasonic 245 WP
Shorepower	with cable
Extra info	yes

NAVIGATION

VHF handheld	yes
Navigation lights	yes

EQUIPMENT

Bathing platform	yes
Boarding ladder	stainless steel
Gangway	yes
Anchor	yes
Anchor chain	yes
Windlass	manual
Davits	stainless steel
Davits controls	manual
Sea railing	stainless steel
Grab rail (superstructure)	stainless steel
Wiper	4x
Horn	electric
Fenders	yes
Mooring lines	yes
Radio-cd player	yes
Speakers in salon	yes



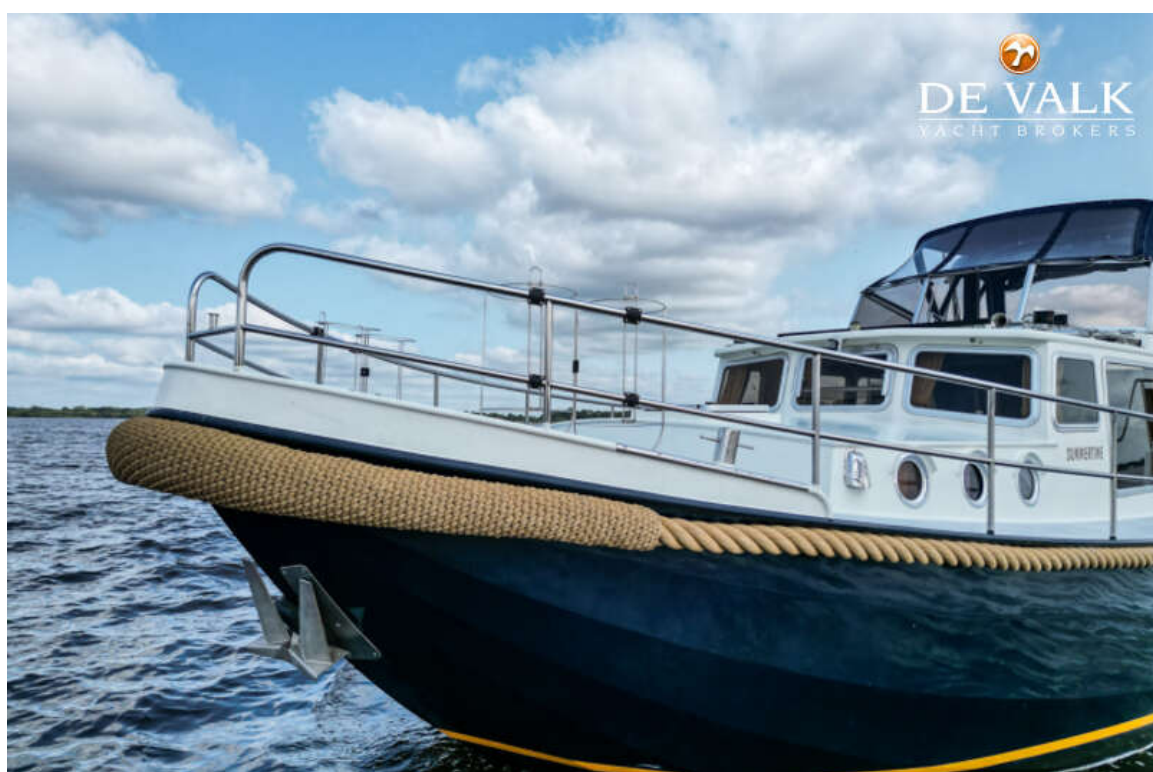
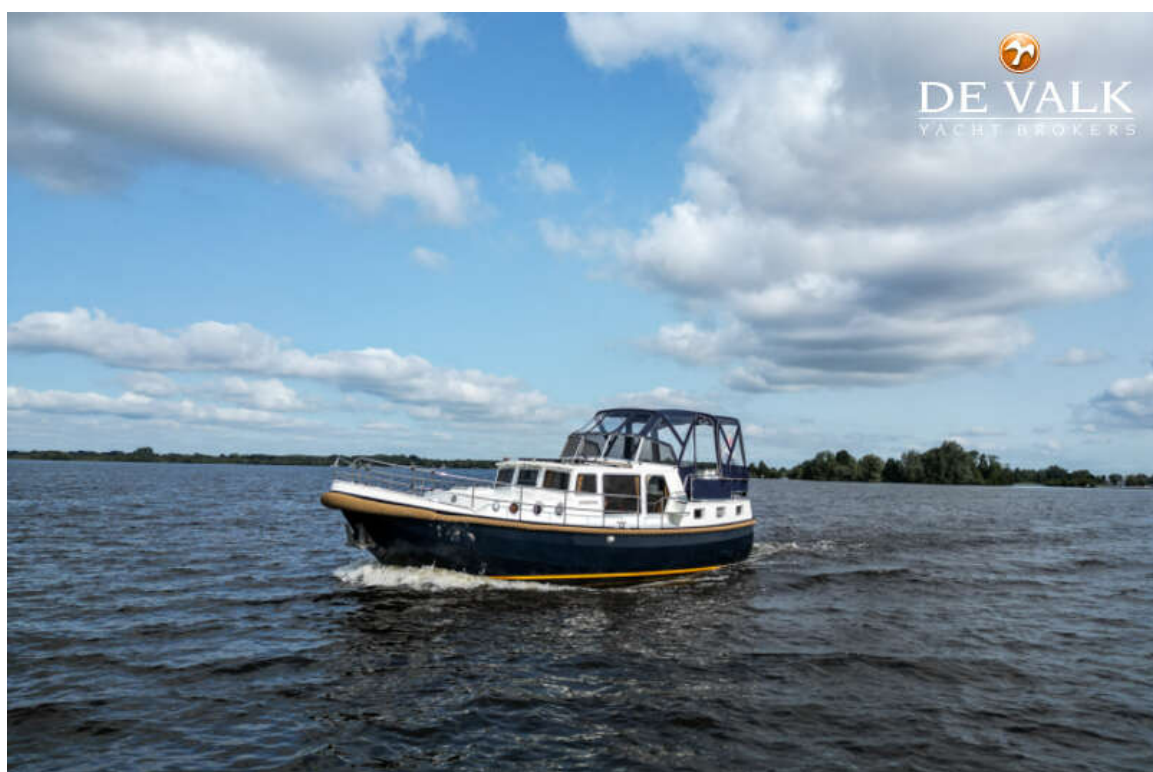


DUET VLET 10.40 AK

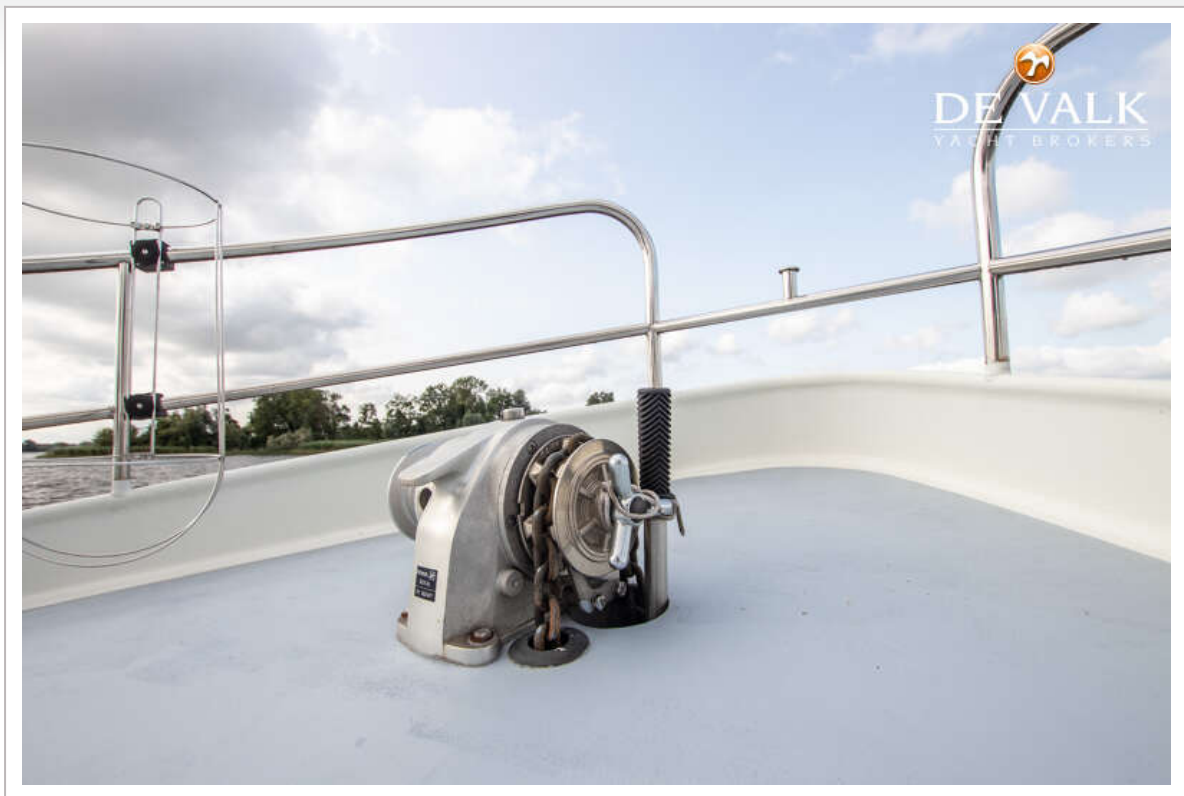




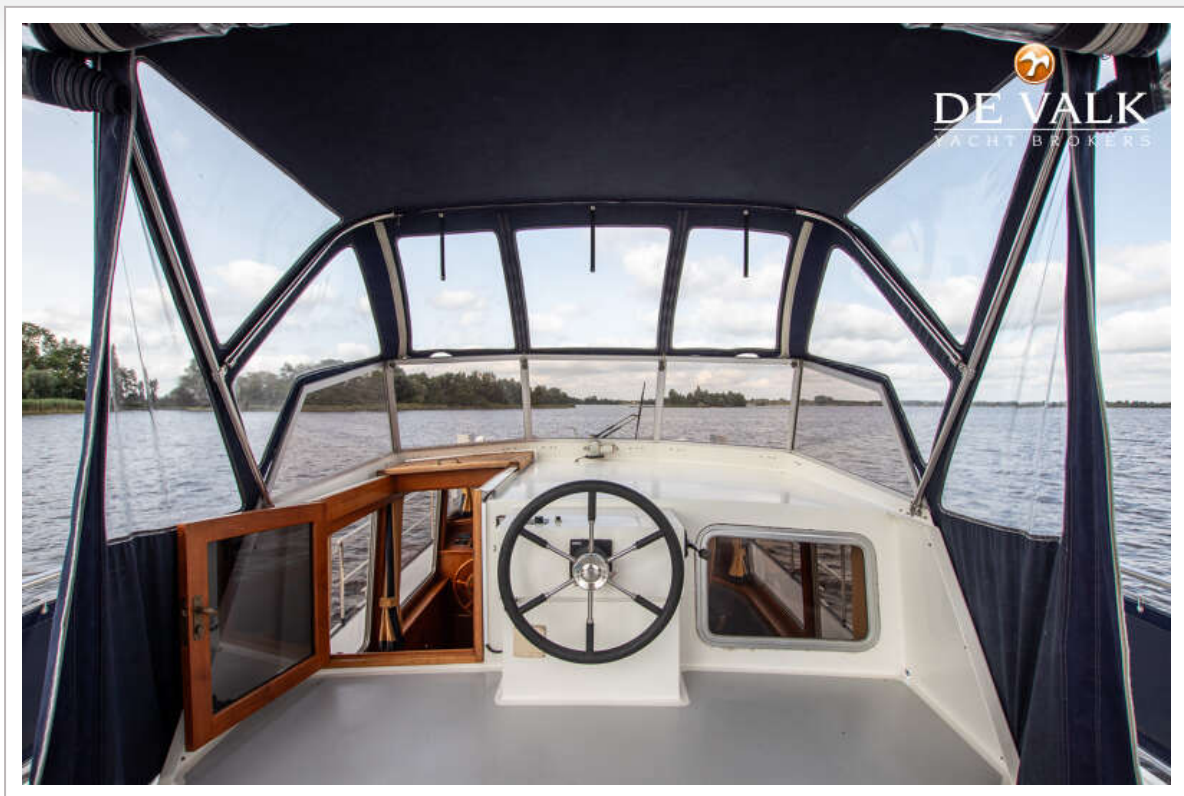




DUET VLET 10.40 AK

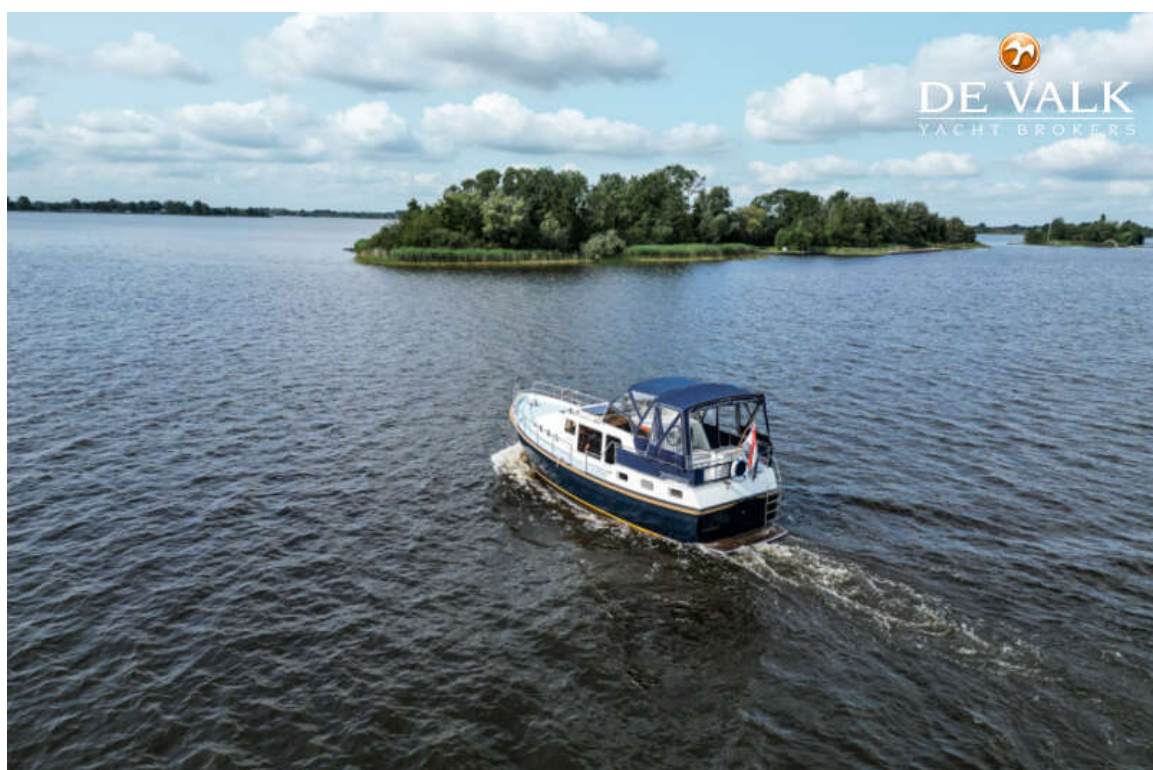


DUET VLET 10.40 AK

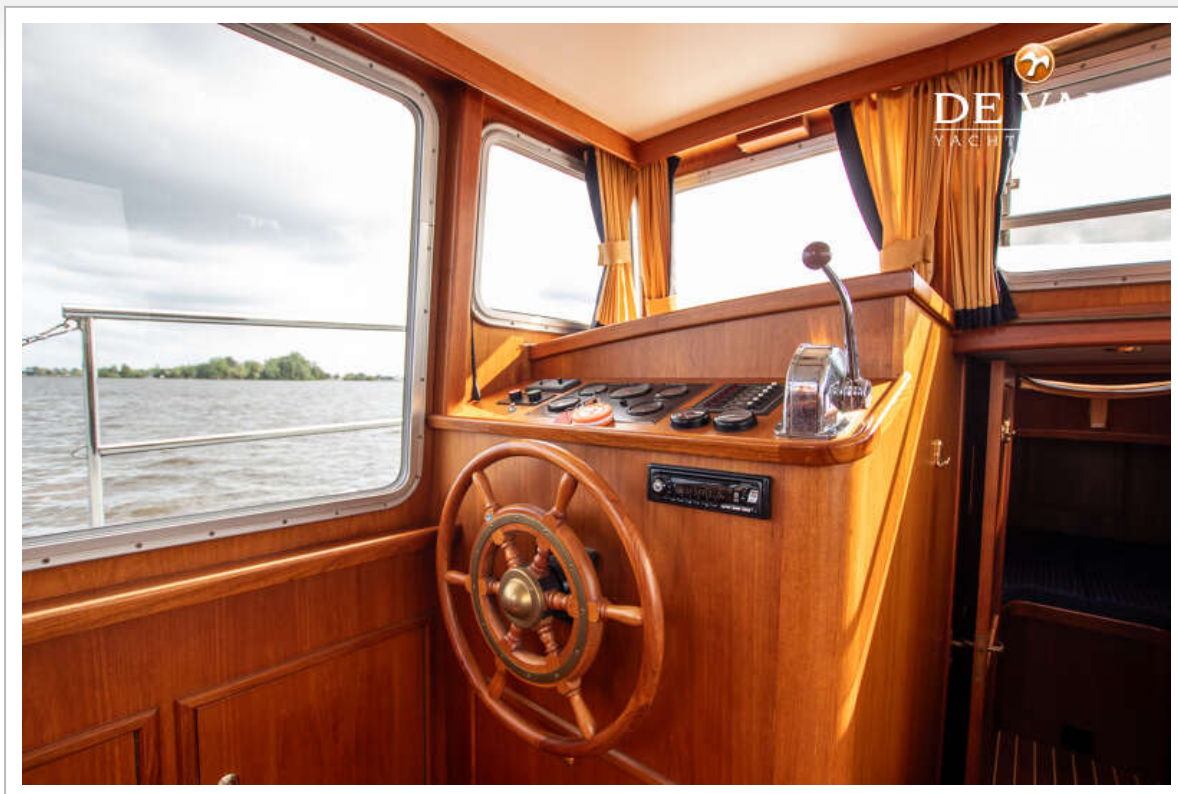


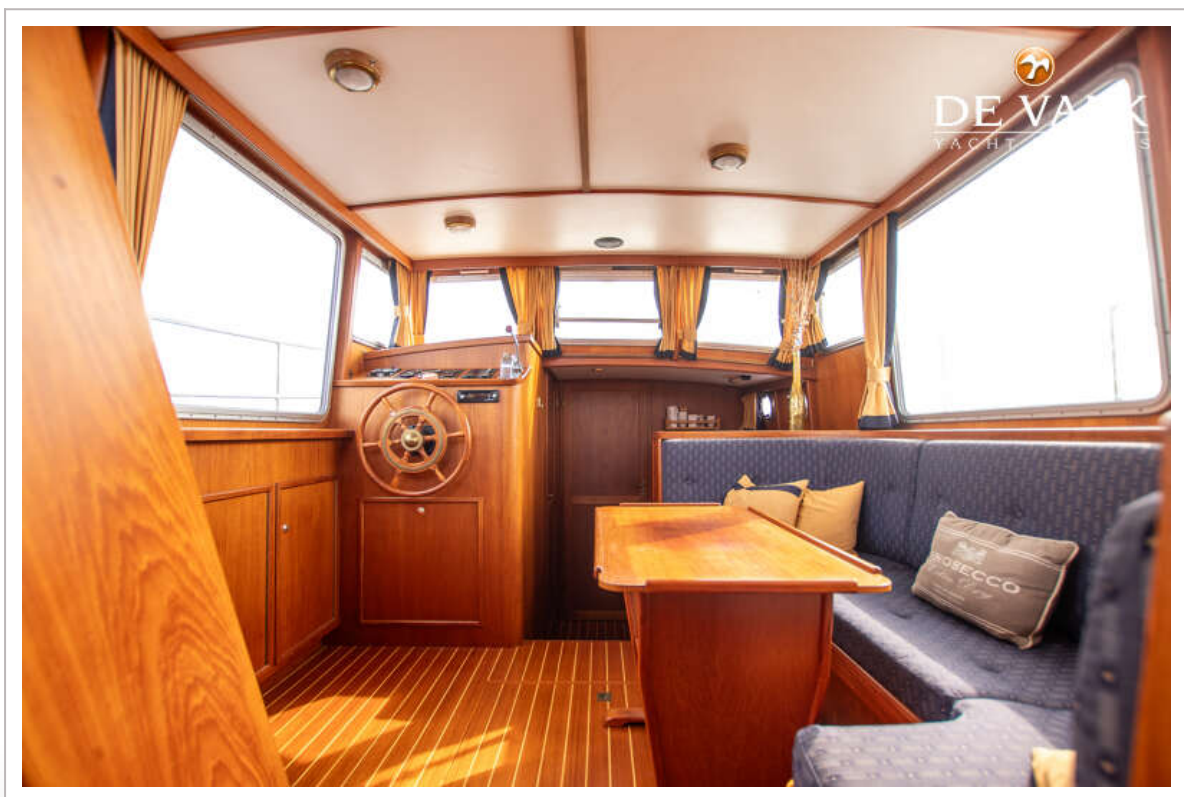
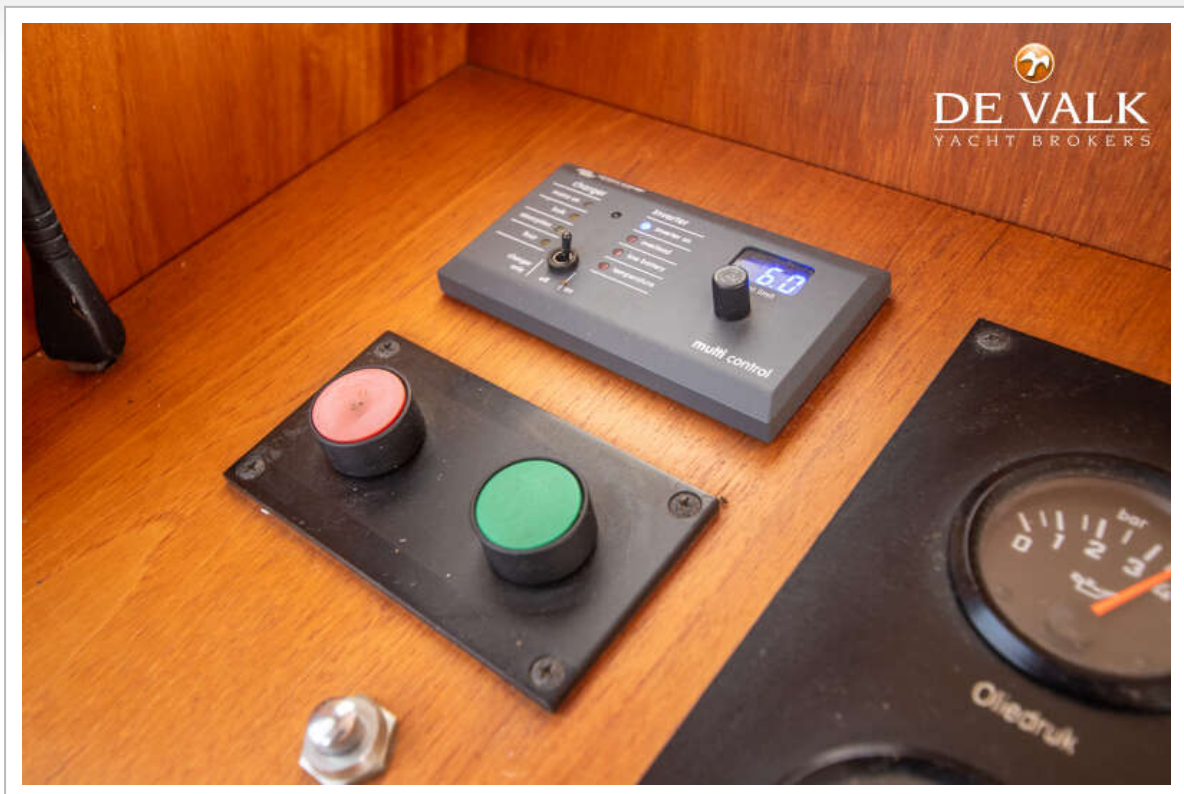






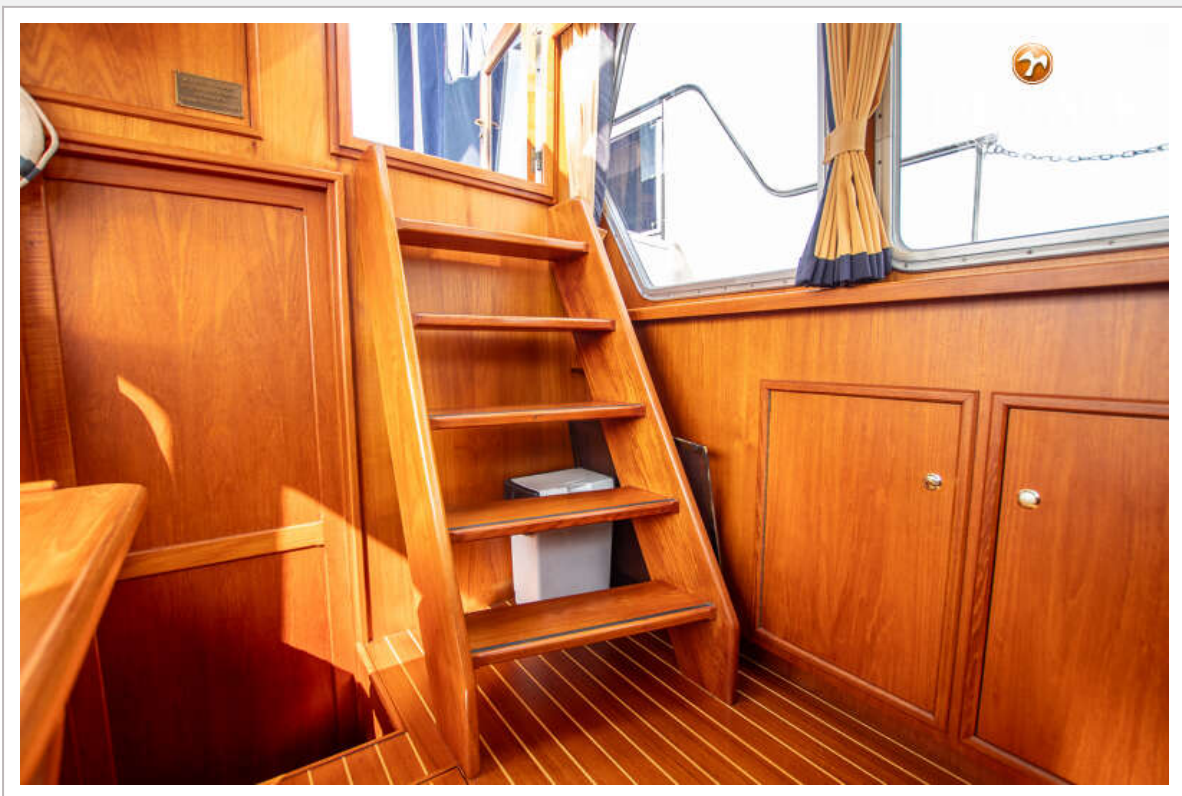
DUET VLET 10.40 AK

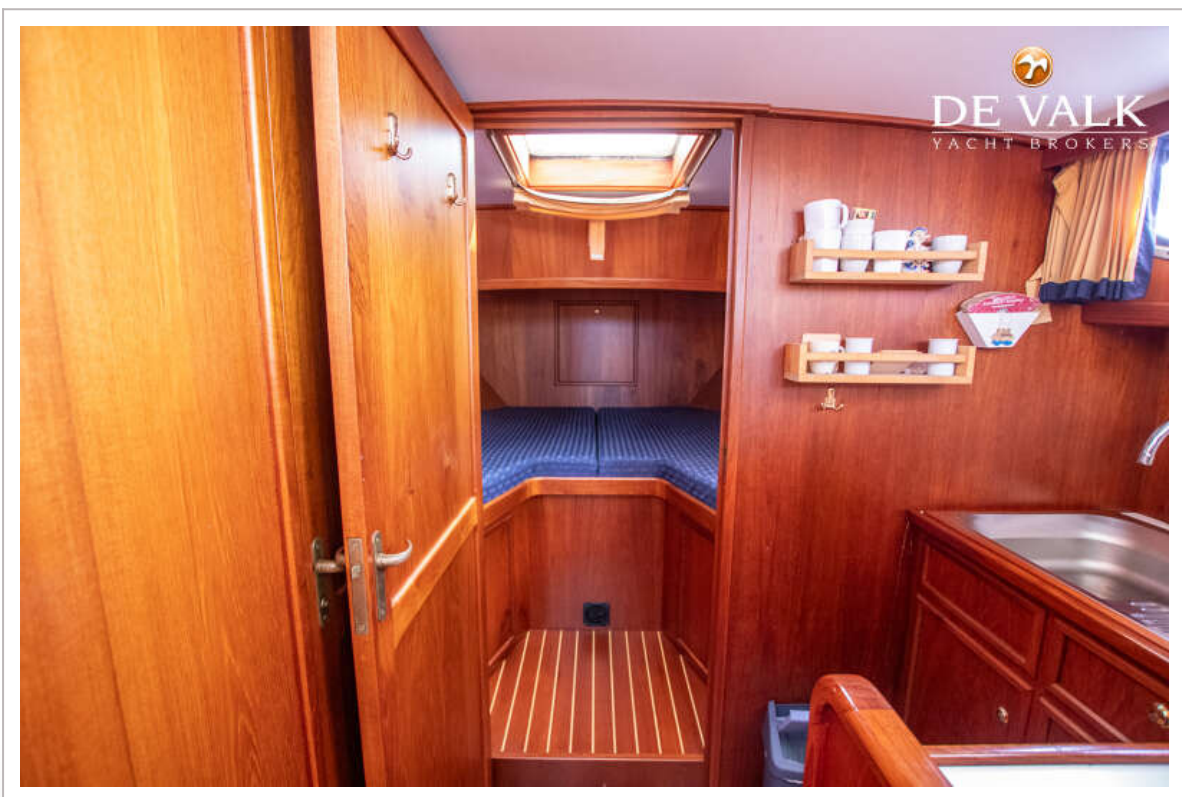


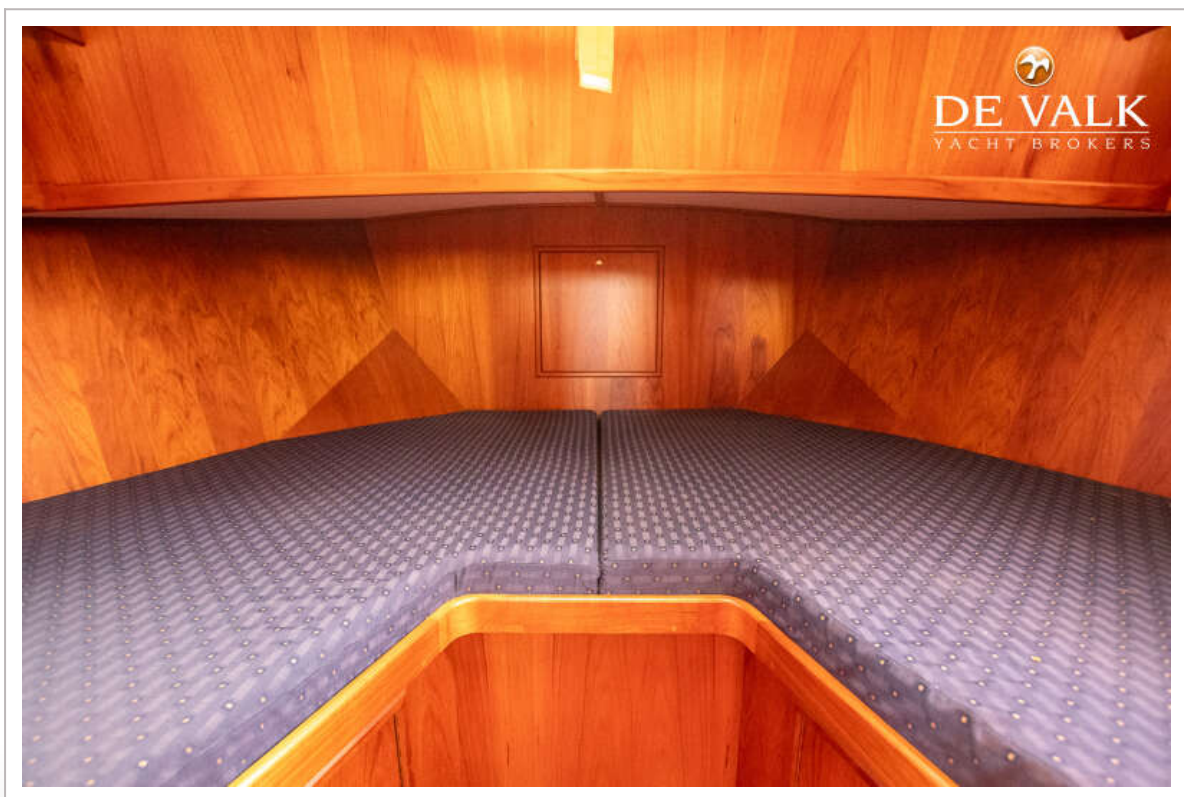
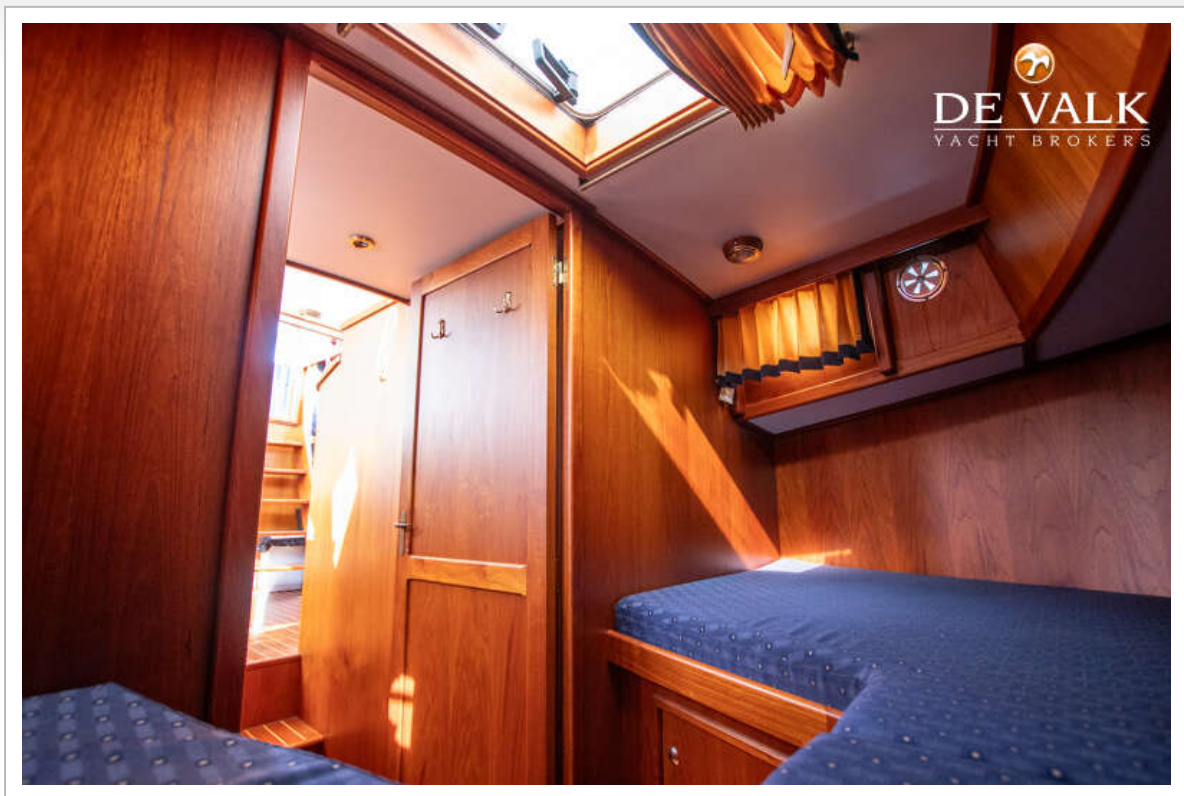


DUET VLET 10.40 AK

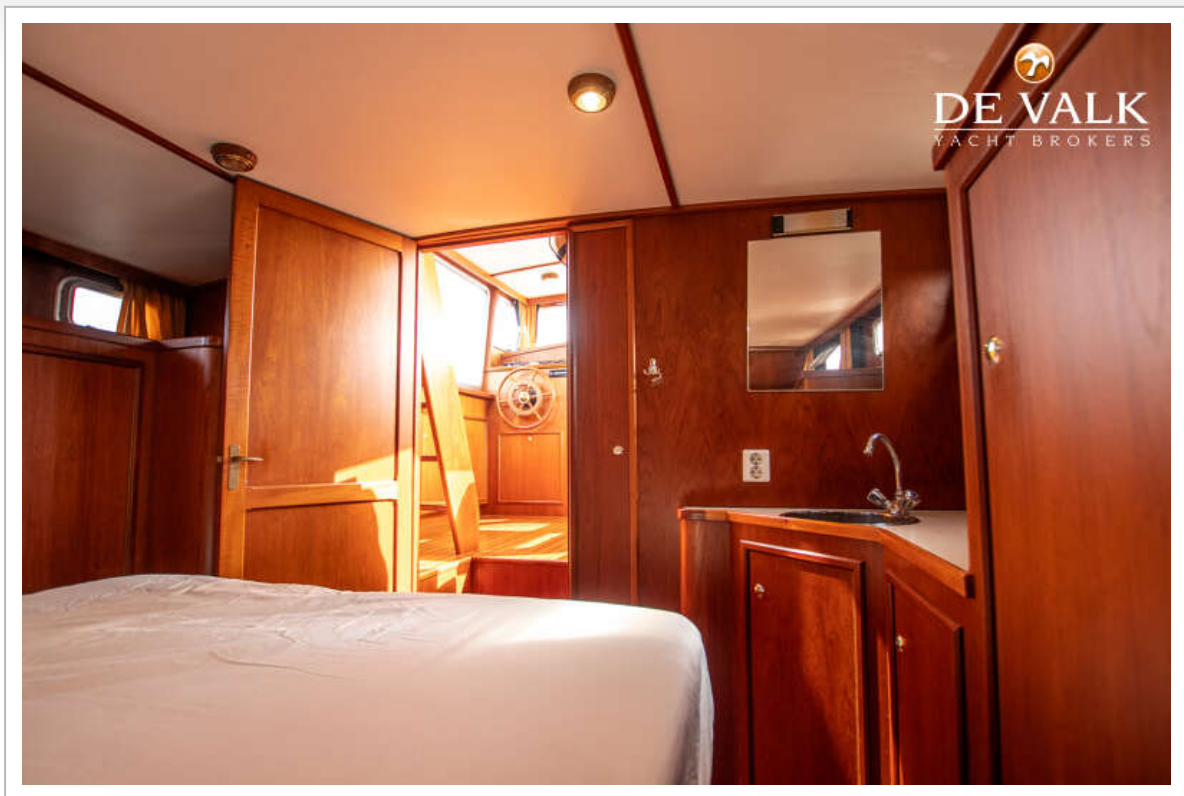


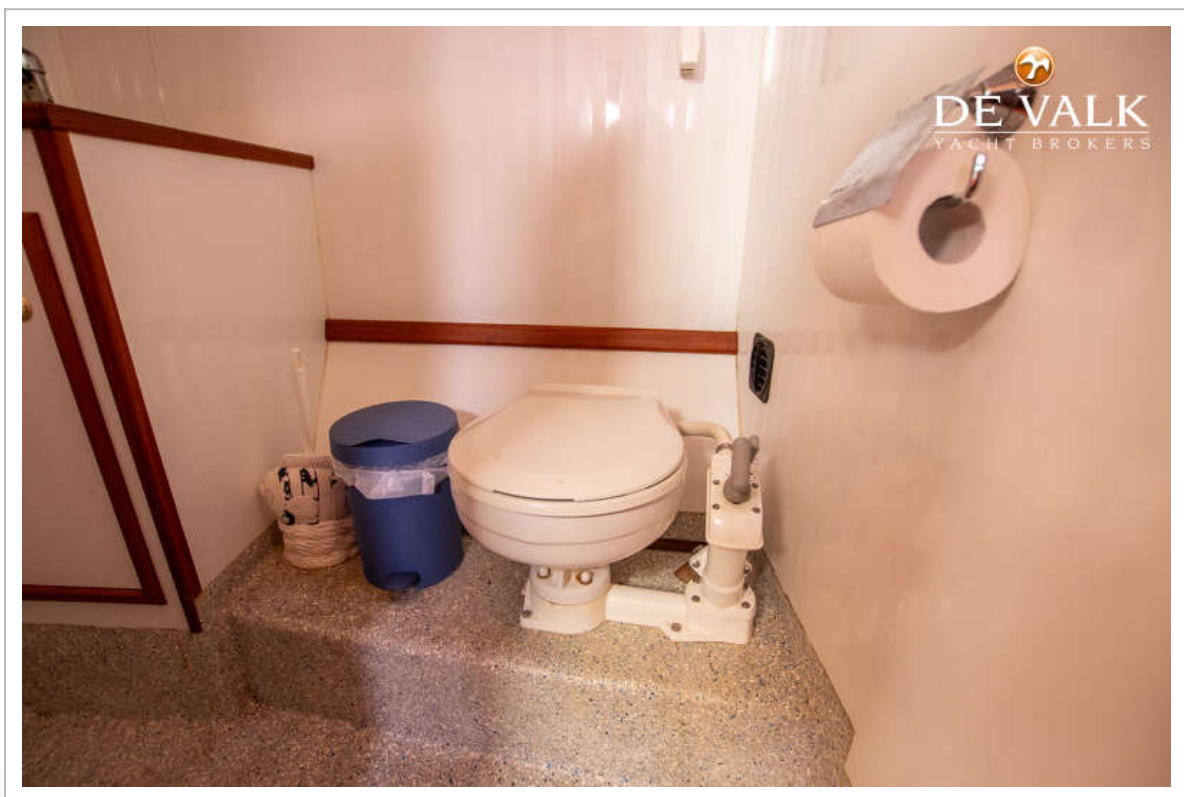
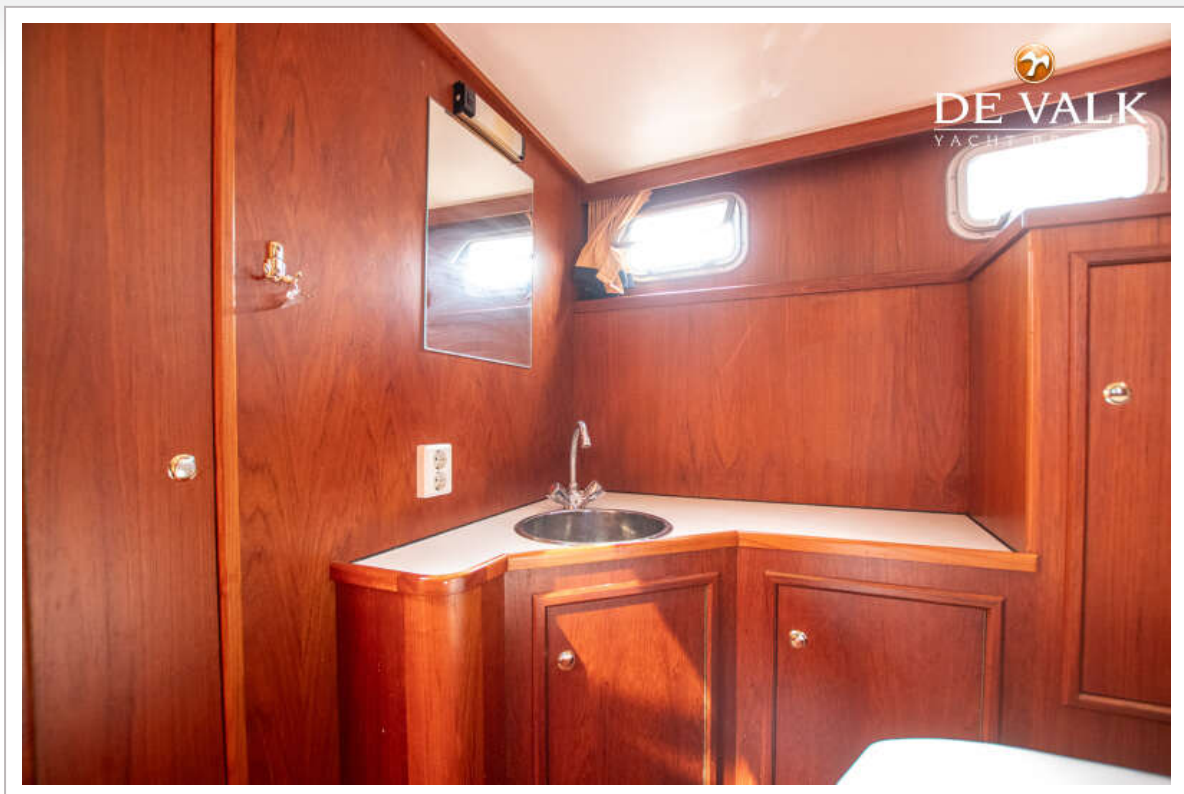


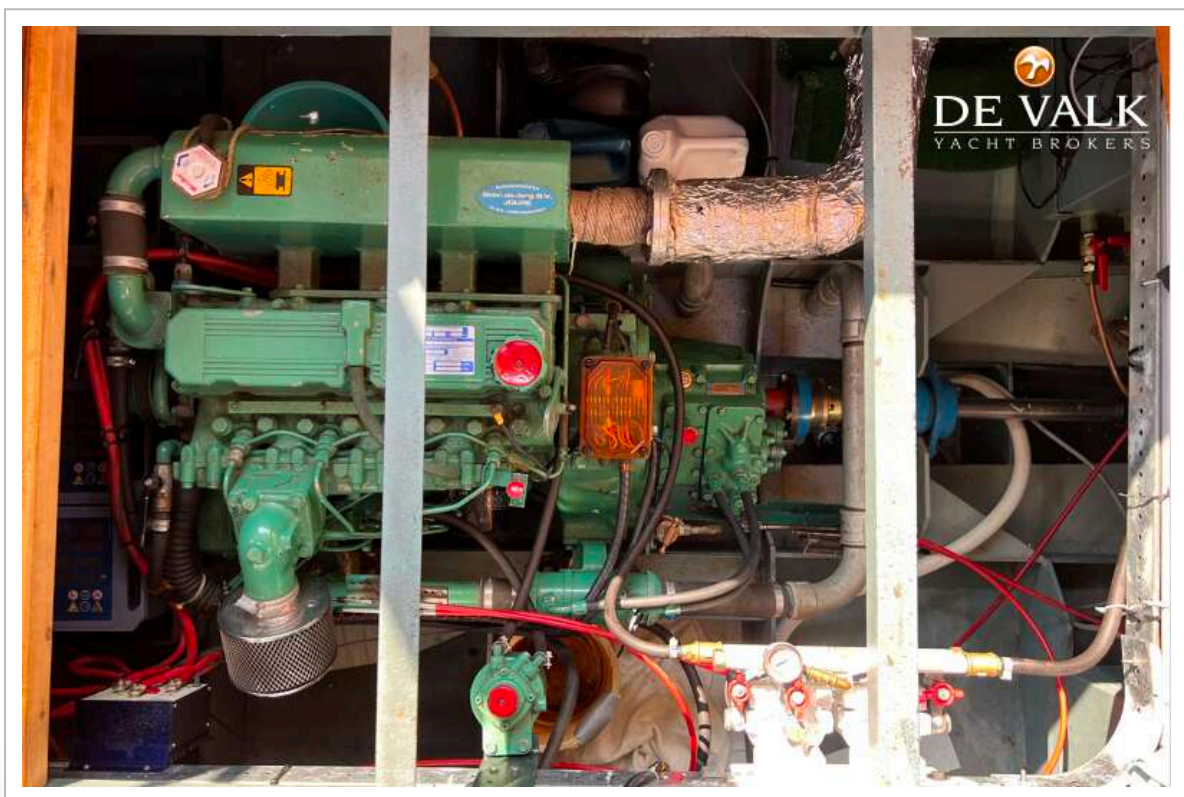
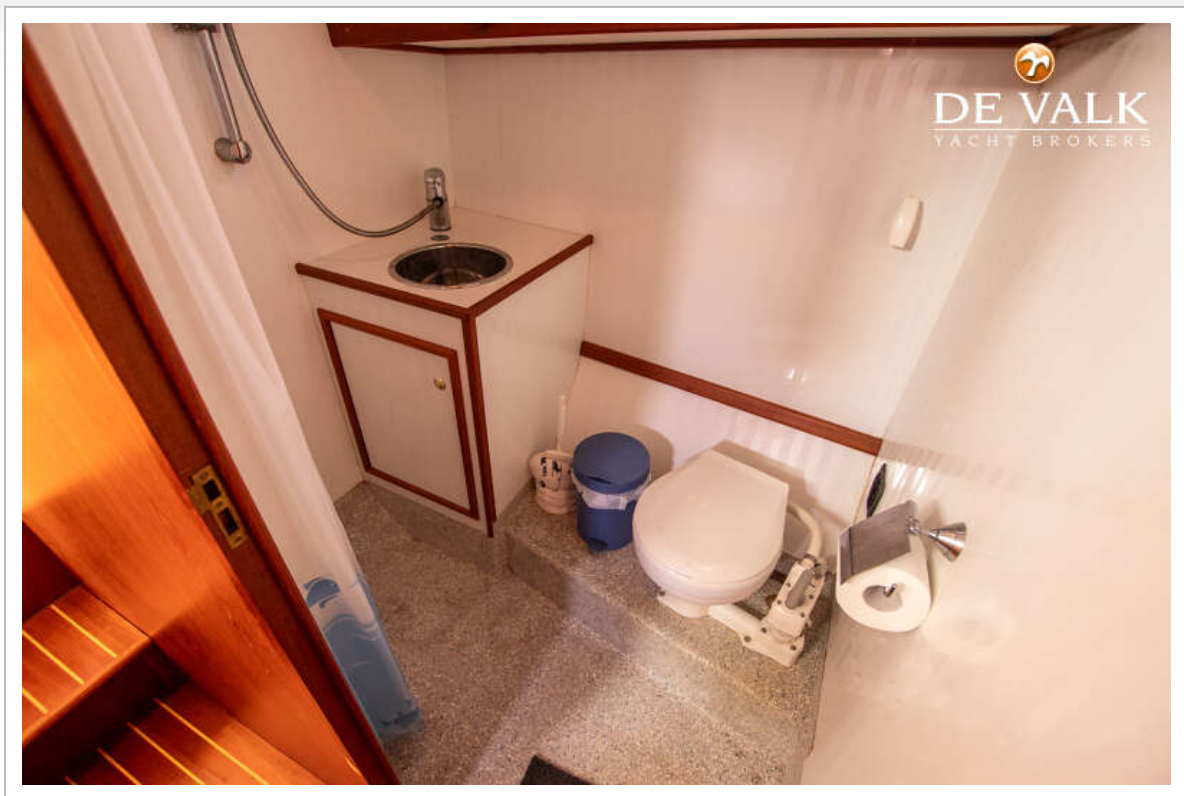




DUET VLET 10.40 AK







DUET VLET 10.40 AK

