



ANTARIS 900 SPECIAL



ANTARIS 900 SPECIAL

BROKER'S COMMENTS

Are you looking for a boat for wonderful weekend getaways? Then be sure to come take a look at this Antaris 900 Special. With her Italian design and powerful Yanmar diesel engine, this is a wonderful boat for nights out. The teak and woodwork have recently had attention and look very good. In addition, she has a very spacious sun deck which gives her a lot of outdoor space. The Antaris is available for viewing at our sales marina in Loosdrecht.

Julian de Heer

SPECIFICATIONS

Dimensions	8.60 x 2.60 x 0.65 (m)	Builder	Antaris
Built	2000	Cabins	1
Material	GRP	Berths	2
Engine(s)	1 x Yanmar 4CH-DTE 4 cil diesel	Hp/Kw	182.00 (hp), 133.95 (kw)
Asking price	sold (VAT)	Lying	at sales office

CONTACT

Sales office	De Valk Loosdrecht B.V.	Telephone	+31 (0)35 582 90 30
Address	't Breukeleveense Meentje 6 1231LM Loosdrecht / Wijdmeren NL	E-mail	loosdrecht@devalk.nl

DISCLAIMER

These particulars are given in good faith as supplied but cannot be guaranteed.



ANTARIS 900 SPECIAL

GENERAL

Model	ANTARIS 900 SPECIAL
Type	motor yacht
LOA (m)	8,60
Beam (m)	2,60
Draft (m)	0,65
Air draft (m)	2,60
Air draft min (m)	2,10
Year built	2000
Builder	Antaris
Country	Italy
CE norm	B
Hull material	GRP
Hull colour	beige
Superstructure material	GRP
Rubbing strake	fender rope
Deck material	GRP
Deck finish	teak
Superstructure deck finish	non-skid moulded in
Cockpit deck finish	teak
Antifouling (year)	yes
Window frame	stainless steel
Window material	glass
Fuel tank (litre)	2x 120
Level indicator (fuel tank)	yes
Freshwater tank (litre)	polyethylene 2x 80
Level indicator (freshwater)	yes
Wheel steering	hydraulic
Extra info	Boat has been lying on the shore in a warm shed every winter.

ACCOMMODATION



ANTARIS 900 SPECIAL

Cabins	1
Berths	2
Interior	cherry
Floor	teak
Open cockpit	Self-draining tub
Saloon	yes
Headroom saloon (m)	1,85+/-
Heating	diesel ducted hot air Webasto
Dinette	yes
Galley	yes
Countertop	wood
Sink	yes
Cooker	calor gas 3 jaar geleden leidingen vernieuwd
Fridge	Isotherm
Water pressure system	electrical
Bathroom	shared
Toilet	shared
Toilet system	electric
Wash basin	in the bathroom
Shower	shared

MACHINERY

No of engines	1
Make	Yanmar
Type	4CH-DTE 4 cil
HP	182
kW	133.95
Fuel	diesel
Maximum speed (kn)	18
Engine hours	1253
Engine cooling system	freshwater heat exchanger



ANTARIS 900 SPECIAL

Drive	shaft
Engine controls	bowden cable
Gearbox	hydraulic
Exhaust	watercooled
Propeller type	fixed
Propeller shaft material	stainless steel
Manual bilge pump	1x
Electric bilge pump	2x
Batteries	yes
Start battery	yes
Service battery	yes
Battery charger	yes
Shorepower	with cable

NAVIGATION

Compass	Plastimo
GPS	Garmin
Navigation lights	yes

EQUIPMENT

Bimini	yes
Winter cover	Niet aanwezig
Cockpit cushions	yes
Cockpit table	yes
Bathing platform	Teak
Boarding ladder	stainless steel
Deck shower	yes
Anchor	yes
Windlass	electrical
Sea railing	yes
Grab rail (superstructure)	stainless steel



ANTARIS 900 SPECIAL

Horn	yes
Fenders	yes
Mooring lines	yes
TV	Philips
Radio-cd player	yes
Extra info	Windlass Operable from foredeck and steering position



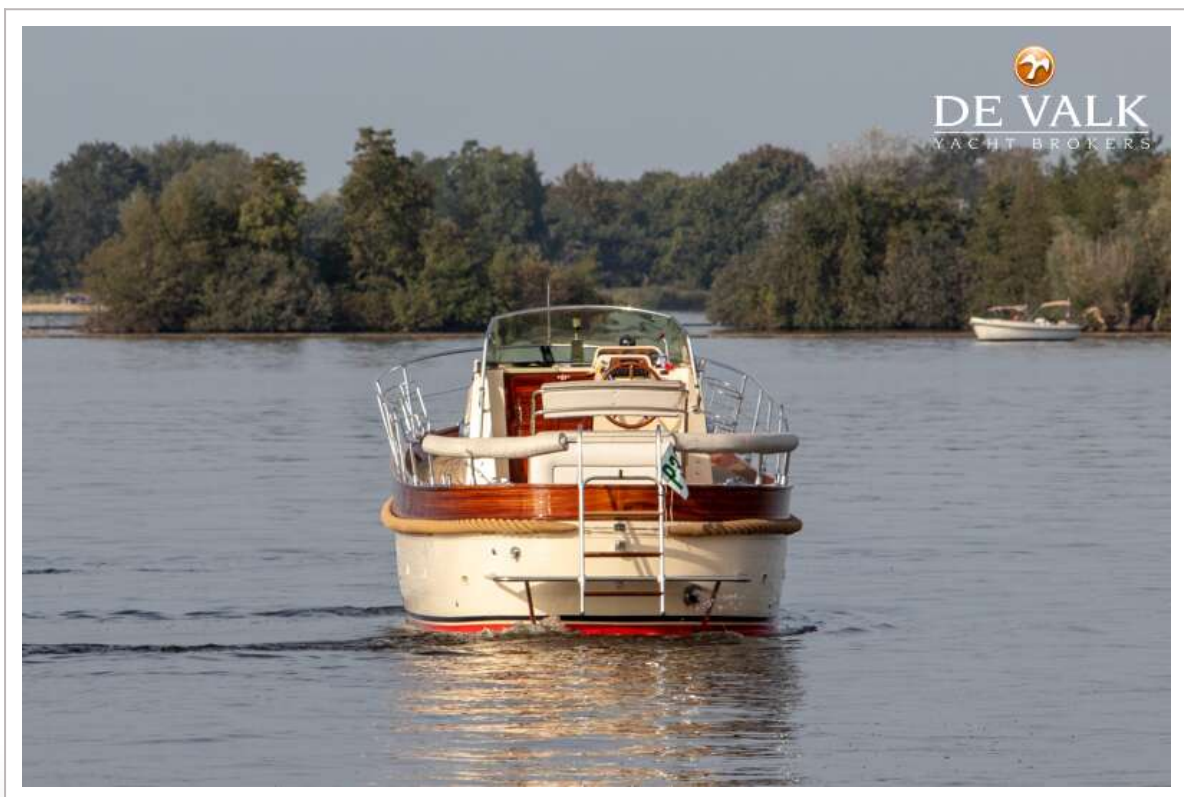
ANTARIS 900 SPECIAL



ANTARIS 900 SPECIAL



ANTARIS 900 SPECIAL



ANTARIS 900 SPECIAL



ANTARIS 900 SPECIAL



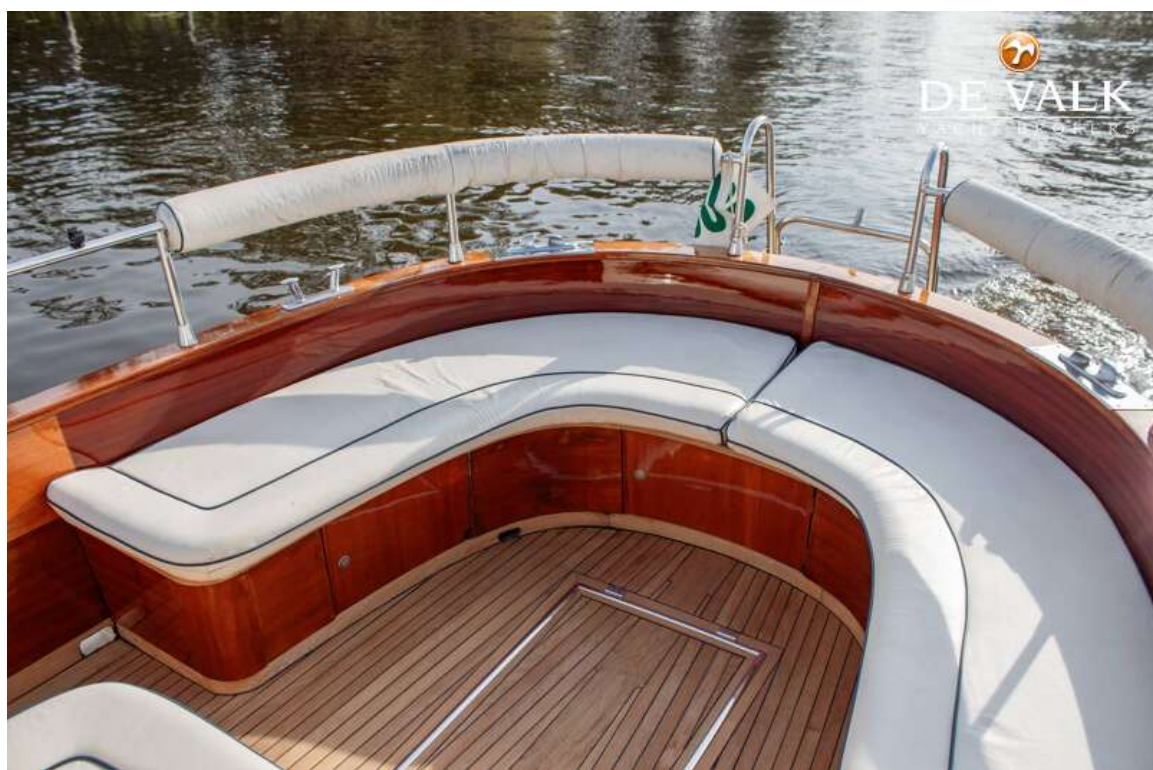
ANTARIS 900 SPECIAL



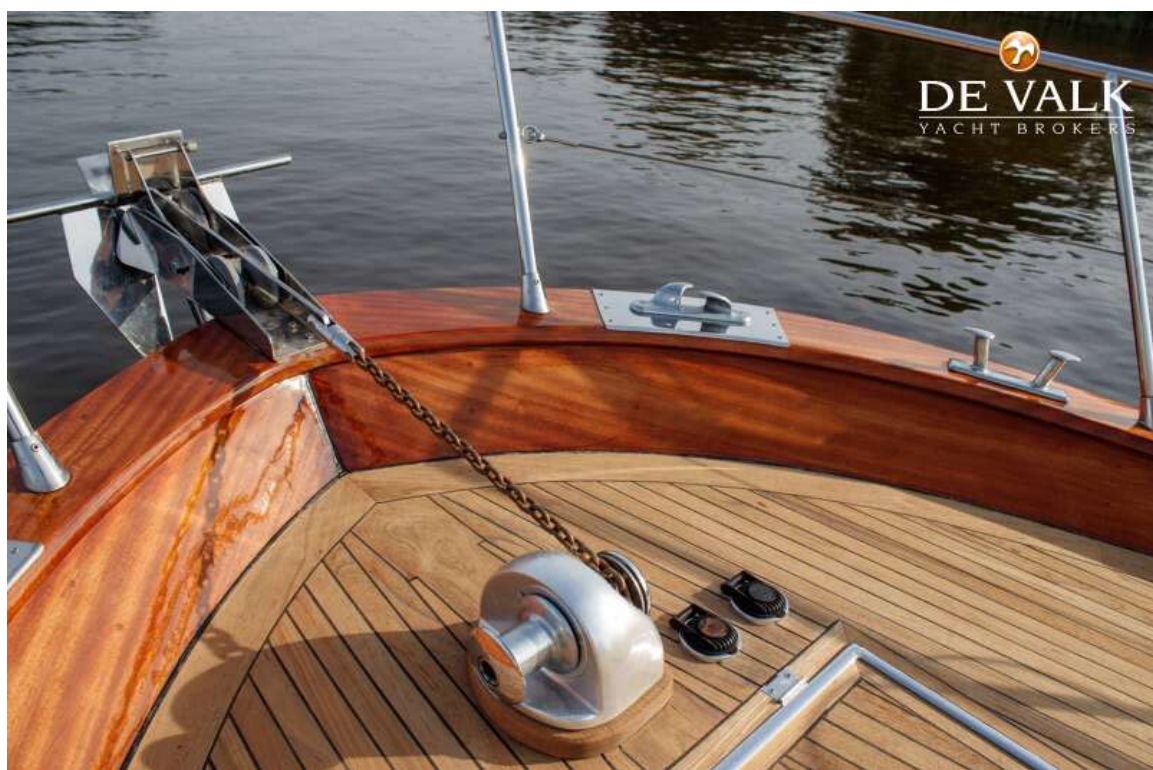
ANTARIS 900 SPECIAL



ANTARIS 900 SPECIAL



ANTARIS 900 SPECIAL



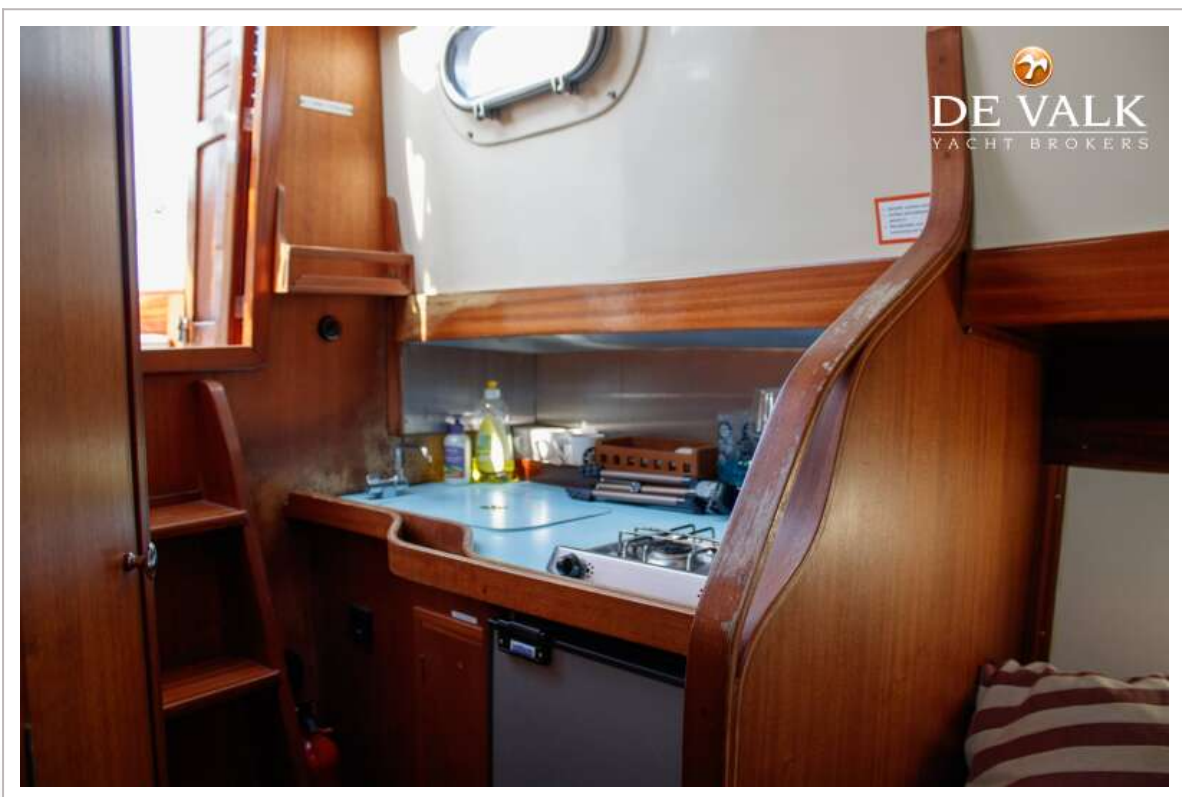
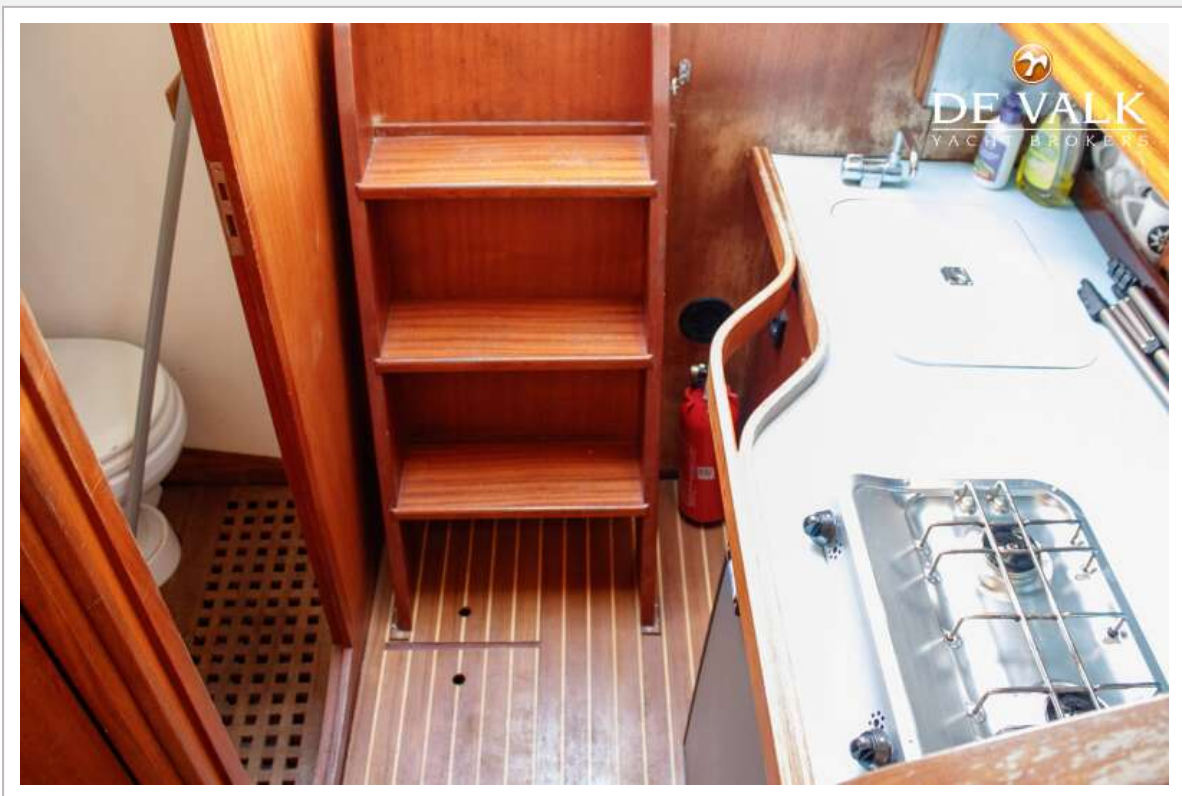
ANTARIS 900 SPECIAL



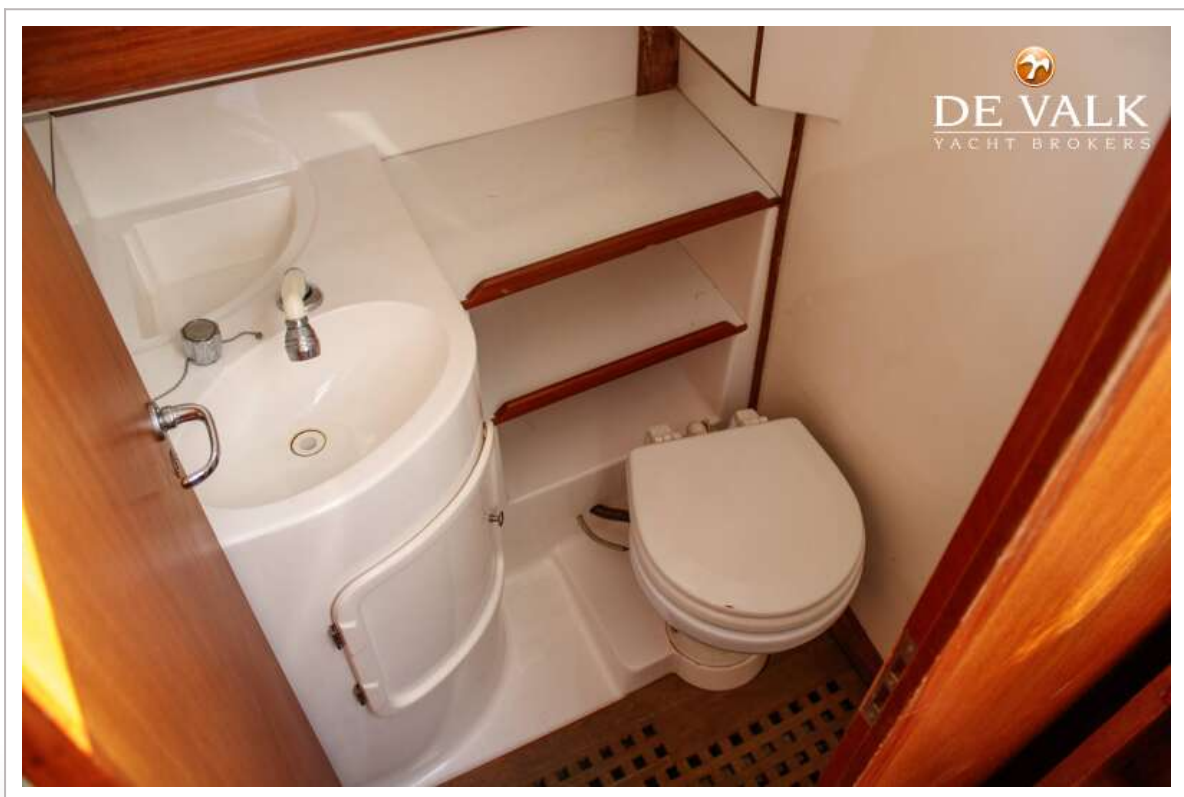
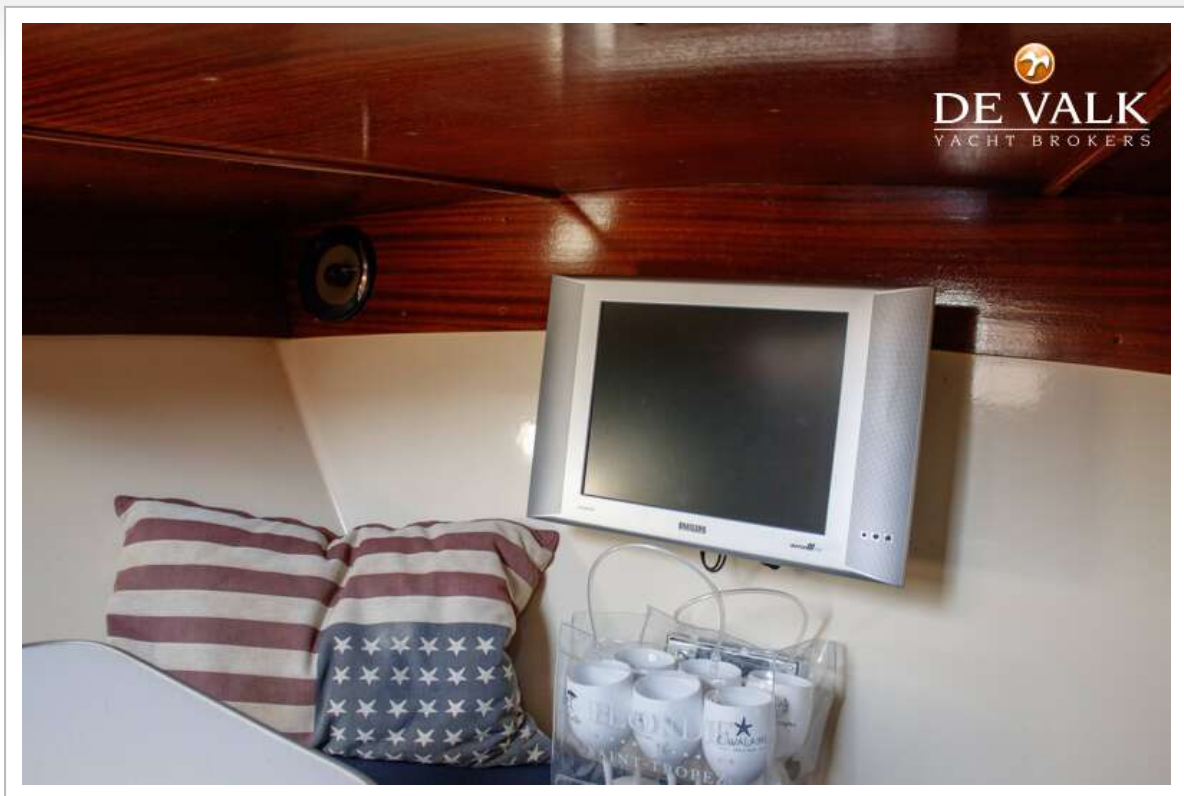
ANTARIS 900 SPECIAL



ANTARIS 900 SPECIAL



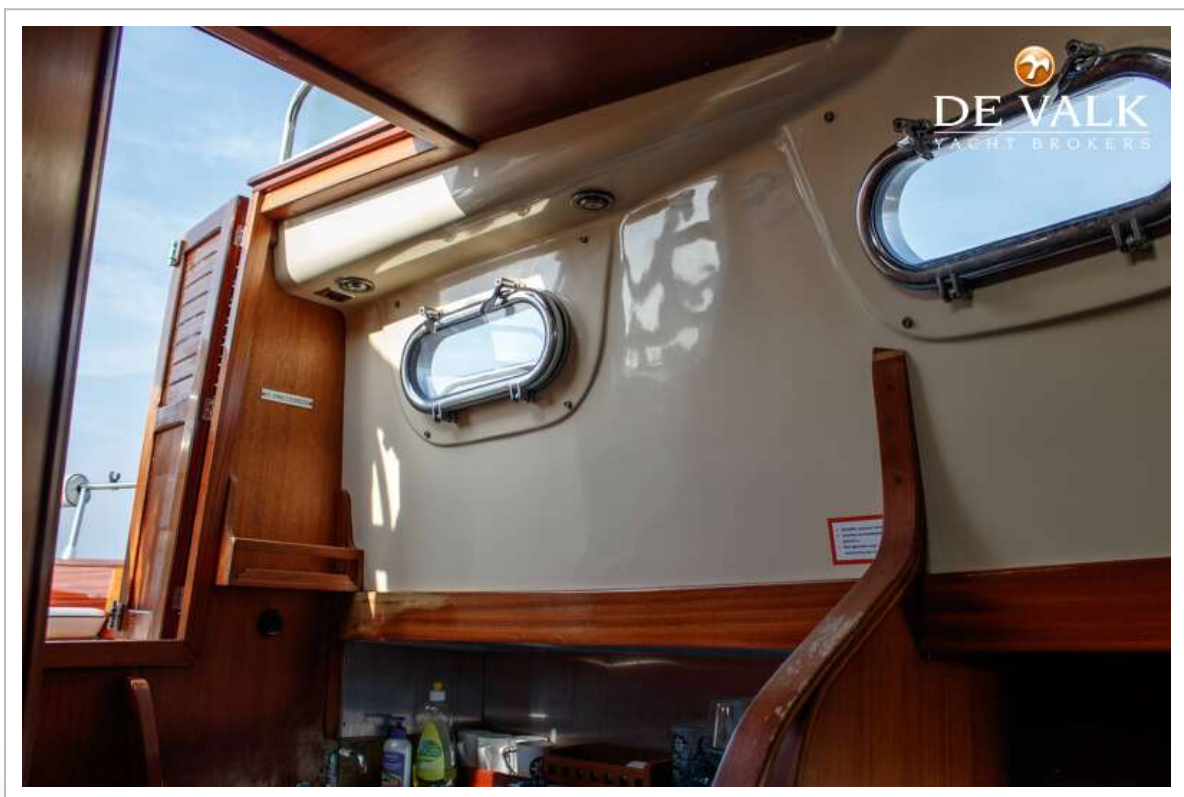
ANTARIS 900 SPECIAL



ANTARIS 900 SPECIAL



ANTARIS 900 SPECIAL



ANTARIS 900 SPECIAL



ANTARIS 900 SPECIAL

