



HALLBERG RASSY 312 MKII



HALLBERG RASSY 312 MKII

BROKER'S COMMENTS

The Hallberg-Rassy 312 has not only been an enormous selling success, but it remains a timeless yacht due to her building quality and well thought design. Interior and exterior offer the maximum of what you might expect from a boat of this size. SY "Argos" has received a new teak deck and refurbished underwater hull. The caring owner may expect many years of sailing joy further on.

Jürgen Jacobs

SPECIFICATIONS

Dimensions	9.45 x 3.08 x 1.62 (m)	Builder	Hallberg Rassy Varvet
Built	1991	Cabins	2
Material	GRP	Berths	4
Engine(s)	1 x Volvo Penta MD 2003 diesel	Hp/Kw	28.00 (hp), 20.61 (kw)
Asking price	sold (VAT)	Lying	contact sales office

CONTACT

Sales office	De Valk Hamburg	Telephone	+49 40 46 000 999
Address	Domstraße 11 20095 Hamburg DE	E-mail	hamburg@devalk.nl

DISCLAIMER

These particulars are given in good faith as supplied but cannot be guaranteed.



HALLBERG RASSY 312 MKII

GENERAL

Model	HALLBERG RASSY 312 MKII
Type	sailing yacht
LOA (m)	9,45
LWL (m)	7,70
Beam (m)	3,08
Draft (m)	1,62
Year built	1991
Builder	Hallberg Rassy Varvet
Country	Sweden
Displacement (t)	5,8
Ballast (tonnes)	cast iron 2,7
Hull material	GRP
Hull colour	white
Superstructure material	GRP
Deck material	teak New Teakdeck in 2022
Cockpit deck finish	teak New Teak in 2022
Fuel tank (litre)	stainless steel 110L
Freshwater tank (litre)	stainless steel 120L
Blackwater tank (litre)	stainless steel
Wheel steering	Tiller Steering possible
Emergency tiller	yes

ACCOMMODATION

Cabins	2
Berths	4
Interior	mahogany
Floor	teak and holly
Saloon	yes
Heating	diesel ducted hot air Webasto
Chart table	yes



HALLBERG RASSY 312 MKII

Galley	yes
Sink	stainless steel
Cooker	calor gas
Oven	yes
Fridge	yes
Hot water system	220V
Water pressure system	electrical
Owners cabin	v-bed
Toilet	separate
Toilet system	manual

MACHINERY

No of engines	1
Make	Volvo Penta
Type	MD 2003
HP	28
kW	20.61
Fuel	diesel
Engine cooling system	seawater Single circuit seawater
Drive	shaft
Saildrive seal	Renewed 2022 including new shaft
Propeller type	fixed New in 2020
Propeller blades	3
Propeller shaft material	stainless steel
Manual bilge pump	In Cockpit
Electric bilge pump	2 x
Batteries	yes
Start battery	yes
Service battery	3 x new in 2019
Battery charger	yes
Shorepower	with cable



NAVIGATION

Compass	yes
Depth sounder	yes
Log	yes
Windset	yes
VHF	yes
GPS	yes
Weather receiver	NASA Target (outdated)
AIS transceiver	yes
Navigation lights	LED

EQUIPMENT

Fixed windscreen	yes
Sprayhood	New in 2016
Winter cover	For standing Mast
Cockpit cushions	yes
Cockpit table	yes
Boarding ladder	yes
Anchor	CQR Plough 25kg
Anchor chain	50m of 8mm Ø
Anchor 2	Bruce M-Anchor, 15kg
Windlass	electrical Lofrans KOBRA, new in 2022, remote control on cable
Grab rail (superstructure)	teak
Pushpit	yes
Pulpit	yes
Lifejackets	3 x automatic
Fenders	8 normal, 1 ball-fender
Mooring lines	yes
Radio-cd player	Pioneer
Speakers in salon	yes
Clock - barometer	yes



RIGGING

Standing rigging	wire
Brand mast	Seldén
Material mast	aluminium
Mainsail	yes
Fully battened mainsail	yes
Stoway mast	yes
Genoa	yes
Genoa furler	yes
Genoa sheetwinches	yes
Halyard winches	yes
Spi-pole	yes



HALLBERG RASSY 312 MKII



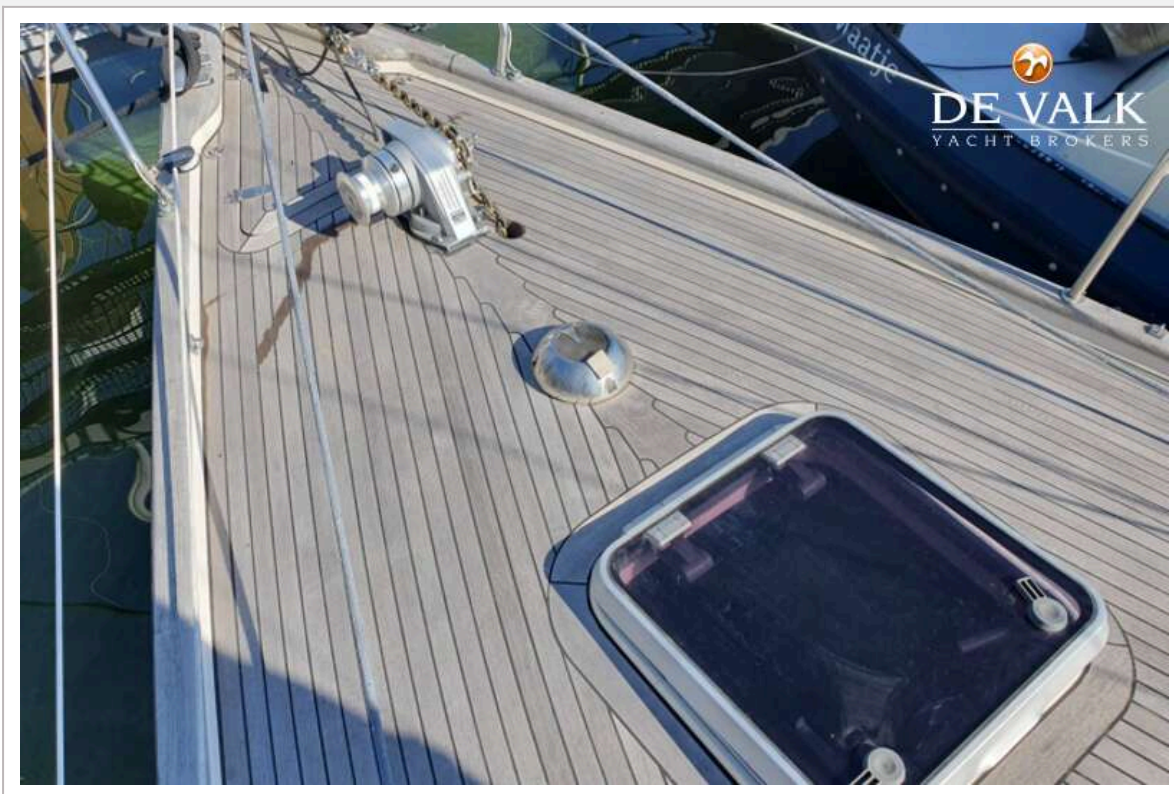
HALLBERG RASSY 312 MKII



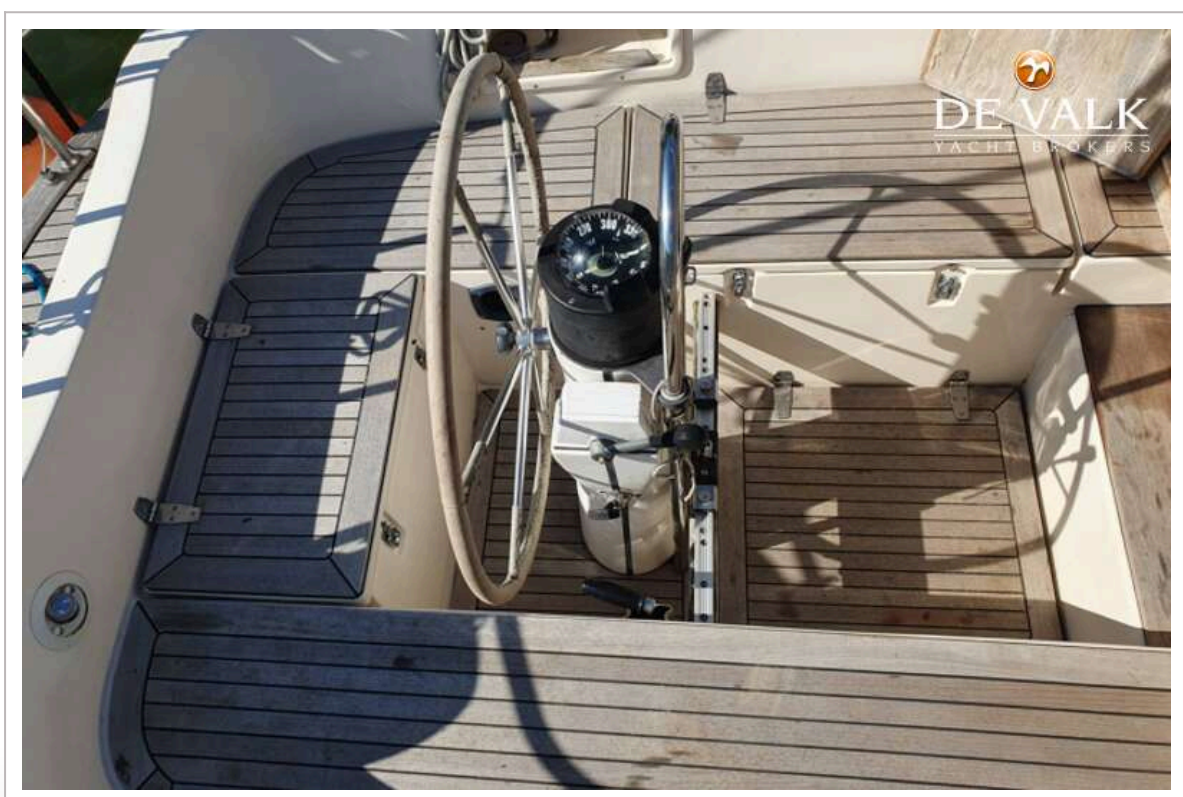
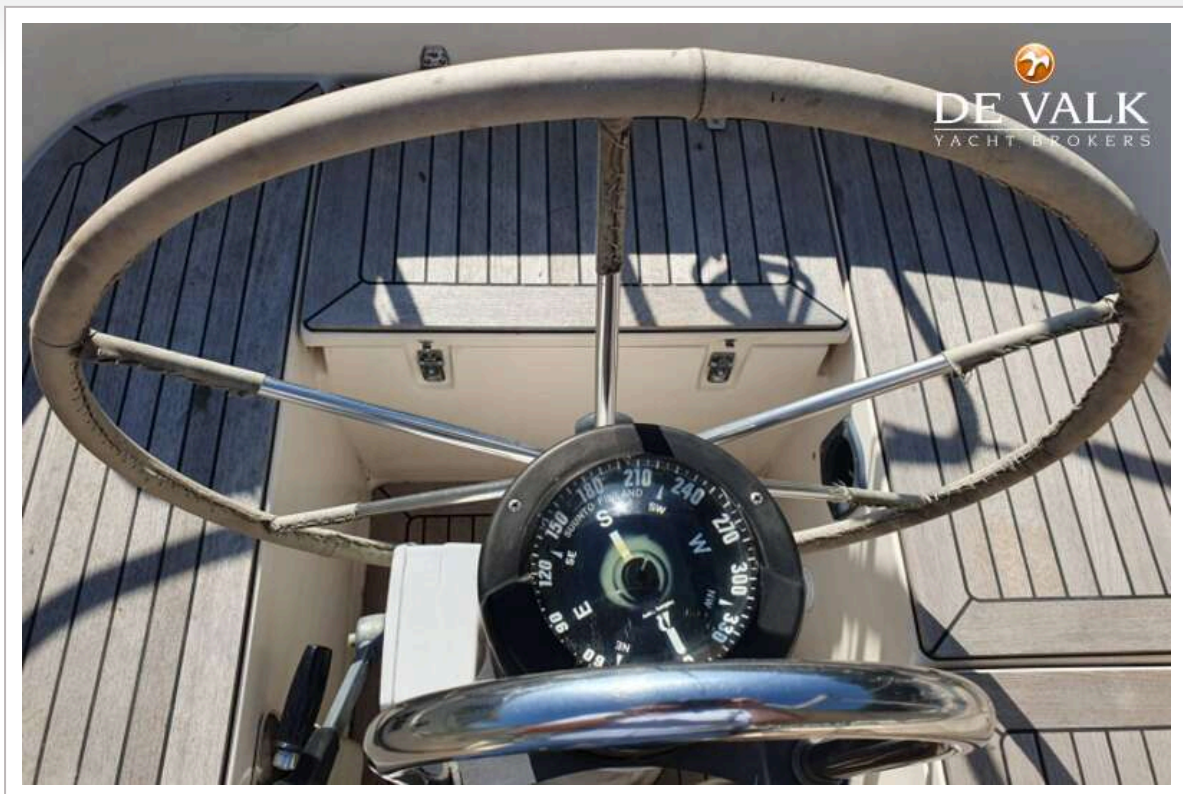
HALLBERG RASSY 312 MKII



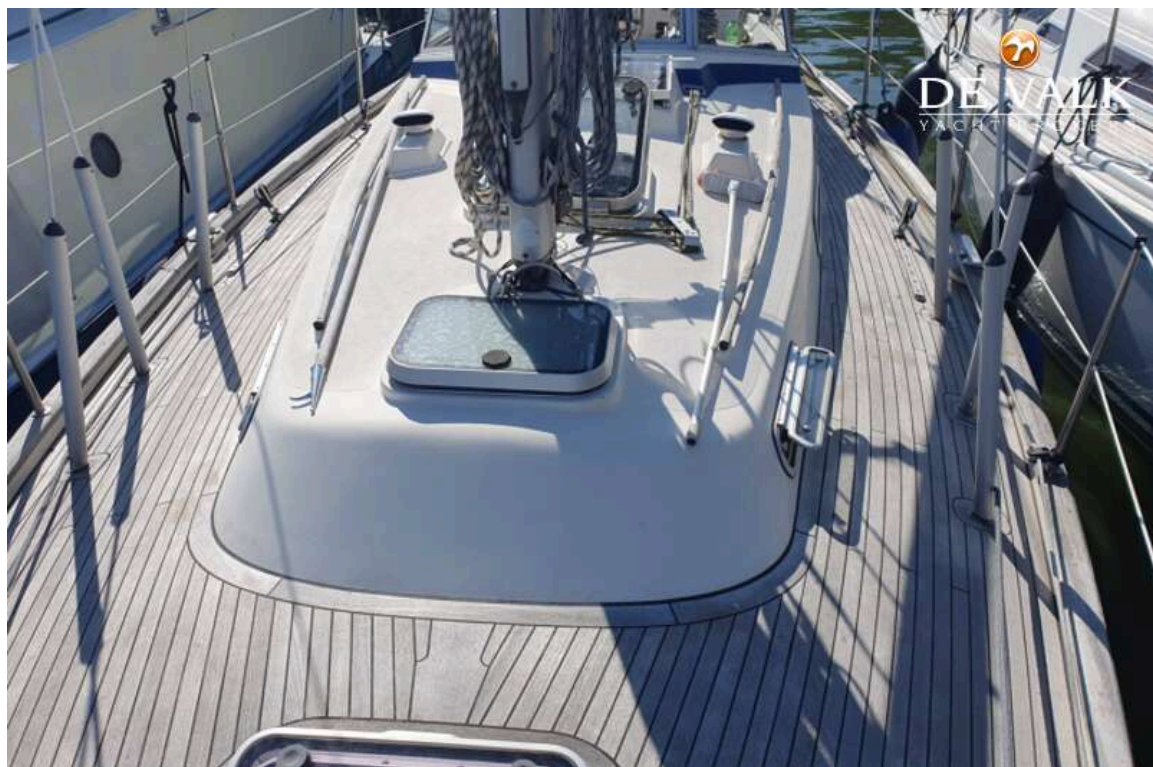
HALLBERG RASSY 312 MKII



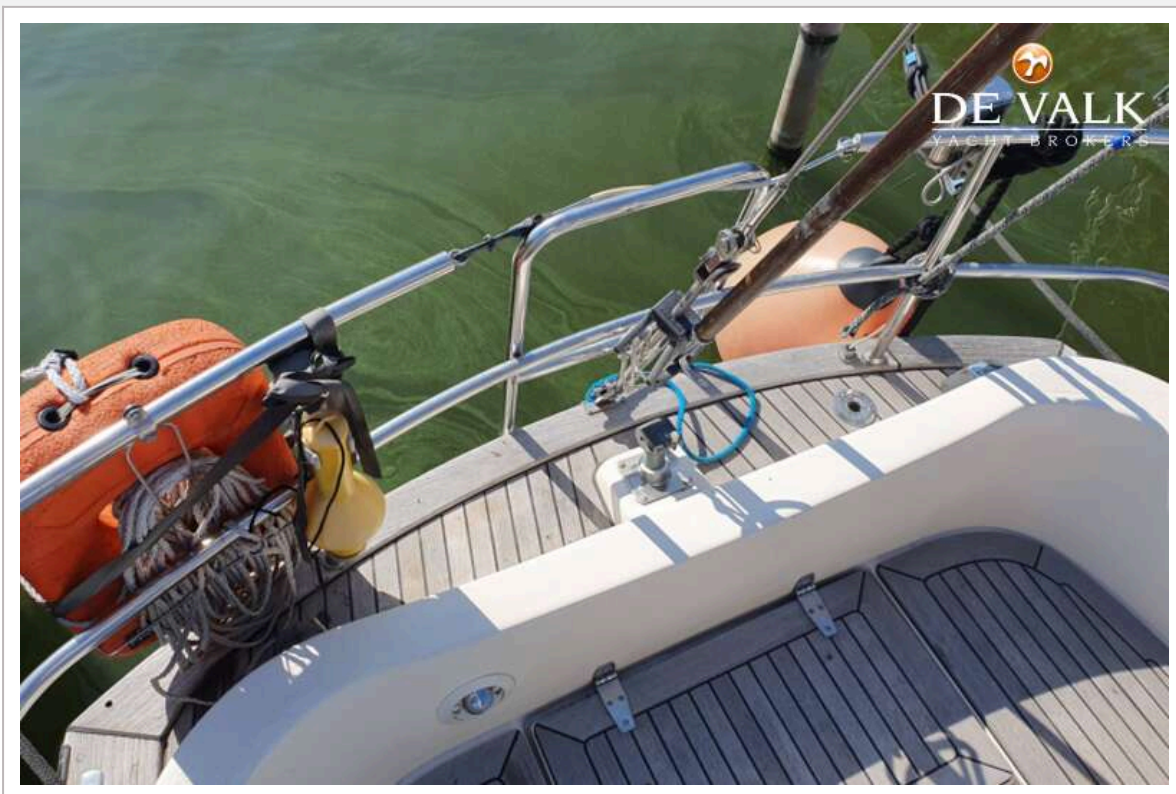
HALLBERG RASSY 312 MKII



HALLBERG RASSY 312 MKII



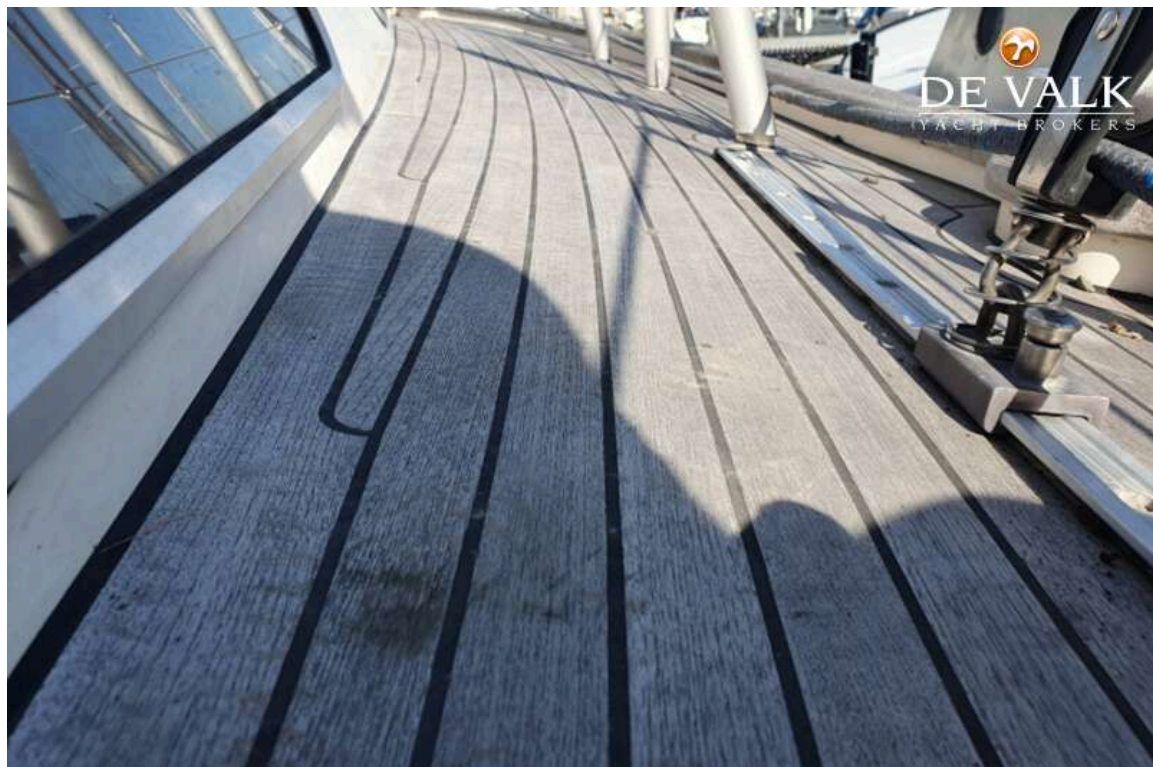
HALLBERG RASSY 312 MKII



HALLBERG RASSY 312 MKII



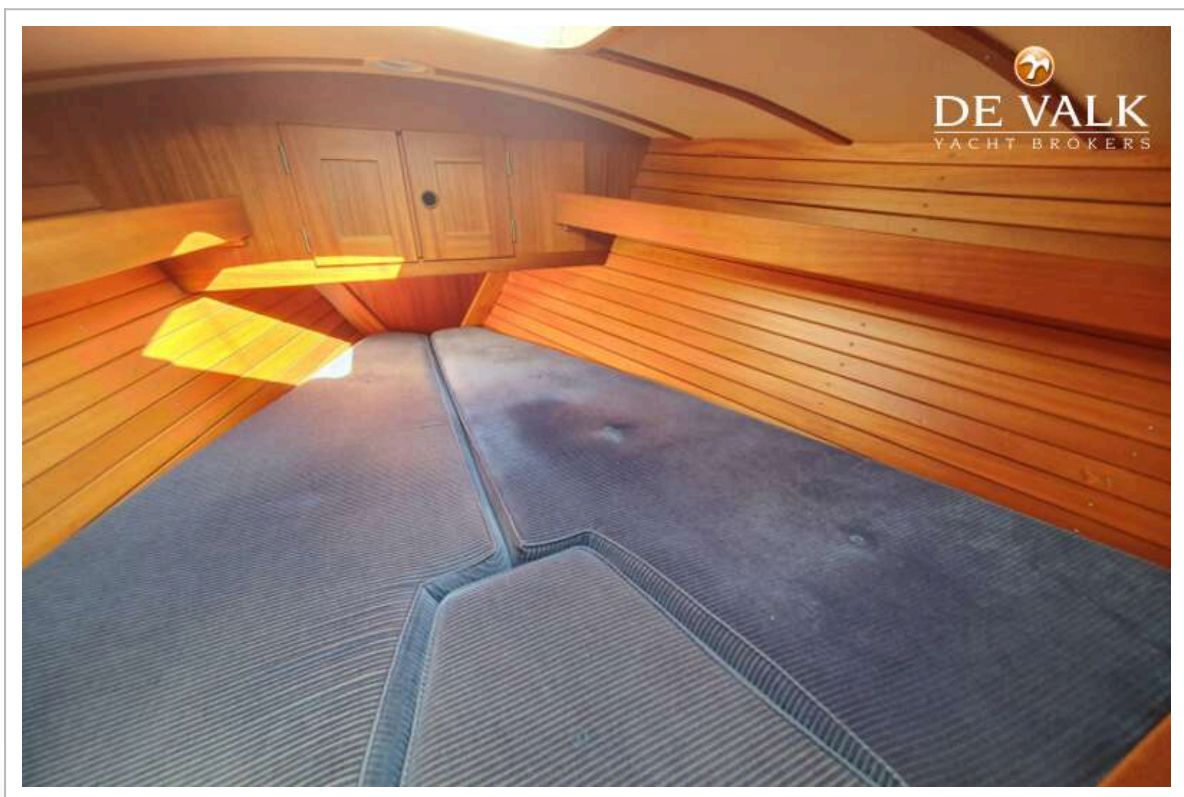
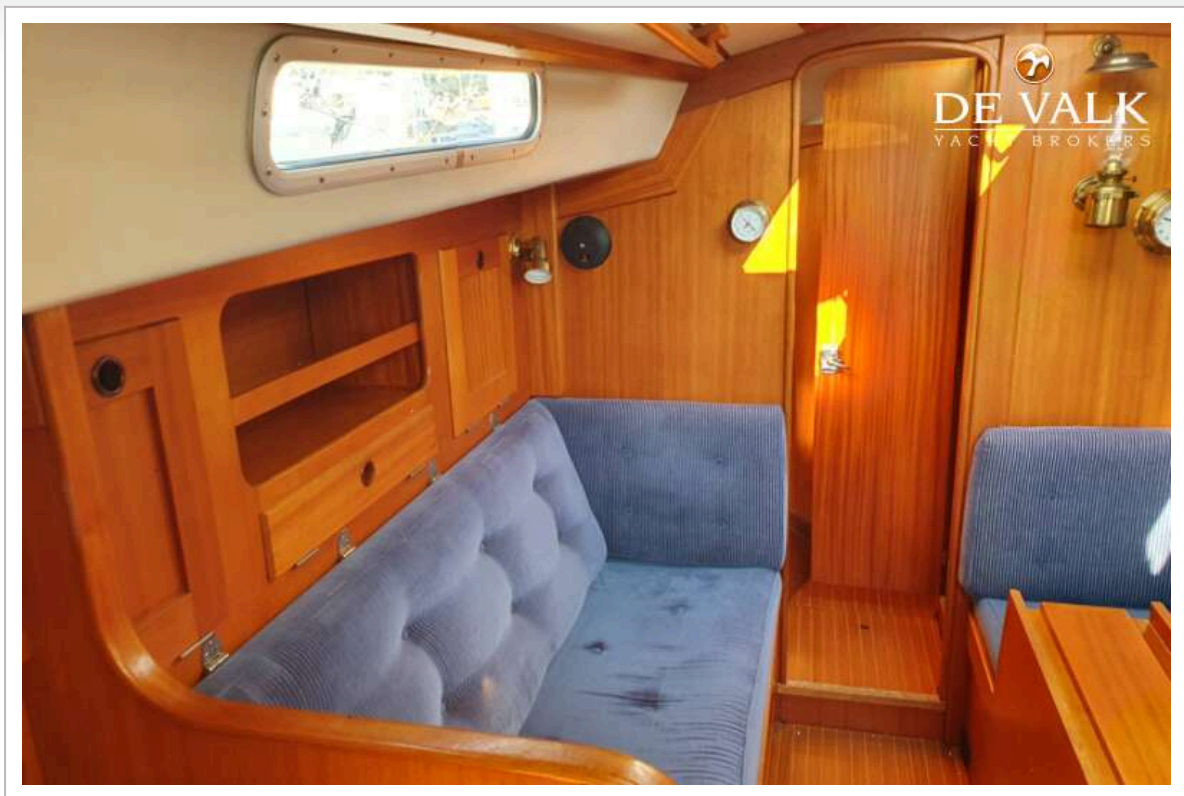
HALLBERG RASSY 312 MKII



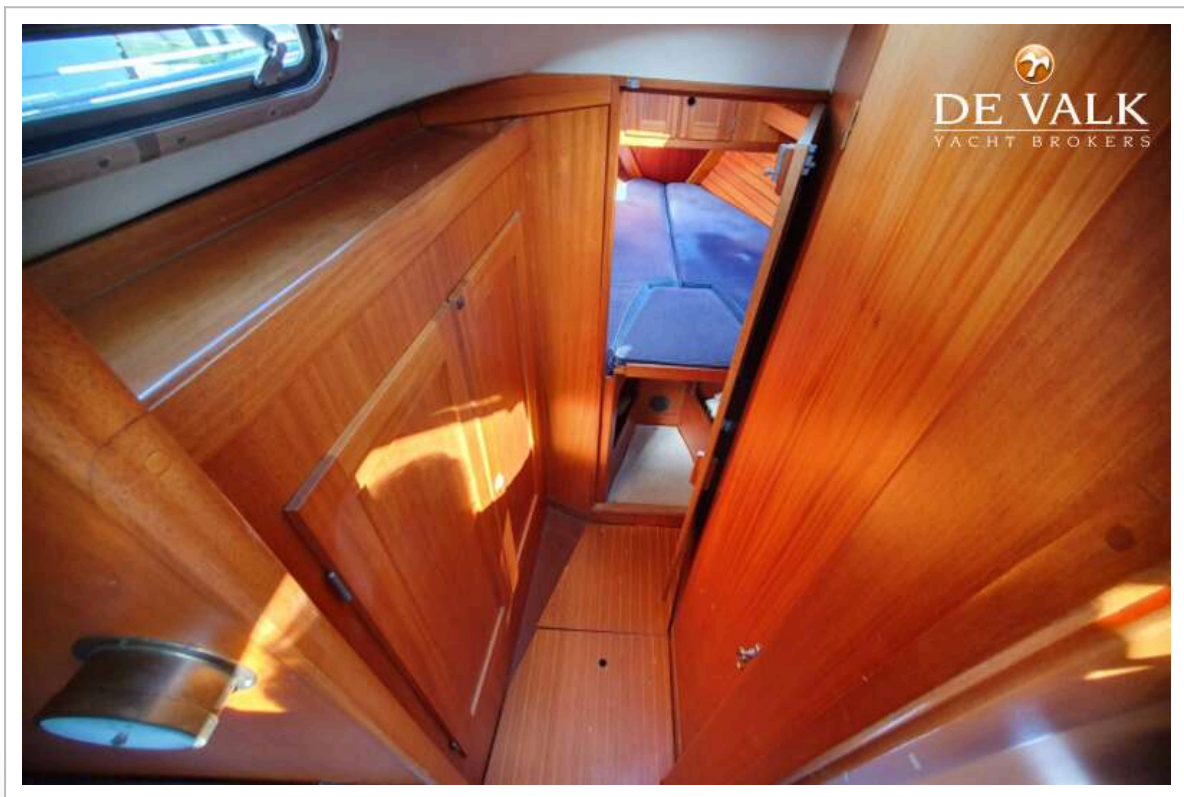
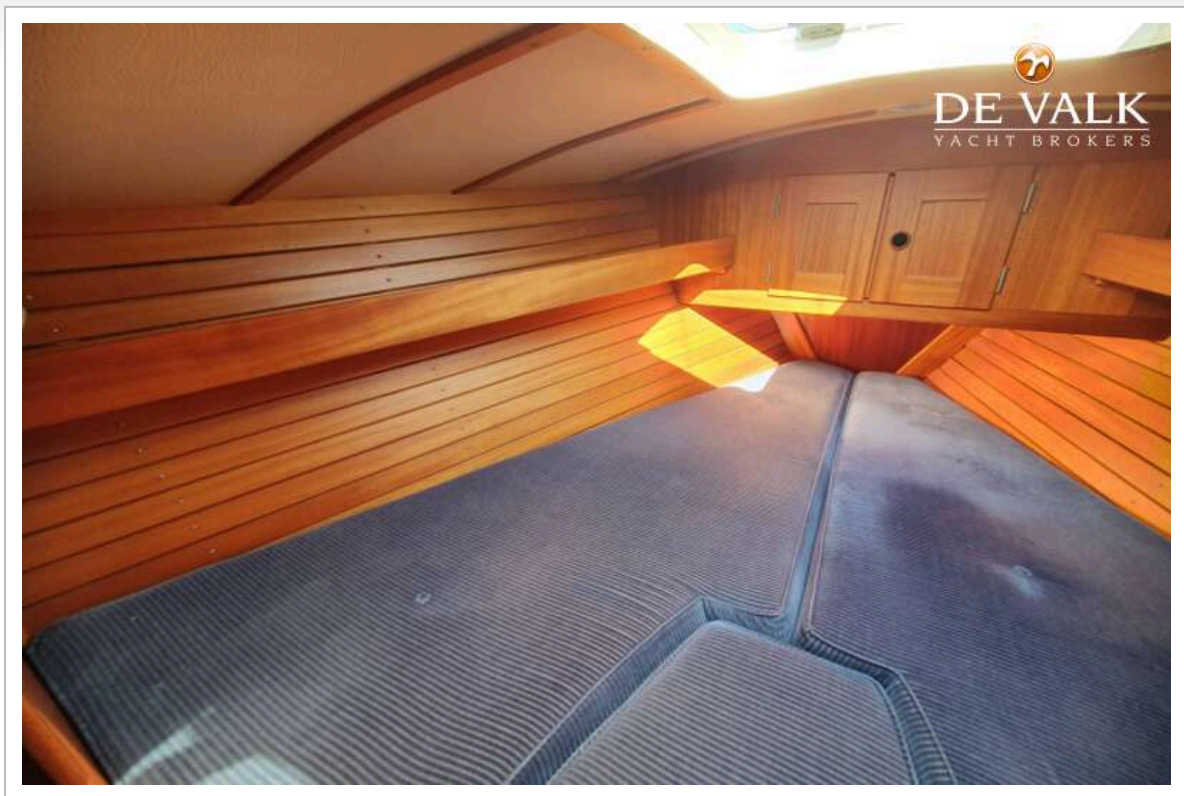
HALLBERG RASSY 312 MKII



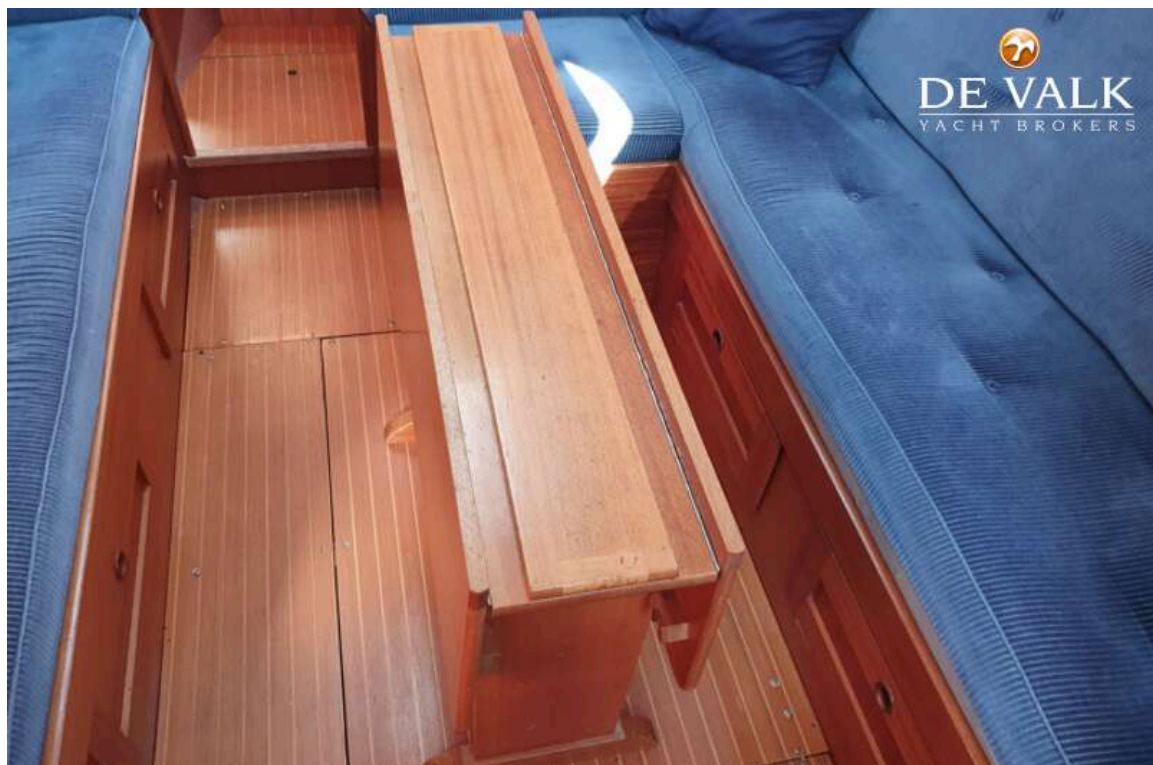
HALLBERG RASSY 312 MKII



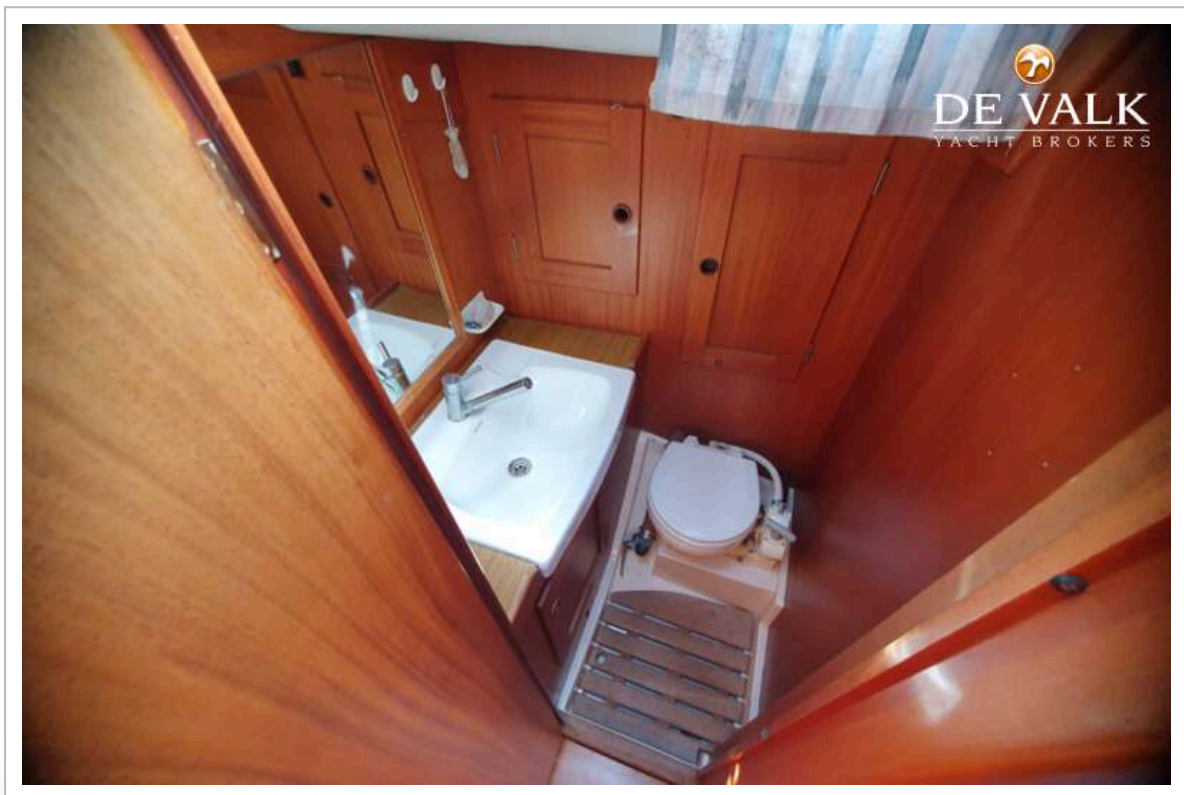
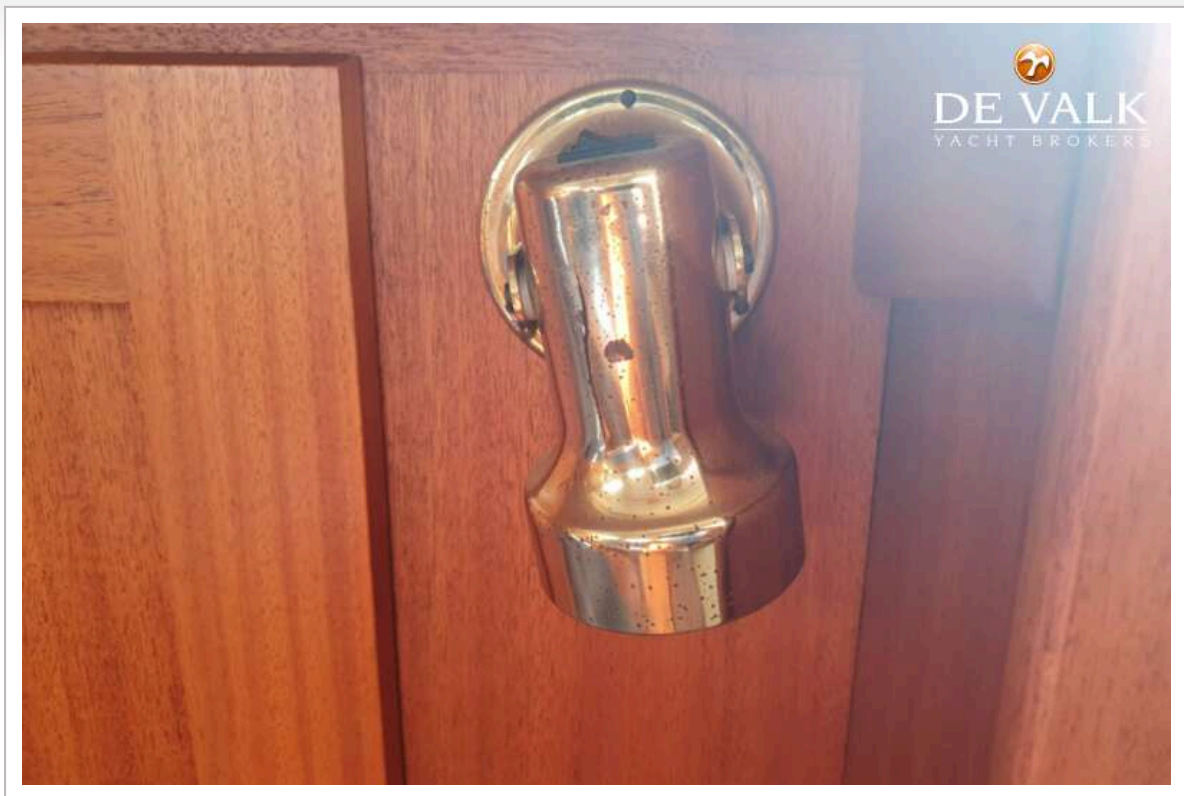
HALLBERG RASSY 312 MKII



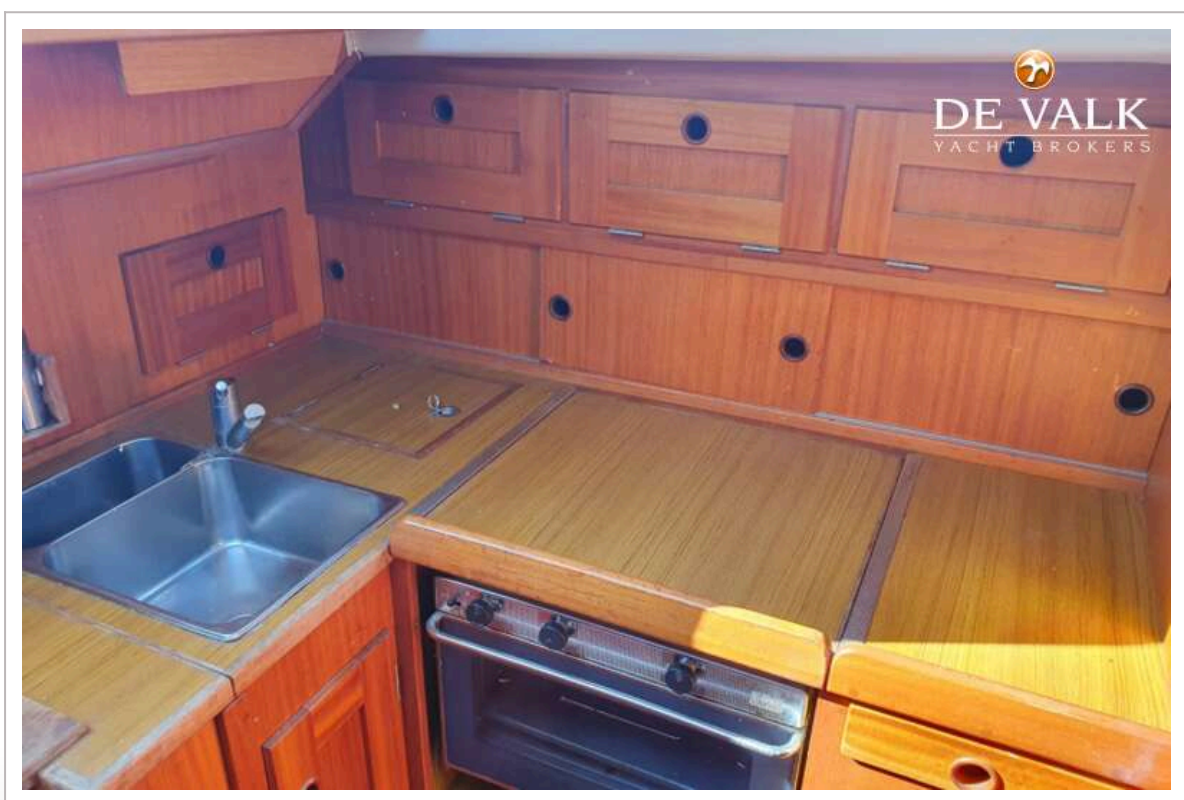
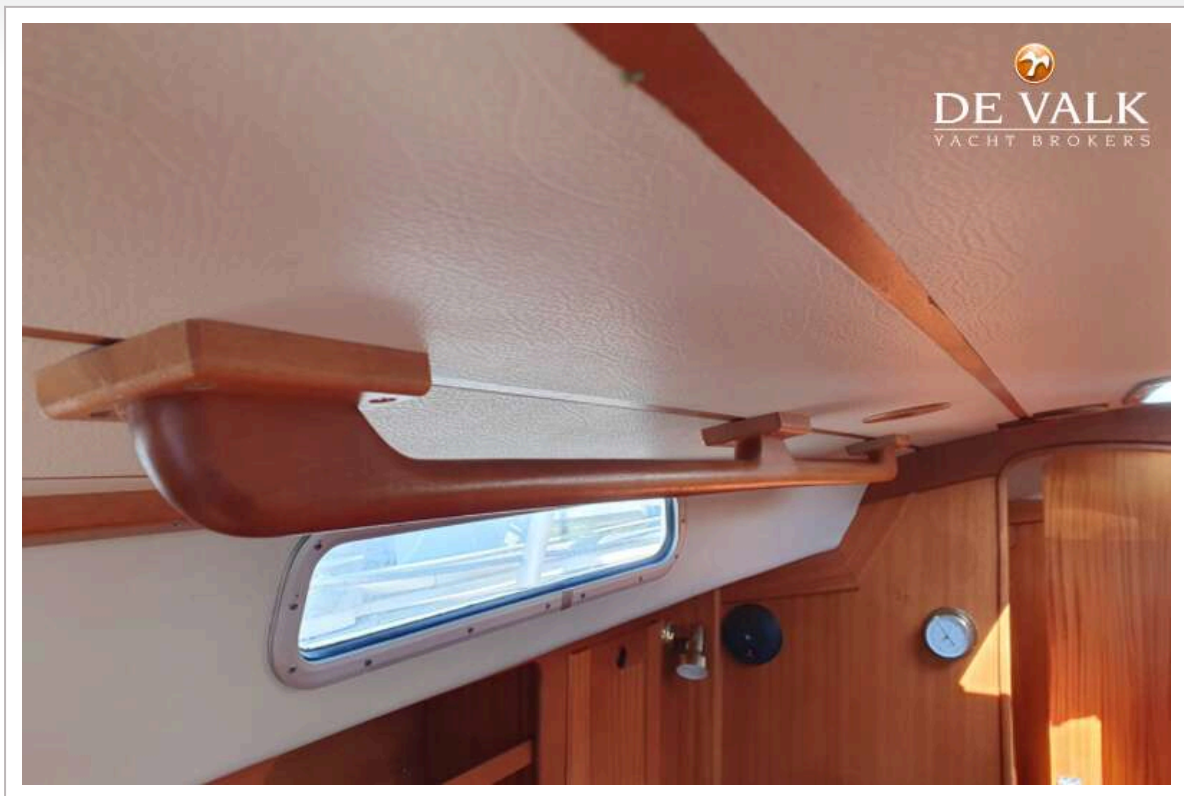
HALLBERG RASSY 312 MKII



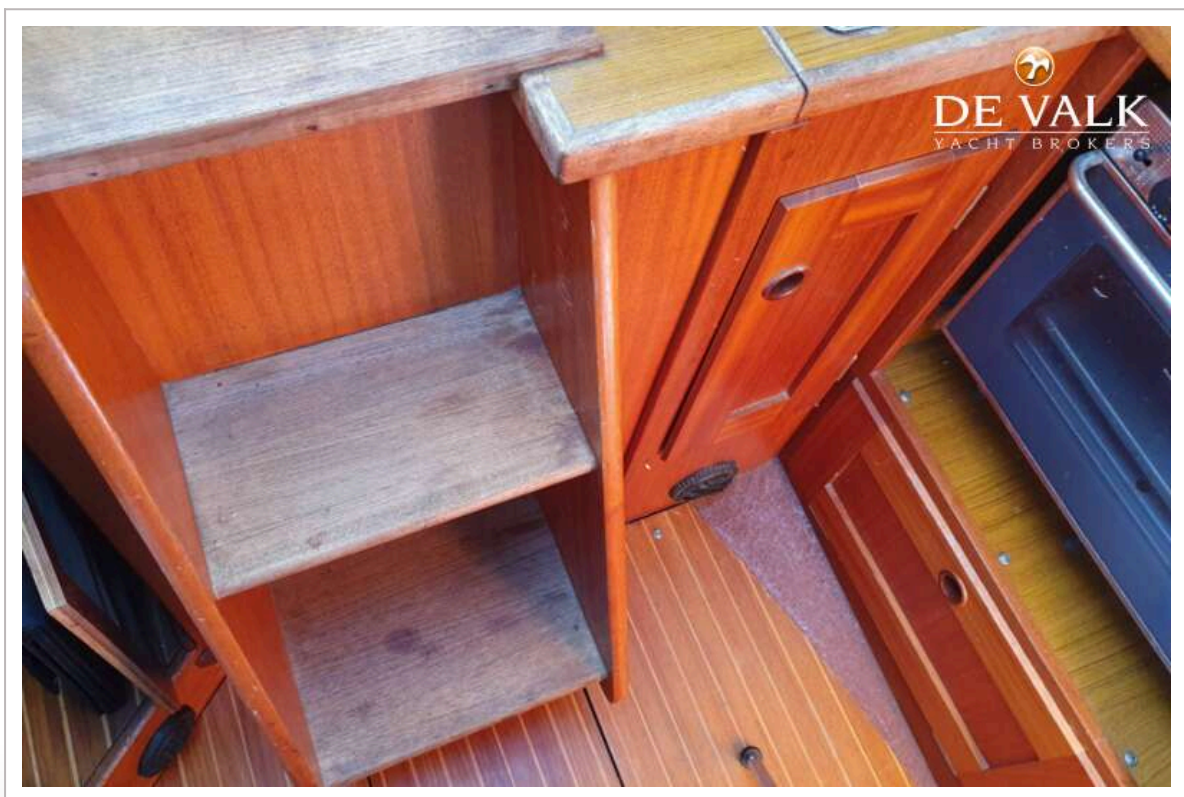
HALLBERG RASSY 312 MKII



HALLBERG RASSY 312 MKII



HALLBERG RASSY 312 MKII



HALLBERG RASSY 312 MKII



HALLBERG RASSY 312 MKII

