



DE VALK  
YACHT BROKERS



## JACABO 1700 ALLURE



DE VALK  
YACHT BROKERS

## BROKER'S COMMENTS

"MOONFLOWER is a true livaboard yacht that offers generosity and professional boatbuilding and equipment. Long term cruises are her purpose as well as weekends or holidays. She will be your floating home on all waters. Being nautical professional the owner has kept the yacht in well maintained state. You will find new Permateek, new central heater, new dishwasher etc. If your future life is supposed to take place on the water, a closer look is fairly recommended. Located in the south-east Netherlands."

*Jürgen Jacobs*

## SPECIFICATIONS

<b>Dimensions</b>	19,06 x 5,30 x 1,36 (m)	<b>Builder</b>	Jansen Yachtbouw
<b>Built</b>	1994	<b>Cabins</b>	4
<b>Material</b>	Steel	<b>Berths</b>	8
<b>Engine(s)</b>	2 x Iveco 8361-SRM 32 diesel	<b>Hp/Kw</b>	2 x 250 (hp), 184 (kw)
<b>Asking price</b>	EUR 275.000 (vat: paid)	<b>Lying</b>	contact sales office

## CONTACT

<b>Sales office</b>	De Valk Hamburg	<b>Telephone</b>	+49 40 46 000 999
<b>Address</b>	Alsterkamp 26 20149 Hamburg Germany	<b>Fax</b>	+31 355829019
		<b>E-mail</b>	hamburg@devalk.nl

## DISCLAIMER

These particulars are given in good faith as supplied but cannot be guaranteed and cannot be used for contracts.



# JACABO 1700 ALLURE

## GENERAL

<b>Model</b>	JACABO 1700 ALLURE
<b>Type</b>	motor yacht
<b>LOA (m)</b>	19,06
<b>LWL (m)</b>	18,66
<b>Beam (m)</b>	5,30
<b>Draft (m)</b>	1,36
<b>Air draft (m)</b>	7,40
<b>Air draft min (m)</b>	5,40
<b>Year built</b>	1994
<b>Builder</b>	Jansen Yachtbouw
<b>Country</b>	The Netherlands
<b>Displacement (t)</b>	48
<b>Hull material</b>	steel
<b>Hull colour</b>	white
<b>Superstructure material</b>	steel
<b>Rubbing strake</b>	steel
<b>Deck material</b>	Permateek (2019)
<b>Deck finish</b>	synthetic teak
<b>Cockpit deck finish</b>	synthetic teak Permateek
<b>Antifouling (year)</b>	2019
<b>Window frame</b>	aluminium Gebo
<b>Window material</b>	tempered glass
<b>Flybridge</b>	yes
<b>Flybridge cover</b>	yes
<b>Flybridge cockpit cover</b>	yes
<b>Radar arch</b>	collapsible hydraulic mechanism
<b>Mast can be lowered</b>	yes
<b>Fuel tank (litre)</b>	steel 2000
<b>Fuel tank 2 (litre)</b>	steel 2000
<b>Level indicator (fuel tank)</b>	yes



# JACABO 1700 ALLURE

<b>Freshwater tank (litre)</b>	steel 4000
<b>Level indicator (freshwater)</b>	yes
<b>Blackwater tank (litre)</b>	yes
<b>Level indicator (blackwater)</b>	yes
<b>Blackwater tank extraction</b>	yes
<b>Wheel steering</b>	yes
<b>Inside helm position</b>	yes
<b>Flybridge helm position</b>	hydraulic
<b>More info on paintwork</b>	Hull re-painted in 2018/19

## ACCOMMODATION

<b>Cabins</b>	4
<b>Berths</b>	8
<b>Crew cabin</b>	yes
<b>Interior</b>	mahogany
<b>Floor</b>	wood
<b>Aft deck</b>	yes
<b>Deck saloon</b>	yes
<b>Heating</b>	central hot water Kabola HR500combi, 20kW, new in 2022
<b>Air-conditioning</b>	yes
<b>Navigation center</b>	yes
<b>Chart table</b>	yes
<b>Aft Cabin</b>	yes
<b>Opening door to cockpit</b>	yes
<b>Galley</b>	yes
<b>Countertop</b>	corian
<b>Sink</b>	yes
<b>Cooker</b>	ceramic
<b>Oven</b>	yes
<b>Microwave/oven combi</b>	Whirlpool



# JACABO 1700 ALLURE

<b>Fridge</b>	yes
<b>Freezer</b>	1 large, 2 small
<b>Hot water system</b>	on central heating
<b>Water pressure system</b>	yes
<b>Dishwasher</b>	new in 2023 (unused so far)
<b>Owners cabin</b>	double bed
<b>Bed length (m)</b>	200cm x 170cm
<b>Bathroom</b>	separate
<b>Toilet</b>	separate
<b>Toilet system</b>	Regular water flush toilet
<b>Shower</b>	separate
<b>Bath tub</b>	separate Bath tub with integrated whirlpool function (jacuzzi)
<b>Jacuzzi</b>	yes
<b>Guest cabin 1</b>	double bed in bow
<b>Bed length (m)</b>	200cm
<b>Bathroom</b>	yes
<b>Toilet</b>	yes
<b>Toilet system</b>	Regular water flush toilet
<b>Shower</b>	yes
<b>Crew cabin(s)</b>	yes
<b>Washing machine</b>	Miele
<b>Dryer</b>	Miele
<b>Flybridge</b>	yes
<b>Extra info</b>	Outside Fridge / Freezer Combi on aft deck

## MACHINERY

<b>No of engines</b>	2
<b>Make</b>	Iveco
<b>Type</b>	8361-SRM 32
<b>HP</b>	250
<b>kW</b>	184



# JACABO 1700 ALLURE

<b>Fuel</b>	diesel
<b>Maximum speed (kn)</b>	11
<b>Cruising speed (kn)</b>	7-9
<b>Engine cooling system</b>	freshwater heat exchanger
<b>Drive</b>	shaft
<b>Engine controls</b>	electrical
<b>Bowthruster</b>	yes
<b>Propeller type</b>	fixed
<b>Propeller blades</b>	4
<b>Propeller shaft material</b>	stainless steel
<b>Electric bilge pump</b>	yes
<b>Electrical installation</b>	24 / 230 / 380 V
<b>Generator</b>	wet exhaust Mitsubishi 16 kW
<b>Batteries</b>	yes
<b>Start battery</b>	yes
<b>Generator battery</b>	yes
<b>Bowthruster battery</b>	yes
<b>Battery charger/inverter</b>	Victron Multiplus Phoenix 24 / 2000 / 50
<b>Shorepower</b>	yes
<b>Extra info</b>	protected propellers

## NAVIGATION

<b>Compass</b>	yes
<b>Electric compass</b>	yes
<b>Multi control display</b>	yes
<b>Depth sounder/log</b>	yes
<b>Log</b>	VDO
<b>Windset</b>	yes
<b>Repeater</b>	yes
<b>VHF</b>	2 x Raymarine 54E, 1 x Easy TRX, DSC / ATIS



# JACABO 1700 ALLURE

<b>Autopilot</b>	yes
<b>Rudder angle indicator</b>	yes
<b>Radar/GPS/plotter</b>	Raymarine E120 w/ camera function
<b>Electronic chart(s)</b>	yes
<b>AIS transceiver</b>	yes
<b>Camera</b>	yes
<b>Navigation lights</b>	yes
<b>Searchlight</b>	yes
<b>Extra info</b>	All navigational equipment and engine control by Radio Zeeland

## EQUIPMENT

<b>Cockpit cover</b>	yes
<b>Cockpit cushions</b>	yes
<b>Cockpit table</b>	yes
<b>Cockpit chairs</b>	yes
<b>Bathing platform</b>	yes
<b>Boarding ladder</b>	yes
<b>Transom door</b>	yes
<b>Gangway</b>	yes
<b>Deck shower</b>	yes
<b>Anchor</b>	yes
<b>Anchor chain</b>	yes
<b>Windlass</b>	electrical
<b>Dinghy</b>	rigid inflatable Valiant 450 w/ 40hp Mariner Outboard
<b>Deck crane</b>	hydraulic
<b>Sea railing</b>	steel
<b>Wiper</b>	yes
<b>Horn</b>	yes
<b>Fenders</b>	yes
<b>Mooring lines</b>	yes



# JACABO 1700 ALLURE

<b>Tools</b>	yes
<b>TV</b>	yes
<b>TracVision ball</b>	yes
<b>Radio-cd player</b>	yes
<b>Surround Sound System</b>	Bose sound system
<b>Clock - barometer</b>	Wempe
<b>Fire extinguisher</b>	yes
<b>Extinguisher in engine room</b>	yes





# JACABO 1700 ALLURE



# JACABO 1700 ALLURE

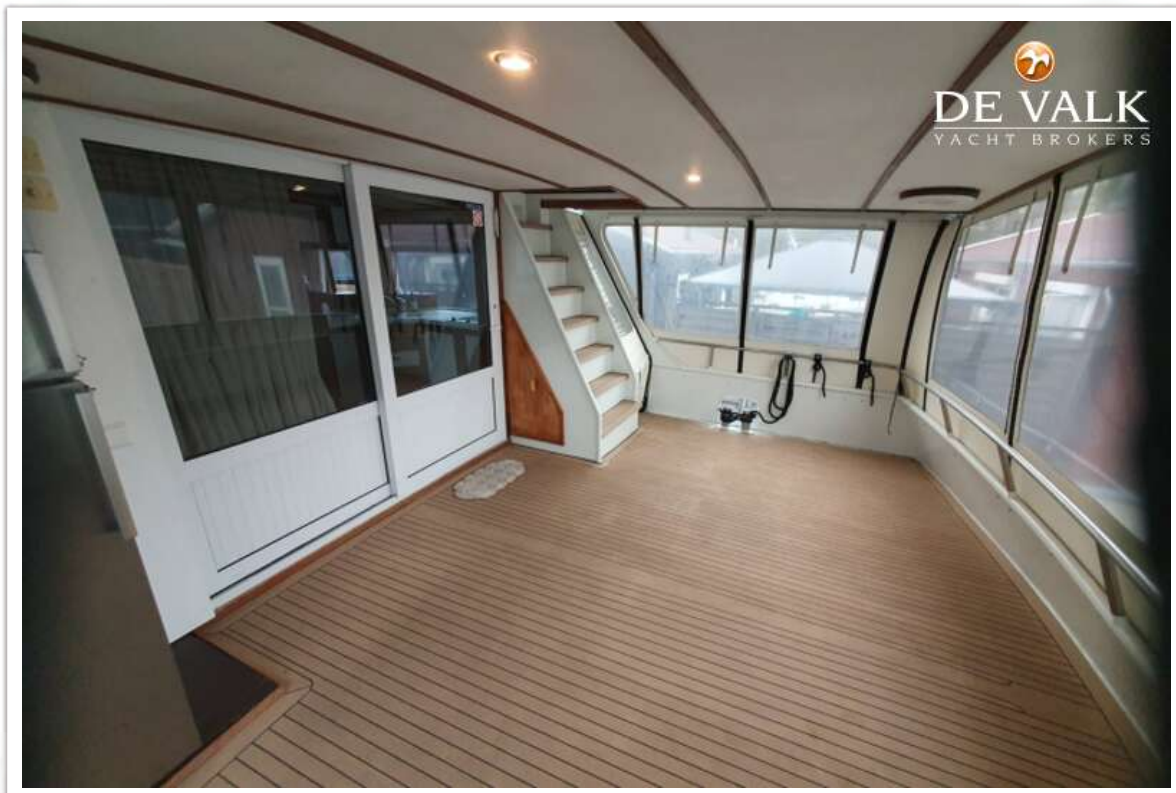


# JACABO 1700 ALLURE

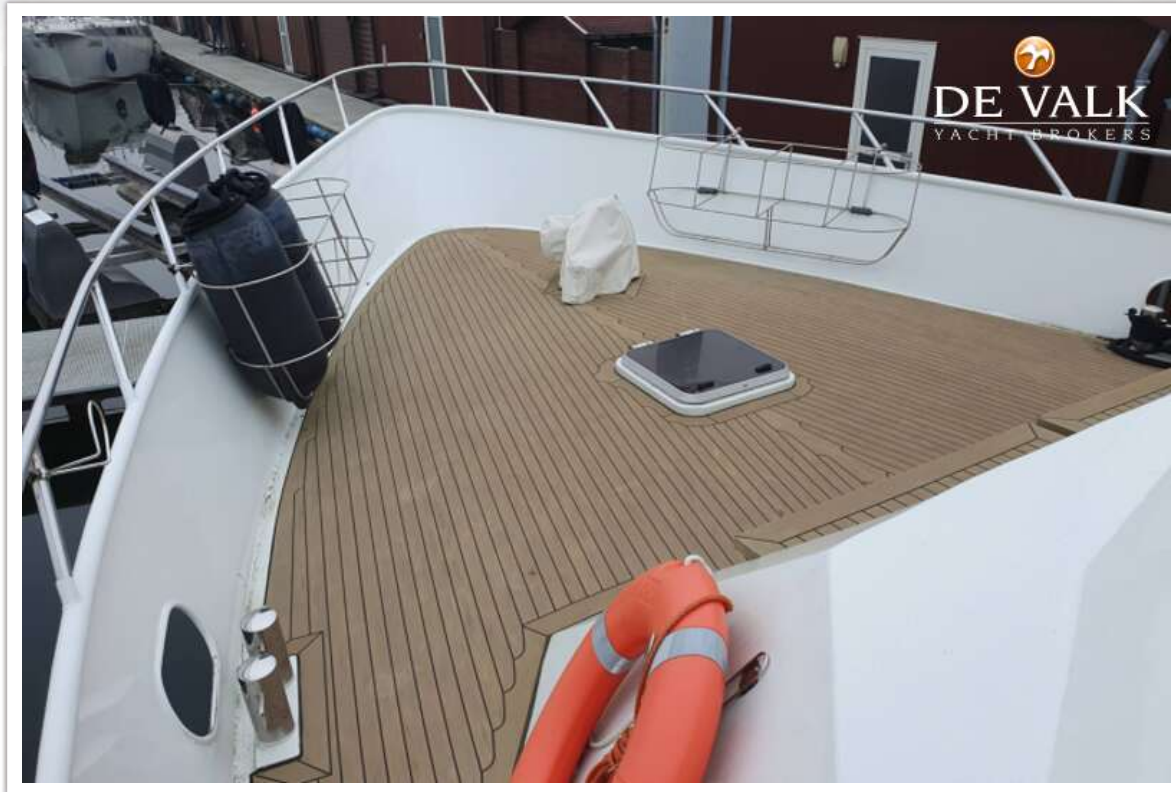




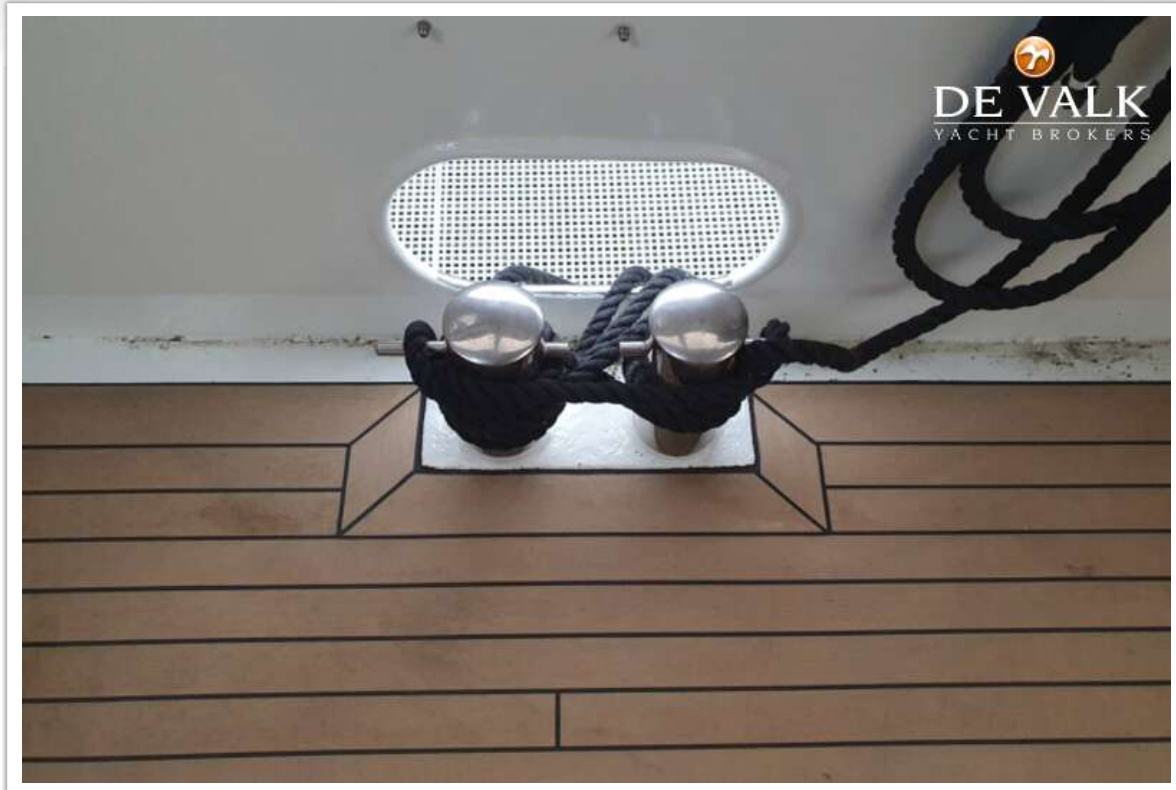
# JACABO 1700 ALLURE



# JACABO 1700 ALLURE



# JACABO 1700 ALLURE





# JACABO 1700 ALLURE



# JACABO 1700 ALLURE





# JACABO 1700 ALLURE



# JACABO 1700 ALLURE

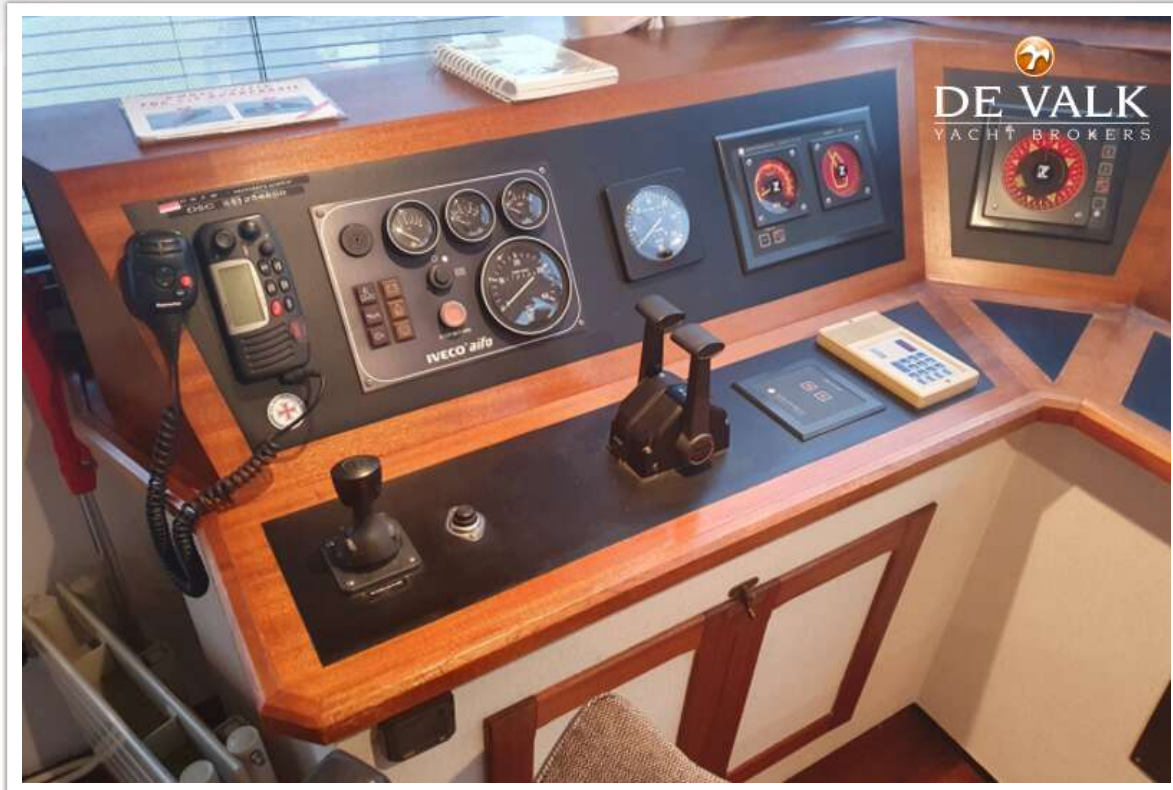




# JACABO 1700 ALLURE

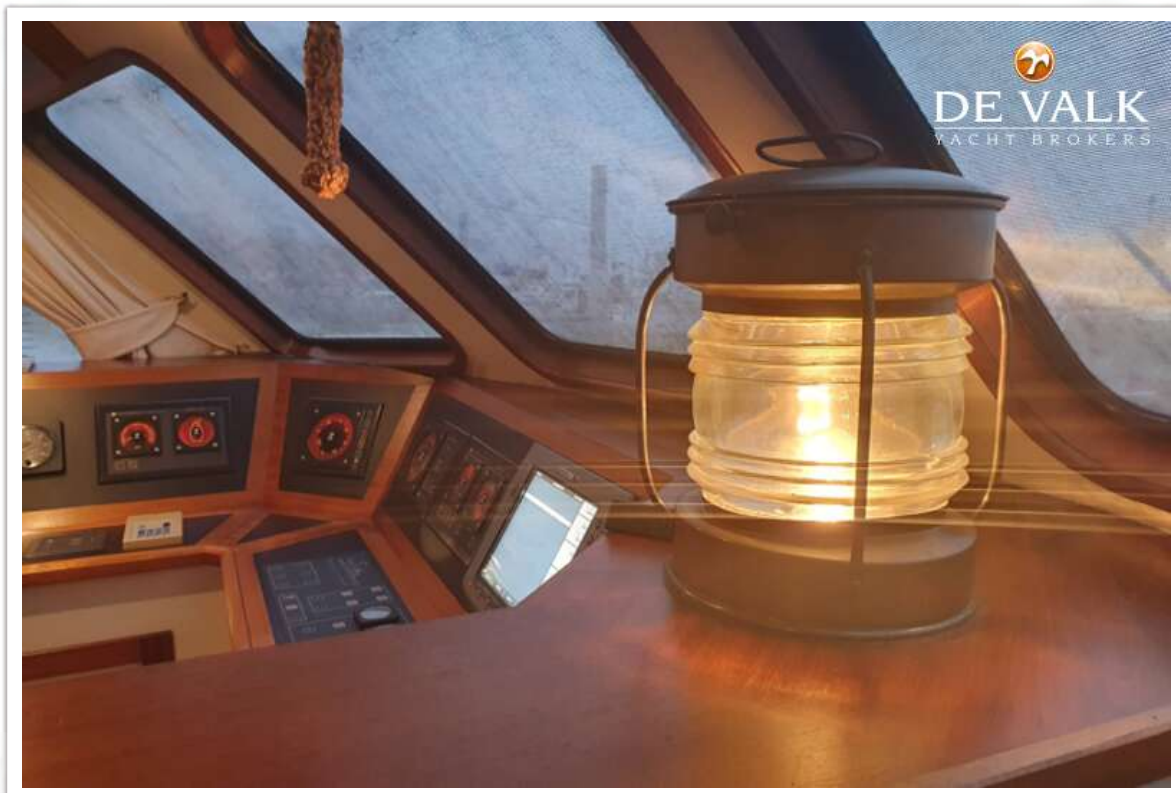


# JACABO 1700 ALLURE

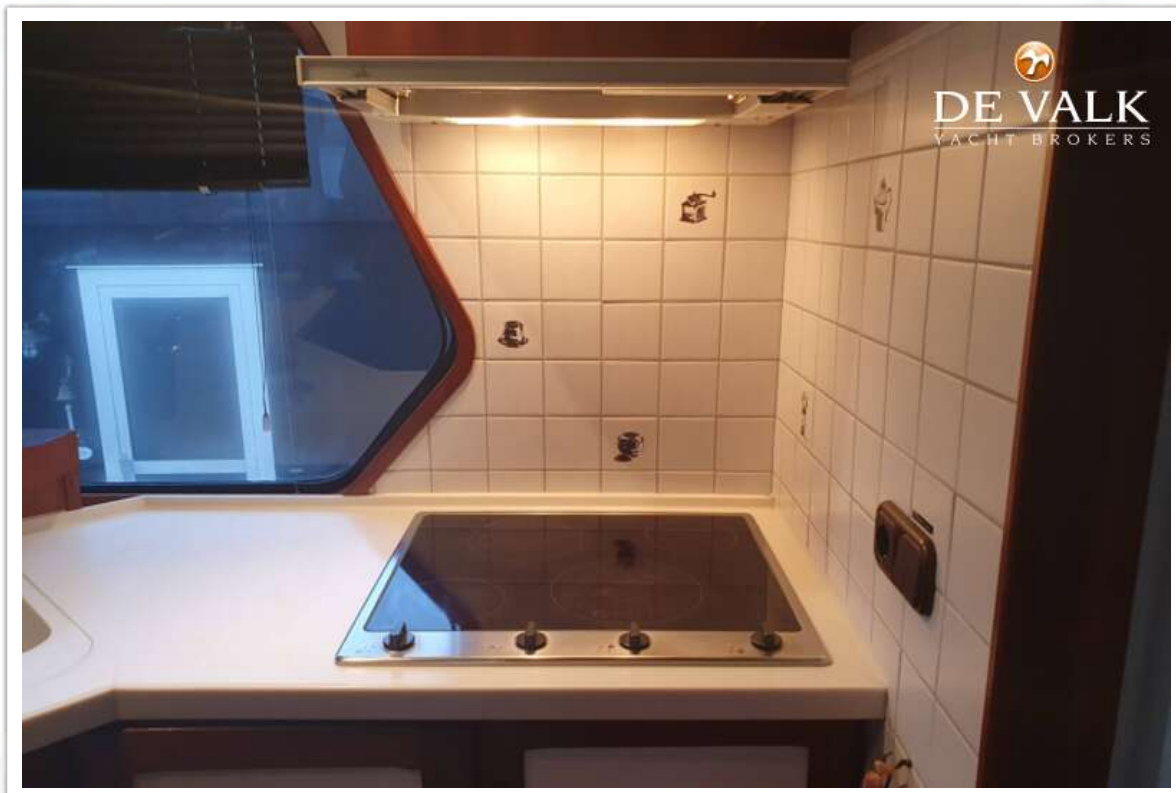
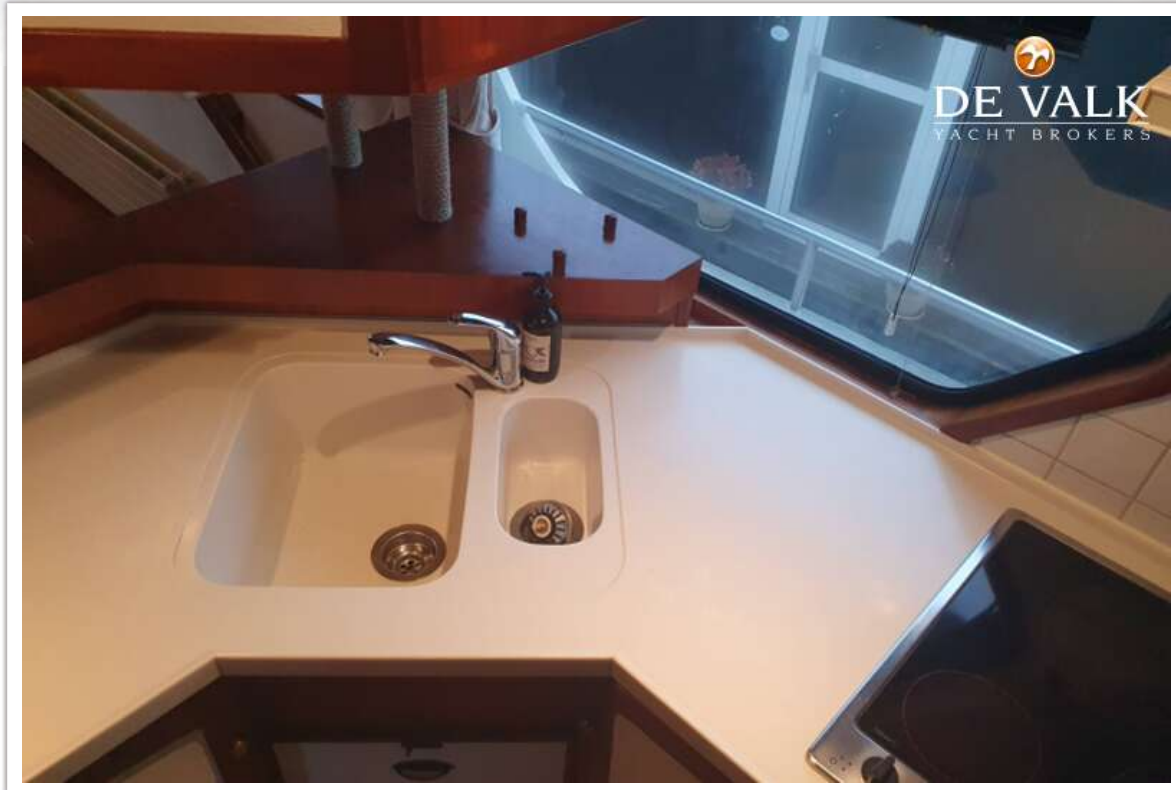




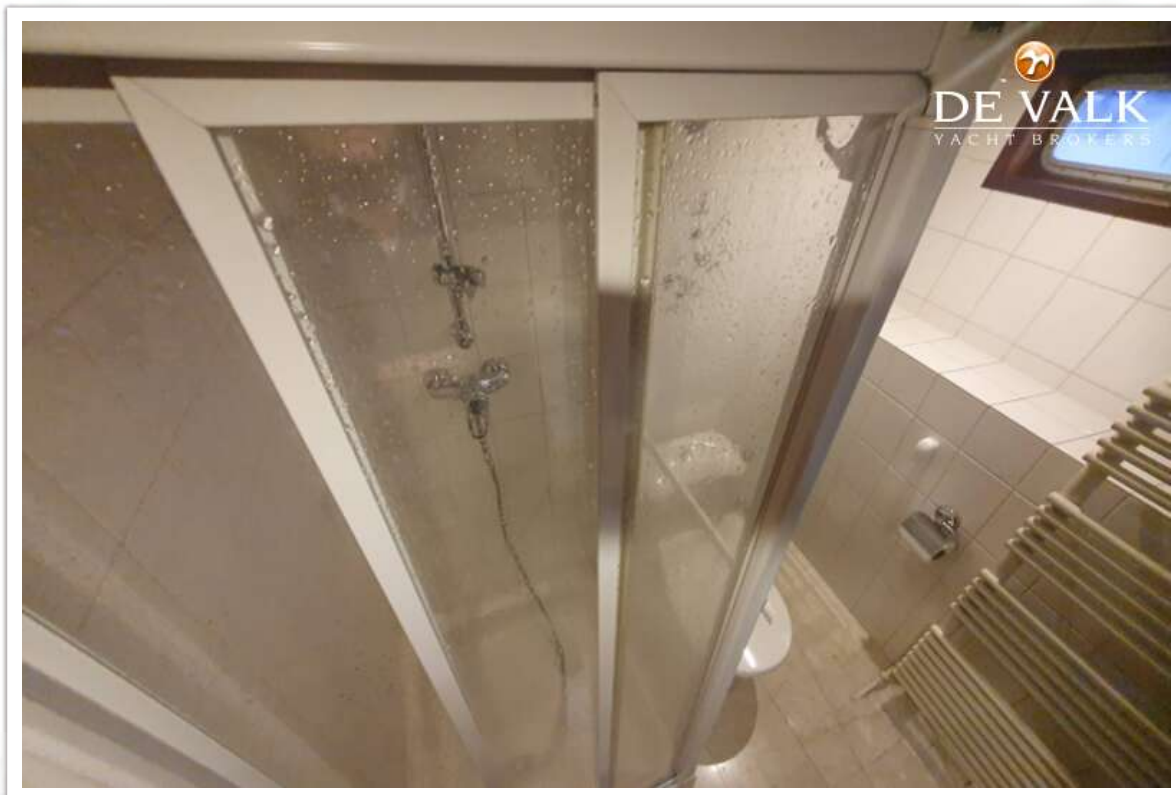
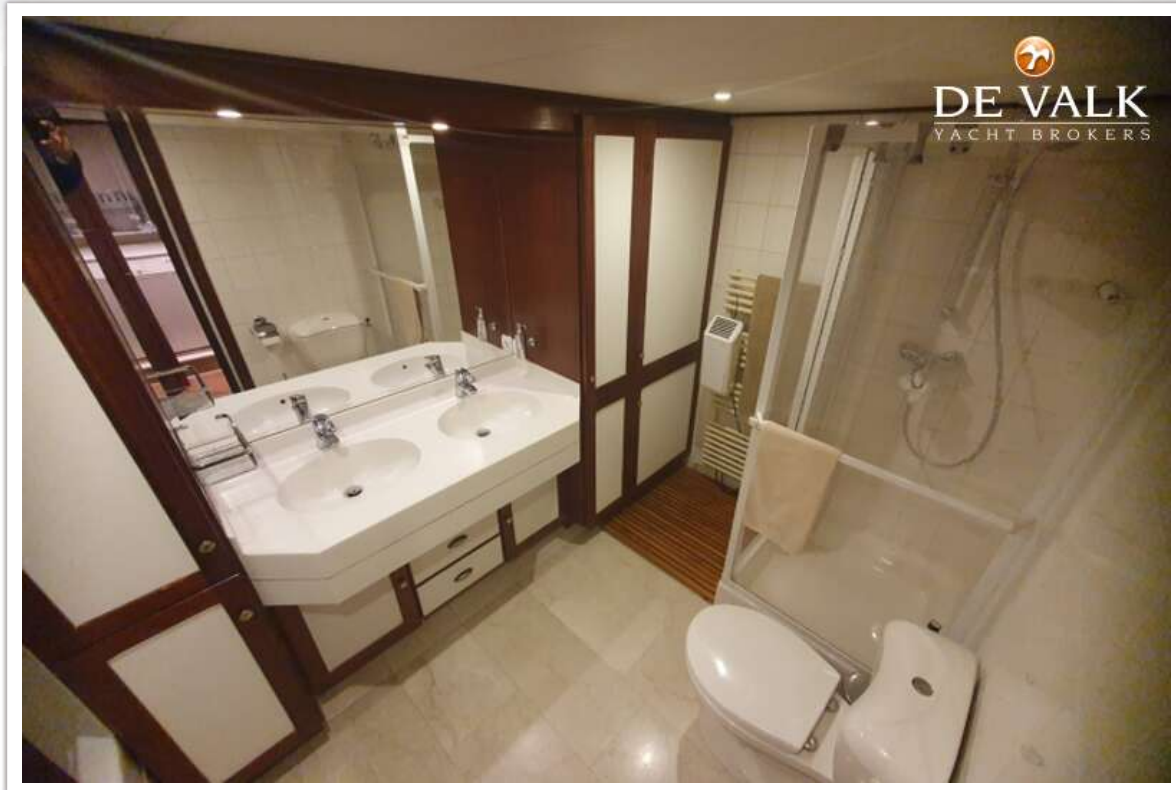
# JACABO 1700 ALLURE



# JACABO 1700 ALLURE

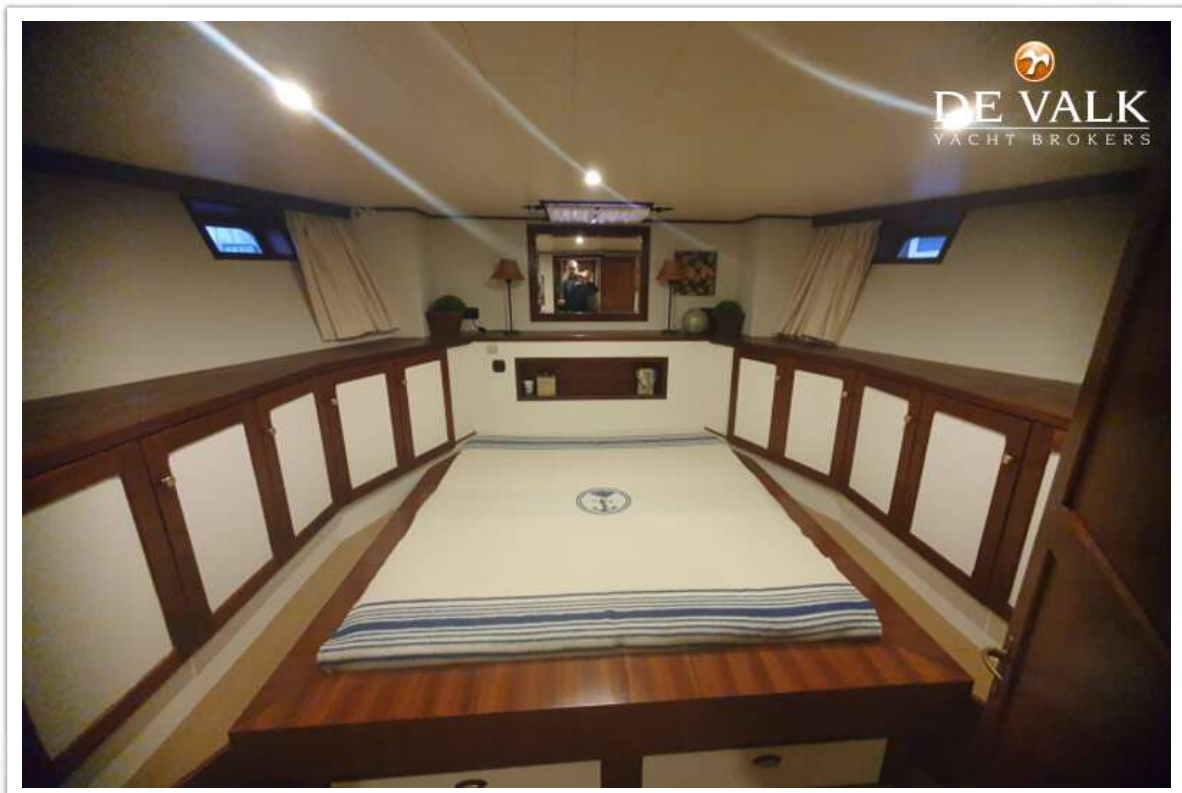
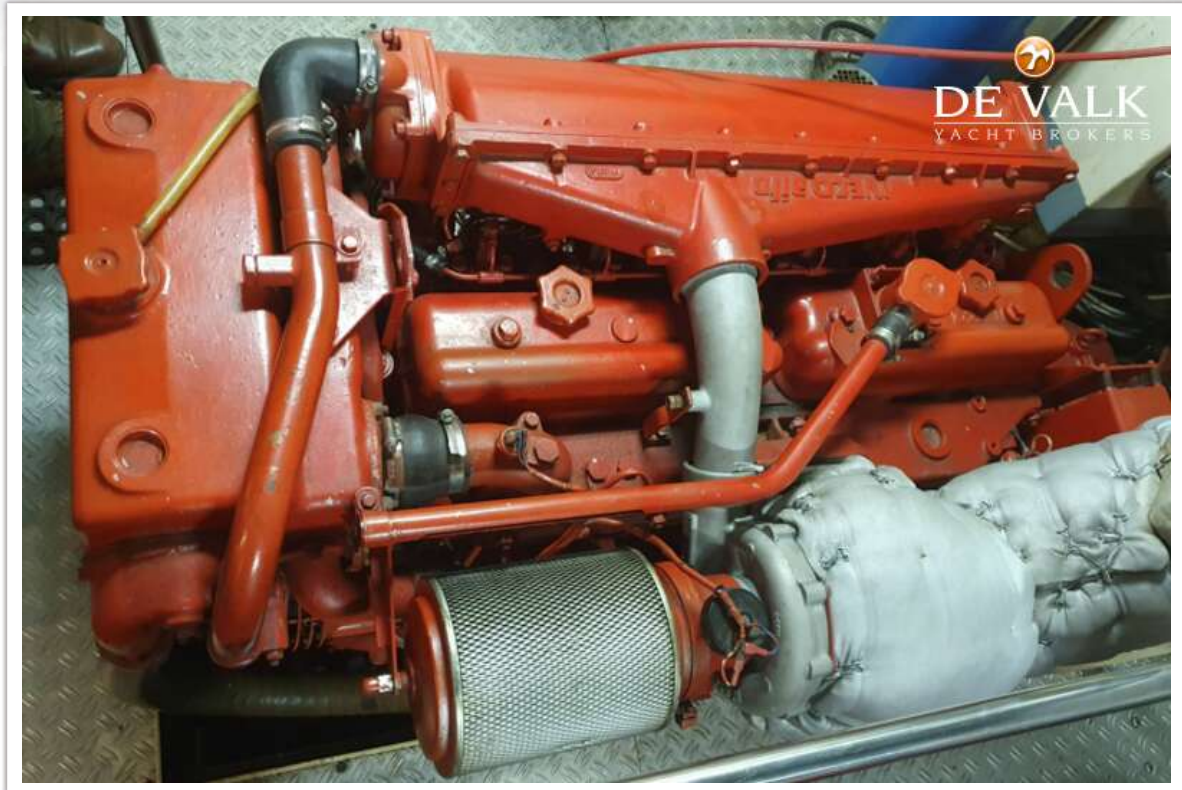


# JACABO 1700 ALLURE



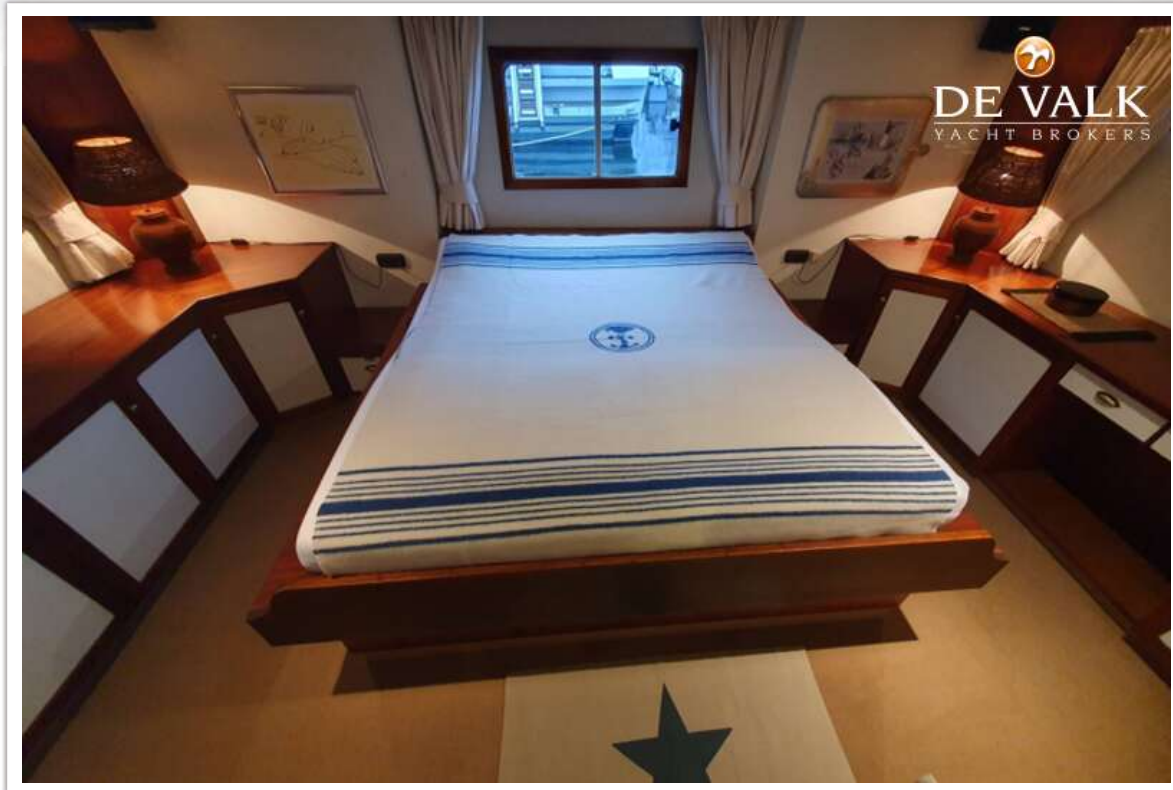


# JACABO 1700 ALLURE





# JACABO 1700 ALLURE



# JACABO 1700 ALLURE

