



DE VALK

VA 403 - LIGHT WEIGHT CRUISER/RACER



DE VALK
YACHT BROKERS

VA 403 - LIGHT WEIGHT CRUISER/RACER

BROKER'S COMMENTS

The VA 403 is a true gem in the sailing world. A unique and well-thought-out design by Yachtdesign v. Ahlen, built with great attention to detail by its owner. Its vacuum-built epoxy hull is both solid and lightweight, featuring a stylish, comfortable interior with two cabins. The VA 403 is exceptionally easy to sail and effortlessly outperforms comparable models from X-Yachts, Grand Soleil, Solaris, and Dehler-both in speed and build quality. A visit is absolutely worth it!

Jan-Ward van Dantzig

SPECIFICATIONS

Dimensions	12.22 x 3.80 x 2.20 (m)	Builder	Professional built in-house by the owner
Built	2014	Cabins	2
Material	GRP	Berths	6
Engine(s)	1 x Sole Mini 29 diesel	Hp/Kw	27.00 (hp), 19.87 (kw)
Asking price	€ 280.000 (VAT Paid)	Lying	at sales office

CONTACT

Sales office	De Valk Sint Annaland B.V.	Telephone	+31 (0)166 601 000
Address	Koelhuisweg 4 4697 RM Sint Annaland NL	E-mail	sintannaland@devalk.nl

DISCLAIMER

These particulars are given in good faith as supplied but cannot be guaranteed.



VA 403 - LIGHT WEIGHT CRUISER/RACER

GENERAL

Model	VA 403 - LIGHT WEIGHT CRUISER/RACER
Type	sailing yacht
LOA (m)	12,22
LWL (m)	11,00
Beam (m)	3,80
Draft (m)	2,20
Air draft (m)	18,40
Headroom (m)	1,90
Year built	2014
Launched	End of 2014 - rigged in 2017/2018
Builder	Professional built in-house by the owner
Country	Germany
Designer	Yachtdesign v. Ahlen (Marc-Oliver)
Displacement (t)	5,8
Ballast (tonnes)	lead 2,1 (In the Torpedo)
CE norm	NA
Hull material	GRP
Hull colour	white (International Paint) - polished in March/April 2025
Hull shape	round-bilged
Keel type	T-Keel (hollow stainless steel fin with a lead torpedo)
Superstructure material	epoxy and foam core Built with a vacuum process - polished in March/April 2025
Deck material	epoxy and foam core Built with a vacuum process
Deck finish	teak Vacuum applied. Completely recaulked in April/May 2025
Superstructure deck finish	paint White (Internal)
Cockpit deck finish	teak Vacuum applied
Antifouling (year)	May 2025
Window material	polycarbonate With white Ocean Air shades
Deckhatch	Manship hatches with Ocean Air screens & shades
Portholes	stainless steel Manship & Rudgersson & Lewmar
Insulation	Hull & deck build with foam core sandwich



VA 403 - LIGHT WEIGHT CRUISER/RACER

Fuel tank (litre)	polyethylene 110
Level indicator (fuel tank)	yes
Freshwater tank (litre)	polyethylene 2 x 125
Level indicator (freshwater)	yes
Wheel steering	rack & pinion Jefa white spray painted aluminium 5x double spoke steeringwheel
Emergency tiller	yes
More info on hull	<p>The molds used to make the hull were all CNC milled to ensure in a 100% fit. The entire hull & deck are built in Epoxy - Glass, using the vacuum process. The underwater hull is built with an Erex foam sandwich and the hull above the waterline is built with a heat resistant foam sandwich. The full hull (up to the hull/deck connection) is finished with a skin of Kevlar, using the vacuum process. This Kevlar skin was finished with not even 50 KG of epoxy filler to make it a smooth surface. Then the hull & Deck were painted with International epoxy paint in white. The hull is reinforced with a frame. The bottom stringers are homogeneously laminated in the hull. The deck-hull connection has also been laminated. The deepest point of the underwater hull is only 25 cm below the waterline.</p>
Extra info	<p>All bulkheads were laminated in three layers on both sides. Water tight collision bulkhead in both the bow and in the stern. Every bulkhead and all other parts of the interior carpentry facing the hull or the deck have been laminated to create a strong & stiff construction. All bulkheads and furniture are built in sandwich.</p>
Extra info	<p>Because all heavy weight (such as the water tanks and batteries) is mounted around the keel, the performance of the boat out on the sea is really great and the bow does not dive into the waves.</p>
Extra info	<p>The spade rudder blade is finished with a skin of Kevlar, using the vacuum process. This Kevlar skin was finished with and epoxy filler to make it a smooth surface. Jefa rudder shaft and bearings. The spots where the plastic through hull fittings are mounted are solid (so without the foam sandwich core). The sea cocks are also in plastic. Varnished parts on exterior are re-varnished in May 2025.</p>



VA 403 - LIGHT WEIGHT CRUISER/RACER

ACCOMMODATION

Cabins	2
Berths	6
Interior	teak Teak sandwich panels & white epoxy sandwich panels
Floor	teak and holly Re-varnished in April/May 2025
Open cockpit	yes
Saloon	Crème upholstery. Seats : 1,94 x 0,60 m & 2,45 x 0,65 m
Headroom saloon (m)	1,70 - 1,90
Heating	diesel ducted hot air Webasto (New in 2018)
Chart table	On Port Side (Built with teak sandwich panels)
Aft Cabin	1 x
Dinette	yes
Galley	On starboard side - Headroom : 1,84 m
Countertop	wood Teak sandwich panels & white epoxy sandwich panels
Sink	stainless steel 1 x (New in 2017)
Cooker	calor gas 2 Burner ENO (new in 2017)
Oven	ENO (new in 2017)
Fridge	Top loader with a TEC cold plate (New in 2016)
Hot water system	220V + engine 30 Litre boiler
Water pressure system	electrical
Coffee maker	Krubs, pulled-out from the kitchen cupboard
Owners cabin	v-bed In front cabin - Headroom : 1,84 m
Bed length (m)	2,00 x 1,80
Wardrobe	hanging and shelves
Bathroom	shared Headroom : 1,85 m
Toilet	shared
Toilet system	manual Jabsco with an electric fresh water flush pump (new in 2018)
Wash basin	in the bathroom
Shower	shared
Guest cabin 1	double bed In the aft cabin - Headroom : 1,65 - 1,70 m
Bed length (m)	2,00 x 1,50



VA 403 - LIGHT WEIGHT CRUISER/RACER

Wardrobe	hanging and shelves
Extra info	LED interior lighting
Extra info	10 mm Gezatex isolation along the walls in both cabins, covered with Alcantara. The owner didn't want to have doors at both cabins, but it is possible to have new doors constructed and installed

MACHINERY

No of engines	1
Make	Sole
Type	Mini 29
HP	27
kW	19.87
Fuel	diesel
Year installed	2013
Maximum speed (kn)	9
Cruising speed (kn)	8
Consumption (l/hr)	2,5
Engine hours	290
Engine cooling system	freshwater heat exchanger
Drive	sail-drive
Saildrive seal	(2013)
Engine controls	bowden cable (2013)
Exhaust	watercooled
Propeller type	folding Alpa Rugerini (2013)
Propeller blades	2
Manual bilge pump	(2013)
Electric bilge pump	(2014)
Electrical installation	12 & 220 Volt
Start battery	New in 2023 : 1 x 80 Ah AGM (with galvanized battery cables)
Service battery	New in 2023 : 2 x AGM 120 Ah (with galvanized battery cables)
Battery charger	Waeco (2013)



VA 403 - LIGHT WEIGHT CRUISER/RACER

Diode battery combiners	(2013)
Shorepower	with cable (2013)
Extra info	Several 220 Volt sockets throughout the interior

NAVIGATION

Compass	1 x (New in 2023)
Depth sounder/log	Raymarine (New in 2019)
Windset	Raymarine (New in 2019)
Repeater	Raymarine (New in 2019)
VHF	Raymarine (New in 2019)
Autopilot	Raymarine (New in 2020, installed in 2024)
Rudder angle indicator	Raymarine (New in 2020, installed in 2024)
Plotter/GPS	Raymarine (New in 2019)
Electronic chart(s)	(New in 2019)
Navigation lights	New in 2018 : LED
Extra info	Luxury leather covered stainless steel reading light at the chard table

EQUIPMENT

Sprayhood	2 x Blue (2023 & older)
Cockpit cover	2 x Blue (2023 & older)
Cockpit table	Removable varnished teak sandwich with folding side panels (2016)
Bathing platform	Open stern
Boarding ladder	stainless steel
Deck shower	Hot & cold water (new in 2023)
Anchor	1 x Folding anchor with a (load weighted) rope
Sea railing	wire Double wired stainless steel
Grab rail (superstructure)	teak
Railing side opening gates	On both sides
Pushpit	Stainless steel



VA 403 - LIGHT WEIGHT CRUISER/RACER

Pulpit	Stainless steel
Lifebuoy	yes
Radar reflector	yes
Fenders	yes
Mooring lines	yes
Fire extinguisher	1 x (New in 2023)
Extra info	All drawings and laminate plans are available also.
Extra info	Dyson vacuum cleaner
Extra info	yes

RIGGING

Rigging	fractional with backstays 19/20
Standing rigging	Rod With closed tentioners
Brand mast	Seldén With a Selden Racing boom (all new in 2017)
Material mast	aluminium
Spreaders	3 x Set of spreaders
Keel stepped mast	yes
Mainsail	Kevlar (light) Ullman (new in 2018)
Mainsail cover	Dark blue & a small Lazy-Bag with Lazy-Jacks (all new in 2018)
Fully battened mainsail	Carbon/Kevlar Segelwerkstatt Stade (new in 2022 - used 20 x)
Jib	1 x Carbon/Kevlar Segelwerkstatt Stade (new in 2022 - 20 x used)
Jib I	1 x Kevlar (light) Ullman (new in 2018)
Jib II	1 x Tri-Radial Soft Norlam North Sails Jib (2017)
Genoa furler	Furlex TD300 (mounted through deck)
Spinnaker	Blister with a snuffer (2009)
Stormjib	1 x Laminated (heavy) Ullman (new in 2018 - never used)
Reefing System	quick-one-line-reefing
Backstay adjuster	tackle
Boomvang	gasspring Rodkicker (New in 2018)
Primary sheet winch	2 x Andersson 40ST



VA 403 - LIGHT WEIGHT CRUISER/RACER

Genoa sheetwinches	2 x Andersson 48ST
Halyard winches	2 x Andersson 40ST
Spi-pole	carbon (Boat is partly prepared with spinnaker gear - so not complete)
Extra info	Dyneema hallyards (2017)
Extra info	Harken & Selden ball bearing blocks.



VA 403 - LIGHT WEIGHT CRUISER/RACER



VA 403 - LIGHT WEIGHT CRUISER/RACER



VA 403 - LIGHT WEIGHT CRUISER/RACER



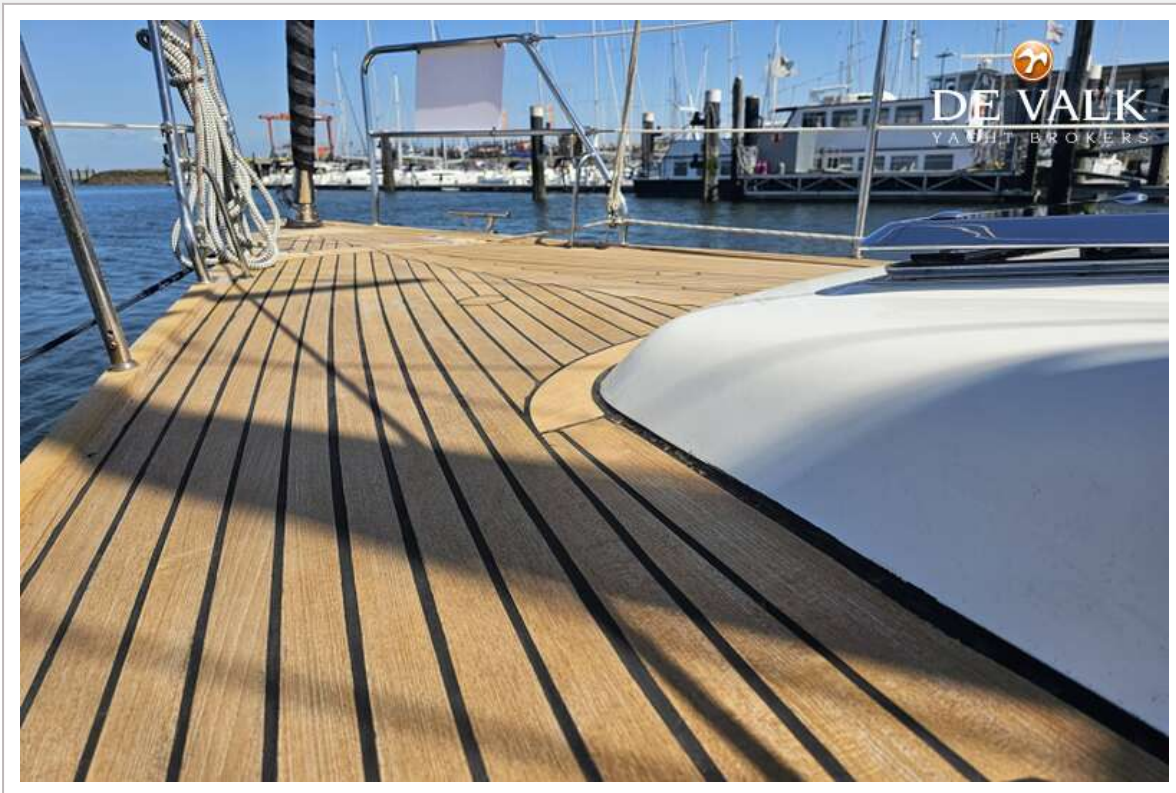
VA 403 - LIGHT WEIGHT CRUISER/RACER



VA 403 - LIGHT WEIGHT CRUISER/RACER



VA 403 - LIGHT WEIGHT CRUISER/RACER



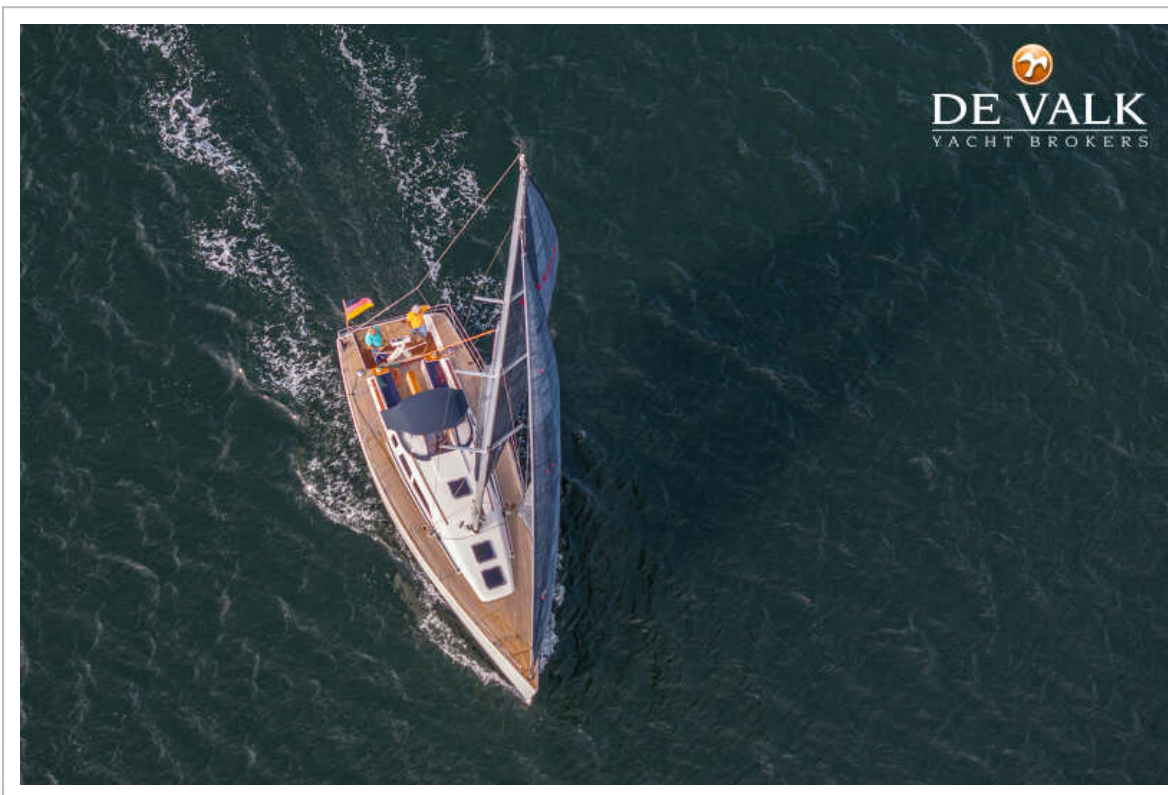
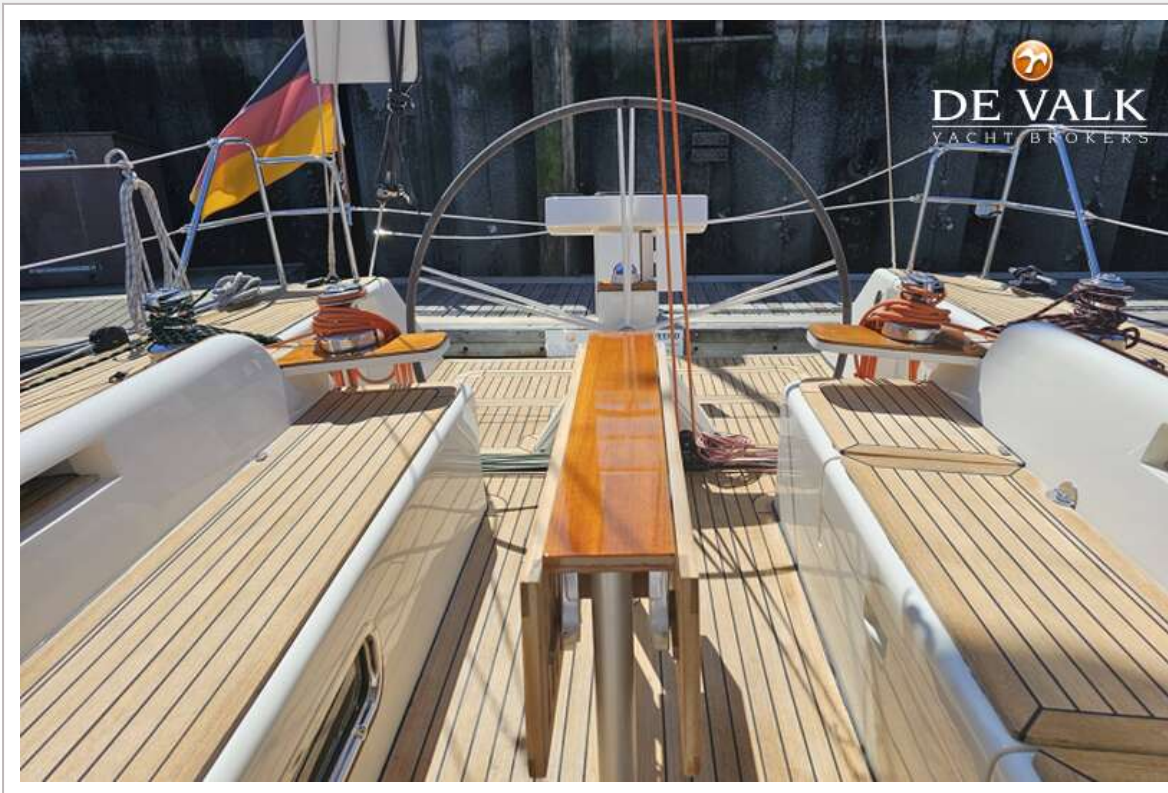
VA 403 - LIGHT WEIGHT CRUISER/RACER



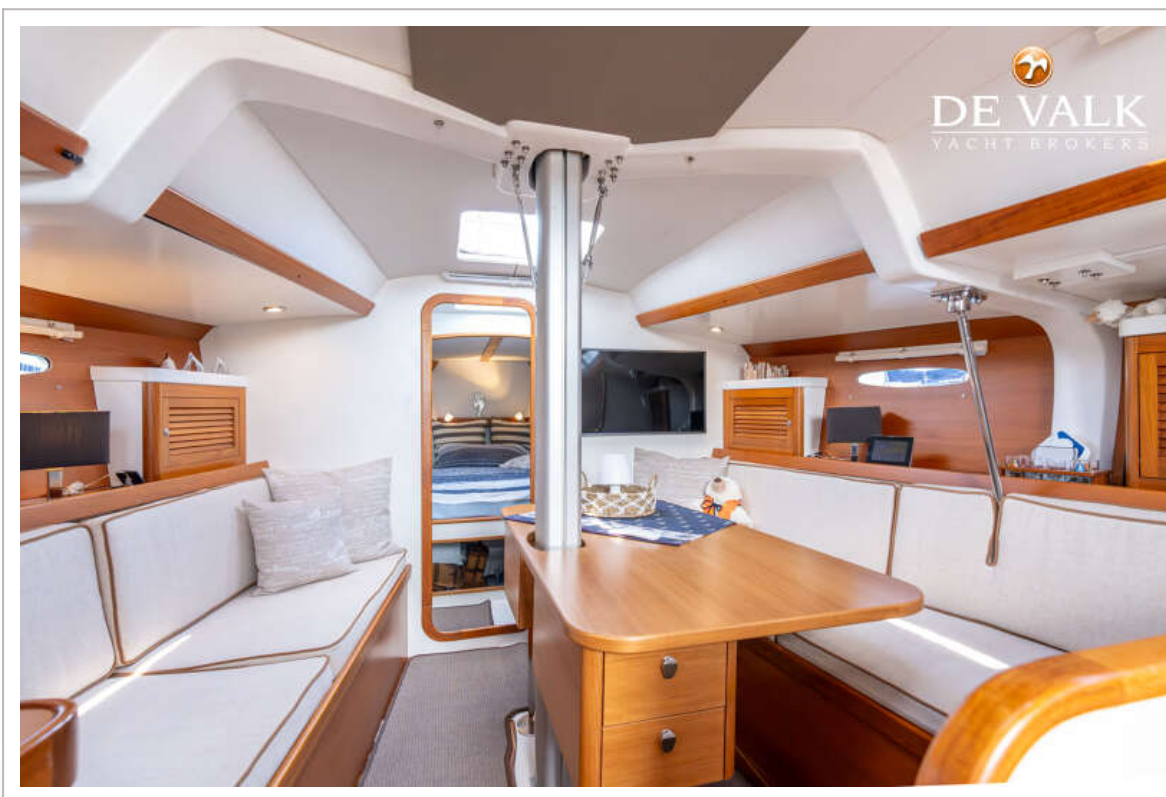
VA 403 - LIGHT WEIGHT CRUISER/RACER



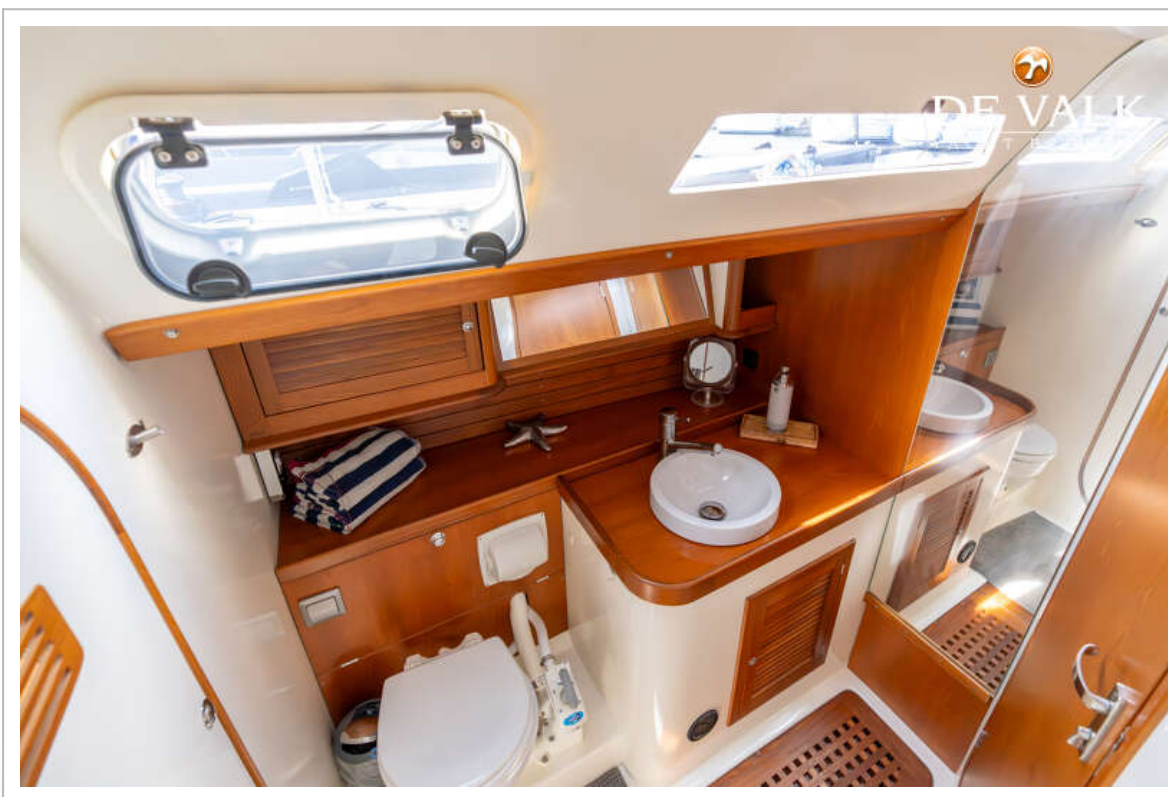
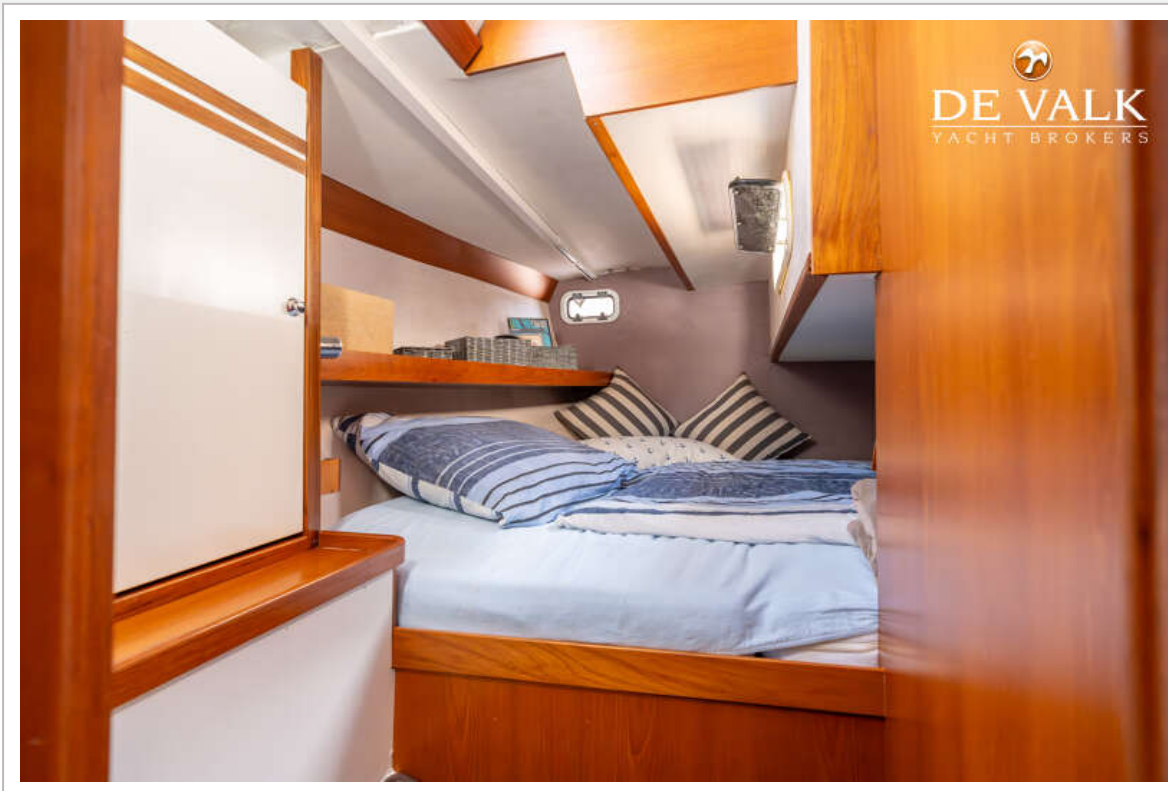
VA 403 - LIGHT WEIGHT CRUISER/RACER



VA 403 - LIGHT WEIGHT CRUISER/RACER



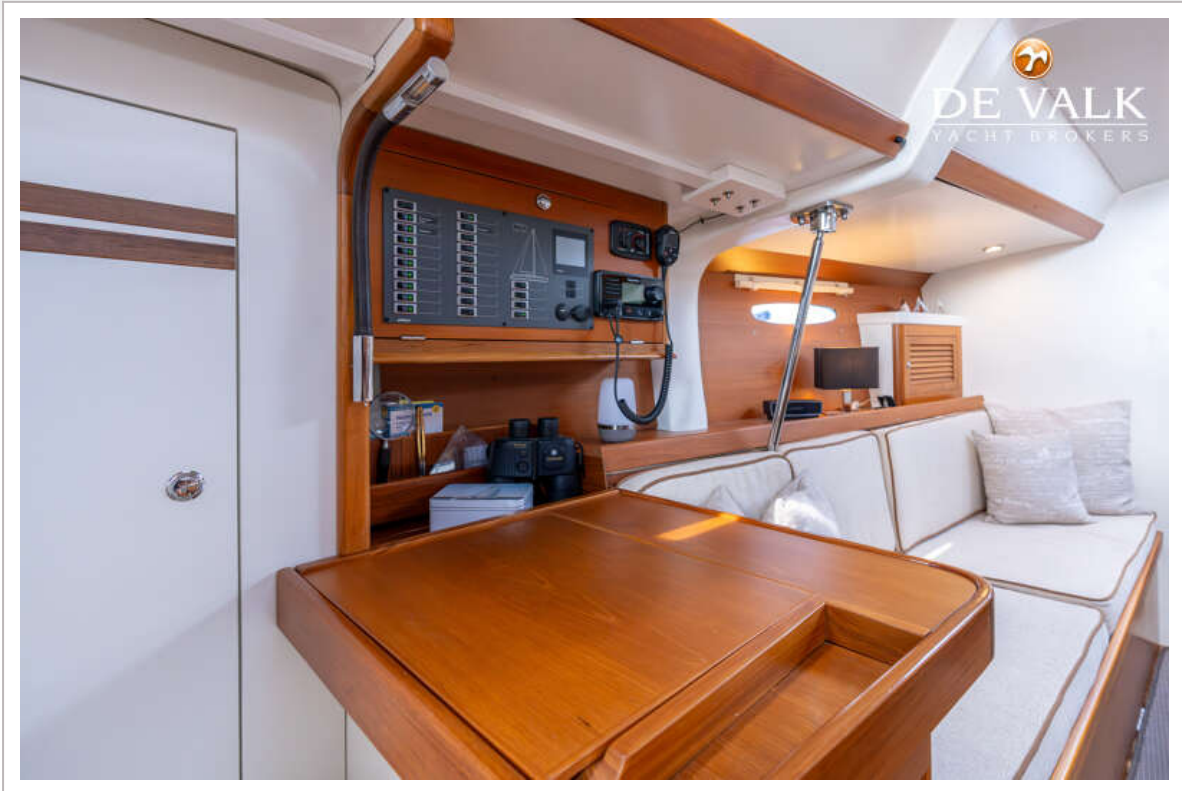
VA 403 - LIGHT WEIGHT CRUISER/RACER



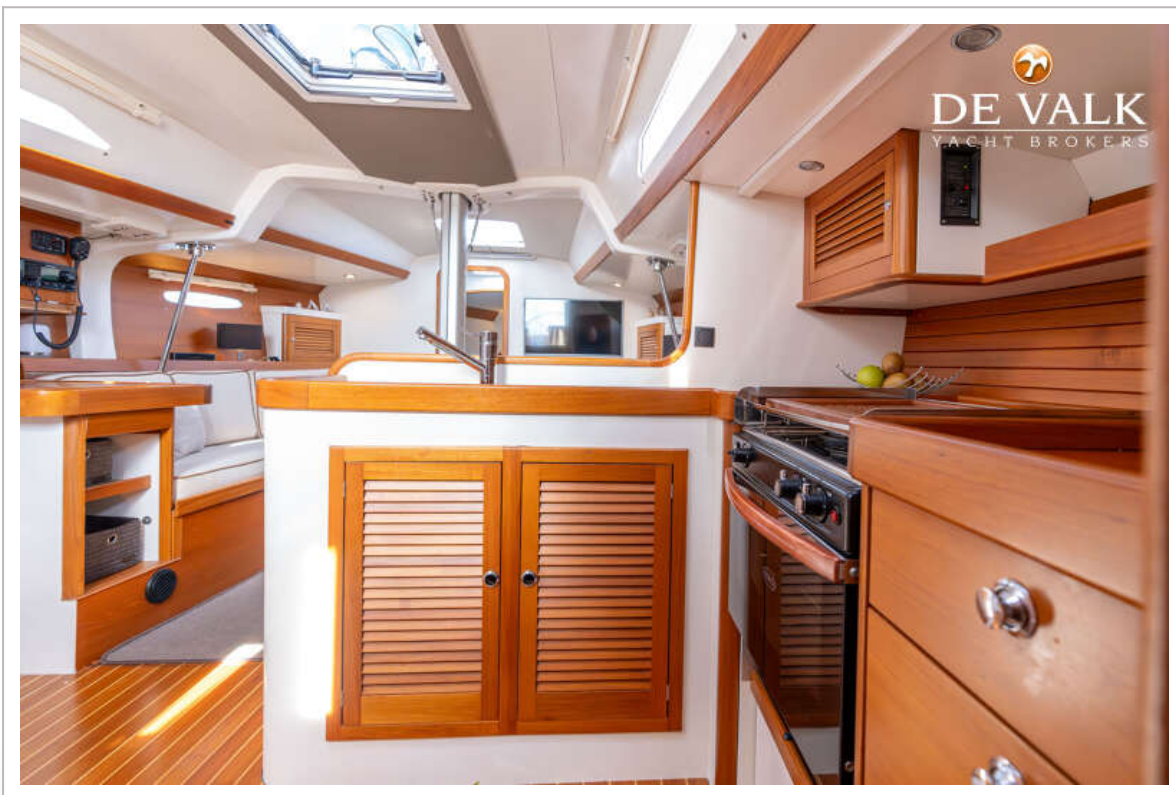
VA 403 - LIGHT WEIGHT CRUISER/RACER



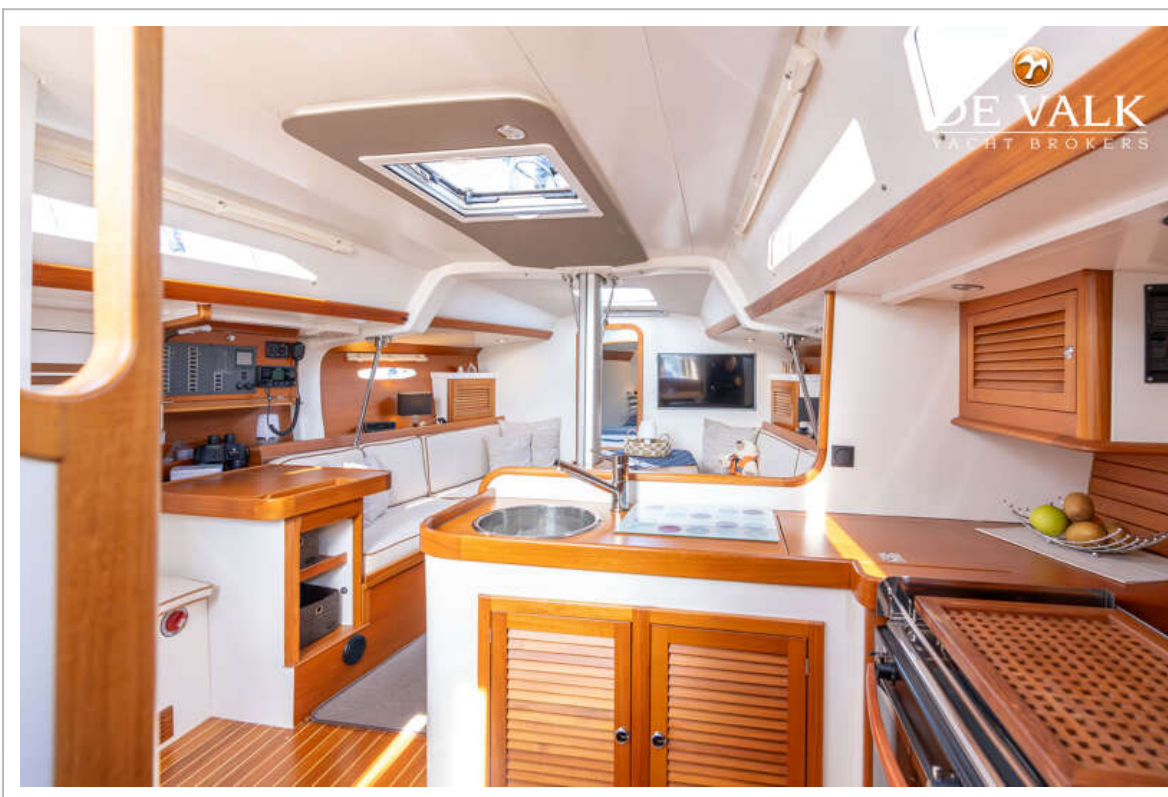
VA 403 - LIGHT WEIGHT CRUISER/RACER



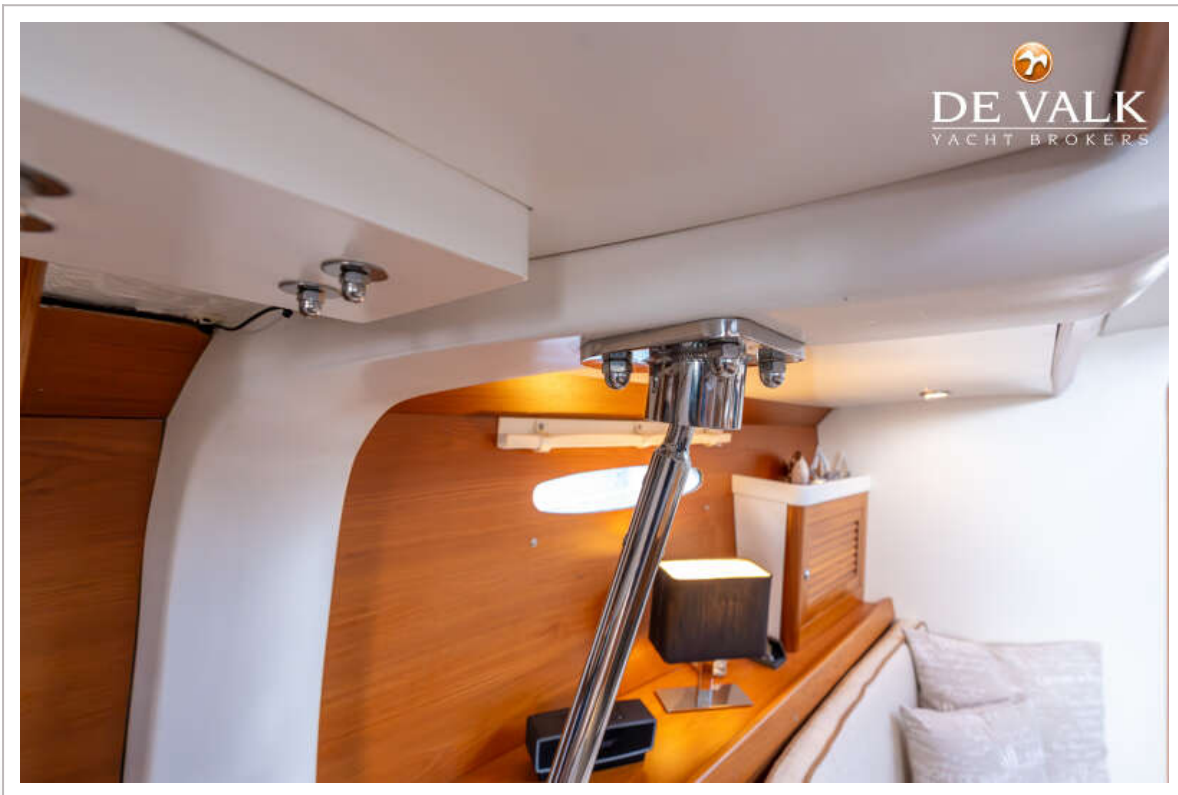
VA 403 - LIGHT WEIGHT CRUISER/RACER



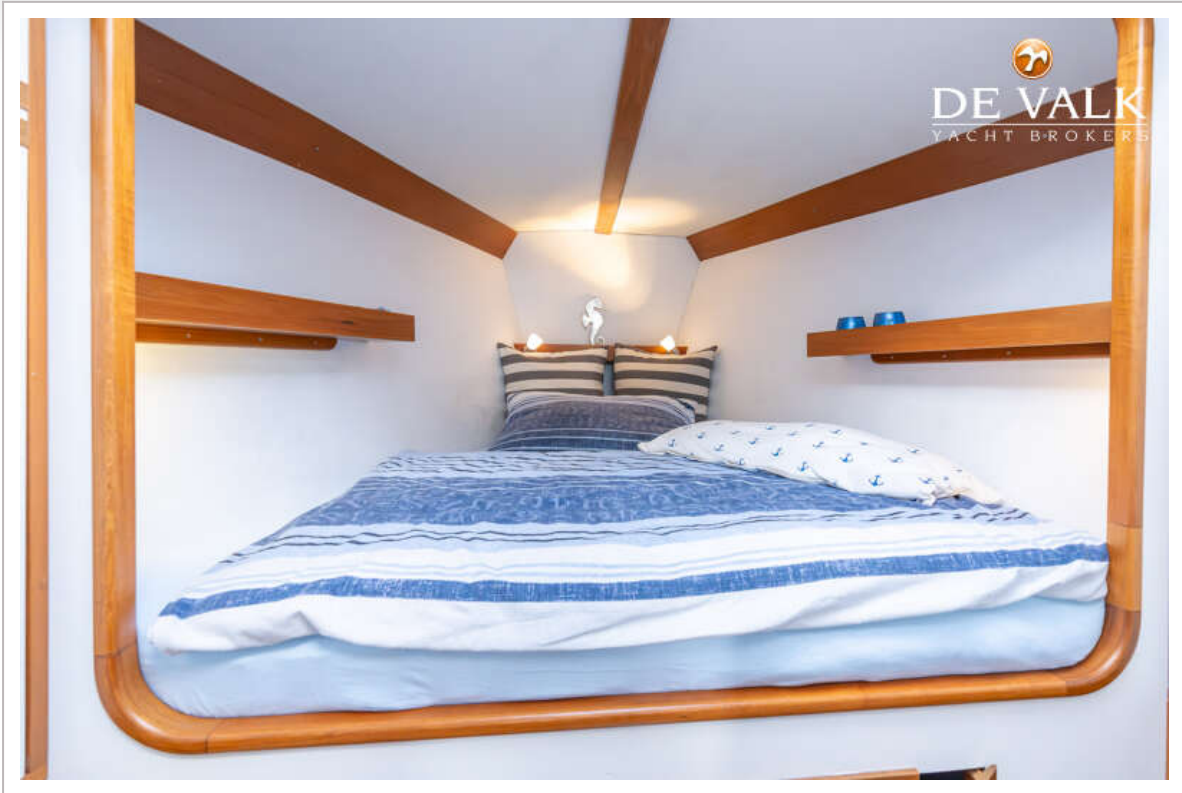
VA 403 - LIGHT WEIGHT CRUISER/RACER



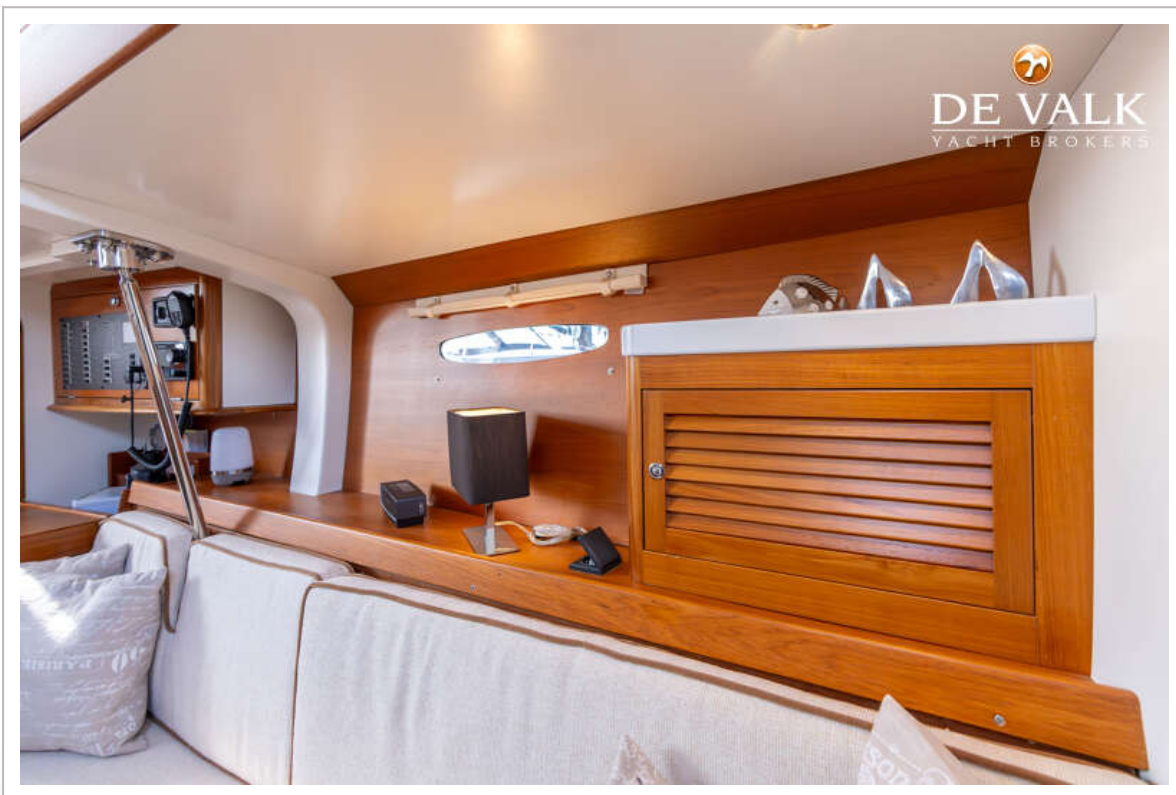
VA 403 - LIGHT WEIGHT CRUISER/RACER



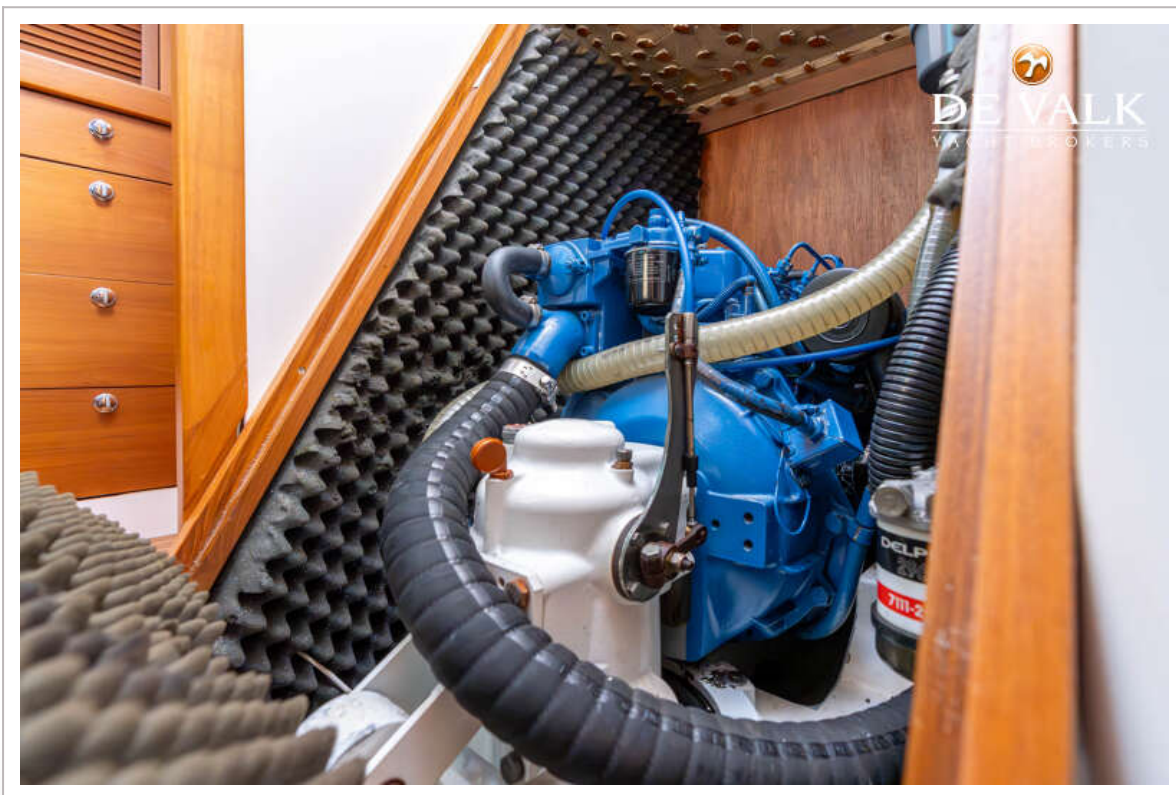
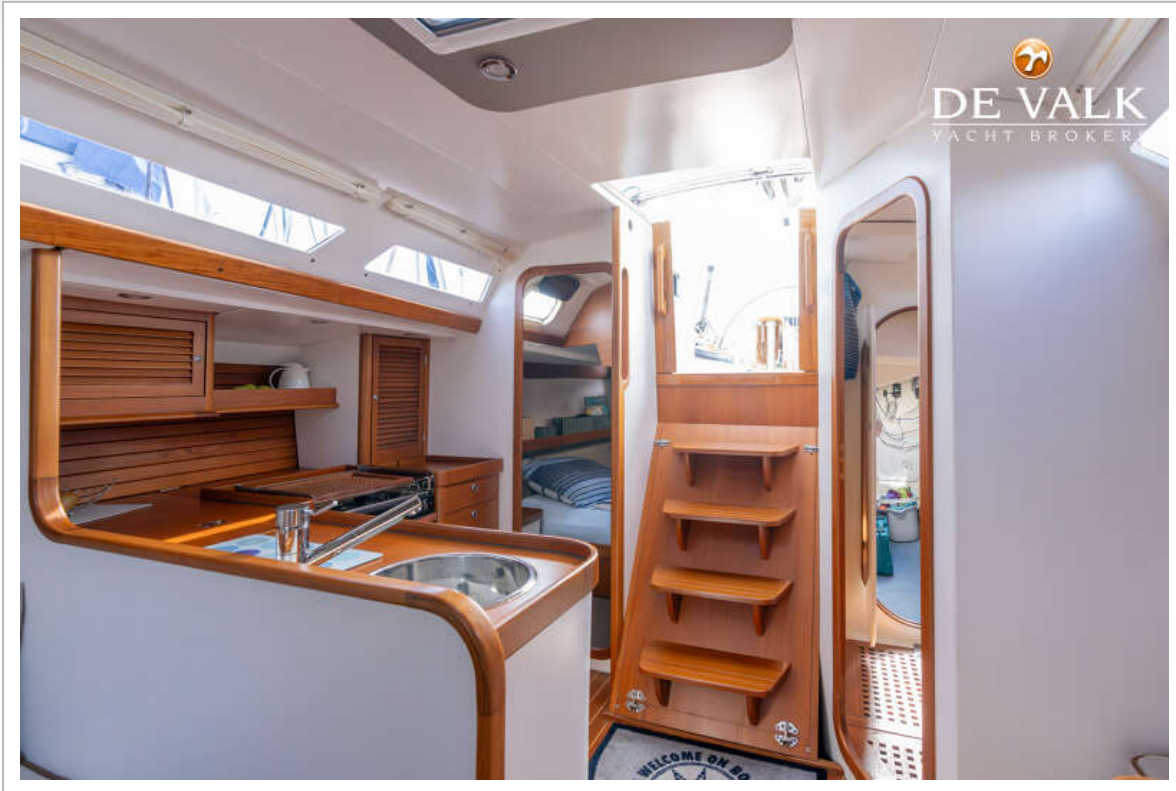
VA 403 - LIGHT WEIGHT CRUISER/RACER



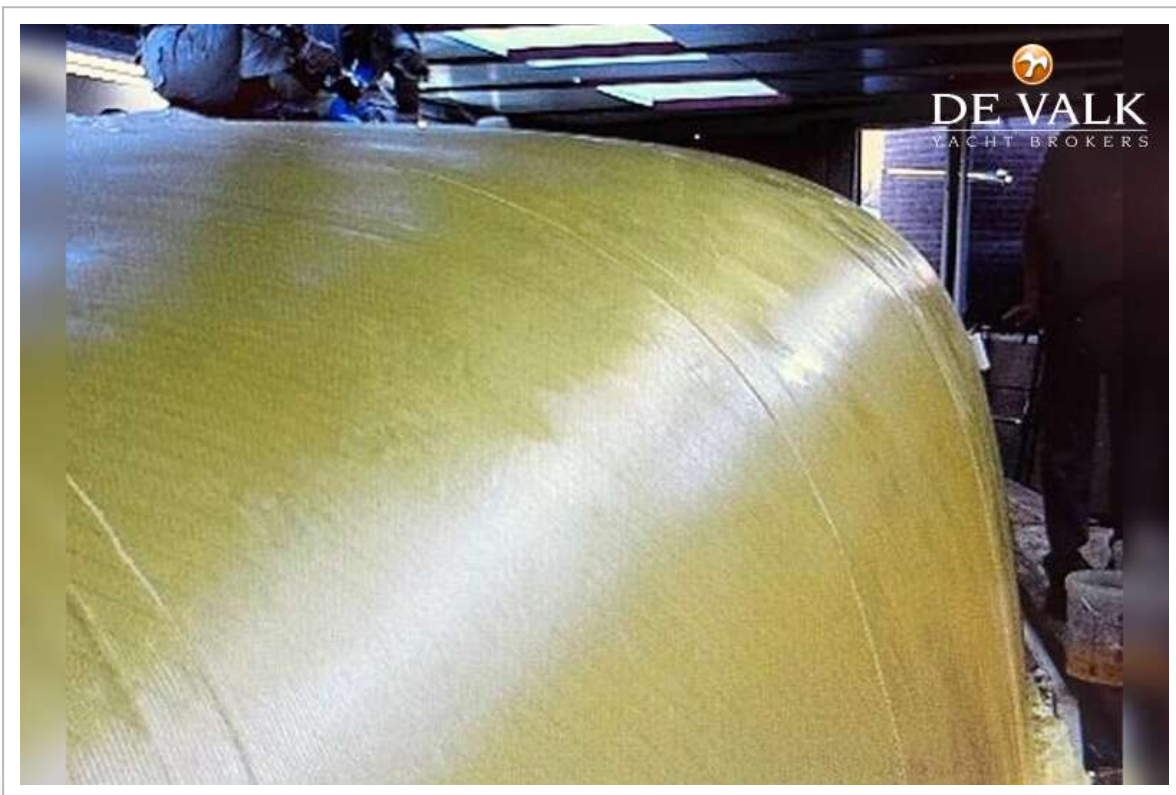
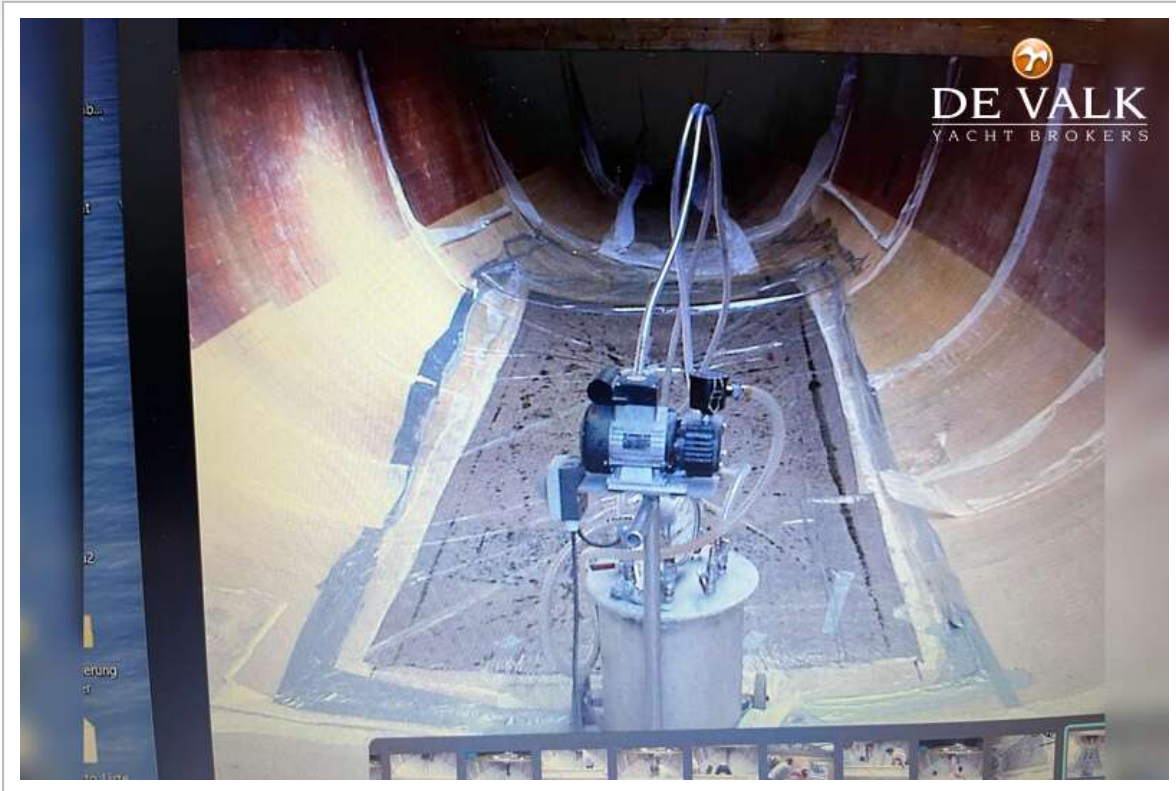
VA 403 - LIGHT WEIGHT CRUISER/RACER



VA 403 - LIGHT WEIGHT CRUISER/RACER



VA 403 - LIGHT WEIGHT CRUISER/RACER



VA 403 - LIGHT WEIGHT CRUISER/RACER



