



DE VALK
YACHT BROKERS



HANSE 470E



DE VALK
YACHT BROKERS

BROKERAGE | CHARTER | BERTHS | FINANCE | INSURANCE | YACHT MANAGEMENT

BROKER'S COMMENTS

Most likely the best one on the market; look at this special one! This is a almost like new Hanse 470E version from 2007. Yes, indeed, the super strong epoxy reinforced version. Owners 3 cabin layout, never in charter, normal family cruising used. But what a fantastic and useful renewals and upgrades last 2 years! Lithium batteries, solar panels, sails, rigging, electronics, airconditioning, upholstery, memory foam matrass and-so-on, simply too much to tell. Convince yourself, but be alert, first one to see will most likely want to sail away that same day! Absolute stunning and over complete!

Willem Koopmans

SPECIFICATIONS

Dimensions	14.19 x 4.46 x 2.60 (m)	Builder	Hanse Yachts AG
Built	2007	Cabins	3
Material	GRP	Berths	6
Engine(s)	1 x Yanmar 4JH4-TCE diesel	Hp/Kw	75.00 (hp), 55.20 (kw)
Asking price	sold (VAT)	Lying	contact sales office

CONTACT

Sales office	De Valk Costa Blanca	Telephone	+34 96 50 21 569
Address	Costa Blanca Region 03730 Javea Alicante ES	E-mail	costablanca@devalk.nl

DISCLAIMER

These particulars are given in good faith as supplied but cannot be guaranteed.



GENERAL

Model	HANSE 470E
Type	sailing yacht
LOA (m)	14,19
LWL (m)	12,60
Beam (m)	4,46
Draft (m)	2,60
Air draft (m)	25,90
Air draft min (m)	24,50
Headroom (m)	2,10
Year built	2007
Launched	2007
Builder	Hanse Yachts AG
Country	Germany
Designer	Judel / Vrolijk & Co.
Displacement (t)	12,2
Ballast (tonnes)	3,55
CE norm	A
Hull material	GRP
Hull colour	white
Hull shape	470E means hull reinforced with epoxy.
Keel type	fin keel
Superstructure material	GRP
Deck material	GRP
Deck finish	teak
Superstructure deck finish	teak
Cockpit deck finish	teak
Antifouling (year)	March 2022
Window frame	aluminium
Window material	polycarbonate
Deckhatch	yes



Radar arch	With davits for dinghy
Fuel tank (litre)	220
Fuel tank 2 (litre)	stainless steel 160, for safety, extra fuel/water filter separator in between
Level indicator (fuel tank)	yes
Freshwater tank (litre)	stainless steel 400, 2x 200 ltr
Level indicator (freshwater)	yes
Blackwater tank (litre)	120, 2x ca. 60 ltr with pump out
Wheel steering	Double, with 2 custom made seats; plus handle bags, new 2022
Outside helm position	yes
Emergency tiller	yes
More info on hull	Epoxy reinforced; much stronger than the basic GRP version

ACCOMMODATION

Cabins	3
Berths	6
Interior	cherry
Layout	Owner front and two aft cabins
Floor	parquet
Open cockpit	yes
Saloon	Sofa on star board, custom made, instead of 2 separate chairs
Headroom saloon (m)	2,1
Heating	2x radiator
Air-conditioning	reverse cycle airco 16.000 BTU soft start, new 2022
Navigation center	yes
Chart table	yes
Aft Cabin	Double
Dinette	yes
Opening door to cockpit	yes
Galley	yes
Countertop	Duropol Dark grey



Sink	Dark grey Duropal double sink
Cooker	calor gas 3 burner Force 10
Oven	Force 10
Microwave	yes
Fridge	yes
Freezer	yes
Hot water system	220V/engine/heating Isotherm boiler
Water pressure system	yes
Owners cabin	double bed With custom-made memory foam mattress, new 2022
Bed length (m)	2,05
Wardrobe	hanging and shelves
Bathroom	yes
Toilet	en suite Bigger US sized bowl used for toilet, new 2023
Toilet system	manual
Wash basin	in the bathroom
Shower	en suite
Guest cabin 1	double bed Aft star board
Bed length (m)	2,05
Wardrobe	hanging and shelves
Bathroom	shared
Toilet	Bigger US sized bowl used for toilet, new 2023
Toilet system	electric
Wash basin	in the bathroom
Shower	shared
Guest cabin 2	Aft port side
Bed length (m)	2,05
Wardrobe	hanging and shelves
Bathroom	shared
Toilet	shared
Toilet system	electric Bigger US sized pot used for toilet
Wash basin	in the bathroom



Shower	shared
Extra info	All interior lights are LED
Extra info	Magma bbq grill outside

MACHINERY

No of engines	1
Make	Yanmar
Type	4JH4-TCE
HP	75
kW	55.20
Fuel	diesel
Year installed	2007
Year of overhaul	Heat exchanger cleaned in 2023
Maximum speed (kn)	9
Cruising speed (kn)	7
Consumption (l/hr)	4
Range (nm)	435
Engine hours	1800, approx.
Engine cooling system	freshwater heat exchanger System cleaned 2023
Drive	sail-drive
Saildrive seal	Replaced in 2018
Engine controls	bowden cable
Gearbox	mechanical
Bowthruster	Side Power, new 2022
Propeller type	folding Made of brass
Propeller blades	Maxprop 3
Manual bilge pump	yes
Electric bilge pump	yes
Electrical installation	12/228
Generator	Panda Mobil Power, 3kW DC/12V
Batteries	yes



Start battery	yes
Service battery	800 Amp Lithium LiFePO4, new 2022
Bowthruster battery	2x, new 2022
Battery monitor	yes
Battery charger	yes
Battery charger/inverter	Victron 12/3000/120, new 2022
Solar panel	Eco-Worthy, 500 Watt in total on solar arch, new 2022
Shorepower	with cable
Extra info	Too much to mention renewals, yacht is "spotless"
Extra info	Service done on engine and generator, August 2023
Extra info	At ca. 1.100 hrs new engine display, total hours ca. 1.800

NAVIGATION

Compass	yes
Electric compass	On autopilot
Depth sounder/log	Simrad IS 12 with new sensors
Windset	Raymarine multi function I-70/60/50 series, new 2022
VHF	Furuno
VHF handheld	New 2022
Autopilot	P70 Raymarine, new 2022 plus remote control
Rudder angle indicator	On autopilot
Radar	Raymarine Quantum 2 radar, new 2022
GPS	Furuno GPS/Waas Navigator
Radar/GPS/plotter	Raymarine Axiom 12 inch, new 2022
Personal computer	Functionality unknown
Wifi antenna	See comment below
AIS transceiver	Connected to Raymarine chart plotter
EPIRB	yes
Navigation lights	Tricolor and anchor light LED
Extra info	Almost brand new electronics
Extra info	Wifi booster on board, disconnected.



EQUIPMENT

Sprayhood with grab rail	In "as new" condition
Bimini	New canvas 2023 with "look through" to sails, when sailing
Sun awning	yes
Cockpit cushions	yes
Cockpit table	Folding
Cockpit chairs	New special made steering seats, with extra storage
Bathing platform	yes
Boarding ladder	stainless steel
Gangway	Aluminium, new 2022
Deck shower	yes
Anchor	Delta 25 kg
Anchor chain	80 mtr, 10 mm chain, chain new 2023
Windlass	electrical Lewmar
Dinghy	Goldenship 2,9 m, new 2022
Outboard	Mercury 8 hp
Outboard support	yes
Davits	Adjusted for solar panels and radar, antenna too
Davits controls	manual
Sea railing	yes
Grab rail (superstructure)	yes
Railing side opening gates	Sb and port
Life raft	container Plastimo
Life raft (pers)	8
Last life raft survey	Expire date to be confirmed
Lifejackets	8
Binocular	Plastimo
Radar reflector	yes
Fenders	yes
Mooring lines	yes
TV	Samsung, new 2023



Radio-cd player	yes
Cockpit speakers	yes
Speakers in salon	yes
Fire extinguisher	yes
Latest extinguisher survey	Needs check

RIGGING

Rigging	sloop
Standing rigging	wire Replaced in 2022
Spreaders	3x, new 2022
Keel stepped mast	yes
Mainsail cover	Lazy bag
Battcars	yes
Fully battened mainsail	New 2021
Jib	Self tacking, new 2021
Genoa furler	Profurl, new 2022
Self tacking jib installation	yes
Reefing System	yes
Backstay adjuster	yes
Boomvang	yes
Genoa sheetwinches	2x Lewmar 54ST
Multifunctional winches	2x Lewmar 46 ST, 1x electric
Extra info	New sails, new rigging, new spreaders.... what a great start!



HANSE 470E



HANSE 470E



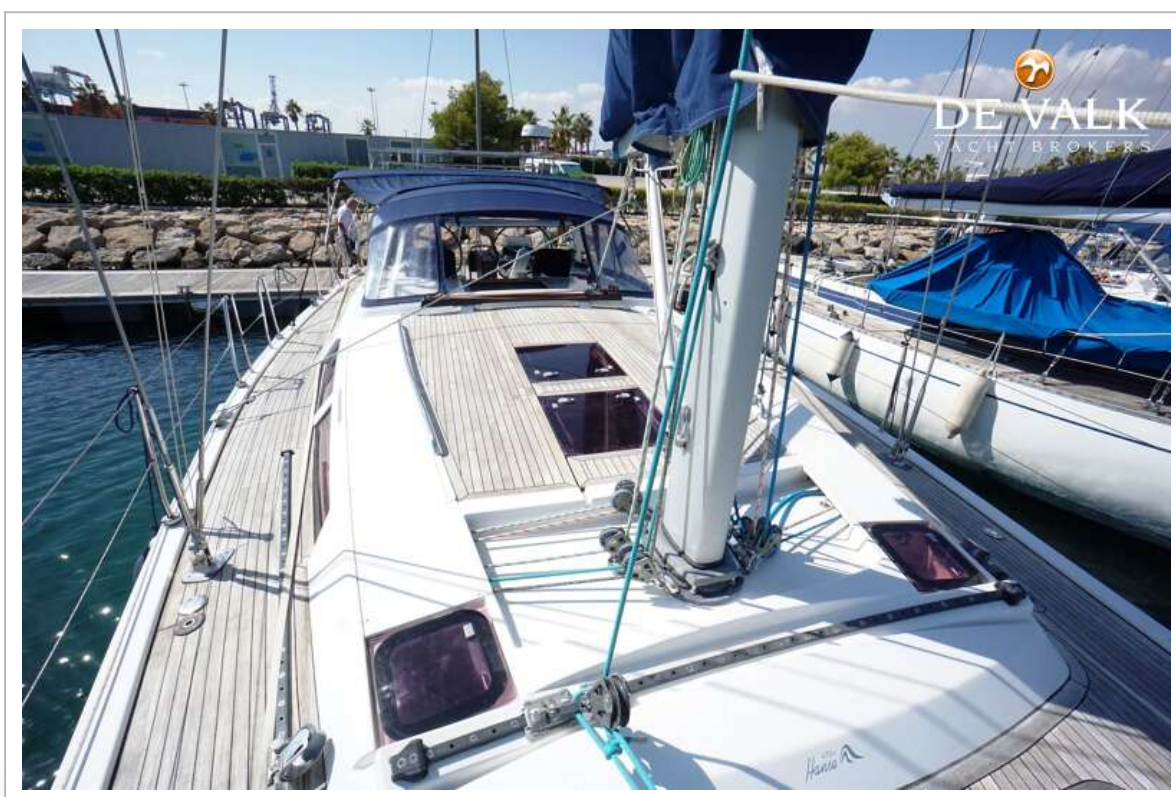
HANSE 470E



HANSE 470E



HANSE 470E



HANSE 470E



HANSE 470E



HANSE 470E



HANSE 470E



HANSE 470E



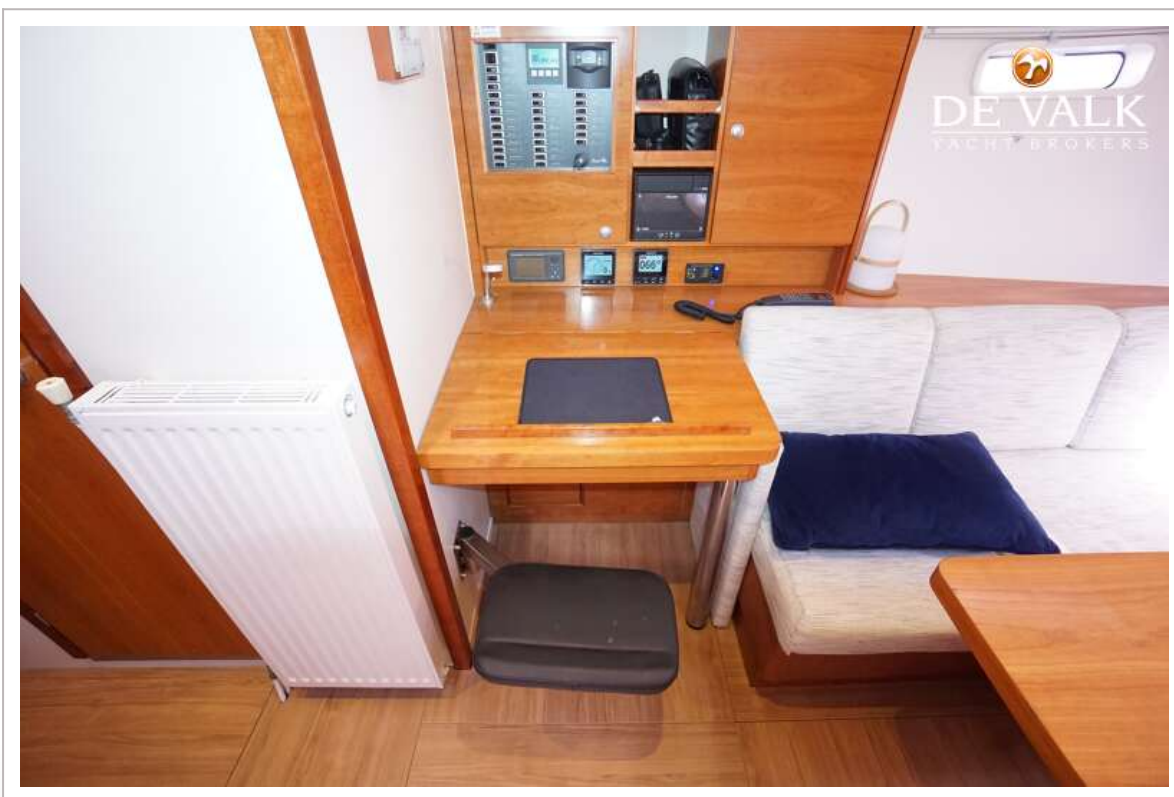
HANSE 470E



HANSE 470E



HANSE 470E



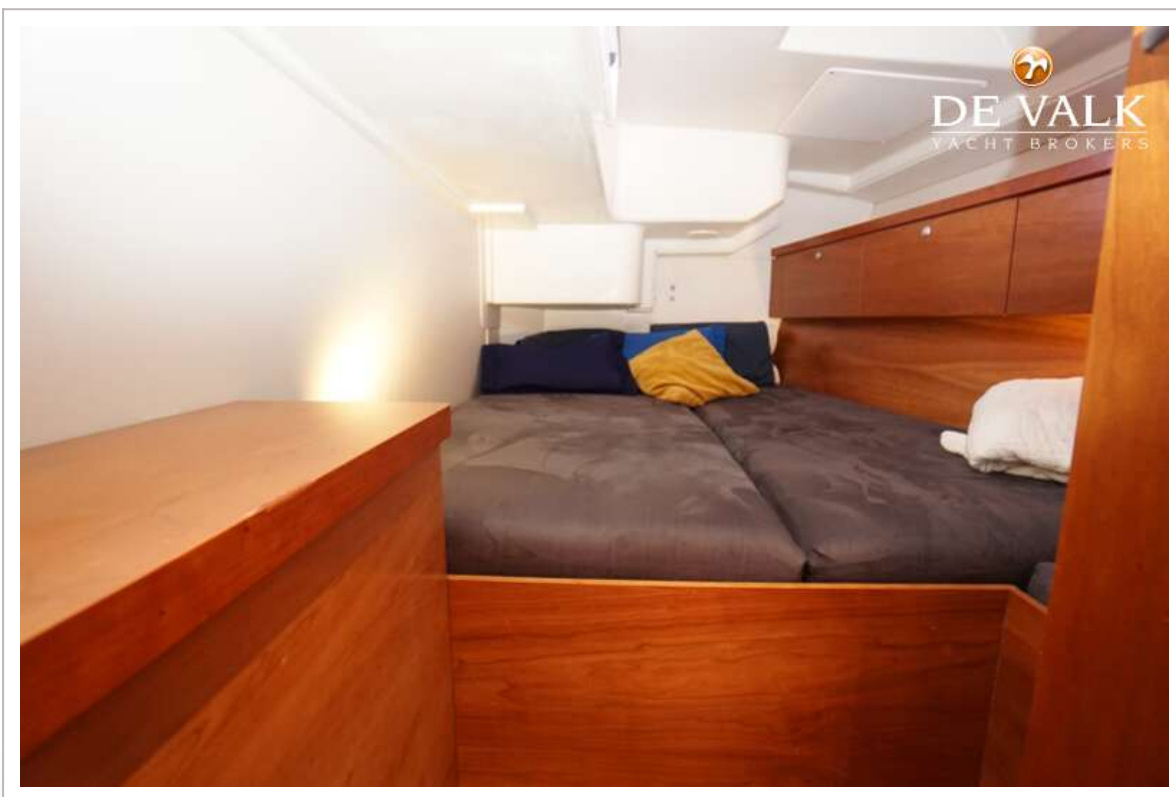
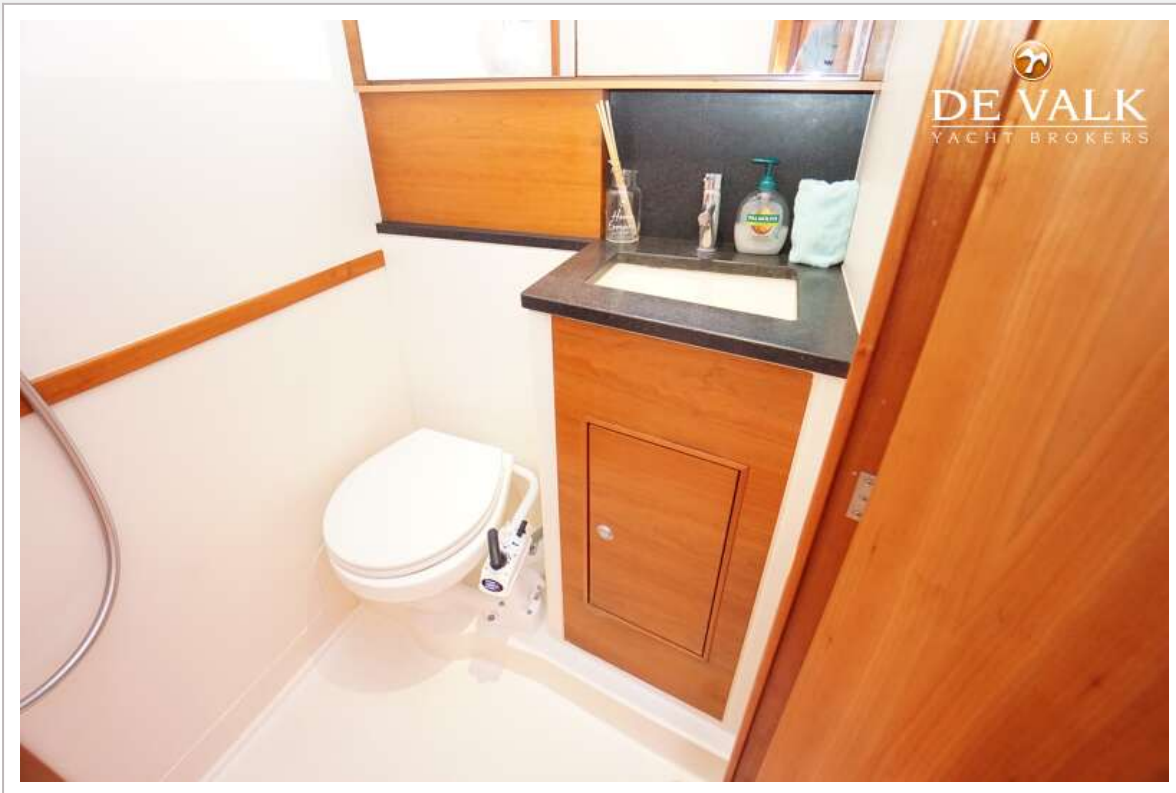
HANSE 470E



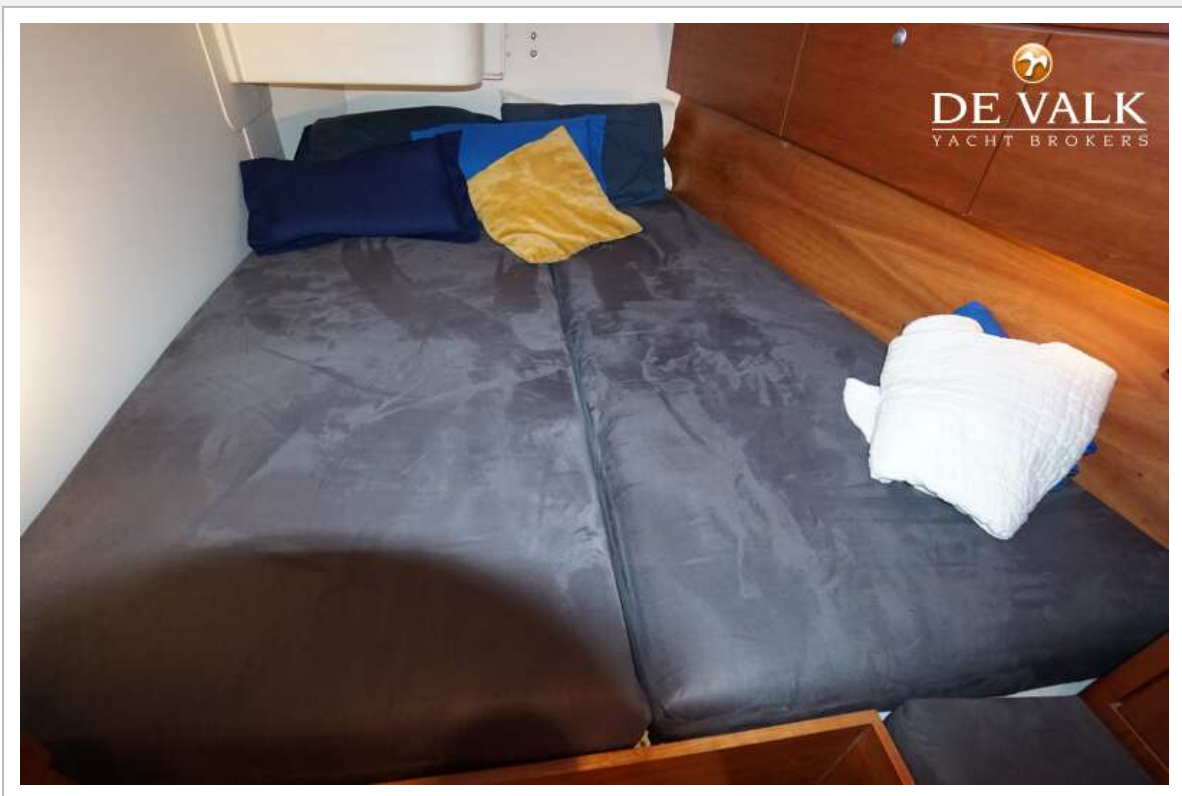
HANSE 470E



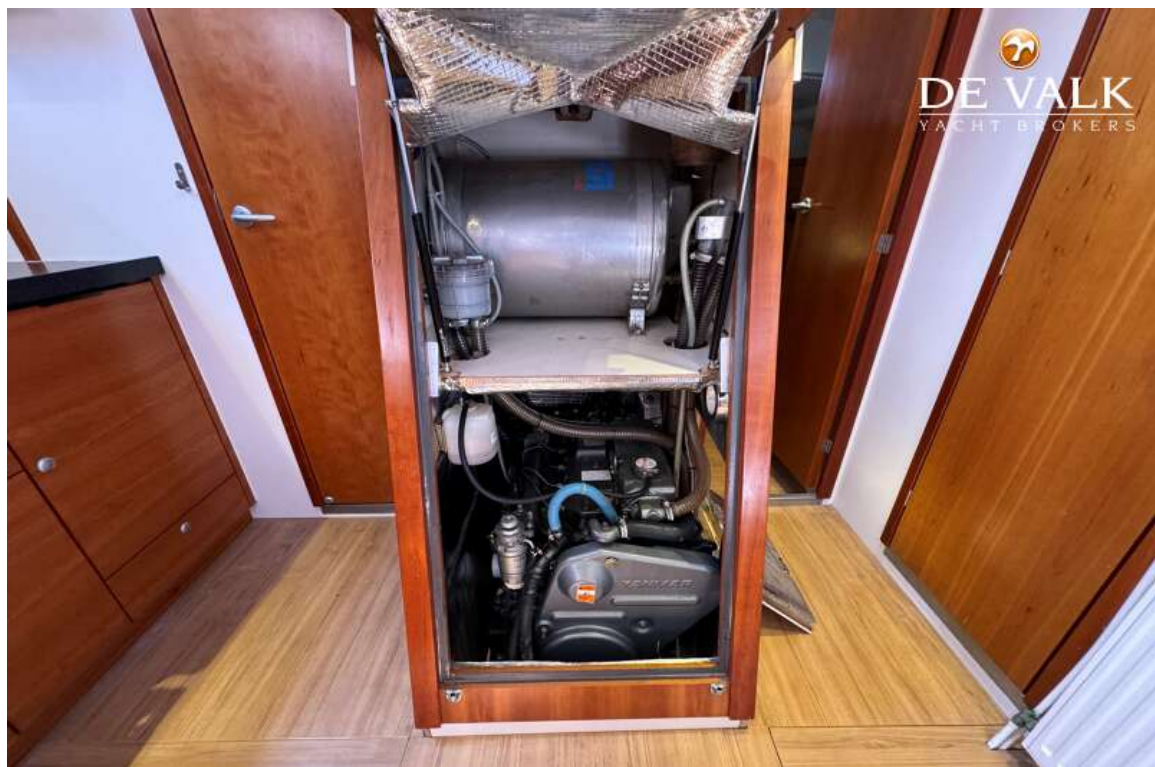
HANSE 470E



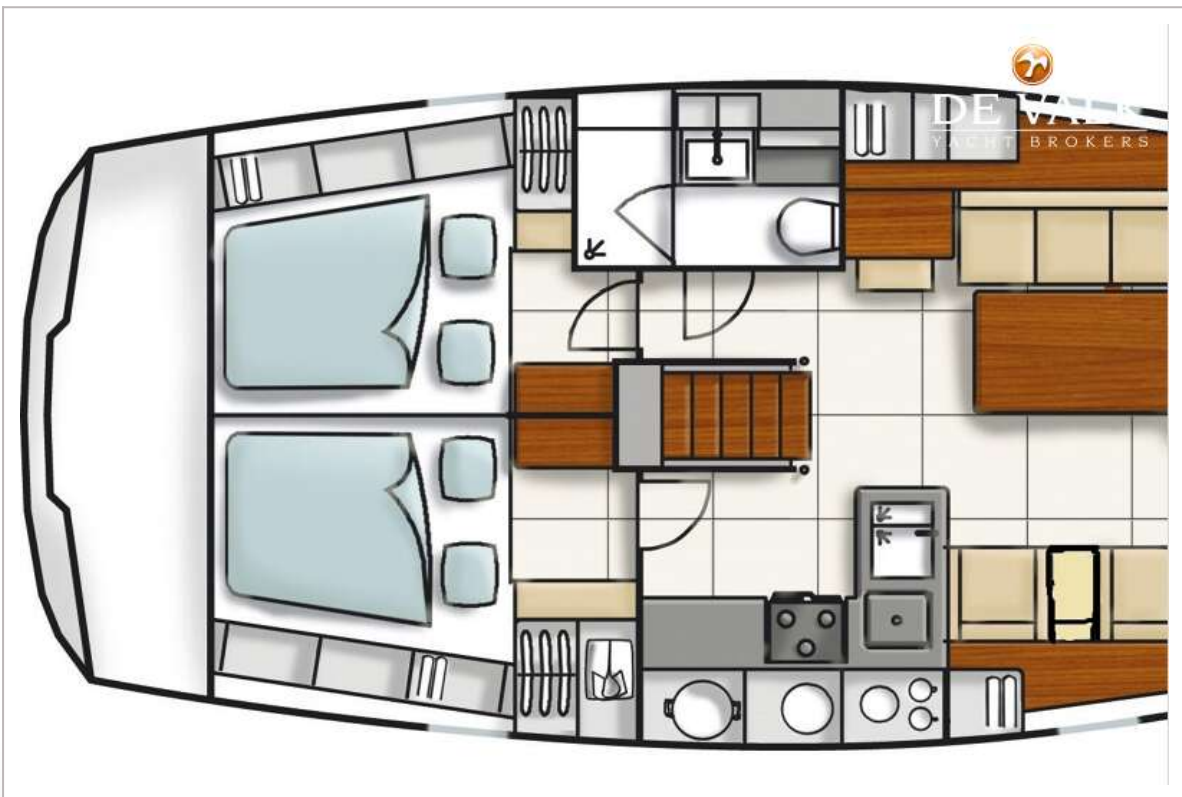
HANSE 470E



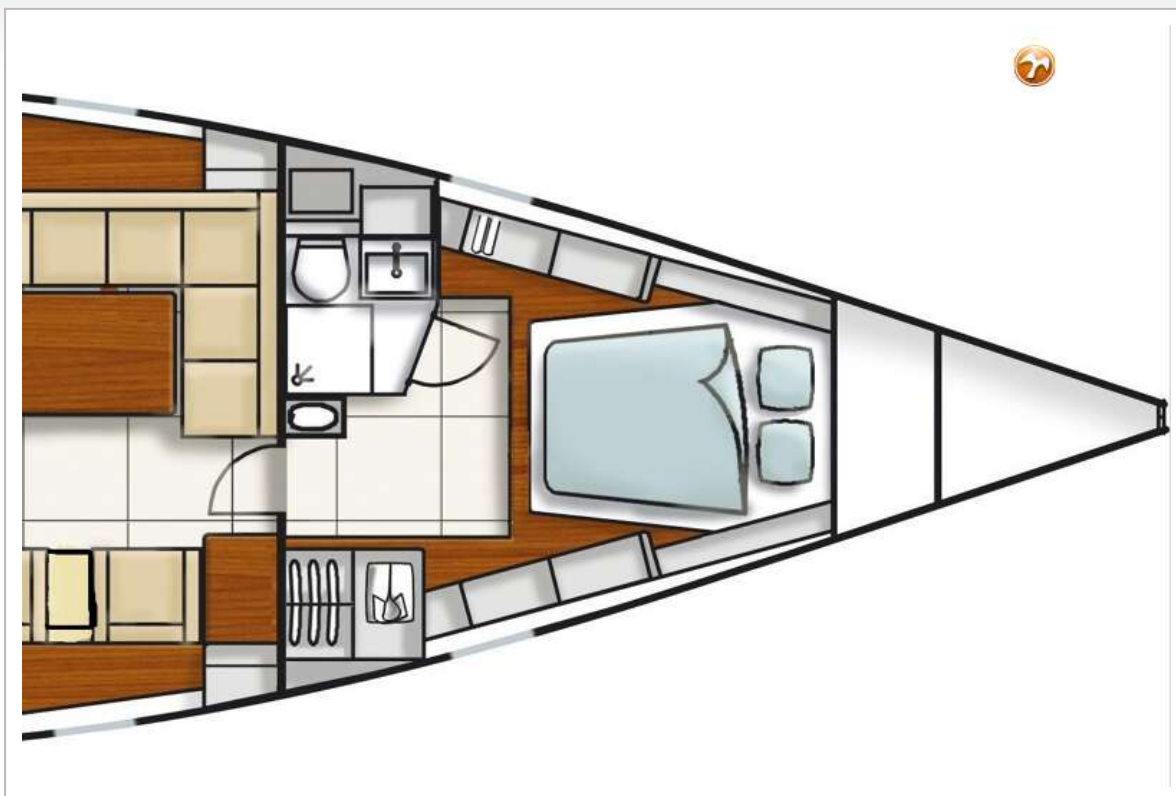
HANSE 470E



HANSE 470E



HANSE 470E



Specification Hanse 470e

LOA	14.19 m 46'7"
Hull length	14.19 m 46'7"
LWL	12.60 m 41'4"
Beam	4.46 m 14'8"
Draft	2.60 m 8'6" (standard) 2.30 m 7'7" (option) 1.95 m 6'5" (option)
Displacement	approx. 12.2 t approx. 26,932 lb
Ballast	approx. 3550 kg approx. 7837 lb (standard)
Engine	41 kW / 55 HP
Fresh water	approx. 400 l
Fuel tank	approx. 250 l
CE Certificate	A (ocean)
Mast length above WL	approx. 24.43 m approx. 80'2"
Total sail area	approx. 124 m² approx. 1,334 sq ft
Main sail	approx. 67.50 m² approx. 727 sq ft
Self-tacking jib	approx. 48.30 m² approx. 520 sq ft
Genoa 105%	approx. 56.50 m² approx. 606 sq ft (option)
Gennaker	approx. 170.00 m² approx. 1,830 sq ft (option)
Rig	I 20.00 m 65'7" J 5.32 m 17'6" P 20.00 m 65'7" E 5.70 m 18'8"
Design	judel / vroljik & co
Interior	HanseYachts Design

The production of all HanseYachts is supervised by Germanischer Lloyd according to GL Yacht Plus.

Modelyear 2006/2007 - valid from 01. August 2008

