



DE VALK  
YACHT BROKERS



## ALLIAURA PRIVILEGE 435



DE VALK  
YACHT BROKERS

# ALLIAURA PRIVILEGE 435

## BROKER'S COMMENTS

The Privilege 435 is a long-distance cruiser and stands out from other cats by virtue of its luxurious and opulent construction and finish. She has a low-slung superstructure for low wind resistance. Well proportioned this catamaran has the perfect size for extensive holiday/live aboard offering four generously proportioned cabins with ensuite facilities. Intensive maintenance work and investments were carried out in March/April 2023. Berth available in Valencia.

*Oliver Stehula*

## SPECIFICATIONS

<b>Dimensions</b>	13.40 x 7.07 x 1.35 (m)	<b>Builder</b>	Alliaura Marine
<b>Built</b>	2001	<b>Cabins</b>	4
<b>Material</b>	GRP	<b>Berths</b>	8
<b>Engine(s)</b>	2 x Volvo Penta D2-50 & MD2040 diesel	<b>Hp/Kw</b>	2 x 50.00 (hp), 36.80 (kw)
<b>Asking price</b>	sold (VAT )	<b>Lying</b>	contact Palma

## CONTACT

<b>Sales office</b>	De Valk Palma	<b>Telephone</b>	+34 971 40 29 11
<b>Address</b>	Port. Cala Nova, Avda. Joan Miro, 327 07015 Palma de Mallorca ES	<b>E-mail</b>	palma@devalk.nl

## DISCLAIMER

These particulars are given in good faith as supplied but cannot be guaranteed.



# ALLIAURA PRIVILEGE 435

## GENERAL

<b>Model</b>	ALLIAURA PRIVILEGE 435
<b>Type</b>	catamaran sailing yacht
<b>LOA (m)</b>	13,40
<b>Beam (m)</b>	7,07
<b>Draft (m)</b>	1,35
<b>Headroom (m)</b>	2,20
<b>Year built</b>	2001
<b>Builder</b>	Alliaura Marine
<b>Country</b>	France
<b>Designer</b>	Marc Lombard
<b>Displacement (t)</b>	8,3
<b>CE norm</b>	A
<b>Hull material</b>	GRP
<b>Hull colour</b>	white
<b>Hull shape</b>	multi hard chine
<b>Keel type</b>	bilge keels Fixed keel
<b>Superstructure material</b>	GRP
<b>Antifouling (year)</b>	March/April 2023
<b>Fuel tank (litre)</b>	stainless steel 397 litre
<b>Level indicator (fuel tank)</b>	yes
<b>Freshwater tank (litre)</b>	stainless steel 663 litre
<b>Blackwater tank (litre)</b>	yes
<b>Level indicator (blackwater)</b>	Tankwatch 4
<b>Blackwater tank extraction</b>	pump
<b>Wheel steering</b>	mechanical
<b>Outside helm position</b>	cable steering
<b>Emergency tiller</b>	yes

## ACCOMMODATION

<b>Cabins</b>	4
---------------	---



# ALLIAURA PRIVILEGE 435

Berths	8
Interior	cherry
Saloon	yes
Headroom saloon (m)	2,00
Chart table	yes
Sink	stainless steel Double sink
Cooker	Gas 3 burner
Oven	yes
Gas alarm	yes
Fridge	160
Freezer	130
Hot water system	220V + engine 40 liters
Water pressure system	electrical
Guest cabin 1	double bed
Bed length (m)	2,00 x 1,60
Wardrobe	hanging/drawers/shelves
Bathroom	shared
Toilet	shared
Toilet system	manual
Wash basin	in the bathroom
Shower	separate
Guest cabin 2	double bed
Bed length (m)	2,00 x 1,60
Wardrobe	hanging/drawers/shelves
Bathroom	shared
Toilet	shared
Toilet system	manual
Wash basin	in the bathroom
Shower	separate
Guest cabin 3	double bed
Bed length (m)	2,00x 1,60
Wardrobe	hanging/drawers/shelves



<b>Bathroom</b>	En suite
<b>Toilet</b>	shared
<b>Toilet system</b>	manual
<b>Wash basin</b>	in the bathroom
<b>Shower</b>	separate
<b>Guest cabin 4</b>	double bed
<b>Bed length (m)</b>	2,00 x1,60
<b>Wardrobe</b>	hanging/drawers/shelves
<b>Bathroom</b>	yes
<b>Toilet</b>	shared
<b>Toilet system</b>	manual
<b>Wash basin</b>	in the bathroom
<b>Shower</b>	shared

## MACHINERY

<b>No of engines</b>	2
<b>Make</b>	Volvo Penta
<b>Type</b>	D2-50 & MD2040
<b>HP</b>	50
<b>kW</b>	36.80
<b>Fuel</b>	diesel
<b>Year installed</b>	2023
<b>Maximum speed (kn)</b>	9,0
<b>Cruising speed (kn)</b>	8,5
<b>Engine hours</b>	10 & 2600
<b>Drive</b>	sail-drive
<b>Engine controls</b>	electrical
<b>Gearbox</b>	mechanical
<b>Secondary engine</b>	diesel Port: Volvo Penta MD 2040 40HP 40 2001, 2600 hrs
<b>Gearbox</b>	mechanical
<b>Exhaust</b>	watercooled



<b>Propeller type</b>	fixed
<b>Propeller blades</b>	3 blade
<b>Electric bilge pump</b>	yes
<b>Electrical installation</b>	yes
<b>Generator</b>	Nothern Lights M673K
<b>Start battery</b>	2 x 85 Ah, new in 05/2023 and 07/2023
<b>Service battery</b>	7 x 85 Ah, new in 07/2023
<b>Battery monitor</b>	Master Volt
<b>Battery charger</b>	2x Mastervolt 12/70-3
<b>Inverter</b>	Victron Energy Atlas 12/1600
<b>Shorepower</b>	with cable
<b>Watermaker</b>	Sea Recovery / Agua Whisper

## NAVIGATION

<b>Compass</b>	yes
<b>Multi control display</b>	Raymarine ST 60+
<b>Windset</b>	Raymarine ST 60+
<b>VHF</b>	yes
<b>VHF handheld</b>	yes
<b>Autopilot</b>	Raymarine ST60 (new display 2023)
<b>Radar/GPS/plotter</b>	Raymarine RL80C
<b>Radio receiver</b>	Nasa Target HF3W SSB Receiver
<b>Navigation lights</b>	yes

## EQUIPMENT

<b>Sprayhood</b>	yes
<b>Bimini</b>	yes
<b>Window cover</b>	yes
<b>Cockpit cushions</b>	yes
<b>Cockpit table</b>	yes
<b>Bathing platform</b>	yes



Boarding ladder	yes
Gangway	yes
Deck shower	yes
Anchor	Bracket, 20 kg
Anchor chain	60 m,
Windlass	electrical Lewmar
Dinghy	Arimar 320 topline
Outboard	Yamaha 2,5 PS
Life raft	container Arimar
Life raft (pers)	8
Last life raft survey	2017
Lifejackets	8
Safety harness	yes
Fenders	yes
Mooring lines	yes
Radio-cd player	yes
Speakers in salon	yes
Speakers in cabin	yes

## RIGGING

Rigging	Divided rigging 8/9
Spreaders	1 pair
Fully battened mainsail	Dacron 9.3 (June 2012)
Genoa	2012, +1 additional as replacement
Primary sheet winch	yes
Secondary sheet winch	yes
Genoa sheetwinches	Electric



# ALLIAURA PRIVILEGE 435





# ALLIAURA PRIVILEGE 435

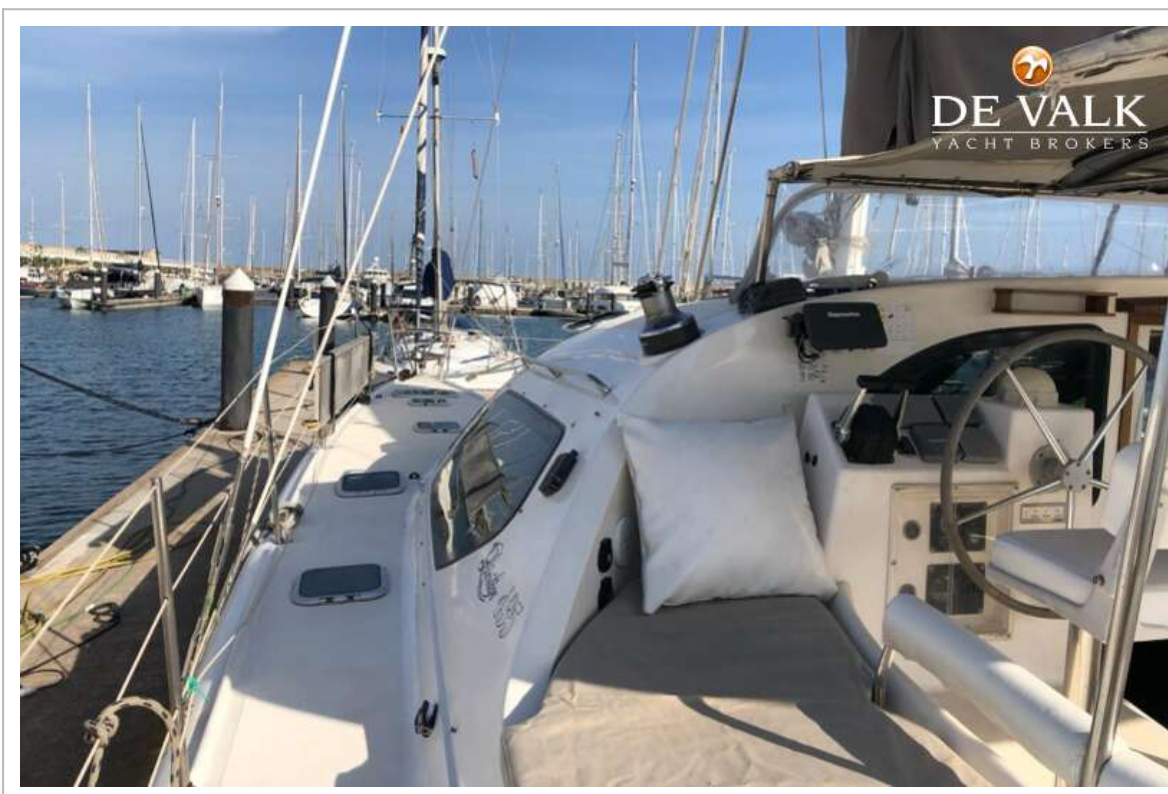


# ALLIAURA PRIVILEGE 435

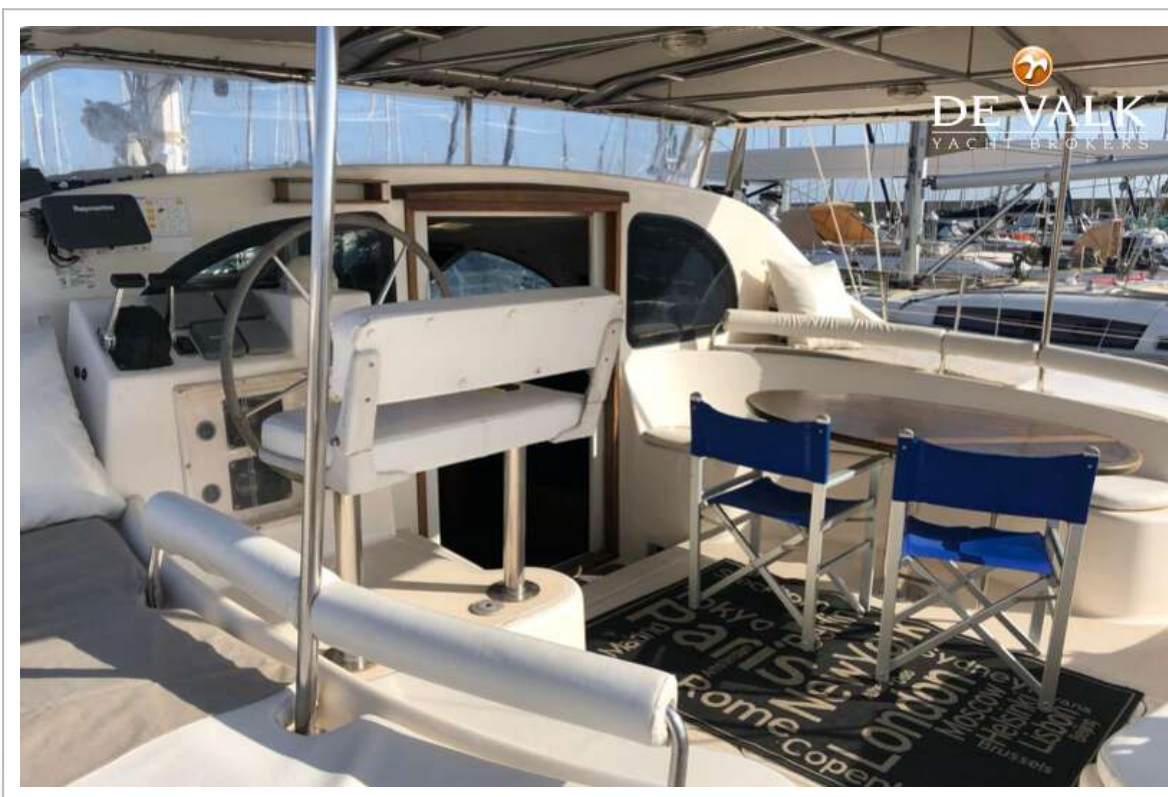
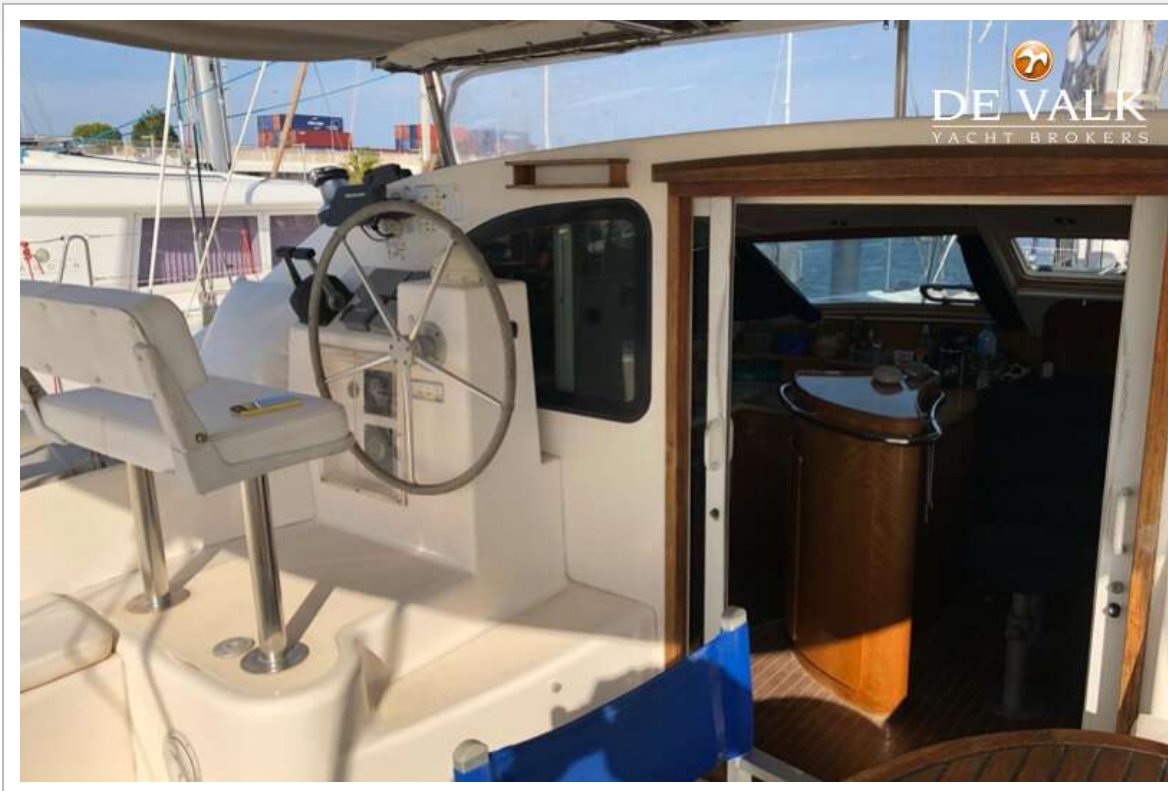




# ALLIAURA PRIVILEGE 435



# ALLIAURA PRIVILEGE 435





# ALLIAURA PRIVILEGE 435

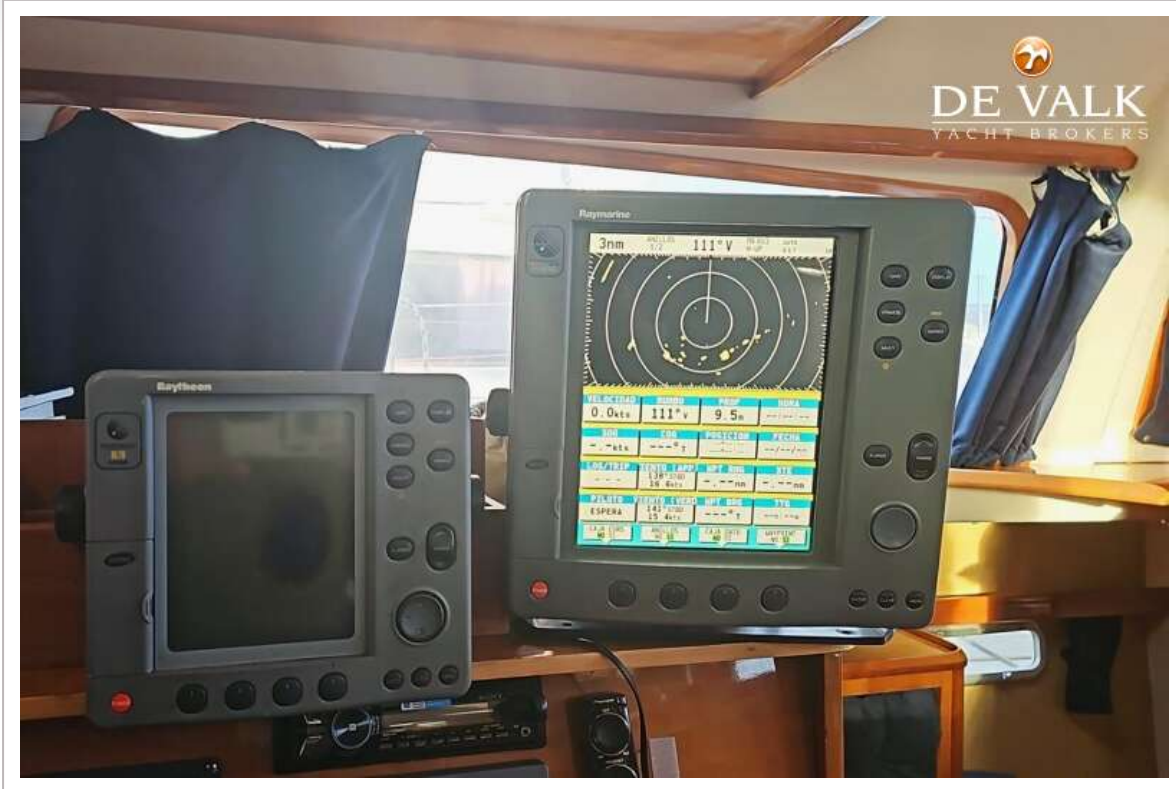


# ALLIAURA PRIVILEGE 435

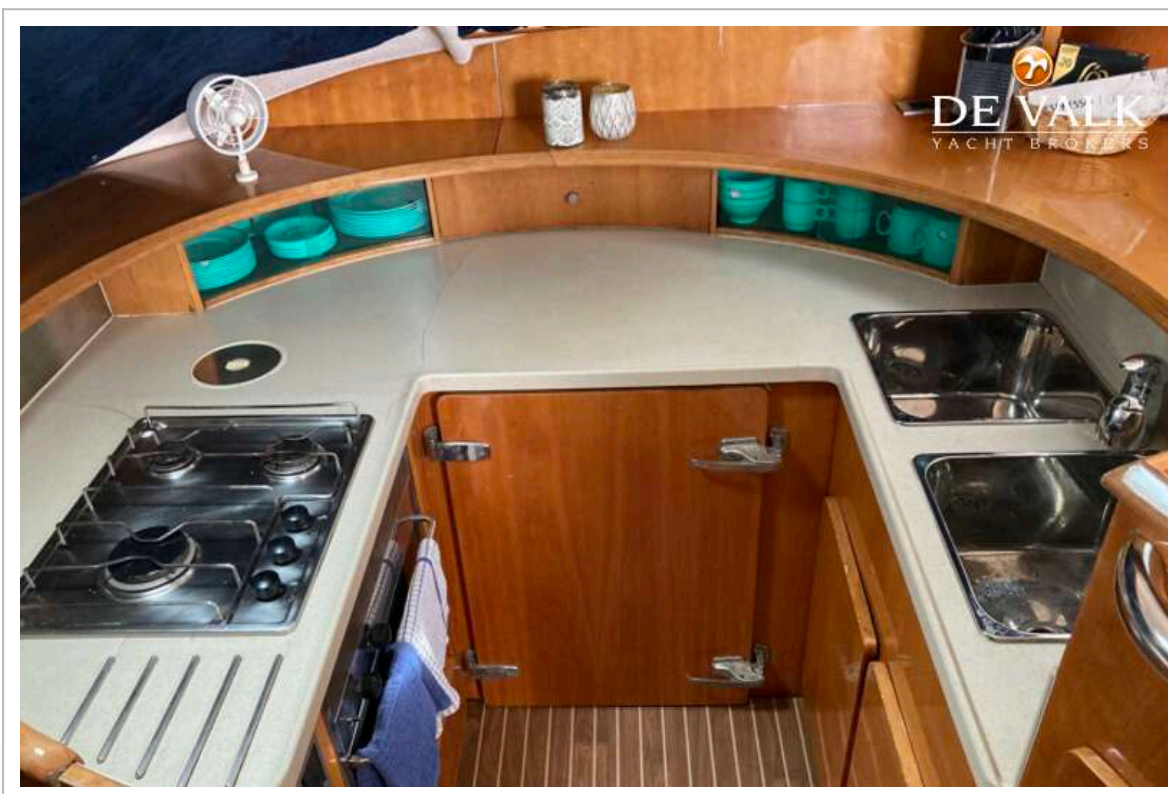




# ALLIAURA PRIVILEGE 435

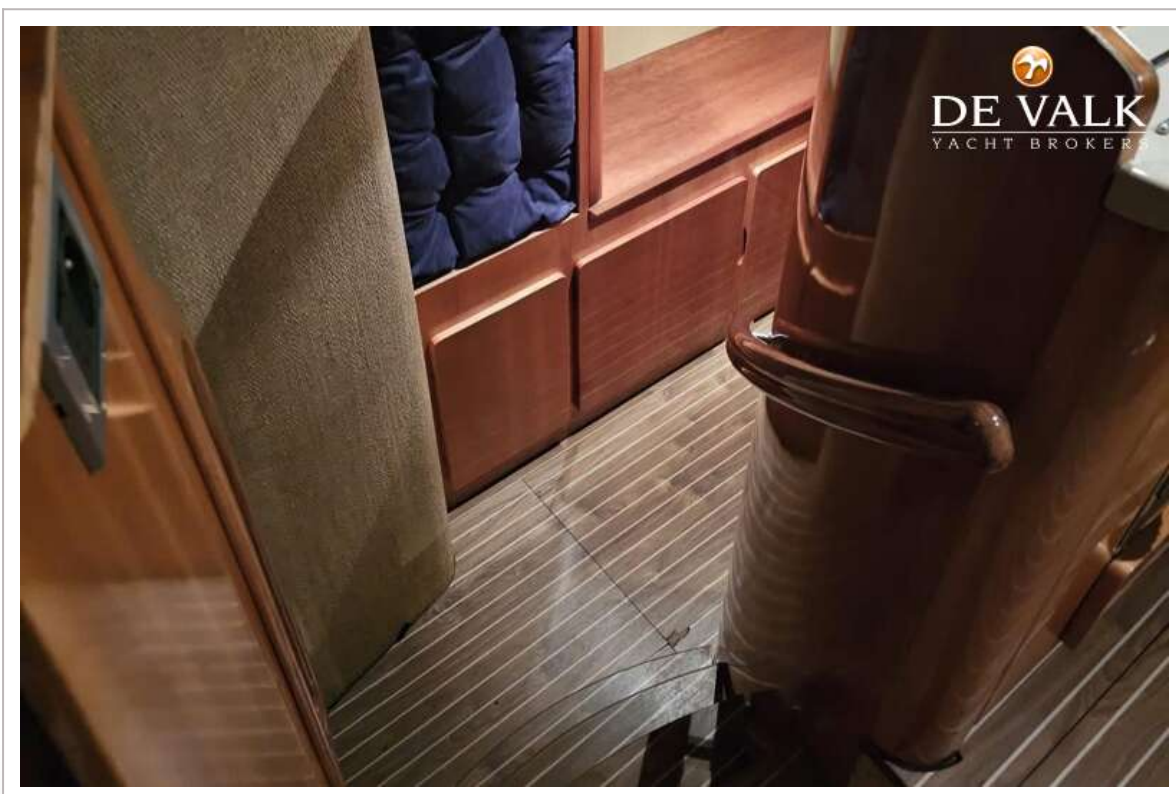


# ALLIAURA PRIVILEGE 435





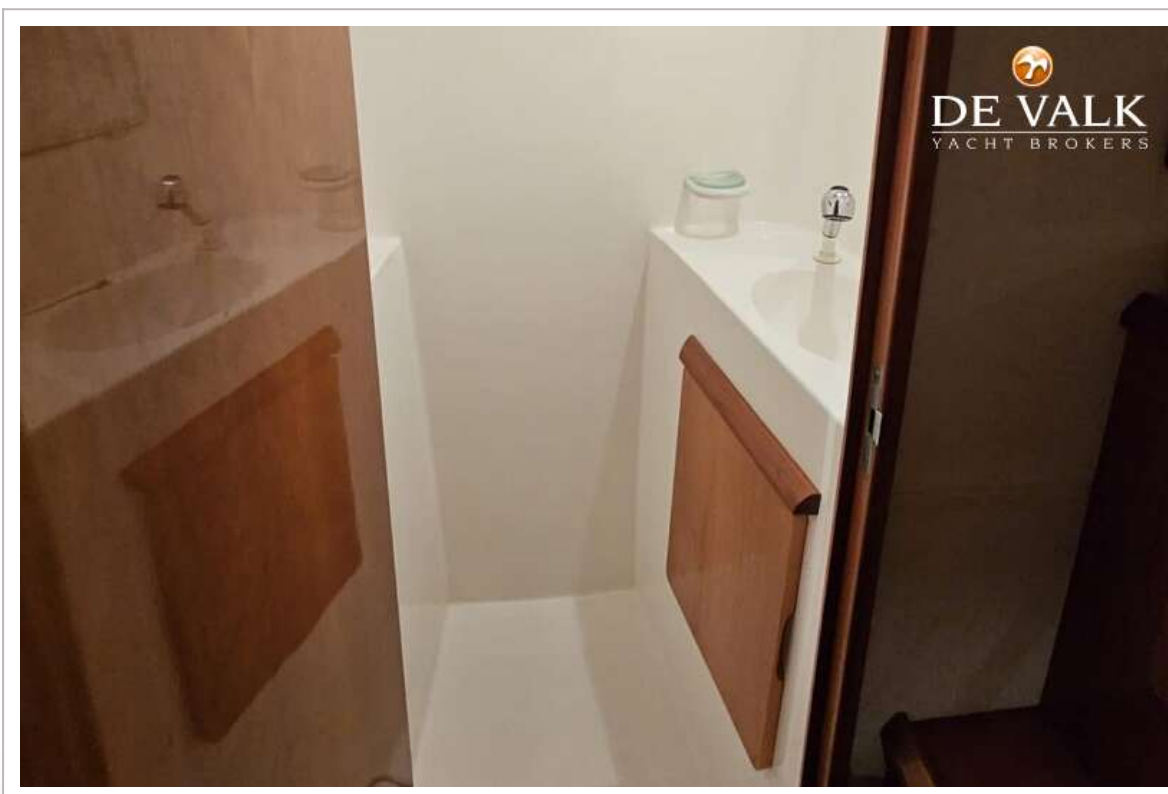
# ALLIAURA PRIVILEGE 435



# ALLIAURA PRIVILEGE 435



# ALLIAURA PRIVILEGE 435





# ALLIAURA PRIVILEGE 435

