



BAVARIA 39 CRUISER

BAVARIA 39 CRUISER

BROKER'S COMMENTS

The Bavaria 39 Cruiser is a nice sailing yacht, designed by J&J Design. Great sailing, wonderfully good space in the cockpit and inside. The Dutch (3rd) owner bought the yacht in 2019 in the Netherlands and from 2021 onwards they sailed quietly in the summers to the Mediterranean up to Greece. Well fitted out for longer stays onboard, sailing and anchoring. When not sailing she was docked onshore. Currently she is also on land in Aegina-Greece and we invite you to come and see this privately sailed and owned yacht already on location to have a wonderful time onboard.

Marc Weijenberg

SPECIFICATIONS

Dimensions	11.94 x 3.96 x 1.85 (m)	Builder	Bavaria Yachts
Built	2006	Cabins	3
Material	GRP	Berths	6
Engine(s)	1 x Volvo Penta D2-40 diesel	Hp/Kw	40.00 (hp), 29.44 (kw)
Asking price	sold (VAT)	Lying	Greece

CONTACT

Sales office	De Valk Thuishaven	Telephone	+31 35 5829042
Address	Peperstraat 7 1411 PX Naarden NL	E-mail	thuishaven@devalk.nl

DISCLAIMER

These particulars are given in good faith as supplied but cannot be guaranteed.



BAVARIA 39 CRUISER

GENERAL

Model	BAVARIA 39 CRUISER
Type	sailing yacht
LOA (m)	11,94
LWL (m)	10,71
Beam (m)	3,96
Draft (m)	1,85
Air draft (m)	18,35
Headroom (m)	2,00
Year built	2006
Launched	2007
Builder	Bavaria Yachts
Country	Germany
Designer	J en J Design
Displacement (t)	8,3
Ballast (tonnes)	cast iron 2,6
CE norm	A
Hull material	GRP
Hull colour	white With blue striping
Hull shape	round-bilged
Keel type	fin keel
Superstructure material	GRP
Rubbing strake	aluminum
Deck material	GRP
Deck finish	teak
Cockpit deck finish	teak
Antifouling (year)	2024
Dorades	yes
Window frame	aluminium
Window material	polycarbonate
Deckhatch	Lewmar



BAVARIA 39 CRUISER

Portholes	aluminium Lewmar
Insulation	foam
Fuel tank (litre)	polyethylene 210
Level indicator (fuel tank)	yes
Freshwater tank (litre)	polyethylene 1x 210 /1x 150
Level indicator (freshwater)	yes
Blackwater tank (litre)	polyethylene 1x 60 /1x 40
Wheel steering	mechanical Whitlock
Emergency tiller	yes
Extra info	Four TruDesign through hull fittings were installed in 2024
Extra info	Rudder bearings replaced in 2022
Extra info	always a private property, not a charter yacht

ACCOMMODATION

Cabins	3
Berths	6
Interior	mahogany
Floor	teak and holly
Saloon	new pillows in the salon
Headroom saloon (m)	2,00
Heating	diesel ducted hot air Webasto 550 Airtop
Chart table	yes
Aft Cabin	2x
Dinette	yes
Convertible berth	yes
Galley	yes
Countertop	plastic
Sink	stainless steel 2x
Cooker	calor gas 2 burner
Oven	calor gas
Fridge	12v



BAVARIA 39 CRUISER

Hot water system	220V + engine
Water pressure system	electrical
Owners cabin	double bed Front cabin
Bed length (m)	2,05
Wardrobe	hanging and shelves
Bathroom	en suite I
Toilet	en suite
Toilet system	manual
Wash basin	at the toilet
Shower	en suite
Extra info	new pump mechanism at Jabsco toilet in the front (2024)
Guest cabin 1	double bed
Bed length (m)	2,00
Wardrobe	hanging and shelves
Bathroom	shared II
Toilet	shared
Toilet system	electric
Wash basin	at the toilet
Shower	shared
Guest cabin 2	double bed
Bed length (m)	2,00
Wardrobe	hanging and shelves
Extra info	there are 220 volt sockets in every cabin

MACHINERY

No of engines	1
Make	Volvo Penta
Type	D2-40
HP	40
kW	29.44
Fuel	diesel



BAVARIA 39 CRUISER

Year installed	2009
Maximum speed (kn)	7,5
Cruising speed (kn)	6,5
Engine hours	2650
Engine cooling system	freshwater heat exchanger
Drive	sail-drive
Saildrive seal	replaced in 2014
Engine controls	bowden cable
Gearbox	mechanical
Bowthruster	electric
Propeller type	feathering Max Prop
Propeller blades	3
Manual bilge pump	yes
Electric bilge pump	yes
Electrical installation	12/220V
Batteries	6
Start battery	1x 85Ah(2024)
Service battery	3x 110Ah Victron (2024)
Bowthruster battery	1x
Windlass battery	1x
Battery monitor	Victron BMV 712
Battery charger	SBC 501FR 12V/45A
Shorepower	with cable
Extra info	The Volvo Penta engine has had annual maintenance and the exhaust elbow of the engine was replaced in 2022.

NAVIGATION

Compass	Plastimo Olympic 135
Electric compass	on the Raymarine Autohelm autopilot
Depth sounder/log	Raymarine ST60
Windset	Raymarine ST60



BAVARIA 39 CRUISER

VHF	Standard Horizon (2022)
VHF handheld	with GPS
Autopilot	2024 partly renewed Raymarine Autohelm ST6000
Radar/GPS/plotter	Raymarine C80 (2012)
Electronic chart(s)	yes
AIS transceiver	yes
EPIRB	battery 2019
Navigation lights	yes

EQUIPMENT

Sprayhood with grab rail	yes
Bimini	2023
Cockpit cushions	2 comfort chairs and 2 x double seat cushions
Cockpit table	yes
Bathing platform	yes
Boarding ladder	stainless steel Renewed in 2023
Transom door	yes
Gangway	yes
Deck shower	yes
Anchor	Rocna (20 kg)
Anchor chain	90 mtr.
Windlass	electrical Lewmar (2024) with wireless control
Dinghy	rigid hull Talamex Silver Line (2020) with double aluminum hull
Outboard	Mercury 4-stroke 6 Pk (2021)
Outboard support	yes
Davits	stainless steel
Davits controls	manual
Sea railing	wire Reinforced scepter pots for the railing with a stainless plate
Grab rail (superstructure)	stainless steel
Railing side opening gates	yes
Pushpit	yes



BAVARIA 39 CRUISER

Pulpit	yes
Life raft (pers)	container 6
Last life raft survey	must be inspected again
Lifejackets	6 x
Danbuoy	Besto
Horn	yes
Fenders	yes
Mooring lines	yes
TV	yes
Radio-cd player	yes
Cockpit speakers	yes
Speakers in salon	yes
Clock - barometer	yes
Fire extinguisher	4 x
Latest extinguisher survey	up to 2023
Extra info	emergency fireworks equipment
Extra info	Sun protection cover for the dinghy 2021

RIGGING

Rigging	fractional 9/10
Standing rigging	wire 2006
Brand mast	Seldén
Material mast	aluminium
Spreaders	2 sets
Mainsail	furling mainsail Lion Sails (2011)
Stoway mast	yes
Genoa	Lion Sails (2011)
Genoa furler	Furlex
Genoa cover	(2022)
Reefing System	main in-mast furling
Backstay adjuster	tackle



BAVARIA 39 CRUISER

Boomvang	mechanical and tackle
Primary sheet winch	2 x Lewmar 44ST
Secondary sheet winch	2 x Lewmar 40ST
Extra info	genua spiboom
Extra info	mainsail and genoa were checked and completely serviced in 2022



BAVARIA 39 CRUISER



BAVARIA 39 CRUISER



BAVARIA 39 CRUISER



BAVARIA 39 CRUISER



BAVARIA 39 CRUISER



BAVARIA 39 CRUISER



BAVARIA 39 CRUISER



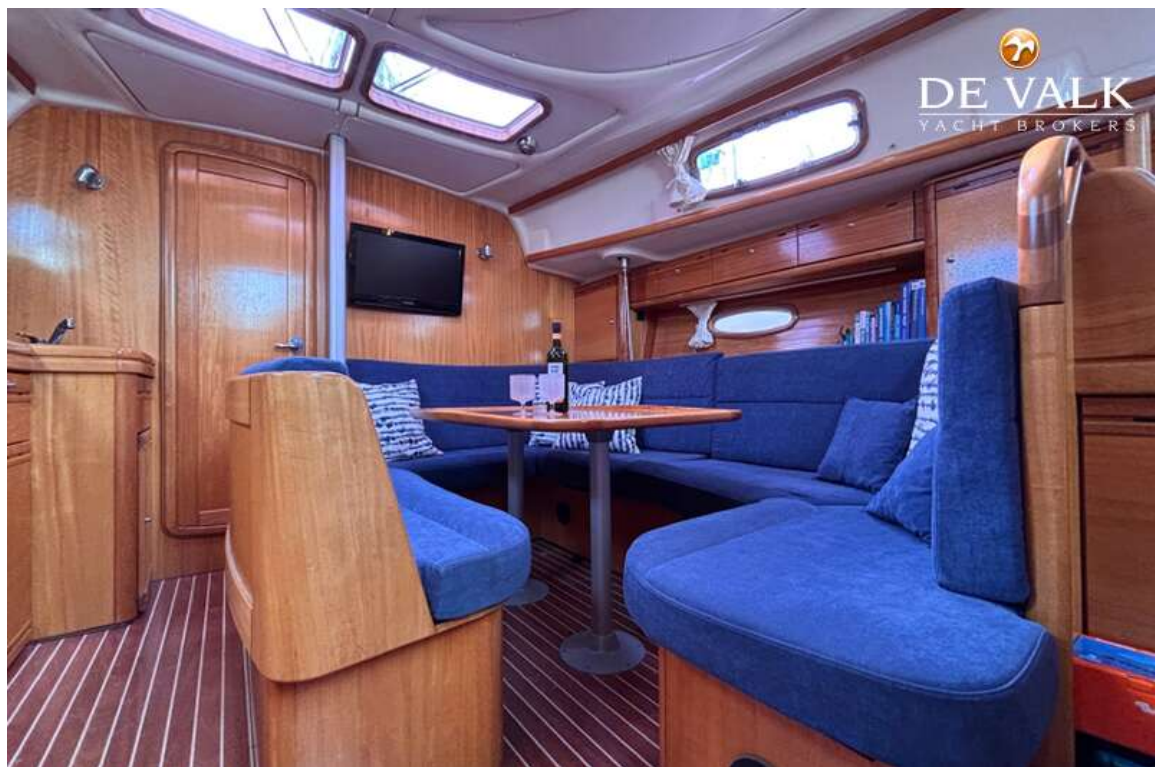
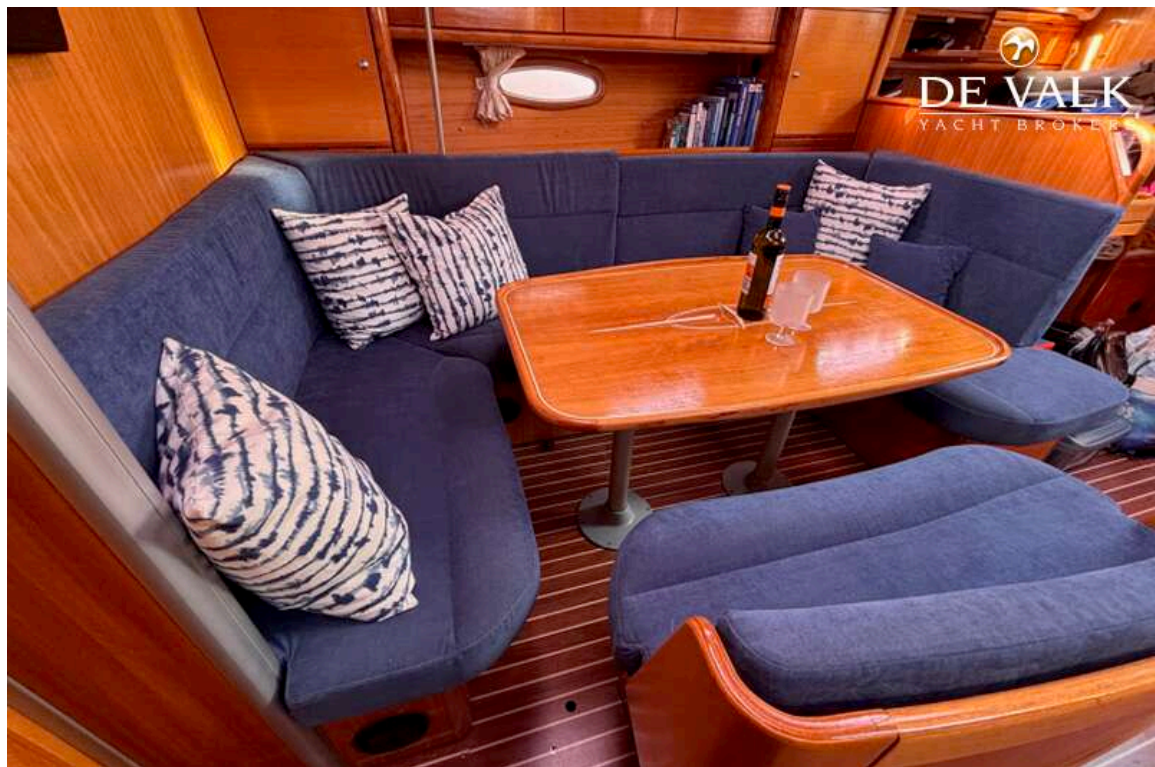
BAVARIA 39 CRUISER



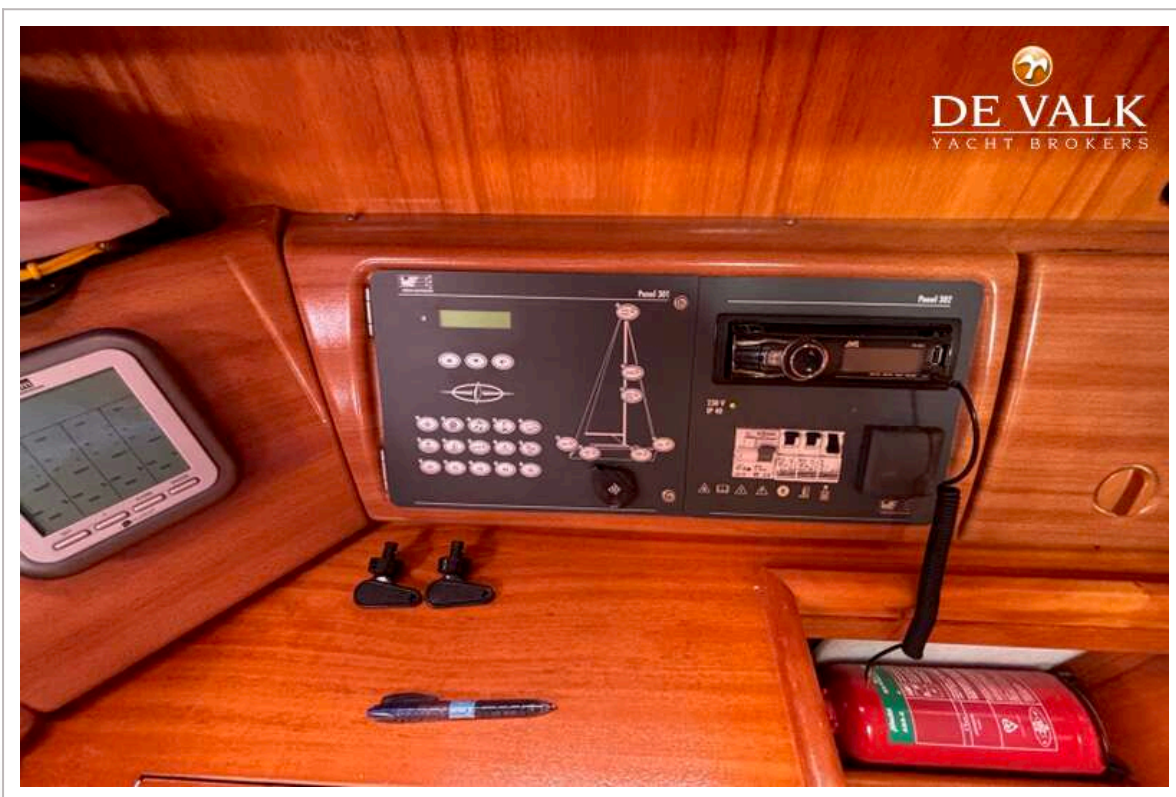
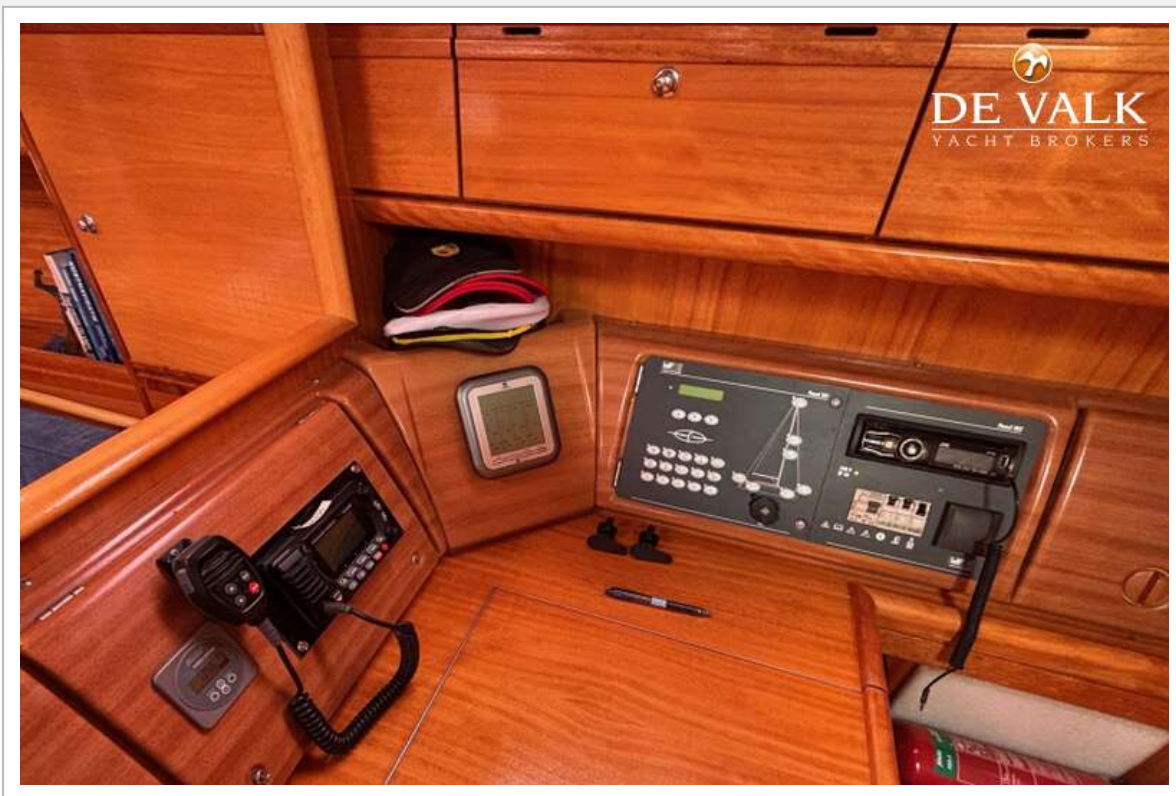
BAVARIA 39 CRUISER



BAVARIA 39 CRUISER



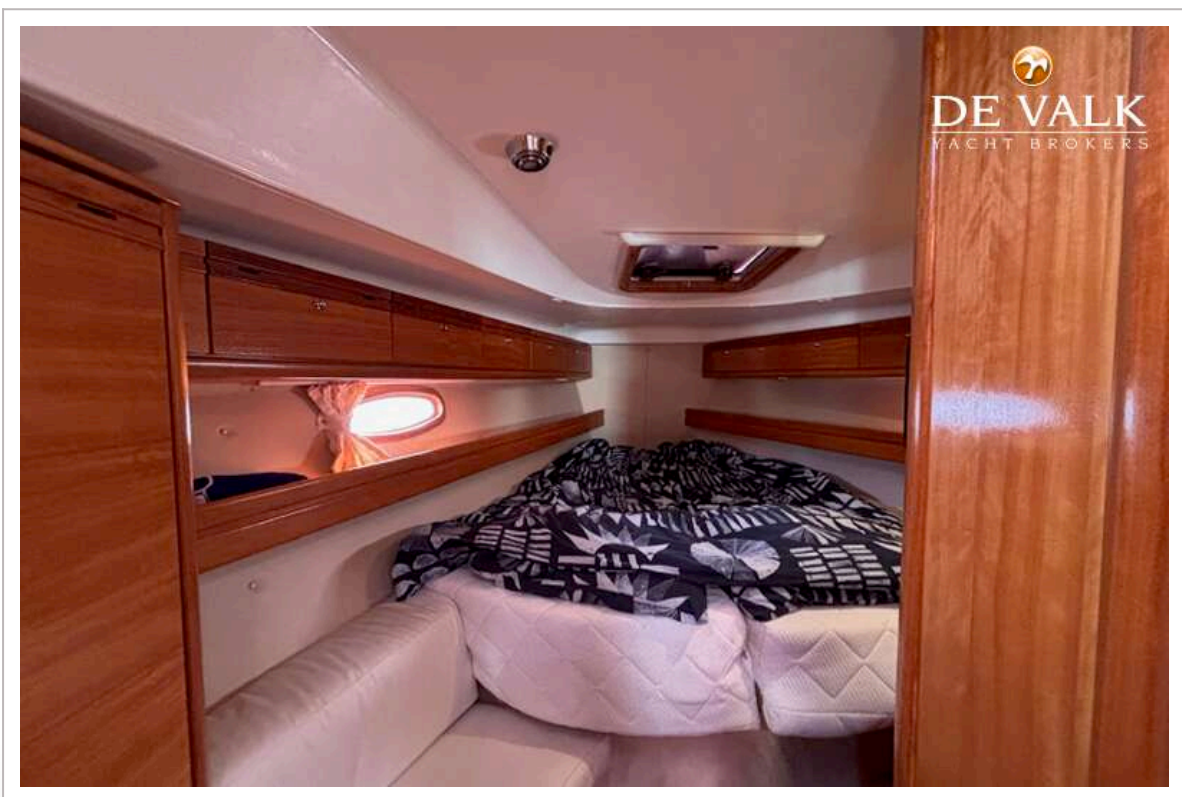
BAVARIA 39 CRUISER



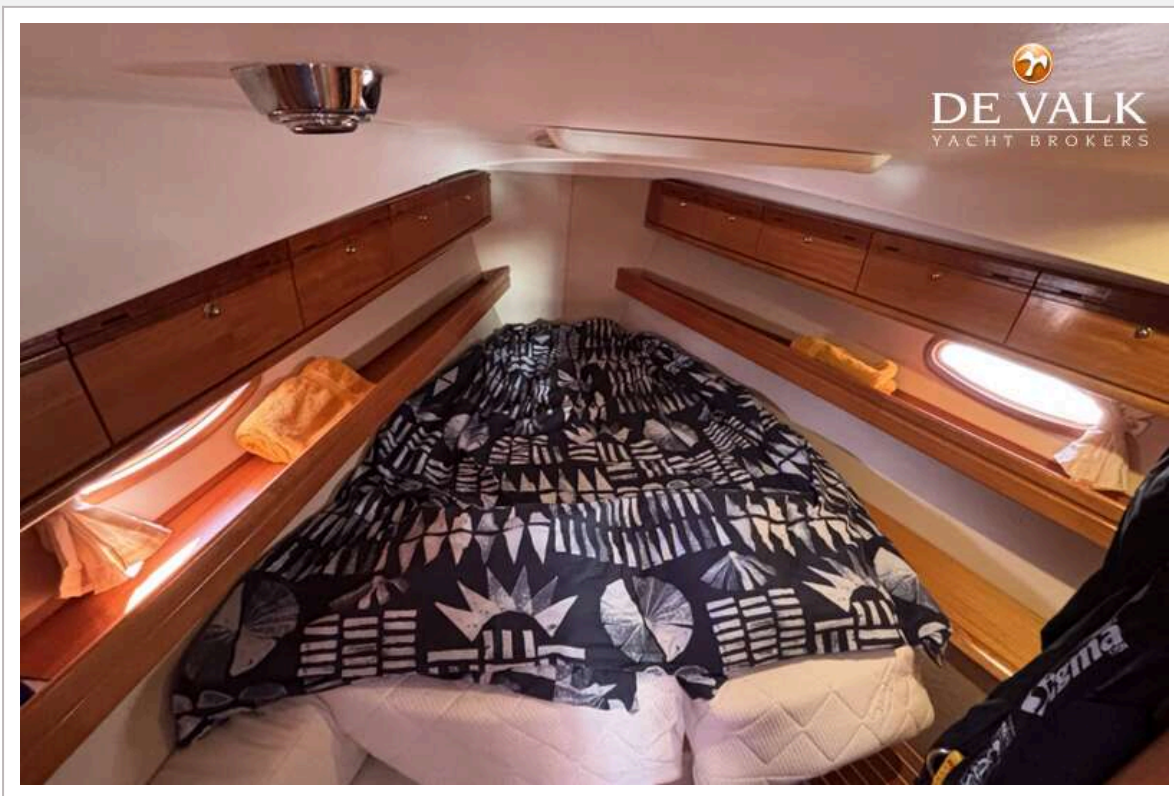
BAVARIA 39 CRUISER



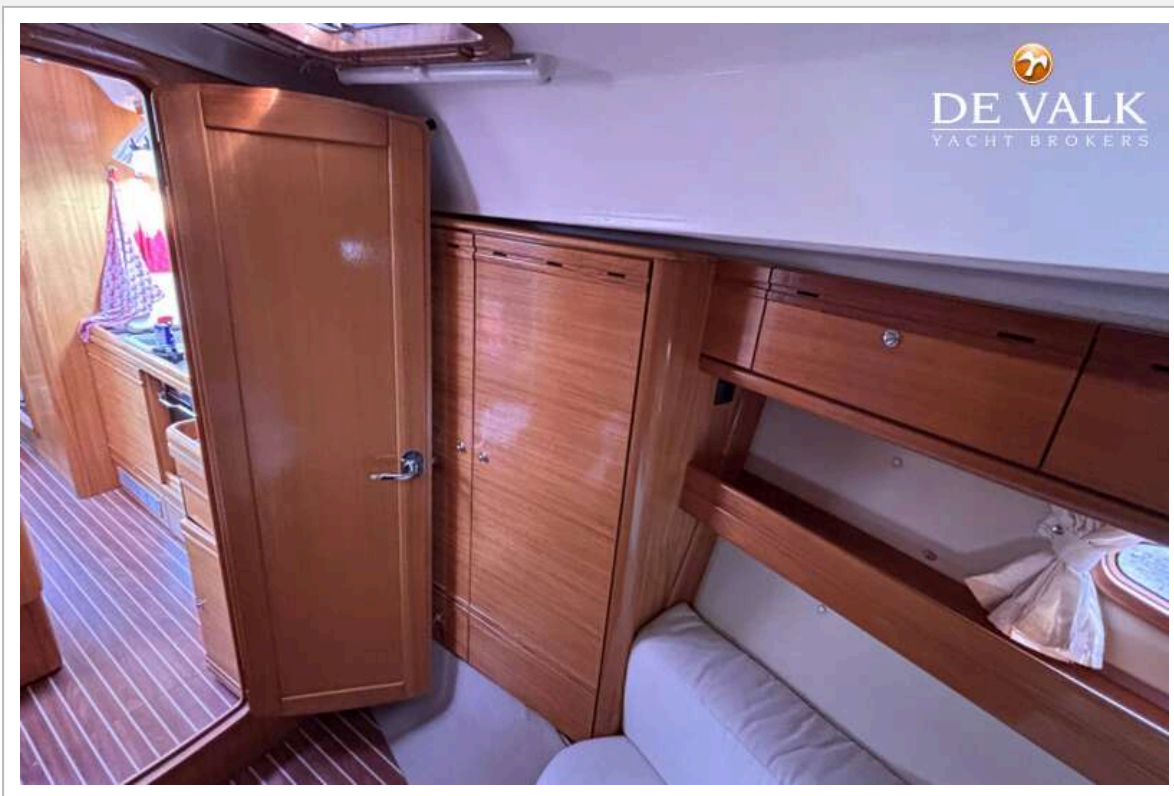
BAVARIA 39 CRUISER



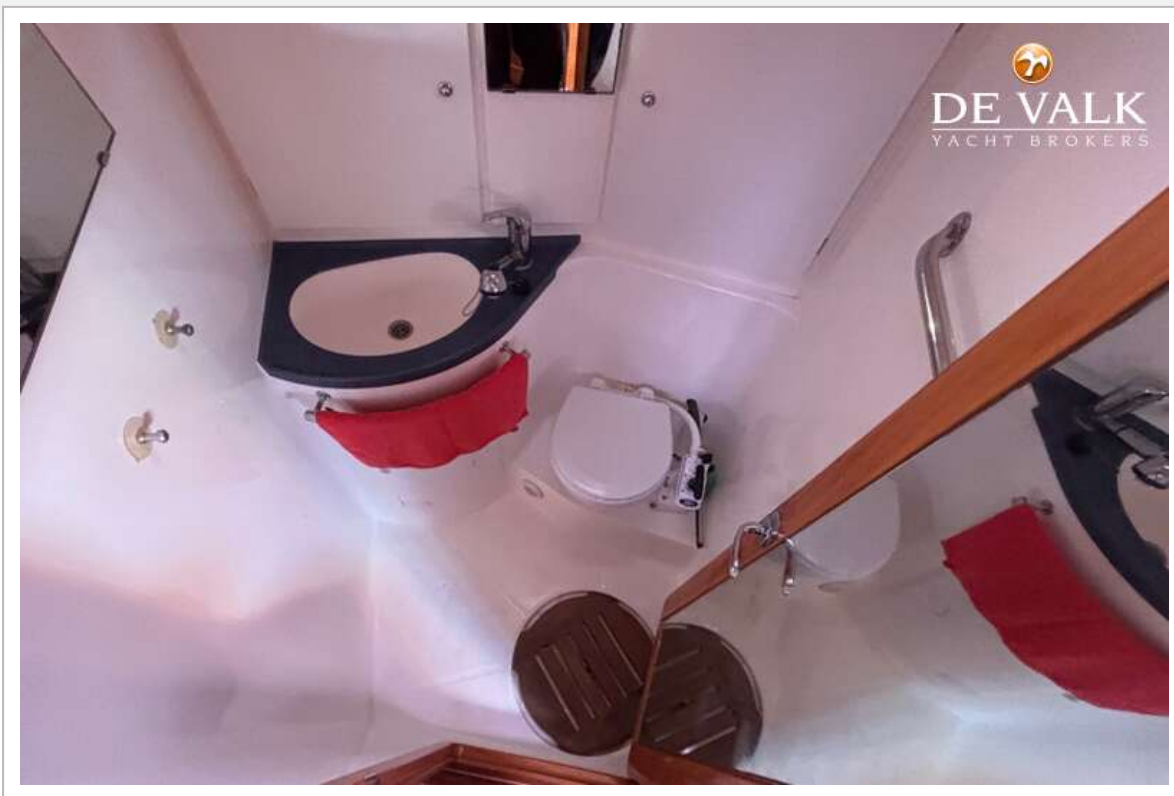
BAVARIA 39 CRUISER



BAVARIA 39 CRUISER



BAVARIA 39 CRUISER



BAVARIA 39 CRUISER



BAVARIA 39 CRUISER



BAVARIA 39 Cruiser / 3 CAB.



BAVARIA 39 CRUISER

