



DE VALK
YACHT BROKERS



MOONEN 110



DE VALK
YACHT BROKERS

MOONEN 110

BROKER'S COMMENTS

The MOONEN 110 is an exceptionnally pristine mega yacht. This newest 2023 Moonen's creation is made to make you relax and enjoy the sun and sea however you want; thanks to the spacious interior and comfortable exterior. This MOONEN 110 is known for its luxurious looks but mostly for its incredible safety which allows a calm and fun navigation to wherever you desire.

Eric Lamers

SPECIFICATIONS

| | | | |
|---------------------|----------------------------------|----------------|---------------------------------|
| Dimensions | 34.04 x 7.50 x 2.00 (m) | Builder | Moonen |
| Built | 2023 | Cabins | 5 |
| Material | Steel | Berths | 10 |
| Engine(s) | 2 x Caterpillar C18 ACERT diesel | Hp/Kw | 2 x 608.00 (hp), 447.49 (kw) |
| Asking price | € 13.000.000 (VAT Not paid) | Lying | elsewhere / Not at sales office |

CONTACT

| | | | |
|---------------------|--|------------------|-------------------|
| Sales office | De Valk Antibes | Telephone | +33 492 91 0202 |
| Address | 2, Avenue de Verdun 06600 Antibes FR | E-mail | antibes@devalk.nl |

DISCLAIMER

These particulars are given in good faith as supplied but cannot be guaranteed.



GENERAL

| | |
|-------------------------------------|----------------------------------|
| Model | MOONEN 110 |
| Type | motor yacht |
| LOA (m) | 34,04 |
| Beam (m) | 7,50 |
| Draft (m) | 2,00 |
| Headroom (m) | 2,15 |
| Year built | 2023 |
| Builder | Moonen |
| Country | The Netherlands |
| Designer | Rene van der Velden Yacht Design |
| Gross tonnage | 279 |
| CE norm | A |
| Hull material | steel |
| Hull colour | Dark blue |
| Hull shape | deep-V |
| Superstructure material | aluminium |
| Deck material | steel |
| Deck finish | teak |
| Superstructure deck finish | teak |
| Cockpit deck finish | teak |
| Window material | double glazing |
| Insulation | yes |
| Fuel tank (litre) | 27,600 |
| Fuel tank 2 (litre) | yes |
| Level indicator (fuel tank) | yes |
| Fuel daytank (litre) | yes |
| Freshwater tank (litre) | yes |
| Level indicator (freshwater) | yes |
| Blackwater tank (litre) | yes |
| Level indicator (blackwater) | yes |



| | |
|-----------------------------|-----|
| Blackwater tank extraction | yes |
| Greywater tank (litre) | yes |
| Level indicator (greywater) | yes |
| Inside helm position | yes |
| Flybridge helm position | yes |

ACCOMMODATION

| | |
|--------------------------|---|
| Cabins | 5 |
| Berths | 10 |
| Crew cabin | 1x Captain 2x crew (5/6 crew in total) 3 |
| Crew berths | 6 |
| Interior | mahogany |
| Layout | yes |
| Floor | wood With spacious interiors made of carpet |
| Open cockpit | yes |
| Aft deck | yes |
| Pilot house | yes |
| Deck saloon | yes |
| Pilot house/deck saloon | yes |
| Saloon | yes |
| Headroom saloon (m) | 2,15 |
| Heating | yes |
| Air-conditioning | reverse cycle airco |
| Navigation center | yes |
| Chart table | yes |
| Aft Cabin | yes |
| Dining room | yes |
| Dinette | yes |
| Sliding door to cockpit | yes |
| Sliding door to aft deck | yes |
| Galley | purified fresh water tap installed inside |



| | |
|-----------------------|---|
| Countertop | yes |
| Sink | stainless steel |
| Cooker | electric |
| Oven | yes |
| Extractor | yes |
| Microwave/oven combi | yes |
| Fridge | yes |
| Freezer | yes |
| Wine cooler | yes |
| Hot water system | 220V + engine |
| Water pressure system | electrical |
| Dishwasher | yes |
| Hot water tap | yes |
| Ice maker | yes |
| Coffee maker | yes |
| Crockery | yes |
| Owners cabin | double bed 39 sqm |
| Bed length (m) | 2,20 |
| Wardrobe | hanging/drawers/shelves |
| Bathroom | en suite |
| Toilet | en suite |
| Toilet system | electric |
| Wash basin | in the bathroom |
| Shower | en suite |
| Extra info | 55" TV, 5.1 surround sound & iPad controls + 2.0 stereo sound |
| Guest cabin 1 | double bed |
| Bed length (m) | 2,20 |
| Wardrobe | drawers and shelves |
| Bathroom | en suite |
| Toilet | en suite |
| Toilet system | electric |
| Wash basin | in the bathroom |



| | |
|-----------------|----------------------------------|
| Shower | en suite |
| Extra info | 2.0 stereo sound & iPad controls |
| Guest cabin 2 | double bed |
| Bed length (m) | 2,20 |
| Wardrobe | drawers and shelves |
| Bathroom | en suite |
| Toilet | en suite |
| Toilet system | electric |
| Wash basin | in the bathroom |
| Shower | en suite |
| Extra info | 2.0 stereo sound & iPad controls |
| Guest cabin 3 | twin single |
| Bed length (m) | 2,20 |
| Wardrobe | drawers and shelves |
| Bathroom | en suite |
| Toilet | en suite |
| Toilet system | electric |
| Wash basin | in the bathroom |
| Shower | en suite |
| Extra info | 2.0 stereo sound & iPad controls |
| Guest cabin 4 | twin single |
| Bed length (m) | 2,20 |
| Wardrobe | drawers and shelves |
| Bathroom | en suite |
| Toilet | en suite |
| Toilet system | electric |
| Wash basin | in the bathroom |
| Shower | en suite |
| Extra info | 2.0 stereo sound & iPad controls |
| Crew cabin(s) | double beds All 3 cabins |
| Bathroom (crew) | en suite |
| Toilet (crew) | en suite |



| | |
|---------------------------|--|
| Toilet system | electric |
| Wash basin | in the bathroom |
| Shower (crew) | en suite |
| Extra info | 43" TV, 2.0 stereo sound & iPad controls |
| Washing machine | yes |
| Dryer | yes |
| Ironing facilities | yes |
| Sky lounge | yes |
| Flybridge | yes |
| Wet bar | + grill |

MACHINERY

| | |
|------------------------------|-------------|
| No of engines | 2 |
| Make | Caterpillar |
| Type | C18 ACERT |
| HP | 608 |
| kW | 447.49 |
| Fuel | diesel |
| Year installed | 2023 |
| Maximum speed (kn) | 13,4 |
| Cruising speed (kn) | 12 |
| Consumption (l/hr) | 160 |
| Range (nm) | 3500 |
| Engine cooling system | aircooling |
| Shaft seal | yes |
| Engine controls | electrical |
| Gearbox | hydraulic |
| Secondary engine | diesel |
| Engine controls | electrical |
| Homer | yes |
| Bowthruster | yes |



| | |
|--------------------------|-------------------|
| Gearbox | hydraulic |
| Generator | silent separator |
| Generator 2 | yes |
| Battery charger | yes |
| Inverter | yes |
| Battery charger/inverter | yes |
| Shorepower | with cable |
| Insulation transformer | yes |
| Watermaker | yes |
| Stabilizers | CMC electric fins |

NAVIGATION

| | |
|-----------------------|-----|
| Compass | yes |
| Compass on flybridge | yes |
| Multi control display | yes |
| Depth sounder | yes |
| Depth sounder/log | yes |
| Log | yes |
| Windset | yes |
| Repeater | yes |
| Fish finder | yes |
| VHF | yes |
| VHF handheld | yes |
| Autopilot | yes |
| Radar | yes |
| GPS | yes |
| Plotter | yes |
| Weather receiver | yes |
| AIS receiver | yes |
| AIS transponder | yes |
| AIS transceiver | yes |



| | |
|-------------------|-----|
| Radio receiver | yes |
| Transmitter | yes |
| EPIRB | yes |
| Navigation lights | yes |
| Searchlight | yes |
| Loudhailer | yes |

EQUIPMENT

| | |
|----------------------------|-----------------|
| Cockpit cover | yes |
| Dodger | yes |
| Sun awning | yes |
| Cockpit cushions | yes |
| Cockpit table | yes |
| Cockpit chairs | yes |
| Bathing platform | yes |
| Boarding ladder | yes |
| Bow ladder | yes |
| Gangway | yes |
| Deck shower | yes |
| Anchor | yes |
| Anchor chain | yes |
| Chain counter | yes |
| Windlass | electrical |
| Windlass aft | electrical |
| Deck wash | yes |
| Davits | stainless steel |
| Davits controls | electrical |
| Sea railing | steel |
| Grab rail (superstructure) | steel |
| Life raft | container 4 |
| Lifebuoy | yes |



| | |
|-----------------------------|----------|
| Wiper | yes |
| Clearview window | yes |
| Horn | electric |
| Mooring lines | yes |
| TV | 2 |
| Satellite | yes |
| iPod connection | yes |
| Cockpit speakers | yes |
| Fire extinguisher | yes |
| Extinguisher in engine room | yes |



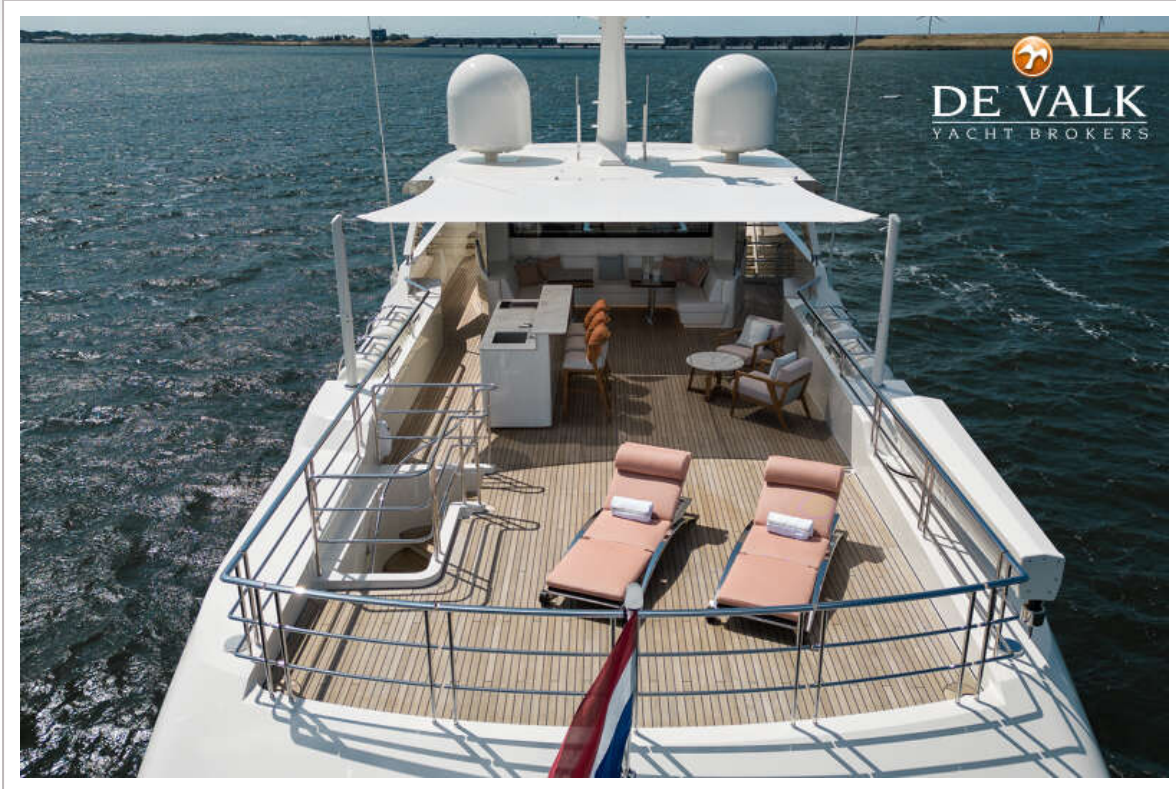
MOONEN 110



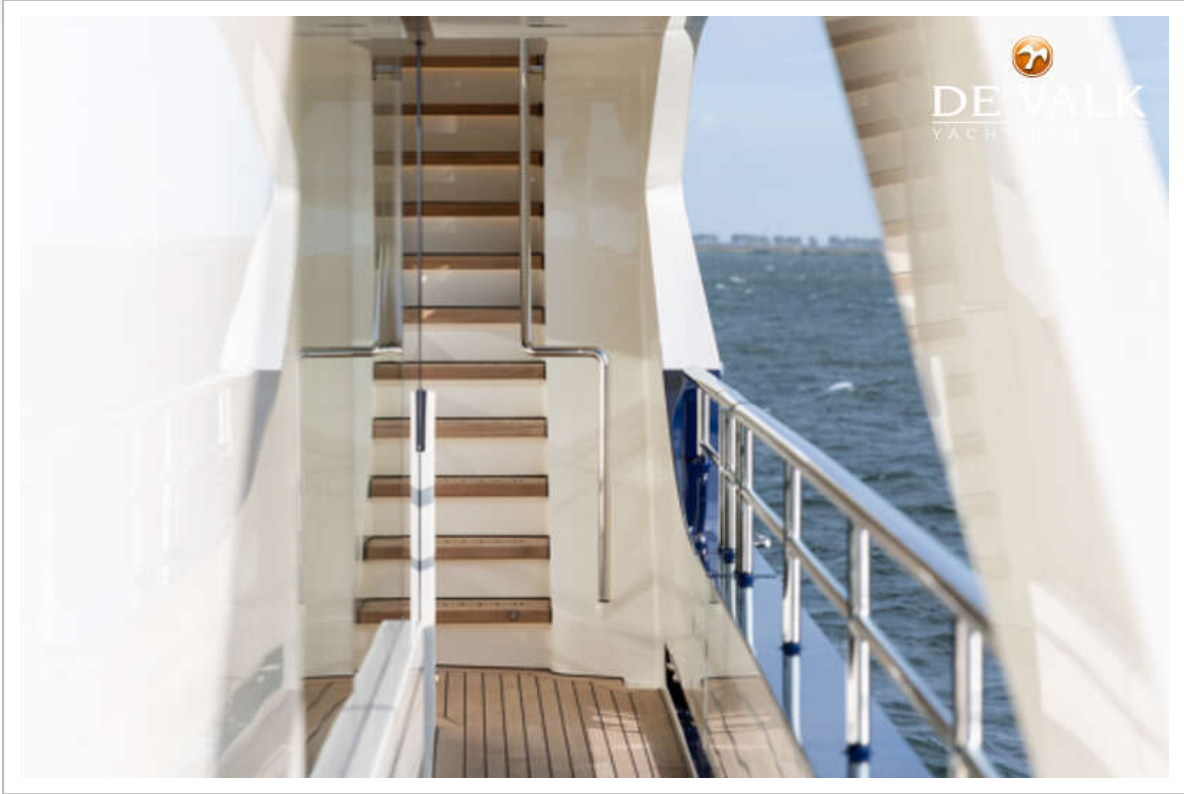
MOONEN 110



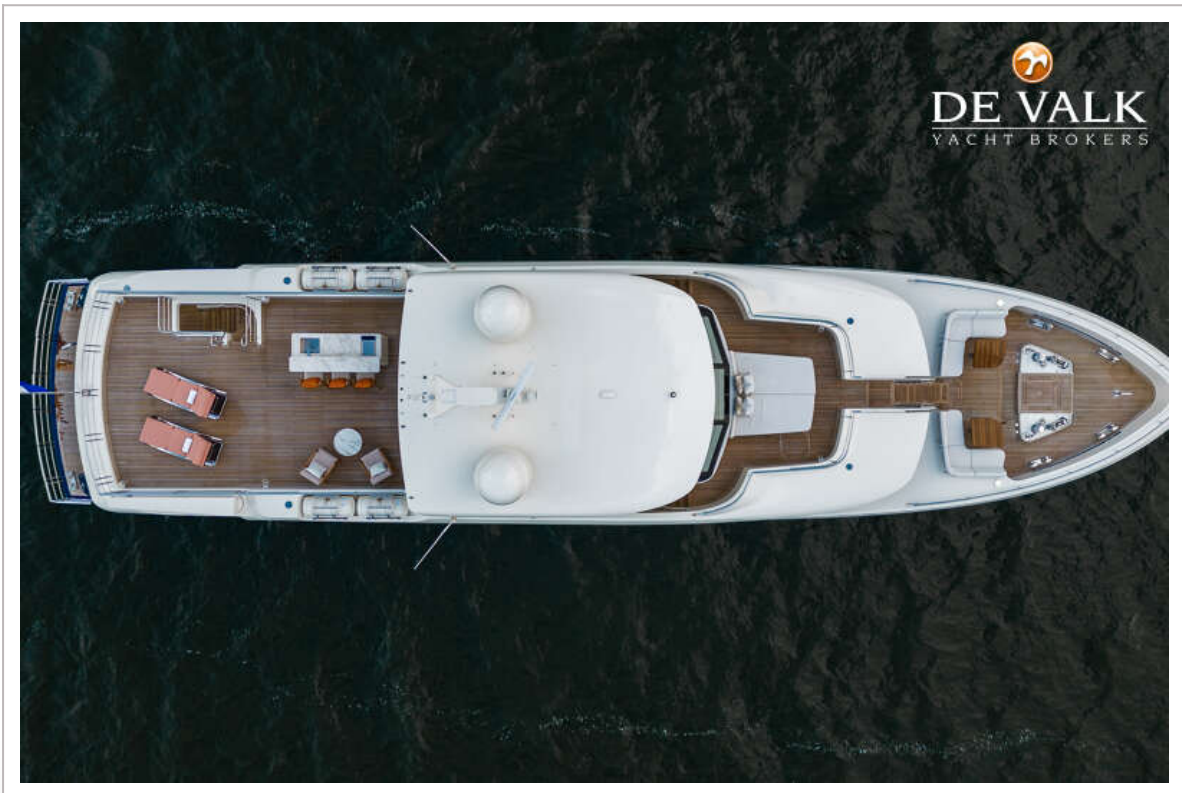
MOONEN 110



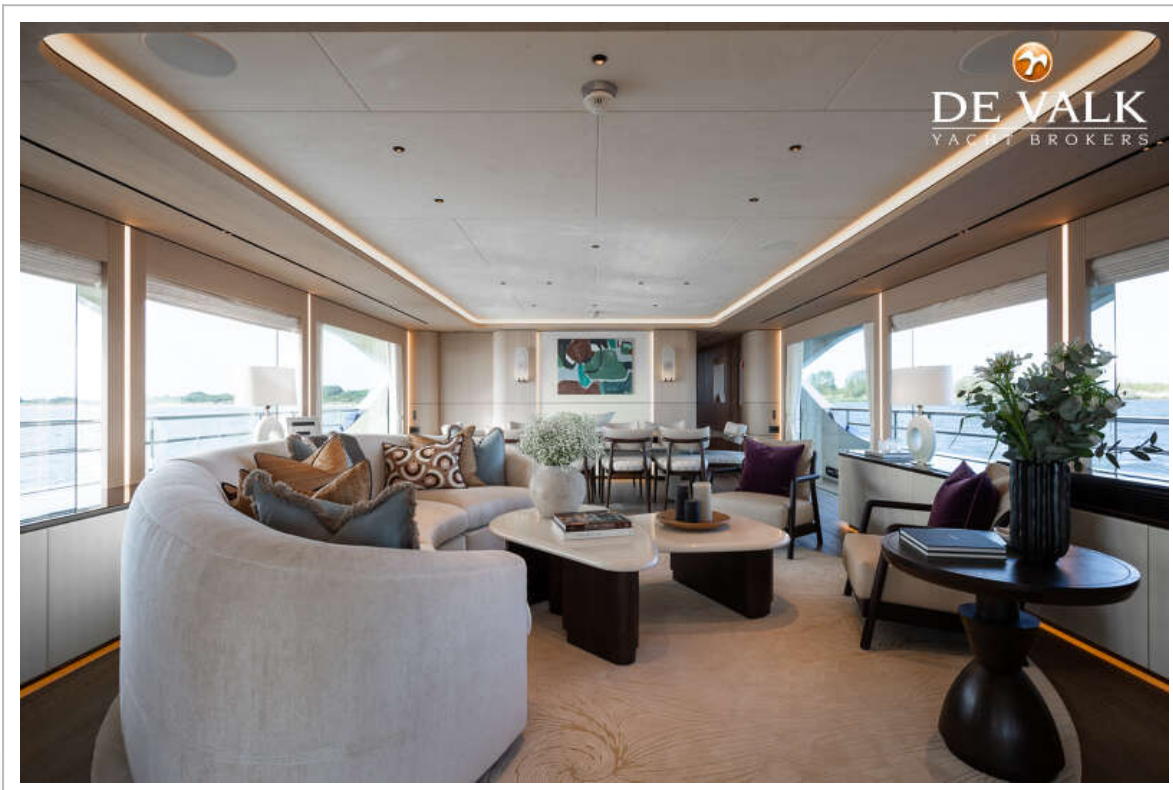
MOONEN 110



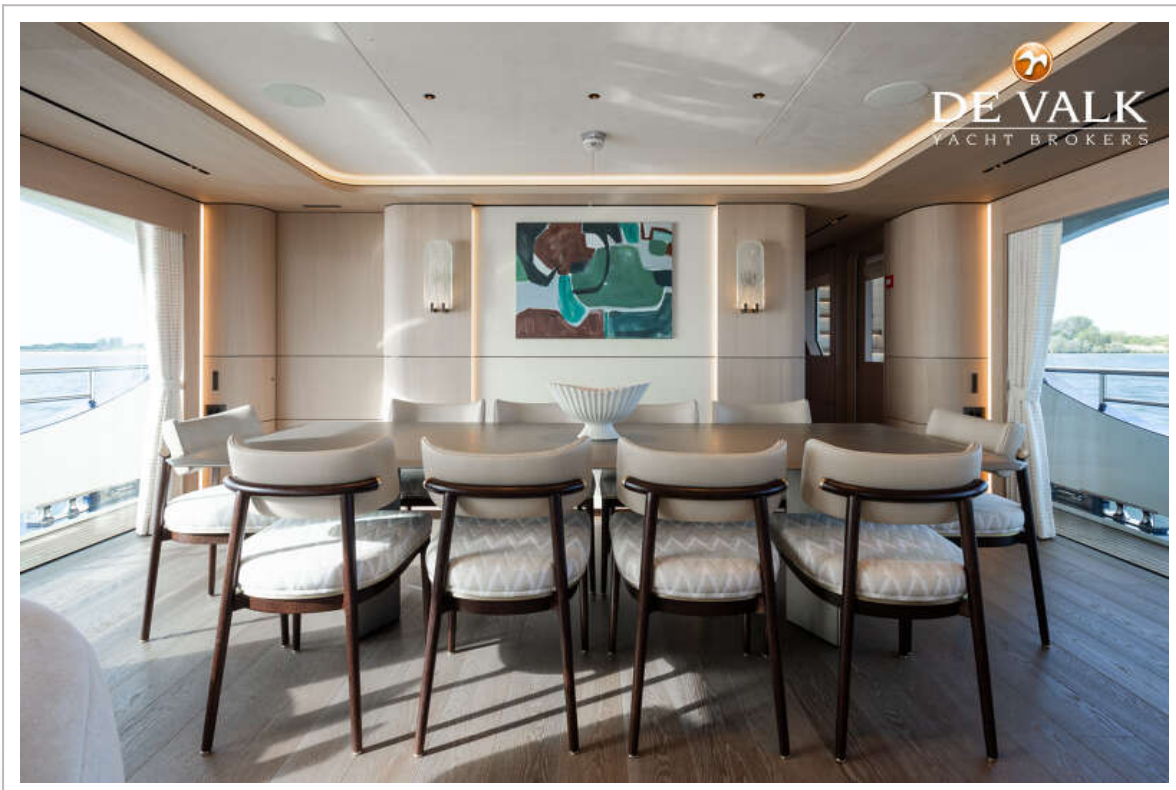
MOONEN 110



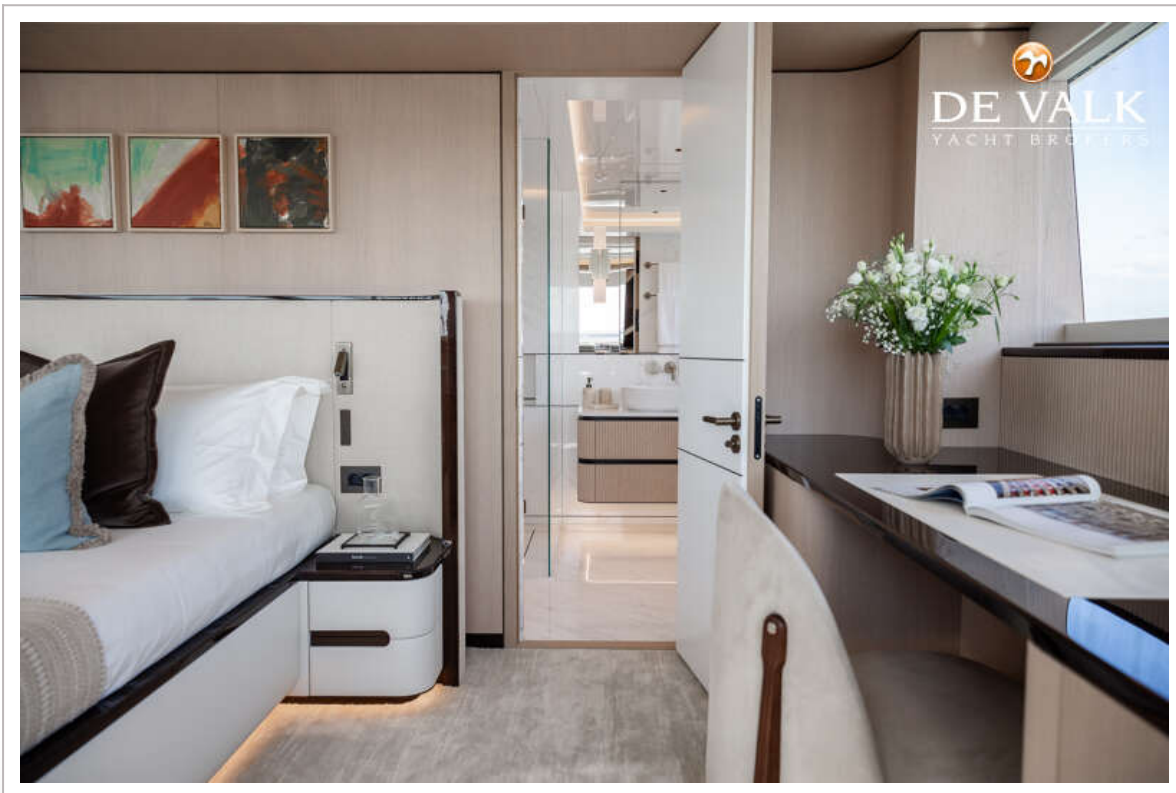
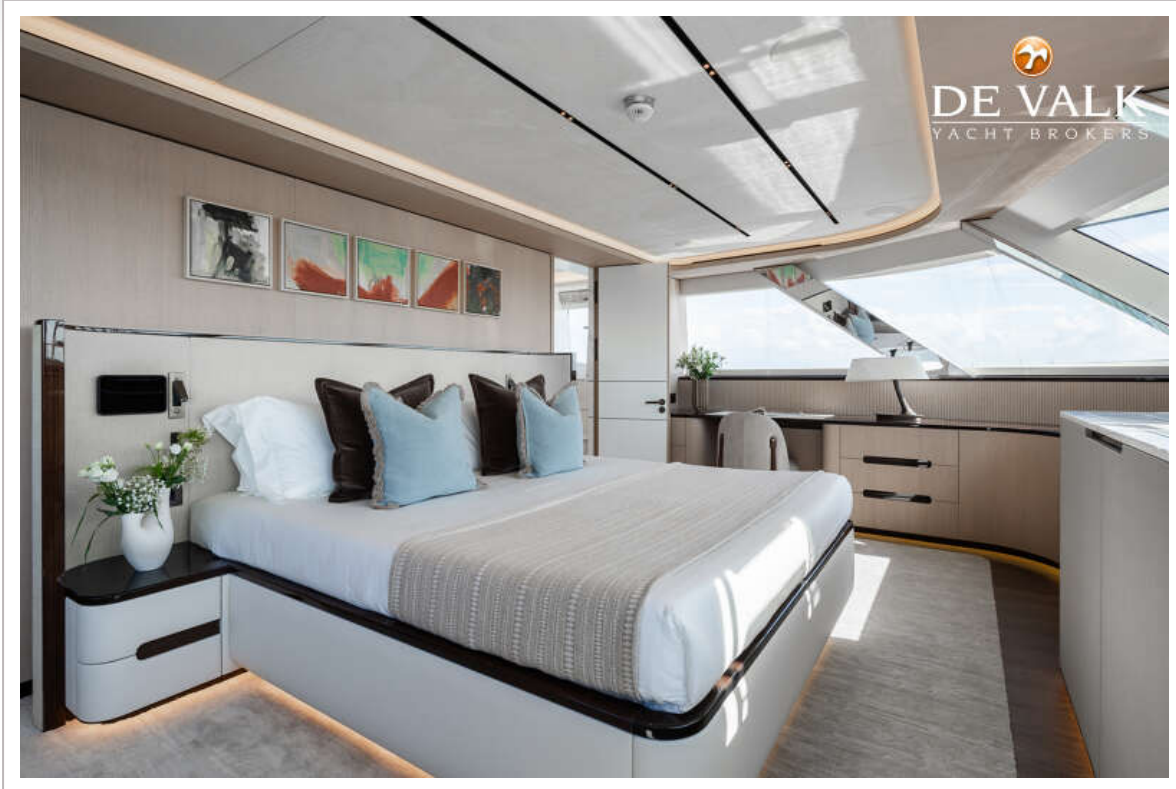
MOONEN 110

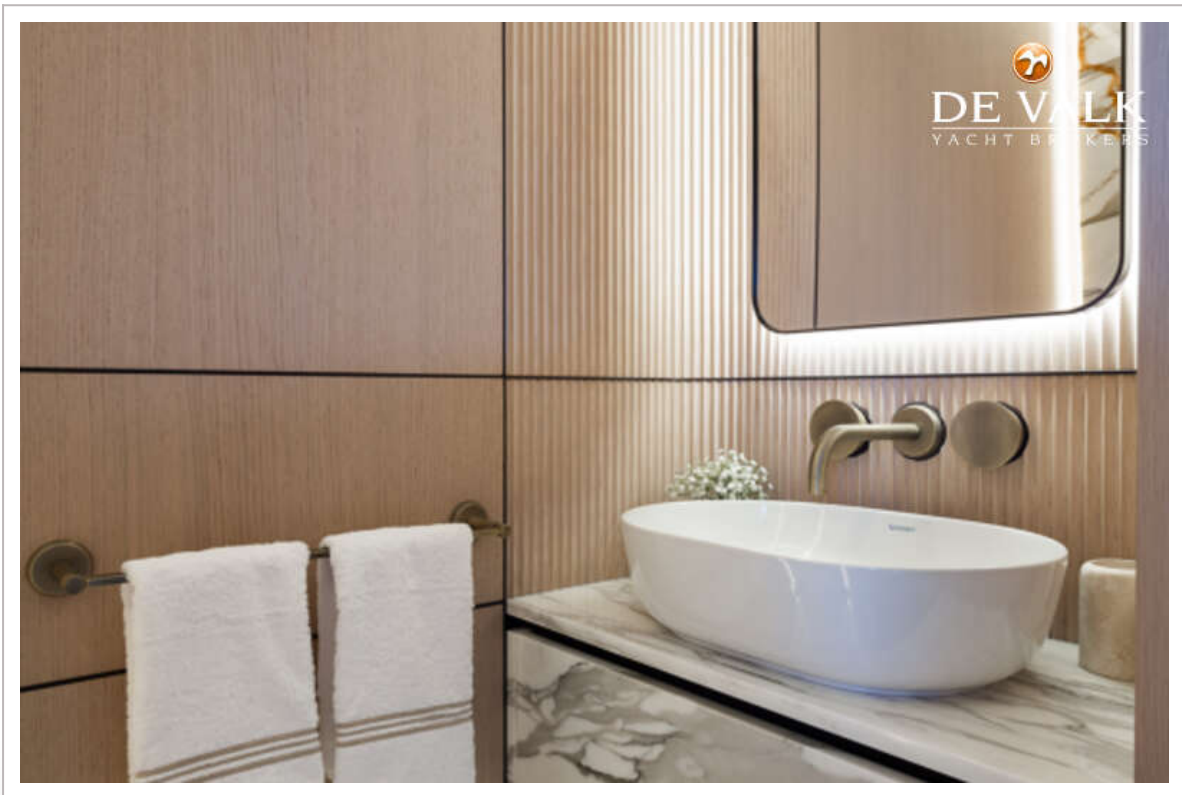
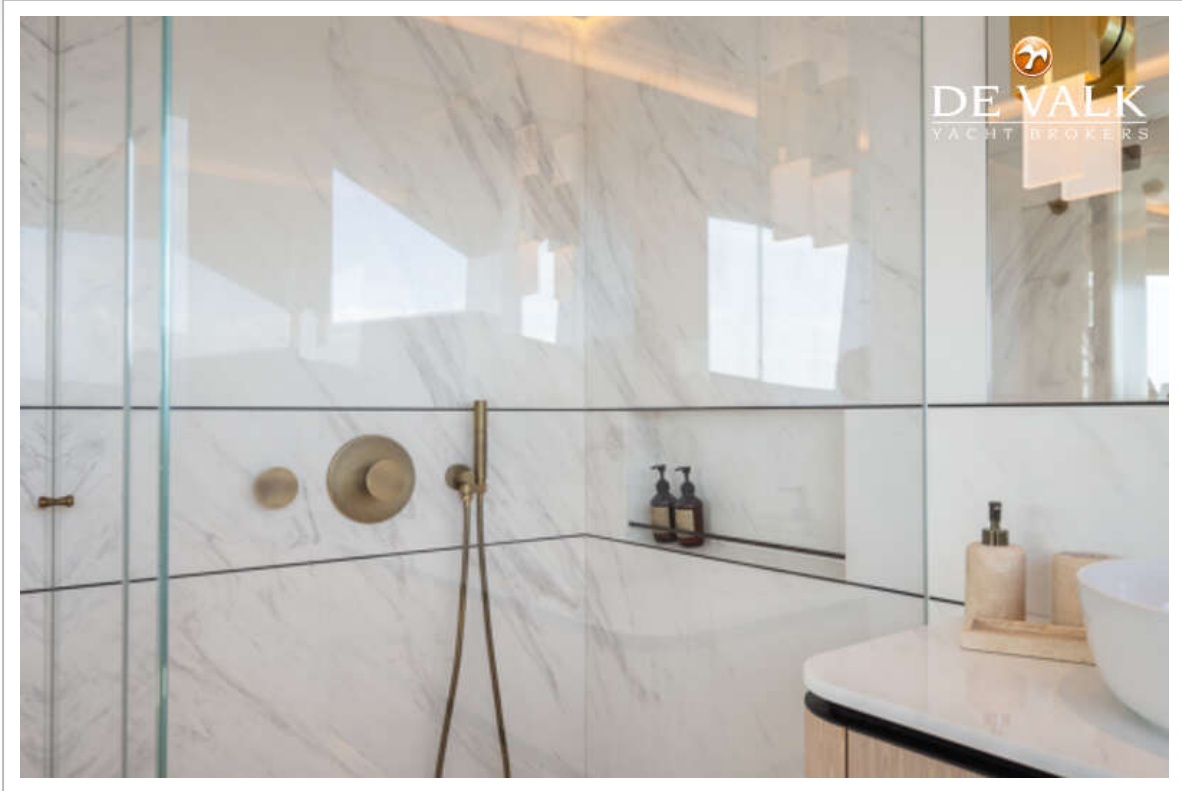


MOONEN 110

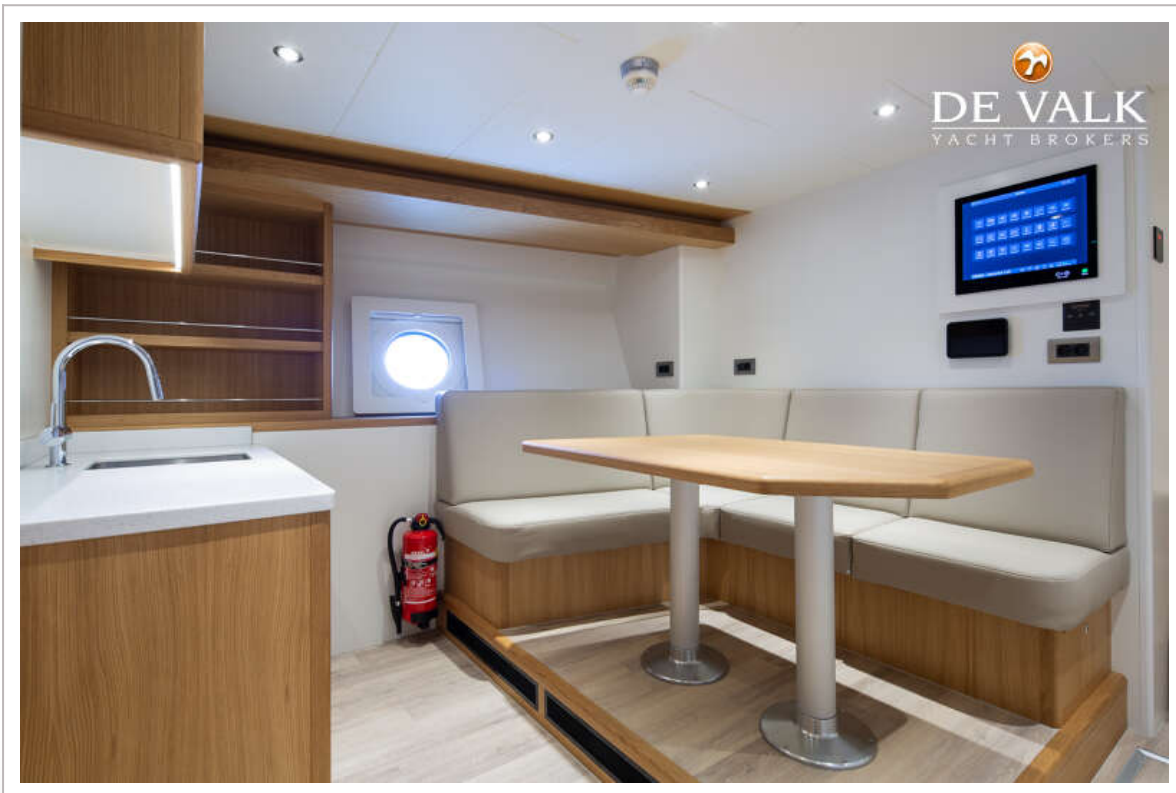
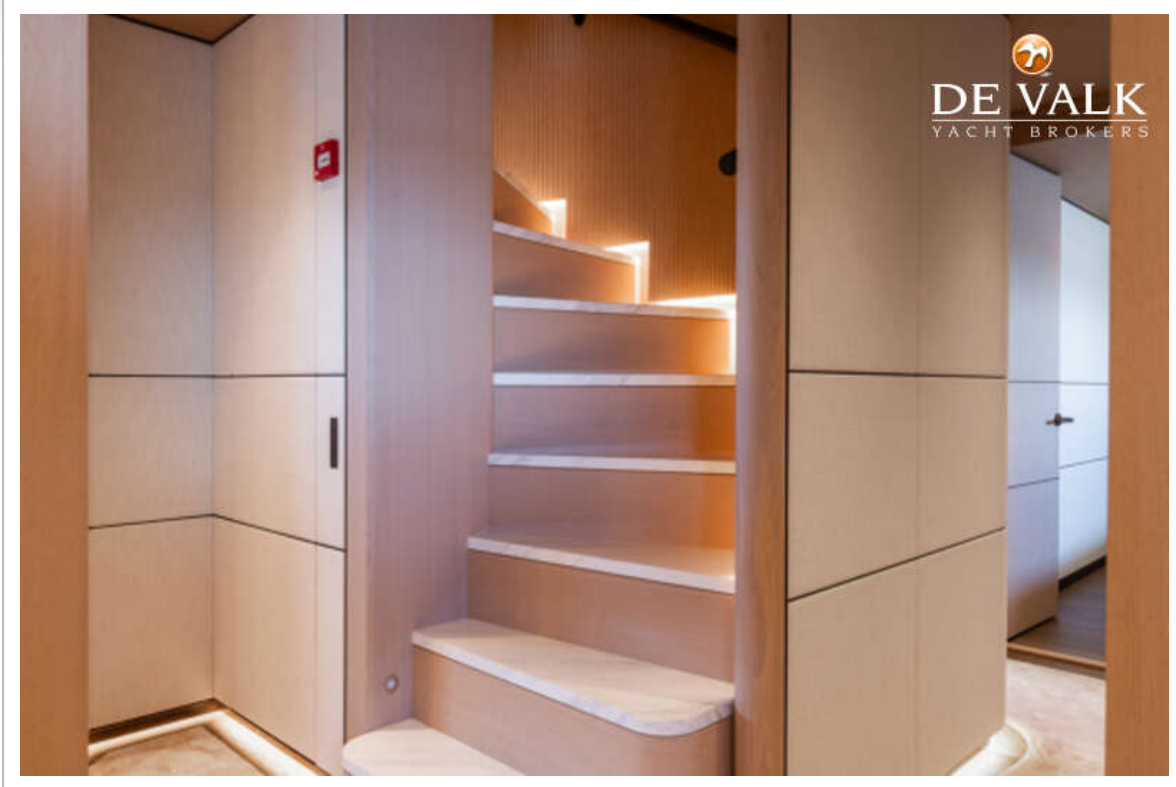


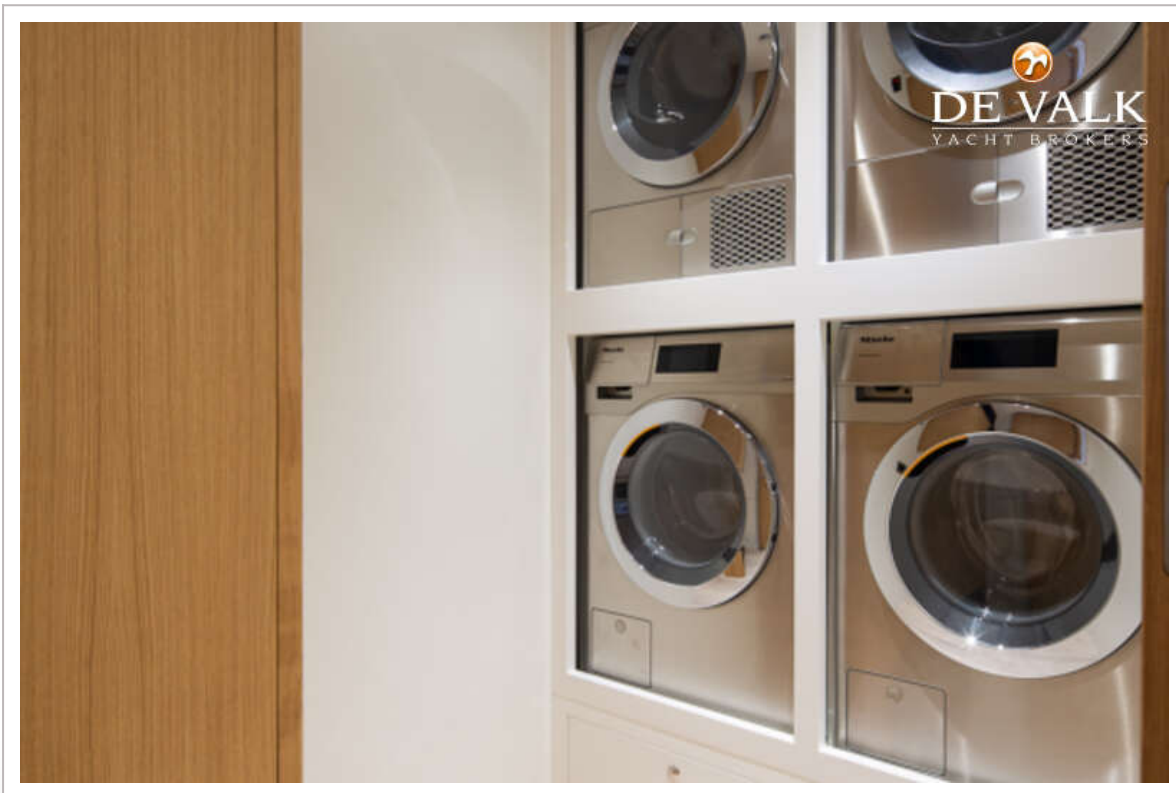
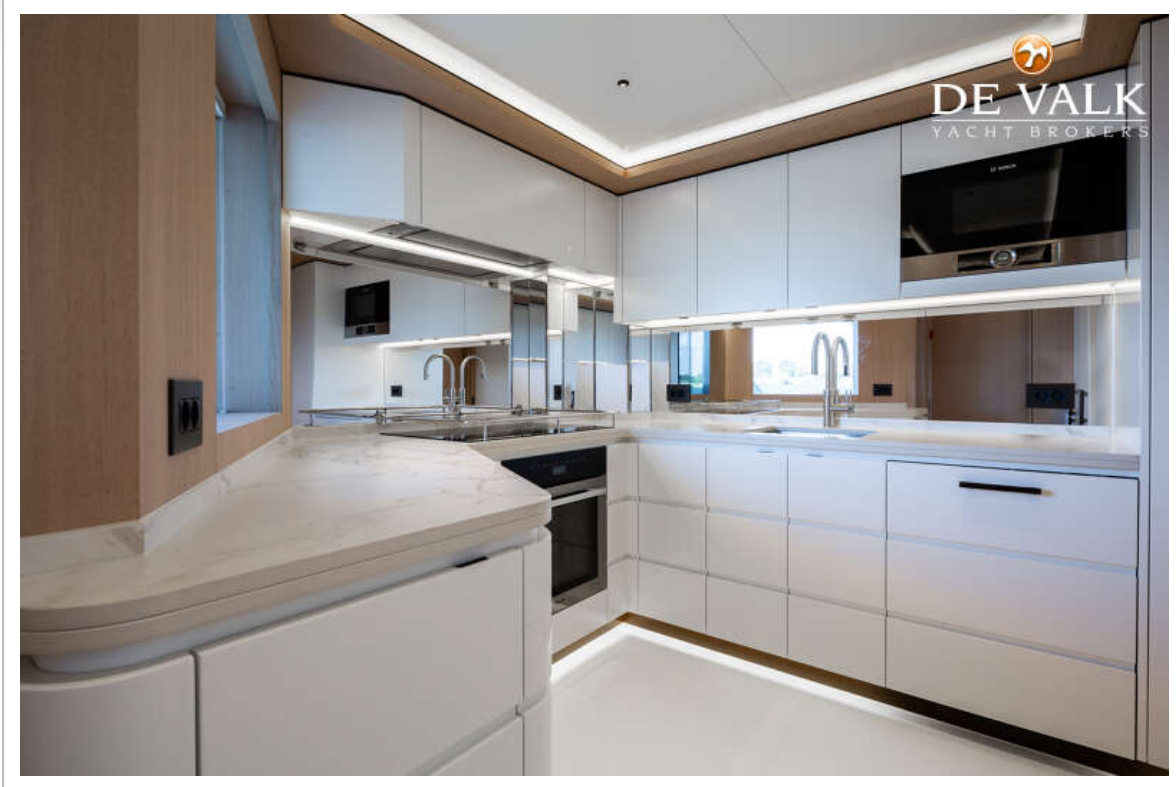
MOONEN 110



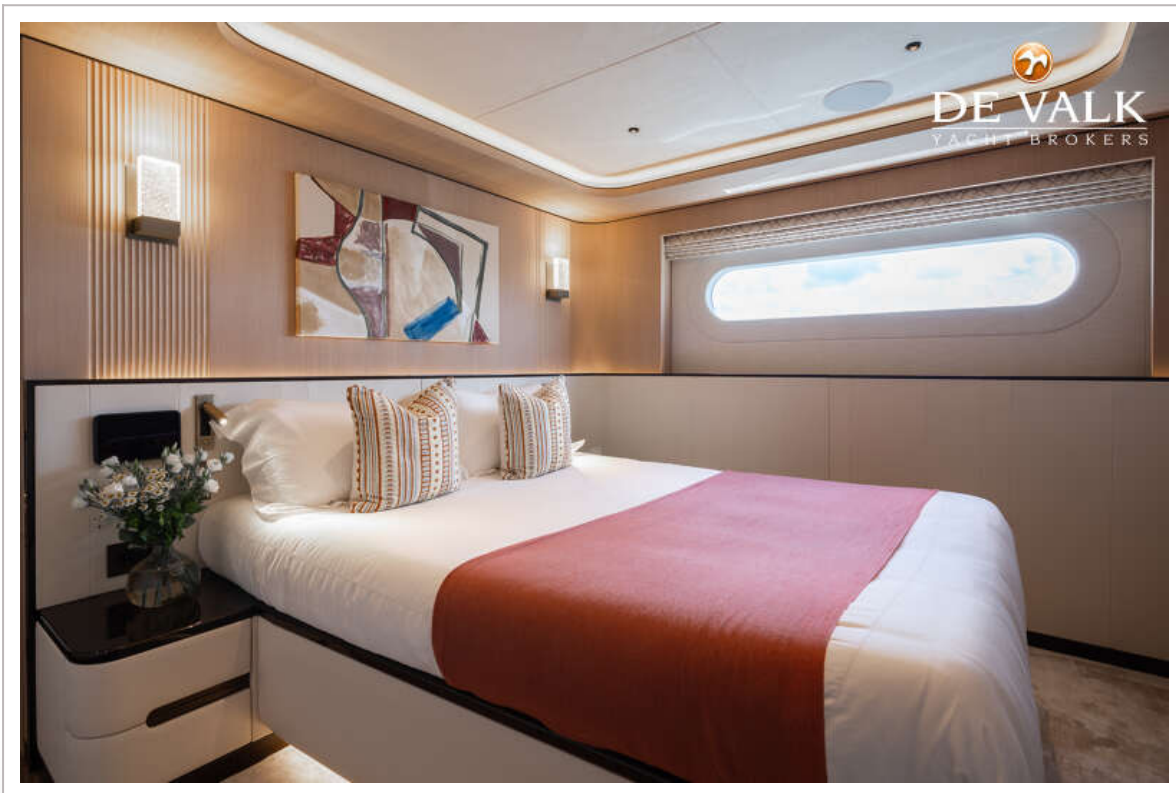
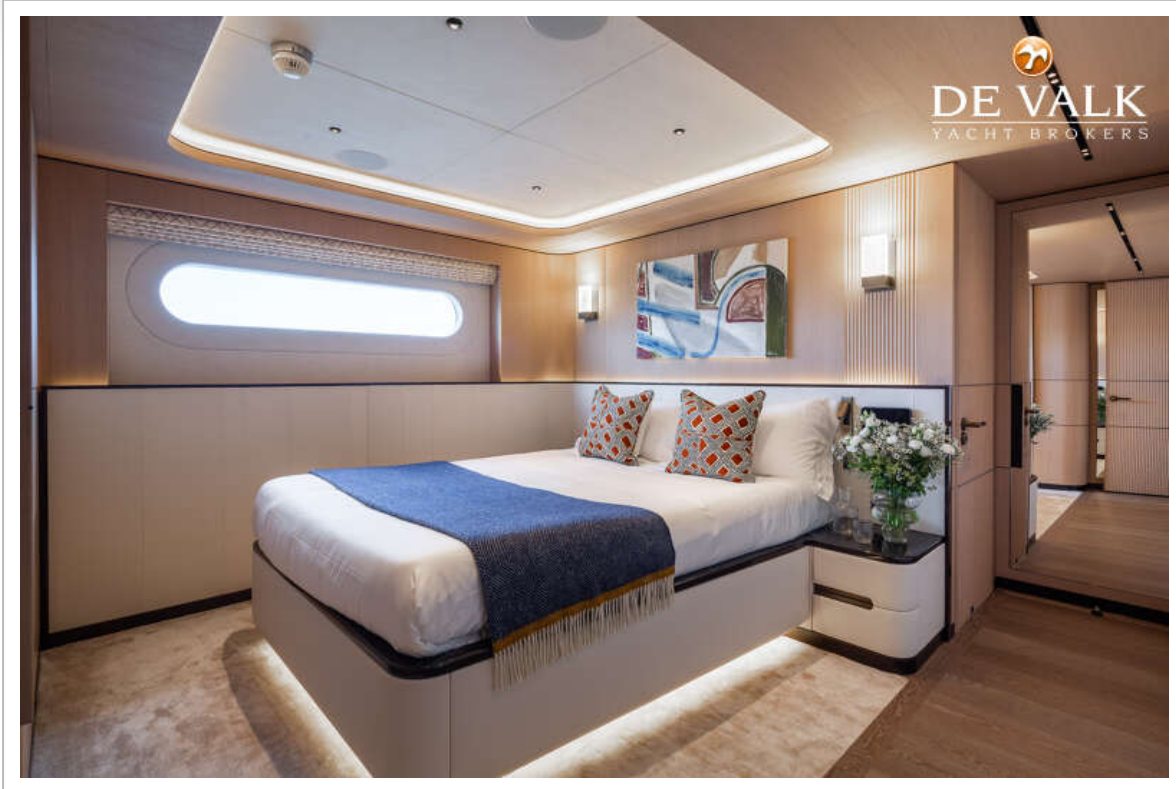


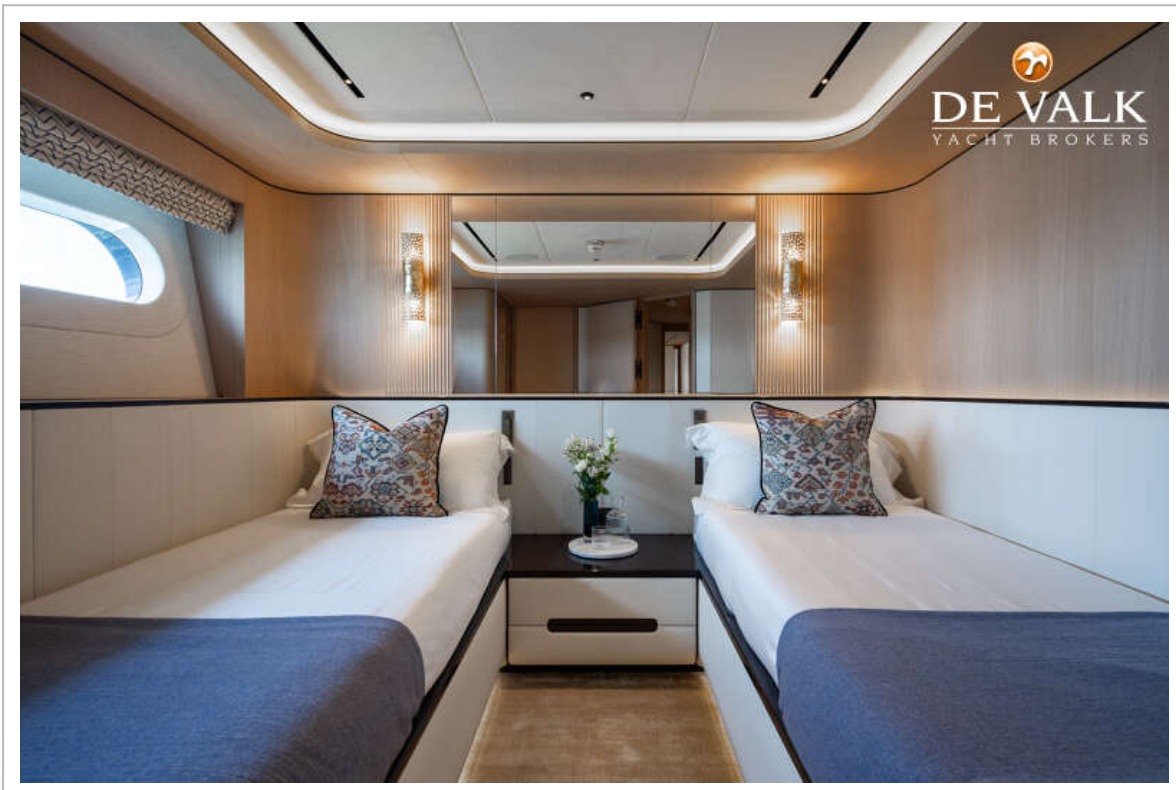
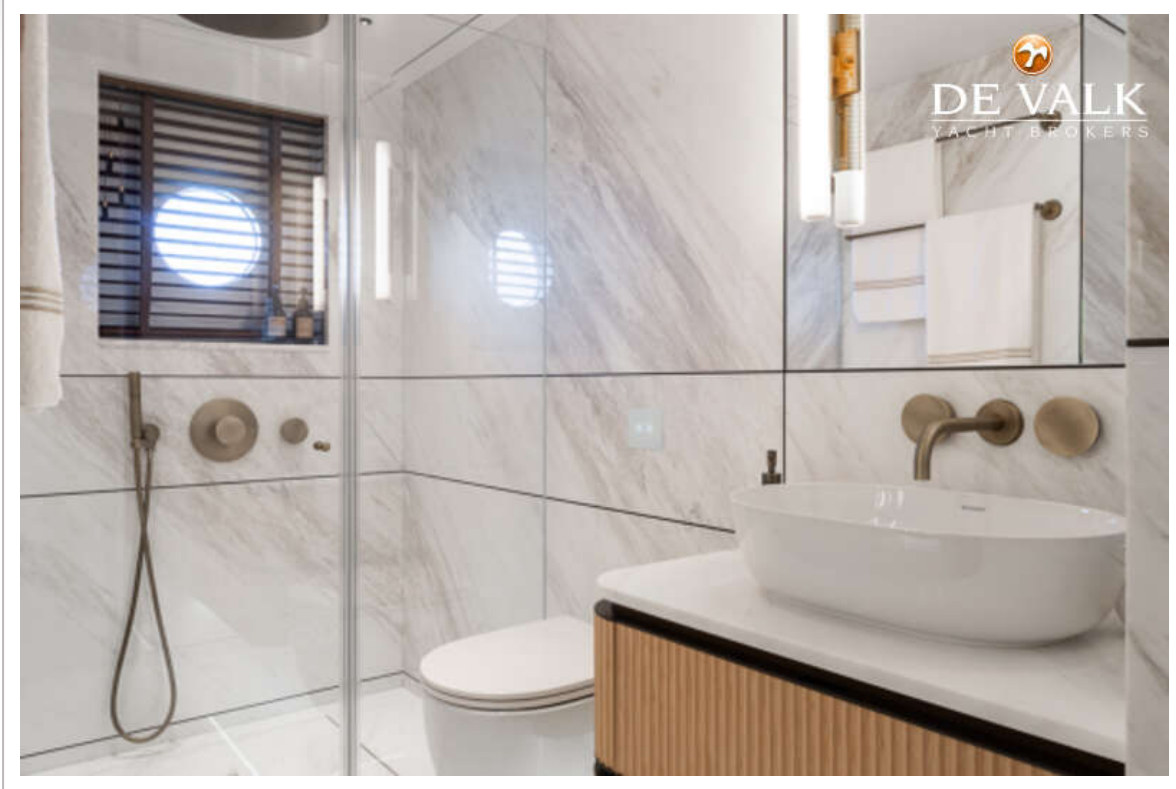
MOONEN 110

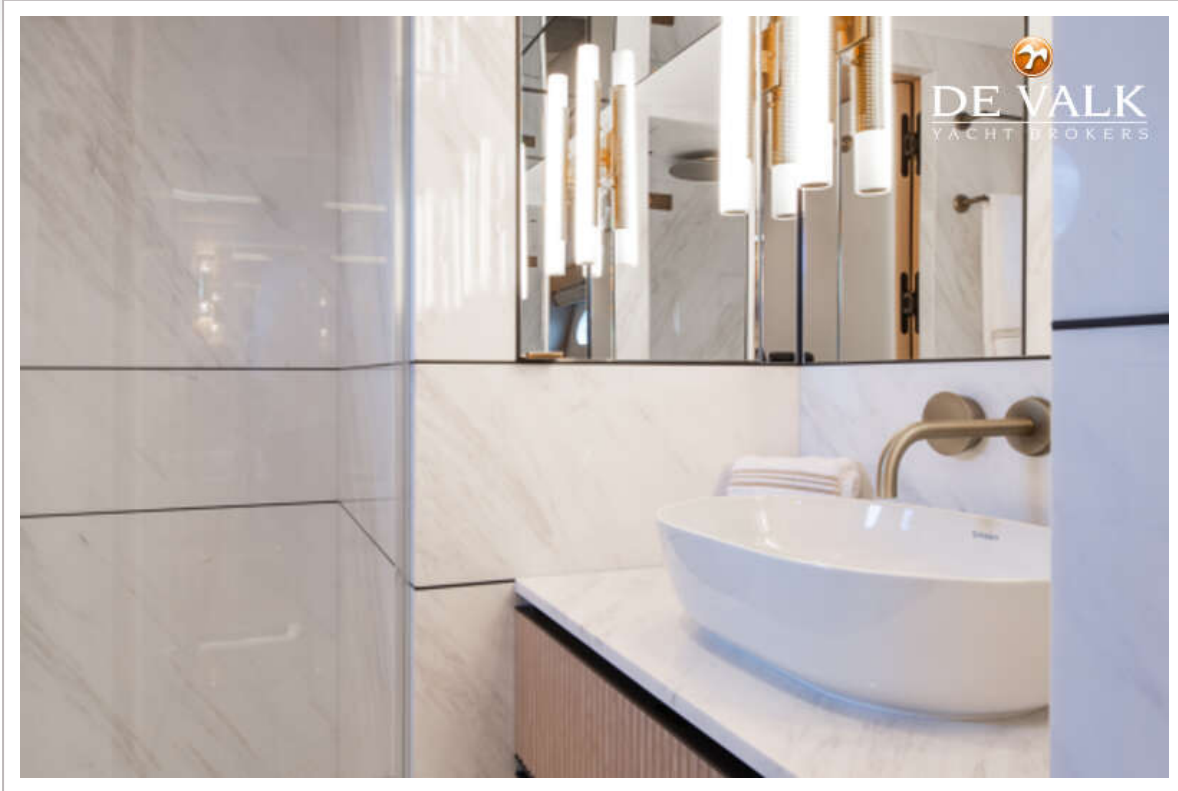




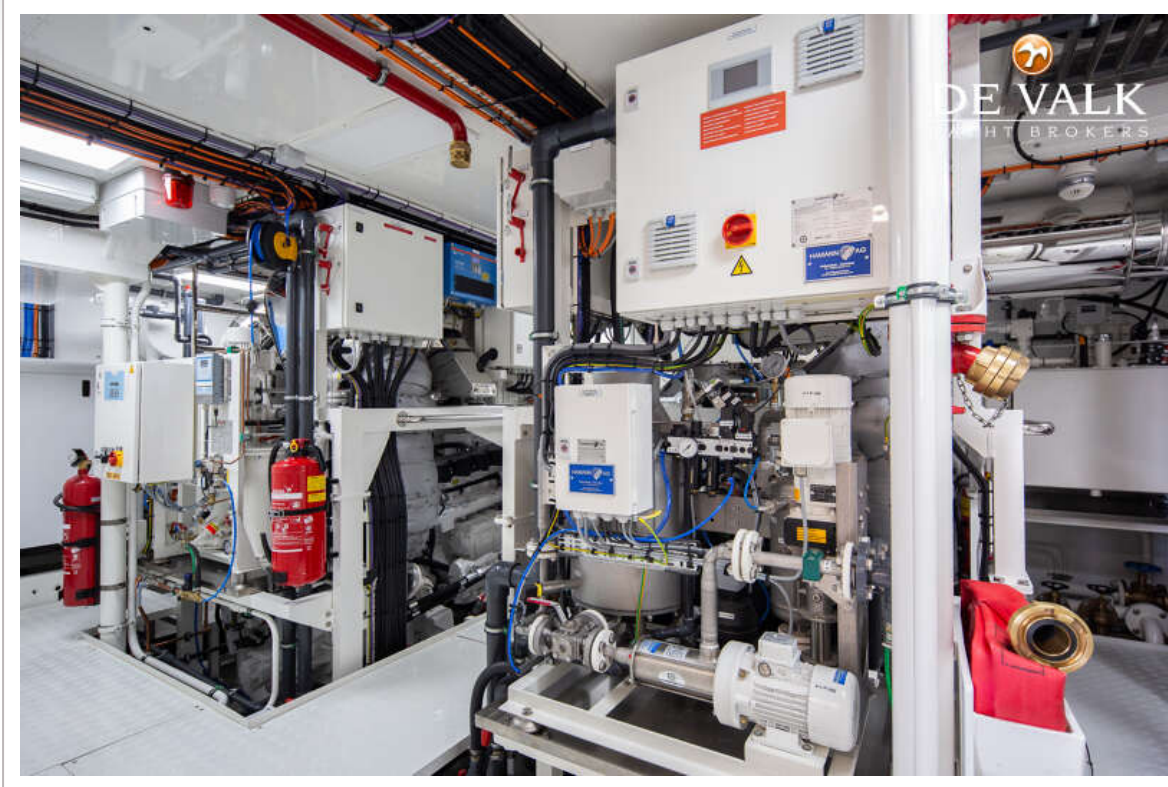
MOONEN 110



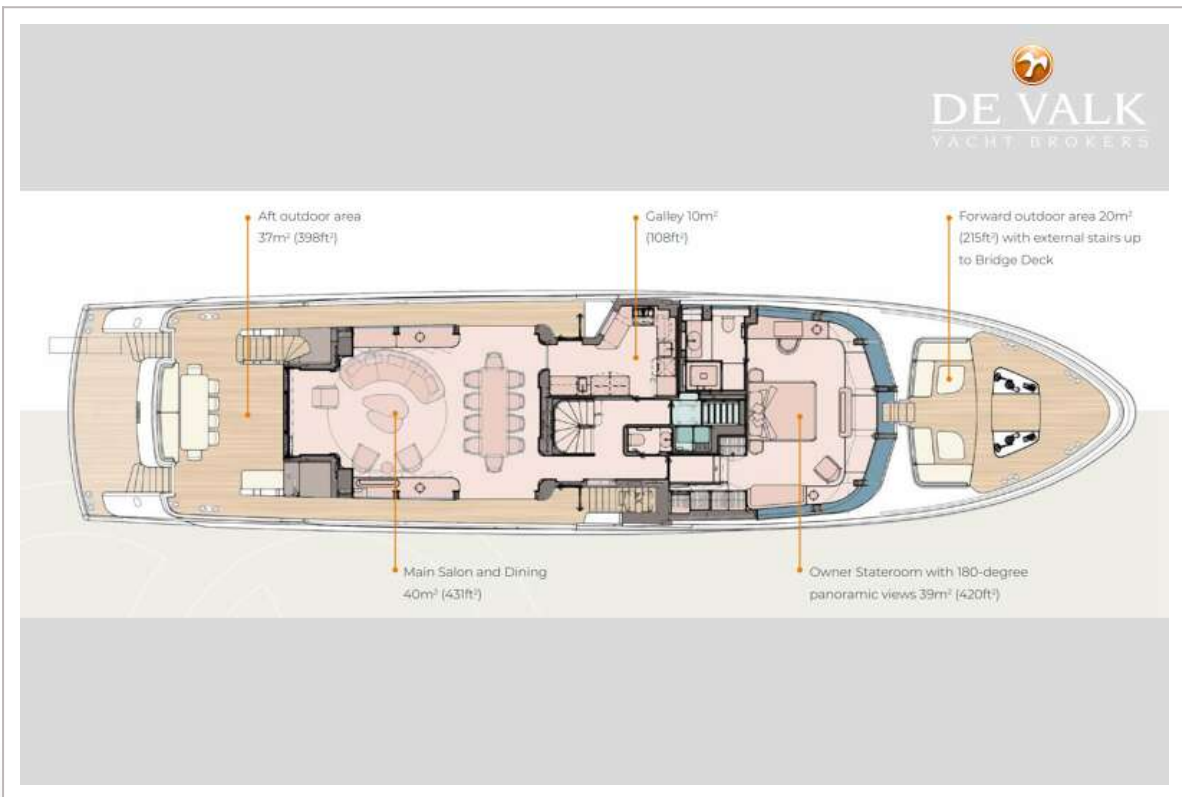
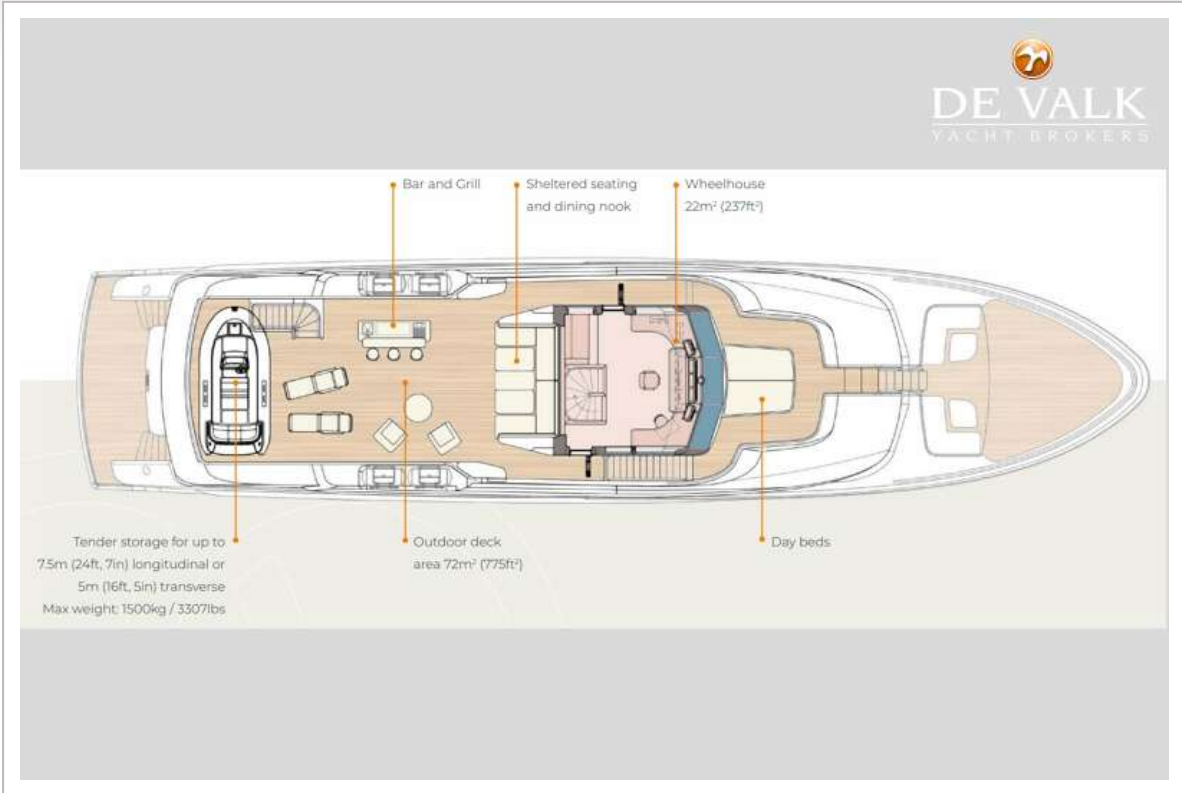




MOONEN 110



MOONEN 110



MOONEN 110

