



COMBI KOTTER 1300

COMBI KOTTER 1300

BROKER'S COMMENTS

Difficult to choose between motor or sail? Not with this amazingly strong built and multipurpose Combi Kotter 1300 yacht. Done with sailing for now? Store mast and rigging and explore inland waters. Overall height can be reduced to ca 3,20m. Many renewals 2018/19, new superstructure paint, new teak. This yacht is perfect for a long stay or permanent living due to her practical lay-out. Teak combined with fresh white interior, airco, double glazing, isolation, new generator and new teak floors. In- and outside steering, a reliable Mercedes diesel, recent electronics and a powerful bow thruster.

Willem Koopmans

SPECIFICATIONS

Dimensions	13.00 x 4.10 x 1.30 (m)	Builder	Jachtwerf De Combinatie
Built	2003	Cabins	2
Material	Steel	Berths	4
Engine(s)	1 x Mercedes MTU OML366LA diesel	Hp/Kw	136.00 (hp), 99.96 (kw)
Asking price	sold (VAT)	Lying	contact sales office

CONTACT

Sales office	De Valk Costa Blanca	Telephone	+34 96 50 21 569
Address	Costa Blanca Region 03730 Javea Alicante ES	E-mail	costablanca@devalk.nl

DISCLAIMER

These particulars are given in good faith as supplied but cannot be guaranteed.



GENERAL

Model	COMBI KOTTER 1300
Type	motor yacht
LOA (m)	13,00
Beam (m)	4,10
Draft (m)	1,30
Air draft (m)	12,50
Air draft min (m)	3,20
Headroom (m)	1,95
Year built	2003
Launched	2003
Builder	Jachtwerf De Combinatie
Country	The Netherlands
Designer	Bezemer
Displacement (t)	17
Ballast (tonnes)	3
CE norm	C
Hull material	steel
Hull colour	blue
Hull shape	hard chine Round
Keel type	long keel
Superstructure material	steel
Rubbing strake	steel
Deck material	steel
Deck finish	non-skid paint
Superstructure deck finish	teak New 2019
Cockpit deck finish	teak Redone 2019
Antifouling (year)	April / May 2024
Dorades	yes
Window frame	aluminium
Window material	double glazing Tinted



Deckhatch	yes
Portholes	aluminium
Insulation	glasswool
Mast can be lowered	yes
Fuel tank (litre)	800
Level indicator (fuel tank)	yes
Freshwater tank (litre)	750
Level indicator (freshwater)	yes
Greywater tank (litre)	400
Wheel steering	hydraulic
Inside helm position	yes
Outside helm position	hydraulic
Emergency tiller	yes
More info on hull	Shot blasted and primed March 2024
More info on paintwork	new 2018 Superstructure, hull above water line needs best repaint
Extra info	To be used as motor sailer or motor boat.

ACCOMMODATION

Cabins	2
Berths	4
Interior	teak
Floor	teak and holly
Open cockpit	yes
Deck saloon	New wooden floor 2019
Saloon	yes
Headroom saloon (m)	1,95
Sliding roof	manual
Heating	Not connected, but partly prepared
Air-conditioning	reverse cycle airco Cruisair
Navigation center	yes



Dinette	yes
Opening door to cockpit	yes
Galley	Lots of storage and working space
Countertop	Duropol
Sink	stainless steel
Cooker	electric Force 10 Marine gimballled
Oven	the on water "Chef's choice" to use for a perfect meal Force 10 Marine gimballled
Microwave	Russel Hobbs
Fridge	Isotherm
Hot water system	220V + engine Boiler
Water pressure system	electrical
Dishwasher	yes
Owners cabin	double bed
Bed length (m)	2
Wardrobe	hanging and shelves
Bathroom	separate
Toilet	separate
Toilet system	electric New
Wash basin	in the bathroom
Shower	separate
Guest cabin 1	bunk bed
Bed length (m)	1,95
Wardrobe	hanging and shelves
Bathroom	separate
Toilet	separate
Toilet system	electric
Wash basin	in the bathroom
Shower	separate
Washing machine	Single Nova 1100 HK

MACHINERY



No of engines	1
Make	Mercedes
Type	MTU OML366LA
HP	136
kW	99.96
Fuel	diesel
Year installed	2003
Maximum speed (kn)	9
Cruising speed (kn)	7
Consumption (l/hr)	5
Engine hours	3330
Engine cooling system	freshwater heat exchanger
Drive	shaft
Shaft seal	2018
Engine controls	electrical & bowden cable
Gearbox	hydraulic Hurth
Bowthruster	Side-Power
Thrust bearing	Python Drive
Propeller type	fixed
Propeller blades	4
Propeller shaft material	stainless steel
Manual bilge pump	yes
Electric bilge pump	yes
Electrical installation	12/24/220 Volt
Generator	Perkins 6,5 kW, new 2021
Batteries	All Lithium, new 2022
Battery monitor	Trace Engineering
Battery charger	yes
Battery charger/inverter	Victron Energy Quattro 24/3000/70
Shorepower	with cable



NAVIGATION

Compass	Raymarine ST 60
Depth sounder	Raymarine
Log	Raymarine
Windset	Raymarine
VHF	Icom IC-M503
Autopilot	Raymarine ST6001+
Radar	Raymarine
Plotter	Raymarine RL80C
Plotter/GPS	Simrad 9"
Navtex	NWF MRD 80
Radio receiver	Raymarine
Transmitter	Raymarine
Navigation lights	yes

EQUIPMENT

Cockpit cushions	yes
Cockpit table	yes
Boarding ladder	stainless steel
Bow ladder	yes
Deck shower	yes
Anchor	Pool
Anchor chain	50 m
Windlass	electrical Lofrans 1000 Watt 24 Volt
Deck wash	yes
Sea railing	yes
Grab rail (superstructure)	stainless steel
Railing side opening gates	yes
Lifejackets	yes
Lifebuoy	yes
Wiper	yes



Horn	yes
Fenders	yes
Mooring lines	yes
TV	Philips
TV receiver	Glomax receiver
Radio-cd player	Blaupunkt
Speakers in salon	Blaupunkt
Clock - barometer	yes

RIGGING

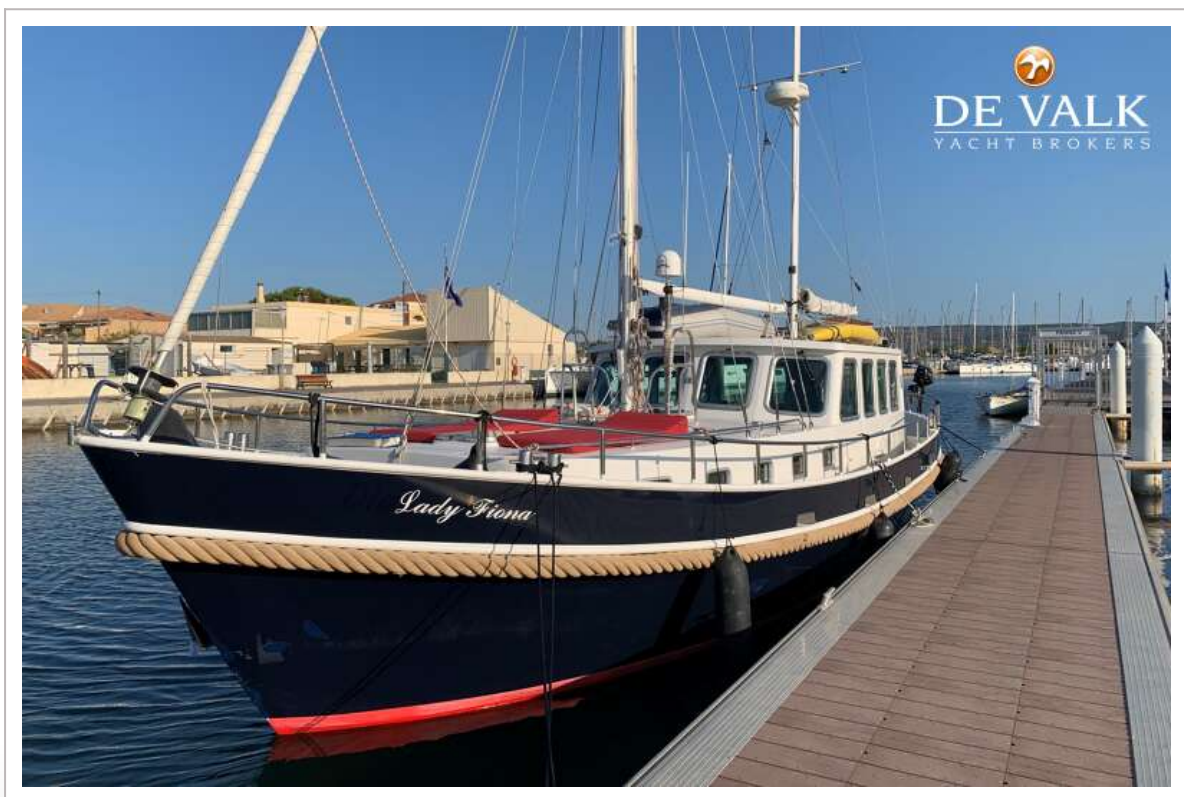
Rigging	yes
Standing rigging	wire
Material mast	aluminium coated White
Mainsail	21 m2
Mainsail cover	yes
Mizzen	yes
Mizzen sailcover	yes
Jib	yes
Genoa furler	yes
Backstay adjuster	yes
Boomvang	yes
Primary sheet winch	yes
Secondary sheet winch	yes
Extra info	Total sails 65m2
Extra info	Economical long distance traveller



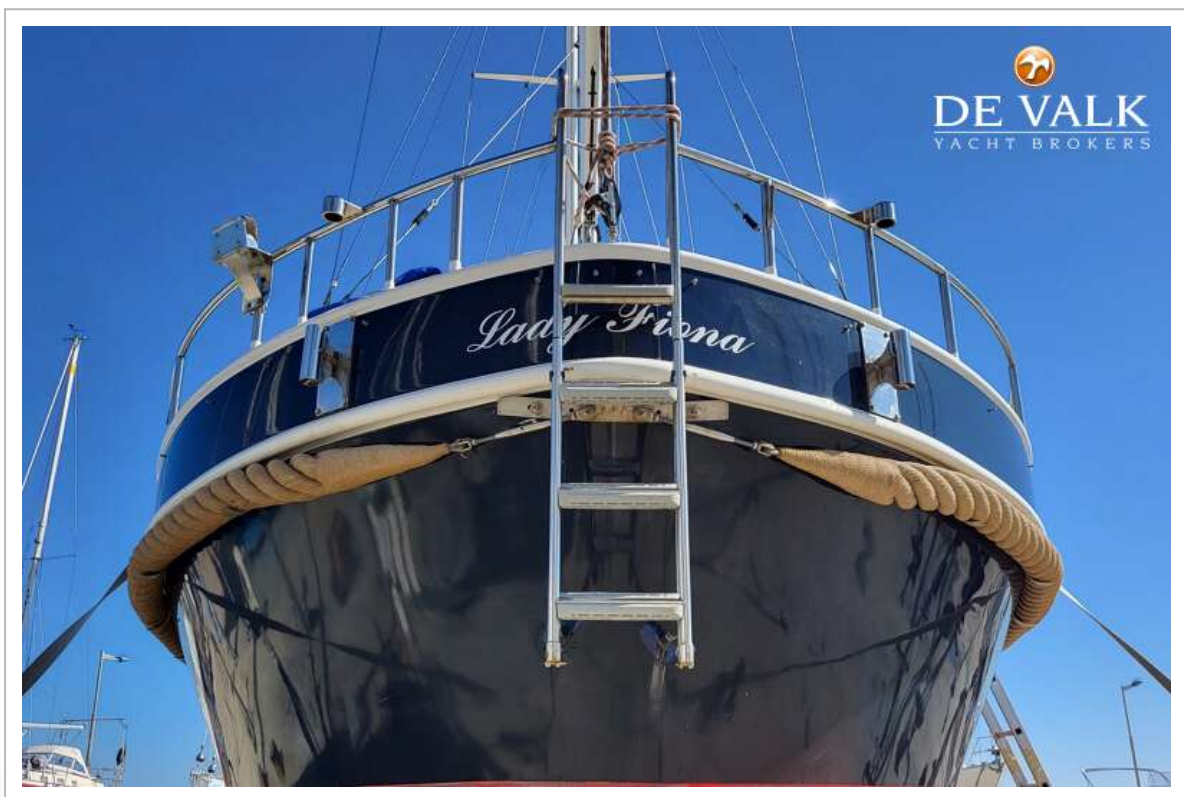
COMBI KOTTER 1300



COMBI KOTTER 1300



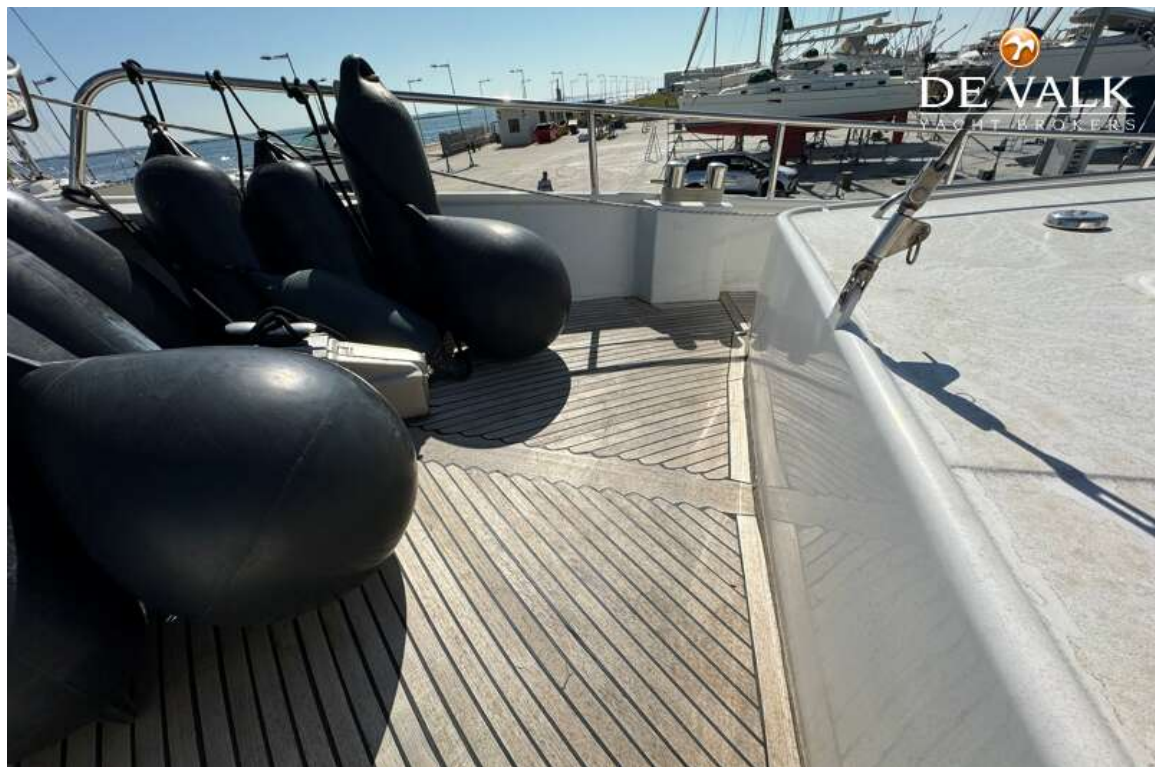
COMBI KOTTER 1300



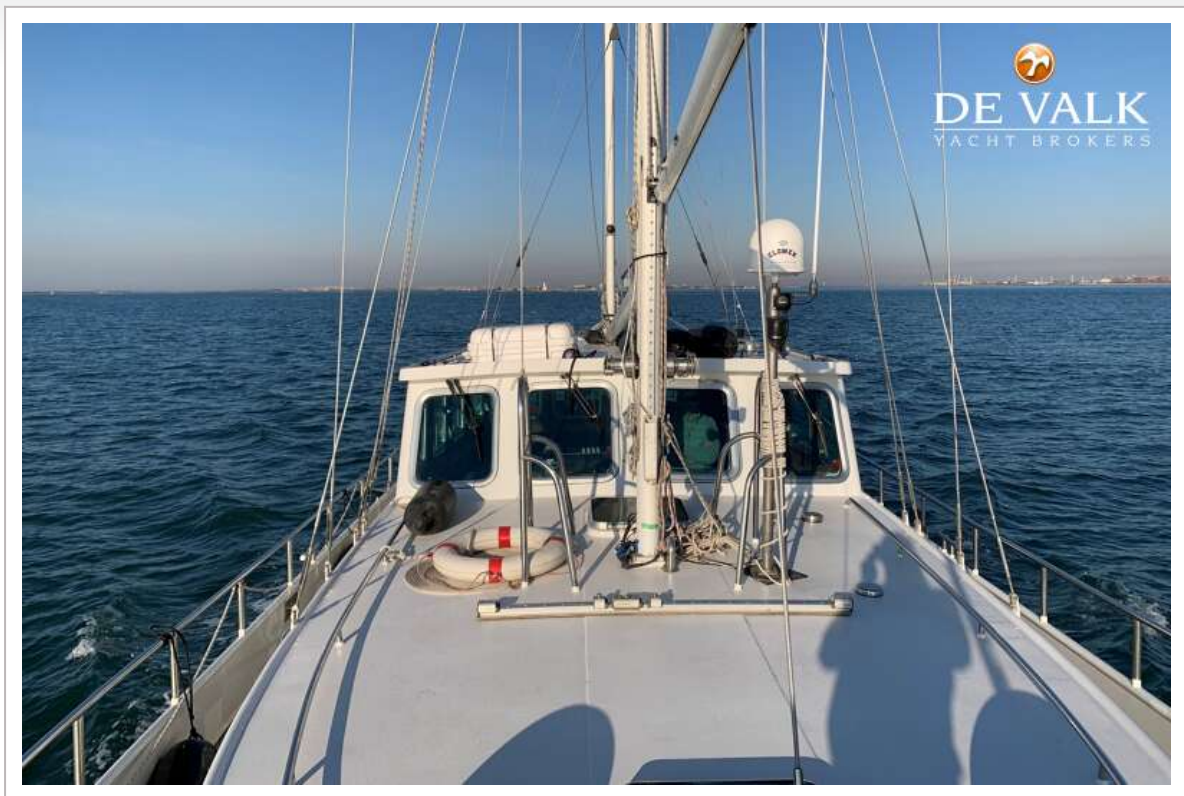
COMBI KOTTER 1300



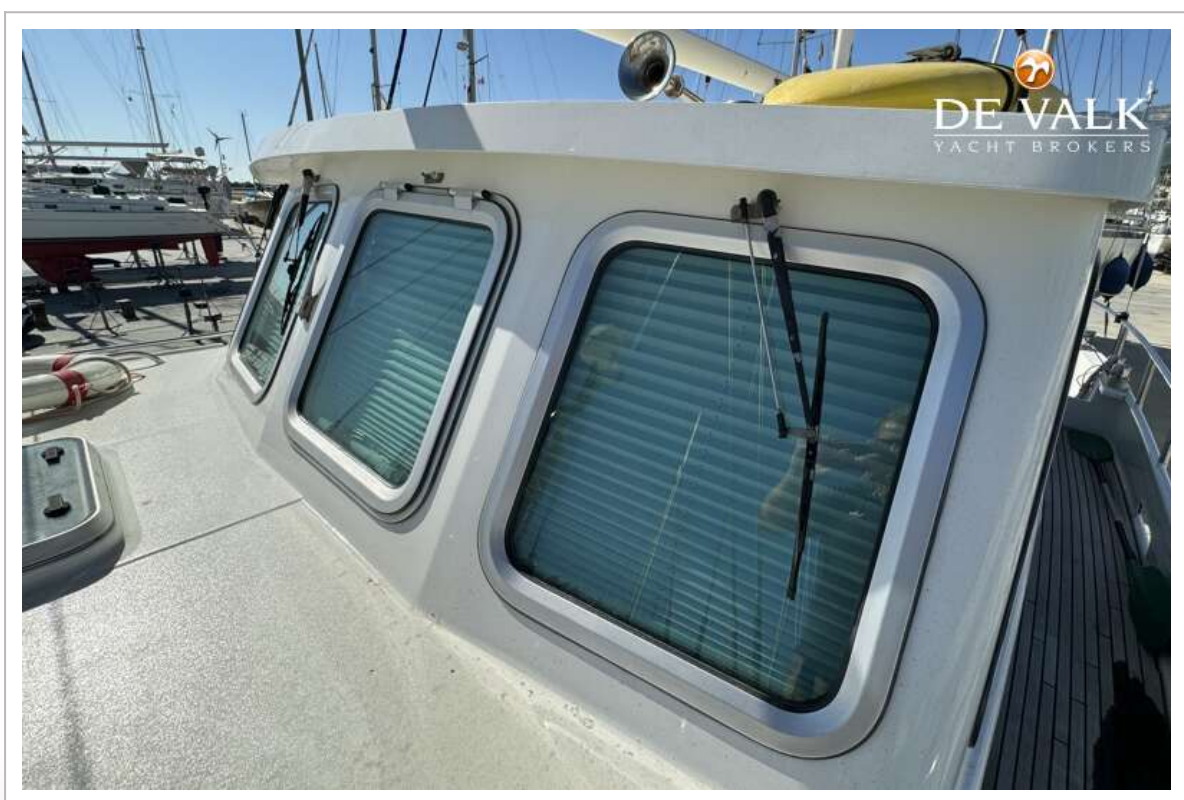
COMBI KOTTER 1300



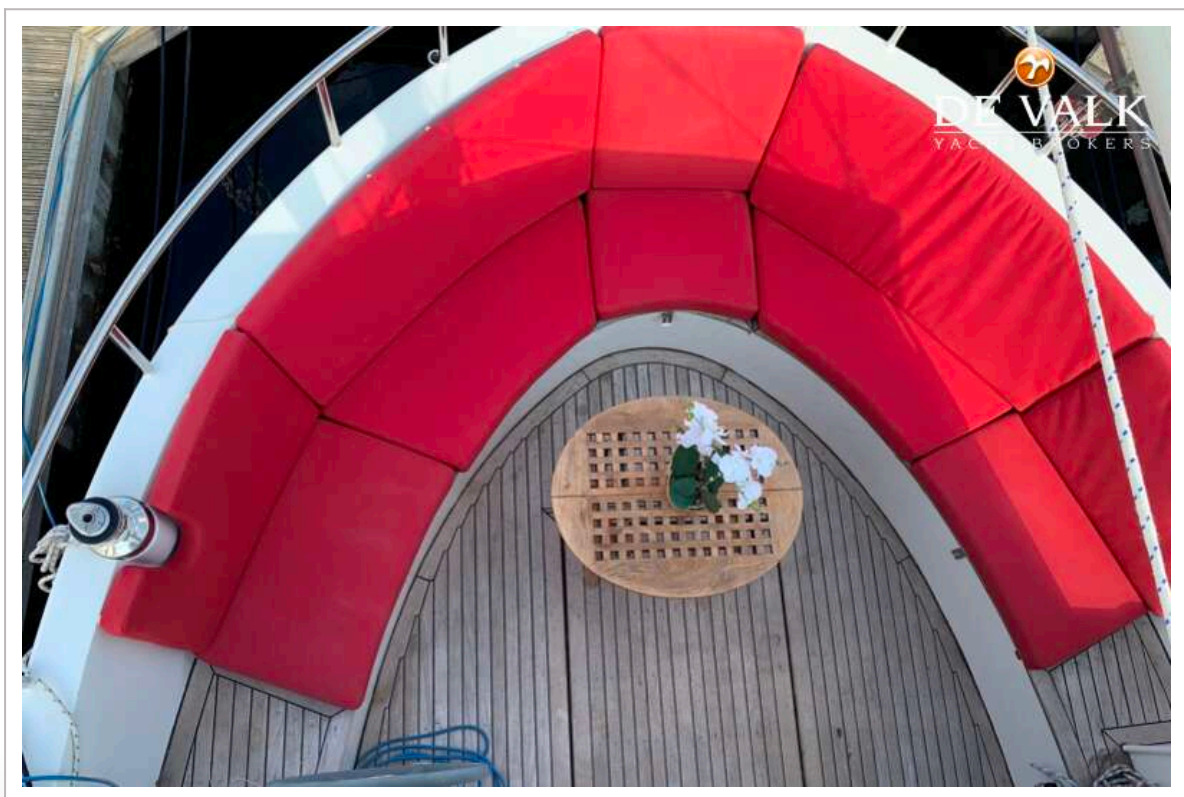
COMBI KOTTER 1300



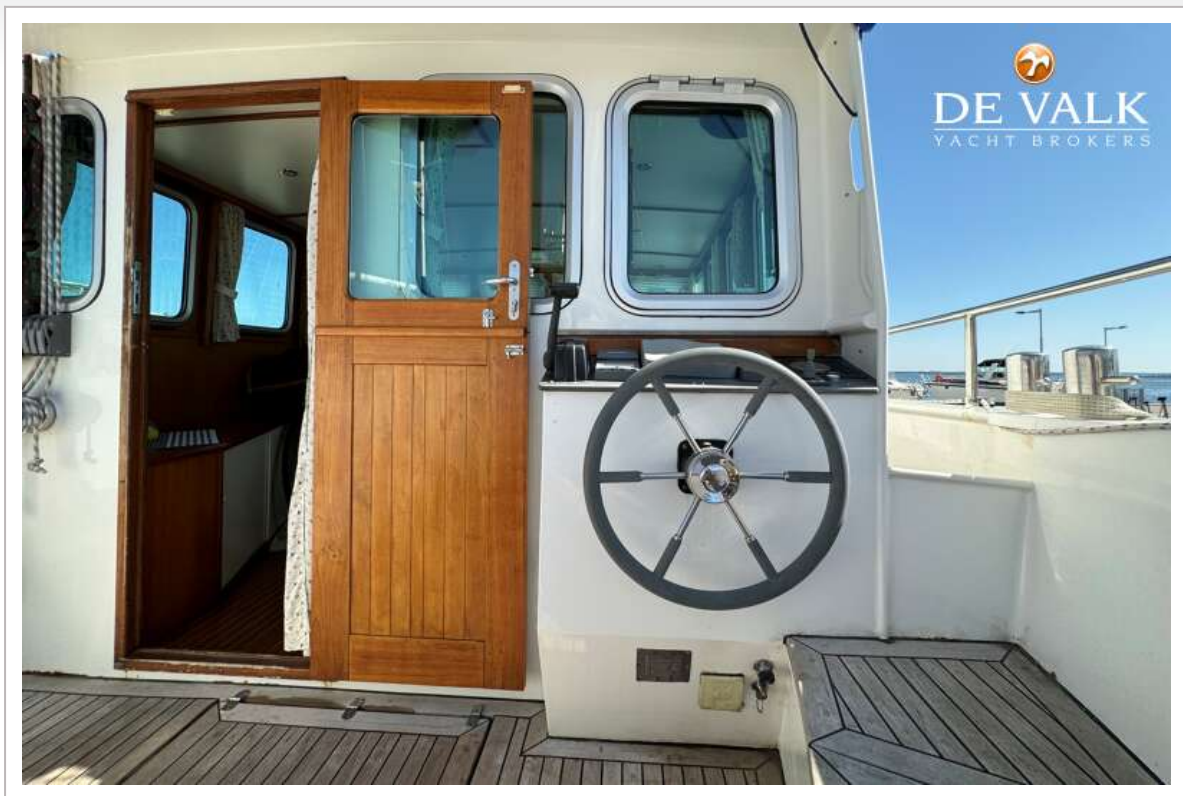
COMBI KOTTER 1300



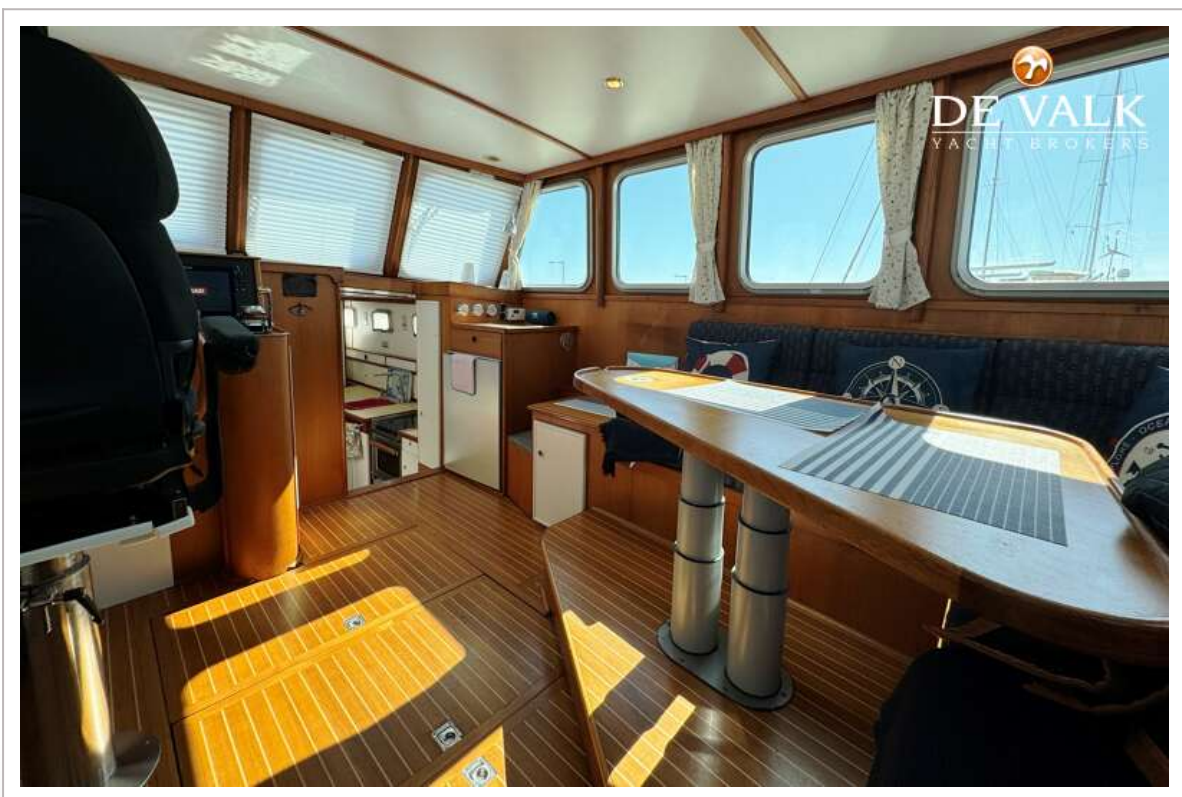
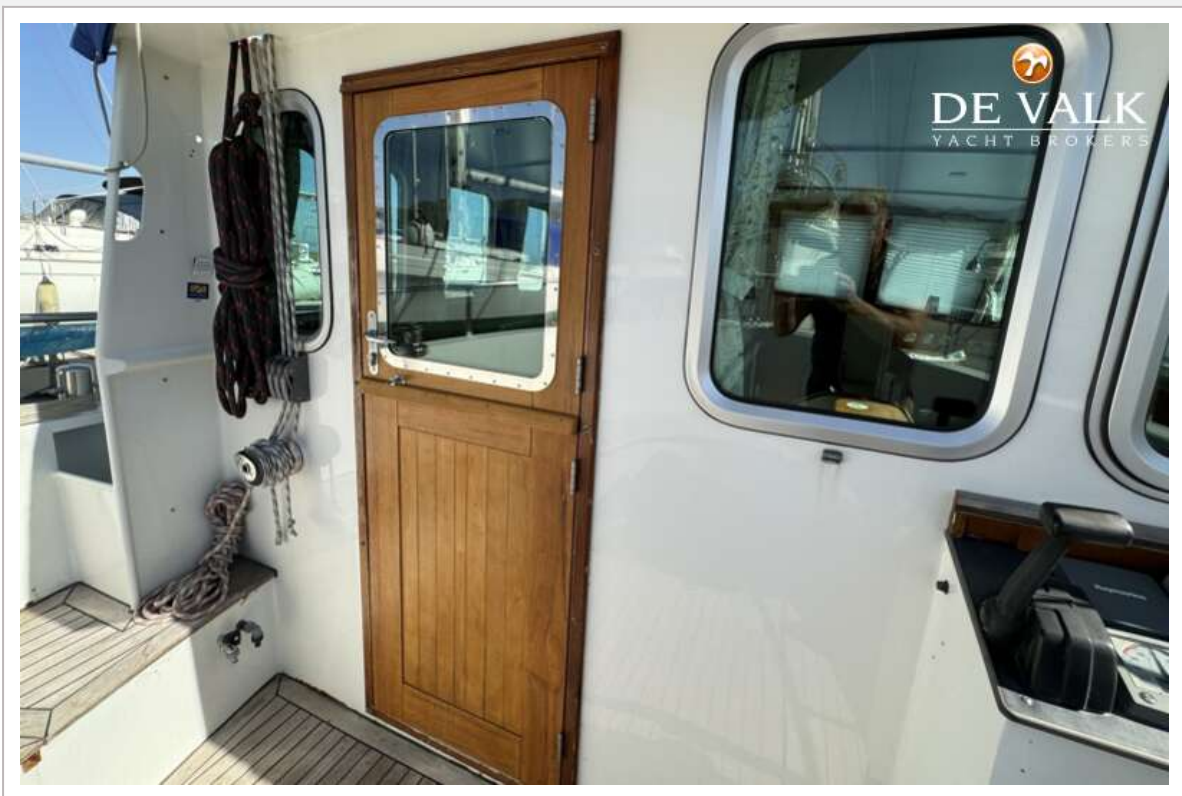
COMBI KOTTER 1300



COMBI KOTTER 1300



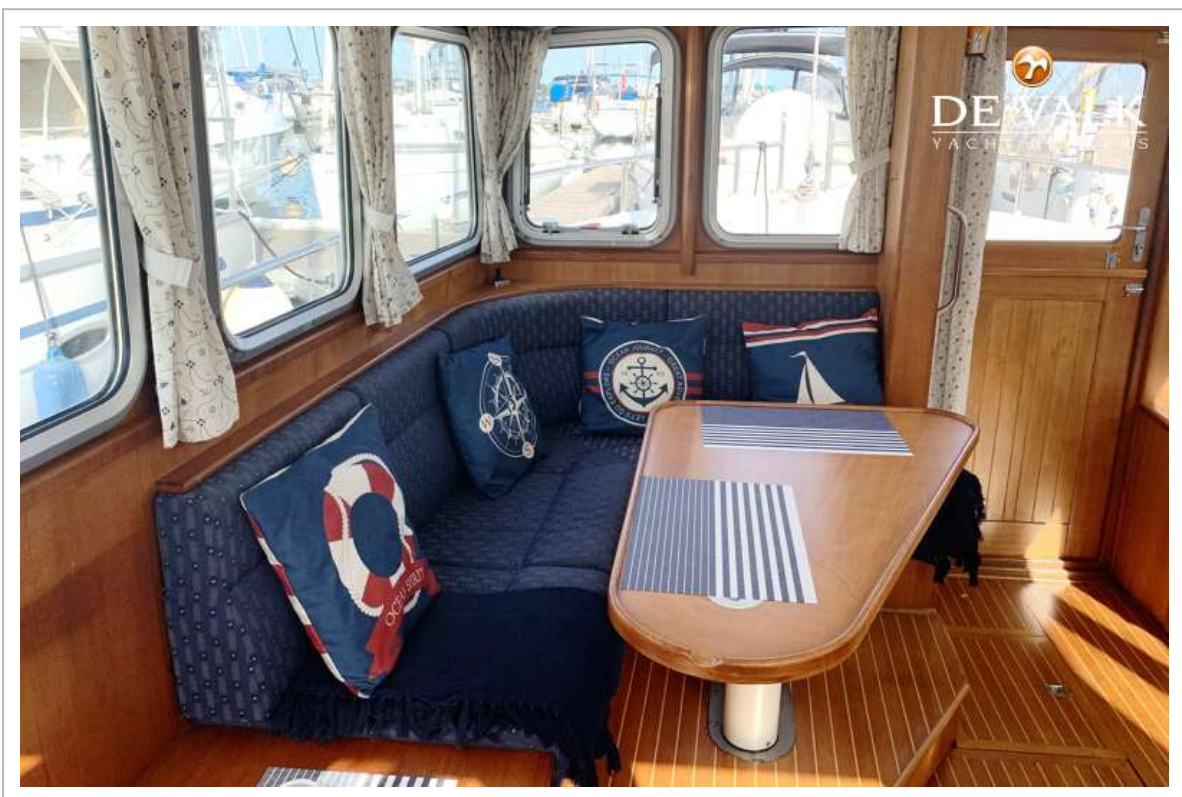
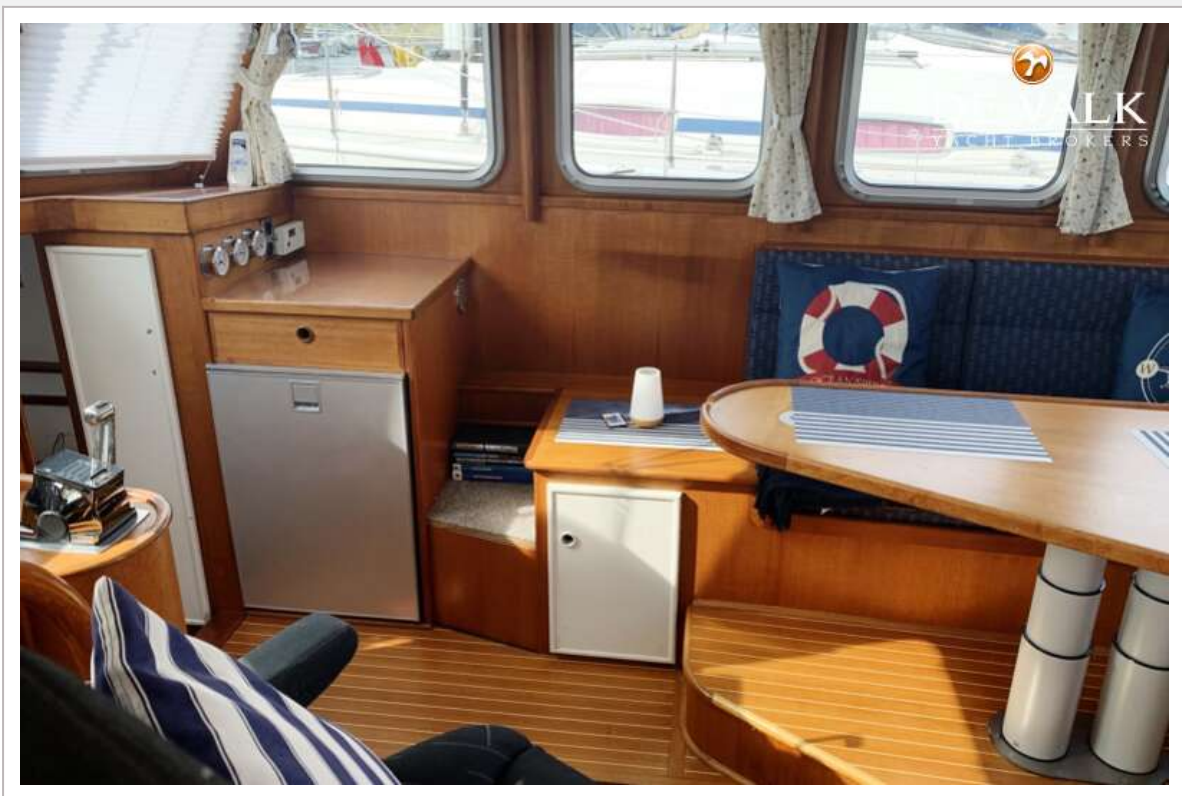
COMBI KOTTER 1300



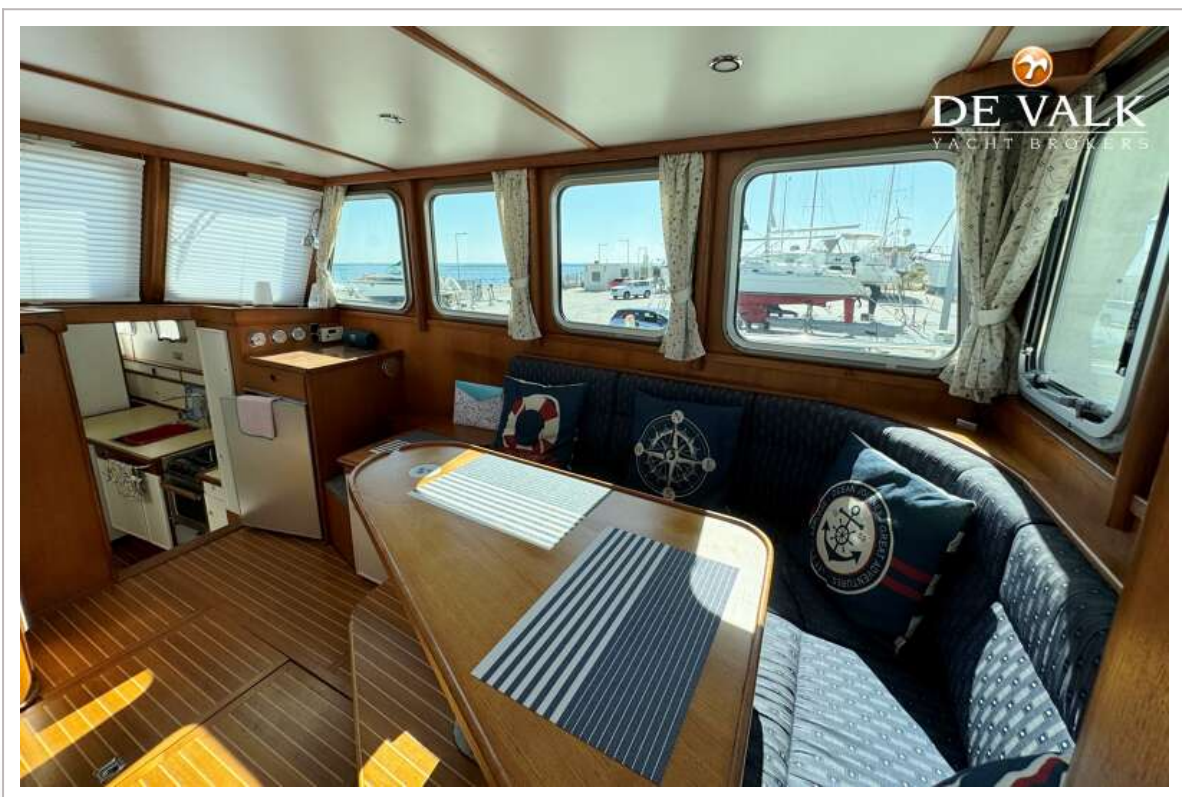
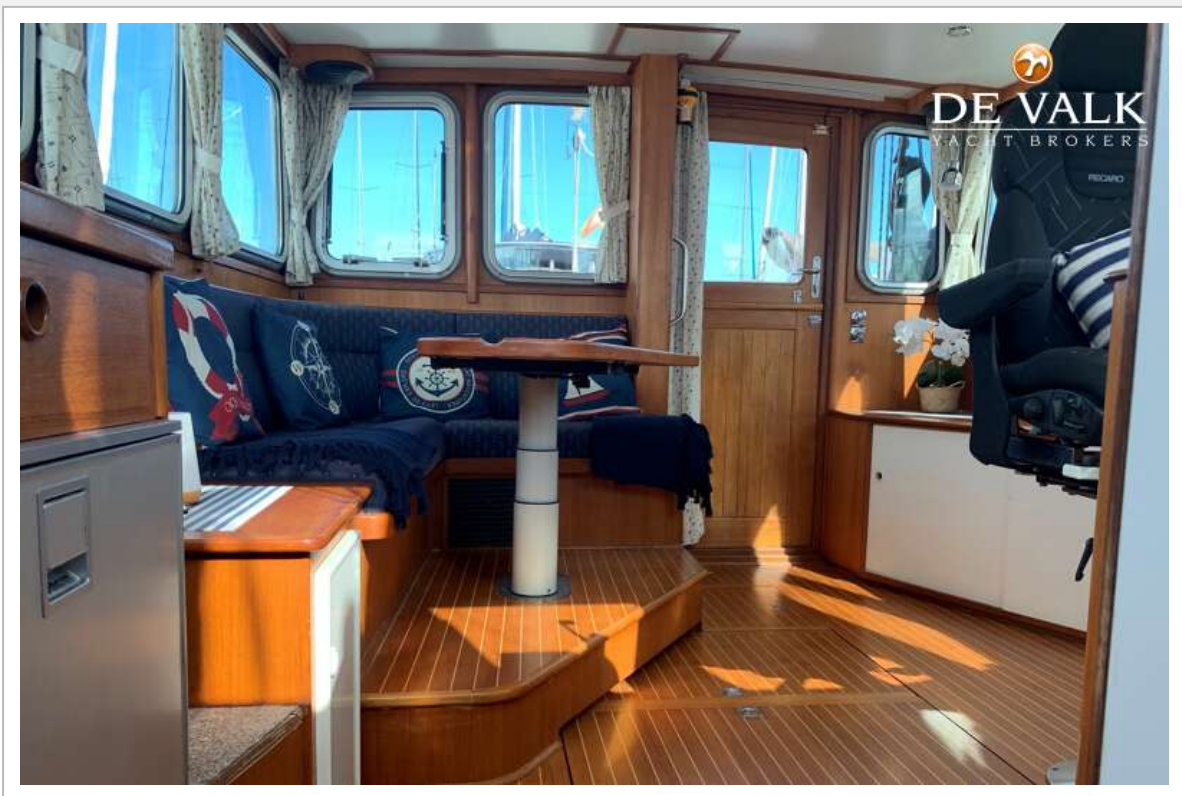
COMBI KOTTER 1300



COMBI KOTTER 1300



COMBI KOTTER 1300



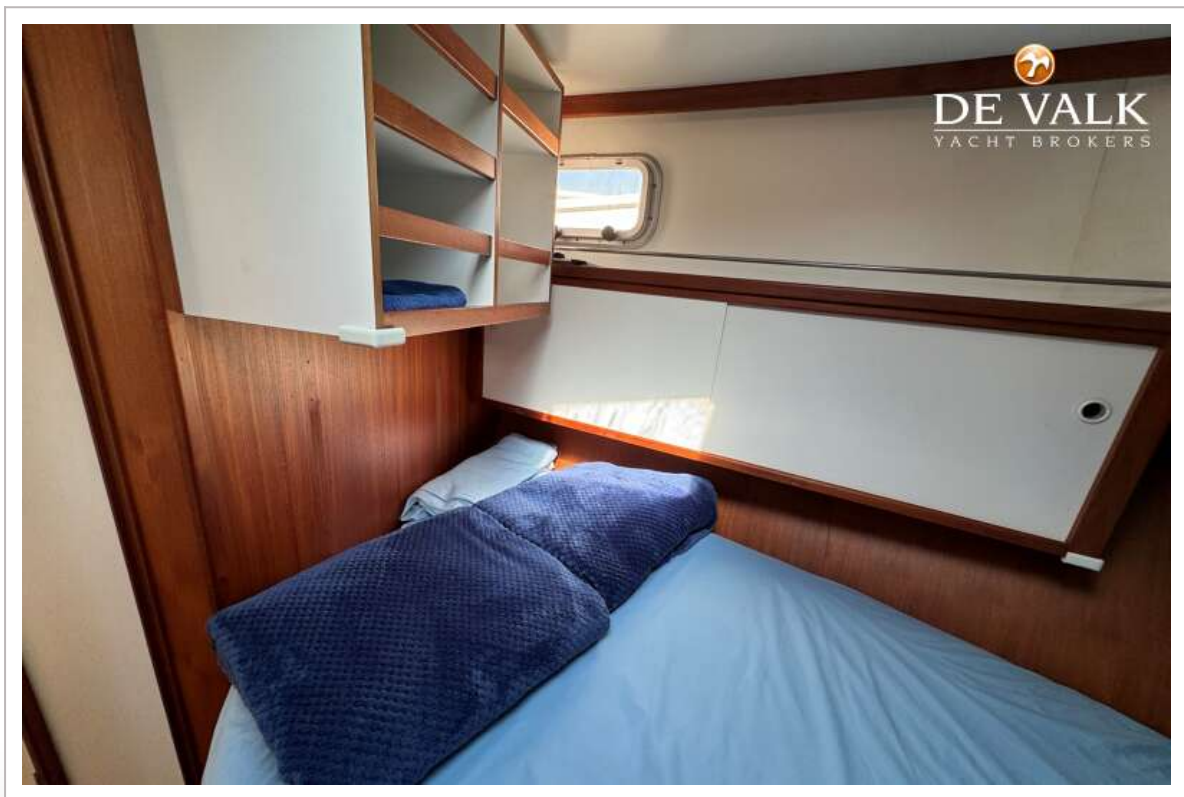
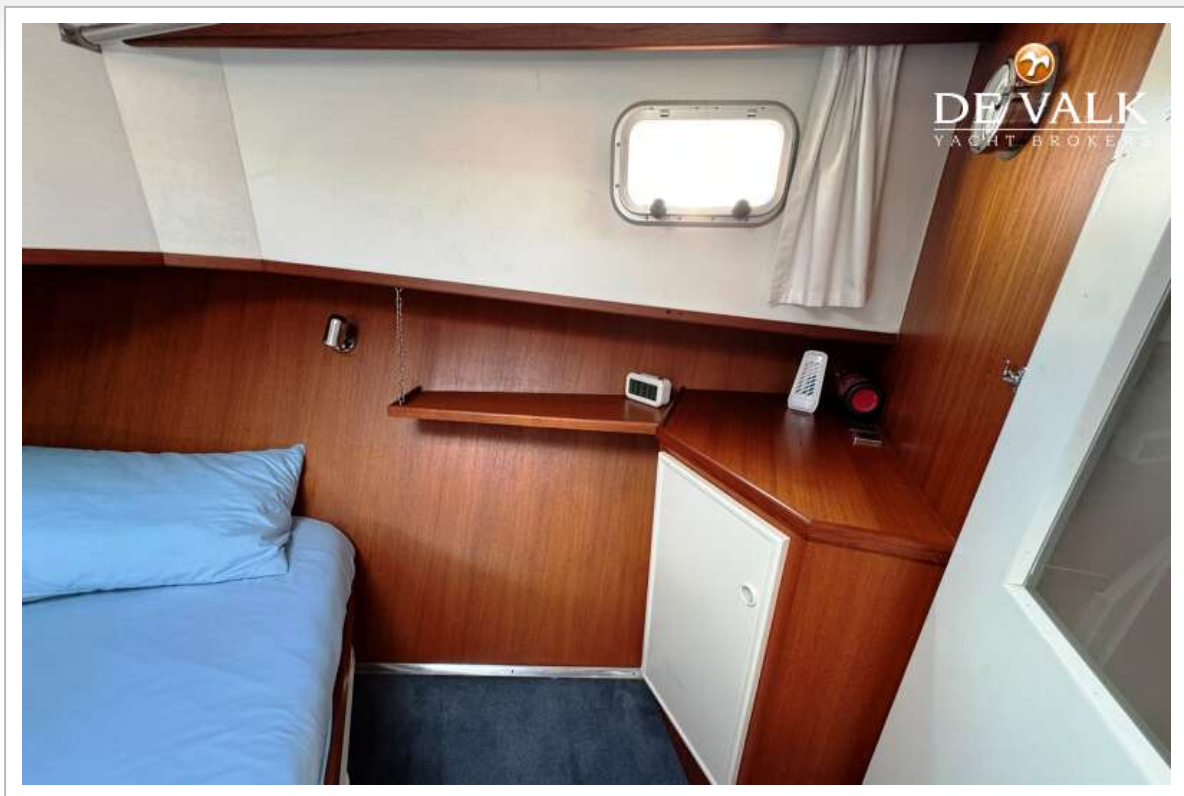
COMBI KOTTER 1300



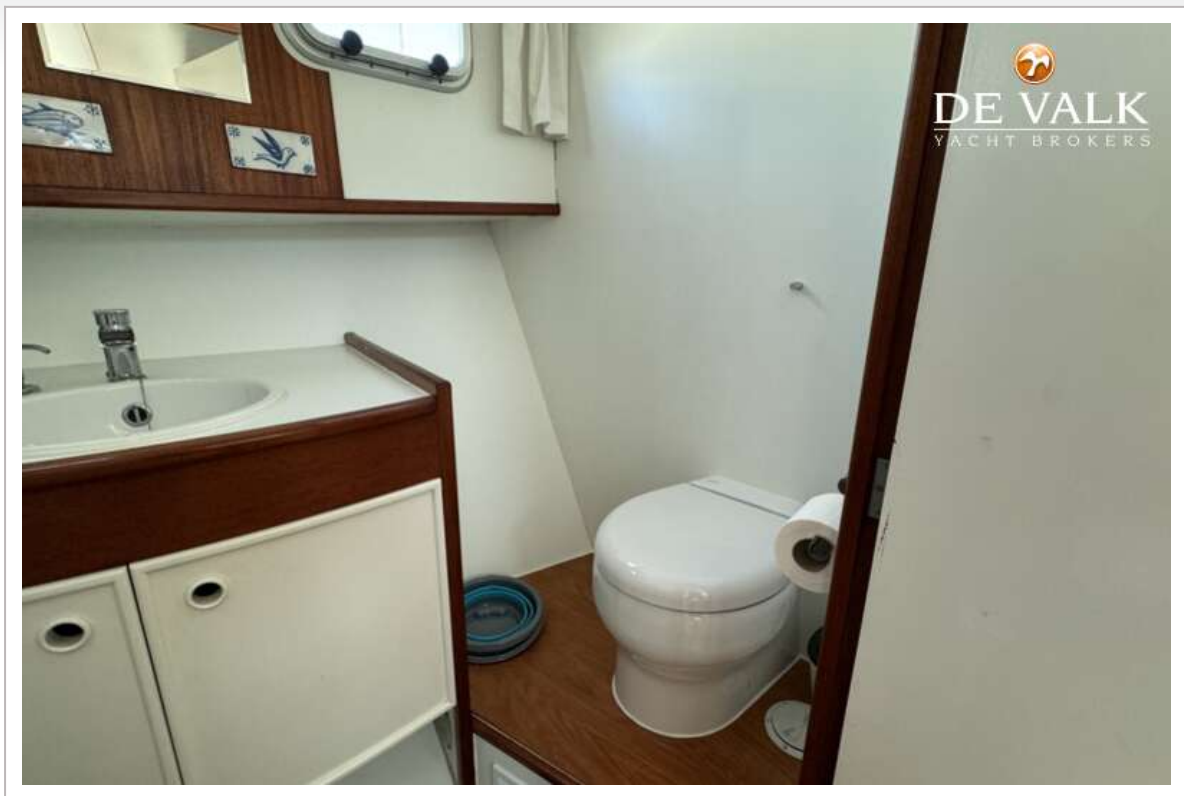
COMBI KOTTER 1300



COMBI KOTTER 1300



COMBI KOTTER 1300



COMBI KOTTER 1300

