



ENDURANCE 38



ENDURANCE 38

BROKER'S COMMENTS

The Endurance 38 is an elegant design of Peter Ibold with classic lines and more modern underwater body with fin-keel and skeg hung rudder. She is safe, reliable, stable and secure also in more adverse condition. This example is built in woodcore and has nice woodwork inside with large windows in the salon providing ample light and good view of the surroundings. Good stowage space and deep cockpit for safety when underway. The Endurance 38 is an ideal "go-anywhere-any-time" offshore yacht if you want to explore distant shores.

Nick Lanting

SPECIFICATIONS

Dimensions	11.80 x 3.90 x 1.89 (m)	Builder	Klaas Bood
Built	1997	Cabins	1
Material	GRP	Berths	4
Engine(s)	1 x Vetus P4.19 A602A diesel	Hp/Kw	56.00 (hp), 41.22 (kw)
Asking price	€ 82.500 (VAT Paid)	Lying	elsewhere / Not at sales office

CONTACT

Sales office	De Valk Sint Annaland B.V.	Telephone	+31 (0)166 601 000
Address	Koelhuisweg 4 4697 RM Sint Annaland NL	E-mail	sintannaland@devalk.nl

DISCLAIMER

These particulars are given in good faith as supplied but cannot be guaranteed.



GENERAL

Model	ENDURANCE 38
Type	sailing yacht
LOA (m)	11,80
Beam (m)	3,90
Draft (m)	1,89
Air draft (m)	18,00
Headroom (m)	1,95
Year built	1997
Builder	Klaas Bood
Country	The Netherlands
Designer	Peter Ibold
Displacement (t)	8
CE norm	NA
Hull material	GRP
Hull colour	blue
Hull shape	round-bilged
Keel type	fin keel (designed by Koopmans)
Superstructure material	wood epoxy With aramid
Rubbing strake	wood (teak) with a stainless steel strip
Deck material	wood epoxy Epoxy / mahogany sandwich
Deck finish	non-skid paint (white)
Superstructure deck finish	paint (white)
Cockpit deck finish	teak
Antifouling (year)	Self polishing (spring 2025)
Dorades	2 x Stainless steel (on bow with stainless steel protection)
Window frame	aluminium (Center window on front side of deckhouse is opening)
Window material	tempered glass Gebo (Securit)
Deckhatch	4 x Gebo
Fuel tank (litre)	360
Fuel daytank (litre)	70



Level indicator (daytank)	yes
Freshwater tank (litre)	260
Wheel steering	Stainless steel Whitlock steering wheel (needs new leather)
Outside helm position	rack & pinion Whitlock pedestal
Emergency tiller	yes
More info on hull	The boat is constructed with an epoxy/Kevlar/woodcore sandwich
More info on paintwork	Hull cleaned, polished and waxed 12/2023.
Extra info	Rudder with a skeg

ACCOMMODATION

Cabins	1
Berths	4
Interior	teak
Floor	teak and holly
Pilot house/deck saloon	yes
Saloon	With grey upholstery (New in November 2023)
Headroom saloon (m)	1,92
Heating	stove diesel Dickinson Alaska
Chart table	On port side with a foldable fixed chair
Dinette	yes
Convertible berth	SB: Single berth : 2,00 x 0,70 m with Blue Performance Lee-Cloth
Galley	On starboard side - Headroom : 1,97 m
Countertop	Duropol White
Sink	stainless steel 2 x
Cooker	calor gas 3 burner
Oven	yes
Gas alarm	yes
Fridge	Top loader with an Isotherm compressor
Water pressure system	manual Foot switch
Owners cabin	v-bed In front cabin - Headroom : 1,80 m



Bed length (m)	2,10 x 1,70
Wardrobe	hanging/drawers/shelves
Bathroom	shared Headroom : 1,80 - 1,87 m
Toilet	shared
Toilet system	Compost dry toilet
Wash basin	in the bathroom
Guest cabin 1	single bed
Bed length (m)	2,10 x 0,70

MACHINERY

No of engines	1
Make	Vetus
Type	P4.19 A602A
HP	56
kW	41.22
Fuel	diesel
Year installed	1997
Maximum speed (kn)	7,5
Cruising speed (kn)	6,5
Consumption (l/hr)	3
Engine hours	1536
Engine cooling system	freshwater heat exchanger
Drive	shaft
Engine controls	bowden cable
Gearbox	hydraulic Technodrive TMG/60 (Serial Nr 9607112)
Bowthruster	electric Side-Power SP95Ti with a wire less remote control
Exhaust	watercooled
Propeller type	feathering
Propeller blades	3
Propeller shaft material	stainless steel
Shaft lubrication	water



Manual bilge pump	yes
Electrical installation	12 & 220 Volt
Start battery	1 x 100 Ah
Service battery	3 x 100 Ah (new in 2022)
Bowthruster battery	1 x 50 Ah Optima Red Top (2020)
Battery charger	2 x Mastervolt (1 x for bow truster battery)
Diode battery combiners	yes
Shorepower	with cable

NAVIGATION

Compass	Whitlock compass on the pedestal
Depth sounder/log	yes
Windset	B&G Network
Repeater	B&G
VHF	Lowrance (2019)
Autopilot	B&G (2019)
Plotter/GPS	1 x Simrad (in cockpit) & 1 x Lowrance Elite-7M (at chart table)
Navtex	Furuno Navtex NX-300
Navigation lights	yes

EQUIPMENT

Storm blinds	Removable & thick perspex for middle windows (3 are missing)
Sprayhood	Sand colour (2019)
Cockpit table	Teak, hanging on frontside of pedestal,
Boarding ladder	stainless steel
Anchor	CQR Plough
Anchor chain	Galvanised chain and rope
Windlass	electrical Lofrans Tigres with a wired remote on the bow
Capstan	yes
Sea railing	wire (Double)
Grab rail (superstructure)	teak



Railing side opening gates	On both sides
Pushpit	Stainless steel
Pulpit	Stainless steel
Life raft	Plastimo - Mounted in a bracket on the pushpit
Life raft (pers)	container 4
Last life raft survey	01/07/2019
Radar reflector	yes
Fenders	yes
Mooring lines	yes
Clock - barometer	yes
Fire extinguisher	yes

RIGGING

Rigging	cutter
Standing rigging	wire (new in 2021)
Brand mast	Kemp
Material mast	aluminium
Spreaders	2 x set of spreaders
Mainsail	Hagoort 40 m2 (2013)
Mainsail cover	Sand colour Lazy-Bag (new 2020) & old blue cover (needs repair)
Jib I	Furling Cutter Jib 13 m2 (2022)
Genoa	Hagoort furling genoa 39 m2 with grey UV protection strip (2015)
Genoa furler	Bamar
Genoa cover	Old Dark blue Cutter Jib cover (needs to be repaired)
Cutter furler	Bamar
Gennaker	Gennaker 100 m2 with a snuffer
Stormjib	(Original but looks like new)
Reefing System	slabreefing
Boomvang	tackle
Secondary sheet winch	2 x Stainless steel Anderson 40 ST 2-speed
Genoa sheetwinches	2 x Stainless steel Anderson 46 ST 2-speed



Halyard winches

2 x Stainless steel Meisner 28 2-speed

Reefing winch

2 x Stainless steel Meisner 1-speed (1 x 8 & 1 x 10)

Extra info

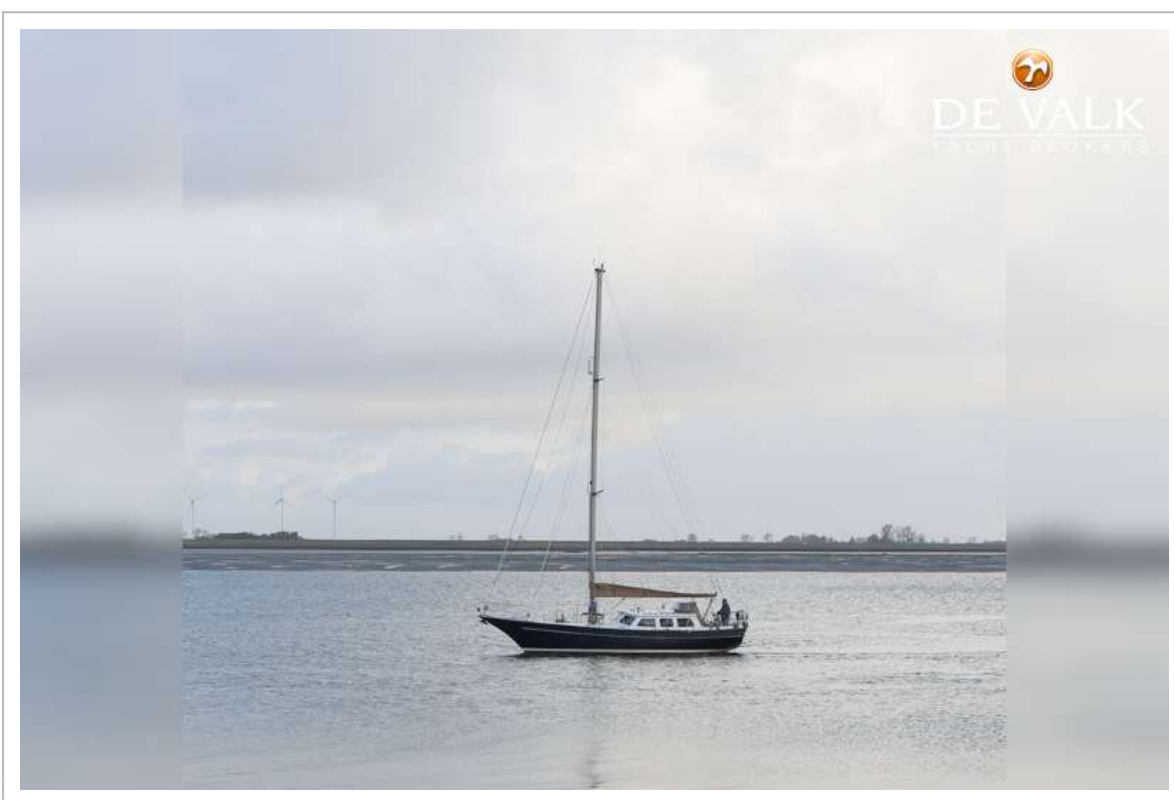
Stainless steel granny bars around the mast

Extra info

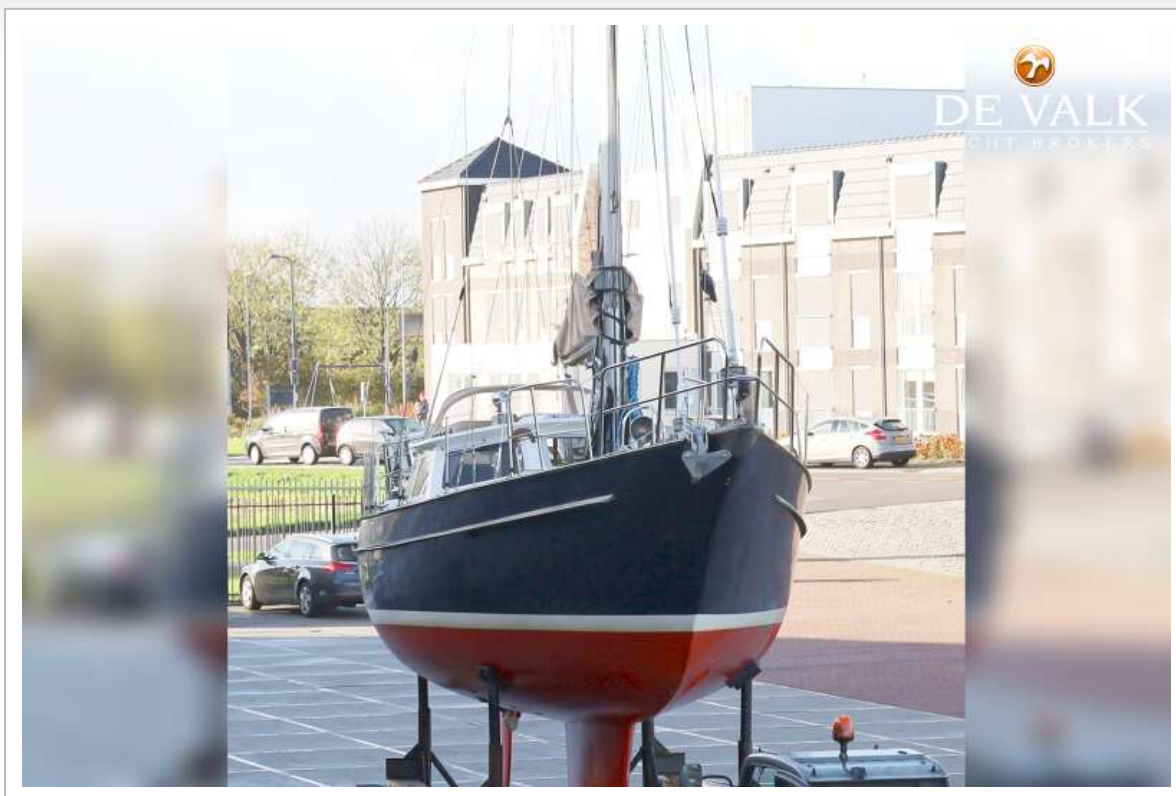
Lewmar halyard jammers & removable jack-stays





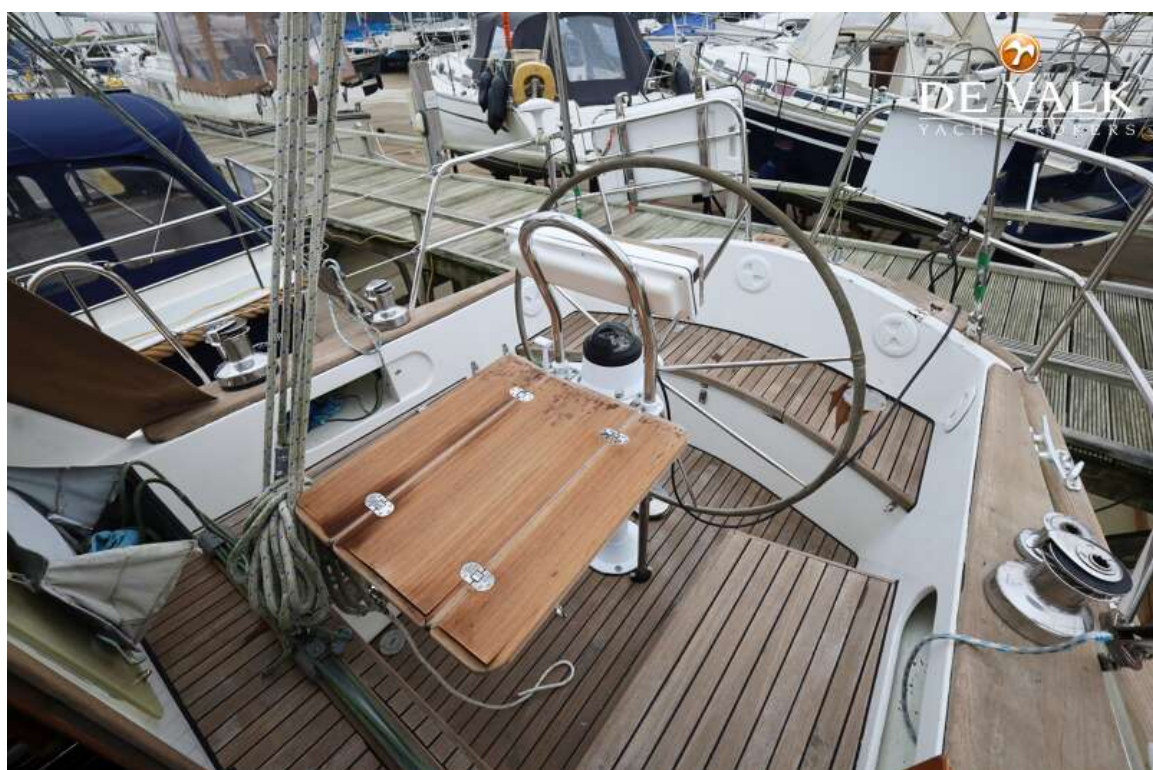




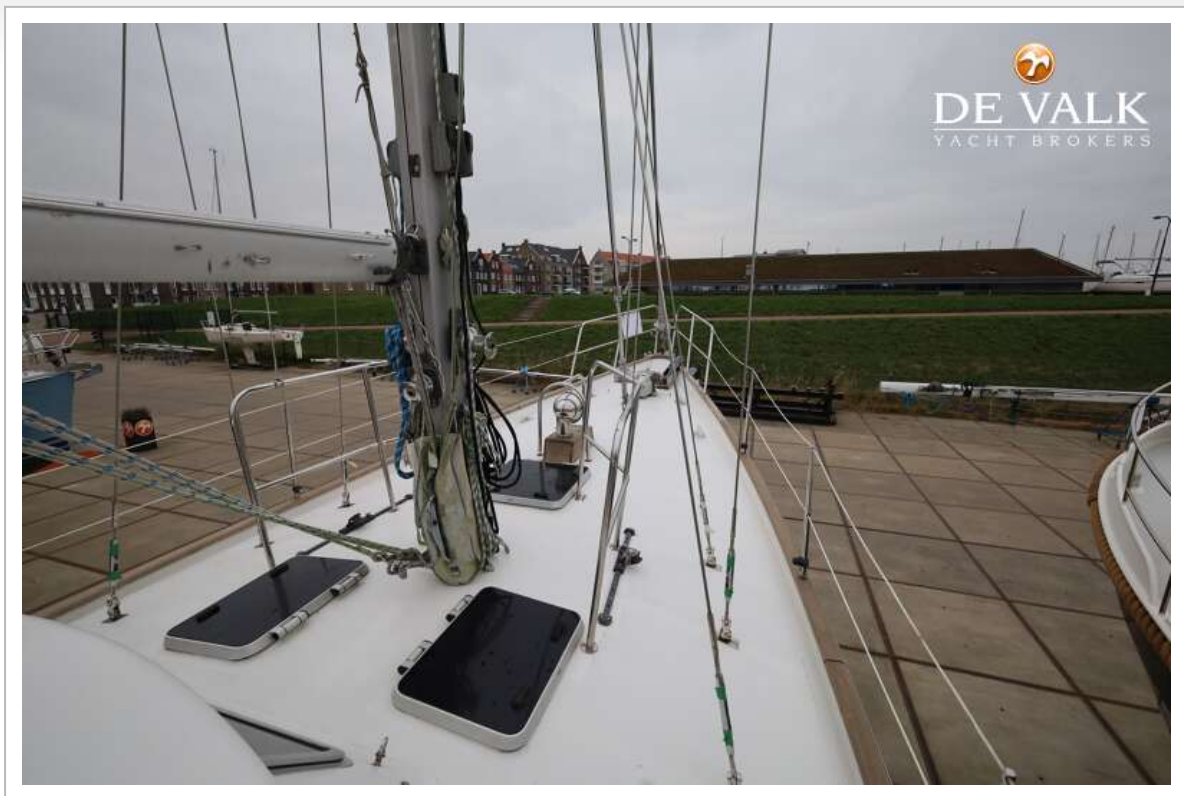


ENDURANCE 38







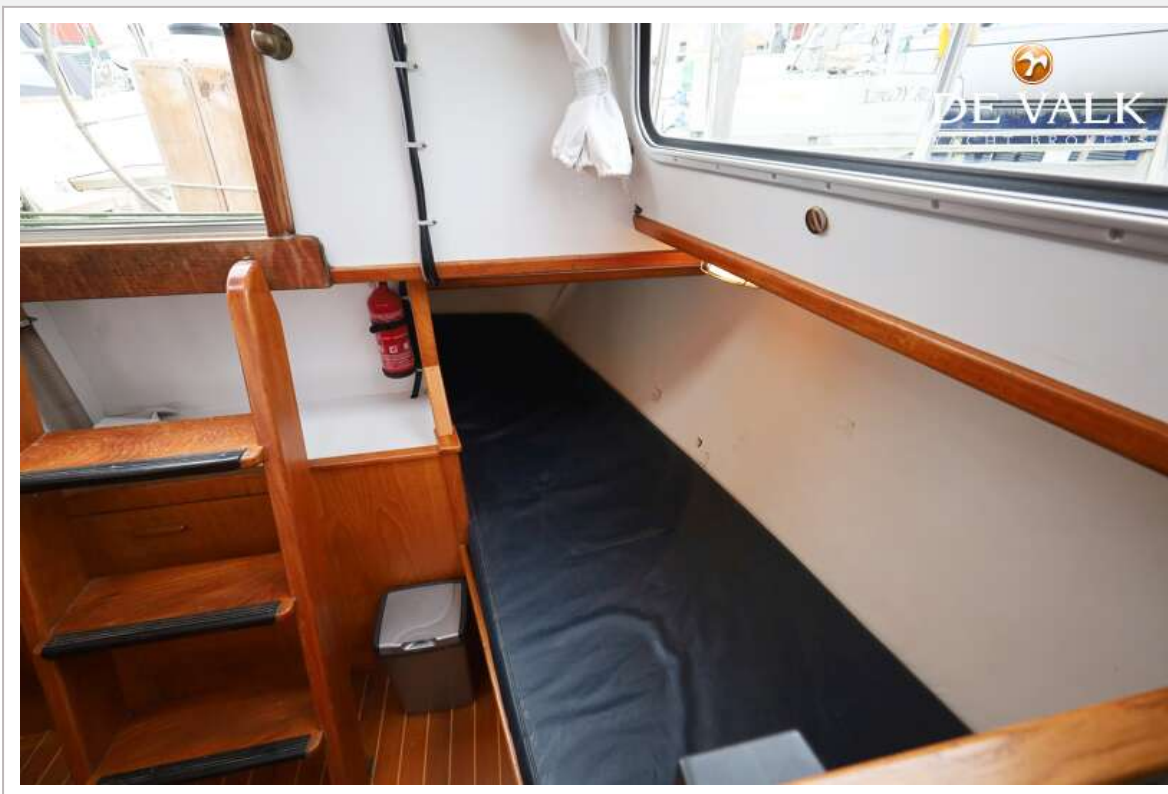




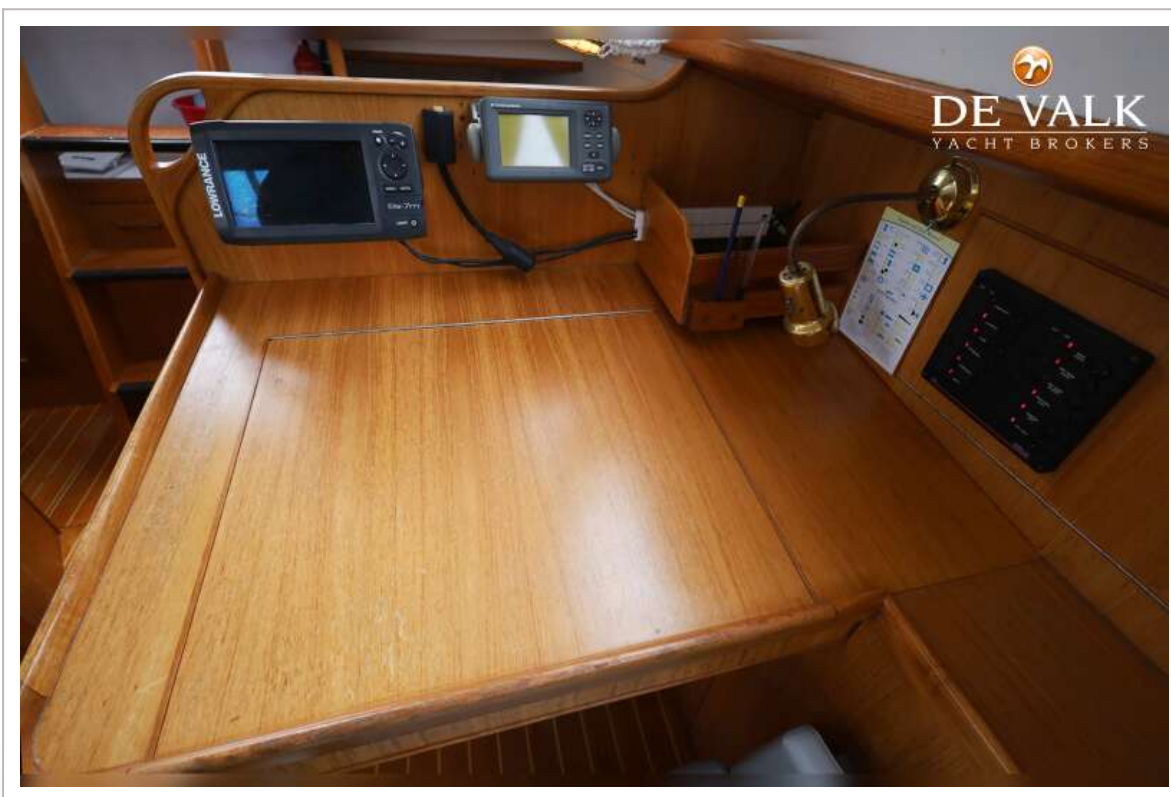


ENDURANCE 38





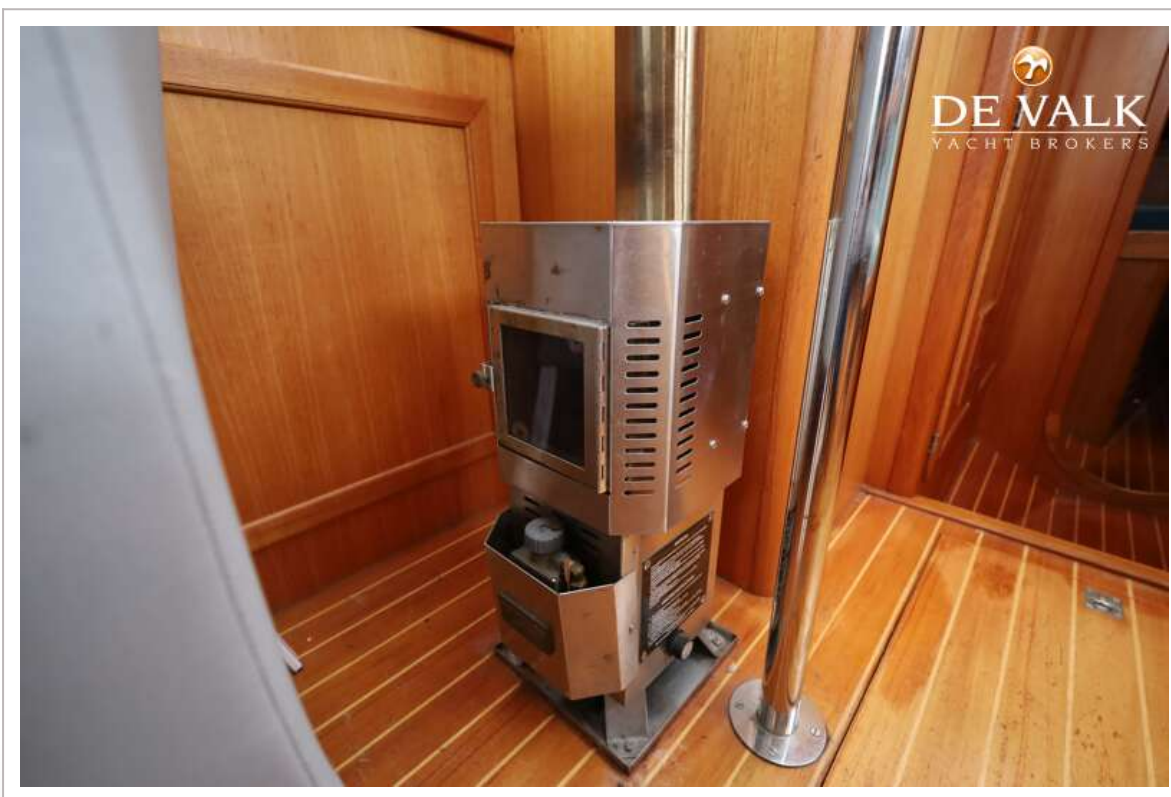
ENDURANCE 38



ENDURANCE 38



ENDURANCE 38









ENDURANCE 38

