



DE VALK
YACHT BROKERS



FERRETTI 530



DE VALK
YACHT BROKERS

BROKER'S COMMENTS

Beautifully maintained Ferretti 530 from the year 2003 called "Pepe". The interior has undergone a refit in 2020 making it now extremely comfortable to entertain on board. This Ferretti 530 is equipped with two strong and reliable Caterpillar C12 diesel engines, bow and stern thruster, a 12KW generator and recent chartplotters on both steering positions. Are you looking for a beautiful flybridge motor yacht? This Ferretti 530 named "Pepe" is definitely worth a visit.

Jochem Heijermans

SPECIFICATIONS

Dimensions	16.80 x 4.70 x 1.45 (m)	Builder	Ferretti Group
Built	2003	Cabins	3
Material	GRP	Berths	7
Engine(s)	2 x Caterpillar C12 diesel	Hp/Kw	2 x 710.00 (hp), 522.56 (kw)
Asking price	sold (VAT)	Lying	elsewhere / Not at sales office

CONTACT

Sales office	De Valk Belgium	Telephone	+32 586 80 218
Address	1401 PT Nieuwpoort BE	E-mail	belgium@devalk.nl

DISCLAIMER

These particulars are given in good faith as supplied but cannot be guaranteed.



GENERAL

Model	FERRETTI 530
Type	motor yacht
LOA (m)	16,80
Beam (m)	4,70
Draft (m)	1,45
Headroom (m)	2,00
Year built	2003
Builder	Ferretti Group
Country	Italy
Displacement (t)	24
Hull material	GRP
Hull colour	off-white
Hull shape	deep-V
Superstructure material	GRP
Rubbing strake	aluminum
Deck material	GRP
Deck finish	non-skid moulded in
Superstructure deck finish	non-skid moulded in
Cockpit deck finish	teak
Antifouling (year)	2023
Window frame	aluminium
Window material	tempered glass
Deckhatch	yes
Portholes	aluminium
Flybridge	yes
Radar arch	yes
Fuel tank (litre)	2400
Level indicator (fuel tank)	yes
Freshwater tank (litre)	750
Level indicator (freshwater)	yes



Blackwater tank (litre)	yes
Blackwater tank extraction	deck extraction + pump
Wheel steering	hydraulic
Flybridge helm position	hydraulic
More info on hull	Polished in 2023

ACCOMMODATION

Cabins	3
Berths	7
Crew cabin	yes
Crew berths	1
Interior	beech
Floor	carpet 2020
Saloon	yes
Air-conditioning	reverse cycle airco
Dinette	yes
Sliding door to cockpit	yes
Galley	yes
Countertop	granite
Sink	stainless steel
Cooker	ceramic Bosch
Oven	Steba
Extractor	yes
Fridge	Candy
Hot water system	220V + engine
Water pressure system	electrical
Owners cabin	French bed
Wardrobe	hanging/drawers/shelves
Bathroom	en suite
Toilet	en suite
Toilet system	electric



Wash basin	in the bathroom
Shower	en suite
Guest cabin 1	double bed
Wardrobe	hanging and drawers
Bathroom	shared
Toilet	yes
Guest cabin 2	twin single
Wardrobe	hanging and drawers
Bathroom	en suite
Toilet	en suite
Toilet system	electric
Wash basin	in the bathroom
Shower	en suite
Flybridge	Kussen flybridge (2020)
Wet bar	On flybridge
Extra info	Cushion aft deck (2020)

MACHINERY

No of engines	2
Make	Caterpillar
Type	C12
HP	710
kW	522.56
Fuel	diesel
Year installed	2003
Maximum speed (kn)	30
Cruising speed (kn)	25
Engine hours	820
Engine cooling system	freshwater heat exchanger
Drive	shaft
Engine controls	electrical



Gearbox	hydraulic
Bowthruster	electric
Sternthruster	electric
Exhaust	watercooled
Thrust bearing	yes
Shaft lubrication	water
Electric bilge pump	yes
Bilge alarm	yes
Electrical installation	12V/24V/220V
Generator	silent separator Mase 12KW
Batteries	yes
Start battery	yes
Service battery	yes
Generator battery	yes
Bowthruster battery	yes
Sternthruster battery	yes
Battery monitor	yes
Battery charger	Mastervolt 24V/50Ah
Inverter	Mastervolt 24V/1500Ah
Shorepower	with cable
Trimtabs	yes

NAVIGATION

Compass	yes
Compass on flybridge	yes
Electric compass	On autopilot
Depth sounder/log	Raymarine ST60
VHF	Shipmate
Autopilot	Raymarine ST6001+
Rudder angle indicator	On autopilot
Radar	Furuno



Plotter/GPS	Raymarine Aixom (2020)
Navigation lights	yes

EQUIPMENT

Fixed windscreen	yes
Cockpit cover	(2020)
Cockpit cushions	yes
Bathing platform	yes
Boarding ladder	stainless steel
Gangway	Besenzoni
Deck shower	yes
Anchor	yes
Windlass	electrical
Sea railing	stainless steel
Grab rail (superstructure)	stainless steel
Pushpit	yes
Pulpit	yes
Wiper	yes
Horn	electric
Fenders	yes
Mooring lines	yes
TV	yes
Surround Sound System	yes



FERRETTI 530



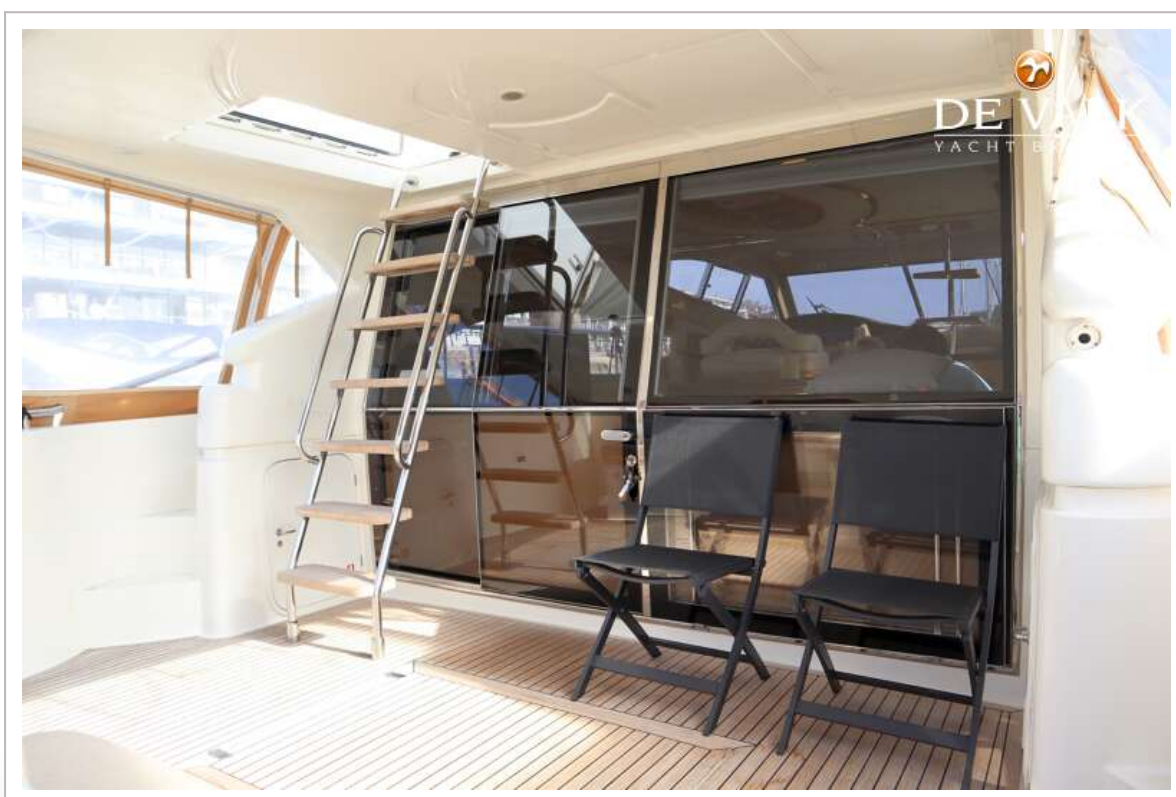
FERRETTI 530



FERRETTI 530



FERRETTI 530



FERRETTI 530



FERRETTI 530



FERRETTI 530



FERRETTI 530



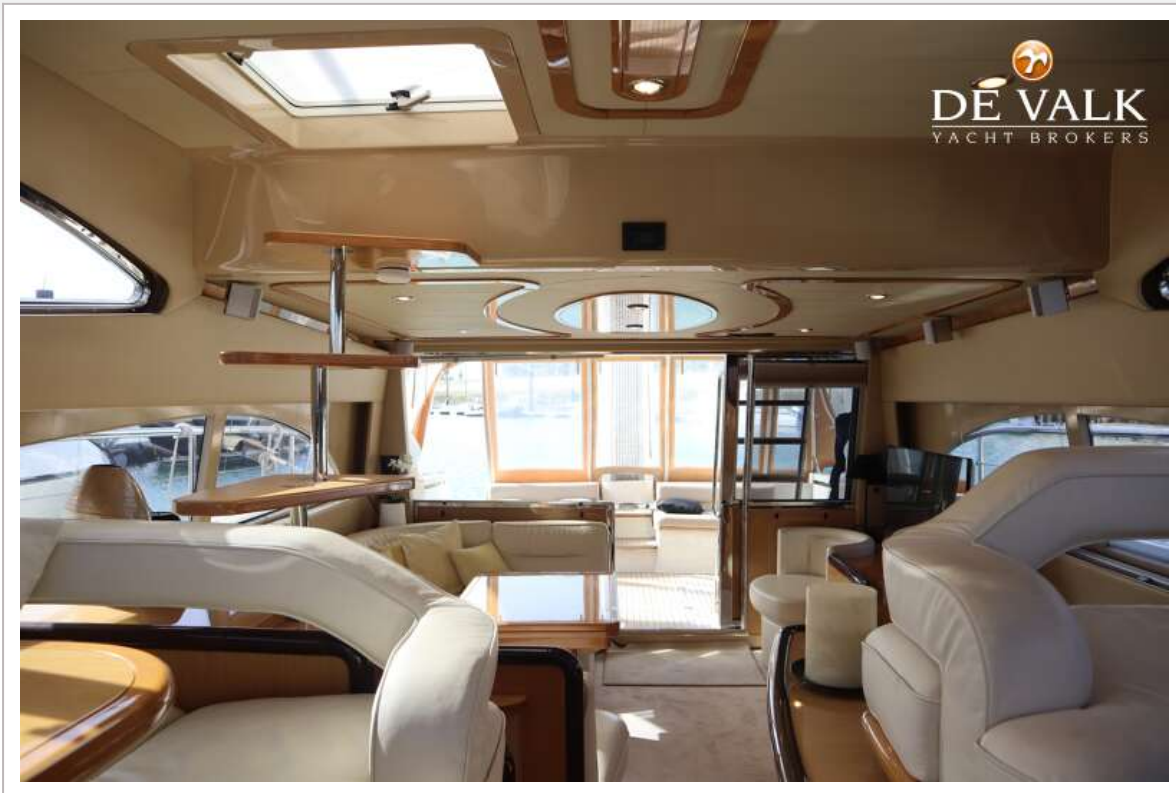
FERRETTI 530



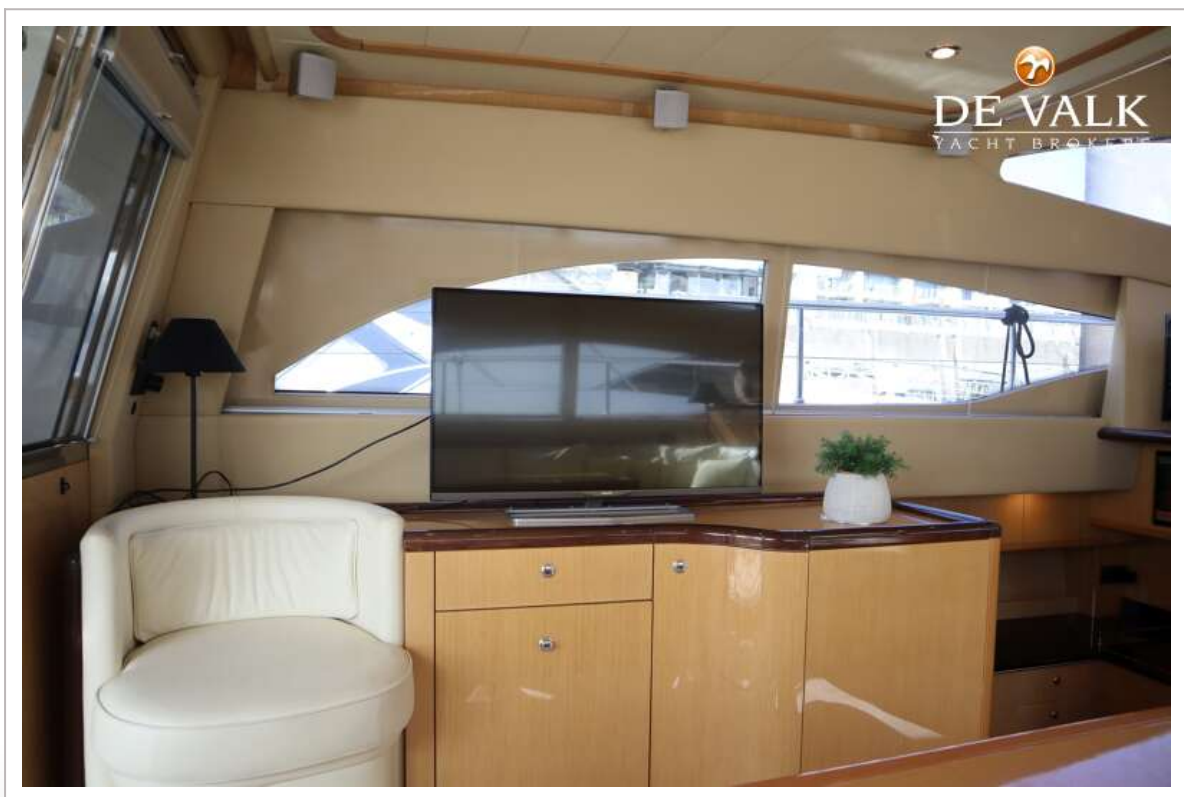
FERRETTI 530



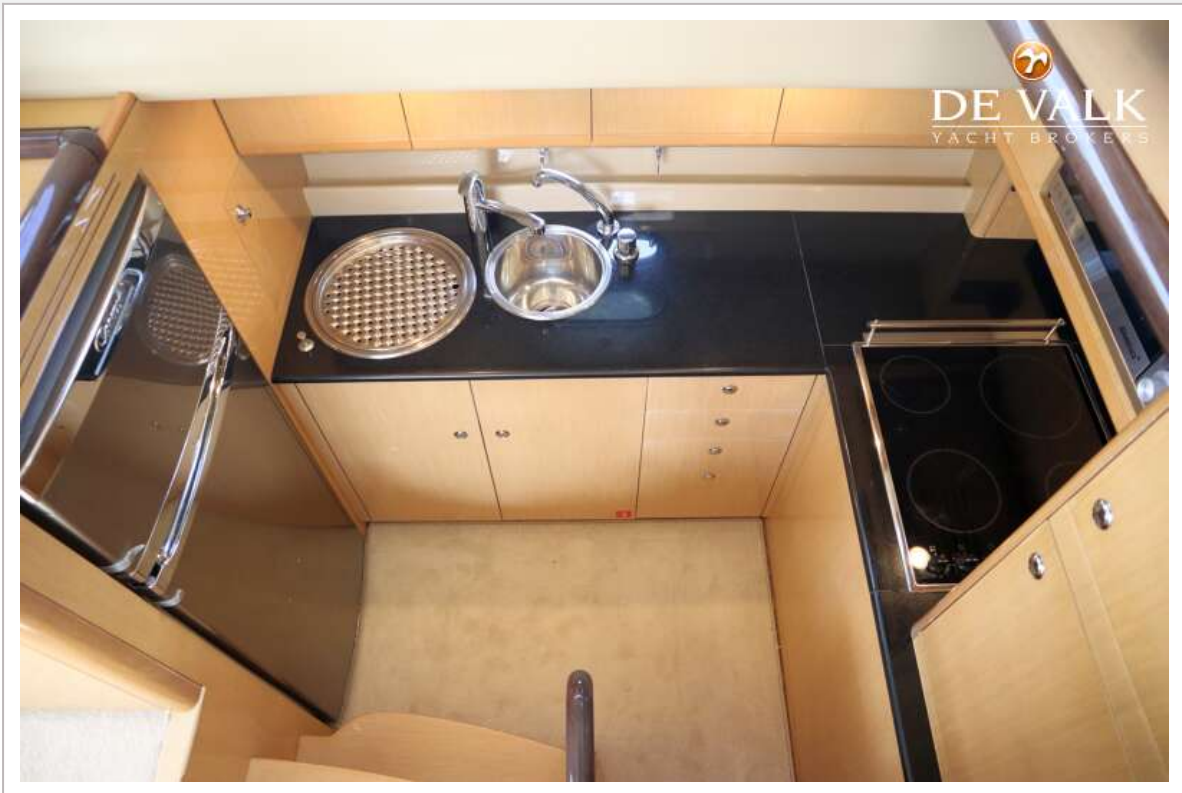
FERRETTI 530



FERRETTI 530



FERRETTI 530



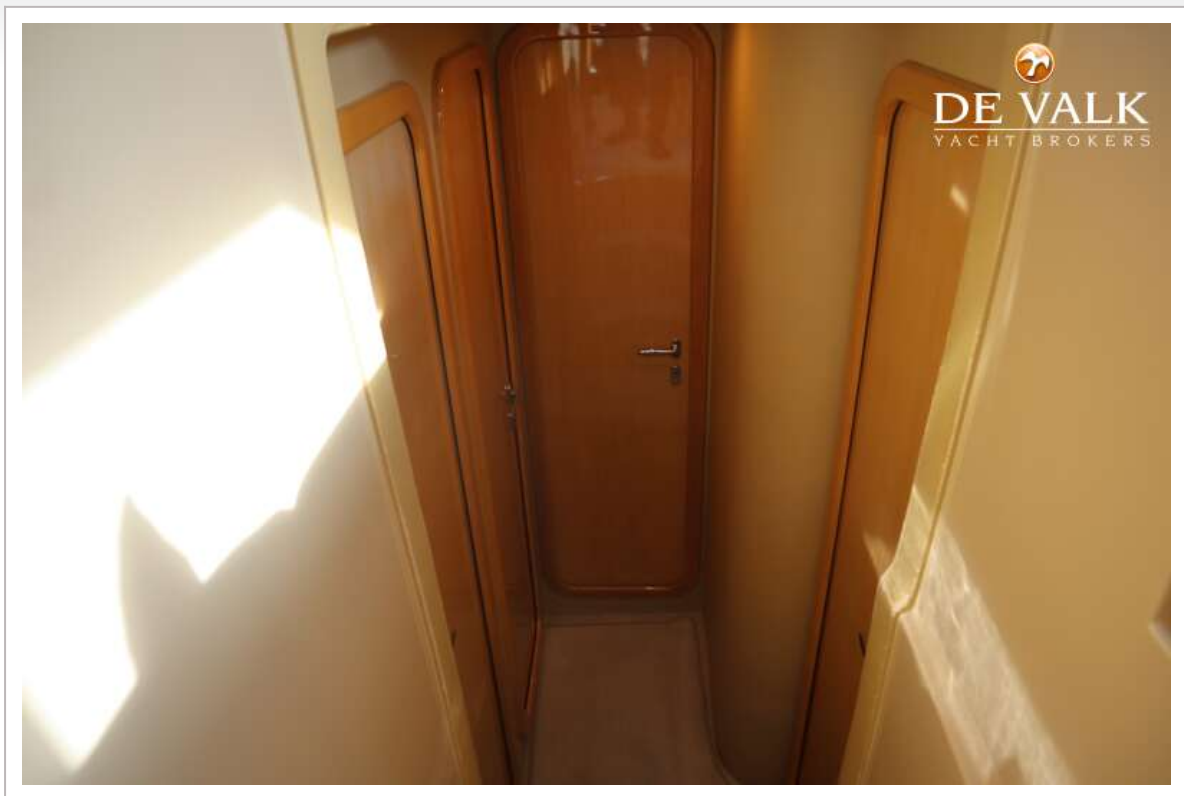
FERRETTI 530

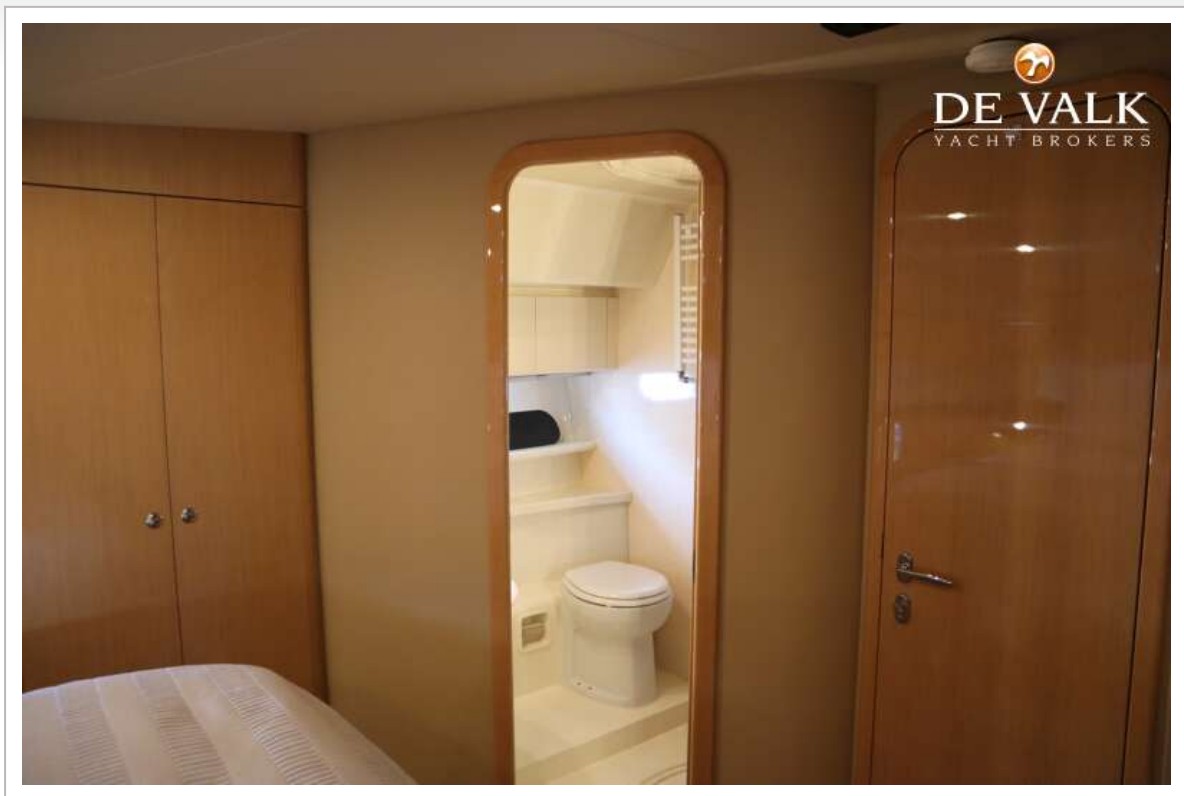


FERRETTI 530



FERRETTI 530

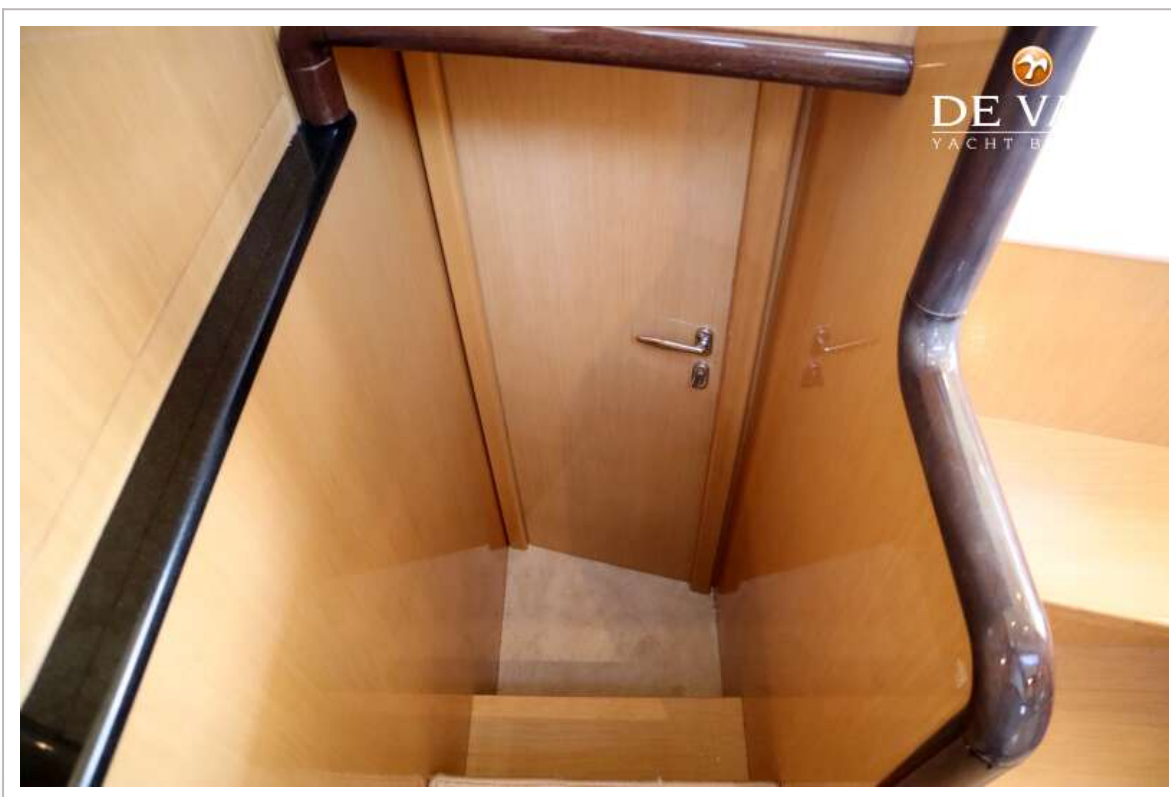




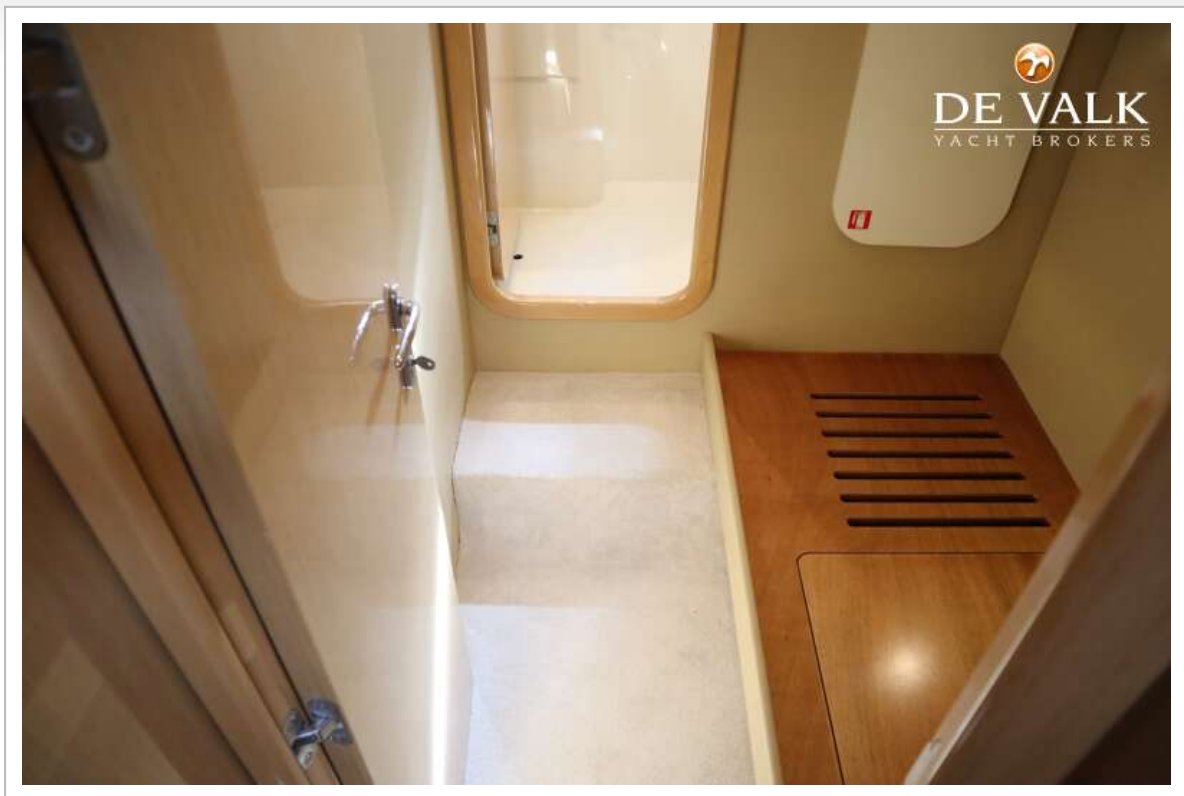
FERRETTI 530



FERRETTI 530



FERRETTI 530



FERRETTI 530



FERRETTI 530

