



DE VALK
YACHT BROKERS



GALEON 440 FLY



DE VALK
YACHT BROKERS

GALEON 440 FLY

BROKER'S COMMENTS

Beautiful and well maintained Galeon 440 FLY by the current first owner from the year 2006. This Galeon 440 FLY is extremely comfortably equipped for long stays on board, even during the winter months. This sporty flybridge motor yacht is equipped with two strong and reliable Volvo Penta IPS-500 engines, making maneuvering a child's play. In 2022 the entire underwater hull was rebuilt so this Galeon 440 FLY is really in very clean condition.

Jochem Heijermans

SPECIFICATIONS

| | | | |
|---------------------|-----------------------------------|----------------|---------------------------------|
| Dimensions | 13.42 x 4.13 x 1.10 (m) | Builder | Galeon Boats |
| Built | 2006 | Cabins | 3 |
| Material | GRP | Berths | 6 |
| Engine(s) | 2 x Volvo Penta D6-IPS 500 diesel | Hp/Kw | 2 x 370.00 (hp), 272.32 (kw) |
| Asking price | sold (VAT) | Lying | elsewhere / Not at sales office |

CONTACT

| | | | |
|---------------------|--------------------------|------------------|-------------------|
| Sales office | De Valk Belgium | Telephone | +32 586 80 218 |
| Address | 1401 PT Nieuwpoort BE | E-mail | belgium@devalk.nl |

DISCLAIMER

These particulars are given in good faith as supplied but cannot be guaranteed.



GENERAL

| | |
|-----------------------------|----------------|
| Model | GALEON 440 FLY |
| Type | motor yacht |
| LOA (m) | 13,42 |
| LWL (m) | 12,75 |
| Beam (m) | 4,13 |
| Draft (m) | 1,10 |
| Headroom (m) | 2,00 |
| Year built | 2006 |
| Builder | Galeon Boats |
| Country | Poland |
| Designer | Galeon Boats |
| Displacement (t) | 18 |
| Hull material | GRP |
| Hull colour | white |
| Hull shape | deep-V |
| Superstructure material | GRP |
| Rubbing strake | aluminum |
| Deck material | GRP |
| Deck finish | teak |
| Cockpit deck finish | teak |
| Antifouling (year) | 2023 |
| Window frame | aluminium |
| Window material | tempered glass |
| Deckhatch | yes |
| Portholes | aluminium |
| Flybridge | yes |
| Flybridge cover | yes |
| Radar arch | yes |
| Fuel tank (litre) | 2x 750 |
| Level indicator (fuel tank) | yes |



| | |
|------------------------------|---|
| Freshwater tank (litre) | 500 |
| Level indicator (freshwater) | yes |
| Blackwater tank (litre) | yes |
| Blackwater tank extraction | deck extraction + pump |
| Wheel steering | yes |
| Flybridge helm position | yes |
| More info on hull | Underwater ship completely rebuilt 2022 |

ACCOMMODATION

| | |
|-------------------------|-------------------------------|
| Cabins | 3 |
| Berths | 6 |
| Interior | teak |
| Floor | teak and holly And carpet |
| Saloon | yes |
| Headroom saloon (m) | 2.00 |
| Heating | diesel ducted hot air Webasto |
| Sliding door to cockpit | yes |
| Galley | yes |
| Countertop | corian |
| Sink | Corian 2x |
| Cooker | induction Siemens |
| Microwave | Siemens |
| Fridge | yes |
| Hot water system | 220V + engine |
| Water pressure system | electrical |
| Owners cabin | French bed |
| Wardrobe | hanging and shelves |
| Bathroom | en suite |
| Toilet | en suite |
| Toilet system | electric |
| Wash basin | in the bathroom |



GALEON 440 FLY

| | |
|---------------|---------------------|
| Guest cabin 1 | double bed |
| Wardrobe | hanging and shelves |
| Bathroom | shared |
| Toilet | shared |
| Toilet system | electric |
| Wash basin | in the bathroom |
| Shower | shared |
| Guest cabin 2 | twin single |
| Flybridge | yes |
| Wet bar | On flybridge |

MACHINERY

| | |
|-------------------------|---------------------------|
| No of engines | 2 |
| Make | Volvo Penta |
| Type | D6-IPS 500 |
| HP | 370 |
| kW | 272.32 |
| Fuel | diesel |
| Year installed | 2007 |
| Maximum speed (kn) | 26 |
| Cruising speed (kn) | 22 |
| Engine hours | 950 |
| Engine cooling system | freshwater heat exchanger |
| Drive | IPS |
| Engine controls | electrical |
| Bowthruster | electric |
| Exhaust | watercooled |
| Electric bilge pump | yes |
| Electrical installation | 12V/220V |
| Batteries | yes |
| Start battery | yes |



| | |
|-----------------|------------------|
| Service battery | yes |
| Battery charger | Victron 12V/60Ah |
| Shorepower | with cable |
| Trimtabs | yes |

NAVIGATION

| | |
|------------------------|--------------------|
| Compass | yes |
| Compass on flybridge | yes |
| Depth sounder | Raymarine ST60+ |
| Log | Raymarine ST60+ |
| Repeater | On flybridge |
| VHF | Garmin VHF200i |
| VHF handheld | yes |
| Autopilot | Garmin GHC10 |
| Rudder angle indicator | yes |
| Radar/GPS/plotter | Garmin GPSmap 5008 |
| AIS transceiver | yes |
| Navigation lights | yes |

EQUIPMENT

| | |
|------------------|--------------------------------------|
| Fixed windscreen | yes |
| Cockpit cover | yes |
| Cockpit cushions | Galeon set (2012) + flybridge (2012) |
| Cockpit table | yes |
| Cockpit chairs | yes |
| Bathing platform | yes |
| Boarding ladder | stainless steel |
| Deck shower | yes |
| Anchor | yes |
| Windlass | electrical |
| Sea railing | stainless steel |



GALEON 440 FLY

| | |
|----------------------------|-----------------|
| Grab rail (superstructure) | stainless steel |
| Pushpit | yes |
| Pulpit | yes |
| Wiper | yes |
| Horn | electric |
| Fenders | yes |
| Mooring lines | yes |
| TV | yes |
| Radio | yes |
| Speakers in salon | yes |



GALEON 440 FLY



GALEON 440 FLY



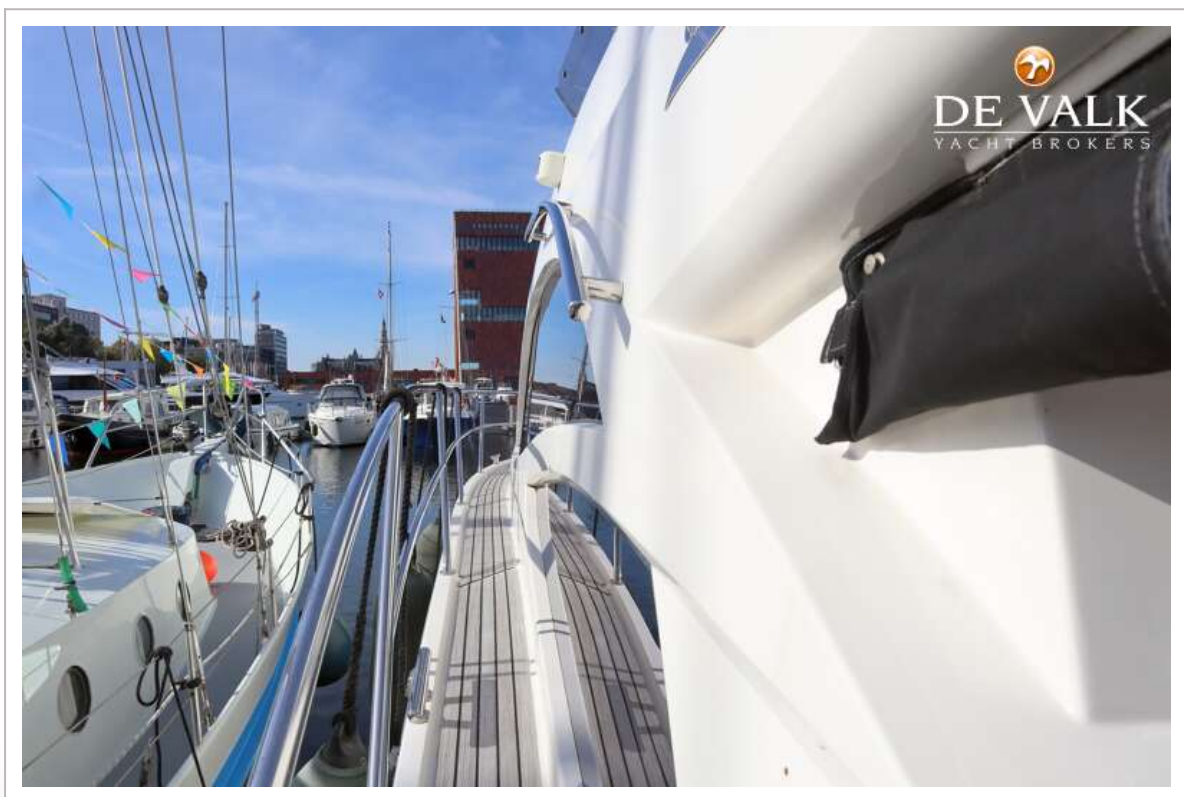
GALEON 440 FLY



GALEON 440 FLY



GALEON 440 FLY



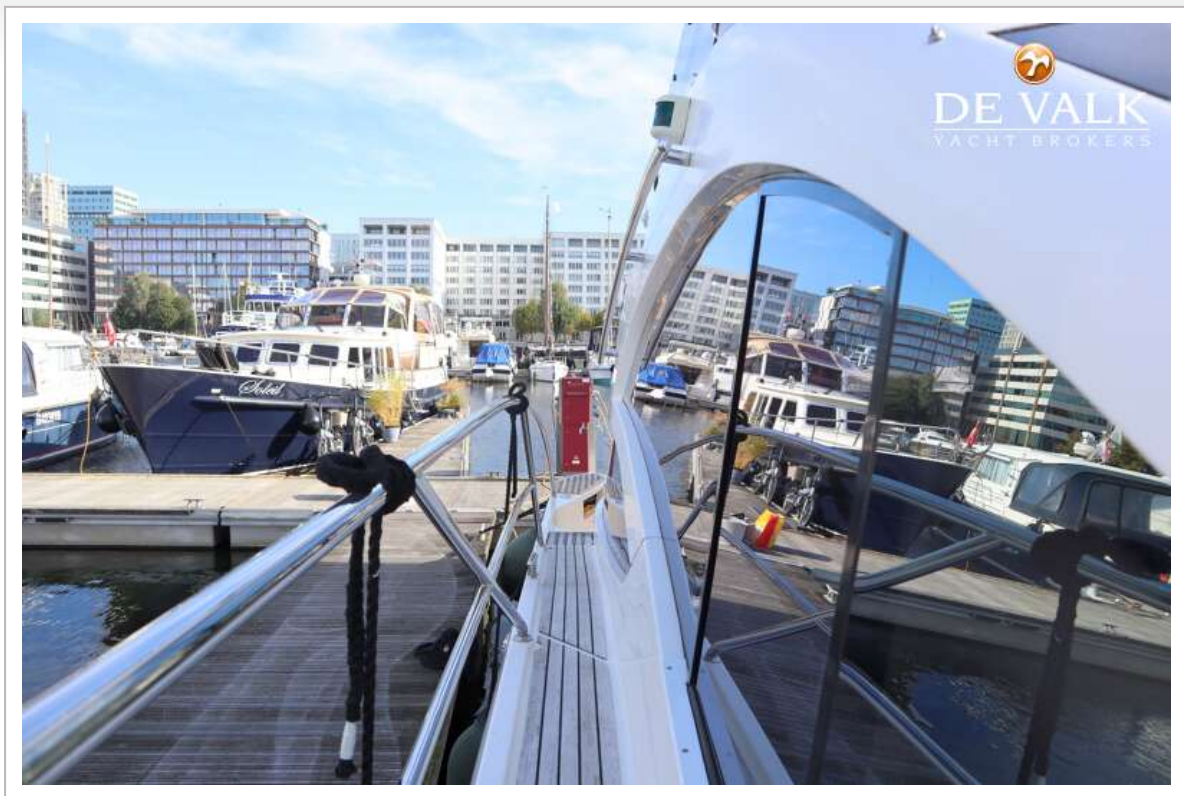
GALEON 440 FLY



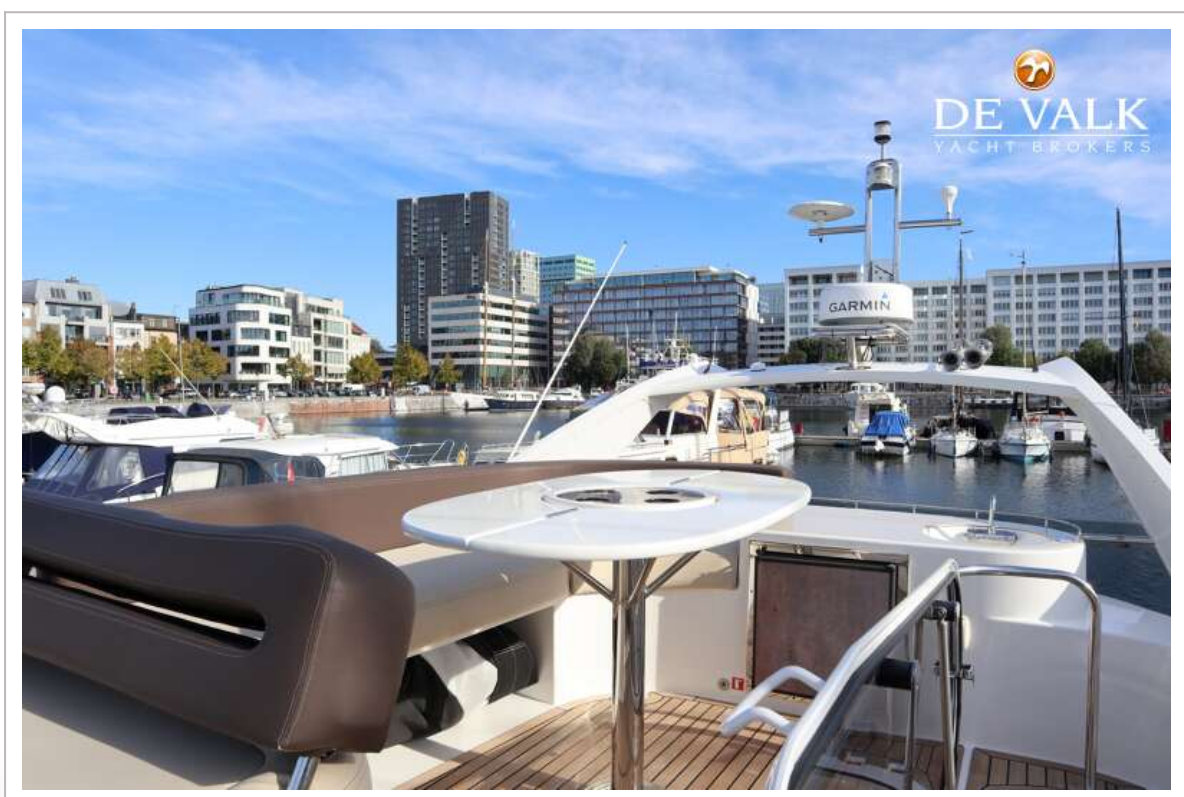
GALEON 440 FLY



GALEON 440 FLY



GALEON 440 FLY



GALEON 440 FLY



GALEON 440 FLY



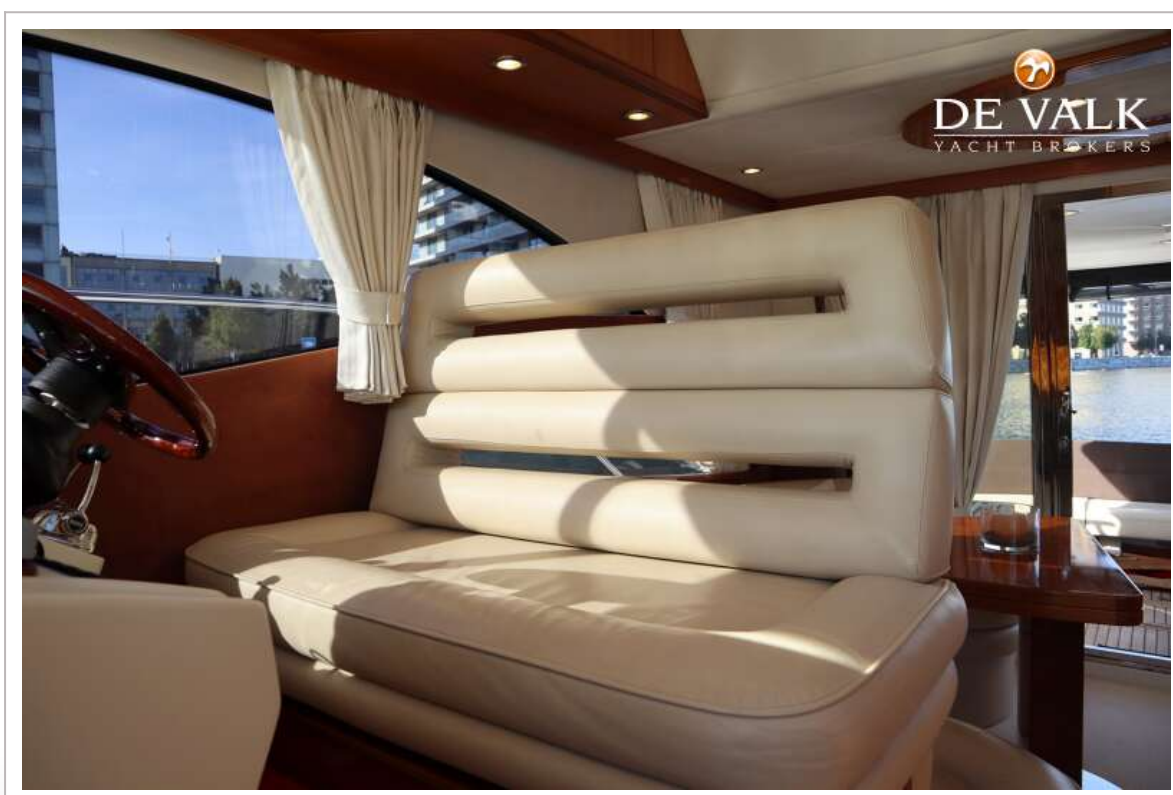
GALEON 440 FLY



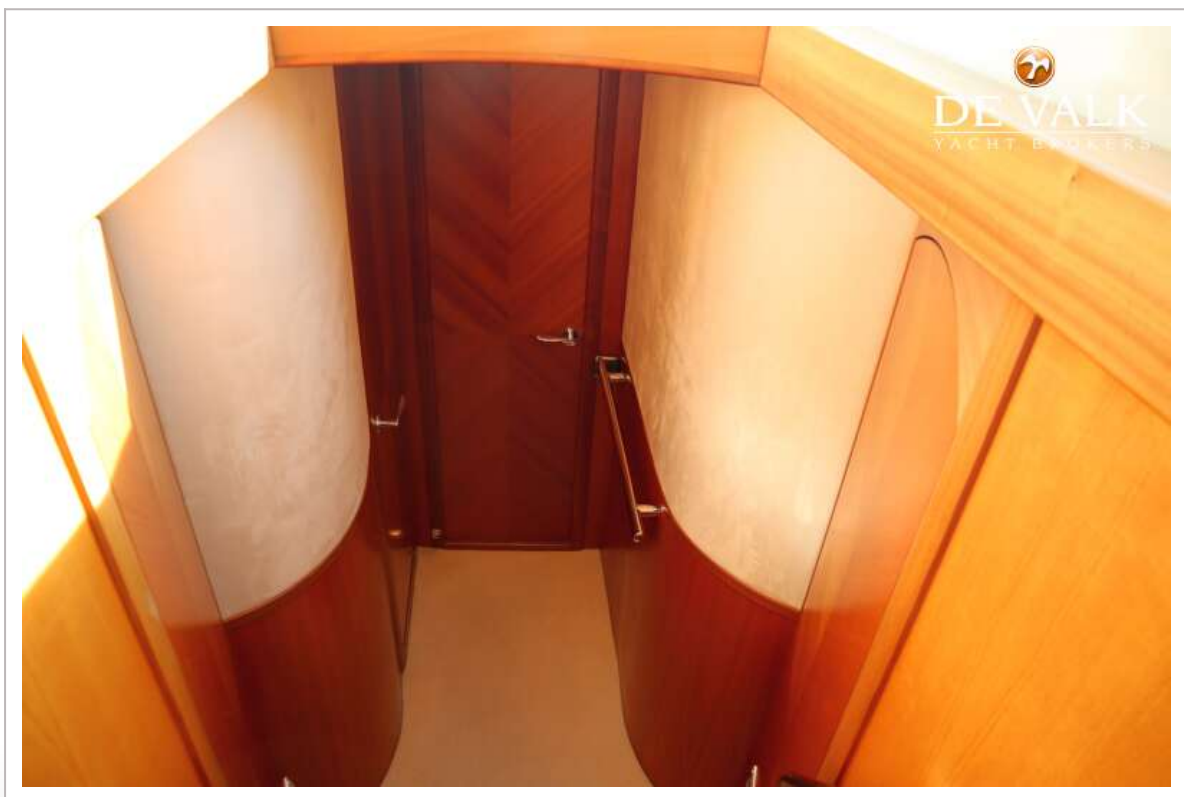
GALEON 440 FLY



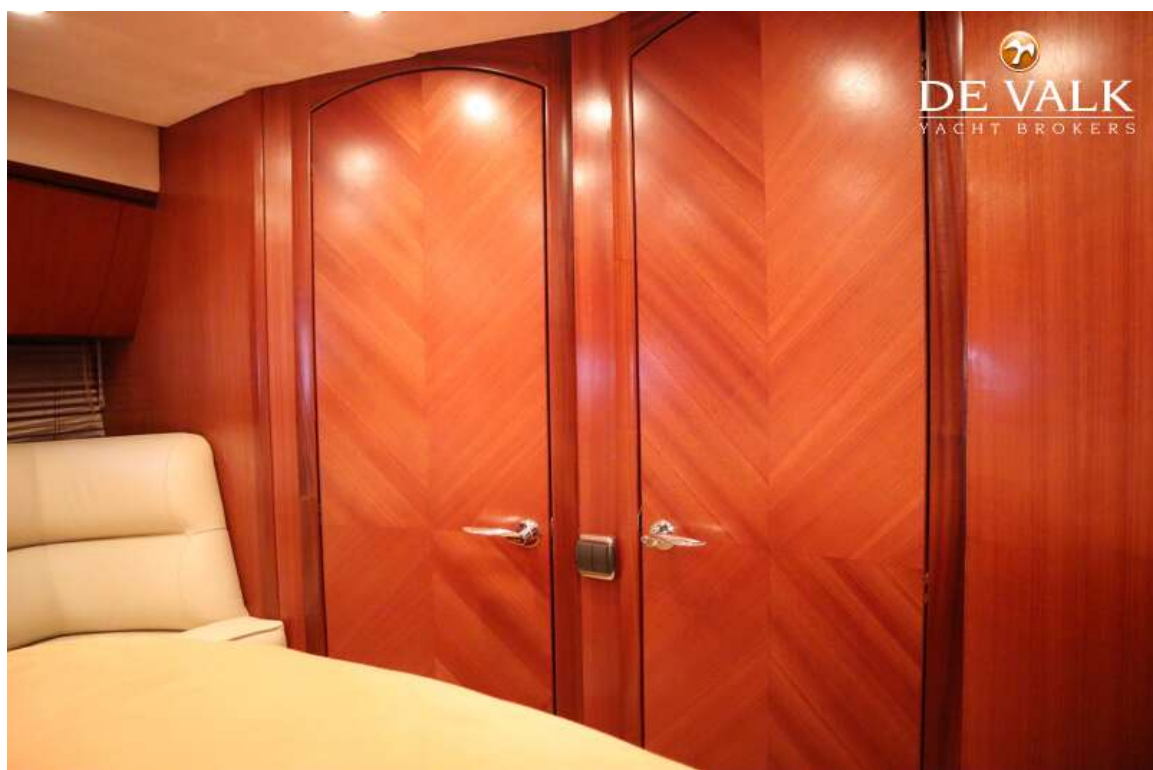
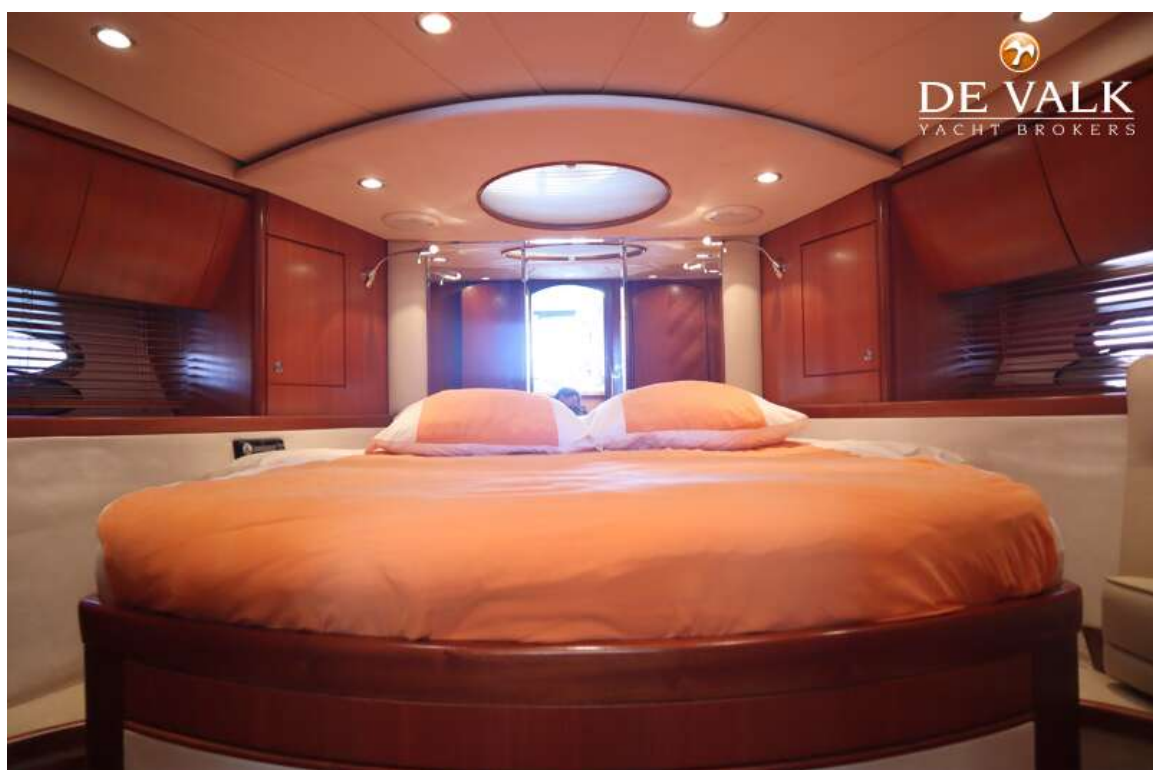
GALEON 440 FLY



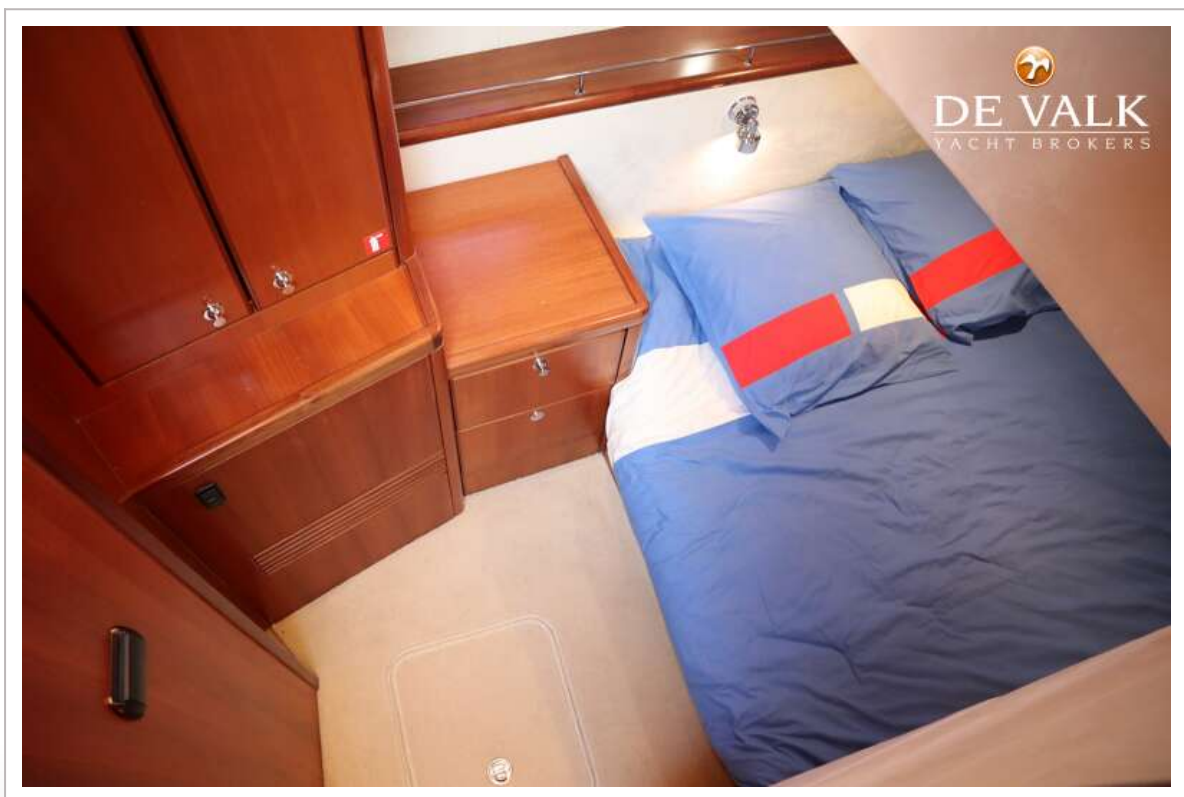
GALEON 440 FLY



GALEON 440 FLY



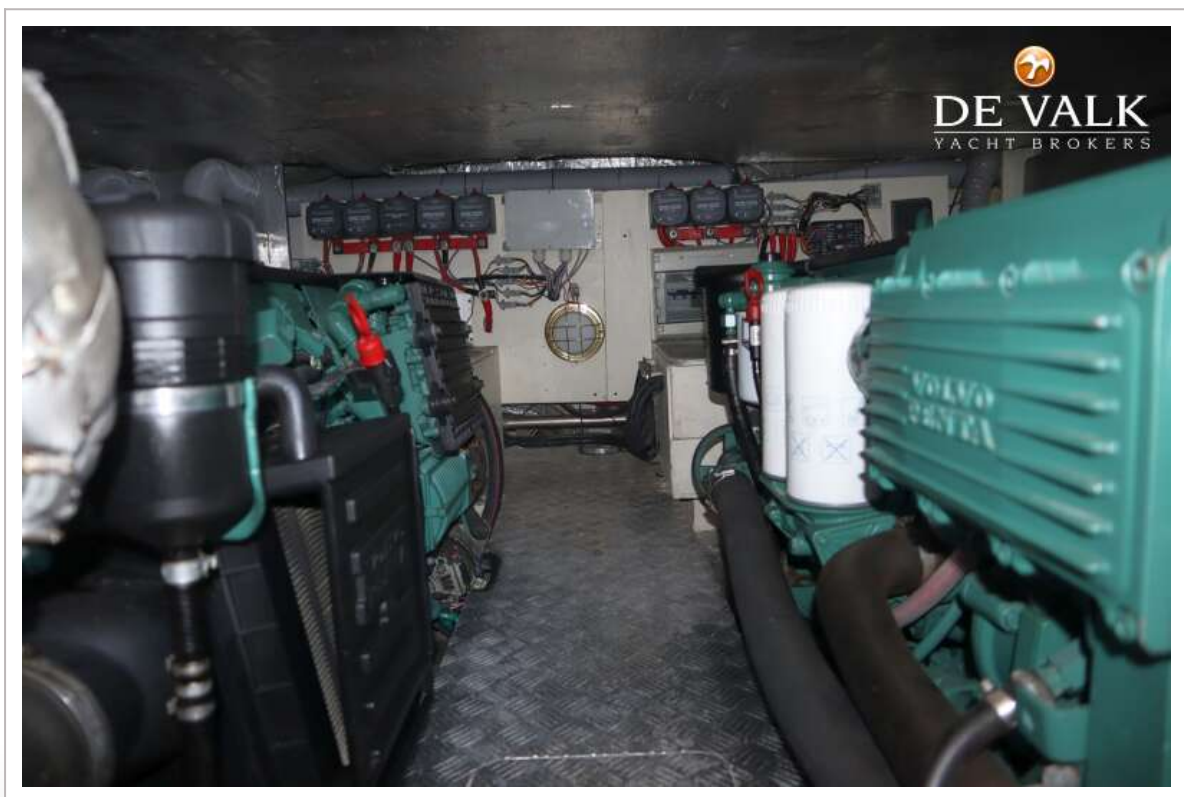
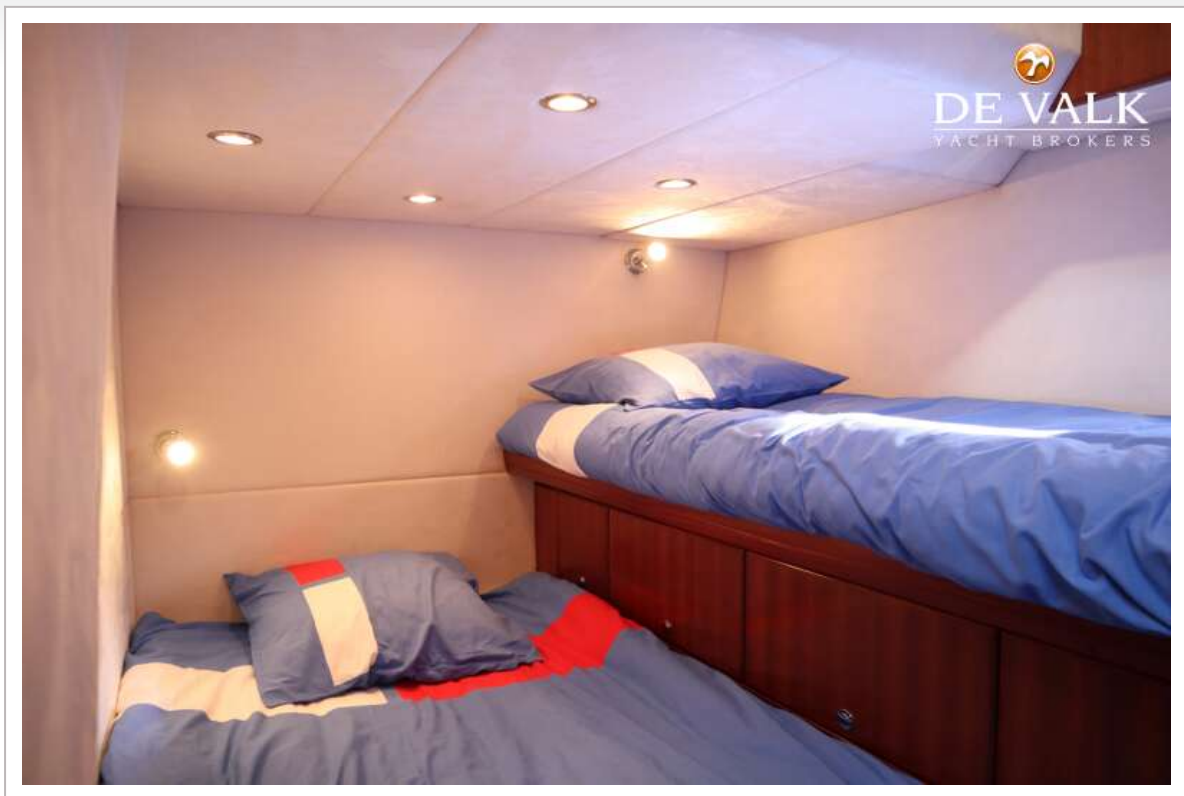
GALEON 440 FLY



GALEON 440 FLY



GALEON 440 FLY



GALEON 440 FLY



