



DE VALK  
YACHT BROKERS



## BAVARIA 36 HOLIDAY



DE VALK  
YACHT BROKERS

# BAVARIA 36 HOLIDAY

## BROKER'S COMMENTS

Looking for a nice and reliable family yacht? This Bavaria 36 Holiday is definitely worth your attention. More spacious than the Bavaria 36 2000 series, the 36 Holiday has a higher quality of finish, and among other things has a German Lloyds specification. Her interior woodwork is neat, she has lots of storage space and is much appreciated as a family yacht. Much has been renewed during the years and the owners of the boat kept her in a good condition. She is now available for a visit on shore at our office in Sint Annaland.

*Joris van de Rijt*

## SPECIFICATIONS

|                     |                               |                |                        |
|---------------------|-------------------------------|----------------|------------------------|
| <b>Dimensions</b>   | 11.48 x 3.68 x 1.85 (m)       | <b>Builder</b> | Bavaria Yachbau GmbH   |
| <b>Built</b>        | 1998                          | <b>Cabins</b>  | 3                      |
| <b>Material</b>     | GRP                           | <b>Berths</b>  | 8                      |
| <b>Engine(s)</b>    | 1 x Volvo Penta MD2030 diesel | <b>Hp/Kw</b>   | 29.00 (hp), 21.34 (kw) |
| <b>Asking price</b> | sold (VAT )                   | <b>Lying</b>   | at sales office        |

## CONTACT

|                     |  |                  |                        |
|---------------------|--|------------------|------------------------|
| <b>Sales office</b> | De Valk Sint Annaland B.V.                   | <b>Telephone</b> | +31 (0)166 601 000     |
| <b>Address</b>      | Koelhuisweg 4<br>4697 RM Sint Annaland<br>NL | <b>E-mail</b>    | sintannaland@devalk.nl |

## DISCLAIMER

These particulars are given in good faith as supplied but cannot be guaranteed.



## GENERAL

|                            |   |
|----------------------------|---|
| Model                      | BAVARIA 36 HOLIDAY                      |
| Type                       | sailing yacht                           |
| LOA (m)                    | 11,48                                   |
| LWL (m)                    | 9,05                                    |
| Beam (m)                   | 3,68                                    |
| Draft (m)                  | 1,85                                    |
| Air draft (m)              | 17,50                                   |
| Headroom (m)               | 1,95                                    |
| Year built                 | 1998                                    |
| Builder                    | Bavaria Yachbau GmbH                    |
| Country                    | Germany                                 |
| Designer                   | J&J Design                              |
| Displacement (t)           | 5,5                                     |
| Ballast (tonnes)           | cast iron 1,7                           |
| CE norm                    | A                                       |
| Hull material              | GRP                                     |
| Hull colour                | white                                   |
| Hull shape                 | round-bilged                            |
| Keel type                  | fin keel                                |
| Superstructure material    | GRP                                     |
| Rubbing strake             | aluminum                                |
| Deck material              | GRP                                     |
| Deck finish                | non-skid moulded in                     |
| Superstructure deck finish | non-skid moulded in                     |
| Cockpit deck finish        | teak (needs to be repaired or replaced) |
| Antifouling (year)         | 03-2023                                 |
| Window frame               | aluminium                               |
| Window material            | polycarbonate                           |
| Deckhatch                  | Gebo                                    |
| Portholes                  | aluminium                               |



|                              |                                 |
|------------------------------|---------------------------------|
| Fuel tank (litre)            | polyethylene 150                |
| Level indicator (fuel tank)  | yes                             |
| Freshwater tank (litre)      | polyethylene 2 x 170            |
| Level indicator (freshwater) | yes                             |
| Wheel steering               | cable steering Whitlock         |
| Emergency tiller             | yes                             |
| Extra info                   | 2019 underwaterbody sanded down |

## ACCOMMODATION

|                               |   |
|-------------------------------|---|
| Cabins                        | 3   |
| Berths                        | 8   |
| Interior                      | mahogany  |
| Floor                         | teak and holly  |
| Saloon                        | yes   |
| Headroom saloon (m)           | 1,95  |
| Heating                       | diesel ducted hot air Preperation only. Heating defect and not present. |
| Chart table                   | yes   |
| Aft Cabin                     | 2 x   |
| Dinette to convert into berth | yes   |
| Sliding door to cockpit       | (new perspex sliding hatch 2018)  |
| Galley                        | yes   |
| Countertop                    | plastic   |
| Sink                          | stainless steel 2 x   |
| Cooker                        | calor gas Bavaria 2 burner (with new plastic cover 2018)                |
| Oven                          | Bavaria   |
| Microwave                     | In forward cabin (new 2018)   |
| Fridge                        | Coolmatic   |
| Hot water system              | 220V + engine   |
| Water pressure system         | electrical  |
| Owners cabin                  | v-bed   |



|                |                                      |
|----------------|--------------------------------------|
| Bed length (m) | 2,00 x 1,80                          |
| Wardrobe       | hanging and shelves                  |
| Bathroom       | shared                               |
| Toilet         | shared (new 2018)                    |
| Toilet system  | manual                               |
| Wash basin     | in the bathroom                      |
| Shower         | shared                               |
| Guest cabin 1  | double bed                           |
| Bed length (m) | 2,00 x 1,40                          |
| Wardrobe       | hanging and shelves                  |
| Guest cabin 2  | double bed                           |
| Bed length (m) | 2,00 x 1,40                          |
| Wardrobe       | drawers and shelves                  |
| Extra info     | LED interior lights                  |
| Extra info     | New Alcantara saloon upholstery 2019 |

## MACHINERY

|                       |                           |
|-----------------------|---------------------------|
| No of engines         | 1                         |
| Make                  | Volvo Penta               |
| Type                  | MD2030                    |
| HP                    | 29                        |
| kW                    | 21.34                     |
| Fuel                  | diesel                    |
| Year installed        | 1998                      |
| Maximum speed (kn)    | 7                         |
| Cruising speed (kn)   | 6                         |
| Consumption (l/hr)    | 2,5                       |
| Engine hours          | Defect. Estimated 1850    |
| Engine cooling system | freshwater heat exchanger |
| Drive                 | sail-drive                |
| Saildrive seal        | Replaced in 2016          |



|                         |   |
|-------------------------|---|
| Engine controls         | bowden cable                            |
| Gearbox                 | mechanical                              |
| Bowthruster             | electric Engbo 2009 + remote control    |
| Propeller type          | fixed                                   |
| Propeller blades        | 2                                       |
| Manual bilge pump       | yes                                     |
| Electric bilge pump     | yes                                     |
| Electrical installation | 12V / 220V                              |
| Start battery           | 1 x 100 Ah (new 2022)                   |
| Service battery         | 1 x 165 Ah (new 2022)                   |
| Battery monitor         | yes                                     |
| Battery charger         | Victron Blue Power Charger 12/30 (2018) |
| Inverter                | Phoenix Inverter 12/300 (2018)          |
| Diode battery combiners | yes                                     |
| Shorepower              | with cable                              |

## NAVIGATION

|                   |   |
|-------------------|---|
| Compass           | Suunto (2018)                                   |
| Depth sounder     | Raymarine I70S (2018)                           |
| Log               | Raymarine I70S (2018)                           |
| Windset           | Autohelm ST50                                   |
| VHF               | Shipmate RS8300 (new antenna + mast cable 2022) |
| Autopilot         | Autohelm ST4000+ (not working)                  |
| Plotter           | Raymarine ES78                                  |
| AIS receiver      | yes   |
| Navigation lights | yes   |
| Extra info        | Additional 220V sockets installed in 2019       |

## EQUIPMENT

|               |   |
|---------------|---|
| Sprayhood     | (2010)  |
| Cockpit cover | 2010 (new windows 2018) - cockpit cover bracket isn't present |



|                            |                                 |
|----------------------------|---------------------------------|
| Cockpit table              | Teak                            |
| Bathing platform           | yes                             |
| Boarding ladder            | stainless steel                 |
| Deck shower                | Hot & cold on swimming platform |
| Anchor                     | CQR Plough                      |
| Anchor chain               | Chain & rope                    |
| Sea railing                | stainless steel                 |
| Grab rail (superstructure) | stainless steel                 |
| Railing side opening gates | 2 x                             |
| Pushpit                    | yes                             |
| Pulpit                     | yes                             |
| Life raft                  | container Radeau Seasafe (2017) |
| Life raft (pers)           | 6                               |
| Last life raft survey      | 2017                            |
| Lifebuoy                   | yes                             |
| Radar reflector            | yes                             |
| Fenders                    | (new 2018)                      |
| Mooring lines              | yes                             |
| TV                         | Sharp 80cm Smart TV (2019)      |
| Radio-cd player            | Caliber (2018)                  |
| Speakers in salon          | yes                             |
| Fire extinguisher          | 3 x                             |
| Latest extinguisher survey | 2018                            |

## RIGGING

|                  |                      |
|------------------|----------------------|
| Rigging          | sloop                |
| Standing rigging | wire Checked in 2019 |
| Brand mast       | Seldén               |
| Material mast    | aluminium            |
| Spreaders        | 2 x 2                |
| Mainsail         | Wittevrongel (2018)  |



|                           |  |
|---------------------------|--|
| <b>Stoway mast</b>        | yes  |
| <b>Genoa</b>              | Elvstrom                                       |
| <b>Genoa furler</b>       | Furlex   |
| <b>Reefing System</b>     | main in-mast furling                           |
| <b>Backstay adjuster</b>  | tackle   |
| <b>Boomvang</b>           | tackle   |
| <b>Genoa sheetwinches</b> | 2 x Harken 40 ST                               |
| <b>Halyard winches</b>    | 2 x Harken 32 ST                               |
| <b>Extra info</b>         | Mast checked/maintained in 2022 + New halyards |





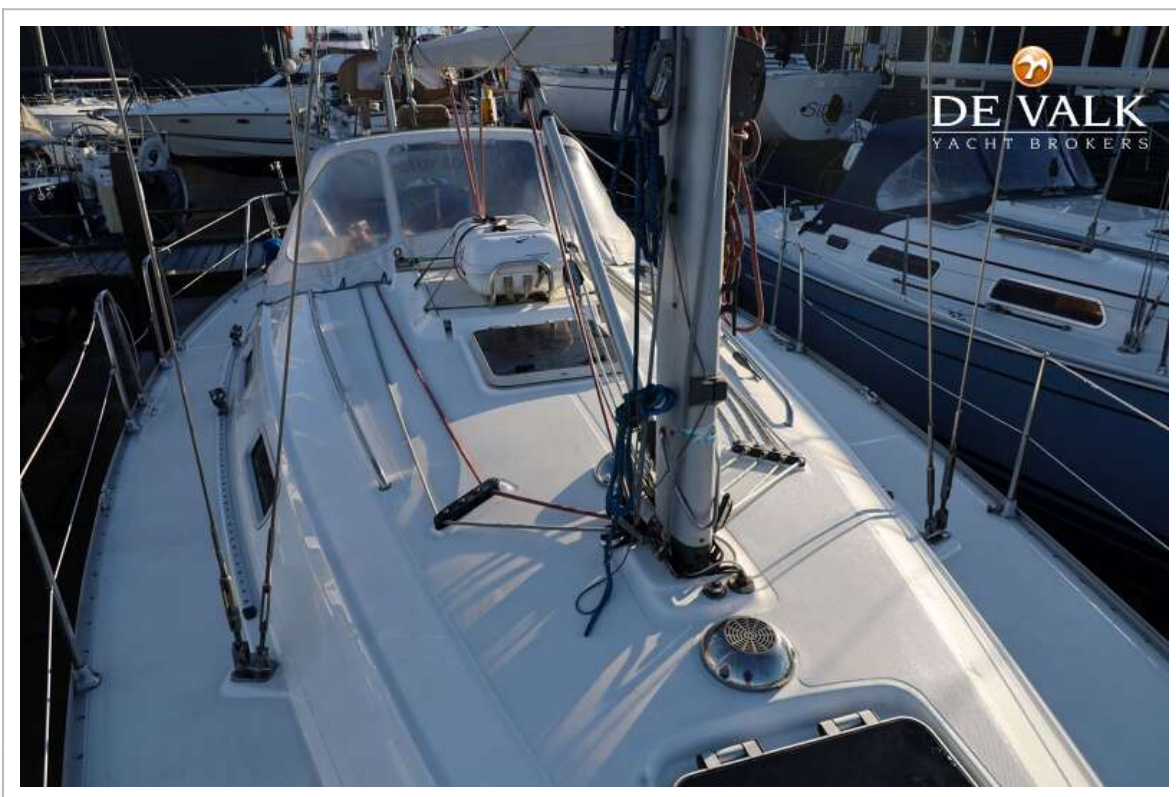
# BAVARIA 36 HOLIDAY











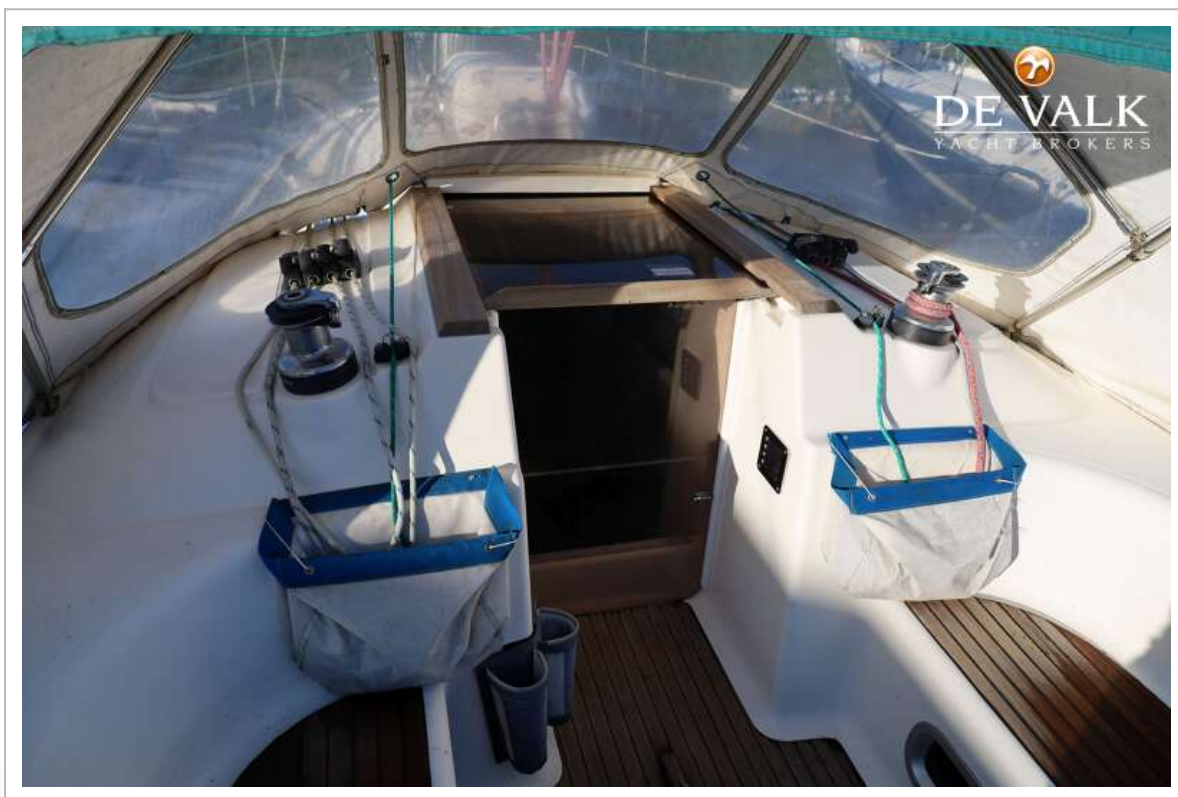




# BAVARIA 36 HOLIDAY



# BAVARIA 36 HOLIDAY





# BAVARIA 36 HOLIDAY





# BAVARIA 36 HOLIDAY

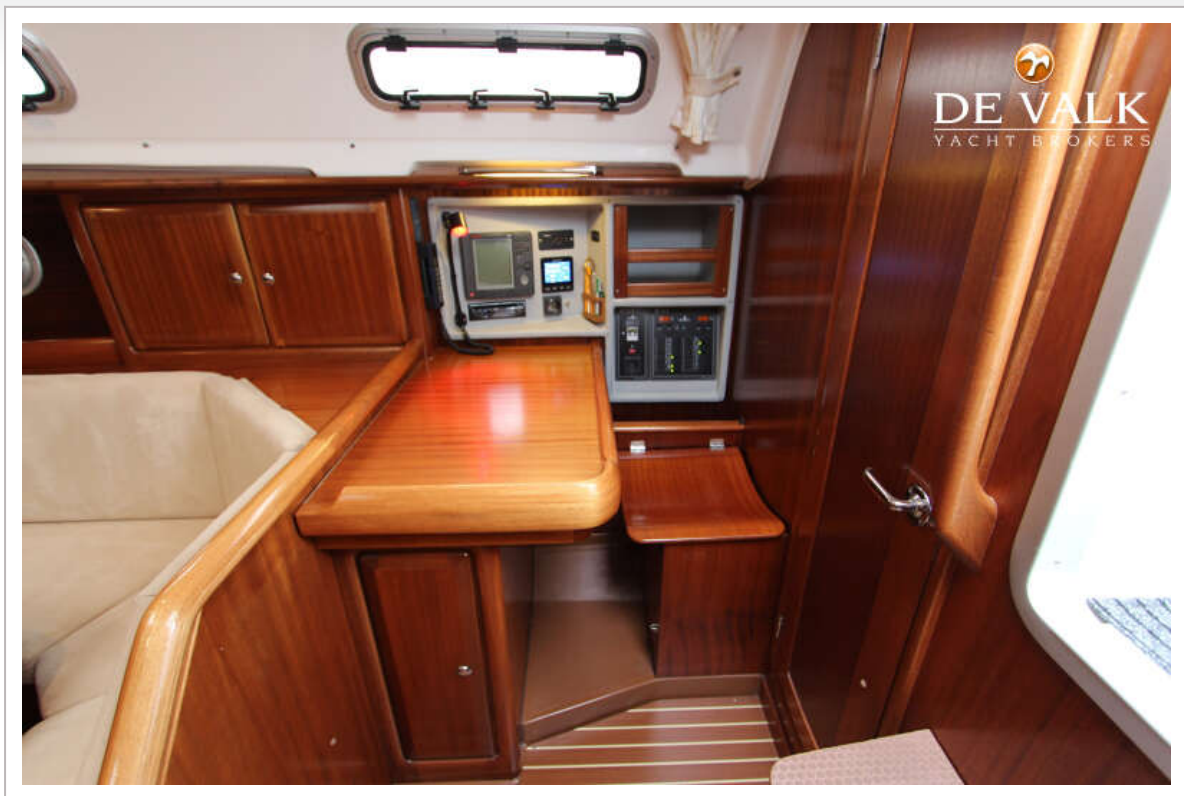


# BAVARIA 36 HOLIDAY





# BAVARIA 36 HOLIDAY

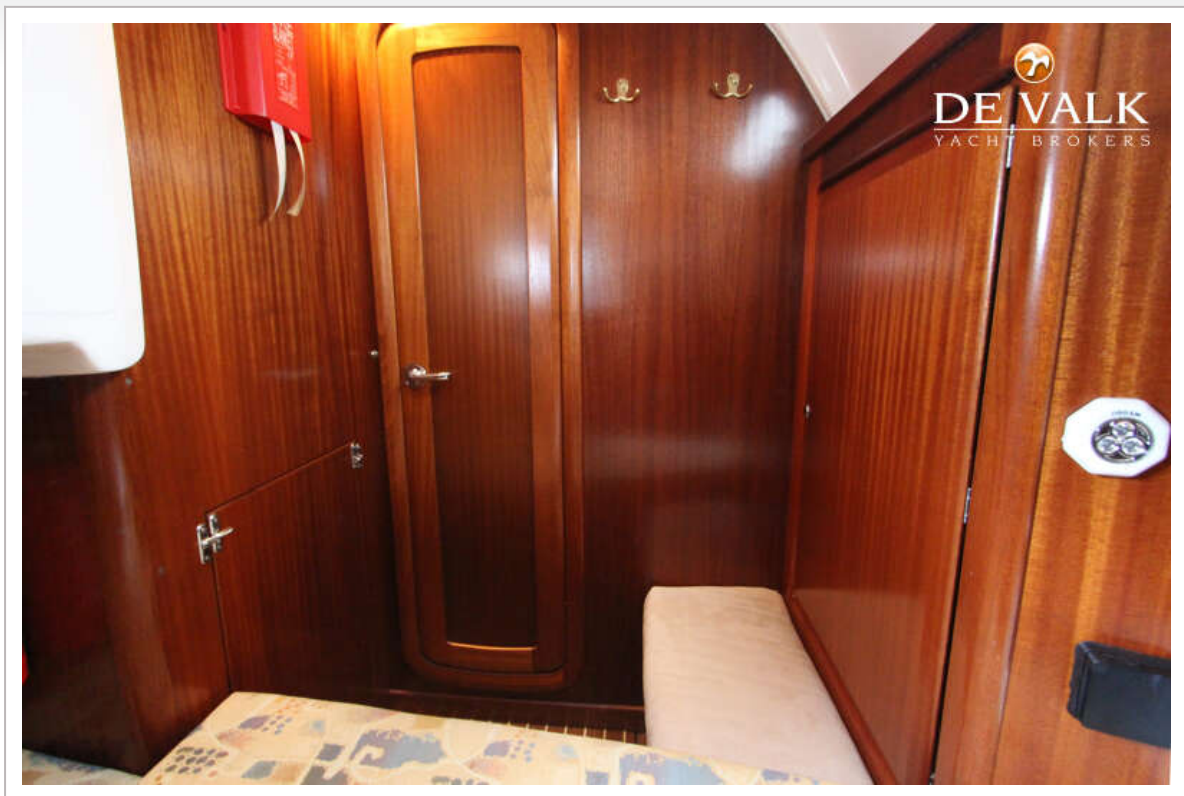


# BAVARIA 36 HOLIDAY





# BAVARIA 36 HOLIDAY



# BAVARIA 36 HOLIDAY













# BAVARIA 36 HOLIDAY





