



DE VALK
YACHT BROKERS



HOLTERMAN 53



DE VALK
YACHT BROKERS

BROKER'S COMMENTS

Holterman 53 from 2009, a beautiful motor yacht built by Holterman Yachting and designed by Vripack. A seaworthy motor yacht built under the CE: A class and equipped with hydraulic stabilisers, the Holterman 53 is extremely suitable for long international voyages, especially considering that this motor yacht has everything on board to make a long stay on board very comfortable.

Henk de Vries

SPECIFICATIONS

Dimensions	16.20 x 4.90 x 1.40 (m)	Builder	Holterman Yachting
Built	2009	Cabins	2
Material	Steel	Berths	4
Engine(s)	2 x John Deere 6068TFM75 diesel	Hp/Kw	2 x 201.00 (hp), 147.94 (kw)
Asking price	sold (VAT)	Lying	

CONTACT

Sales office	De Valk Sneek	Telephone	+31 (0)515 42 80 30
Address	Zwolsmanweg 7 8606 KC Sneek NL	E-mail	sneek@devalk.nl

DISCLAIMER

These particulars are given in good faith as supplied but cannot be guaranteed.



GENERAL

Model	HOLTERMAN 53
Type	motor yacht
LOA (m)	16,20
Beam (m)	4,90
Draft (m)	1,40
Air draft (m)	5,90
Air draft min (m)	4,36
Headroom (m)	2,00
Year built	2009
Builder	Holterman Yachting
Country	The Netherlands
Designer	Vripack Yacht Design Sneek
Displacement (t)	32
CE norm	A
Hull material	steel
Hull colour	silver gray
Hull thickness (mm)	5
Hull shape	Fast Displacement Hull
Superstructure material	steel
Superstructure (mm)	4
Deck plate thickness (mm)	4
Rubbing strake	stainless steel
Deck material	steel
Deck finish	teak
Superstructure deck finish	paint
Cockpit deck finish	teak
Antifouling (year)	2021
Dorades	yes
Window frame	aluminium
Window material	tempered glass Double glazing



Deckhatch	yes
Portholes	aluminium
Insulation	glasswool
Mast can be lowered	hydraulic
Fuel tank (litre)	steel 2 x 650 / 1 x 1.700
Level indicator (fuel tank)	yes
Freshwater tank (litre)	stainless steel 2.000 double water filter system
Level indicator (freshwater)	yes
Blackwater tank (litre)	stainless steel 350
Level indicator (blackwater)	yes
Blackwater tank extraction	deck extraction + pump
Greywater tank (litre)	stainless steel 350
Level indicator (greywater)	yes
Wheel steering	hydraulic Holland Nautic Active Steering
Inside helm position	With remote control RMC
Outside helm position	RMC remote control
More info on paintwork	Painted in 2018
Extra info	Sun screens (2022)

ACCOMMODATION

Cabins	2
Berths	4
Interior	cherry
Floor	wood
Open cockpit	yes
Aft deck	yes
Pilot house/deck saloon	yes
Saloon	yes
Headroom saloon (m)	1,95
Sliding roof	electric Glass, with sun screen
Heating	central heating Kabola



Air-conditioning	single cycle airco Webasto
Dinette	yes
Opening door to cockpit	yes
Opening door to aft deck	yes
Galley	yes
Countertop	granite
Sink	stainless steel
Cooker	ceramic Miele
Microwave/oven combi	Miele
Fridge	2 x fridge 2 x drawer
Freezer	yes
Hot water system	220V + engine
Water pressure system	electrical
Dishwasher	Miele
Owners cabin	French bed
Bed length (m)	2,0 x 1,60
Wardrobe	hanging/drawers/shelves
Bathroom	en suite
Toilet	en suite
Toilet system	electric
Wash basin	in the bathroom
Shower	en suite
Guest cabin 1	v-bed
Bed length (m)	2,10 x 0,90
Wardrobe	drawers
Bathroom	en suite
Toilet	shared
Toilet system	electric
Wash basin	in the bathroom
Shower	separate
Washing machine/dryer combi	Miele
Central vacuum cleaner	yes



Extra info

Saloon table in height adjustable

MACHINERY

No of engines	2
Make	John Deere
Type	6068TFM75
HP	201
kW	147.94
Fuel	diesel
Year installed	2009
Maximum speed (kn)	10,5
Cruising speed (kn)	8
Engine hours	2750
Engine cooling system	freshwater heat exchanger
Drive	shaft
Engine controls	electrical EMC
Gearbox	hydraulic
Bowthruster	hydraulic With remote control
Sternthruster	hydraulic With remote control
Exhaust	watercooled
Thrust bearing	yes
Propeller type	fixed
Propeller blades	4
Propeller shaft material	stainless steel
Shaft lubrication	water Axiseals
Manual bilge pump	yes
Electric bilge pump	yes
Bilge alarm	yes
Electrical installation	12V / 24V / 230V
Generator	silent separator Whisper Ultra 12kW
Batteries	yes



Start battery	yes
Service battery	yes
Generator battery	yes
Battery monitor	Mastervolt
Battery charger	3x Mastervolt: 2x 100Ah24V 1x 10Ah12V
Inverter	Mastervolt 5kW
Diode battery combiners	yes
Shorepower	with cable
Insulation transformer	Mastervolt 3,5 KVa
Stabilizers	fin Vetus Hydraulic
Extra info	2x extra 24V alternators

NAVIGATION

Electric compass	Raymarine
Depth sounder	Raymarine ST60
Log	Raymarine ST60
Windset	RTaymarine ST60
VHF	yes
VHF handheld	yes
Autopilot	Raymarine ST6002
Rudder angle indicator	Raymarine
Radar/GPS/plotter	Raymarine Axiom Pro 16 inch RVX (2022)
AIS transceiver	yes
Camera	yes
Navigation lights	LED
Searchlight	ITT Jabsco with remote control

EQUIPMENT

Fixed windscreen	yes
Dodger	yes
Bimini	yes



Cockpit cushions	yes
Cockpit table	yes
Cockpit chairs	yes
Bathing platform	yes
Boarding ladder	stainless steel
Transom door	yes
Bow ladder	And side ladder
Anchor	Pool
Anchor chain	yes
Windlass	electrical With remote control
Deck wash	yes
Sea railing	stainless steel
Grab rail (superstructure)	stainless steel
Railing side opening gates	yes
Pulpit	With a folding stainless steel seat
Wiper	3 x
Horn	yes
Fenders	yes
Mooring lines	yes
TV	2 x flatscreen
TV receiver	yes
Radio-cd player	yes
Surround Sound System	yes
Speakers in salon	yes
Clock - barometer	yes
Fire extinguisher	3x
Auto extinguisher system	In engine room



HOLTERMAN 53



HOLTERMAN 53



HOLTERMAN 53



HOLTERMAN 53



HOLTERMAN 53



HOLTERMAN 53



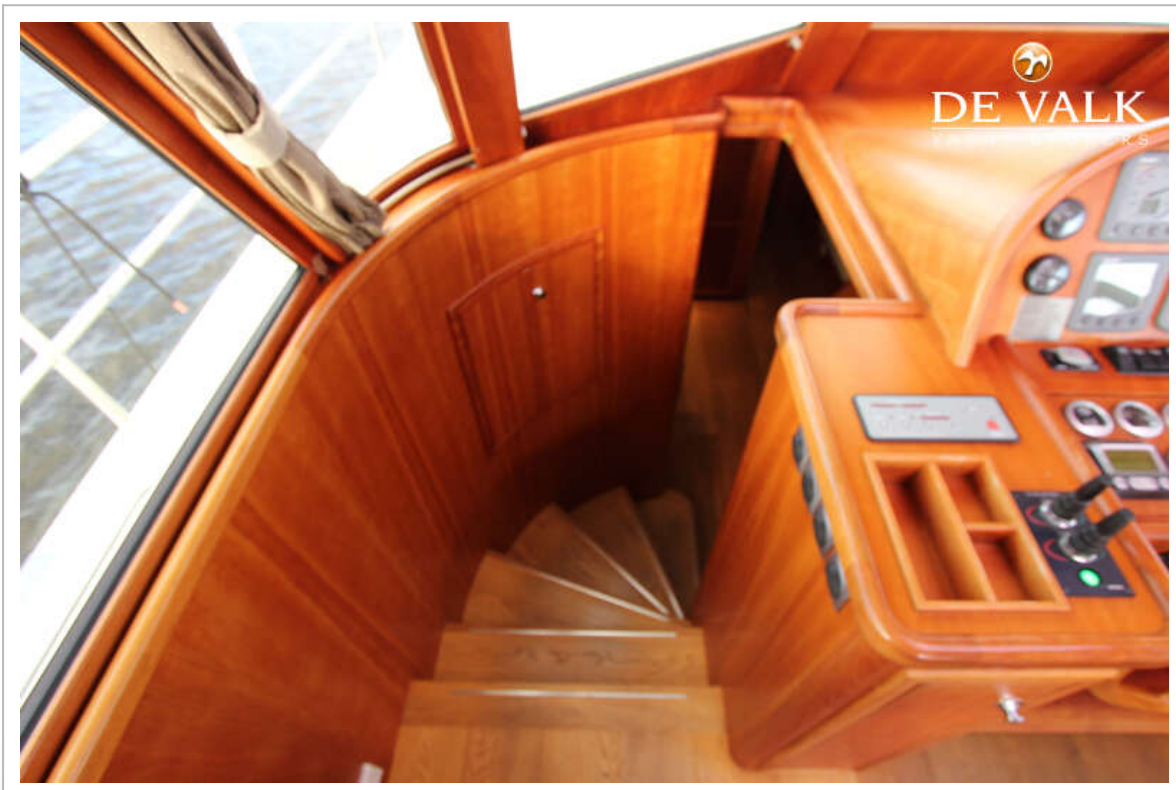
HOLTERMAN 53



HOLTERMAN 53



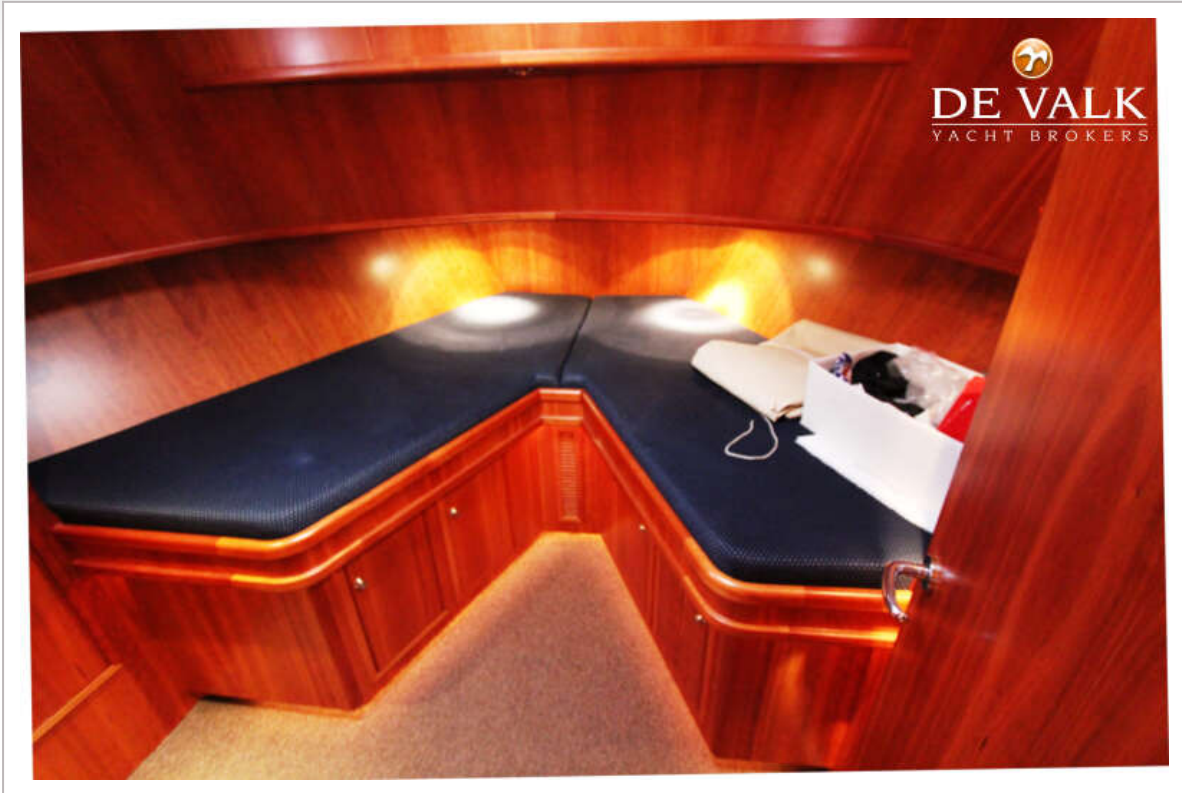
HOLTERMAN 53

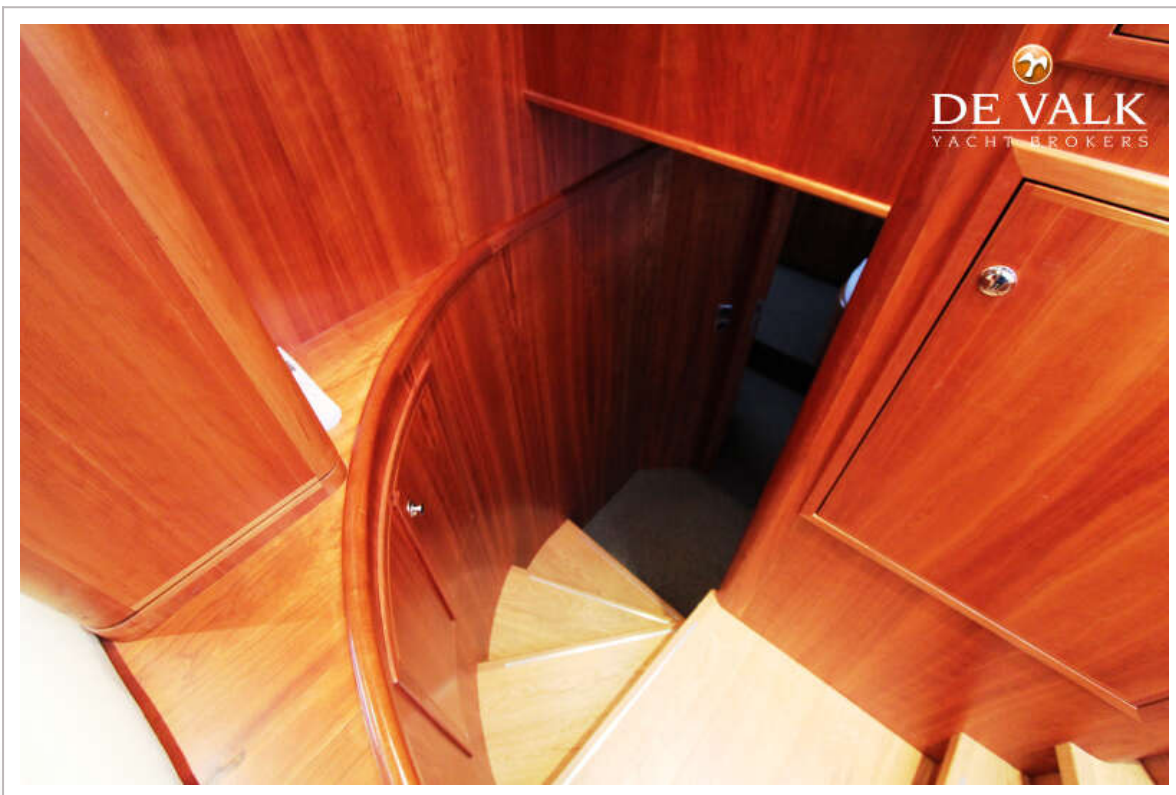


HOLTERMAN 53



HOLTERMAN 53





HOLTERMAN 53



HOLTERMAN 53

