



AMEL SUPER MARAMU 53



AMEL SUPER MARAMU 53

BROKER'S COMMENTS

The Amel Super Maramu 53 represents the epitome of outstanding craftsmanship and thoughtful design in the world of sailing yachts. With its impressive length of 53 feet, this yacht exudes pure class with its distinctive design, harmoniously blending form and function. With its powerful performance and ability to be sailed even with a small crew, the Super Maramu 53 makes a favourite among experienced sailors looking for both comfort and outstanding sailing characteristics.

Johan Schootstra

SPECIFICATIONS

Dimensions	15.98 x 4.60 x 2.05 (m)	Builder	Chantiers Amel
Built	1995	Cabins	2
Material	GRP	Berths	8
Engine(s)	1 x Volvo Penta TMD 22A diesel	Hp/Kw	80.00 (hp), 58.88 (kw)
Asking price	sold (VAT)	Lying	elsewhere / Not at sales office

CONTACT

Sales office	De Valk Hindeloopen B.V.	Telephone	+31 514 52 40 00
Address	Oosterstrand 1 8713 JS Hindeloopen NL	E-mail	hindeloopen@devalk.nl

DISCLAIMER

These particulars are given in good faith as supplied but cannot be guaranteed.



GENERAL

Model	AMEL SUPER MARAMU 53
Type	sailing yacht
LOA (m)	15,98
LWL (m)	12,60
Beam (m)	4,60
Draft (m)	2,05
Air draft (m)	20,00
Headroom (m)	2,00
Year built	1995
Builder	Chantiers Amel
Country	France
Designer	Henri Amel & J. Carteau
Displacement (t)	16
Ballast (tonnes)	lead 5,5 t
Hull material	GRP
Hull colour	white
Hull shape	round-bilged
Keel type	Fin keel with bulb section and side wings
Superstructure material	GRP
Rubbing strake	plastic
Deck material	GRP
Deck finish	synthetic teak
Superstructure deck finish	non-skid moulded in
Cockpit deck finish	synthetic teak
Window frame	stainless steel
Window material	tempered glass
Deckhatch	3x
Fuel tank (litre)	600 ltr.
Level indicator (fuel tank)	Dipstick on a cord on the filler cap
Freshwater tank (litre)	polyethylene 1000 ltr.



Level indicator (freshwater)	dipstick at entrance
Blackwater tank extraction	deck extraction + uw line 1x forward toilet
Wheel steering	mechanical
Emergency tiller	yes

ACCOMMODATION

Cabins	2
Berths	8
Interior	mahogany
Floor	wood + carpet
Aft deck	yes
Pilot house	yes
Saloon	yes
Headroom saloon (m)	2 mtr.
Heating	central heating Eberspächer
Heating 2	electric 220V
Navigation center	yes
Chart table	yes
Aft Cabin	yes
Dinette	yes
Convertible berth	yes
Galley	yes
Countertop	tiles + Polyethylene
Sink	Polyethylene
Cooker	calor gas Eno 2 burner
Oven	In cooker
Microwave	yes
Fridge	Vitrifigo 118 ltr. with freezer compartment
Freezer	24v deep freezer in the saloon
Hot water system	220V/engine/heating Quick Sigmar Marine
Water pressure system	electrical



Dishwasher	Medion
Owners cabin	double bed aft cabin
Bed length (m)	1,90 mtr.
Wardrobe	hanging/drawers/shelves
Bathroom	en suite
Toilet	Jabsco
Toilet system	manual
Wash basin	yes
Shower	yes
Guest cabin 1	twin single forward cabin
Bed length (m)	1,90 mtr
Wardrobe	hanging and shelves
Bathroom	en suite
Toilet	Jabsco
Toilet system	manual
Wash basin	yes
Shower	yes
Extra info	Extra berth in walk-through to aft cabin and extendable berth in saloon
Washing machine	Goldkind EU340

MACHINERY

No of engines	1
Make	Volvo Penta
Type	TMD 22A
HP	80
kW	58.88
Fuel	diesel
Year installed	1995
Maximum speed (kn)	7,5
Cruising speed (kn)	6,5



Engine cooling system	freshwater heat exchanger
Engine controls	bowden cable
Gearbox	mechanical
Bowthruster	electric
Exhaust	watercooled
Propeller type	folding
Propeller blades	3
Manual bilge pump	yes
Electric bilge pump	yes
Electrical installation	24 / 220V
Generator	Onan 6.5 Marine
Start battery	12v 100amp
Service battery	24v 400amp
Battery charger	CTEK mxt14 + Tecpro 24V - 50A
Inverter	Victron Energie Atlas 24V - 2500 Watt
Shorepower	with cable

NAVIGATION

Compass	Plastimo
Multi control display	Raymarine I70s
Depth sounder	Clipper DEPTH and Raymarine
Forw. looking depth sounder	EchoPilot
Log	Clipper LOG
Windset	2x Clipper WIND and Raymarine
VHF	Shipmate 8400 & Navman VHF7100
Autopilot	Raymarine and Autohelm
Rudder angle indicator	On autopilot
Radar	Furuno
GPS	Furuno GP-32
Plotter/GPS	Raymarine E140 W
Navtex	Furuno NX-300



AIS transceiver
Navigation lights

Raymarine
yes

EQUIPMENT

Fixed hardtop
Cockpit cover
Cockpit table
Bathing platform
Boarding ladder
Deck shower
Anchor
Anchor chain
Anchor 2
Chain counter
Windlass
Capstan
Outboard support
Sea railing
Grab rail (superstructure)
Pushpit
Pulpit
Radar reflector
Fenders
Mooring lines
TV
TV receiver
Radio-cd player
Speakers in salon
Clock - barometer

yes
yes
One small | one big
yes
yes
yes
CQR Plough
yes
CQR Plough
yes
electrical | Lofrans
yes
yes
yes
stainless steel
yes
yes
yes
yes
yes
2x
Digitenne
Jvc
yes
yes

RIGGING



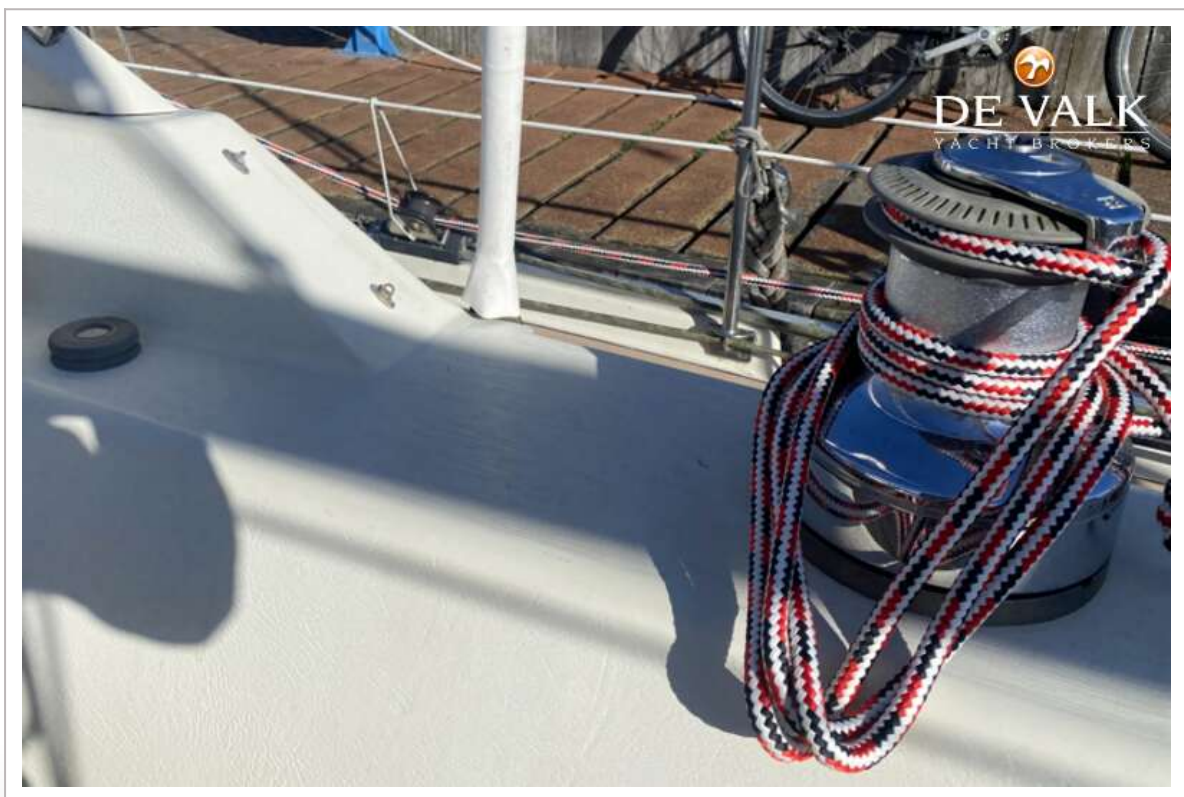
Rigging	ketch
Standing rigging	wire
Material mast	aluminium coated
Spreaders	yes
Mainsail	United Baltic - Bryt Sails in mast furling electric
Stoway mast	yes
Mizzen	United Baltic - Bryt Sails in mast furling
Genoa	United Baltic - Bryt Sails
Genoa furler	Electric
Gennaker	yes
Reefing System	main in-mast furling Electric
Backstay adjuster	yes
Primary sheet winch	1x Lewmar 40 Electric
Secondary sheet winch	2x Lewmar 40
Genoa sheetwinches	2x Lewmar 58 Electric
Halyard winches	2x Lewmar 44 and 4x Lewmar 16 on masts
Reefing winch	Andersen Line Tender
Spi-pole	aluminium 2x
Extra info	Double Amel downwind pole system



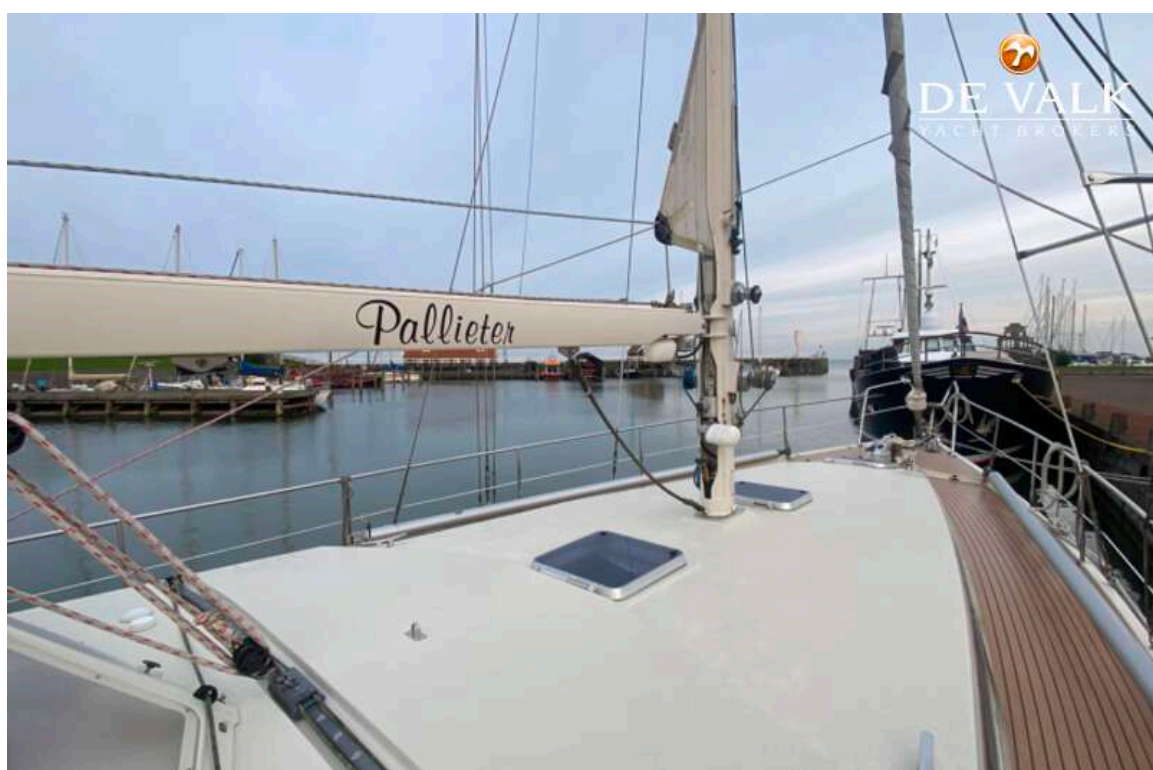
AMEL SUPER MARAMU 53



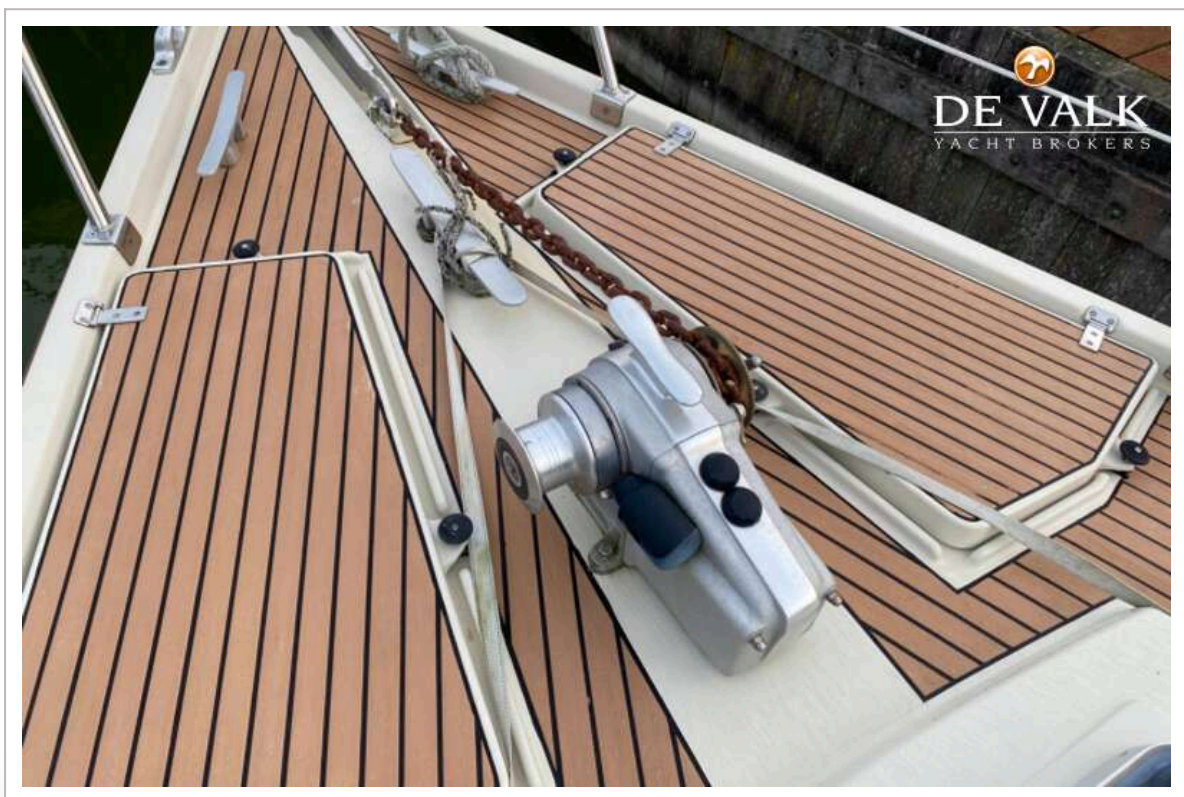
AMEL SUPER MARAMU 53



AMEL SUPER MARAMU 53



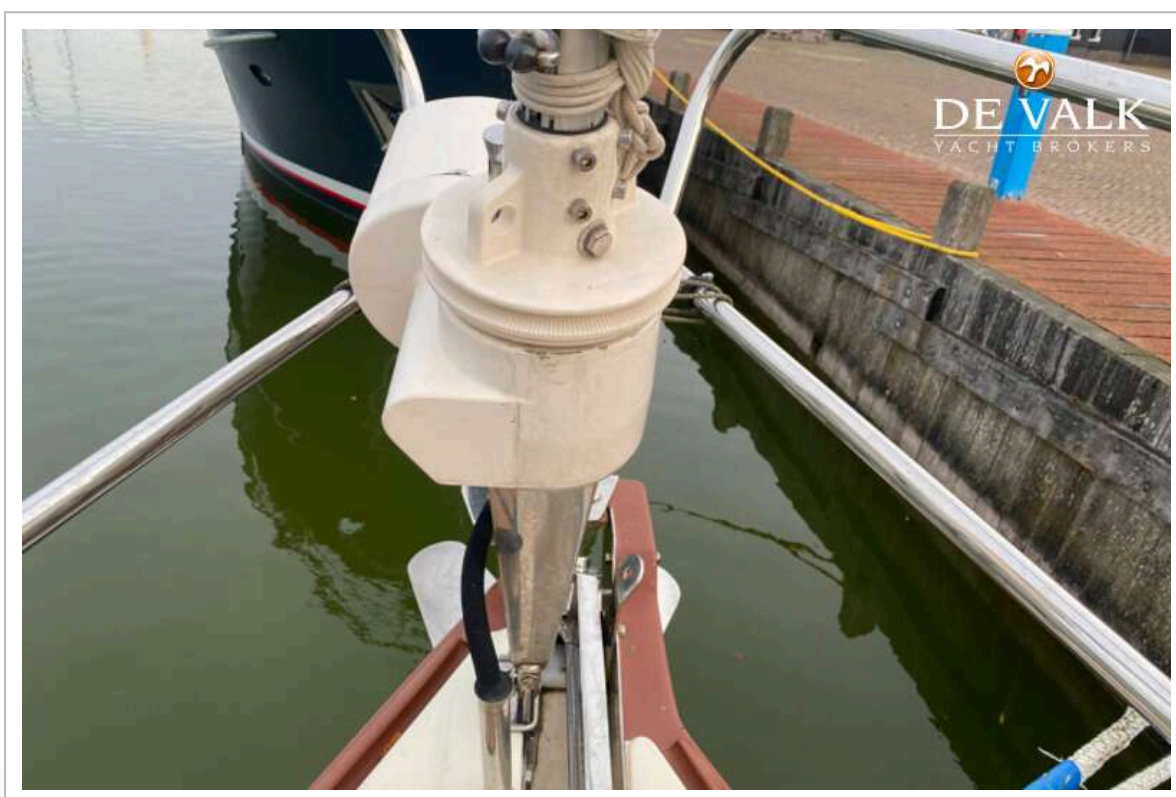
AMEL SUPER MARAMU 53



AMEL SUPER MARAMU 53



AMEL SUPER MARAMU 53



AMEL SUPER MARAMU 53



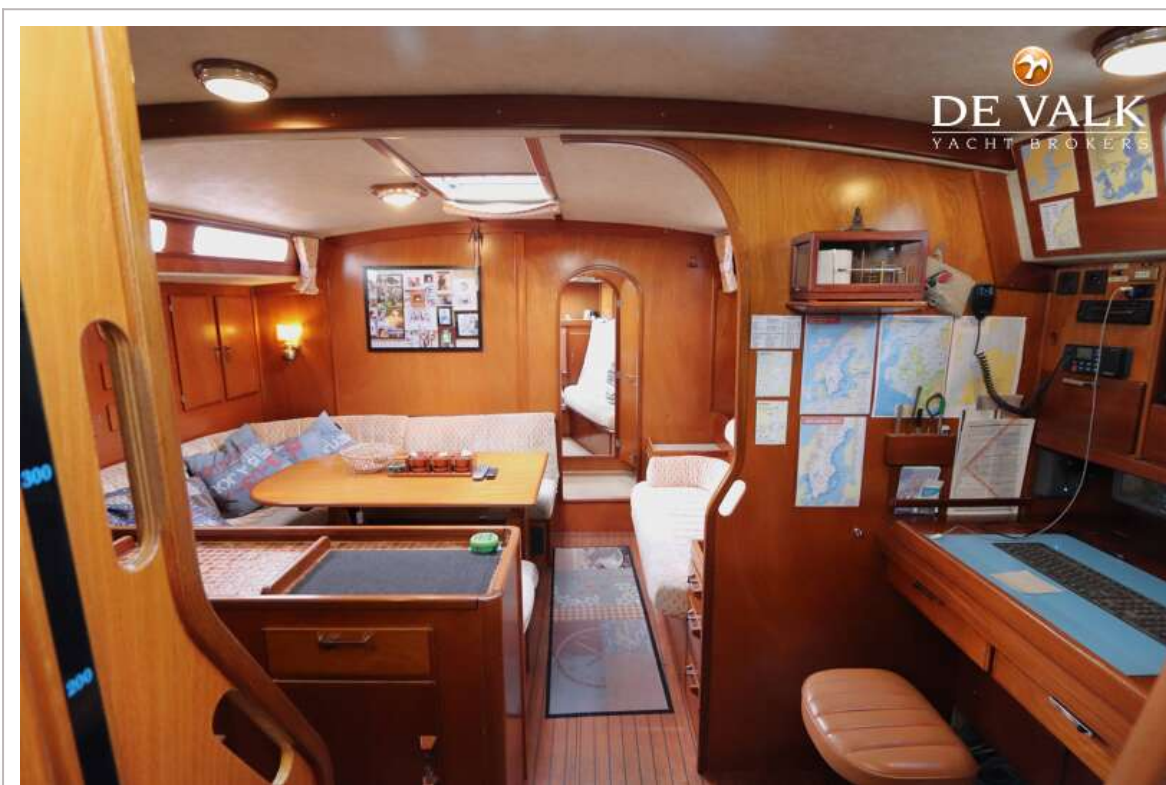
AMEL SUPER MARAMU 53



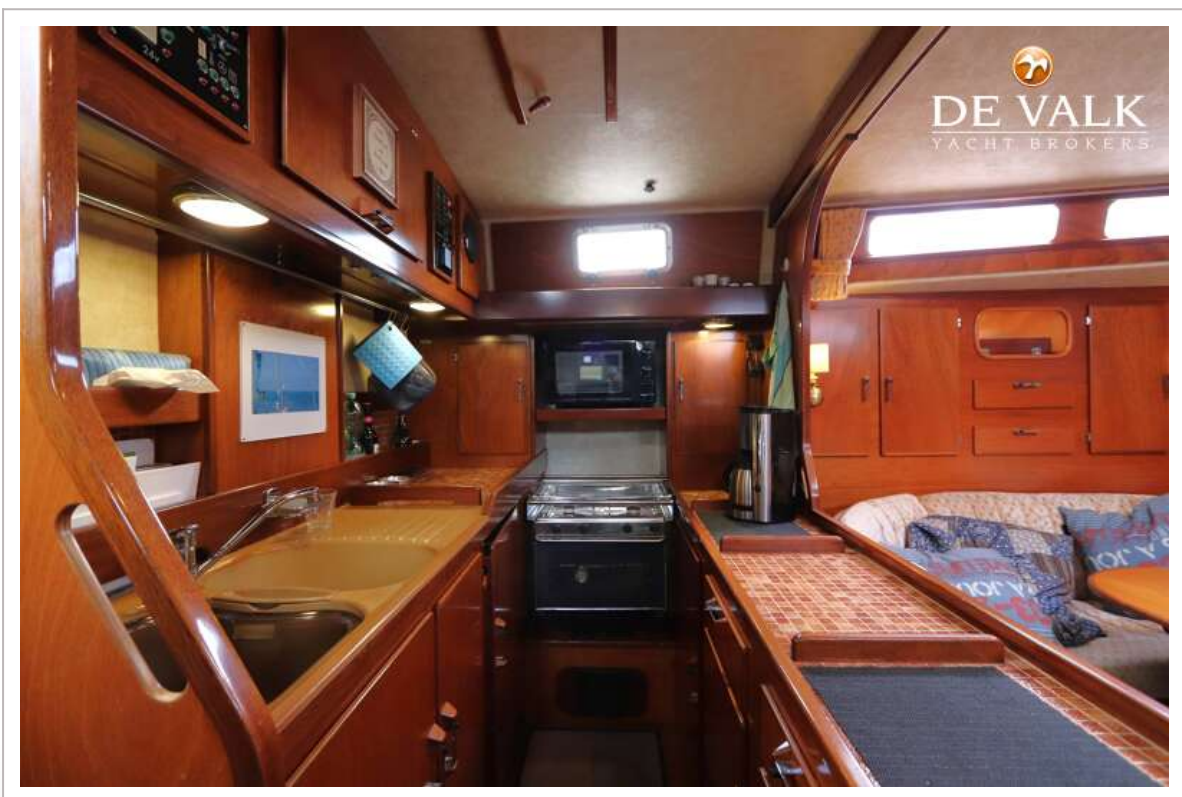
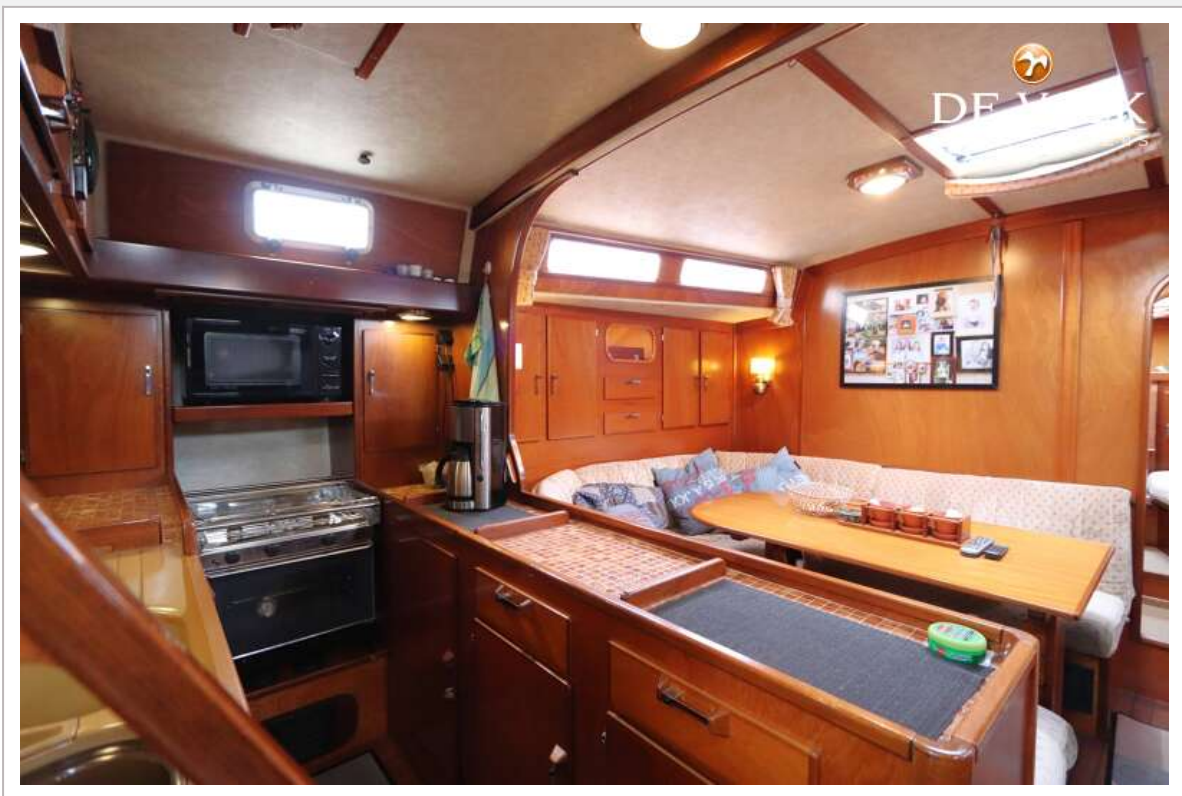
AMEL SUPER MARAMU 53



AMEL SUPER MARAMU 53



AMEL SUPER MARAMU 53



AMEL SUPER MARAMU 53



AMEL SUPER MARAMU 53



AMEL SUPER MARAMU 53



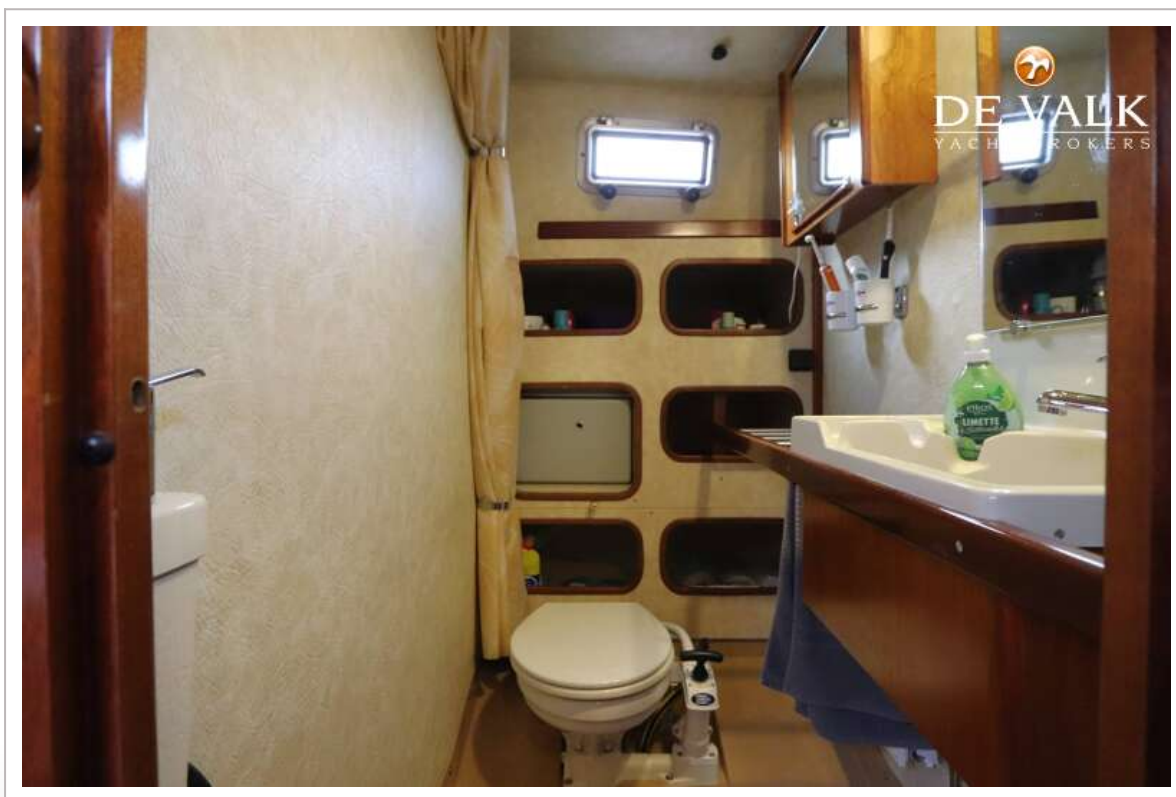
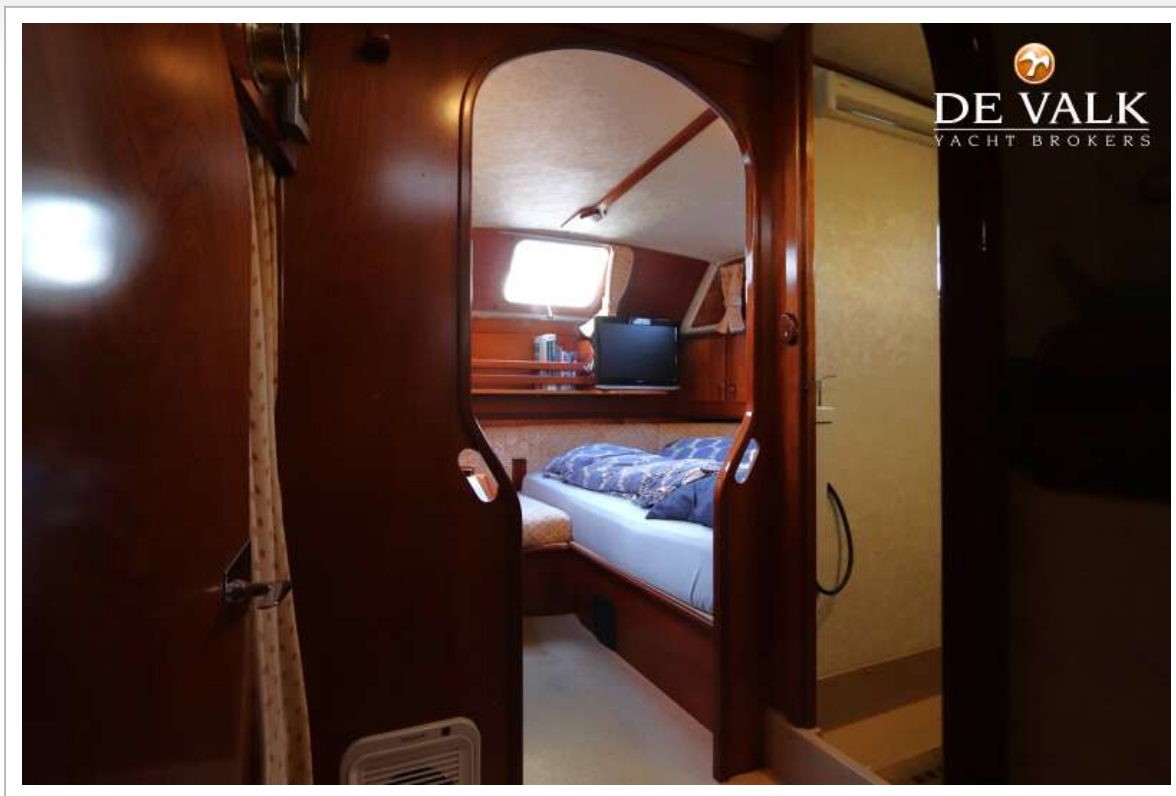
AMEL SUPER MARAMU 53



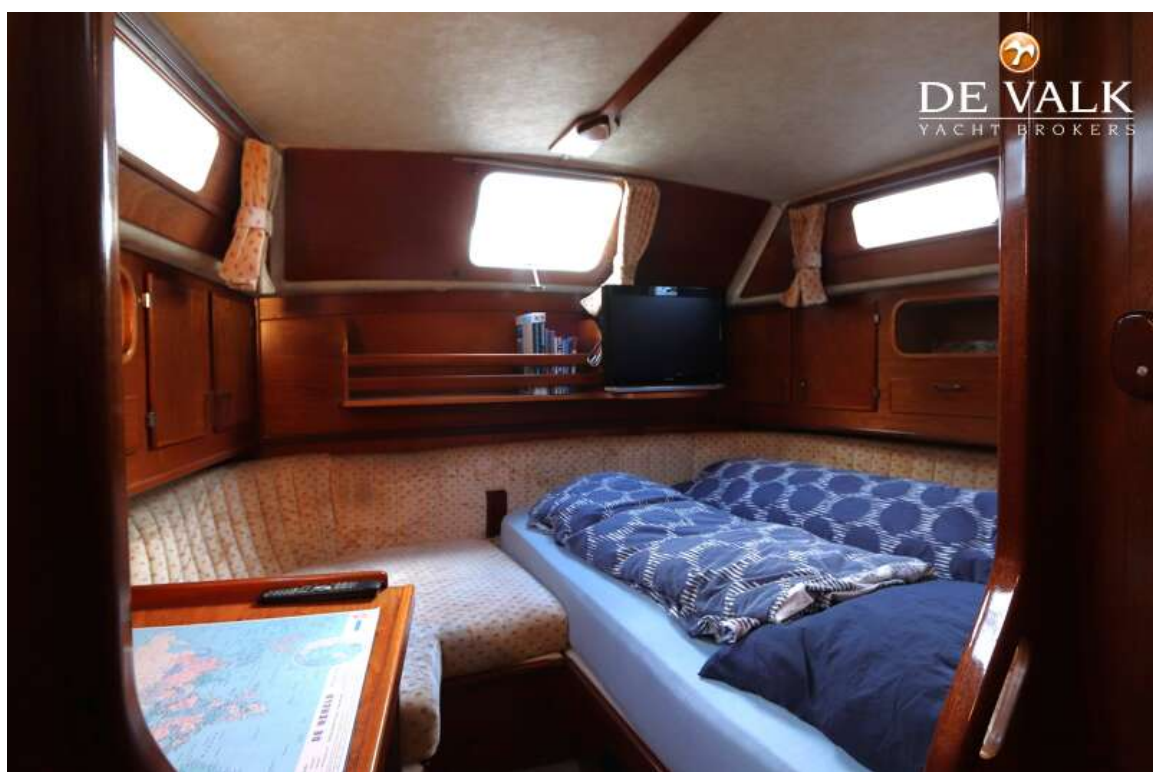
AMEL SUPER MARAMU 53



AMEL SUPER MARAMU 53



AMEL SUPER MARAMU 53



AMEL SUPER MARAMU 53

