



DE VALK  
YACHT BROKERS



NICHOLSON 40 AC



DE VALK  
YACHT BROKERS

BROKERAGE | CHARTER | BERTHS | FINANCE | INSURANCE | YACHT MANAGEMENT

# NICHOLSON 40 AC

## BROKER'S COMMENTS

Nicholson 40 AC "Raffles" is hull number 3 of 20 of these well known S bilge full skeg heavy displacement sailing yachts ever built. The Nicholson 40 AC provides rare and wonderful opportunity to purchase a very stylish yacht that has been exceptionally well built for serious blue water cruiser providing a comfortable accommodation for 6 people. appreciate!

*Hans Visser*

## SPECIFICATIONS

<b>Dimensions</b>	12.19 x 3.51 x 1.75 (m)	<b>Builder</b>	CAMPER & NICHOLSON LTD.
<b>Built</b>	1979	<b>Cabins</b>	2
<b>Material</b>	GRP	<b>Berths</b>	7
<b>Engine(s)</b>	1 x Perkins Prima M50 diesel	<b>Hp/Kw</b>	58.00 (hp), 42.69 (kw)
<b>Asking price</b>	€ 59.000 (VAT Paid)	<b>Lying</b>	at sales office

## CONTACT

<b>Sales office</b>	De Valk Hindeloopen B.V.	<b>Telephone</b>	+31 514 52 40 00
<b>Address</b>	Oosterstrand 1 8713 JS Hindeloopen NL	<b>E-mail</b>	hindeloopen@devalk.nl

## DISCLAIMER

These particulars are given in good faith as supplied but cannot be guaranteed.



# NICHOLSON 40 AC

## GENERAL

Model	NICHOLSON 40 AC
Type	sailing yacht
LOA (m)	12,19
Beam (m)	3,51
Draft (m)	1,75
Headroom (m)	1,90
Year built	1979
Builder	CAMPER & NICHOLSON LTD.
Country	United Kingdom
Designer	Camper & Nicholson
Displacement (t)	11
CE norm	NA
Hull material	GRP
Hull colour	Light blue
Hull shape	S-bilged
Keel type	fin keel
Superstructure material	GRP
Deck material	GRP
Deck finish	non-skid paint
Superstructure deck finish	non-skid paint
Cockpit deck finish	teak
Dorades	4x Vetus dorades
Window frame	stainless steel
Window material	tempered glass
Deckhatch	6x
Portholes	aluminium 1x
Fuel tank (litre)	steel Approx. 246 ltr.
Freshwater tank (litre)	steel Approx. 322 ltr.
Wheel steering	chain steering
Outside helm position	Stainless steel wheel



## ACCOMMODATION

Cabins	2
Berths	7
Interior	mahogany
Layout	Classic
Floor	teak and holly
Open cockpit	yes
Saloon	yes
Headroom saloon (m)	1,90 mtr.
Navigation center	yes
Chart table	yes
Sliding door to cockpit	yes
Galley	yes
Countertop	wood   Pointed
Sink	stainless steel   Double
Cooker	calor gas Techimpex   3 burner   Cardanic
Oven	In cooker
Fridge	Danfoss
Hot water system	220V + engine
Water pressure system	electrical SPX-flow pump
Owners cabin	v-bed
Bed length (m)	1,87x1,95 mtr.
Wardrobe	hanging and drawers
Bathroom	shared
Toilet	shared
Toilet system	manual
Wash basin	in the bathroom
Guest cabin 1	double bed
Bed length (m)	1,90x1,20 mtr.
Wardrobe	hanging and drawers
Bathroom	shared



Toilet shared

## MACHINERY

No of engines	1
Make	Perkins
Type	Prima M50
HP	58
kW	42.69
Fuel	diesel
Year installed	1999
Maximum speed (kn)	7
Cruising speed (kn)	6
Engine hours	1994
Engine cooling system	freshwater heat exchanger
Drive	shaft
Shaft seal	yes
Engine controls	bowden cable
Gearbox	mechanical
Propeller shaft material	stainless steel
Shaft lubrication	grease
Manual bilge pump	yes
Electric bilge pump	yes
Electrical installation	12/230V
Batteries	3x
Start battery	Yuasa M31-100 100Ah 12V
Service battery	2x Yuasa YBX3663 112Ah 12V
Battery monitor	Renaud
Battery charger	Victron pallas 12/25 12V 25A
Shorepower	with cable

## NAVIGATION



Compass	Richie Compas
Depth sounder	Data on: Autohelm St 50 Depth lcd screen
Log	Data on: Autohelm St 50 Speed lcd screen
Windset	Data on: Autohelm St 50 Wind lcd screen
VHF	Shipmate RS 8300
Autopilot	Autohelm ST7000
GPS	Raymarine
Plotter	Raymarine C90W

## EQUIPMENT

Sprayhood	yes
Cockpit cushions	yes
Anchor	20,5 KG
Anchor chain	Galvanized steel
Windlass	electrical
Sea railing	wire
Grab rail (superstructure)	teak
Railing side opening gates	yes
Pushpit	Stainless steel
Pulpit	Stainless steel
Life raft	yes
Lifebuoy	2x Plastimo
Fenders	yes
Mooring lines	yes
Radio	Sony DSX530BTX
Cockpit speakers	2x JVC
Speakers in salon	Pioneer 3 way TS-E1799 150W

## RIGGING

Rigging	ketch-cutter
Standing rigging	wire



<b>Material mast</b>	aluminium
<b>Spreaders</b>	2 sets
<b>Keel stepped mast</b>	yes
<b>Mainsail</b>	2023 North sails
<b>Mainsail cover</b>	yes
<b>Fully battened mainsail</b>	yes
<b>Cutterstay</b>	yes
<b>Mizzen</b>	2022 North sails
<b>Mizzen sailcover</b>	yes
<b>Jib</b>	For cutterstay
<b>Genoa</b>	2019 North sails
<b>Genoa furler</b>	Harken Furler
<b>Booster</b>	yes
<b>Reefing System</b>	slabreefing
<b>Boomvang</b>	mechanical
<b>Genoa sheetwinches</b>	2x Lewmar 48 self tailing two speed
<b>Spinnaker winch</b>	1x Lewmar 40 two speed   2 x Lewmar 30 two speed self tailing
<b>Reefing winch</b>	1x Lewmar 8 one speed
<b>Multifunctional winches</b>	1x Lewmar 8 one speed   2x Lewmar 16 two speed self tailing
<b>Spi-pole</b>	aluminium



# NICHOLSON 40 AC





# NICHOLSON 40 AC



# NICHOLSON 40 AC



# NICHOLSON 40 AC

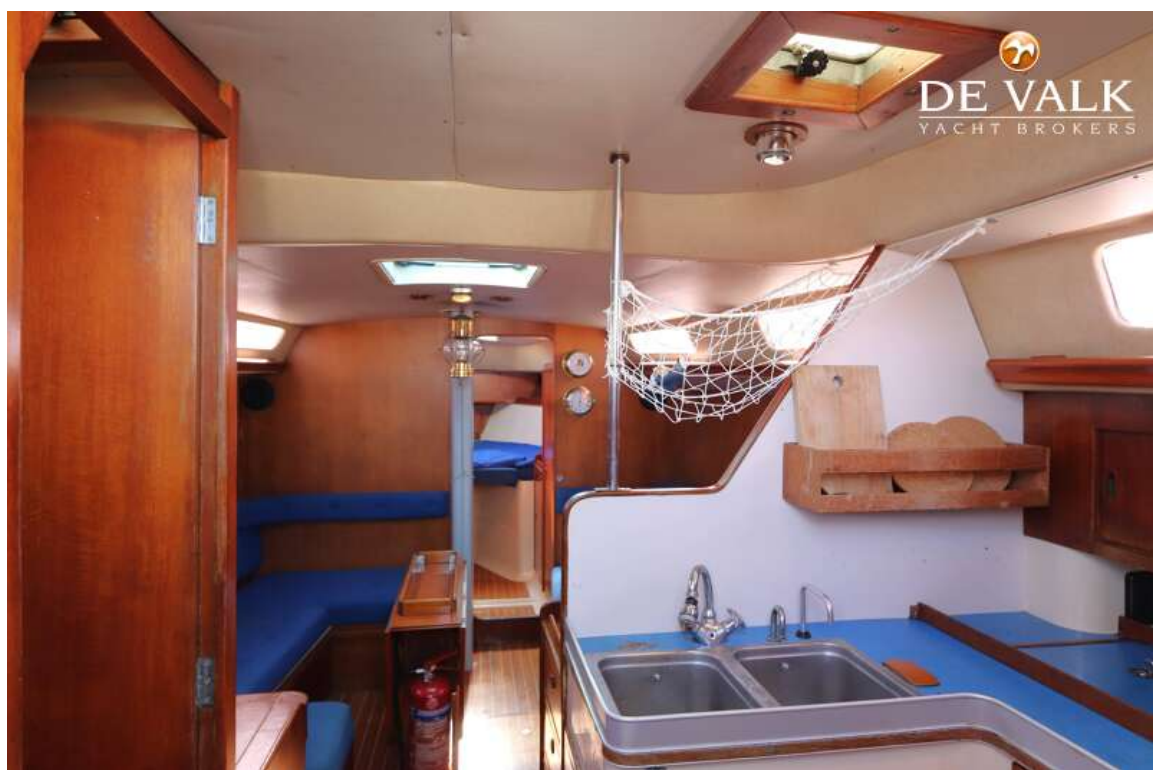




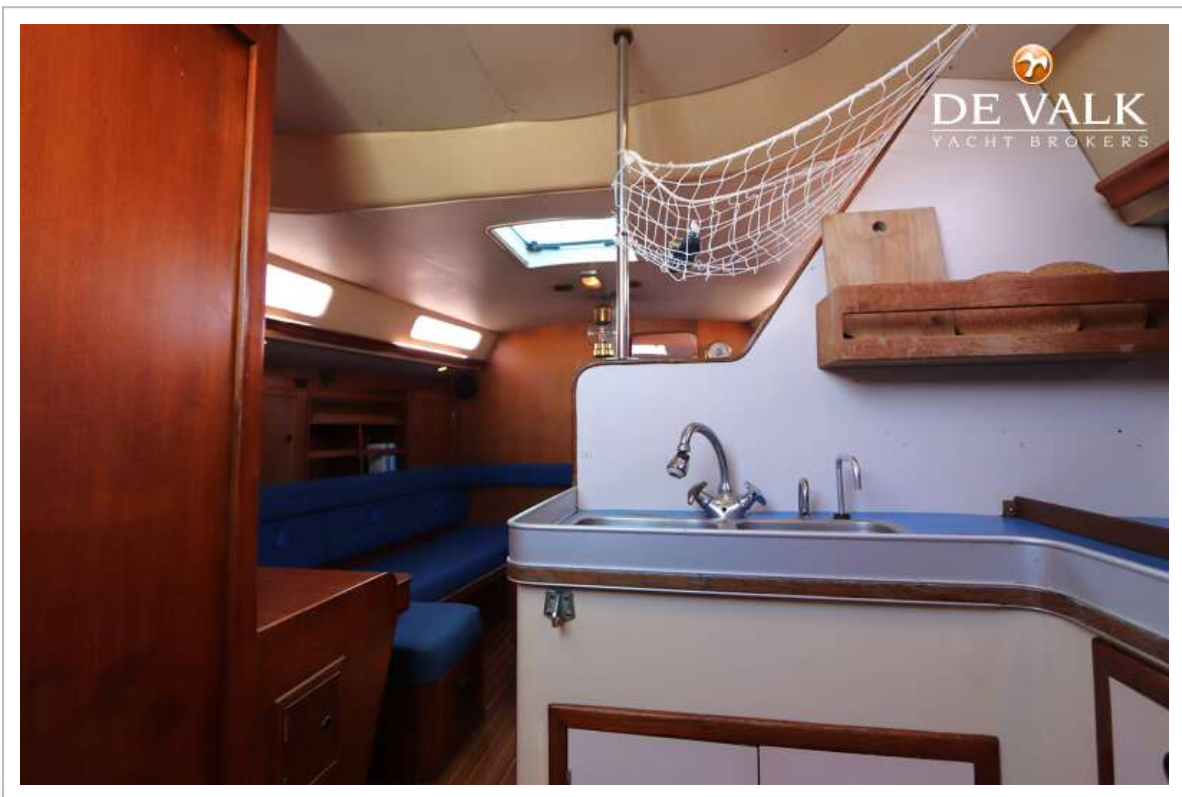
# NICHOLSON 40 AC



# NICHOLSON 40 AC



# NICHOLSON 40 AC

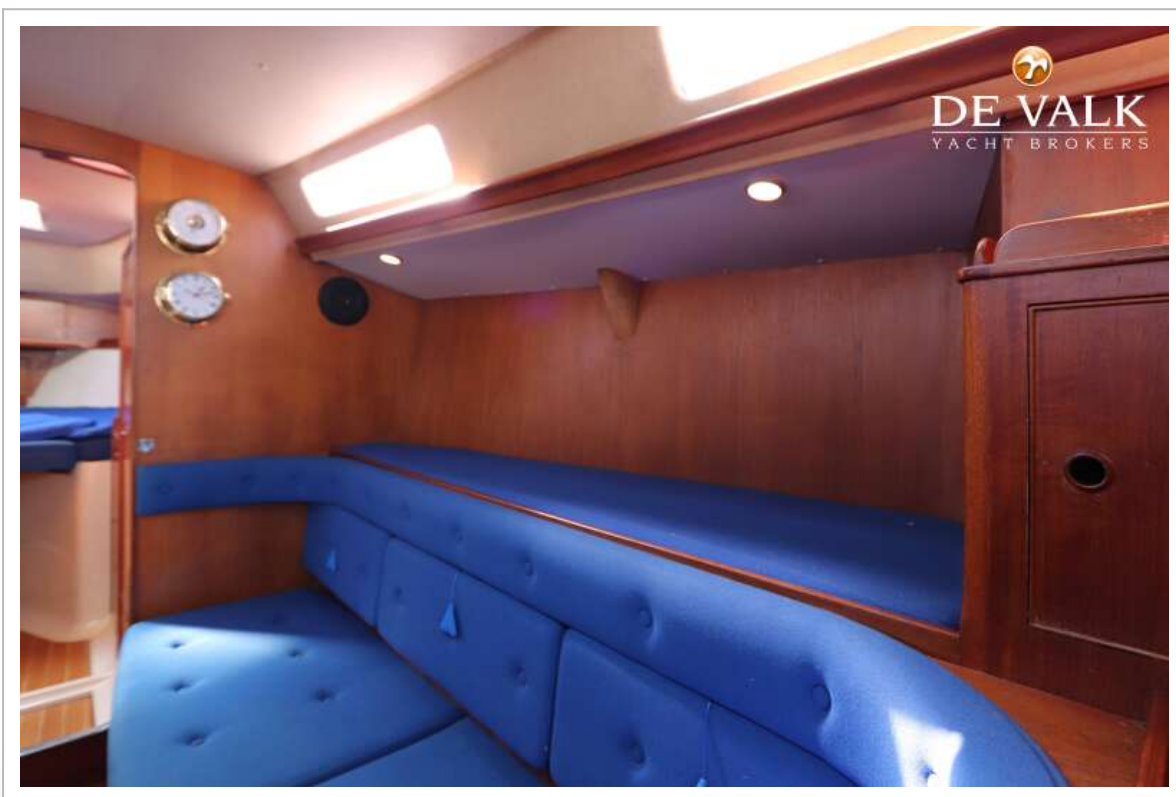
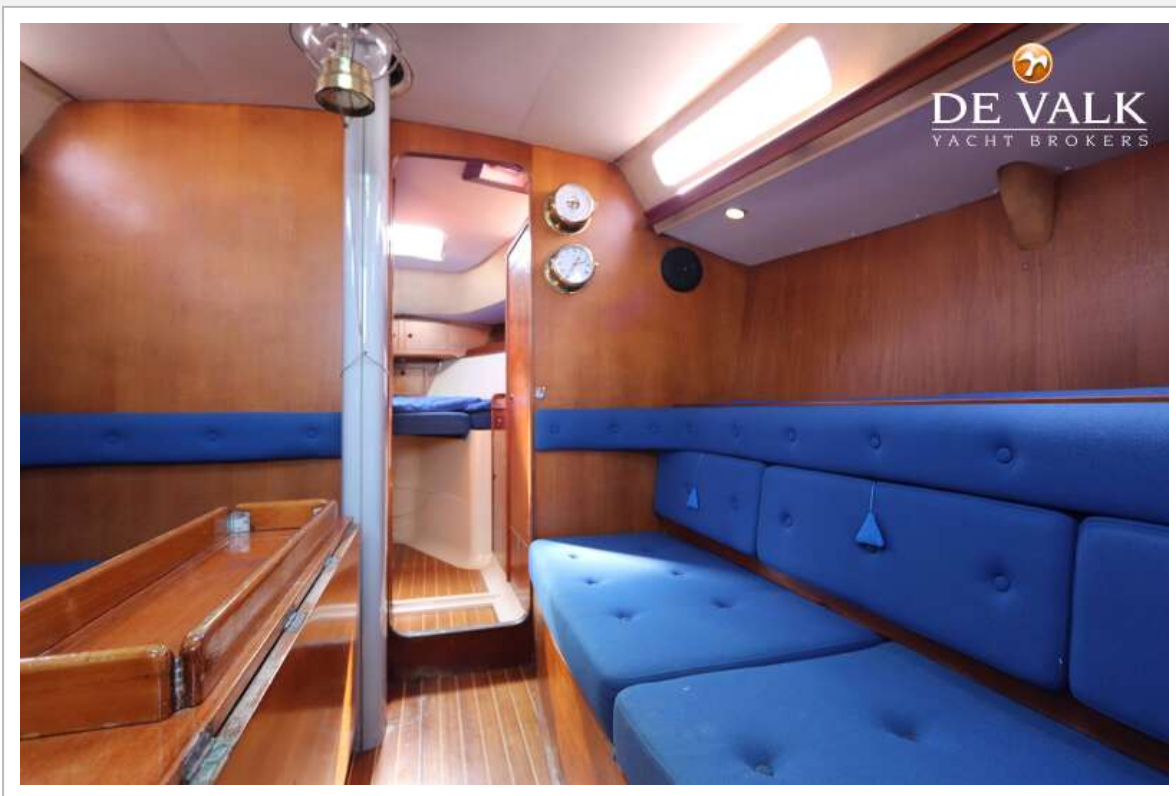




# NICHOLSON 40 AC

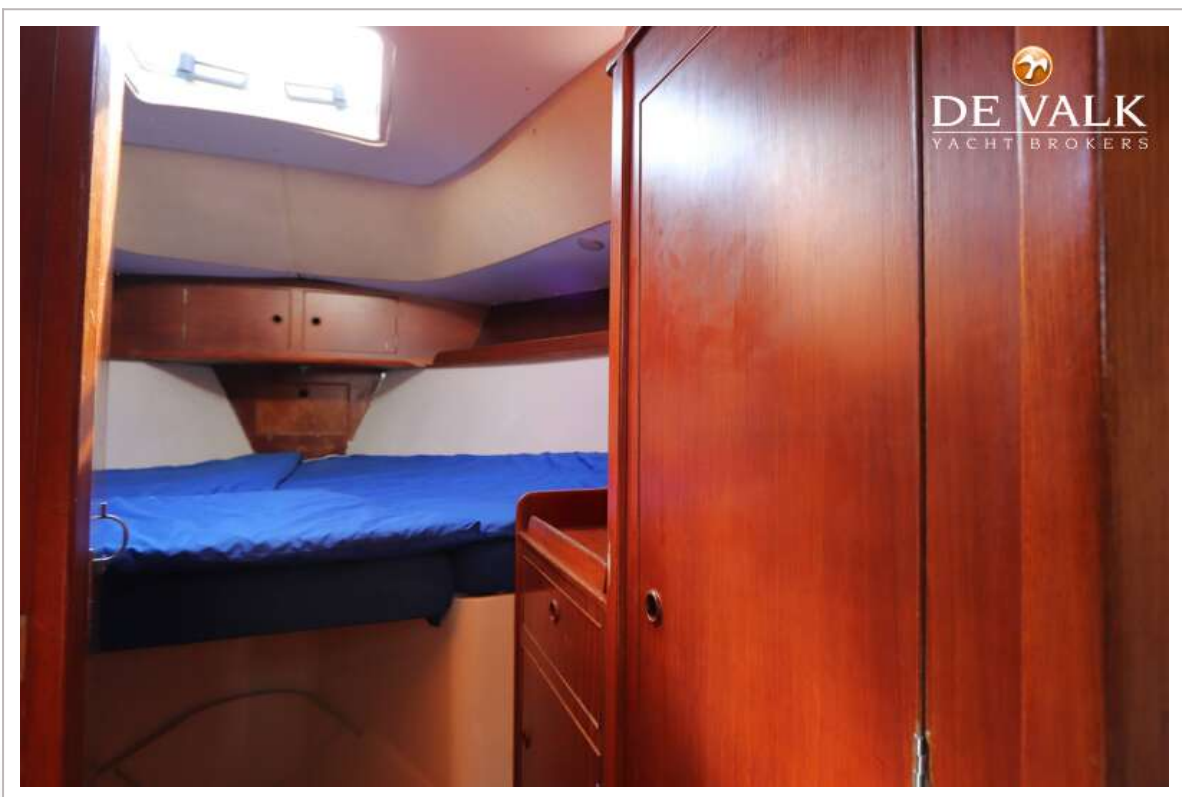
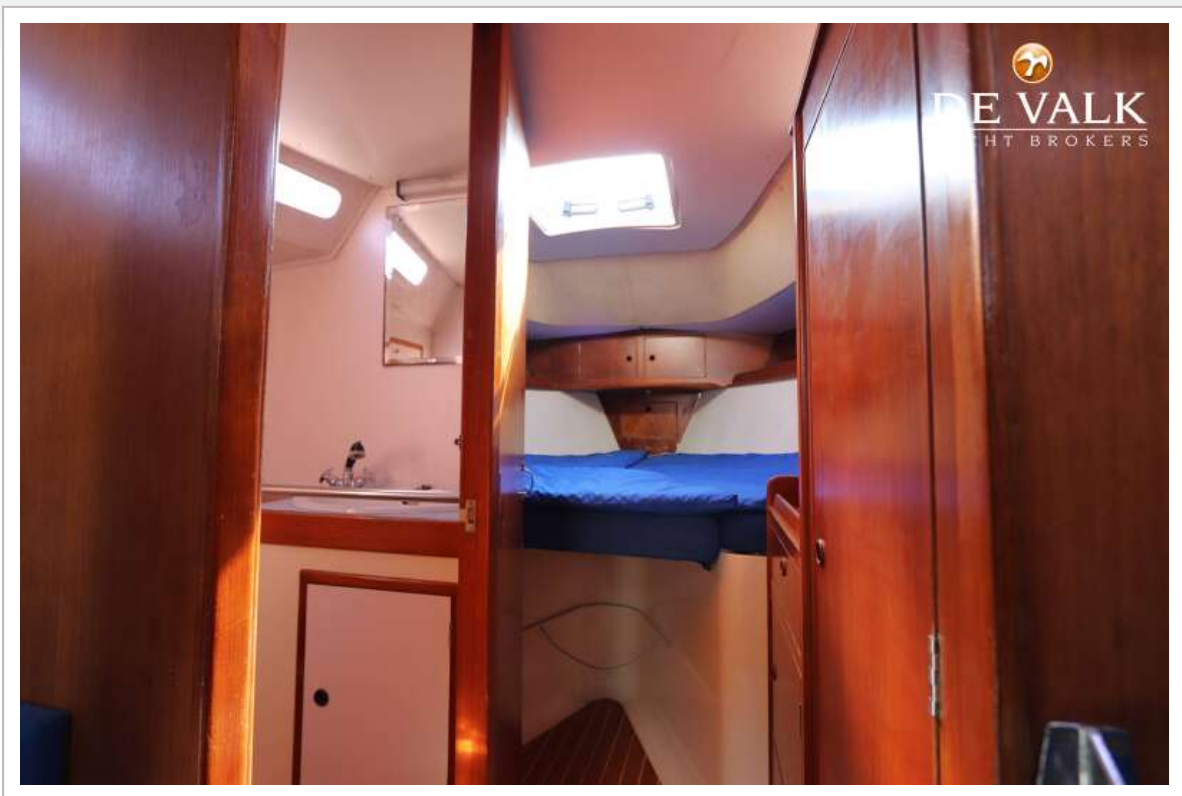


# NICHOLSON 40 AC

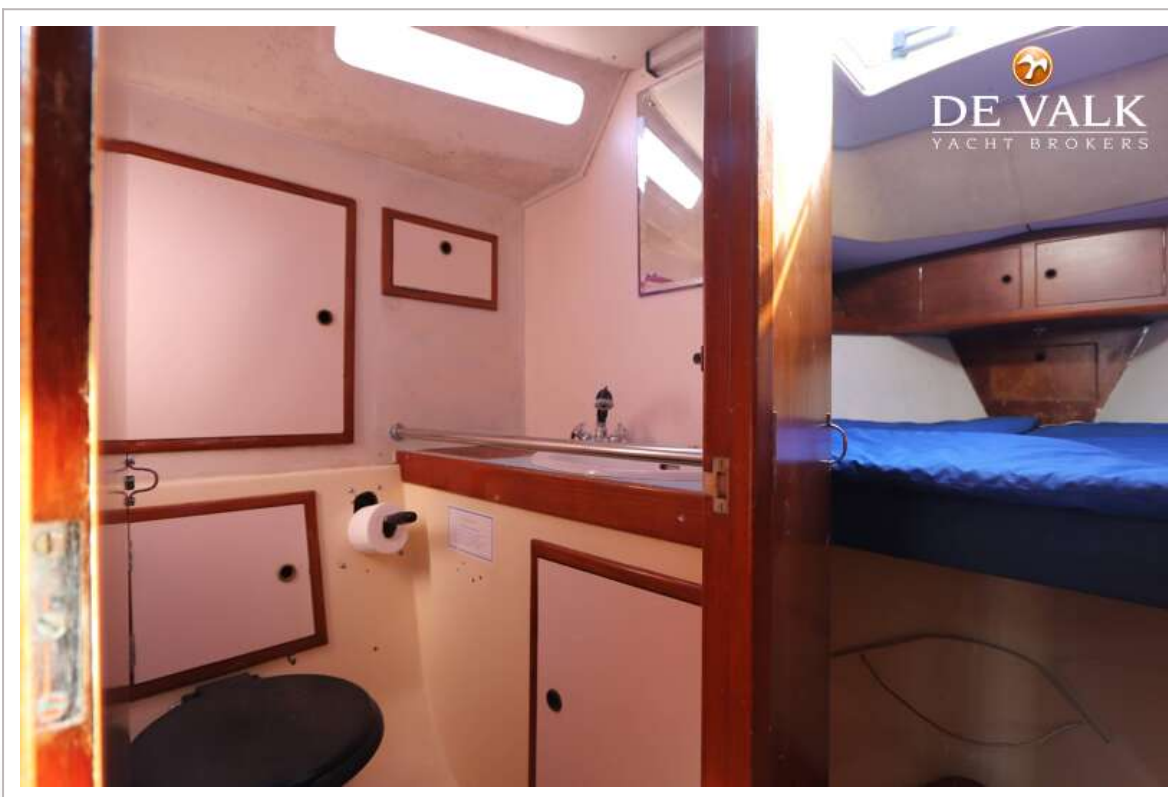




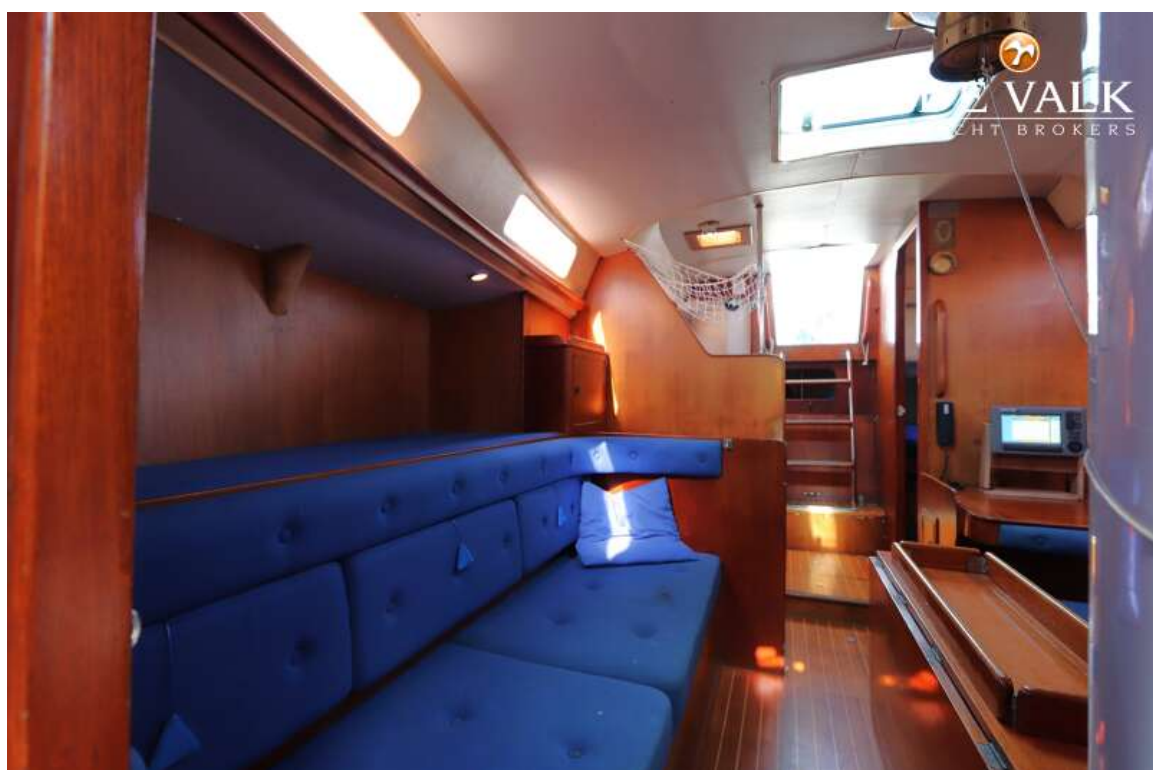
# NICHOLSON 40 AC



# NICHOLSON 40 AC

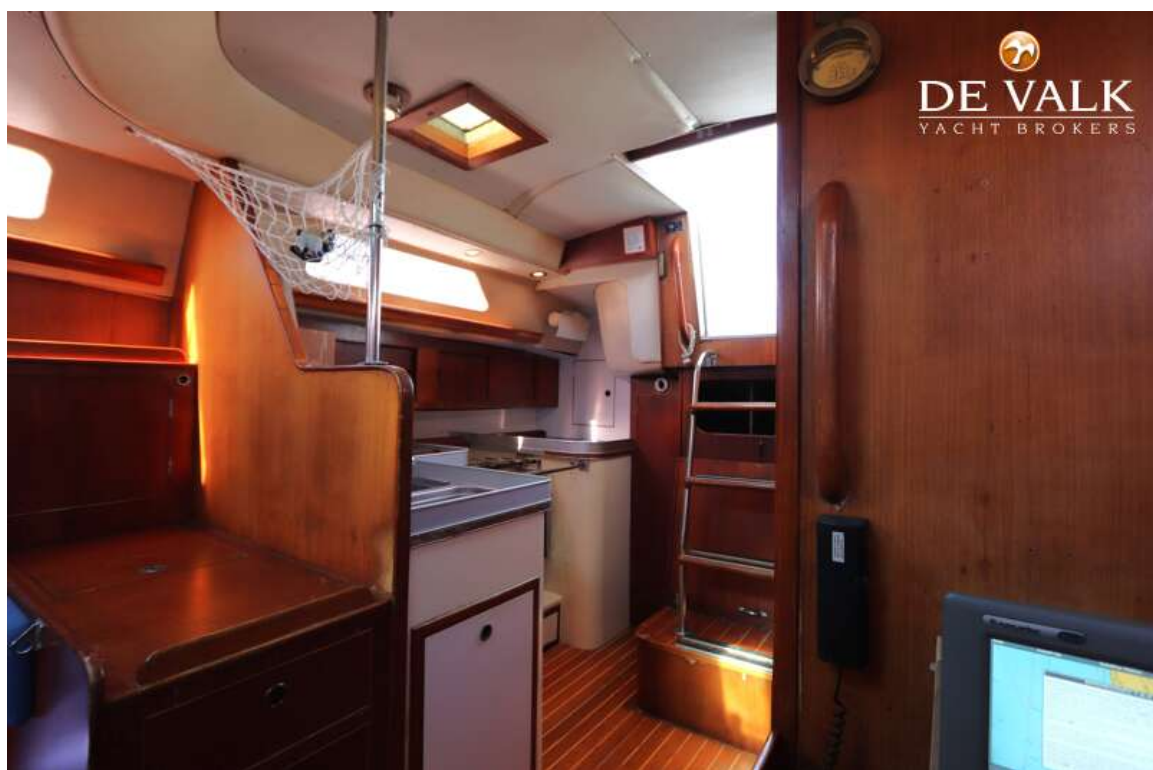
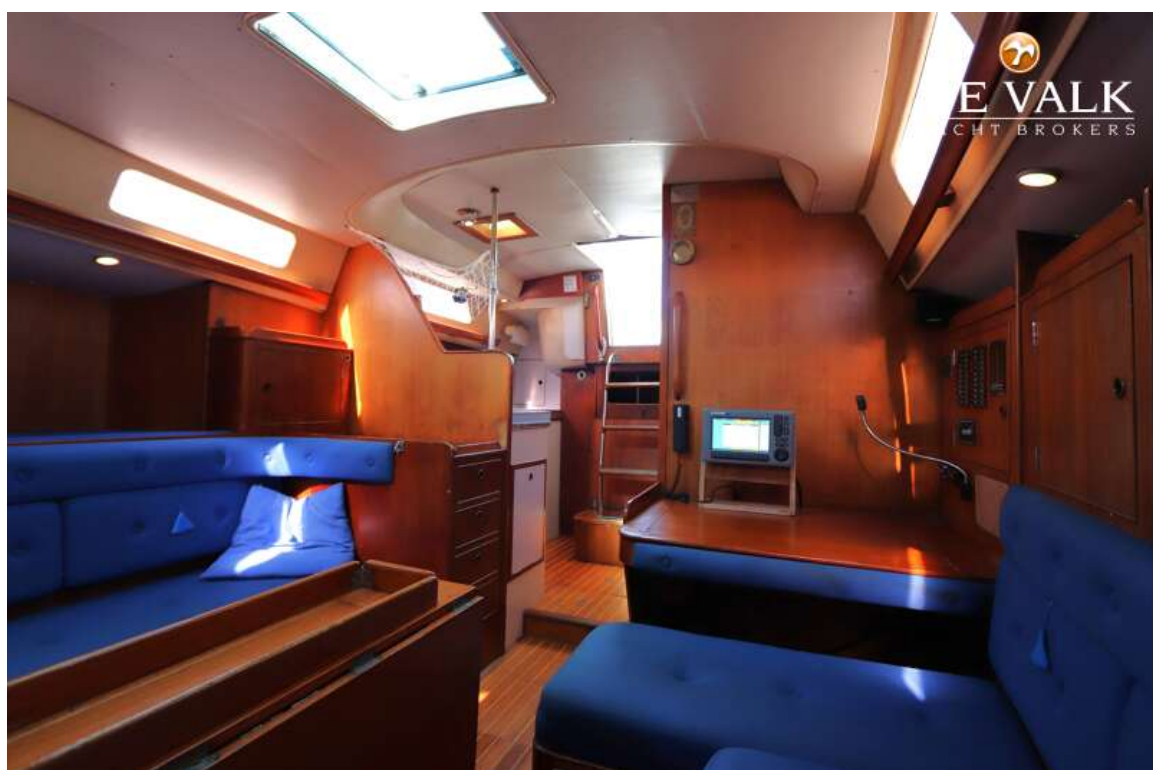


# NICHOLSON 40 AC

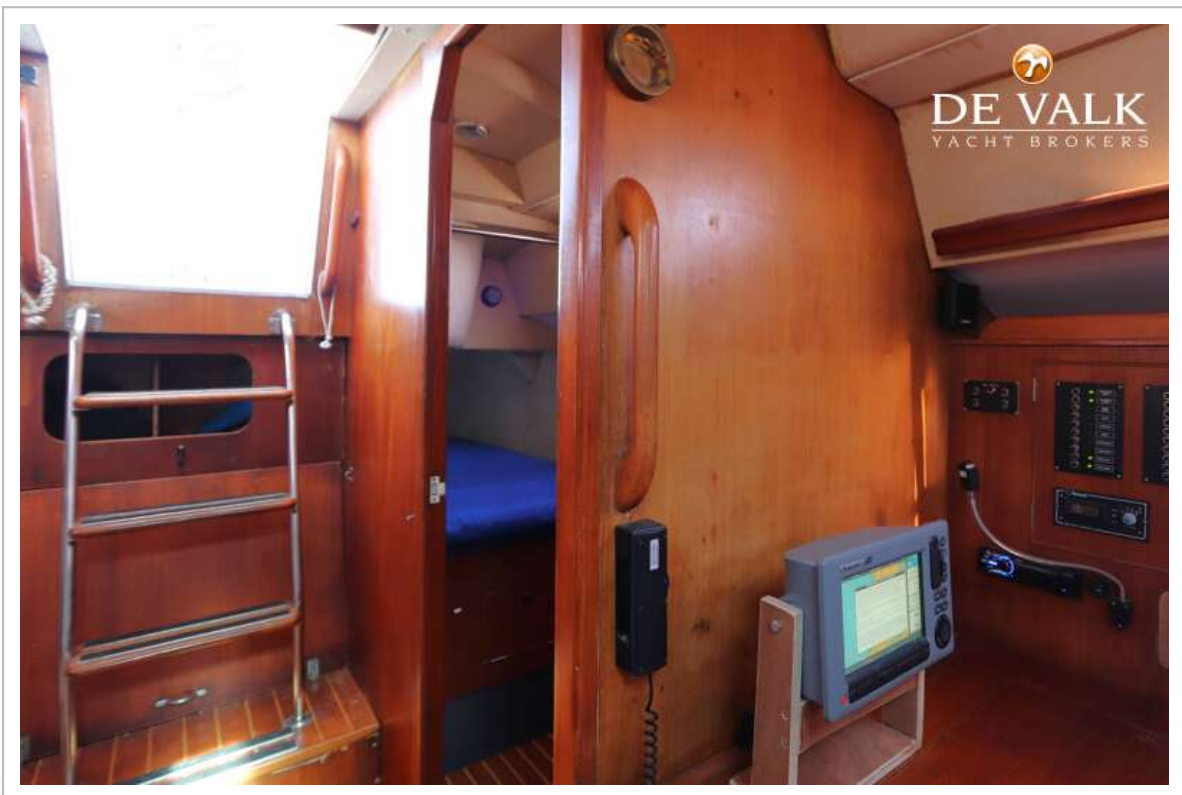




# NICHOLSON 40 AC



# NICHOLSON 40 AC



# NICHOLSON 40 AC

