



DE VALK  
YACHT BROKERS



SUCCES KRUISER 1080 SPORT



DE VALK  
YACHT BROKERS

# SUCCES KRUISER 1080 SPORT

## BROKER'S COMMENTS

The Succes aqua 1080 sport has a sporty, sleek line. With bow and stern thruster, boiler, separate shower, heating, VHF radio, solar panels and a generator, the ship is well equipped to make longer tours. A bright salon offers a pleasant space to get together. There is also plenty of space on the aft deck to stay cozy. The ship is always well maintained, annual maintenance demonstrable with invoices. VAT statement is available. Unfortunately the ship was already in winterstorage so pictures in the water were not possible.

*Jeanne Stukstette*

## SPECIFICATIONS

<b>Dimensions</b>	10.80 x 3.40 x 1.00 (m)	<b>Builder</b>	Succes Werf Marknesse
<b>Built</b>	1994	<b>Cabins</b>	2
<b>Material</b>	Steel	<b>Berths</b>	4
<b>Engine(s)</b>	1 x Iveco 8061M12 diesel	<b>Hp/Kw</b>	120.00 (hp), 88.32 (kw)
<b>Asking price</b>	sold (VAT )	<b>Lying</b>	at sales office

## CONTACT

<b>Sales office</b>	De Valk Limburg	<b>Telephone</b>	+31 630372559
<b>Address</b>	Schippersveld 3 6019 DE Wessem NL	<b>E-mail</b>	limburg@devalk.nl

## DISCLAIMER

These particulars are given in good faith as supplied but cannot be guaranteed.



# SUCCES KRUISER 1080 SPORT

## GENERAL

<b>Model</b>	SUCCES KRUISER 1080 SPORT
<b>Type</b>	motor yacht
<b>LOA (m)</b>	10,80
<b>Beam (m)</b>	3,40
<b>Draft (m)</b>	1,00
<b>Air draft (m)</b>	3,40
<b>Air draft min (m)</b>	2,80
<b>Headroom (m)</b>	1,95
<b>Year built</b>	1994
<b>Builder</b>	Succes Werf Marknesse
<b>Country</b>	The Netherlands
<b>Designer</b>	Succes
<b>Hull material</b>	steel
<b>Hull colour</b>	white
<b>Hull shape</b>	hard chine
<b>Keel type</b>	long keel
<b>Superstructure material</b>	steel
<b>Rubbing strake</b>	stainless steel
<b>Deck material</b>	steel
<b>Deck finish</b>	non-skid paint
<b>Antifouling (year)</b>	2021
<b>Window frame</b>	aluminium
<b>Window material</b>	tempered glass
<b>Deckhatch</b>	2
<b>Portholes</b>	aluminium 1
<b>Mast can be lowered</b>	manual
<b>Fuel tank (litre)</b>	yes
<b>Freshwater tank (litre)</b>	polyethylene 500 li
<b>Blackwater tank (litre)</b>	polyethylene 200 li
<b>Blackwater tank extraction</b>	deck extraction + pump



# SUCCES KRUISER 1080 SPORT

Wheel steering hydraulic

## ACCOMMODATION

Cabins	2
Berths	4
Interior	mahogany
Floor	teak
Aft deck	yes
Saloon	yes
Headroom saloon (m)	1,95
Heating	diesel ducted hot air Eberspächer D5L
Dinette to convert into berth	yes
Opening door to cockpit	yes
Countertop	granite
Sink	stainless steel
Cooker	calor gas 4 pit
Fridge	Elektrolux 12v-230V-gas
Freezer	In Fridge
Hot water system	220V + engine Boiler vetus
Water pressure system	electrical
Owners cabin	double bed
Bed length (m)	1,40x2,00
Wardrobe	hanging/drawers/shelves
Bathroom	separate
Toilet	separate
Toilet system	electric
Wash basin	in the bathroom
Shower	separate
Guest cabin 1	v-bed
Wardrobe	hanging and drawers
Extra info	Beds 7; 2 front 2 back 2 Dinette 1 sofa



# SUCCES KRUISER 1080 SPORT

## MACHINERY

No of engines	1
Make	Iveco
Type	8061M12
HP	120
kW	88.32
Fuel	diesel
Maximum speed (kn)	9
Cruising speed (kn)	6
Consumption (l/hr)	5
Engine hours	2616
Engine cooling system	seawater
Drive	shaft
Shaft seal	yes
Engine controls	bowden cable
Bowthruster	electric Vetus (incl afstandbediening + remote control + fernbedienung)
Sternthruster	electric Vetus
Propeller blades	3
Generator	wet exhaust Fisher Panda 4,5 230v Whisperer
Start battery	yes
Service battery	3x VESMF 105 (new 2023)
Bowthruster battery	yes
Sternthruster battery	yes
Battery charger	yes
Solar panel	(2019) 2x Whispersolar 80WP incl controlpanel suntrack

## NAVIGATION

Compass	Vetus
Depth sounder	Vetus
Log	yes



# SUCCES KRUISER 1080 SPORT

VHF	Simrad AHS 81
Rudder angle indicator	yes
Radio receiver	yes
Navigation lights	yes
Searchlight	yes

## EQUIPMENT

Fixed windscreen	yes
Sprayhood	yes
Bimini	2020 neue
Window cover	yes
Cockpit table	yes
Cockpit chairs	yes
Bathing platform	yes
Boarding ladder	yes
Transom door	yes
Anchor	yes
Anchor chain	yes
Dinghy	rigid inflatable Zodiac Cadet 300 Rib ALU/FR-XDC incl Mercury F5M OP218035
Outboard	yes
Davits	stainless steel
Davits controls	manual
Sea railing	stainless steel
Grab rail (superstructure)	stainless steel
Railing side opening gates	yes
Wiper	yes
Horn	yes
Mooring lines	yes
TV	yes
Radio	yes



# SUCCES KRUISER 1080 SPORT

Cockpit speakers	yes
Speakers in salon	yes
Fire extinguisher	4x



# SUCCES KRUISER 1080 SPORT





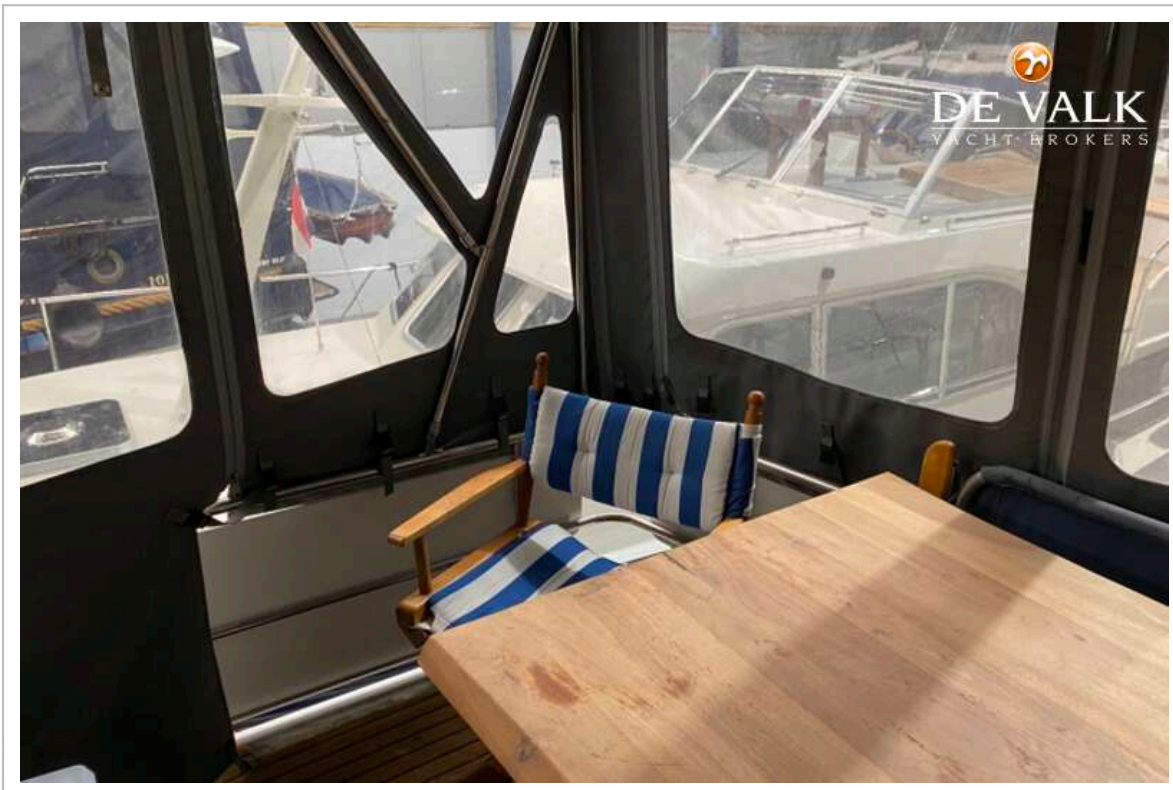
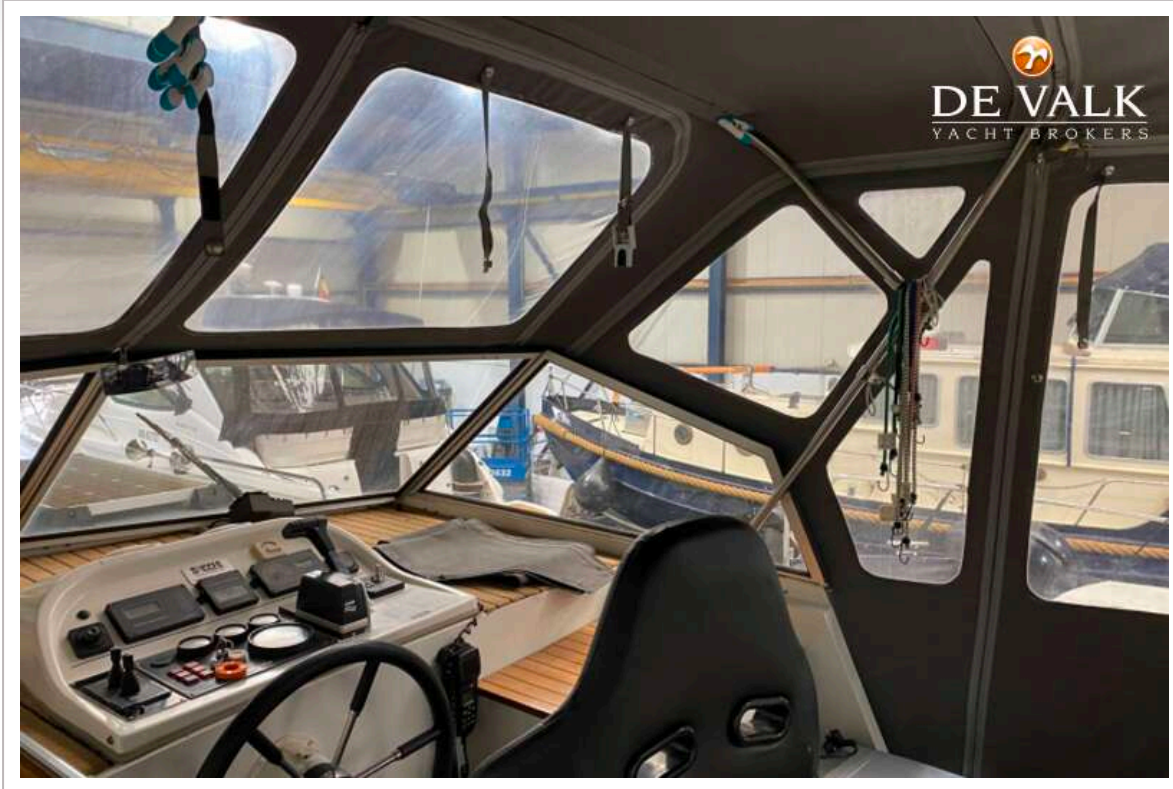
# SUCCES KRUISER 1080 SPORT



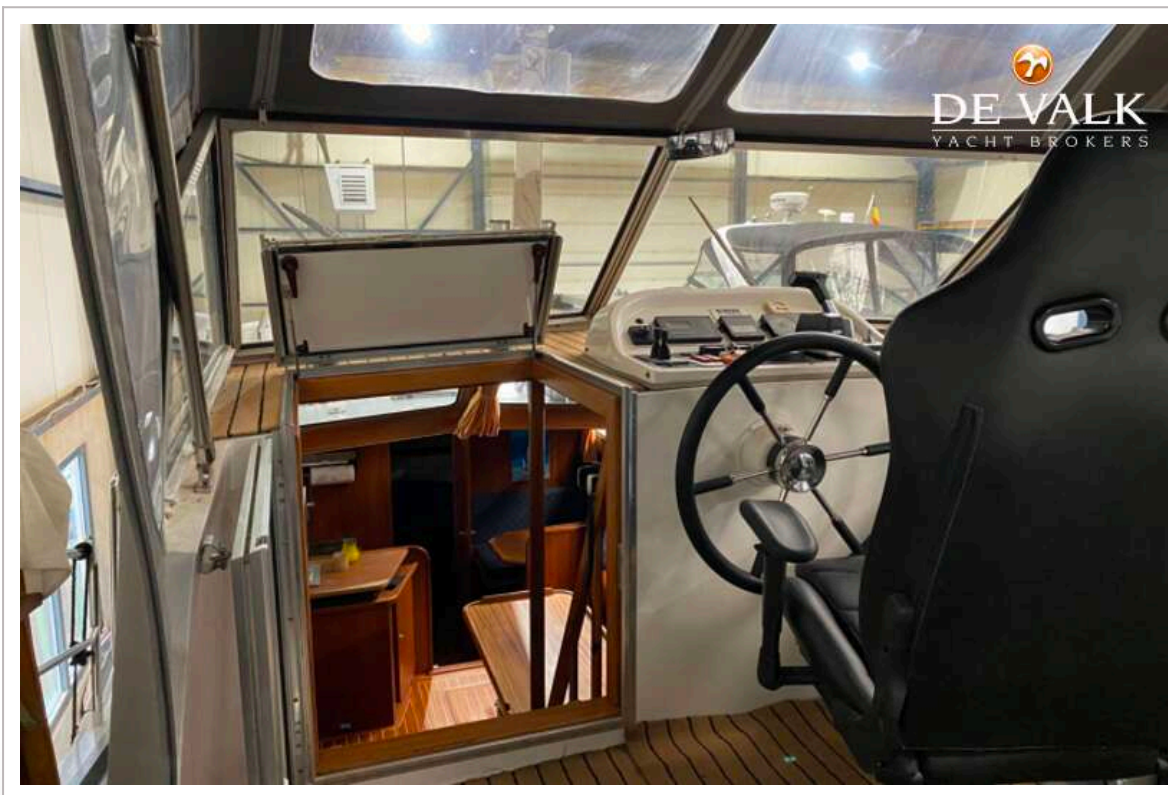
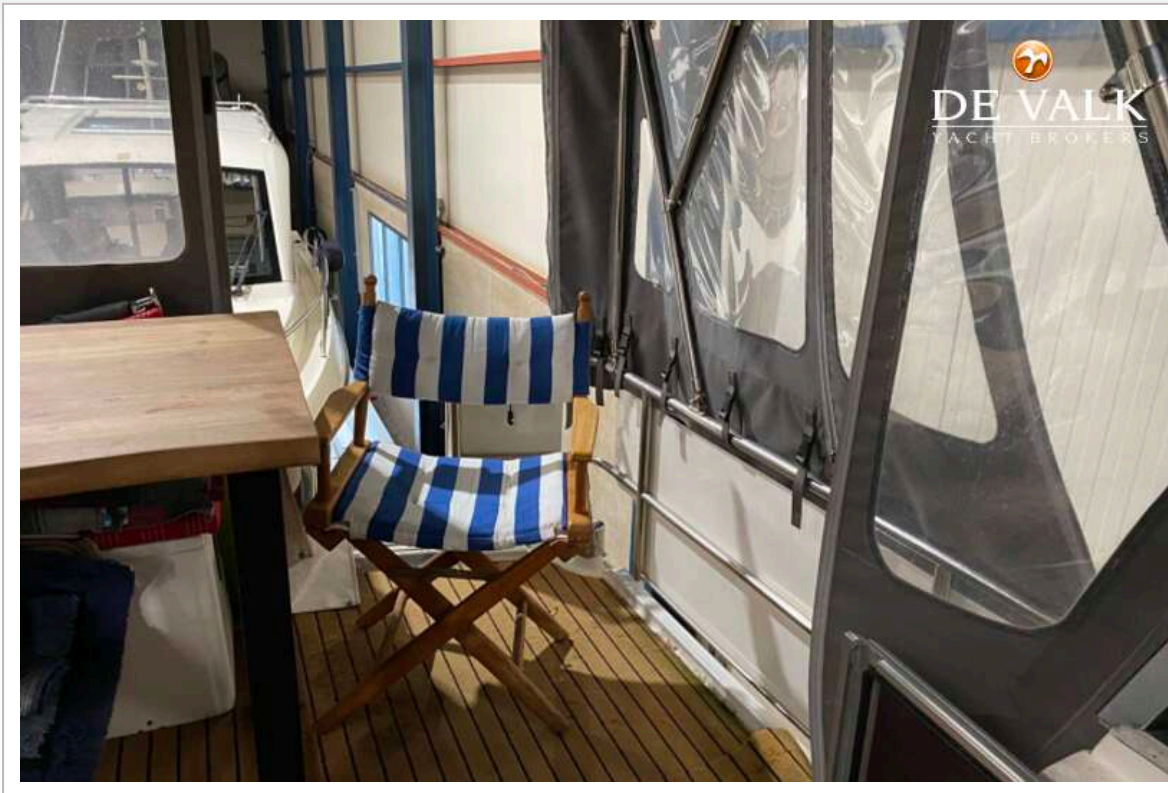
# SUCCES KRUISER 1080 SPORT



# SUCCES KRUISER 1080 SPORT



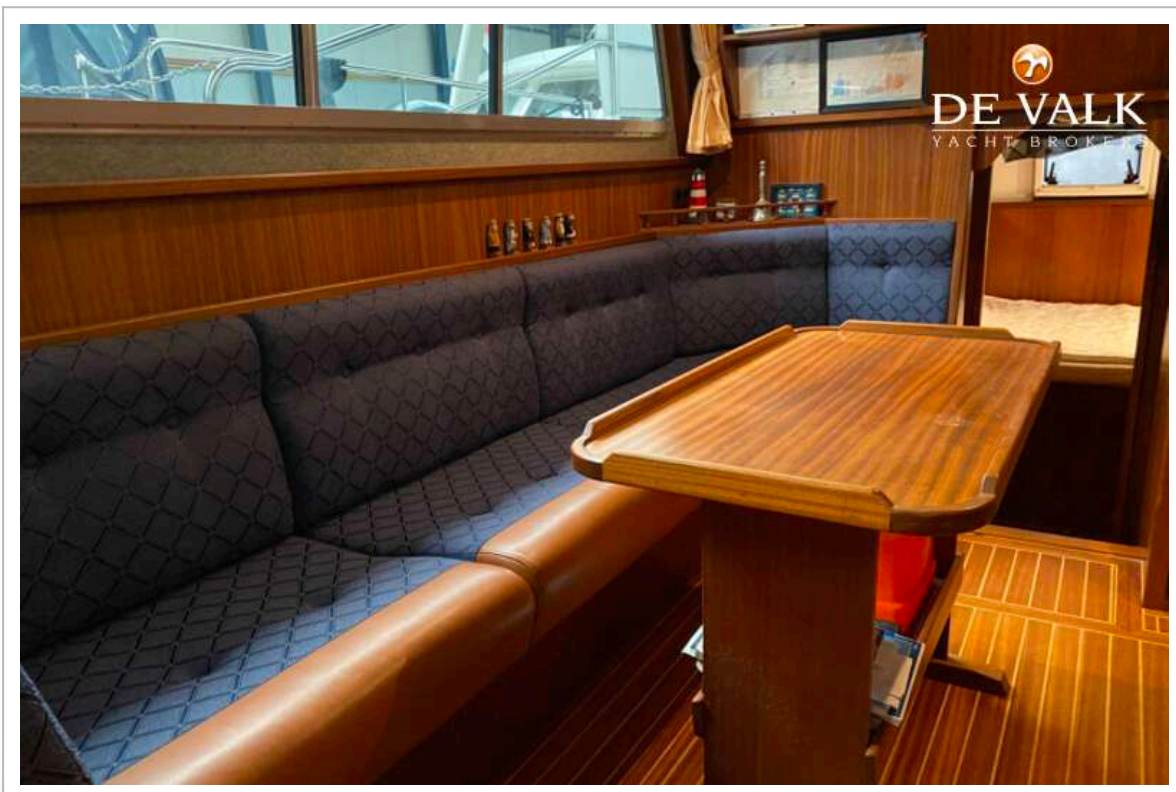
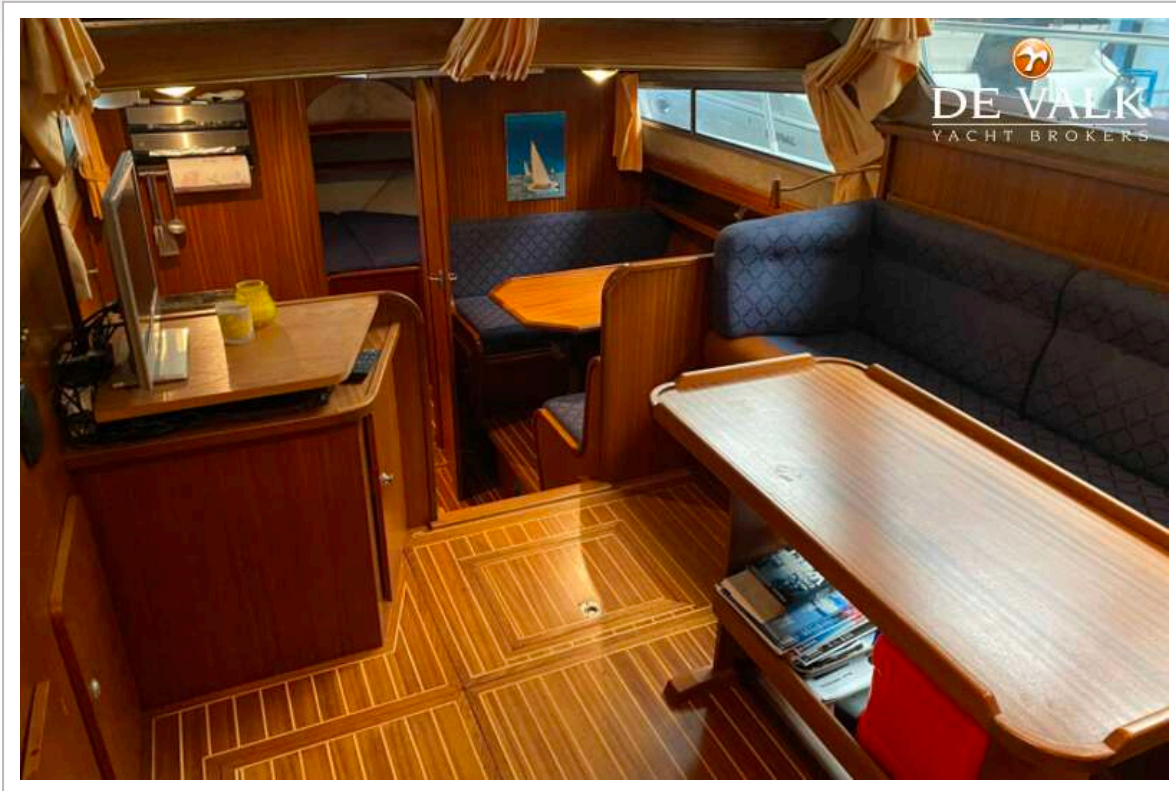
# SUCCES KRUISER 1080 SPORT



# SUCCES KRUISER 1080 SPORT



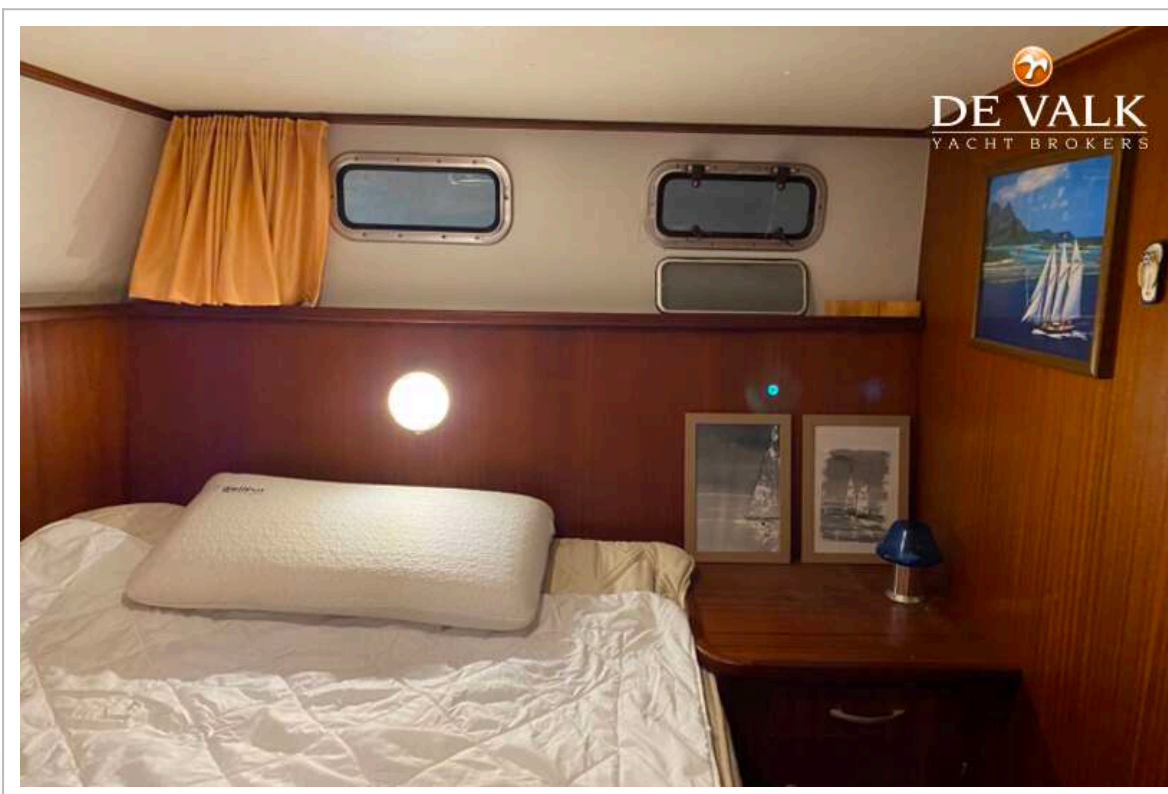
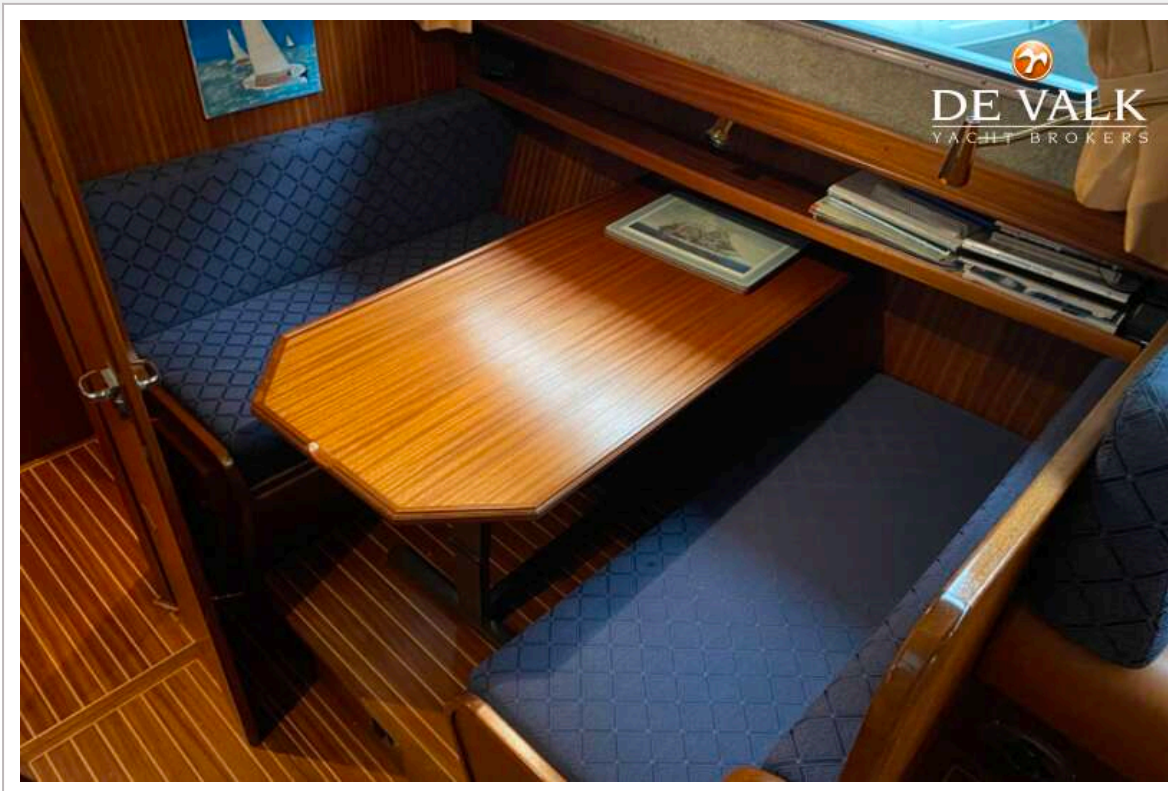
# SUCCES KRUISER 1080 SPORT



# SUCCES KRUISER 1080 SPORT

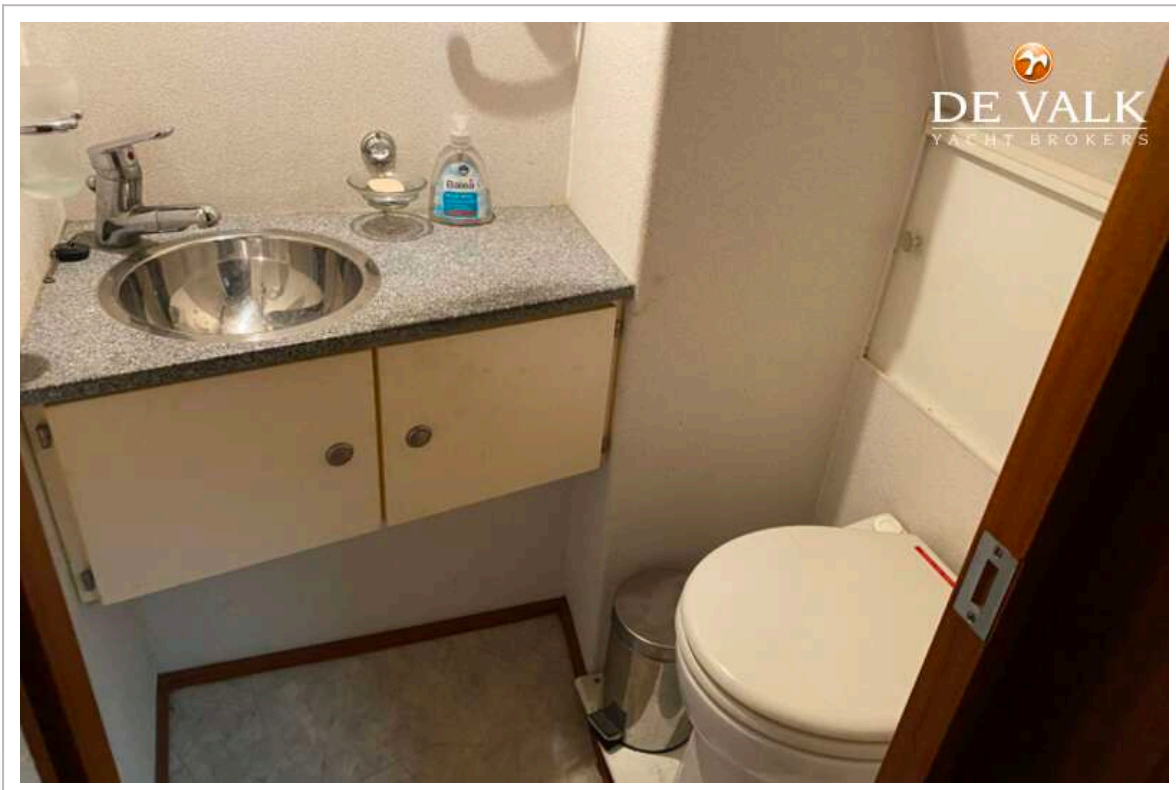


# SUCCES KRUISER 1080 SPORT

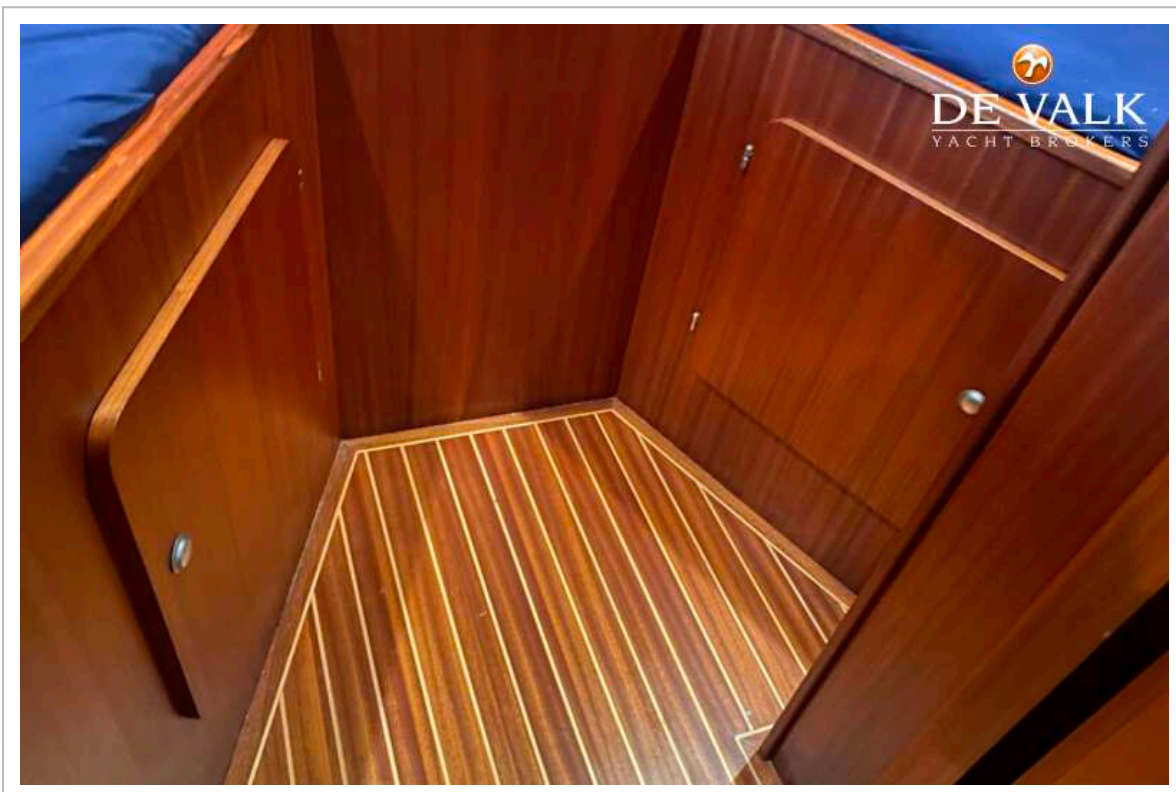




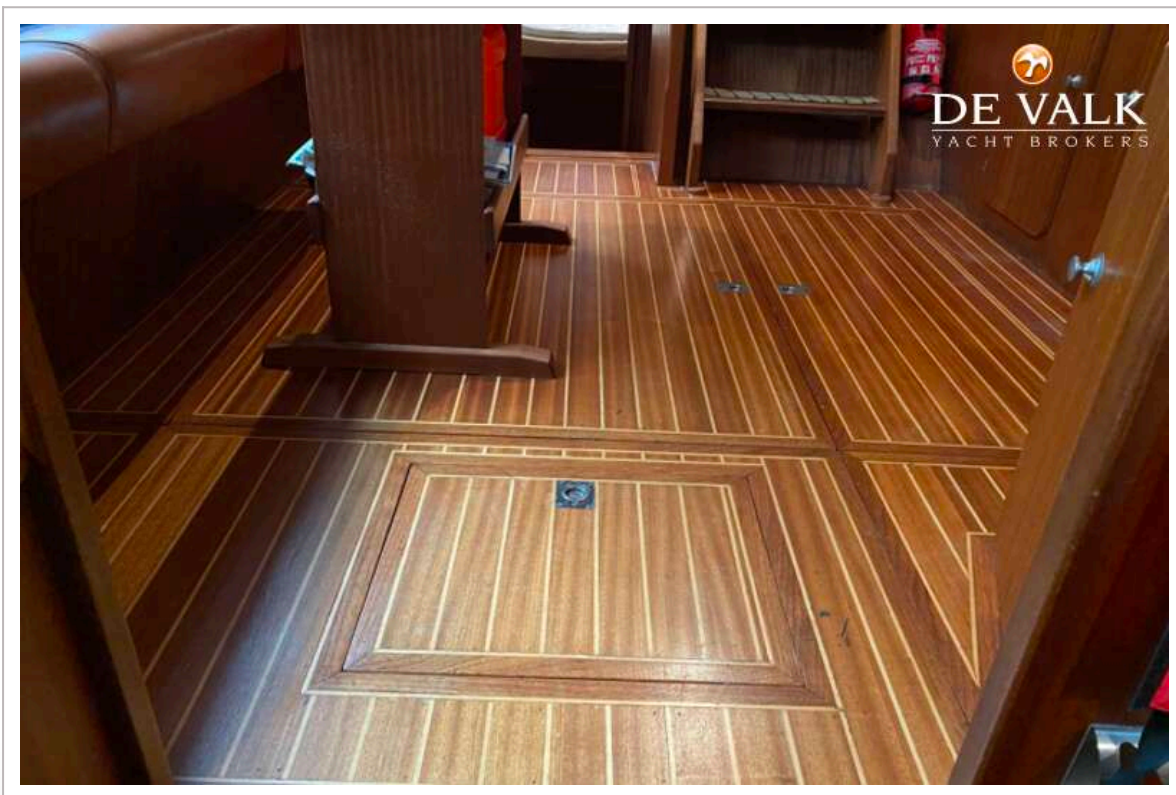
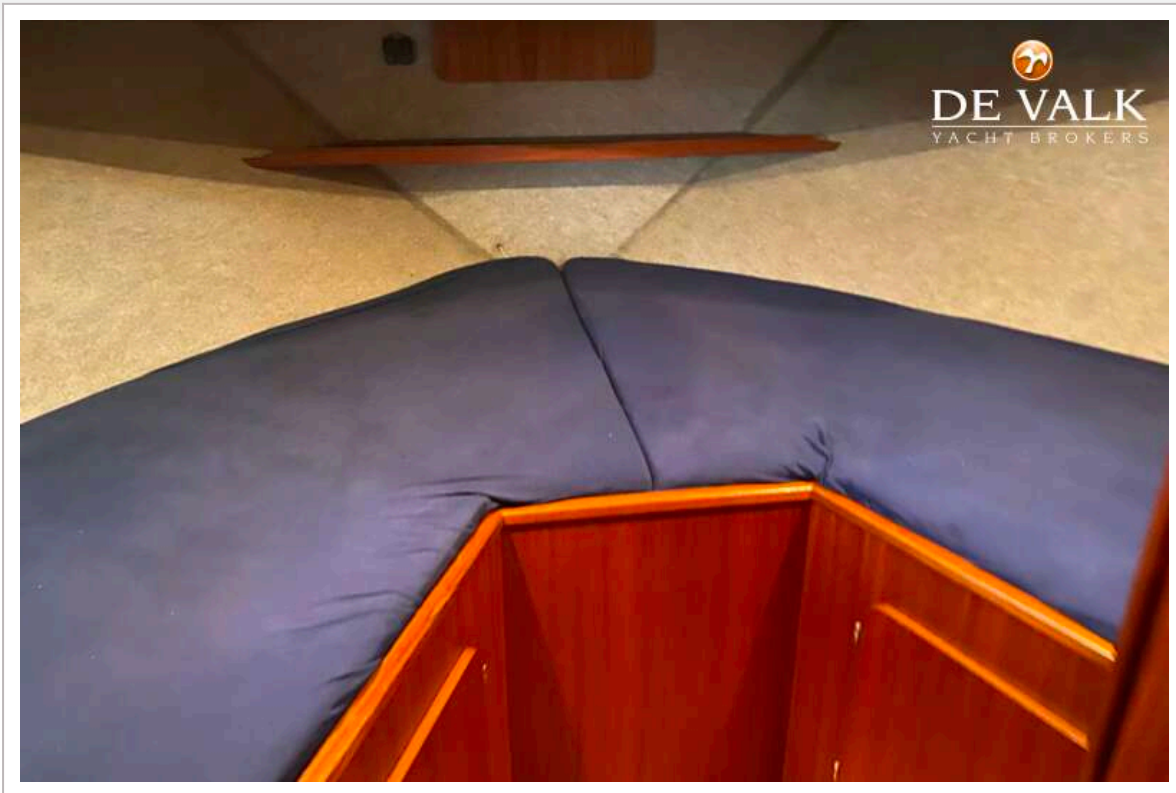
# SUCCES KRUISER 1080 SPORT



# SUCCES KRUISER 1080 SPORT



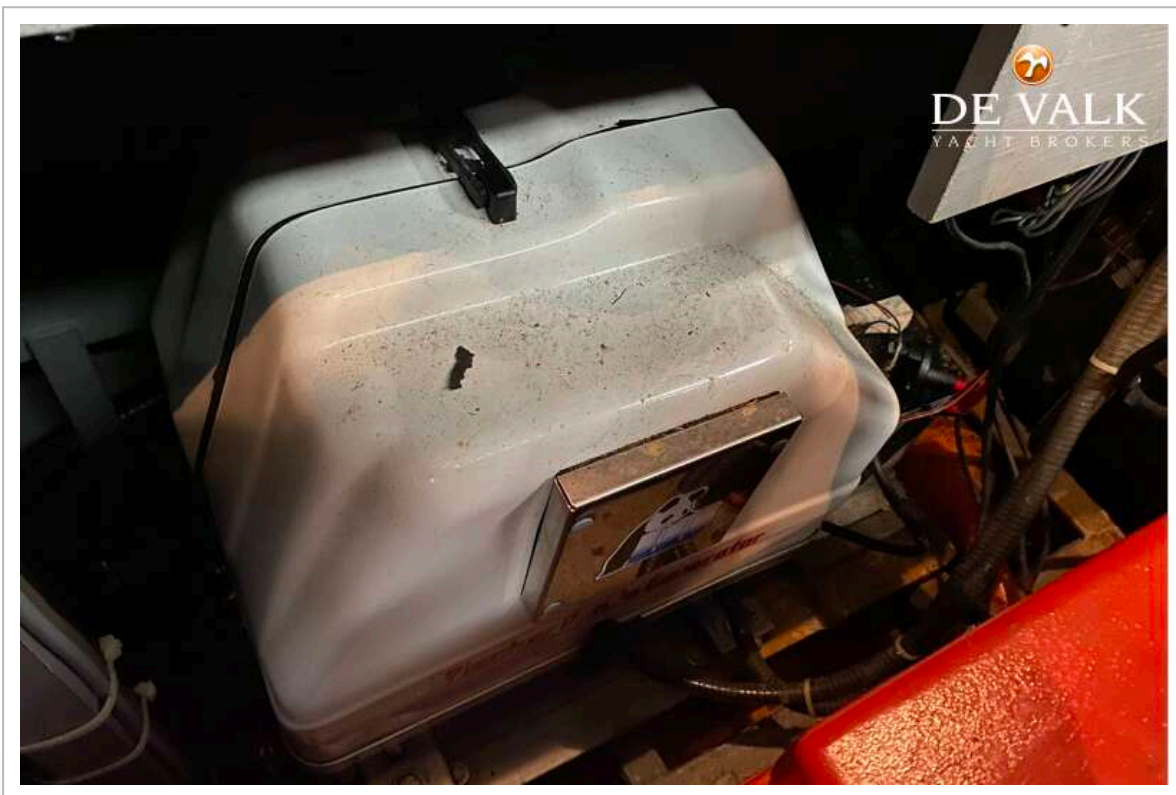
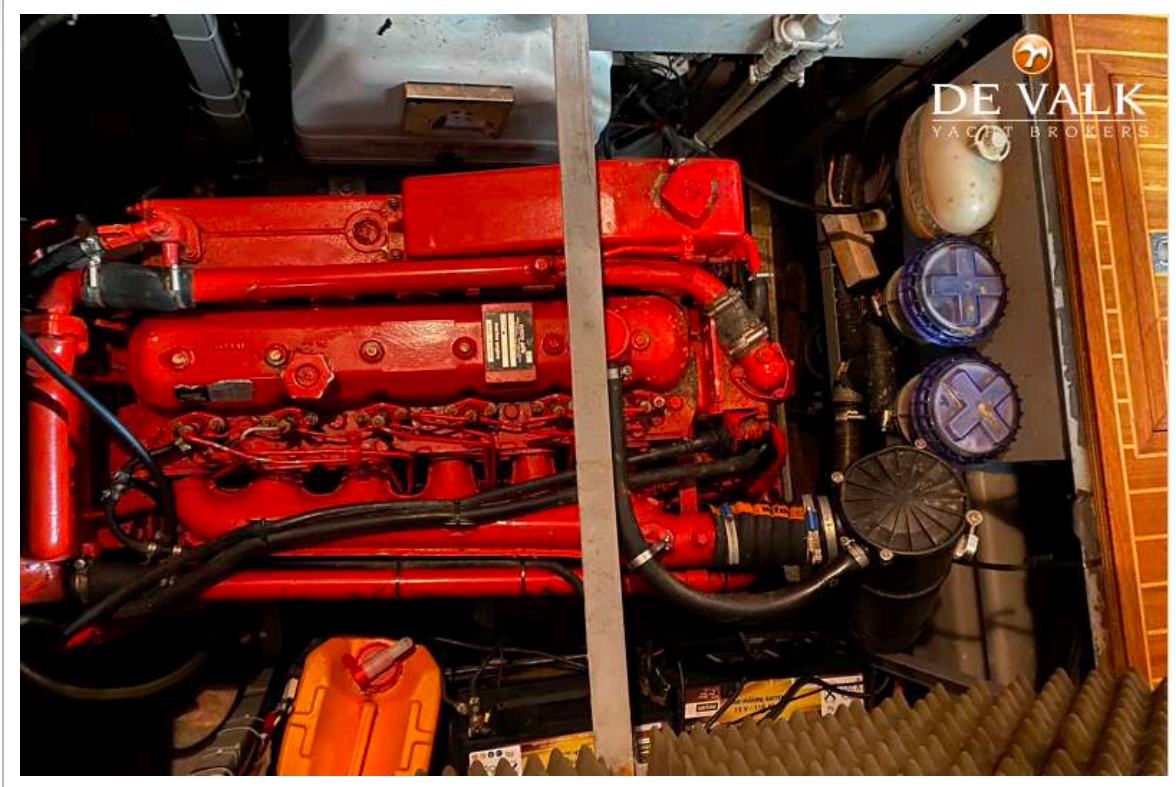
# SUCCES KRUISER 1080 SPORT



# SUCCES KRUISER 1080 SPORT



# SUCCES KRUISER 1080 SPORT



# SUCCES KRUISER 1080 SPORT

