



DE VALK
YACHT BROKERS



HALLBERG RASSY 412



DE VALK
YACHT BROKERS

HALLBERG RASSY 412

BROKER'S COMMENTS

The Hallberg Rassy 412 is sporty rigged with a relatively high mast and a self-tacking jib. The relatively long waterline, the 'open' aft cockpit and the width of the stern are revolutionary for the Scandinavian builder. This cruiser can compete with many performance cruisers, is more user-friendly, has a stable value and is a traditionally built, indestructible boat. The boat has been continuously professionally maintained, is very complete and is ready to start the sailing season immediately! You are very welcome in Sint Annaland to come and view this beautiful boat.

Jan-Ward van Dantzig

SPECIFICATIONS

Dimensions	12.61 x 4.10 x 1.99 (m)	Builder	Hallberg-Rassy
Built	2014	Cabins	3
Material	GRP	Berths	7
Engine(s)	1 x Volvo Penta D2-75F diesel	Hp/Kw	75.00 (hp), 55.20 (kw)
Asking price	sold (VAT)	Lying	at sales office

CONTACT

Sales office	De Valk Sint Annaland B.V.	Telephone	+31 (0)166 601 000
Address	Koelhuisweg 4 4697 RM Sint Annaland NL	E-mail	sintannaland@devalk.nl

DISCLAIMER

These particulars are given in good faith as supplied but cannot be guaranteed.



HALLBERG RASSY 412

GENERAL

Model	HALLBERG RASSY 412
Type	sailing yacht
LOA (m)	12,61
LWL (m)	11,50
Beam (m)	4,10
Draft (m)	1,99
Air draft (m)	20,55
Headroom (m)	1,96
Year built	2014
Launched	2016
Builder	Hallberg-Rassy
Country	Sweden
Designer	German Frers
Displacement (t)	11,2
Ballast (tonnes)	lead 4
CE norm	A
Hull material	GRP
Hull colour	white With a blue striping and waterline
Hull shape	round-bilged
Keel type	fin keel
Superstructure material	GRP
Rubbing strake	stainless steel
Deck material	GRP
Deck finish	teak
Superstructure deck finish	teak
Cockpit deck finish	teak
Antifouling (year)	2023
Dorades	4 x
Window frame	aluminium With Ocean Air Luxaflex
Window material	polycarbonate



Deckhatch	Lewmar (Flush) with shades & mosquito screens
Portholes	aluminium Lewmar with mosquito screens in all cabins
Fuel tank (litre)	polyethylene 340 (2 x 170L tank)
Level indicator (fuel tank)	yes
Freshwater tank (litre)	polyethylene Total 530 (in 2 tanks)
Level indicator (freshwater)	yes
Blackwater tank (litre)	stainless steel 2 x 70
Blackwater tank extraction	deck extraction + uw line 2 x
Wheel steering	rack & pinion Lewmar pedestal & leather covered stainless steel steering wheel
Emergency tiller	yes
More info on hull	Old layers of antifouling removed & epoxy applied in spring 2021
Extra info	New in 2022 : Rudder bearings
Extra info	High Gloss varnished entrance hatches. Stainless steel cleats (also a-midships).
Extra info	The boat was delivered to the first owner in 2014 and only put into use in 2016. The boat was purchased by the current owner in 2017.

ACCOMMODATION

Cabins	3
Berths	7
Interior	mahogany On starboard in the saloon are two comfortable chairs
Floor	teak and holly
Saloon	Off-white fabric upholstery
Headroom saloon (m)	1,95
Heating	diesel ducted hot air Webasto Airtop 5,5 kW (with remote on phone) serviced in 2021
Heating 2	electric 220V TwinHornet - 35 in the engine room (Frost protector)
Chart table	On Starboard side
Dinette	Both sides of the saloon table can be folded down



Convertible berth	Port side saloon seat (with a Lee-Cloth)
Galley	On port side - Headroom : 1,90 m
Countertop	Duropol White
Sink	stainless steel 2 x
Cooker	calor gas ENO 2 Burner
Oven	ENO
Fridge	Toploader with an Isotherm compressor
Freezer	Sliding toploader Isotherm 12 Volt box (freezer or fridge)
Hot water system	220V + engine 40 liter Isothemp Boiler
Water pressure system	electrical Jabsco pump (New in 2022) & Carbon water filter
Owners cabin	double bed In the bow - Headroom : 1,91 m
Bed length (m)	2,00 x 1,65
Wardrobe	hanging and shelves
Bathroom	en suite With an electric towel dryer - headroom : 1,91 m
Toilet	en suite New in 2020 : soft closing seat
Toilet system	electric Johnson
Wash basin	in the bathroom
Shower	en suite With perspex door and an electric shower drain water pump
Guest cabin 1	double bed Port Aft Cabin - Headroom : 1,88 m
Bed length (m)	2,05 x 1,55
Wardrobe	hanging and shelves
Bathroom	shared With an electric towel dryer - headroom : 1,83 m
Toilet	shared New in 2020 : soft closing seat
Toilet system	electric Johnson
Wash basin	in the bathroom
Shower	shared With an electric shower drain water pump
Extra info	Extra topper over the mattresses
Guest cabin 2	double bed Starboard Aft Cabin - Headroom : 1,88 m
Bed length (m)	2,05 x 1,55
Wardrobe	hanging and shelves
Extra info	Extra topper over the mattresses



Washing machine

Candy Aquamatic 3,5 Kg - 230 Volt Class AA - 1000rpm

Extra info

LED interior lights, dimmable in the saloon, also above the windows in the saloon (behind the curtains) and in both bathrooms. There are 2x red LED night lights in the saloon. 2 x Batsystem LED Lighting Voltage Stabilizer.

Extra info

Off-White carpet on the floor. Wine cellar under the floor boards.

MACHINERY

No of engines

1

Make

Volvo Penta

Type

D2-75F

HP

75

kW

55.20

Fuel

diesel

Year installed

2014

Maximum speed (kn)

8,5

Cruising speed (kn)

7,5

Consumption (l/hr)

3

Engine hours

1156

Engine cooling system

freshwater heat exchanger

Drive

sail-drive

Saildrive seal

2014

Engine controls

electrical Volvo

Bowthruster

electric Retractable Side Power - 8 Hp - Overhauled in 2019

Sternthruster

electric Retractable Side Power SRVP 100/185T - 8 Hp - Overhauled in 2023

Exhaust

watercooled

Propeller type

folding New in 2021 : Gori with overdrive

Propeller blades

3

Manual bilge pump

yes

Electric bilge pump

yes



Electrical installation	12 & 220 Volt
Start battery	New in 2021 : 1 x 50 Ah Optima Blue Top
Service battery	New in 2020 : 6 x 135 Ah Litium Ion Yaro Cell
Bowthruster battery	New in 2020 : 2 x 160 AH
Sternthruster battery	New in 2020 : 2 x 160 AH
Battery monitor	New in 2023 : Mastervolt Digital Masterlink
Battery charger	New in 2021 : 2 x Mastervolt Magic 12-12-20
Battery charger/inverter	Mastervolt 12V/100A/2500W
Diode battery combiners	New in 2021
Shorepower	with cable Mastervolt shore power connection on the boat
Insulation transformer	Mastervolt Mass GI 3.5
Watermaker	Spectra Newport 400 MKII - 12 Volt (used & serviced annually)
Extra info	May 2023 : New exhaust elbow, turbo cleaned and engine serviced. The shafts of the bowtruster and sterntruster have been upgraded and provided with double rubber seals in 2023.
Extra info	Volvo Penta 150S-B Saildrive. 2 x 115A alternator on the engine. Sterling Power Producs Advanced Digital Alternator to Battery Charger 210 A. Dieselfilter with a water seperator.
Extra info	Mastervolt MasterBus / Combi Interface. There is an emergency main switch to connect the engine battery and the domestic batteries to be able to start the engine anytime. Both bow- and stern truster provided with a Side-Power PPC800.

NAVIGATION

Compass	Silva (on the steering pedestal)
Depth sounder/log	Raymarine i70
Windset	Raymarine i70
Repeater	Raymarine i70
VHF	Raymarine Ray 260E & New (2022) handset + speaker in the cockpit
Autopilot	Raymarine p70 - Type 2 & Raymarine Smart Controller remote
Rudder angle indicator	Via autopilot



Plotter/GPS	2 x Raymarine hybridtouch (e125 & e165) & 1x Raymarine a65 WiFi
Radar/GPS/plotter	2 x Raymarine hybridtouch (e125 & 1x e165) & 4kW HD18' radardome
Wifi antenna	Digital Yacht WL510 WiFi Access System
Electronis chart(s)	yes
AIS transceiver	Raymarine AIS 650 Class B
Camera	Raymarine FlirT220 Night Vision (rarely used - functioning unknown - last test was in spring 2023 and was working).
Navigation lights	Aqua Signal LED
Extra info	LED cockpit light (in the boom)
Extra info	Teltonika RUT955 Antenne splitter & Netgear ProSafe 5 Port Gigabit Switch Model GS105.

EQUIPMENT

Fixed windscreen	Windscreen with opening mid window
Sprayhood	Off-White
Cockpit cover	Off-White
Cockpit table	Folding & high-gloss varnished teak with folding side blades
Bathing platform	Covered with teak
Boarding ladder	stainless steel
Bow ladder	Removable - stainless steel
Deck shower	With hot & cold pressured water
Anchor	Delta 1 x 25 Kg & an extra anchor roller
Anchor chain	60 meter 8mm chain
Anchor 2	Bruce Aft : 20 Kg stainless steel - with a lead-weighted rope
Windlass	electrical Lewmar
Windlass aft	electrical New 2022 : Side-Power 1.000 W (smart version with speed reducer)
Deck wash	With sea water
Outboard support	Teak (on the pullpit)
Sea railing	wire In stainless steel - double wired



Grab rail (superstructure)	teak
Railing side opening gates	On both sides. There is a stainless steel ladder available, which can be hung, to create an easy access on board.
Pushpit	Stainless steel
Pulpit	Stainless steel
Lifebuoy	Safety Line
Danbuoy	Plastimo IOR Danbuoy
Safety lines on deck	New
Horn	electric Marco Sistema Mare Signal Horn IMO Class IV
Radar reflector	New in 2023 : EchoMax Active-S BAND - Sea-Me
Fenders	yes
Mooring lines	yes
Spare parts	yes
Alarm system	Functioning unknown, not used since 2017
TV	Samsung (on a rails - electric up/down)
Radio	Fusion MS AV 700i with a remote control on the steering pedestal
Cockpit speakers	2 x stainless steel Sea & Symphony
Speakers in salon	2 x Canon
Clock - barometer	Stainless steel Wempe clock, Barometer and Hydrometer
Fire extinguisher	3 x
Latest extinguisher survey	Need to be checked / renewed
Extra info	High-Gloss varnished teak chart blades in the cockpit on both sides of the entrance. Removable & High-Gloss varnished teak cupholder on the steering pedestal. Cover over the steering wheel and pedestal.
Extra info	Safety eyes in the cockpit (for life-lines). Courtesy Lights in the cockpit on the steering pedestal.
Extra info	The burglar alarm has not been used since 2017 (unknown whether the system still functions). The gas hoses have been replaced in 2018 by stainless steel hoses.

RIGGING



Rigging	fractional
Standing rigging	wire (checked in 2022) - Aluminium Hasselfors pipes around tentioners
Brand mast	Seldén
Material mast	aluminium
Spreaders	3 x set
Fully battened mainsail	New in 2020 : Elvstrom EPEX : vertical full battened furling mainsail (larger than original sail)
Stoway mast	Selden Furlin (Electric)
Jib	New in 2023 : Elvstrom EPEX : Furling Selftacking Jib (larger than original sail) with a grey UV protection strip
Genoa furler	Electric Furlex TDE Furler (belt replaced in 2022 + spare belt)
Genoa cover	New in 2023 (never used) : Elvstrom
Code Zero	Elvstrom with a furler and an endless reefline with a tentioner
Gennaker	New in 2018 : Elvstrom Gennaker A (approx. 150m2)
Self tacking jib installation	Selden
Reefing System	main in-mast furling (Electric)
Backstay adjuster	tackle
Boomvang	gasspring Rodkicker
Primary sheet winch	2 x Lewmar 40EST (electric)
Genoa sheetwinches	2 x Lewmar 50EST (electric)
Gennaker pole	stainless steel (removable)
Extra info	Gennaker & Code 1 sheets (New in 2024), Mainsail outhaul & mainsail sheet (New in 2023), genoa sheets (New in 2020), double spinnaker halyard (to be replaced next year). 12 x Spinlock jammer in the cockpit.
Extra info	Elvstrom furling mainsail as a spare available



HALLBERG RASSY 412



HALLBERG RASSY 412



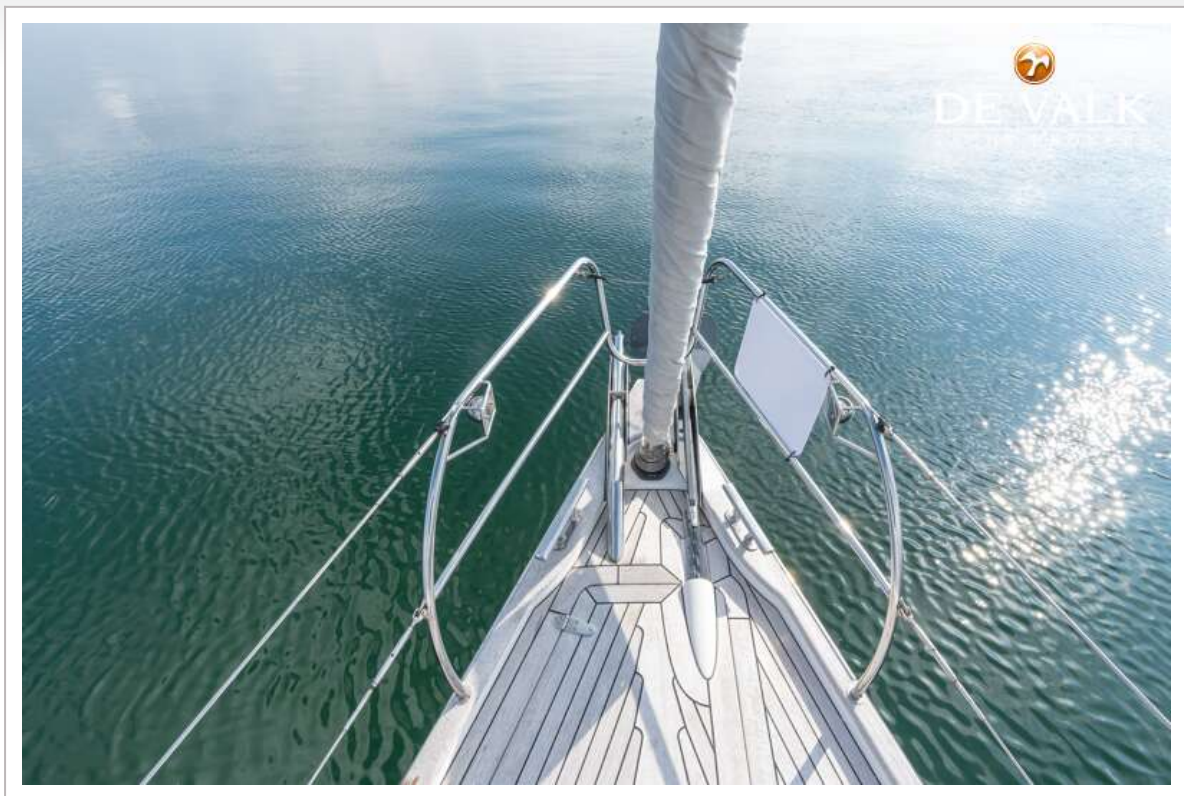
HALLBERG RASSY 412



HALLBERG RASSY 412



HALLBERG RASSY 412



HALLBERG RASSY 412



HALLBERG RASSY 412



HALLBERG RASSY 412



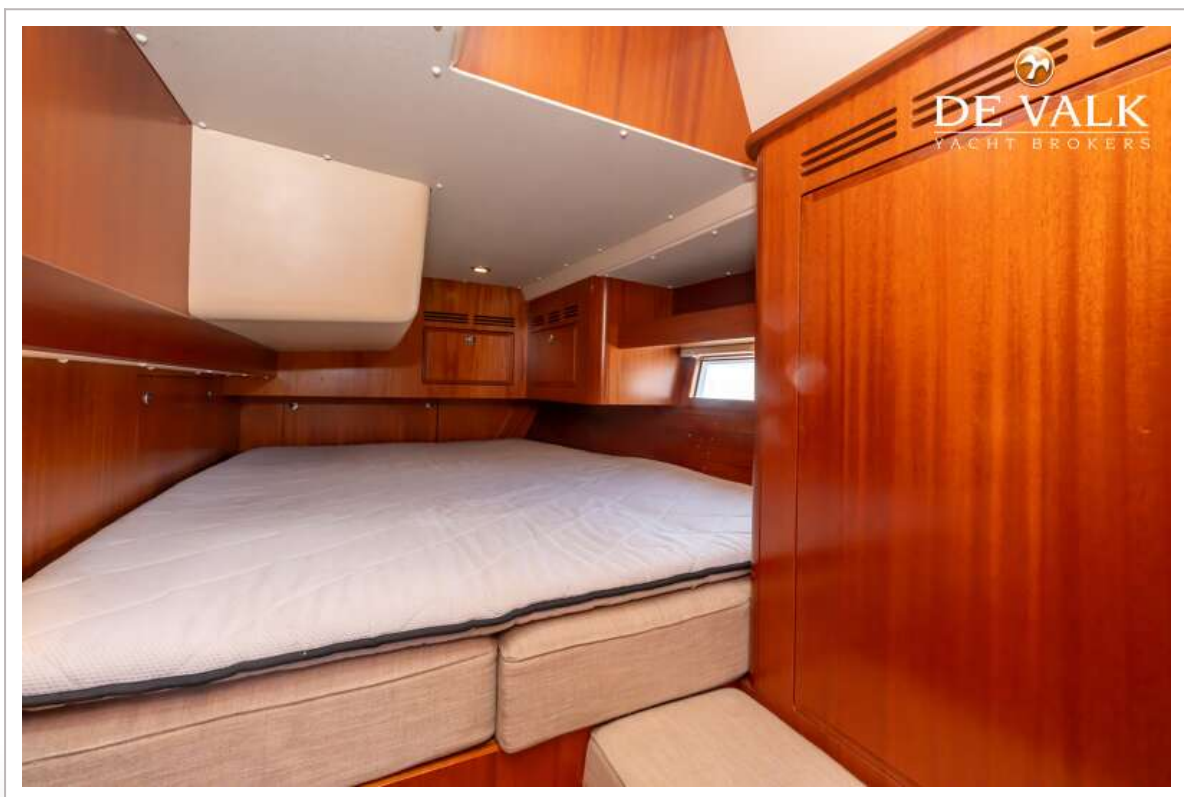
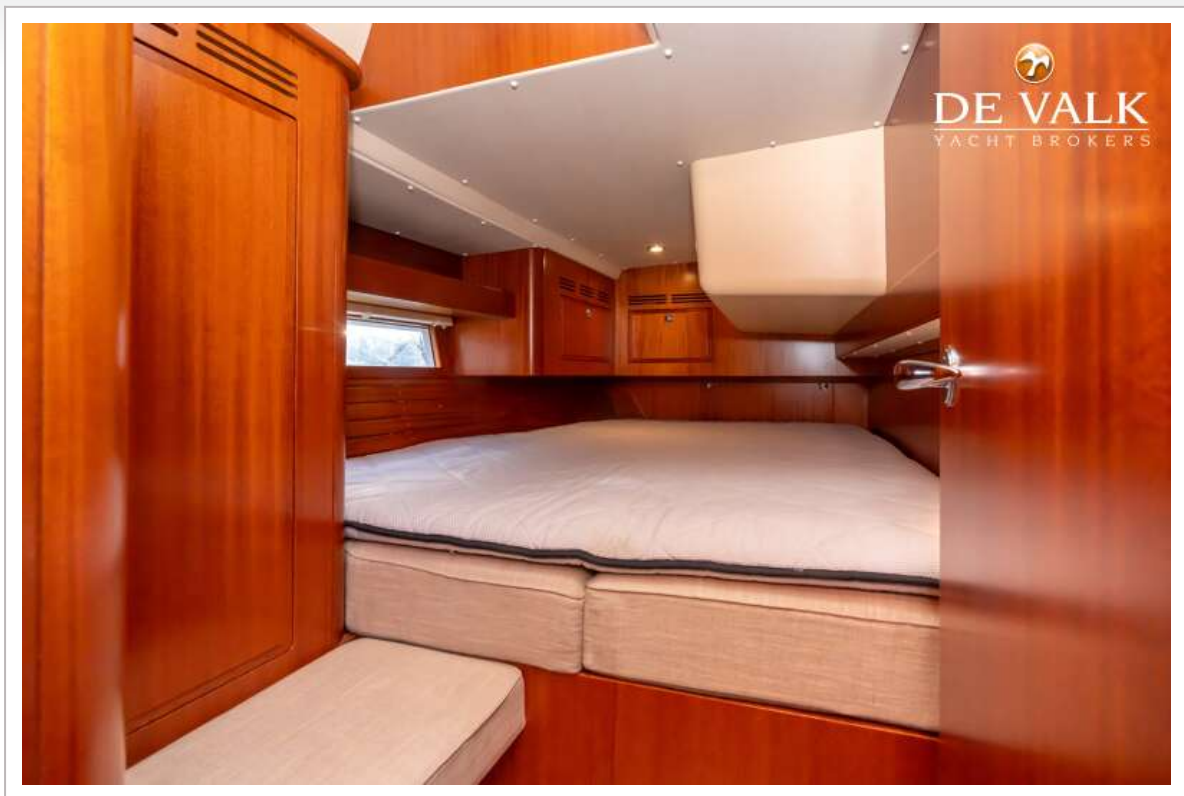
HALLBERG RASSY 412



HALLBERG RASSY 412



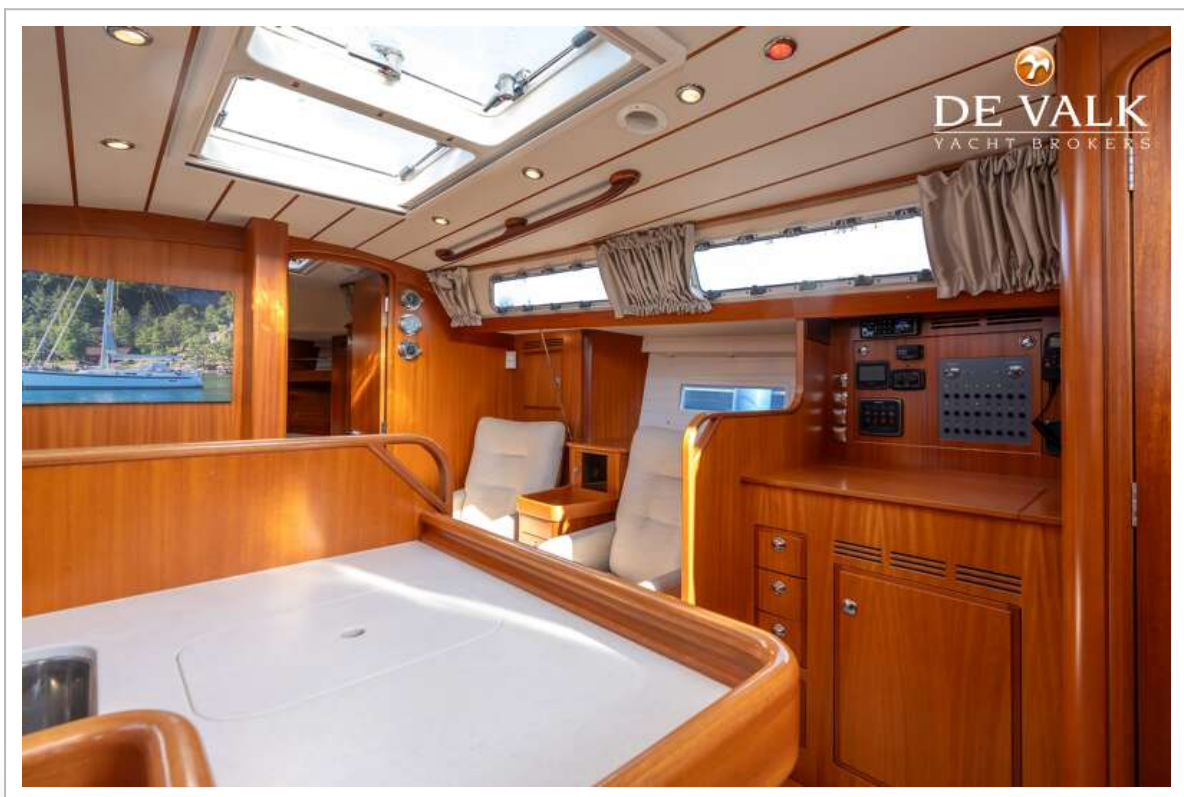
HALLBERG RASSY 412



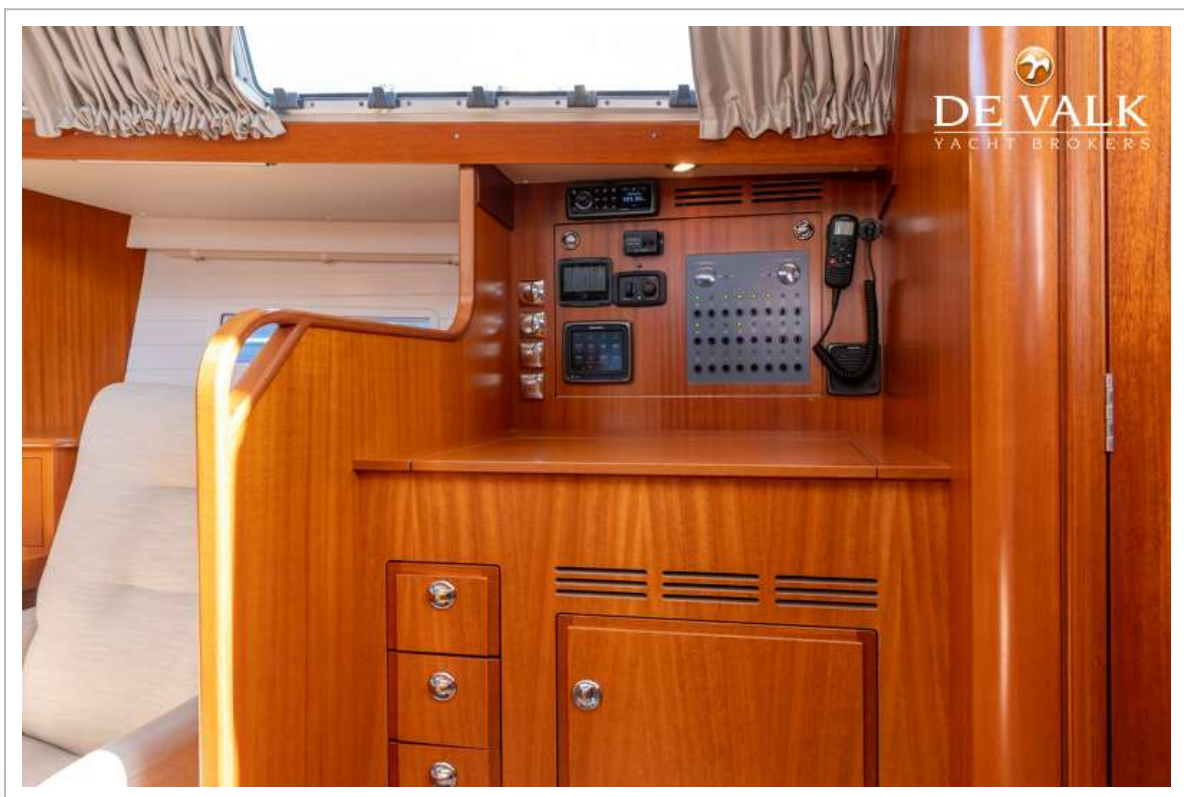
HALLBERG RASSY 412



HALLBERG RASSY 412



HALLBERG RASSY 412



HALLBERG RASSY 412



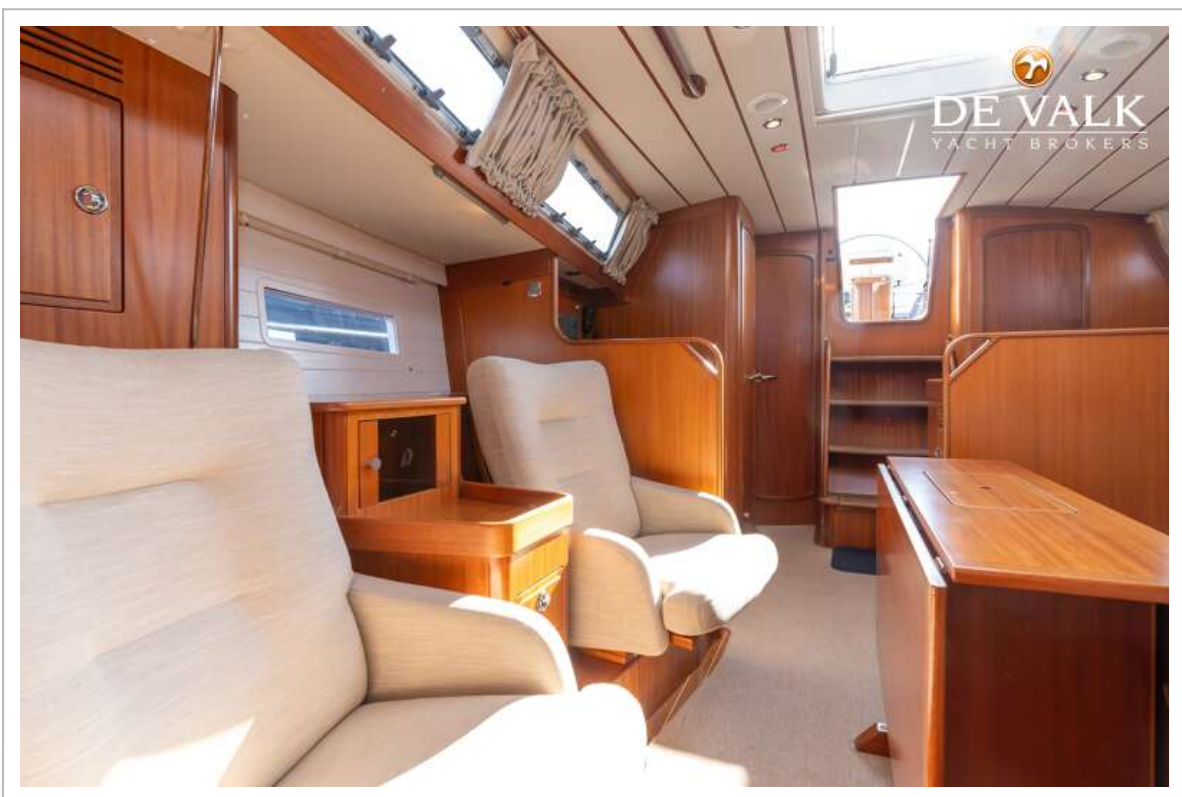
HALLBERG RASSY 412



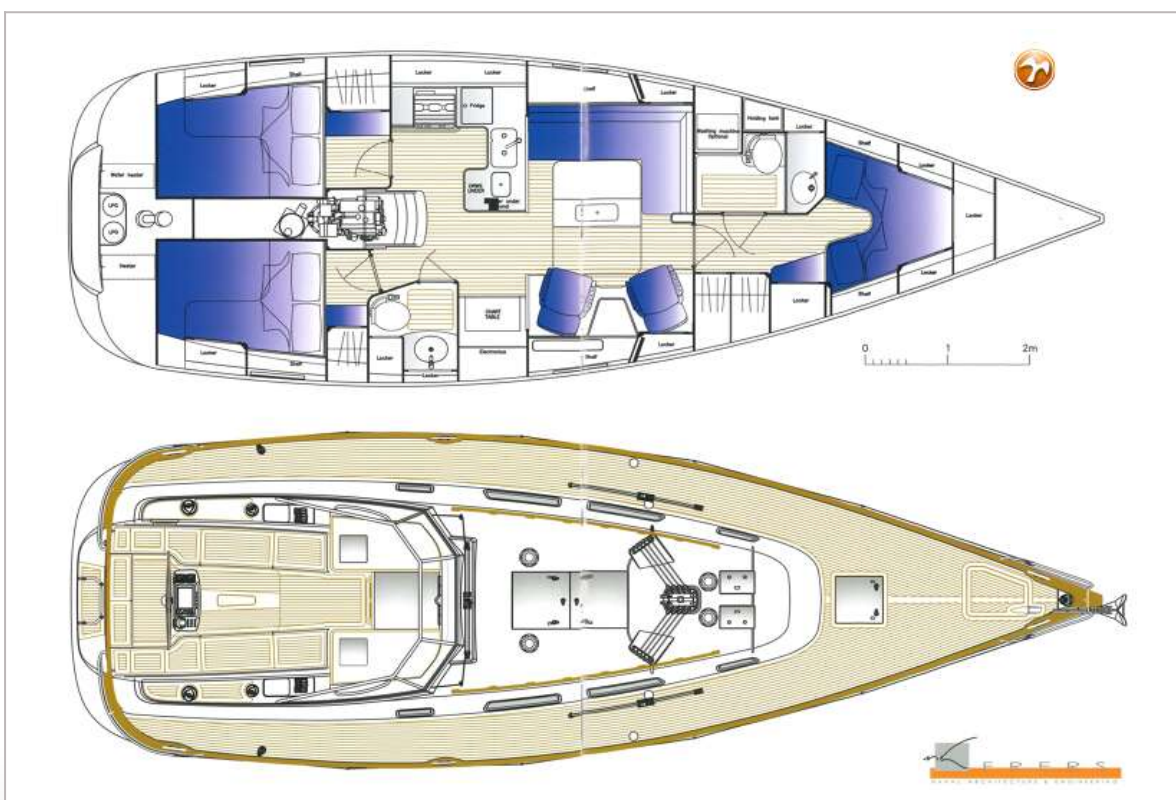
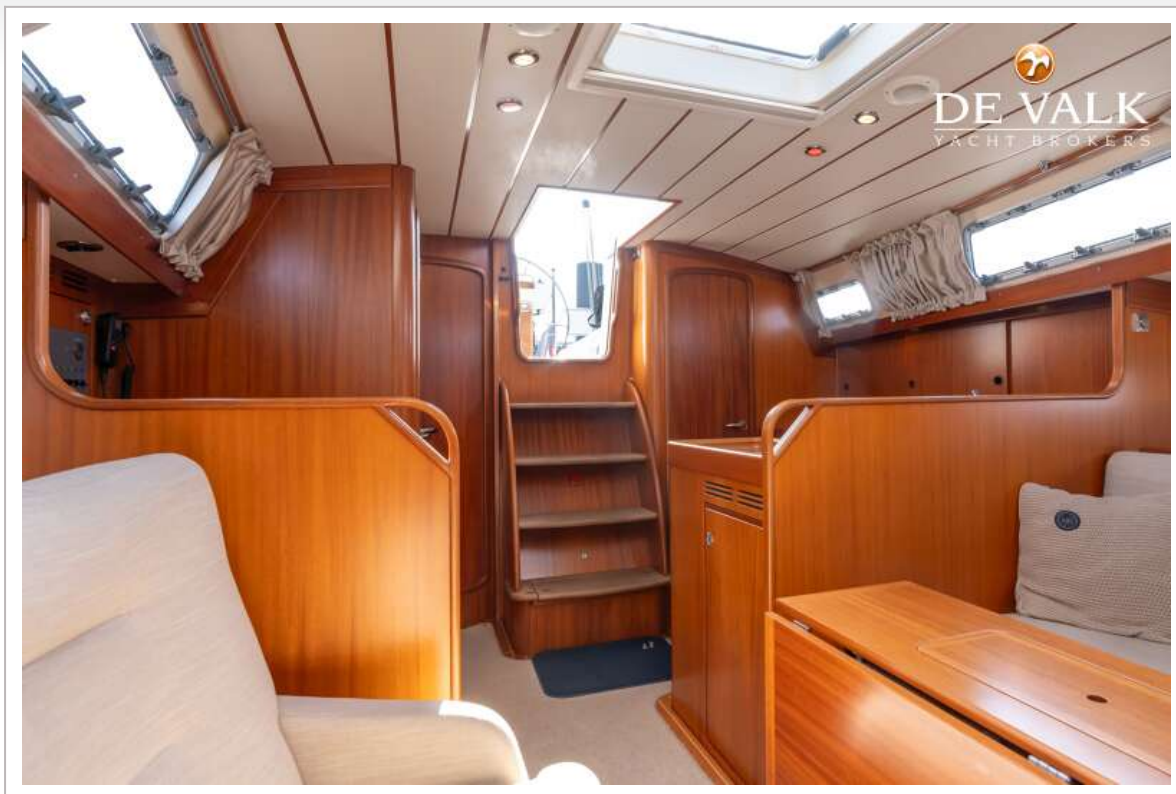
HALLBERG RASSY 412



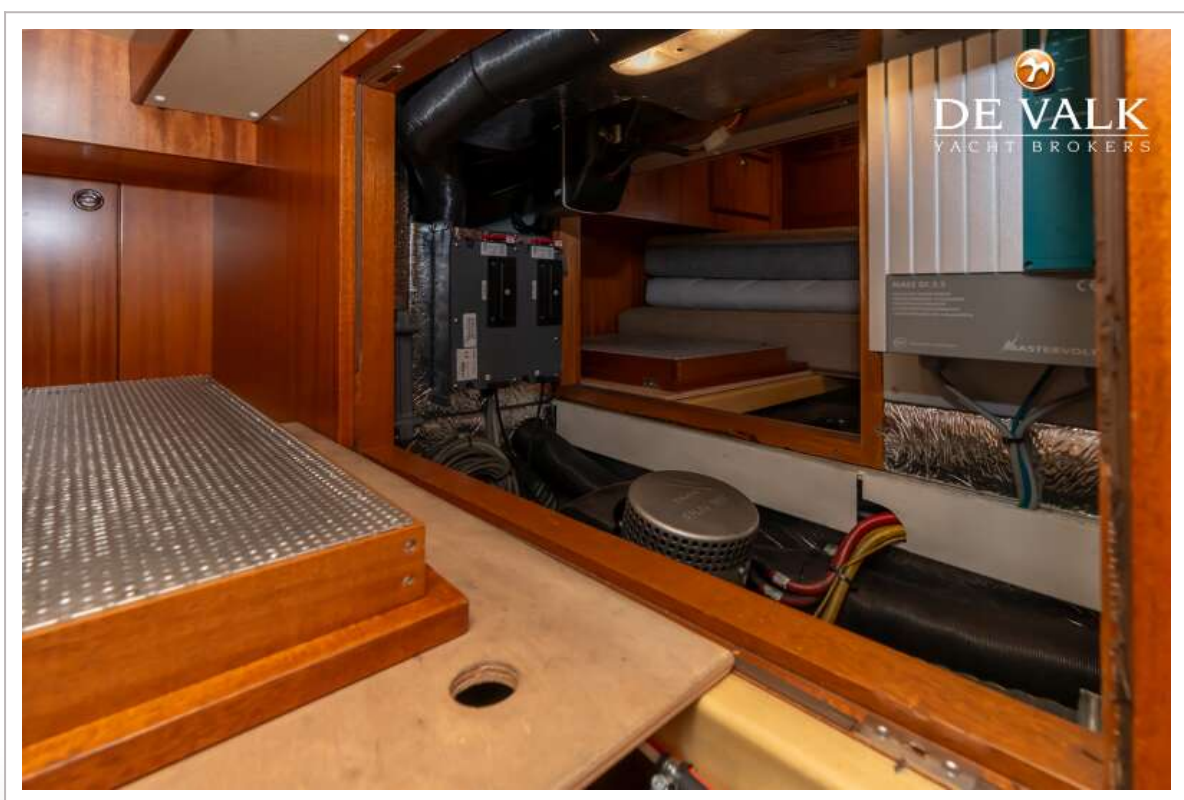
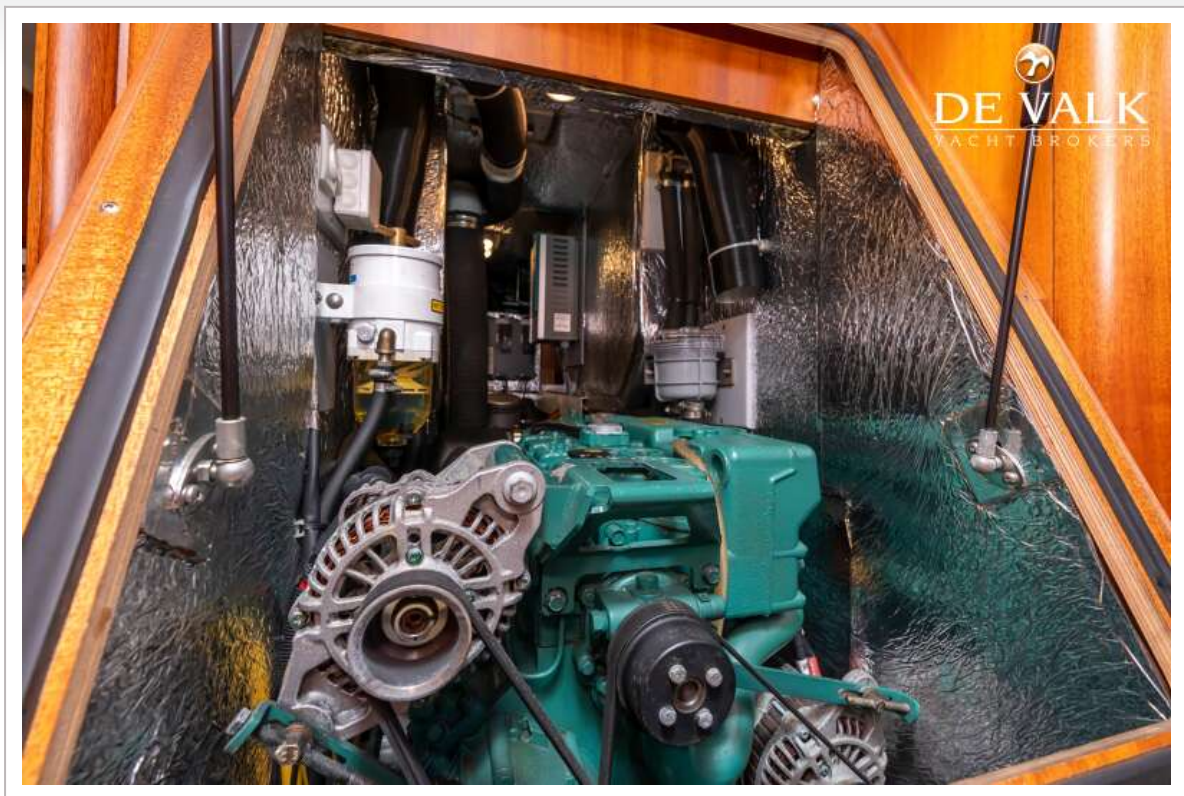
HALLBERG RASSY 412



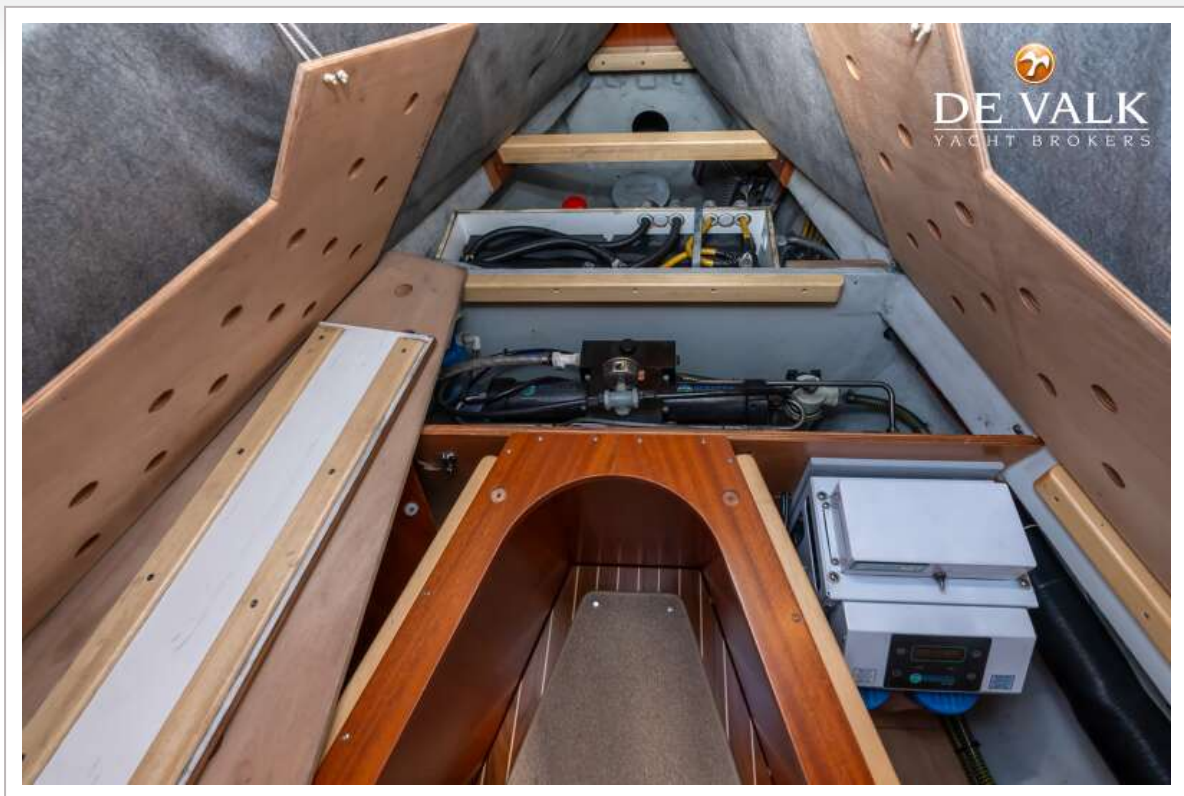
HALLBERG RASSY 412



HALLBERG RASSY 412



HALLBERG RASSY 412



HALLBERG RASSY 412

Hallberg-Rassy 412

Design: Germán Frers

STANDARD SPECIFICATION
STANDARD-BESCHREIBUNG
STANDARD-BESCHRIJVING

Main data:

Designer	Germán Frers
Hull length	12.61 m 41' 5"
Waterline at rest	11.50 m 37' 9"
Beam	4.11 m 13' 6"
Crack, empty load	1.98 m 6' 7"
Displacement,	11.1 t 24 400 lbs
empty standard load	
Lead ball	4.0 t 8 830 lbs
Sail area with genoa	90.1 m ² 970 ft ²
Mast over water, ex Windse	19.05 m 62' 6"
Headroom saloon	1.98 m 6' 5"
Engine, Volvo Penta	D2-75 / 1300
Number of cylinders	4
Cylinder volume	3.2 liter
Power at cranks shaft	55 kW / 75 HP
Fresh water tanks, approx.	220 l 58 USG
Diesel tanks, approx.	340 l 90 USG

*Also available as a shallow draught version upon request.





