



DE VALK  
YACHT BROKERS



HOUSEBOAT 19.50 METER



DE VALK  
YACHT BROKERS

# HOUSEBOAT 19.50 METER

## BROKER'S COMMENTS

Comfortable houseboat contains everything you need to enjoy living and sailing on the water. The houseboat has 1 large bedroom and 1 small bedroom, a bathroom, living room, kitchen and a spacious terrace. This ship from 1923 was converted into a houseboat in 2020-2022 and is fully self-sufficient. The installations are all properly installed by official companies. A surface thickness measurement was carried out by an expert in 2020, the ship is in very good condition. With bow thruster and camera the ship is easy to steer and you do need a boating license. Ship has a heavy stud pole.

*Jeanne Stukstette*

## SPECIFICATIONS

<b>Dimensions</b>	19.70 x 4.56 x 0.95 (m)	<b>Builder</b>	SCHEEPSWERF DE OVERTOOM
<b>Built</b>	2020	<b>Cabins</b>	2
<b>Material</b>	Steel	<b>Berths</b>	2
<b>Engine(s)</b>	1 x JOHN DEERE diesel	<b>Hp/Kw</b>	175.00 (hp), 128.80 (kw)
<b>Asking price</b>	Under Offer (VAT )	<b>Lying</b>	at sales office

## CONTACT

<b>Sales office</b>	De Valk Limburg	<b>Telephone</b>	+31 630372559
<b>Address</b>	Schippersveld 3 6019 DE Wessem NL	<b>E-mail</b>	limburg@devalk.nl

## DISCLAIMER

These particulars are given in good faith as supplied but cannot be guaranteed.



# HOUSEBOAT 19.50 METER

## GENERAL

<b>Model</b>	HOUSEBOAT 19.50 METER
<b>Type</b>	motor yacht
<b>LOA (m)</b>	19,70
<b>Beam (m)</b>	4,56
<b>Draft (m)</b>	0,95
<b>Headroom (m)</b>	2,30
<b>Year built</b>	2020
<b>Builder</b>	SCHEEPSWERF DE OVERTOOM
<b>Country</b>	The Netherlands
<b>Displacement (t)</b>	30
<b>Hull material</b>	steel
<b>Hull colour</b>	black
<b>Hull thickness (mm)</b>	(5mm = 2020 report available with thickness measurements)
<b>Keel type</b>	long keel
<b>Dorades</b>	4
<b>Window frame</b>	polymer
<b>Window material</b>	double glazing Safetyglass - veiligheidsglas
<b>Insulation</b>	rockwool
<b>Fuel tank (litre)</b>	steel 7500 LI
<b>Level indicator (fuel tank)</b>	yes
<b>Fuel daytank (litre)</b>	steel 50 LI
<b>Level indicator (daytank)</b>	Automatic pump that pumps from Fuel tank
<b>Freshwater tank (litre)</b>	polyethylene 2x500 LI
<b>Level indicator (freshwater)</b>	yes
<b>Blackwater tank (litre)</b>	polyethylene 245 LI
<b>Level indicator (blackwater)</b>	Votronic
<b>Blackwater tank extraction</b>	deck extraction + pump
<b>Wheel steering</b>	hydraulic + electric
<b>More info on hull</b>	Expert report 2021 with thickness measurement



# HOUSEBOAT 19.50 METER

## ACCOMMODATION

Cabins	2
Berths	2
Saloon	yes
Headroom saloon (m)	2,3
Heating	electric 220V Webasto
Air-conditioning	reverse cycle airco Webasto
Dining room	yes
Sliding door to cockpit	yes
Countertop	plastic
Sink	stainless steel
Cooker	induction 4x
Oven	yes
Microwave/oven combi	Etna
Fridge	Etna
Freezer	Etna (in Fridge)
Hot water system	220V Quick nautic boiler 80 li (B3)
Water pressure system	electrical
Owners cabin	double bed
Bed length (m)	2x2.20
Wardrobe	hanging and shelves
Bathroom	separate
Toilet	separate
Toilet system	electric
Wash basin	in the bathroom
Shower	separate
Guest cabin 1	yes

## MACHINERY

No of engines	1
Make	JOHN DEERE



# HOUSEBOAT 19.50 METER

HP	175
kW	128.80
Fuel	diesel
Engine hours	2553
Drive	shaft
Bowthruster	electric
Shaft lubrication	grease Pump
Electrical installation	yes
Generator	dry exhaust
Batteries	yes
Start battery	yes
Service battery	yes
Bowthruster battery	yes
Battery monitor	Victron Energy
Battery charger	Mastervolt 24/75
Inverter	Victron Phoenix 24V 3000W
Shorepower	with cable
Extra info	spud pole Ankreo (diameter 300mm, 7m deep)
Extra info	Motor number CD6068C036584

## NAVIGATION

Depth sounder/log	yes
Rudder angle indicator	yes
Camera	1x Backside
Navigation lights	yes

## EQUIPMENT

Fixed hardtop	yes
Deck wash	yes
Dinghy	rigid inflatable (optional) Walker bay Rid 310R
Outboard	(optional) 3.5 pk



# HOUSEBOAT 19.50 METER

<b>Deck crane</b>	manual 900kg
<b>Sea railing</b>	yes
<b>Railing side opening gates</b>	yes
<b>Horn</b>	yes
<b>Mooring lines</b>	yes
<b>Spare parts</b>	yes



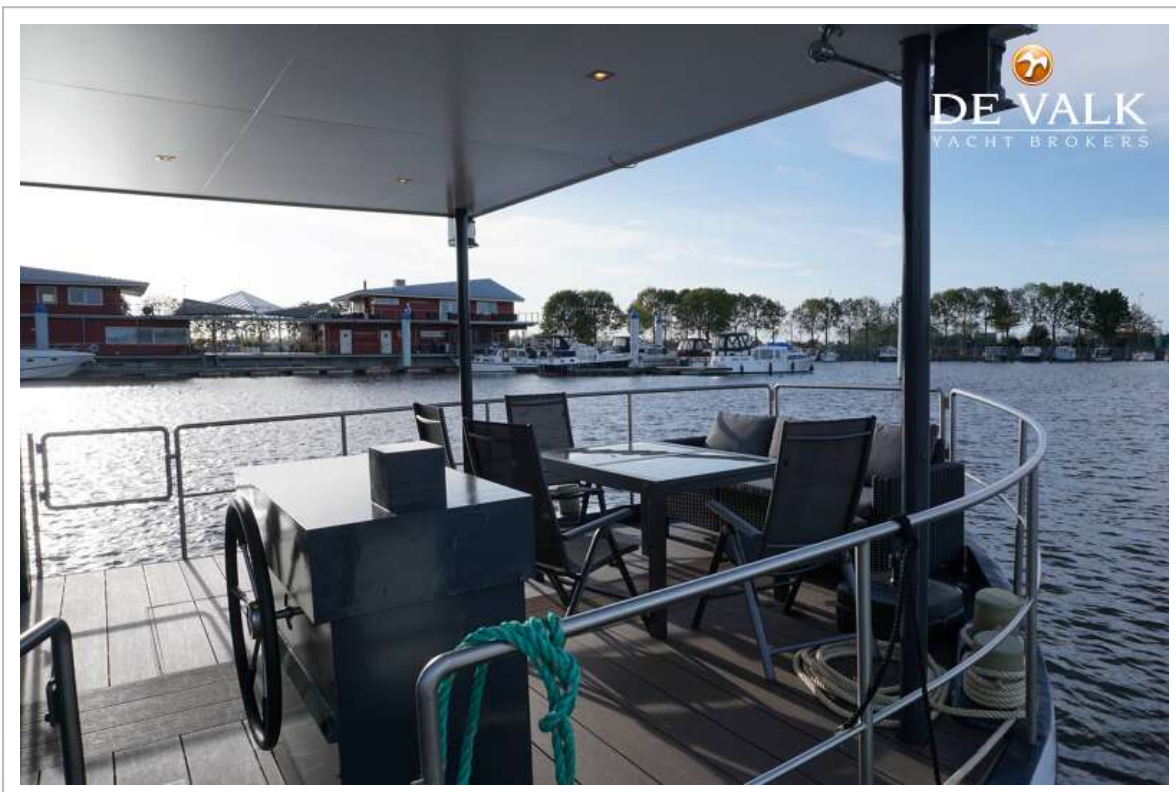
# HOUSEBOAT 19.50 METER



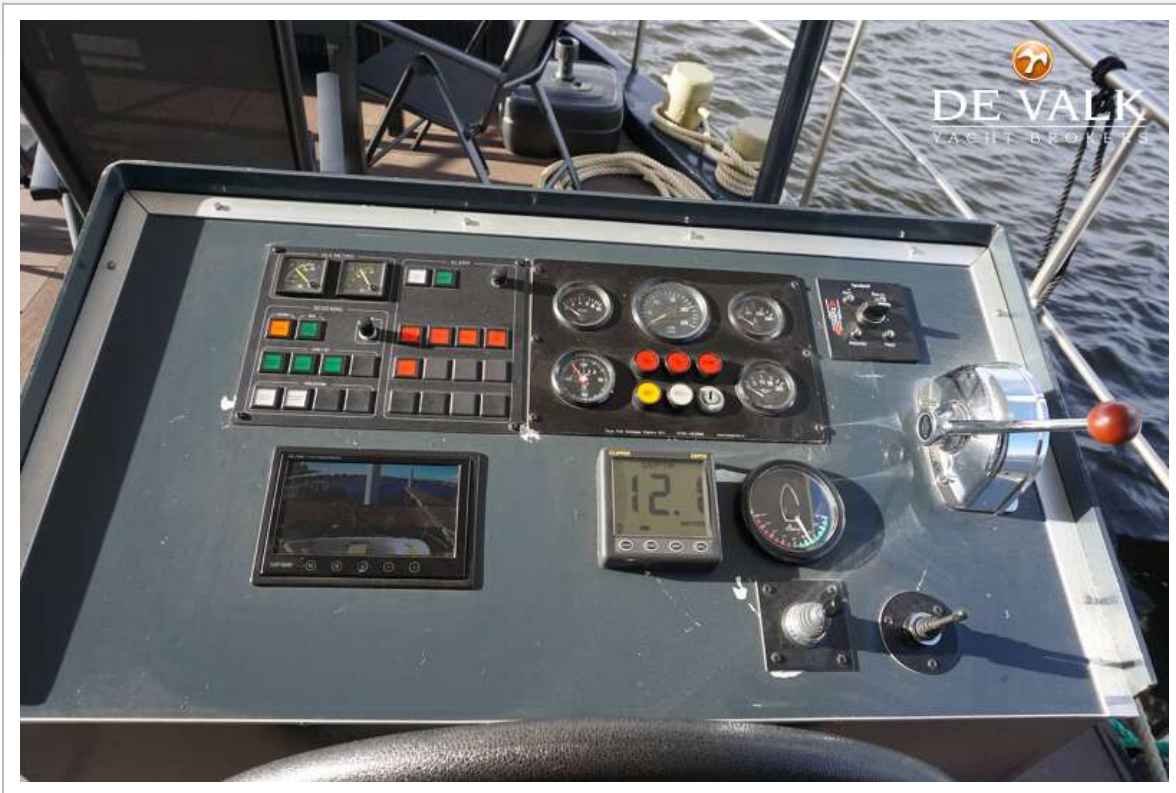
# HOUSEBOAT 19.50 METER



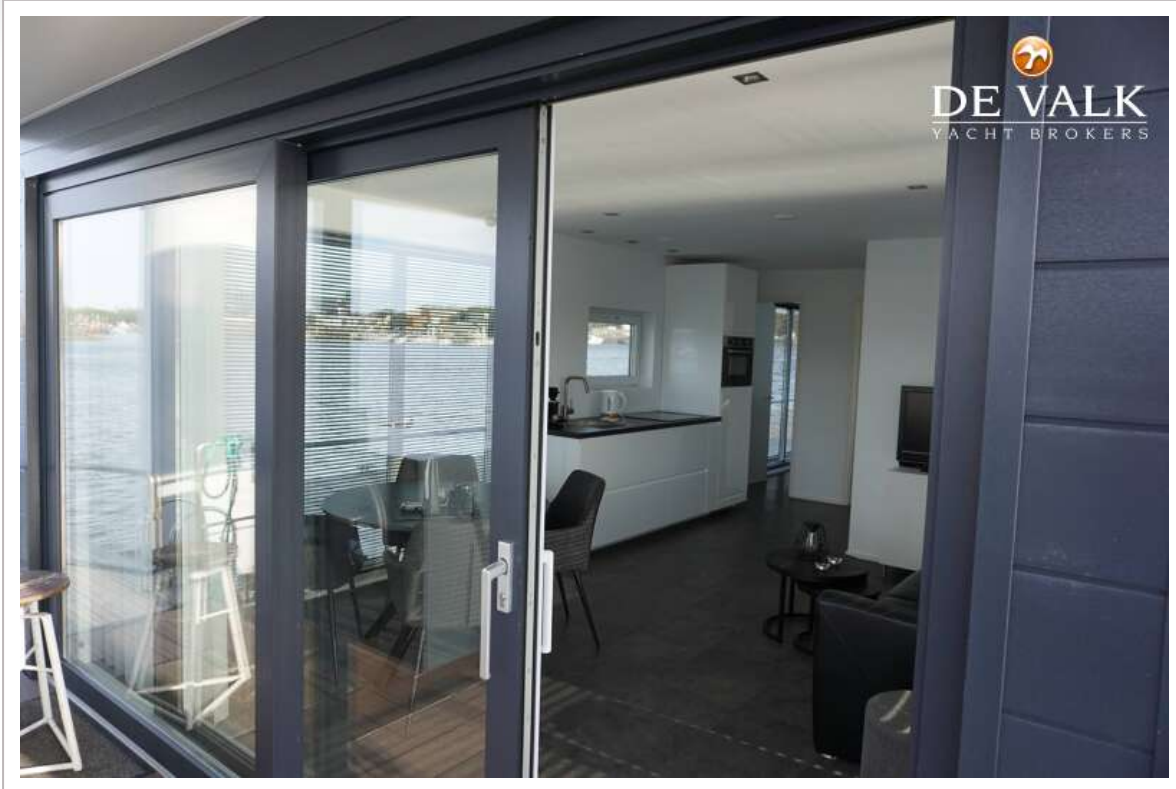
# HOUSEBOAT 19.50 METER



# HOUSEBOAT 19.50 METER



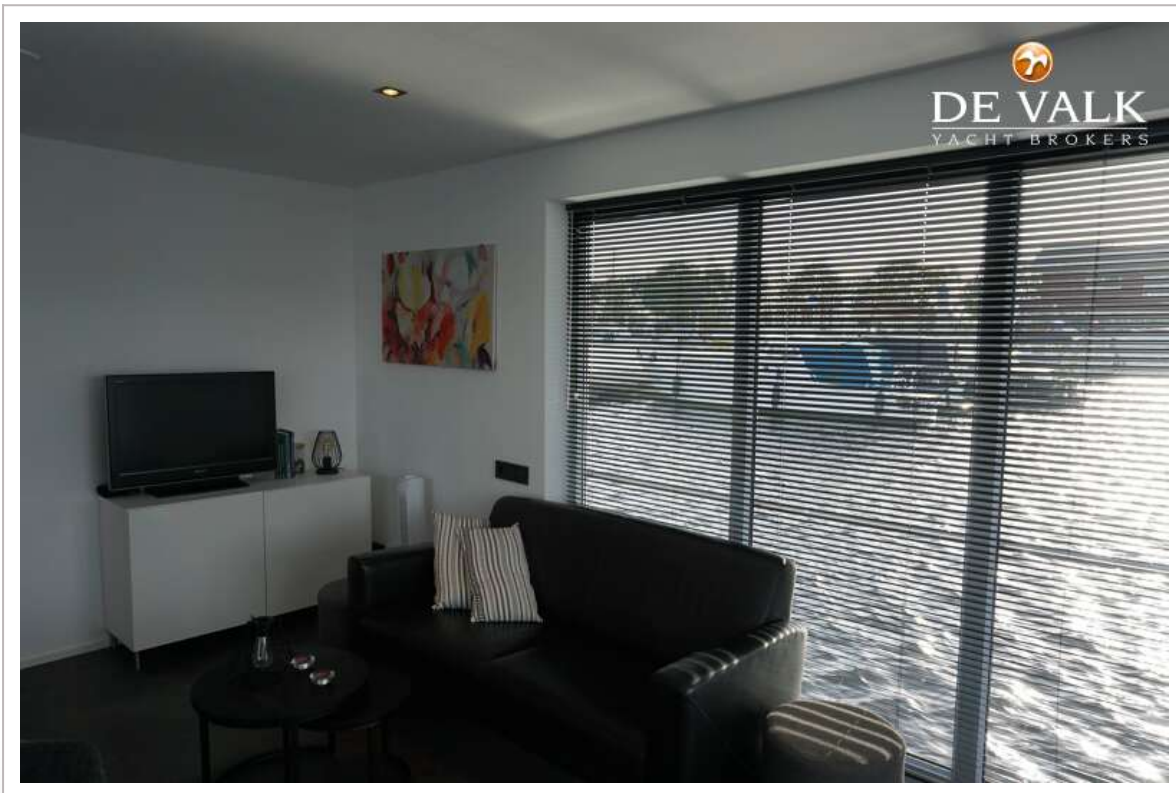
# HOUSEBOAT 19.50 METER



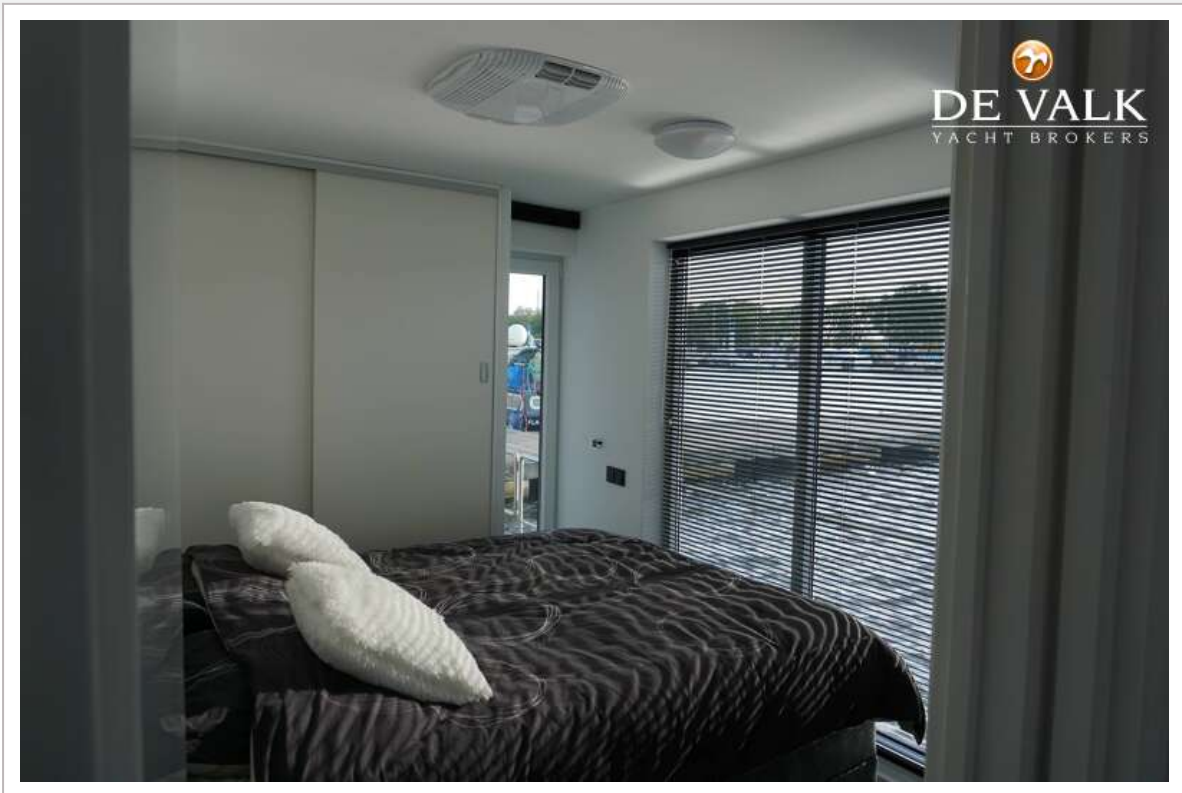
# HOUSEBOAT 19.50 METER



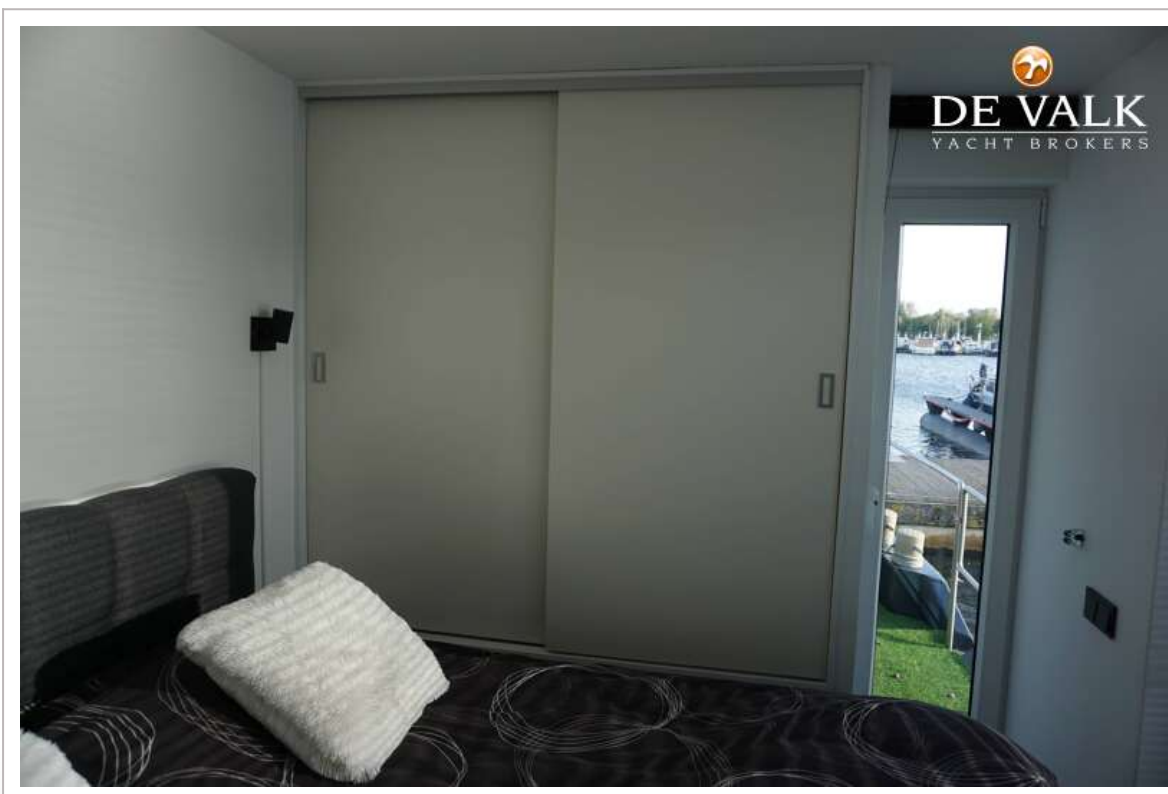
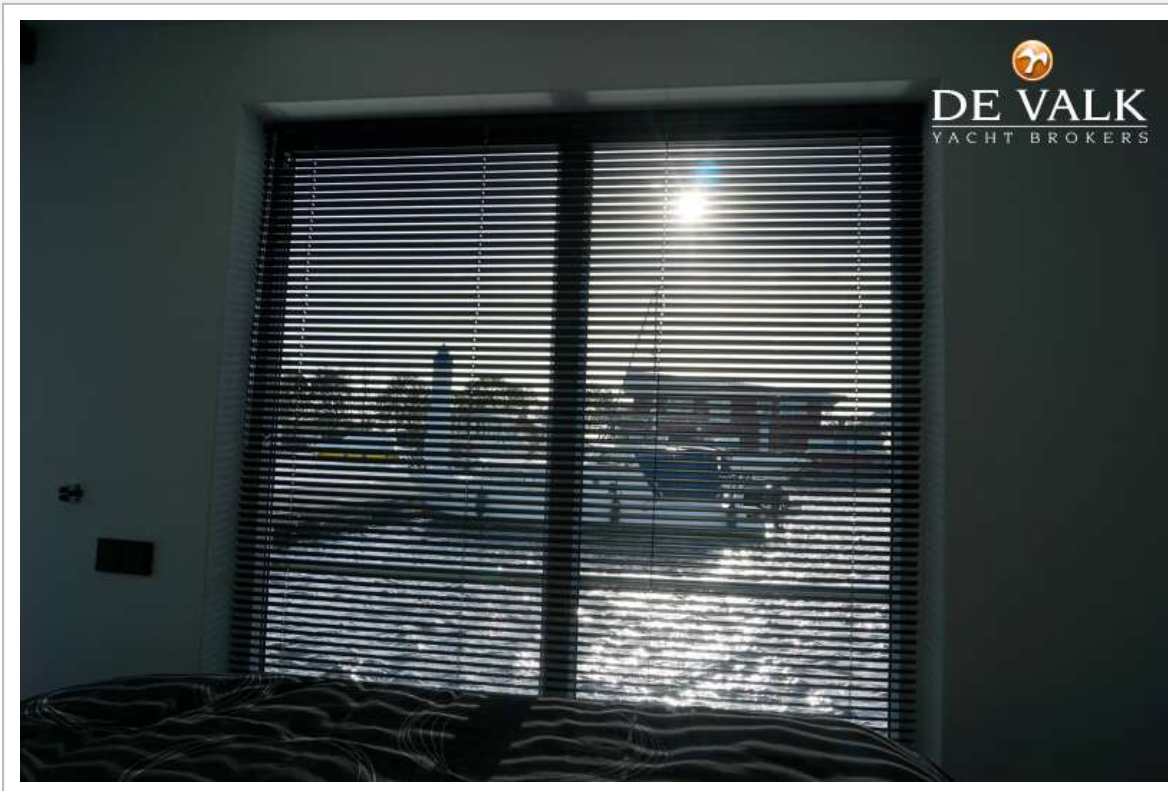
# HOUSEBOAT 19.50 METER



# HOUSEBOAT 19.50 METER



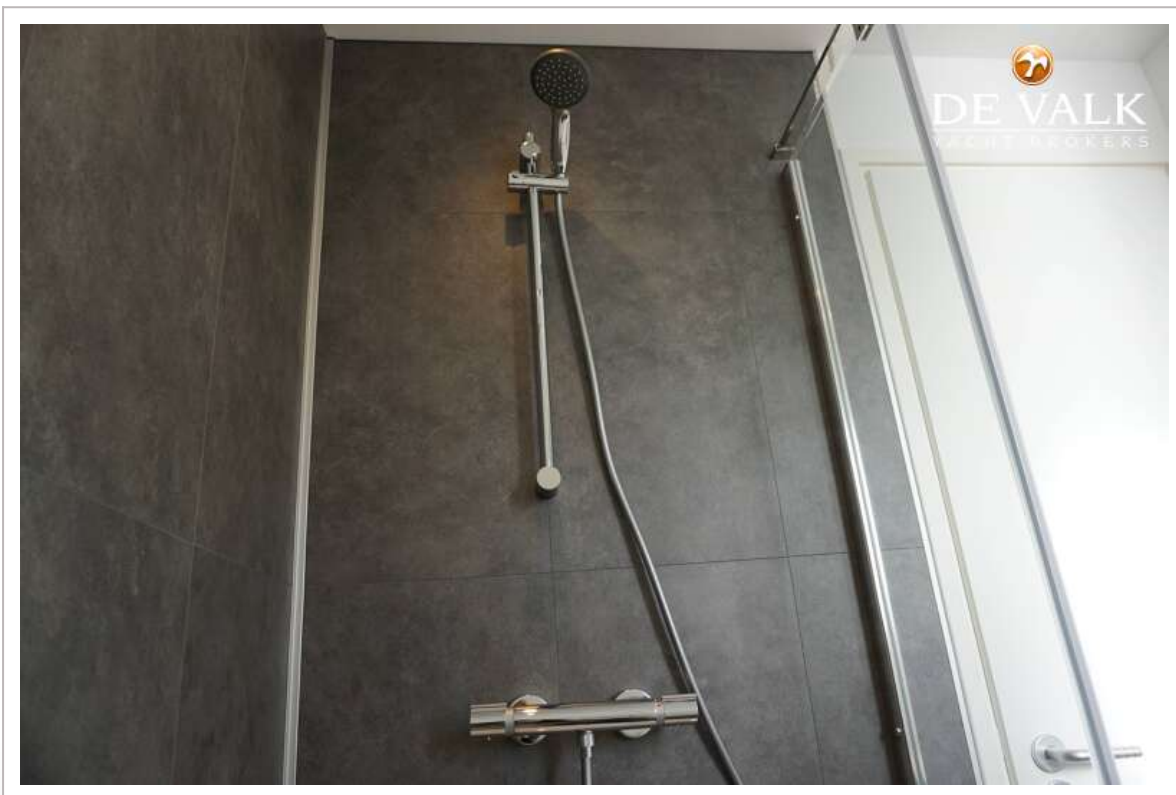
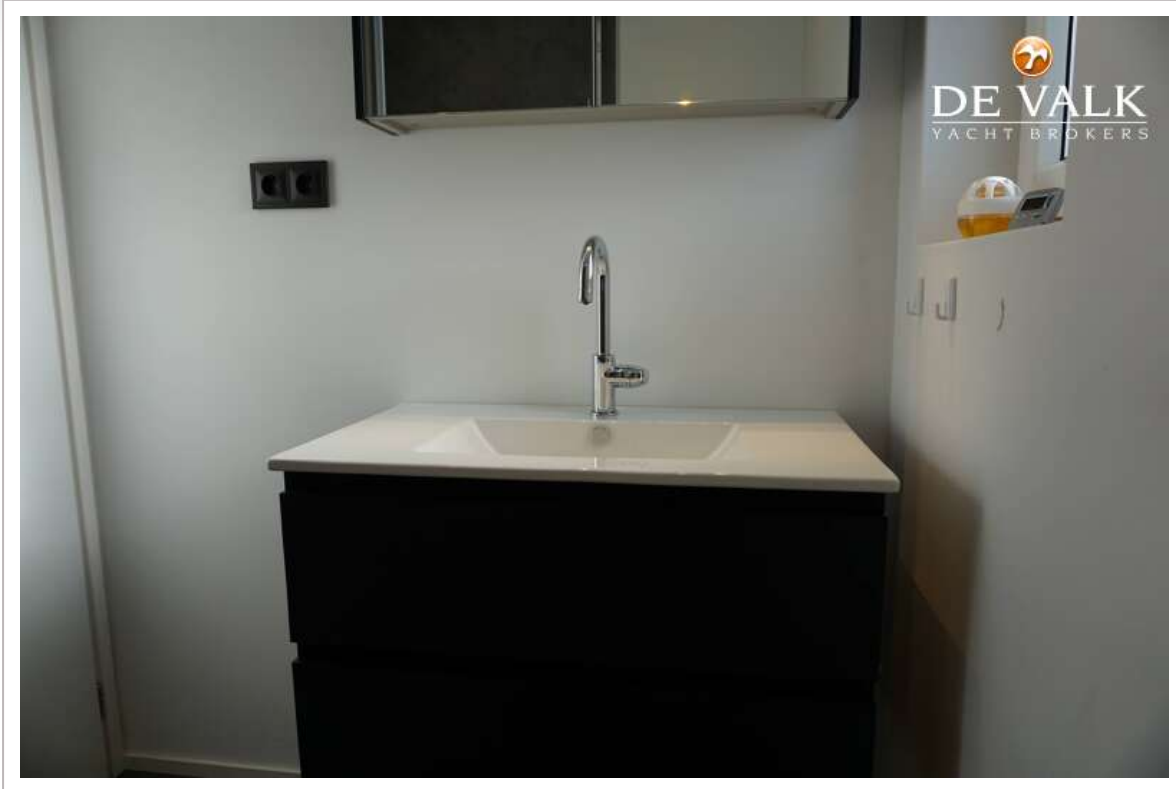
# HOUSEBOAT 19.50 METER



# HOUSEBOAT 19.50 METER



# HOUSEBOAT 19.50 METER



# HOUSEBOAT 19.50 METER



# HOUSEBOAT 19.50 METER



# HOUSEBOAT 19.50 METER

