



REGAL 3060 COMMODORE



DE VALK
YACHT BROKERS

REGAL 3060 COMMODORE

BROKER'S COMMENTS

The Regal 3060 Commodore is an excellent choice if you are looking for a versatile weekend and vacation cruiser. Regal is known for luxury, speed, comfort and of course that is reflected in this Regal 3060 Commodore named "Alpha". The "Alpha" was recently provided with a new antifouling layer and is therefore ready for next season! Are you looking for a nice sport cruiser? Then make an appointment soon to view this Regal 3060 Commodore.

Jochem Heijermans

SPECIFICATIONS

Dimensions	9.50 x 3.20 x 0.90 (m)	Builder	Regal
Built	2001	Cabins	1
Material	GRP	Berths	6
Engine(s)	2 x Volvo Penta 5.0 G.I. petrol	Hp/Kw	2 x 260.00 (hp), 191.36 (kw)
Asking price	sold (VAT)	Lying	elsewhere / Not at sales office

CONTACT

Sales office	De Valk Belgium	Telephone	+32 586 80 218
Address	1401 PT Nieuwpoort BE	E-mail	belgium@devalk.nl

DISCLAIMER

These particulars are given in good faith as supplied but cannot be guaranteed.



REGAL 3060 COMMODORE

GENERAL

Model	REGAL 3060 COMMODORE
Type	motor yacht
LOA (m)	9,50
Beam (m)	3,20
Draft (m)	0,90
Headroom (m)	1,80
Year built	2001
Builder	Regal
Country	U.S.A.
Displacement (t)	5
CE norm	B
Hull material	GRP
Hull colour	white
Hull shape	deep-V
Superstructure material	GRP
Rubbing strake	stainless steel
Deck material	GRP
Deck finish	non-skid moulded in
Superstructure deck finish	non-skid moulded in
Cockpit deck finish	non-skid moulded in
Antifouling (year)	2023
Deckhatch	yes
Portholes	aluminium
Radar arch	non collapsible
Fuel tank (litre)	stainless steel 2x 275
Level indicator (fuel tank)	yes
Freshwater tank (litre)	Circa 120
Level indicator (freshwater)	yes
Blackwater tank (litre)	80
Blackwater tank extraction	deck extraction + pump



REGAL 3060 COMMODORE

Wheel steering hydraulic

ACCOMMODATION

Cabins	1
Berths	6
Floor	carpet
Open cockpit	yes
Saloon	yes
Headroom saloon (m)	1,85
Air-conditioning	reverse cycle airco Needs to be serviced
Dinette	yes
Dinette to convert into berth	yes
Opening door to cockpit	yes
Galley	yes
Sink	stainless steel
Cooker	electric 2 burner
Microwave/oven combi	Brabantia
Freezer	2x
Hot water system	220V + engine
Water pressure system	electrical
Owners cabin	double bed
Wardrobe	drawers and shelves
Bathroom	shared
Toilet	shared
Toilet system	electric
Wash basin	in the bathroom
Shower	shared
Guest cabin 1	double bed

MACHINERY

No of engines	2
---------------	---



REGAL 3060 COMMODORE

Make	Volvo Penta
Type	5.0 G.I.
HP	260
kW	191.36
Fuel	petrol
Year installed	2001
Maximum speed (kn)	30
Cruising speed (kn)	25
Engine cooling system	seawater
Drive	Z-drive
Engine controls	bowden cable
Gearbox	mechanical
Exhaust	watercooled
Propeller type	fixed Duo-prop
Propeller shaft material	steel
Electric bilge pump	yes
Start battery	2x 85 Ah (2018)
Service battery	1x 140Ah (2018)
Battery charger	Mastervolt 12V/35Ah
Shorepower	with cable
Trimtabs	yes

NAVIGATION

Compass	yes
Depth sounder	yes
Log	yes
VHF	Lowrance (2018)
Navigation lights	yes

EQUIPMENT

Cockpit cover	(2018)
---------------	--------



REGAL 3060 COMMODORE

Cockpit cushions	yes
Cockpit table	yes
Boarding ladder	stainless steel
Deck shower	W+C
Anchor	yes
Windlass	electrical
Capstan	yes
Sea railing	stainless steel
Wiper	yes
Horn	electric
Fenders	yes
Mooring lines	yes
Radio	yes
Sub-woofer	yes
Cockpit speakers	yes
Speakers in salon	yes



REGAL 3060 COMMODORE



REGAL 3060 COMMODORE



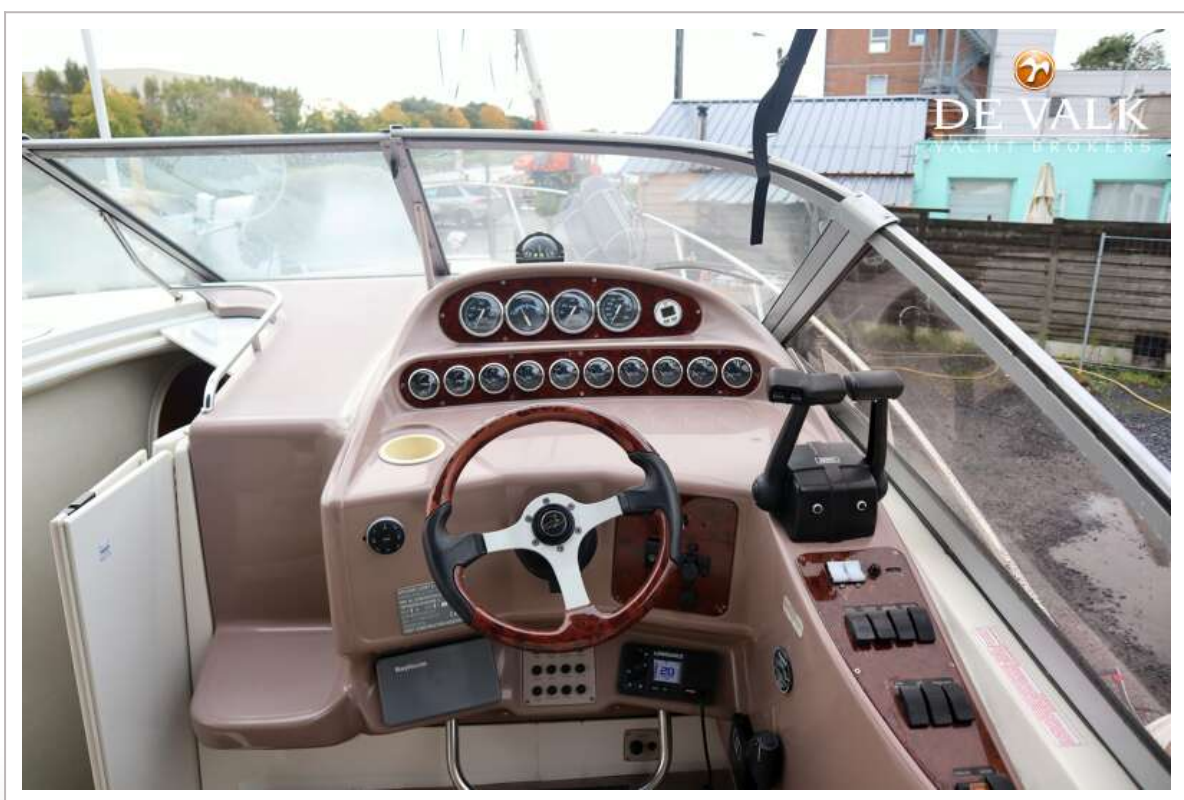
REGAL 3060 COMMODORE



REGAL 3060 COMMODORE



REGAL 3060 COMMODORE



REGAL 3060 COMMODORE



REGAL 3060 COMMODORE



REGAL 3060 COMMODORE



REGAL 3060 COMMODORE



REGAL 3060 COMMODORE



REGAL 3060 COMMODORE



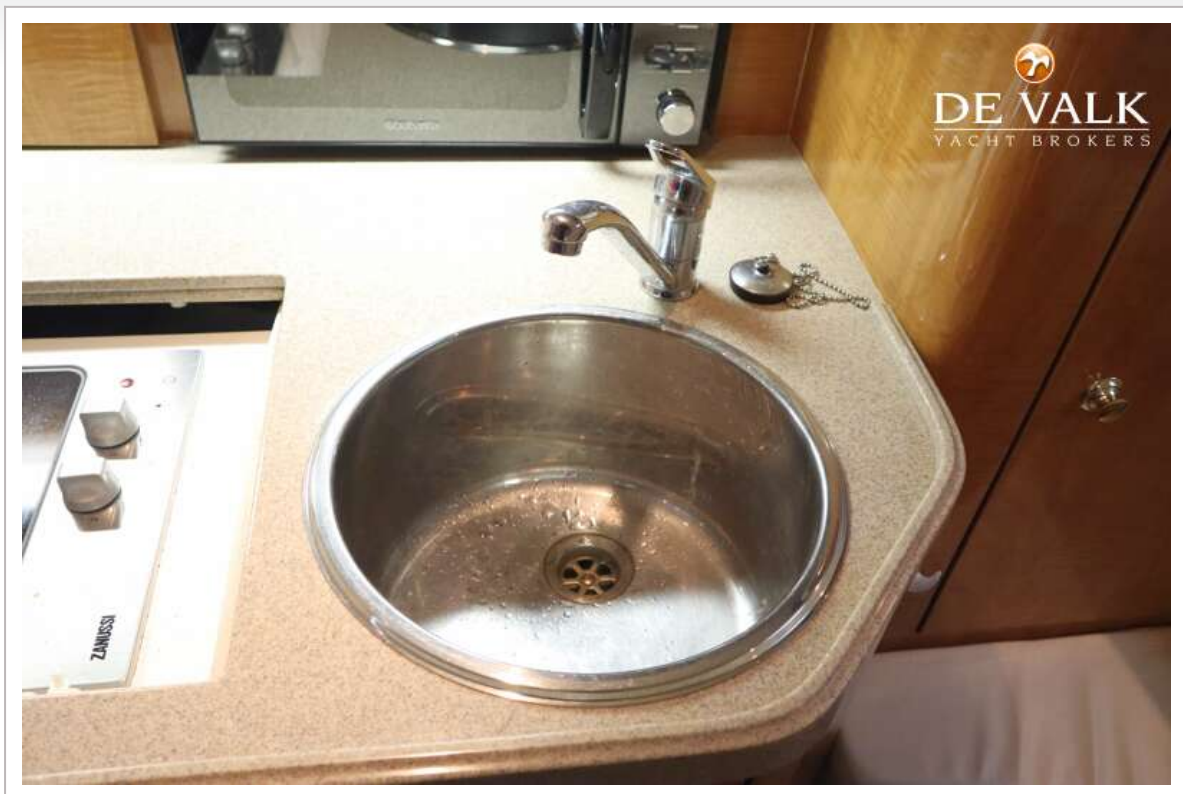
REGAL 3060 COMMODORE



REGAL 3060 COMMODORE



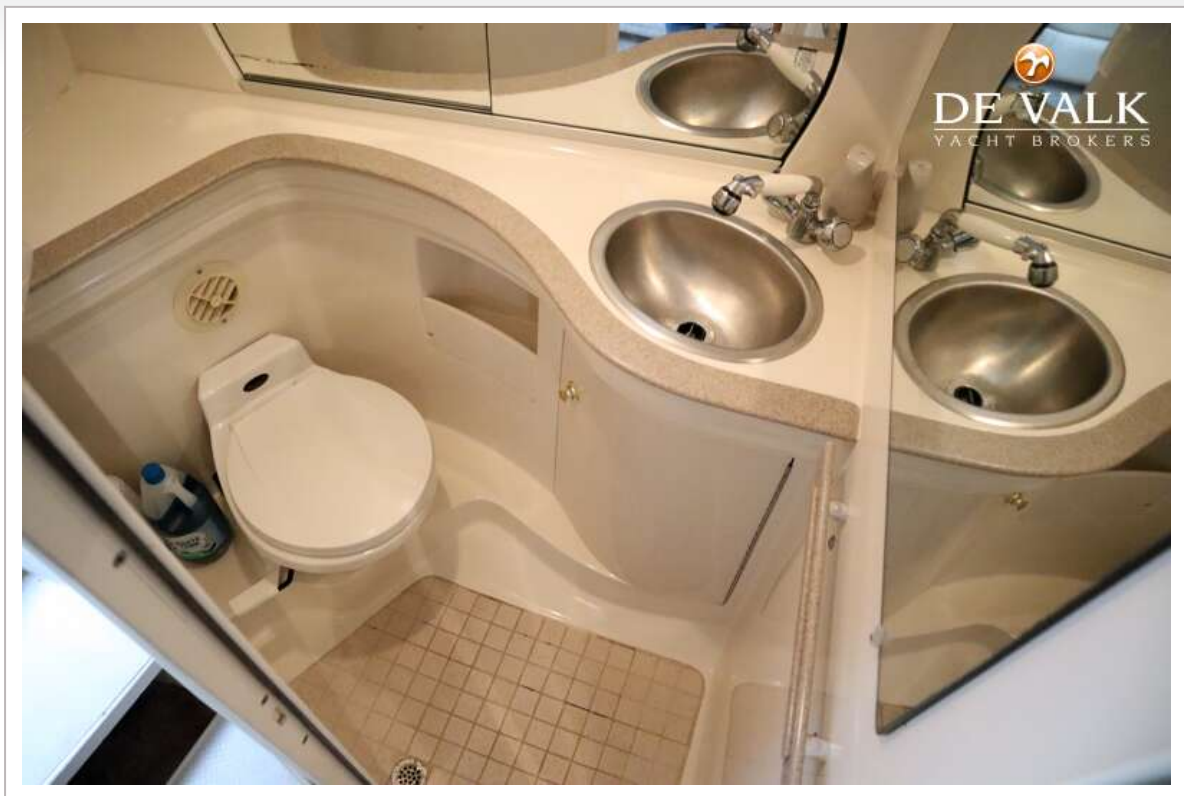
REGAL 3060 COMMODORE



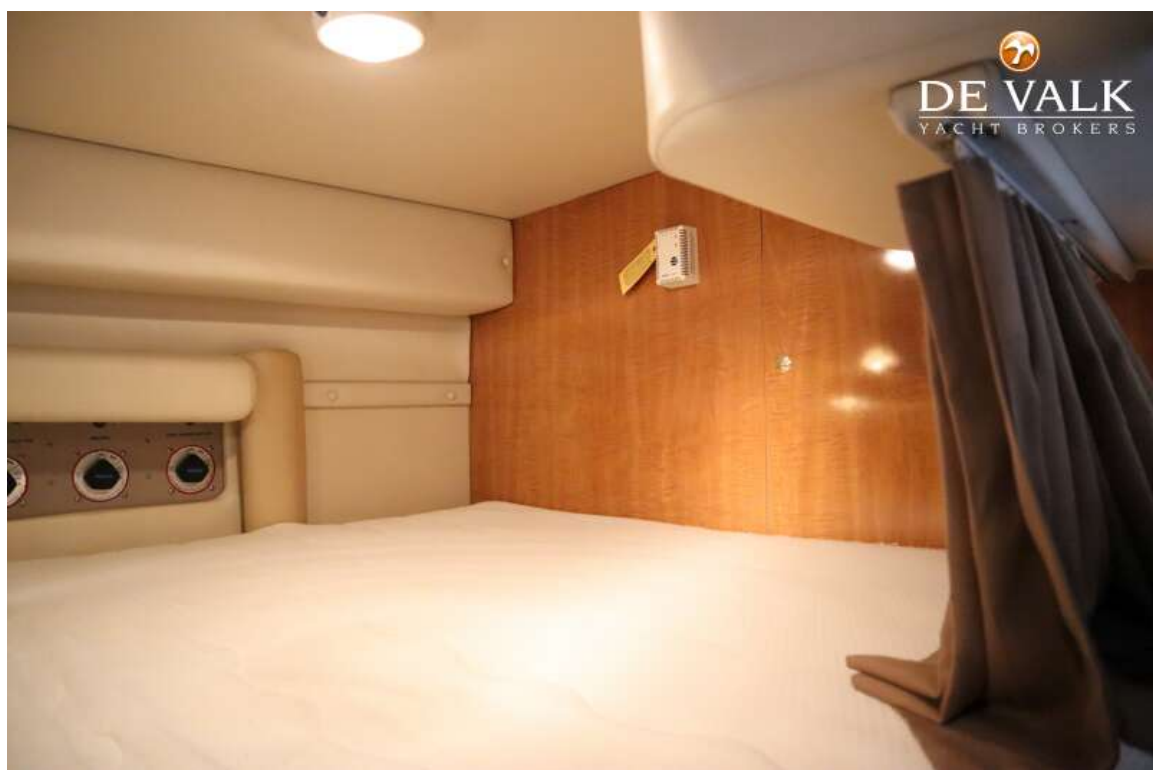
REGAL 3060 COMMODORE



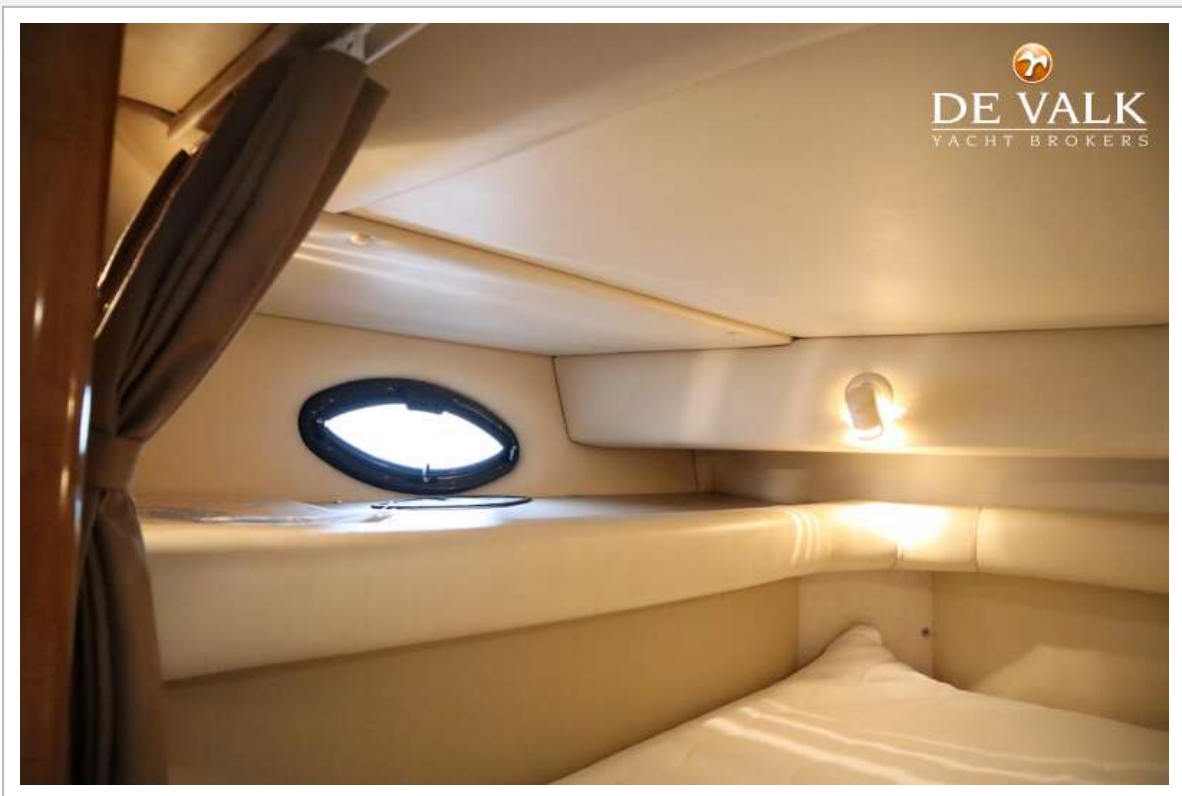
REGAL 3060 COMMODORE



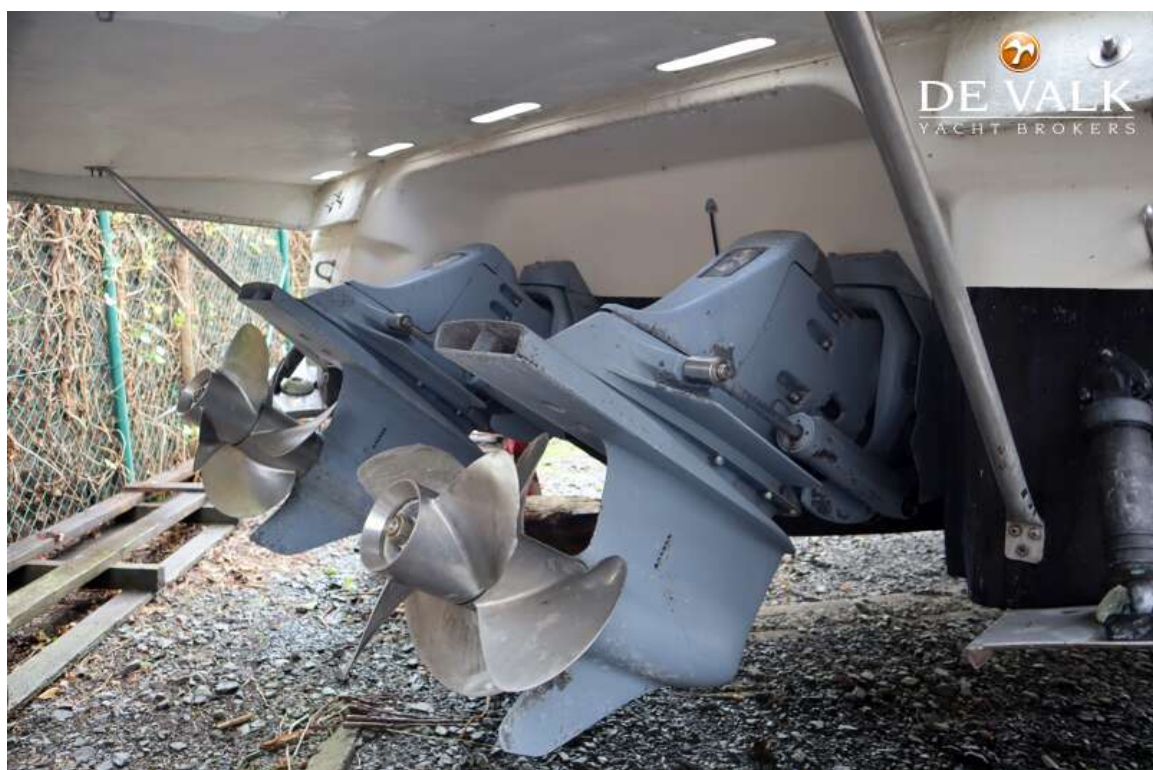
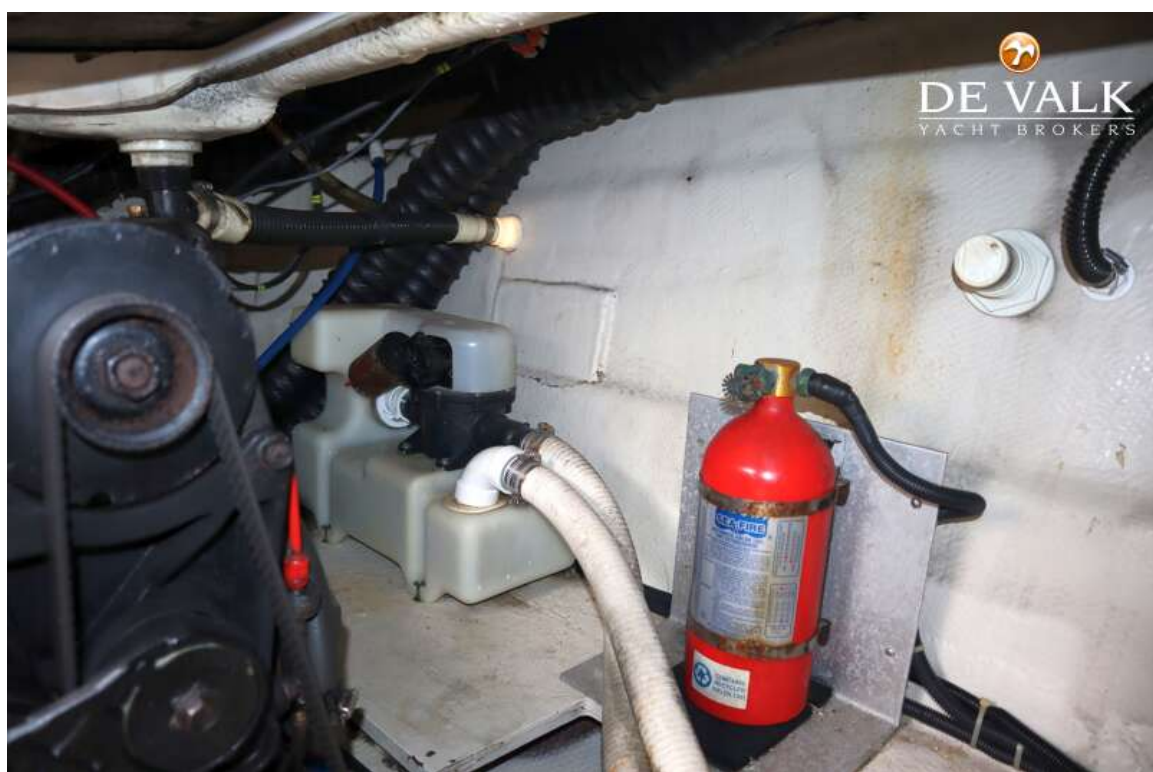
REGAL 3060 COMMODORE



REGAL 3060 COMMODORE



REGAL 3060 COMMODORE



REGAL 3060 COMMODORE

