



**THIS YACHT WILL BE AUCTIONED**

MAKMA CARIBBEAN 31 CABIN

# MAKMA CARIBBEAN 31 CABIN

## BROKER'S COMMENTS

The Makma Caribbean 31 will be auctioned online at Bright Auctions. Bids can only be placed online at Bright Auctions. All information about the auction is available on the website <https://bit.ly/4p27qCf> The Makma Caribbean 31 Cabin from 2004 is a robust cabin cruiser, powered by a powerful 125 hp Yanmar engine. With 4 berths and a kitchen, this boat is ideal for both day trips and weekend getaways. Its sturdy appearance and comfortable interior make it the perfect choice for those looking for a versatile and practical boat.

**Mark Hesselmans**

## SPECIFICATIONS

<b>Dimensions</b>	9.30 x 3.30 x 0.90 (m)	<b>Builder</b>	Makma Yachting B.V.
<b>Built</b>	2004	<b>Cabins</b>	1
<b>Material</b>	GRP	<b>Berths</b>	4
<b>Engine(s)</b>	1 x Yanmar diesel	<b>Hp/Kw</b>	125.00 (hp), 92.00 (kw)
<b>Asking price</b>	€ 25.000 (VAT Paid)	<b>Lying</b>	at sales office

## CONTACT

<b>Sales office</b>	De Valk Loosdrecht B.V.	<b>Telephone</b>	+31 (0)35 582 90 30
<b>Address</b>	't Breukeleveense Meentje 6 1231LM Loosdrecht / Wijdmeren NL	<b>E-mail</b>	loosdrecht@devalk.nl

## DISCLAIMER

These particulars are given in good faith as supplied but cannot be guaranteed.



# MAKMA CARIBBEAN 31 CABIN

## GENERAL

Model	MAKMA CARIBBEAN 31 CABIN
Type	motor yacht
LOA (m)	9,30
Beam (m)	3,30
Draft (m)	0,90
Air draft (m)	2,10
Air draft min (m)	1,65
Year built	2004
Builder	Makma Yachting B.V.
Hull material	GRP
Hull colour	blue
Hull shape	V-shaped hull
Superstructure material	GRP
Rubbing strake	fender rope
Deck material	GRP
Deck finish	teak
Superstructure deck finish	synthetic teak
Cockpit deck finish	teak
Window frame	stainless steel
Window material	tempered glass
Deckhatch	yes
Portholes	stainless steel 4x
Fuel tank (litre)	yes
Level indicator (fuel tank)	VDO
Freshwater tank (litre)	yes
Level indicator (freshwater)	VDO
Blackwater tank (litre)	yes
Level indicator (blackwater)	Waste Waters
Wheel steering	hydraulic
Outside helm position	hydraulic



# MAKMA CARIBBEAN 31 CABIN

Flybridge helm position	yes
-------------------------	-----

## ACCOMMODATION

Cabins	1
Berths	4
Interior	cherry
Floor	teak and holly
Open cockpit	yes
Aft deck	yes
Headroom saloon (m)	1,75 M
Heating	diesel ducted hot air Webasto
Dinette to convert into berth	yes
Sliding door to aft deck	yes
Galley	yes
Countertop	corian
Sink	stainless steel
Cooker	calor gas 2 pits
Fridge	Isotherm
Hot water system	220V + engine
Water pressure system	electrical
Owners cabin	double bed
Bed length (m)	2,00m
Wardrobe	shelves
Bathroom	shared
Toilet	shared Raske & vd meyde
Toilet system	manual
Wash basin	in the bathroom
Shower	shared
Guest cabin 1	twin single
Bed length (m)	1,95 m



# MAKMA CARIBBEAN 31 CABIN

## MACHINERY

No of engines	1
Make	Yanmar
HP	125
kW	92
Fuel	diesel
Engine hours	2630
Engine cooling system	freshwater heat exchanger
Drive	shaft
Shaft seal	yes
Engine controls	bowden cable
Gearbox	hydraulic
Bowthruster	electric Vetus
Exhaust	watercooled
Thrust bearing	yes
Propeller type	fixed
Propeller shaft material	stainless steel
Shaft lubrication	water
Electric bilge pump	yes
Bilge alarm	yes
Electrical installation	12V / 230V
Batteries	yes
Start battery	Wilco 12v 85Ah
Service battery	2x Bosch 12v 180Ah
Battery monitor	Mastervolt
Battery charger/inverter	Mastervolt 12/600
Diode battery combiners	yes
Shorepower	with cable

## NAVIGATION

Compass	Suunto
---------	--------



# MAKMA CARIBBEAN 31 CABIN

Electric compass	Raymarine ST40
Depth sounder	Raymarine ST40
Log	Raymarine ST40
VHF handheld	Cobra Marine
Plotter/GPS	Simrad CP33
Navigation lights	yes

## EQUIPMENT

Sprayhood	yes
Sprayhood with grab rail	yes
Cockpit cover	yes
Bimini	yes
Cockpit cushions	yes
Cockpit table	yes
Cockpit chairs	yes
Bathing platform	yes
Boarding ladder	stainless steel
Deck shower	yes
Anchor	yes
Sea railing	stainless steel
Grab rail (superstructure)	stainless steel
Wiper	Vetus
Horn	electric
Fenders	yes
Mooring lines	yes
Radio	Clarion
Cockpit speakers	yes
Speakers in cabin	yes





# MAKMA CARIBBEAN 31 CABIN



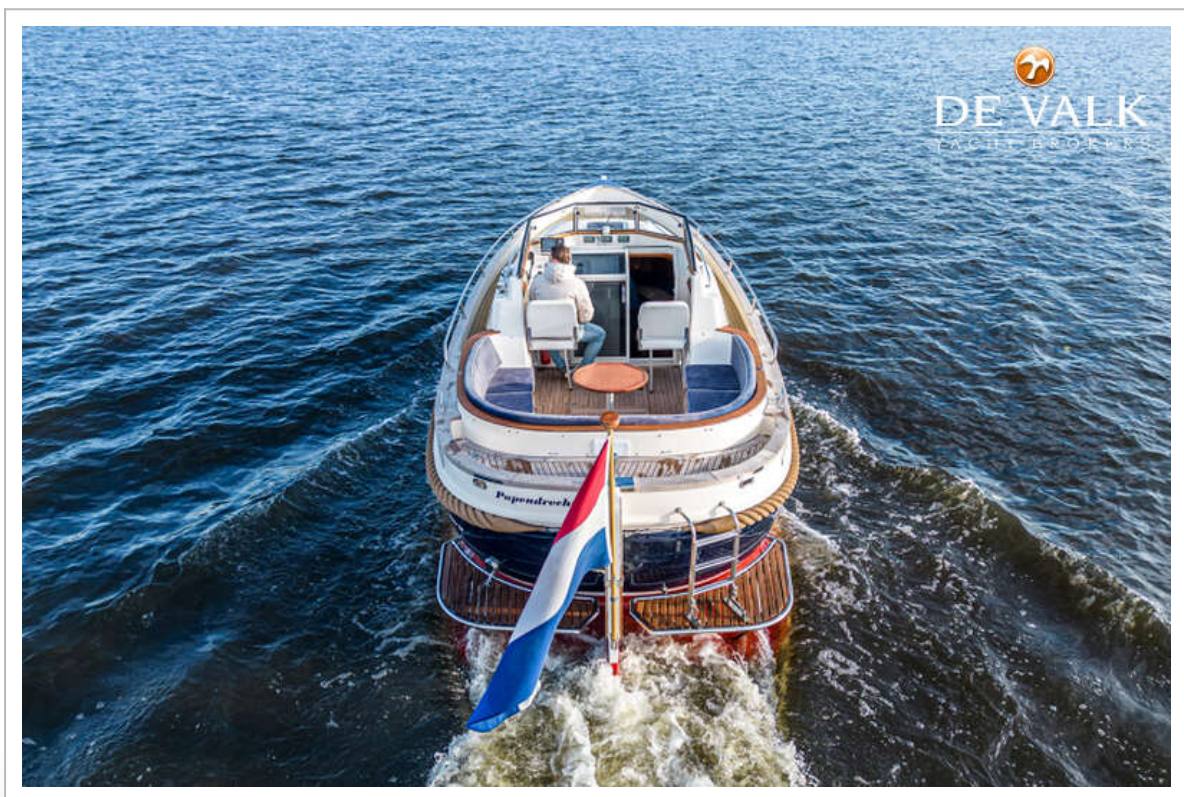


# MAKMA CARIBBEAN 31 CABIN



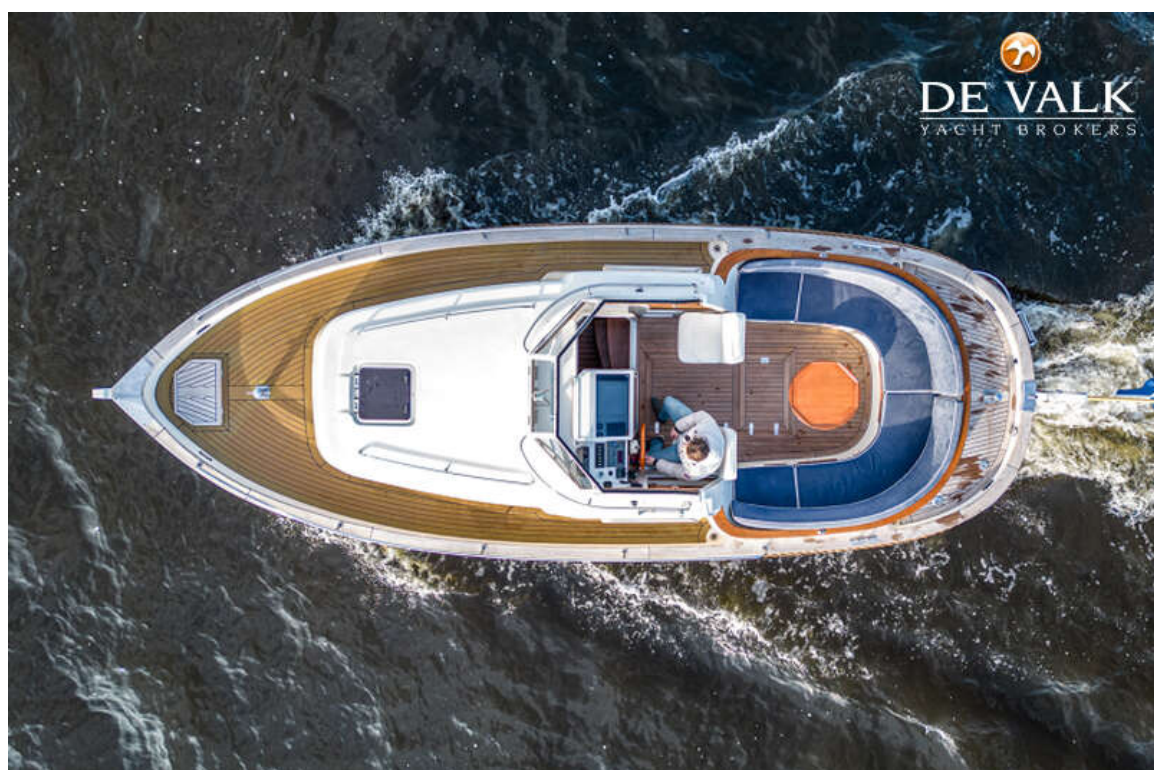


# MAKMA CARIBBEAN 31 CABIN





# MAKMA CARIBBEAN 31 CABIN





# MAKMA CARIBBEAN 31 CABIN



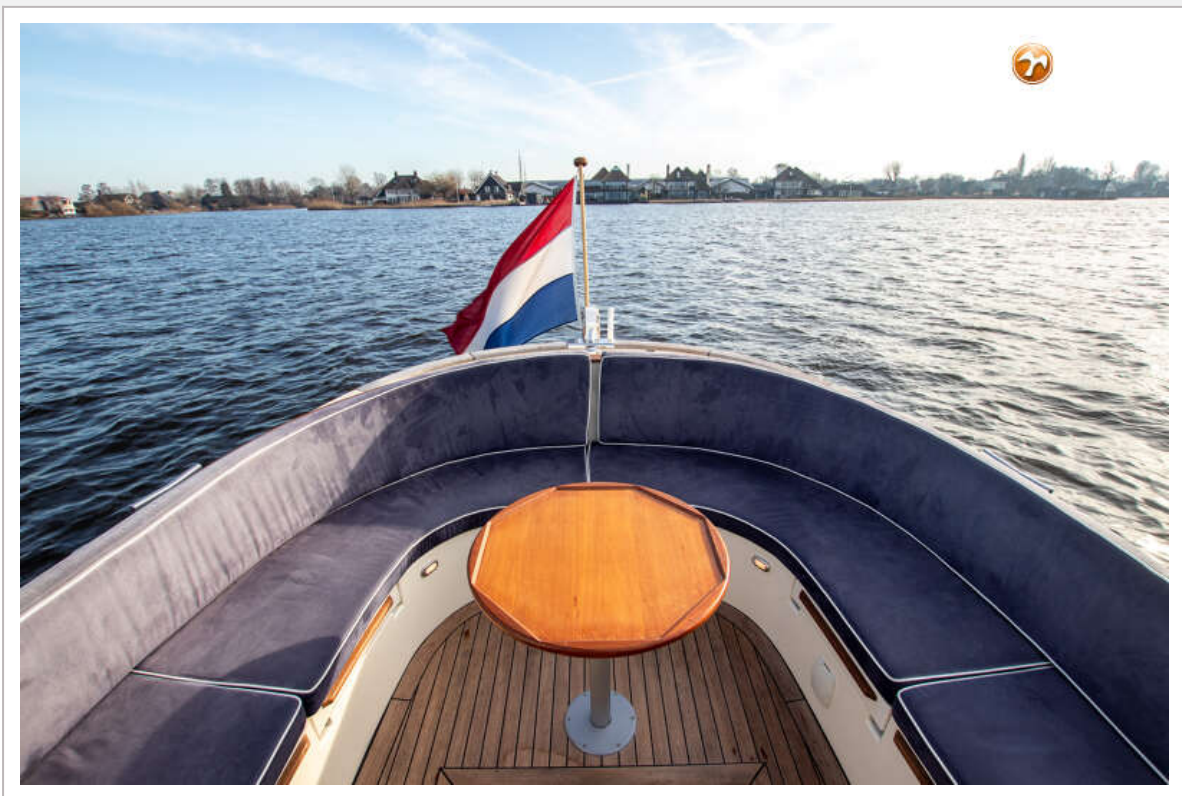


# MAKMA CARIBBEAN 31 CABIN





# MAKMA CARIBBEAN 31 CABIN



# MAKMA CARIBBEAN 31 CABIN

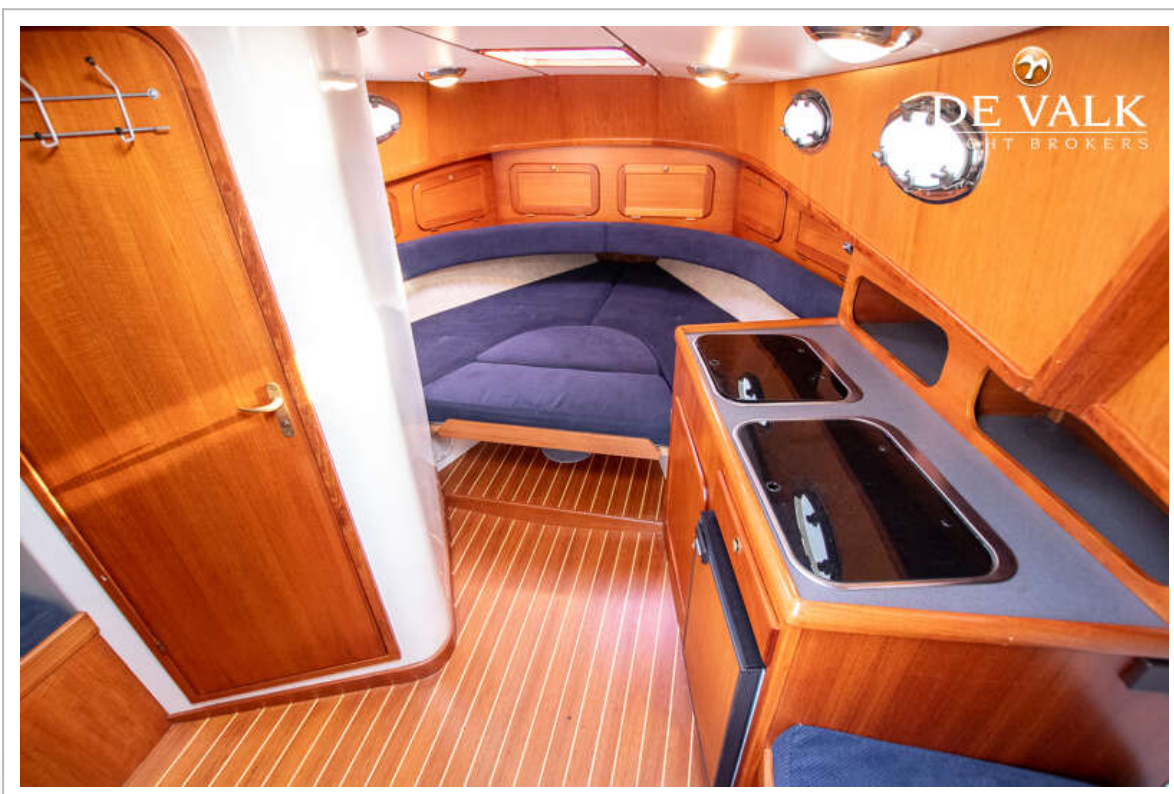




# MAKMA CARIBBEAN 31 CABIN



# MAKMA CARIBBEAN 31 CABIN

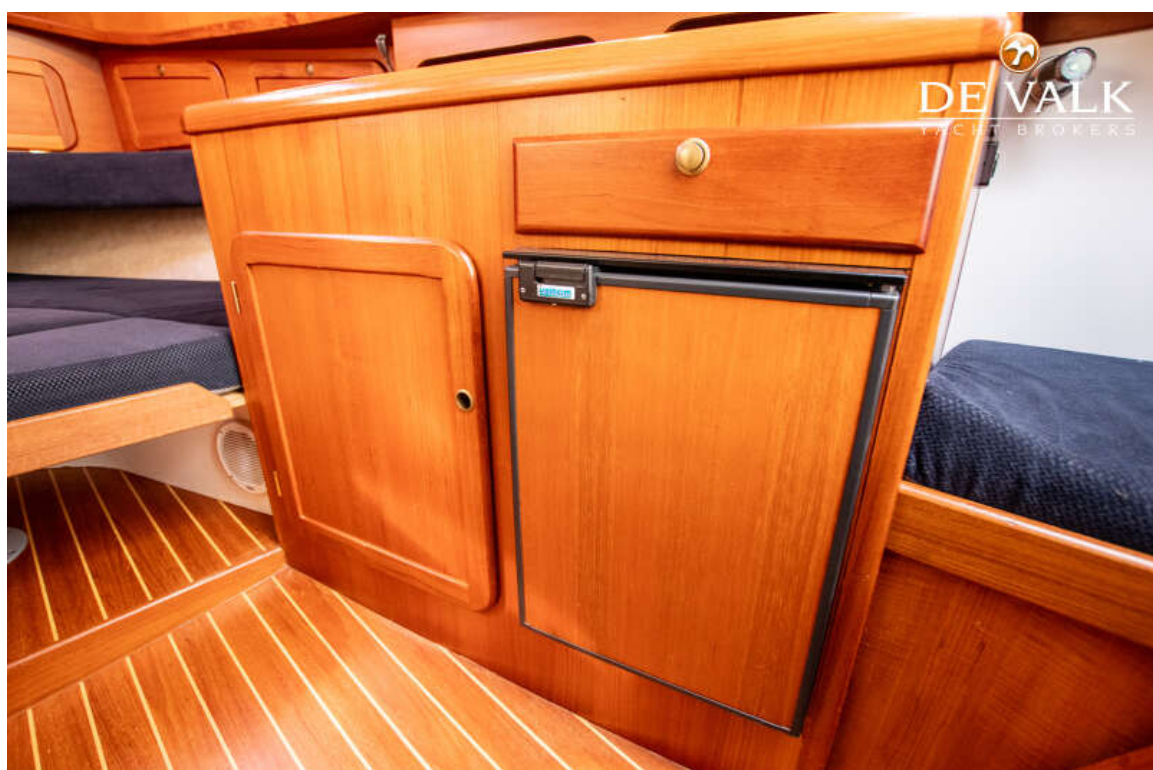




# MAKMA CARIBBEAN 31 CABIN

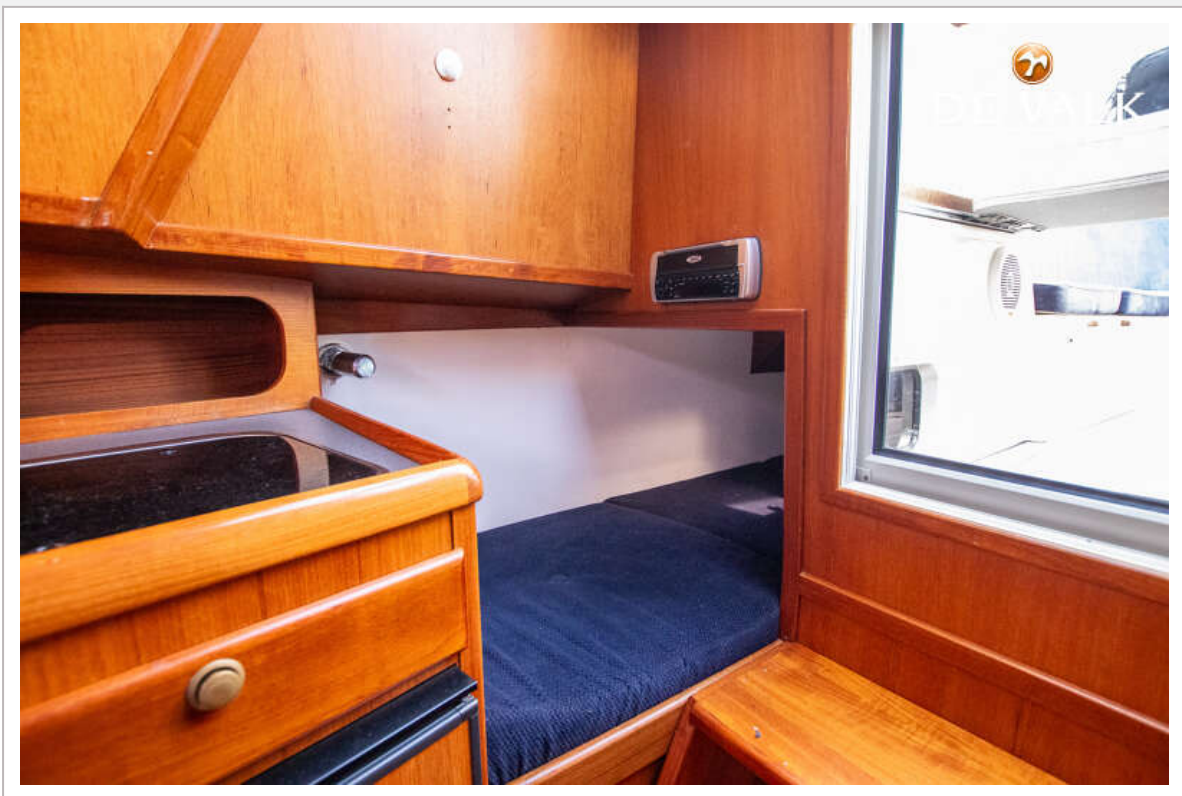


# MAKMA CARIBBEAN 31 CABIN

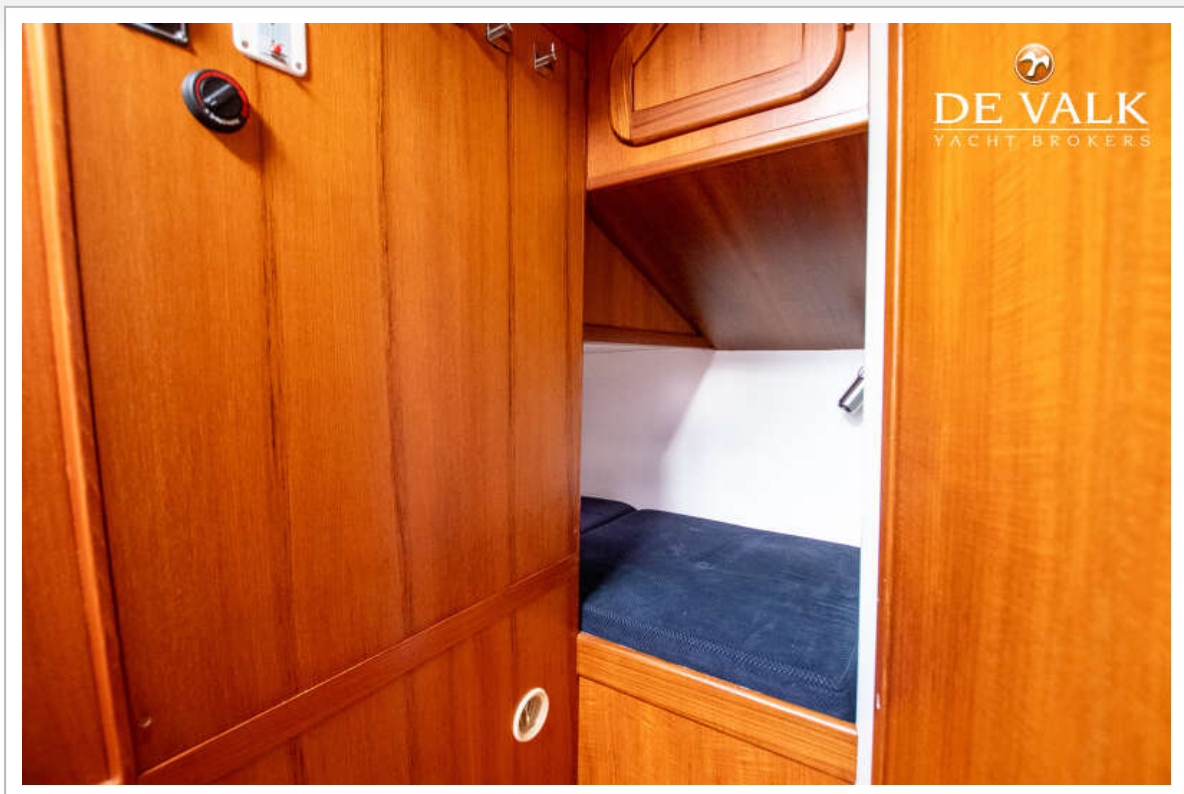




## MAKMA CARIBBEAN 31 CABIN

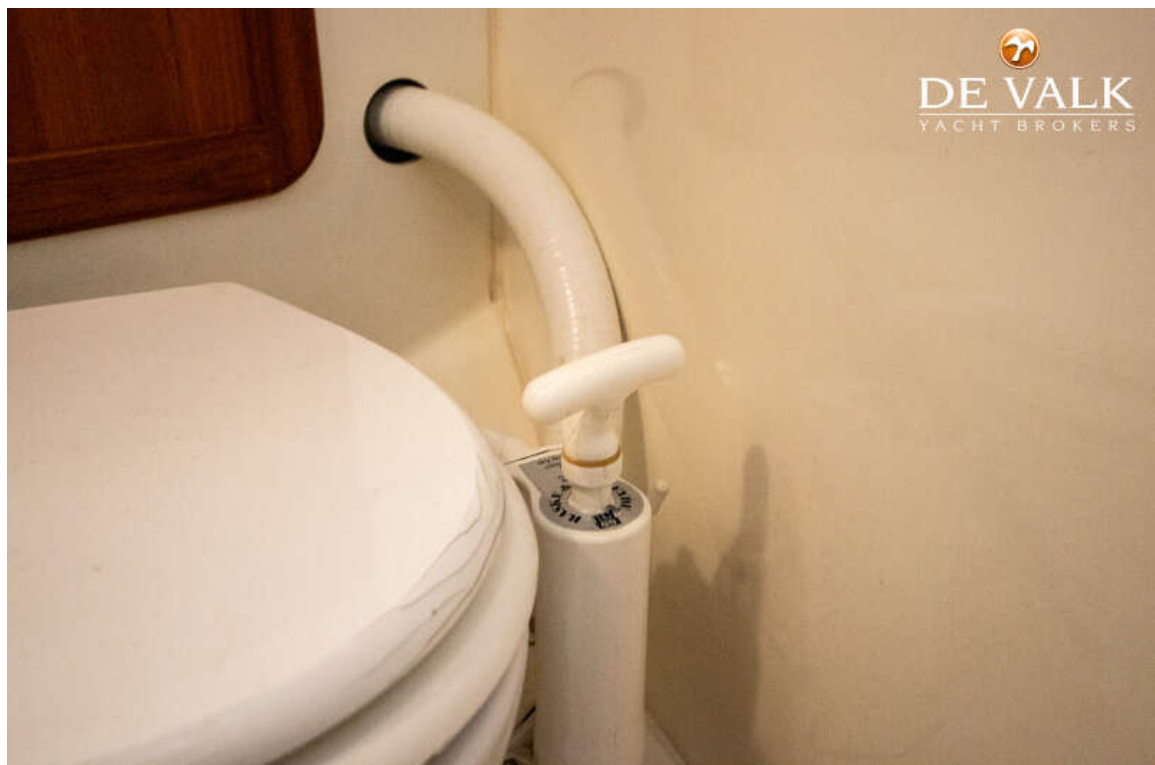


## MAKMA CARIBBEAN 31 CABIN

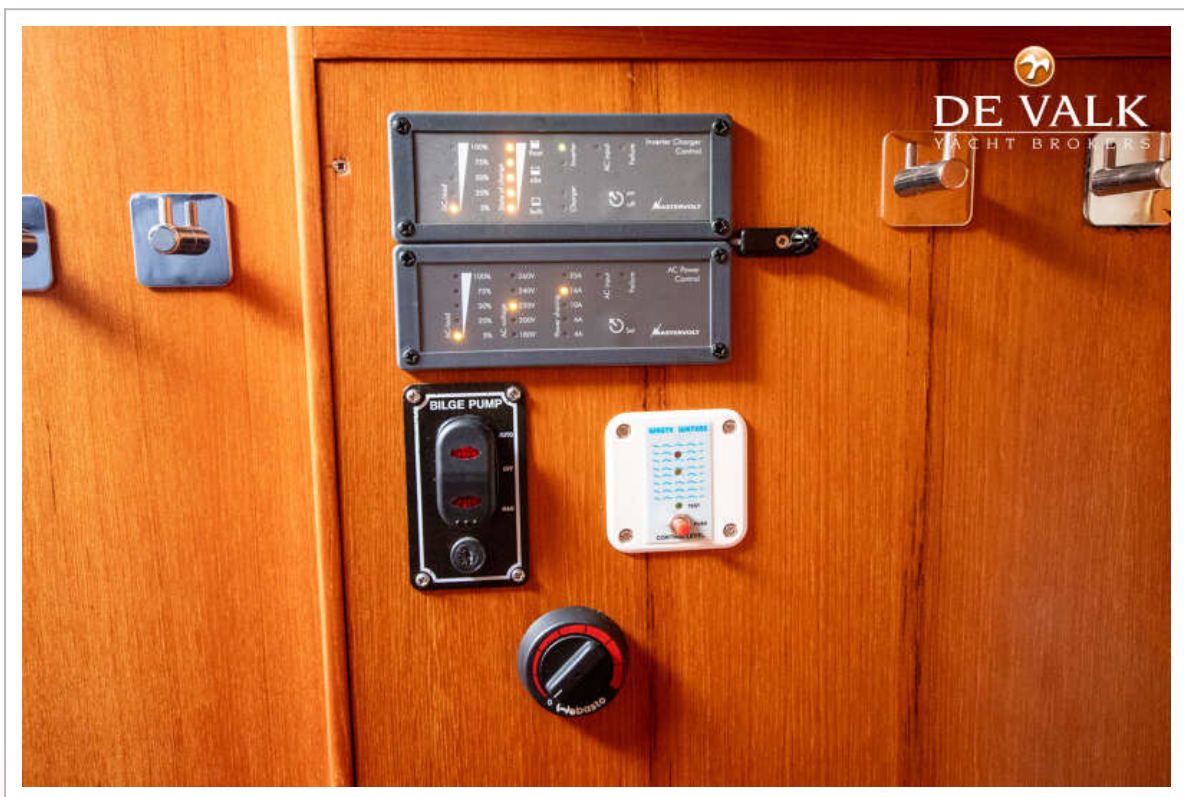
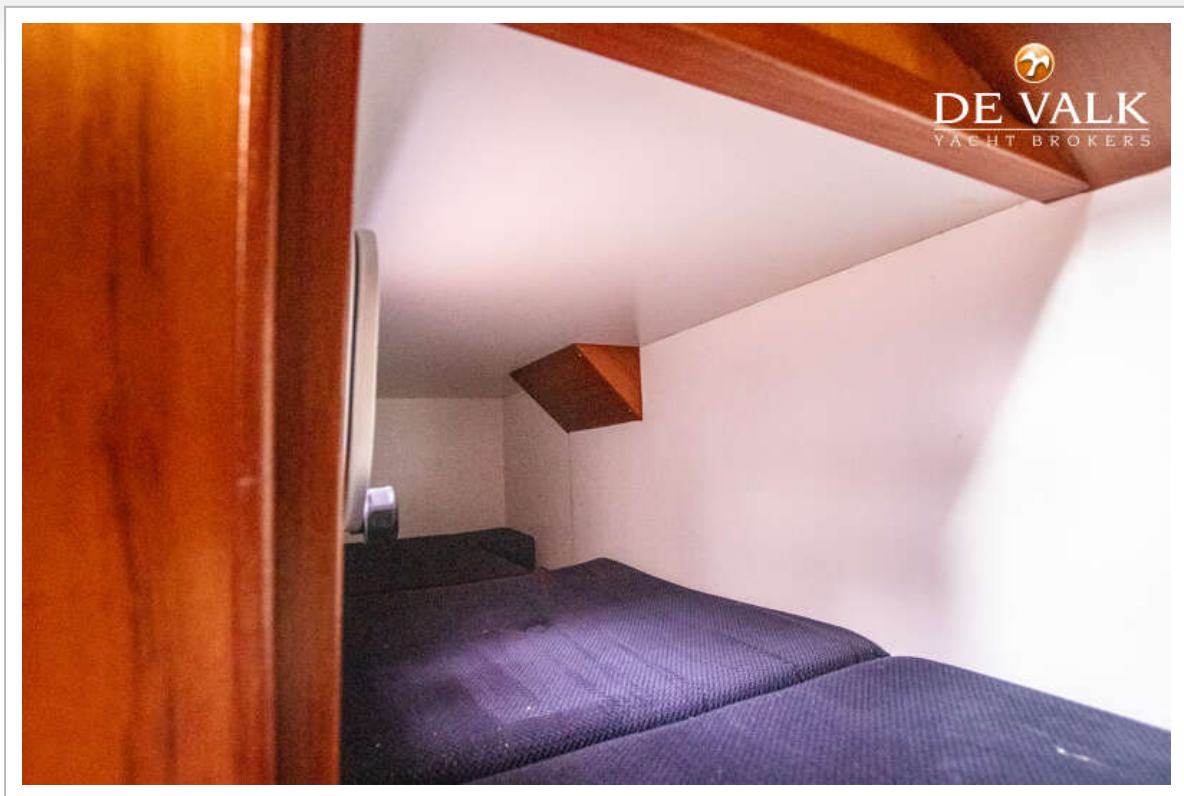




## MAKMA CARIBBEAN 31 CABIN

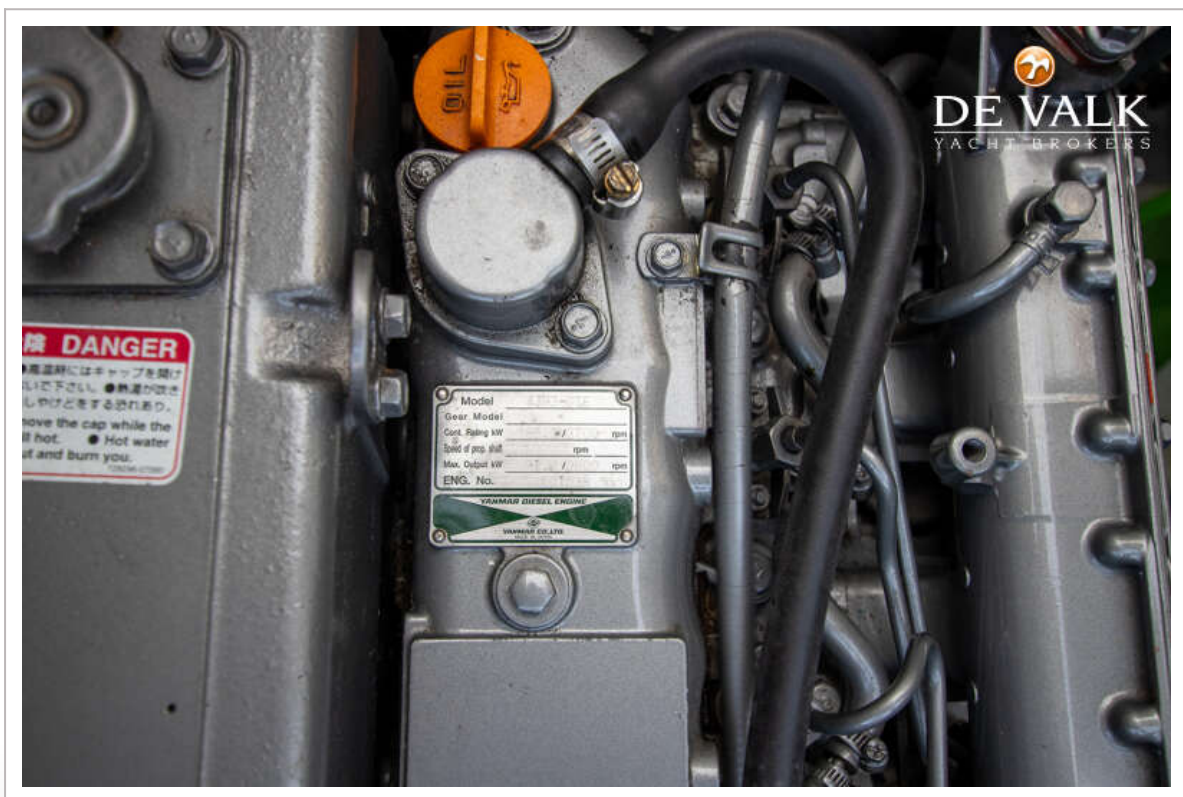
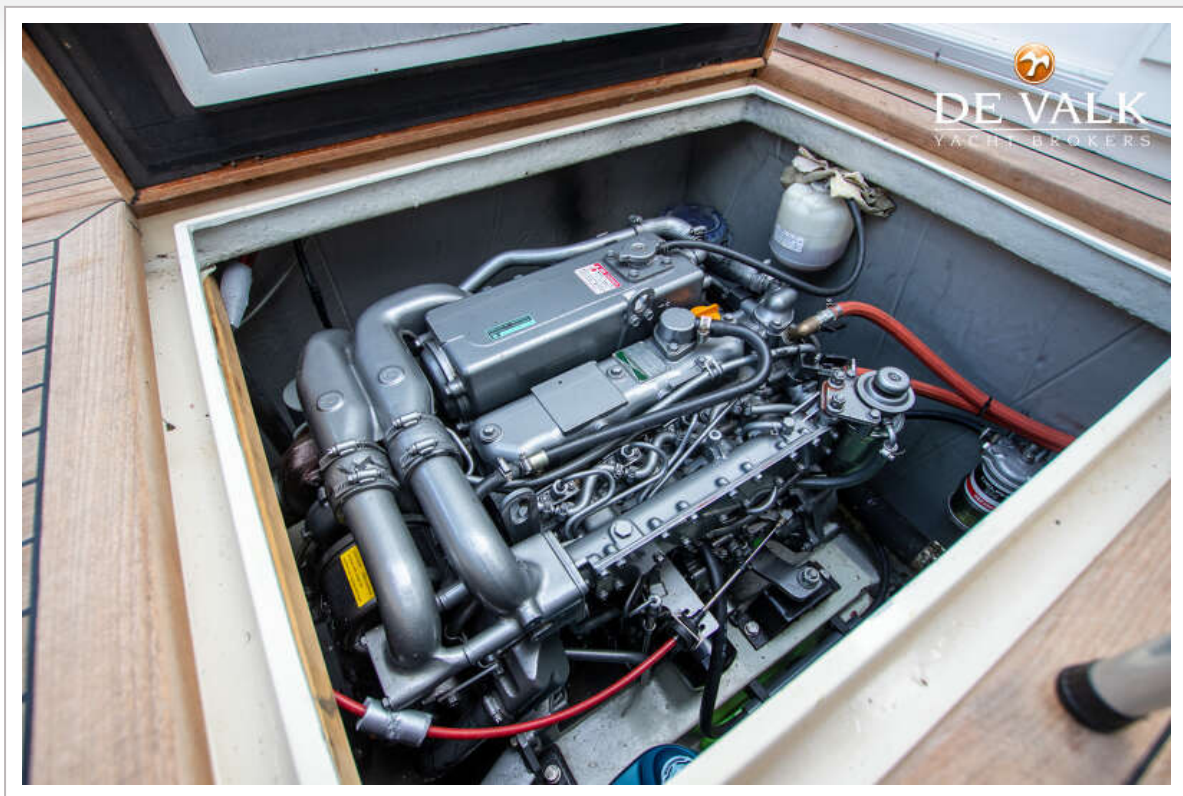


# MAKMA CARIBBEAN 31 CABIN

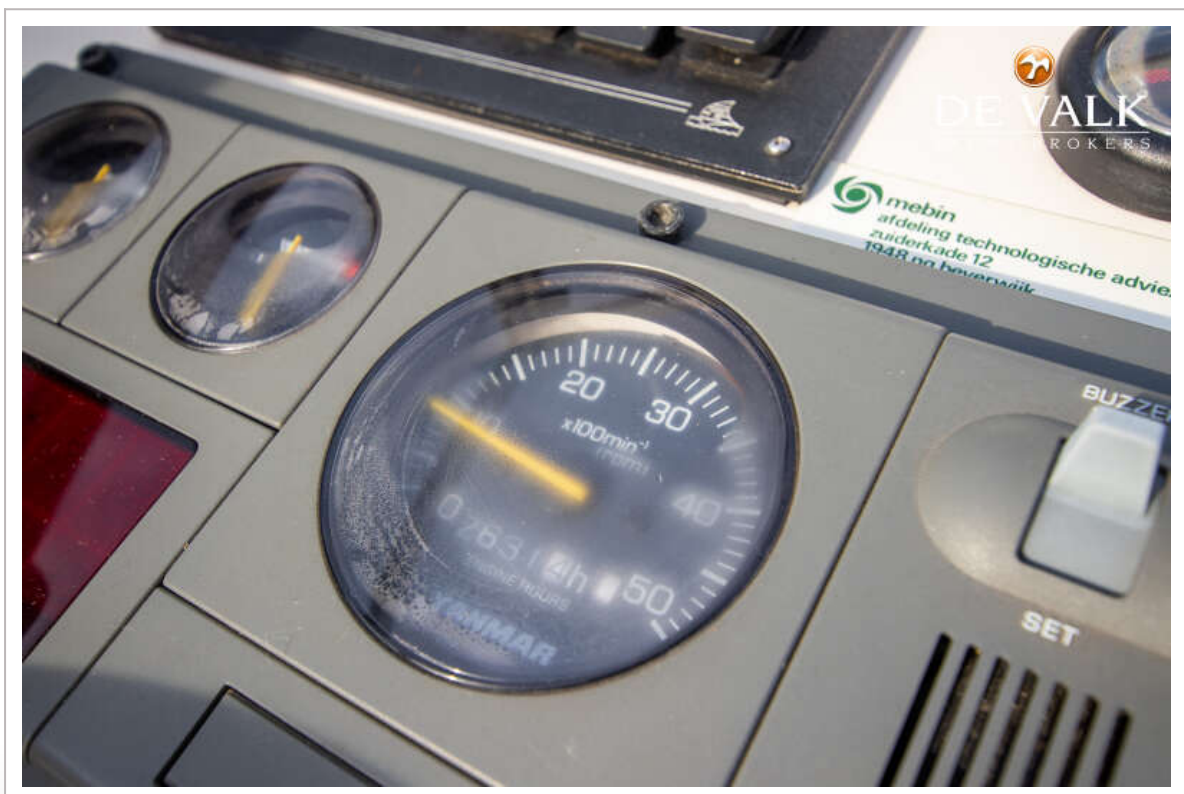
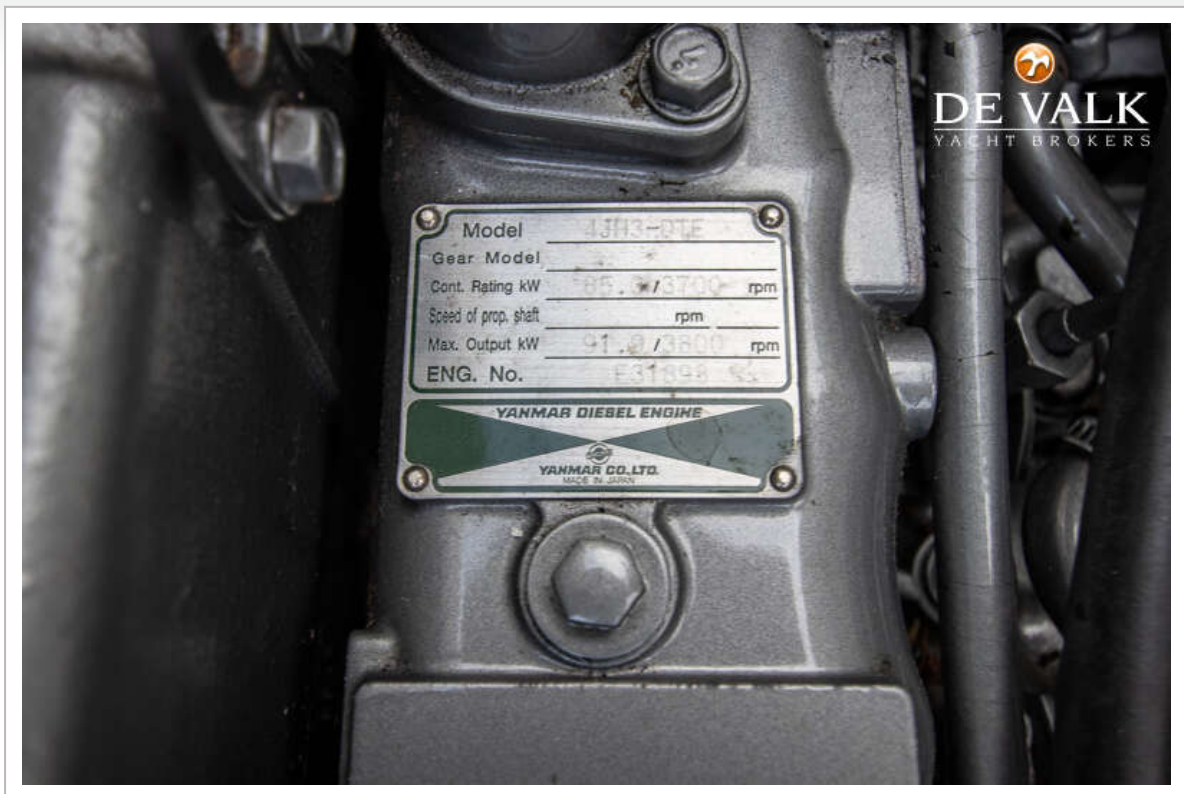




# MAKMA CARIBBEAN 31 CABIN



# MAKMA CARIBBEAN 31 CABIN





# MAKMA CARIBBEAN 31 CABIN

