



## VRIPACK 69 EXPEDITION TRAWLER

# VRIPACK 69 EXPEDITION TRAWLER

## BROKER'S COMMENTS

On offer this beautiful Vripack 69 Trawler true ocean going explorer-globetrotter. She comes fully equipped, has ample fuel and water storage for long range cruising and short handed operation. Excellent 3 double cabin (plus crew cabin) accommodations, twin deck living quarters and all the "bells & whistles" you may want. Classic ambience design and interior with practical details and enough space to entertain family and friends. This Vripack passage maker similar to Doggersbank, Nordhavn and Northern Marine, uniquely combines reliability, comfort, range and living onboard. Located Greece.

*Marc Weijenberg*

## SPECIFICATIONS

|                     |                              |                |                              |
|---------------------|------------------------------|----------------|------------------------------|
| <b>Dimensions</b>   | 21.15 x 5.92 x 1.88 (m)      | <b>Builder</b> | Kim's Yacht Company          |
| <b>Built</b>        | 2004                         | <b>Cabins</b>  | 3                            |
| <b>Material</b>     | Steel                        | <b>Berths</b>  | 6                            |
| <b>Engine(s)</b>    | 2 x Caterpillar 3306B diesel | <b>Hp/Kw</b>   | 2 x 235.00 (hp), 172.96 (kw) |
| <b>Asking price</b> | € 1.200.000 (VAT Paid)       | <b>Lying</b>   | Greece                       |

## CONTACT

|                     |                                     |                  |                      |
|---------------------|-------------------------------------|------------------|----------------------|
| <b>Sales office</b> | De Valk Thuishaven                  | <b>Telephone</b> | +31 35 5829042       |
| <b>Address</b>      | Marinaweg 8<br>1361 AC Almere<br>NL | <b>E-mail</b>    | thuishaven@devalk.nl |

## DISCLAIMER

These particulars are given in good faith as supplied but cannot be guaranteed.



# VRIPACK 69 EXPEDITION TRAWLER

## GENERAL

|                                   |  |
|-----------------------------------|--|
| <b>Model</b>                      | VRIPACK 69 EXPEDITION TRAWLER                    |
| <b>Type</b>                       | motor yacht                                      |
| <b>LOA (m)</b>                    | 21,15  |
| <b>Beam (m)</b>                   | 5,92   |
| <b>Draft (m)</b>                  | 1,88   |
| <b>Air draft (m)</b>              | 10,50  |
| <b>Air draft min (m)</b>          | 6,75   |
| <b>Headroom (m)</b>               | 2,00   |
| <b>Year built</b>                 | 2004   |
| <b>Builder</b>                    | Kim's Yacht Company                              |
| <b>Country</b>                    | China  |
| <b>Designer</b>                   | Vripack Yacht Design                             |
| <b>Displacement (t)</b>           | 85   |
| <b>CE norm</b>                    | A  |
| <b>Hull material</b>              | steel  |
| <b>Hull colour</b>                | blue   |
| <b>Hull shape</b>                 | round-bilged                                     |
| <b>Keel type</b>                  | long keel  |
| <b>Superstructure material</b>    | aluminium  |
| <b>Rubbing strake</b>             | rubber   |
| <b>Deck material</b>              | steel  |
| <b>Deck finish</b>                | teak   |
| <b>Superstructure deck finish</b> | teak   |
| <b>Cockpit deck finish</b>        | teak   |
| <b>Window frame</b>               | aluminium Seaglaze                               |
| <b>Window material</b>            | double glazing                                   |
| <b>Deckhatch</b>                  | Mainship   |
| <b>Portholes</b>                  | stainless steel                                  |
| <b>Insulation</b>                 | foam plates 35mm plus extensive noise insulation |
| <b>Mast can be lowered</b>        | hydraulic  |



# VRIPACK 69 EXPEDITION TRAWLER

|                                     |   |
|-------------------------------------|---|
| <b>Fuel tank (litre)</b>            | steel 1 x 4350  |
| <b>Fuel tank 2 (litre)</b>          | steel 2 x 3145  |
| <b>Level indicator (fuel tank)</b>  | yes   |
| <b>Fuel daytank (litre)</b>         | steel 2 x 2030  |
| <b>Freshwater tank (litre)</b>      | stainless steel 2 x 1970  |
| <b>Level indicator (freshwater)</b> | yes   |
| <b>Blackwater tank (litre)</b>      | polyethylene 1280   |
| <b>Level indicator (blackwater)</b> | yes   |
| <b>Blackwater tank extraction</b>   | deck extraction + pump  |
| <b>Greywater tank (litre)</b>       | polyethylene 150  |
| <b>Level indicator (greywater)</b>  | yes   |
| <b>Wheel steering</b>               | hydraulic Kobelt joystick with follow-up  |
| <b>Extra info</b>                   | Heavy duty built with covered sidedecks with 95cm high bullwark, raised pilothouse and crewcabin forward. Behind the pilothouse there is sun-covered enterainment area with bar, all-fresco dining table and sun bathing area. 4 Watertight compartments. |
| <b>Extra info</b>                   | Teakdecks laid in 2010, are glued. Ocean Led underwater lights, fuel transfer pump, air compressor, flyscreens for hatches and portholes,   |
| <b>Extra info</b>                   | We have a comprehensive list on maintenance, renewals, refit and extra equipment on file for you.   |

## ACCOMMODATION

|                     |   |
|---------------------|---|
| <b>Cabins</b>       | 3   |
| <b>Berths</b>       | 6   |
| <b>Crew cabin</b>   | Forward at the bow a V-berth with own bathroom/shower/toilet.   |
| <b>Crew berths</b>  | 2   |
| <b>Interior</b>     | American Cherry   |
| <b>Floor</b>        | wood  |
| <b>Open cockpit</b> | yes   |
| <b>Pilot house</b>  | Raised with settee, captains chair, full navigation area and access to entertainment deck and sun bathing area. |



# VRIPACK 69 EXPEDITION TRAWLER

|                                |  |
|--------------------------------|--|
| <b>Deck saloon</b>             | With large L-shaped, leather covered settee/dinette, open bar and access to the aft deck/cockpit area. |
| <b>Headroom saloon (m)</b>     | 2,00   |
| <b>Heating</b>                 | central heating (2022)   |
| <b>Heating 2</b>               | electric 220V For guest and crewcabins   |
| <b>Air-conditioning</b>        | reverse cycle airco 2 x Cruisair (2 x 36000 btu) including 9 fan coil units                            |
| <b>Opening door to cockpit</b> | Plus one starboard side opening door to the side deck.   |
| <b>Galley</b>                  | U-shaped with Corian worktops  |
| <b>Sink</b>                    | stainless steel 2 x (incl. sink waste shredder)  |
| <b>Cooker</b>                  | ceramic Bosch 4 burner (220v)  |
| <b>Oven</b>                    | Miele + grill (220v)   |
| <b>Extractor</b>               | (220v)   |
| <b>Microwave</b>               | Neff (220v)  |
| <b>Fridge</b>                  | Whirlpool large + Liebherr drinks fridge in salon.   |
| <b>Freezer</b>                 | 2 x  |
| <b>Hot water system</b>        | 220V Boiler  |
| <b>Water pressure system</b>   | electrical   |
| <b>Dishwasher</b>              | Miele (220v)   |
| <b>Ice maker</b>               | yes  |
| <b>Coffee maker</b>            | Philips  |
| <b>Crockery</b>                | yes  |
| <b>Owners cabin</b>            | double bed   |
| <b>Bed length (m)</b>          | Large sized 2,00 x 1,80 mtr, headroom 2,00 mtr   |
| <b>Wardrobe</b>                | hanging/drawers/shelves  |
| <b>Bathroom</b>                | en suite I   |
| <b>Toilet</b>                  | en suite   |
| <b>Toilet system</b>           | electric Planus  |
| <b>Wash basin</b>              | in the bathroom  |
| <b>Shower</b>                  | en suite   |
| <b>Extra info</b>              | All cabins have controlled aircon units.   |
| <b>Guest cabin 1</b>           | twin single  |



# VRIPACK 69 EXPEDITION TRAWLER

|                        |  |
|------------------------|--|
| <b>Bed length (m)</b>  | 2,00 x 0,90 mtr, headroom 2,00 mtr                                     |
| <b>Wardrobe</b>        | hanging/drawers/shelves  |
| <b>Bathroom</b>        | en suite II  |
| <b>Toilet</b>          | en suite   |
| <b>Toilet system</b>   | electric Planus  |
| <b>Wash basin</b>      | in the bathroom  |
| <b>Shower</b>          | en suite   |
| <b>Guest cabin 2</b>   | twin single  |
| <b>Bed length (m)</b>  | 2,00 x 0,90 mtr, headroom 2,00 mtr                                     |
| <b>Wardrobe</b>        | hanging/drawers/shelves  |
| <b>Bathroom</b>        | III  |
| <b>Toilet</b>          | en suite   |
| <b>Toilet system</b>   | electric Planus  |
| <b>Wash basin</b>      | in the bathroom  |
| <b>Shower</b>          | en suite   |
| <b>Bathroom</b>        | Dayhead in the hallway below decks                                     |
| <b>Toilet</b>          | separate Planus  |
| <b>Toilet system</b>   | electric   |
| <b>Wash basin</b>      | in the bathroom  |
| <b>Washing machine</b> | Whirlpool (220v)   |
| <b>Extra info</b>      | Freshwater system has a central UV sterilizer and multi-stage filters. |

## MACHINERY

|                       |             |
|-----------------------|-------------|
| <b>No of engines</b>  | 2           |
| <b>Make</b>           | Caterpillar |
| <b>Type</b>           | 3306B       |
| <b>HP</b>             | 235         |
| <b>kW</b>             | 172.96      |
| <b>Fuel</b>           | diesel      |
| <b>Year installed</b> | 2004        |



# VRIPACK 69 EXPEDITION TRAWLER

|                                  |  |
|----------------------------------|--|
| <b>Maximum speed (kn)</b>        | 12   |
| <b>Cruising speed (kn)</b>       | 7  |
| <b>Consumption (l/hr)</b>        | 25   |
| <b>Range (nm)</b>                | 3700   |
| <b>Engine hours</b>              | 5500   |
| <b>Engine cooling system</b>     | hopper cooling   |
| <b>Drive</b>                     | shaft  |
| <b>Shaft seal</b>                | Dripless seals   |
| <b>Engine controls</b>           | electrical Kobelt plus wired remote engine controls for docking.   |
| <b>Gearbox</b>                   | hydraulic Twin Disc 5091   |
| <b>Bowthruster</b>               | hydraulic Attema type Frisian-35 (38hp)  |
| <b>Propeller type</b>            | fixed 38" diameter/32" pitch   |
| <b>Propeller blades</b>          | 4  |
| <b>Propeller shaft material</b>  | stainless steel (2022)   |
| <b>Shaft lubrication</b>         | water  |
| <b>Electric bilge pump</b>       | Heavy-duty pump with manifold for bilge compartments, direct overboard. By-pass backup system with deck wash / firefighting pump. Plus Jabsco pumps in all smaller compartments. |
| <b>Bilge alarm</b>               | Ajax   |
| <b>Electrical installation</b>   | 24v DC plus 220/380v AC  |
| <b>Generator</b>                 | silent separator Northern Lights 984k5 1500 rpm 220/380V 50Hz  |
| <b>Running hours generator</b>   | 7500   |
| <b>Generator 2</b>               | silent separator Northern Lights 984K5 1500 rpm 220/380V 50Hz  |
| <b>Running hours generator 2</b> | 6750   |
| <b>Start battery</b>             | 200ah (2023)   |
| <b>Service battery</b>           | 2 x 900ah (2023)   |
| <b>Generator battery</b>         | 4 x 80ah (2025)  |
| <b>Battery monitor</b>           | yes  |
| <b>Battery charger</b>           | 3 x 24v/100amp Mastervolt for service batteries. Mastervolt chargers for start batteries.  |
| <b>Inverter</b>                  | 12kW Mastervolt/Victron inverters  |
| <b>Shorepower</b>                | with cable 230vAC/110vAC   |



# VRIPACK 69 EXPEDITION TRAWLER

|                               |  |
|-------------------------------|--|
| <b>Insulation transformer</b> | Victron 7000i  |
| <b>Watermaker</b>             | Seamak(4500 ltr/24hr) installed 2022   |
| <b>Stabilizers</b>            | fin Koopnautic   |
| <b>Extra info</b>             | Floscan fuel metering system, Attema hydraulic powerpack for bow thruster, stabilizers, anchor winch, autopilot and mast.<br>PTO's on Caterpillar engines. Upgraded 300amp alternators on Caterpillar engines.     |
| <b>Extra info</b>             | Twin Racor type fuel filters with by-pass system and fuel cooling between tank and main engines. Fuel transfer system with electric and manual pump with manifold between the tanks. 1 x Alfa Laval Fuel separator |
| <b>Extra info</b>             | Engineroom headroom 1,80mtr  |

## NAVIGATION

|                               |  |
|-------------------------------|--|
| <b>Compass</b>                | Ritchie  |
| <b>Electric compass</b>       | Simrad AR7/RGC50 Gyro + Holland IT type 9  |
| <b>Depth sounder</b>          | Simrad NSS12 Evo3  |
| <b>Log</b>                    | Simrad   |
| <b>Windset</b>                | Simrad IS50  |
| <b>Fish finder</b>            | Furuno FCV-600L  |
| <b>VHF</b>                    | Sailor HC4500 + Sailor RT2048 + Standard Horizon                                       |
| <b>VHF handheld</b>           | 3 x plus walkie-talkies  |
| <b>Autopilot</b>              | Simrad AP50  |
| <b>Rudder angle indicator</b> | Simrad   |
| <b>Radar</b>                  | Simrad   |
| <b>GPS</b>                    | Simrad   |
| <b>Plotter</b>                | Simrad HS50 + 2 x 27" screen   |
| <b>Navtex</b>                 | + weatherfax intergrated in Furuno network   |
| <b>Personal computer</b>      | yes  |
| <b>PC connection</b>          | yes  |
| <b>Wifi antenna</b>           | Ethernet and wireless network for navigation communication, cameras and entertainment. |
| <b>Electronic chart(s)</b>    | Europe (via Ipad)  |



# VRIPACK 69 EXPEDITION TRAWLER

|                          |  |
|--------------------------|--|
| <b>AIS transponder</b>   | yes  |
| <b>EPIRB</b>             | 406 Mhz + GPS  |
| <b>Camera</b>            | Rearview plus onboard security/cctv cameras for 360 degree areas and engineroom. |
| <b>Navigation lights</b> | yes  |
| <b>Searchlight</b>       | Sanshin HR1012G remote   |
| <b>Loudhailer</b>        | Raymarine Ray430   |
| <b>Extra info</b>        | Iridium GO satellite phone   |

## EQUIPMENT

|                         |   |
|-------------------------|---|
| <b>Fixed hardtop</b>    | Over the entertainment area and bar on the upper deck.  |
| <b>Cockpit cushions</b> | yes   |
| <b>Cockpit table</b>    | yes   |
| <b>Cockpit chairs</b>   | yes   |
| <b>Bathing platform</b> | yes   |
| <b>Boarding ladder</b>  | stainless steel   |
| <b>Transom door</b>     | yes   |
| <b>Gangway</b>          | Opacmare 3 stainless steel, hydraulic including remote. |
| <b>Deck shower</b>      | hot & cold water  |
| <b>Anchor</b>           | Pool 110kg  |
| <b>Anchor chain</b>     | 110 mtr chain stainless (14mm)                          |
| <b>Anchor 2</b>         | Pool 110kg  |
| <b>Anchor chain</b>     | 110 mtr stainless chain (14rmm)                         |
| <b>Chain counter</b>    | 2 x Muir 500G   |
| <b>Windlass</b>         | hydraulic 2 x Muir 4500                                 |
| <b>Capstan</b>          | 2 x Muir 4500   |
| <b>Windlass aft</b>     | 2 x Maxwell VC2200 1000kg mooring winches               |
| <b>Deck wash</b>        | Heavy duty 220vAC pump (also for fire fighting)         |
| <b>Dinghy</b>           | rigid inflatable Grand G380N (2023)                     |
| <b>Outboard</b>         | Yamaha 40hp (2023)                                      |
| <b>Deck crane</b>       | hydraulic 900kg, installed 2019                         |



# VRIPACK 69 EXPEDITION TRAWLER

|                                    |   |
|------------------------------------|---|
| <b>Sea railing</b>                 | stainless steel                                 |
| <b>Railing side opening gates</b>  | 2 x   |
| <b>Life raft</b>                   | container Viking Ocean (2023)                   |
| <b>Life raft (pers)</b>            | 12  |
| <b>Last life raft survey</b>       | 2023  |
| <b>Lifejackets</b>                 | 12 x & 4 x Jon buoy                             |
| <b>Lifebuoy</b>                    | 2 x   |
| <b>Wiper</b>                       | 5 x with wash                                   |
| <b>Horn</b>                        | air pressure Sonabel                            |
| <b>Fenders</b>                     | yes   |
| <b>Mooring lines</b>               | yes   |
| <b>Spare parts</b>                 | yes   |
| <b>Tools</b>                       | yes   |
| <b>Alarm system</b>                | Security & Ajax fire alarm                      |
| <b>TV</b>                          | Samsung LCD in salon                            |
| <b>Satellite</b>                   | KVH   |
| <b>TracVision ball</b>             | yes   |
| <b>Radio-cd player</b>             | yes   |
| <b>DVD player</b>                  | yes   |
| <b>Surround Sound System</b>       | yes   |
| <b>Speakers in salon</b>           | yes   |
| <b>Fire extinguisher</b>           | yes   |
| <b>Latest extinguisher survey</b>  | 04-2024   |
| <b>Extinguisher in engine room</b> | yes   |
| <b>Auto extinguisher system</b>    | Seafire (03-2023) for engineroom and lazarette. |



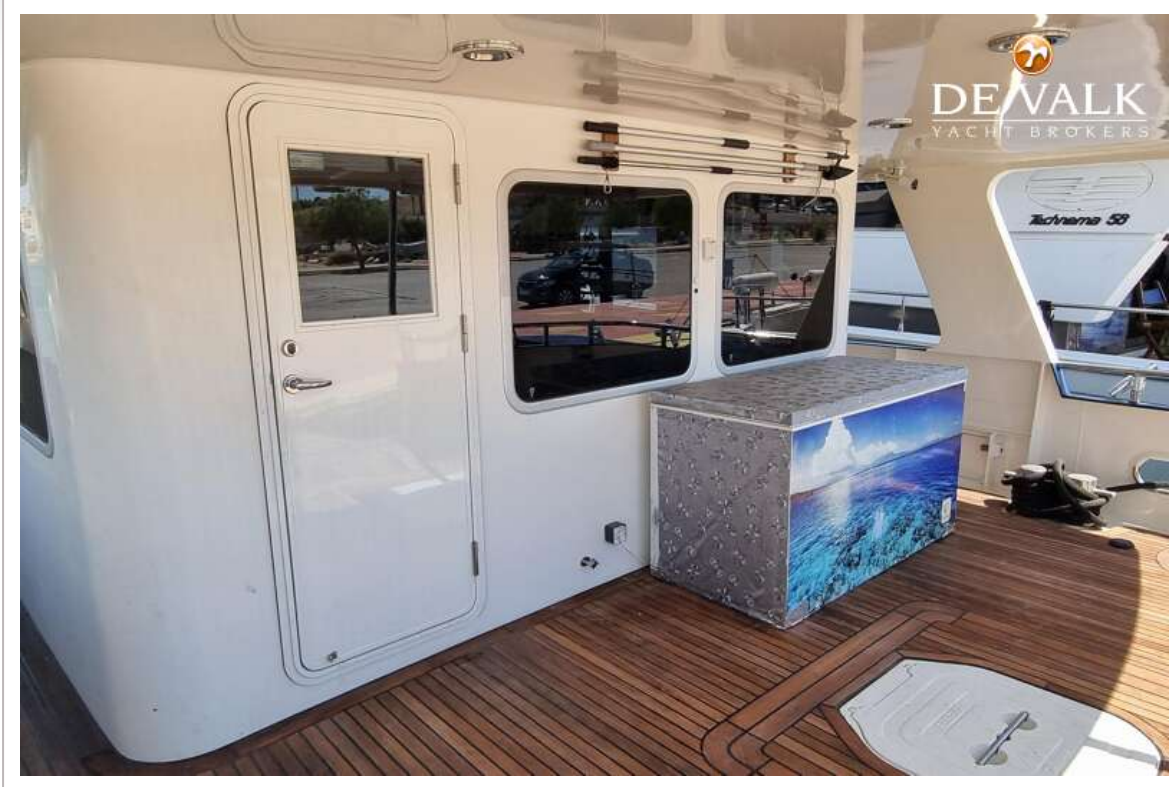
# VRIPACK 69 EXPEDITION TRAWLER



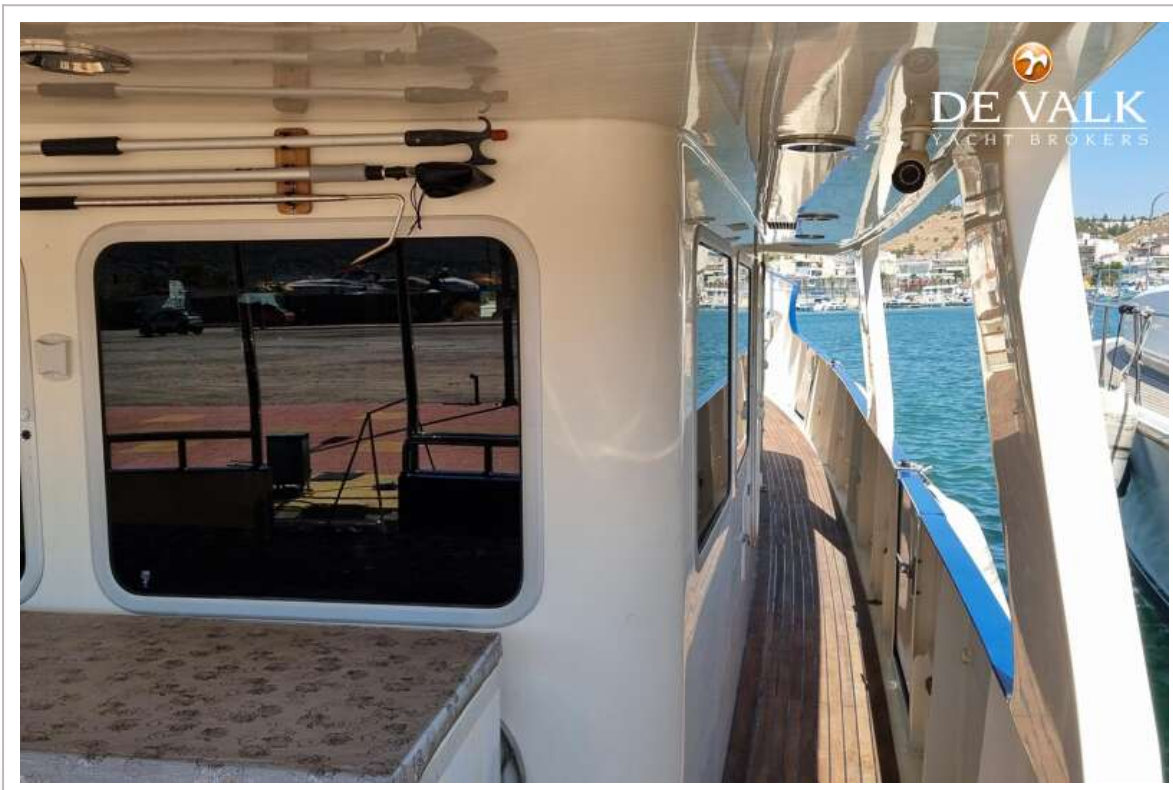
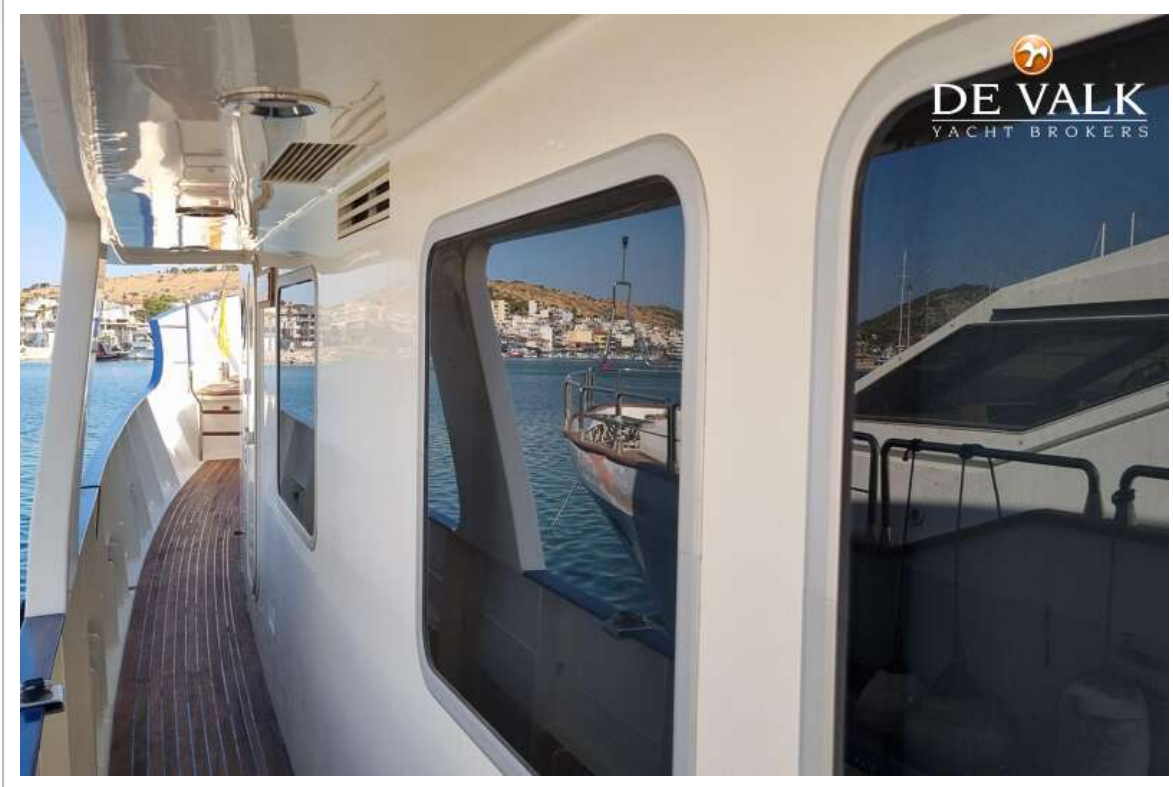
# VRIPACK 69 EXPEDITION TRAWLER



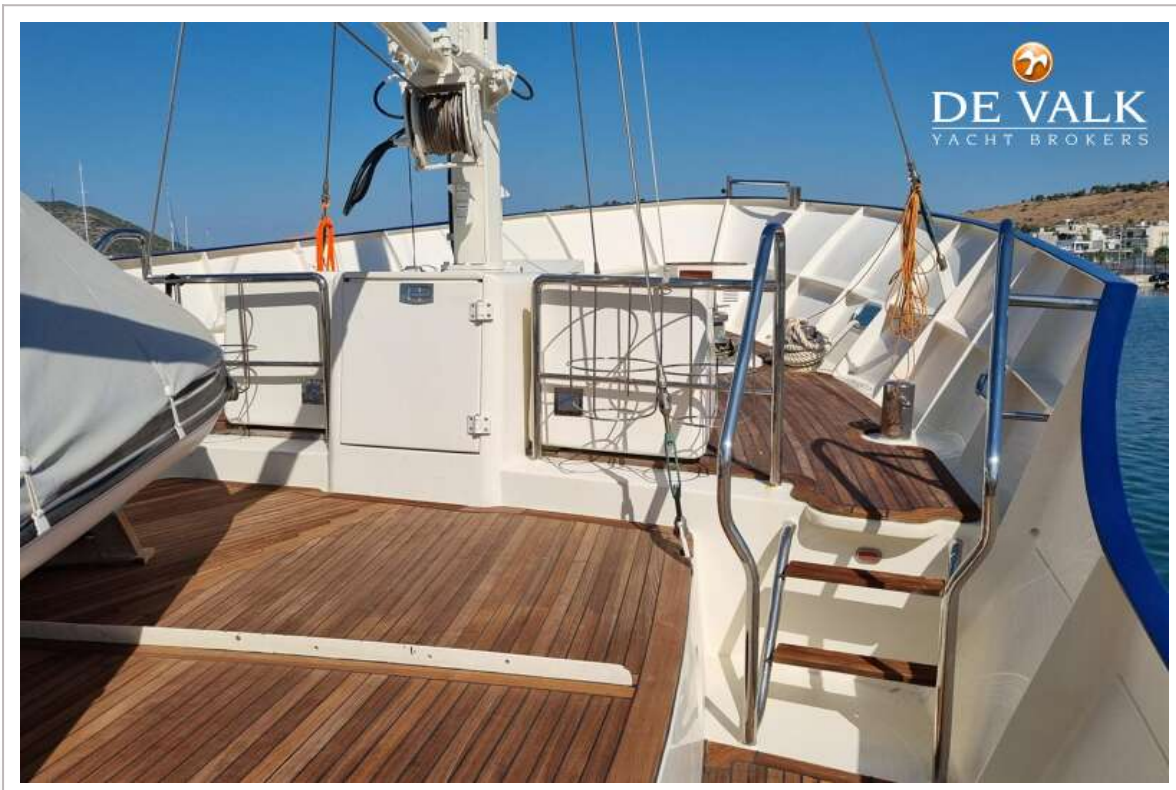
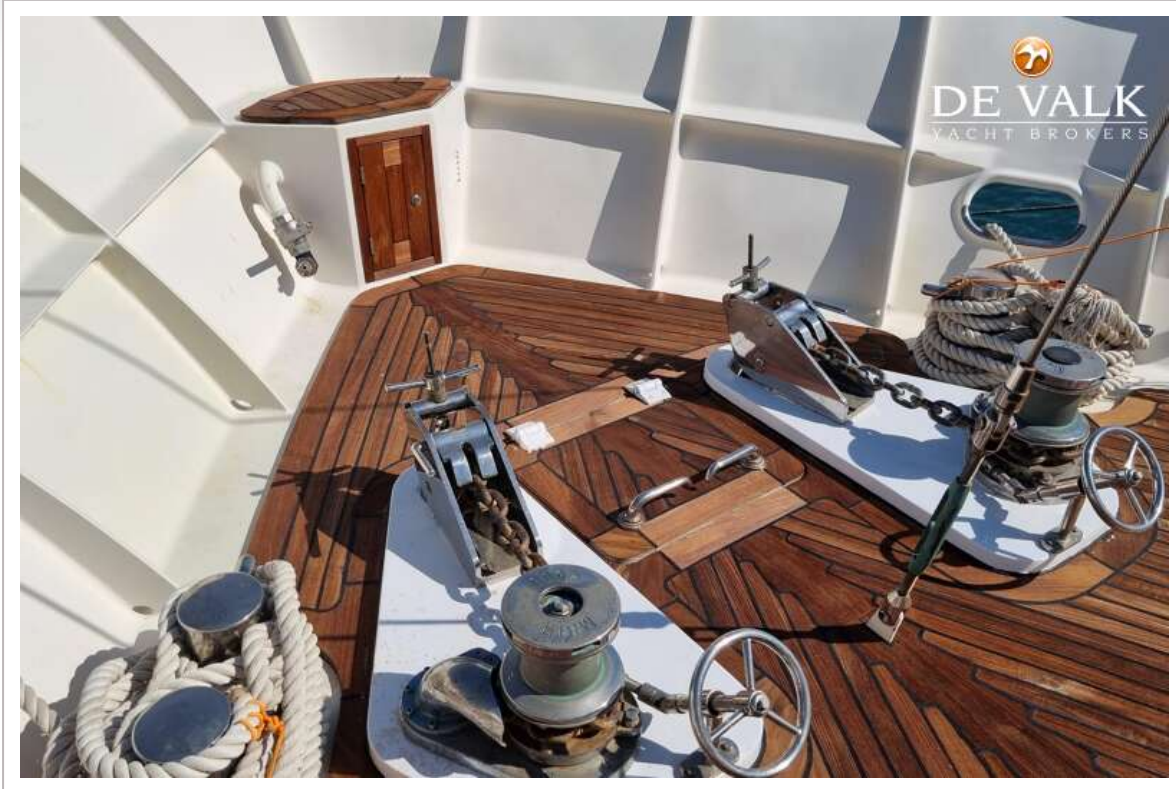
# VRIPACK 69 EXPEDITION TRAWLER



# VRIPACK 69 EXPEDITION TRAWLER



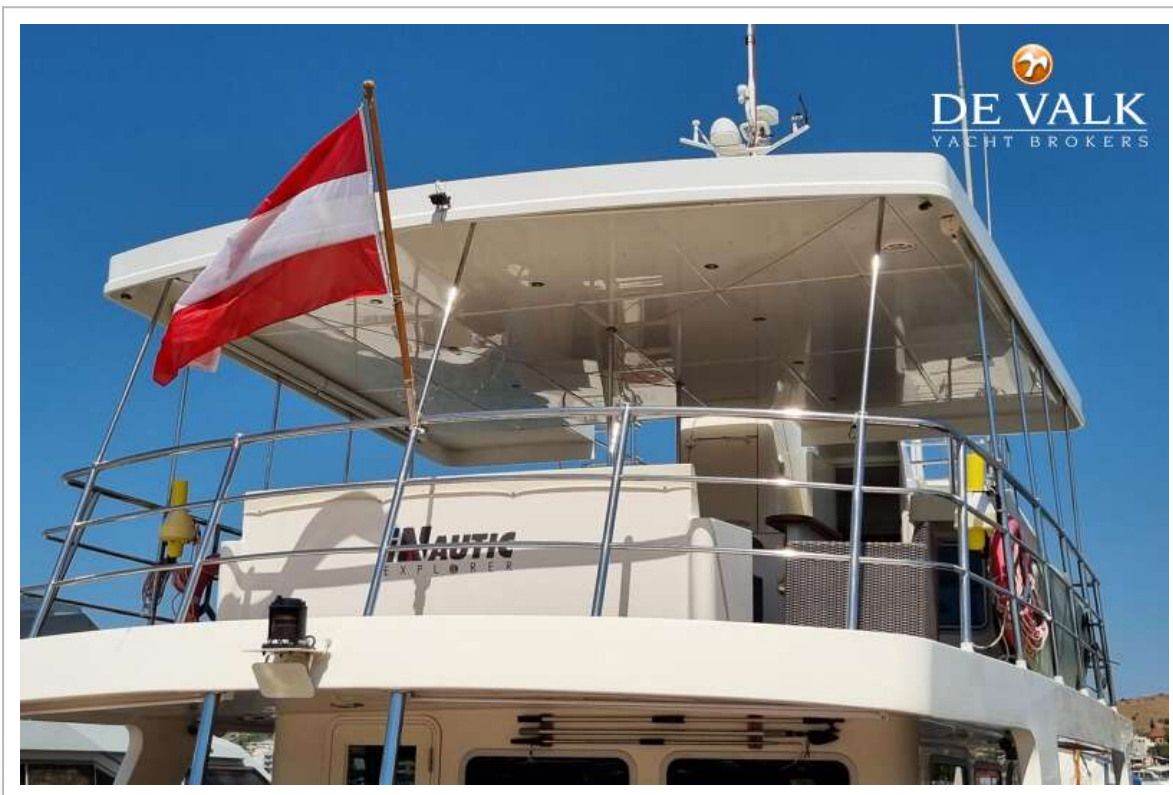
# VRIPACK 69 EXPEDITION TRAWLER



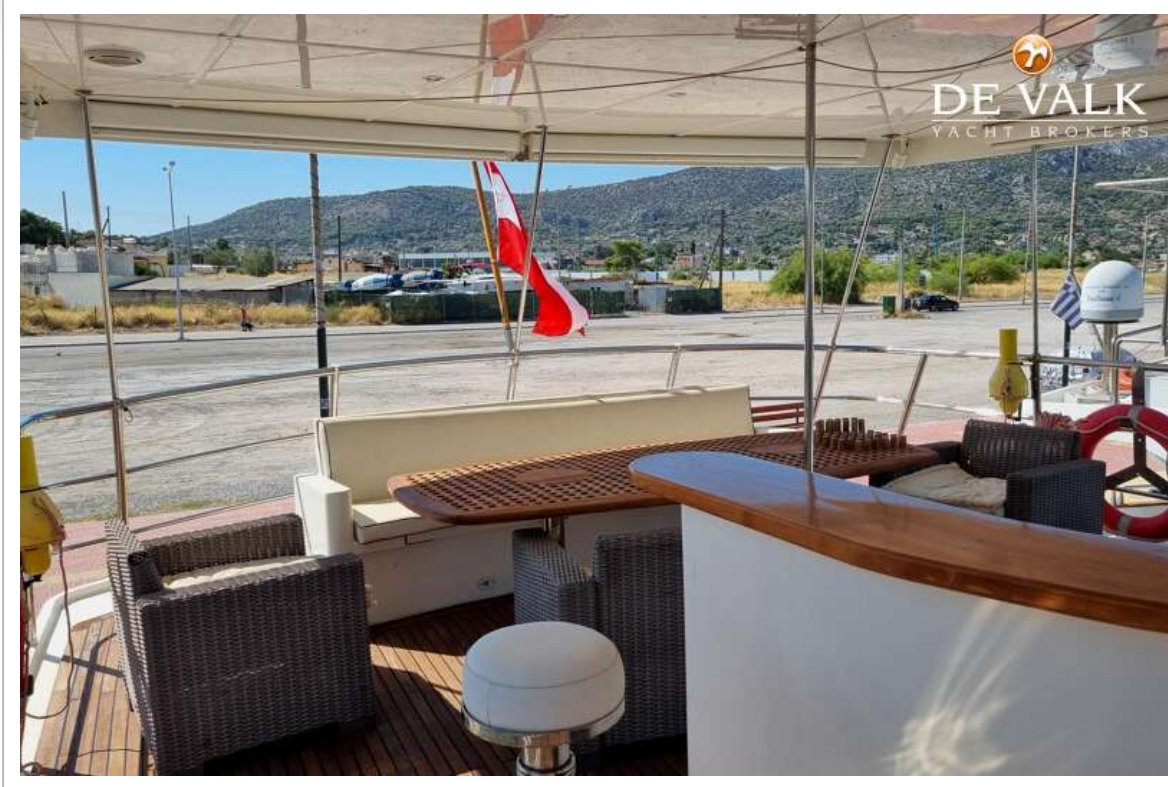
# VRIPACK 69 EXPEDITION TRAWLER



# VRIPACK 69 EXPEDITION TRAWLER



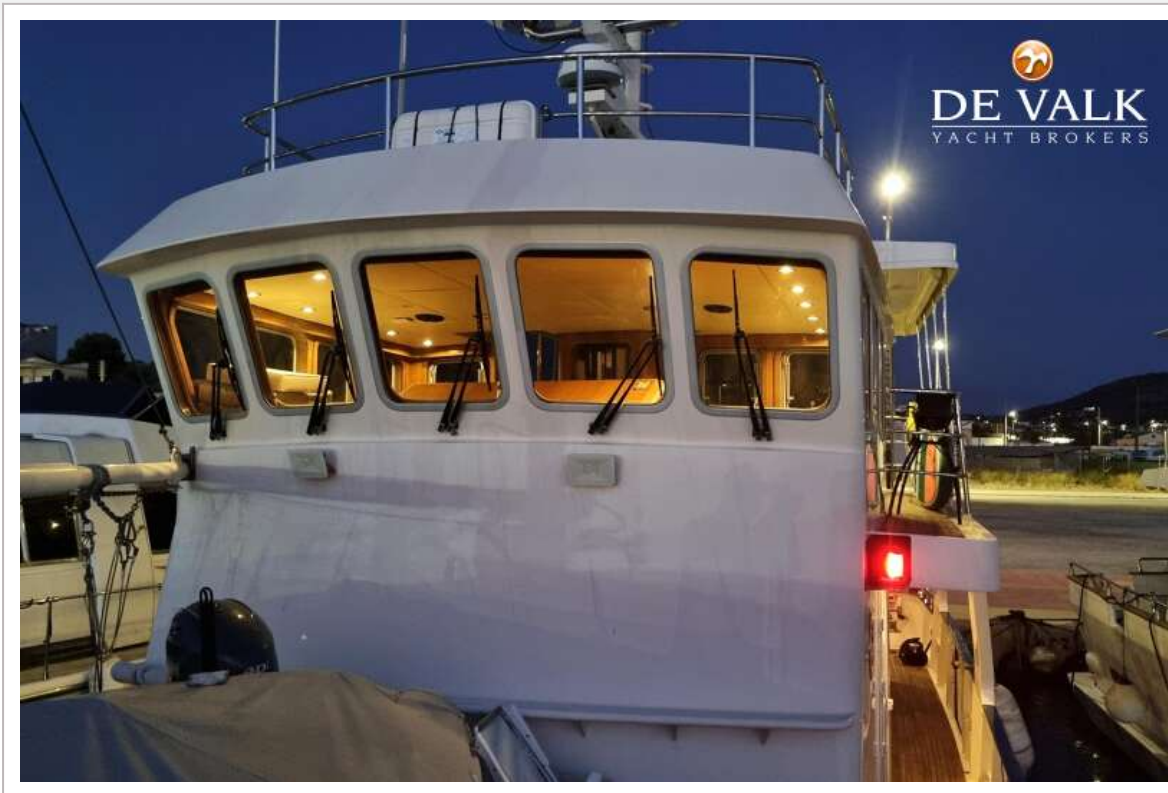
# VRIPACK 69 EXPEDITION TRAWLER



# VRIPACK 69 EXPEDITION TRAWLER



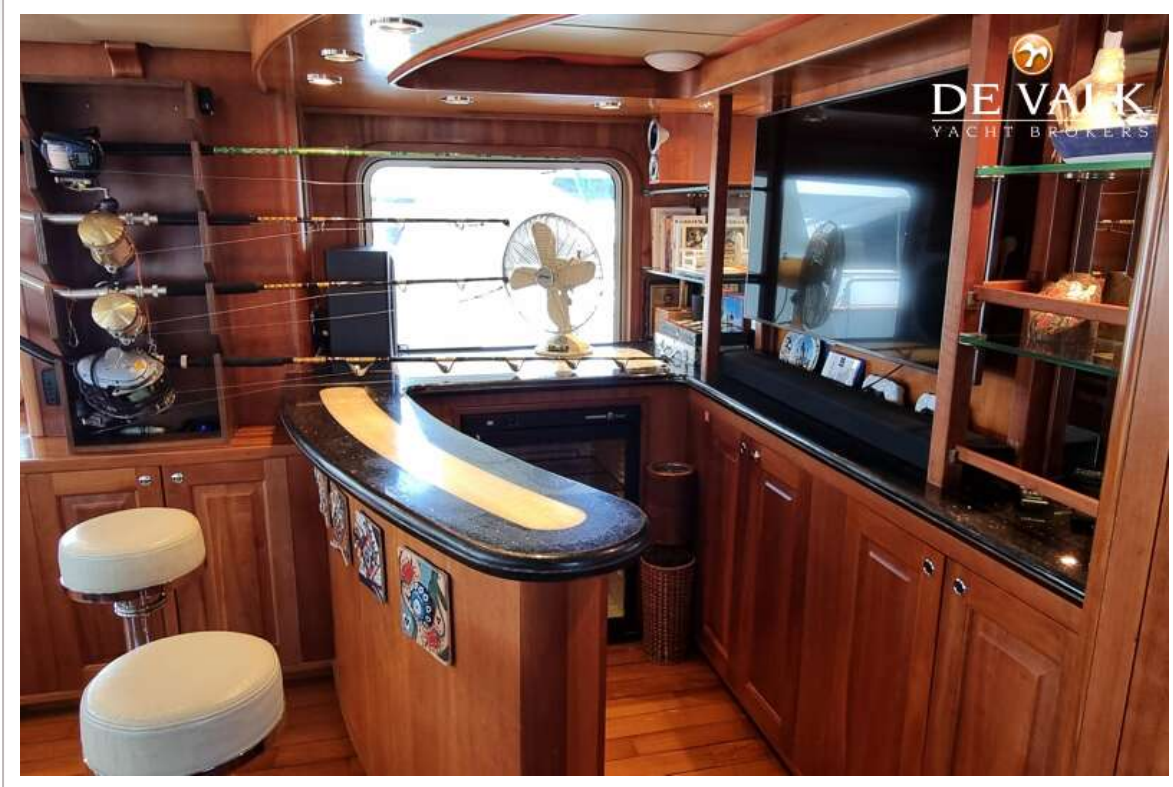
# VRIPACK 69 EXPEDITION TRAWLER



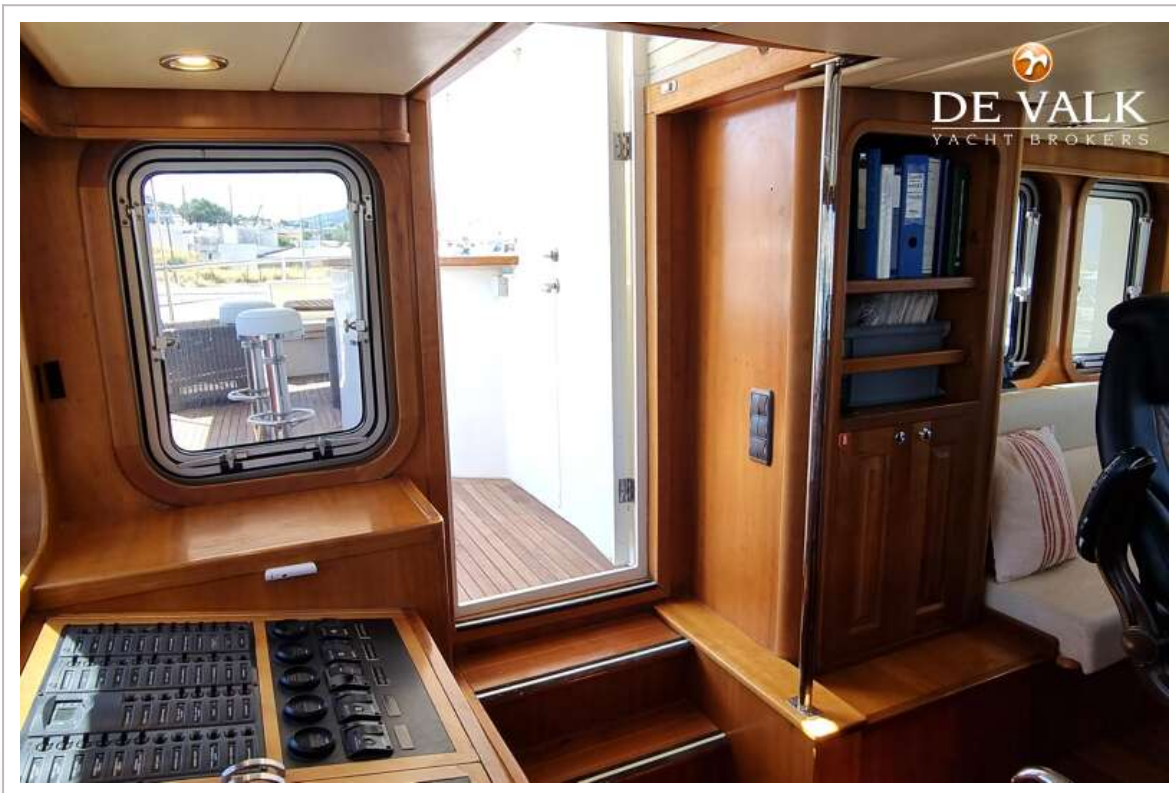
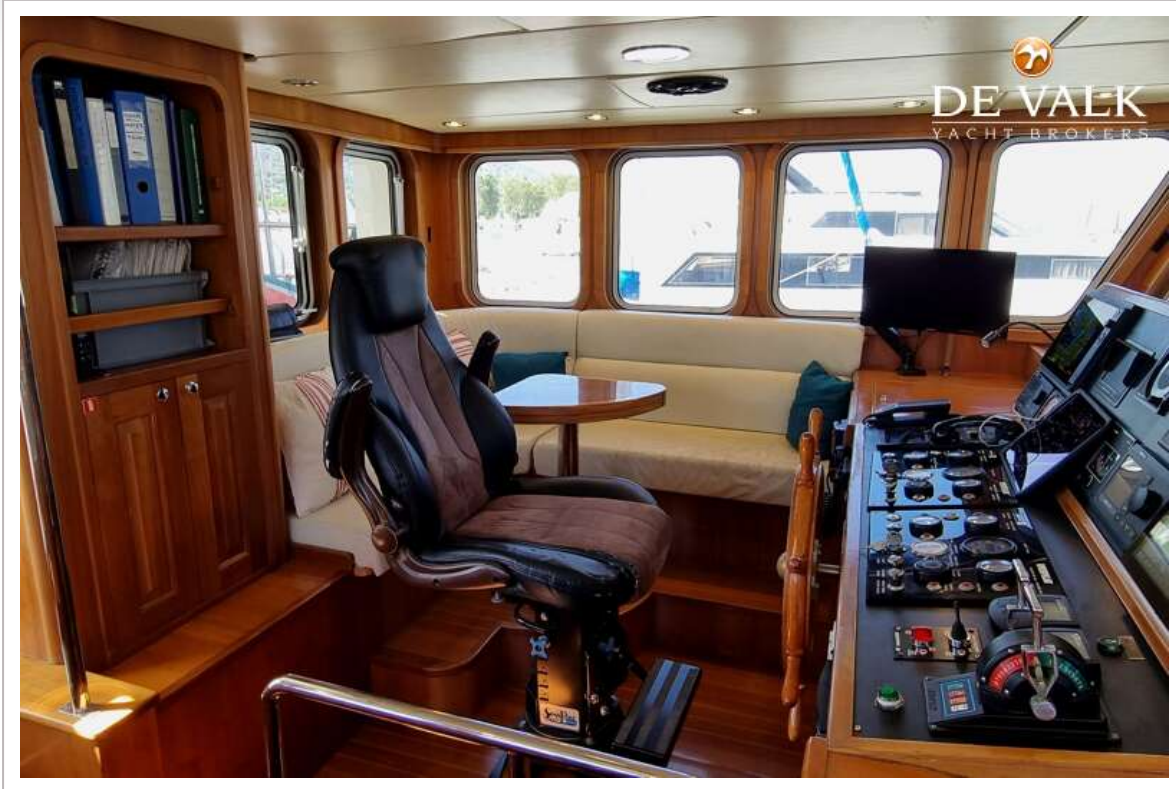
# VRIPACK 69 EXPEDITION TRAWLER



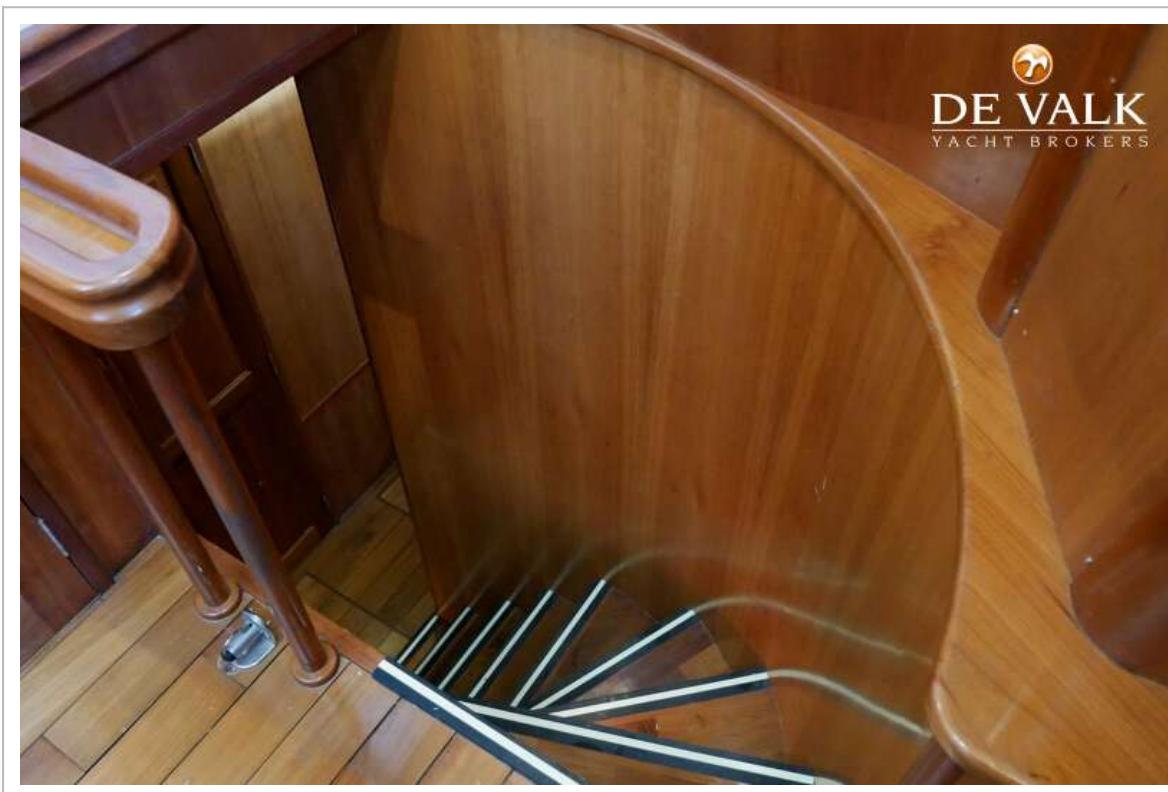
# VRIPACK 69 EXPEDITION TRAWLER



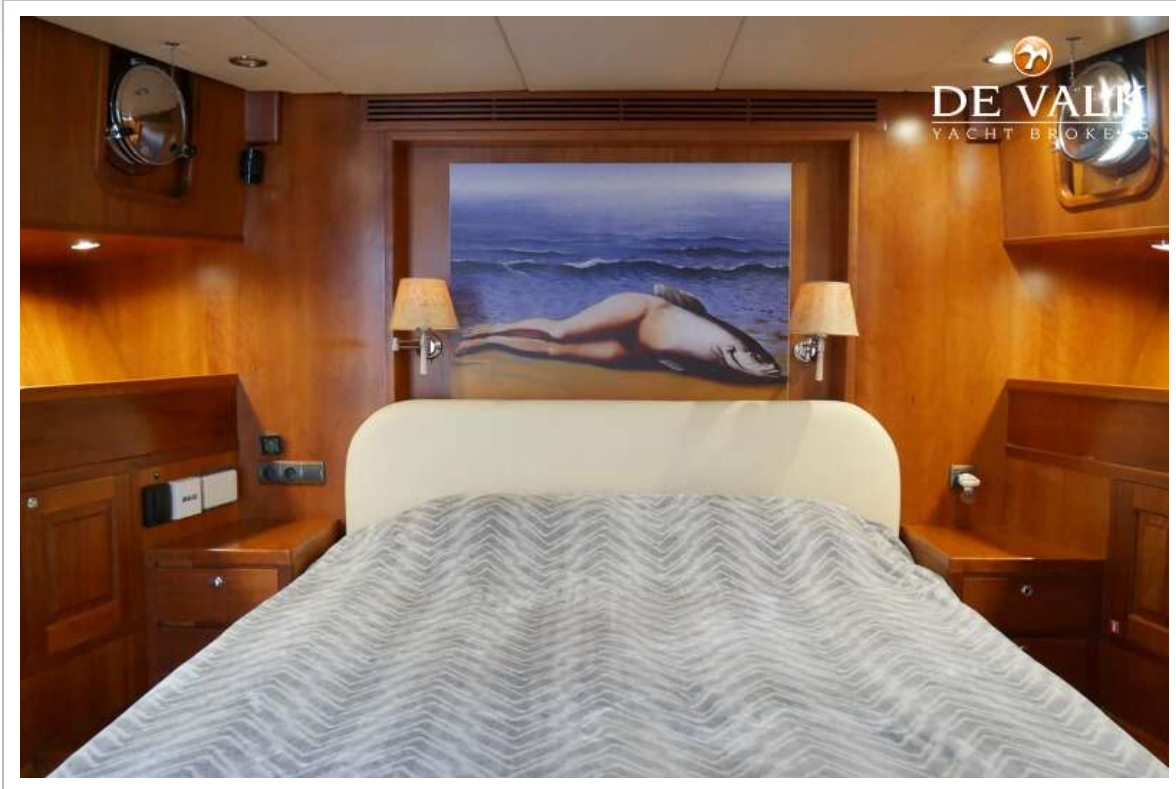
# VRIPACK 69 EXPEDITION TRAWLER



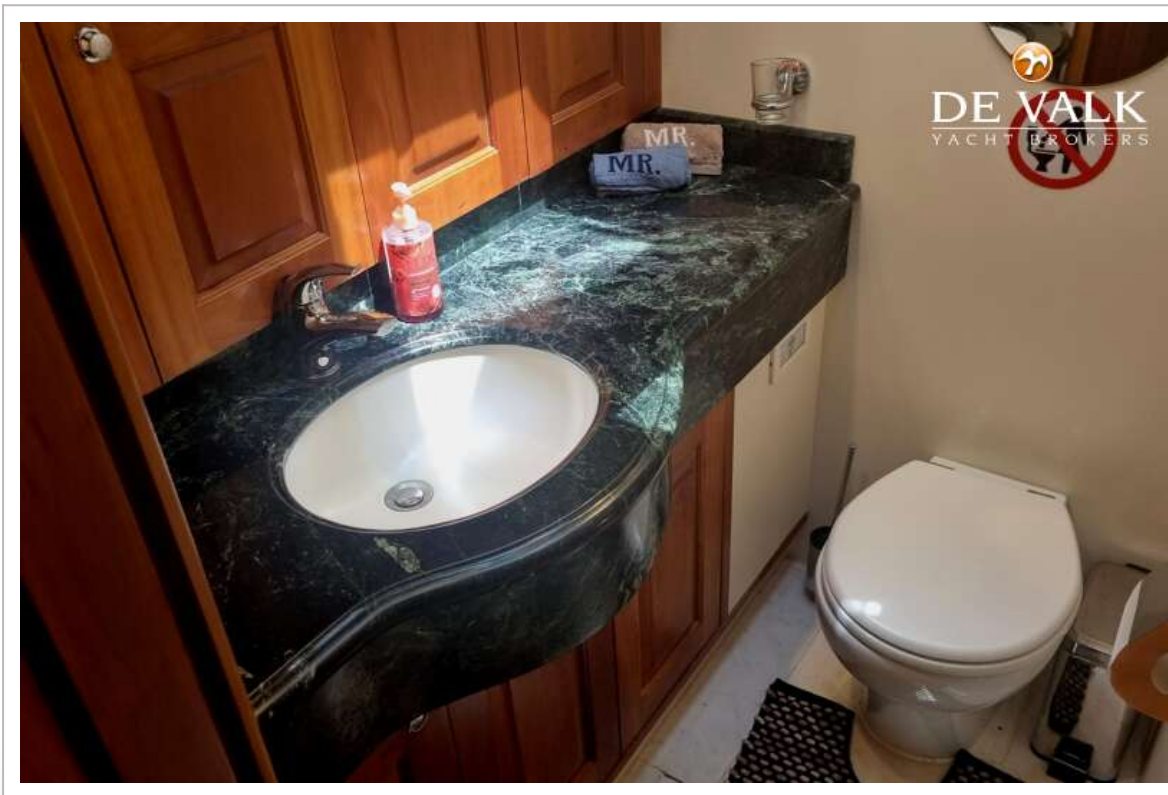
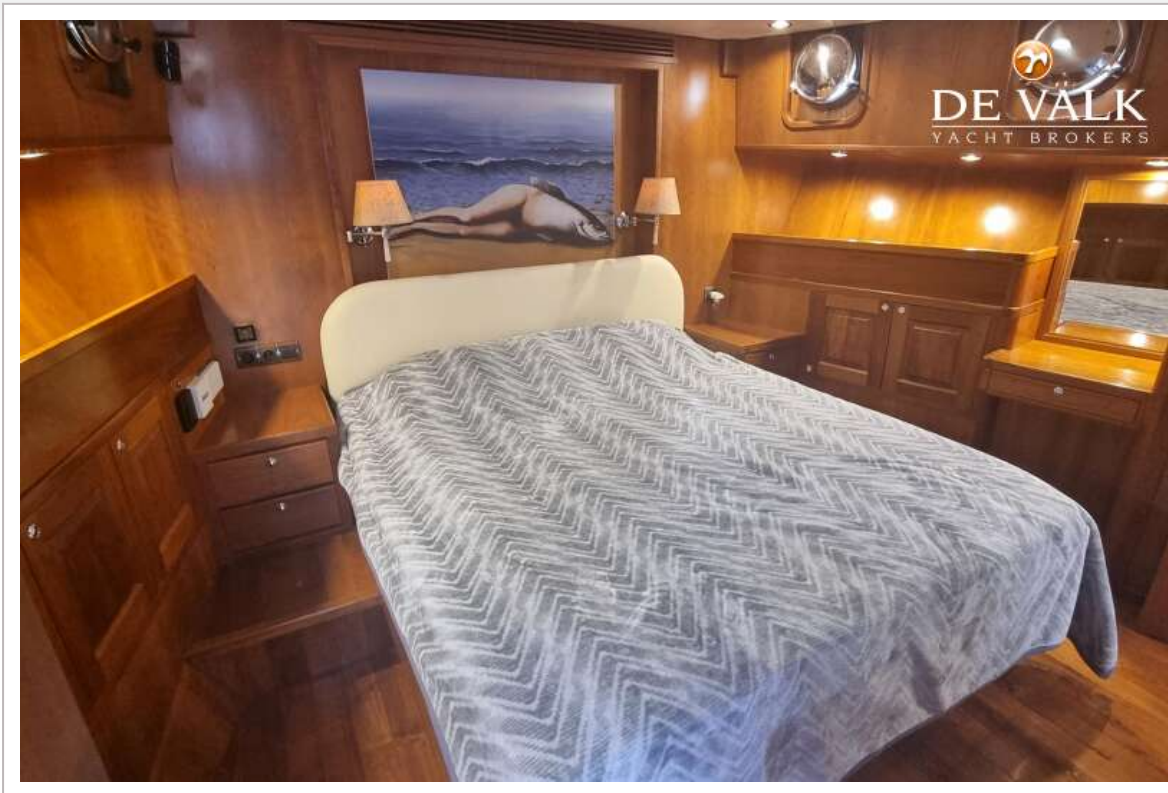
# VRIPACK 69 EXPEDITION TRAWLER



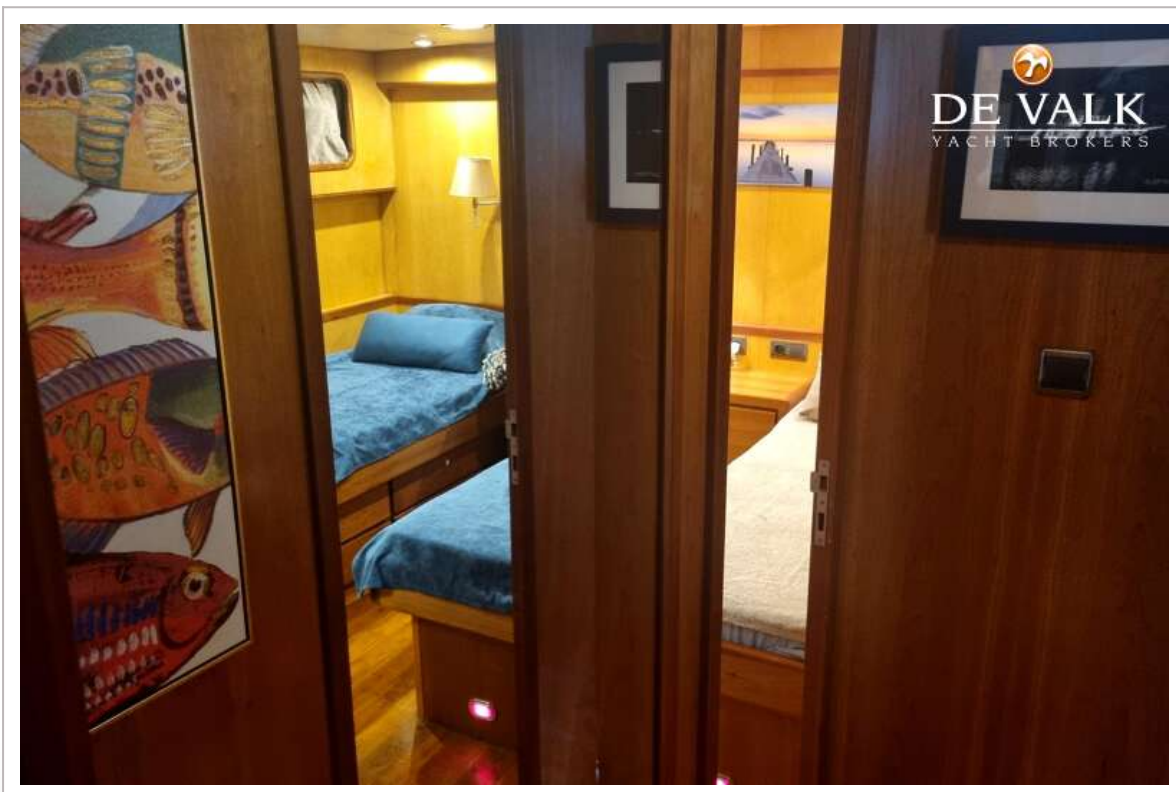
# VRIPACK 69 EXPEDITION TRAWLER



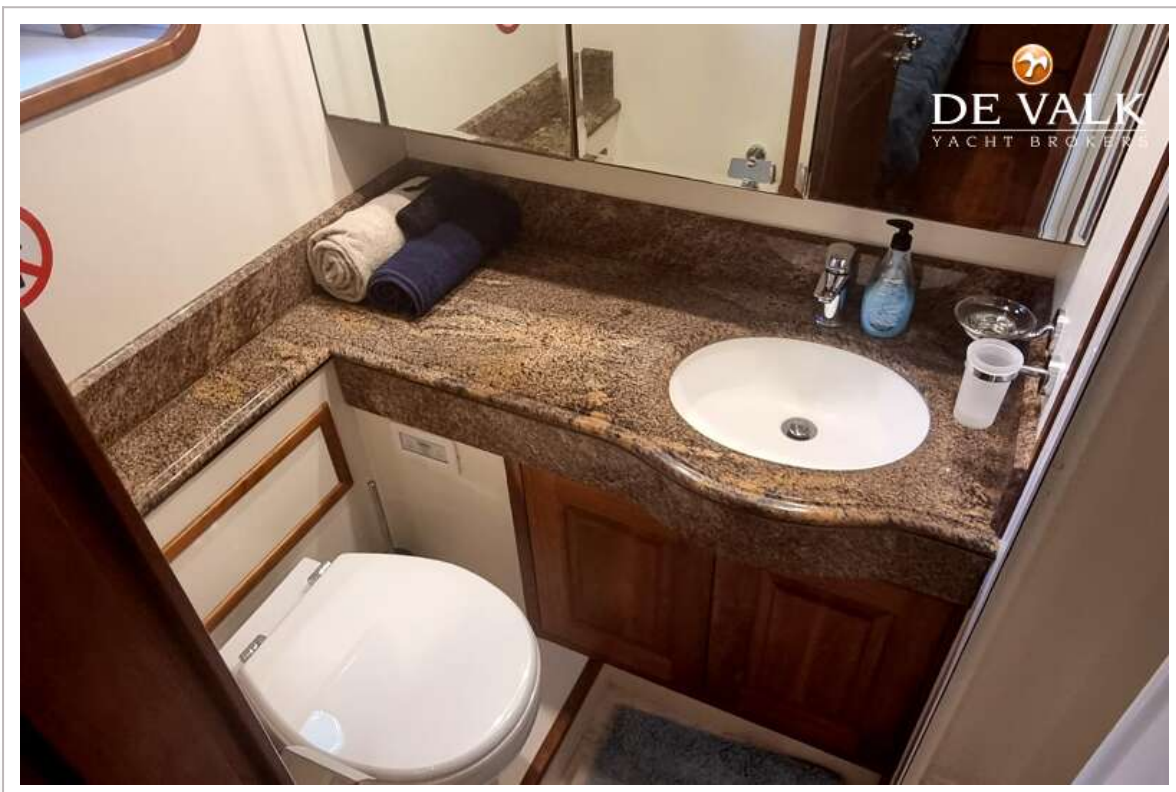
# VRIPACK 69 EXPEDITION TRAWLER



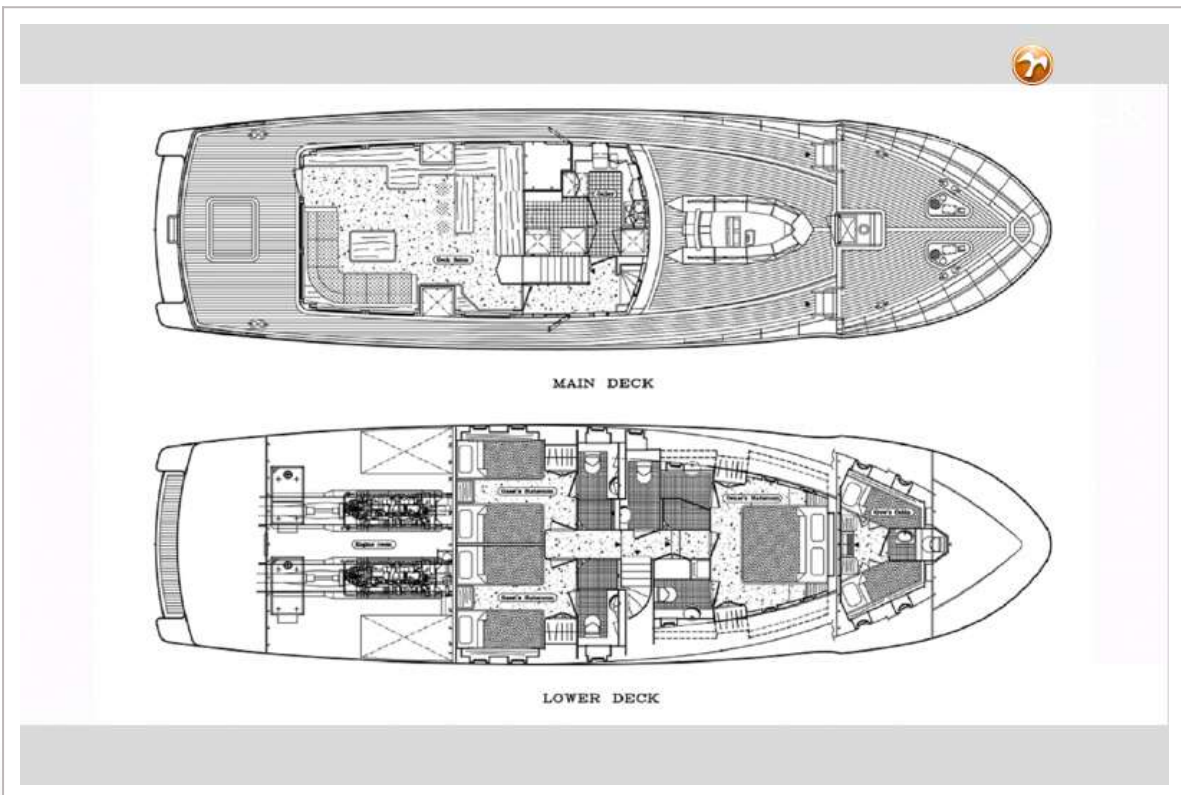
# VRIPACK 69 EXPEDITION TRAWLER



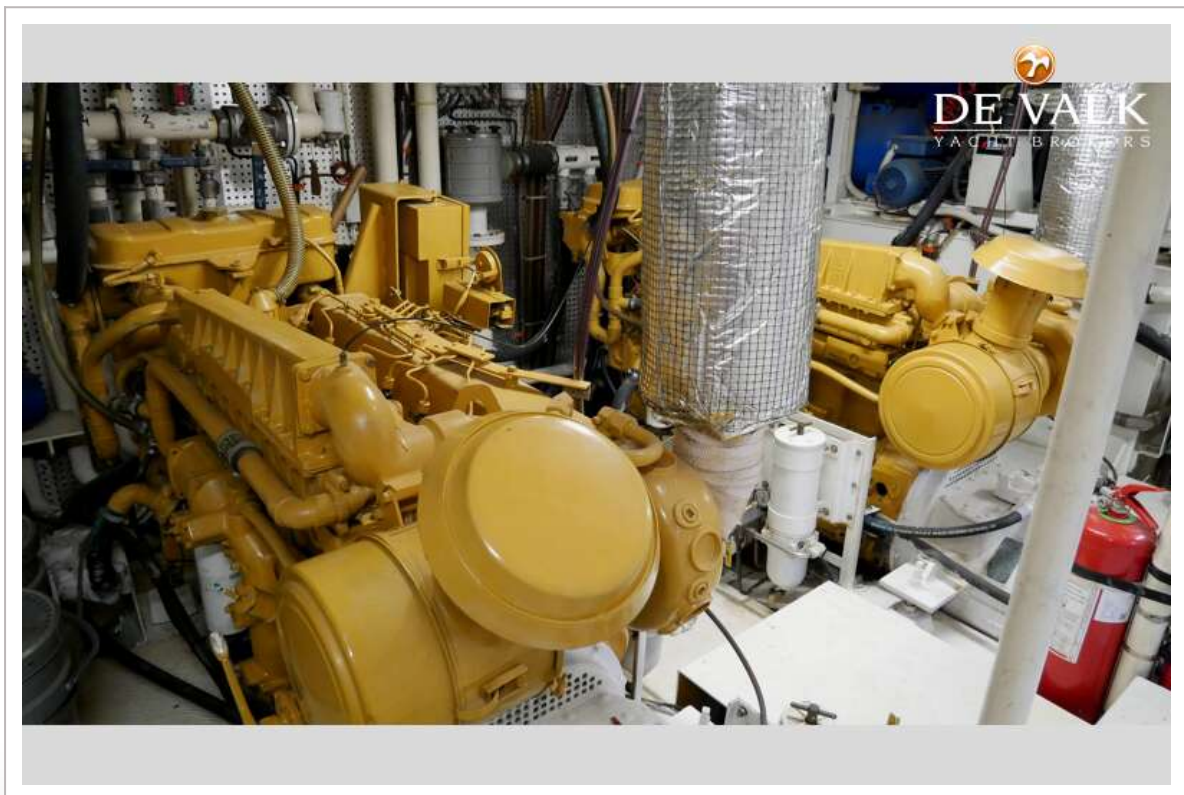
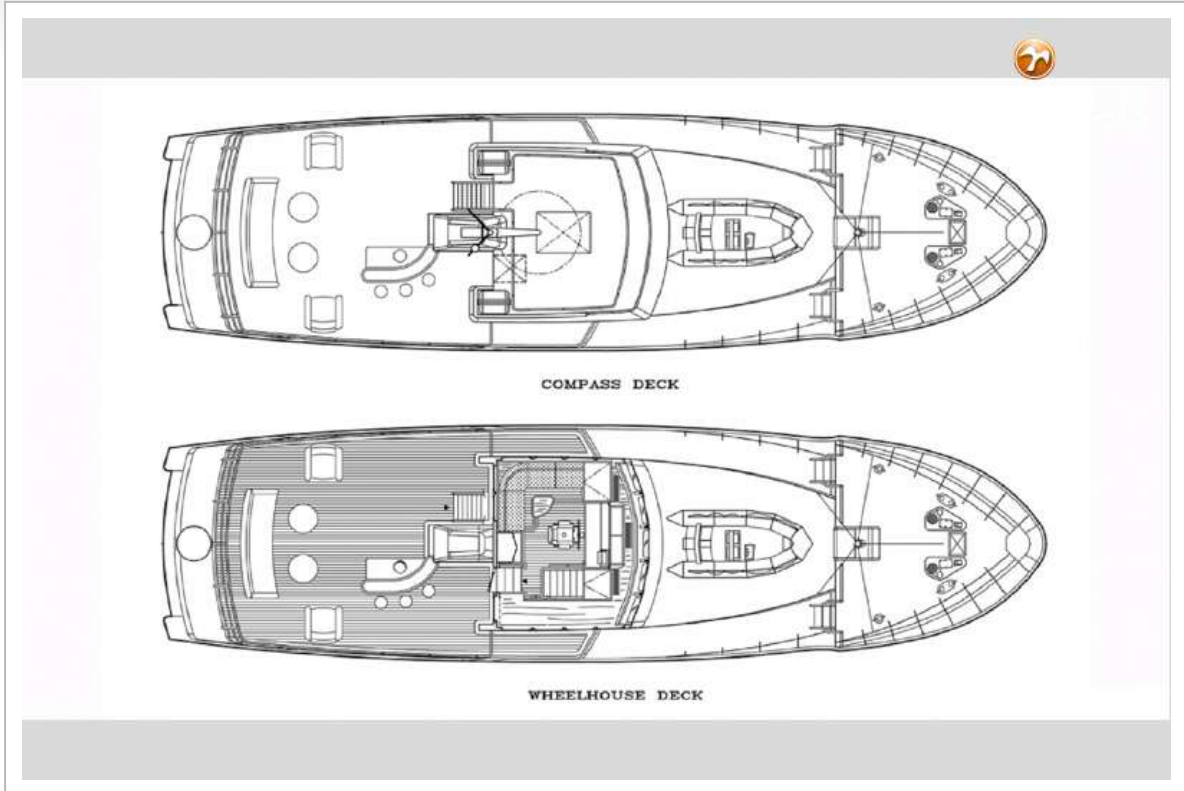
# VRIPACK 69 EXPEDITION TRAWLER



# VRIPACK 69 EXPEDITION TRAWLER



# VRIPACK 69 EXPEDITION TRAWLER



# VRIPACK 69 EXPEDITION TRAWLER

