



DE VALK  
YACHT BROKERS

KOOPMANS 40



DE VALK  
YACHT BROKERS

BROKERAGE | CHARTER | BERTHS | FINANCE | INSURANCE | YACHT MANAGEMENT

## BROKER'S COMMENTS

This Koopmans 40 steel yacht makes every sailor's heart beat faster. This precious beauty is called Jamie and custom-made according to the requirements of her owner. Every detail was very well thought out making Jamie unique and special – a one of a kind sailor's dream. Jamie lies in Palma de Mallorca and is so well-maintained that she looks like brand new – fully equipped and ready to sail the world to experience great adventures. This treasure is offered by De Valk Palma exclusively and viewing highly recommended! Book your appointment quickly!

*Oliver Stehula*

## SPECIFICATIONS

<b>Dimensions</b>	12.55 x 3.82 x 2.00 (m)	<b>Builder</b>	Pedro Boat Kft.
<b>Built</b>	2014	<b>Cabins</b>	2
<b>Material</b>	Steel	<b>Berths</b>	4
<b>Engine(s)</b>	1 x YANMAR 4JH4-TE diesel	<b>Hp/Kw</b>	75.00 (hp), 55.20 (kw)
<b>Asking price</b>	sold (VAT )	<b>Lying</b>	at sales office

## CONTACT

<b>Sales office</b>	De Valk Palma	<b>Telephone</b>	+34 971 40 29 11
<b>Address</b>	Port. Cala Nova, Avda. Joan Miro, 327 07015 Palma de Mallorca ES	<b>E-mail</b>	palma@devalk.nl

## DISCLAIMER

These particulars are given in good faith as supplied but cannot be guaranteed.



## GENERAL

Model	KOOPMANS 40
Type	sailing yacht
LOA (m)	12,55
Beam (m)	3,82
Draft (m)	2,00
Year built	2014
Builder	Pedro Boat Kft.
Country	Hungaria
Designer	Koopmans Designs
Displacement (t)	14
Ballast (tonnes)	lead in steel 4
CE norm	A
Hull material	steel
Hull colour	beige
Hull thickness (mm)	6/5/4 mm
Hull shape	round-bilged
Keel type	fin keel
Superstructure material	steel
Superstructure (mm)	4mm
Deck plate thickness (mm)	5mm
Deck material	steel
Deck finish	Treadmaster
Superstructure deck finish	paint
Cockpit deck finish	teak
Antifouling (year)	2023
Dorades	5x
Window frame	aluminium
Window material	polycarbonate
Deckhatch	yes
Insulation	foam



Radar arch	non collapsible
Fuel tank (litre)	steel 400 litres
Level indicator (fuel tank)	VDO 52 mm
Fuel daytank (litre)	stainless steel 60 litres
Level indicator (daytank)	yes
Freshwater tank (litre)	steel 1x 240l + 1x 160l
Level indicator (freshwater)	yes
Blackwater tank (litre)	100
Level indicator (blackwater)	Pressure sensor
Blackwater tank extraction	deck extraction + uw line
Wheel steering	mechanical Jefa transmisson steering
Emergency tiller	yes

## ACCOMMODATION

Cabins	2
Berths	4
Interior	teak
Floor	wood
Saloon	yes
Heating	diesel ducted hot air Webasto Air Top Evo M
Chart table	yes
Aft Cabin	yes
Convertible berth	Two with leesails
Galley	yes
Countertop	corian
Sink	stainless steel Double
Cooker	calor gas
Oven	yes
Gas alarm	yes
Fridge	Coolmatic CS-NC- 15
Hot water system	220V + engine 40 litres 230V/750W



Water pressure system	electrical Jabsco Sensor MAX 14
Manual and/or foot pump	Salt water
Owners cabin	double bed
Bed length (m)	2,00
Wardrobe	hanging/drawers/shelves
Bathroom	shared
Toilet	shared
Toilet system	electric
Wash basin	in the bathroom
Shower	shared
Guest cabin 1	single bed 2x
Bed length (m)	1,95
Wardrobe	hanging/drawers/shelves

## MACHINERY

No of engines	1
Make	YANMAR
Type	4JH4-TE
HP	75
kW	55.20
Fuel	diesel
Year installed	2013
Engine hours	477
Engine cooling system	freshwater heat exchanger
Drive	shaft
Shaft seal	Volvo
Gearbox	mechanical ZF 30 M
Engine controls	bowden cable
Bowthruster	electric Side Power SE 100/185 T
Exhaust	watercooled
Propeller type	folding Maxprop



<b>Propeller blades</b>	Three blade
<b>Propeller shaft material</b>	stainless steel
<b>Shaft lubrication</b>	water
<b>Manual bilge pump</b>	yes
<b>Electric bilge pump</b>	yes
<b>Bilge alarm</b>	yes
<b>Electrical installation</b>	Philippi
<b>Start battery</b>	1x 50 Ah Gel, new in 01/2020
<b>Service battery</b>	4 x 110 Ah Gel, new in 04/2021
<b>Bowthruster battery</b>	2 x108 Ah AGM, new in 04/2021
<b>Windlass battery</b>	Same as Bowthruster
<b>Battery monitor</b>	Philippi BTM 2 with NMEA 2000 interface new in 12/2021
<b>Battery charger/inverter</b>	Victron Energy Multi Plus 12V/3000VA/120Amp
<b>Solar panel</b>	Victron Energy VSP130M-12V, 130 W-12V
<b>Shorepower</b>	with cable
<b>Insulation transformer</b>	Victron Energy Isolation Transformer 3600W 115/230V, new 01/2020
<b>Watermaker</b>	New Katadyn Power Survivor 40E, need fitting
<b>Extra info</b>	Sterling Pro Reg B Advanced Alternator Regulator
<b>Extra info</b>	2nd Alternator 12V/ 80A
<b>Extra info</b>	New big Engine service from 14/12/2023

## NAVIGATION

<b>Compass</b>	Jefa Olympic
<b>Depth sounder/log</b>	Raymarine ST60
<b>Windset</b>	Raymarine ST60
<b>VHF</b>	Raymarine Ray 240 VHF
<b>VHF handheld</b>	I-Com
<b>Autopilot</b>	Raymarine Corepack SPX30, Raymarine ST 7002 control head
<b>Wind vane steering install.</b>	Hydrovane, new in 2019
<b>Rudder angle indicator</b>	Raymarine



<b>Radar</b>	Raymarine RD 418D
<b>Radar/GPS/plotter</b>	Raymarine E70
<b>Navtex</b>	Furuno Navtex NX-300
<b>AIS transceiver</b>	Raymarine AIS 650 class B Receiver / Transponder
<b>EPIRB</b>	McMurdo Smartfind Plus
<b>Navigation lights</b>	Lopolight, LED
<b>Searchlight</b>	yes
<b>Extra info</b>	SSB-Receiver/ Transmitter: I-com IC718,with isolated afterstay

## EQUIPMENT

<b>Fixed windscreen</b>	yes
<b>Sprayhood</b>	Quantum CB 40
<b>Bimini</b>	yes
<b>Cockpit cushions</b>	yes
<b>Cockpit table</b>	yes
<b>Boarding ladder</b>	yes
<b>Gangway</b>	yes
<b>Deck shower</b>	yes
<b>Anchor</b>	Spade S140 30 kg
<b>Anchor chain</b>	60 m galvanic
<b>Anchor 2</b>	Fortress 20 kg
<b>Windlass</b>	electrical Lewmar
<b>Dinghy</b>	Suzuki DS- 265
<b>Outboard</b>	Suzuki 5 HP
<b>Outboard support</b>	Steel
<b>Deck crane</b>	For Outboard
<b>Sea railing</b>	wire
<b>Life raft</b>	OCEAN SAFETY , 4 pers., Model OCEAN ISO, Typ ISO9650
<b>Life raft (pers)</b>	yes
<b>Lifejackets</b>	yes
<b>Safety harness</b>	yes



Horn	electric
Radar reflector	ECHOMAX ACTIVE XS Active-Dual Band Radar Reflector
Fenders	yes
Mooring lines	yes
Radio-cd player	yes
Speakers in cabin	yes
Fire extinguisher	yes

## RIGGING

Rigging	sloop-cutter Sail area to the wind 92 m2
Standing rigging	wire
Brand mast	Seldén
Material mast	aluminium
Spreaders	3 pairs
Mainsail	Quantum Sails, 37.2 m2,
Mainsail cover	yes
Fully battened mainsail	yes
Cutterstay	yes
Jib	Quantum sails 16.9 m2, with Furlex 200S
Genoa	Quantum sails 37.8 m2
Genoa furler	Furlex 300S
Gennaker	yes
Reefing System	slabreefing Three position
Backstay adjuster	mechanical Selden
Boomvang	mechanical and tackle Selden
Primary sheet winch	Lewmar 40
Secondary sheet winch	Lewmar 40
Genoa sheetwinches	2x Lewmar 50
Halyard winches	2x Lewmar 40 + 1x Lewmar 40 electrical
Multifunctional winches	Lewmar 40
Spi-pole	carbon





Isolated backstay

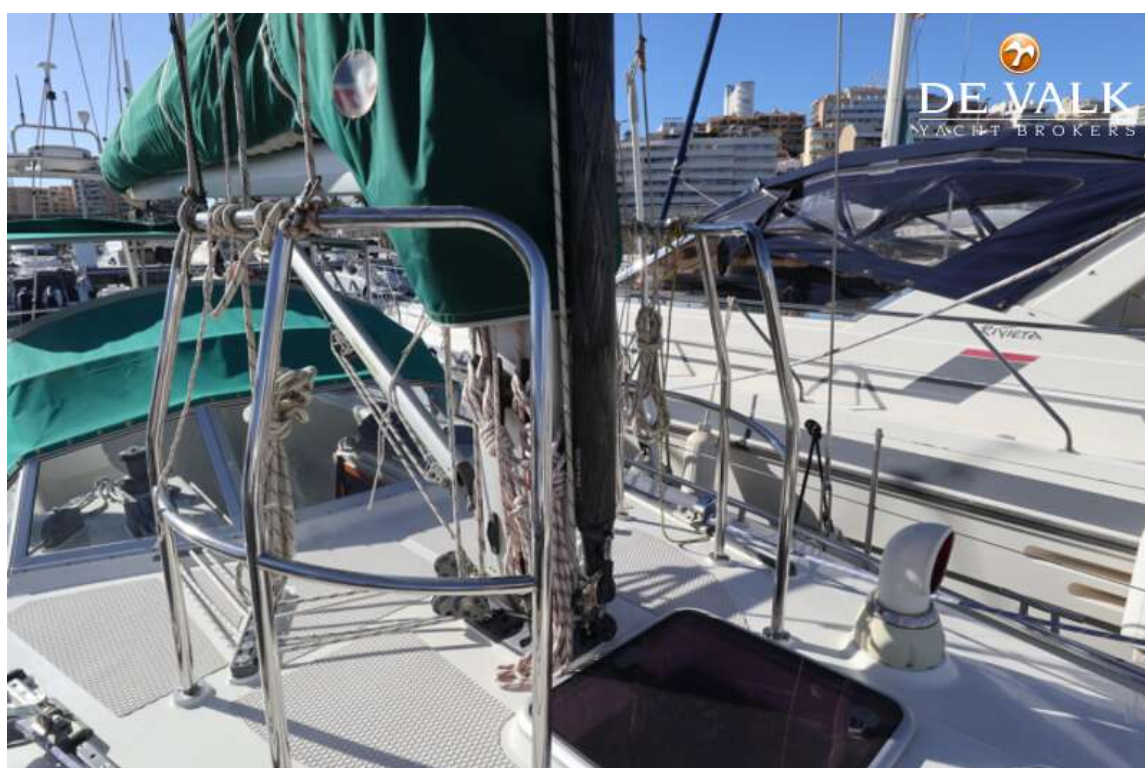
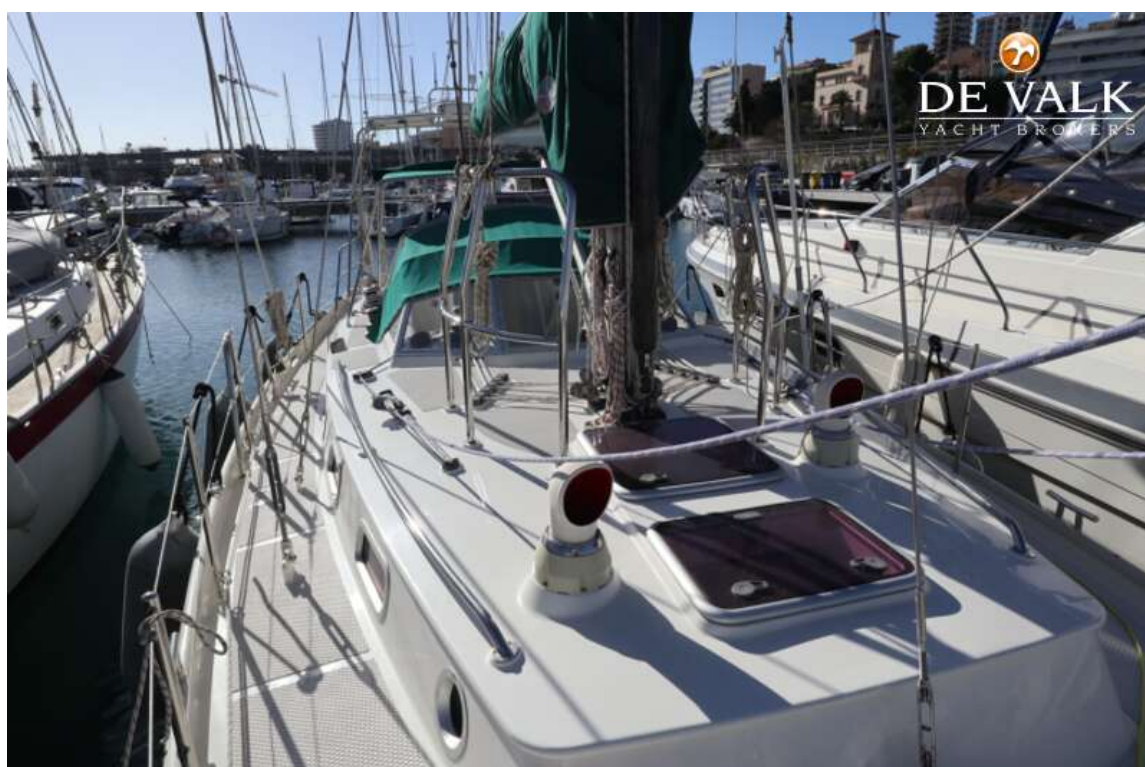
yes



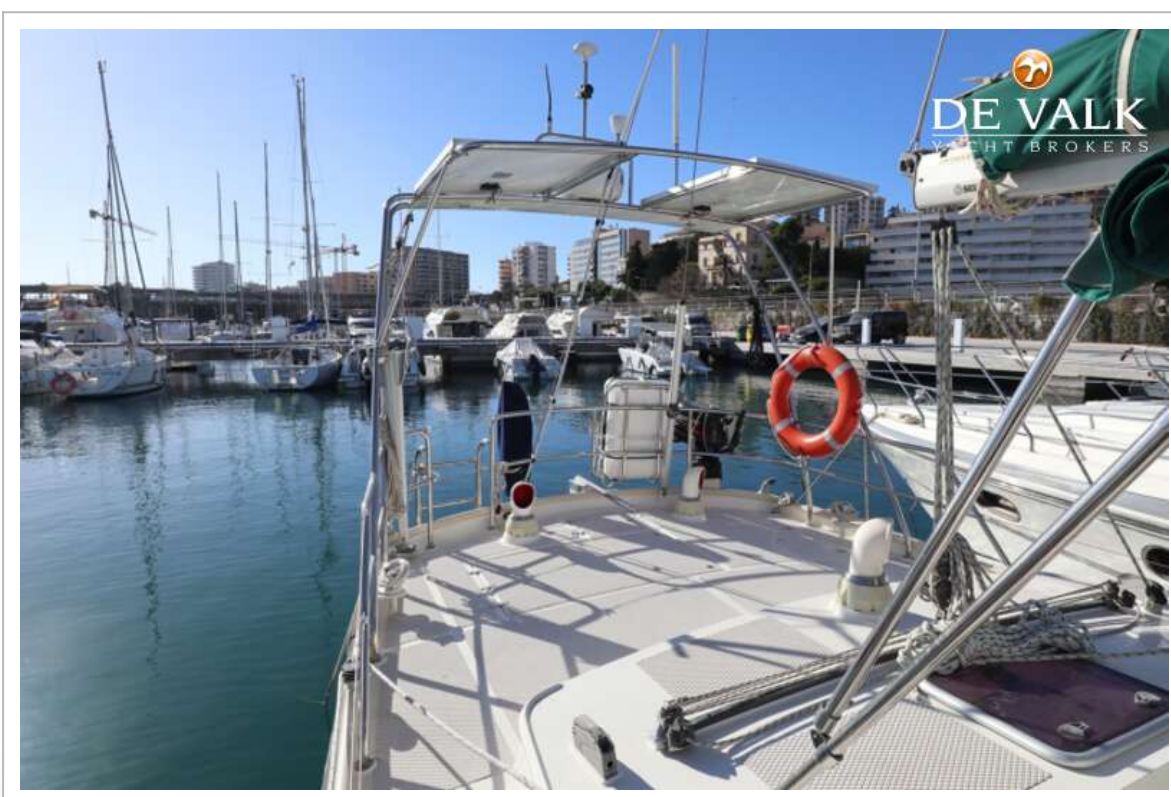
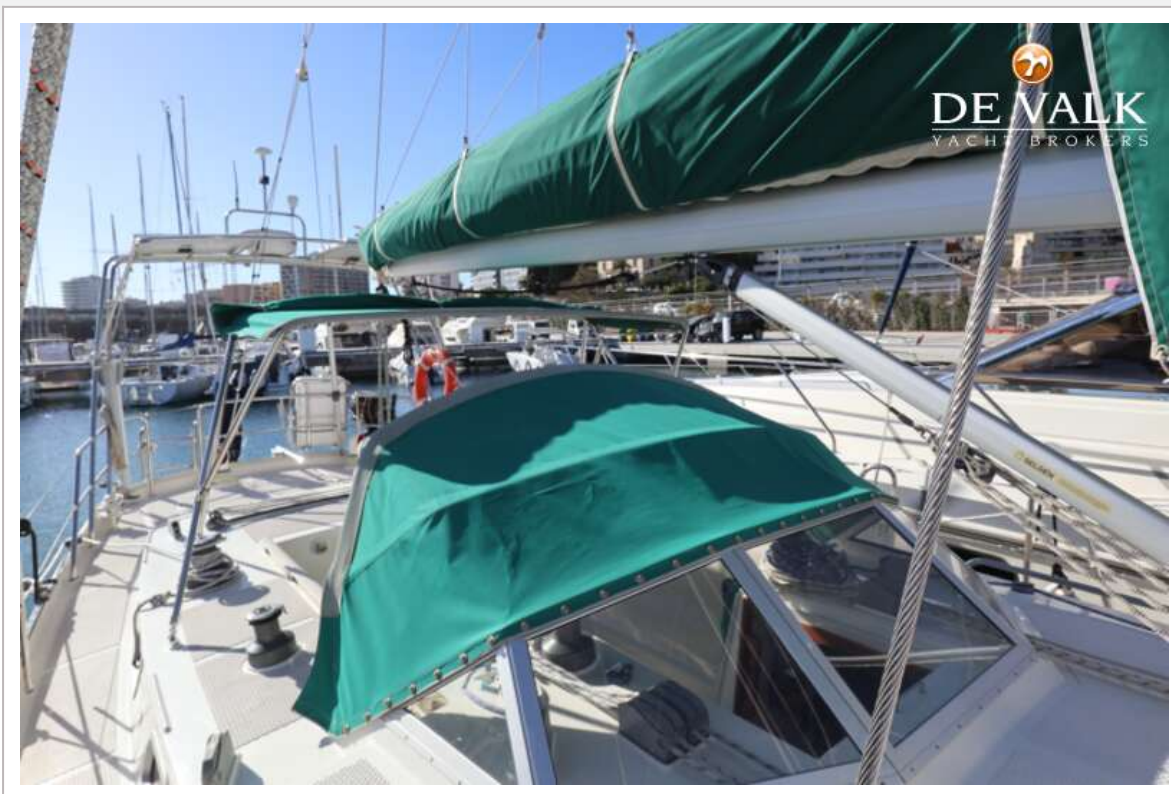
# KOOPMANS 40

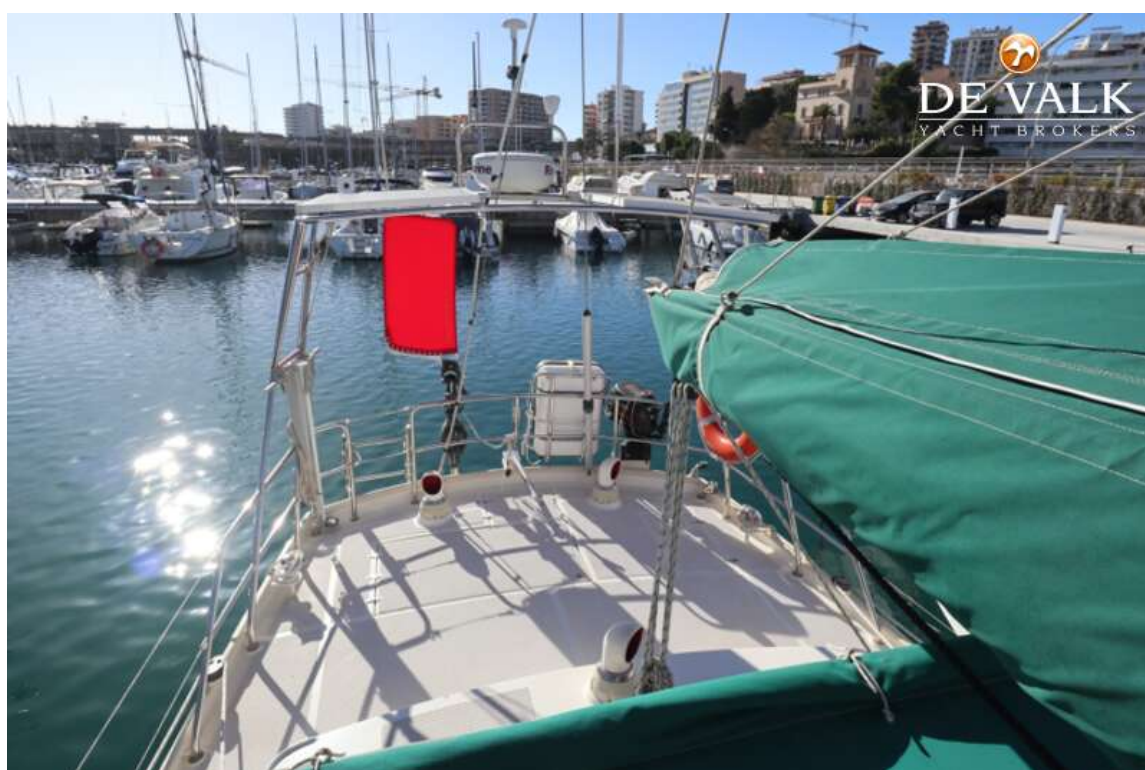
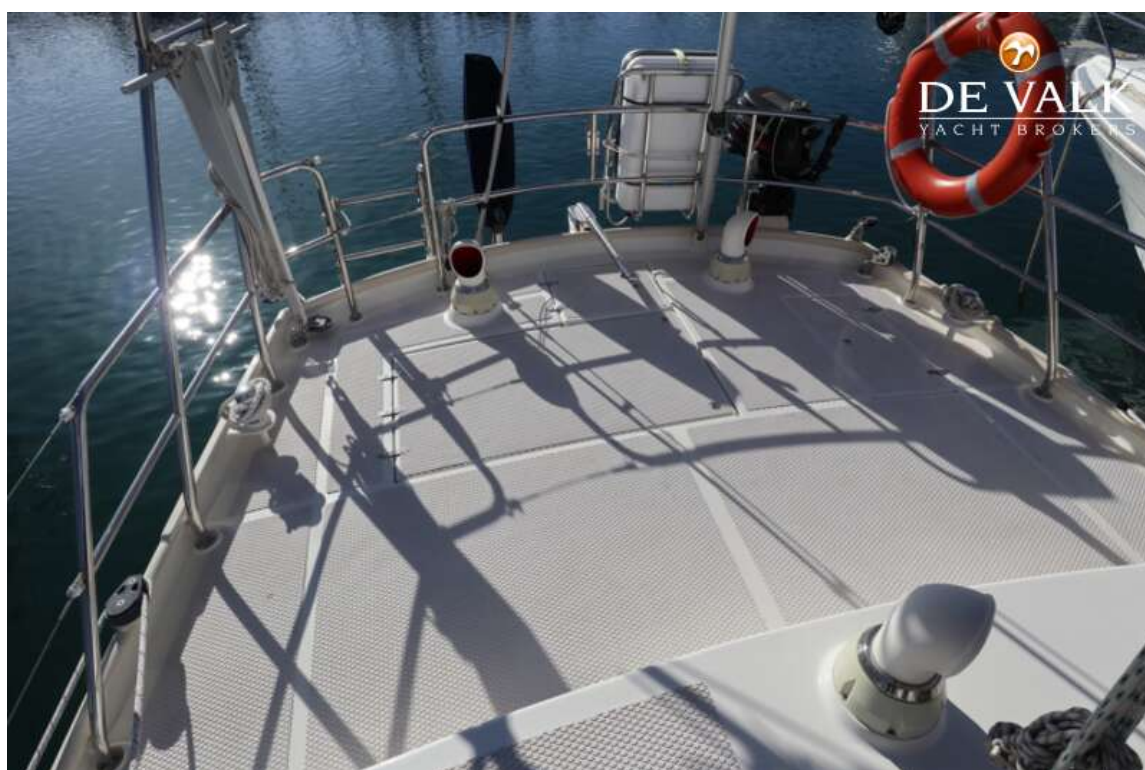


















# KOOPMANS 40

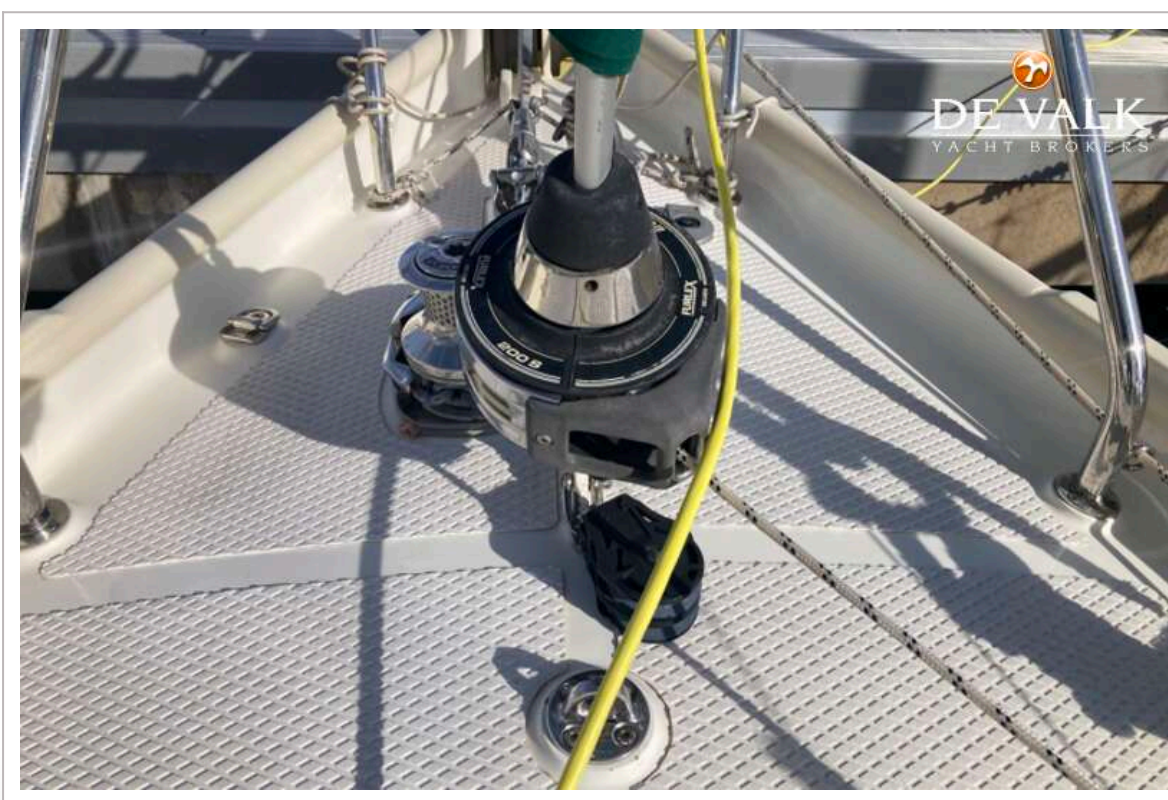














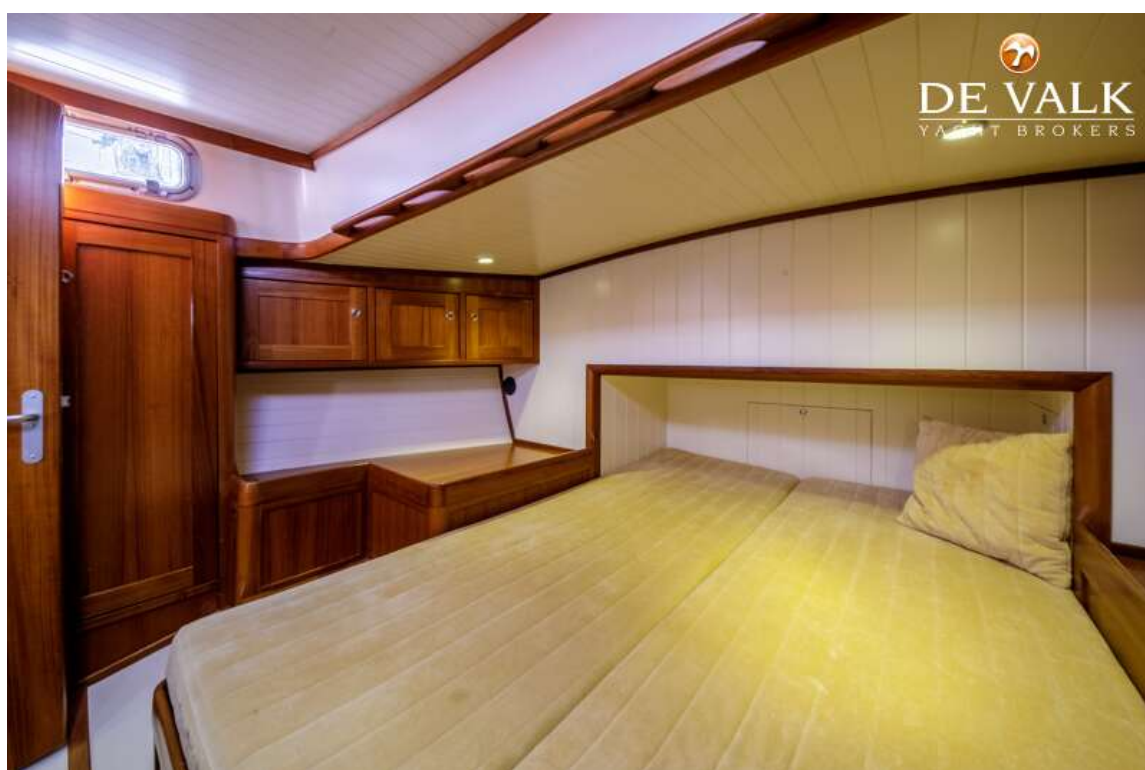


# KOOPMANS 40

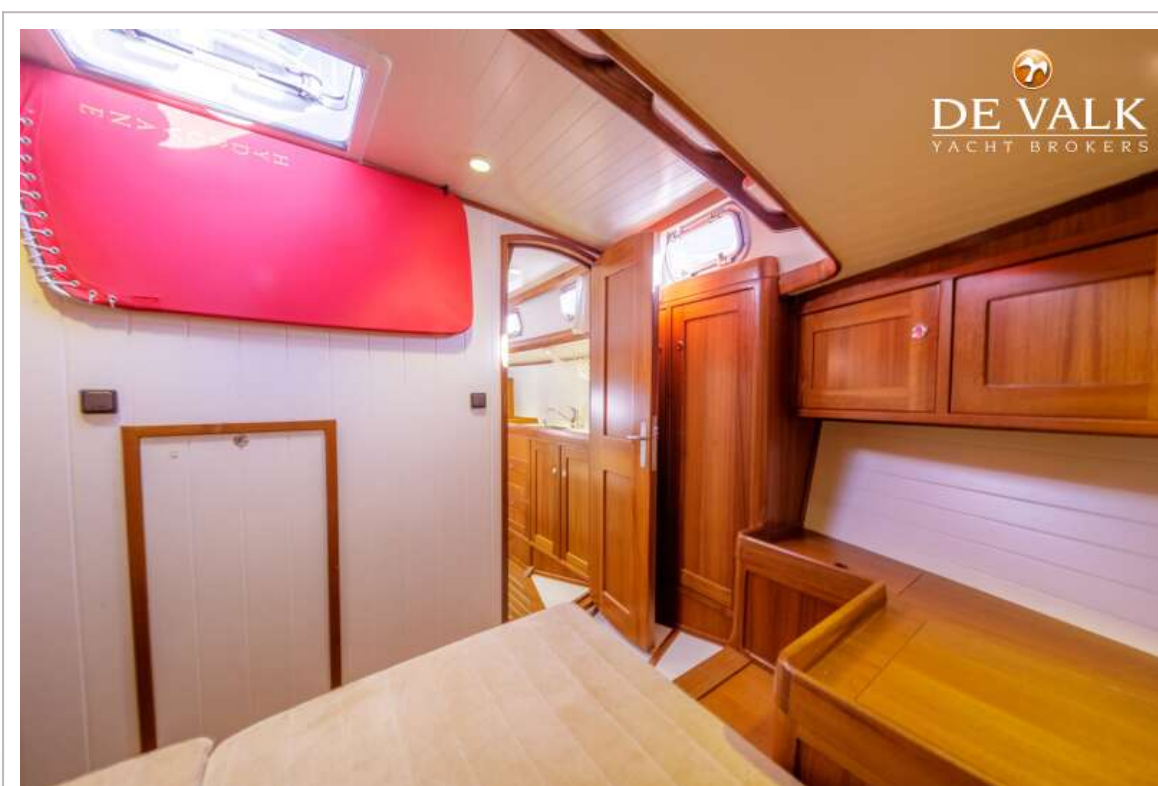




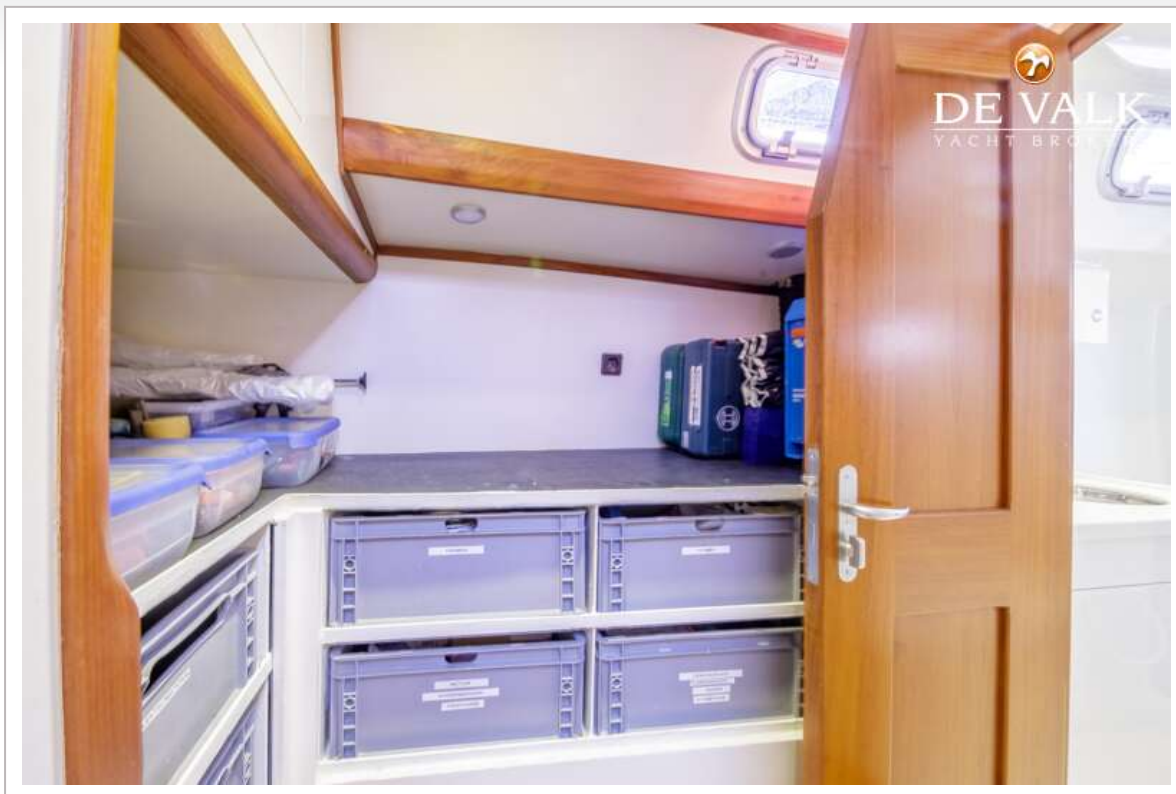
# KOOPMANS 40



# KOOPMANS 40



# KOOPMANS 40









# KOOPMANS 40

