



DE VALK
YACHT BROKERS



DUFOUR 34 PERFORMANCE



DE VALK
YACHT BROKERS

DUFOUR 34 PERFORMANCE

BROKER'S COMMENTS

Shardana is a very well maintained Dufour 34 Performance, a fantastic sailing yacht for holidays, just weekends or racing at te club. Fully equipped with all up to date instruments and new sails. This beauty is ready for her next owner who can start right away and enjoy a hassle free, comfortable sailing adventure. Viewing at Changi Sailing Club, Singapore. Transport to Europe can be organised, feel free to contact us.

Maarten de Kroon

SPECIFICATIONS

Dimensions	10.30 x 3.48 x 1.92 (m)	Builder	Dufour France
Built	2005	Cabins	2
Material	GRP	Berths	6
Engine(s)	1 x Volvo MD 2030 diesel	Hp/Kw	29.00 (hp), 21.34 (kw)
Asking price	sold (VAT)	Lying	Singapore

CONTACT

Sales office	De Valk Asia	Telephone	0601114078055
Address		E-mail	asia@devalk.nl
	AS		

DISCLAIMER

These particulars are given in good faith as supplied but cannot be guaranteed.



DUFOUR 34 PERFORMANCE

GENERAL

Model	DUFOUR 34 PERFORMANCE
Type	sailing yacht
LOA (m)	10,30
LWL (m)	9,16
Beam (m)	3,48
Draft (m)	1,92
Air draft (m)	15,00
Air draft min (m)	14,50
Headroom (m)	1,92
Year built	2005
Builder	Dufour France
Country	France
Designer	Umberto Felci/Patrick Roseo
Displacement (t)	5,48
Ballast (tonnes)	lead
Gross tonnage	5,7
CE norm	A
Hull material	GRP
Hull colour	white
Hull shape	round-bilged
Keel type	bulb keel
Superstructure material	GRP
Deck material	GRP
Deck finish	non-skid moulded in
Cockpit deck finish	teak
Antifouling (year)	VC Offshore, 2022
Window frame	aluminium
Window material	polycarbonate
Portholes	aluminium
Fuel tank (litre)	polyethylene 90



DUFOUR 34 PERFORMANCE

Level indicator (fuel tank)	yes
Freshwater tank (litre)	polyethylene 265
Blackwater tank (litre)	polyethylene 50
Wheel steering	cable steering
Emergency tiller	yes

ACCOMMODATION

Cabins	2
Berths	6
Interior	cherry
Floor	woodprint
Saloon	yes
Navigation center	yes
Chart table	yes
Aft Cabin	yes
Dinette	yes
Dinette to convert into berth	yes
Galley	yes
Countertop	corian White
Sink	stainless steel Double sink
Cooker	calor gas 2 burner
Oven	Calor gas
Fridge	yes
Water pressure system	electrical
Owners cabin	double bed
Bed length (m)	2 x 1.6
Wardrobe	hanging and shelves
Bathroom	separate
Toilet	separate
Toilet system	manual
Wash basin	in the bathroom



DUFOUR 34 PERFORMANCE

Shower	separate
Guest cabin 1	double bed Aft cabin
Bed length (m)	2 x 1.3
Wardrobe	hanging and shelves

MACHINERY

No of engines	1
Make	Volvo
Type	MD 2030
HP	29
kW	21.34
Fuel	diesel
Year installed	2005
Maximum speed (kn)	8
Cruising speed (kn)	6
Consumption (l/hr)	2,4
Range (nm)	220
Engine hours	1062
Engine cooling system	freshwater heat exchanger
Drive	sail-drive
Saildrive seal	SD 130S, seal Aug 2022
Engine controls	bowden cable
Gearbox	mechanical
Exhaust	watercooled
Propeller type	folding Gori
Propeller blades	2
Manual bilge pump	yes
Electric bilge pump	yes
Electrical installation	yes
Batteries	3 x Varta D52
Start battery	1 x 60 Amps AGM (2019)



DUFOUR 34 PERFORMANCE

Service battery	2 x 60 Amps AGM (2018)
Battery charger	Cristec CPS2 / 12V-25A
Shorepower	with cable

NAVIGATION

Compass	Plastimo Olympic 135
Depth sounder	Raymarine ST 60 Tridata
Log	Raymarine ST60 Tridata
Windset	Raymarine ST60
VHF	Raymarine Ray 54E
VHF handheld	Icom
Autopilot	Raymarine with ST6001 control
Rudder angle indicator	yes
Plotter	yes
Plotter/GPS	Raymarine C95 at the helm station
AIS transponder	Oceantalk Class B transponder AIS-700
Navigation lights	yes

EQUIPMENT

Sprayhood	yes
Sun awning	yes
Cockpit table	yes
Boarding ladder	stainless steel
Deck shower	yes
Anchor	Danforth 20 kg
Anchor chain	25 m x 10 mm + 30 m line
Anchor 2	Fortress
Windlass	electrical Quick
Outboard support	yes
Sea railing	stainless steel
Grab rail (superstructure)	teak



DUFOUR 34 PERFORMANCE

Life raft	container
Life raft (pers)	6
Last life raft survey	2012
Lifejackets	8
Safety harness	yes
Lifebuoy	yes
Danbuoy	yes
Safety lines on deck	yes
Horn	Air horn
Binocular	yes
Fenders	yes
Mooring lines	yes
Spare parts	yes
Radio-cd player	VDO
Cockpit speakers	2
Speakers in salon	2
Clock - barometer	yes
Fire extinguisher	2
Extra info	Bosuns Chair

RIGGING

Rigging	fractional
Standing rigging	Dyform
Brand mast	Sparcraft
Material mast	aluminium
Spreaders	2 pair
Mainsail	1 x laminate, 1 x dacron
Mainsail cover	yes
Fully battened mainsail	2
Jib	1
Genoa I	1 x dacron (new), 1 x laminate



DUFOUR 34 PERFORMANCE

Spinnaker	2
A-symmetric spi	1
Reefing System	slabreefing
Backstay adjuster	tackle
Boomvang	gasspring
Primary sheet winch	yes
Genoa sheetwinches	Harken ST 42
Halyard winches	Harken ST 40
Spinnaker winch	Harken ST 44
Winchcovers	6 x blue
Spi-pole	Carbon



DUFOUR 34 PERFORMANCE



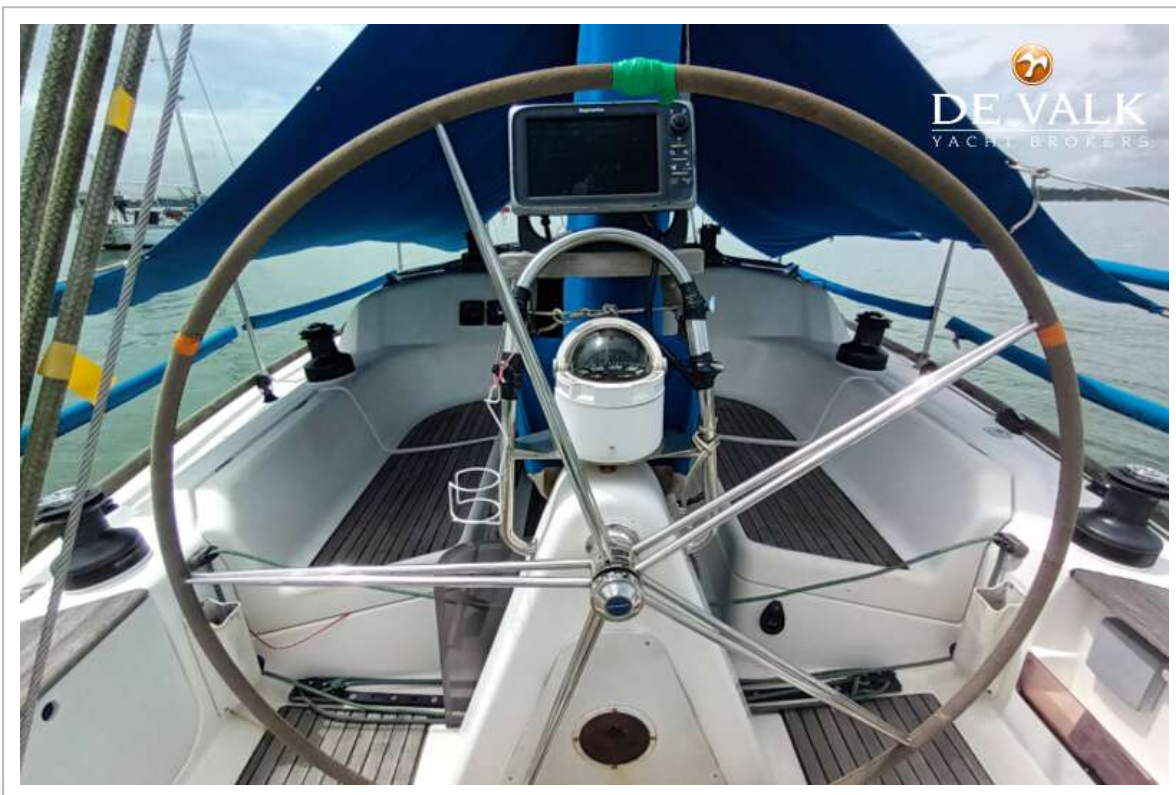
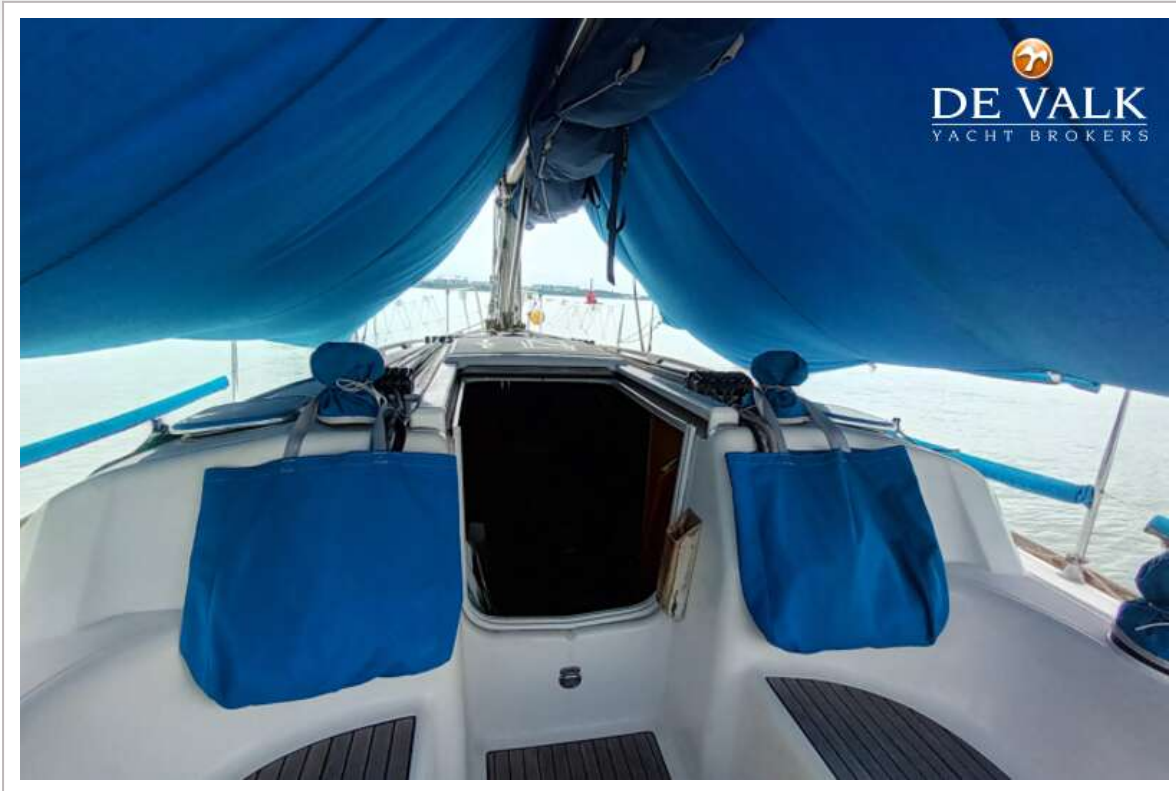
DUFOUR 34 PERFORMANCE



DUFOUR 34 PERFORMANCE



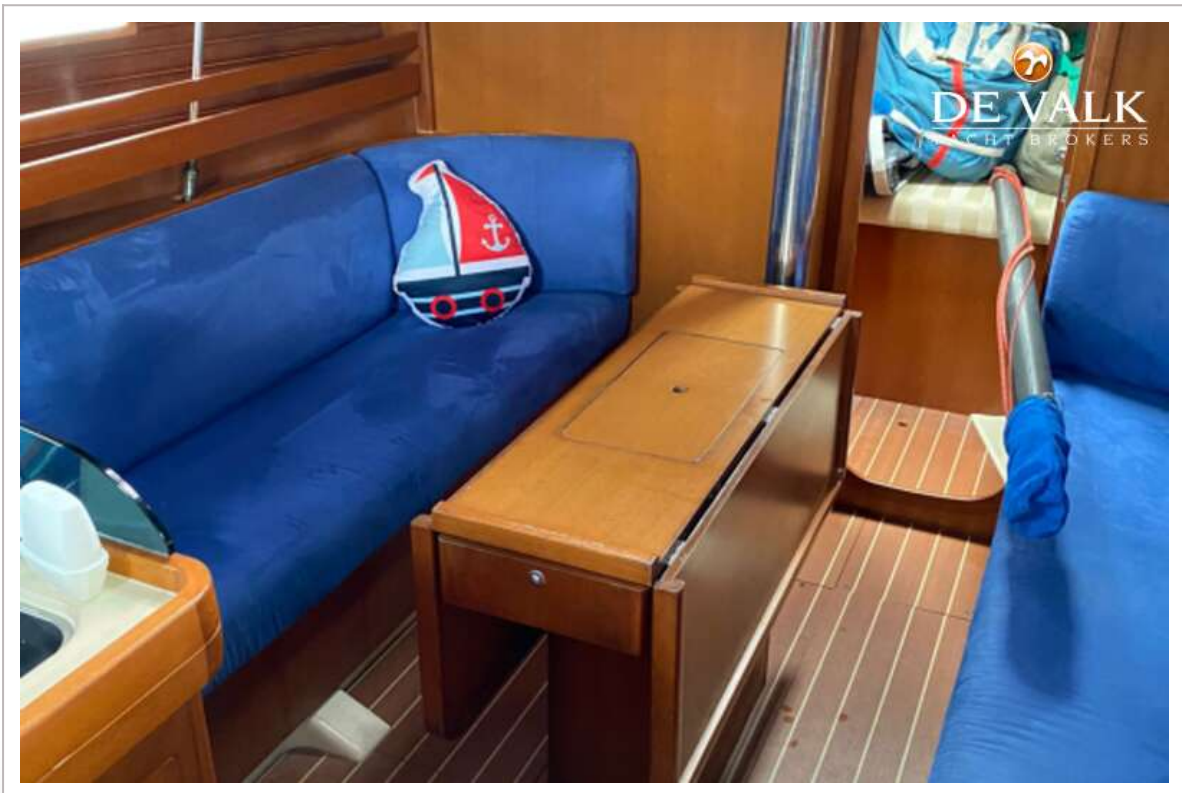
DUFOUR 34 PERFORMANCE



DUFOUR 34 PERFORMANCE



DUFOUR 34 PERFORMANCE



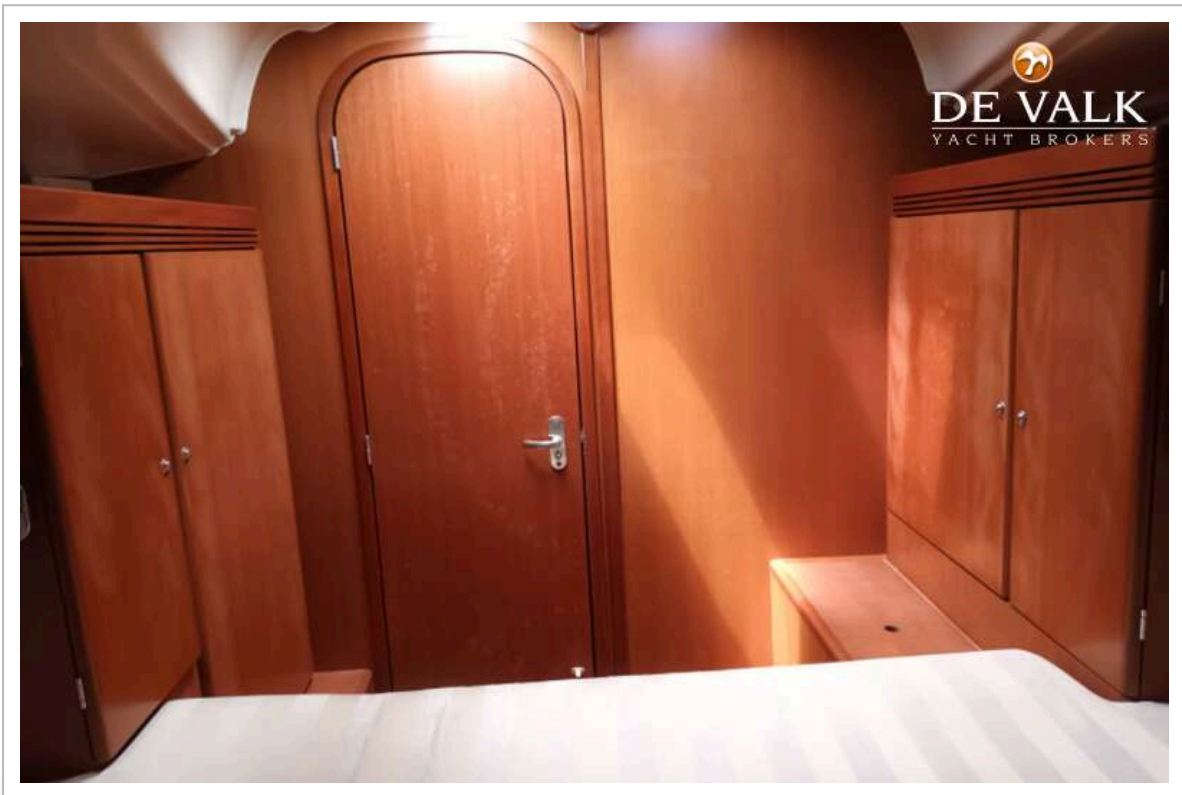
DUFOUR 34 PERFORMANCE



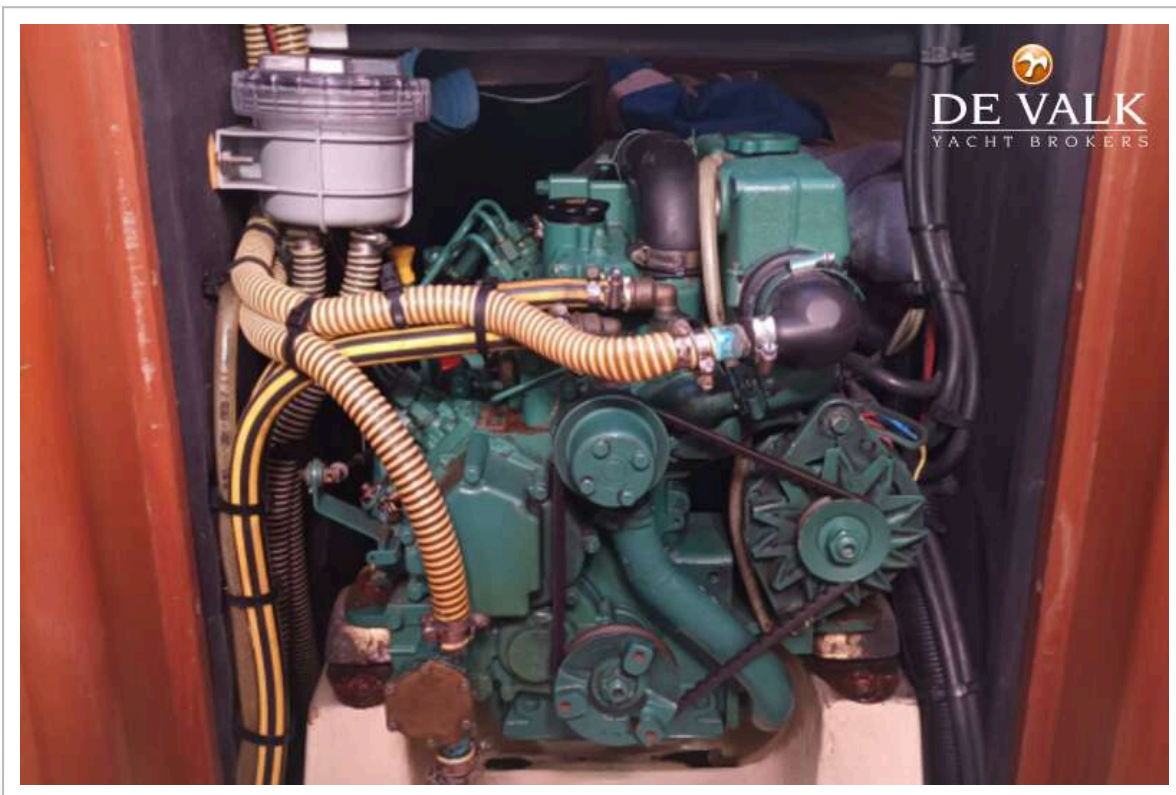
DUFOUR 34 PERFORMANCE



DUFOUR 34 PERFORMANCE



DUFOUR 34 PERFORMANCE



DUFOUR 34 PERFORMANCE

