



MOODY 40



BROKER'S COMMENTS

This Moody 40, a nautical gem from 1980 comes with a well proven and solid seaworthy design. She offers an unparalleled sailing experience and unmatched comfort. The engine was ca 10 years ago replaced for a brand-new Beta Marine. Many further upgrades, extreme neat interior, recent batteries, generator and even a small aircon. This boat exudes a youthful spirit and exceptional reliability. She is in very good overall condition, up to date maintained and reflects meticulous care by the present and former owners. Now ready to go for new adventures.

Lucia Perez Conway

SPECIFICATIONS

Dimensions	11.97 x 4.05 x 2.01 (m)	Builder	Marine Projects (Plymouth) Ltd.
Built	1980	Cabins	3
Material	GRP	Berths	6
Engine(s)	1 x Beta Marine LTD BV 2203 diesel	Hp/Kw	50.00 (hp), 36.80 (kw)
Asking price	sold (VAT)	Lying	contact sales office

CONTACT

Sales office	De Valk Costa Blanca	Telephone	+34 96 50 21 569
Address	Costa Blanca Region 03730 Javea Alicante ES	E-mail	costablanca@devalk.nl

DISCLAIMER

These particulars are given in good faith as supplied but cannot be guaranteed.



GENERAL

Model	MOODY 40
Type	sailing yacht
LOA (m)	11,97
Beam (m)	4,05
Draft (m)	2,01
Headroom (m)	1,90
Year built	1980
Builder	Marine Projects (Plymouth) Ltd.
Country	United Kingdom
Displacement (t)	15,52
CE norm	NA
Hull material	GRP
Hull colour	blue
Hull shape	round-bilged
Superstructure material	GRP
Deck material	GRP
Deck finish	teak
Superstructure deck finish	non-skid moulded in
Cockpit deck finish	teak
Antifouling (year)	2021
Dorades	2
Window frame	aluminium
Window material	perspex
Fuel tank (litre)	stainless steel 155
Freshwater tank (litre)	stainless steel 300, ca.
Level indicator (freshwater)	yes
Greywater tank (litre)	yes
Wheel steering	cable steering

ACCOMMODATION



Cabins	3
Berths	6
Interior	teak
Deck saloon	yes
Headroom saloon (m)	1,90
Air-conditioning	single cycle airco
Chart table	yes
Aft Cabin	yes
Dinette	yes
Dinette to convert into berth	yes
Opening door to cockpit	yes
Galley	yes
Countertop	corian White
Sink	Corian White
Cooker	diesel Wallas 96D
Oven	Wallas 96D
Hot water system	220V + engine
Water pressure system	electrical
Owners cabin	double bed
Bed length (m)	2 x 1,50
Wardrobe	hanging/drawers/shelves
Bathroom	en suite
Toilet	en suite
Toilet system	manual
Wash basin	in the bathroom
Shower	en suite
Guest cabin 1	twin single
Bed length (m)	1,80
Wardrobe	hanging and shelves
Bathroom	shared
Toilet	shared
Toilet system	manual



Wash basin	in the bathroom
Shower	shared
Guest cabin 2	single bed
Bed length (m)	1,90
Wardrobe	drawers and shelves
Bathroom	shared
Toilet	shared
Toilet system	manual
Wash basin	in the bathroom
Shower	shared

MACHINERY

No of engines	1
Make	Beta Marine LTD
Type	BV 2203
HP	50
kW	36.80
Fuel	diesel
Year installed	2013
Maximum speed (kn)	8,5
Cruising speed (kn)	7
Consumption (l/hr)	3
Engine hours	1200
Engine cooling system	freshwater heat exchanger
Drive	shaft
Engine controls	bowden cable
Gearbox	mechanical ZF Hurth Marine
Bowthruster	electric
Propeller shaft material	stainless steel
Shaft lubrication	grease
Manual bilge pump	yes



Electric bilge pump	yes
Electrical installation	12v and 228v
Generator	dry exhaust Whisper Power 2kW
Batteries	6
Start battery	2021
Service battery	x4
Bowthruster battery	yes
Battery charger/inverter	Victron Energy Phoenix Multi 12Volt 2500va 120Amp
Shorepower	with cable

NAVIGATION

Compass	yes
Electric compass	on pilot Raymarine ST 60
Depth sounder	yes
Log	yes
Windset	yes
VHF	Icom Icm4236
VHF handheld	Icom Bc152 x 2
Autopilot	RayMarine ST6000
Rudder angle indicator	on pilot
Radar	yes
Radar/GPS/plotter	RayMarine 70S
Navtex	Icsnov 6
AIS receiver	Nasa Radar
EPIRB	Accusat Gme

EQUIPMENT

Sprayhood	yes
Bimini	yes
Cockpit cushions	yes
Cockpit table	yes



Bathing platform	yes
Boarding ladder	yes
Gangway	yes
Deck shower	yes
Anchor	Fortress
Anchor chain	60m
Sea railing	wire
Life raft	container Needs service
Life raft (pers)	6
Radar reflector	yes
Fenders	yes
Mooring lines	yes
Spare parts	yes
Radio-cd player	yes
Speakers in salon	yes
Speakers in cabin	yes
Latest extinguisher survey	Needs service
Extinguisher in engine room	yes

RIGGING

Rigging	sloop
Standing rigging	wire
Brand mast	Seldén
Material mast	aluminium
Mainsail	60%
Mainsail cover	lazy bag
Genoa	60%
Genoa furler	yes
Genoa sheetwinches	Lewmar 48 ST x 2
Spinnaker winch	Lewmar 30 ST x 2
Multifunctional winches	Lewmar 40 ST 2 x16





MOODY 40



MOODY 40



MOODY 40



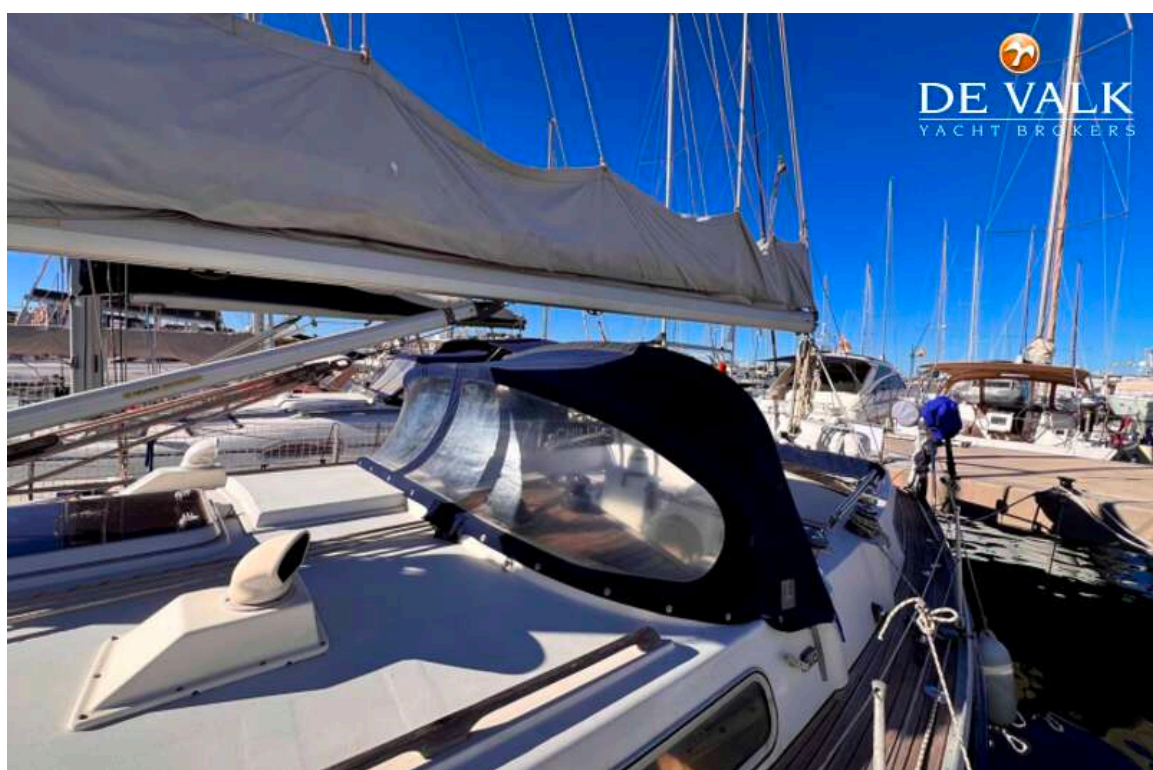
MOODY 40



MOODY 40



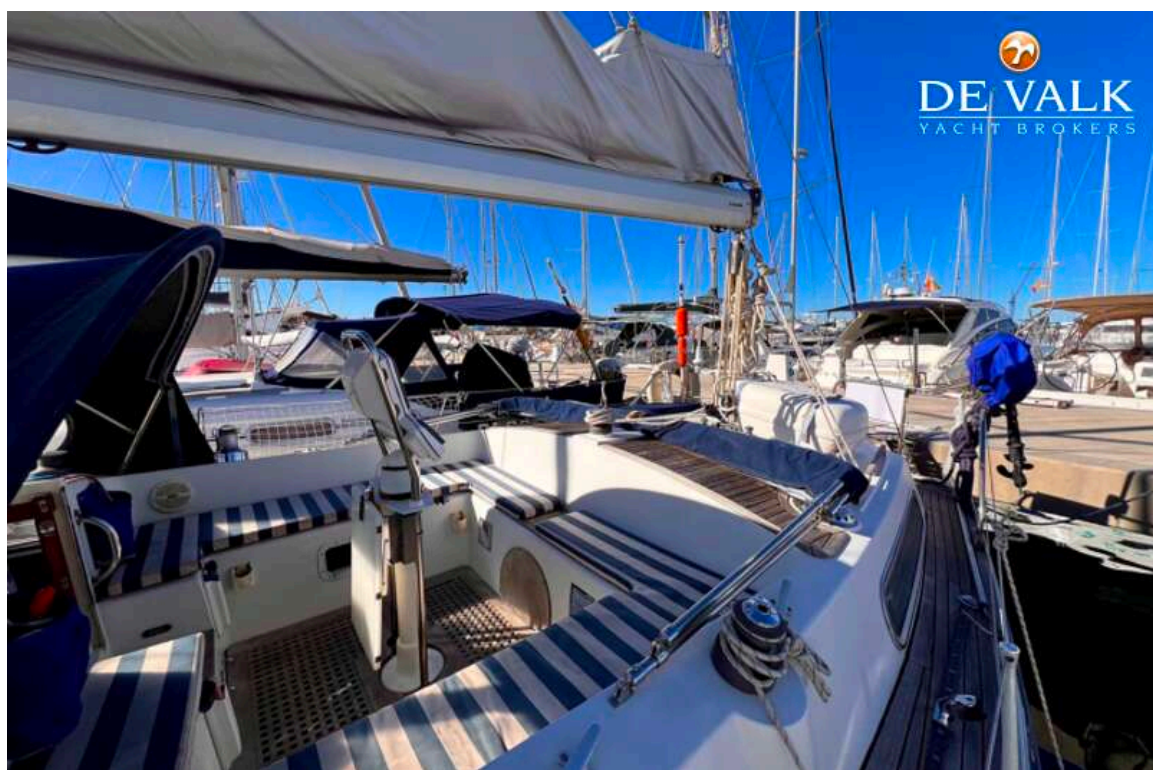
MOODY 40



MOODY 40



MOODY 40



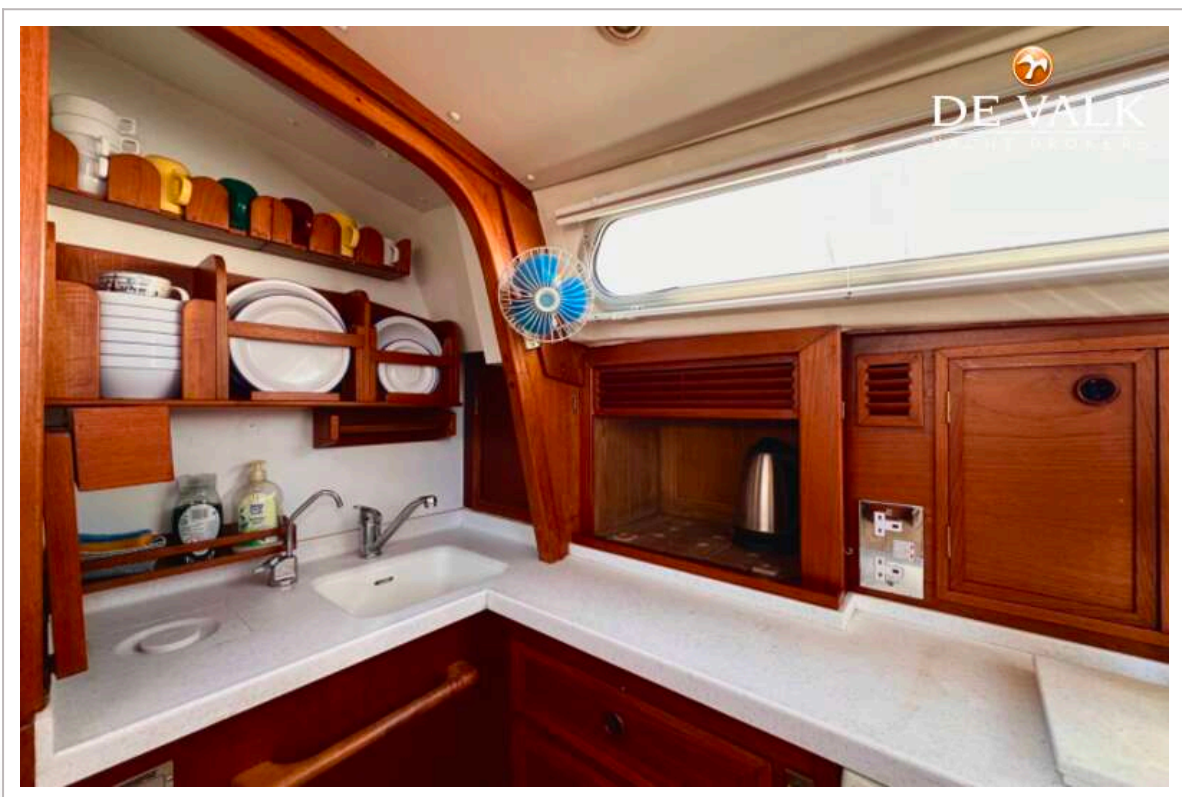
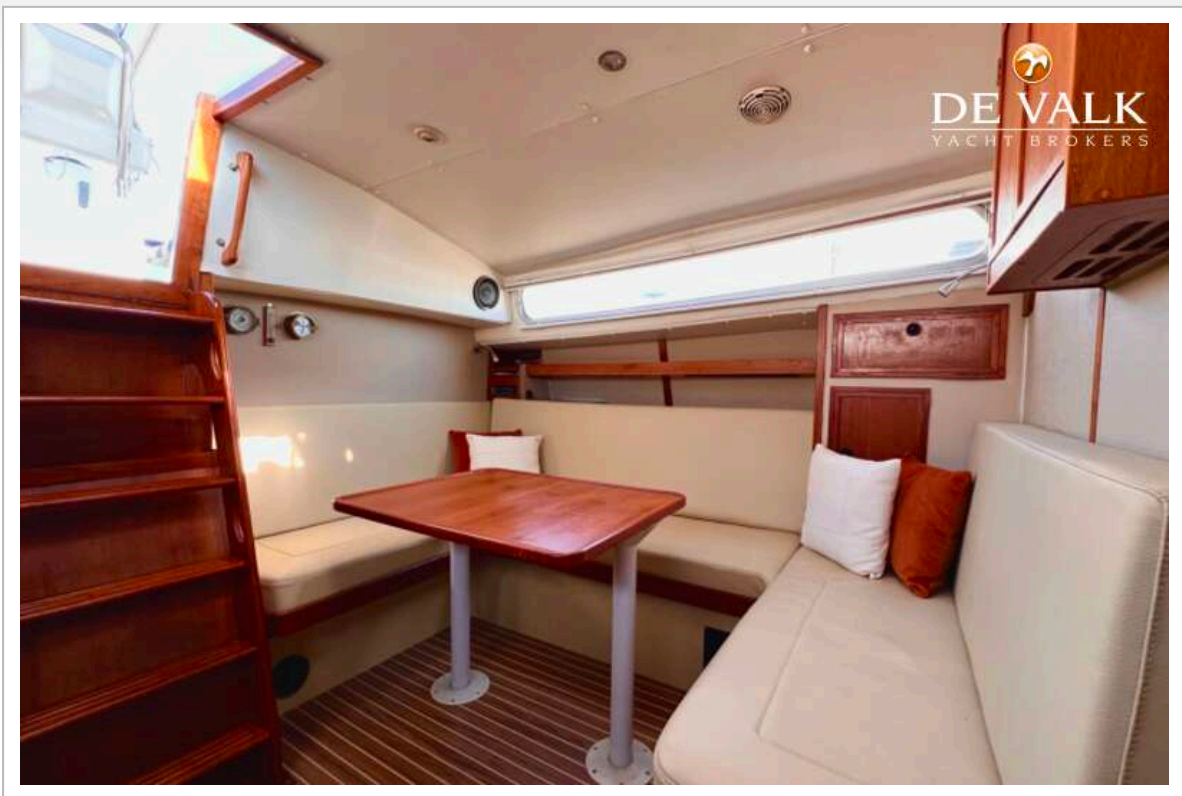
MOODY 40



MOODY 40



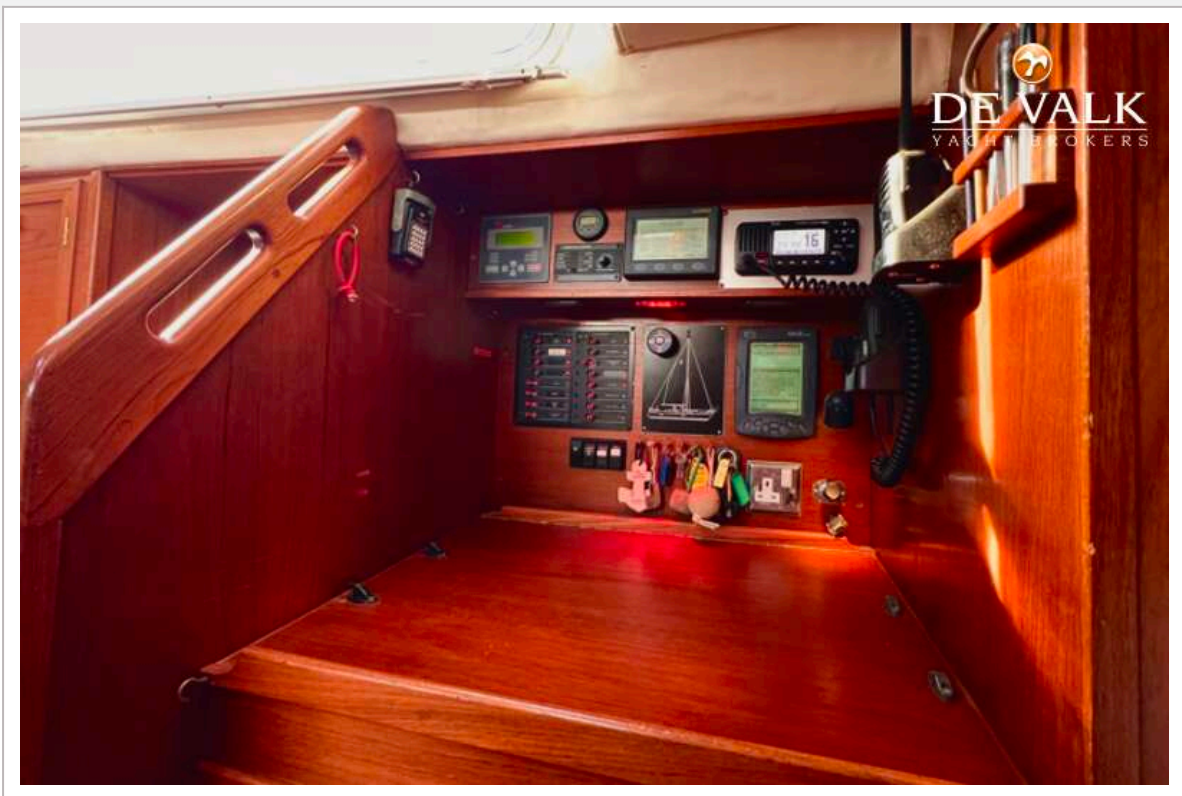
MOODY 40



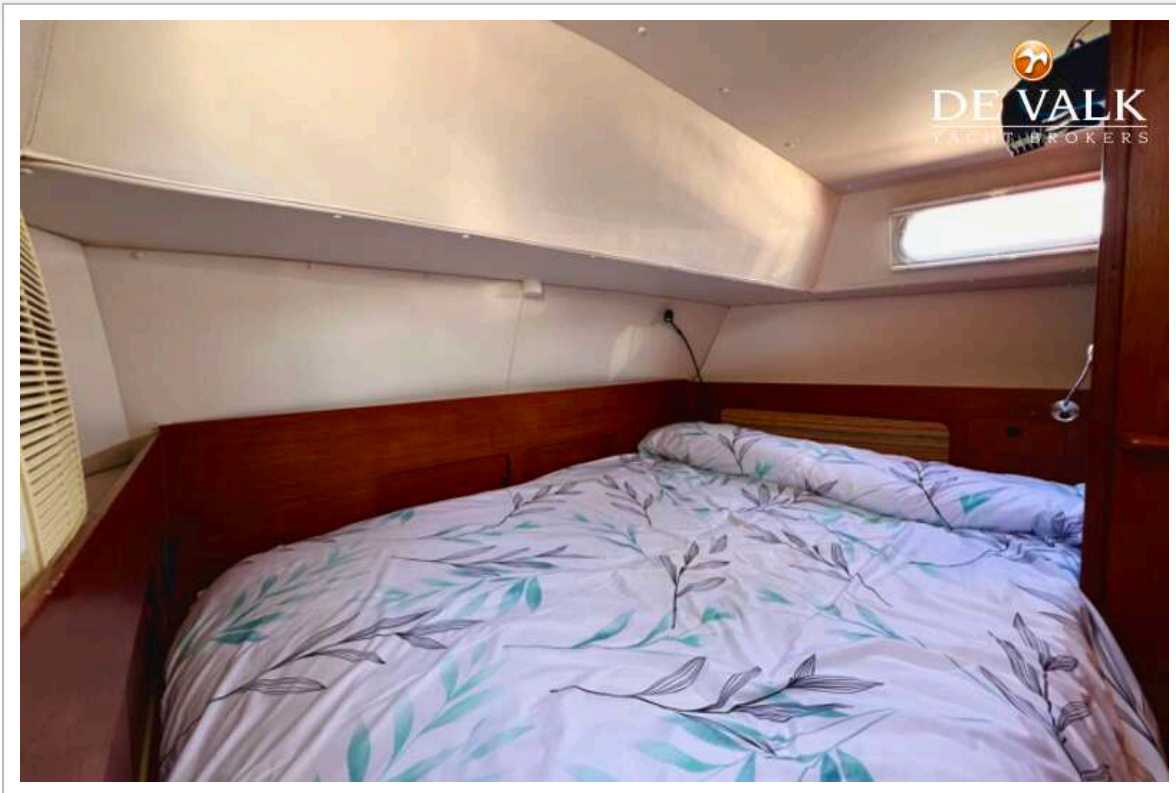
MOODY 40



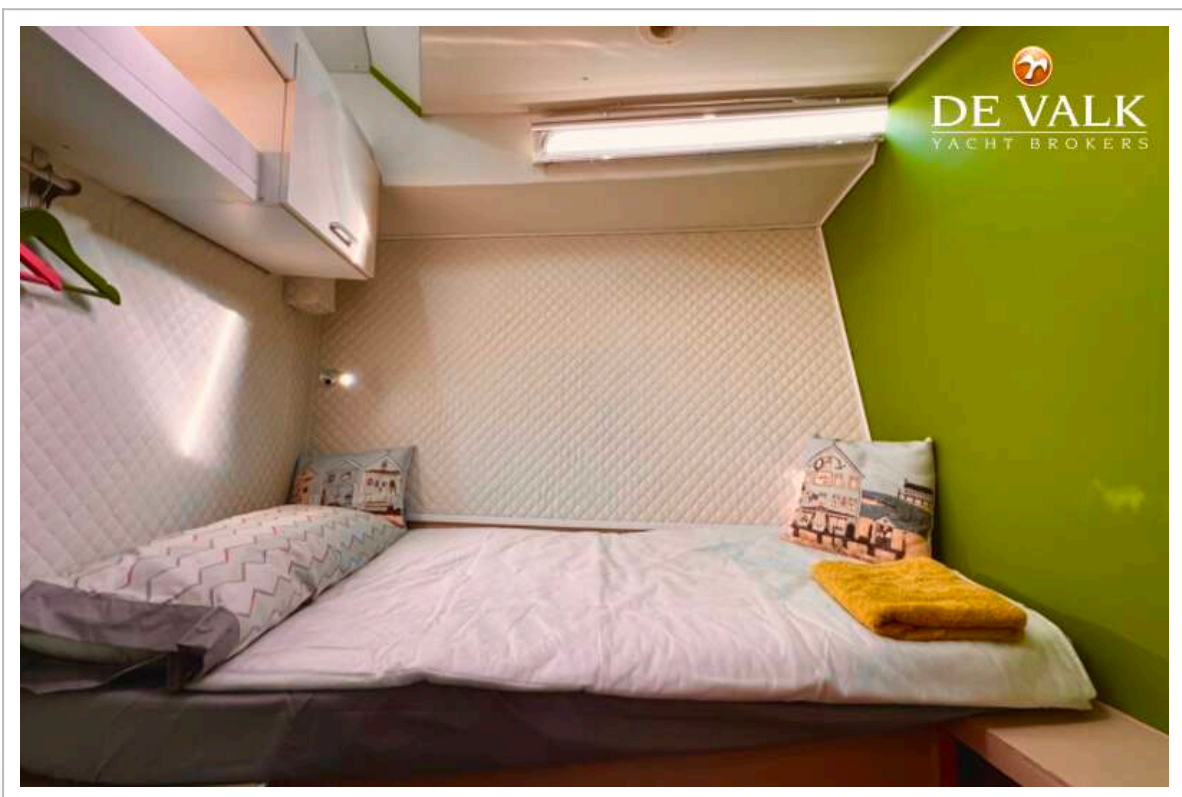
MOODY 40



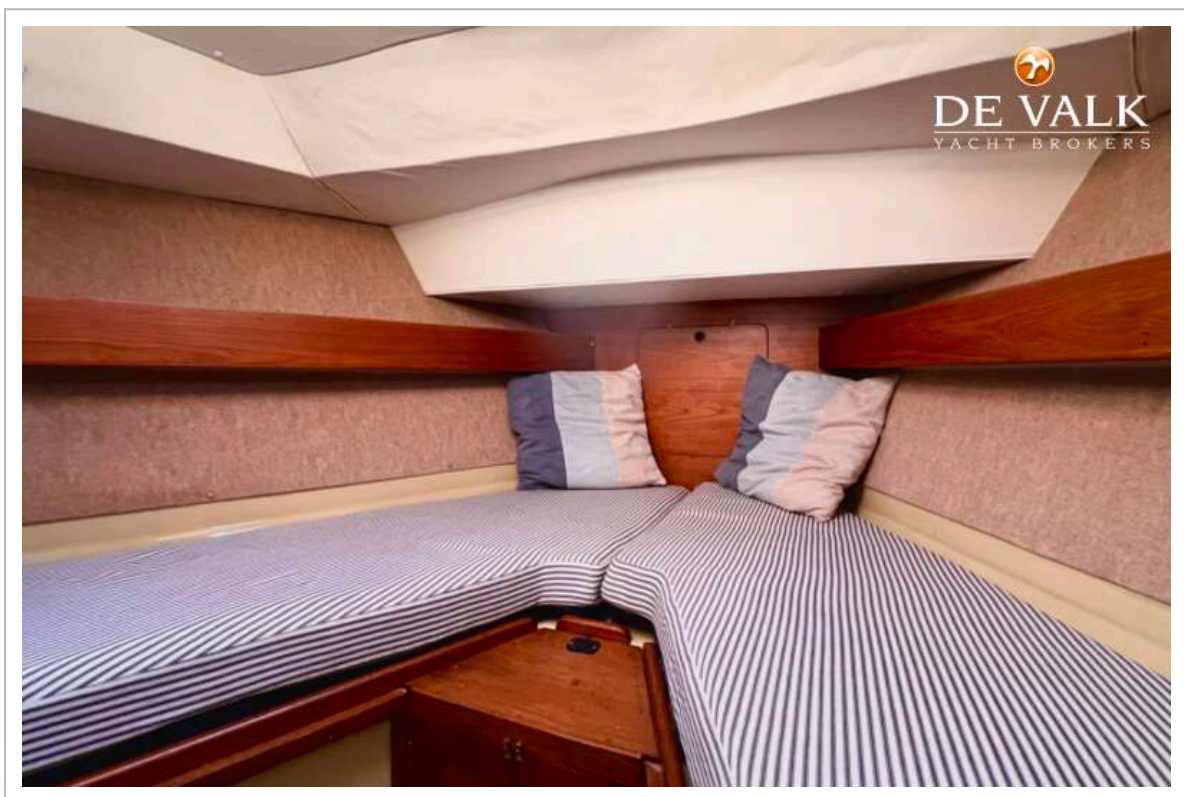
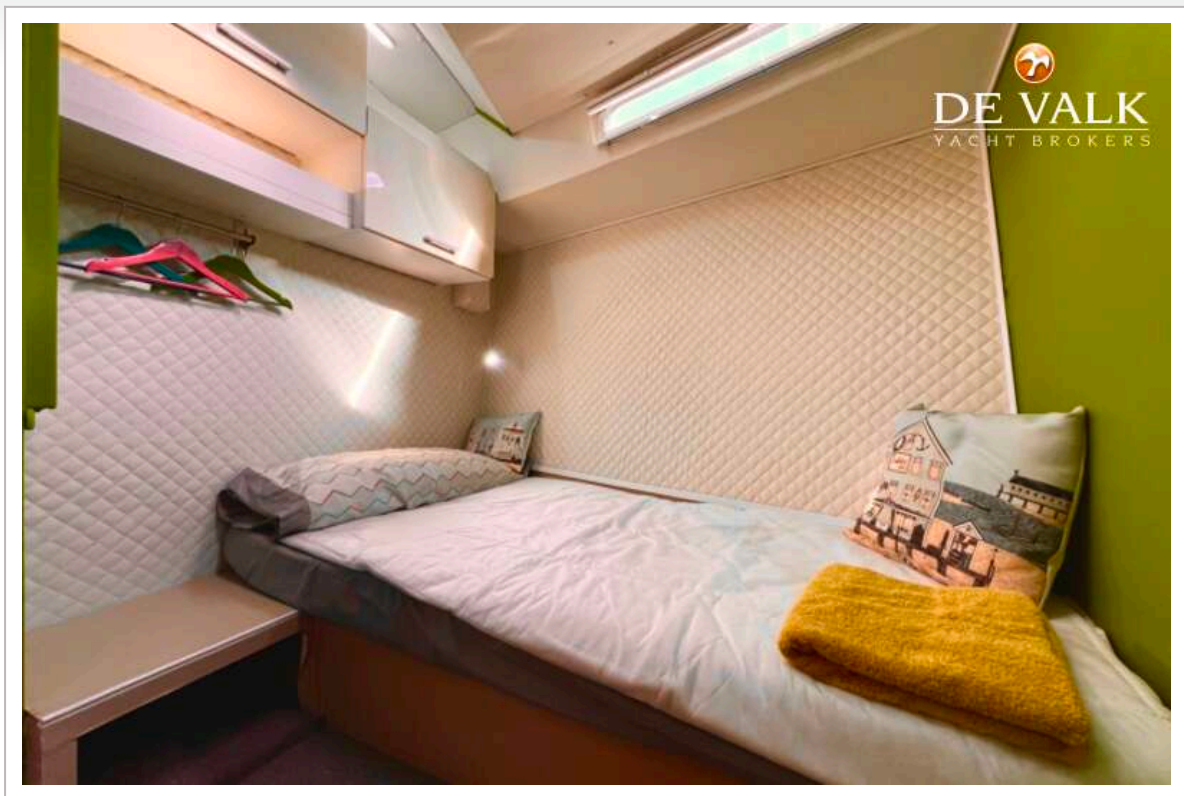
MOODY 40



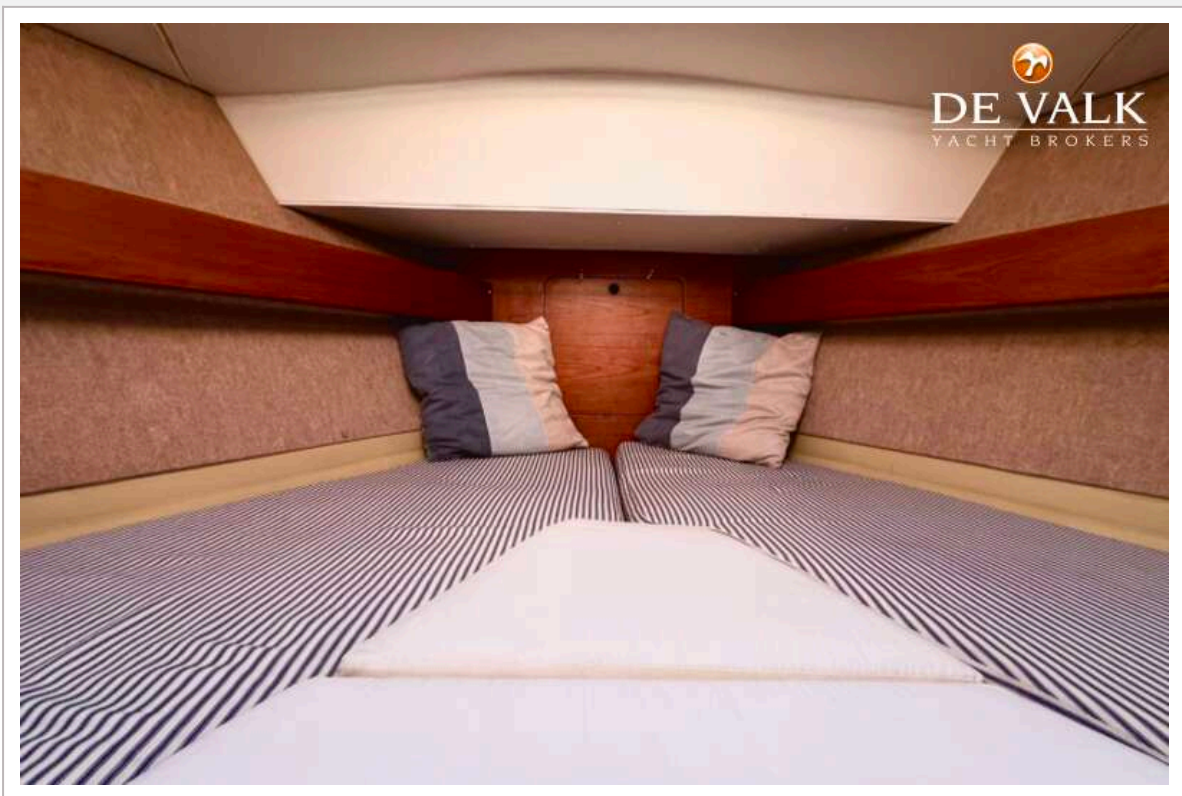
MOODY 40



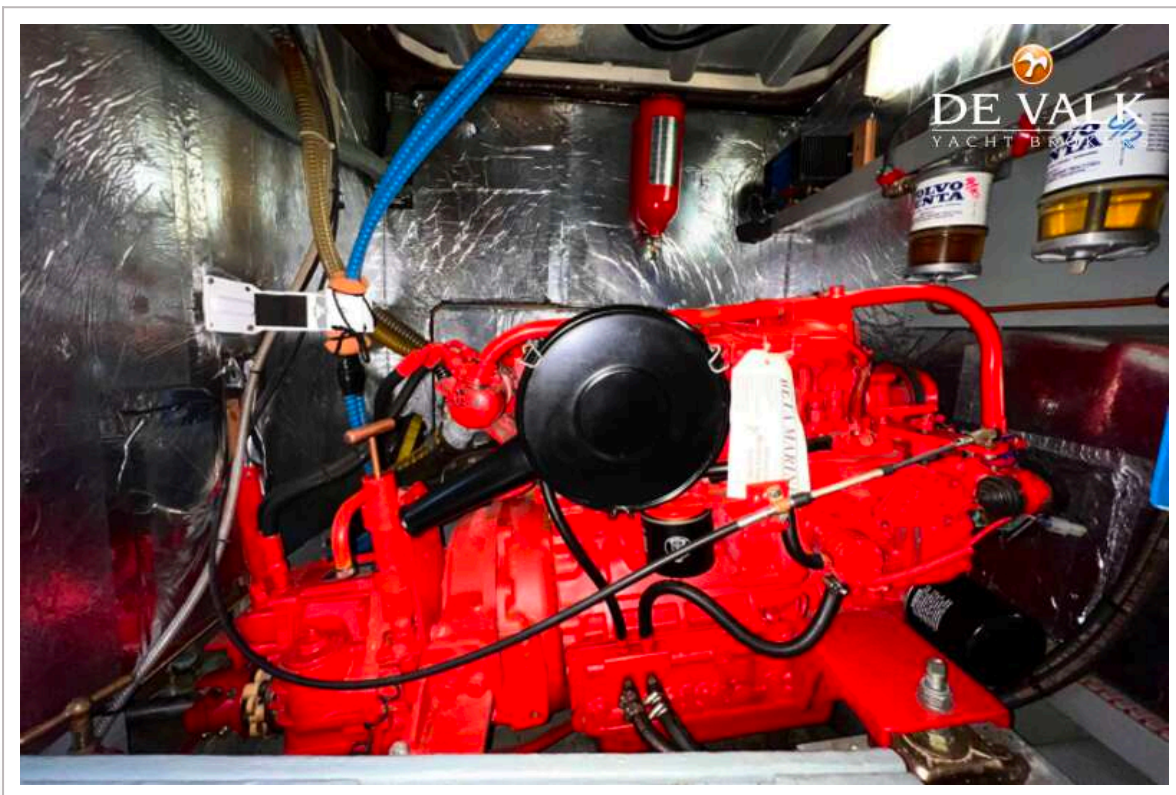
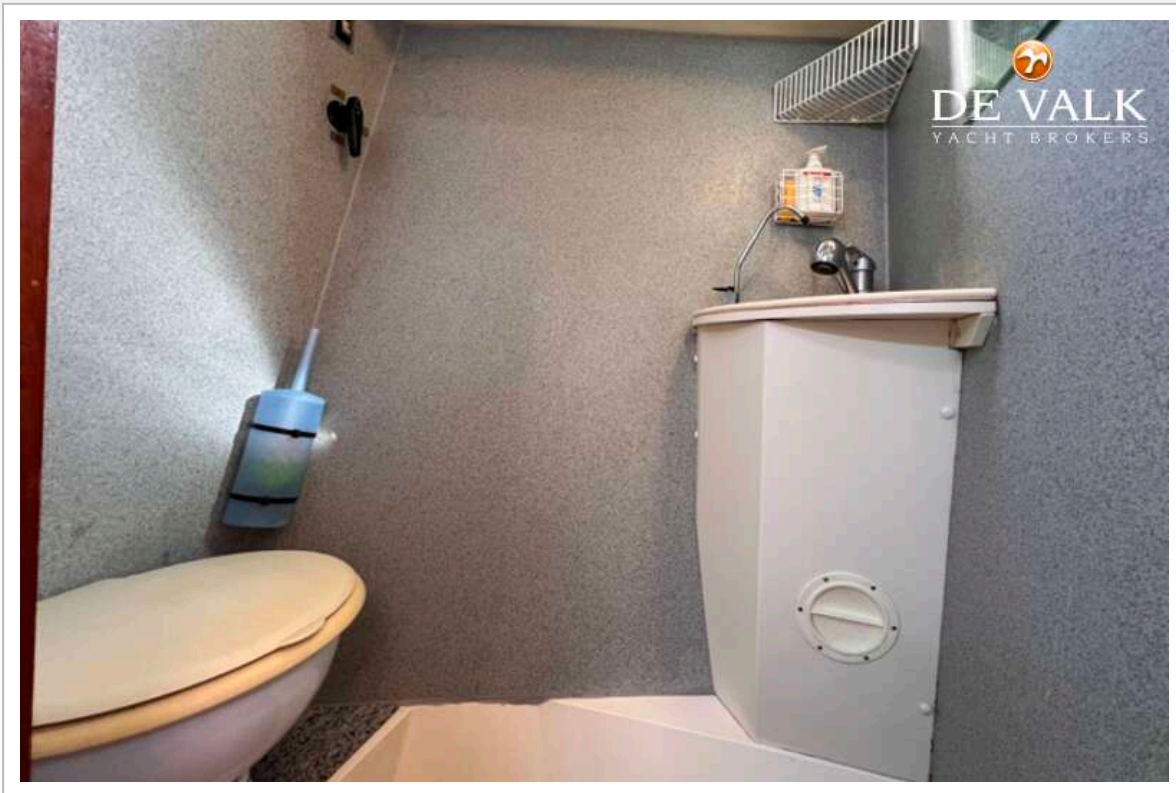
MOODY 40



MOODY 40



MOODY 40



MOODY 40

