



DE VALK
YACHT BROKERS



MOTORSAILER 23M



DE VALK
YACHT BROKERS

MOTORSAILER 23M

BROKER'S COMMENTS

This stunningly seaworthy, custom-built steel Motorsailer was built in the famous Solana Shipyard by Laurent Giles, with the approval of Lloyd's. The hull is inspired by the Atlantic Ocean-going fishing vessels that endure the most challenging weather conditions. The deck layout is well-designed and organized. The lifted, large aft deck sitting area leads to the spacious pilot house. The beautiful main salon leads to the large master cabin and guest cabin midship and 2 guest cabins aft, separated by a dining area and galley. Very well maintained; no expense has been spared over the years.

Tue Simon Fasting

SPECIFICATIONS

Dimensions	23.00 x 5.71 x 3.10 (m)	Builder	Astilleros Solana
Built	2001	Cabins	4
Material	Steel	Berths	10
Engine(s)	2 x MAN D2866 diesel	Hp/Kw	2 x 395.00 (hp), 290.72 (kw)
Asking price	Under Offer (VAT)	Lying	Italy

CONTACT

Sales office	De Valk Barcelona	Telephone	+34 932 202 825
Address	Barcelona region 08392 Barcelona ES	E-mail	barcelona@devalk.nl

DISCLAIMER

These particulars are given in good faith as supplied but cannot be guaranteed.



MOTORSAILER 23M

GENERAL

Model	MOTORSAILER 23M
Type	motorsailer
LOA (m)	23,00
LWL (m)	21,24
Beam (m)	5,71
Draft (m)	3,10
Year built	2001
Launched	2002
Builder	Astilleros Solana
Country	Spain
Designer	Laurent Giles Naval Architects
Displacement (t)	69,65
Gross tonnage	103
CE norm	NA
Hull material	steel
Hull colour	blue
Hull thickness (mm)	7 mm
Hull shape	Long keel displacement hull
Keel type	Run keel
Superstructure material	aluminium
Superstructure (mm)	4-5 mm
Deck plate thickness (mm)	3 mm
Deck material	steel
Deck finish	teak 14 mm less than 5 years
Cockpit deck finish	teak
Antifouling (year)	2025
Window frame	stainless steel
Window material	tempered glass
Portholes	stainless steel
Flybridge	yes



MOTORSAILER 23M

Flybridge suncover	yes
Fuel tank (litre)	steel Fwd 2 X 3740L = 7480L
Fuel tank 2 (litre)	steel Aft 2 X 2800L = 5600L
Level indicator (fuel tank)	yes
Fuel daytank (litre)	steel 530L
Level indicator (daytank)	yes
Freshwater tank (litre)	steel 920L
Level indicator (freshwater)	yes
Blackwater tank (litre)	yes
Level indicator (blackwater)	yes
Blackwater tank extraction	deck extraction + pump
Greywater tank (litre)	yes
Level indicator (greywater)	yes
Wheel steering	hydraulic Overhaul 2023
Inside helm position	yes
Flybridge helm position	yes
Emergency tiller	yes
More info on hull	Sunmatic cathodic hull protection system
More info on paintwork	Newly painted hull and superstructure in 2022
Extra info	Aquadrive anti-vibration system on shafting lines
Extra info	Constructed according to Lloyds class

ACCOMMODATION

Cabins	4
Berths	10
Crew berths	3
Interior	cherry
Floor	Teak and carpet
Headroom saloon (m)	2,05
Heating	diesel ducted hot air
Air-conditioning	reverse cycle airco Air Marine 5 units - 4 pumps



MOTORSAILER 23M

Navigation center	yes
Chart table	yes
Galley	Between salon and forward guest section
Sink	stainless steel
Cooker	induction Bosch
Oven	Miele - extra large
Extractor	yes
Microwave	Bosch
Fridge	Bosch
Freezer	Bosch
Hot water system	yes
Water pressure system	electrical
Dishwasher	yes
Ice maker	yes
Coffee maker	yes
Crockery	yes
Owners cabin	double bed
Bed length (m)	2,1 X 1,8 - can be enlarged
Wardrobe	hanging/drawers/shelves
Bathroom	en suite Large bathtub
Toilet	Blake toilet and pump (euro 9,000)
Toilet system	yes
Shower	yes
Bath tub	yes
Guest cabin 1	double bed
Bed length (m)	2,0 X 1,6
Bathroom	en suite
Toilet	Blake toilet and pump (euro 9,000)
Shower	yes
Guest cabin 2	twin single With extra folding bunk bed
Bed length (m)	2
Bathroom	en suite



MOTORSAILER 23M

Toilet	Blake toilet and pump (euro 9,000)
Shower	yes
Guest cabin 3	twin single With extra folding bunk bed
Bed length (m)	2
Bathroom	En suite
Toilet	Blake toilet and pump (euro 9,000)
Shower	yes
Crew cabin(s)	2
Toilet (crew)	1
Shower (crew)	1
Washing machine	yes

MACHINERY

No of engines	2
Make	MAN
Type	D2866
HP	395
kW	290.72
Fuel	diesel
Year installed	2001
Maximum speed (kn)	12
Cruising speed (kn)	9
Consumption (l/hr)	50
Range (nm)	2450
Engine hours	7000
Engine cooling system	freshwater heat exchanger
Bowthruster	hydraulic Lewmar 40HP
Exhaust	watercooled 2 new MAN main engine exhausts installed 2025
Propeller type	fixed
Propeller blades	4
Electric bilge pump	yes



MOTORSAILER 23M

Bilge alarm	yes
Generator	silent separator Kohler 18KW
Generator 2	silent separator Kohler 18KW
Batteries	50 Varta no maintenance gel batteries 24V for deck and service
Start battery	6
Battery charger	3 Mastervolt
Shorepower	with cable
Watermaker	Sea Recovery Reverse Osmosis Desalination System 130l/h

NAVIGATION

Compass	yes
Electric compass	yes
Depth sounder	yes
Repeater	Wheel house to fly bridge
Fish finder	Furuno 2022
VHF	Sailor 6222
VHF handheld	New Icom
Autopilot	Double Robertson autopilot for two steering on bridge and fly
Rudder angle indicator	yes
Radar	Furuno
GPS	2 X Furuno GP-39 2022
Plotter	2 X Garmin
AIS receiver	2
AIS transponder	2
AIS transceiver	2
Navigation lights	yes
Searchlight	yes
Extra info	SSB Furuno FS 1562-Z5
Extra info	VSAT

EQUIPMENT



MOTORSAILER 23M

Fixed windscreen	yes
Bimini	New
Anchor	2 Custom made anchors (Boston,USA) type Pool
Anchor chain	2 x 110 meters
Windlass	hydraulic Ideal Windlass USA 300kg pull
Dinghy	rigid hull Boston wheeler with outboard Mercury 40HP
Deck crane	Besenzoni 500kg load
Life raft	2 X 7 pax Viking
Lifejackets	yes
Safety harness	yes
Lifebuoy	yes
Window ventilator	yes
Window heating	yes
Horn	yes
Binocular	yes
Radar reflector	yes
Fenders	yes
Mooring lines	yes
Tools	yes
Alarm system	Detectors in all sections
TV	Samsung
TV receiver	yes
TracVision ball	yes
Speakers in salon	Bosé
Speakers in cabin	Bosé
Fire extinguisher	In all sections
Latest extinguisher survey	2023
Auto extinguisher system	Co2

RIGGING

Rigging	ketch More than 10 years old. Good conditions.
----------------	--



MOTORSAILER 23M

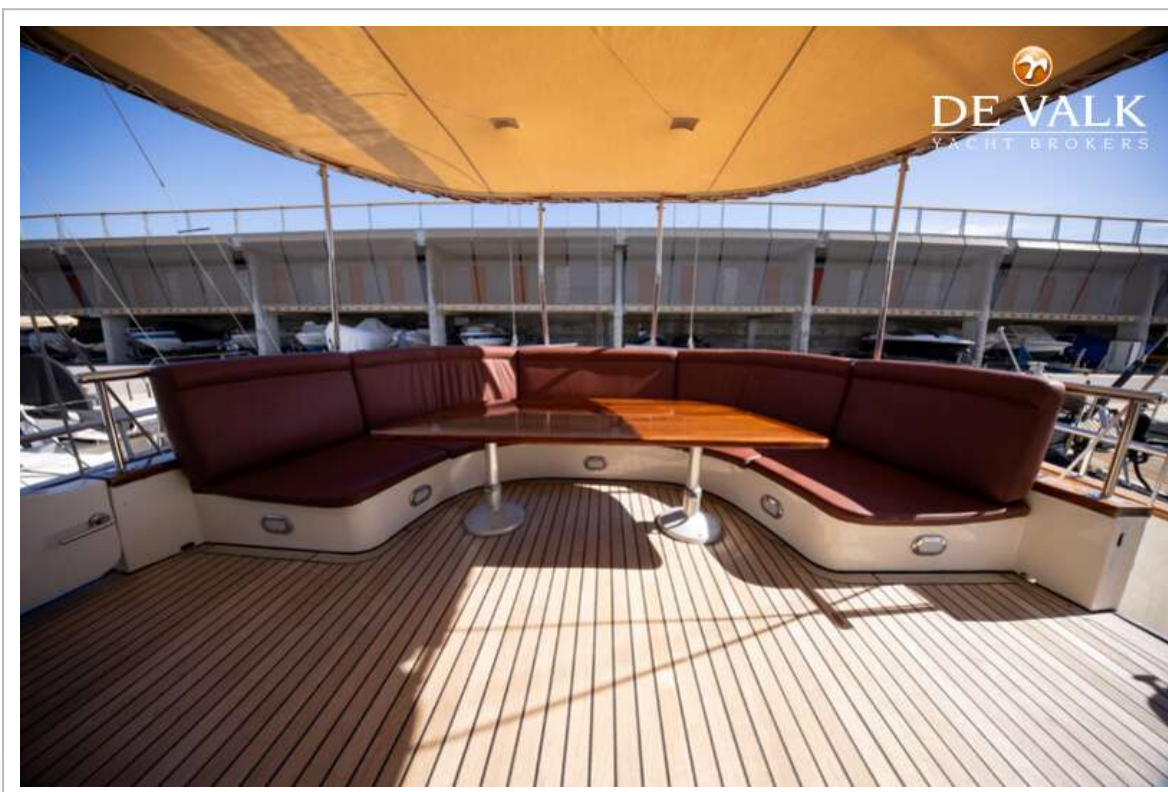
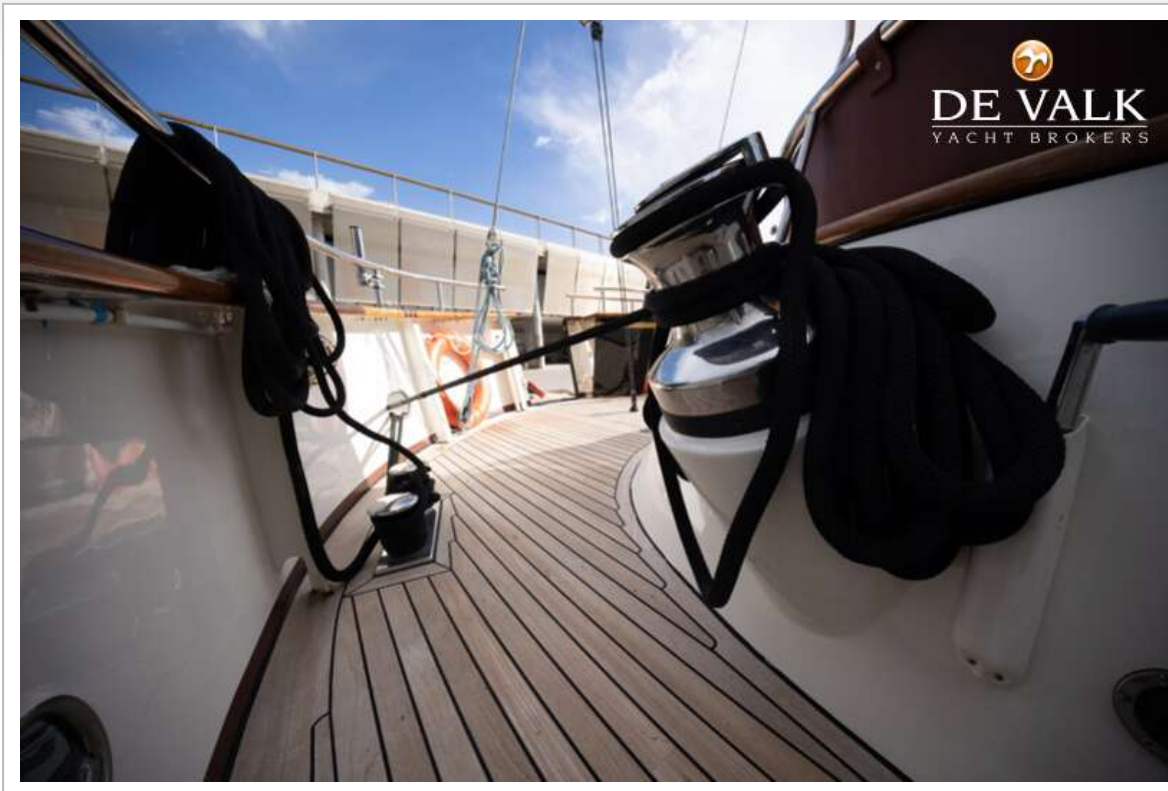
Standing rigging	Rod Very well maintained and approved by the insurance
Material mast	aluminium Both masts with new paint 2022
Spreaders	yes
Mainsail	66.3 m2 Depoorter new 2024 Reckman hydraulic furling
Mizzen	28,9 m2 Depoorter new 2024
Mizzen staysail	59,2 m2 Depoorter new 2024
Genoa	115 m2 Depoorter new 2024
Stormjib	25,15 m2 Depoorter new 2024
Multifunctional winches	6 Andersen hydraulic



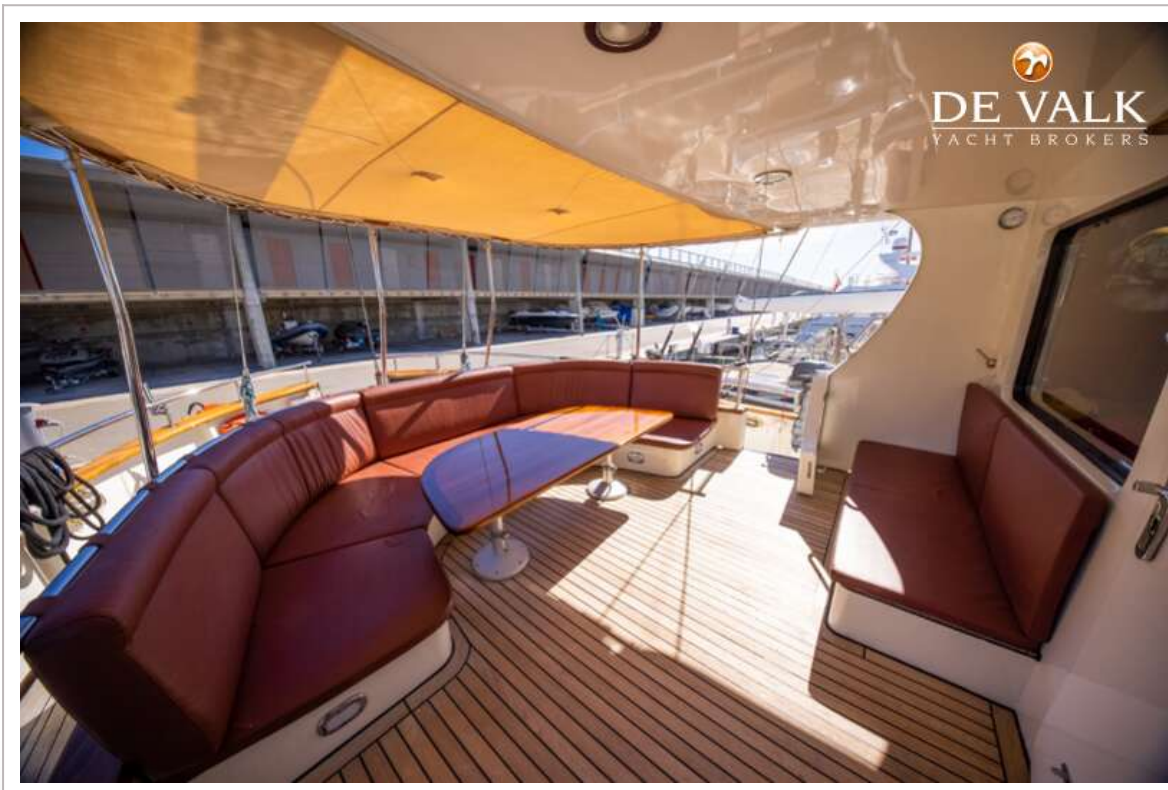
MOTORSAILER 23M



MOTORSAILER 23M



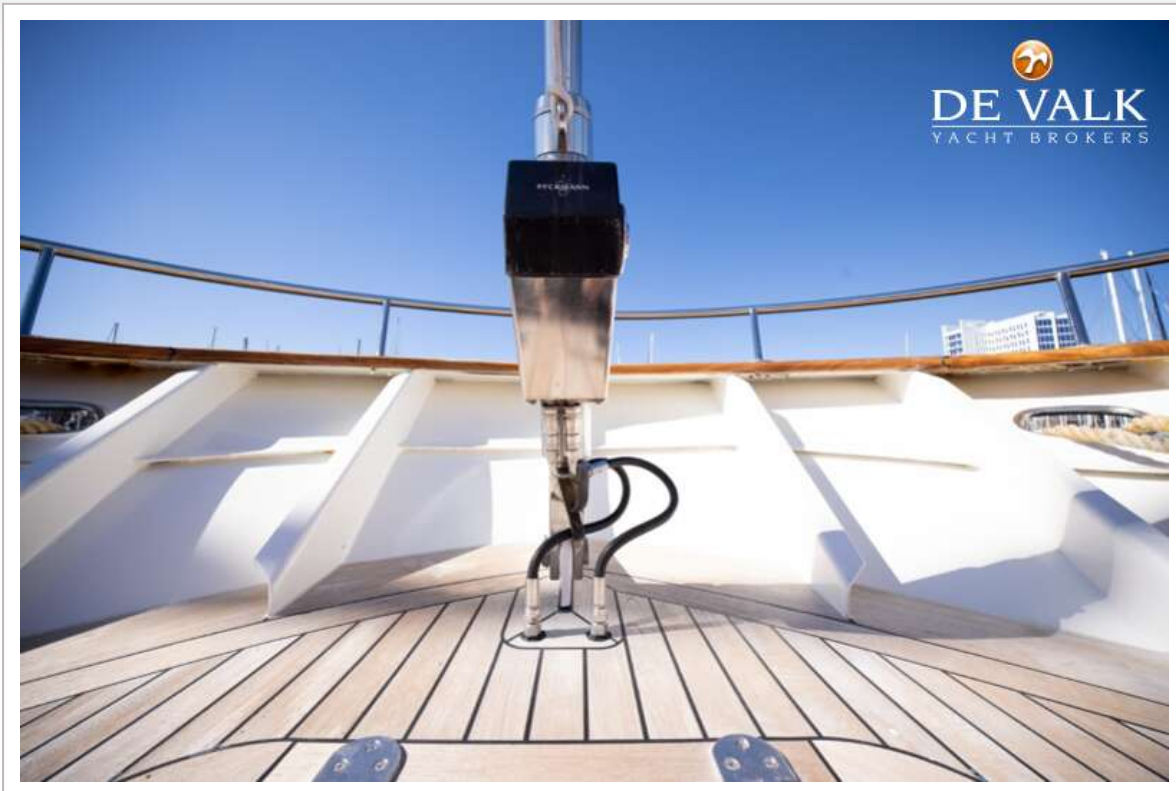
MOTORSAILER 23M



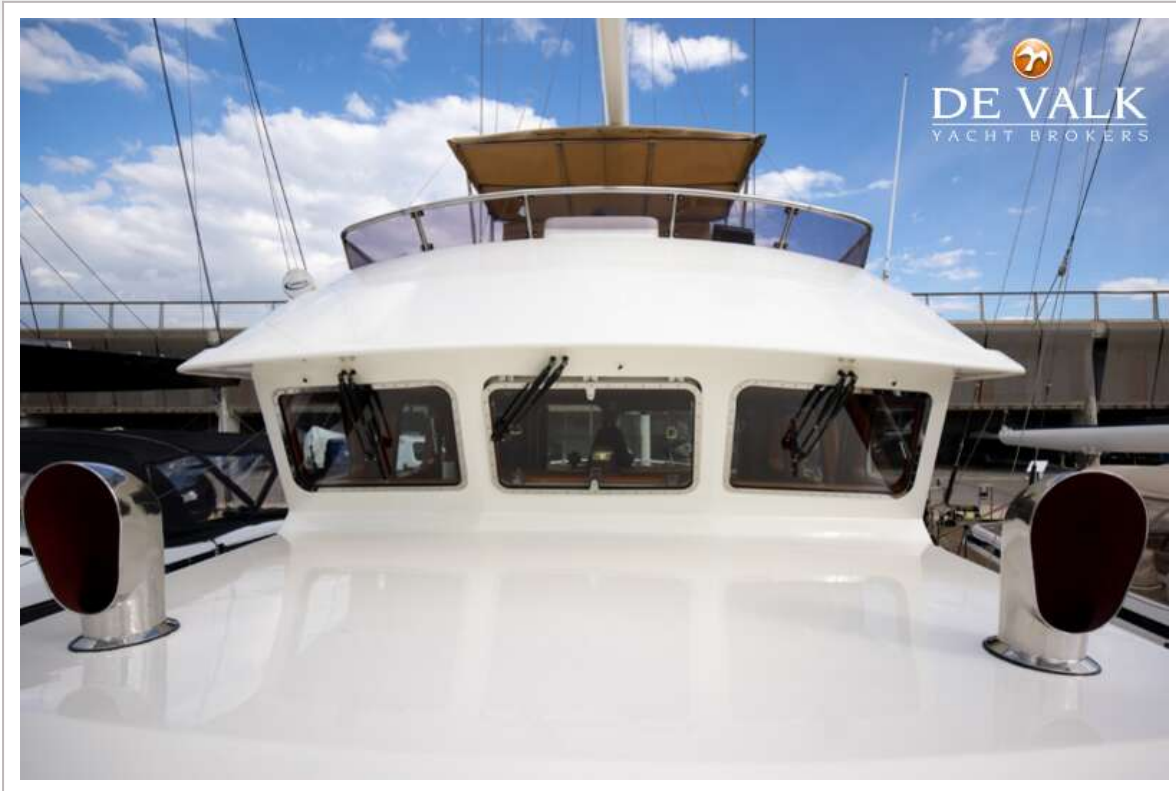
MOTORSAILER 23M



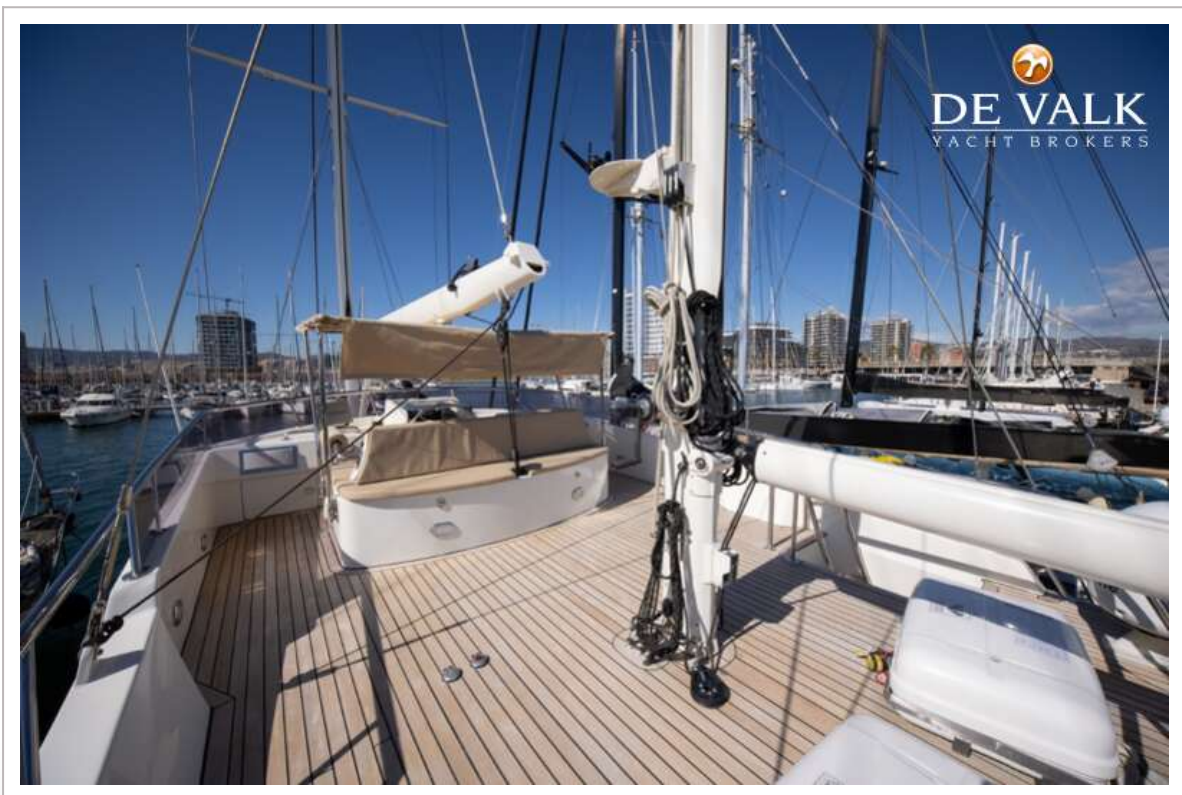
MOTORSAILER 23M



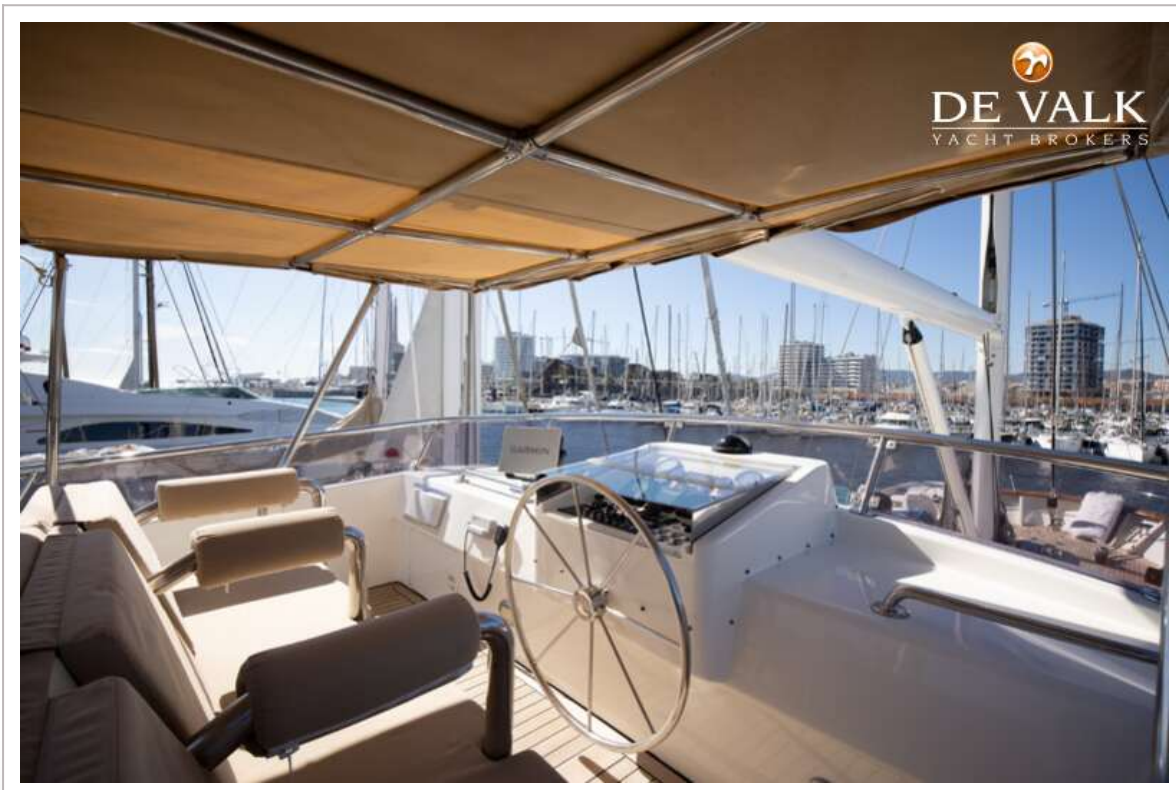
MOTORSAILER 23M



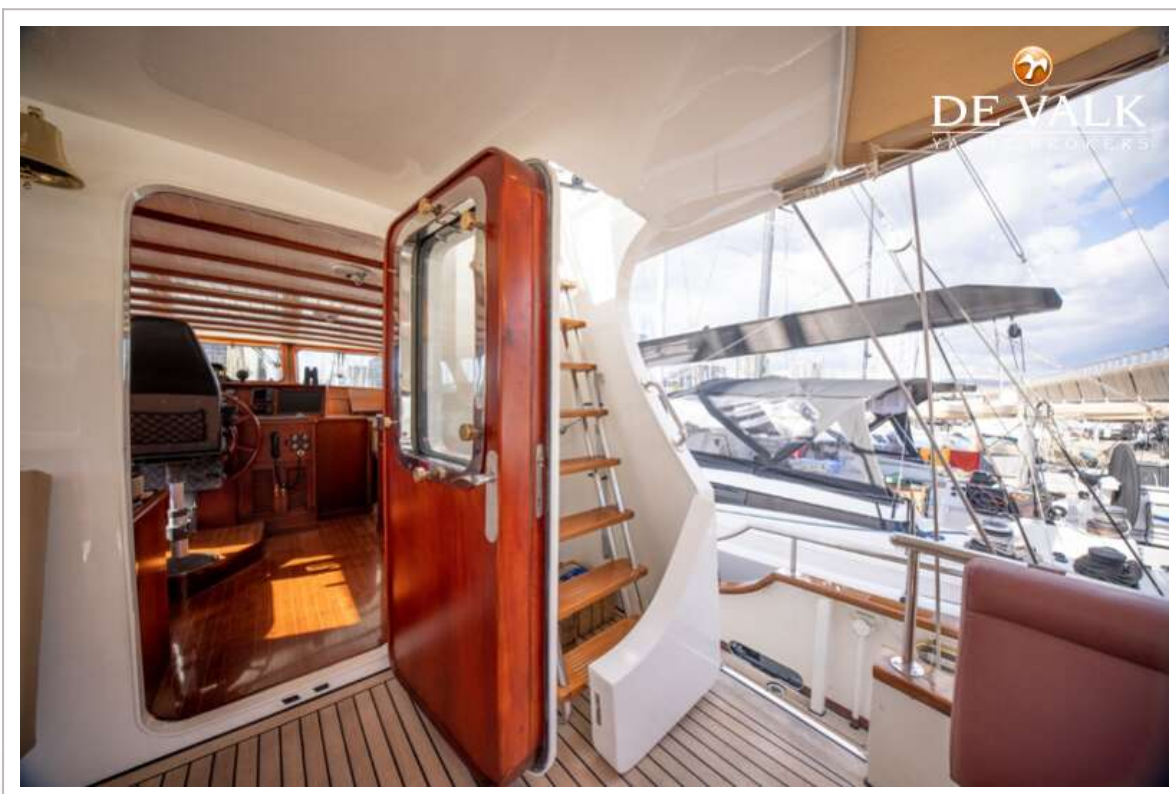
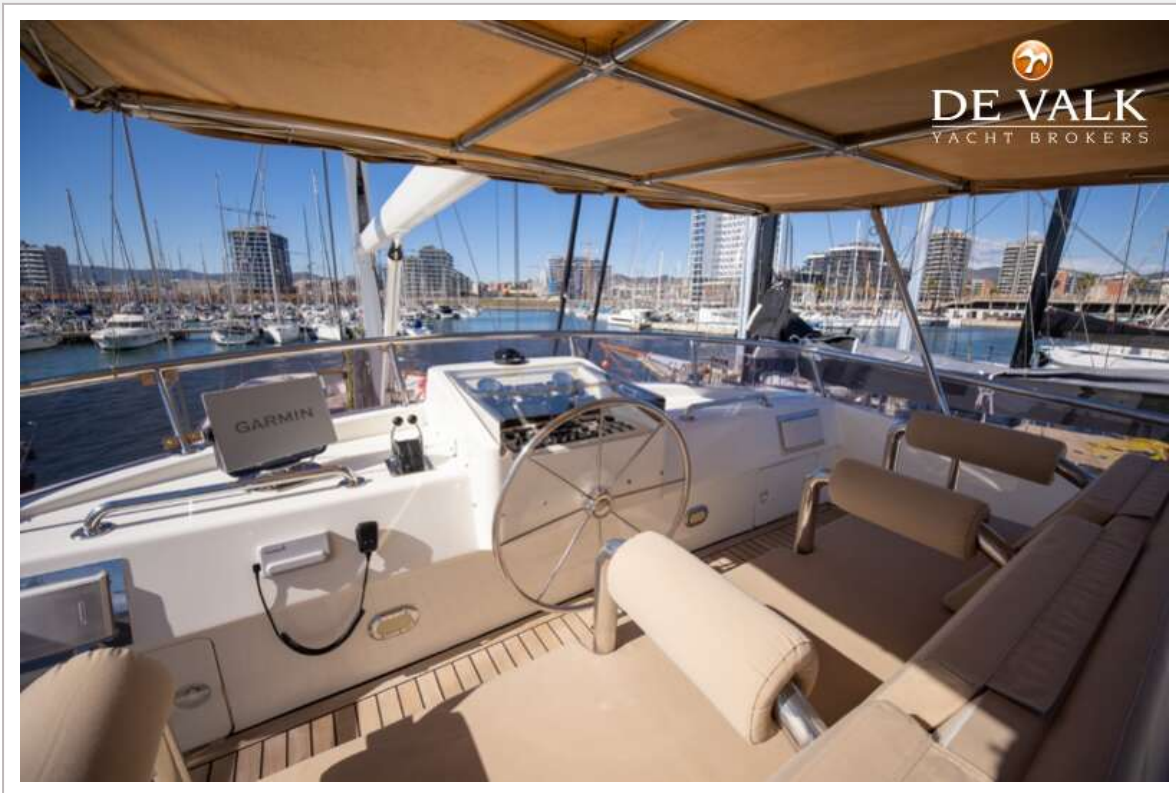
MOTORSAILER 23M



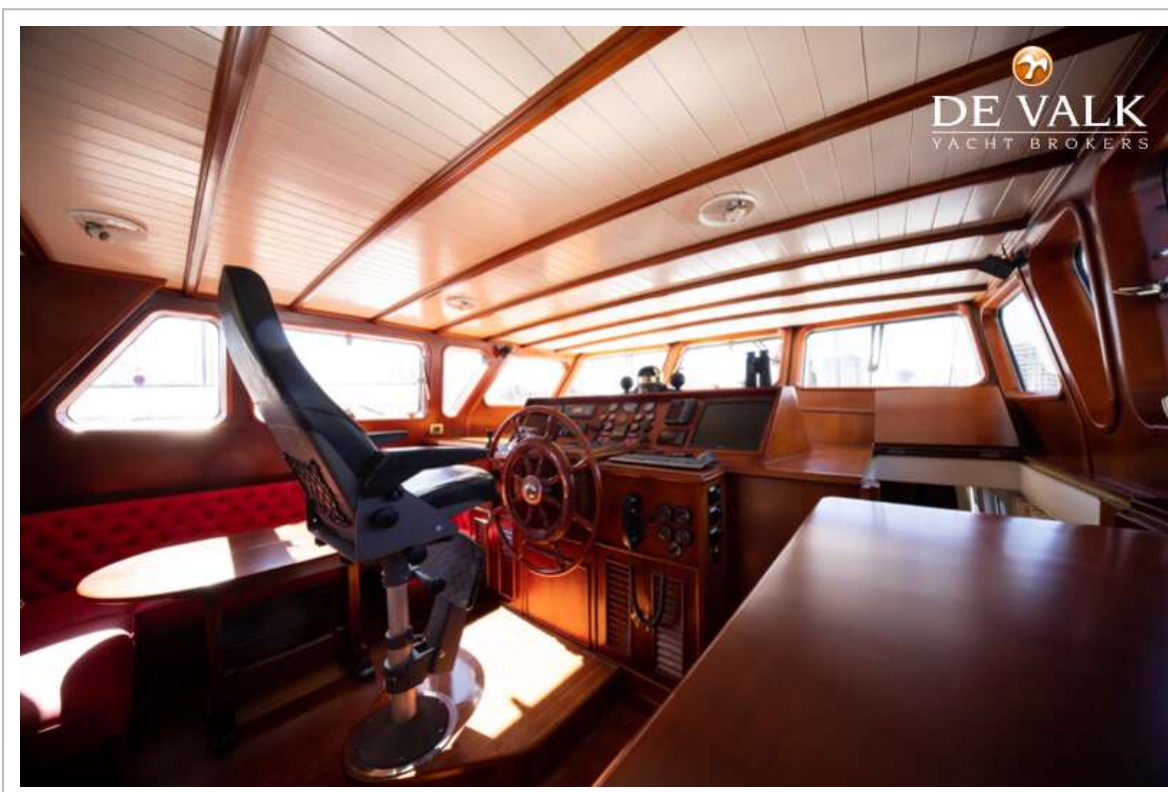
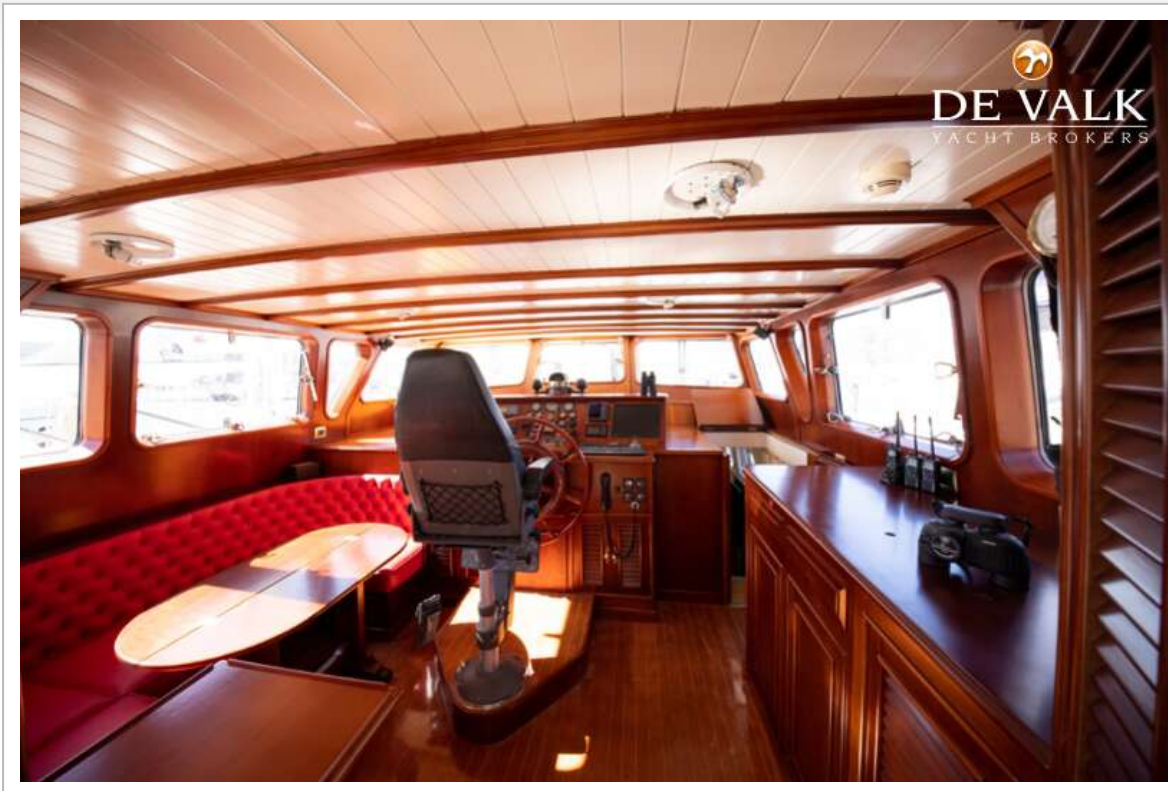
MOTORSAILER 23M



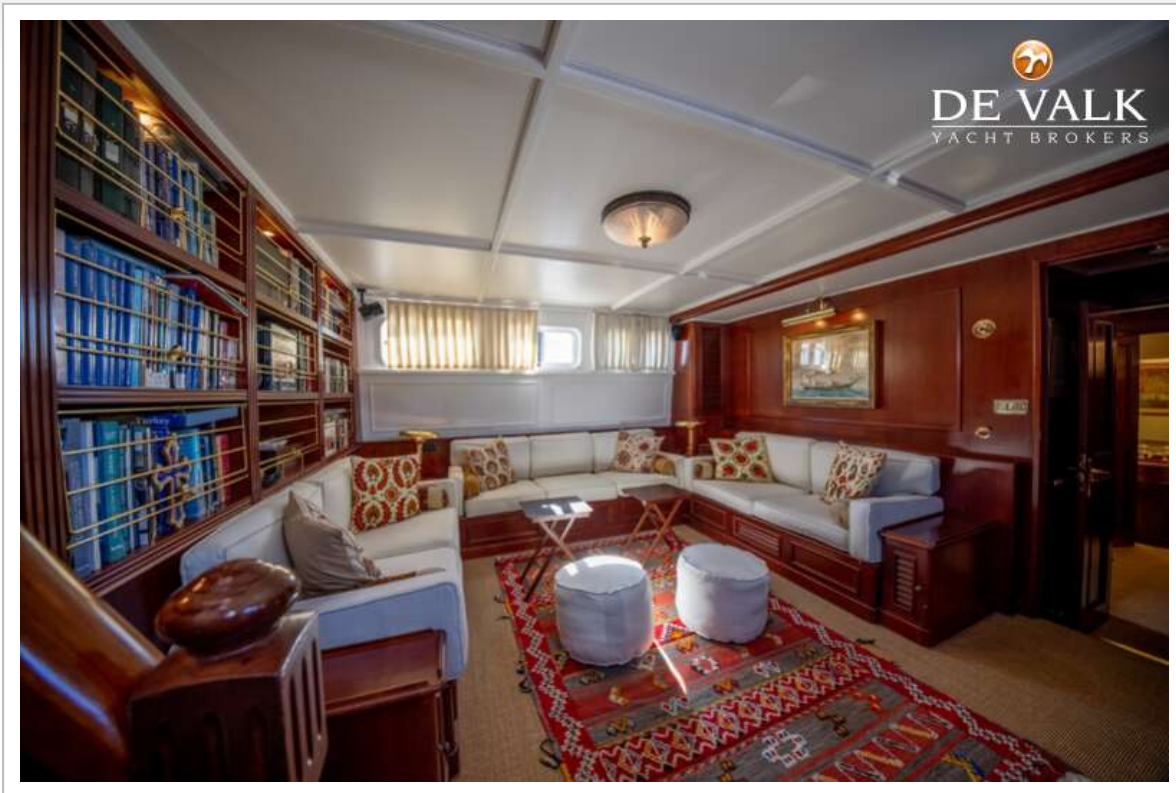
MOTORSAILER 23M



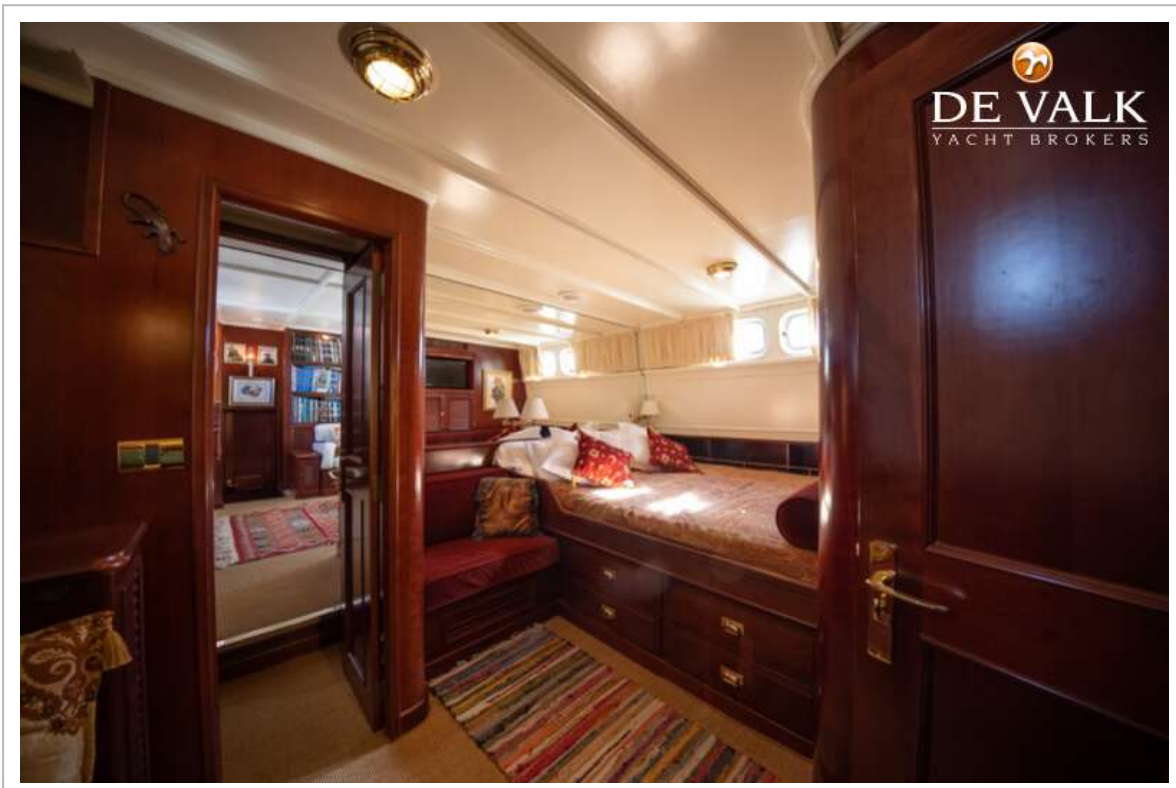
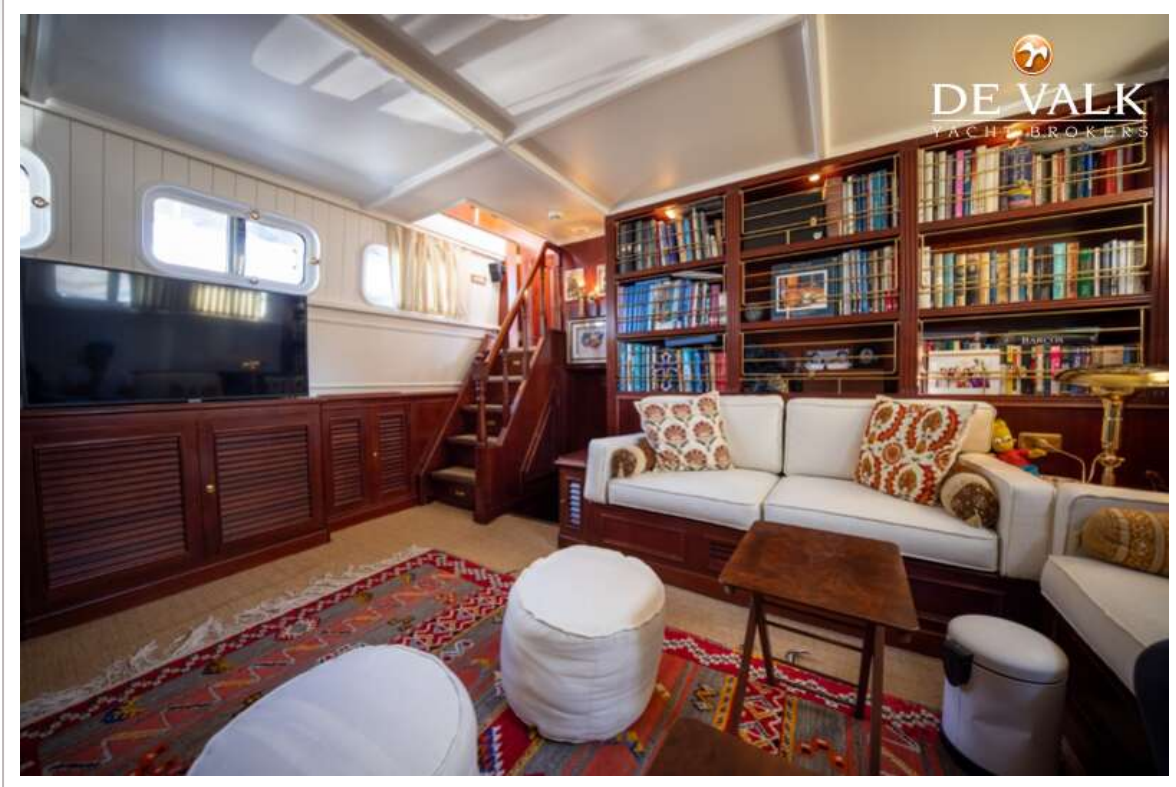
MOTORSAILER 23M



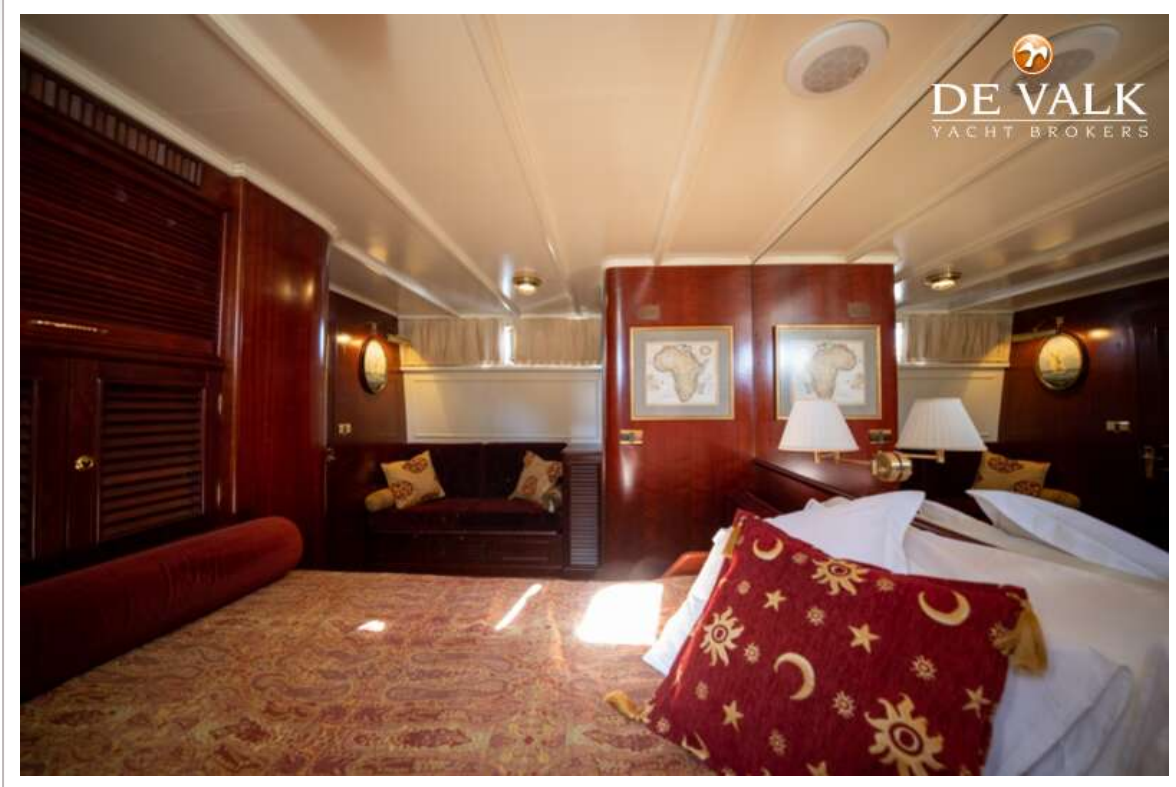
MOTORSAILER 23M



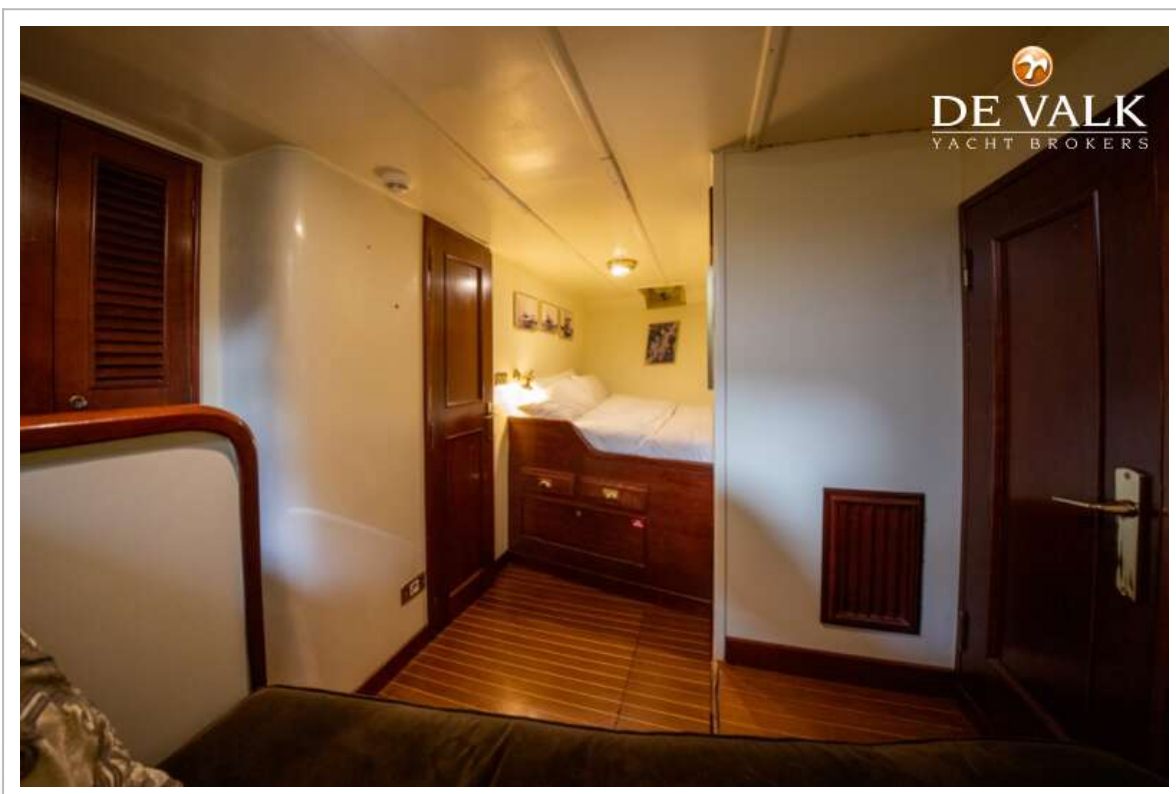
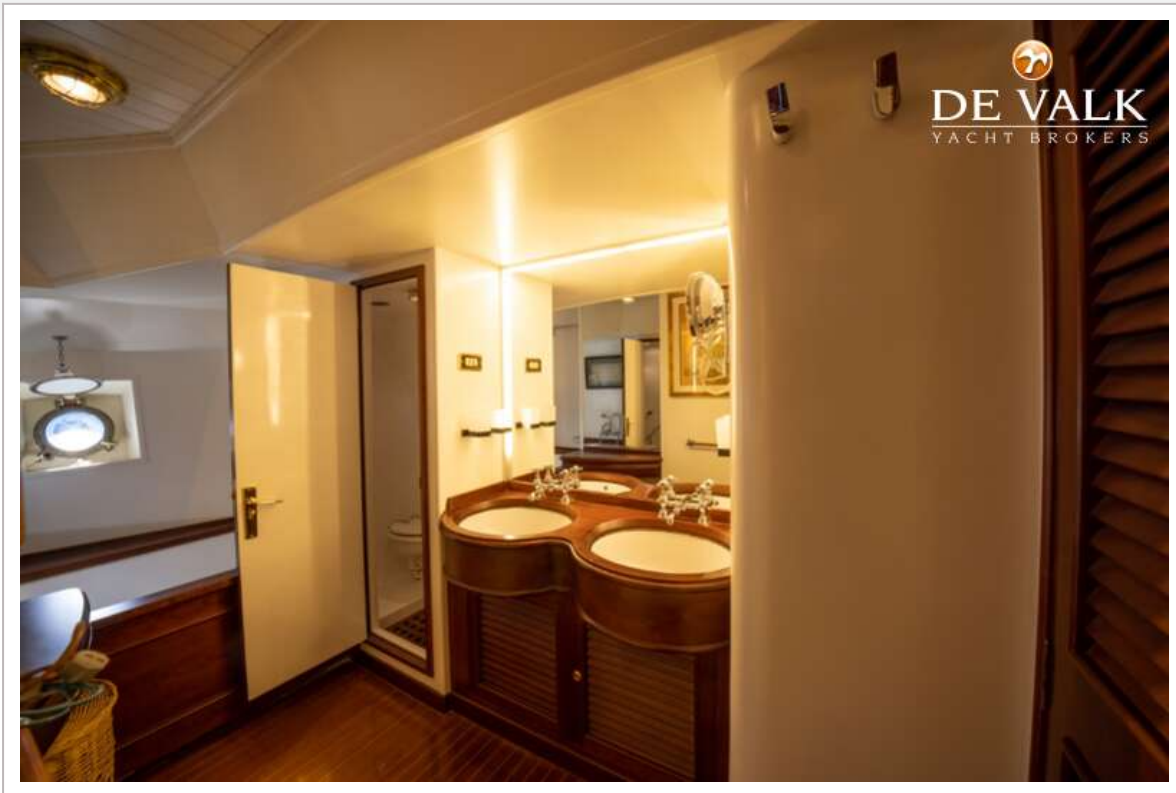
MOTORSAILER 23M



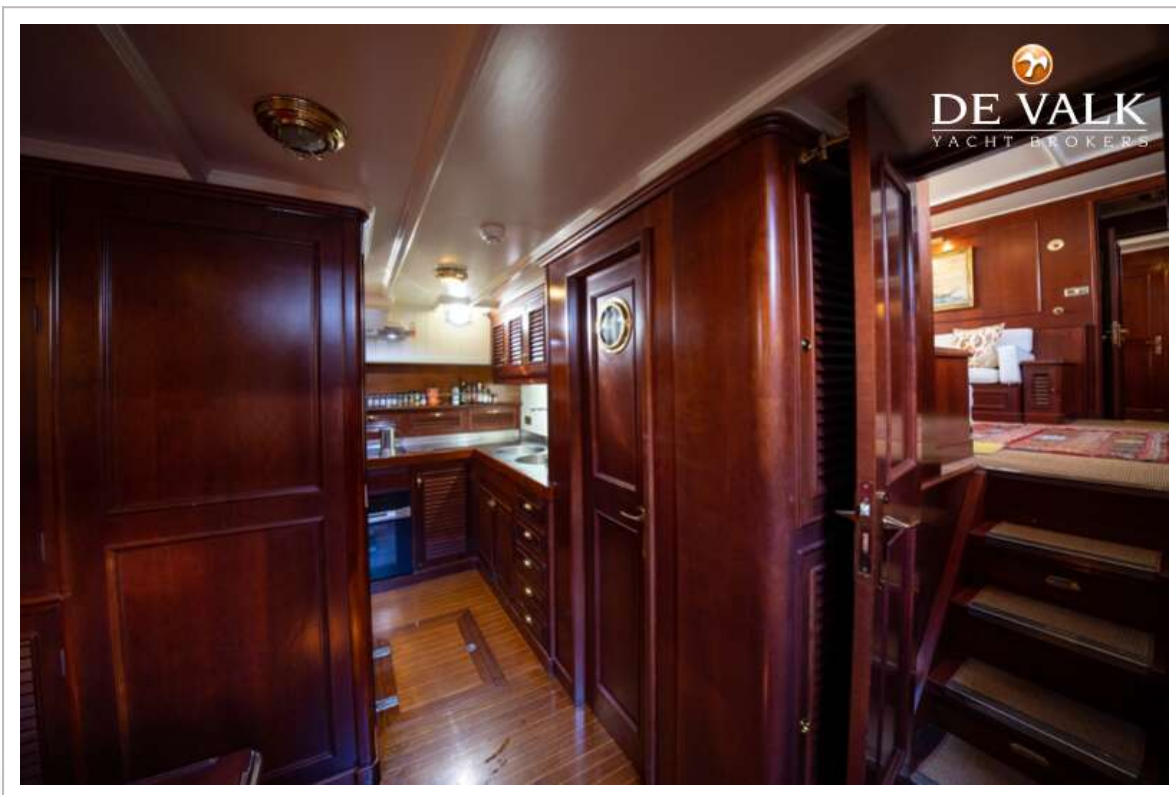
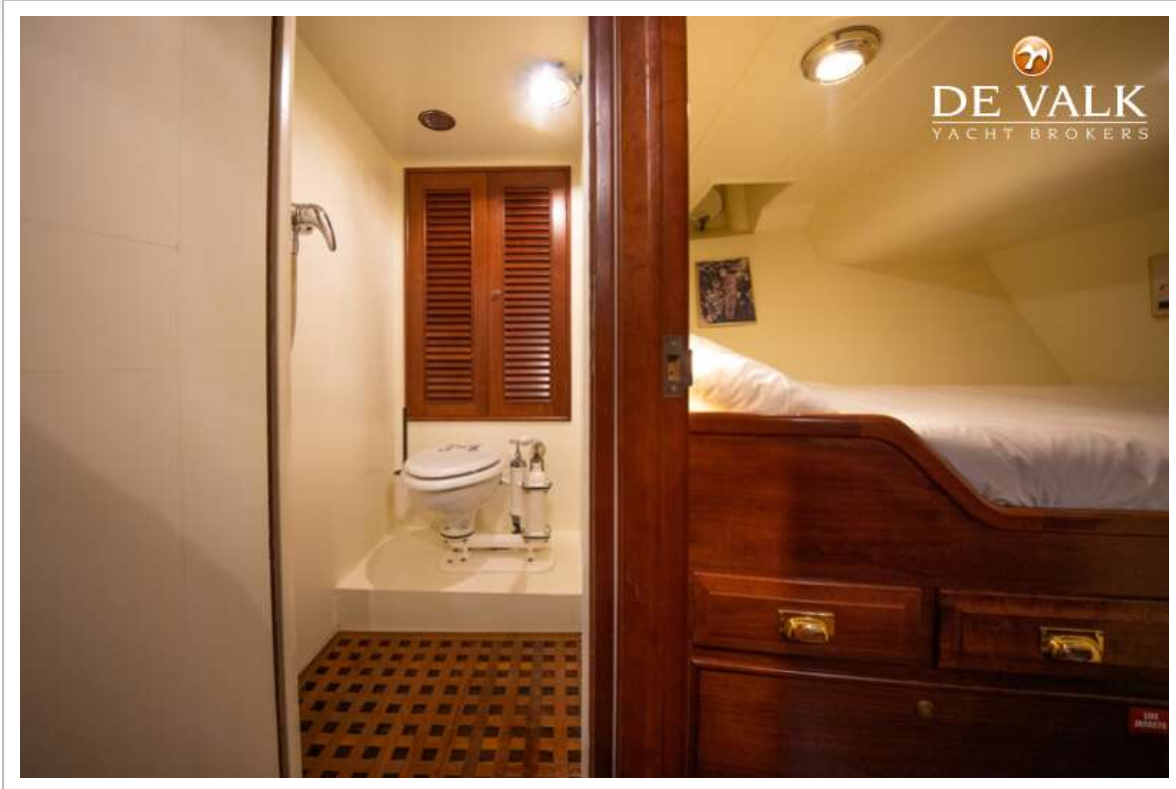
MOTORSAILER 23M



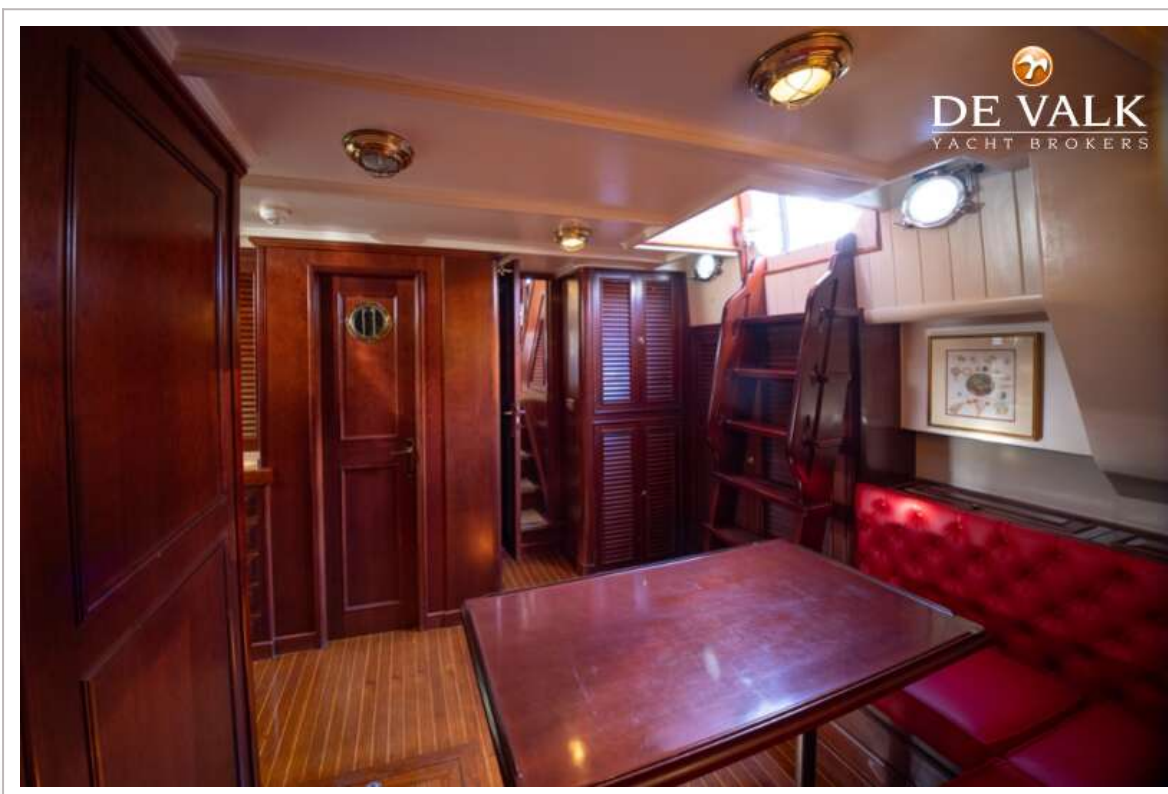
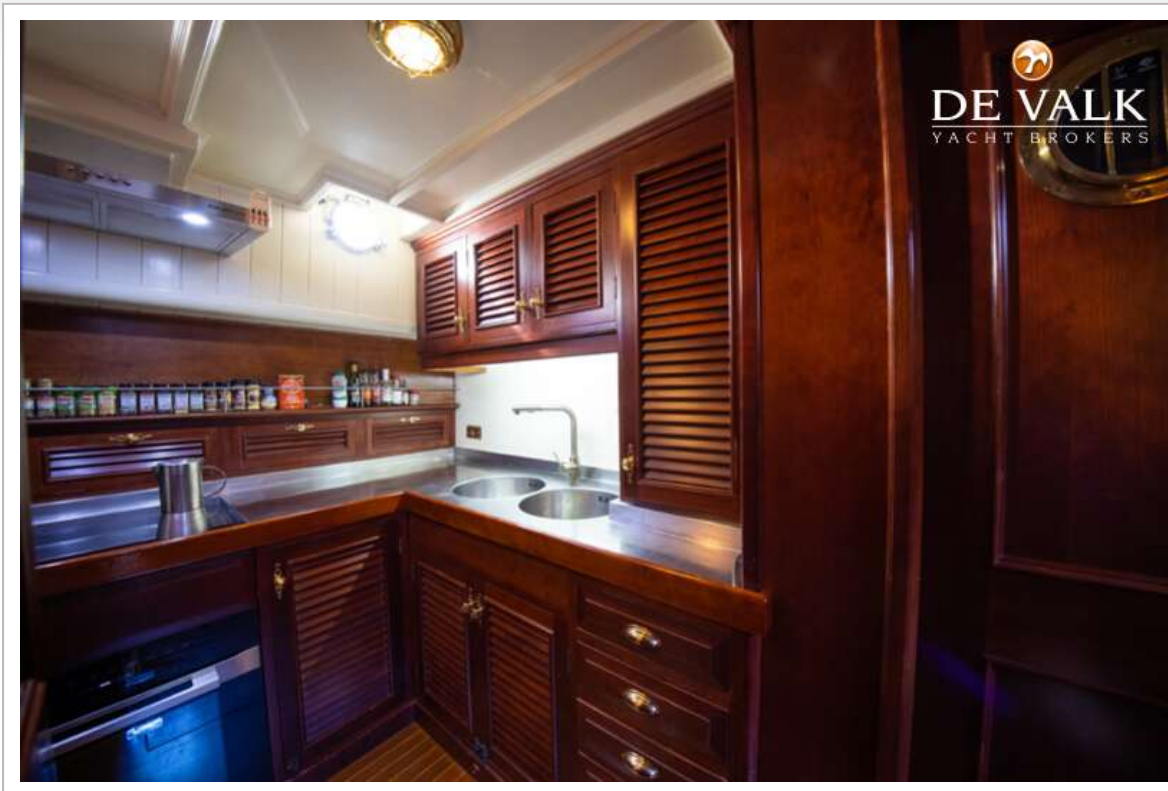
MOTORSAILER 23M



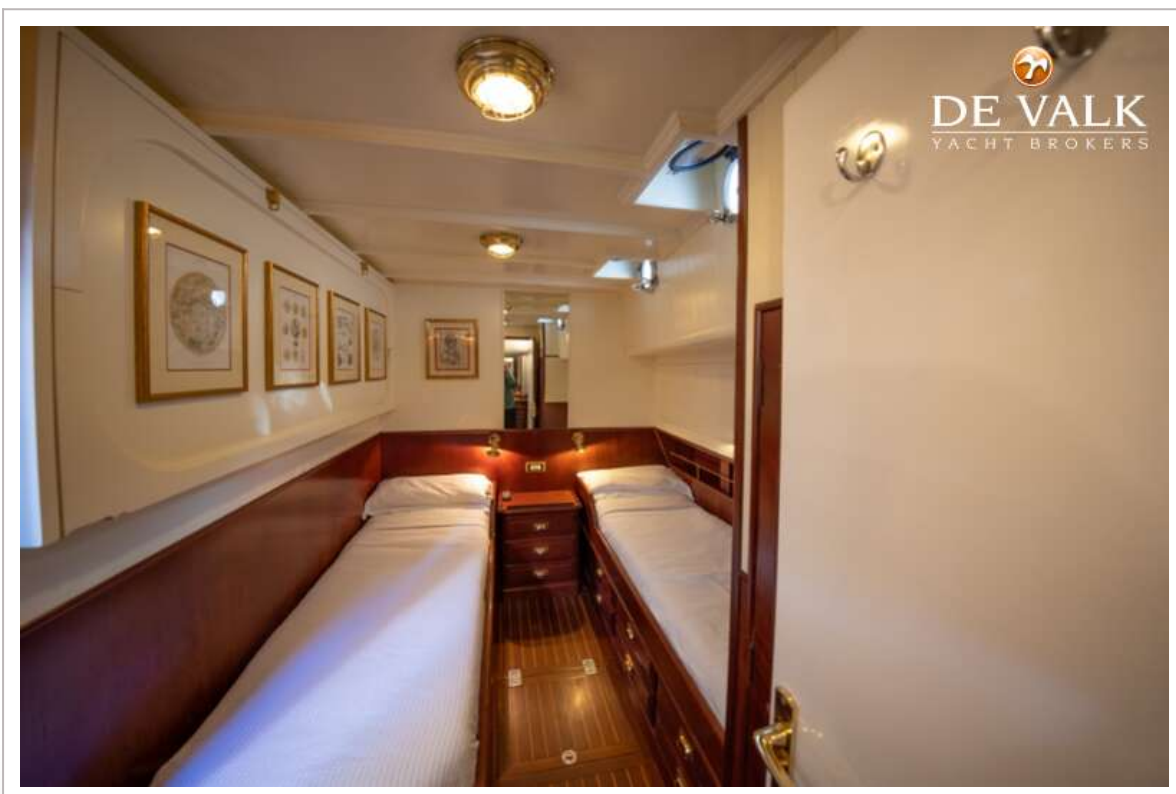
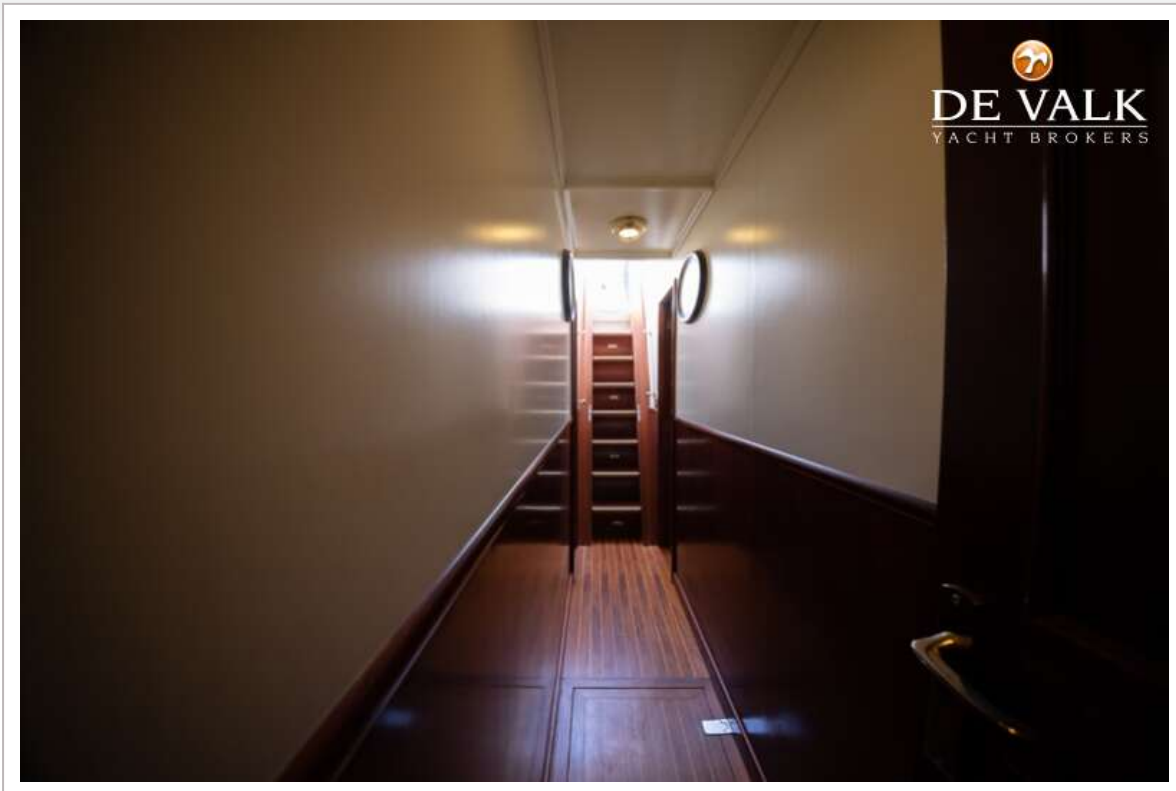
MOTORSAILER 23M



MOTORSAILER 23M



MOTORSAILER 23M



MOTORSAILER 23M

