



DE VALK  
YACHT BROKERS



LINSSEN GRAND STURDY 350 AC



DE VALK  
YACHT BROKERS

# LINSSSEN GRAND STURDY 350 AC

## BROKER'S COMMENTS

This Linssen Grand Sturdy 350 AC is ready to take beautiful trips, such as the French, Dutch or German inland waterways. For coastal waters, she is also extremely suitable. This motor yacht is available immediately. A good and high-quality boat, for which Linssen is renowned. Equipped with a bow and stern thruster and powerful engine, she is easy to sail and manoeuvre. The fore and aft cabin with double beds and the convertible dinette provide as many as 6 berths. An ideal boat for longer trips with family and friends, for example.

*Sjoerd Paddenburg*

## SPECIFICATIONS

<b>Dimensions</b>	10.70 x 3.40 x 1.00 (m)	<b>Builder</b>	Linssen Yachts
<b>Built</b>	2016	<b>Cabins</b>	2
<b>Material</b>	Steel	<b>Berths</b>	6
<b>Engine(s)</b>	1 x Volvo Penta D2-75 diesel	<b>Hp/Kw</b>	75.00 (hp), 55.20 (kw)
<b>Asking price</b>	sold (VAT )	<b>Lying</b>	at sales office

## CONTACT

<b>Sales office</b>	De Valk Loosdrecht B.V.	<b>Telephone</b>	+31 (0)35 582 90 30
<b>Address</b>	't Breukeleveense Meentje 6 1231LM Loosdrecht / Wijdmeren NL	<b>E-mail</b>	loosdrecht@devalk.nl

## DISCLAIMER

These particulars are given in good faith as supplied but cannot be guaranteed.



# LINSSEN GRAND STURDY 350 AC

## GENERAL

Model	LINSSEN GRAND STURDY 350 AC
Type	motor yacht
LOA (m)	10,70
Beam (m)	3,40
Draft (m)	1,00
Air draft min (m)	2,45
Year built	2016
Builder	Linssen Yachts
Country	The Netherlands
Displacement (t)	8,5
CE norm	C
Hull material	steel
Hull colour	grey
Keel type	long keel
Superstructure material	steel
Rubbing strake	fender rope
Deck material	steel
Deck finish	non-skid paint
Superstructure deck finish	paint
Cockpit deck finish	teak
Window frame	aluminium
Window material	double glazing
Deckhatch	yes
Portholes	aluminium
Insulation	glasswool
Mast can be lowered	manual
Fuel tank (litre)	steel 240
Level indicator (fuel tank)	Wema
Freshwater tank (litre)	polyethylene 220
Level indicator (freshwater)	Wema



Blackwater tank (litre)	polyethylene 240
Level indicator (blackwater)	Wema
Blackwater tank extraction	deck extraction + pump
Wheel steering	hydraulic
Outside helm position	hydraulic
Emergency tiller	yes

## ACCOMMODATION

Cabins	2
Berths	6
Interior	cherry
Floor	teak and holly
Aft deck	yes
Saloon	yes
Headroom saloon (m)	+/- 1.90
Heating	diesel ducted hot air Eberspächer (not working)
Aft Cabin	yes
Opening door to aft deck	yes
Galley	yes
Countertop	corian
Sink	stainless steel
Cooker	calor gas 3 burners ENO
Fridge	Waeco
Freezer	In frigde
Hot water system	220V + engine Calorifier
Water pressure system	electrical
Owners cabin	double bed
Wardrobe	hanging/drawers/shelves
Bathroom	en suite
Toilet	en suite
Toilet system	electric



# LINSSEN GRAND STURDY 350 AC

Wash basin	in the bathroom
Shower	en suite
Guest cabin 1	double bed
Wardrobe	drawers and shelves
Bathroom	en suite
Toilet	en suite
Toilet system	electric
Wash basin	at the toilet
Shower	separate
Extra info	2 extra cockpit lockers

## MACHINERY

No of engines	1
Make	Volvo Penta
Type	D2-75
HP	75
kW	55.20
Fuel	diesel
Engine hours	800
Engine cooling system	freshwater heat exchanger
Drive	shaft
Engine controls	bowden cable
Gearbox	hydraulic
Bowthruster	electric 12V / 55kgf with remote control
Sternthruster	electric With remote control
Exhaust	watercooled
Thrust bearing	yes
Propeller type	fixed
Propeller blades	4
Propeller shaft material	stainless steel
Shaft lubrication	water



Electric bilge pump	yes
Bilge alarm	yes
Start battery	2x Mastervolt AGM 12v/90Ah
Service battery	4x Mastervolt gel 12v/85Ah
Bowthruster battery	yes
Battery monitor	Mastervolt
Battery charger/inverter	Mastervolt
Shorepower	with cable

## NAVIGATION

Depth sounder	Raymarine
Log	Raymarine
Autopilot	Raymarine
Rudder angle indicator	In autopilot
Plotter/GPS	Raymarine A series
Navigation lights	yes

## EQUIPMENT

Cockpit cover	to be renewed
Bathing platform	yes
Boarding ladder	stainless steel
Deck shower	yes
Anchor	yes
Anchor chain	yes
Windlass	electrical Quick
Sea railing	stainless steel
Grab rail (superstructure)	stainless steel
Railing side opening gates	yes
Wiper	2x
Horn	electric
Fenders	yes



# LINSSEN GRAND STURDY 350 AC

Mooring lines	yes
TV	Avtex
Radio	Fusion MSRA205
Cockpit speakers	yes
Speakers in salon	Visaton
Auto extinguisher system	yes



# LINSSEN GRAND STURDY 350 AC





# LINSSEN GRAND STURDY 350 AC



# LINSSEN GRAND STURDY 350 AC

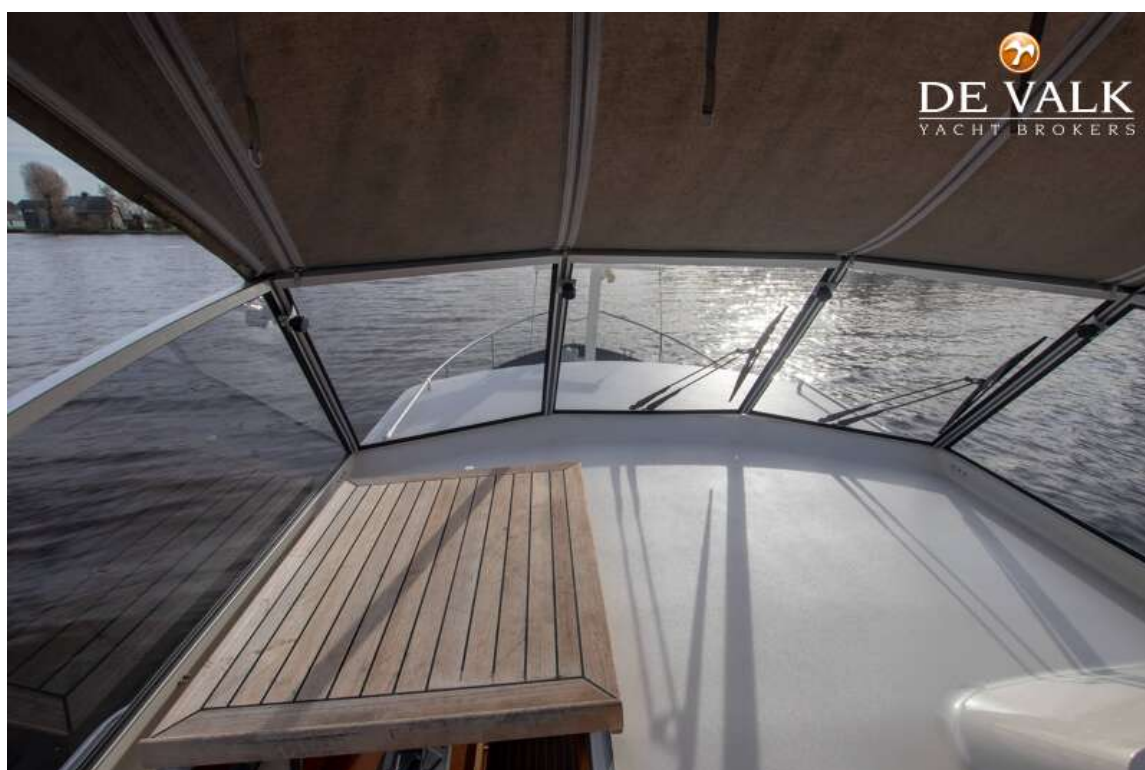




# LINSSEN GRAND STURDY 350 AC



# LINSSEN GRAND STURDY 350 AC





# LINSSEN GRAND STURDY 350 AC



# LINSSEN GRAND STURDY 350 AC





# LINSSEN GRAND STURDY 350 AC

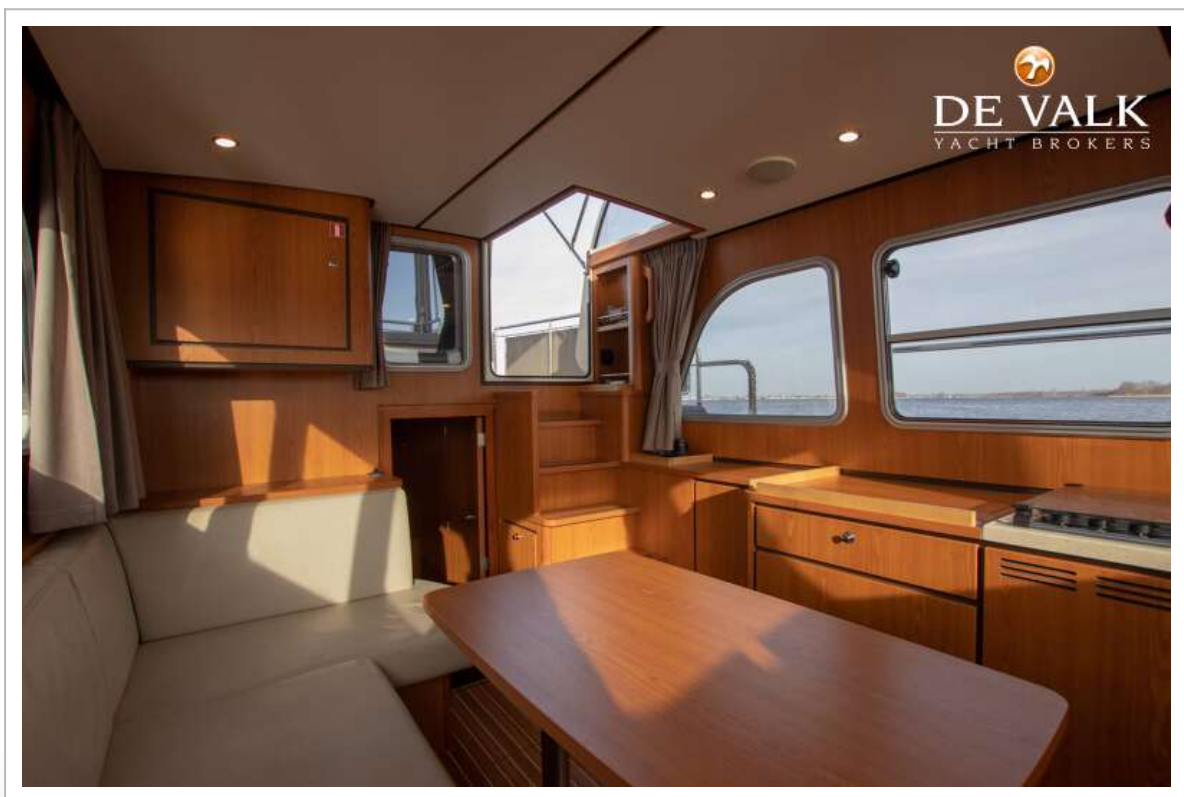
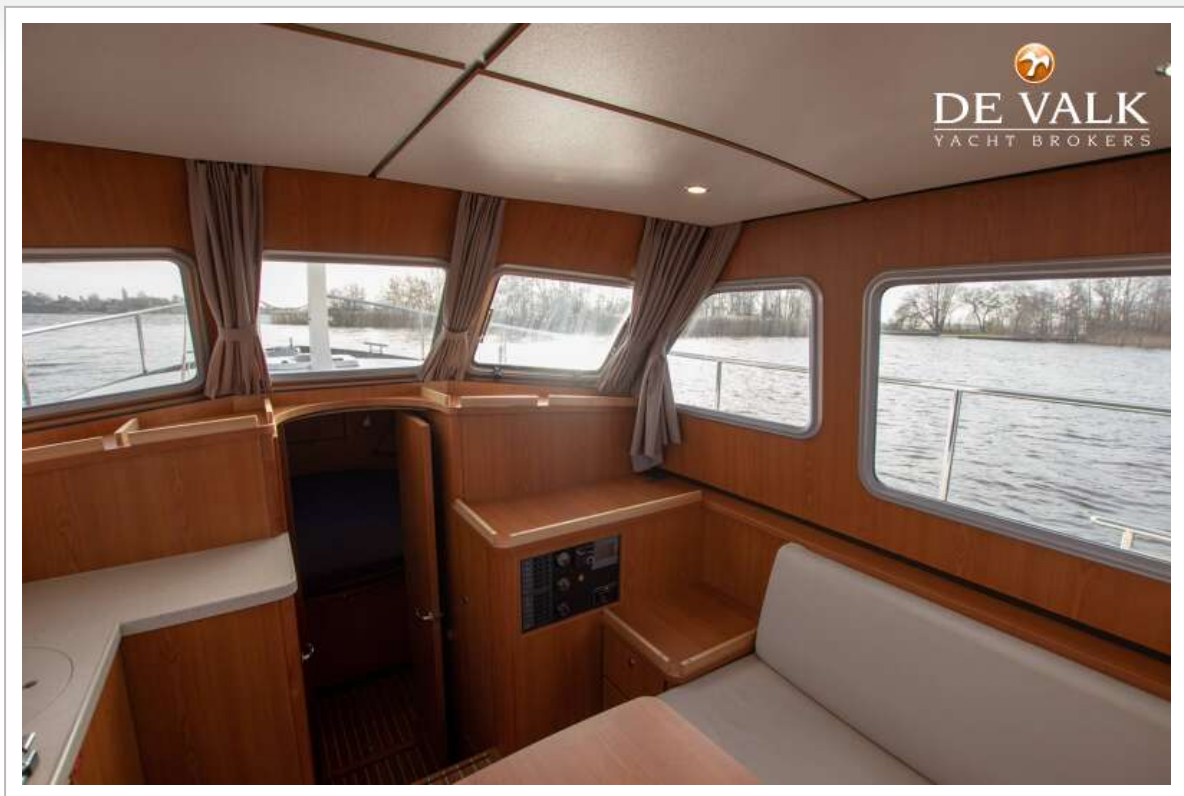


# LINSSEN GRAND STURDY 350 AC





# LINSSEN GRAND STURDY 350 AC

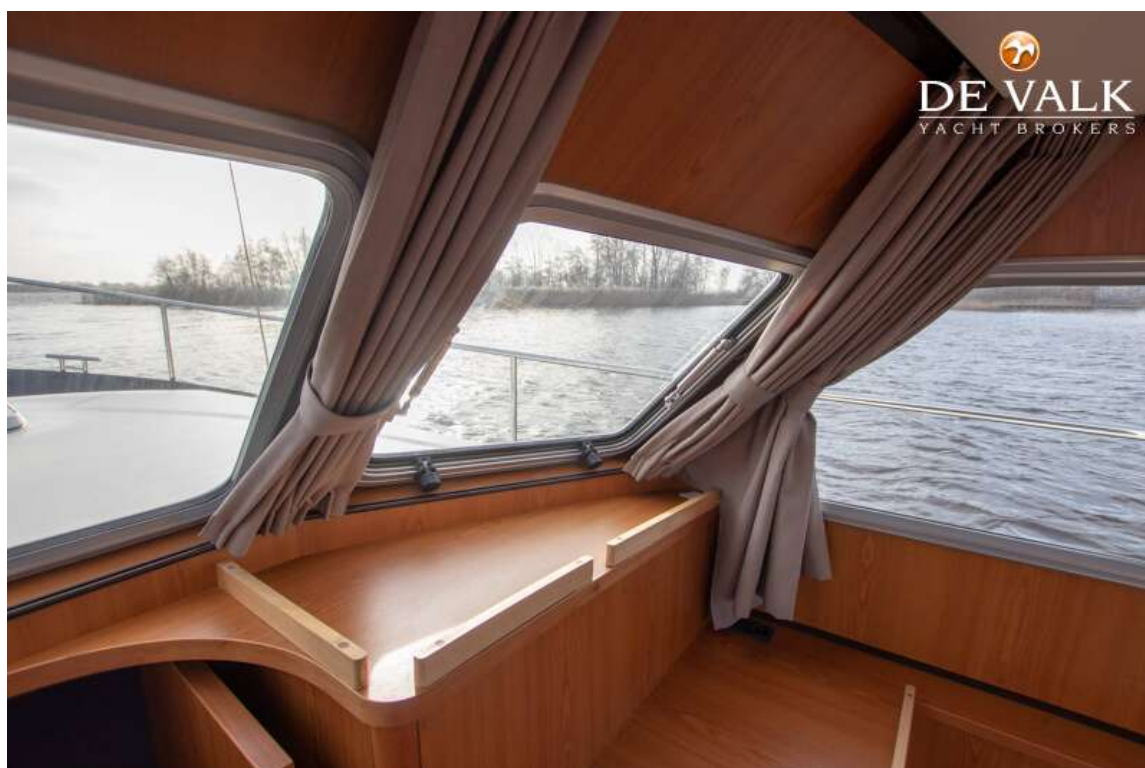


# LINSSEN GRAND STURDY 350 AC





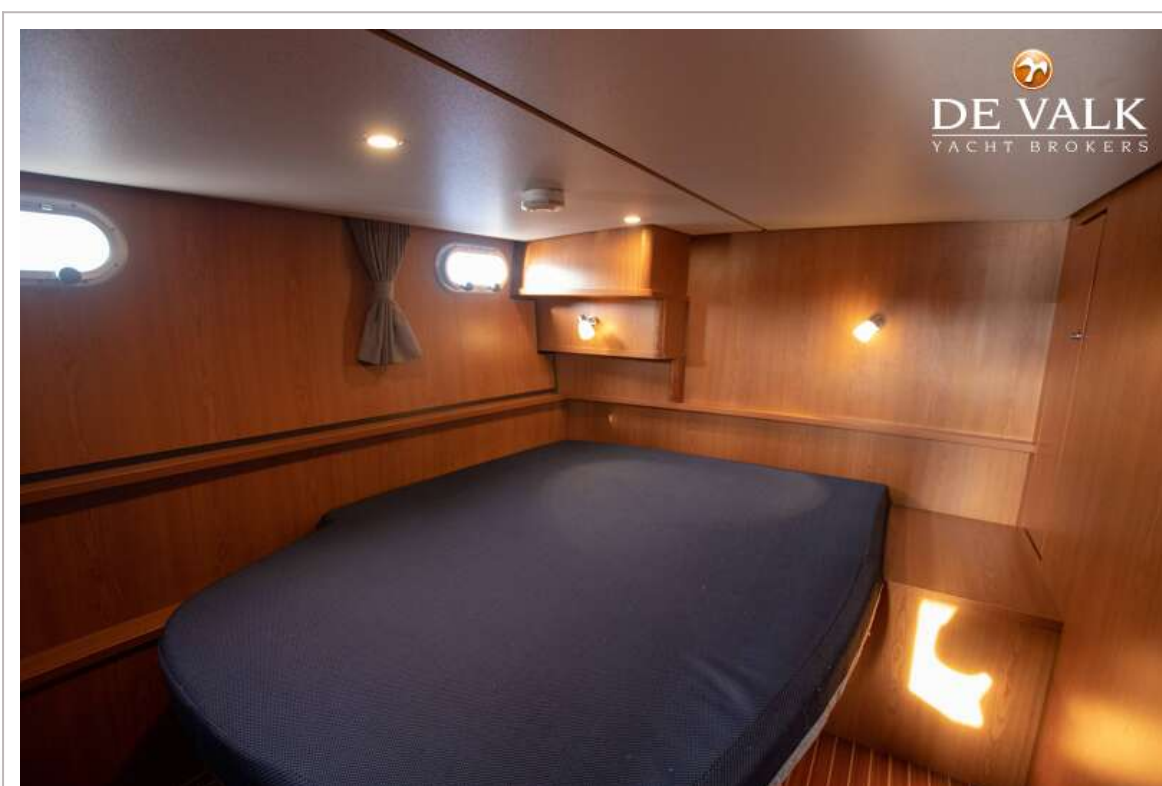
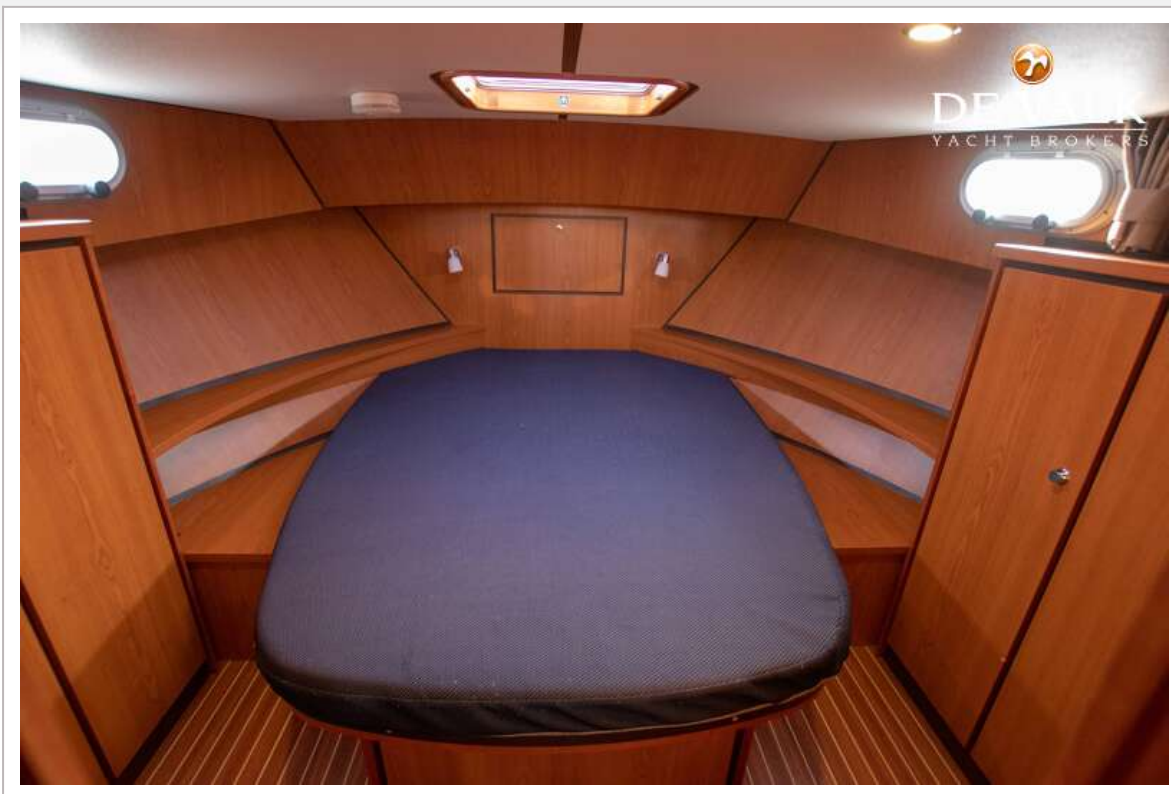
# LINSSEN GRAND STURDY 350 AC



# LINSSEN GRAND STURDY 350 AC

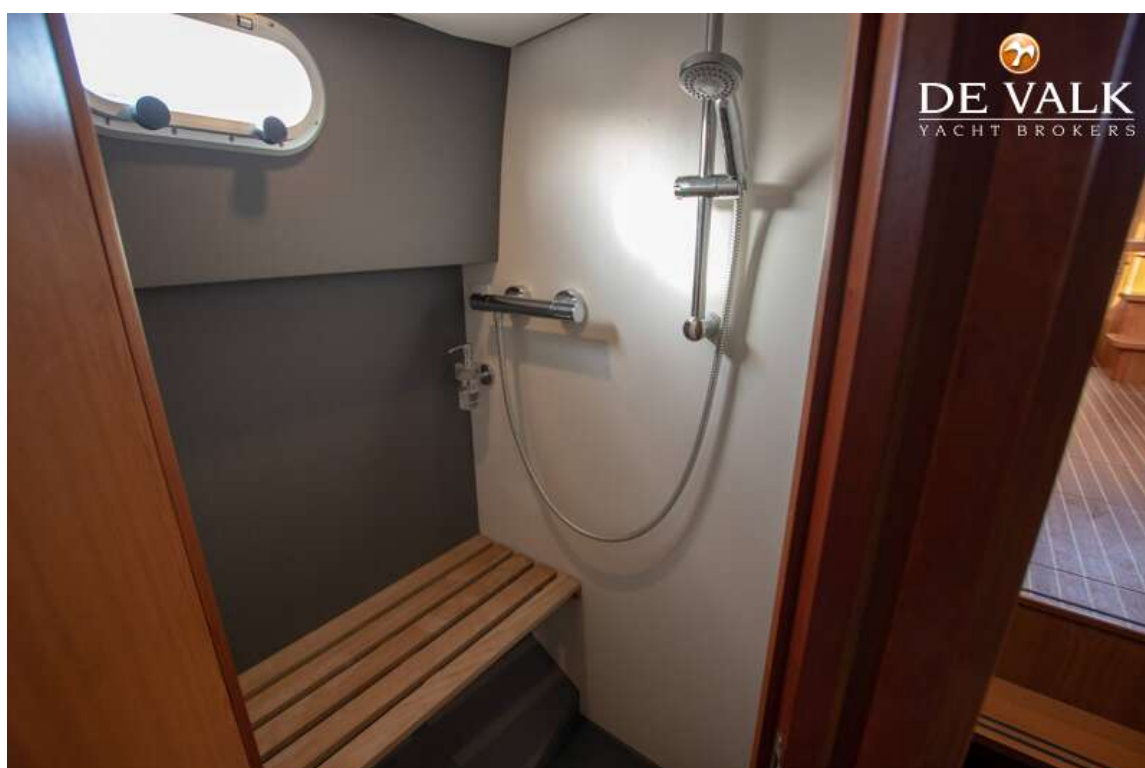


# LINSSEN GRAND STURDY 350 AC

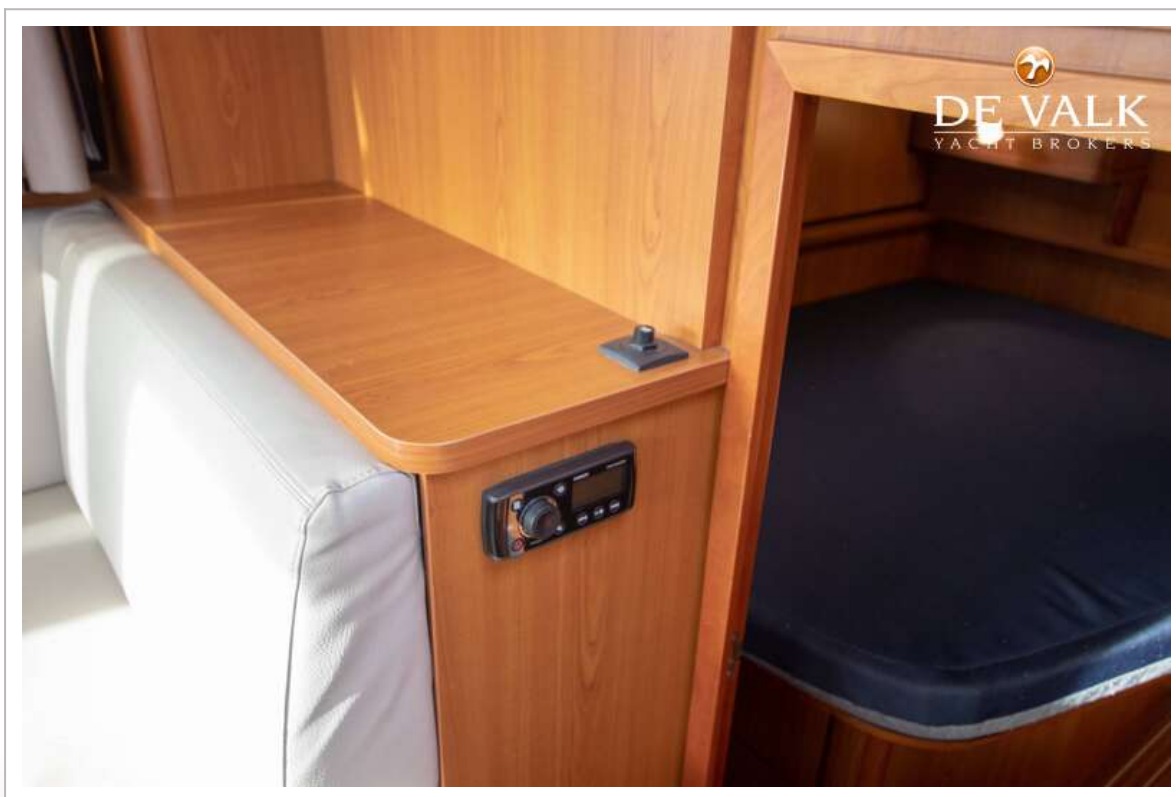
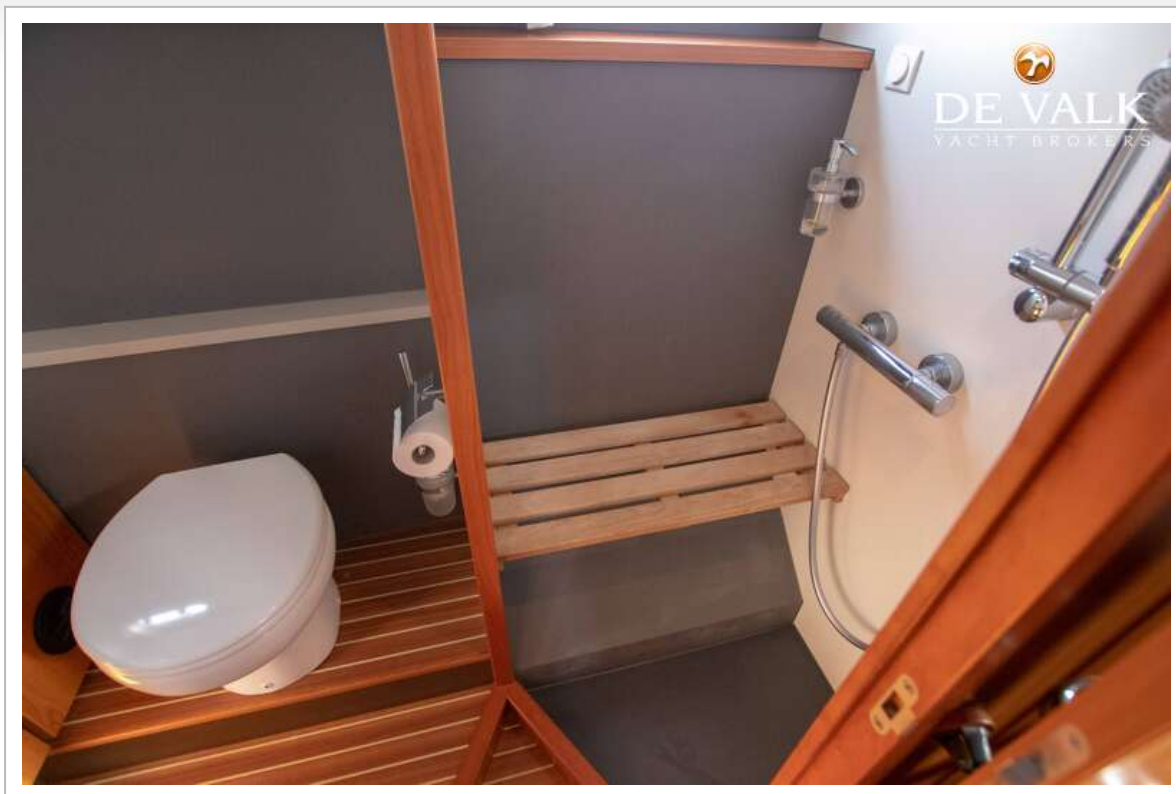




# LINSSEN GRAND STURDY 350 AC



# LINSSEN GRAND STURDY 350 AC



# LINSSEN GRAND STURDY 350 AC





