



DE VALK  
YACHT BROKERS



## DUFOUR 412 GRAND LARGE



DE VALK  
YACHT BROKERS

# DUFOUR 412 GRAND LARGE

## BROKER'S COMMENTS

The Dufour 412 GL was developed boldly and innovatively. The yacht impresses skipper and crew. The helm area is precisely tailored to the skipper to make maneuvering easier. The crew is offered a spacious cockpit, wide side decks and an extended bathing platform. The Dufour designers clearly focused on optimizing the space on board with appropriate functions. This increases the quality of life on board when cruising. In particular, the excellent sailing characteristics and the good, extensive trimming make her an rewarding cruiser.

*Jörg Hellmich*

## SPECIFICATIONS

|                     |                               |                |                        |
|---------------------|-------------------------------|----------------|------------------------|
| <b>Dimensions</b>   | 12.35 x 4.20 x 2.10 (m)       | <b>Builder</b> | Dufour Yachts          |
| <b>Built</b>        | 2016                          | <b>Cabins</b>  | 3                      |
| <b>Material</b>     | GRP                           | <b>Berths</b>  | 7                      |
| <b>Engine(s)</b>    | 1 x Volvo Penta D2-F55 diesel | <b>Hp/Kw</b>   | 55.00 (hp), 40.48 (kw) |
| <b>Asking price</b> | € 135.000 (VAT Not paid)      | <b>Lying</b>   | contact sales office   |

## CONTACT

|                     |   |                  |                   |
|---------------------|---|------------------|-------------------|
| <b>Sales office</b> | De Valk Almeria   | <b>Telephone</b> | +34 950 497 825   |
| <b>Address</b>      | Puerto Deportivo, Darsena de la Batea 42<br>04711 Almerimar<br>ES | <b>E-mail</b>    | almeria@devalk.nl |

## DISCLAIMER

These particulars are given in good faith as supplied but cannot be guaranteed.



# DUFOUR 412 GRAND LARGE

## GENERAL

|                             |                        |
|-----------------------------|------------------------|
| Model                       | DUFOUR 412 GRAND LARGE |
| Type                        | sailing yacht          |
| LOA (m)                     | 12,35                  |
| LWL (m)                     | 11,15                  |
| Beam (m)                    | 4,20                   |
| Draft (m)                   | 2,10                   |
| Air draft (m)               | 18,00                  |
| Headroom (m)                | 1,95                   |
| Year built                  | 2016                   |
| Builder                     | Dufour Yachts          |
| Country                     | France                 |
| Designer                    | Umberto Felci          |
| Displacement (t)            | 8,94                   |
| Ballast (tonnes)            | 2,6                    |
| CE norm                     | A                      |
| Hull material               | GRP                    |
| Hull colour                 | white                  |
| Hull shape                  | round-bilged           |
| Keel type                   | fin keel with bulb     |
| Superstructure material     | GRP                    |
| Deck material               | GRP                    |
| Deck finish                 | non-skid moulded in    |
| Superstructure deck finish  | non-skid moulded in    |
| Cockpit deck finish         | teak                   |
| Window frame                | aluminium              |
| Window material             | perspex                |
| Deckhatch                   | Lewmar Flush           |
| Portholes                   | aluminium              |
| Fuel tank (litre)           | polyethylene 200       |
| Level indicator (fuel tank) | Display                |



# DUFOUR 412 GRAND LARGE

|                              |                                   |
|------------------------------|-----------------------------------|
| Freshwater tank (litre)      | polyethylene 380                  |
| Level indicator (freshwater) | Display                           |
| Blackwater tank (litre)      | 2 tanks                           |
| Wheel steering               | cable steering Twin Helm Whitlock |
| Emergency tiller             | yes                               |

## ACCOMMODATION

|                       |                                    |
|-----------------------|------------------------------------|
| Cabins                | 3                                  |
| Berths                | 7                                  |
| Layout                | 3 cabin version                    |
| Floor                 | wood                               |
| Saloon                | yes                                |
| Headroom saloon (m)   | 1,95                               |
| Chart table           | yes                                |
| Convertible berth     | In saloon                          |
| Galley                | L_shape                            |
| Countertop            | corian                             |
| Sink                  | stainless steel Double             |
| Cooker                | calor gas Eno 2 burner             |
| Oven                  | Eno                                |
| Fridge                | Top & front loader                 |
| Freezer               | yes                                |
| Hot water system      | 220V + engine Boiler (new 2024)    |
| Water pressure system | electrical                         |
| Hot water tap         | yes                                |
| Crockery              | yes                                |
| Guest cabin 1         | v-bed Forward                      |
| Bed length (m)        | 2,00 x 1,40                        |
| Wardrobe              | hanging and shelves                |
| Toilet                | en suite                           |
| Toilet system         | electric Jabsco Comfort (new seat) |



# DUFOUR 412 GRAND LARGE

|                |   |
|----------------|---|
| Wash basin     | at the toilet New fittings              |
| Shower         | en suite                                |
| Guest cabin 2  | double bed Aft Port                     |
| Bed length (m) | 2,00 x1,60                              |
| Wardrobe       | hanging and shelves                     |
| Toilet         | shared                                  |
| Toilet system  | electric Jabsco comfort (new seat 2024) |
| Wash basin     | at the toilet New tabs (2024)           |
| Shower         | shared                                  |
| Guest cabin 3  | double bed Aft STB                      |
| Bed length (m) | 2,00 x 1,60                             |
| Wardrobe       | hanging and shelves                     |

## MACHINERY

|                       |                           |
|-----------------------|---------------------------|
| No of engines         | 1                         |
| Make                  | Volvo Penta               |
| Type                  | D2-F55                    |
| HP                    | 55                        |
| kW                    | 40.48                     |
| Fuel                  | diesel                    |
| Year installed        | 2016                      |
| Maximum speed (kn)    | 8,10                      |
| Cruising speed (kn)   | 6                         |
| Consumption (l/hr)    | 3                         |
| Range (nm)            | 390                       |
| Engine hours          | 1926                      |
| Engine cooling system | freshwater heat exchanger |
| Drive                 | sail-drive                |
| Saildrive seal        | SD130S                    |
| Engine controls       | bowden cable              |
| Gearbox               | mechanical                |



# DUFOUR 412 GRAND LARGE

|                                 |                          |
|---------------------------------|--------------------------|
| <b>Bowthruster</b>              | electric Jet thruster    |
| <b>Exhaust</b>                  | watercooled              |
| <b>Propeller type</b>           | folding                  |
| <b>Propeller blades</b>         | 3                        |
| <b>Propeller shaft material</b> | stainless steel          |
| <b>Shaft lubrication</b>        | water                    |
| <b>Manual bilge pump</b>        | Whale Smart              |
| <b>Electric bilge pump</b>      | Whale Supersub           |
| <b>Electrical installation</b>  | 12V System               |
| <b>Start battery</b>            | 1 x 12V / 100 Ah Acid    |
| <b>Service battery</b>          | 4 x 12V / 140 Ah Acid    |
| <b>Bowthruster battery</b>      | yes                      |
| <b>Battery monitor</b>          | Display                  |
| <b>Battery charger</b>          | Cristec YPower 12V / 40A |
| <b>Inverter</b>                 | Sinewave Power 300W      |
| <b>Solar panel</b>              | yes                      |
| <b>Diode battery combiners</b>  | yes                      |
| <b>Shorepower</b>               | with cable 230V (30m)    |

## NAVIGATION

|                               |                                 |
|-------------------------------|---------------------------------|
| <b>Compass</b>                | 2 x Olympic 115                 |
| <b>Multi control display</b>  | Raymarine i70                   |
| <b>Depth sounder/log</b>      | Raymarine i70                   |
| <b>Windset</b>                | Raymarine i70 (STB new display) |
| <b>VHF</b>                    | Raymarine Ray 50 DSC            |
| <b>Autopilot</b>              | Raymarine p70s (new display)    |
| <b>Rudder angle indicator</b> | Raymarine i70                   |
| <b>Plotter/GPS</b>            | Axiom 7 Touchscreen             |
| <b>Electronic chart(s)</b>    | Navionics Med. Sea (2016)       |
| <b>Navigation lights</b>      | LED                             |



# DUFOUR 412 GRAND LARGE

## EQUIPMENT

|                            |   |
|----------------------------|---|
| Sprayhood                  | NV Equipment  |
| Bimini                     | NV Equipment (new 2025)                               |
| Cockpit cushions           | yes   |
| Cockpit table              | yes   |
| Bathing platform           | Retractable   |
| Boarding ladder            | stainless steel                                       |
| Gangway                    | Swiss Terch CL250 (new 2024)                          |
| Deck shower                | Whale Twist (h&c)                                     |
| Anchor                     | Cobra (25kg)  |
| Anchor chain               | 80 m (10mm)   |
| Anchor 2                   | Brittany 14 kg  |
| Windlass                   | electrical Lewmar CPX 1000W with Quick remote control |
| Dinghy                     | rigid inflatable New 2024                             |
| Outboard                   | Spirit 1.0 Plus, 3 hp - electric (new 2024)           |
| Outboard support           | yes   |
| Sea railing                | wire  |
| Grab rail (superstructure) | teak  |
| Railing side opening gates | yes   |
| Pushpit                    | yes   |
| Pulpit                     | yes   |
| Life raft                  | valise (or bag)                                       |
| Life raft (pers)           | 8   |
| Lifejackets                | yes   |
| Safety harness             | yes   |
| Lifebuoy                   | yes   |
| Binocular                  | yes   |
| Fenders                    | yes   |
| Mooring lines              | yes   |
| Spare parts                | yes   |
| Tools                      | yes   |



# DUFOUR 412 GRAND LARGE

|                   |         |
|-------------------|---------|
| Radio-cd player   | Pioneer |
| iPod connection   | yes     |
| Cockpit speakers  | Marine  |
| Speakers in salon | yes     |
| Clock - barometer | yes     |
| Fire extinguisher | 3 x 2kg |

## RIGGING

|                         |                                 |
|-------------------------|---------------------------------|
| Rigging                 | fractional Sloop                |
| Standing rigging        | wire                            |
| Brand mast              | Z-Spar                          |
| Material mast           | aluminium                       |
| Spreaders               | yes                             |
| Mainsail                | ELV / TNF                       |
| Genoa                   | ELV / TNF                       |
| Genoa furler            | Facnor LS180                    |
| Reefing System          | main in-mast furling            |
| Backstay adjuster       | mechanical                      |
| Boomvang                | mechanical and tackle Z-511     |
| Primary sheet winch     | 2 x Lewmar EVO 45 ST AB         |
| Halyard winches         | Lewmar EVO 40 ST AB             |
| Multifunctional winches | Lewmar EVO 40 STE AB (electric) |





# DUFOUR 412 GRAND LARGE



# DUFOUR 412 GRAND LARGE

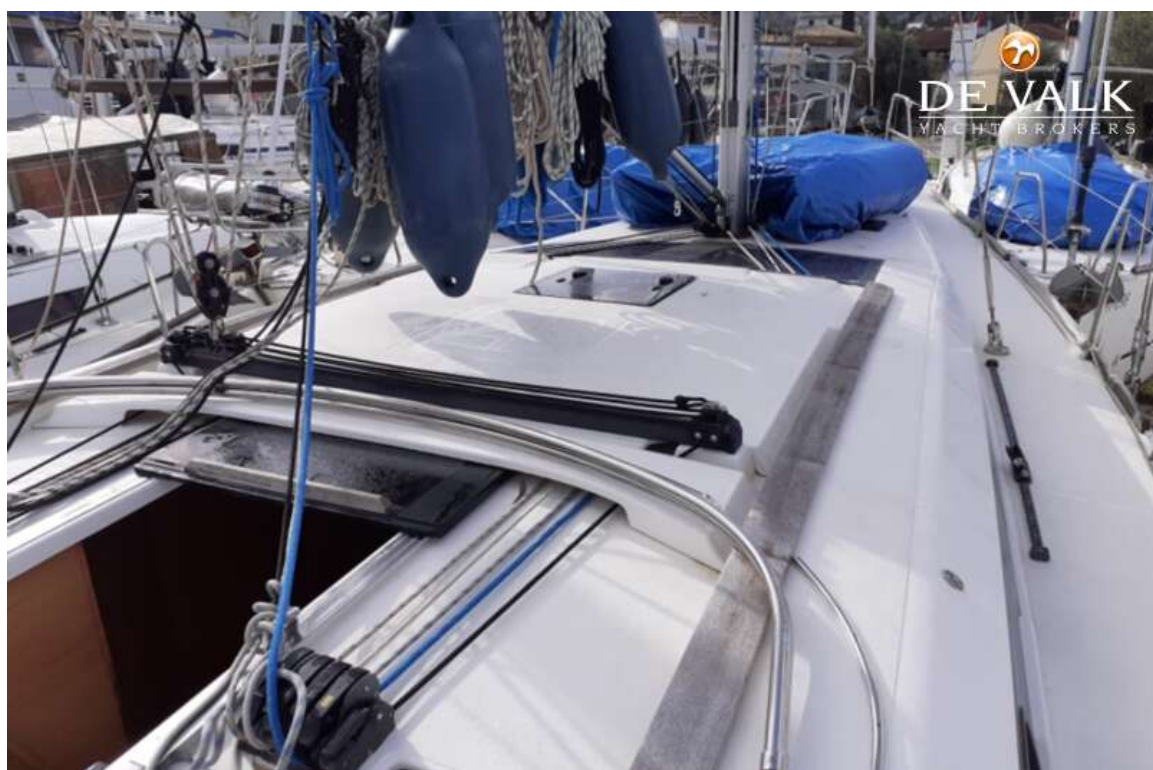




# DUFOUR 412 GRAND LARGE



# DUFOUR 412 GRAND LARGE

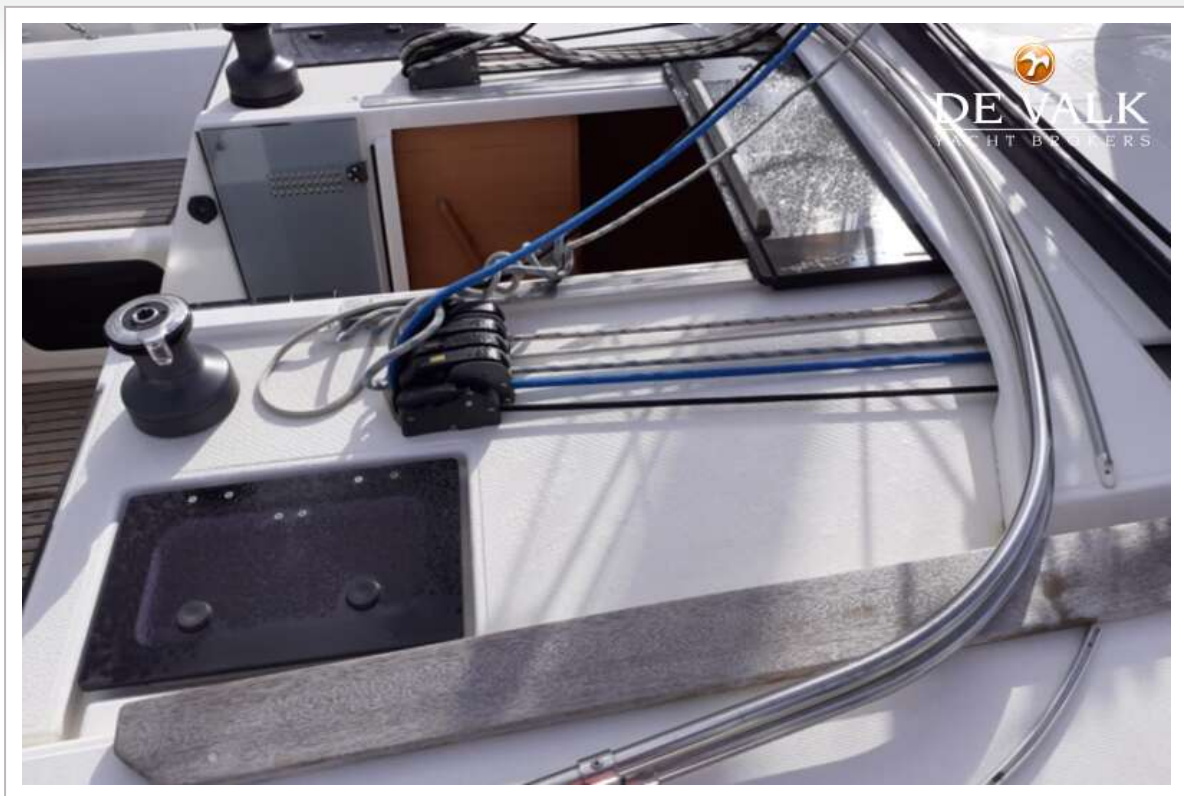




# DUFOUR 412 GRAND LARGE



# DUFOUR 412 GRAND LARGE





# DUFOUR 412 GRAND LARGE



# DUFOUR 412 GRAND LARGE





# DUFOUR 412 GRAND LARGE

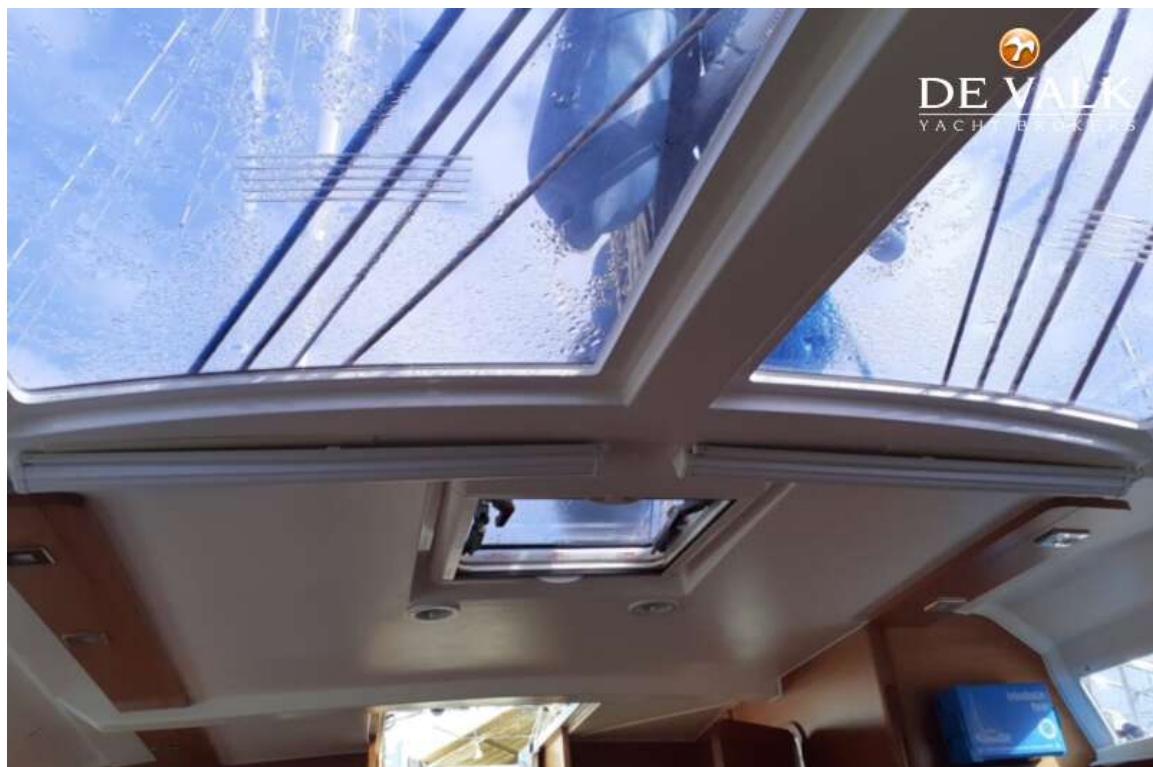


# DUFOUR 412 GRAND LARGE





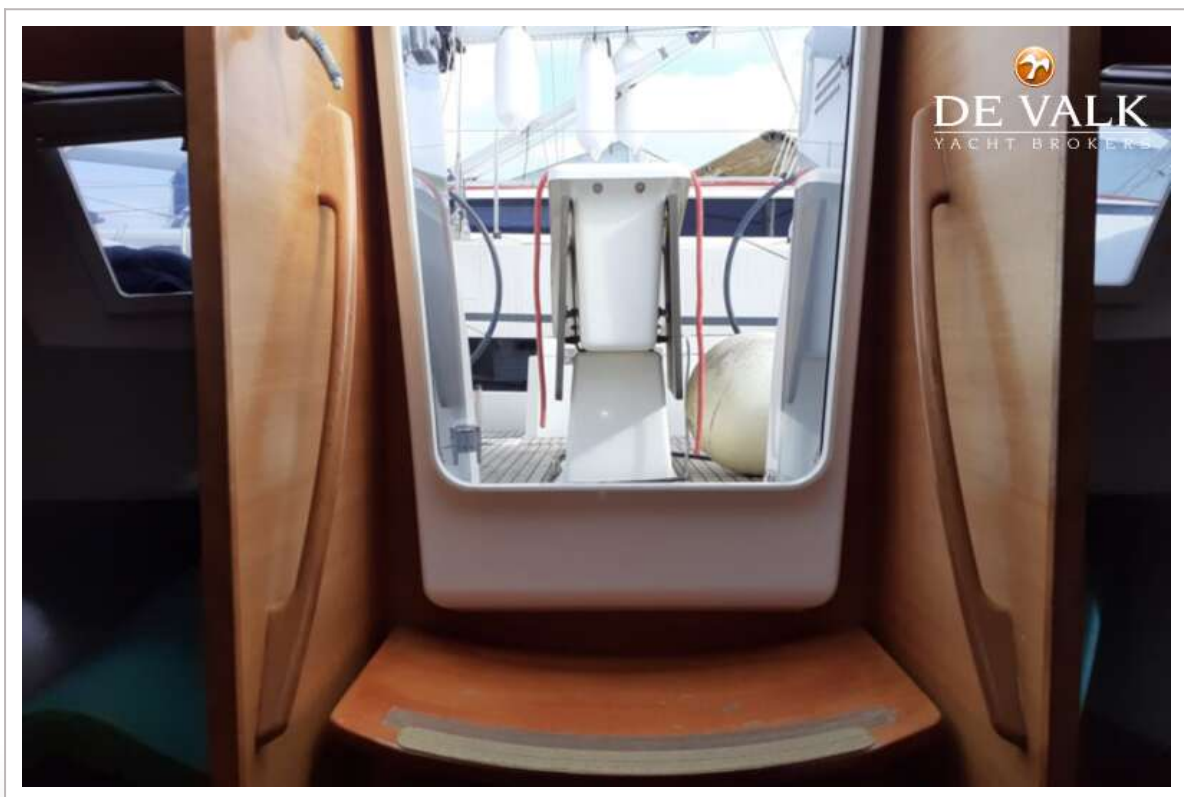
# DUFOUR 412 GRAND LARGE



# DUFOUR 412 GRAND LARGE

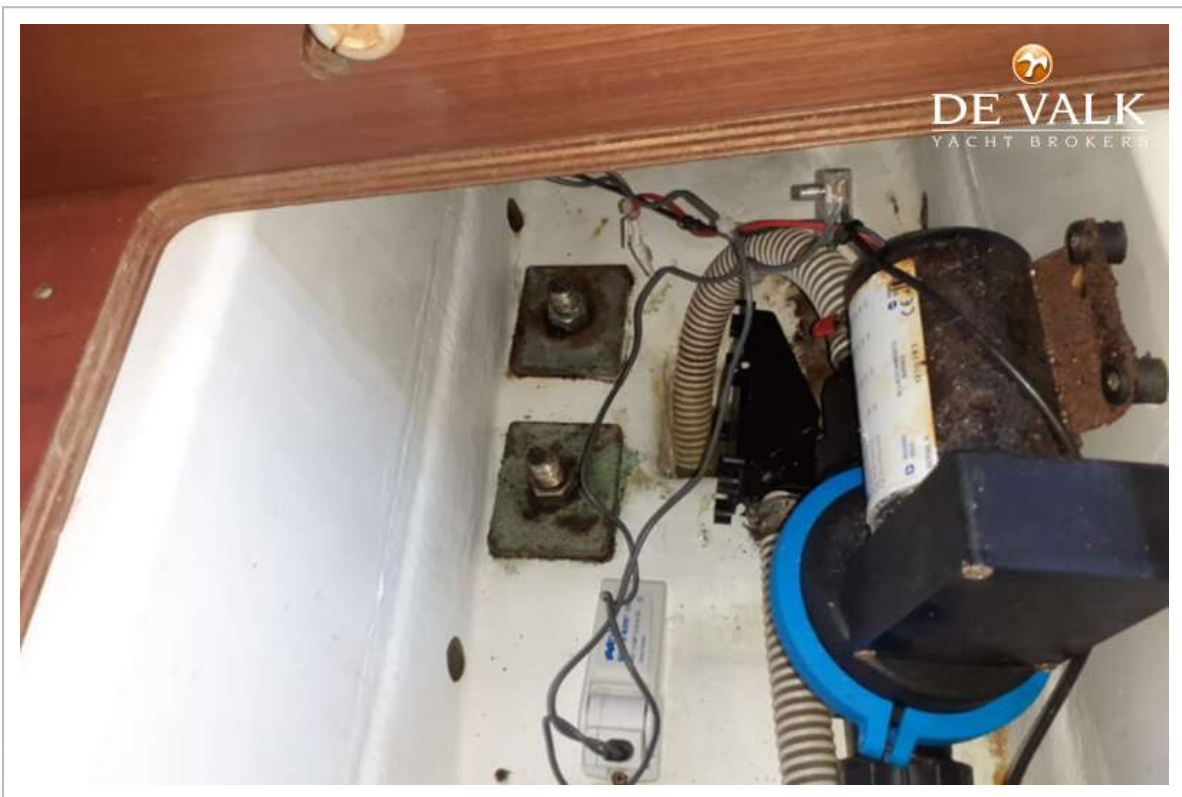


# DUFOUR 412 GRAND LARGE

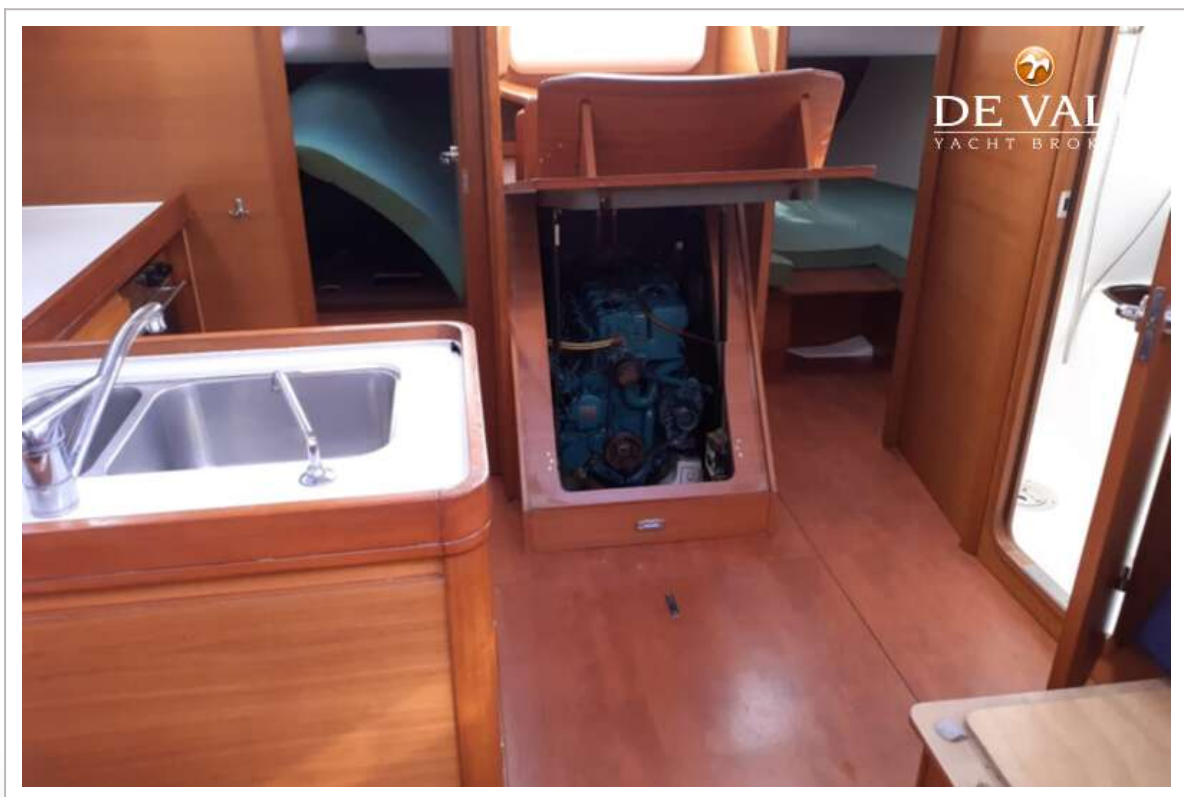




# DUFOUR 412 GRAND LARGE



# DUFOUR 412 GRAND LARGE



## DUFOUR 412 GRAND LARGE





## DUFOUR 412 GRAND LARGE



# DUFOUR 412 GRAND LARGE

