



VLET HOUSEBOAT 19M

VLET HOUSEBOAT 19M

BROKER'S COMMENTS

Neatly maintained to a houseboat converted Vlet called "Kamina". Her compact size makes this Vlet Houseboat 19M ideal for exploring the French canals and other smaller waterways. In 2000 "Kamina" has had a cosmetic and technical refit where also the underwater hull has been doubled with 6mm. This Vlet Houseboat 19M is because of her spacious accommodation very suitable as a sailing houseboat.

Jochem Heijermans

SPECIFICATIONS

Dimensions	18.86 x 4.40 x 1.15 (m)	Builder	Zaadnordijk Yachtbuilders bV
Built	1926	Cabins	2
Material	Steel	Berths	4
Engine(s)	1 x Detroit 7063/7000 diesel	Hp/Kw	160.00 (hp), 117.76 (kw)
Asking price	sold (VAT)	Lying	elsewhere / Not at sales office

CONTACT

Sales office	De Valk Belgium	Telephone	+32 586 80 218
Address	1401 PT Nieuwpoort BE	E-mail	belgium@devalk.nl

DISCLAIMER

These particulars are given in good faith as supplied but cannot be guaranteed.



VLET HOUSEBOAT 19M

GENERAL

Model	VLET HOUSEBOAT 19M
Type	motor yacht
LOA (m)	18,86
Beam (m)	4,40
Draft (m)	1,15
Air draft (m)	3,10
Headroom (m)	2,00
Year built	1926
Builder	Zaadnordijk Yachtbuilders bV
Country	The Netherlands
Displacement (t)	30
Hull material	steel
Hull colour	grey
Hull thickness (mm)	8mm
Hull shape	flat bottom
Superstructure material	steel
Rubbing strake	steel
Deck material	steel
Deck finish	paint
Superstructure deck finish	paint
Cockpit deck finish	paint
Antifouling (year)	2022
Window frame	yes
Window material	tempered glass
Deckhatch	yes
Fuel tank (litre)	steel 2x 750
Fuel tank 2 (litre)	steel 500
Freshwater tank (litre)	steel 2000
Wheel steering	electric + emergency steer
More info on hull	Underwater hull in 2000 6mm doubled



VLET HOUSEBOAT 19M

ACCOMMODATION

Cabins	2
Berths	4
Floor	carpet
Saloon	yes
Headroom saloon (m)	2
Heating	central heating Kabola
Dinette	yes
Galley	yes
Countertop	wood
Sink	yes
Cooker	calor gas 4 burner
Oven	yes
Extractor	yes
Fridge	yes
Hot water system	220V 1x 80l + 1x 20l
Water pressure system	electrical
Owners cabin	double bed
Wardrobe	hanging and shelves
Bathroom	shared
Toilet	shared
Toilet system	electric
Wash basin	in the bathroom
Shower	shared
Bath tub	shared
Guest cabin 1	bunk bed
Wardrobe	hanging and shelves
Washing machine/dryer combi	yes

MACHINERY

No of engines	1
---------------	---



VLET HOUSEBOAT 19M

Make	Detroit
Type	7063/7000
HP	160
kW	117.76
Fuel	diesel
Year installed	1997
Engine cooling system	hopper cooling
Drive	shaft
Engine controls	bowden cable
Gearbox	hydraulic
Gearbox	yes
Exhaust	dry
Shaft lubrication	grease
Electrical installation	24V/220Ah
Generator	dry exhaust Lister 11Kva
Batteries	05/2023
Start battery	05/2023
Service battery	05/2023
Battery charger	2x Victron 24V/50Ah
Inverter	3000W
Shorepower	with cable

NAVIGATION

Rudder angle indicator	yes
Navigation lights	yes

EQUIPMENT

Fixed windscreen	yes
Bimini	yes
Anchor	yes
Windlass	manual



VLET HOUSEBOAT 19M

Davits	steel
Davits controls	manual
Grab rail (superstructure)	steel
Horn	electric
Mooring lines	yes
TV receiver	yes
Satellite	yes
Radio	yes



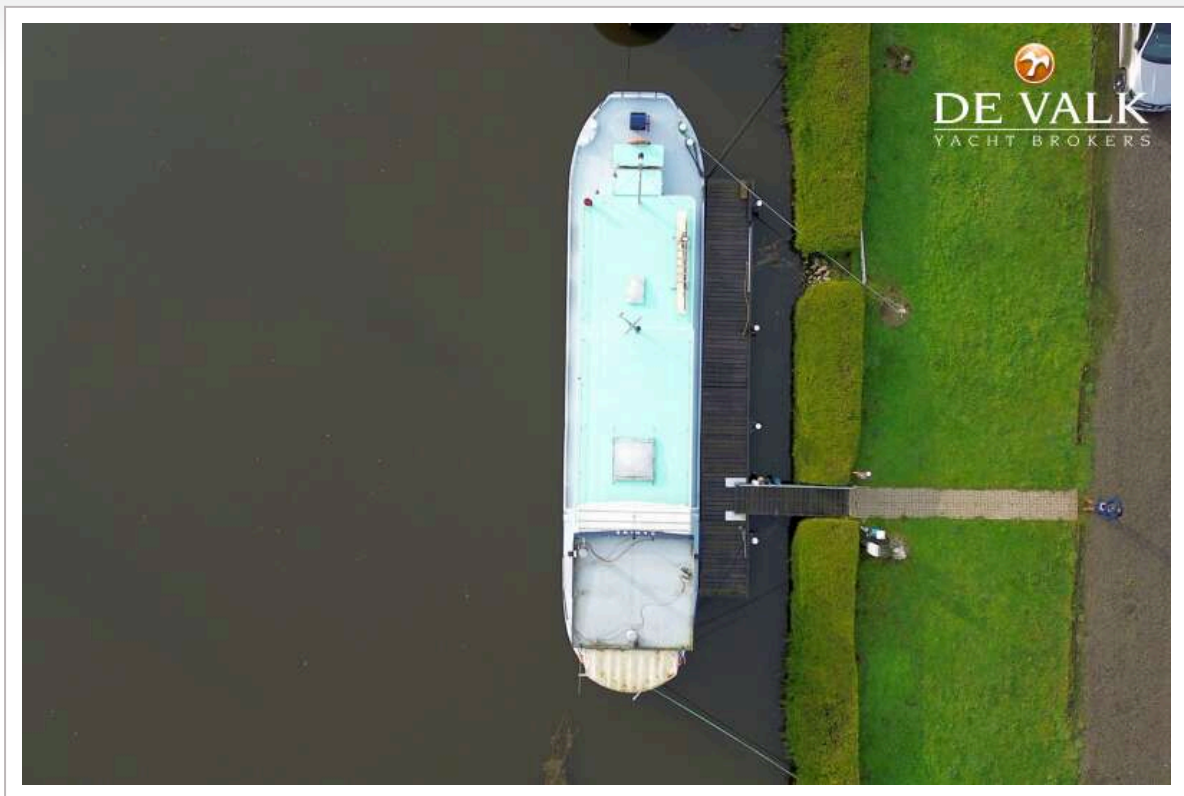
VLET HOUSEBOAT 19M



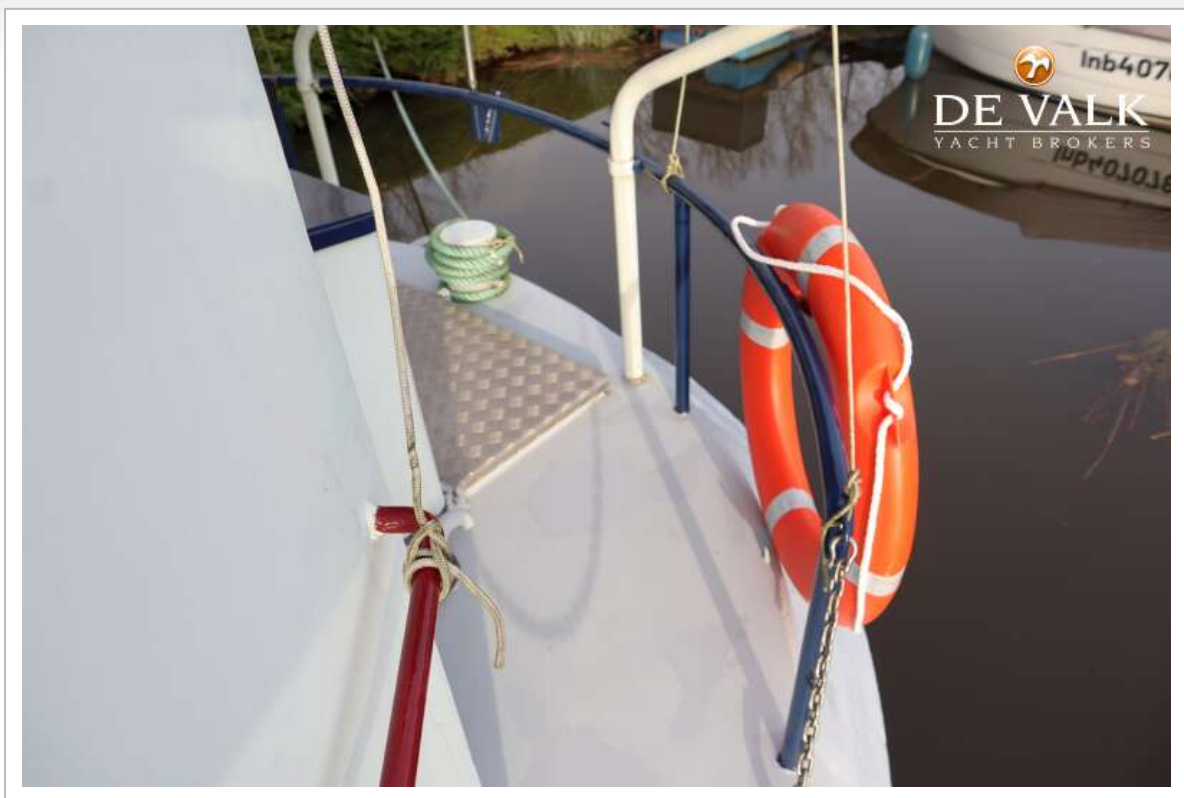
VLET HOUSEBOAT 19M



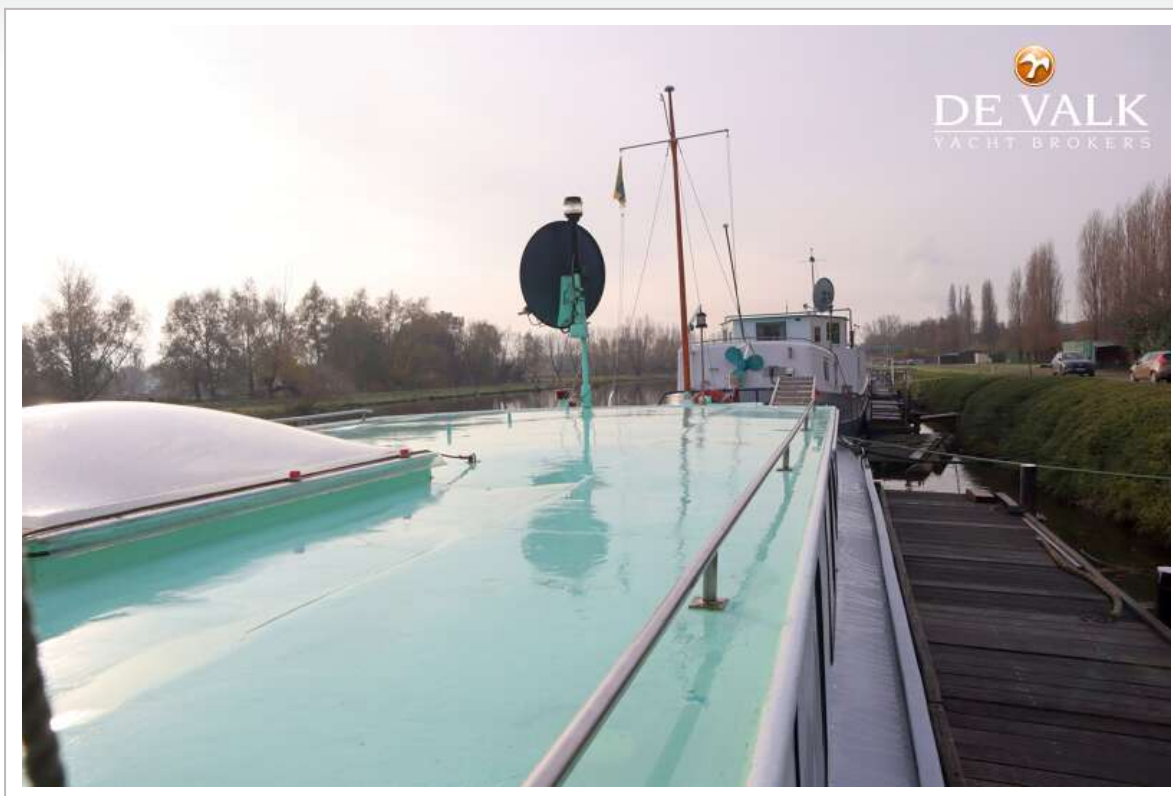
VLET HOUSEBOAT 19M



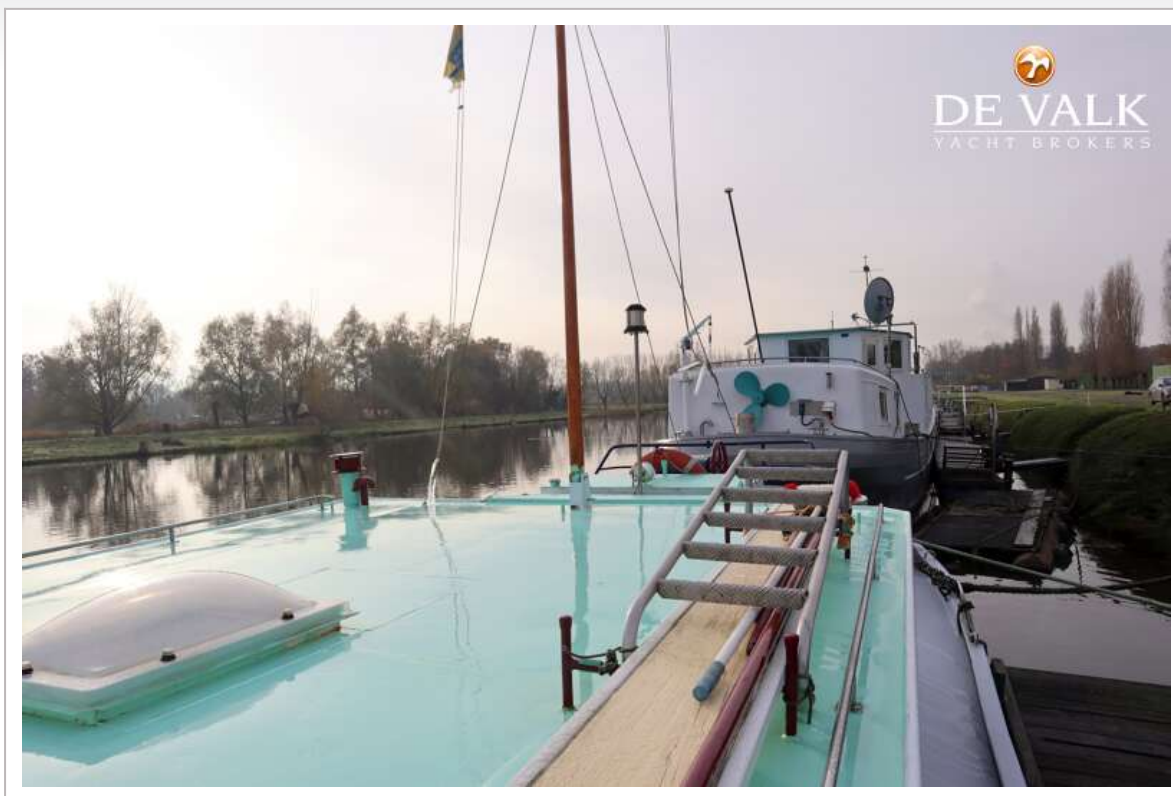
VLET HOUSEBOAT 19M



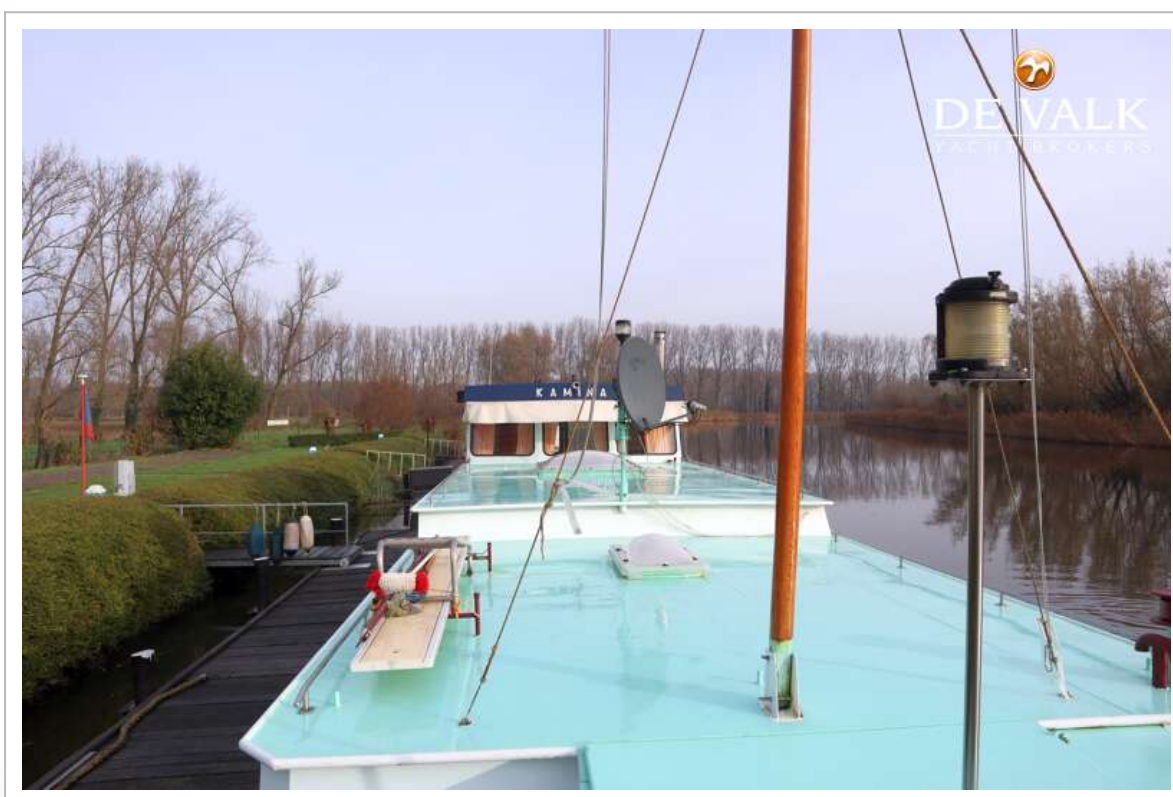
VLET HOUSEBOAT 19M



VLET HOUSEBOAT 19M



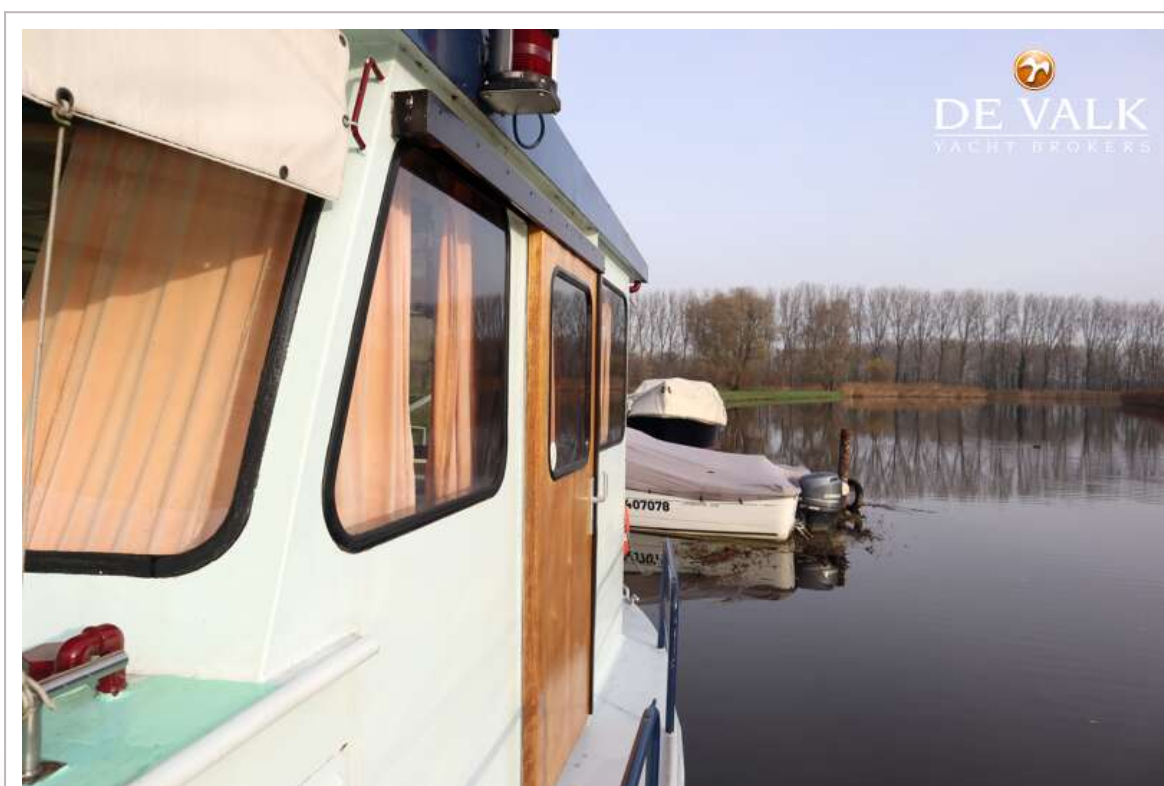
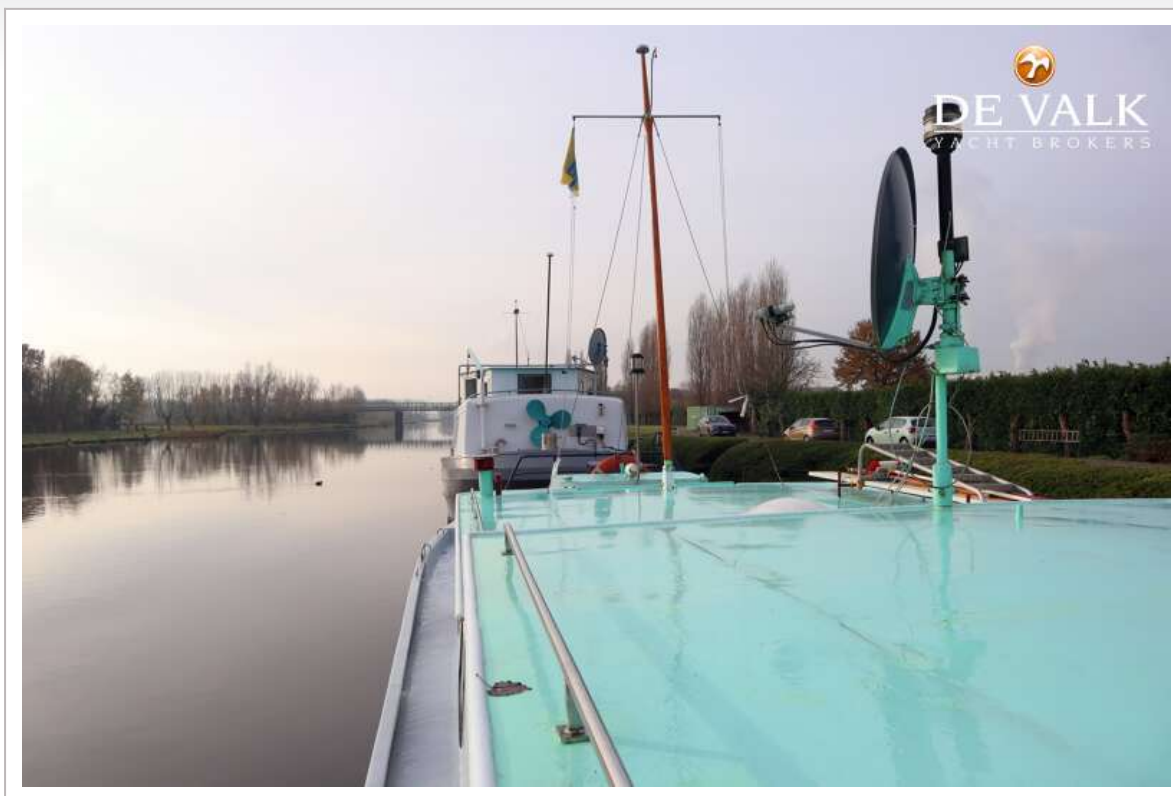
VLET HOUSEBOAT 19M



VLET HOUSEBOAT 19M



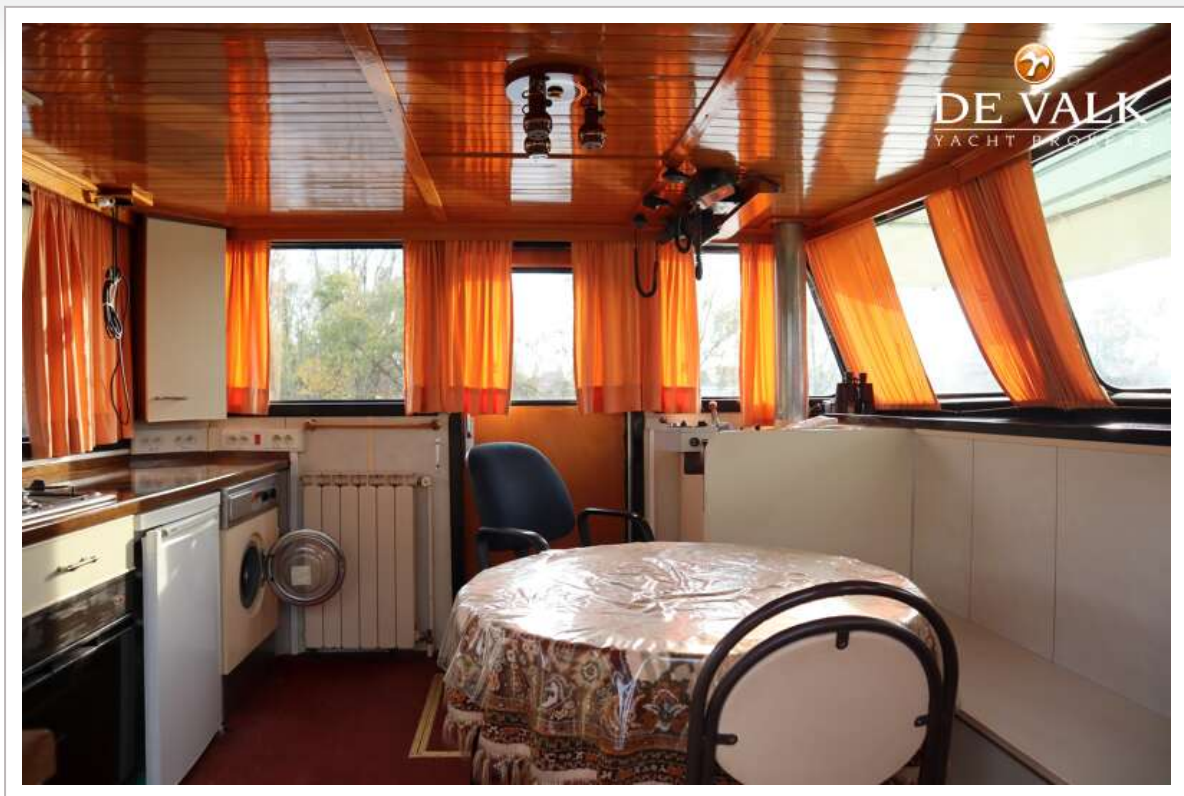
VLET HOUSEBOAT 19M



VLET HOUSEBOAT 19M



VLET HOUSEBOAT 19M



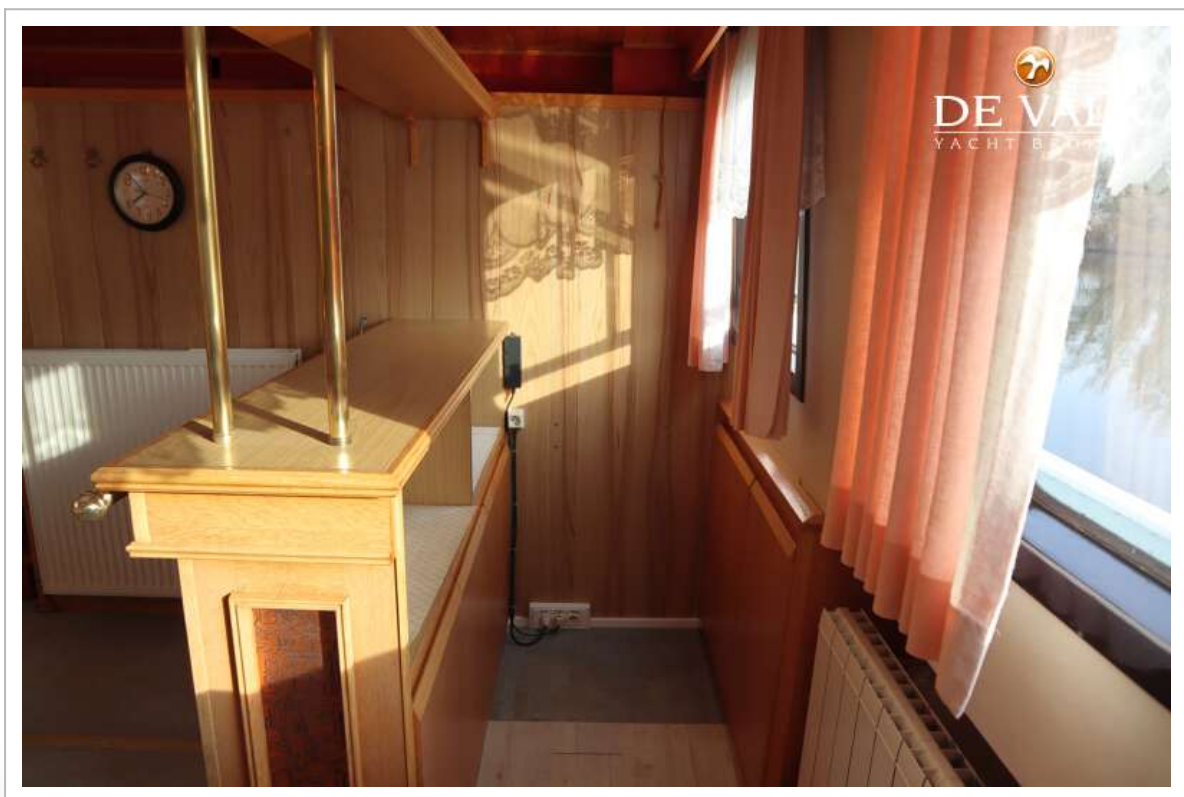
VLET HOUSEBOAT 19M



VLET HOUSEBOAT 19M



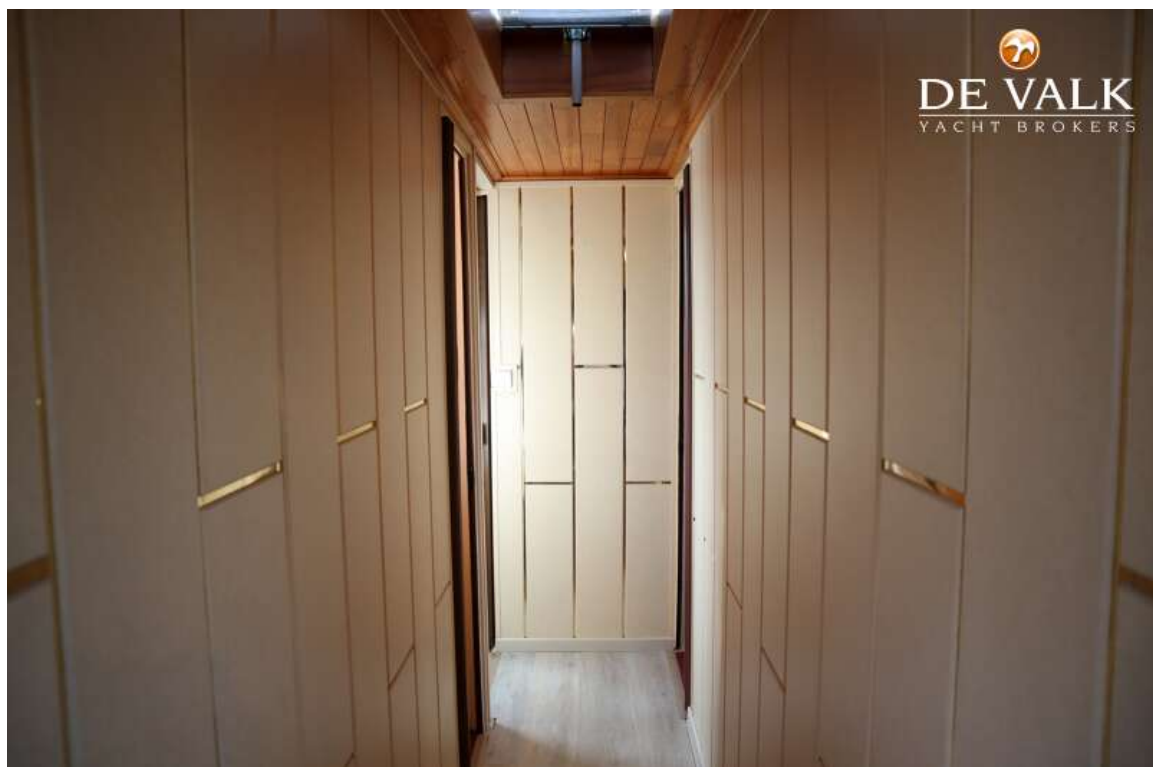
VLET HOUSEBOAT 19M



VLET HOUSEBOAT 19M



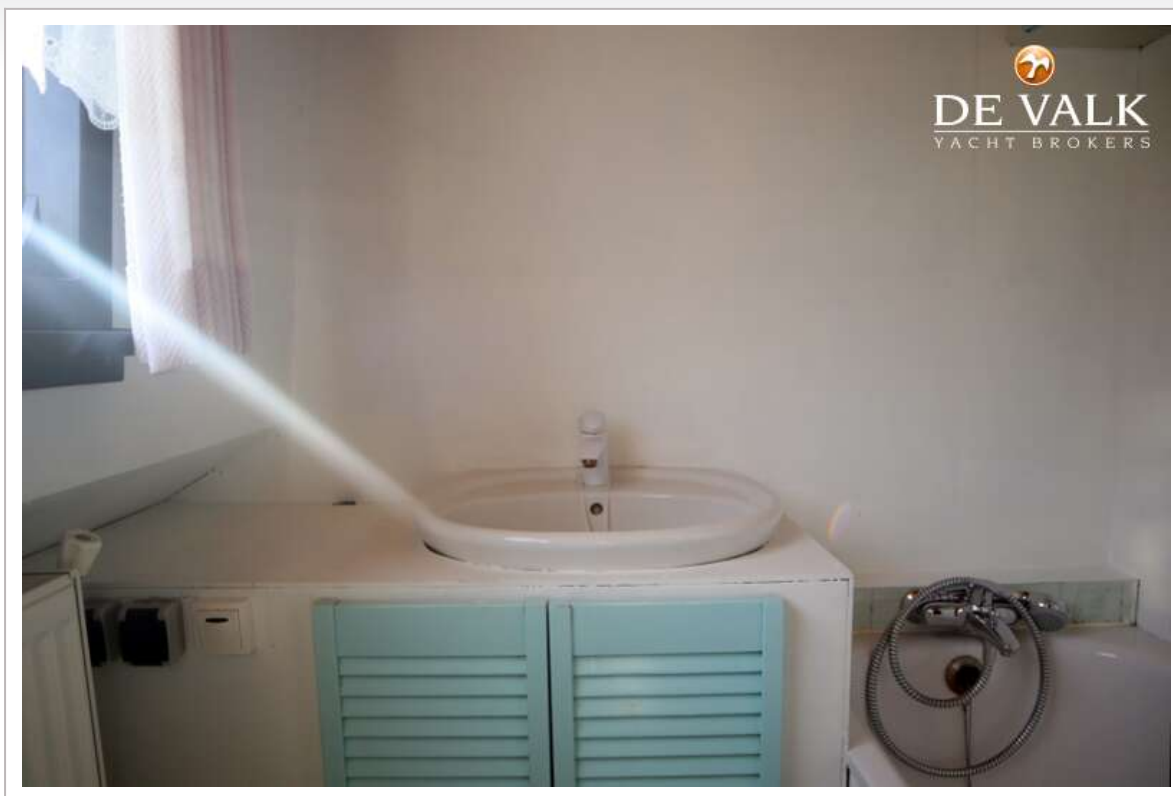
VLET HOUSEBOAT 19M



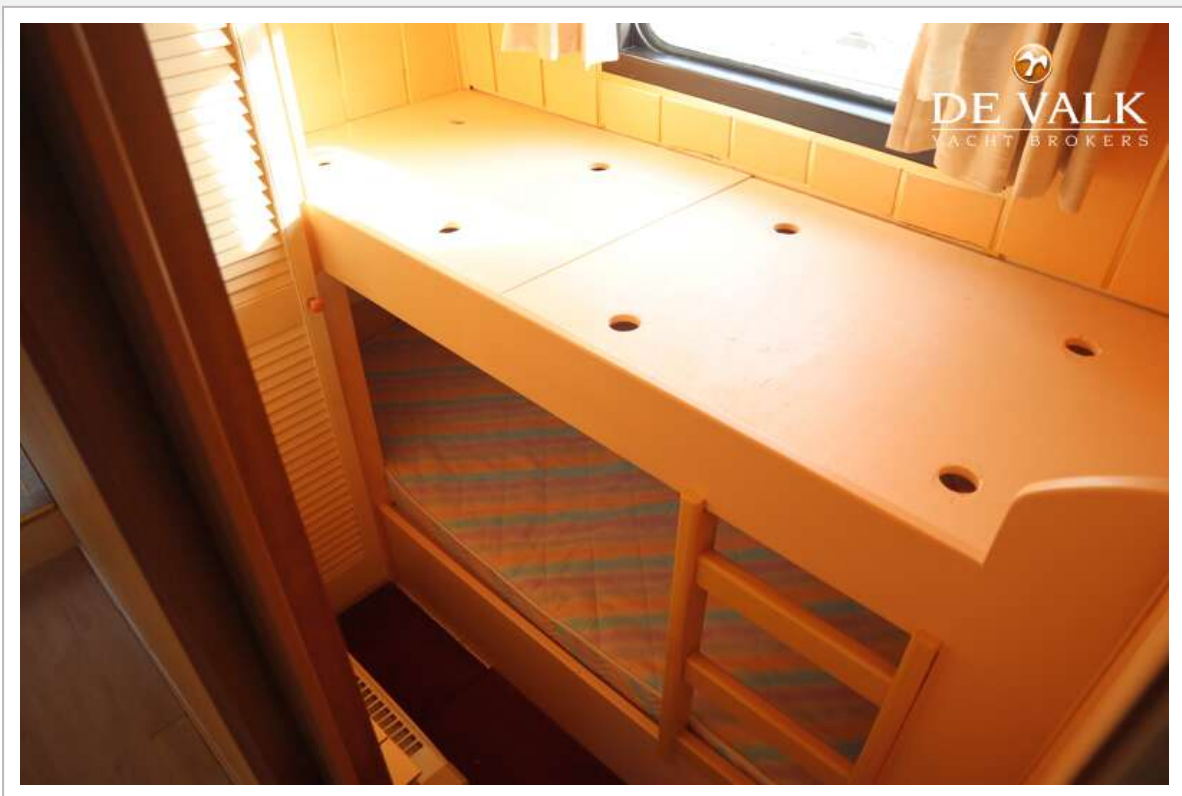
VLET HOUSEBOAT 19M



VLET HOUSEBOAT 19M



VLET HOUSEBOAT 19M



VLET HOUSEBOAT 19M



VLET HOUSEBOAT 19M

