



DE VALK  
YACHT BROKERS



## BLOEMSMA SEAFLOWER 38



DE VALK  
YACHT BROKERS

# BLOEMSMA SEAFLOWER 38

## BROKER'S COMMENTS

This Bloemsma Kotter is a good example of a sturdy, solid and very well maintained ship. With a very reliable John Deere diesel engine (from 2004), a low minimal vertical clearance and a comfortable interior, she is ready for long journeys on board. This Bloemsma Kotters offers a spacious saloon, inside and outside steering, a big after cabin and a clean engine room. Please contact our sales office in Sint Annaland to make an appointment on board this beautiful classic.

*Joris van de Rijt*

## SPECIFICATIONS

<b>Dimensions</b>	11.50 x 3.60 x 1.55 (m)	<b>Builder</b>	Bloemsma Makkum
<b>Built</b>	1978	<b>Cabins</b>	2
<b>Material</b>	Steel	<b>Berths</b>	4
<b>Engine(s)</b>	1 x John Deere 6068DF150 diesel	<b>Hp/Kw</b>	125.00 (hp), 92.00 (kw)
<b>Asking price</b>	sold (VAT )	<b>Lying</b>	elsewhere / Not at sales office

## CONTACT

<b>Sales office</b>	De Valk Sint Annaland B.V.	<b>Telephone</b>	+31 (0)166 601 000
<b>Address</b>	Koelhuisweg 4 4697 RM Sint Annaland NL	<b>E-mail</b>	sintannaland@devalk.nl

## DISCLAIMER

These particulars are given in good faith as supplied but cannot be guaranteed.



## GENERAL

Model	BLOEMSMA SEAFLOWER 38
Type	motor yacht
LOA (m)	11,50
Beam (m)	3,60
Draft (m)	1,55
Air draft (m)	7,50
Air draft min (m)	2,60
Headroom (m)	1,95
Year built	1978
Builder	Bloemsma Makkum
Country	The Netherlands
Displacement (t)	18
Hull material	steel
Hull colour	blue Painted in 2018 (International 1-component)
Hull shape	round-bilged Gejoggeld (jogged)
Keel type	long keel
Bilge keels	yes
Superstructure material	steel Sandblasted in 2018 and painted (1 component)
Rubbing strake	stainless steel
Deck material	steel
Deck finish	non-skid paint Sandblasted in 2018 - 2 component painted (last time in 2023)
Superstructure deck finish	paint Sandblasted in 2018 and painted (1 component)
Cockpit deck finish	non-skid paint Sandblasted in 2018 - 2 component painted (last time in 2023)
Antifouling (year)	October 2023: 1 x Primocon & 2 x Epifanes Copper Cruise in Red
Window frame	aluminium
Window material	tempered glass
Deckhatch	yes
Insulation	glasswool



<b>Radar arch</b>	collapsible
<b>Mast can be lowered</b>	manual
<b>Steadying sail with mast</b>	Can be lowered with winch
<b>Fuel tank (litre)</b>	steel 2 x 600 (cleaned in 2017)
<b>Level indicator (fuel tank)</b>	yes
<b>Freshwater tank (litre)</b>	steel 1200 (cleaned + new coating in 2017 & 2023)
<b>Level indicator (freshwater)</b>	yes
<b>Wheel steering</b>	hydraulic
<b>Outside helm position</b>	hydraulic
<b>More info on hull</b>	Underwater body sandblasted in 2010 and painted (1x Sigma Cover 280, 2x Sigma Cover 805 & 1x Sigma Cover 525). Then every 2nd year new layor of Primocon & antifouling
<b>More info on paintwork</b>	2023: upper part hull partly painted (International 1-component)

## ACCOMMODATION

<b>Cabins</b>	2
<b>Berths</b>	4
<b>Interior</b>	teak
<b>Floor</b>	carpet (new 2018)
<b>Aft deck</b>	yes
<b>Deck saloon</b>	yes
<b>Saloon</b>	yes
<b>Headroom saloon (m)</b>	1,95
<b>Heating</b>	central heating Webasto Thermo 90 (2006)
<b>Dinette</b>	yes
<b>Galley</b>	yes
<b>Countertop</b>	stainless steel
<b>Sink</b>	stainless steel
<b>Cooker</b>	calor gas 3 burner (1 burner is disconnected for safety reasons)
<b>Oven</b>	Tristar
<b>Fridge</b>	Electrolux with freezer compartment
<b>Hot water system</b>	220V + engine Rheinstrom boiler 30ltr/800W (2006)



# BLOEMSMA SEAFLOWER 38

Water pressure system	electrical
Owners cabin	double bed
Bed length (m)	2,10 x 1,20
Wardrobe	hanging and shelves
Bathroom	shared
Toilet	shared
Toilet system	manual RM-69 (2007) pump overhaul 2022
Wash basin	in the bathroom
Shower	shared
Guest cabin 1	v-bed Open cabin in front
Bed length (m)	1,80

## MACHINERY

No of engines	1
Make	John Deere
Type	6068DF150
HP	125
kW	92
Fuel	diesel
Year installed	2004
Maximum speed (kn)	7
Cruising speed (kn)	5
Engine hours	3100
Engine cooling system	freshwater heat exchanger Impeller pump replaced in 2019
Drive	shaft
Engine controls	bowden cable
Gearbox	hydraulic PRM
Bowthruster	electric
Propeller type	fixed
Propeller blades	3
Propeller shaft material	stainless steel (new bearings, seals and oil in 2017)



Shaft lubrication	oilbath
Manual bilge pump	yes
Electric bilge pump	yes
Electrical installation	24/220
Batteries	4 x 125 Ah
Battery charger	Telwin Touring 18
Inverter	Victron 24-220 1600W (2006)
Solar panel	(2009)
Shorepower	with cable With Victron galvanic isolator

## NAVIGATION

Compass	VDO
Depth sounder	Seafarer 4
VHF	ICOM IC-M505 with outside connection (2011)
Rudder angle indicator	yes
Radar	Raytheon R20/21 (1996)
Navigation lights	yes
Searchlight	yes

## EQUIPMENT

Fixed windscreen	yes
Boarding ladder	Plastic
Anchor	Pool
Anchor chain	yes
Windlass	electrical
Deck wash	yes
Sea railing	Upper steel part after deck replaced in 2019
Grab rail (superstructure)	stainless steel
Railing side opening gates	2 x
Lifebuoy	2 x
Horn	electric



Radar reflector	yes
Fenders	yes
Mooring lines	yes
Radio-cd player	yes
Speakers in salon	yes
Clock - barometer	yes
Fire extinguisher	yes
Extra info	Window covers





# BLOEMSMA SEAFLOWER 38





# BLOEMSMA SEAFLOWER 38



# BLOEMSMA SEAFLOWER 38





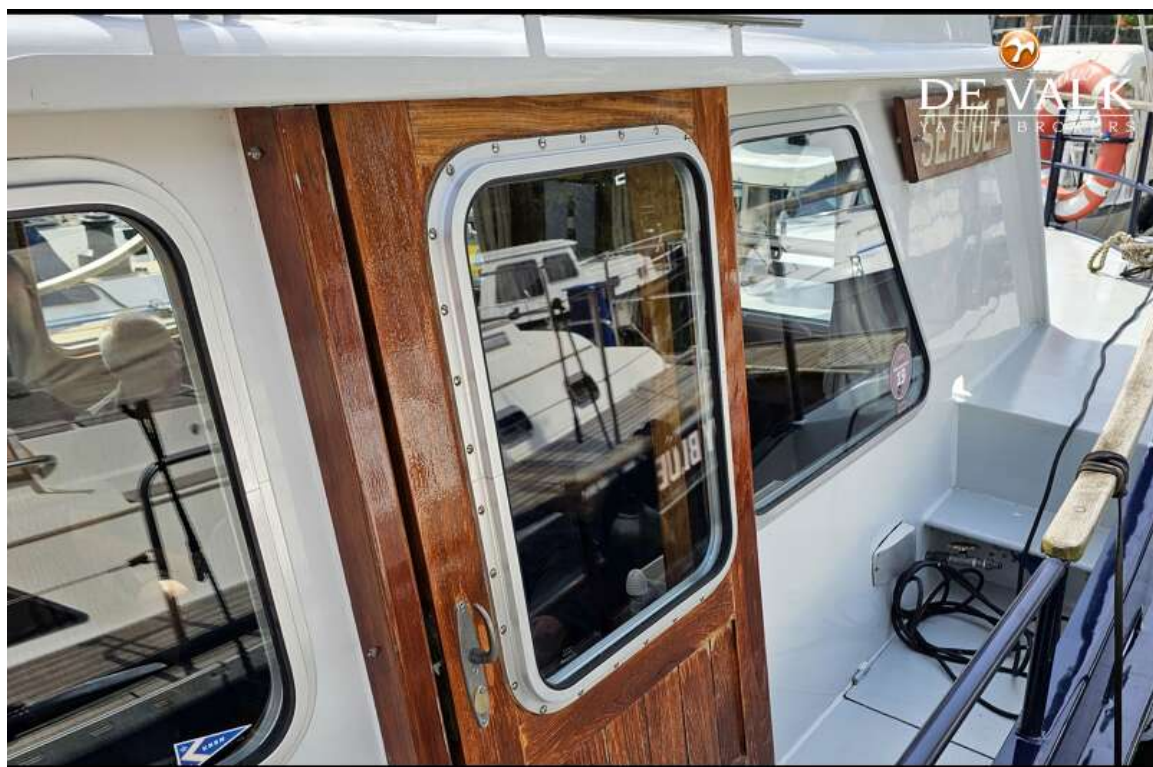
# BLOEMSMA SEAFLOWER 38



## BLOEMSMA SEAFLOWER 38



















## BLOEMSMA SEAFLOWER 38



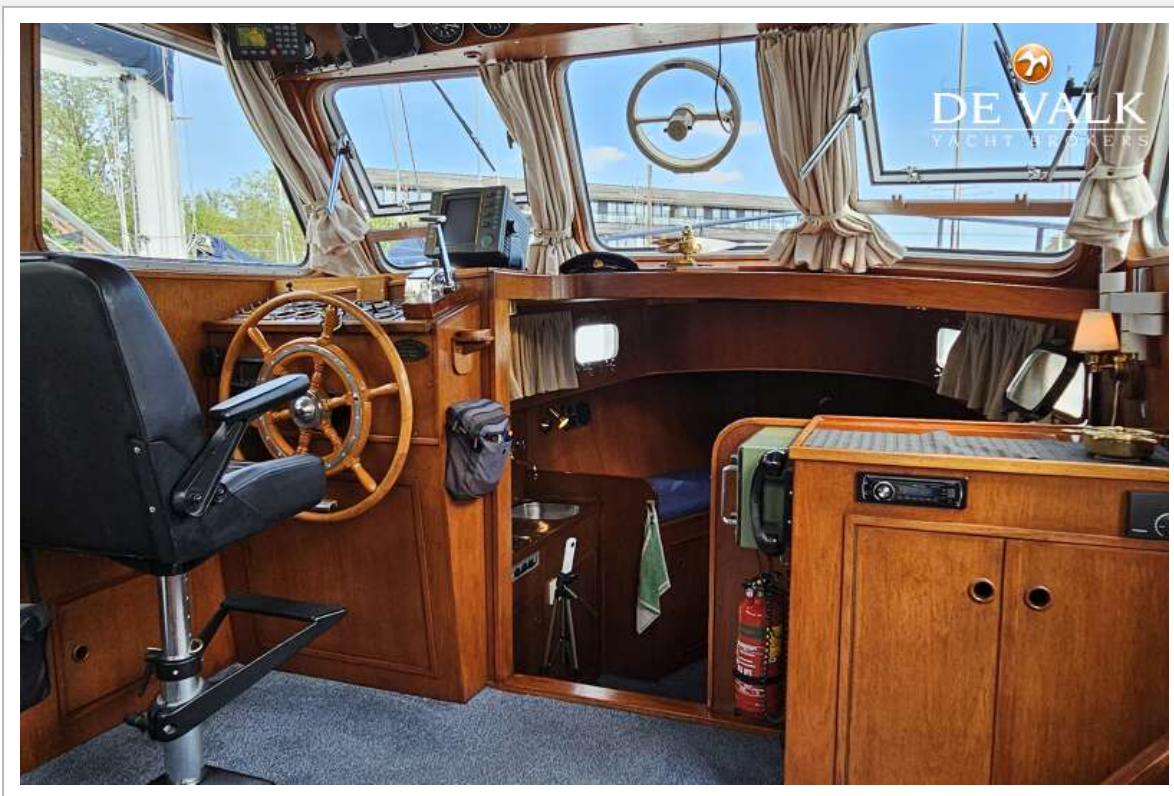


## BLOEMSMA SEAFLOWER 38



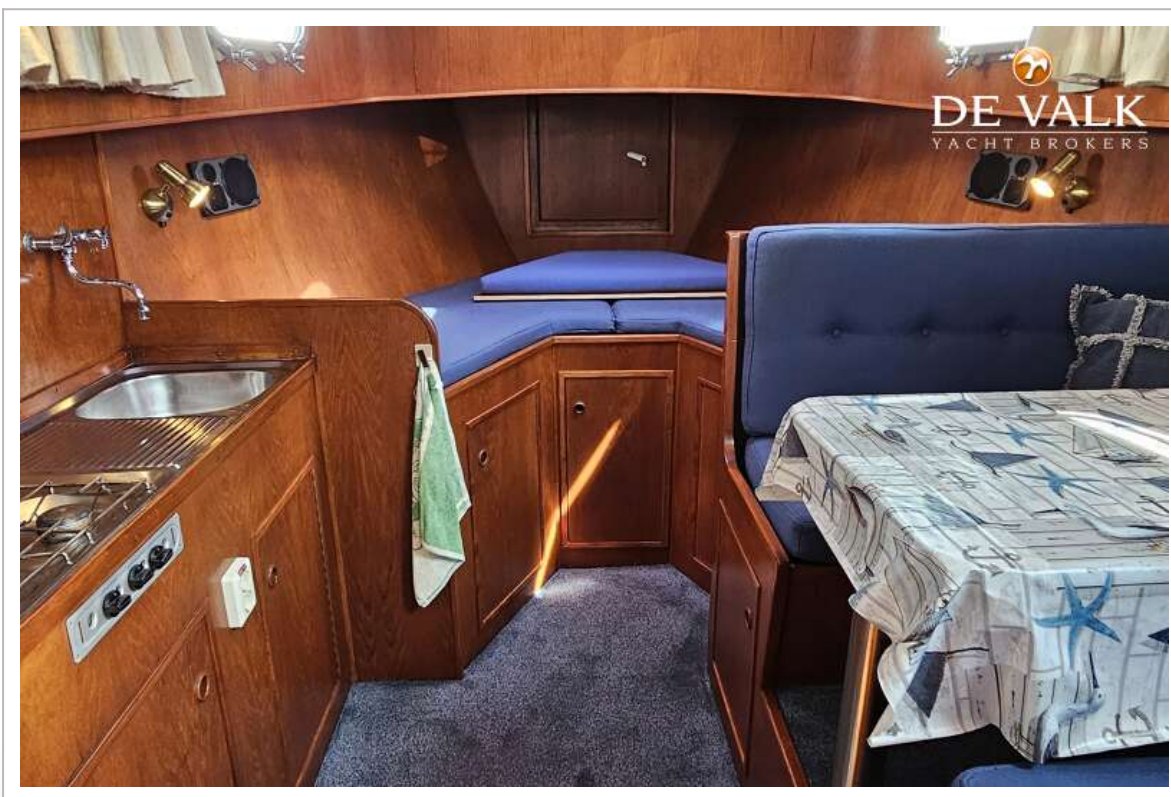


## BLOEMSMA SEAFLOWER 38

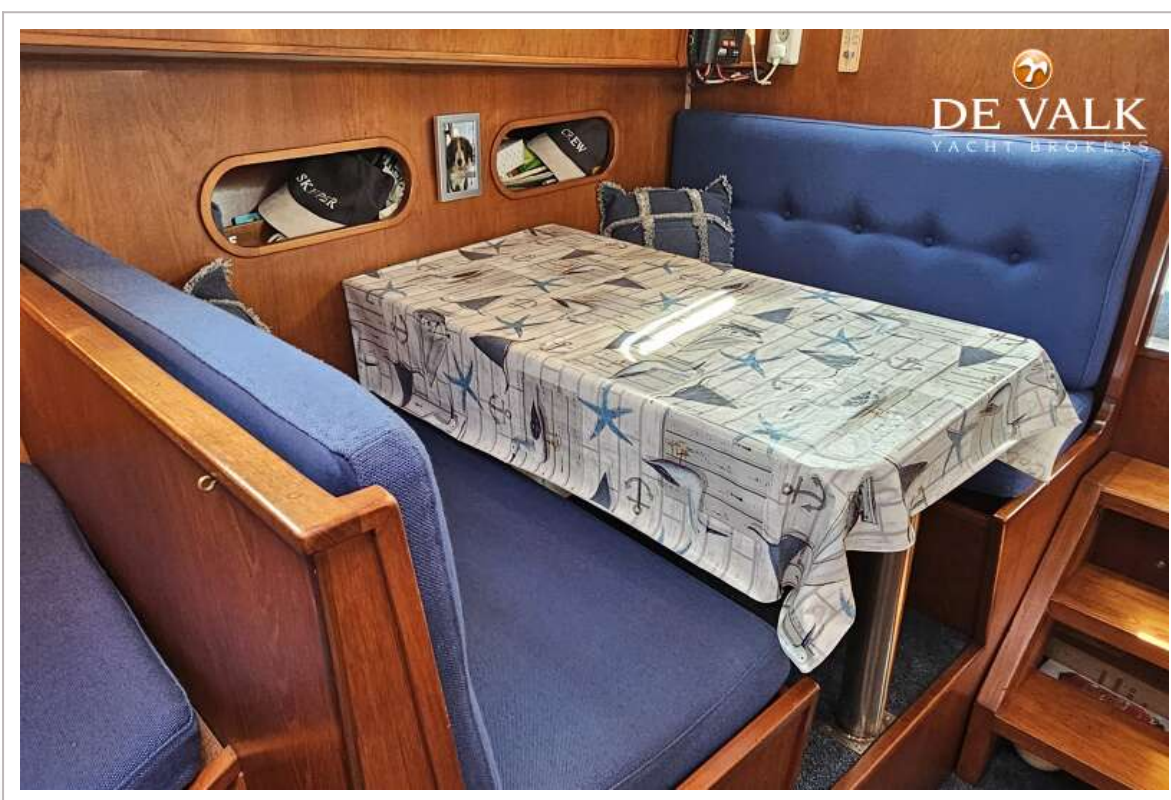




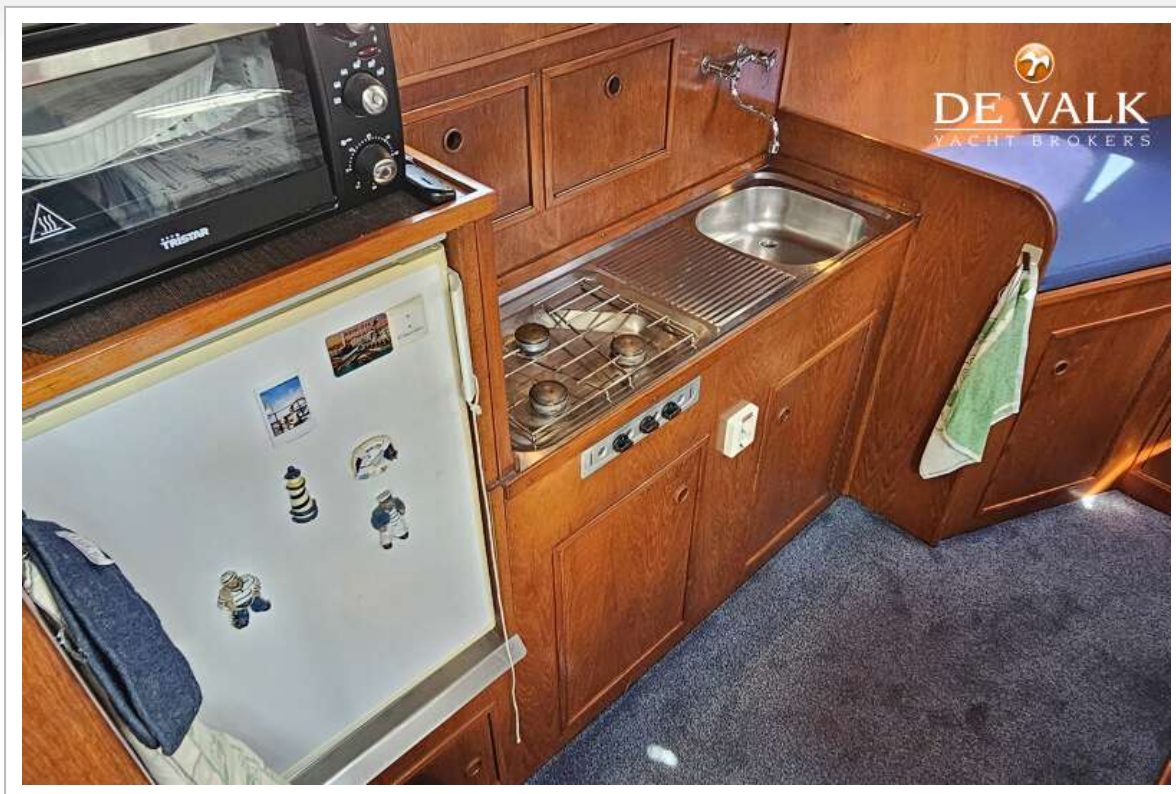
# BLOEMSMA SEAFLOWER 38



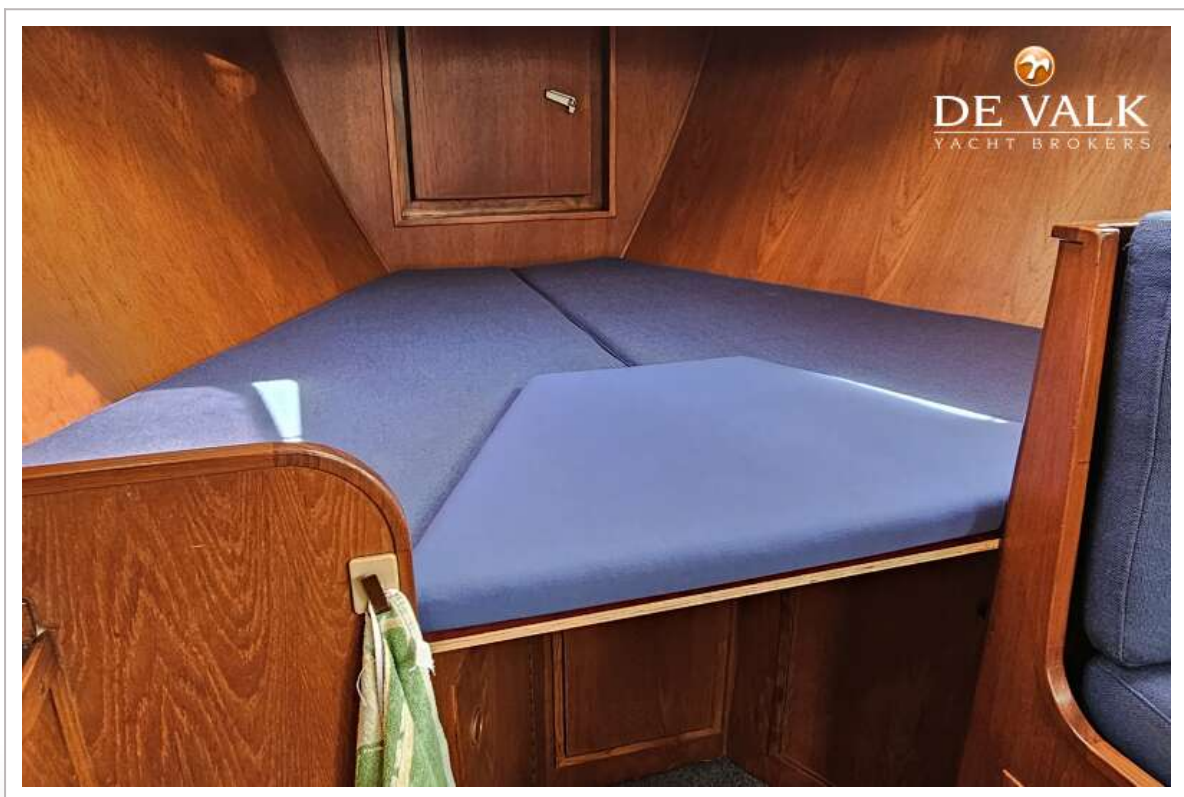
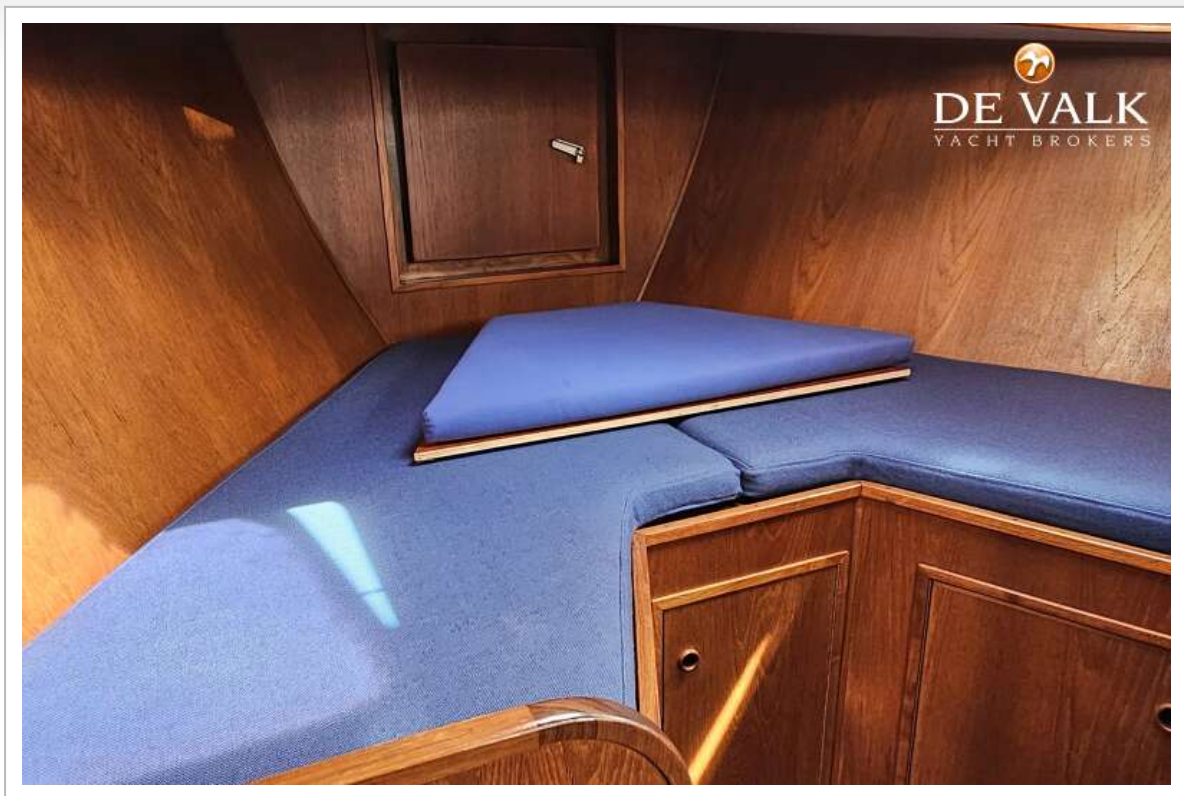


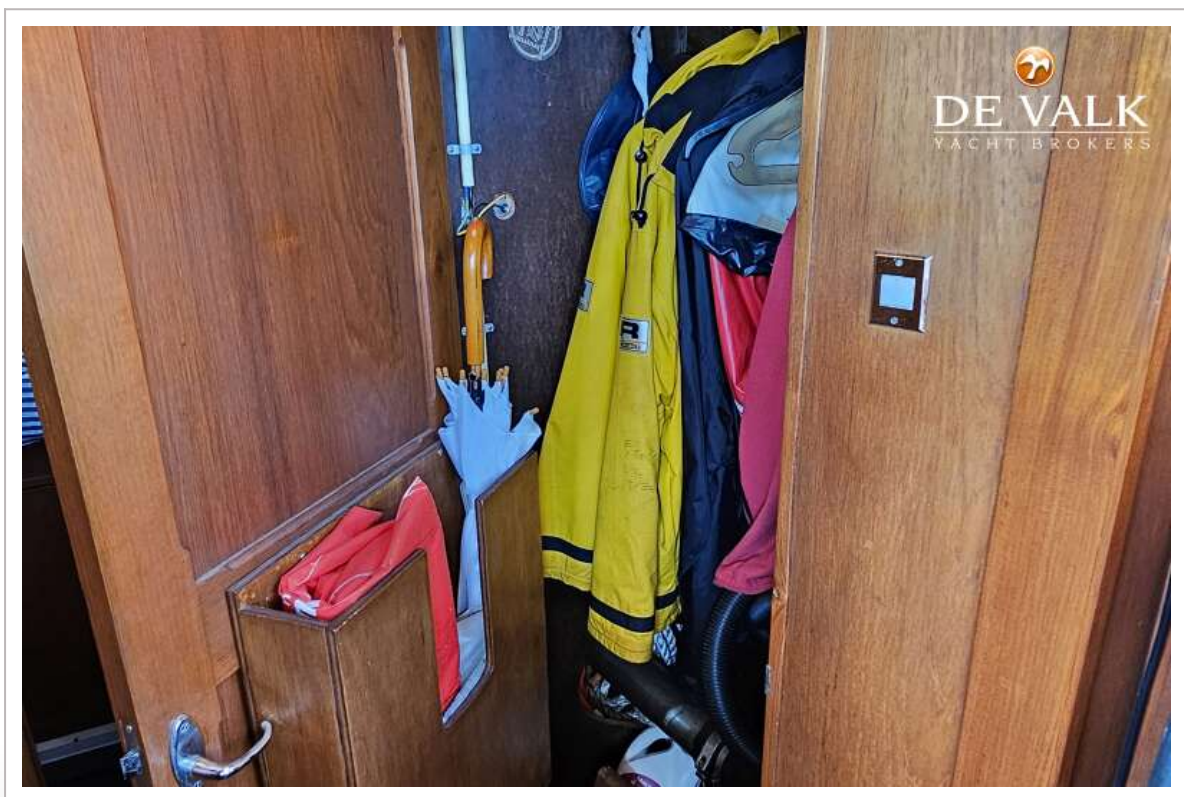
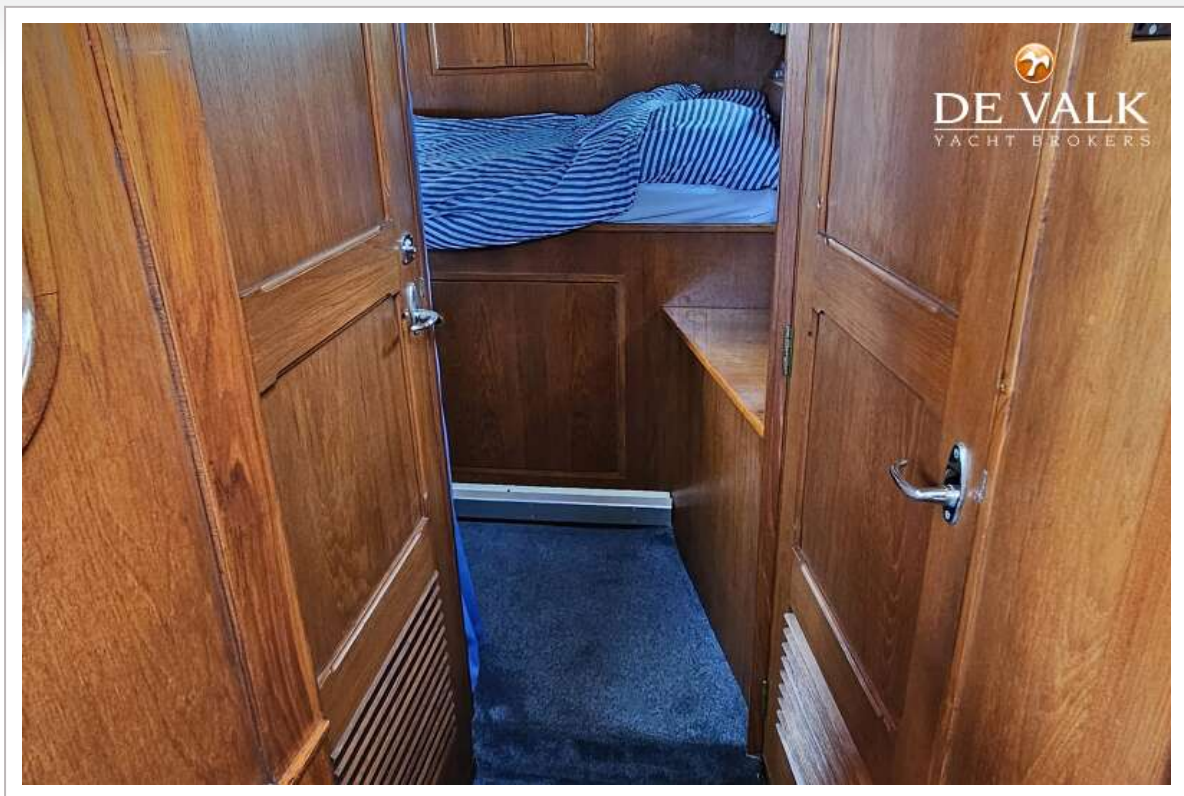




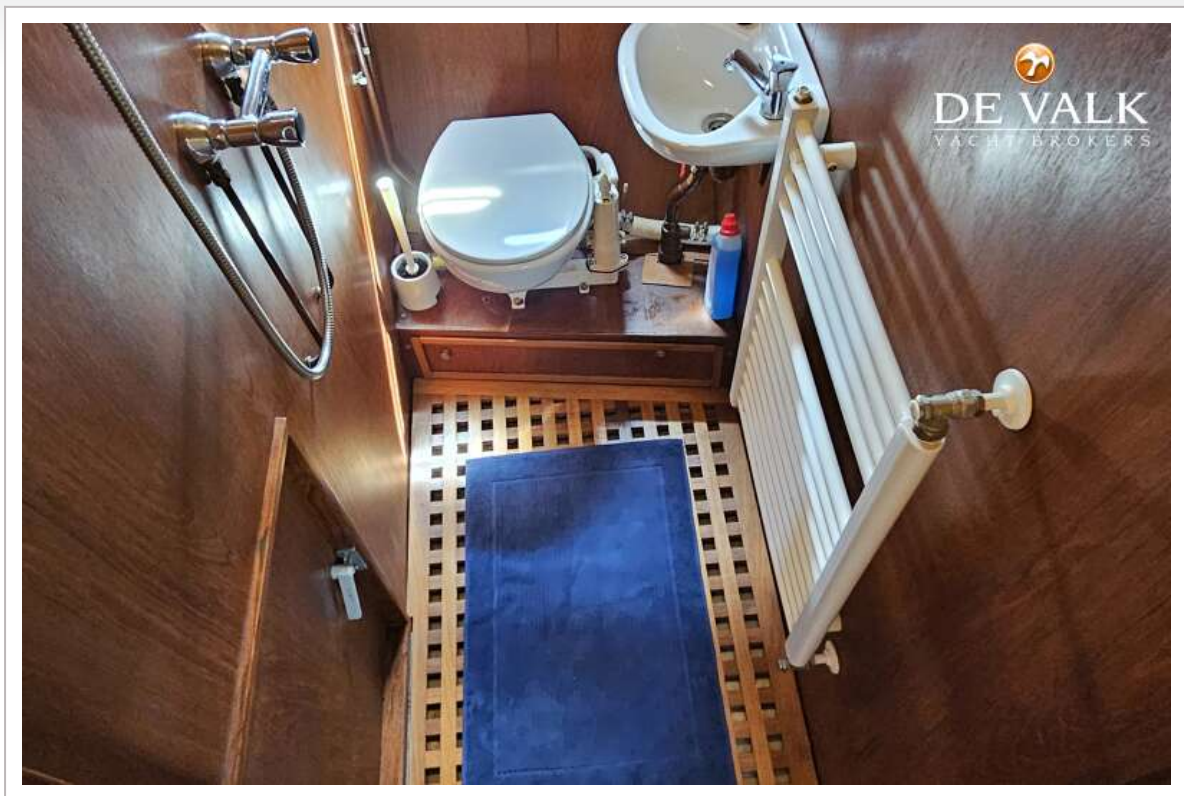














## BLOEMSMA SEAFLOWER 38

