



BAVARIA CRUISER 36



BAVARIA CRUISER 36

BROKER'S COMMENTS

This Bavaria Cruiser 36 is a popular sailing yacht mainly because of its balance between comfort, performance and ease of use. Designed by Farr Yacht Design, the 2011 model is known for its thoughtful layout and sailing characteristics. If you are considering this boat, it is an excellent mix of sailing capacity and comfort, especially if ease of use and good all-round performance are important to you. Now available to view and admire at our sales marina in Hindeloopen.

Johan Nooitgedagt

SPECIFICATIONS

Dimensions	11.30 x 3.67 x 1.95 (m)	Builder	Bavaria Giebelstadt
Built	2011	Cabins	2
Material	GRP	Berths	5
Engine(s)	1 x Volvo Penta D1-20F diesel	Hp/Kw	18.00 (hp), 13.25 (kw)
Asking price	€ 89.000 (VAT Paid)	Lying	elsewhere / Not at sales office

CONTACT

Sales office	De Valk Hindeloopen B.V.	Telephone	+31 514 52 40 00
Address	Oosterstrand 1 8713 JS Hindeloopen NL	E-mail	hindeloopen@devalk.nl

DISCLAIMER

These particulars are given in good faith as supplied but cannot be guaranteed.



BAVARIA CRUISER 36

GENERAL

Model	BAVARIA CRUISER 36
Type	sailing yacht
LOA (m)	11,30
LWL (m)	9,90
Beam (m)	3,67
Draft (m)	1,95
Air draft (m)	17,20
Headroom (m)	1,95
Year built	2011
Builder	Bavaria Giebelstadt
Country	Germany
Designer	Farr Yacht Design
Displacement (t)	9,28
Ballast (tonnes)	cast iron 2,2
CE norm	A
Hull material	GRP
Hull colour	white
Hull shape	round-bilged
Keel type	fin keel
Superstructure material	GRP
Rubbing strake	stainless steel
Deck material	GRP
Deck finish	non-skid moulded in
Cockpit deck finish	non-skid moulded in
Antifouling (year)	2023
Window material	perspex
Deckhatch	yes
Fuel tank (litre)	polyethylene 150
Level indicator (fuel tank)	yes
Freshwater tank (litre)	polyethylene 210



BAVARIA CRUISER 36

Level indicator (freshwater)	yes
Blackwater tank (litre)	polyethylene
Greywater tank (litre)	polyethylene 70
Wheel steering	yes
Emergency tiller	yes
More info on hull	Keel hull joint reinforced

ACCOMMODATION

Cabins	2
Berths	5
Interior	mahogany
Floor	teak and holly
Open cockpit	yes
Saloon	yes
Headroom saloon (m)	1,95
Heating	diesel ducted hot air Webasto
Galley	yes
Countertop	corian
Sink	stainless steel
Cooker	calor gas Can 2 burner
Oven	yes
Microwave	Bosch
Fridge	Isotherm
Hot water system	220V + engine Sigmar Boiler
Water pressure system	electrical
Owners cabin	v-bed
Bed length (m)	2.0
Wardrobe	hanging and shelves
Bathroom	shared
Toilet	shared
Toilet system	electric Dometic



BAVARIA CRUISER 36

Wash basin	at the toilet
Shower	shared
Guest cabin 1	double bed Rear
Bed length (m)	2.00
Wardrobe	hanging and shelves

MACHINERY

No of engines	1
Make	Volvo Penta
Type	D1-20F
HP	18
kW	13.25
Fuel	diesel
Maximum speed (kn)	7
Cruising speed (kn)	6
Consumption (l/hr)	3
Engine hours	1075
Engine cooling system	freshwater heat exchanger
Drive	sail-drive
Engine controls	bowden cable
Gearbox	mechanical
Bowthruster	electric Exturn 180
Propeller type	fixed
Propeller blades	2
Batteries	yes
Start battery	2024 1x 85Ah
Service battery	2022 2x 120Ah
Battery charger	Quick SBC501 45A
Shorepower	with cable

NAVIGATION



BAVARIA CRUISER 36

Compass	Plastimo Olympic 135
Multi control display	Raymarine ST-70
Depth sounder	Raymarine ST-70
Log	Raymarine ST-70
VHF	Raymarine Ray 49E
Autopilot	Raymarine ST-6002
Rudder angle indicator	Raymarine ST-6002
Plotter/GPS	Raymarine Hybrid Touch 9"

EQUIPMENT

Sprayhood	yes
Cockpit table	yes
Boarding ladder	stainless steel
Anchor	CQR Plough
Anchor chain	yes
Windlass	electrical Quick
Dinghy	inflatable
Outboard	Mercury 5HP
Outboard support	yes
Sea railing	wire
Grab rail (superstructure)	yes
Pushpit	yes
Pulpit	yes
Life raft	valise (or bag)
Life raft (pers)	valise (or bag) 4
Fenders	yes
Mooring lines	yes
Spare parts	yes
TV	Toshiba
Radio-cd player	Kenwood KDC 4047
Speakers in salon	yes



Speakers in cabin	yes
Clock - barometer	yes

RIGGING

Rigging	sloop
Standing rigging	wire
Brand mast	Seldén
Material mast	aluminium
Spreaders	2 pair
Mainsail	42m2
Stoway mast	yes
Genoa	27m2
Genoa furler	Furlex 200S
Reefing System	main in-mast furling
Backstay adjuster	tackle
Boomvang	gasspring
Genoa sheetwinches	Lewmar 2 x ST40
Multifunctional winches	halyard/sheet winches Lewmar 2 x ST30



BAVARIA CRUISER 36



BAVARIA CRUISER 36



BAVARIA CRUISER 36



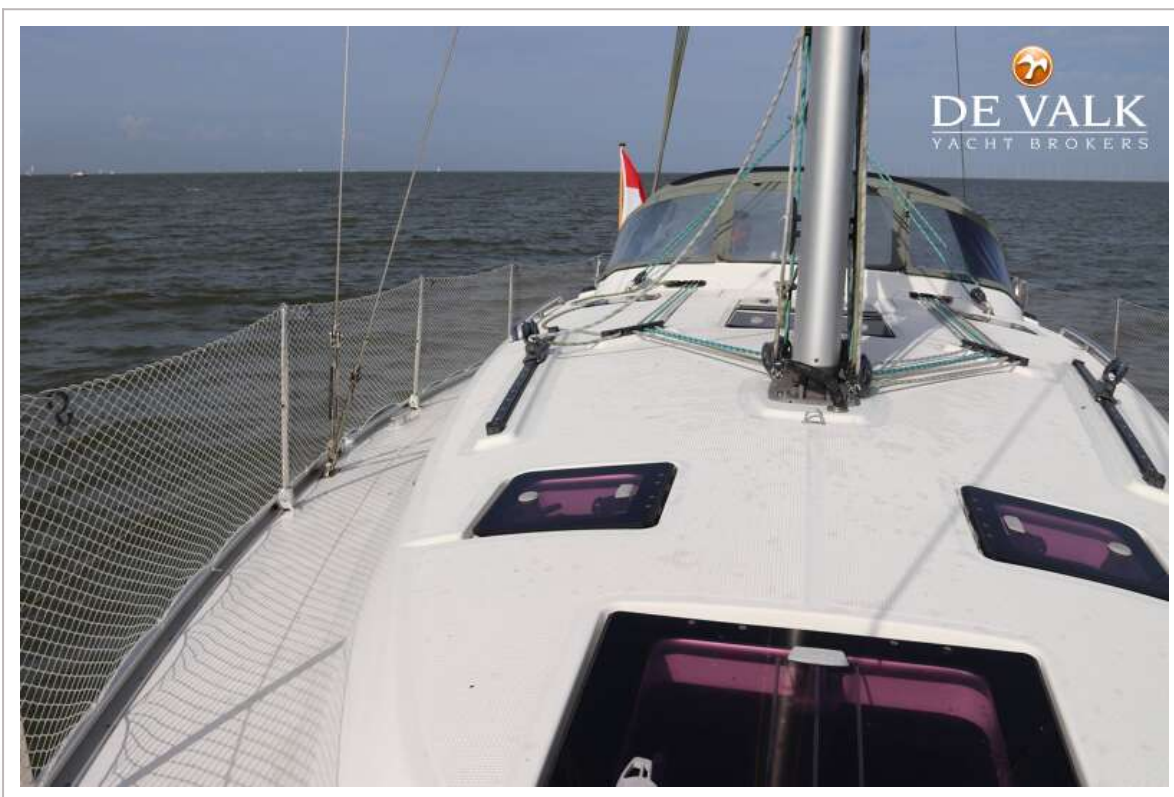
BAVARIA CRUISER 36



BAVARIA CRUISER 36



BAVARIA CRUISER 36



BAVARIA CRUISER 36



BAVARIA CRUISER 36



BAVARIA CRUISER 36



BAVARIA CRUISER 36



BAVARIA CRUISER 36



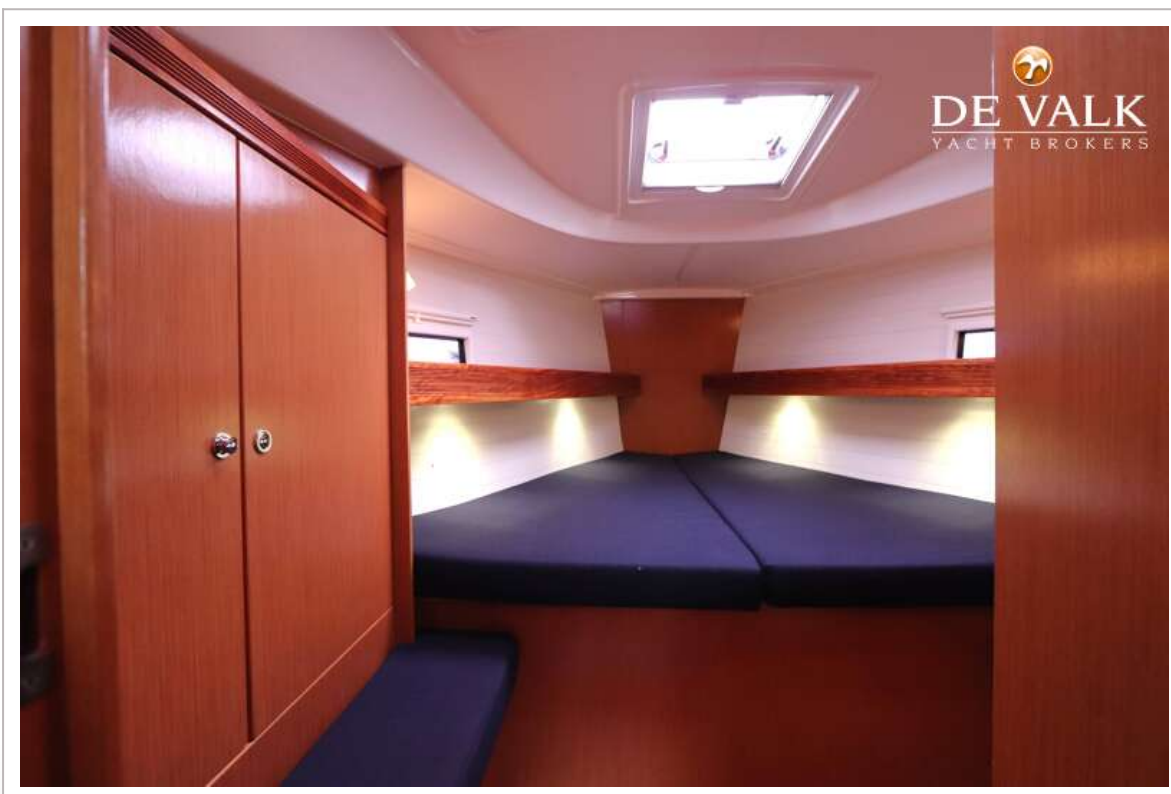
BAVARIA CRUISER 36



BAVARIA CRUISER 36



BAVARIA CRUISER 36



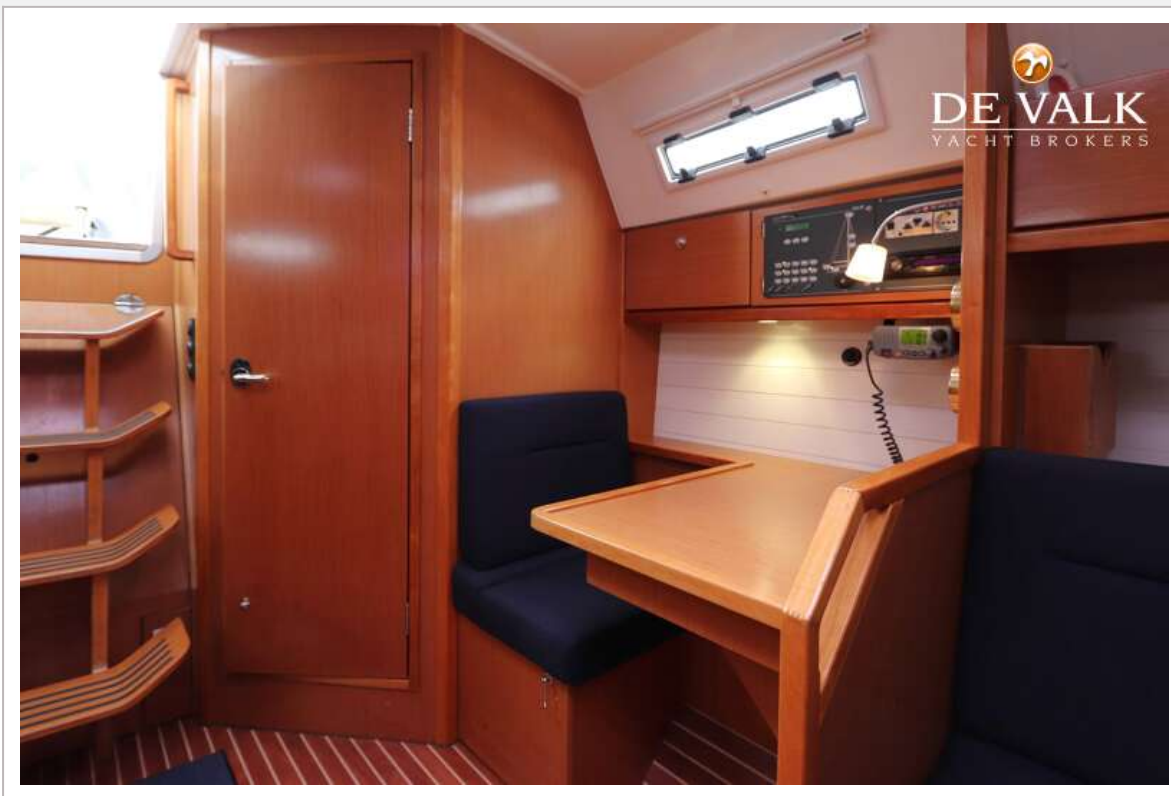
BAVARIA CRUISER 36



BAVARIA CRUISER 36



BAVARIA CRUISER 36



BAVARIA CRUISER 36



BAVARIA CRUISER 36

