



BAVARIA 34-2



BROKER'S COMMENTS

This Bavaria 34 is in good condition and has been continuously maintained and upgraded by specialized companies. The Bavaria 34 offers a great deal of living comfort, also in the cockpit (due to the new cockpit cover). The boat is equipped with red upholstery (2018), roller sails (2019), chart plotter (2020), sprayhood & cockpit tent (2022), toilet & hoses (2023), autopilot, heater, boiler, life raft, dinghy and outboard engine. The current (rented) mooring (with beautiful view) can be taken over. Make an appointment via our office in Sint Annaland to view the boat on shore in Herkingen.

Jan-Ward van Dantzig

SPECIFICATIONS

Dimensions	10.80 x 3.48 x 1.85 (m)	Builder	Bavaria Yachtbau
Built	2002	Cabins	2
Material	GRP	Berths	6
Engine(s)	1 x Volvo Penta MD 2030D BT diesel	Hp/Kw	29.00 (hp), 21.34 (kw)
Asking price	sold (VAT)	Lying	elsewhere / Not at sales office

CONTACT

Sales office	De Valk Sint Annaland B.V.	Telephone	+31 (0)166 601 000
Address	Koelhuisweg 4 4697 RM Sint Annaland NL	E-mail	sintannaland@devalk.nl

DISCLAIMER

These particulars are given in good faith as supplied but cannot be guaranteed.



GENERAL

Model	BAVARIA 34-2
Type	sailing yacht
LOA (m)	10,80
LWL (m)	8,45
Beam (m)	3,48
Draft (m)	1,85
Air draft (m)	15,00
Headroom (m)	1,84
Year built	2002
Builder	Bavaria Yachtbau
Country	Germany
Designer	J & J Design
Displacement (t)	4,5
Ballast (tonnes)	cast iron 1,8
CE norm	A
Hull material	GRP
Hull colour	white With a blue striping
Hull shape	round-bilged
Keel type	fin keel
Superstructure material	GRP
Rubbing strake	aluminum
Deck material	GRP
Deck finish	non-skid moulded in
Superstructure deck finish	non-skid moulded in
Cockpit deck finish	teak (needs some little attention)
Antifouling (year)	2023
Dorades	1 x
Window frame	aluminium Rudgersson
Window material	polycarbonate
Deckhatch	6 x Lewmar with rollo



Portholes	aluminium
Fuel tank (litre)	polyethylene 90 (dieseltank cleaned in 2023)
Level indicator (fuel tank)	yes
Freshwater tank (litre)	polyethylene 150
Level indicator (freshwater)	yes
Blackwater tank (litre)	polyethylene 60 (Vetus with 3-way valve)
Blackwater tank extraction	deck extraction + pump (Electric Jabsco)
Wheel steering	cable steering Whitlock pedestal with a leather covered stainless steel wheel
Emergency tiller	yes
Extra info	6 x Aluminium mooring clamp (so also amidships)
Extra info	The present owner bought the boat in 2020 from the first owner
Extra info	Exterior has been professional polished in May 2024

ACCOMMODATION

Cabins	2
Berths	6
Interior	mahogany With a red upholstery (New in 2018)
Floor	woodprint "teak & holly" look-a-like
Saloon	yes
Headroom saloon (m)	1,80 - 1,83
Heating	diesel ducted hot air Eberspacher
Chart table	On starboard side - Headroom : 1,84 m
Aft Cabin	1 x
Dinette	yes
Convertible berth	Both sofa seats : 2 x 1,98 x 0,75 m
Galley	On port side - Headroom : 1,81 m
Countertop	Duropol White with gray dots
Sink	stainless steel 1 x
Cooker	calor gas Techimpex 2 x burner (stainless steel)
Oven	Techimpex



Fridge	Top loader with a Domestic Waeco ColdMachine (New in 2020)
Hot water system	220V + engine Boiler
Water pressure system	electrical
Owners cabin	v-bed In the front cabin - Headroom : 1,83 m
Bed length (m)	1,95 x 1,60
Wardrobe	hanging and shelves On starboard side and on port side
Bathroom	shared Headroom 1,78 m
Toilet	shared In the bathroom
Toilet system	manual Jabsco toilet & the toilet hoses have been renewed in 2022
Wash basin	in the bathroom
Shower	shared In the bathroom with an electric shower drain water pump
Extra info	New in 2018 : Red mattresses in both cabins
Guest cabin 1	double bed In the aft cabin - Headroom : 1,77 m
Bed length (m)	2,05 x 1,65
Wardrobe	hanging and shelves
Extra info	Lee Cloth between mattresses in the aft cabin
Extra info	3 x Drawer under the saloon table
Extra info	4 x 220 Volt socket

MACHINERY

No of engines	1
Make	Volvo Penta
Type	MD 2030D BT
HP	29
kW	21.34
Fuel	diesel
Year installed	2002
Maximum speed (kn)	6,5
Cruising speed (kn)	5,5
Consumption (l/hr)	2,5



Engine hours	1735
Engine cooling system	freshwater heat exchanger
Drive	sail-drive
Saildrive seal	New in 2021
Engine controls	bowden cable
Exhaust	watercooled
Propeller type	fixed
Propeller blades	2
Manual bilge pump	yes
Electric bilge pump	yes
Electrical installation	12 & 220 Volt
Start battery	New in 2019 : 1 x 80 Ah
Service battery	New in 2022 : 2 x 140 Ah AGM
Battery charger	New in 2022 : Victron 30A Blue Smart Charger - Bluetooth
Diode battery combiners	yes
Shorepower	with cable 1 x 20 meter cable & 1 x extra cable
Extra info	The engine has been maintained in 2024
Extra info	1 x Victron SmartSolar Charge Controller MPPT 75 15
Extra info	1 x Victron SmartShunt 500A/50mV

NAVIGATION

Compass	Plastimo Olympic 135 - on the pedestal
Depth sounder/log	Raytheon ST60 Tridata
Windset	Raymarine ST60
VHF	Raymarine Ray 55E with a second handset in the cockpit
Autopilot	Raymarine ST4000+. The Raymarine drive has been renewed in 2022
Radar	JRC LCD Radar 1000
GPS	Raytheon RN300
Plotter/GPS	New in 2020 : Raymarine Axiom 7+ on the pedestal (removable)
Navtex	Clipper Navtex



Electronis chart(s)

New in 2020 : Navionics

Navigation lights

yes

EQUIPMENT

Sprayhood with grab rail

New in 2022 : Gray

Cockpit cover

New in 2022 : Gray

Bimini

Blue with removable stainless steel frames

Winter cover

Black (only over the cockpit)

Cockpit table

Teak (hanging in front of pedestal)

Bathing platform

Non-skid moulded in

Boarding ladder

stainless steel

Deck shower

Hot & cold pressured water

Anchor

CQR Plough

Anchor chain

Galvanised - 20 meter with a stainless steel swiffel

Dinghy

inflatable New in 2016 : Talamex

Outboard

New in 2018 : 2,5 Hp Suzuki 4 Stroke

Outboard support

On the pushpit

Sea railing

wire Double wired

Grab rail (superstructure)

stainless steel

Railing side opening gates

On both sides

Pushpit

Stainless steel

Pulpit

Stainless steel

Life raft

container New in 2020 : Seago ISO 9650-1

Life raft (pers)

6

Last life raft survey

December 2023

Lifebuoy

1x White horseshoe buoy & 1x Compass Rescue Harness

Safety lines on deck

2 x Ankorlina

Horn

Signal horn - Accoustic gas horn

Radar reflector

Firdel Blipper on front side of the mast

Fenders

10 x

Mooring lines

8 x



Spare parts	yes
Radio-cd player	New in 2021 : JVC DAB+ Bluetooth
Cockpit speakers	2 x
Speakers in salon	4 x
Clock - barometer	Weems & Plath Clock & Barometer
Fire extinguisher	3 x
Latest extinguisher survey	Need to be checked / renewed
Extinguisher in engine room	Mabo
Extra info	Fire Blancket, 2 x Smoke alarm, Emergency ladder
Extra info	Emergency Beacon
Extra info	Stainless steel flagpole

RIGGING

Rigging	fractional
Standing rigging	wire Stainless steel
Brand mast	Seldén
Material mast	aluminium
Spreaders	2 x set
Mainsail	New in 2019 : Halver Sails : Furling Mainsail
Stoway mast	Manual Selden Furlin mast
Genoa	New in 2019 : Halver Sails : Furling Genoa with a blue UV ply
Genoa furler	Furlex S200
Reefing System	main in-mast furling (From the cockpit)
Backstay adjuster	tackle
Boomvang	tackle
Genoa sheetwinches	2 x Harken 40 ST
Halyard winches	2 x Harken 16 ST
Winchcovers	2 x White
Extra info	2x Blue Performance Winch Handle Pocket
Extra info	2x Blue Performance Hallyard Storage-Pocket



BAVARIA 34-2



BAVARIA 34-2



BAVARIA 34-2



BAVARIA 34-2



BAVARIA 34-2



BAVARIA 34-2





BAVARIA 34-2



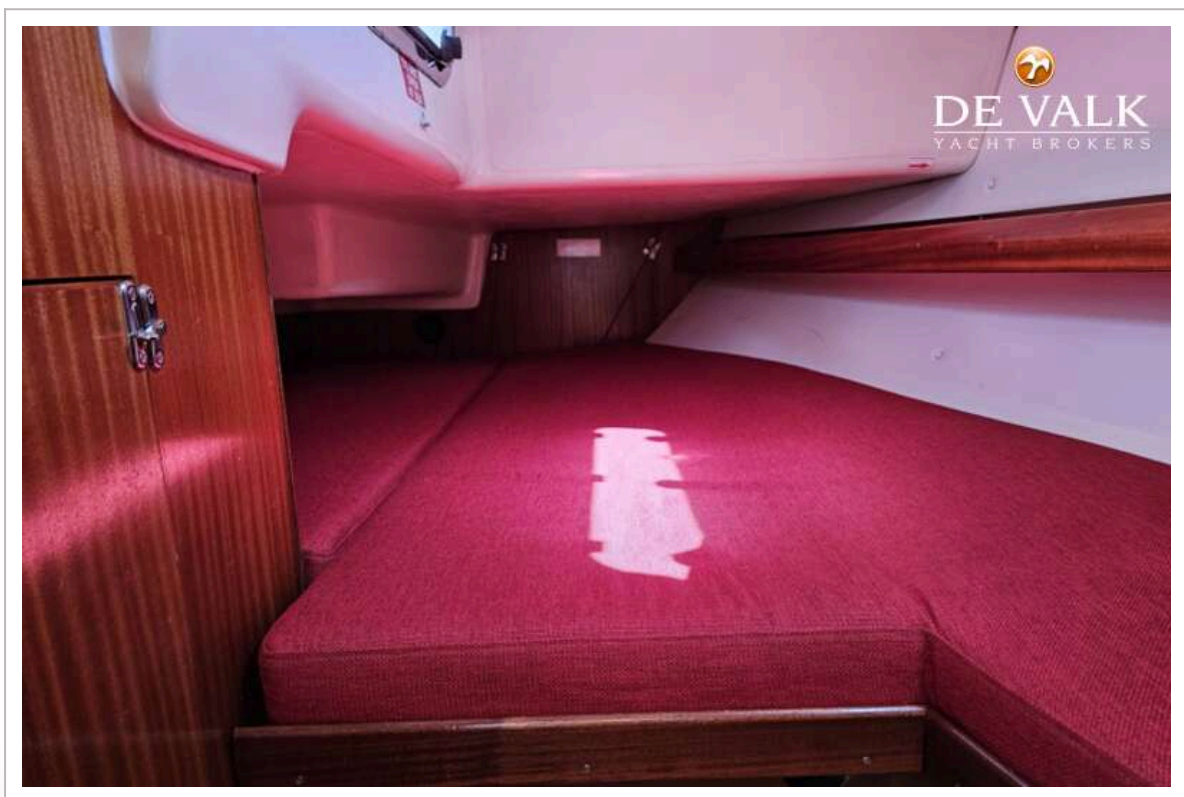
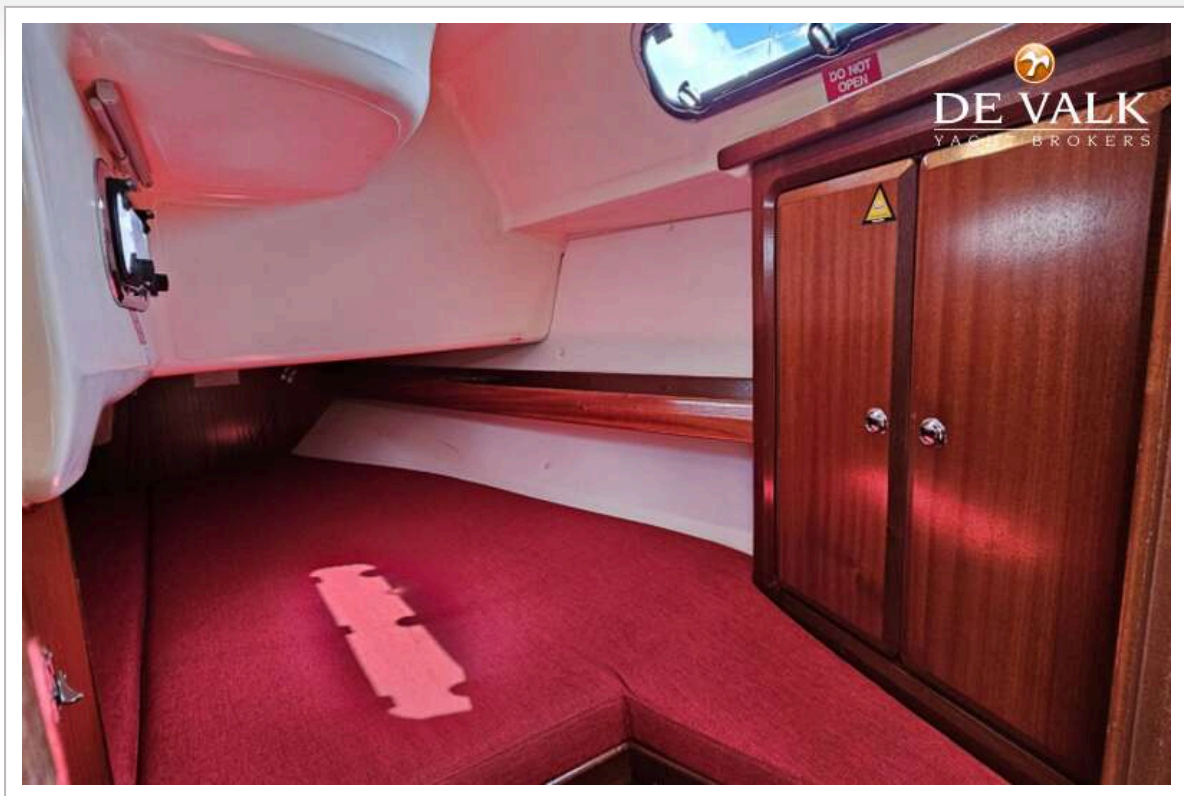
BAVARIA 34-2



BAVARIA 34-2



BAVARIA 34-2

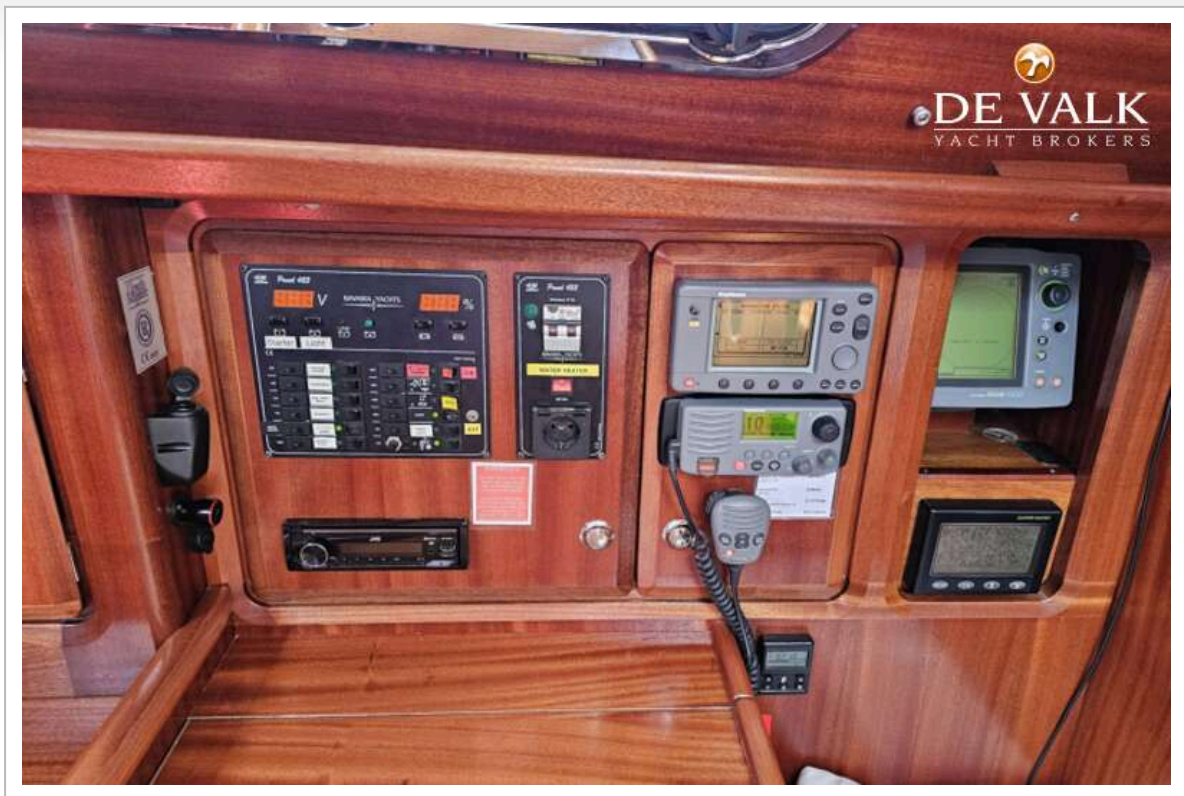


BAVARIA 34-2



BAVARIA 34-2





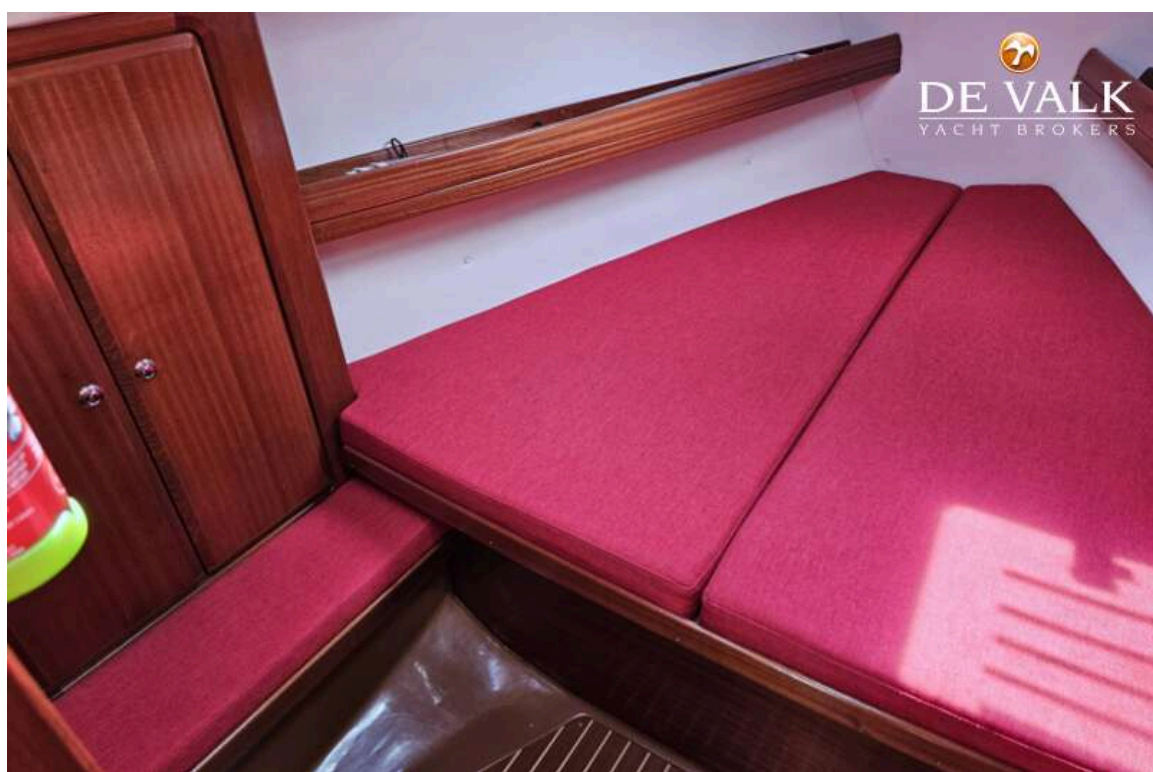
BAVARIA 34-2



BAVARIA 34-2



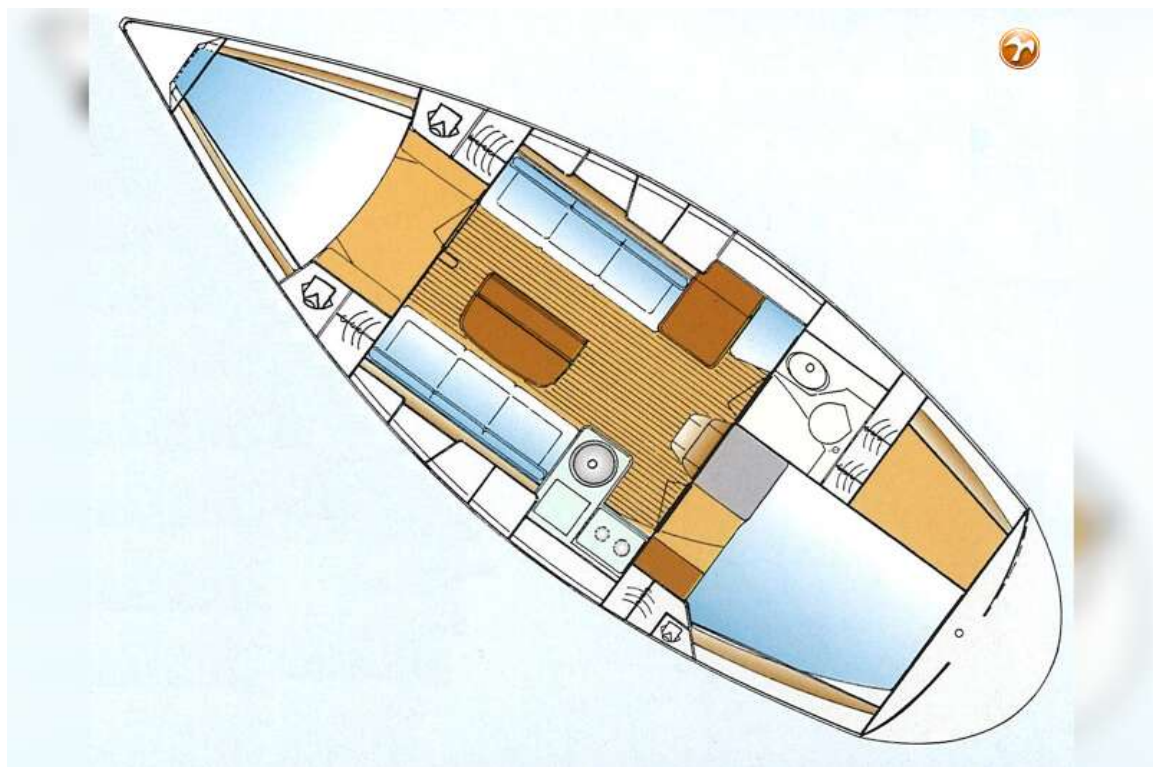
BAVARIA 34-2



BAVARIA 34-2



BAVARIA 34-2



BAVARIA 34-2



