



DE VALK  
YACHT BROKERS



GULFSTAR 60 MKII



DE VALK  
YACHT BROKERS

BROKERAGE | CHARTER | BERTHS | FINANCE | INSURANCE | YACHT MANAGEMENT

# GULFSTAR 60 MKII

## BROKER'S COMMENTS

60 Feet, center cockpit, true blue water cruiser, the Gulfstar 60 MkII is a proven world voyager built for comfort, safety, and independence at sea. Her layout offers a large owner cabin, full beam salon, 3 guest cabins and 3 bathrooms. A live onboard layout you want doing long passages or extended stays onboard. With generous storage, robust build, upgraded systems, and a seaworthy design, the Gulfstar 60 delivers the ideal blend of durability, seaworthiness, and long range ready to explore in comfort and confidence. Contact us for detailed information and your onboard visit.

*Jan-Ward van Dantzig*

## SPECIFICATIONS

<b>Dimensions</b>	18.44 x 4.88 x 2.00 (m)	<b>Builder</b>	Gulfstar Yachts
<b>Built</b>	1986	<b>Cabins</b>	4
<b>Material</b>	GRP	<b>Berths</b>	8
<b>Engine(s)</b>	1 x Yanmar 4LHA-HTP (2008) diesel	<b>Hp/Kw</b>	160.00 (hp), 117.76 (kw)
<b>Asking price</b>	€ 199.000 (VAT Paid)	<b>Lying</b>	The Netherlands

## CONTACT

<b>Sales office</b>	De Valk Thuishaven	<b>Telephone</b>	+31 35 5829042
<b>Address</b>	Peperstraat 7 1411 PX Naarden NL	<b>E-mail</b>	thuishaven@devalk.nl

## DISCLAIMER

These particulars are given in good faith as supplied but cannot be guaranteed.



## GENERAL

Model	GULFSTAR 60 MKII
Type	sailing yacht
LOA (m)	18,44
LWL (m)	14,73
Beam (m)	4,88
Draft (m)	2,00
Air draft (m)	24,00
Headroom (m)	2,00
Year built	1986
Builder	Gulfstar Yachts
Country	U.S.A.
Designer	R.C. Lazzara
Displacement (t)	27,25
Ballast (tonnes)	lead 7,7
CE norm	A
Hull material	GRP
Hull colour	Oyster White
Hull shape	S-bilged
Keel type	long keel
Superstructure material	GRP
Rubbing strake	stainless steel
Deck material	GRP
Deck finish	non-skid paint (2025)
Superstructure deck finish	non-skid paint (2025)
Cockpit deck finish	synthetic teak (2014)
Dorades	stainless steel
Window frame	stainless steel
Window material	perspex (2023) plus rollo's
Deckhatch	Vetus - with rollo shades
Portholes	aluminium



# GULFSTAR 60 MKII

<b>Radar arch</b>	non collapsible Stainless/rvs/edelstahl
<b>Fuel tank (litre)</b>	stainless steel 1400
<b>Level indicator (fuel tank)</b>	VDO
<b>Freshwater tank (litre)</b>	GRP 1500
<b>Level indicator (freshwater)</b>	VDO
<b>Blackwater tank (litre)</b>	stainless steel 3 x
<b>Blackwater tank extraction</b>	deck extraction + uw line 3 x
<b>Wheel steering</b>	mechanical
<b>Tiller</b>	yes
<b>Emergency tiller</b>	yes
<b>More info on hull</b>	Full length stringers and floors stiffen the very solid hull.
<b>More info on paintwork</b>	In 2023 the deck and the superstructure have been treaded with 9 layers of epoxy primer, one layer of International 3 component primer Perfect Pro. Afterwards the deck, the superstructure and the cockpit have been painted twice in high gloss Perfection Pro Artic White. In September 2025 the non-skid was painted (sand-colored two-component marine epoxy paint Hempel Hempthane Topcoat 55210 RAL1015) and finished with AWL Grip non-skid sand. Both windows and portholes frames have been re-seated and overhauled with new seals in 2023.
<b>Extra info</b>	All old layers of antifouling have been removed from the underwater hull in 2017 and then an epoxy system was applied (not due to osmosis).
<b>Extra info</b>	The deck space is terrific with outward deck mounted chainplates. 6 x Stainless steel mooring cleat and fairlead. Very large storage in the bow. The cockpit is modern with long seats easy to lie down on. If you are interested in this boat but find the distance to its current location a challenge, the seller is open to delivering the boat (after the transfer of ownership) to a marina of your choice.

## ACCOMMODATION

<b>Cabins</b>	4
<b>Berths</b>	8



# GULFSTAR 60 MKII

<b>Crew cabin</b>	Starboardside from companionway is walkthrough to captain's cabin
<b>Crew berths</b>	1 x
<b>Interior</b>	Teak plus white panelling
<b>Floor</b>	teak and holly
<b>Saloon</b>	U-shaped dinette opposite a L-shaped settee with Off White leather upholstery (2010).
<b>Headroom saloon (m)</b>	2,00
<b>Heating</b>	diesel ducted hot air Planar (2022) with blowing points in aft cabin, saloon & galley
<b>Air-conditioning</b>	reverse cycle airco 2 x Webasto (for all cabins)
<b>Chart table</b>	Starboardside from companionway - headroom: 2,00 m
<b>Aft Cabin</b>	Very spacious - headroom: 2,00 m
<b>Galley</b>	On portside along the walkthrough - headroom : 2,05 - 1,80 m
<b>Countertop</b>	Duropol
<b>Sink</b>	stainless steel 2 x
<b>Cooker</b>	ceramic Ariston 2 burner - half-gimballed (220v)
<b>Extractor</b>	Dometic
<b>Microwave/oven combi</b>	Bosch Innowave (2018)
<b>Fridge</b>	Top loader with a water cooled Superfrigomat 5F compressor (pump needs to be replaced)
<b>Freezer</b>	Top loader with a water cooled Frigoboat compressor (pump needs to be replaced)
<b>Hot water system</b>	220V + engine 60 ltr
<b>Water pressure system</b>	electrical Cempump
<b>Owners cabin</b>	French bed
<b>Bed length (m)</b>	2,00 x 1,50 mtr, headroom 2,00 mtr
<b>Wardrobe</b>	hanging/drawers/shelves
<b>Bathroom</b>	en suite I
<b>Toilet</b>	en suite
<b>Toilet system</b>	vacuum
<b>Wash basin</b>	in the bathroom
<b>Shower</b>	en suite



<b>Extra info</b>	Mattresses renewed in 2018 with lee-cloths, headroom bathroom 1,85-2,00 mtr
<b>Guest cabin 1</b>	bunk bed
<b>Bed length (m)</b>	2,00 x 0,85 / 2,00 x 0,80 mtr, headroom 2,00 mtr
<b>Wardrobe</b>	hanging and shelves
<b>Bathroom</b>	shared II
<b>Toilet</b>	shared
<b>Toilet system</b>	vacuum
<b>Wash basin</b>	in the bathroom
<b>Shower</b>	shared
<b>Extra info</b>	Mattresses renewed in 2018 with lee-cloths, headroom bathroom 1,88 mtr.
<b>Guest cabin 2</b>	bunk bed
<b>Bed length (m)</b>	2,00 x 0,85 / 2,00 x 0,80 mtr, headroom 2,00 mtr
<b>Wardrobe</b>	hanging and shelves
<b>Crew cabin(s)</b>	1 x bed : 2,00 x 0,80 mtr, headroom : 1,95 mtr.
<b>Bathroom (crew)</b>	III
<b>Toilet (crew)</b>	en suite
<b>Toilet system</b>	vacuum
<b>Wash basin</b>	in the bathroom
<b>Shower (crew)</b>	yes
<b>Extra info</b>	Mattress renewed in 2018, with a Lee-Cloth. headroom bathroom 1,95 mtr
<b>Washing machine/dryer combi</b>	Zanussi TurboDry 1000 (HydroSystem - extra capacity)
<b>Extra info</b>	During the refit in 2014 the following has been done : insulation fitted, leather on the ceiling plates and all lighting fixtures renewed. Also a Ber Ozono water filter system installed in 2008.
<b>Extra info</b>	The inside of the superstructure has been painted in white epoxy paint (2023). The woodwork finishing is some of Gulfstar's finest workmanship. Every corner is nicely radiused, and you could put up the quality of the interior against any other shipyard in the world. They used a patented process to camber teak edges and the rest of joinery is matching.



## MACHINERY

No of engines	1
Make	Yanmar
Type	4LHA-HTP (2008)
HP	160
kW	117.76
Fuel	diesel
Year installed	2008
Maximum speed (kn)	9
Cruising speed (kn)	8
Consumption (l/hr)	5,5
Engine hours	2055
Engine cooling system	freshwater heat exchanger
Drive	shaft
Shaft seal	yes
Engine controls	electrical (2008)
Gearbox	hydraulic (2008)
Bowthruster	electric Vetus
Exhaust	watercooled (2008)
Thrust bearing	Aquadrive (2008)
Propeller type	folding Gori (2008)
Propeller blades	3
Propeller shaft material	stainless steel
Shaft lubrication	water (2022)
Manual bilge pump	yes
Electric bilge pump	Blau Naval Marine Pump (2008) max 6,6m3/hour
Bilge alarm	yes
Electrical installation	12/24v DC & 110/220v AC (entire 220v system renewed in 2014)
Generator	wet exhaust Vetus (2008)
Running hours generator	340
Start battery	1 x AGM Deep Cycle (2022)



# GULFSTAR 60 MKII

<b>Service battery</b>	4 x 200 Ah Gel & 4 x 200 Ah AGM (2024)
<b>Navigation Battery</b>	yes
<b>Bowthruster battery</b>	2 x 200 Ah AGM Deep Cycle (2023)
<b>Battery monitor</b>	Victron BMV 501
<b>Battery charger</b>	Victron Centaur 200amp, Vetus 80amp (engine), Victron (bowthruster), Victron Skylla TG 24v/50amp
<b>Inverter</b>	Victron Phoenix (12v/220v/3000watt)
<b>Solar panel</b>	800 watt Burger Meyer (double reflection - 2023) with Victron Solar MPTT 100/50 (2023)
<b>Diode battery combiners</b>	yes
<b>Shorepower</b>	with cable Electric/elektrisch/elektrisch
<b>Watermaker</b>	Aqua Whisper Sea Recovery System 250 l/h (2008). To be serviced.
<b>Extra info</b>	The engine room has plenty of room for accessing all major systems.
<b>Extra info</b>	The engine has been serviced annually and had a large service in 2022. Propeller shaft bearing also renewed in 2022. Separ fuel filter with water separator and Racor fuel filters. In 2008 the engineroom was completely emptied and everything was renewed & new installed, including new sound isolation.
<b>Extra info</b>	WaterCounter water management system WC1 (2011).

## NAVIGATION

<b>Compass</b>	Whitlock
<b>Electric compass</b>	Furuno THD Satellite Compass SC-50
<b>Multi control display</b>	Raymarine ST60+ Graphic
<b>Depth sounder/log</b>	Raymarine ST60+ Tridata
<b>Windset</b>	Raymarine ST60+
<b>Repeater</b>	Raymarine ST60+
<b>VHF</b>	Raymarine, Skanti 1000 P DSC, Sailor C4951WP
<b>VHF handheld</b>	1 x Simrad TC 50 GMDSS
<b>Autopilot</b>	Raymarine ST6002 (2009) & 2nd display at chart table
<b>Rudder angle indicator</b>	Raymarine ST60+





<b>Radar</b>	Furuno Navnet Radar Antenna mounted on mast (2014) and 1x Furuno Marine Radar 1715 on a half gimballed bracket on the arch on the stern
<b>GPS</b>	Furuno GPS Navigator & Raymarine
<b>Plotter</b>	Dell screen at chart table. Also functions as a radar-display repeater.
<b>Navtex</b>	JRC NCR-333 Navtex
<b>PC connection</b>	available, no PC/laptop installed
<b>Wifi antenna</b>	D-Link
<b>Electronic chart(s)</b>	yes
<b>AIS transceiver</b>	Furuno Universal AIS FA-150
<b>Radio receiver</b>	JRC NCT-196N DSC NBDP modem (2009)
<b>Transmitter</b>	JRC JSB-196 GMDSS radiotelephone (2009)
<b>EPIRB</b>	MacMurdo Smartfind E5/G5 - 406 Mhz - Class 2
<b>Personal MOB transmitter</b>	2 x & 1 x MacMurdo S4 rescue SART transponder (older battery, to be replaced)
<b>Navigation lights</b>	LED
<b>Searchlight</b>	aft deck
<b>Loudhailer</b>	Sailor SC4150 Iridium plus Standard Horizon VLH-3000
<b>Extra info</b>	Sextant

## EQUIPMENT

<b>Sprayhood</b>	yes
<b>Cockpit cover</b>	can be used as a Bimini (with side panels removed)
<b>Sun awning</b>	Over the complete boat (2014, as new, only used a few times)
<b>Cockpit cushions</b>	Blue with a extra & new spare set of covers
<b>Cockpit table</b>	teak, foldable
<b>Boarding ladder</b>	stainless steel
<b>Gangway</b>	Besenzoni (hydraulic)
<b>Deck shower</b>	yes
<b>Anchor</b>	Bruce 30 kg
<b>Anchor chain</b>	120 mtr (12mm - 2014)



Windlass	electrical Plus remote control
Capstan	yes
Outboard support	yes
Davits	stainless steel
Davits controls	manual
Sea railing	wire
Grab rail (superstructure)	teak
Railing side opening gates	2 x
Pushpit	yes
Pulpit	yes
Lifejackets	2 x
Safety harness	2 x
Lifebuoy	2 x
Safety lines on deck	(2022)
Rope cutter	(2021)
Horn	air pressure 2 x
Radar reflector	yes
Fenders	yes
Mooring lines	yes
Spare parts	for engine, genset, toilets et cetera.
TV	Samsung
TracVision ball	yes
Radio-cd player	2 x
Surround Sound System	(2022)
Sub-woofer	(2022)
Cockpit speakers	yes
Speakers in salon	Pioneer
Speakers in cabin	in every cabin
Clock - barometer	clock in every cabin
Latest extinguisher survey	survey expired
Extinguisher in engine room	survey expired



Extra info	LED underwater lighting (2023) plus LED backgroud lit name on the transom.
Extra info	Stainless steel Magma BBQ (with all accessories) on the pushpit.

## RIGGING

Rigging	sloop-cutter
Standing rigging	Dyform (2014)
Brand mast	Formula Masts (2014)
Material mast	aluminium coated Alexseal Cloud White (2014)
Spreaders	2 x set
Keel stepped mast	yes
Mainsail	Climent laminate furling mainsail (2014 - adequate)
Stoway mast	hydraulic operation (2014)
Cutterstay	removable, with a tensioner (2014)
Jib	1 x Climent cutter jib (2014 - unused) plus 1 x cutter jib (old)
Genoa	Climent laminate furling genoa (moderate condition)
Genoa furler	Harken - hydraulic operation (2014)
Gennaker	Climent with loose Facnor furler (both 2014 - never used, like new)
Reefing System	main in-mast furling Hydraulic
Boomvang	hydraulic Navtec (2014)
Primary sheet winch	2 x Barient 28 ST
Secondary sheet winch	1 x Barient 27 ST (mainsail sheet)
Genoa sheetwinches	2 x Barient 36 ST (electric)
Halyard winches	2 x Barient 25
Spi-pole	carbon
Extra info	After renewing of rigging in 2014, the yacht was regularly serviced but not used again till 2022.



# GULFSTAR 60 MKII



# GULFSTAR 60 MKII





# GULFSTAR 60 MKII

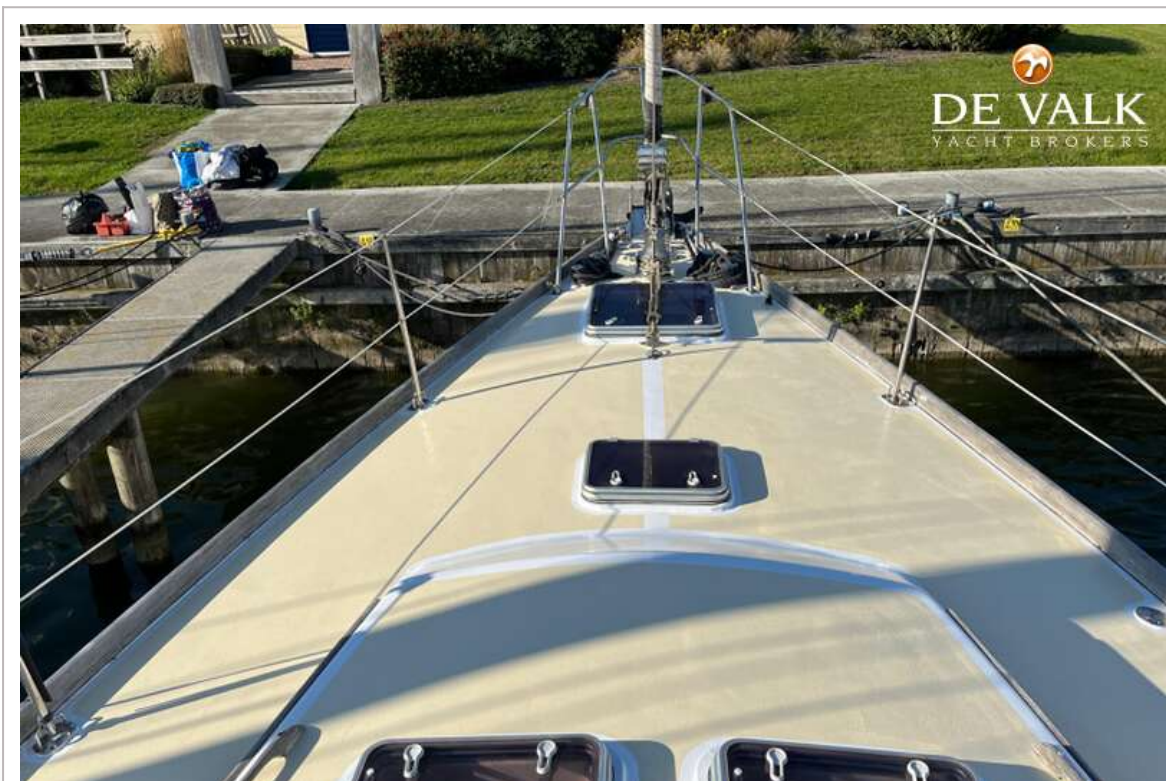


# GULFSTAR 60 MKII



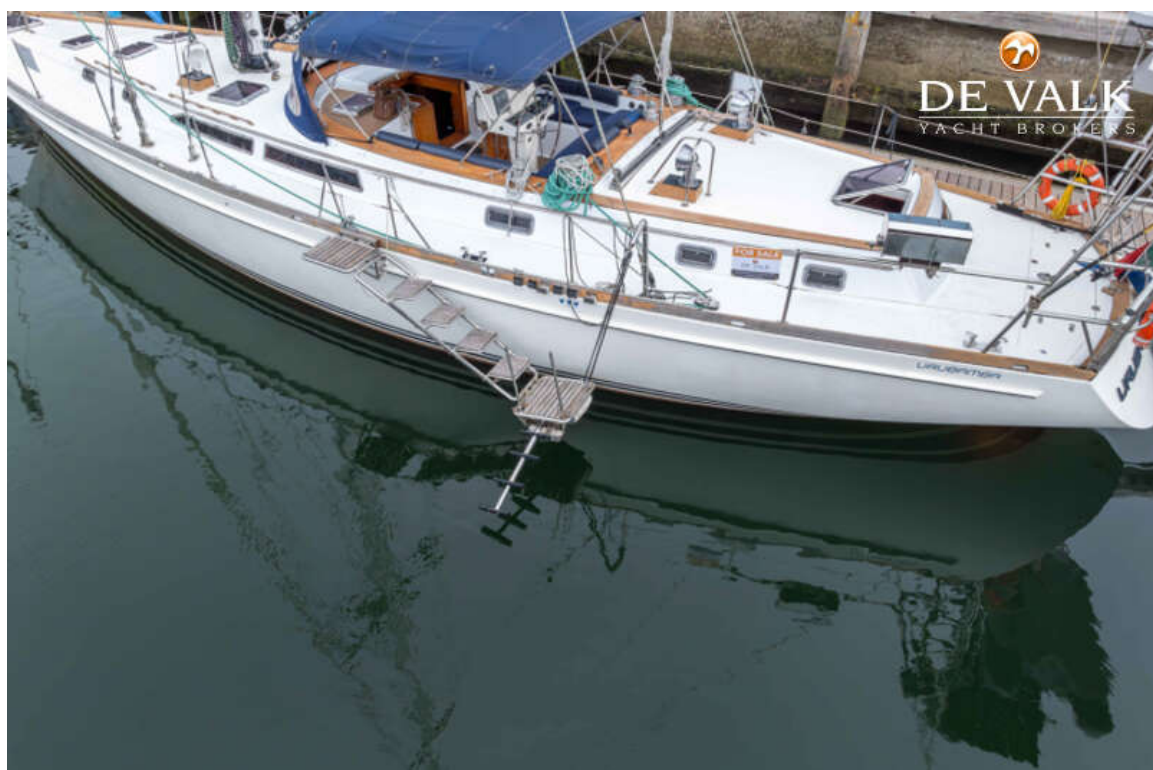
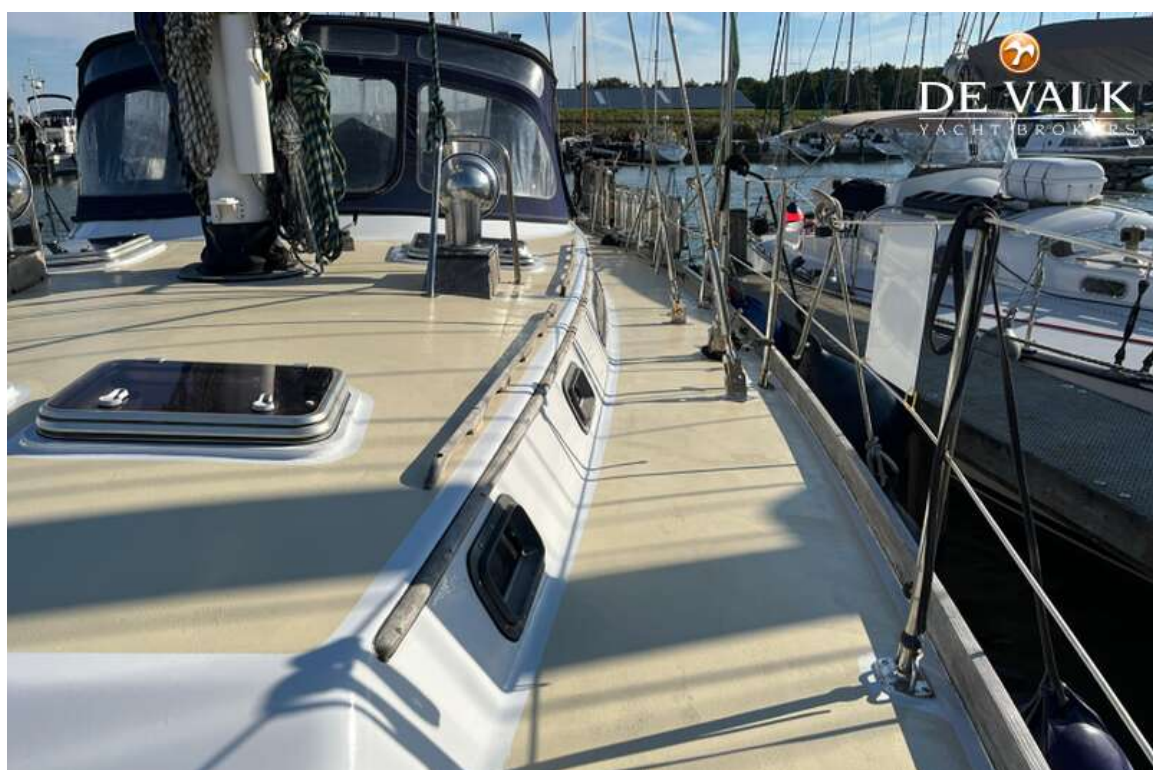


# GULFSTAR 60 MKII

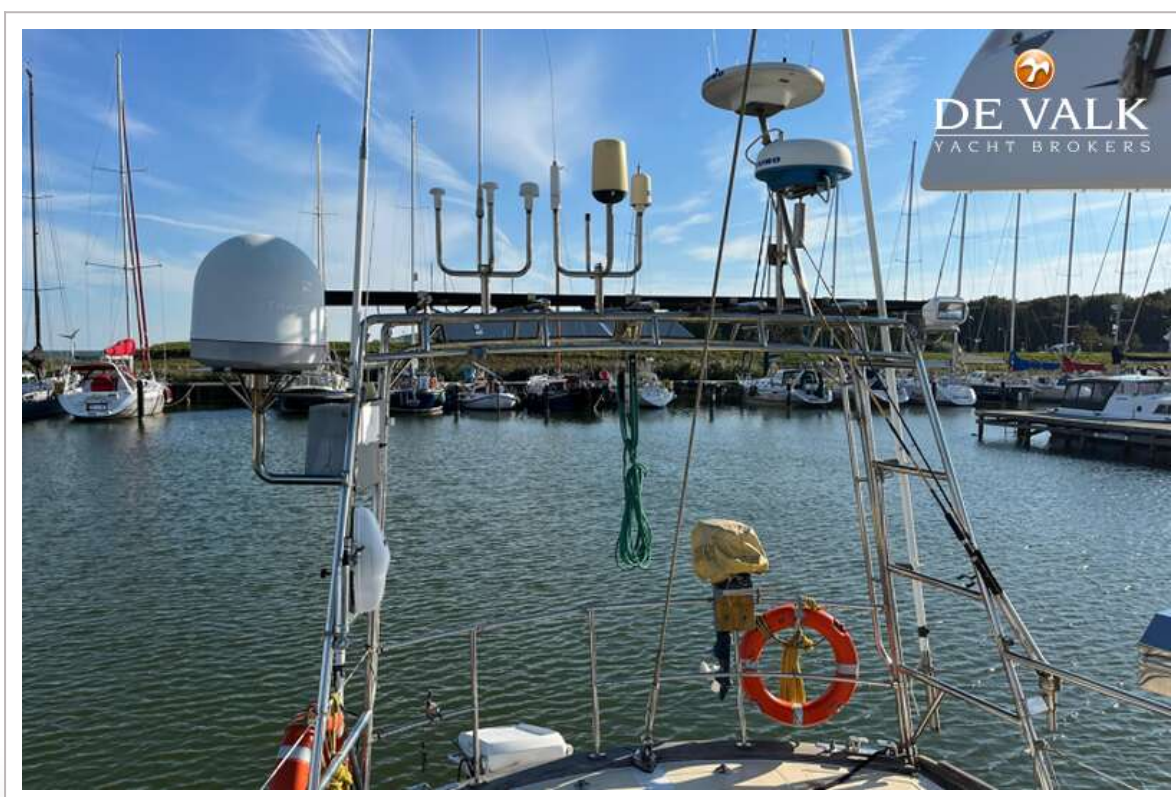




# GULFSTAR 60 MKII



# GULFSTAR 60 MKII



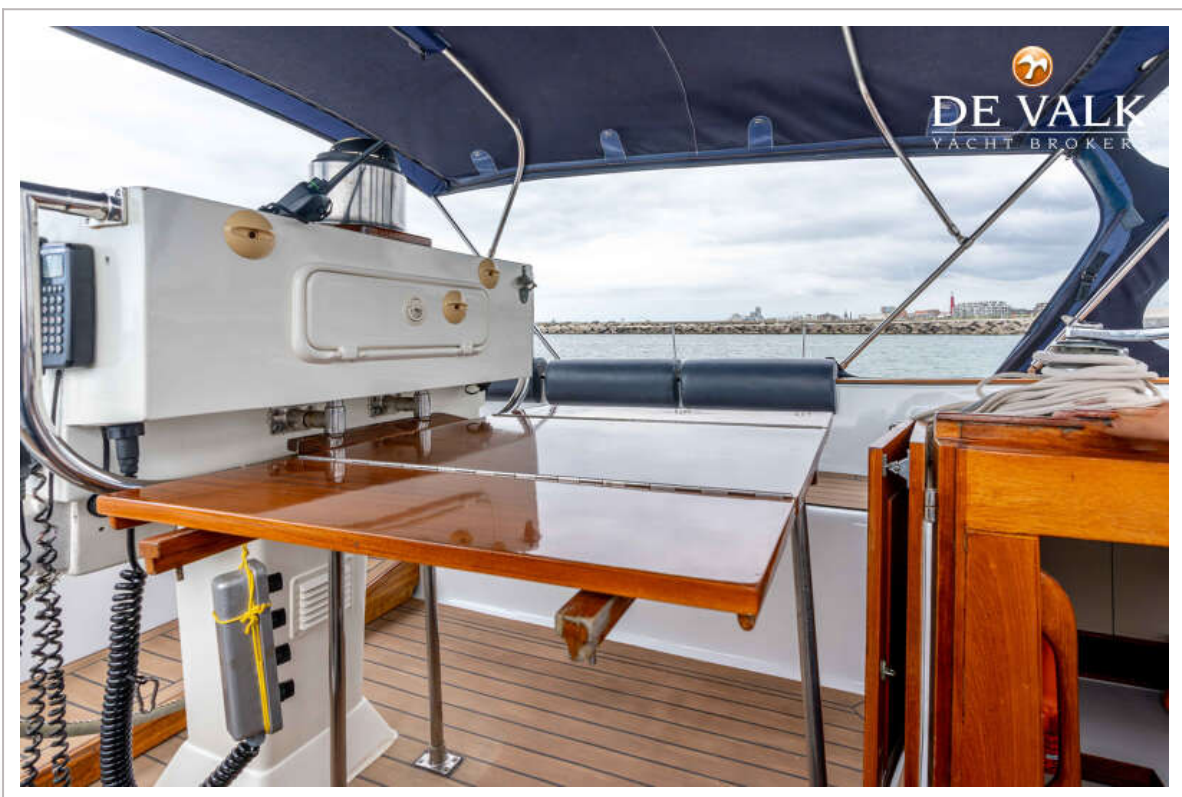


# GULFSTAR 60 MKII

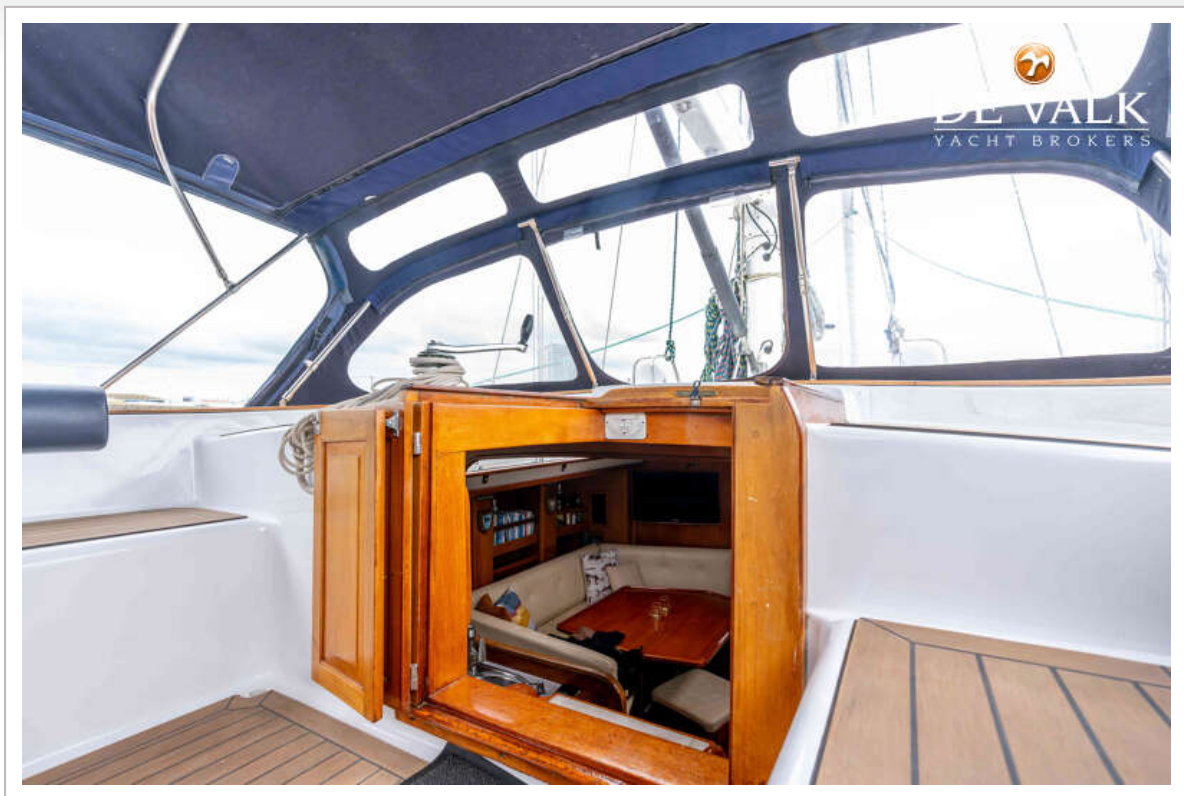




# GULFSTAR 60 MKII



# GULFSTAR 60 MKII

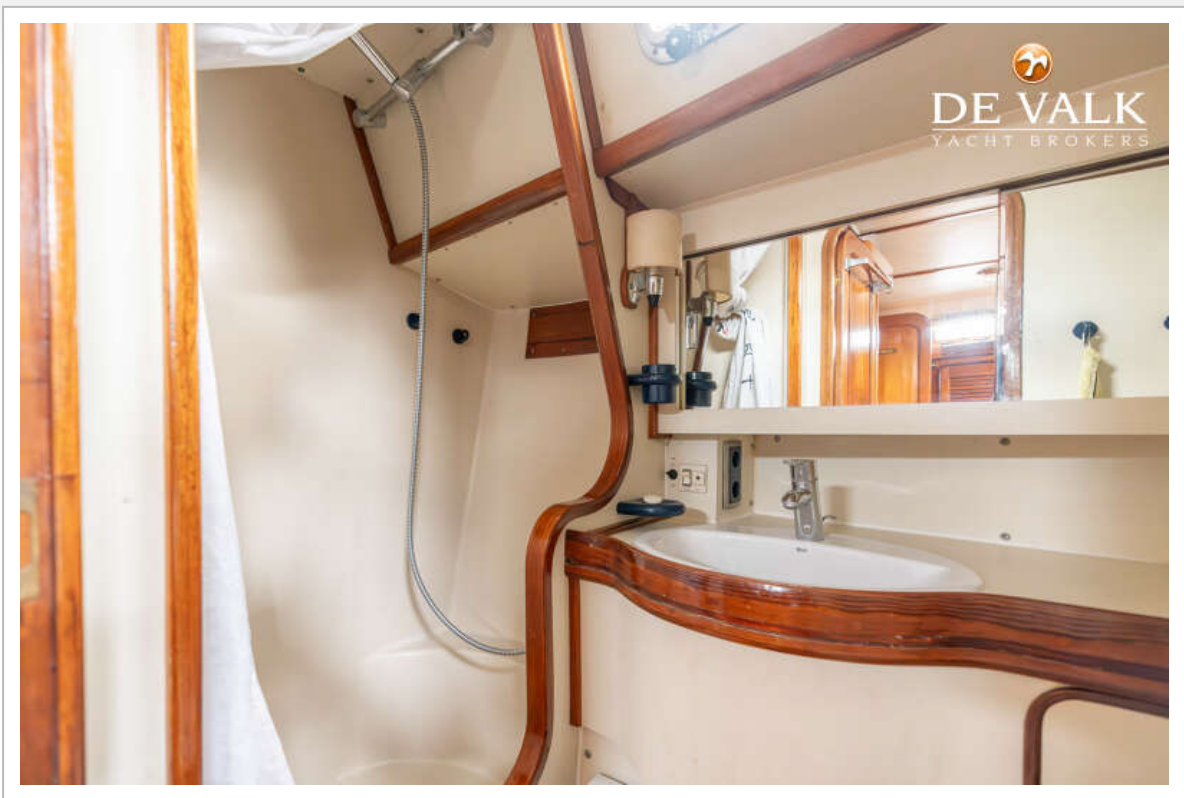




GULFSTAR 60 MKII

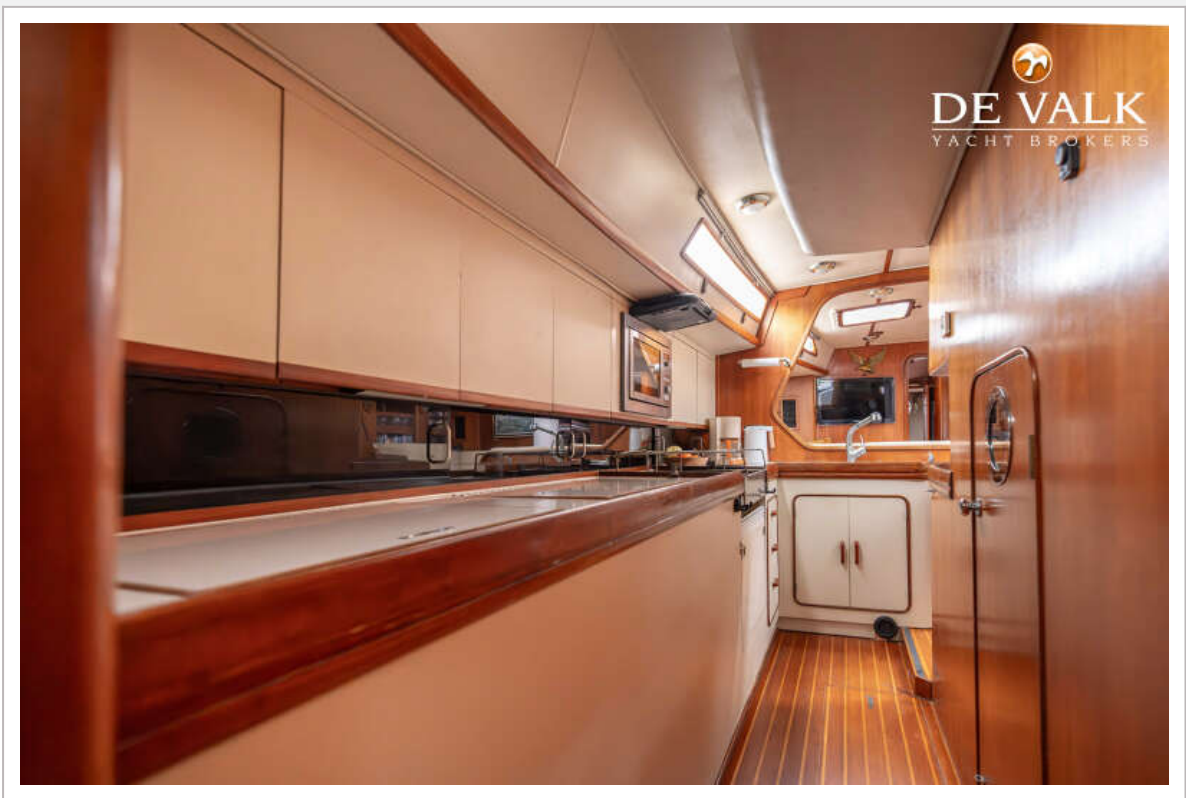


GULFSTAR 60 MKII





# GULFSTAR 60 MKII

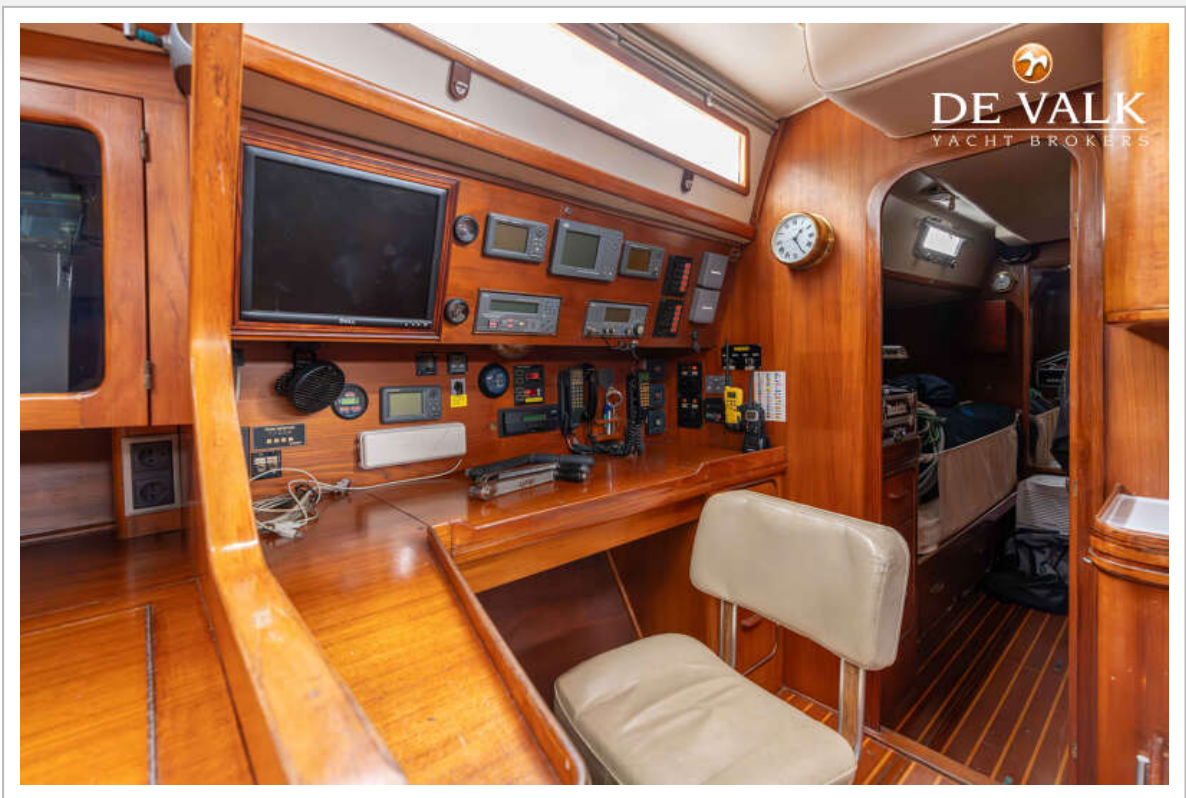




# GULFSTAR 60 MKII

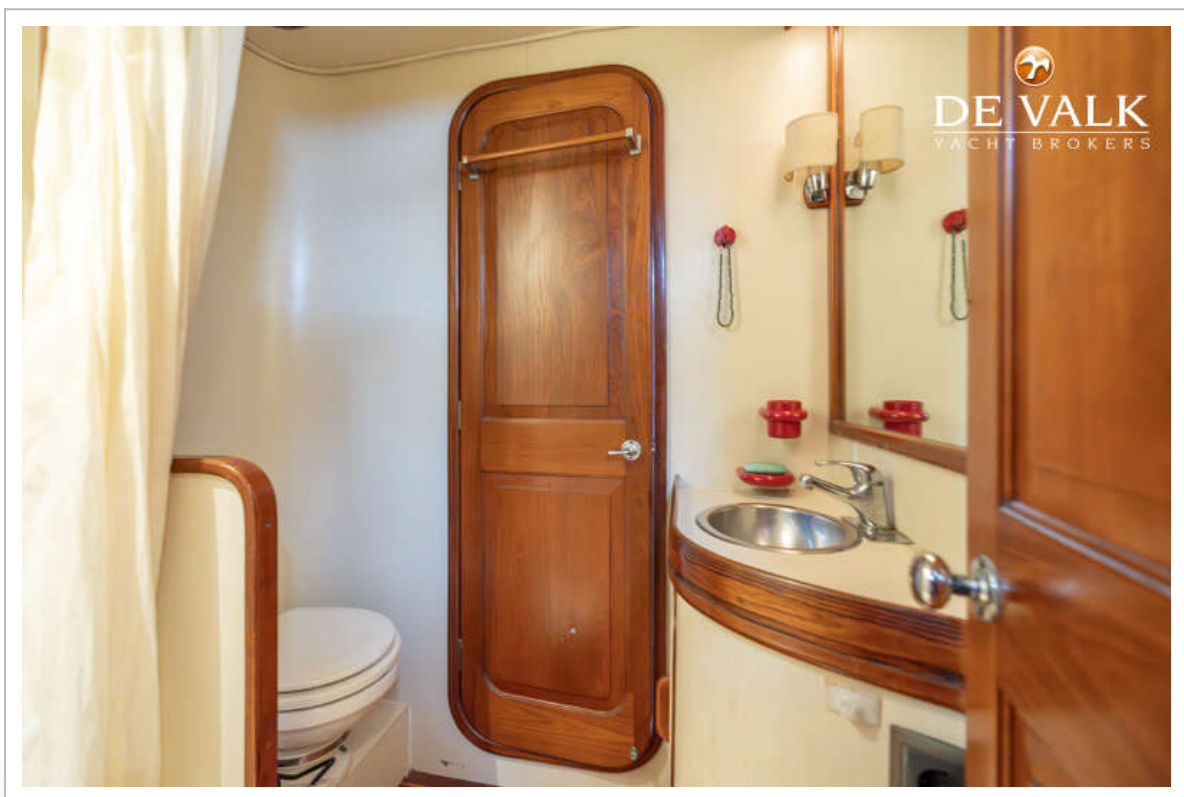


GULFSTAR 60 MKII

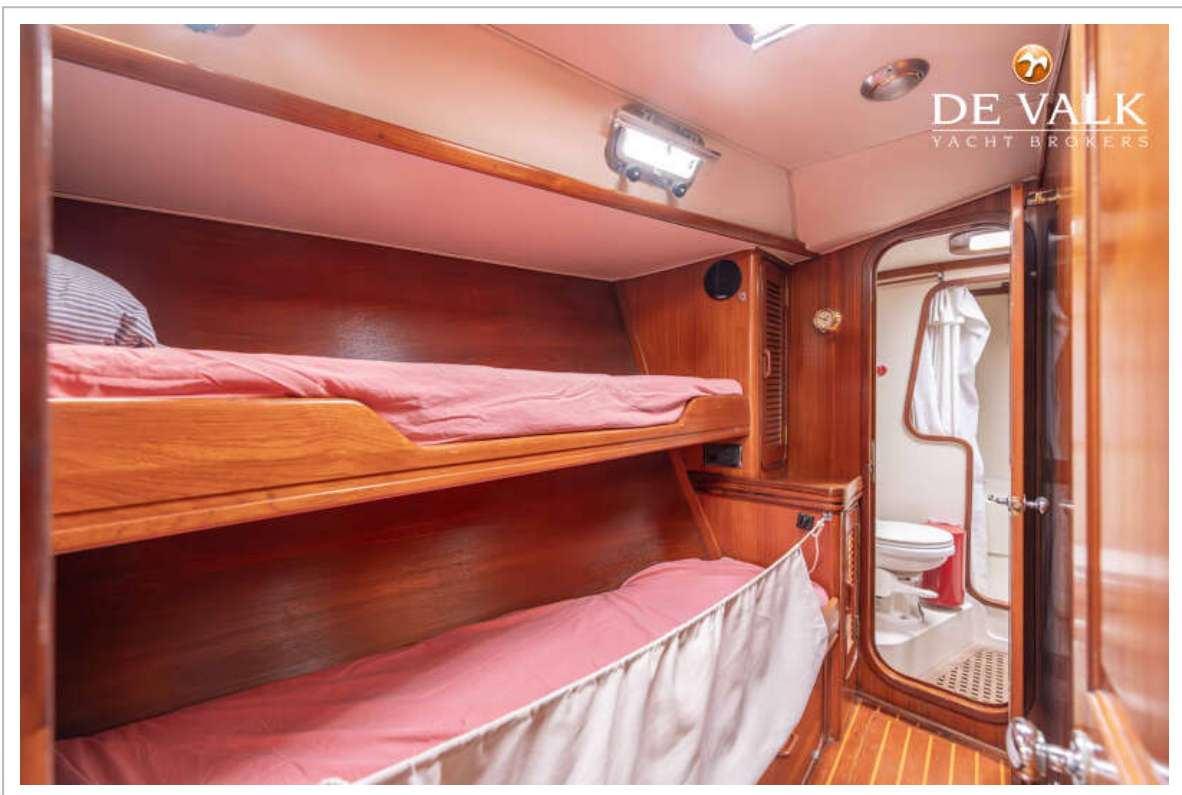




# GULFSTAR 60 MKII

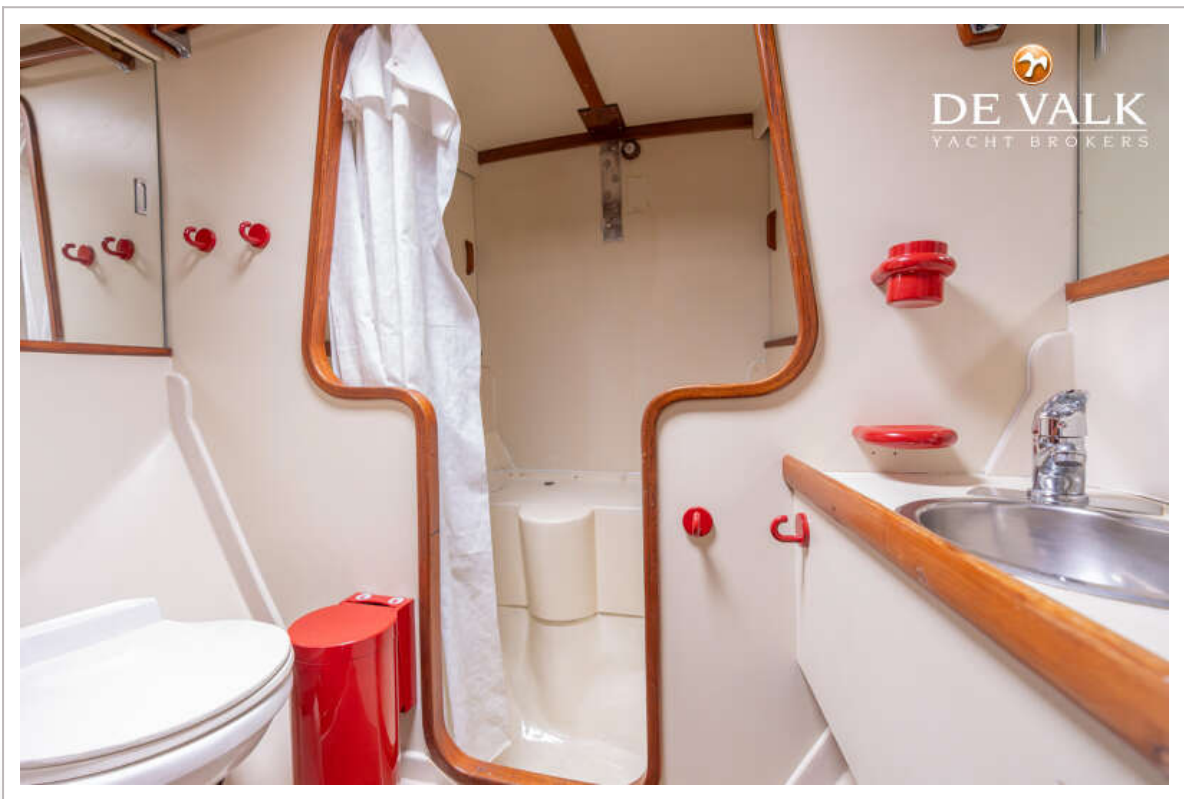


# GULFSTAR 60 MKII

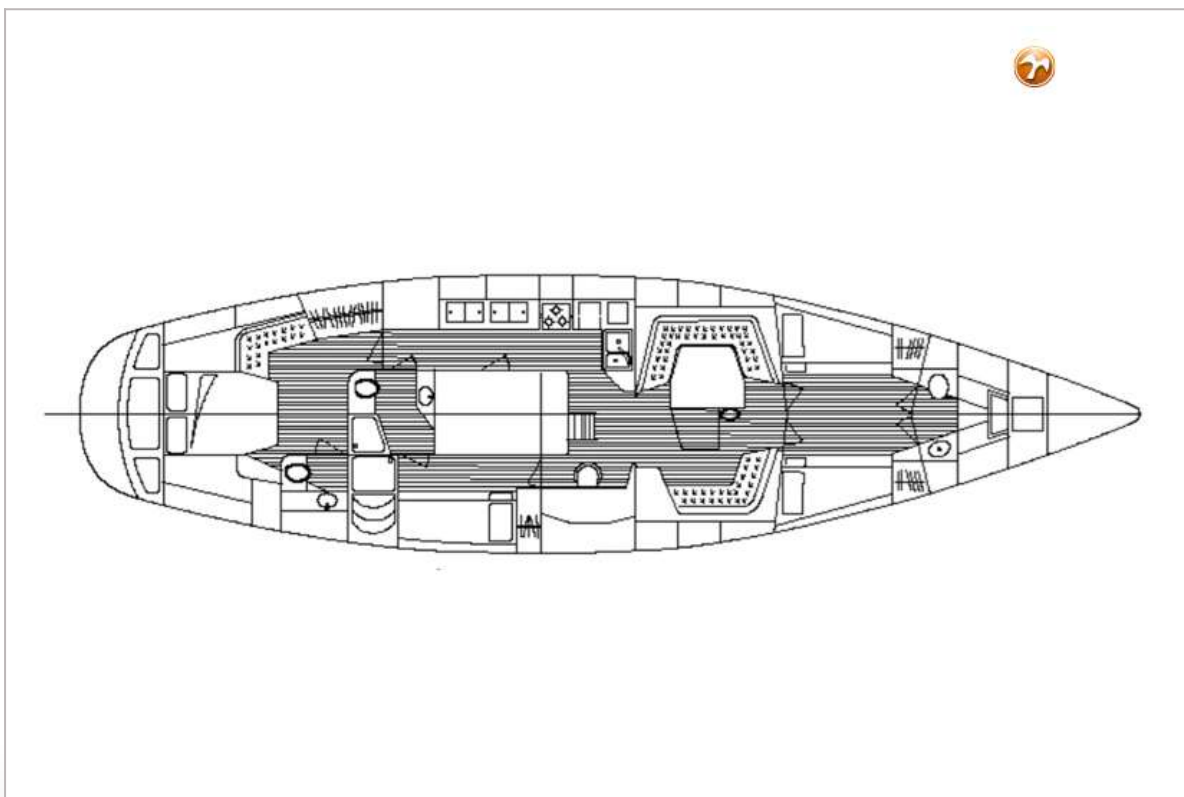




# GULFSTAR 60 MKII

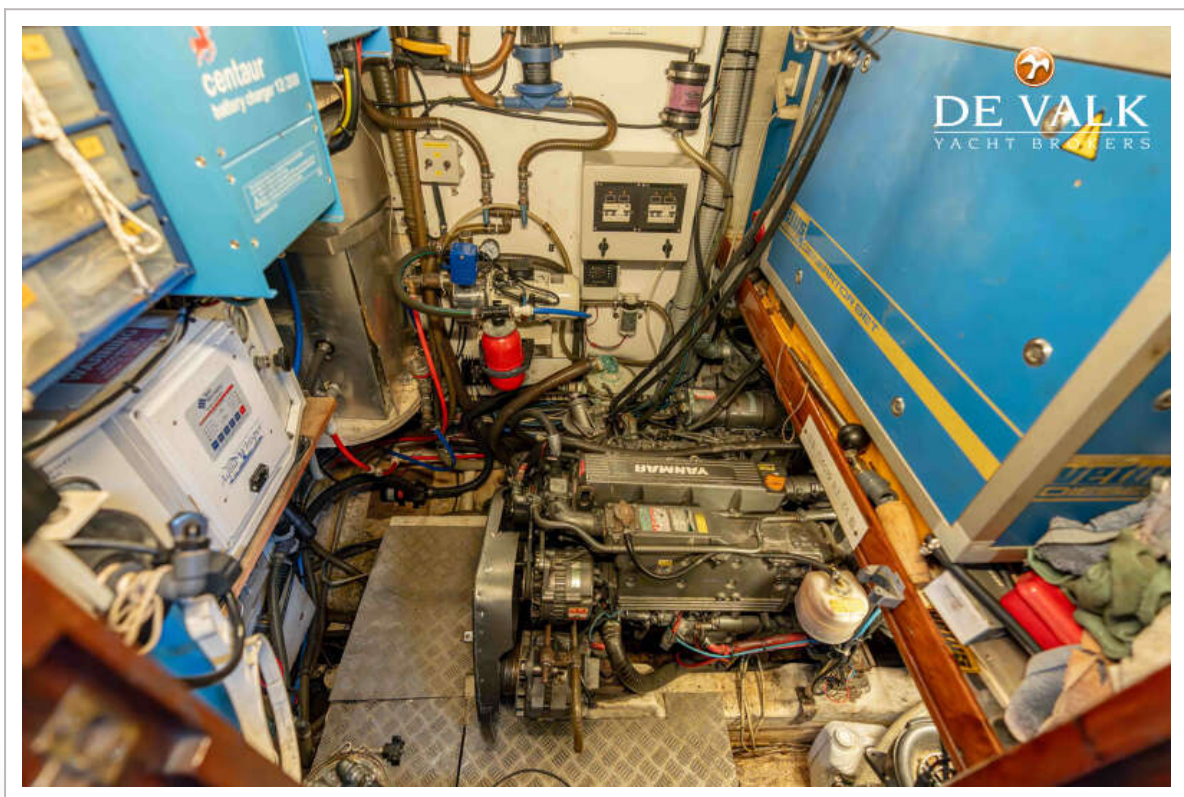
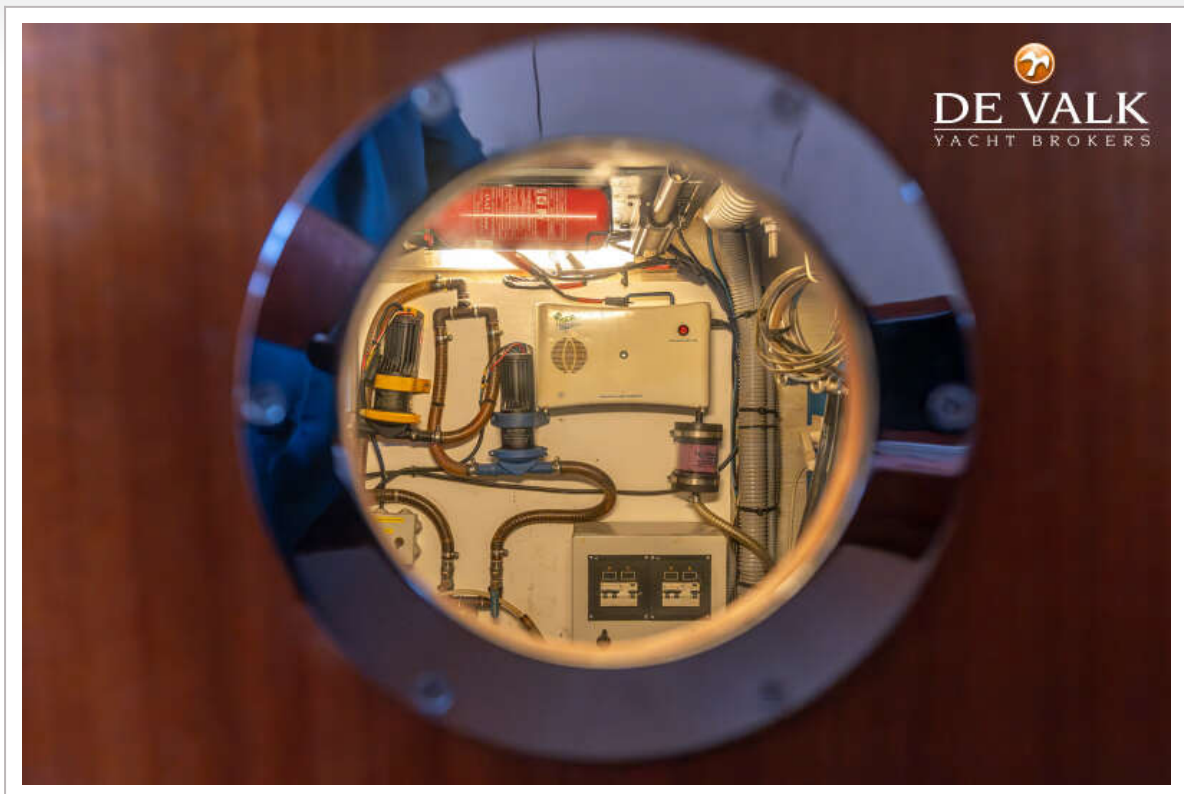


# GULFSTAR 60 MKII

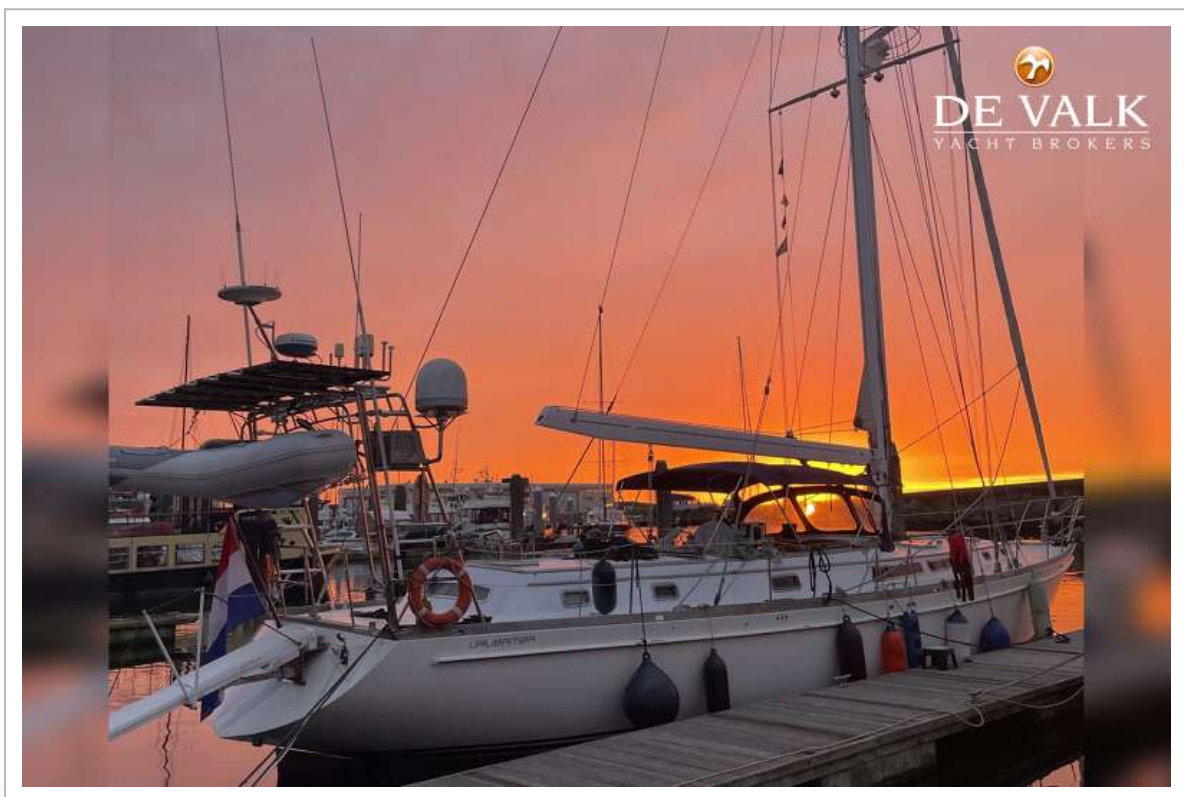
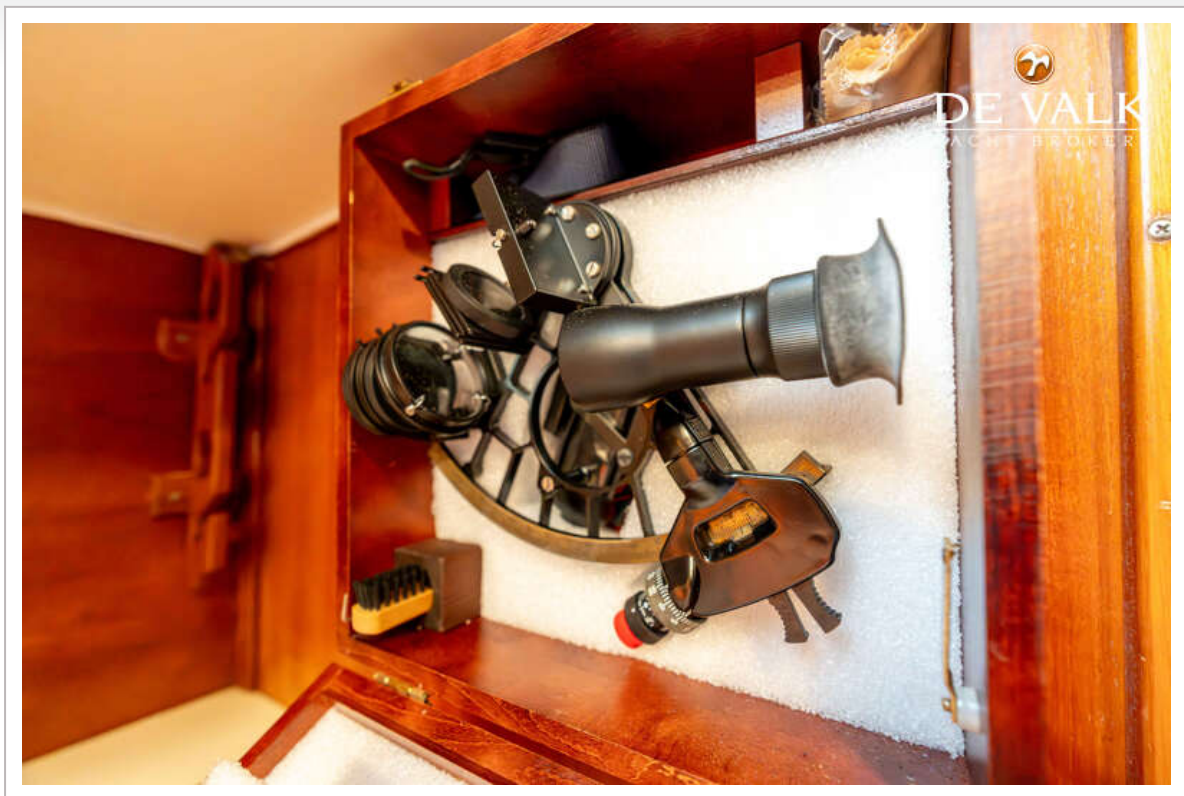




# GULFSTAR 60 MKII



# GULFSTAR 60 MKII





# GULFSTAR 60 MKII

