



DE VALK  
YACHT BROKERS



## LINSKENS SUPERCUISEER 48



DE VALK  
YACHT BROKERS

# LINSKENS SUPERCUISEUR 48

## BROKER'S COMMENTS

Linskens SuperCruiser 48 a Dutch-built steel motor yacht of 14 metres 40. A wonderfully comfortable boat with enormous interior space, partly due to the generous round seating in the front of the motor yacht. Two cabins, 1 with French bed and 1 with bunk beds. March 2024, the Linskens was completely repainted (hull and superstructure). A motor yacht in great condition and equipped with basically everything you need for a long stay on board. The Linskens is located in our covered sales marina in Sneek, where you are welcome seven days a week.

*Pieter Bosma*

## SPECIFICATIONS

<b>Dimensions</b>	14.40 x 4.45 x 1.20 (m)	<b>Builder</b>	Linskens Shipyard te Wanssum
<b>Built</b>	2008	<b>Cabins</b>	2
<b>Material</b>	Steel	<b>Berths</b>	4
<b>Engine(s)</b>	1 x Iveco N67 MNA M15.01 diesel	<b>Hp/Kw</b>	150.00 (hp), 110.40 (kw)
<b>Asking price</b>	€ 349.000 (VAT Paid)	<b>Lying</b>	contact Sneek

## CONTACT

<b>Sales office</b>	De Valk Sneek	<b>Telephone</b>	+31 (0)515 42 80 30
<b>Address</b>	Zwolsmanweg 7 8606 KC Sneek NL	<b>E-mail</b>	sneek@devalk.nl

## DISCLAIMER

These particulars are given in good faith as supplied but cannot be guaranteed.



# LINSKENS SUPERCUISEUR 48

## GENERAL

<b>Model</b>	LINSKENS SUPERCUISEUR 48
<b>Type</b>	motor yacht
<b>LOA (m)</b>	14,40
<b>Beam (m)</b>	4,45
<b>Draft (m)</b>	1,20
<b>Air draft min (m)</b>	3,50
<b>Headroom (m)</b>	2,00
<b>Year built</b>	2008
<b>Builder</b>	Linskens Shipyard te Wanssum
<b>Country</b>	The Netherlands
<b>Designer</b>	Vripack Sneek
<b>Displacement (t)</b>	23
<b>CE norm</b>	B
<b>Hull material</b>	steel
<b>Hull colour</b>	beige
<b>Hull thickness (mm)</b>	5
<b>Hull shape</b>	multi hard chine
<b>Superstructure material</b>	steel
<b>Superstructure (mm)</b>	4
<b>Deck plate thickness (mm)</b>	4
<b>Rubbing strake</b>	stainless steel
<b>Deck material</b>	steel
<b>Deck finish</b>	synthetic teak
<b>Superstructure deck finish</b>	paint
<b>Cockpit deck finish</b>	synthetic teak
<b>Antifouling (year)</b>	2024 (march)
<b>Dorades</b>	yes
<b>Window frame</b>	aluminium
<b>Window material</b>	glass Hora Dubrit
<b>Deckhatch</b>	yes



# LINSKENS SUPERCRUISER 48

<b>Portholes</b>	yes
<b>Insulation</b>	glasswool
<b>Radar arch</b>	collapsible Aluminium, with convertible top
<b>Fuel tank (litre)</b>	steel 1300
<b>Level indicator (fuel tank)</b>	Vetus
<b>Freshwater tank (litre)</b>	stainless steel 750
<b>Level indicator (freshwater)</b>	Vetus
<b>Blackwater tank (litre)</b>	stainless steel 400
<b>Level indicator (blackwater)</b>	Vetus
<b>Blackwater tank extraction</b>	deck extraction + pump
<b>Wheel steering</b>	hydraulic
<b>Outside helm position</b>	hydraulic
<b>More info on paintwork</b>	Superstructure and hull new painted in march 2024

## ACCOMMODATION

<b>Cabins</b>	2
<b>Berths</b>	4
<b>Interior</b>	mahogany
<b>Floor</b>	carpet
<b>Aft deck</b>	yes
<b>Saloon</b>	yes
<b>Headroom saloon (m)</b>	2,0
<b>Heating</b>	central heating Maritime Booster
<b>Aft Cabin</b>	yes
<b>Opening door to aft deck</b>	yes
<b>Galley</b>	yes
<b>Countertop</b>	corian 2019
<b>Sink</b>	stainless steel
<b>Cooker</b>	induction AEG 4-pits
<b>Extractor</b>	yes
<b>Microwave/oven combi</b>	Samsung



# LINSKENS SUPERCUISE 48

<b>Fridge</b>	1x Dometic & 1x Siemens with freezer
<b>Hot water system</b>	220V or central heating
<b>Owners cabin</b>	French bed
<b>Bed length (m)</b>	2,10
<b>Wardrobe</b>	hanging/drawers/shelves
<b>Bathroom</b>	shared
<b>Toilet</b>	shared
<b>Toilet system</b>	electric Tecma
<b>Wash basin</b>	in the bathroom
<b>Shower</b>	shared
<b>Guest cabin 1</b>	bunk bed
<b>Bed length (m)</b>	2,10
<b>Bathroom</b>	shared
<b>Toilet</b>	shared
<b>Shower</b>	shared

## MACHINERY

<b>No of engines</b>	1
<b>Make</b>	Iveco
<b>Type</b>	N67 MNA M15.01
<b>HP</b>	150
<b>kW</b>	110.40
<b>Fuel</b>	diesel
<b>Year installed</b>	2007
<b>Maximum speed (kn)</b>	8
<b>Cruising speed (kn)</b>	7
<b>Consumption (l/hr)</b>	5,5
<b>Engine hours</b>	1080
<b>Engine cooling system</b>	seawater
<b>Drive</b>	shaft
<b>Shaft seal</b>	yes



# LINSKENS SUPERCRAUISER 48

<b>Engine controls</b>	electrical
<b>Gearbox</b>	Twin Disc TM170 2.5
<b>Bowthruster</b>	electric Vetus 125 Kgf
<b>Sternthruster</b>	electric Vetus 125 Kgf
<b>Exhaust</b>	watercooled
<b>Thrust bearing</b>	yes
<b>Propeller type</b>	fixed
<b>Propeller blades</b>	4
<b>Propeller shaft material</b>	stainless steel 45mm
<b>Shaft lubrication</b>	water
<b>Manual bilge pump</b>	yes
<b>Electric bilge pump</b>	yes
<b>Electrical installation</b>	12V /24V /230V
<b>Generator</b>	silent separator Vetus GLS 14 SK / 14 KVA
<b>Running hours generator</b>	Ca 120
<b>Batteries</b>	10 x
<b>Start battery</b>	2x Cyrix
<b>Service battery</b>	4x Victron AGM 12V / 220Ah
<b>Bowthruster battery</b>	2x Optima Yellow
<b>Sternthruster battery</b>	2x Optima Yellow
<b>Battery monitor</b>	Victron Energy BMV-501
<b>Battery charger/inverter</b>	Victron Energy Multiplus 24/3000/70
<b>Shorepower</b>	with cable
<b>Extra info</b>	Micro Commander system.

## NAVIGATION

<b>Electric compass</b>	Raymarine C80
<b>Log</b>	Raymarine C80
<b>VHF</b>	Raymarine 240VHF
<b>Rudder angle indicator</b>	Raymarine ST60+
<b>Plotter/GPS</b>	Raymarine C80



Navigation lights yes

## EQUIPMENT

Fixed windscreen	yes
Sprayhood	Convertible top (2021)
Bimini	yes
Cockpit cushions	yes
Cockpit chairs	yes
Bathing platform	yes
Boarding ladder	stainless steel
Transom door	2x
Anchor	yes
Anchor chain	RVS ca. 20 mtr
Anchor 2	RVS 15kg
Windlass	electrical Lofrans Project 1000
Deck wash	yes
Sea railing	yes
Grab rail (superstructure)	stainless steel
Railing side opening gates	yes
Wiper	3x Exalto
Horn	electric
Fenders	yes
Mooring lines	yes
TV	Panasonic flatscreen on lift
TV receiver	DigiTenne
Radio-cd player	JVC- Radio Data System
Cockpit speakers	yes
Speakers in salon	yes
Fire extinguisher	yes



# LINSKENS SUPERCUISE 48





# LINSKENS SUPERCUISE 48



# LINSKENS SUPERCUISE 48

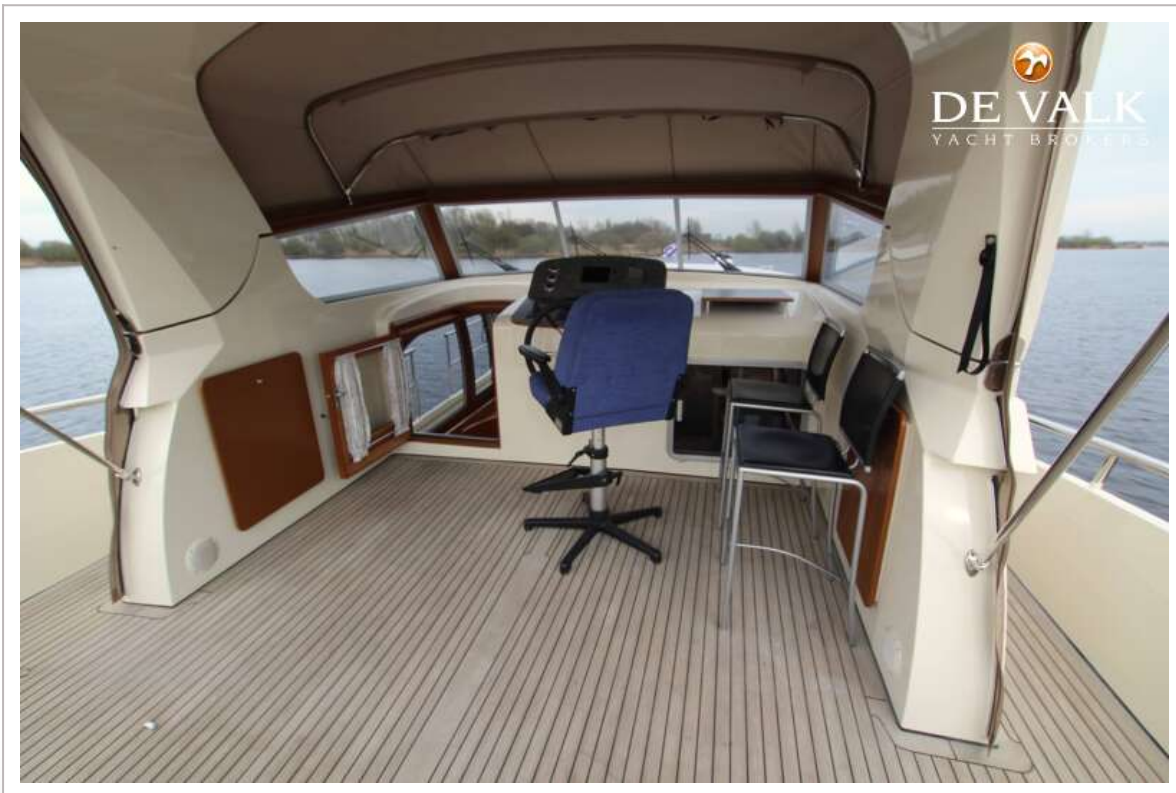


# LINSKENS SUPERCUISE 48





# LINSKENS SUPERCUISE 48



# LINSKENS SUPERCRUISER 48





# LINSKENS SUPERCUISE 48



# LINSKENS SUPERCUISE 48





# LINSKENS SUPERCUISE 48





# LINSKENS SUPERCUISE 48



# LINSKENS SUPERCUISE 48

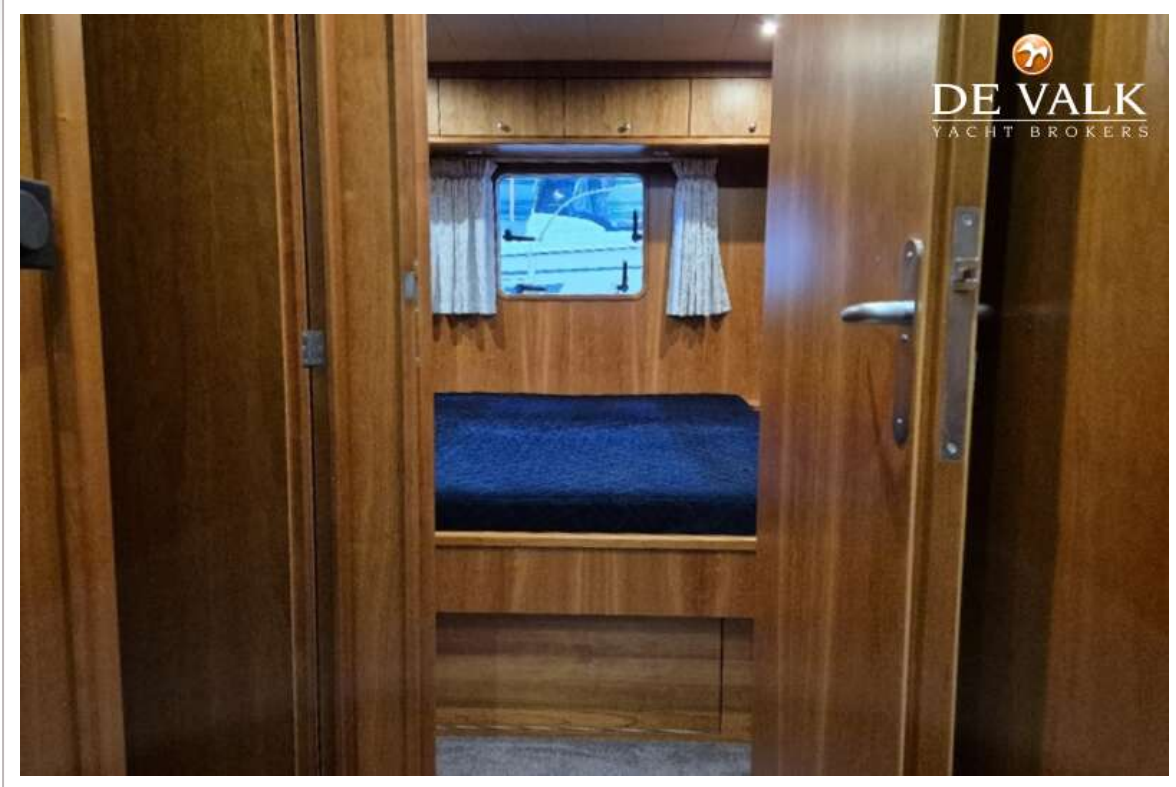


# LINSKENS SUPERCUISE 48





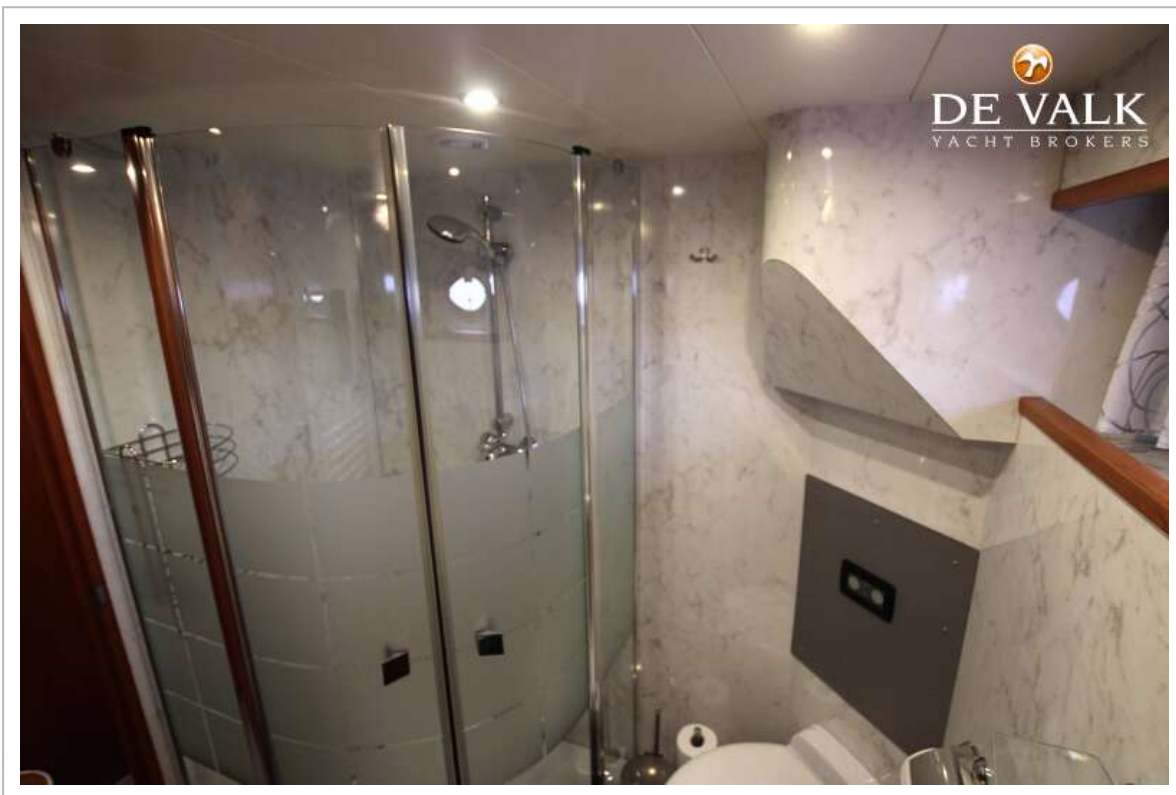
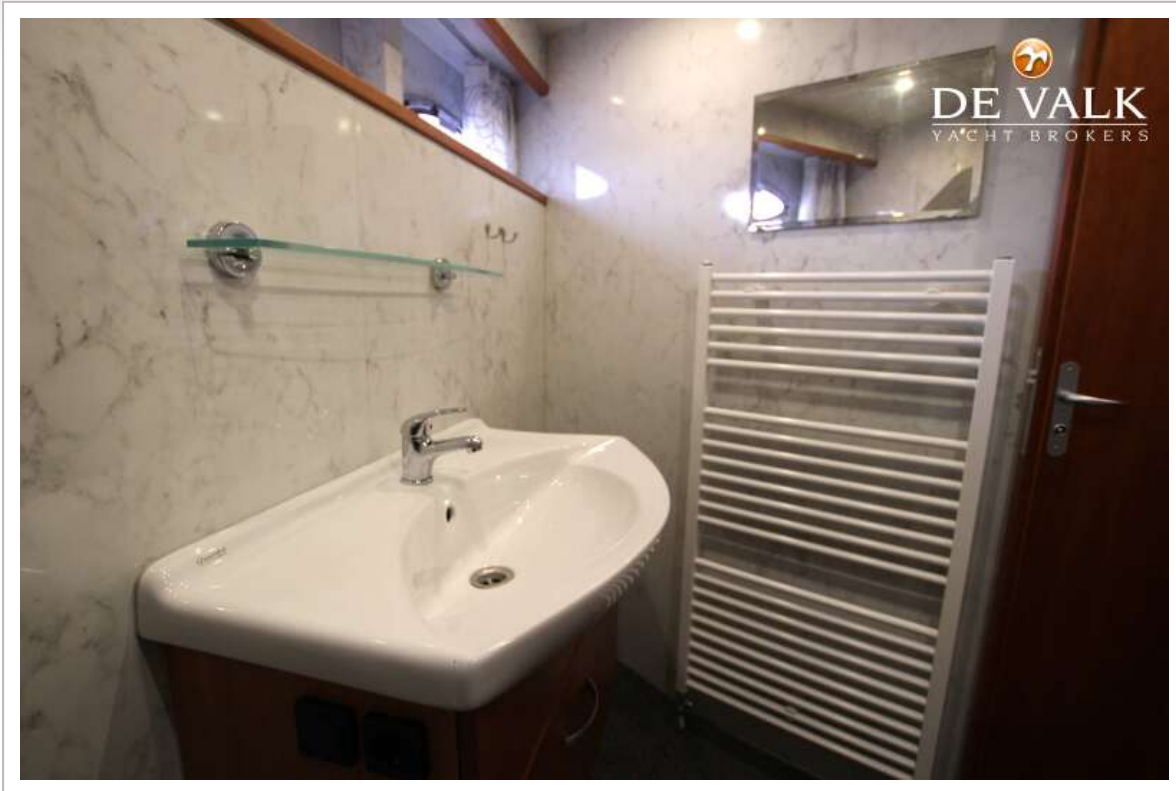
# LINSKENS SUPERCUISE 48



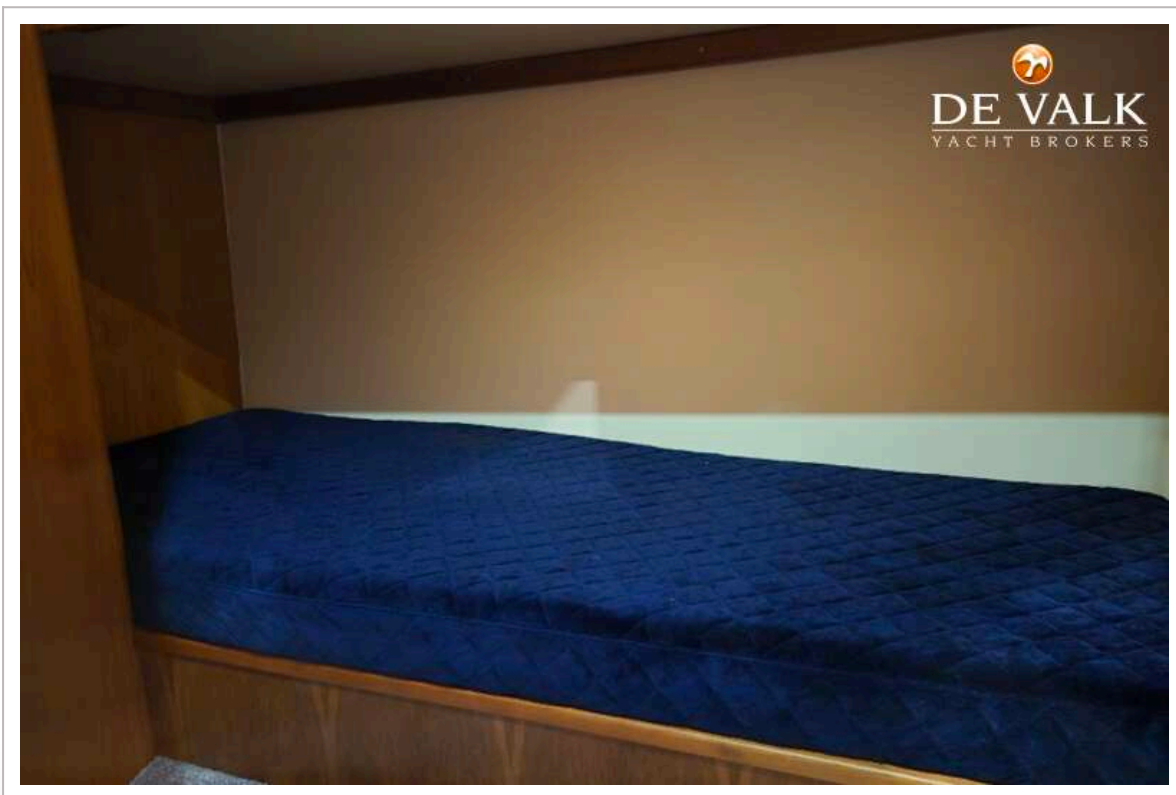
# LINSKENS SUPERCUISE 48







# LINSKENS SUPERCUISE 48





# LINSKENS SUPERCUISEUR 48

