



DE VALK  
YACHT BROKERS



## FAIRLINE TARGA 48



DE VALK  
YACHT BROKERS

# FAIRLINE TARGA 48

## BROKER'S COMMENTS

Designed as a true Med style express cruiser, the Fairline Targa 48 proved to be popular all over Europe. Because of her slender beam her seakeeping is unrivalled in this class, yet she still offers 3 cabins and 2 bathrooms and a comfortable saloon. Outside you can enjoy the sun on two seating areas and a large sundeck fore and aft. There is even a tender garage for a small dinghy. With her shaft driven engines and bow and stern thruster she is a delight to handle. This Fairline Targa 48 has had lots of upgraded over the last 8 years. Come and see her for yourself at De Valk Zeeland!

*Nick Lanting*

## SPECIFICATIONS

<b>Dimensions</b>	15.20 x 3.94 x 1.00 (m)	<b>Builder</b>	Fairline Boats
<b>Built</b>	1996	<b>Cabins</b>	3
<b>Material</b>	GRP	<b>Berths</b>	7
<b>Engine(s)</b>	2 x Caterpillar 3126 diesel	<b>Hp/Kw</b>	2 x 426.00 (hp), 313.54 (kw)
<b>Asking price</b>	€ 199.000 (VAT Paid)	<b>Lying</b>	elsewhere / Not at sales office

## CONTACT

<b>Sales office</b>	De Valk Sint Annaland B.V.	<b>Telephone</b>	+31 (0)166 601 000
<b>Address</b>	Koelhuisweg 4 4697 RM Sint Annaland NL	<b>E-mail</b>	sintannaland@devalk.nl

## DISCLAIMER

These particulars are given in good faith as supplied but cannot be guaranteed.



# FAIRLINE TARGA 48

## GENERAL

Model	FAIRLINE TARGA 48
Type	motor yacht
LOA (m)	15,20
Beam (m)	3,94
Draft (m)	1,00
Air draft (m)	3,25
Headroom (m)	1,95
Year built	1996
Launched	1997
Builder	Fairline Boats
Country	United Kingdom
Designer	Bernard Olesinski / Fairline Design Team
Displacement (t)	11,2
CE norm	B
Hull material	GRP
Hull colour	blue Painted 03/2019
Hull shape	deep-V
Superstructure material	GRP
Rubbing strake	stainless steel With rubber insert
Deck material	GRP
Deck finish	non-skid moulded in
Superstructure deck finish	non-skid moulded in
Cockpit deck finish	teak Renewed 08/2017, also on bathing platform
Antifouling (year)	2023
Window frame	GRP
Window material	tempered glass
Deckhatch	2 x
Portholes	stainless steel
Radar arch	non collapsible
Fuel tank (litre)	2 x 681



# FAIRLINE TARGA 48

Level indicator (fuel tank)	yes
Freshwater tank (litre)	454
Level indicator (freshwater)	yes
Blackwater tank extraction	yes
Outside helm position	powersteer
More info on paintwork	Hull painted 03/2019

## ACCOMMODATION

Cabins	3
Berths	7
Interior	cherry American Cherry
Floor	carpet
Open cockpit	yes
Saloon	yes
Headroom saloon (m)	yes
Heating	Through air conditioning
Air-conditioning	reverse cycle airco
Chart table	yes
Sliding door to cockpit	yes
Galley	yes
Countertop	plastic
Sink	stainless steel
Cooker	electric 2-burner
Microwave/oven combi	Sharp Jet Convection & Grill 850 W
Fridge	IndelB CR100 (2021)
Hot water system	220V + engine
Water pressure system	electrical
Owners cabin	French bed Forward, headroom 1.85m
Bed length (m)	2.00 x 1.50
Wardrobe	hanging/drawers/shelves
Bathroom	en suite



# FAIRLINE TARGA 48

Toilet	In the bathroom
Toilet system	electric
Wash basin	in the bathroom
Shower	In the bathroom
Extra info	Bed surrounds retrimmed 12/2022
Guest cabin 1	twin single Port aft
Bed length (m)	1.95 x 70 (2 x)
Wardrobe	hanging and shelves
Bathroom	separate
Toilet	In the bathroom
Toilet system	electric
Wash basin	in the bathroom
Shower	In the bathroom
Extra info	Bed surrounds retrimmed 12/2022
Guest cabin 2	twin single Starboard aft
Bed length (m)	1.95 x 70 (2 x)
Wardrobe	hanging and shelves
Extra info	Bed surrounds retrimmed 12/2022
Wet bar	In the cockpit with sink, fridge (2021) and griddle
Tender garage	yes

## MACHINERY

No of engines	2
Make	Caterpillar
Type	3126
HP	426
kW	313.54
Fuel	diesel
Maximum speed (kn)	30
Cruising speed (kn)	25
Engine hours	1905



# FAIRLINE TARGA 48

Engine cooling system	freshwater heat exchanger
Drive	shaft
Shaft seal	yes
Engine controls	bowden cable
Gearbox	hydraulic
Bowthruster	electric
Sternthruster	electric
Exhaust	dry
Propeller type	fixed
Propeller blades	4
Propeller shaft material	stainless steel
Shaft lubrication	water
Manual bilge pump	yes
Electric bilge pump	yes
Bilge alarm	yes
Electrical installation	12 V, 230 V
Generator	silent separator Fisher Panda Panda 5000i PMS NEO 5kVA (04/2020)
Batteries	yes
Start battery	yes
Service battery	yes
Sternthruster battery	yes
Battery charger/inverter	Victron Quattro 12 V / 3000 VA / 120 A
Diode battery combiners	yes
Shorepower	with cable
Trimtabs	yes
Extra info	Turbos refurbished 10/2023
Extra info	Last engine service 11/2023
Extra info	All injectors have been replaced 04/2024

## NAVIGATION



Compass	yes
Electric compass	In autopilot
Depth sounder/log	yes
Rudder angle indicator	yes
Radar/plotter	Raymarine Axiom 9 (07/2023)
Navigation lights	yes
Searchlight	yes

## EQUIPMENT

Fixed windscreen	yes
Cockpit cover	New 04/2022
Cockpit cushions	New 04/2022
Cockpit table	yes
Bathing platform	yes
Boarding ladder	stainless steel
Transom door	yes
Gangway	yes
Deck shower	yes
Anchor	Danforth
Anchor chain	yes
Windlass	electrical
Capstan	On windlass
Deck wash	In anchor locker
Sea railing	stainless steel
Grab rail (superstructure)	stainless steel
Pulpit	yes
Wiper	yes
Horn	yes
Fenders	yes
Mooring lines	yes
TV	yes



# FAIRLINE TARGA 48

Radio	Kenwood KMM BT502DAB
Cockpit speakers	5 x
Speakers in salon	2 x
Fire extinguisher	yes
Extinguisher in engine room	yes
Auto extinguisher system	yes
Extra info	Sunbed cushions fore and aft new 04/2022





# FAIRLINE TARGA 48



# FAIRLINE TARGA 48

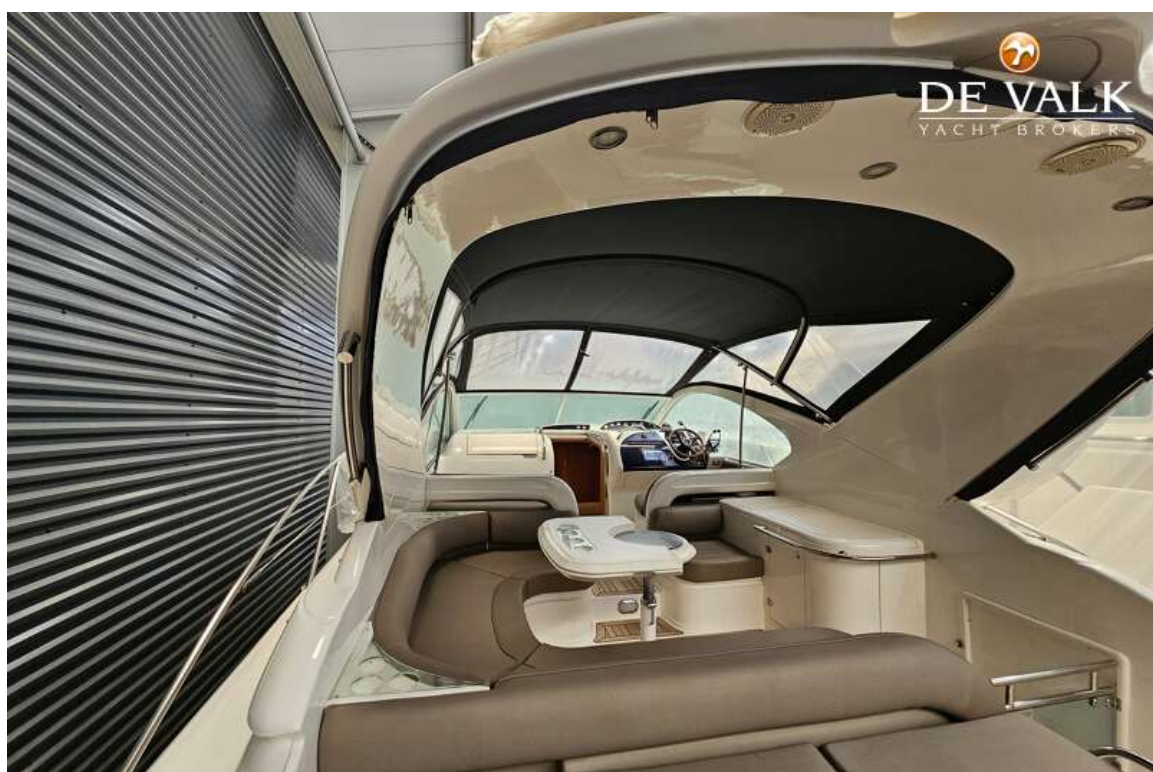


# FAIRLINE TARGA 48





# FAIRLINE TARGA 48



## FAIRLINE TARGA 48





## FAIRLINE TARGA 48

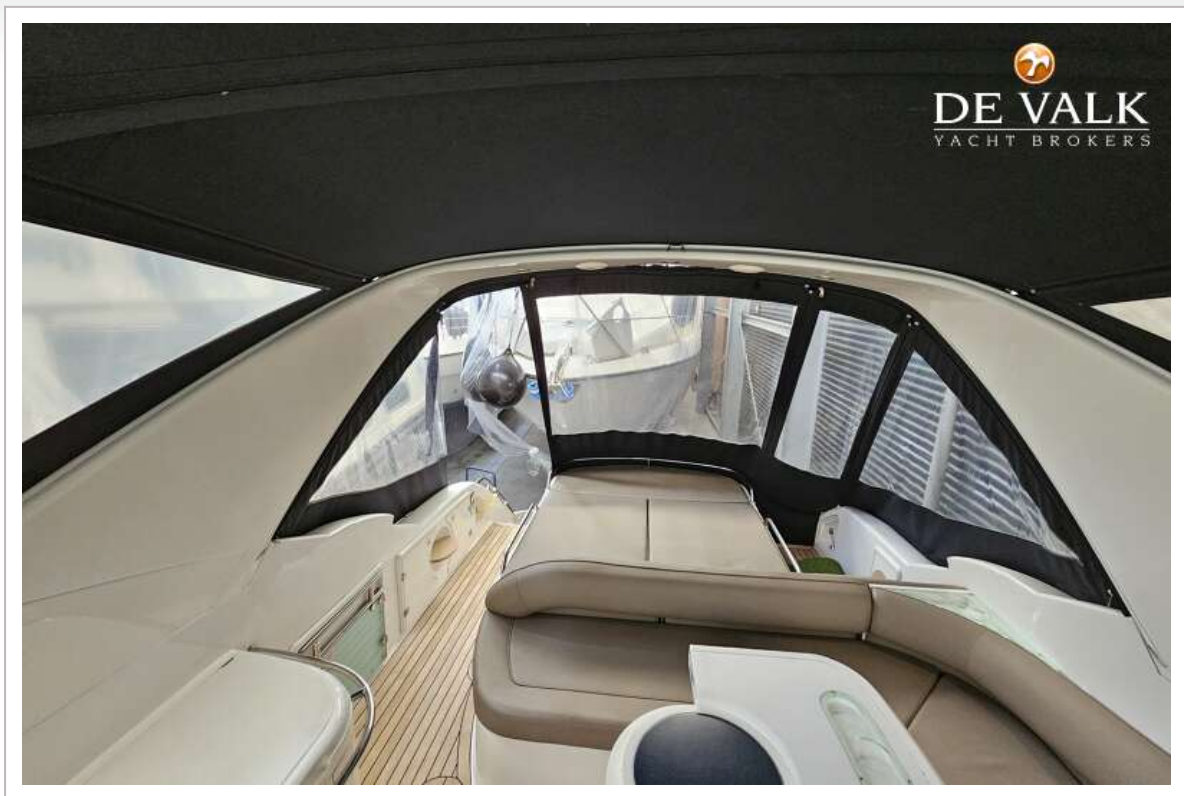


## FAIRLINE TARGA 48



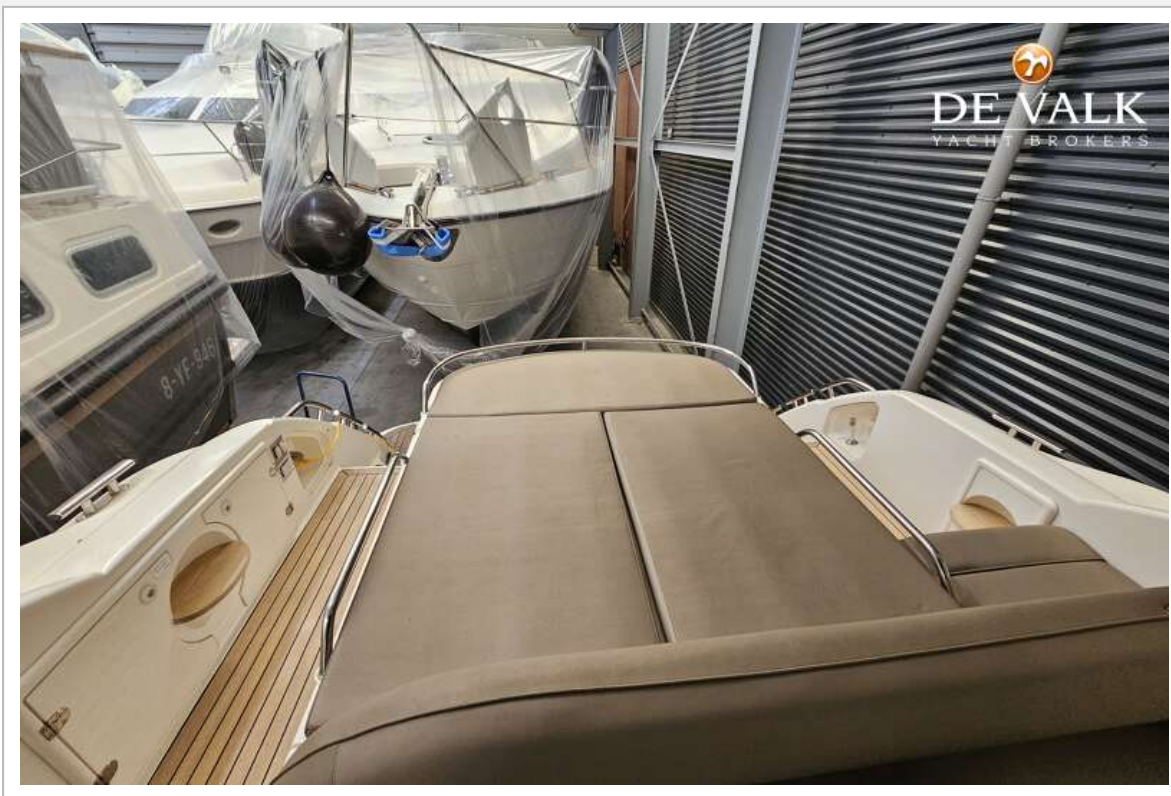


# FAIRLINE TARGA 48

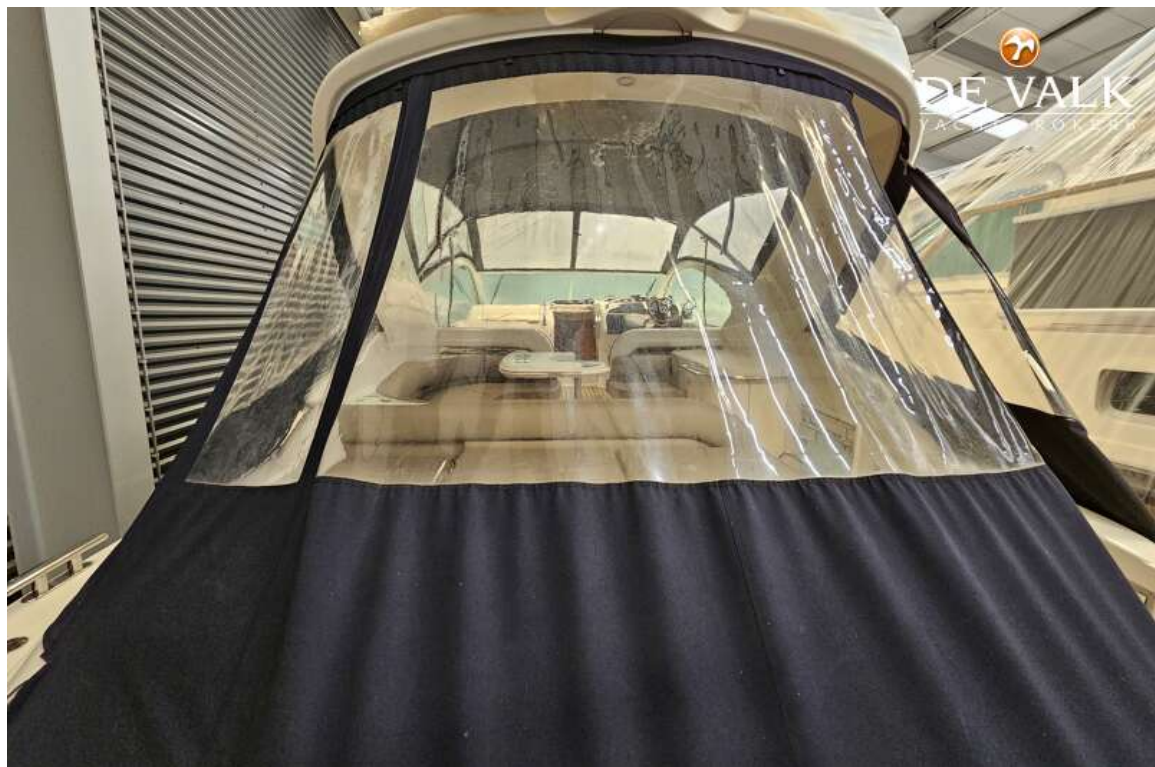




## FAIRLINE TARGA 48

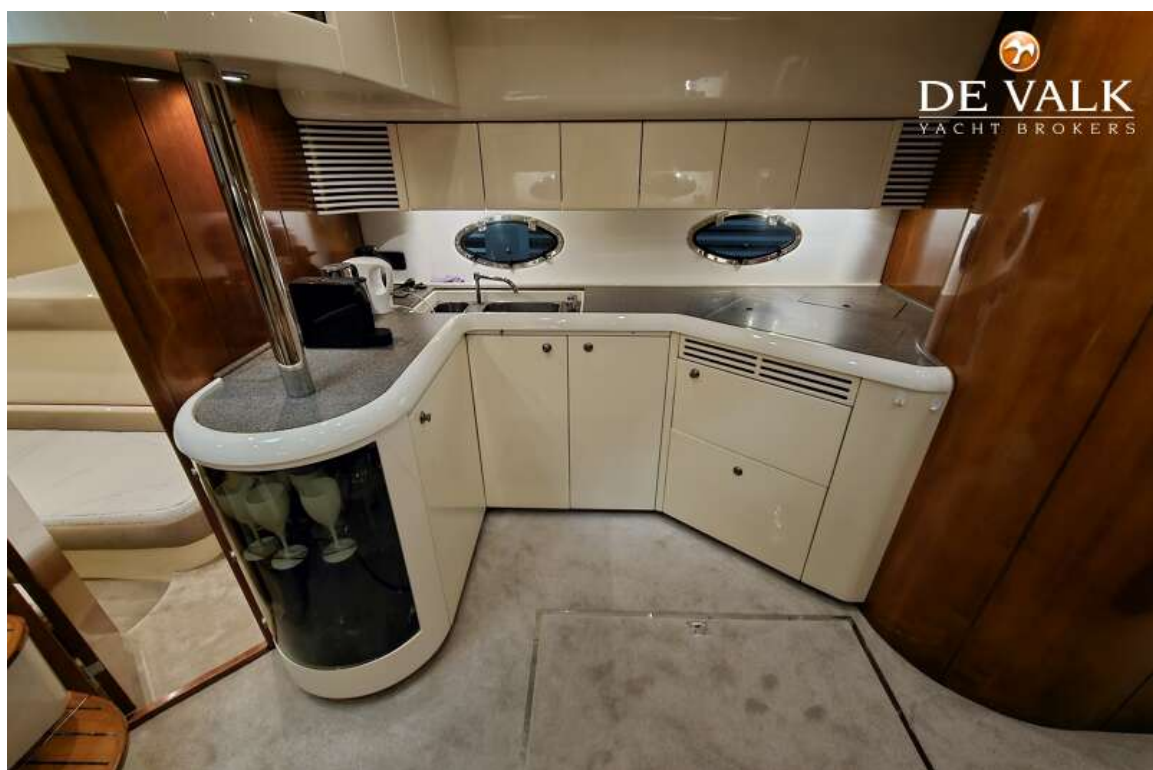


## FAIRLINE TARGA 48

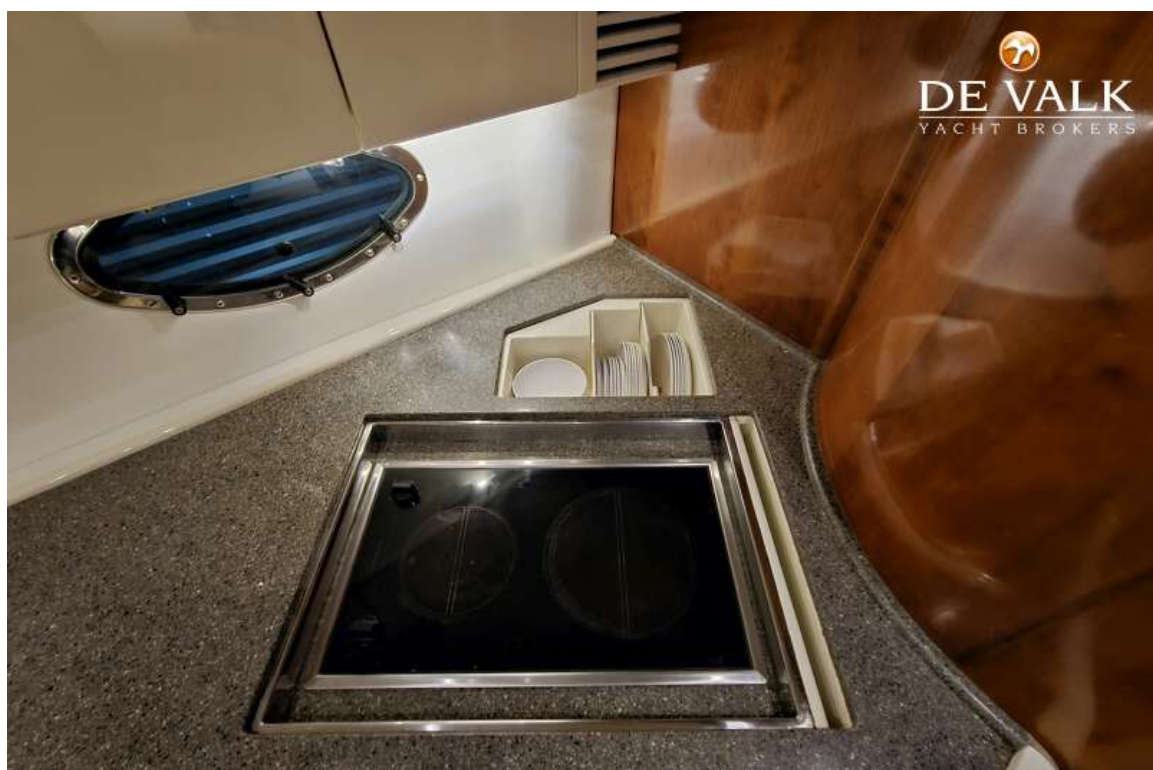




# FAIRLINE TARGA 48

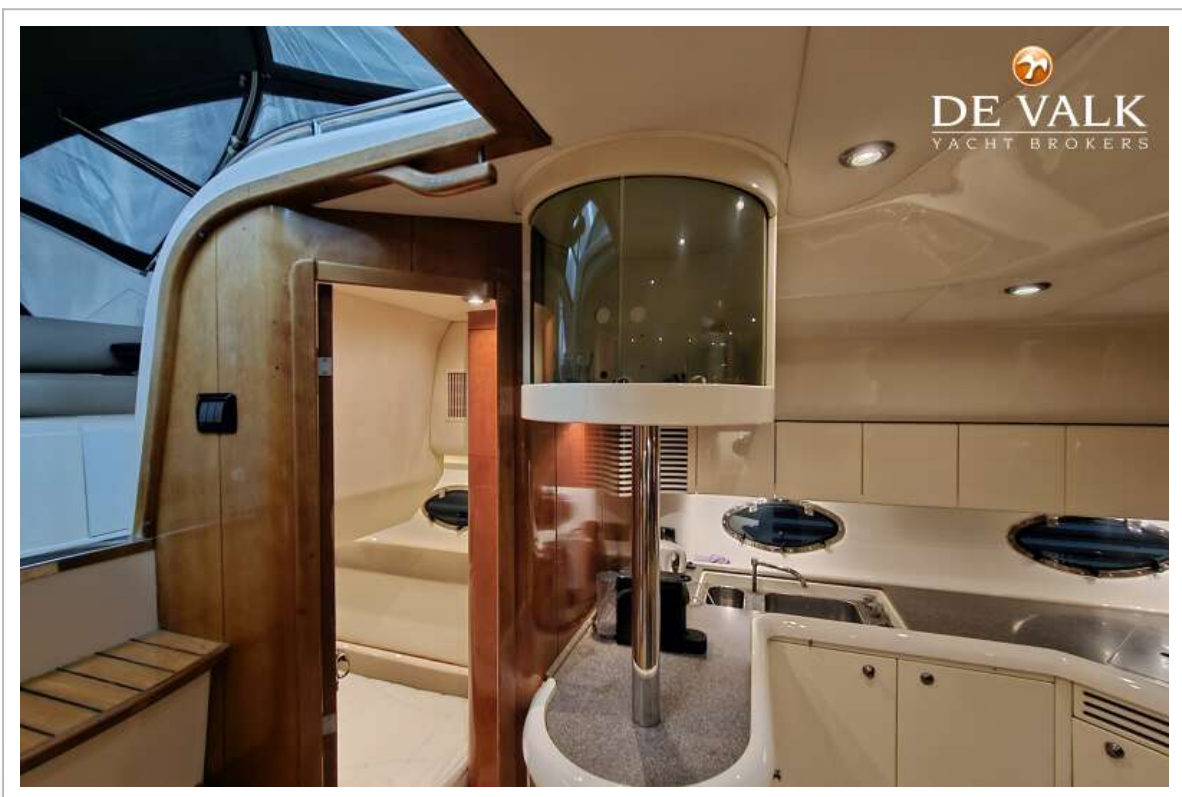
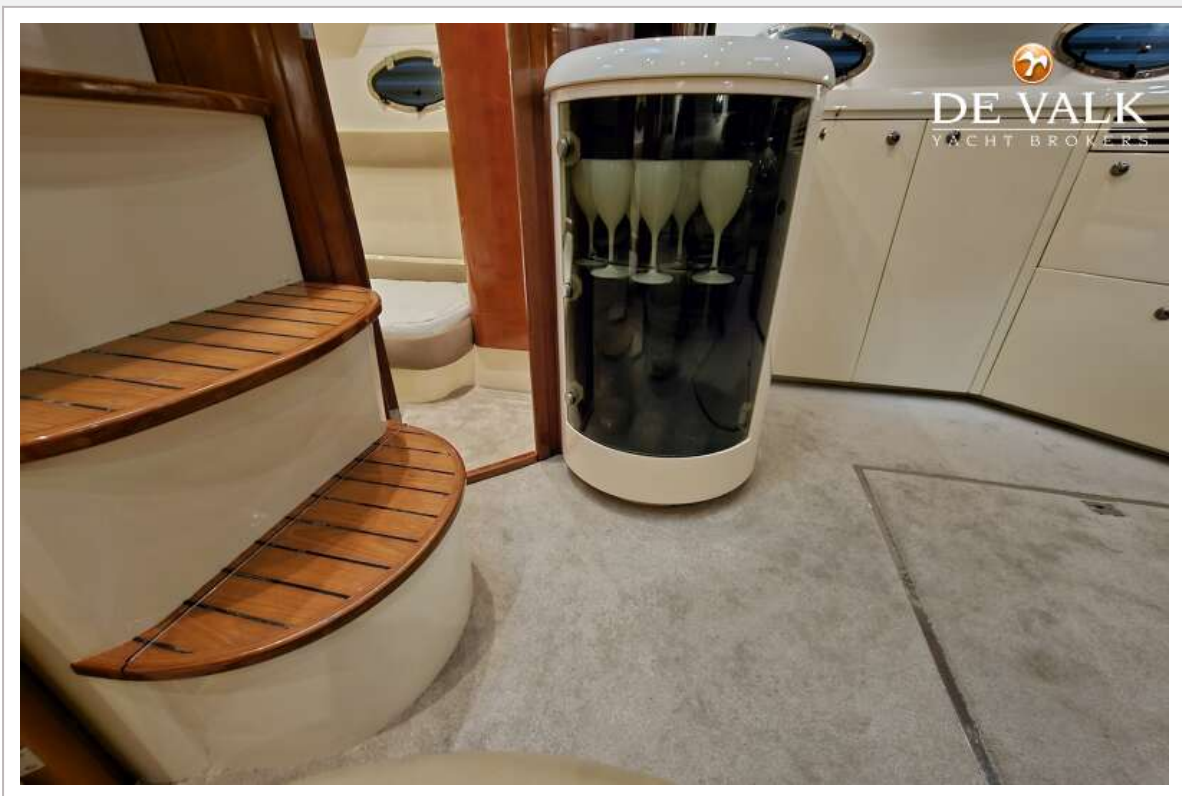


## FAIRLINE TARGA 48

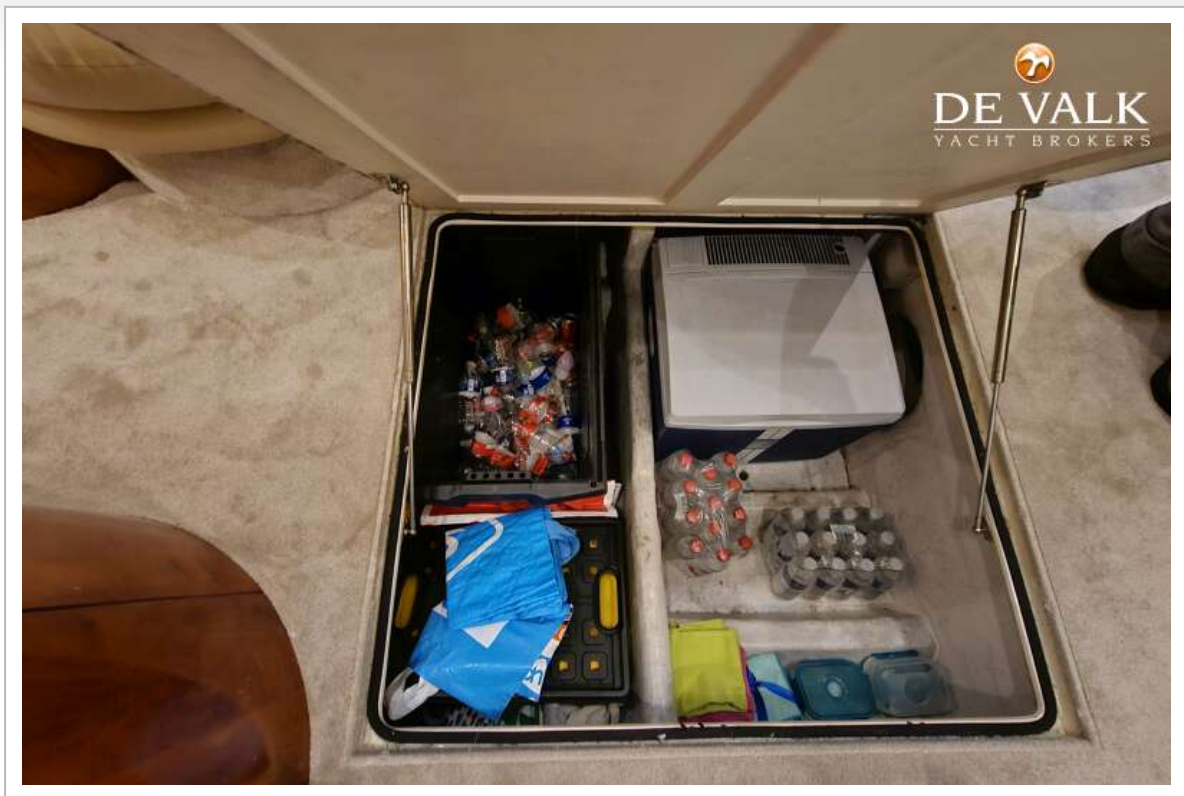




## FAIRLINE TARGA 48

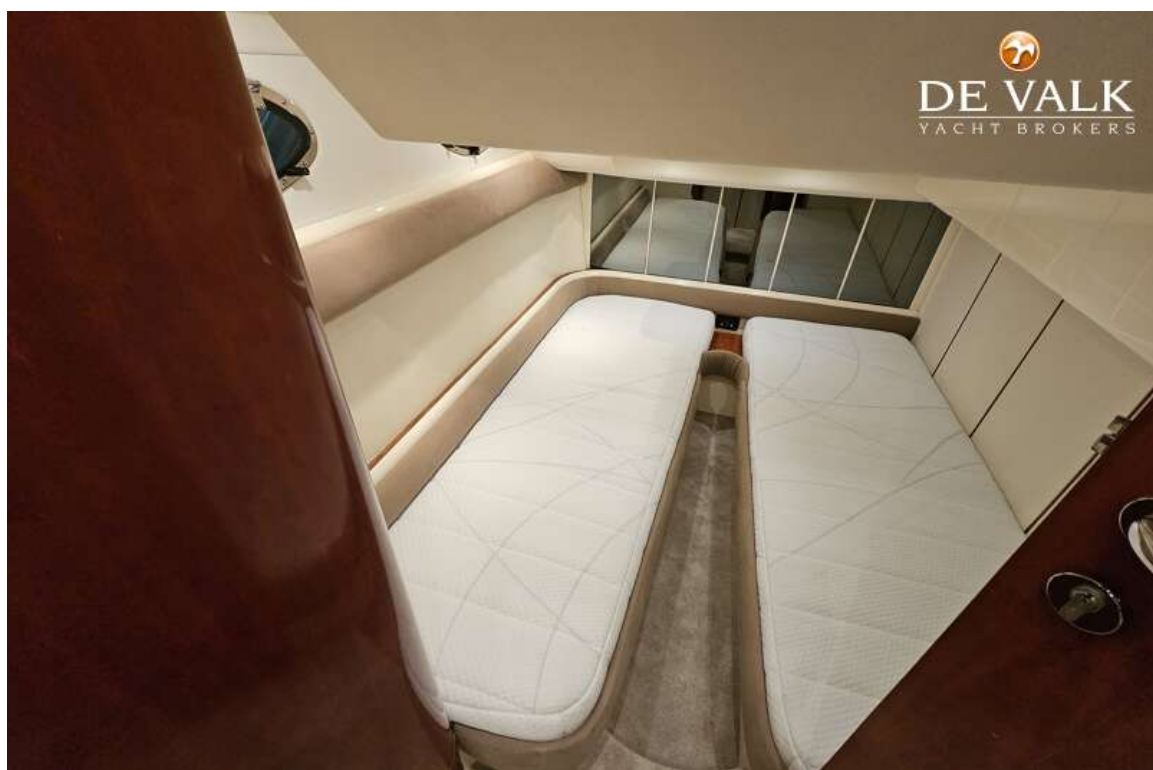


## FAIRLINE TARGA 48





# FAIRLINE TARGA 48



## FAIRLINE TARGA 48

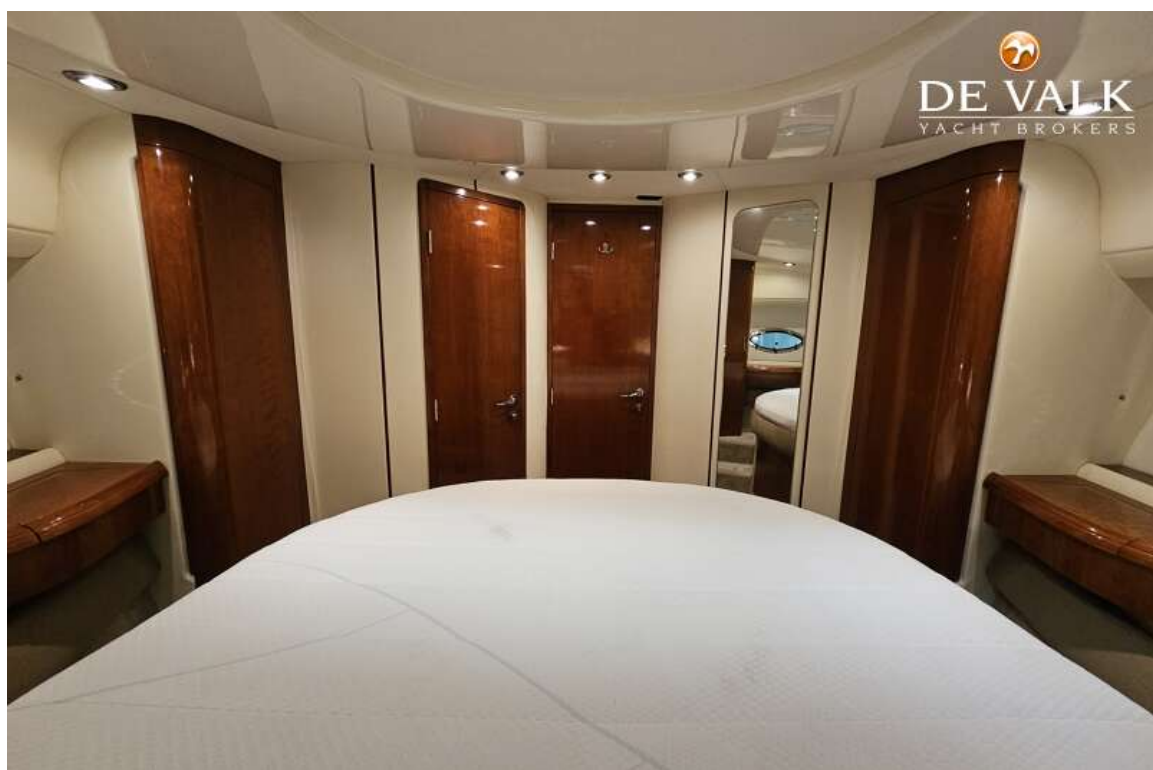




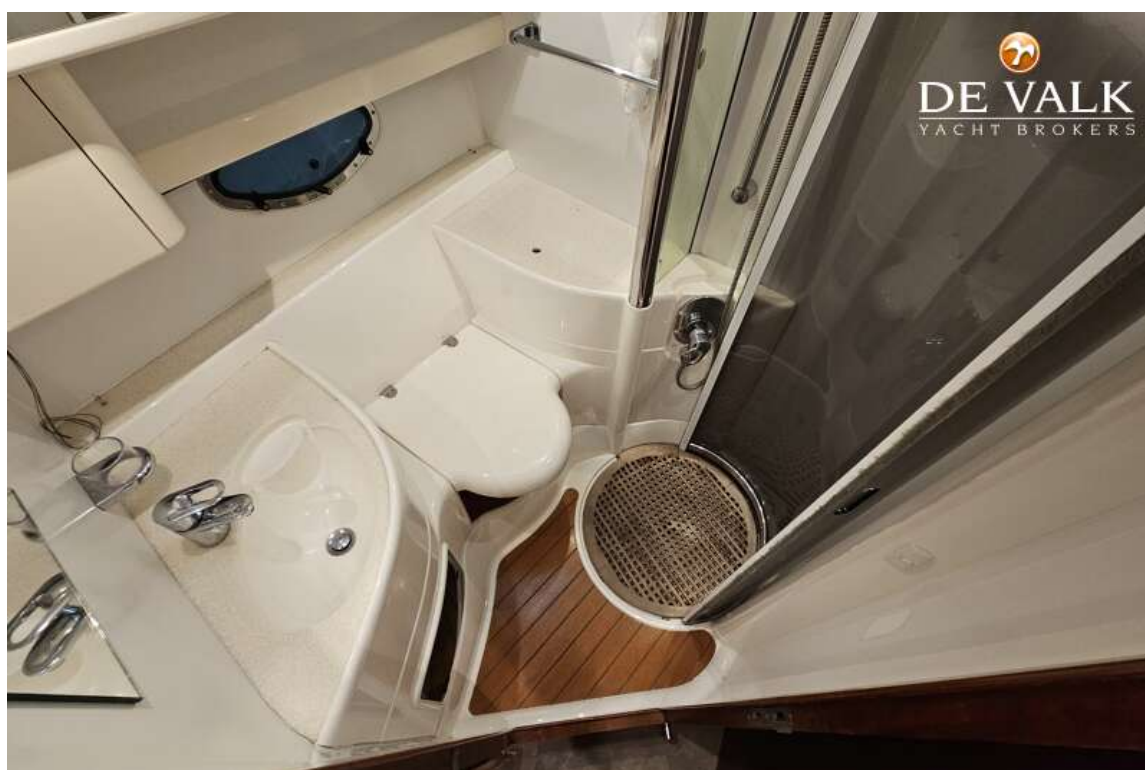
## FAIRLINE TARGA 48



# FAIRLINE TARGA 48



# FAIRLINE TARGA 48





## FAIRLINE TARGA 48

