



DE VALK
YACHT BROKERS



BURMESTER SEEFahrTKREUZER 50M2 WINDFALL



DE VALK
YACHT BROKERS

BURMESTER SEEFAHRTKREUZER 50M2 WINDFALL

BROKER'S COMMENTS

The Burmester is a timeless 50-foot classic sailing yacht from the renowned Burmester yard designed by Abeking & Rasmussen, celebrated for their craftsmanship, precision engineering, and elegance afloat. Built in fine mahogany over oak frames, she represents the golden age of yacht building a perfect balance of beauty, performance, and seaworthiness. Lovingly maintained and carefully refitted between 1990 and 2000, The Burmester retains her original charm while benefiting from thoughtful modern upgrades.

Hans Visser

SPECIFICATIONS

| | | | |
|---------------------|-------------------------|----------------|---------------------------------|
| Dimensions | 12.12 x 2.65 x 1.85 (m) | Builder | Burmester |
| Built | 1937 | Cabins | 1 |
| Material | Wood | Berths | 5 |
| Engine(s) | 1 x Nanni 3-75HE diesel | Hp/Kw | 23.00 (hp), 16.93 (kw) |
| Asking price | € 78.500 (VAT Exempt) | Lying | elsewhere / Not at sales office |

CONTACT

| | | | |
|---------------------|---|------------------|-----------------------|
| Sales office | De Valk Hindeloopen B.V. | Telephone | +31 514 52 40 00 |
| Address | Oosterstrand 1 8713 JS Hindeloopen NL | E-mail | hindeloopen@devalk.nl |

DISCLAIMER

These particulars are given in good faith as supplied but cannot be guaranteed.



BURMESTER SEEFAHRTKREUZER 50M2 WINDFALL

GENERAL

| | |
|-------------------------|---|
| Model | BURMESTER SEEFAHRTKREUZER 50M2 WINDFALL |
| Type | sailing yacht |
| LOA (m) | 12,12 |
| Beam (m) | 2,65 |
| Draft (m) | 1,85 |
| Air draft (m) | 15,00 |
| Headroom (m) | 1,75 |
| Year built | 1937 |
| Builder | Burmester |
| Country | Germany |
| Designer | Abbeking & Rasmussen, Abrecht |
| Displacement (t) | 7,5 |
| Ballast (tonnes) | cast iron 3,5 |
| CE norm | NA |
| Hull material | wood |
| Hull colour | white |
| Hull shape | S-bilged |
| Keel type | long keel |
| Superstructure material | wood Honduras mahogany |
| Rubbing strake | stainless steel |
| Deck material | Waterproof Plywood |
| Deck finish | teak 7 mm |
| Cockpit deck finish | teak |
| Antifouling (year) | 2025 |
| Dorades | 2x |
| Window frame | stainless steel |
| Deckhatch | 1 |
| Fuel tank (litre) | polyethylene 40 |
| Freshwater tank (litre) | 50 |
| Greywater tank (litre) | yes |



BURMESTER SEEFARTKREUZER 50M2 WINDFALL

| | |
|------------------------|--|
| Tiller | yes |
| More info on hull | Hull covered with one 300 G 2D in epoxy & double below waterline |
| More info on paintwork | SP systems |
| Extra info | New rudder with bearing on the keel, |

ACCOMMODATION

| | |
|-----------------------|---------------------------|
| Cabins | 1 |
| Berths | 5 |
| Interior | mahogany Zipo |
| Layout | Classic |
| Floor | wood |
| Saloon | yes |
| Headroom saloon (m) | Up to 1,88 under skylight |
| Navigation center | yes |
| Convertible berth | 2 x |
| Galley | yes |
| Countertop | wood |
| Sink | stainless steel |
| Fridge | yes |
| Water pressure system | electrical |
| Owners cabin | v-bed |
| Bed length (m) | 200 |
| Wardrobe | hanging and shelves |
| Bathroom | shared |
| Toilet | shared |
| Toilet system | manual |
| Wash basin | in the bathroom |
| Guest cabin 1 | single bed Open to salon |
| Bed length (m) | 2 |



BURMESTER SEEFARTKREUZER 50M2 WINDFALL

MACHINERY

| | |
|--------------------------|---------------------------|
| No of engines | 1 |
| Make | Nanni |
| Type | 3-75HE |
| HP | 23 |
| kW | 16.93 |
| Fuel | diesel |
| Year installed | 2000 |
| Maximum speed (kn) | 7 |
| Cruising speed (kn) | 5 |
| Engine hours | 950 |
| Engine cooling system | freshwater heat exchanger |
| Drive | shaft |
| Shaft seal | Volvo |
| Engine controls | manual |
| Gearbox | mechanical |
| Propeller type | folding |
| Propeller blades | 3 |
| Propeller shaft material | stainless steel |
| Shaft lubrication | water |
| Manual bilge pump | yes |
| Electric bilge pump | yes |
| Electrical installation | 12 V |
| Batteries | 2 in total |
| Start battery | 1 x 12 V 62 AH 2025 |
| Service battery | 1 x Fulmen AGM 92 AH 2025 |

NAVIGATION

| | |
|-------------------|----------|
| Compass | yes |
| Depth sounder/log | Autohelm |
| Windset | Autohelm |



BURMESTER SEEFARTKREUZER 50M2 WINDFALL

| | |
|-------------------|---|
| Plotter/GPS | Raymarine Axiom 9"2019, with seataalk 1 STNG conversion kit |
| Navigation lights | Masthead, Port & Starboard & deck |

EQUIPMENT

| | |
|----------------------------|-------------------|
| Winter cover | For over the deck |
| Anchor | With light line |
| Anchor 2 | With ligh line |
| Sea railing | yes |
| Grab rail (superstructure) | yes |
| Pushpit | yes |
| Pulpit | yes |
| Lifebuoy | 2 horseshoe |
| Safety lines on deck | 2 |
| Fenders | 6 |

RIGGING

| | |
|-------------------------|--|
| Rigging | fractional |
| Standing rigging | wire |
| Material mast | aluminium White |
| Spreaders | 3 sets & diamond |
| Keel stepped mast | yes |
| Mainsail | 2021 Incidence Fibercon AP 40 m2 |
| Mainsail cover | yes |
| Fully battened mainsail | Dacron 40 m2 (2000) |
| Jib | Incedine Fibercon AP both Dacron (2000) both 25 m2 |
| Genoa furler | yes |
| Genoa cover | Rocon 2000 |
| Spinnaker | Incidine A2 Nylon 0,9 oz I, 2021 never used!!! |
| Backstay adjuster | mechanical |
| Genoa sheetwinches | 2 x Lewmar ST 40 2 speed |
| Multifunctional winches | 2 x Lewmar 30 ST for running backstays |





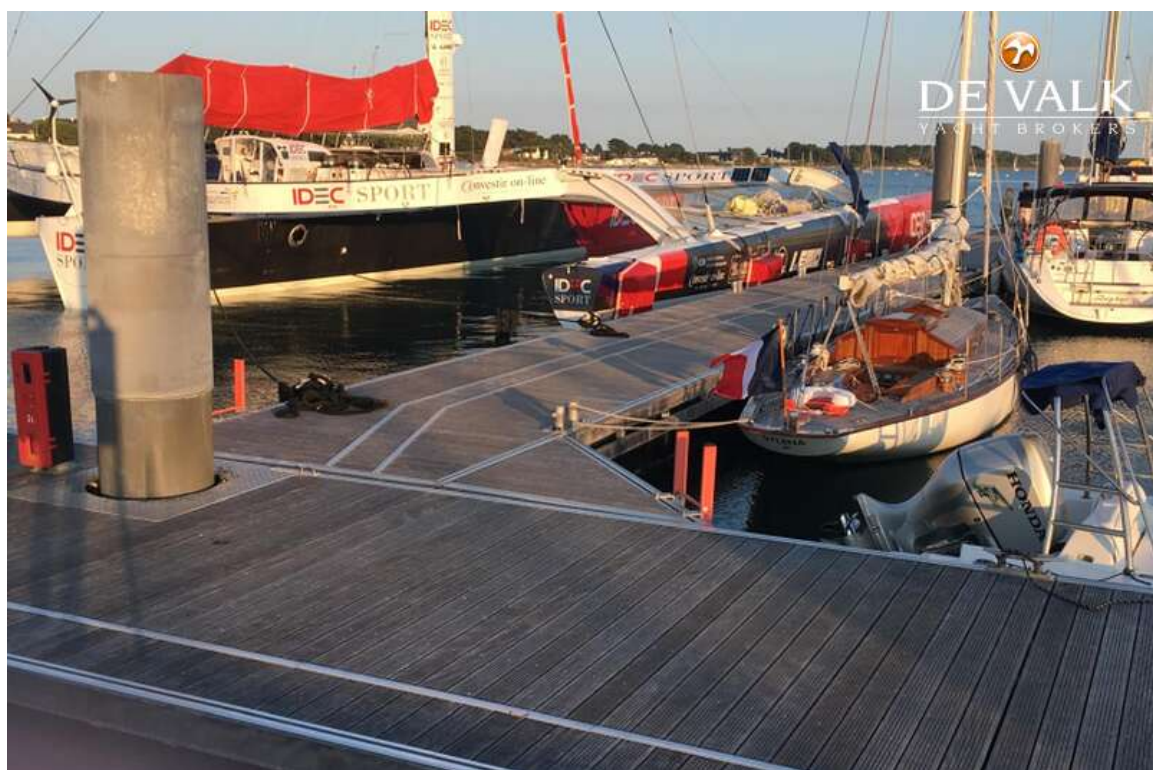
BURMESTER SEEFahrTKREUZER 50M2 WINDFALL



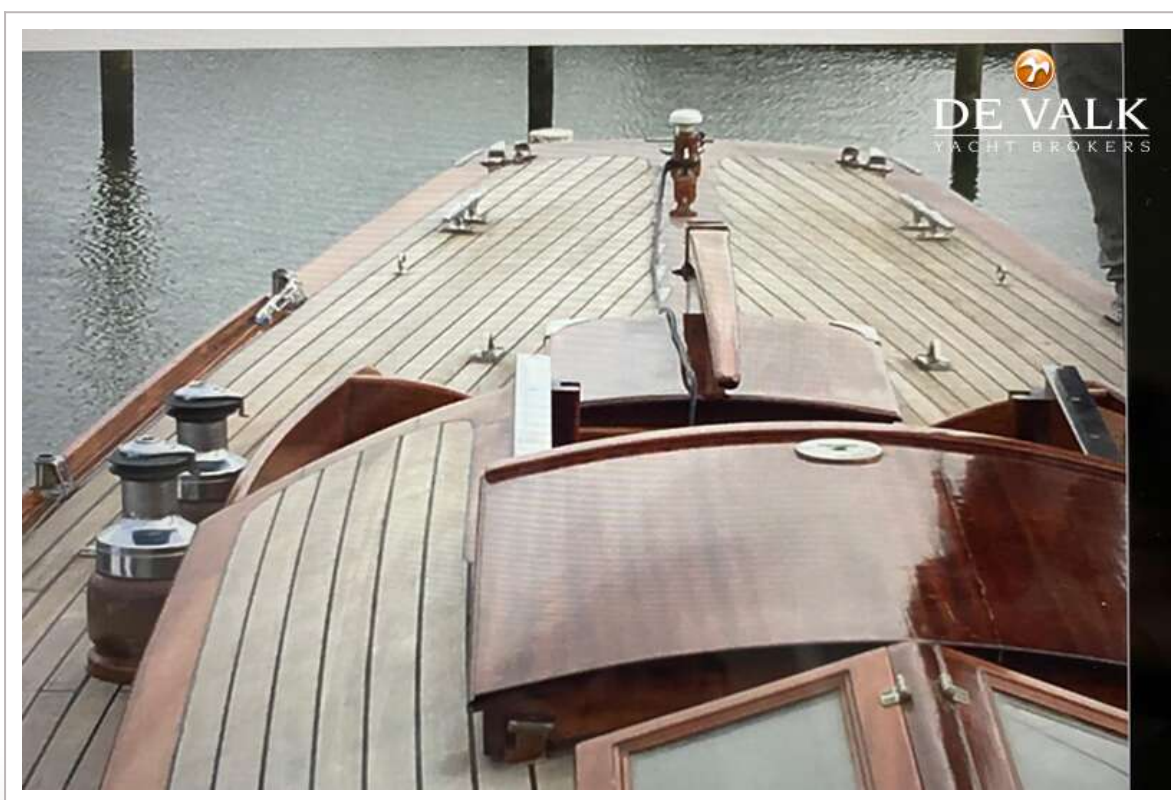
BURMESTER SEEFAHRTKREUZER 50M2 WINDFALL



BURMESTER SEEFahrTKREUZER 50M2 WINDFALL



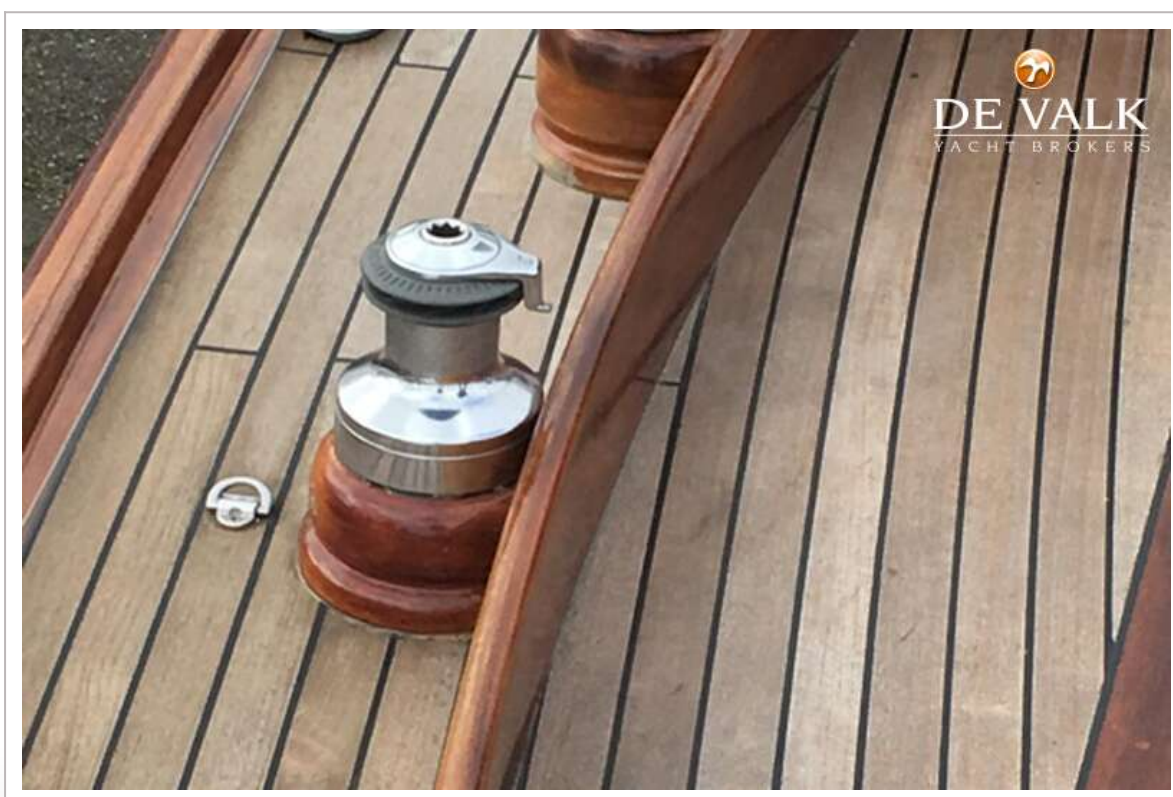
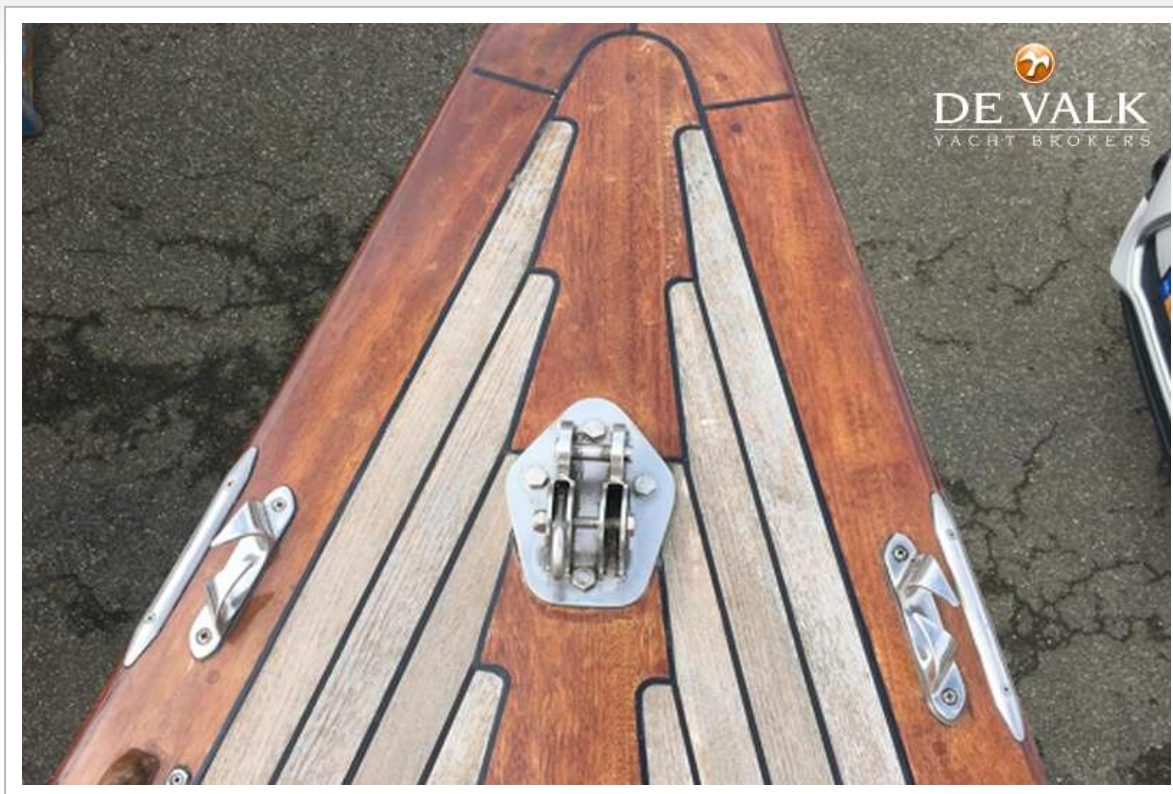
BURMESTER SEEFAHRTKREUZER 50M2 WINDFALL



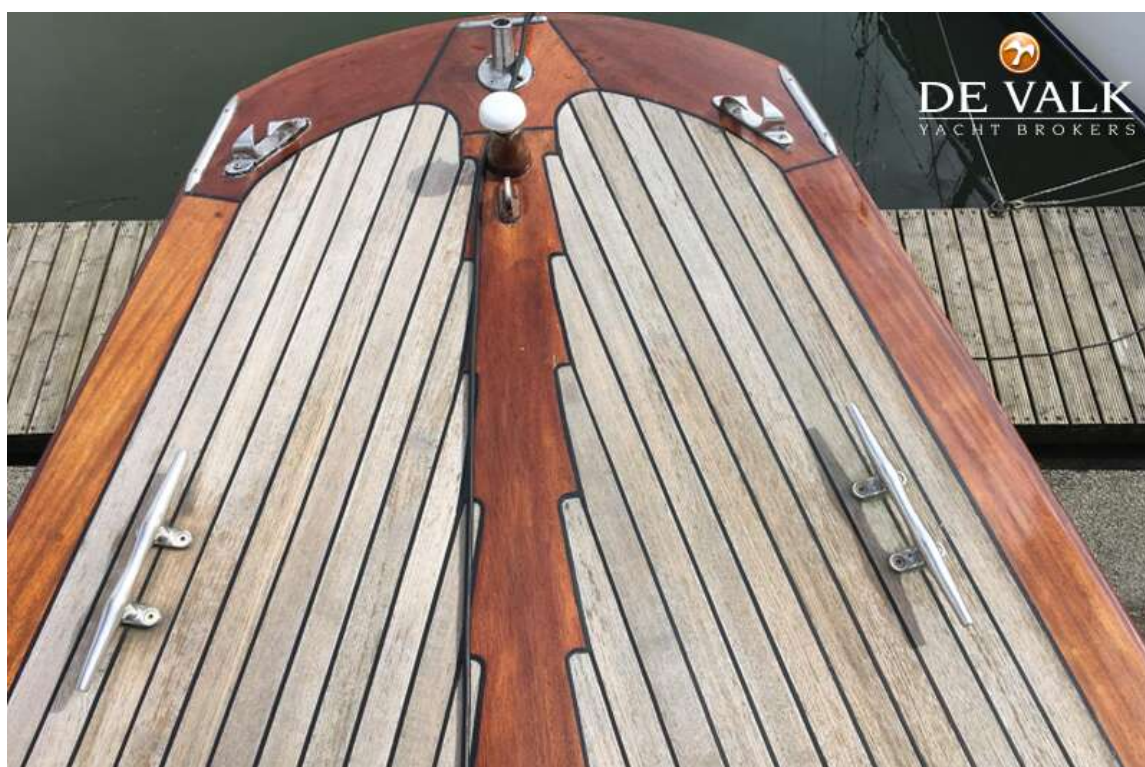
BURMESTER SEEFAHRTKREUZER 50M2 WINDFALL



BURMESTER SEEFahrTKREUZER 50M2 WINDFALL



BURMESTER SEEFAHRTKREUZER 50M2 WINDFALL



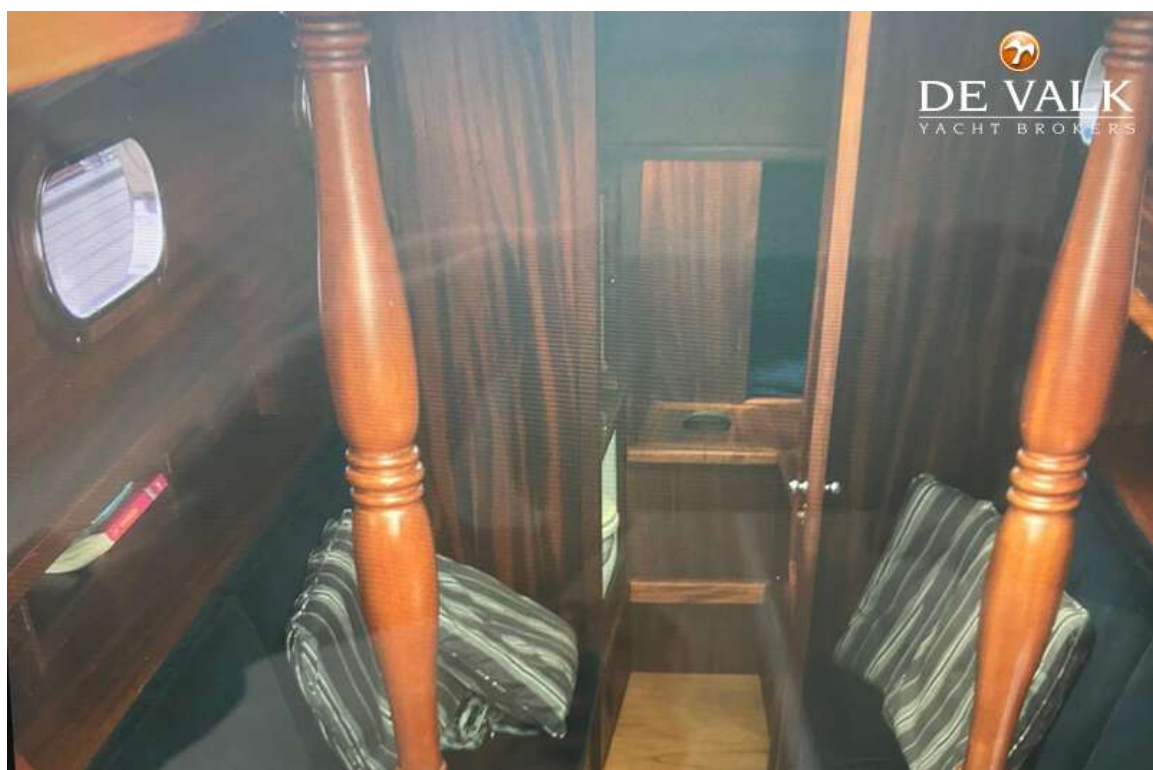
BURMESTER SEEFAHRTKREUZER 50M2 WINDFALL



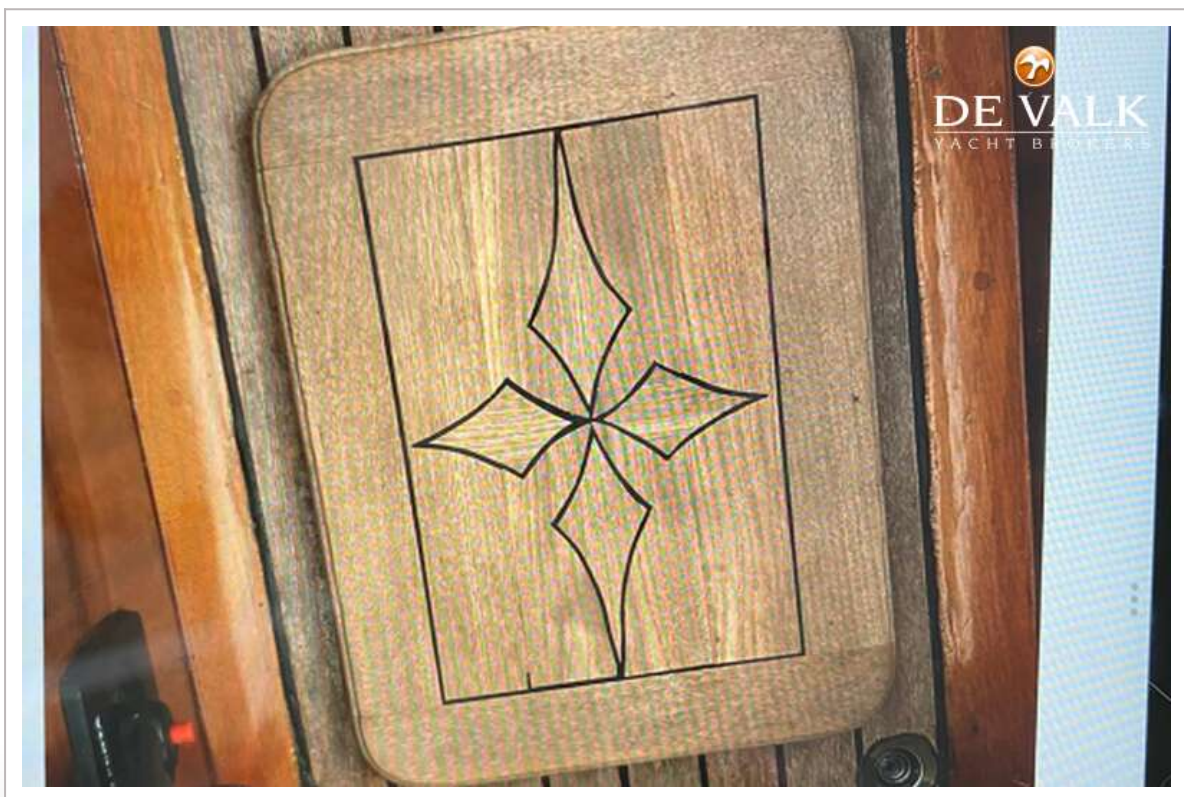
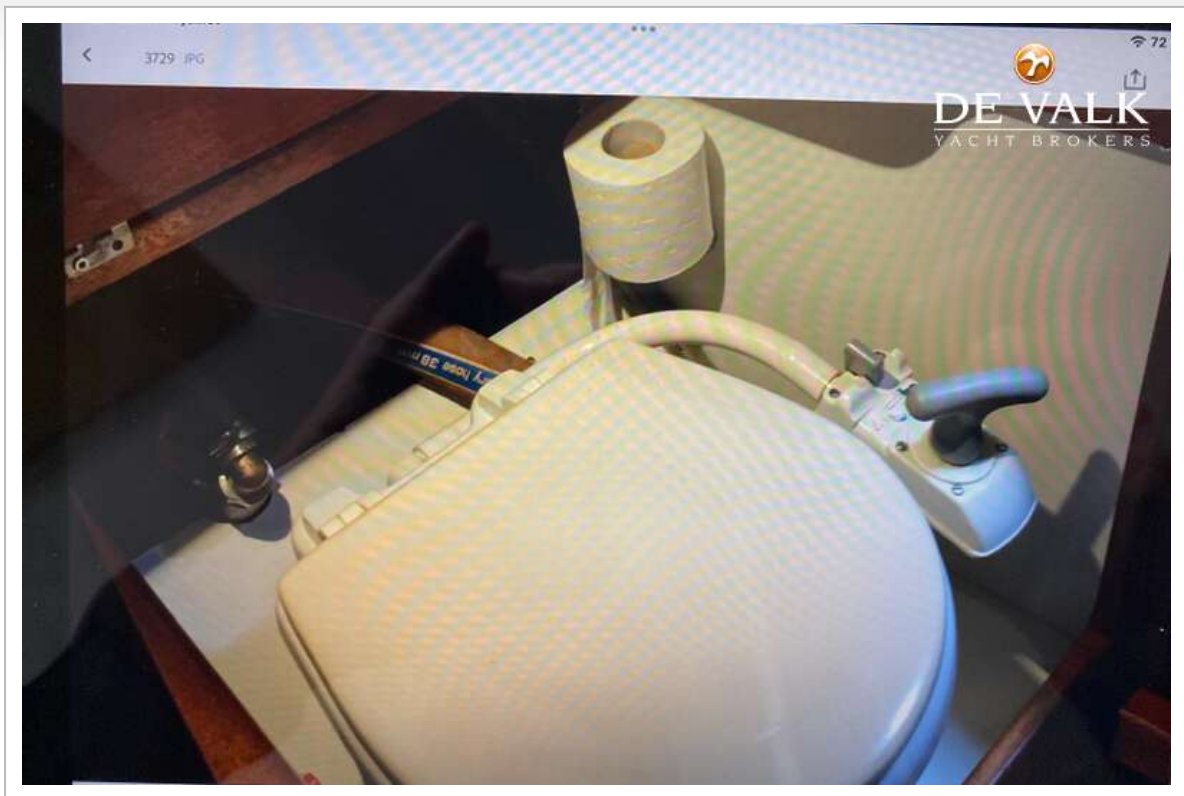
BURMESTER SEEFAHRTKREUZER 50M2 WINDFALL



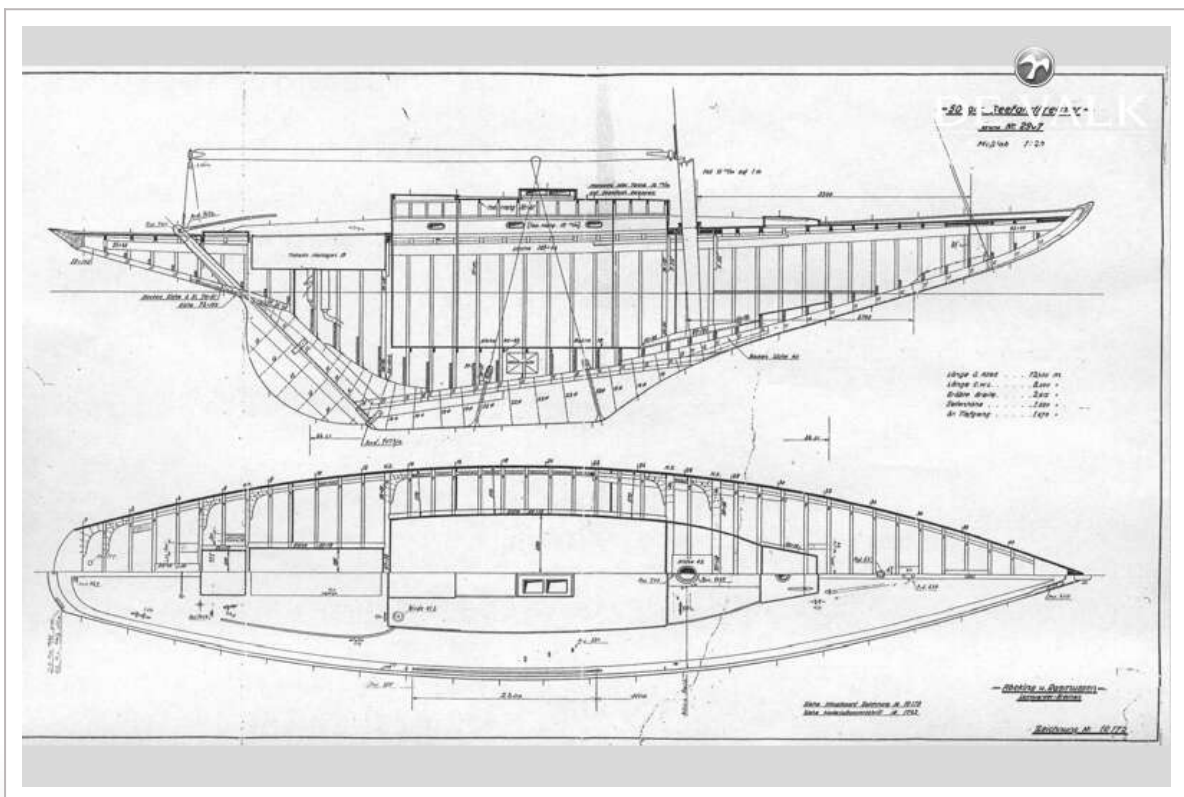
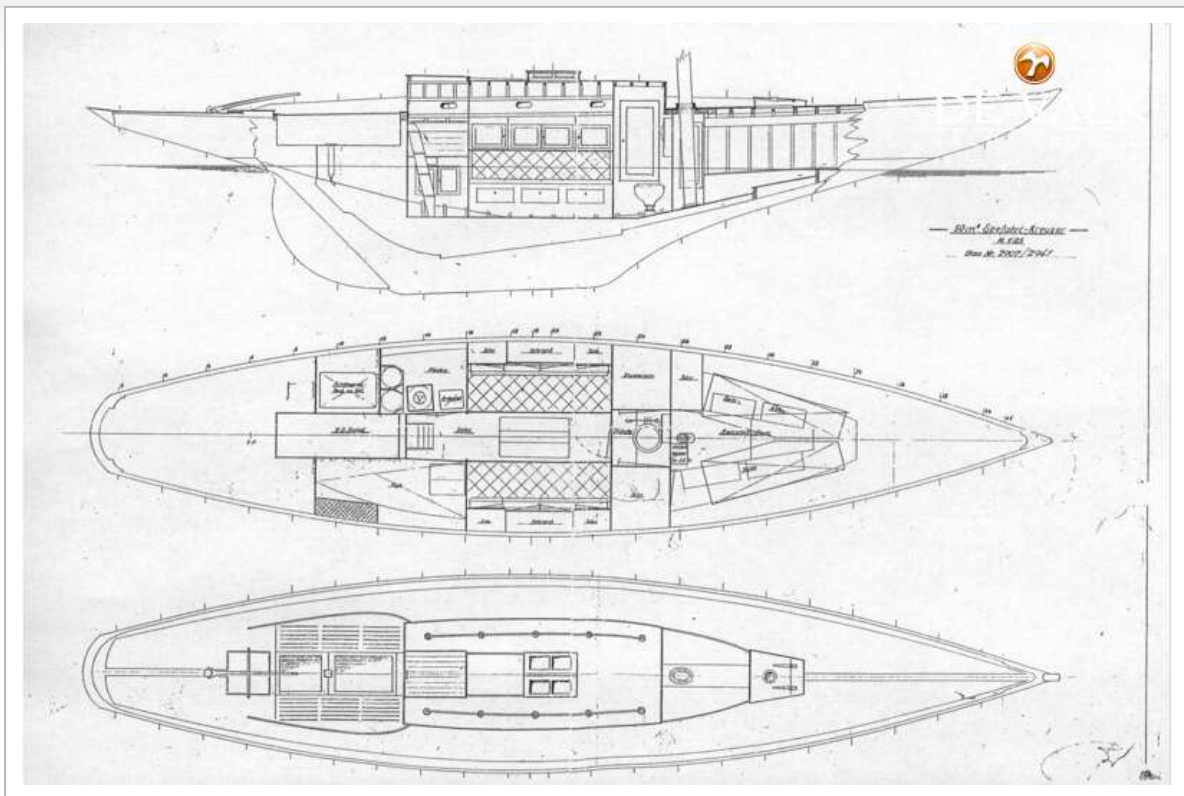
BURMESTER SEEFAHRTKREUZER 50M2 WINDFALL



BURMESTER SEEFAHRTKREUZER 50M2 WINDFALL



BURMESTER SEEFahrTKREUZER 50M2 WINDFALL



BURMESTER SEEFahrTKREUZER 50M2 WINDFALL

