



DE VALK
YACHT BROKERS



HANSE 540E



DE VALK
YACHT BROKERS

BROKER'S COMMENTS

The Hanse 540e combines modern layout and design with high sailing performance and plenty on deck and plenty of headroom below deck. The "e" in 540e indicates the epoxy-composite structure of the hull providing performance, sturdiness and long lasting construction well protected from osmosis. This particular yacht has been upgraded for blue ocean sailing with a lot of new equipment such as brand new sails, upgraded rigging, the latest B&G electronics, brand new generator, batteries She is a fine specimen of nowadays sailing yacht and ready to go. Viewing in Barcelona highly recommended.

Tue Simon Fasting

SPECIFICATIONS

Dimensions	16.10 x 4.91 x 2.43 (m)	Builder	Hanse Yachts
Built	2008	Cabins	3
Material	GRP	Berths	6
Engine(s)	1 x Yanmar 4JH4HTE diesel	Hp/Kw	110.00 (hp), 80.96 (kw)
Asking price	sold (VAT)	Lying	contact Hamburg

CONTACT

Sales office	De Valk Barcelona	Telephone	+34932202825
Address	Barcelona region Barcelona Spain	E-mail	barcelona@devalk.nl

DISCLAIMER

These particulars are given in good faith as supplied but cannot be guaranteed.



GENERAL

Model	HANSE 540E
Type	sailing yacht
LOA (m)	16,10
LWL (m)	14,60
Beam (m)	4,91
Draft (m)	2,43
Headroom (m)	2,00
Year built	2008
Builder	Hanse Yachts
Country	Germany
Designer	Judel/Vrolijk
Displacement (t)	18,7
Ballast (tonnes)	5,8
CE norm	A
Hull material	GRP
Hull colour	white
Hull shape	round-bilged
Keel type	fin keel with bulb
Superstructure material	GRP
Deck finish	teak 4-5mm, is water tight, but a few areas need attention.
Superstructure deck finish	teak
Cockpit deck finish	teak
Antifouling (year)	2023
Window frame	aluminium All window sealing changed in 2023
Window material	polycarbonate
Fuel tank (litre)	375 L
Level indicator (fuel tank)	yes
Freshwater tank (litre)	700 L
Blackwater tank (litre)	3 x 40L
Blackwater tank extraction	deck extraction + pump



Wheel steering	yes
Emergency tiller	yes
More info on paintwork	International Micron Extra

ACCOMMODATION

Cabins	3
Berths	6
Interior	mahogany
Layout	Masterbedroom in front and 2 double cabins in aft
Saloon	yes
Headroom saloon (m)	2,0m
Navigation center	yes
Chart table	yes
Aft Cabin	2 x double
Galley	L-shape
Countertop	corian
Sink	corian
Cooker	calor gas
Oven	yes
Gas alarm	yes
Microwave	yes
Fridge	2 x
Freezer	yes
Hot water system	220V + engine
Water pressure system	electrical
Crockery	yes
Owners cabin	double bed
Bed length (m)	> 2,0m
Wardrobe	hanging and drawers
Bathroom	en suite
Toilet	en suite



Toilet system	electric Only in front cabin electric
Wash basin	in the bathroom
Shower	en suite
Guest cabin 1	double bed
Bed length (m)	> 2,0m
Bathroom	en suite
Toilet	en suite
Toilet system	manual
Wash basin	in the bathroom
Shower	en suite
Guest cabin 2	double bed
Bed length (m)	> 2,0m
Bathroom	en suite
Toilet	en suite
Toilet system	manual
Wash basin	in the bathroom
Shower	en suite
Washing machine	yes
Extra info	All interior lights are LED, stainless steel handrail on ceiling

MACHINERY

No of engines	1
Make	Yanmar
Type	4JH4HTE
HP	110
kW	80.96
Fuel	diesel
Maximum speed (kn)	8
Cruising speed (kn)	7
Consumption (l/hr)	5
Engine hours	890



Engine cooling system	freshwater heat exchanger
Drive	shaft
Engine controls	bowden cable
Gearbox	mechanical
Propeller type	folding Max Prop
Propeller blades	3
Shaft lubrication	water
Manual bilge pump	yes
Electric bilge pump	yes
Generator	Whisper Power M-GV5 Piccolo 3,5kW, GVC Generator Control (2022)
Running hours generator	50
Batteries	13
Start battery	1
Service battery	10
Battery monitor	yes
Battery charger/inverter	Victron Multi Control Charger (2022)
Shorepower	with cable
Extra info	New Shaft in 2023
Extra info	Power Management System SIMARINE

NAVIGATION

Compass	Plastimo Contest 130
Depth sounder	2 x B&G
Log	Simrad
Windset	Simrad
VHF	MF / HF Marine IC M803 (2022)
VHF handheld	B&G HX890
Autopilot	2 x B&G (2022)
Rudder angle indicator	yes
Radar	Simrad



Radar/GPS/plotter	B&G Zeus 3 (2022)
Weather receiver	Weatherman
AIS receiver	Verspermarine Watchmate
Radio receiver	SC8 High Performance HF Radio PR-7800
EPIRB	yes
Personal MOB transmitter	yes
Navigation lights	yes

EQUIPMENT

Sprayhood	(2019)
Sprayhood with grab rail	yes
Bimini	(2019)
Cockpit table	yes
Cockpit chairs	yes
Bathing platform	yes
Boarding ladder	stainless steel
Gangway	yes
Deck shower	yes
Anchor	Delta
Anchor chain	100m, 8mm Ø
Other ground tackle	Kla
Windlass	electrical
Dinghy	rigid inflatable
Outboard	Powertech 4hp (2020)
Sea railing	wire
Railing side opening gates	SB and Port
Pushpit	yes
Pulpit	yes
Life raft (pers)	container Plastimo (8 Pers)
Last life raft survey	2017
Lifejackets	4



Safety harness	2
Safety lines on deck	2 x
Horn	yes
Radar reflector	yes
Fenders	yes
Mooring lines	yes
Spare parts	yes
Tools	yes
TV	yes
Radio-cd player	FUSION Sound System (2022)
DVD player	yes
Cockpit speakers	2 x
Speakers in salon	2 x FUSION + Subwoofer
Speakers in cabin	2 x FUSION in bow cabin
Clock - barometer	3 sets of Clock, Barometer, Hygrometer

RIGGING

Rigging	fractional
Standing rigging	wire From 2008
Brand mast	Sparcraft
Material mast	aluminium
Keel stepped mast	yes
Mainsail	North Sails (2023)
Mainsail cover	W/ Lazy-Jacks (2019)
Battcars	yes
Fully battened mainsail	yes
Jib	North Sails (2023)
Self tacking jib installation	yes
Reefing System	quick-one-line-reefing
Backstay adjuster	mechanical
Boomvang	gasspring



HANSE 540E

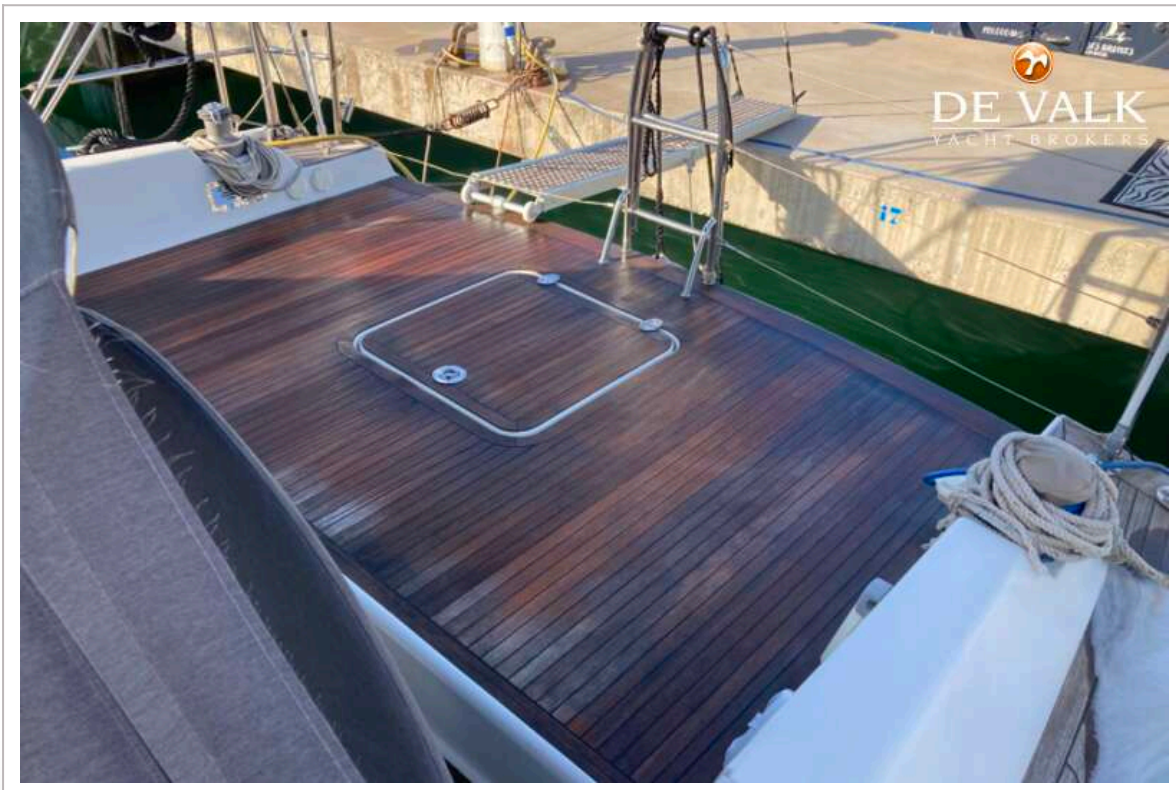
Primary sheet winch	2 x LEWMAR 54 electric
Secondary sheet winch	2 x LEWMAR 46 manual
Genoa sheetwinches	yes
Halyard winches	yes
Spinnaker winch	yes
Extra info	Running Rig renewed in 2023



HANSE 540E



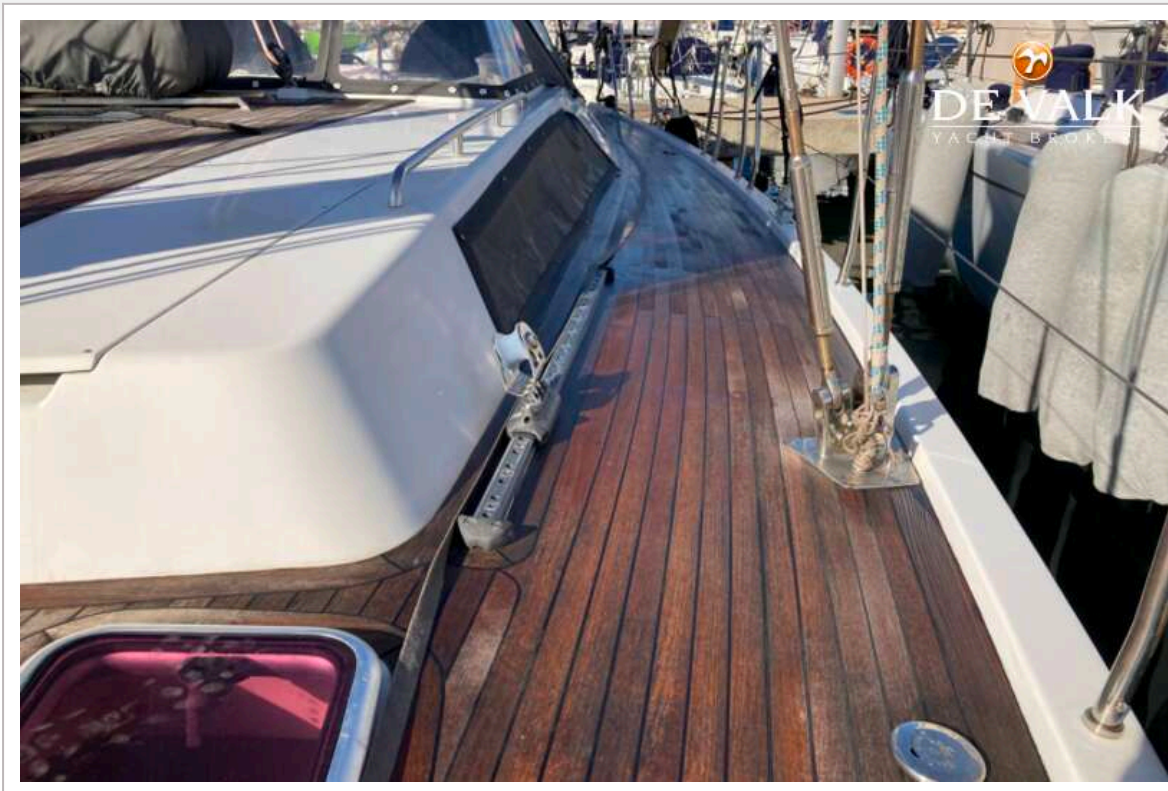
HANSE 540E



HANSE 540E

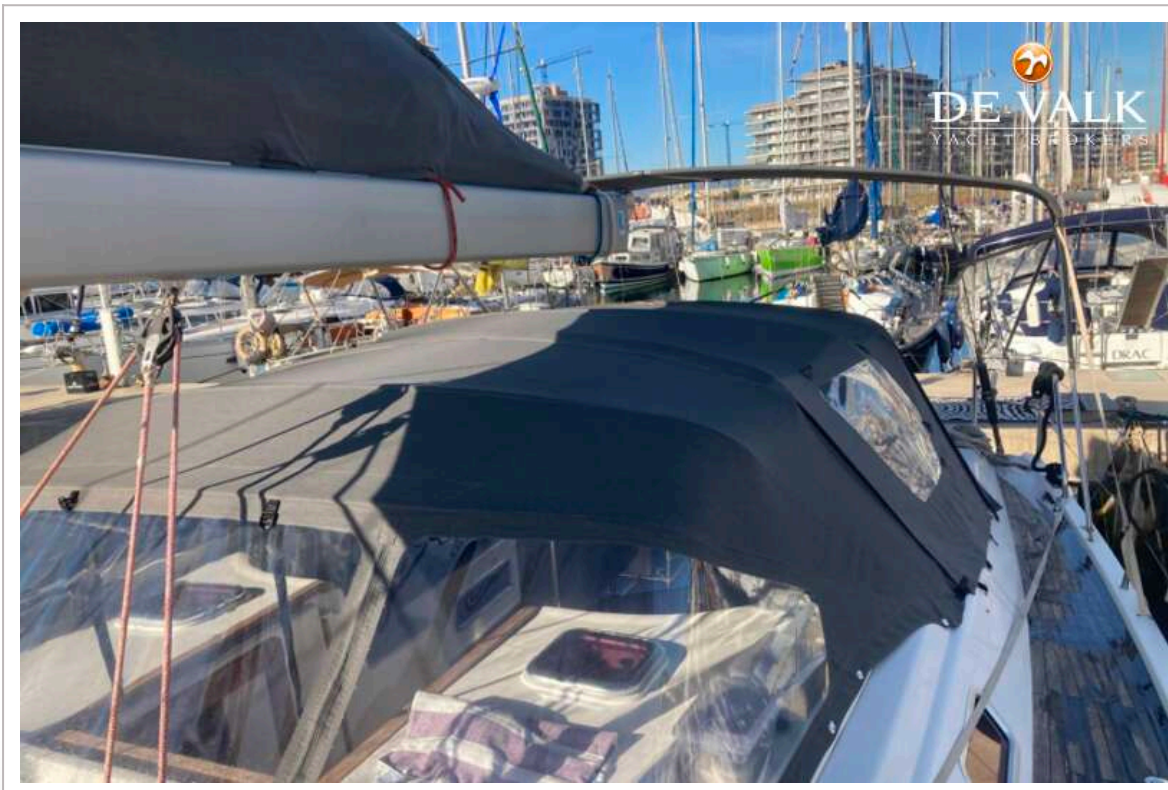
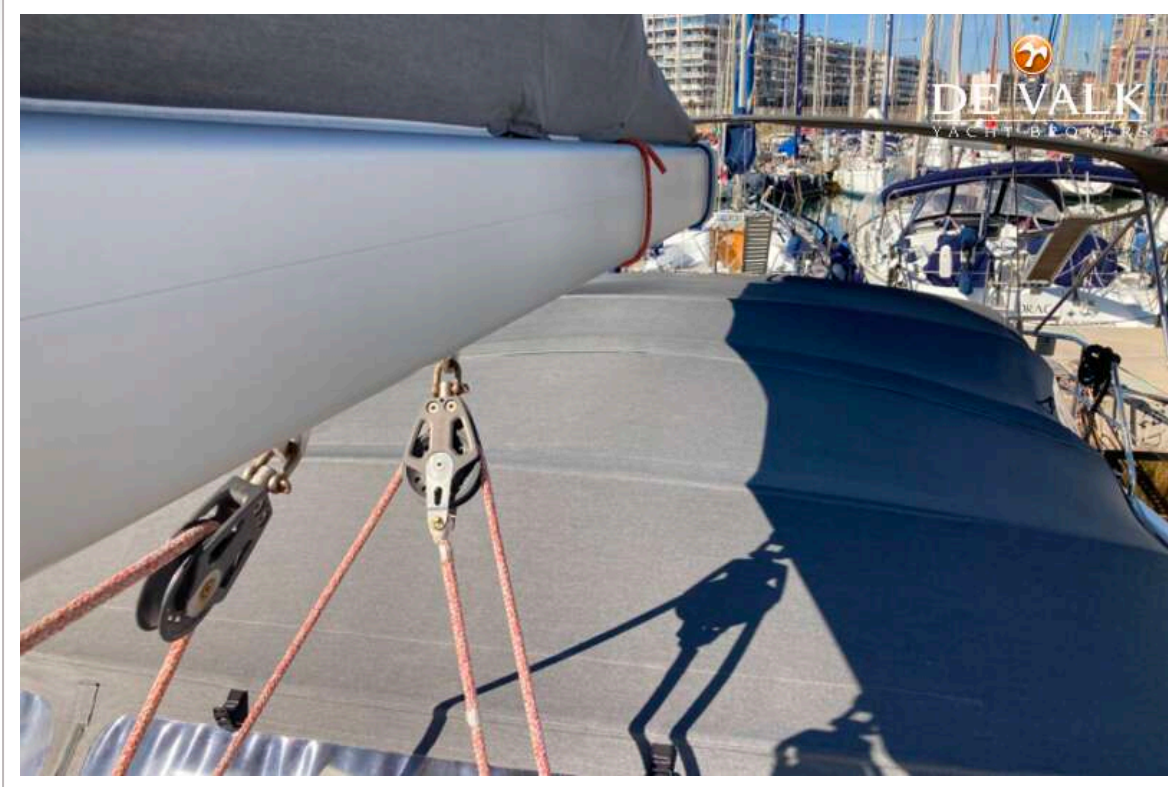


HANSE 540E



HANSE 540E





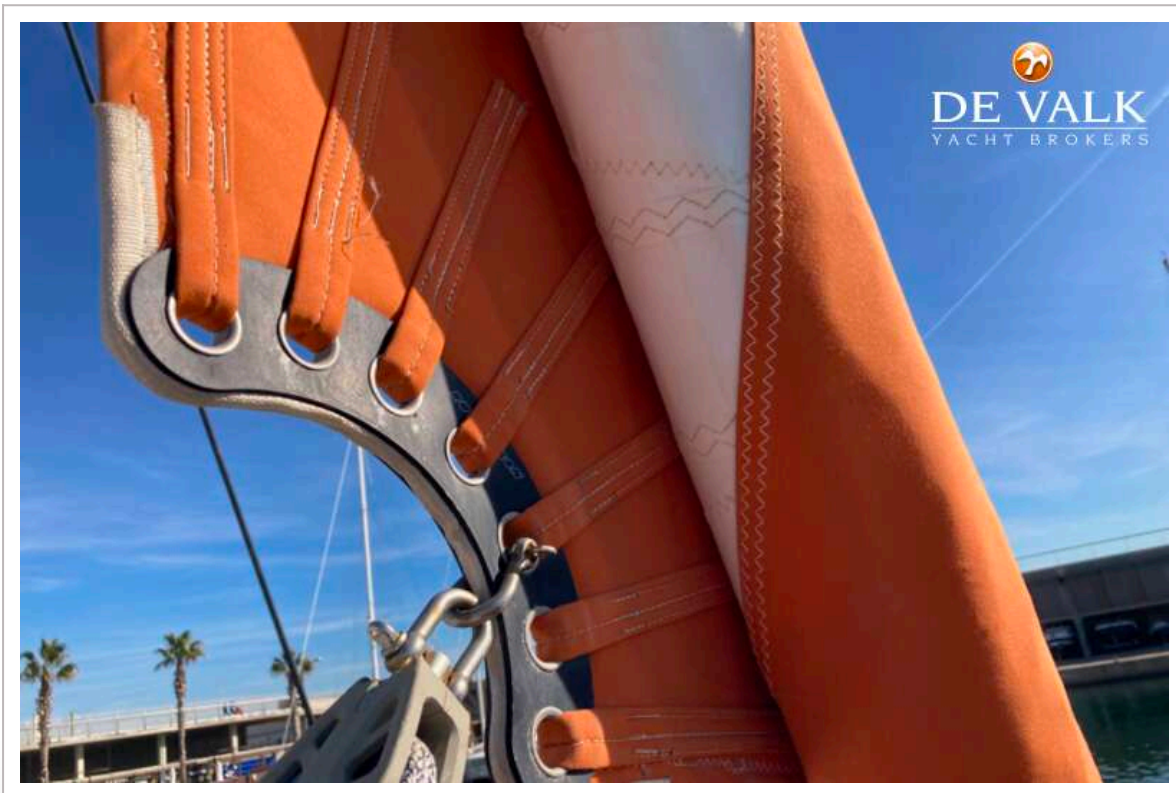
HANSE 540E



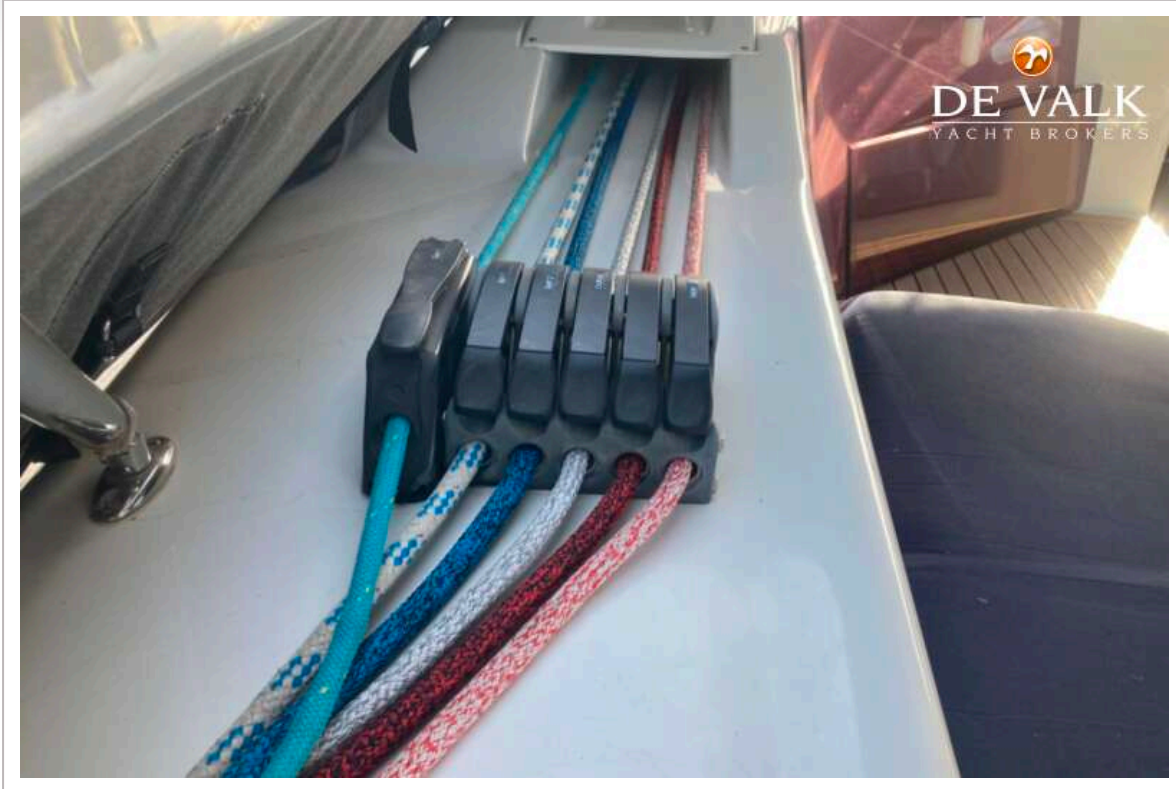
HANSE 540E



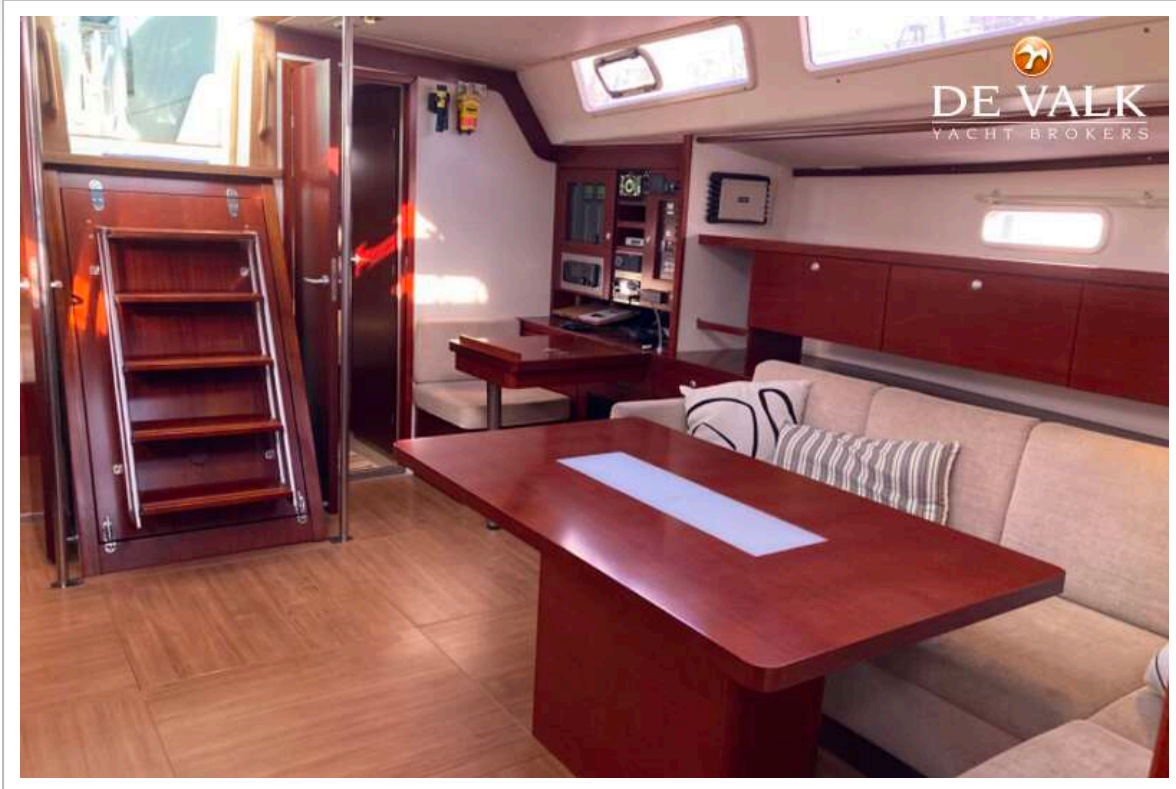
HANSE 540E



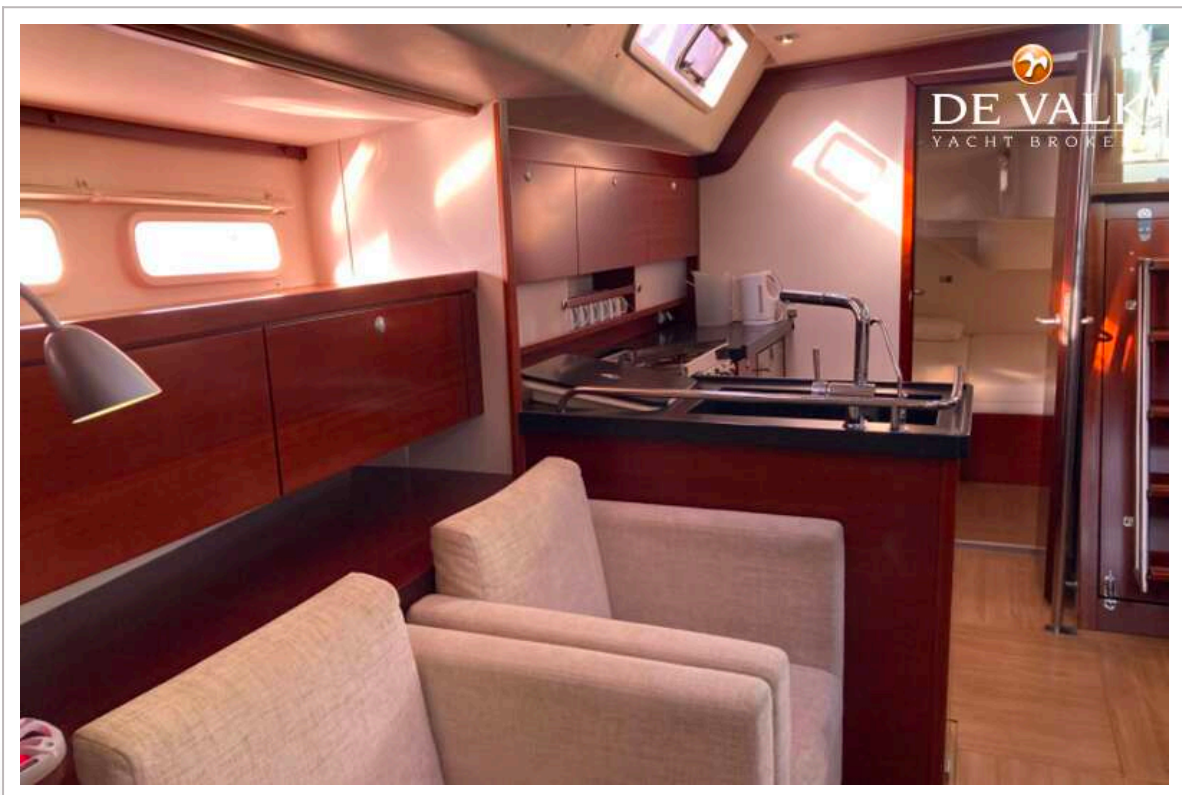
HANSE 540E



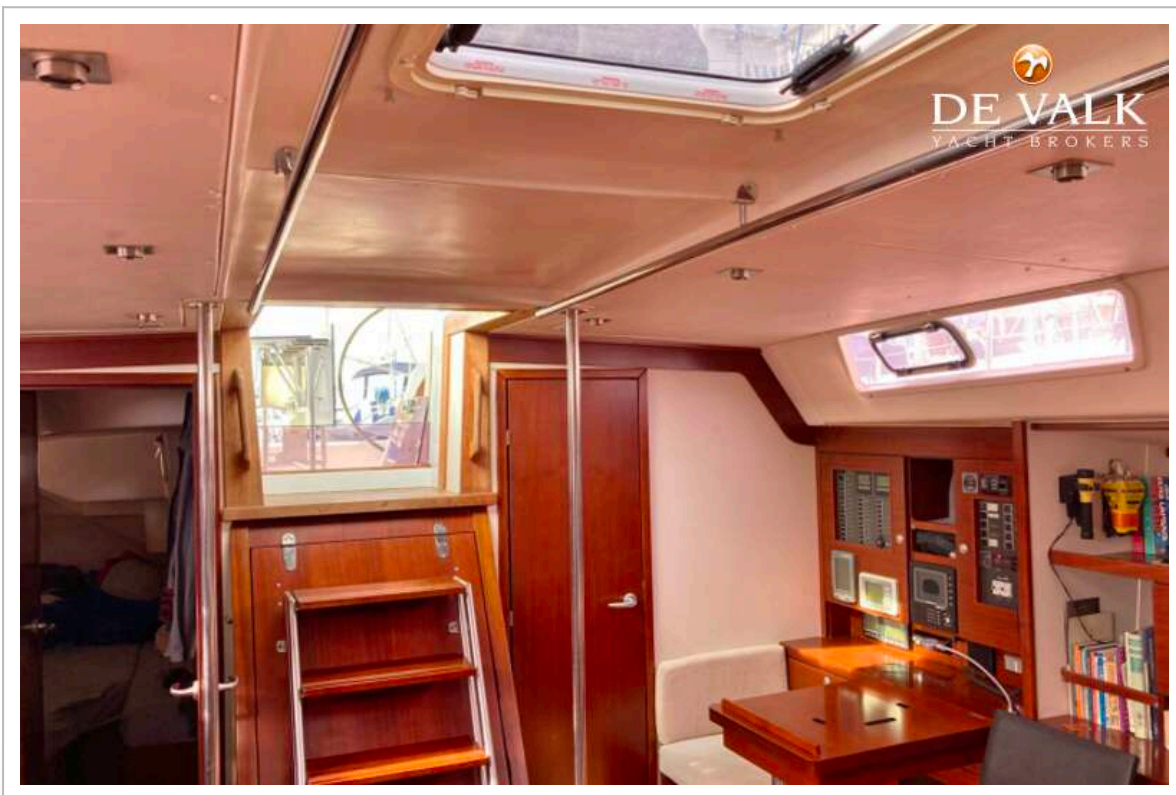
HANSE 540E



HANSE 540E



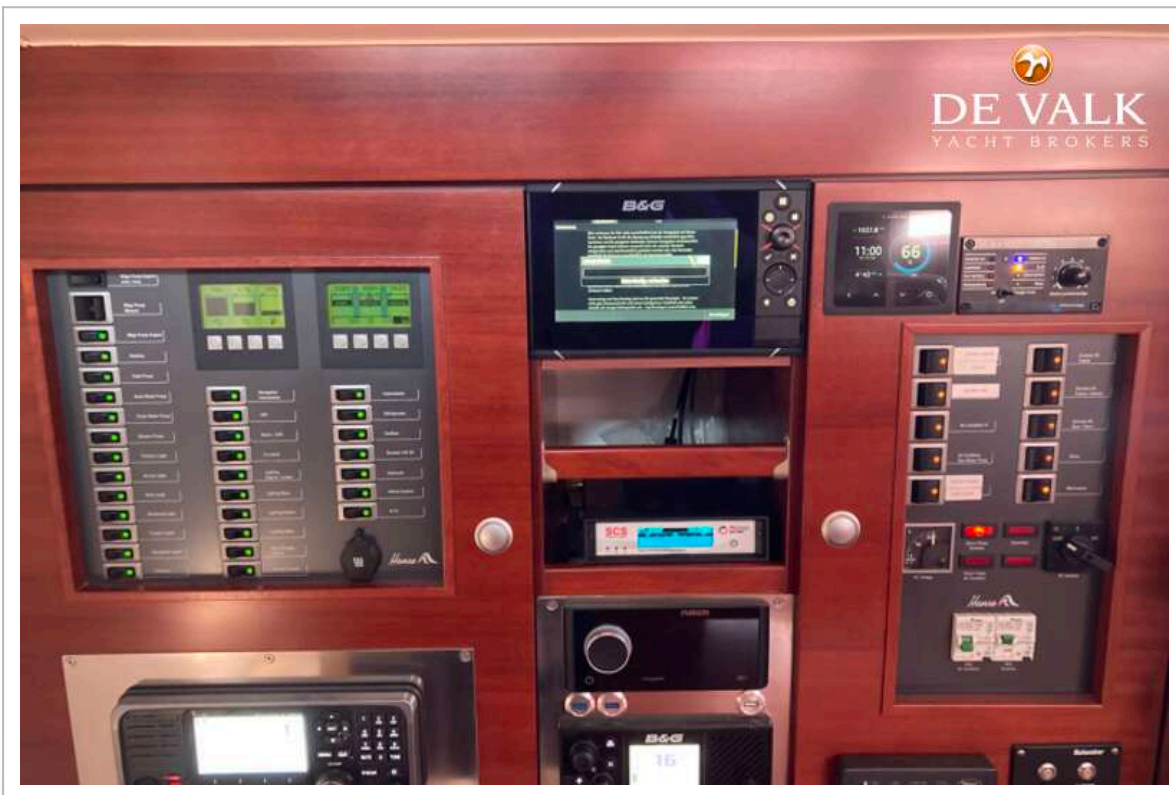
HANSE 540E



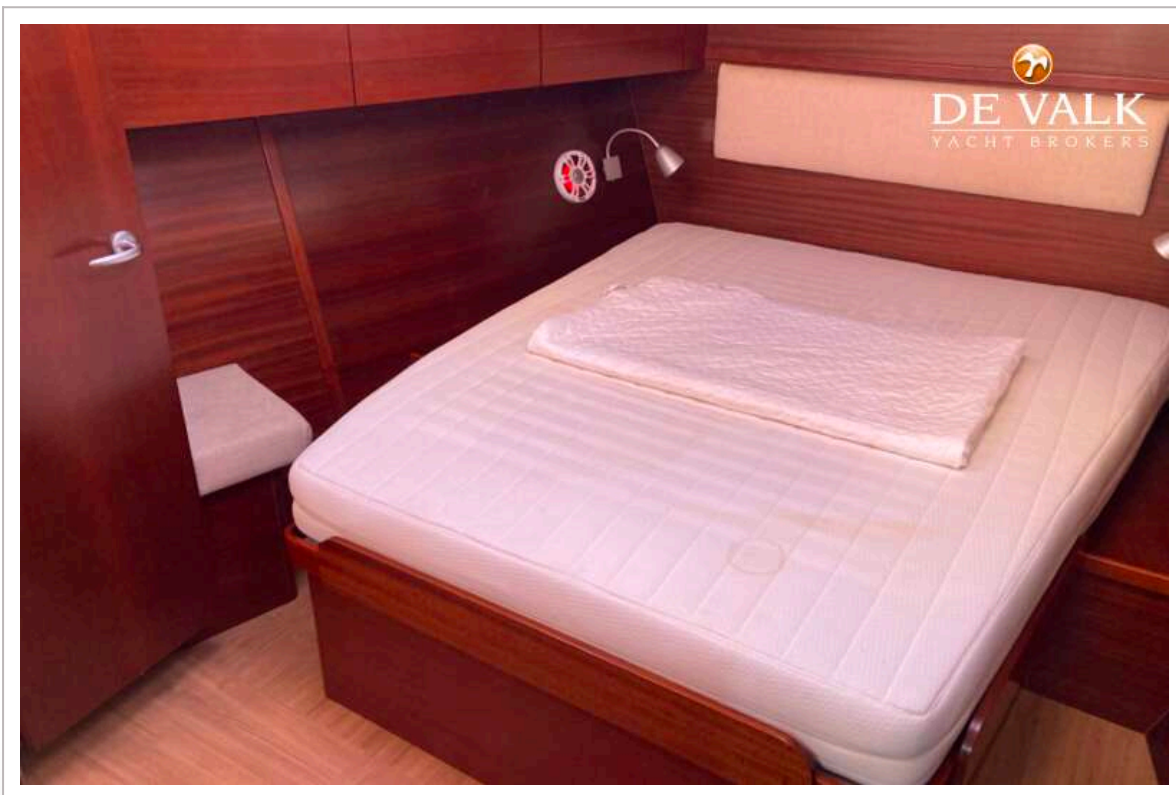
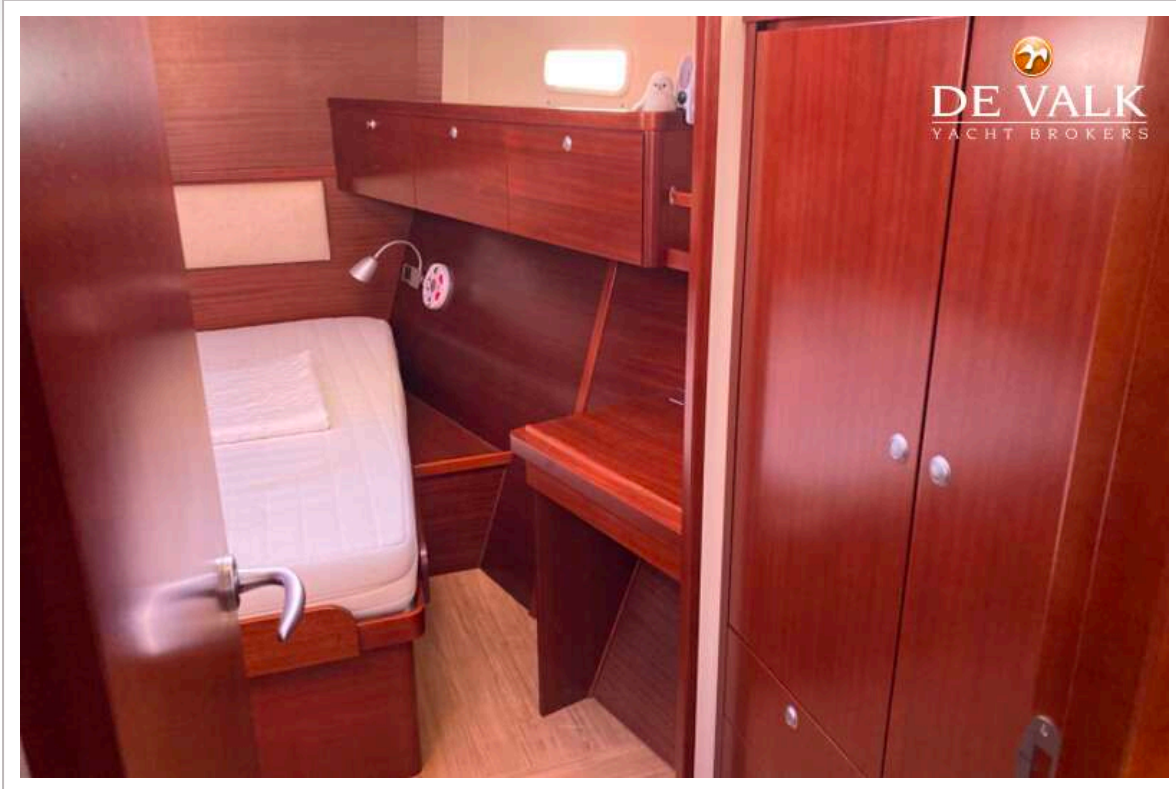
HANSE 540E



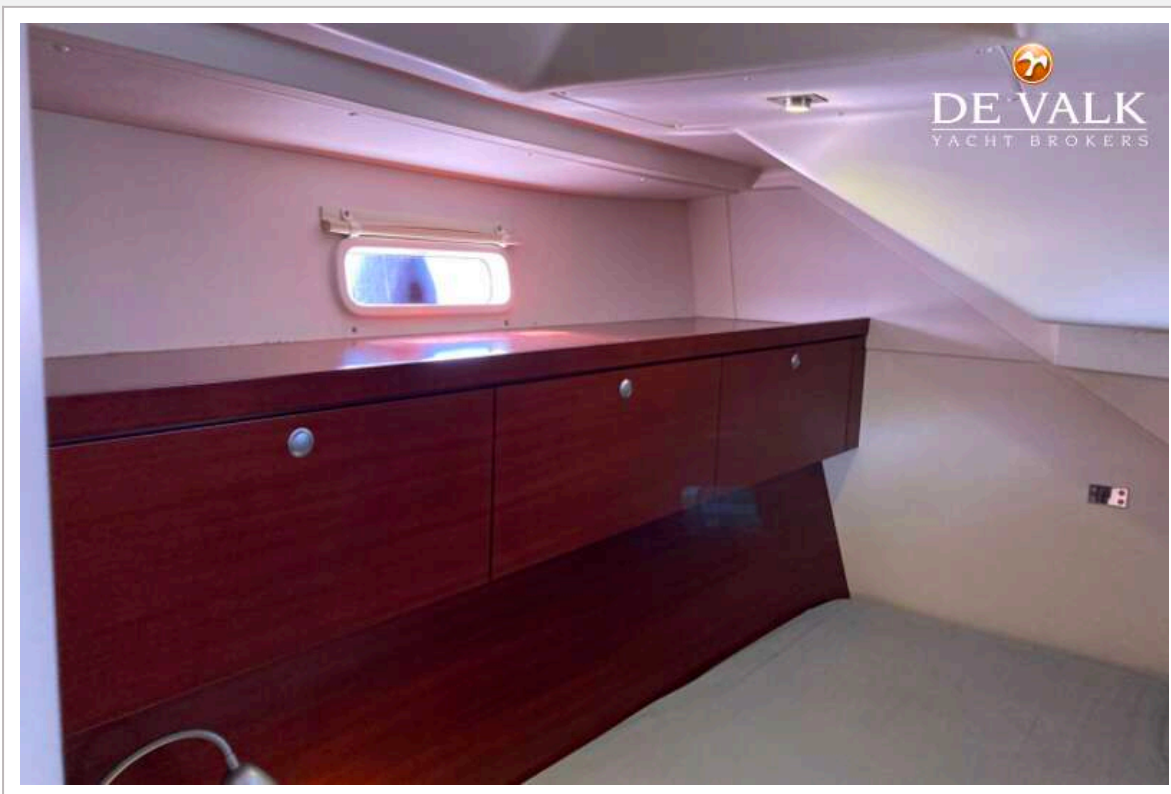
HANSE 540E



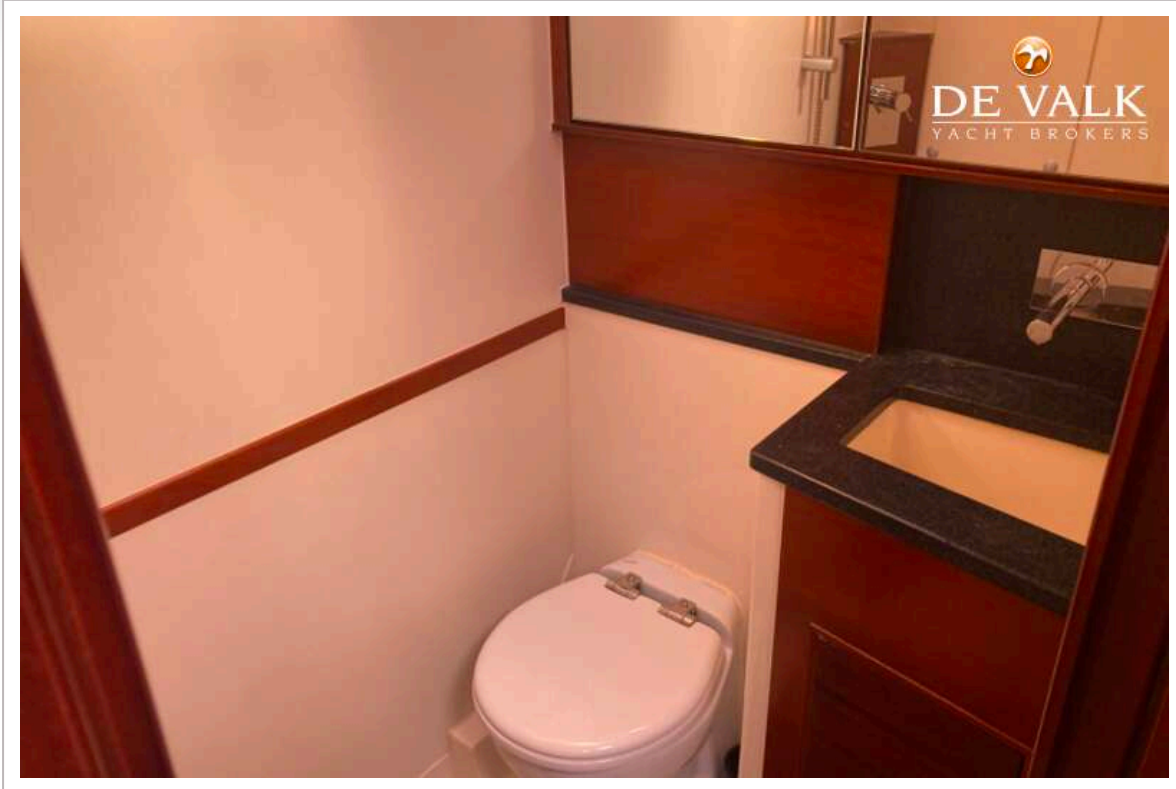
HANSE 540E



HANSE 540E



HANSE 540E



HANSE 540E

