



DE VALK  
YACHT BROKERS



AQUANAUT EUROPEAN VOYAGER 1500



DE VALK  
YACHT BROKERS

# AQUANAUT EUROPEAN VOYAGER 1500

## BROKER'S COMMENTS

For the first owner, we offer a beautiful Aquanaut 1500 European Voyager, the only one in this series with CE category A, suitable for distant sea trips. Equipped with two Vetus Deutz engines, hydraulic bow and stern thrusters and Rotorswing stabilisers. The beautifully finished oak interior offers space for two cabins with comfortable Neptune mattresses. Including ingenious bicycle carrying system. An ideal family boat for long trips. Available for viewing at our sales marina in Loosdrecht.

*Sjoerd Paddenburg*

## SPECIFICATIONS

<b>Dimensions</b>	14.95 x 4.60 x 1.25 (m)	<b>Builder</b>	Aquanaut Sneek
<b>Built</b>	2020	<b>Cabins</b>	2
<b>Material</b>	Steel	<b>Berths</b>	4
<b>Engine(s)</b>	2 x Vetus Deutz VD6 diesel	<b>Hp/Kw</b>	2 x 170.00 (hp), 125.12 (kw)
<b>Asking price</b>	sold (VAT )	<b>Lying</b>	at sales office

## CONTACT

<b>Sales office</b>	De Valk Loosdrecht	<b>Telephone</b>	+31 35 582 90 30
<b>Address</b>	't Breukeleveense Meentje 6 1231 LM Loosdrecht / Wijdmeren The Netherlands	<b>E-mail</b>	loosdrecht@devalk.nl

## DISCLAIMER

These particulars are given in good faith as supplied but cannot be guaranteed.



# AQUANAUT EUROPEAN VOYAGER 1500

## GENERAL

<b>Model</b>	AQUANAUT EUROPEAN VOYAGER 1500
<b>Type</b>	motor yacht
<b>LOA (m)</b>	14,95
<b>Beam (m)</b>	4,60
<b>Draft (m)</b>	1,25
<b>Air draft (m)</b>	3,50
<b>Year built</b>	2020
<b>Builder</b>	Aquanaut Sneek
<b>Country</b>	The Netherlands
<b>Gross tonnage</b>	30
<b>CE norm</b>	A
<b>Hull material</b>	steel
<b>Hull colour</b>	white
<b>Hull shape</b>	multi hard chine
<b>Superstructure material</b>	steel
<b>Rubbing strake</b>	stainless steel
<b>Deck material</b>	steel
<b>Deck finish</b>	synthetic teak Flexiteak
<b>Superstructure deck finish</b>	paint
<b>Cockpit deck finish</b>	synthetic teak Flexiteak
<b>Antifouling (year)</b>	2023
<b>Window frame</b>	aluminium 3x window stops in wheelhouse
<b>Window material</b>	double glazing Tinted (also doors in salon/wheelhouse for low engine noise)
<b>Deckhatch</b>	yes
<b>Portholes</b>	yes
<b>Insulation</b>	foam Hull: PU/Hertel Superstructure: Tarex/Koto
<b>Flybridge</b>	yes
<b>Flybridge cover</b>	For helm seat and dashboard
<b>Radar arch</b>	collapsible Electric
<b>Mast can be lowered</b>	hydraulic Aluminium mast



# AQUANAUT EUROPEAN VOYAGER 1 500

<b>Fuel tank (litre)</b>	steel 1000 liter with SWK 2000 water separator
<b>Fuel tank 2 (litre)</b>	steel 1000 liter with SWK 2000 water separator
<b>Level indicator (fuel tank)</b>	yes
<b>Freshwater tank (litre)</b>	stainless steel 1350 liter (over 4 tanks)
<b>Blackwater tank (litre)</b>	stainless steel 400
<b>Blackwater tank extraction</b>	deck extraction + pump
<b>Wheel steering</b>	hydraulic
<b>Inside helm position</b>	yes
<b>Flybridge helm position</b>	hydraulic Wheel steering

## ACCOMMODATION

<b>Cabins</b>	2
<b>Berths</b>	4
<b>Interior</b>	oak
<b>Floor</b>	PVC
<b>Aft deck</b>	yes
<b>Pilot house/deck saloon</b>	yes
<b>Heating</b>	central heating Kabola HR 400 Combi Floor Heating
<b>Heating 2</b>	2x Klickspace Myson 800
<b>Dinette</b>	yes
<b>Sliding door to cockpit</b>	yes
<b>Sink</b>	stainless steel
<b>Cooker</b>	induction Siemens EH611BFB1E - 4 burners
<b>Extractor</b>	Siemens LI64LA520
<b>Microwave/oven combi</b>	Siemens BF634RSG1
<b>Fridge</b>	Dometic
<b>Freezer</b>	In fridge
<b>Hot water system</b>	on central heating
<b>Water pressure system</b>	electrical Hydrophore Hollex 24V - 24S
<b>Dishwasher</b>	Siemens SR656D00TE
<b>Owners cabin</b>	v-bed Neptune mattress



# AQUANAUT EUROPEAN VOYAGER 1500

<b>Bed length (m)</b>	2
<b>Wardrobe</b>	hanging and shelves
<b>Bathroom</b>	en suite
<b>Toilet</b>	separate
<b>Toilet system</b>	electric Tecma
<b>Wash basin</b>	at the toilet
<b>Shower</b>	separate
<b>Guest cabin 1</b>	double bed
<b>Bed length (m)</b>	2
<b>Wardrobe</b>	hanging and shelves
<b>Bathroom</b>	shared
<b>Toilet</b>	shared
<b>Toilet system</b>	electric Tecma
<b>Wash basin</b>	in the bathroom
<b>Shower</b>	shared
<b>Washing machine/dryer combi</b>	Miele WT1
<b>Extra info</b>	Stair lighting

## MACHINERY

<b>No of engines</b>	2
<b>Make</b>	Vetus Deutz
<b>Type</b>	VD6
<b>HP</b>	170
<b>kW</b>	125.12
<b>Fuel</b>	diesel
<b>Cruising speed (kn)</b>	7 @ 1495 RPM
<b>Engine hours</b>	793
<b>Engine cooling system</b>	freshwater heat exchanger
<b>Drive</b>	shaft
<b>Engine controls</b>	electrical
<b>Gearbox</b>	hydraulic Aquadrive



# AQUANAUT EUROPEAN VOYAGER 1 500

<b>Bowthruster</b>	hydraulic Vetus 230Kgf
<b>Sternthruster</b>	hydraulic Vetus 230Kgf
<b>Propeller type</b>	fixed
<b>Propeller shaft material</b>	stainless steel
<b>Shaft lubrication</b>	water
<b>Electric bilge pump</b>	3x
<b>Electrical installation</b>	24V / 230V
<b>Generator</b>	wet exhaust WhisperPower Picolo 8
<b>Running hours generator</b>	1100
<b>Service battery</b>	12x 2V-750 Ah / 24V
<b>Battery monitor</b>	yes
<b>Battery charger</b>	Whisper Power DC Powercube 24V/150A
<b>Inverter</b>	Whisper Power WP-AC Powercube 24V/7000W
<b>Shorepower</b>	with cable 30 meter
<b>Insulation transformer</b>	Whisper Power WPG1 - 4000W
<b>Stabilizers</b>	0-speed Rotorswing Type 140 with 2 folding positions
<b>Extra info</b>	1x Alternator W24V75 Whisper Power + 2x 110 Ah

## NAVIGATION

<b>Depth sounder/log</b>	Raymarine DST800
<b>Windset</b>	Rotavecta
<b>VHF</b>	Raymarine Ray90
<b>Autopilot</b>	Raymarine RMK 10
<b>Rudder angle indicator</b>	On autopilot
<b>GPS</b>	yes
<b>Radar/GPS/plotter</b>	Raymarine Axiom with Smart controller
<b>AIS receiver</b>	Raymarine AIS700
<b>Camera</b>	Rear: Cam 100
<b>Navigation lights</b>	yes
<b>Extra info</b>	Follow-up steering



# AQUANAUT EUROPEAN VOYAGER 1 500

## EQUIPMENT

<b>Cockpit cover</b>	Grey zippable
<b>Bimini</b>	With sides
<b>Bathing platform</b>	yes
<b>Boarding ladder</b>	stainless steel
<b>Deck shower</b>	yes
<b>Anchor</b>	Bruce 30 kg
<b>Anchor chain</b>	yes
<b>Windlass</b>	hydraulic Maxwell (with remote control)
<b>Deck wash</b>	Jabsco
<b>Sea railing</b>	stainless steel
<b>Wiper</b>	With interval and screen wash
<b>Horn</b>	yes
<b>Fenders</b>	yes
<b>Mooring lines</b>	yes
<b>TV</b>	1x wheelhouse LG 43 inch and 1x saloon LG 32 inch
<b>TracVision ball</b>	Sat TV Antenne TV6 + tuner
<b>Radio</b>	Fusion MS-RA 70N
<b>Cockpit speakers</b>	yes
<b>Extra info</b>	Genius bicycle storage system in lazarette
<b>Extra info</b>	Mosquito screens for sliding door wheelhouse and saloon



# AQUANAUT EUROPEAN VOYAGER 1500





# AQUANAUT EUROPEAN VOYAGER 1500



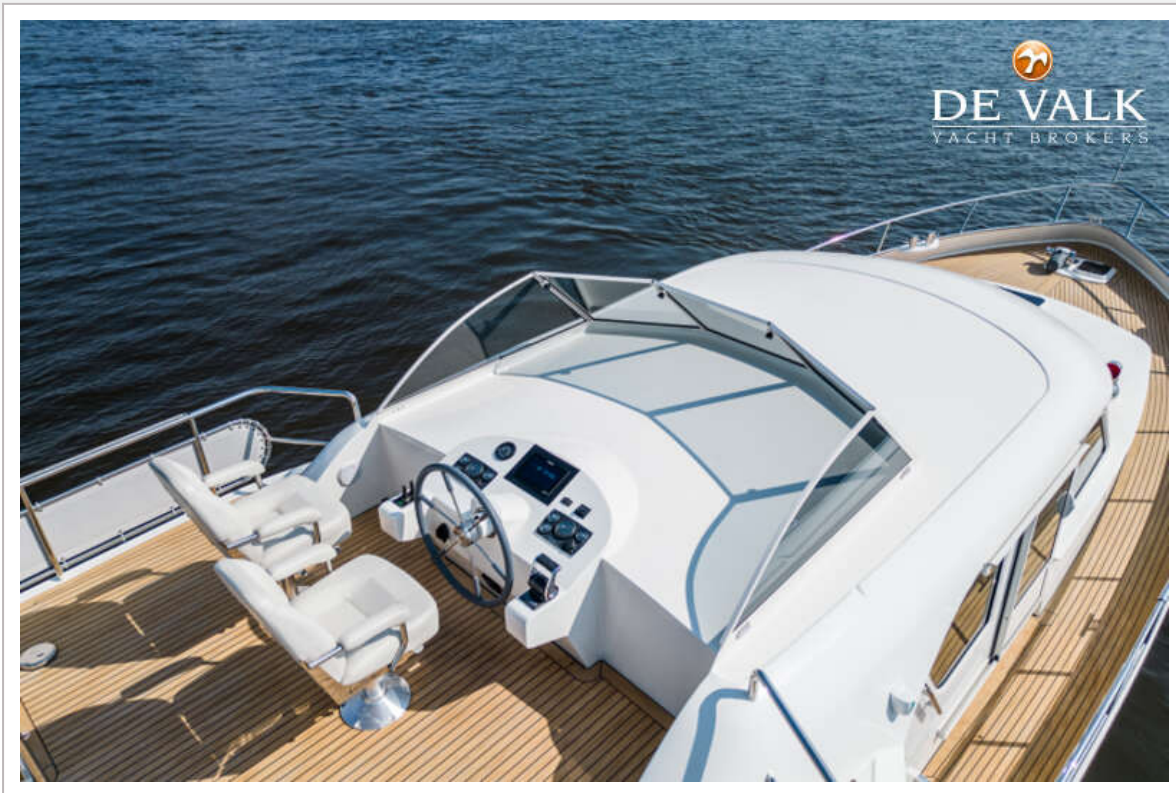
# AQUANAUT EUROPEAN VOYAGER 1500



# AQUANAUT EUROPEAN VOYAGER 1500



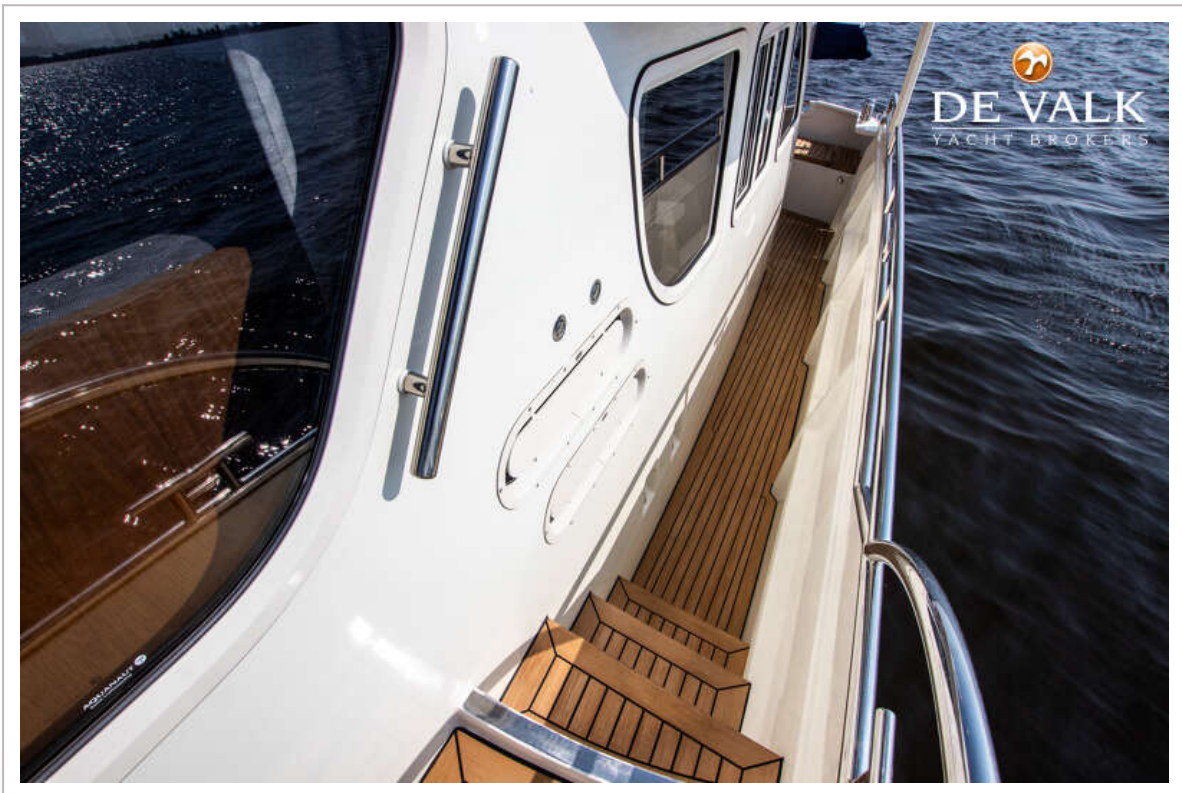
# AQUANAUT EUROPEAN VOYAGER 1500



# AQUANAUT EUROPEAN VOYAGER 1500



# AQUANAUT EUROPEAN VOYAGER 1500



# AQUANAUT EUROPEAN VOYAGER 1500

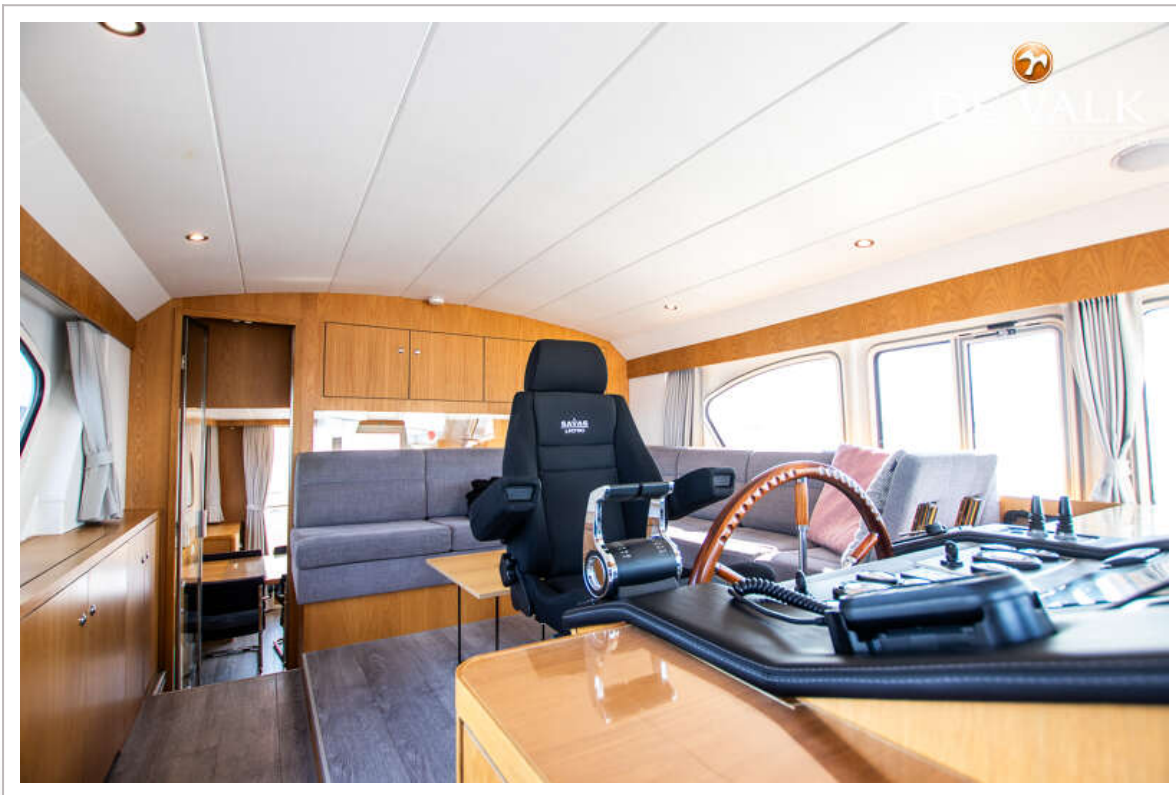
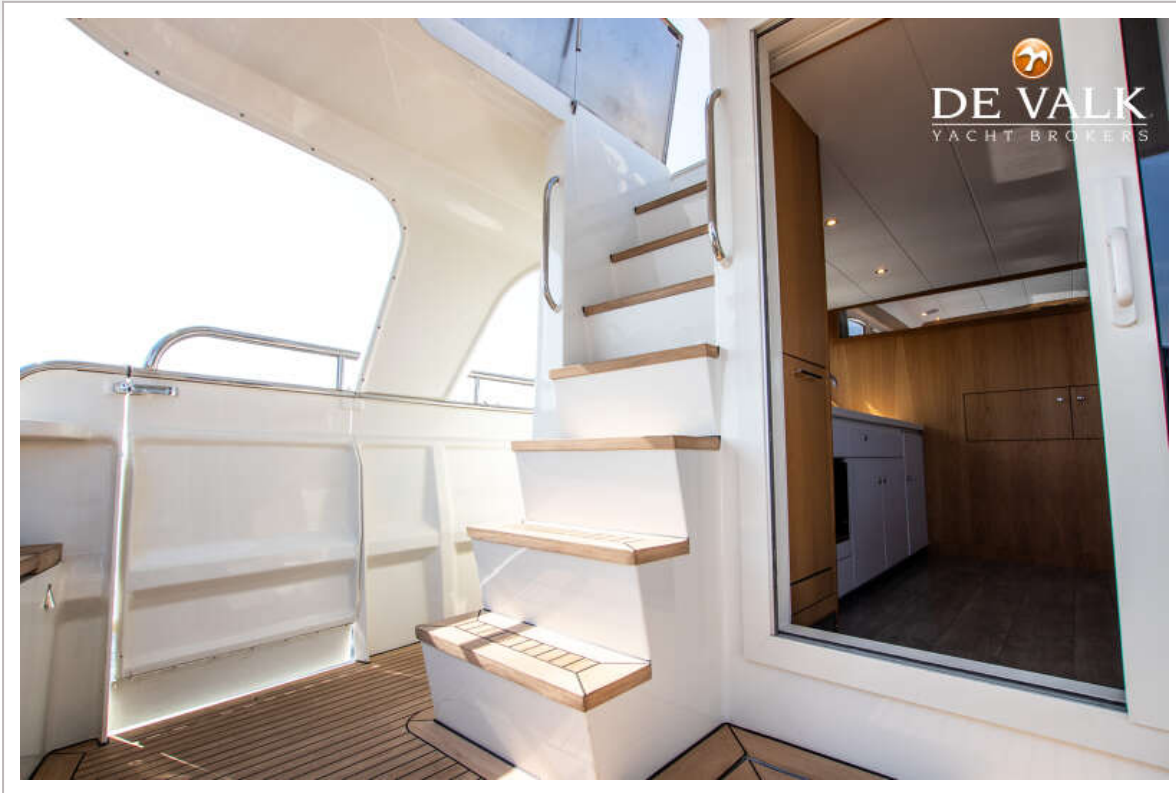


# AQUANAUT EUROPEAN VOYAGER 1500

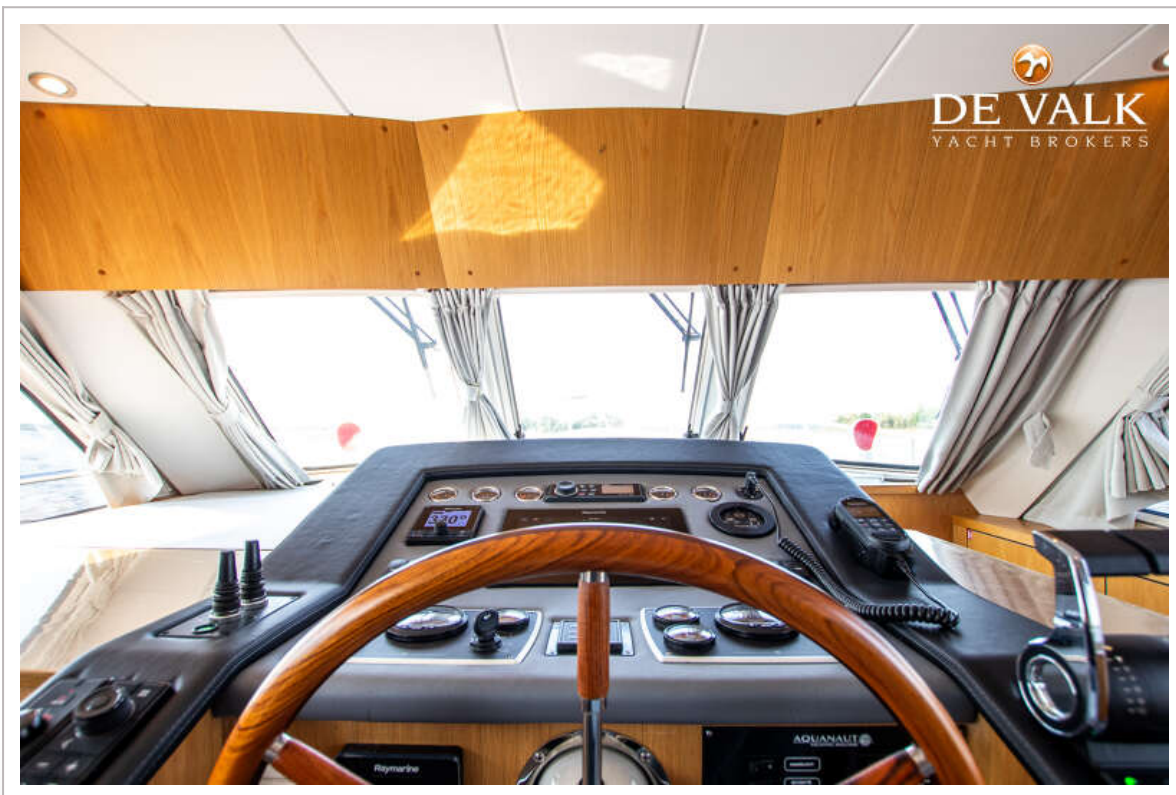
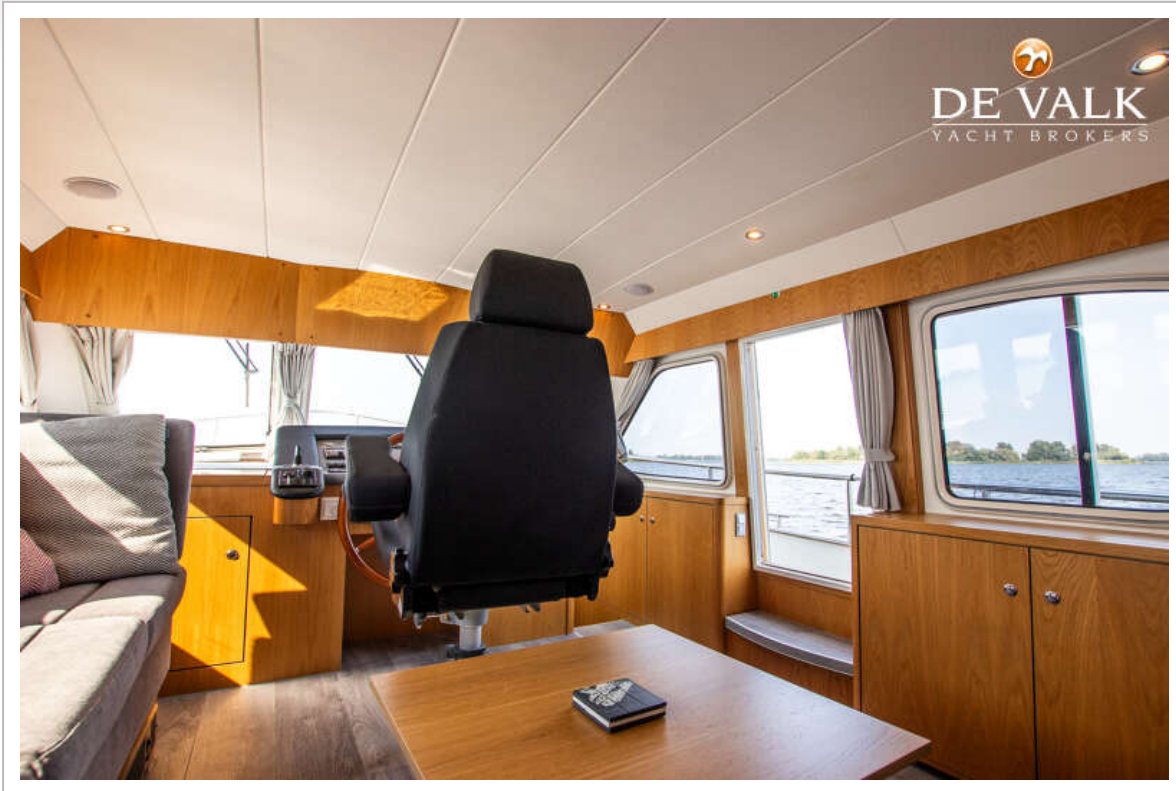




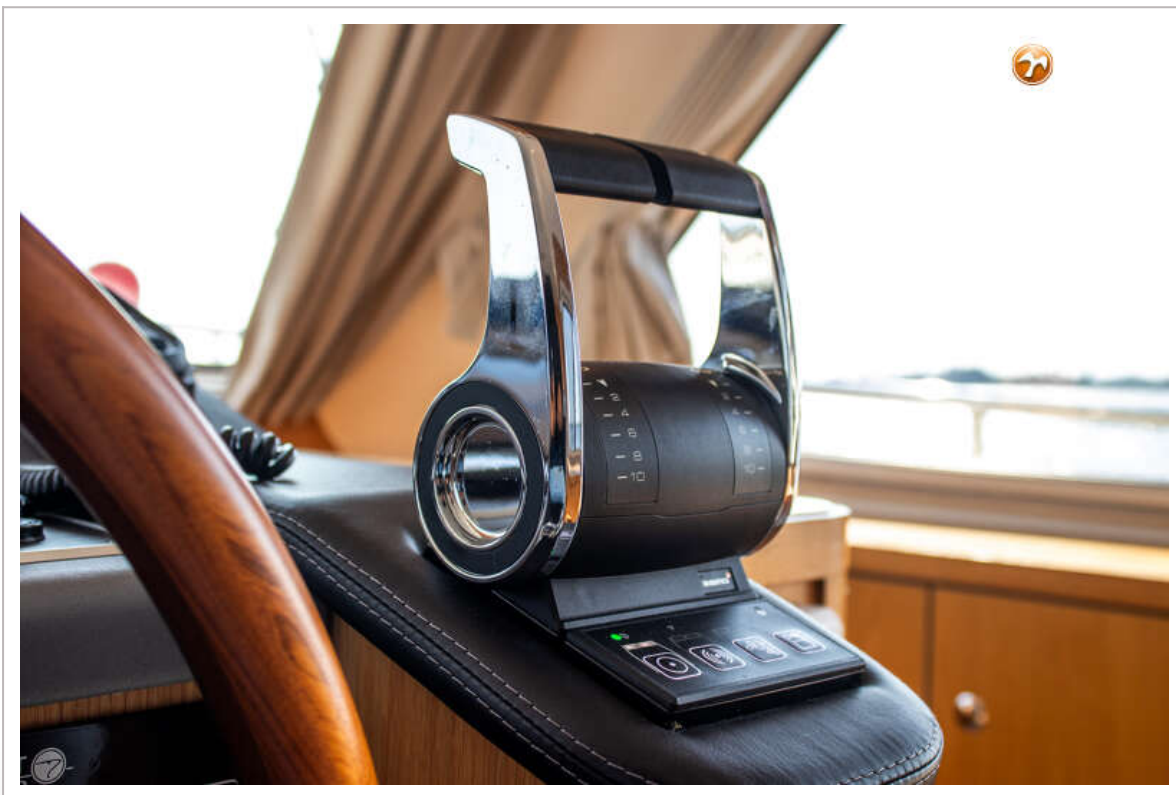
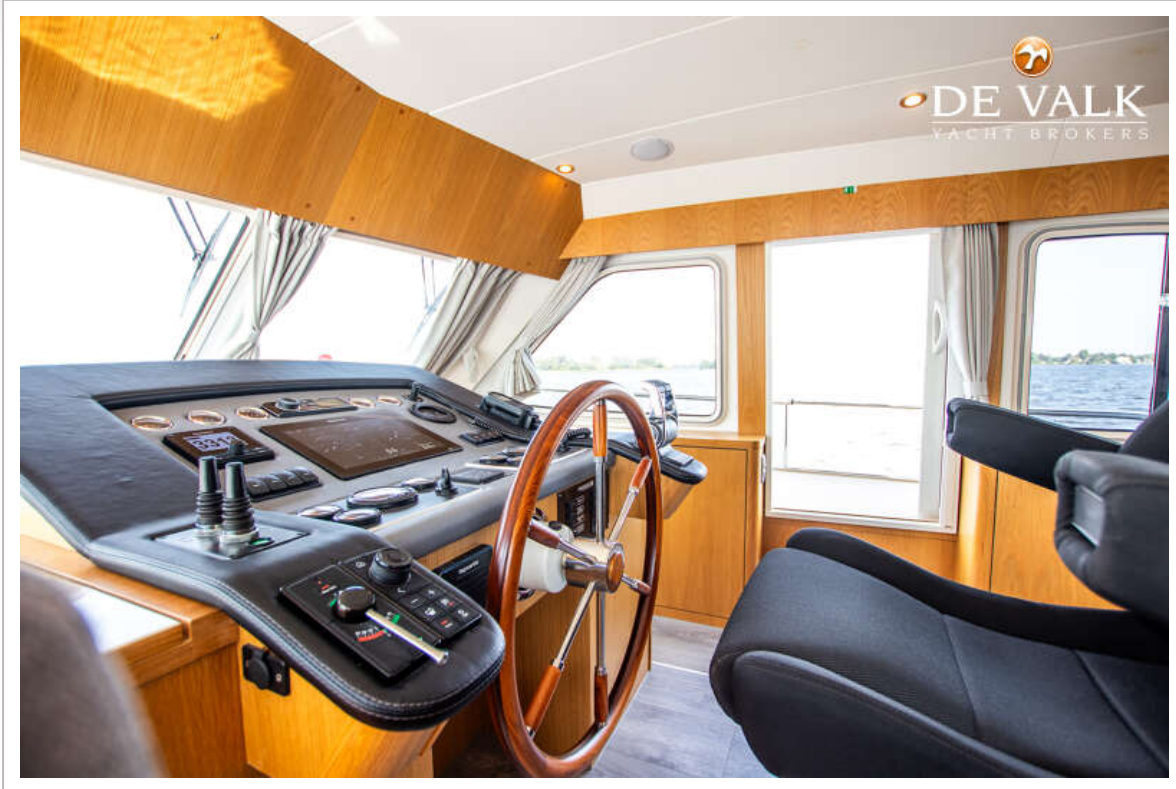
# AQUANAUT EUROPEAN VOYAGER 1500



# AQUANAUT EUROPEAN VOYAGER 1500



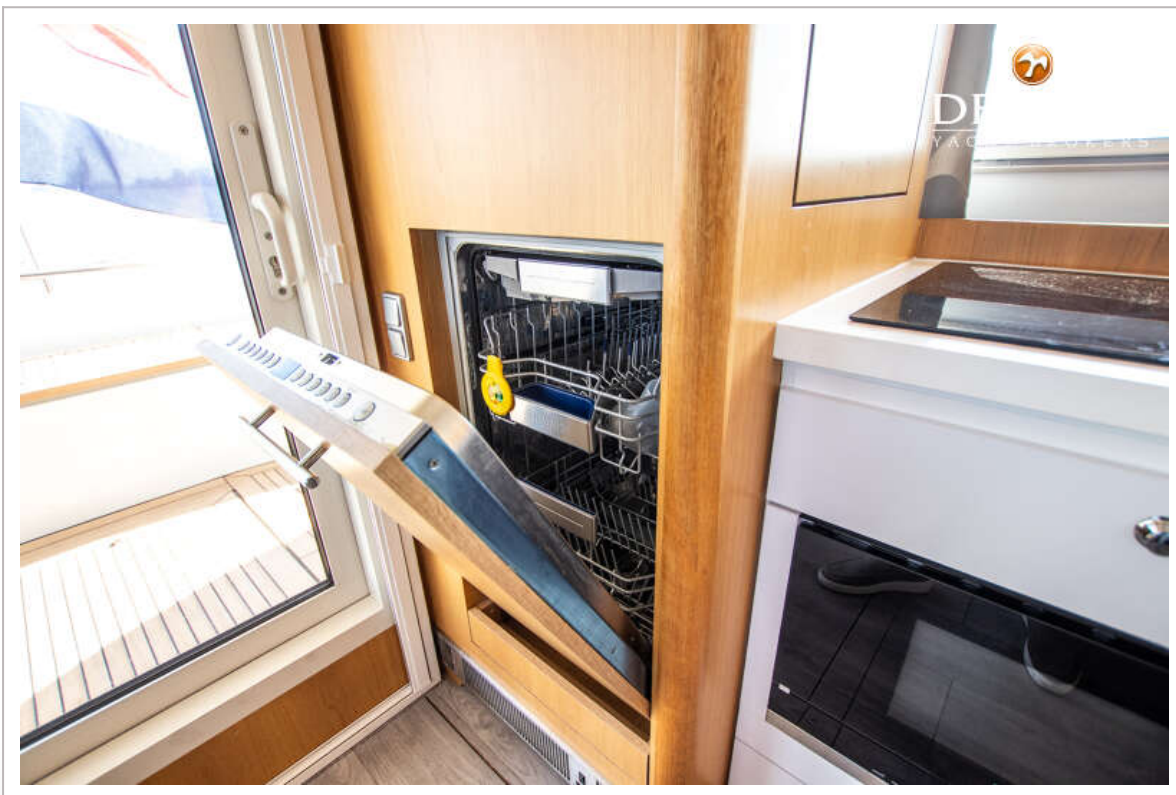
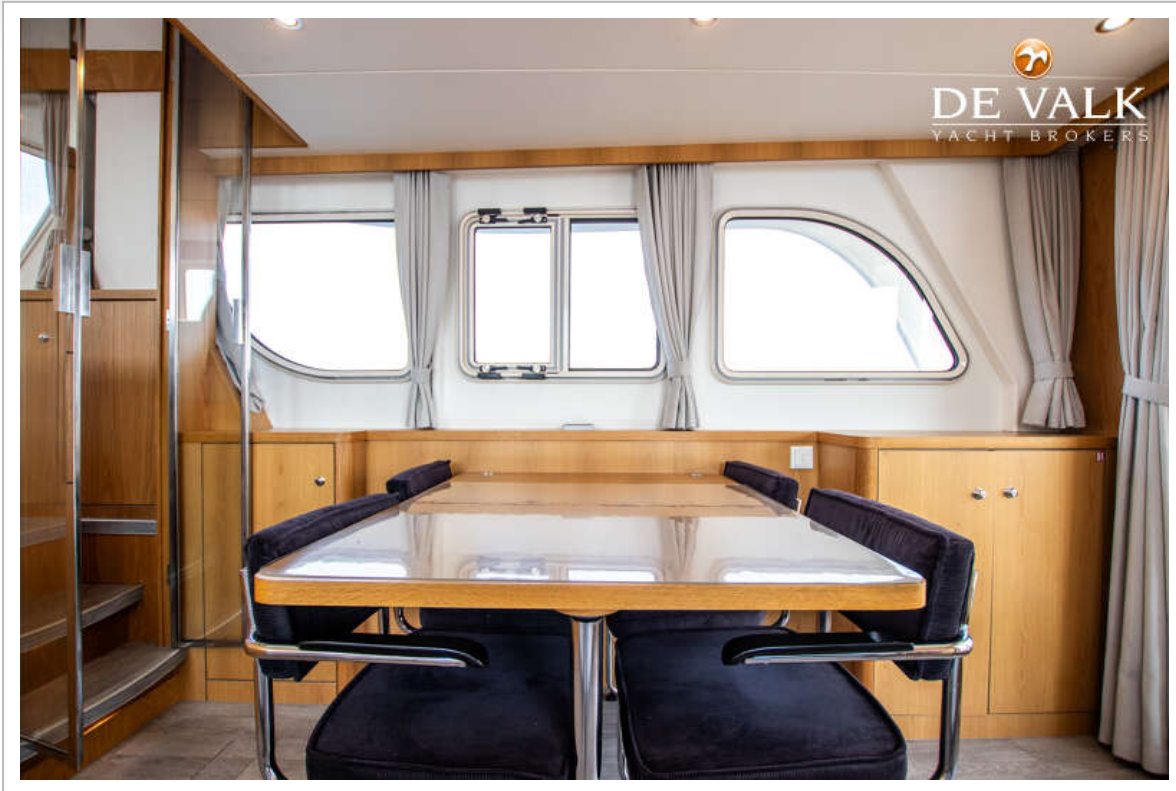
# AQUANAUT EUROPEAN VOYAGER 1500



# AQUANAUT EUROPEAN VOYAGER 1500



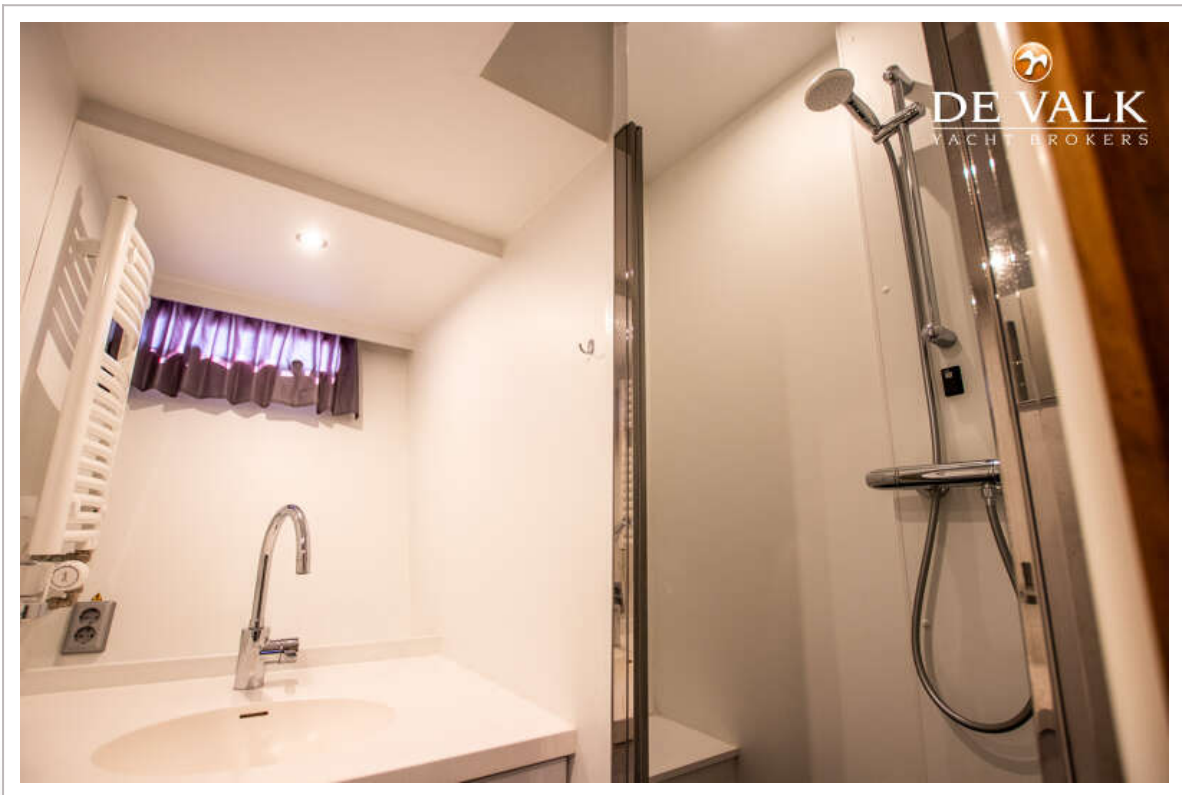
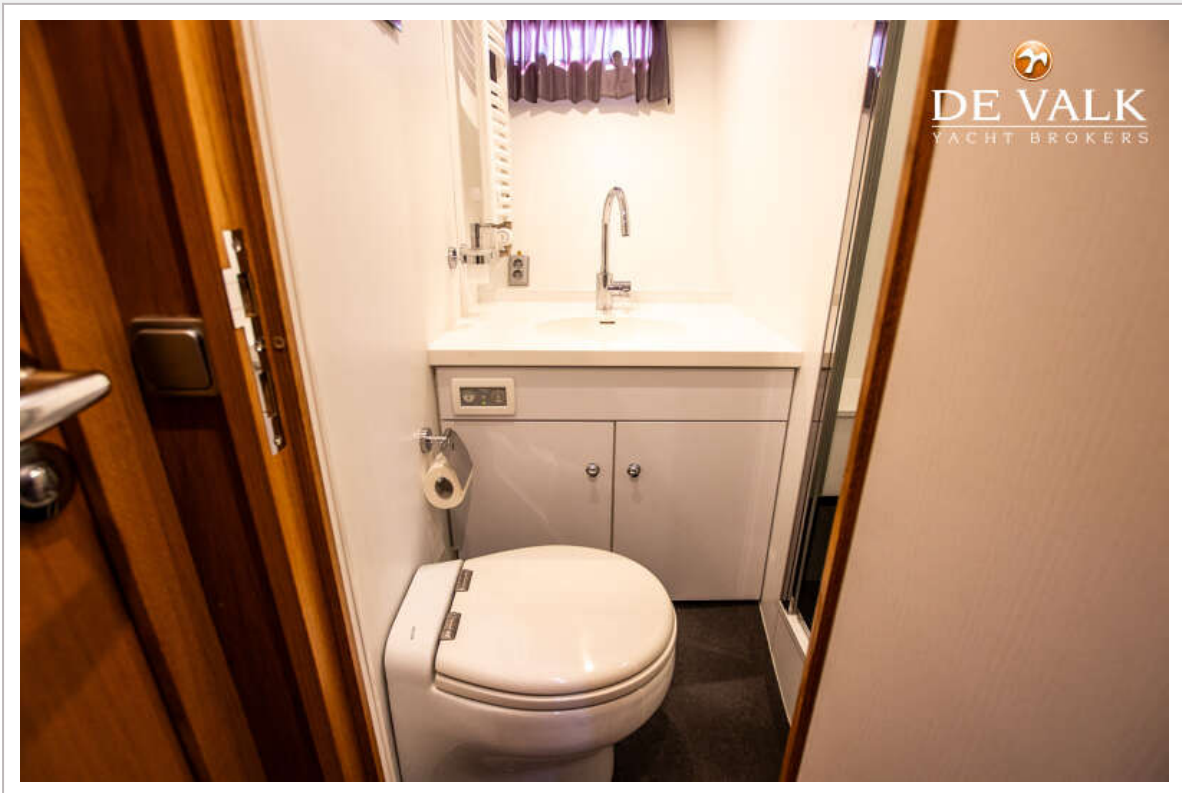
# AQUANAUT EUROPEAN VOYAGER 1500



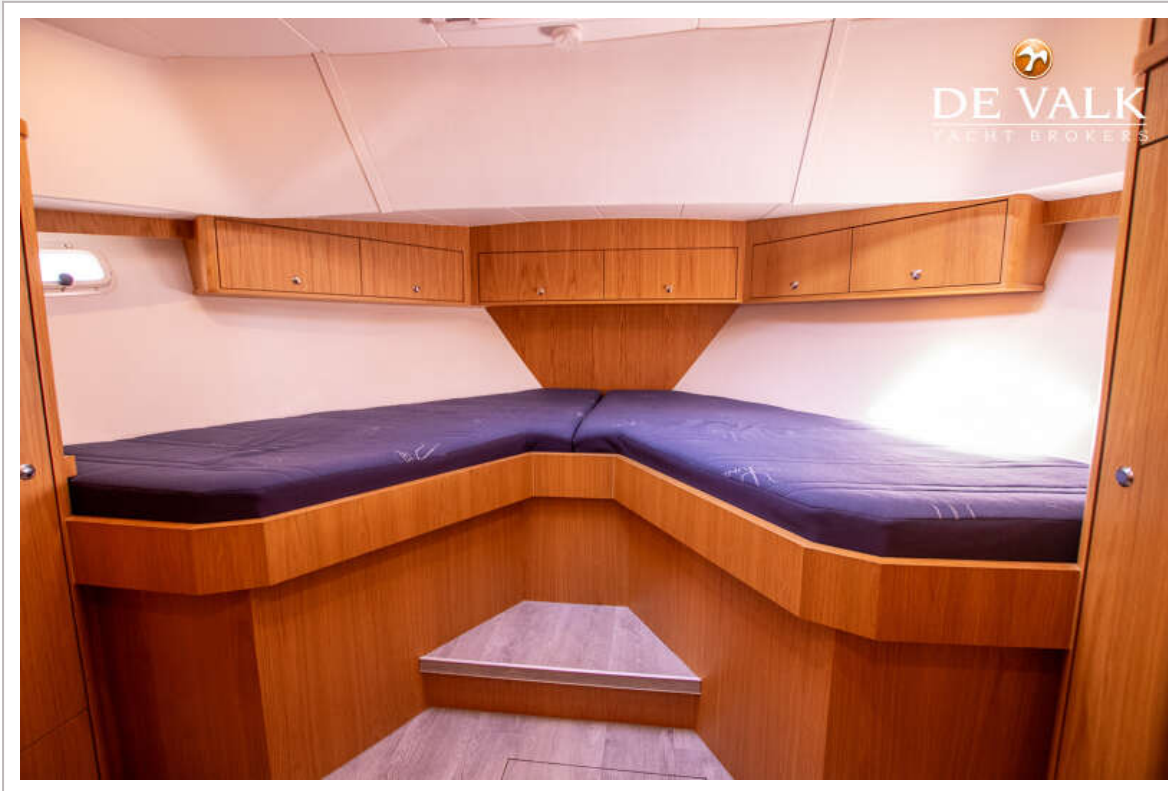
# AQUANAUT EUROPEAN VOYAGER 1500



# AQUANAUT EUROPEAN VOYAGER 1500

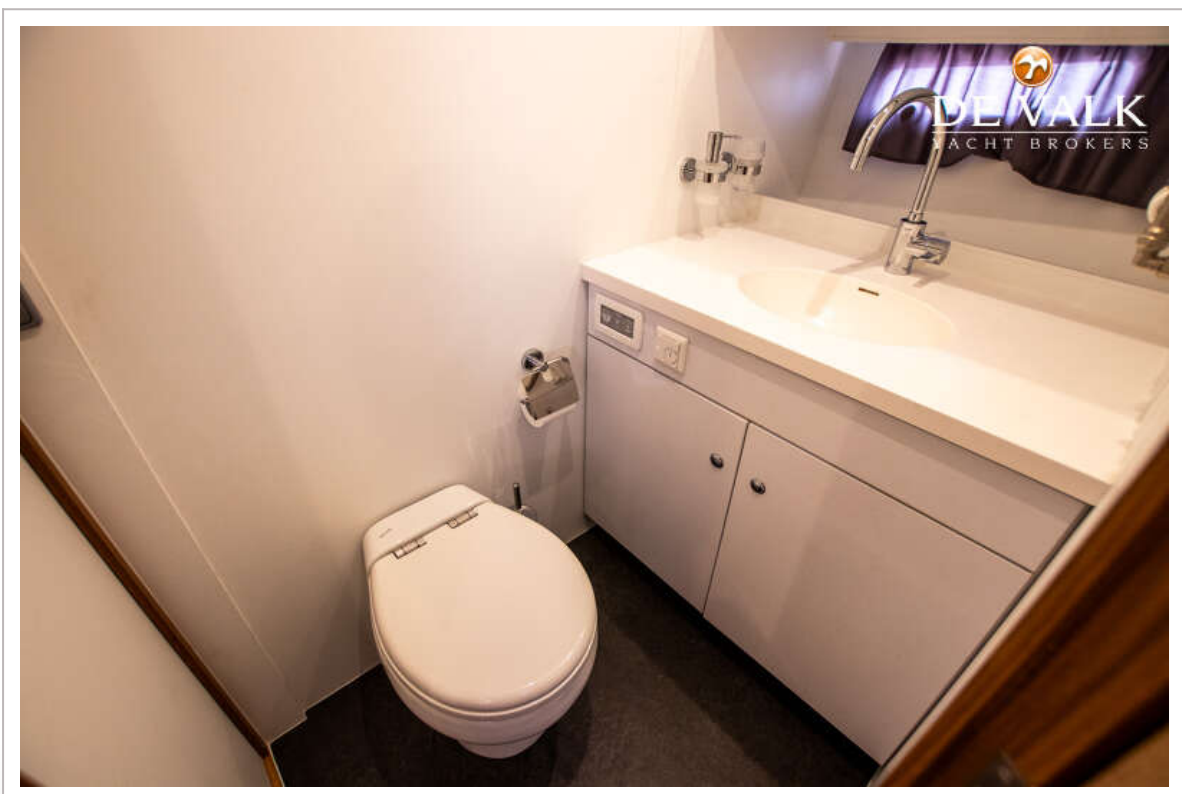
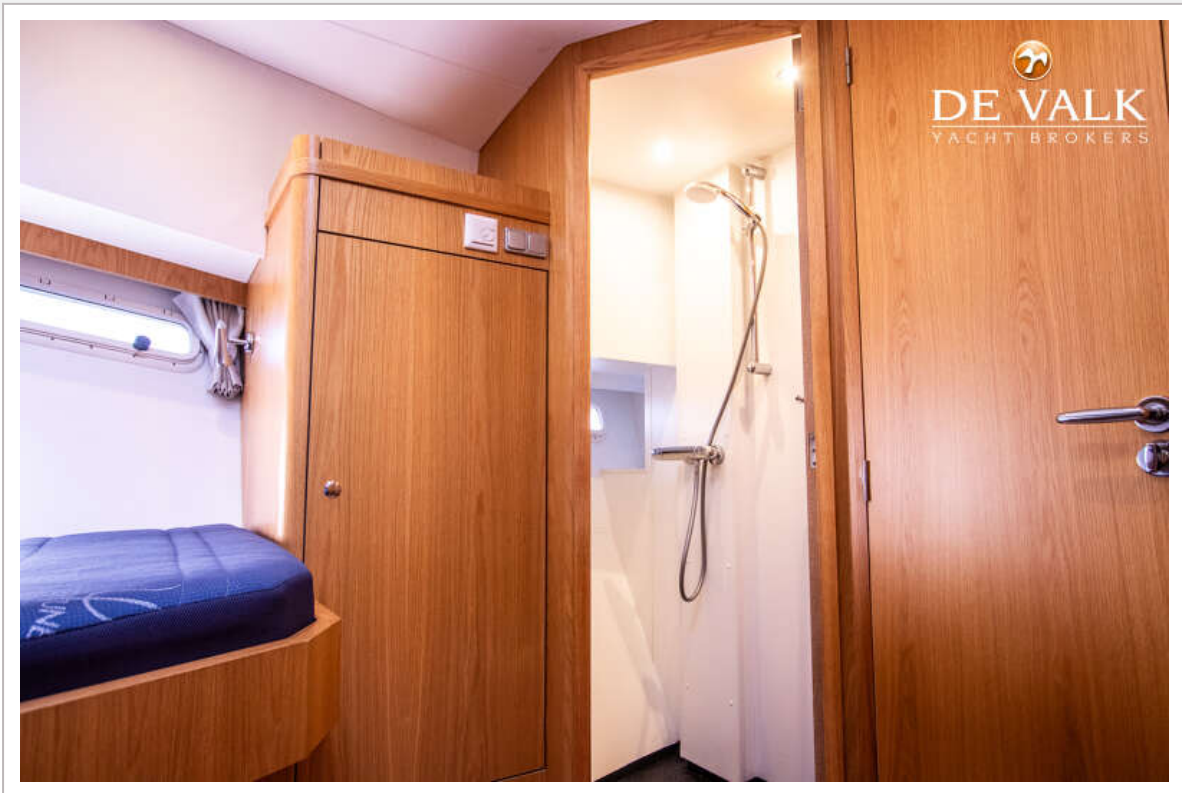


# AQUANAUT EUROPEAN VOYAGER 1500

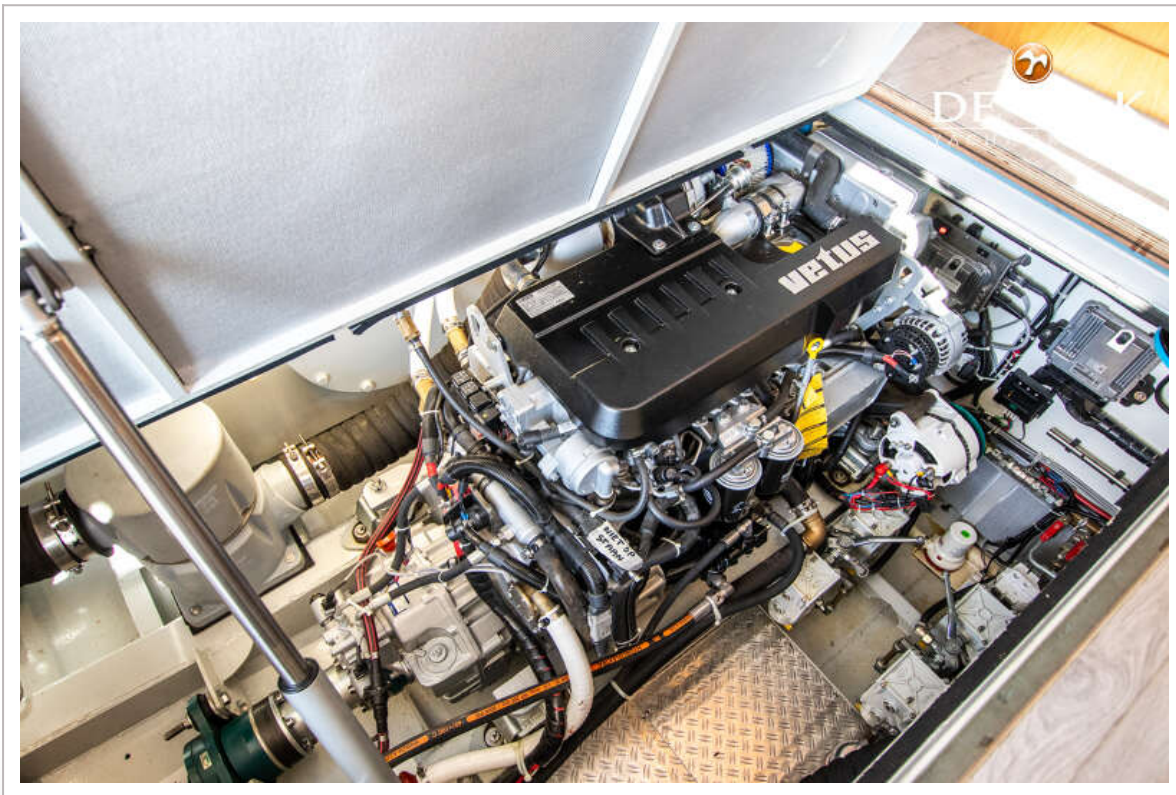
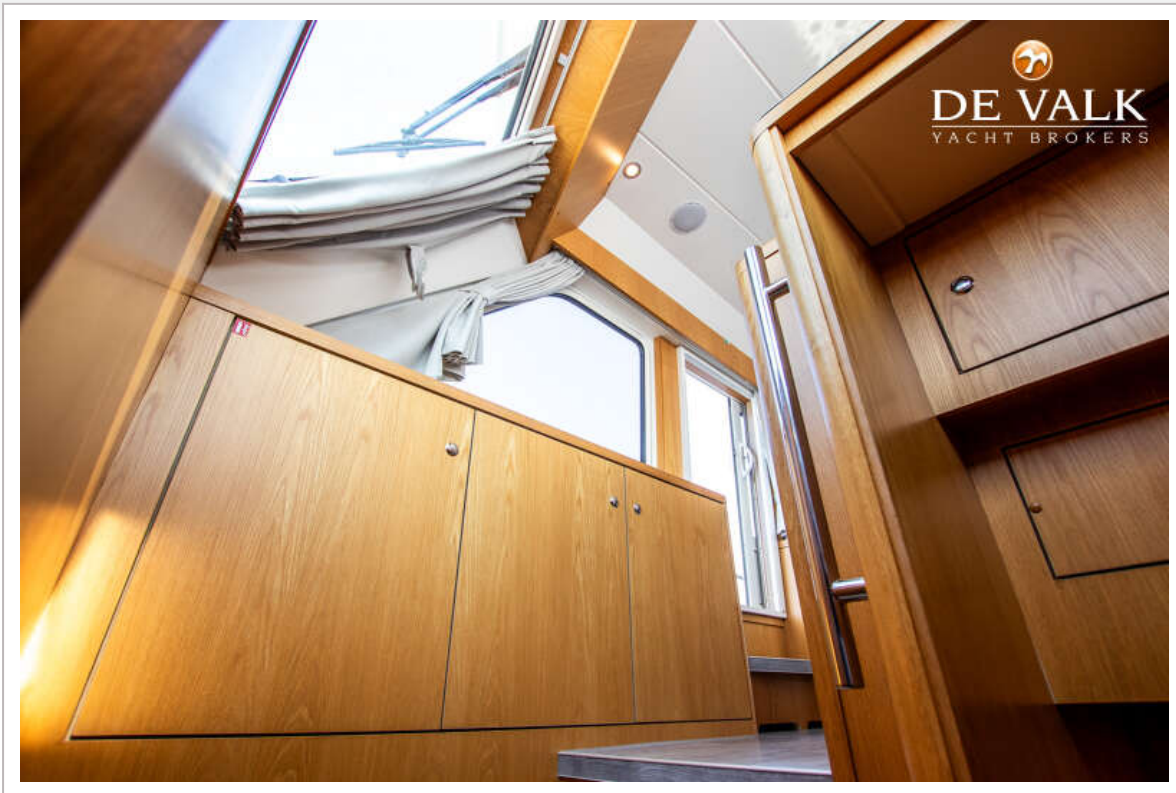




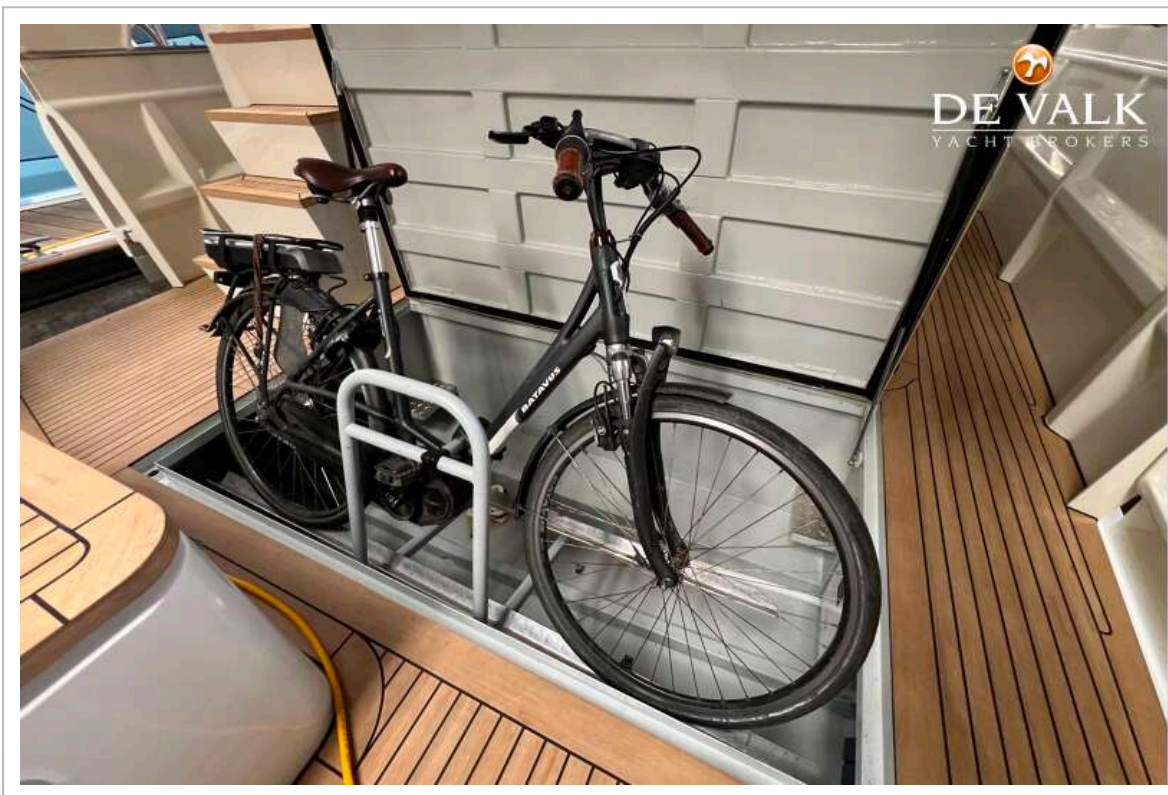
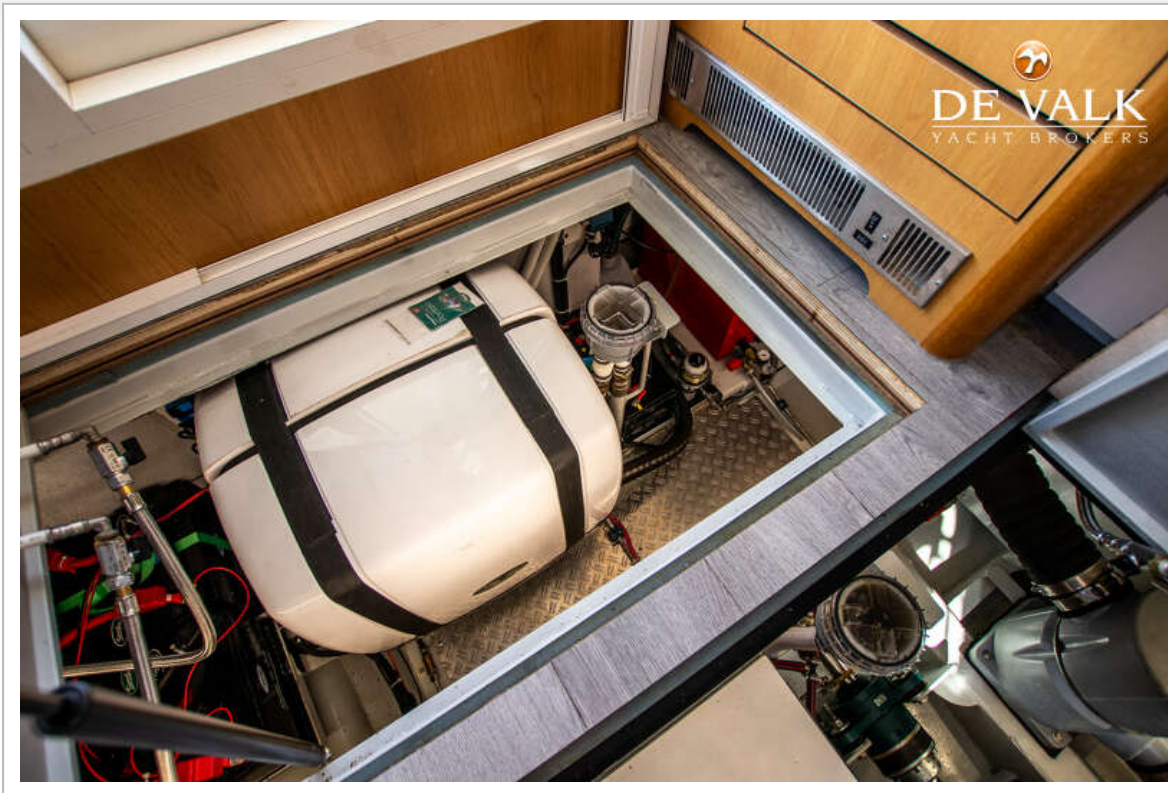
# AQUANAUT EUROPEAN VOYAGER 1500



# AQUANAUT EUROPEAN VOYAGER 1500



# AQUANAUT EUROPEAN VOYAGER 1 500



# AQUANAUT EUROPEAN VOYAGER 1500

