



DE VALK
YACHT BROKERS



TRADER 72



DE VALK
YACHT BROKERS

BROKERAGE | CHARTER | BERTHS | FINANCE | INSURANCE | YACHT MANAGEMENT

TRADER 72

BROKER'S COMMENTS

The Trader 72 "Tide Chase" is the Northern waters motor yacht and she must be seen to be appreciated. The Trader 72 "Tide Chase" is serious candidate for those looking for a large family yacht that is both capable of cruising the North sea or be used as a live aboard in port. The Trader 72 is an enlarged top model 65 delivered by tarquin to serve the european market. This yacht will soon be auctioned at Troostwijk Auctions, for more info: <https://bit.ly/3WYsj4p>

Jochem Heijermans

SPECIFICATIONS

Dimensions	21.78 x 5.64 x 1.15 (m)	Builder	Tarquin Boat Company
Built	1990	Cabins	4
Material	GRP	Berths	8
Engine(s)	2 x Caterpillar 3208 diesel	Hp/Kw	2 x 425.00 (hp), 312.80 (kw)
Asking price	sold (VAT)	Lying	elsewhere / Not at sales office

CONTACT

Sales office	De Valk Belgium	Telephone	+32 586 80 218
Address	1401 PT Nieuwpoort BE	E-mail	belgium@devalk.nl

DISCLAIMER

These particulars are given in good faith as supplied but cannot be guaranteed.



GENERAL

Model	TRADER 72
Type	motor yacht
LOA (m)	21,78
Beam (m)	5,64
Draft (m)	1,15
Headroom (m)	2,20
Year built	1990
Launched	1991
Builder	Tarquin Boat Company
Country	Taiwan
Displacement (t)	45
Hull material	GRP
Hull colour	white
Hull shape	V-shaped hull
Superstructure material	GRP
Rubbing strake	stainless steel
Deck material	GRP
Deck finish	teak
Superstructure deck finish	teak
Cockpit deck finish	teak
Antifouling (year)	2023
Window frame	aluminium
Window material	glass
Deckhatch	2
Portholes	aluminium 10
Flybridge	yes
Flybridge cockpit cover	yes
Flybridge suncover	yes
Radar arch	yes
Fuel tank (litre)	GRP Total 5200 liter in 4 tanks



Level indicator (fuel tank)	yes
Freshwater tank (litre)	GRP Total 1800 liter in 4 tanks
Level indicator (freshwater)	yes
Blackwater tank (litre)	GRP
Level indicator (blackwater)	yes
Blackwater tank extraction	pump
Greywater tank (litre)	GRP
Level indicator (greywater)	yes
Wheel steering	hydraulic
Inside helm position	yes
Outside helm position	hydraulic On aft deck for for parking
Flybridge helm position	hydraulic
Emergency tiller	yes

ACCOMMODATION

Cabins	4
Berths	8
Crew cabin	1
Crew berths	2
Interior	teak
Layout	Private with crew
Floor	teak and holly Carpet over
Aft deck	yes
Pilot house	yes
Deck saloon	yes
Headroom saloon (m)	2,20
Heating	electric 220V 4 x Plinth in master, salon and wheelhouse
Air-conditioning	reverse cycle airco Aircon with 3 compressors and fan coils in every cabin
Navigation center	In pilot house
Aft Cabin	yes



Dining room	yes
Sliding door to aft deck	yes
Galley	Countertops opposit each other
Countertop	wood
Sink	stainless steel Double
Cooker	4 burner electric (new)
Oven	New
Extractor	yes
Gas alarm	yes
Microwave	yes
Fridge	yes
Freezer	yes
Hot water system	220V + engine
Water pressure system	yes
Crockery	yes
Owners cabin	French bed Center sleeper
Bed length (m)	1,60 x 2,00
Wardrobe	hanging/drawers/shelves
Bathroom	en suite
Toilet	en suite
Toilet system	electric Tecma
Wash basin	in the bathroom 1 x separate & 1 x at the toilet
Shower	en suite Separate in the bath
Bath tub	en suite Separate
Guest cabin 1	French bed VIP cabin SB aft
Bed length (m)	1,40 x 2,00
Wardrobe	hanging/drawers/shelves
Bathroom	en suite
Toilet	en suite
Toilet system	electric Tecma
Wash basin	in the bathroom
Shower	en suite Separate



Guest cabin 2	twin single Port aft
Bed length (m)	2,00 x 0,80
Wardrobe	hanging and shelves
Bathroom	en suite Also used as dayhead
Toilet	en suite
Toilet system	electric Tecma
Wash basin	in the bathroom
Shower	en suite
Guest cabin 3	bunk bed Starbord center
Bed length (m)	2,00 x 0,70
Wardrobe	hanging and shelves
Bathroom	en suite
Toilet	en suite
Toilet system	electric Tecma
Wash basin	in the bathroom
Shower	en suite
Crew cabin(s)	2 beds 1 over the other In the bow
Bathroom (crew)	en suite
Toilet (crew)	en suite
Toilet system	manual ITT
Wash basin	in the bathroom
Shower (crew)	en suite
Washing machine	2023
Flybridge	yes
Wet bar	yes

MACHINERY

No of engines	2
Make	Caterpillar
Type	3208
HP	425



kW	312.80
Fuel	diesel
Maximum speed (kn)	14
Cruising speed (kn)	10
Consumption (l/hr)	40
Engine hours	Ca 2350
Engine cooling system	freshwater heat exchanger Acid flushed 2017
Drive	shaft
Shaft seal	yes
Engine controls	hydraulic
Gearbox	hydraulic
Bowthruster	hydraulic 26 HP dual speed (2006)
Sternthruster	hydraulic 26 hp dual speed (2006)
Exhaust	watercooled
Thrust bearing	yes
Propeller type	fixed Bronze (2006)
Propeller blades	4
Propeller shaft material	stainless steel
Shaft lubrication	water
Manual bilge pump	yes
Electric bilge pump	yes
Bilge alarm	yes
Electrical installation	12 & 24 V DC and 220 V AC
Generator	Lister petter 13,5 kw
Batteries	yes
Start battery	2 x 220 AH 12 V 2016
Service battery	4 x 12 V 200 Ah for 400 Ah 24 V (2016)
Generator battery	1 x 12 V 90 Ah 2016
Battery monitor	yes
Battery charger	yes
Inverter	yes
Solar panel	yes



Diode battery combiners	yes
Shorepower	yes
Stabilizers	fin Vetus (2006~) hydraulic
Trimtabs	yes
Extra info	Engine exhausts replaced 2011

NAVIGATION

Compass	yes
Depth sounder	Stowe
Log	Stowe
VHF	Standard Horizon 9x2200E
Autopilot	Simrad
Radar	Furuno dual station dual station
GPS	Garmin & GPS 128
Plotter	Garmin 7"echo map 70 S
Navtex	Clipper
Electronic chart(s)	yes
EPIRB	Needs service
Camera	Need service
Navigation lights	yes
Loudhailer	yes

EQUIPMENT

Fixed windscreen	yes
Fixed hardtop	yes
Cockpit cover	yes
Dodger	yes
Sun awning	yes
Cockpit cushions	yes
Cockpit table	yes
Cockpit chairs	yes



Bathing platform	yes
Boarding ladder	yes
Transom door	yes
Gangway	Hydraulic
Deck shower	yes
Anchor	Bruce Stainless steel
Anchor chain	50 M.
Windlass	electrical
Capstan	electrical Lofrans Monza Italy for mooring
Windlass aft	electrical For mooring
Dinghy	Wetline 2,3 M
Outboard	4 hp Tohatsu
Deck crane	hydraulic
Sea railing	yes
Grab rail (superstructure)	yes
Railing side opening gates	yes
Pushpit	yes
Pulpit	yes
Life raft	container 1 needs service
Life raft (pers)	container 1 x Wetline WL04-090125 4 pers
Last life raft survey	Wetline due 06-2026
Lifejackets	Various
Lifebuoy	yes
Danbuoy	yes
Rope cutter	yes
Wiper	3 x
Horn	yes
Fenders	yes
Mooring lines	yes
Spare parts	yes
Tools	yes
Alarm system	yes



TV	Total 3 x from 22-37 inch
Radio	yes
Radio-cd player	yes
DVD player	yes
Speakers in salon	yes
Clock - barometer	yes
Fire extinguisher	yes

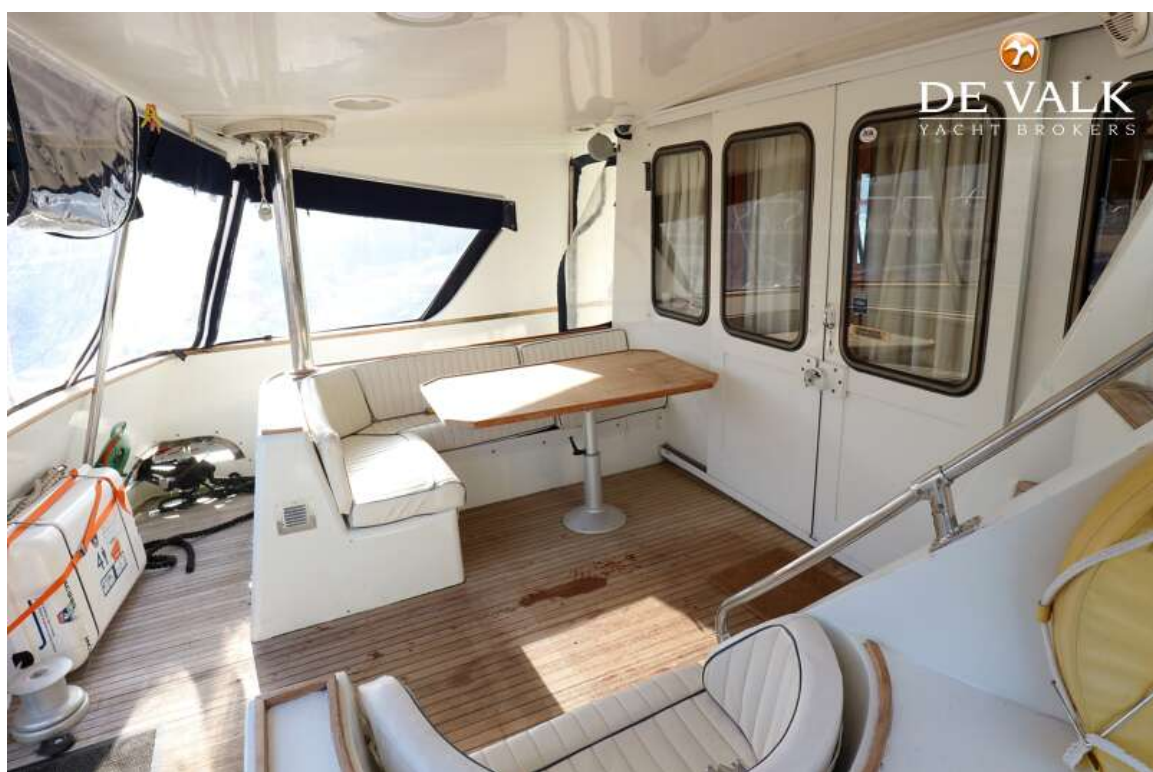


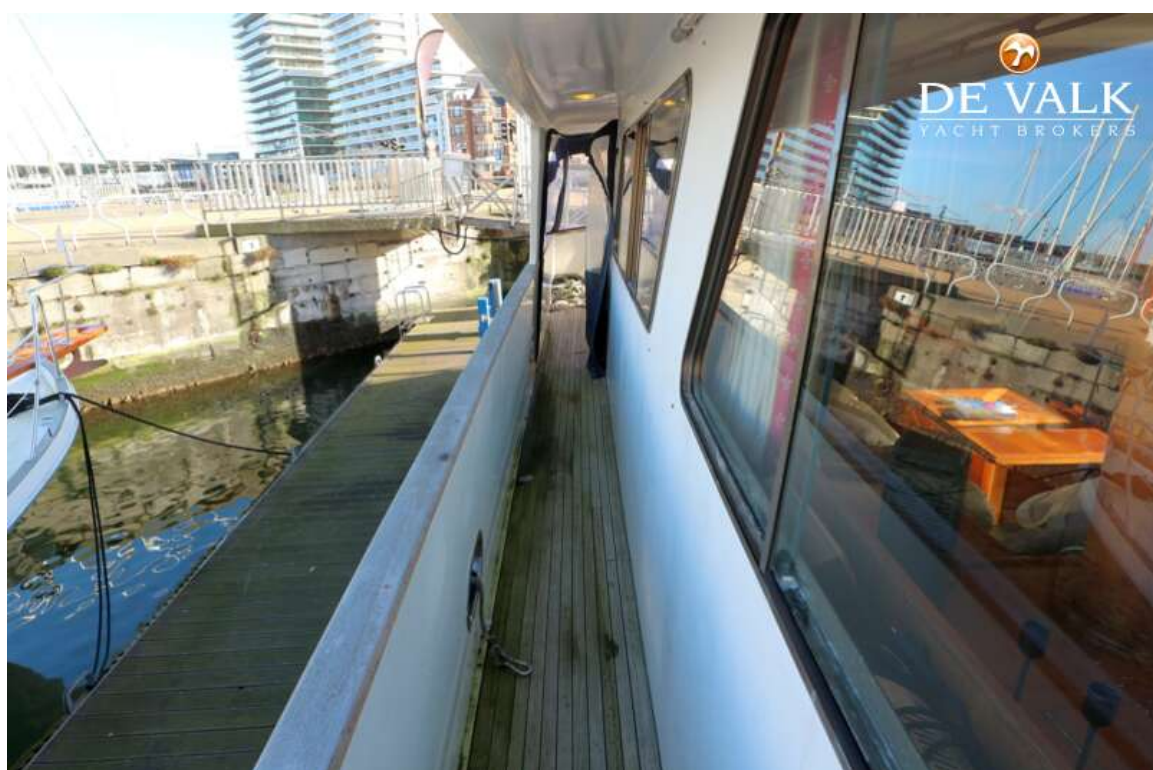
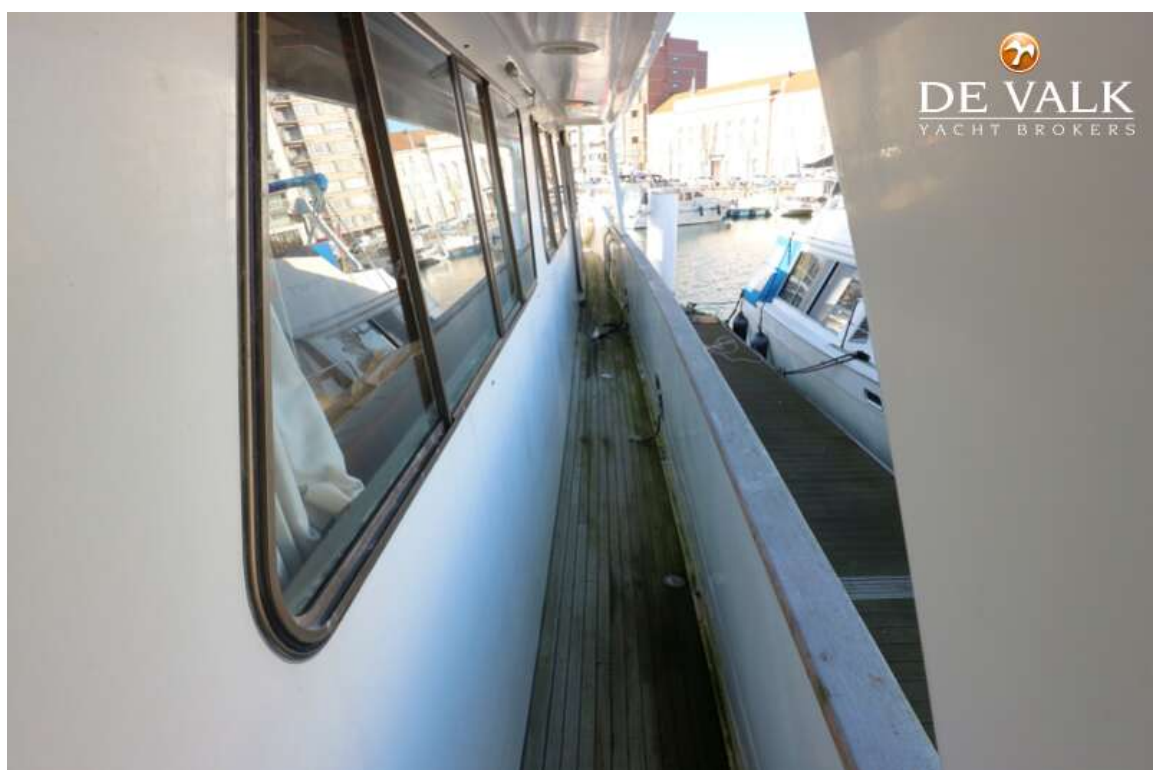
TRADER 72





TRADER 72

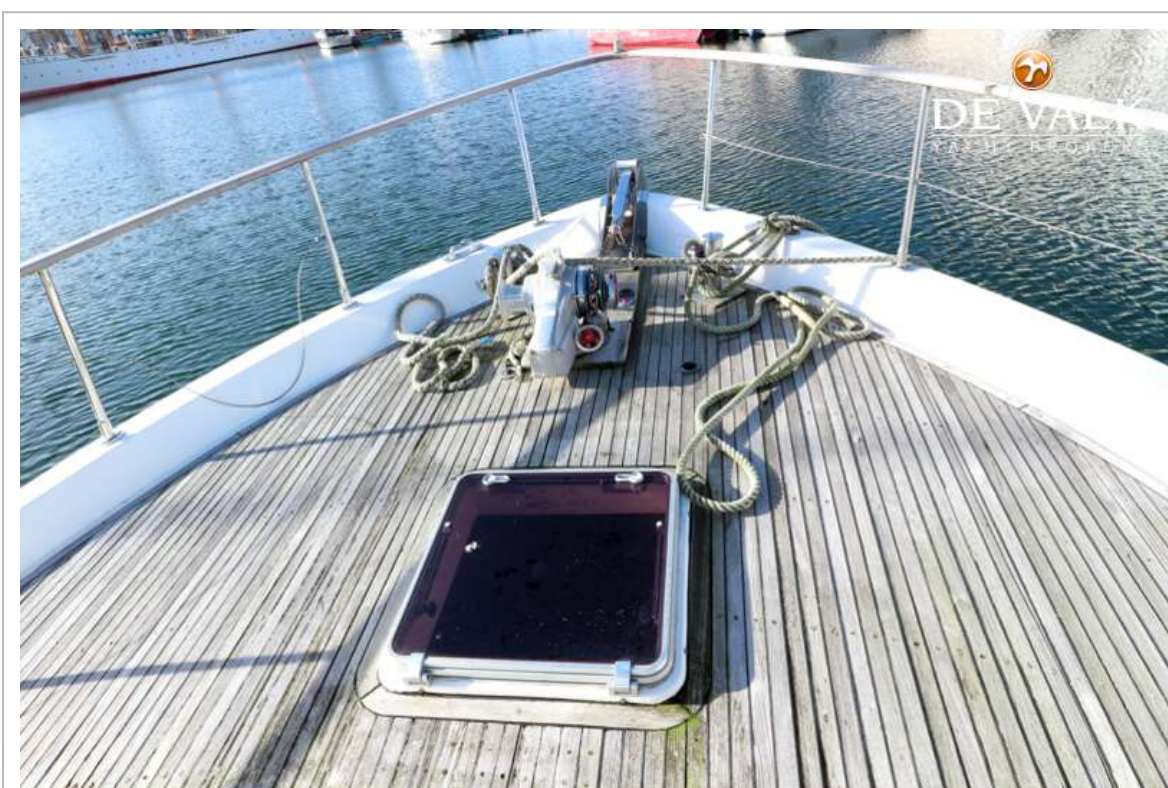


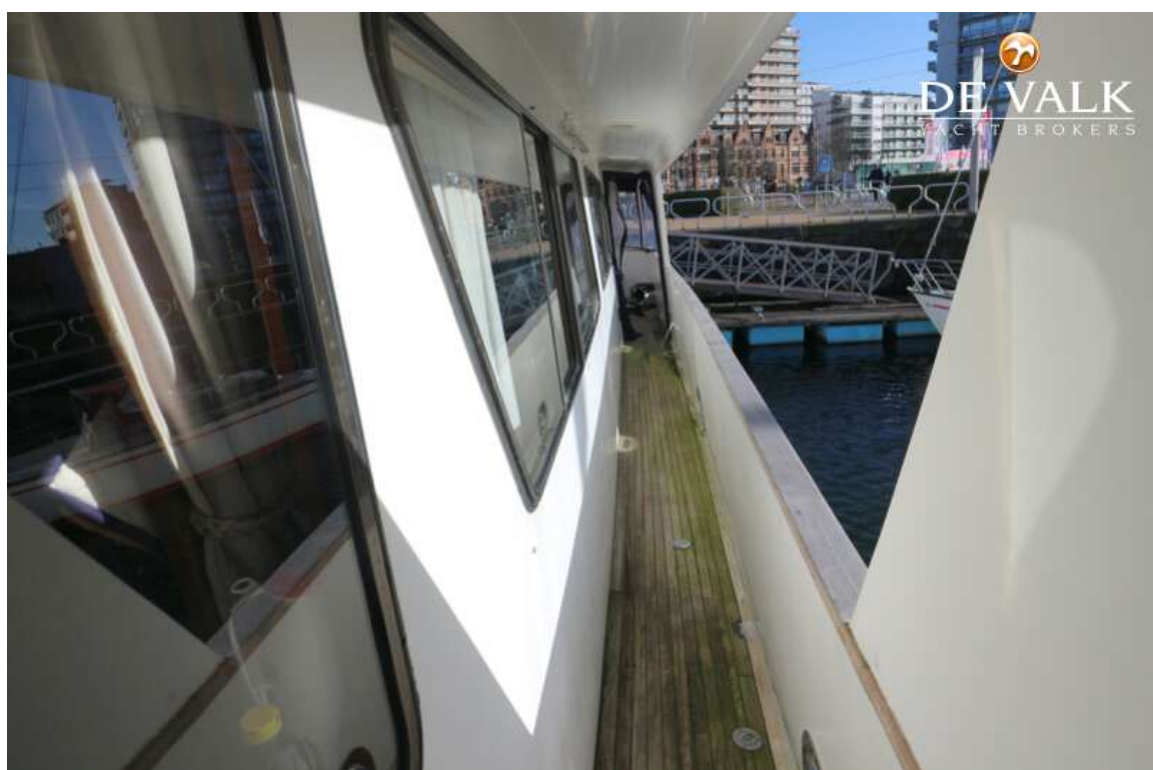


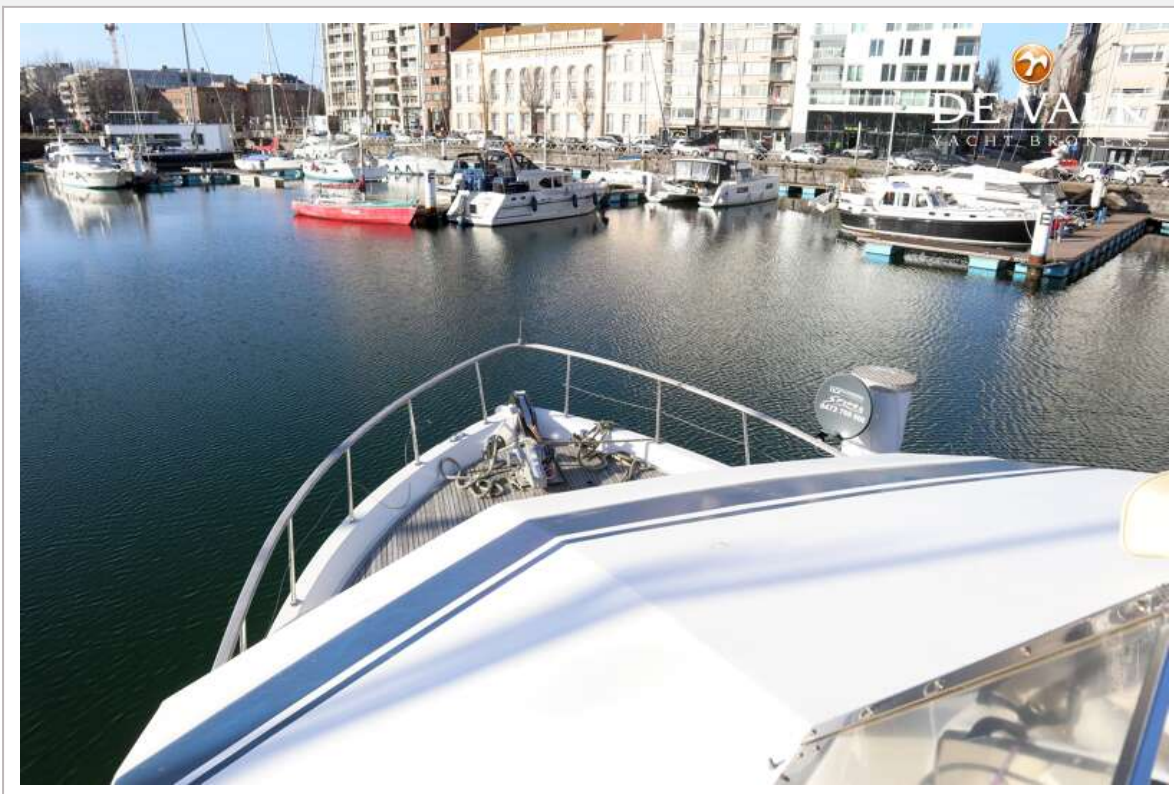
TRADER 72



TRADER 72



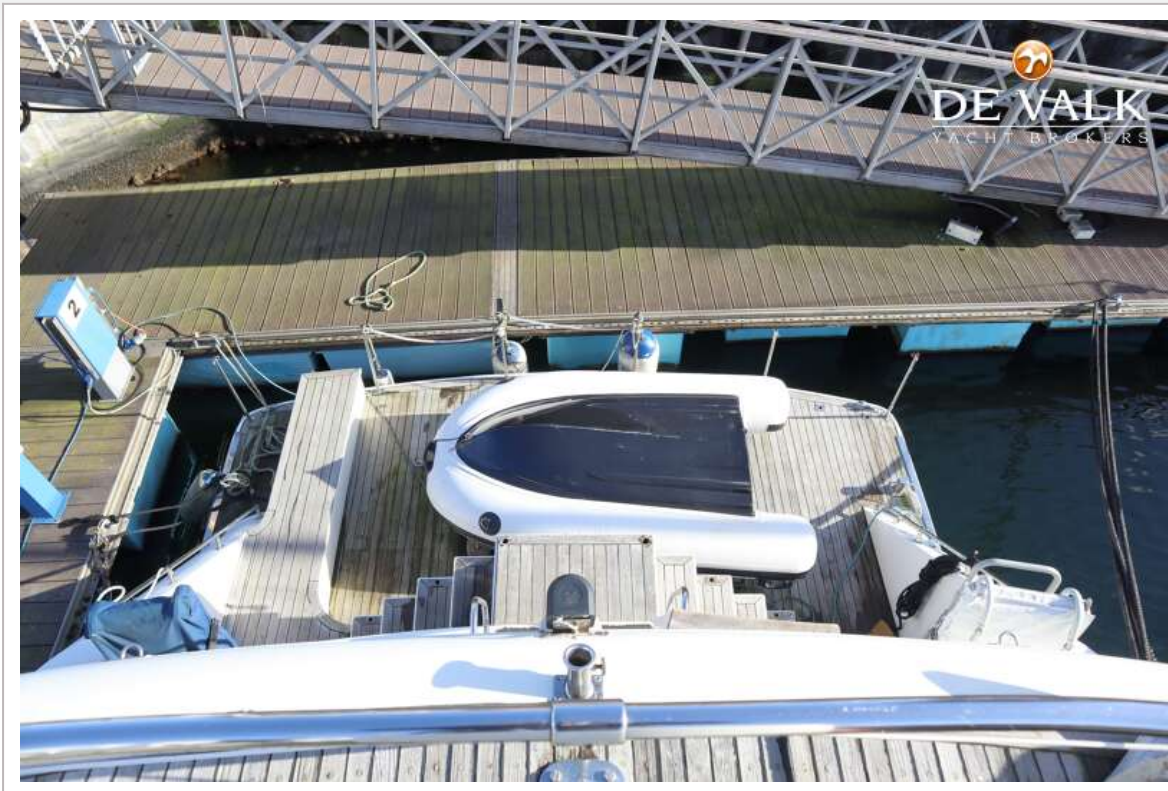




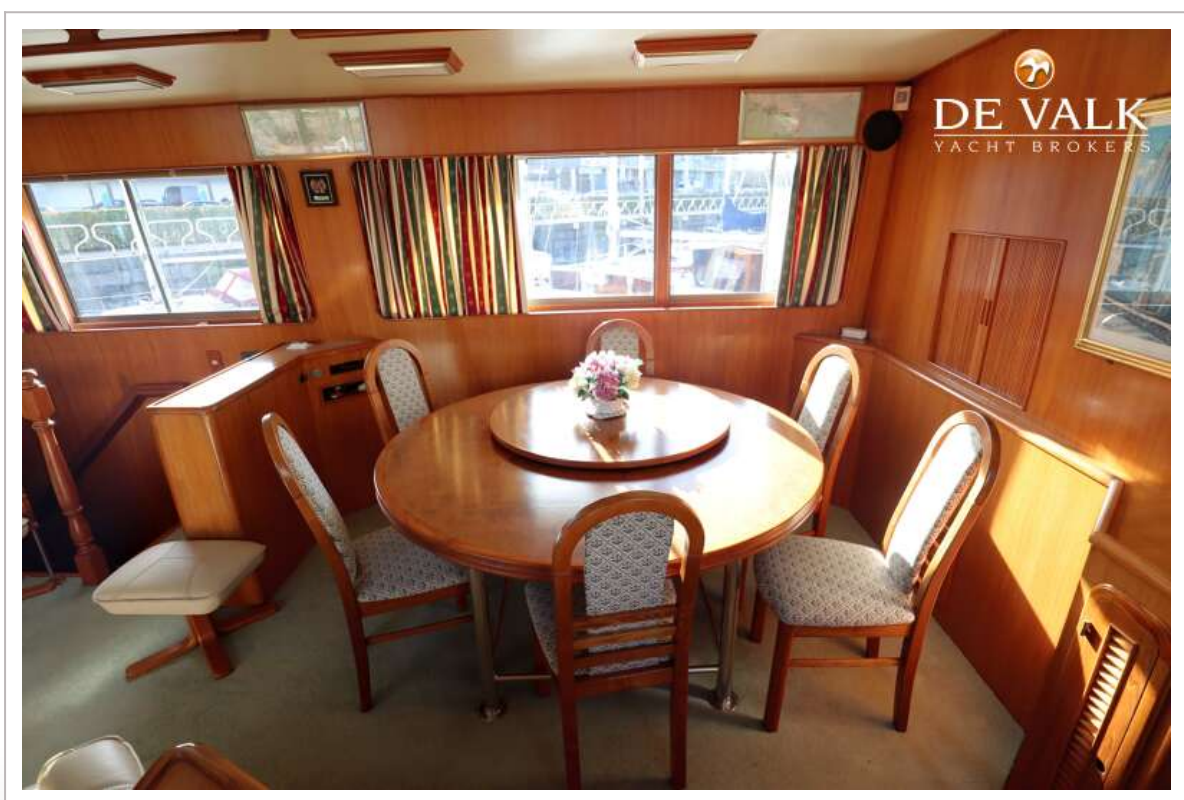
TRADER 72



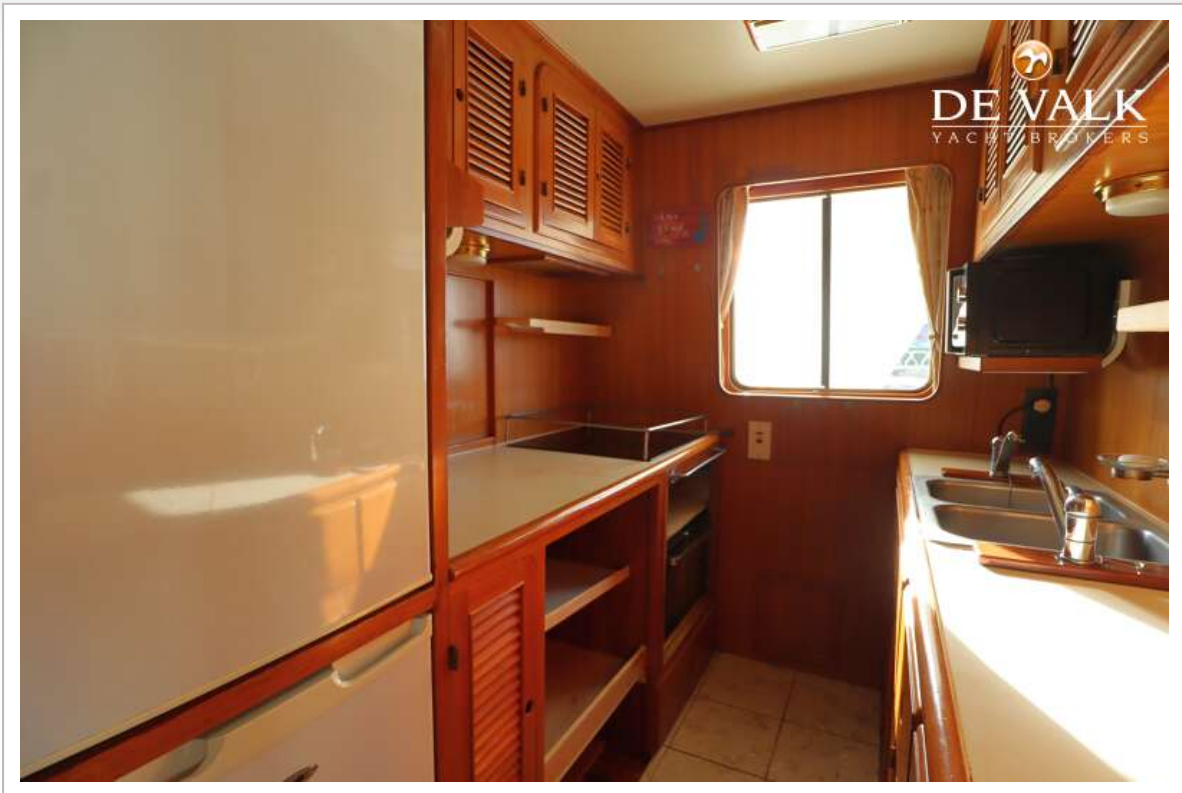
TRADER 72



TRADER 72



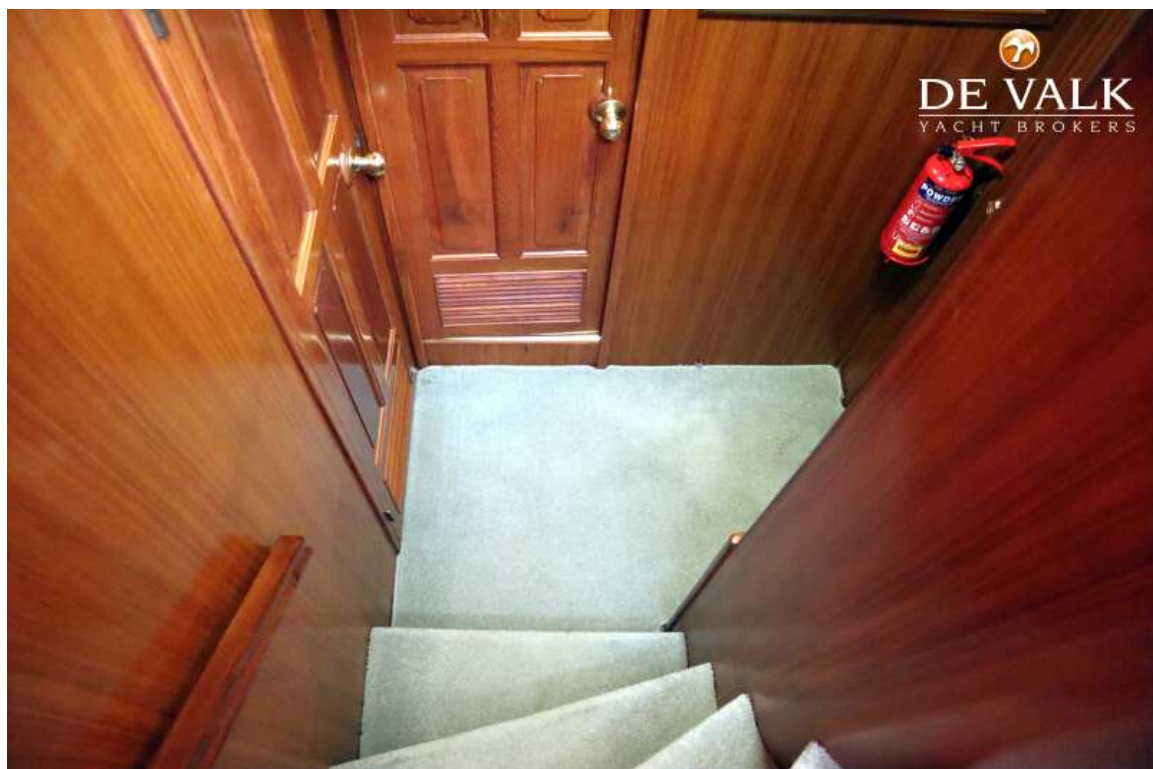
TRADER 72



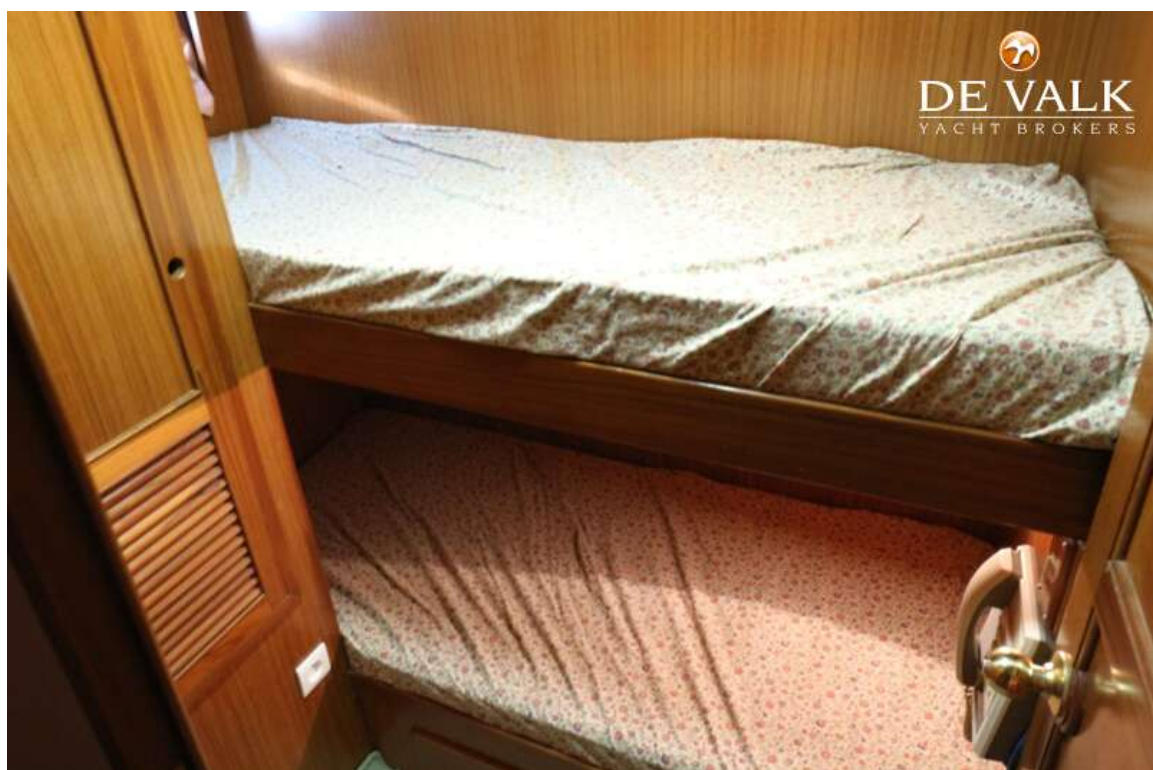
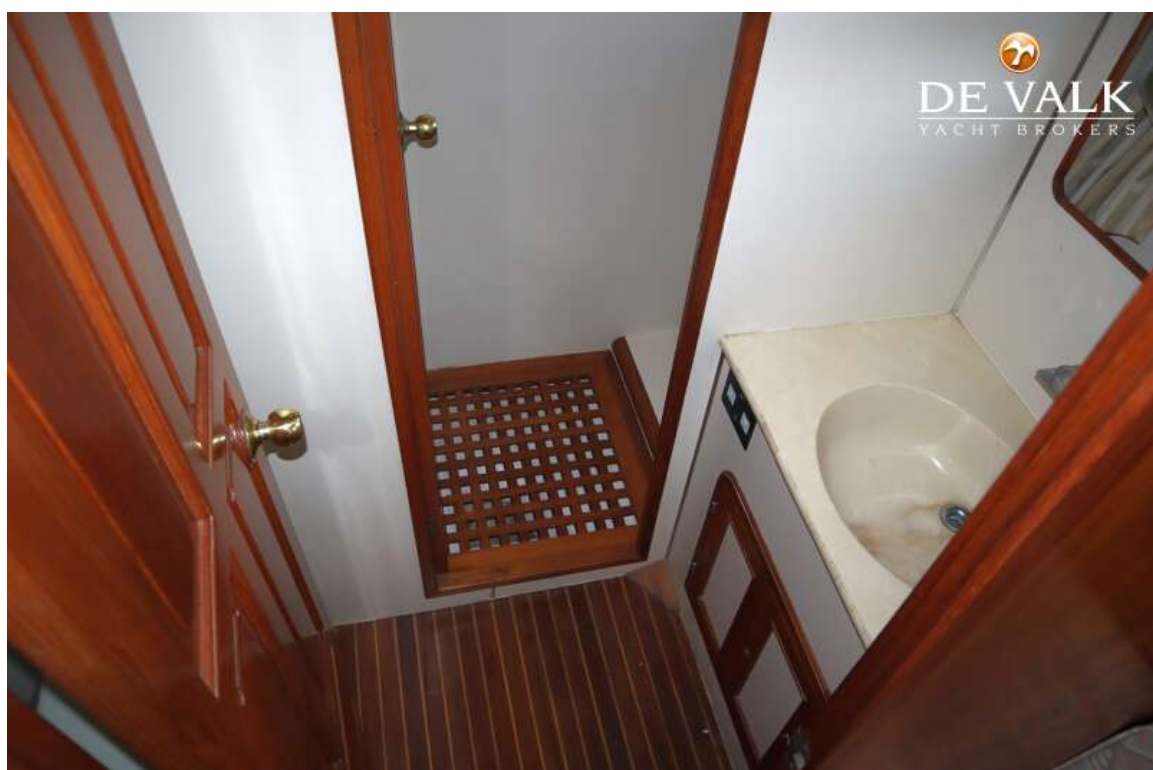
TRADER 72



TRADER 72

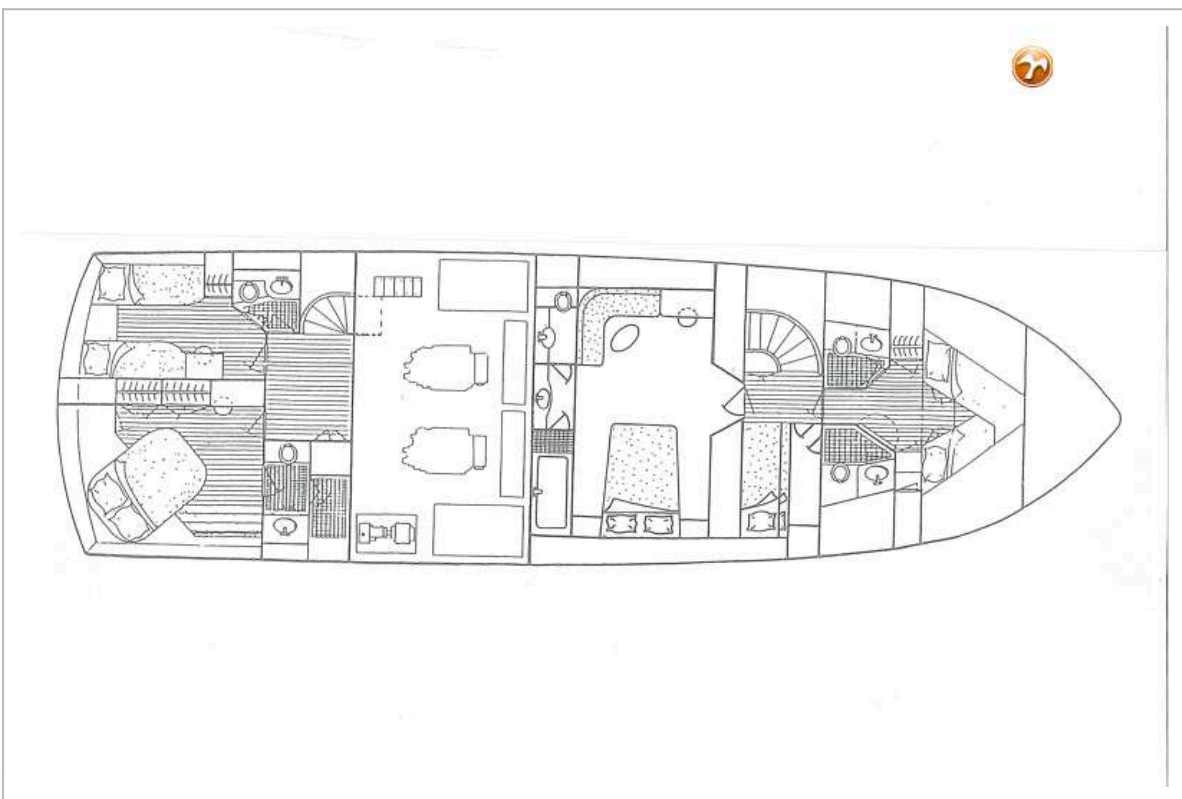


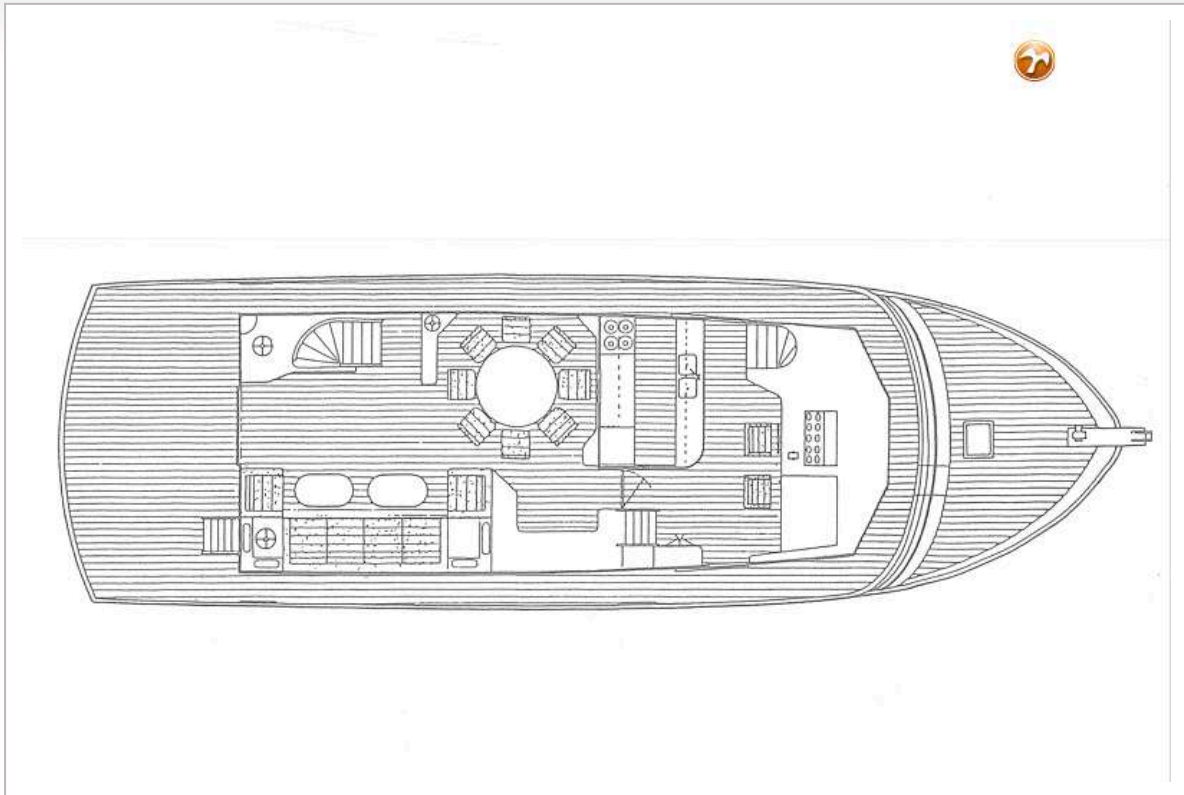


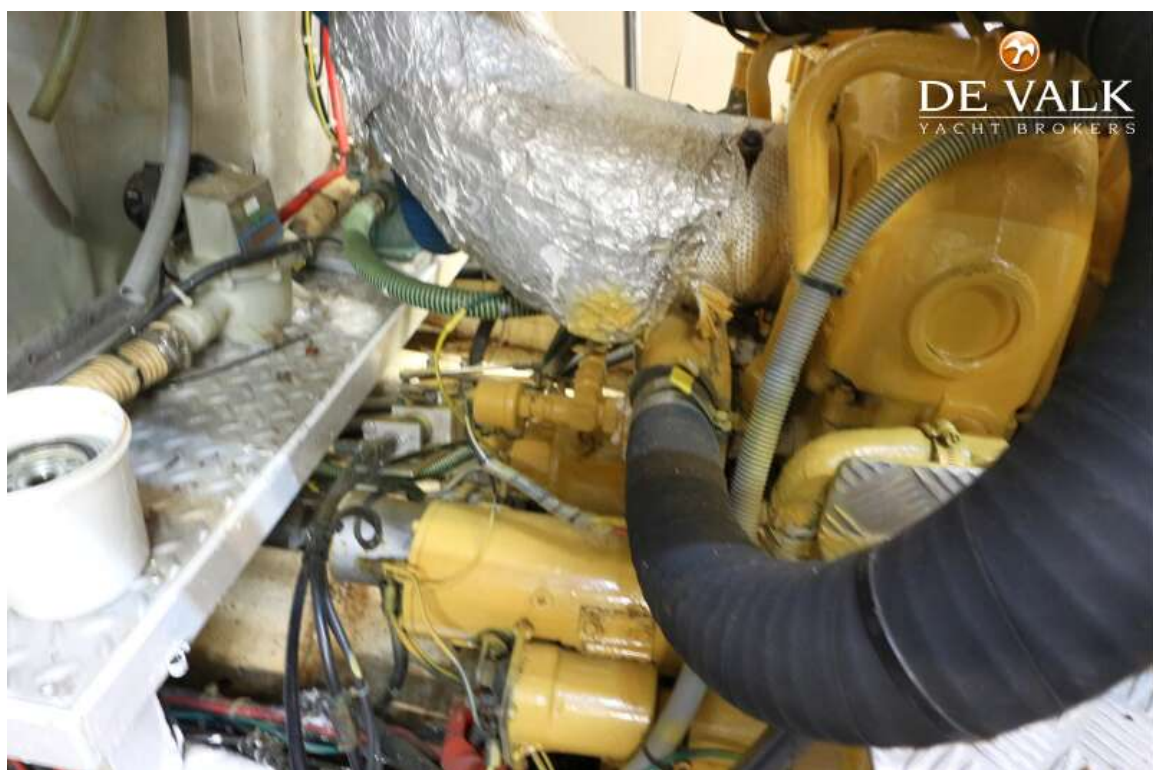
















BROKERAGE | CHARTER | BERTHS | FINANCE | INSURANCE | YACHT MANAGEMENT

DE VALK
YACHT BROKERS




**This yacht will be auctioned,
for further details please visit www.devalk.nl**

**Dit schip zal worden geveild,
voor meer informatie gaat u naar www.devalk.nl**

**Dieses Schiff wird versteigert,
für weitere informationen besuchen Sie www.devalk.nl**

WWW.DEVALK.NL


DE VALK
YACHT BROKERS

