



## GRANDEZZA 28 OC



## BROKER'S COMMENTS

The Grandezza 28 OC is the perfect choice when you value an uncomplicated lifestyle at sea. On board you will find a spacious and elegant cockpit with an open layout for socializing. An inviting and comfortable cabin is tailored for overnight stays. As well as an extra cabin for guests or kids.

*Per Engdahl*

## SPECIFICATIONS

|                     |                                   |                |                          |
|---------------------|-----------------------------------|----------------|--------------------------|
| <b>Dimensions</b>   | 8.80 x 2.85 x 0.00 (m)            | <b>Builder</b> | Finnmaster Boats OY      |
| <b>Built</b>        | 2018                              | <b>Cabins</b>  | 2                        |
| <b>Material</b>     | GRP                               | <b>Berths</b>  | 6                        |
| <b>Engine(s)</b>    | 1 x Volvo Penta D4-260 A-F diesel | <b>Hp/Kw</b>   | 300.00 (hp), 220.80 (kw) |
| <b>Asking price</b> | € 175.000 (VAT Paid)              | <b>Lying</b>   | contact sales office     |

## CONTACT

|                     |                        |                  |                  |
|---------------------|------------------------|------------------|------------------|
| <b>Sales office</b> | De Valk Sweden         | <b>Telephone</b> | +46 72 358 50 74 |
| <b>Address</b>      | 385 98 Bergkvara<br>SE | <b>E-mail</b>    | sweden@devalk.nl |

## DISCLAIMER

These particulars are given in good faith as supplied but cannot be guaranteed.



## GENERAL

|                         |                     |
|-------------------------|---------------------|
| Model                   | GRANDEZZA 28 OC     |
| Type                    | motor yacht         |
| LOA (m)                 | 8,80                |
| Beam (m)                | 2,85                |
| Year built              | 2018                |
| Builder                 | Finnmaster Boats OY |
| Country                 | Finland             |
| Displacement (t)        | 3,1                 |
| Hull material           | GRP                 |
| Hull colour             | White               |
| Antifouling (year)      | Every year          |
| Fuel tank (litre)       | 265                 |
| Freshwater tank (litre) | 80                  |
| Wheel steering          | yes                 |
| Inside helm position    | yes                 |

## ACCOMMODATION

|                       |                 |
|-----------------------|-----------------|
| Cabins                | 2               |
| Berths                | 6               |
| Open cockpit          | yes             |
| Heating               | Diesel          |
| Galley                | yes             |
| Fridge                | Main and extra. |
| Hot water system      | yes             |
| Water pressure system | yes             |
| Toilet                | yes             |
| Shower                | yes             |

## MACHINERY



|                     |             |
|---------------------|-------------|
| No of engines       | 1           |
| Make                | Volvo Penta |
| Type                | D4-260 A-F  |
| HP                  | 300         |
| kW                  | 220.80      |
| Fuel                | diesel      |
| Maximum speed (kn)  | 39          |
| Engine hours        | 100         |
| Bowthruster         | yes         |
| Sternthruster       | yes         |
| Start battery       | yes         |
| Service battery     | yes         |
| Bowthruster battery | yes         |
| Battery monitor     | yes         |
| Battery charger     | yes         |
| Solar panel         | yes         |
| Shorepower          | yes         |
| Trimtabs            | yes         |

## NAVIGATION

|                   |                  |
|-------------------|------------------|
| Depth sounder/log | yes              |
| Plotter/GPS       | Raymarine 9" GPS |
| Navigation lights | yes              |
| Searchlight       | yes              |

## EQUIPMENT

|                  |     |
|------------------|-----|
| Cockpit table    | yes |
| Bathing platform | yes |
| Boarding ladder  | yes |
| Deck shower      | yes |
| Anchor           | yes |



|                   |                     |
|-------------------|---------------------|
| Windlass aft      | yes                 |
| Fenders           | yes                 |
| Mooring lines     | yes                 |
| Fire extinguisher | yes                 |
| Extra info        | Fusion sound system |





# GRANDEZZA 28 OC



## GRANDEZZA 28 OC



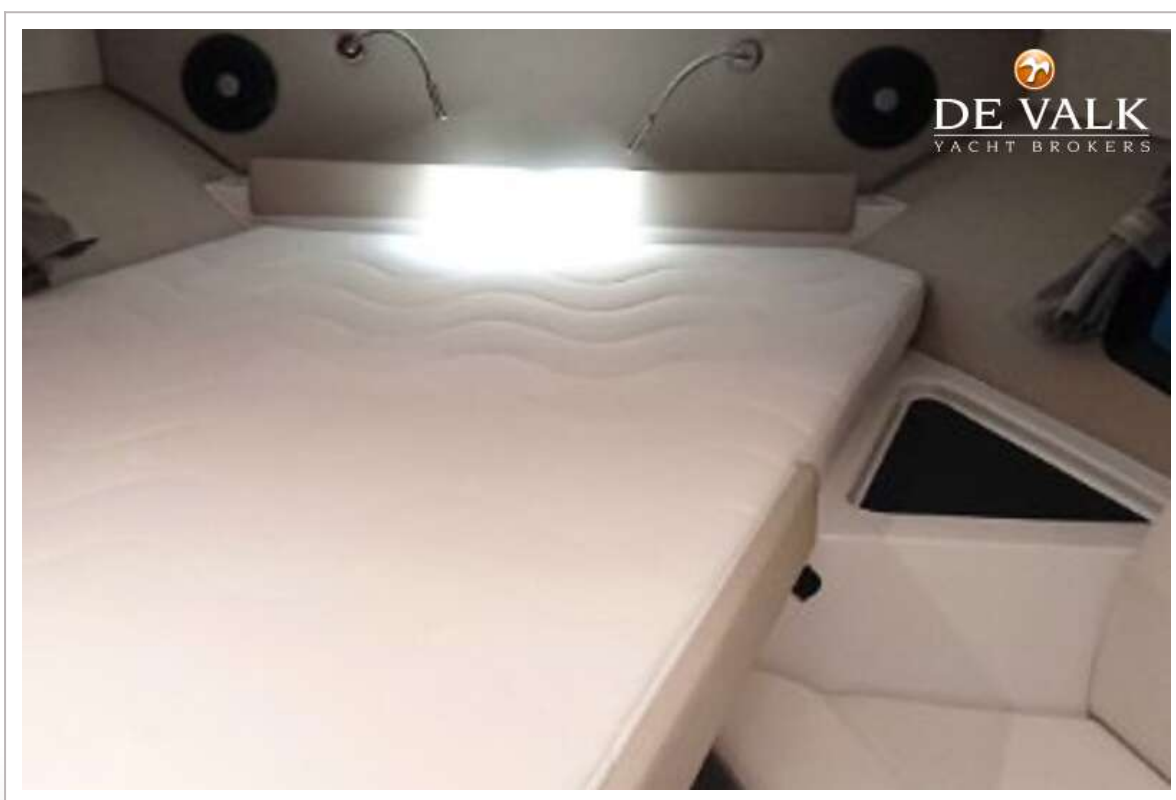


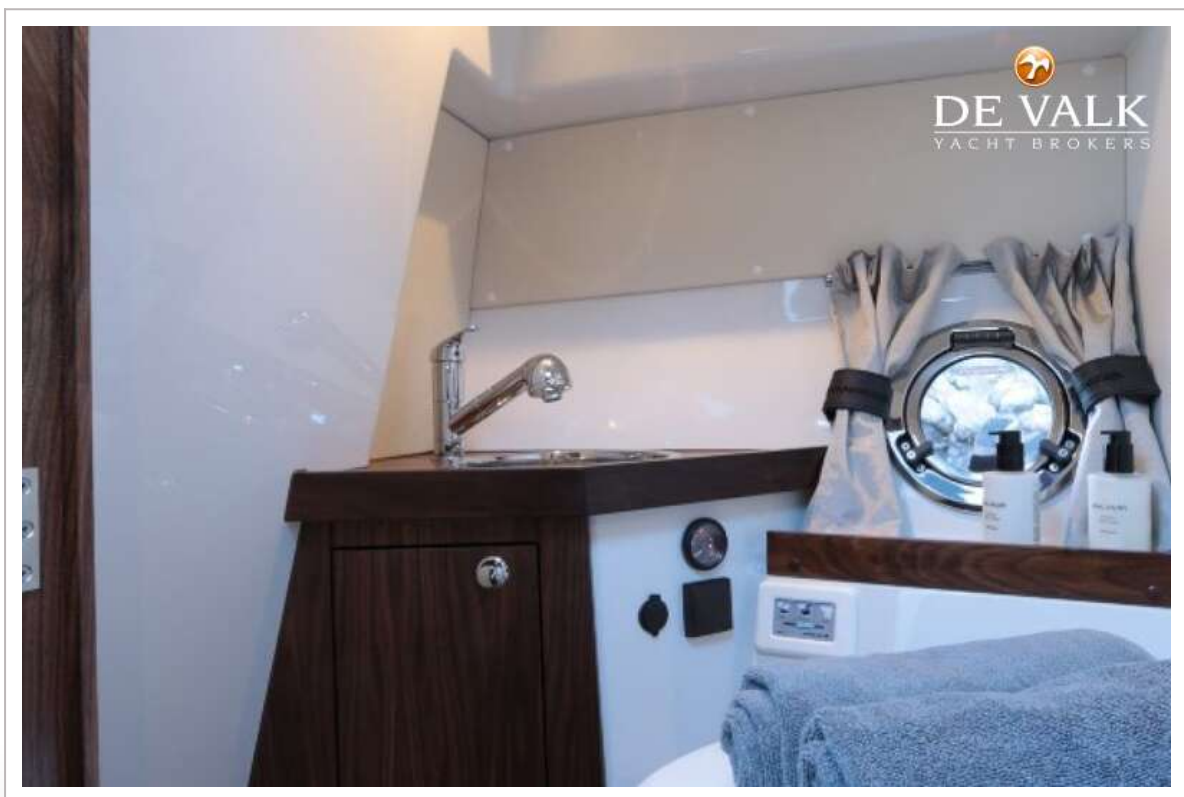
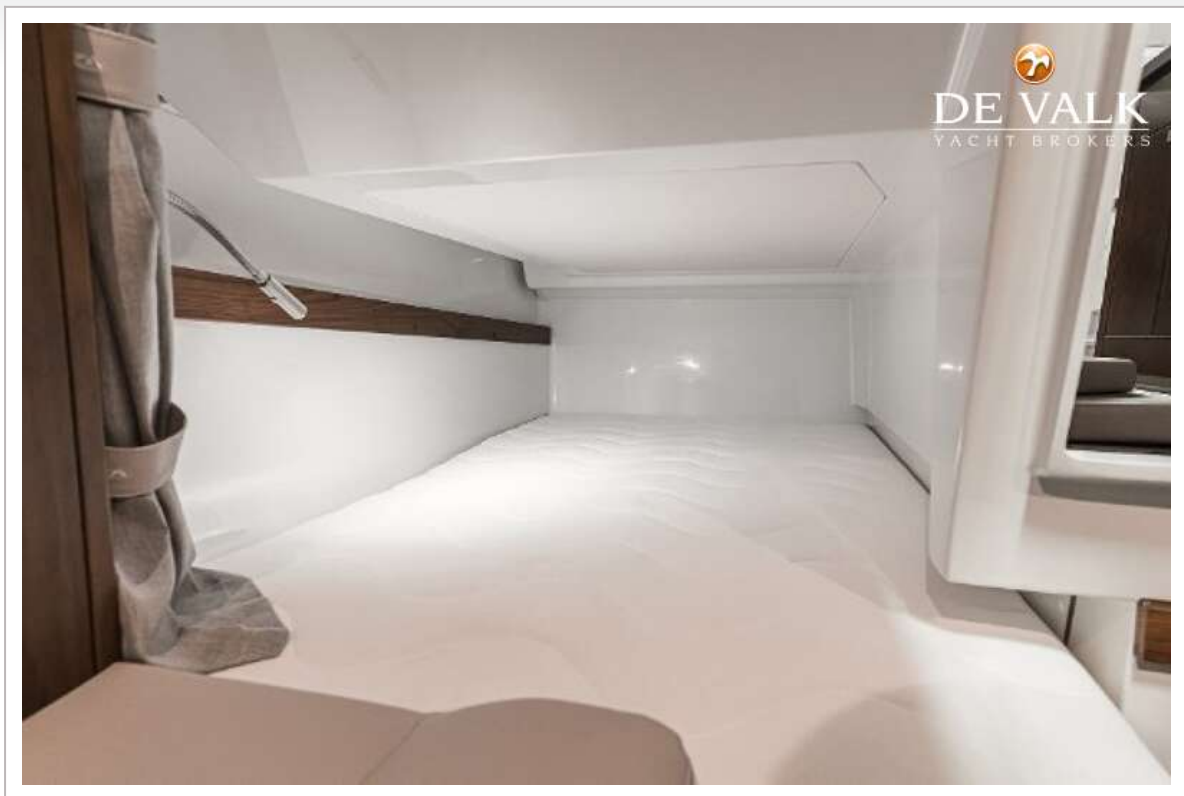
# GRANDEZZA 28 OC





# GRANDEZZA 28 OC





# GRANDEZZA 28 OC









