



BOARNCRUISER 38 CLASSIC LINE



BOARNCRUISER 38 CLASSIC LINE

BROKER'S COMMENTS

This beautiful Boarncruiser 38 Classic Line Aft Cabin was built in 2017 by her first and only owner for comfort and style. This is reflected in the appearance by all teak wood accents, but also in special layout of this Boarncruiser 38 Classic line. The boat has a spacious owner's cabin and a special cabin in the front where emergency guests can sleep. This front cabin can be adapted to a fixed bed in the front. We are happy to discuss the possibilities with you. The ship is equipped with comfortable options and is also equipped with a convertible tent over the entire aft deck.

Sjoerd Paddenburg

SPECIFICATIONS

Dimensions	11.40 x 4.05 x 1.10 (m)	Builder	Jachtwerf De Boarnstream
Built	2017	Cabins	1
Material	Steel	Berths	5
Engine(s)	1 x Vetus Deutz DETA4E422A diesel	Hp/Kw	140.00 (hp), 103.04 (kw)
Asking price	sold (VAT)	Lying	at sales office

CONTACT

Sales office	De Valk Loosdrecht B.V.	Telephone	+31 (0)35 582 90 30
Address	't Breukeleveense Meentje 6 1231LM Loosdrecht / Wijdmeren NL	E-mail	loosdrecht@devalk.nl

DISCLAIMER

These particulars are given in good faith as supplied but cannot be guaranteed.



BOARNCRUISER 38 CLASSIC LINE

GENERAL

Model	BOARNCRUISER 38 CLASSIC LINE
Type	motor yacht
LOA (m)	11,40
Beam (m)	4,05
Draft (m)	1,10
Air draft min (m)	2,70
Year built	2017
Builder	Jachtwerf De Boarnstream
Country	The Netherlands
Designer	Werner Jachtdesign
CE norm	B
Hull material	steel
Hull colour	blue
Hull thickness (mm)	4
Hull shape	multi hard chine
Keel type	long keel
Superstructure material	steel
Superstructure (mm)	4/5
Deck material	steel
Deck finish	teak
Superstructure deck finish	teak
Cockpit deck finish	teak
Window frame	aluminium
Window material	tempered glass Tinted
Fuel tank (litre)	steel 300
Fuel tank 2 (litre)	steel 300
Level indicator (fuel tank)	yes
Freshwater tank (litre)	polyethylene 2x 250L
Blackwater tank (litre)	polyethylene 1x 250L
Wheel steering	yes



1

5

teak

2x fixed berth in aft cabin, possibility for extra berth front

teak and holly

yes

diesel ducted hot air 5,5 kW

yes

yes

yes

yes

calor gas 3 burners

yes

210L electric

In fridge

220V + engine 40L Boiler

electrical

double bed

separate

separate

electric

at the toilet

separate

1

Vetus Deutz

DETA4E422A



BOARNCRUISER 38 CLASSIC LINE

HP	140
kW	103.04
Fuel	diesel
Maximum speed (kn)	8
Cruising speed (kn)	6
Consumption (l/hr)	6
Engine hours	1000
Engine cooling system	freshwater heat exchanger
Drive	shaft
Engine controls	yes
Bowthruster	electric 75kgf
Sternthruster	electric 75kgf
Propeller type	yes
Propeller blades	4
Start battery	12v/220v 140 Amp
Service battery	420 Amp
Bowthruster battery	yes
Sternthruster battery	yes
Battery charger	100A
Inverter	3000W
Shorepower	with cable

NAVIGATION

Depth sounder	Raymarine i70
Log	Raymarine i70
Rudder angle indicator	Raymarine i70
Plotter/GPS	Raymarine Axiom
Navigation lights	yes

EQUIPMENT

Cockpit cover	yes
---------------	-----



BOARNCRUISER 38 CLASSIC LINE

Cockpit table	yes
Boarding ladder	stainless steel
Deck shower	yes
Anchor	1x 20kg - stainless steel
Anchor chain	30m
Windlass	electrical Loffrans
Deck wash	yes
Sea railing	stainless steel
Fenders	yes
Mooring lines	yes
TV	yes



BOARNCRUISER 38 CLASSIC LINE



BOARNCRUISER 38 CLASSIC LINE



BOARNCRUISER 38 CLASSIC LINE



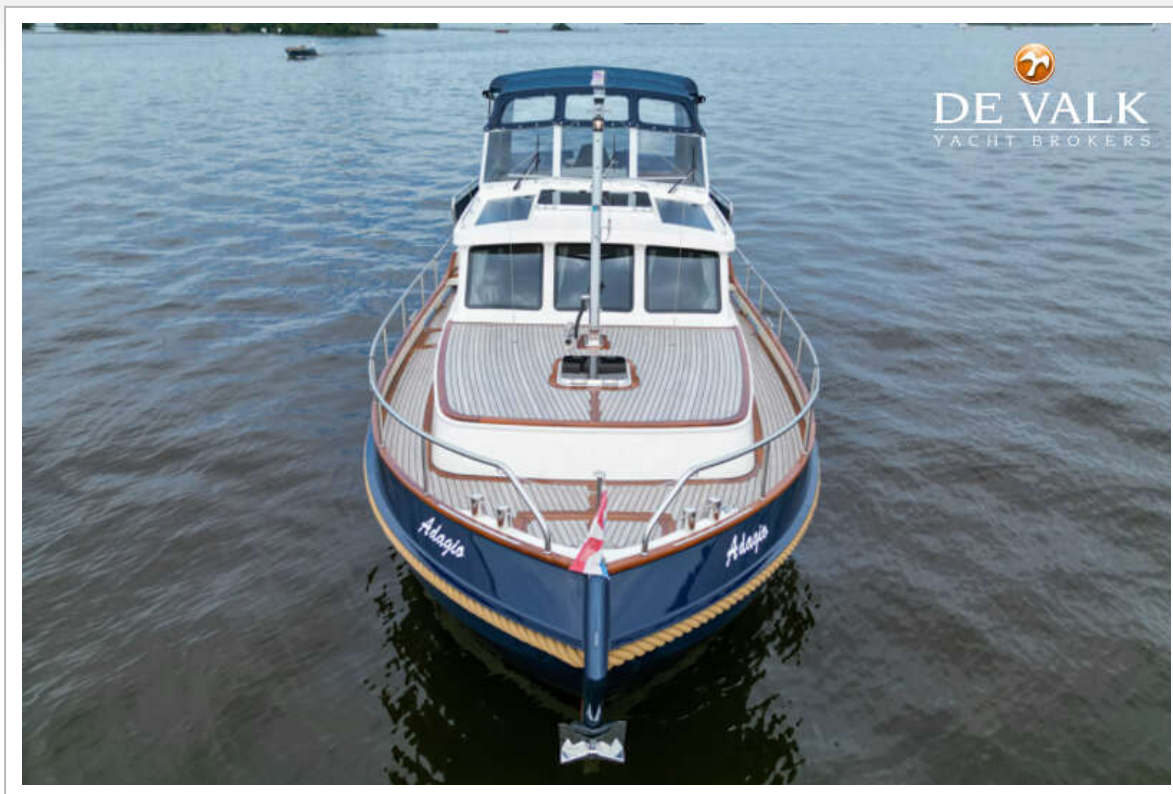
BOARNCRUISER 38 CLASSIC LINE



BOARNCRUISER 38 CLASSIC LINE



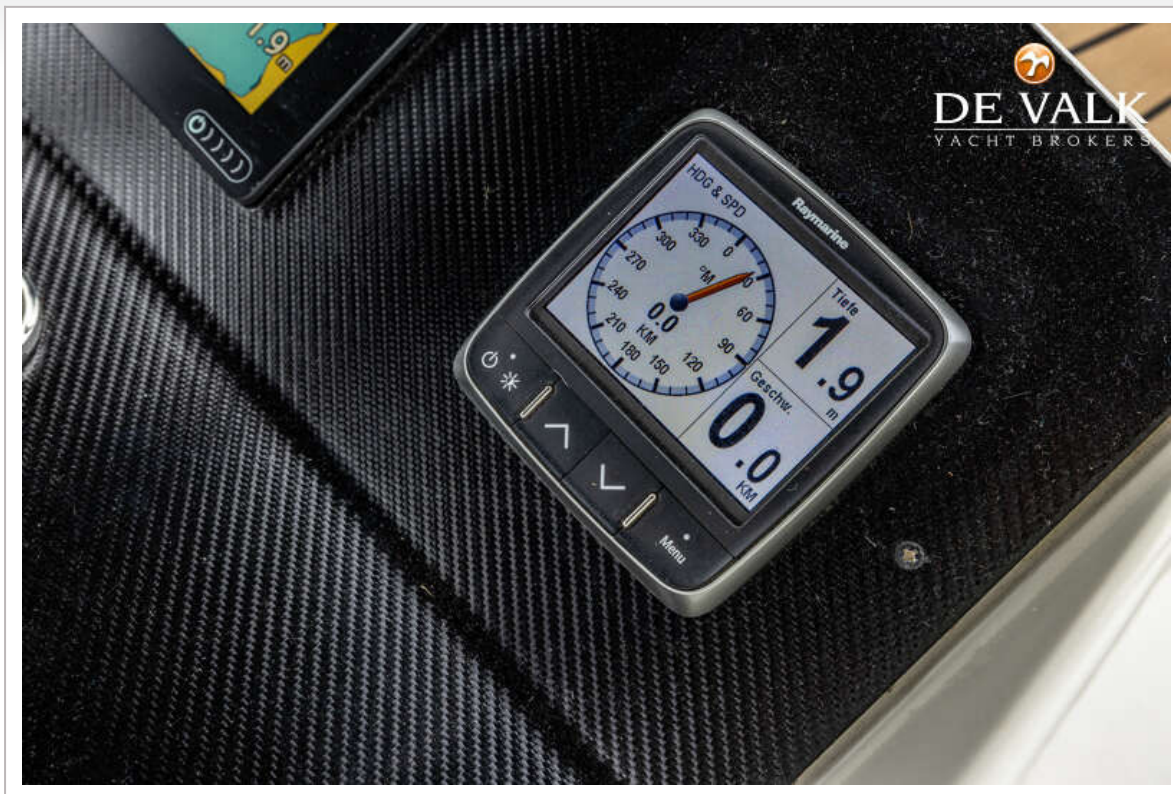
BOARNCRUISER 38 CLASSIC LINE



BOARNCRUISER 38 CLASSIC LINE



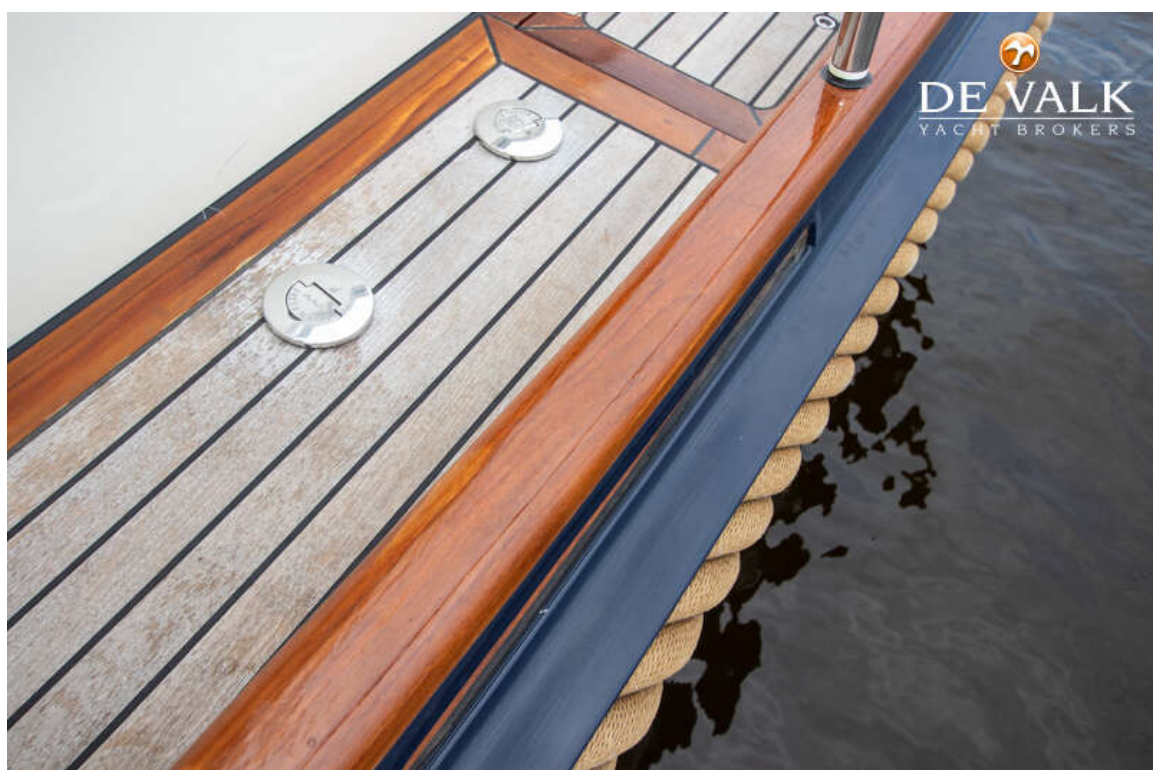
BOARNCRUISER 38 CLASSIC LINE



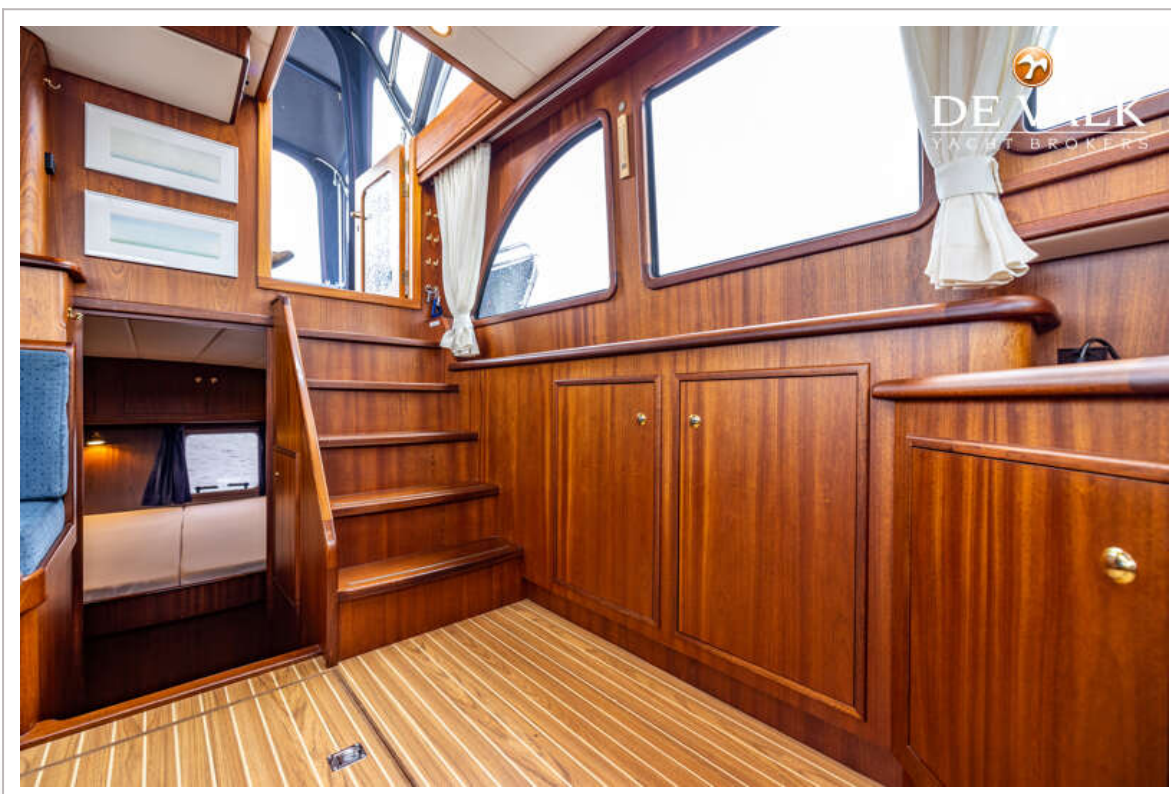
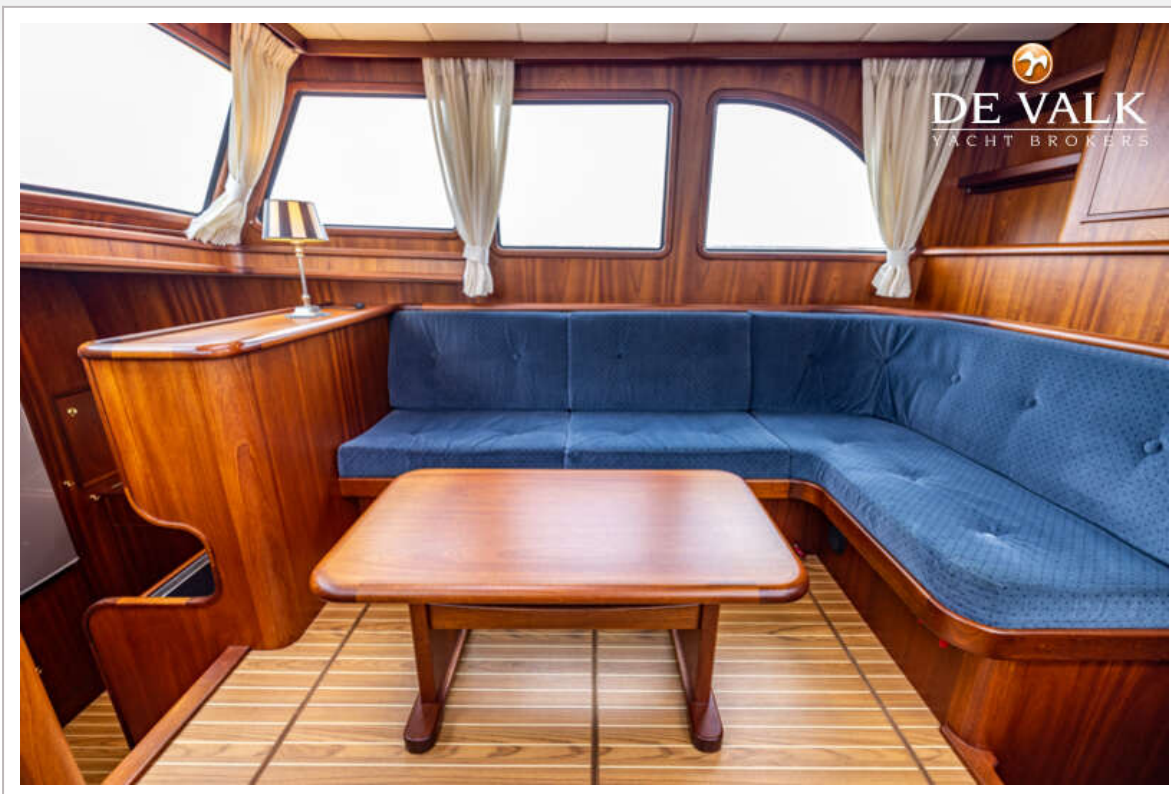
BOARNCRUISER 38 CLASSIC LINE



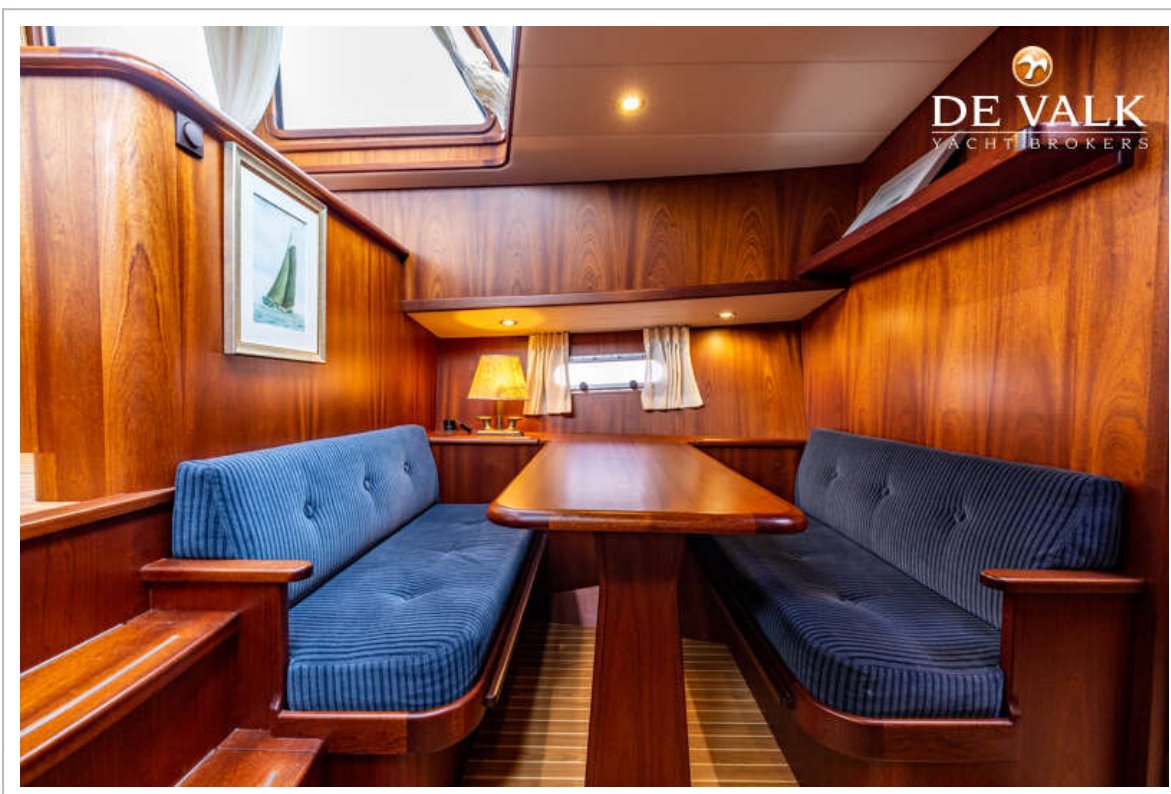
BOARNCRUISER 38 CLASSIC LINE



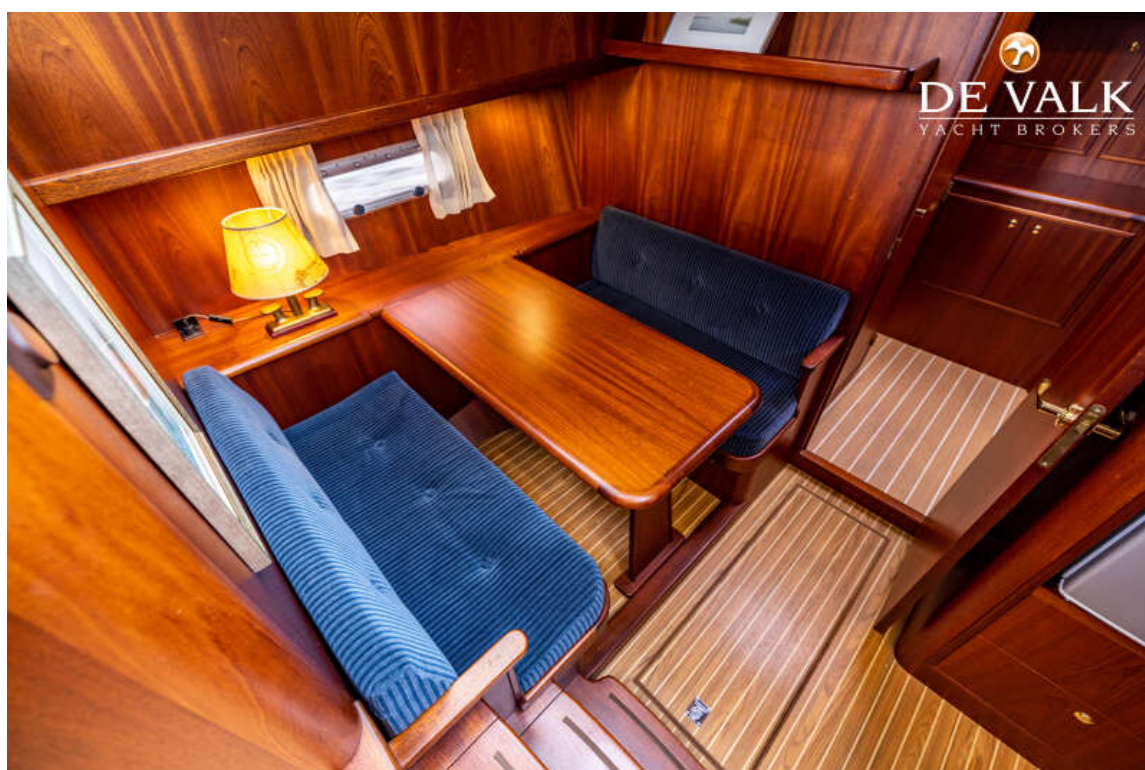
BOARNCRUISER 38 CLASSIC LINE



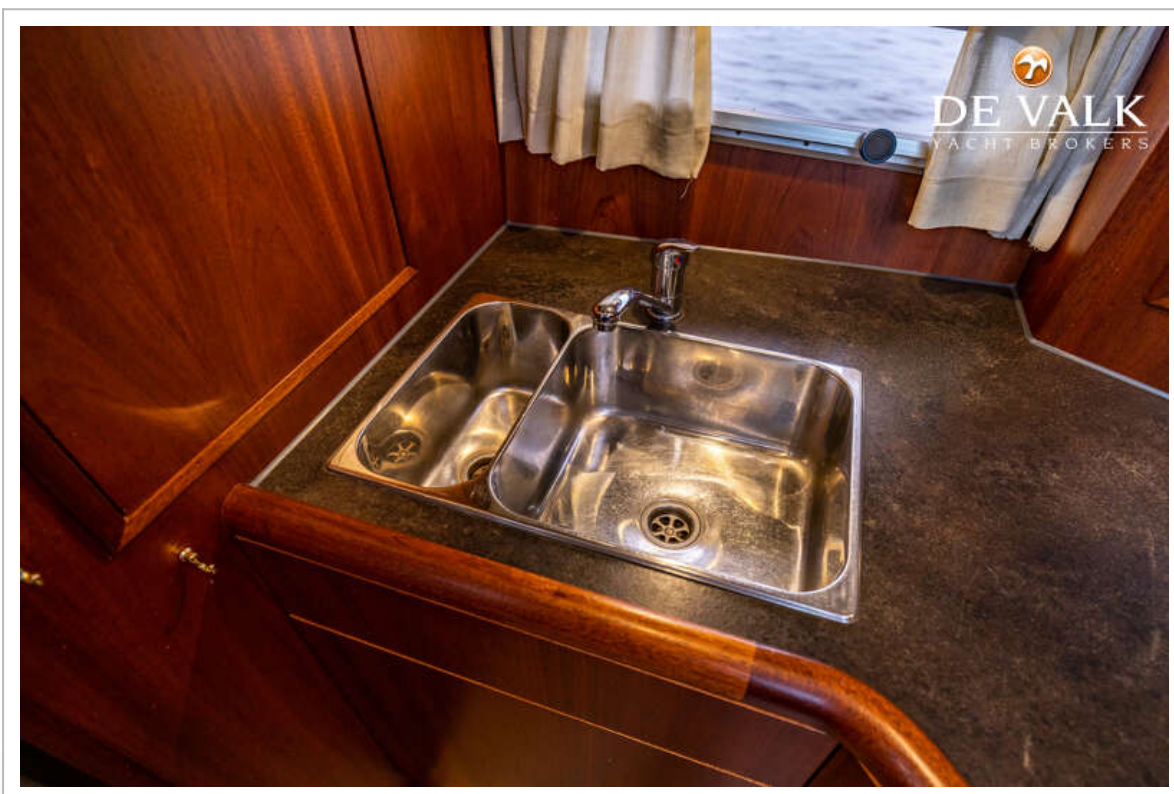
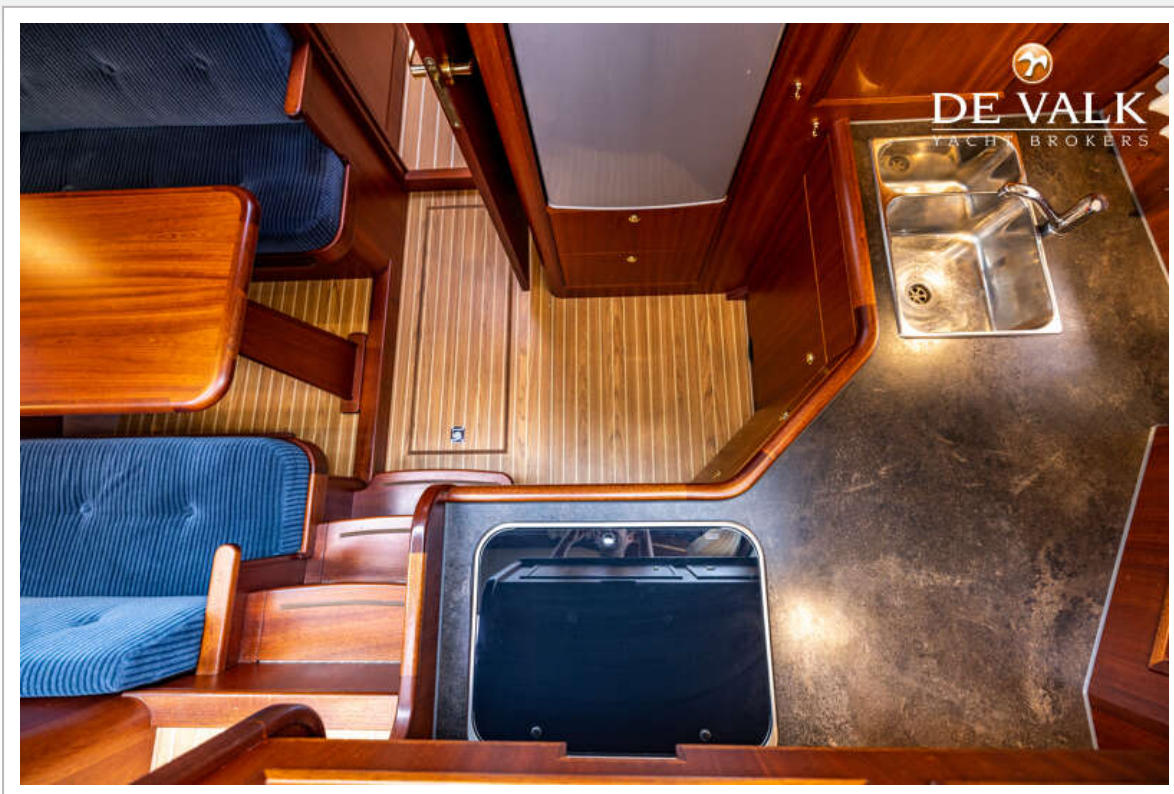
BOARNCRUISER 38 CLASSIC LINE



BOARNCRUISER 38 CLASSIC LINE



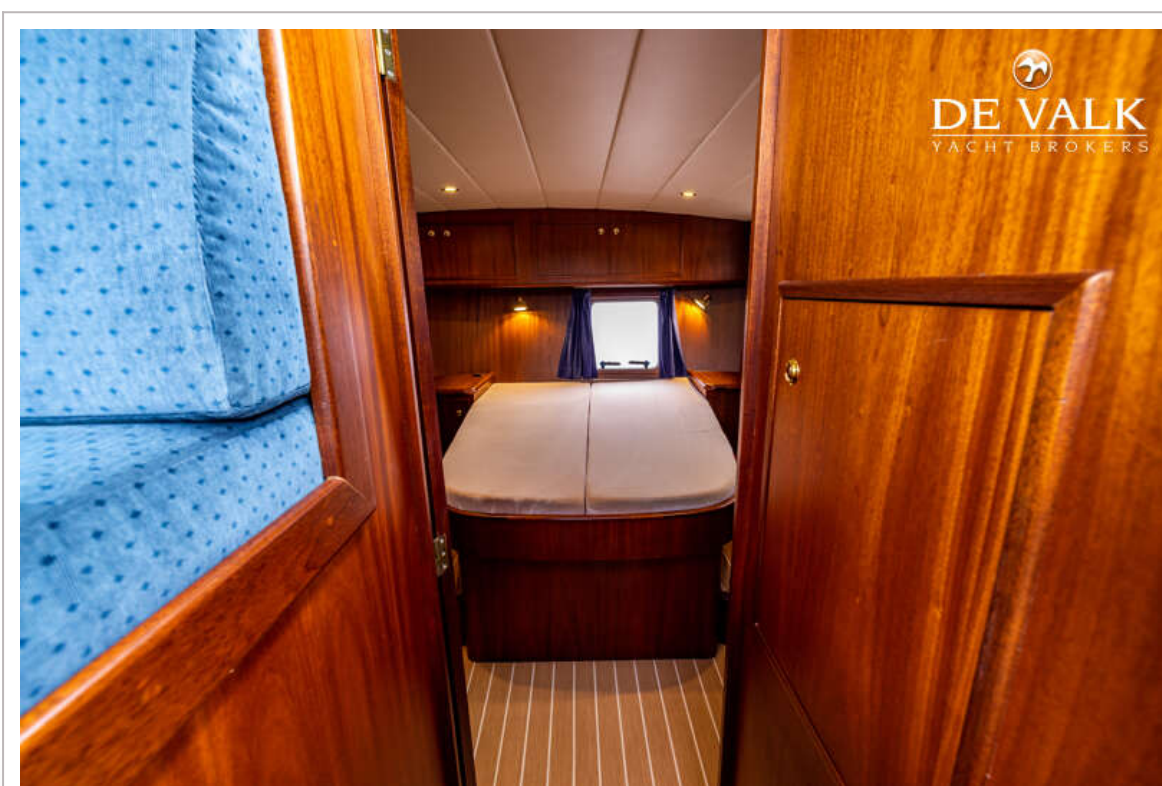
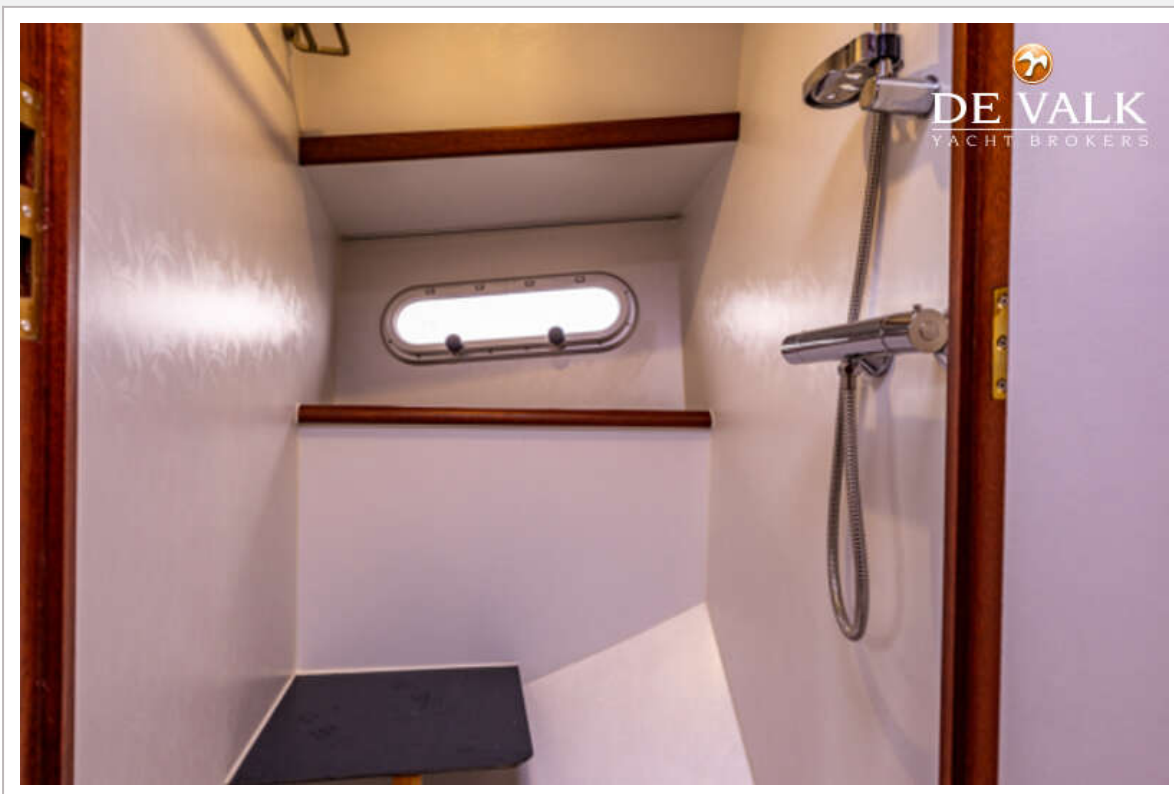
BOARNCRUISER 38 CLASSIC LINE



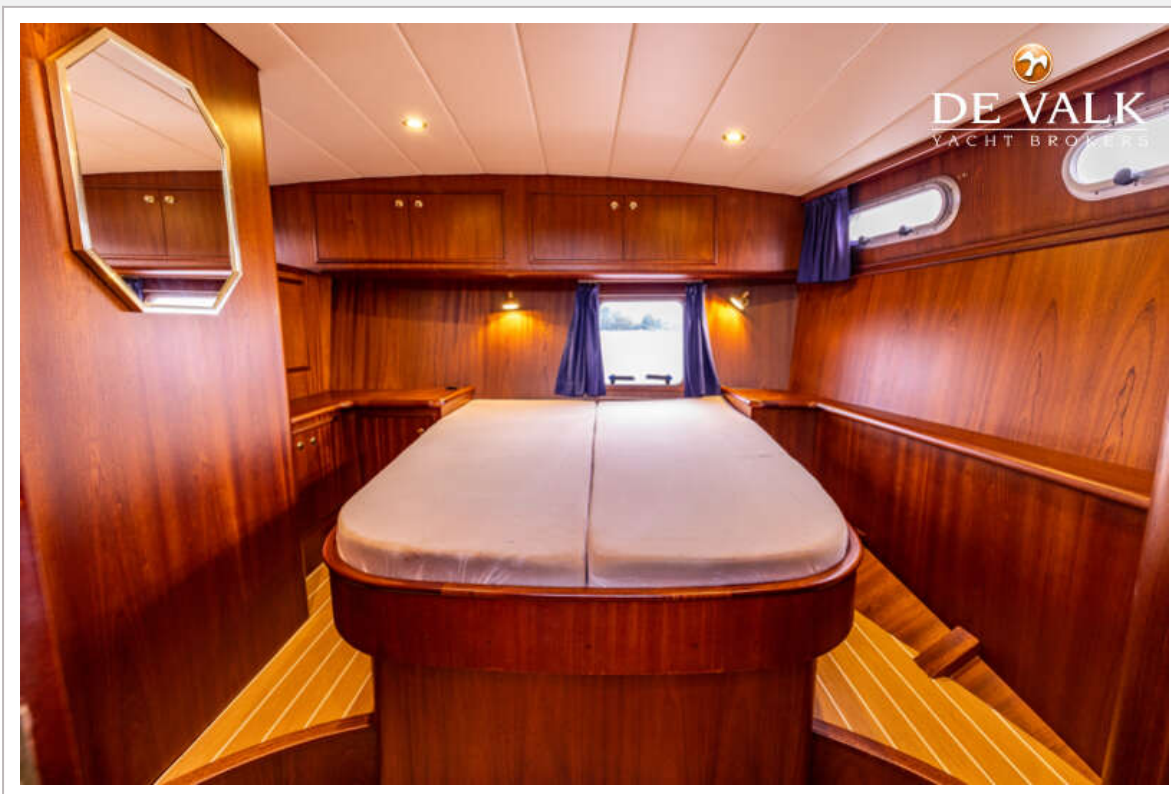
BOARNCRUISER 38 CLASSIC LINE

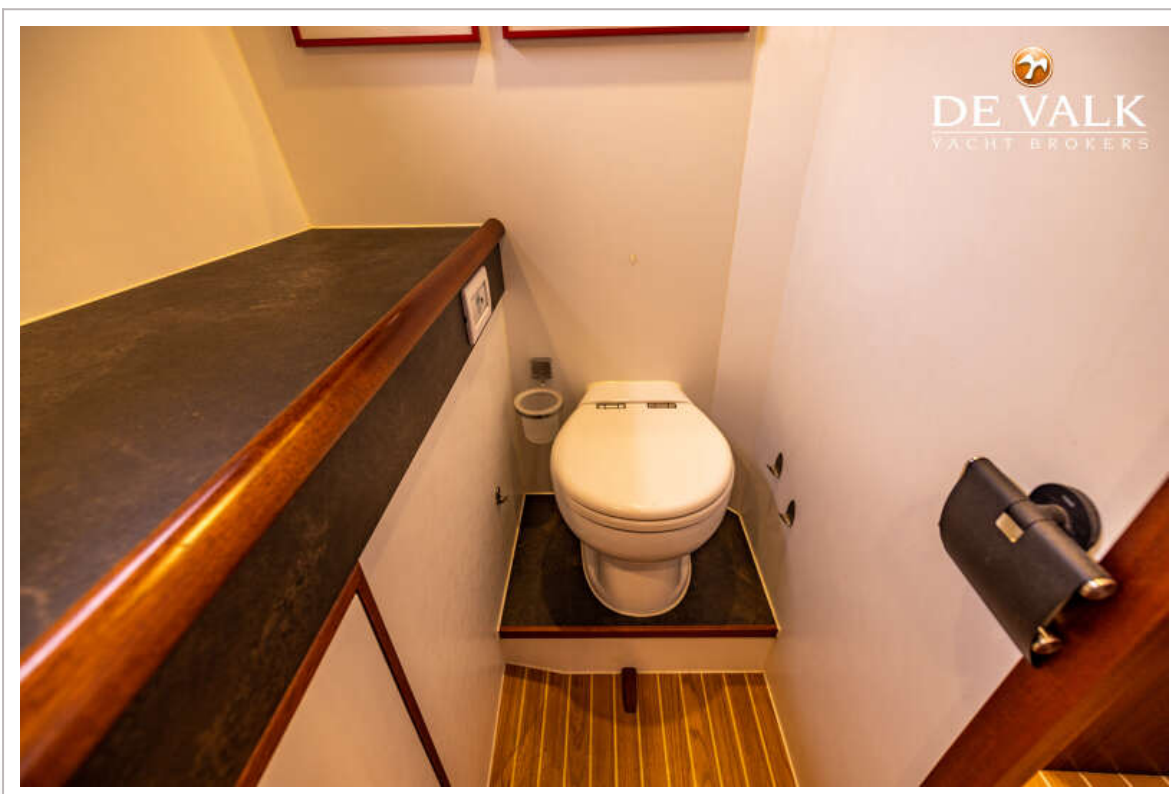


BOARNCRUISER 38 CLASSIC LINE

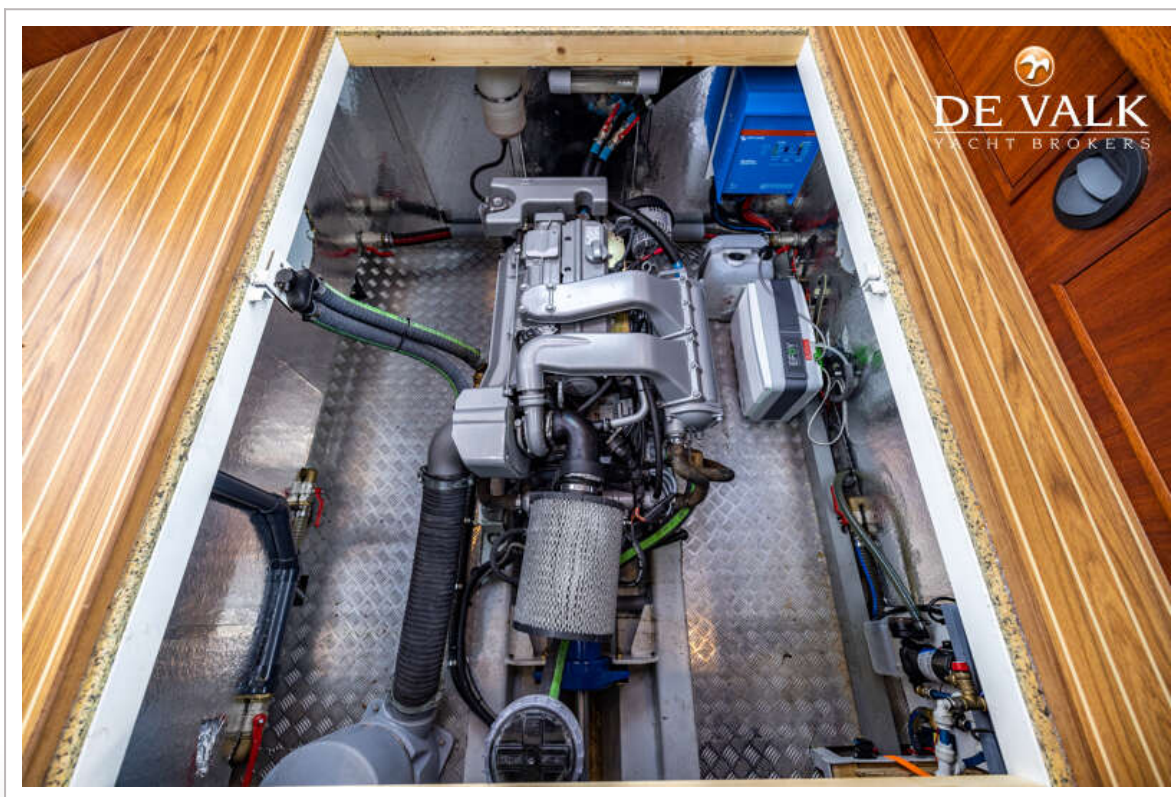
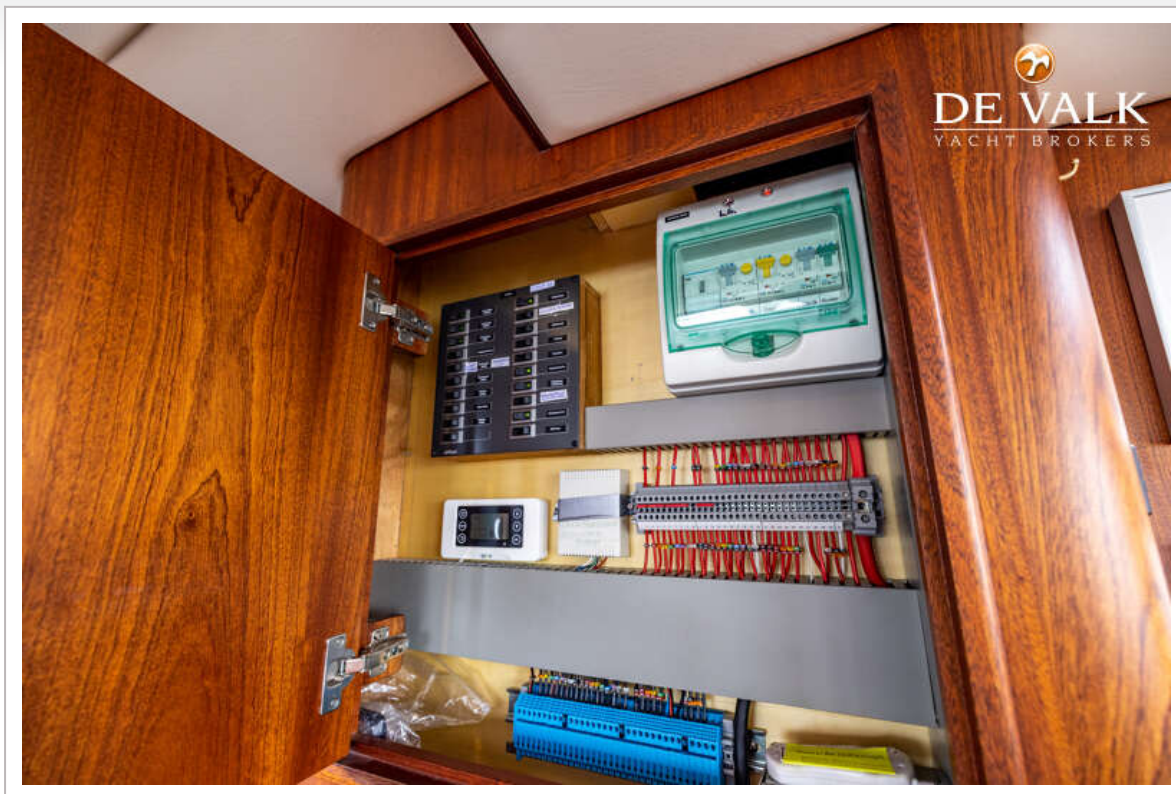


BOARNCRUISER 38 CLASSIC LINE





BOARNCRUISER 38 CLASSIC LINE



BOARNCRUISER 38 CLASSIC LINE

