



DE VALK  
YACHT BROKERS

## EXPLORER MMS 55 TRAWLER



DE VALK  
YACHT BROKERS

# EXPLORER MMS 55 TRAWLER

## BROKER'S COMMENTS

Designed for adventurous owners who want a highly capable vessel that meets their travel expectations in a safe and comfortable environment. Built by an experienced commercial shipyard that builds North Sea fishing vessels and work boats capable of operating in all weather and sea conditions. The Sea Ranger is heavily and professionally constructed with professional systems. The engines are commercially classified in category A up to 5,000 hours per year. This yacht can take you anywhere in complete safety and with her 7mm thick hull. Come and see her at our sales marina

*Bas Lohmann*

## SPECIFICATIONS

<b>Dimensions</b>	18.44 x 5.36 x 1.80 (m)	<b>Builder</b>	MMS Ship Repair & Dry Dock Ltd.
<b>Built</b>	2021	<b>Cabins</b>	3
<b>Material</b>	Steel	<b>Berths</b>	6
<b>Engine(s)</b>	2 x John Deere 4045AFM8 diesel	<b>Hp/Kw</b>	2 x 180.00 (hp), 132.48 (kw)
<b>Asking price</b>	€ 1.450.000 (VAT Not paid)	<b>Lying</b>	at sales office

## CONTACT

<b>Sales office</b>	De Valk Loosdrecht B.V.	<b>Telephone</b>	+31 (0)35 582 90 30
<b>Address</b>	't Breukeleveense Meentje 6 1231LM Loosdrecht / Wijdmeren NL	<b>E-mail</b>	loosdrecht@devalk.nl

## DISCLAIMER

These particulars are given in good faith as supplied but cannot be guaranteed.



# EXPLORER MMS 55 TRAWLER

## GENERAL

Model	EXPLORER MMS 55 TRAWLER
Type	motor yacht
LOA (m)	18,44
Beam (m)	5,36
Draft (m)	1,80
Year built	2021
Launched	2021
Builder	MMS Ship Repair & Dry Dock Ltd.
Country	United Kingdom
Displacement (t)	58
CE norm	A
Hull material	steel
Hull colour	blue
Hull thickness (mm)	7
Hull shape	round-bilged
Keel type	bilge keels
Bilge keels	yes
Superstructure material	aluminium
Rubbing strake	steel
Deck material	steel
Deck finish	non-skid paint
Cockpit deck finish	non-skid paint
Antifouling (year)	2021
Window frame	aluminium
Window material	double glazing Heated
Deckhatch	yes
Portholes	aluminium
Insulation	glasswool
Flybridge	yes
Flybridge suncover	yes



# EXPLORER MMS 55 TRAWLER

Fuel tank (litre)	steel 2500
Fuel tank 2 (litre)	steel 2500
Level indicator (fuel tank)	yes
Freshwater tank (litre)	polyethylene 600
Level indicator (freshwater)	yes
Blackwater tank (litre)	polyethylene 300
Level indicator (blackwater)	yes
Blackwater tank extraction	deck extraction + pump
Greywater tank (litre)	1000
Wheel steering	powersteer
Inside helm position	Joystick
Flybridge helm position	powersteer Joystick

## ACCOMMODATION

Cabins	3
Berths	6
Interior	teak
Floor	woodprint
Pilot house/deck saloon	yes
Heating	electric 220V
Air-conditioning	reverse cycle airco Fischer Panda
Chart table	yes
Opening door to cockpit	yes
Galley	Stainless Steel
Countertop	stainless steel
Sink	stainless steel
Cooker	induction
Microwave/oven combi	Panasonic
Fridge	Kenwood
Hot water system	220V + engine Tempest 200L
Water pressure system	electrical



# EXPLORER MMS 55 TRAWLER

Owners cabin	French bed
Wardrobe	hanging/drawers/shelves
Bathroom	en suite
Toilet	en suite
Toilet system	electric
Wash basin	in the bathroom
Shower	en suite
Guest cabin 1	bunk bed
Wardrobe	hanging/drawers/shelves
Bathroom	shared
Toilet	shared
Toilet system	electric
Wash basin	in the bathroom
Shower	shared
Guest cabin 2	bunk bed
Wardrobe	hanging/drawers/shelves
Washing machine/dryer combi	Zanussi Lindo1000

## MACHINERY

No of engines	2
Make	John Deere
Type	4045AFM8
HP	180
kW	132.48
Fuel	diesel
Year installed	2021
Maximum speed (kn)	11,5
Cruising speed (kn)	7,5
Range (nm)	1500
Engine hours	434
Engine cooling system	closed keelcooling Kort



# EXPLORER MMS 55 TRAWLER

Drive	shaft
Shaft seal	yes
Engine controls	electrical Micro commader
Gearbox	hydraulic 2x ZF2208
Bowthruster	hydraulic Sleipner Side Power SE 120 4V
Sternthruster	hydraulic Sleipner Side Power SE 120 4V
Exhaust	dry
Propeller type	fixed Kort
Propeller shaft material	stainless steel Kort
Manual bilge pump	yes
Electric bilge pump	yes
Bilge alarm	yes
Electrical installation	24 + 240 V
Generator	Fisher Panda 1500 10.8KW
Running hours generator	438
Generator 2	Fisher Panda 1500 10.8KW
Running hours generator 2	221
Batteries	yes
Start battery	4x Mastervolt AGM 130Ah
Service battery	yes
Generator battery	2x Mastervolt AGM 90Ah
Bowthruster battery	2x Mastervolt AGM 120Ah
Battery monitor	Mastervolt touchscreen
Battery charger	1x Mastervolt 24-100 1x Mastervolt 24-30 1x Mastervolt 12-25
Battery charger/inverter	1x Mastervolt Pro 24/3500-100
Shorepower	with cable Portside + Starboard
Insulation transformer	Mastervolt GI 7.0
Watermaker	Parker Safari Versatile series 450 / 70L/h
Stabilizers	fin Sleipner Side Power

## NAVIGATION



# EXPLORER MMS 55 TRAWLER

Compass	Cassens&Plath
Multi control display	yes
Depth sounder	Raymarine 70S
Log	Raymarine i70S
Windset	Raymarine i70S
VHF	Sailor 6222 VHF radio DSC class AV
Autopilot	Raymarine P70S
Rudder angle indicator	2x
Radar	Raymarine Magnum Radar
Radar/GPS/plotter	4x Raymarine Axiom Multi touch
Weather receiver	Airmar
Navtex	Furuno NX-7000A/B
AIS transceiver	Raymarine AIS4000
Camera	4x
Navigation lights	yes
Searchlight	yes
Loudhailer	Verona LH5000

## EQUIPMENT

Sun awning	Flybridge
Bathing platform	yes
Boarding ladder	yes
Transom door	yes
Anchor	yes
Anchor chain	yes
Windlass	electrical Maxwell 3500
Deck wash	yes
Dinghy	Zodiac Cadet 350
Outboard	Honda BF15 - 10 hours
Deck crane	Steelhead marine ES1000
Sea railing	stainless steel



# EXPLORER MMS 55 TRAWLER

Grab rail (superstructure)	stainless steel
Railing side opening gates	yes
Life raft	container Ocean Safety 8 person
Wiper	yes
Window heating	yes
Horn	yes
Fenders	yes
Mooring lines	yes
Spare parts	yes
TV	yes
TV receiver	yes
Radio	Fushion
Speakers in salon	yes
Auto extinguisher system	Statex fire suppression system





# EXPLORER MMS 55 TRAWLER





# EXPLORER MMS 55 TRAWLER





# EXPLORER MMS 55 TRAWLER





# EXPLORER MMS 55 TRAWLER



# EXPLORER MMS 55 TRAWLER





# EXPLORER MMS 55 TRAWLER



# EXPLORER MMS 55 TRAWLER



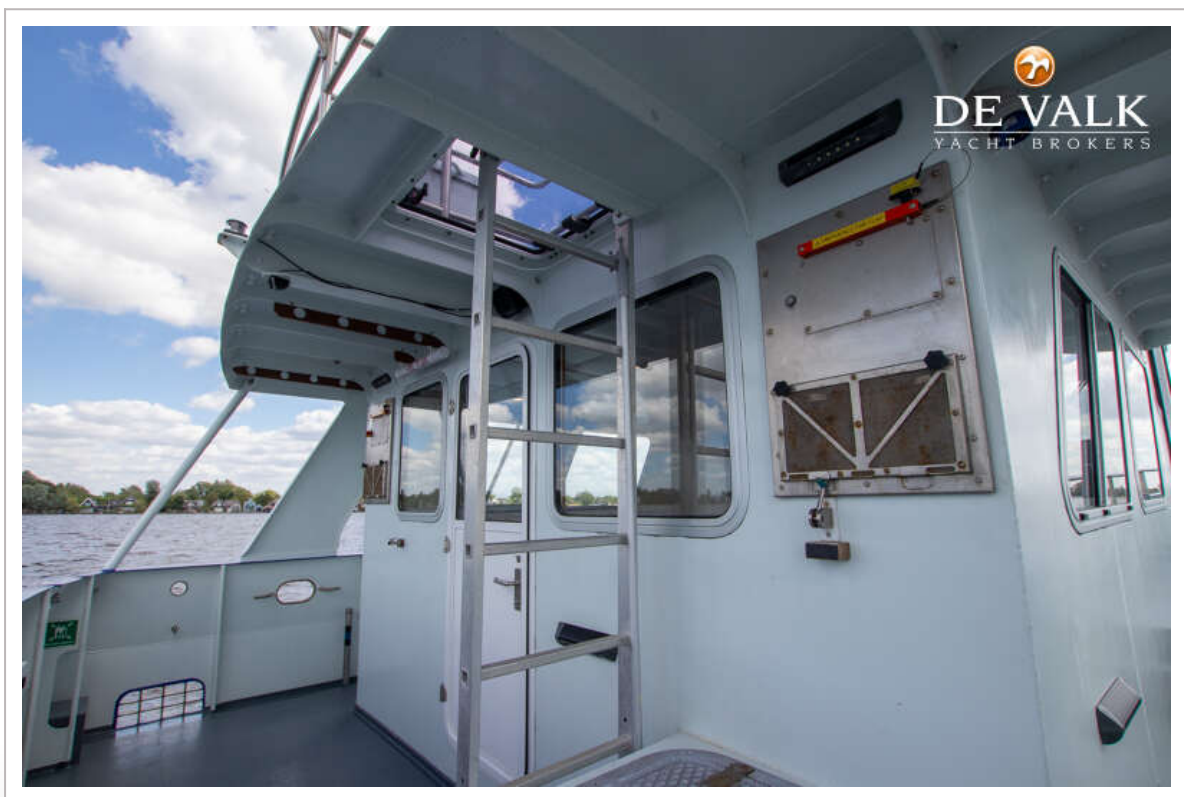


# EXPLORER MMS 55 TRAWLER

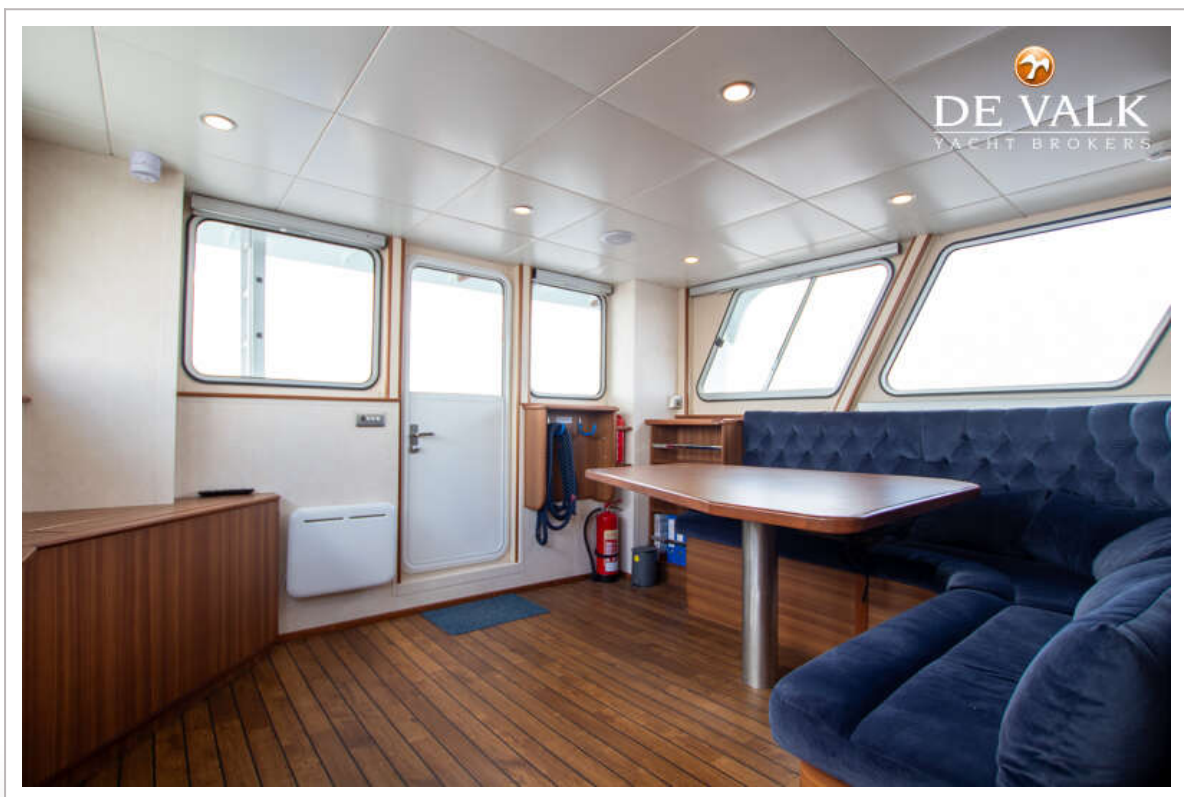




# EXPLORER MMS 55 TRAWLER

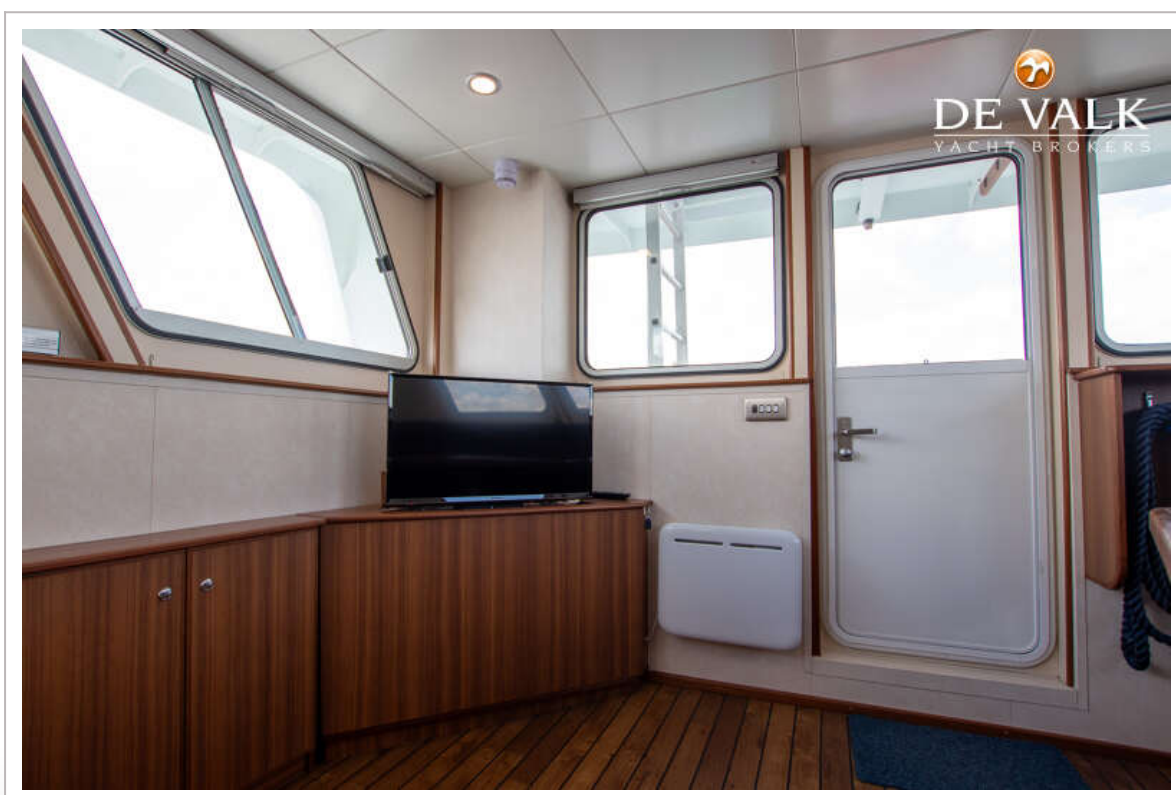
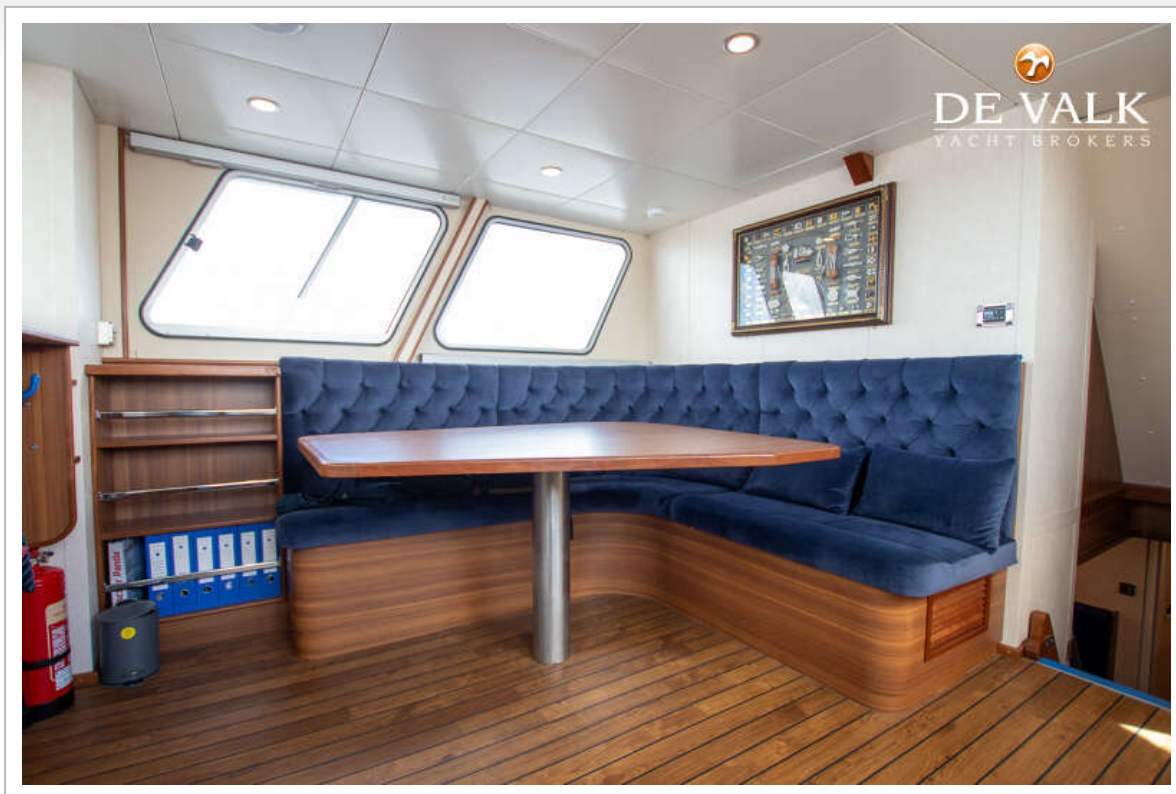


# EXPLORER MMS 55 TRAWLER

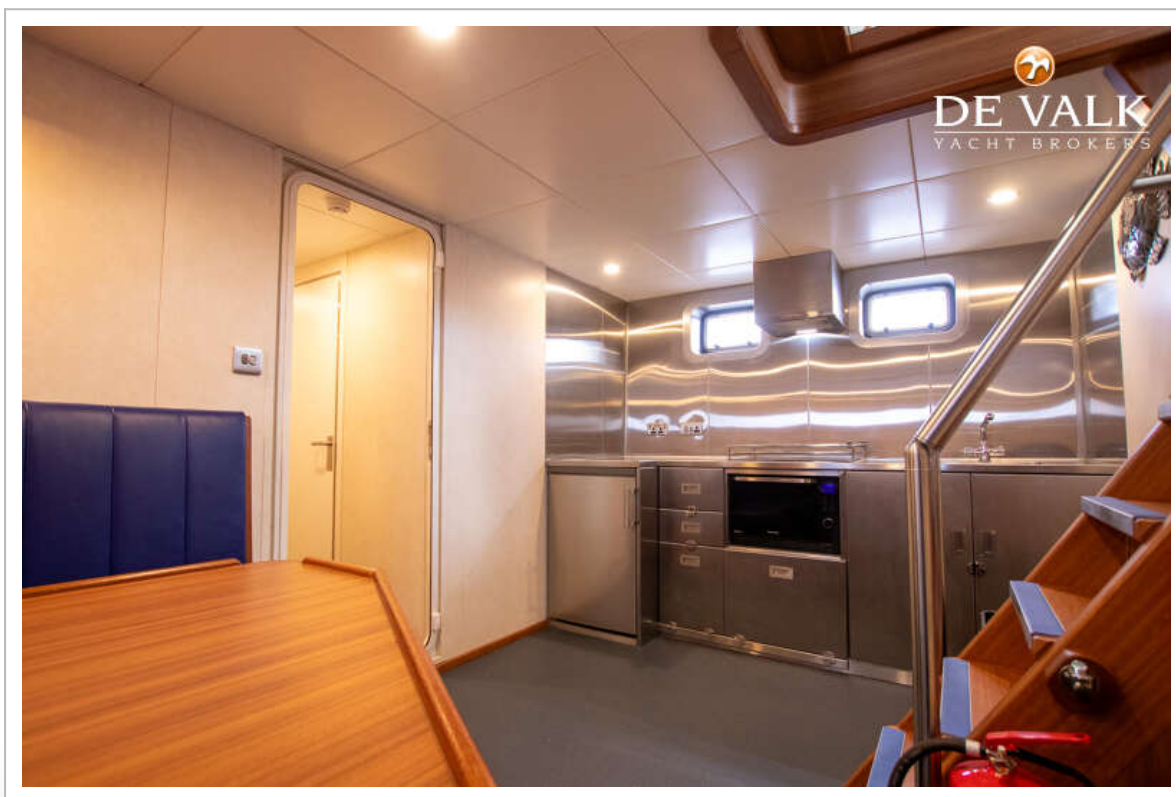
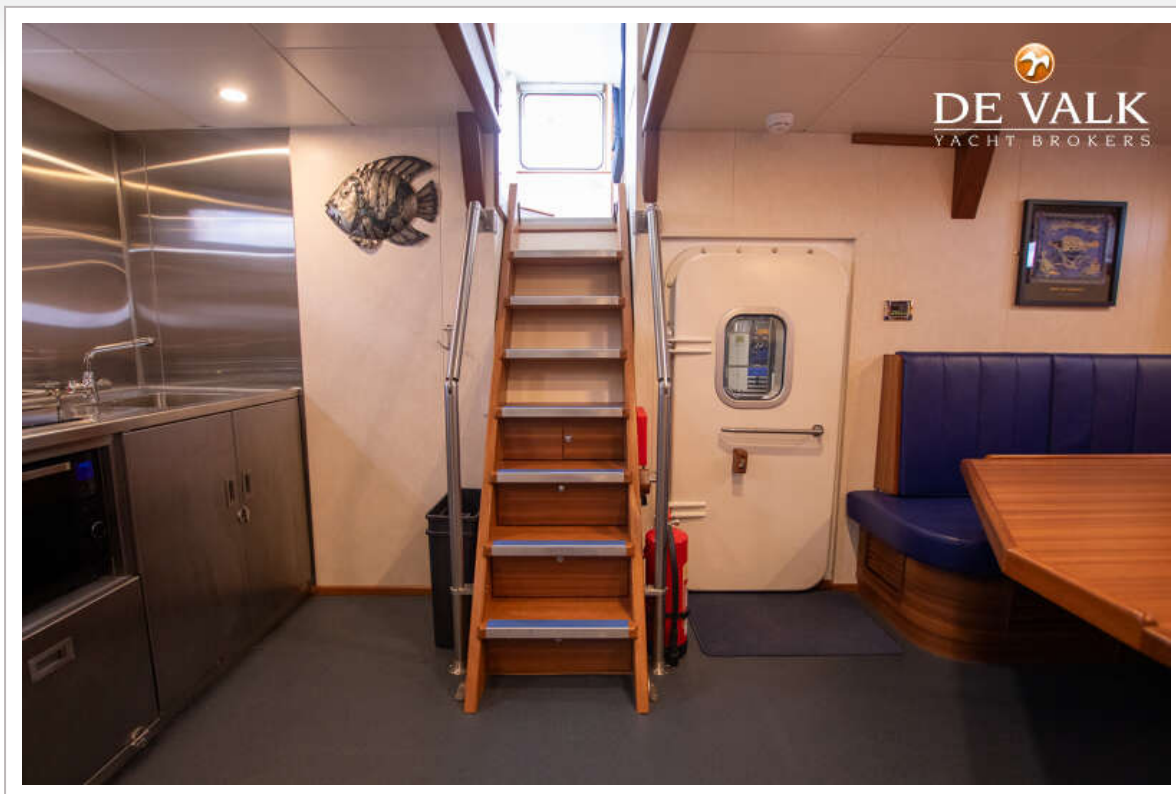




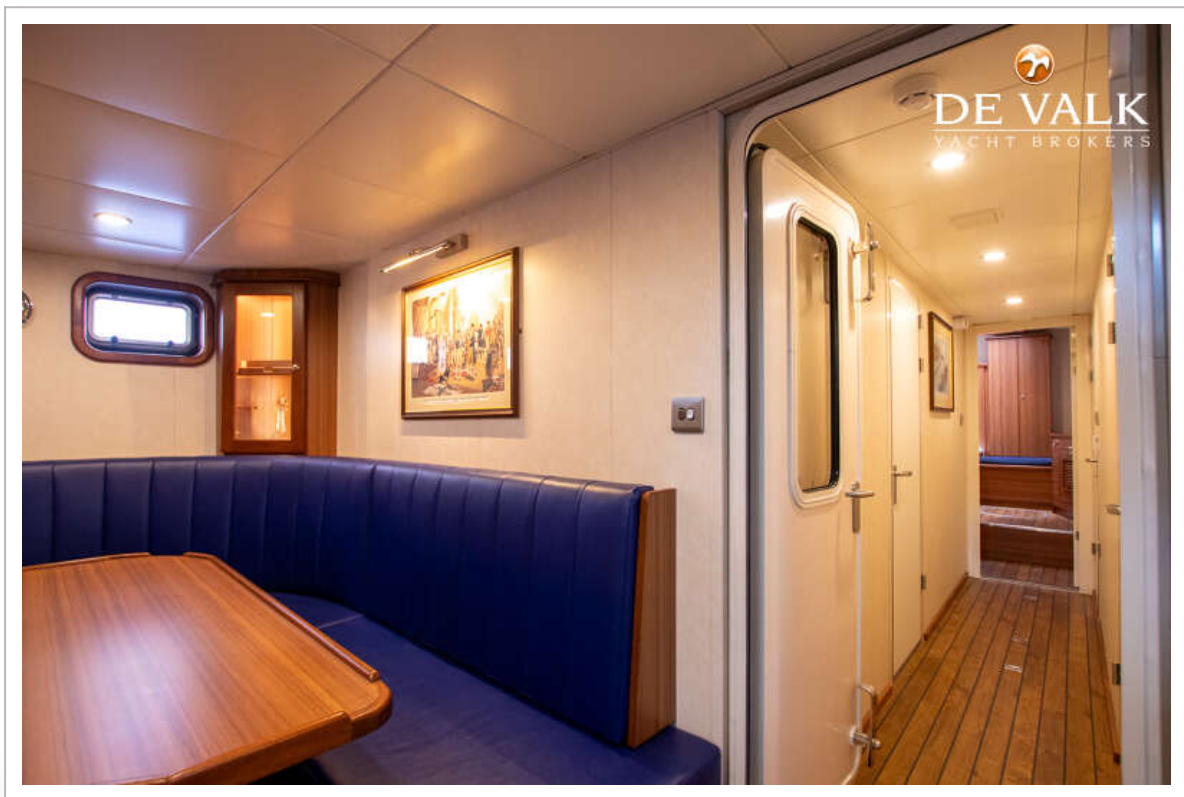
# EXPLORER MMS 55 TRAWLER



## EXPLORER MMS 55 TRAWLER

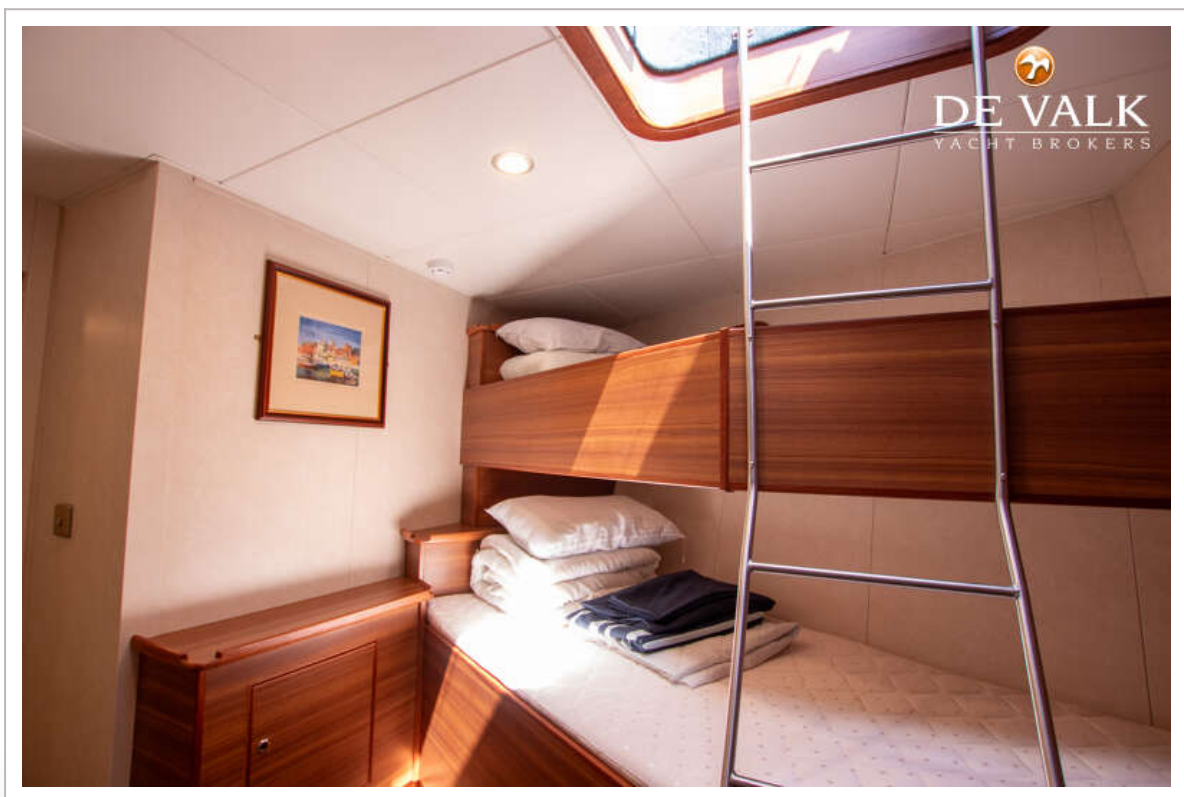
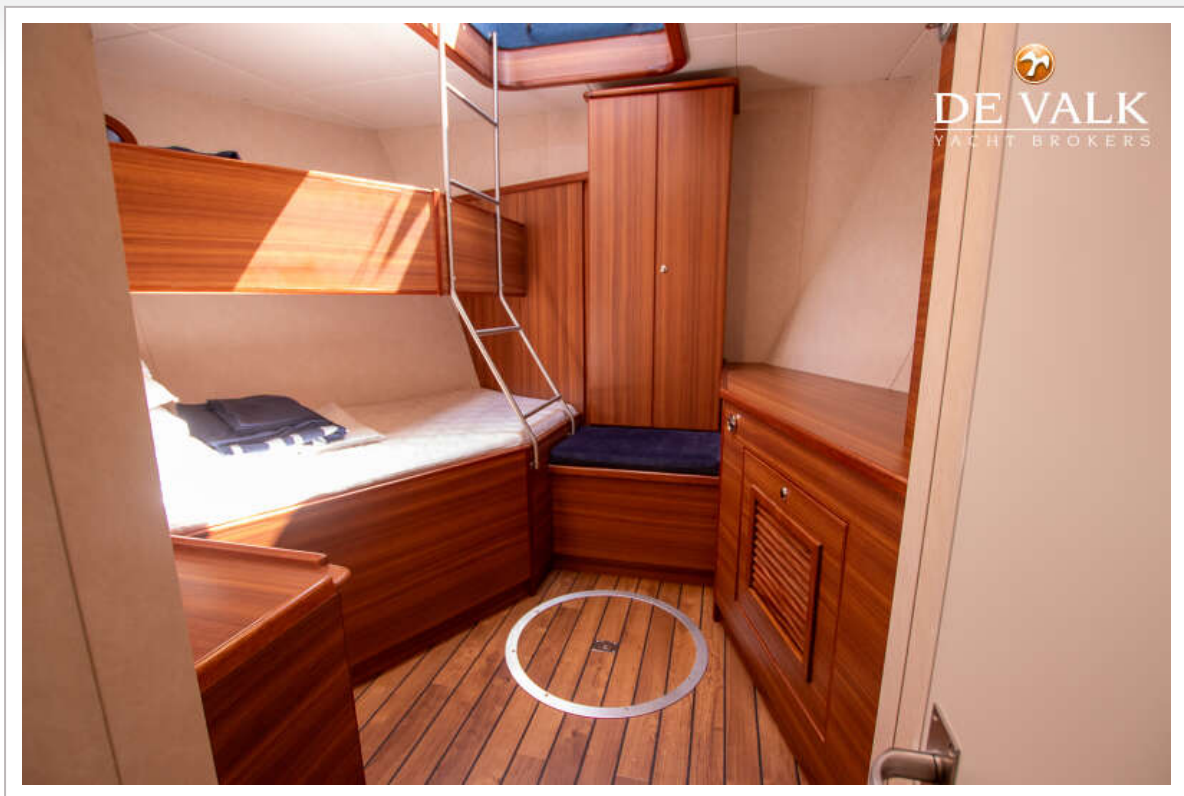


# EXPLORER MMS 55 TRAWLER

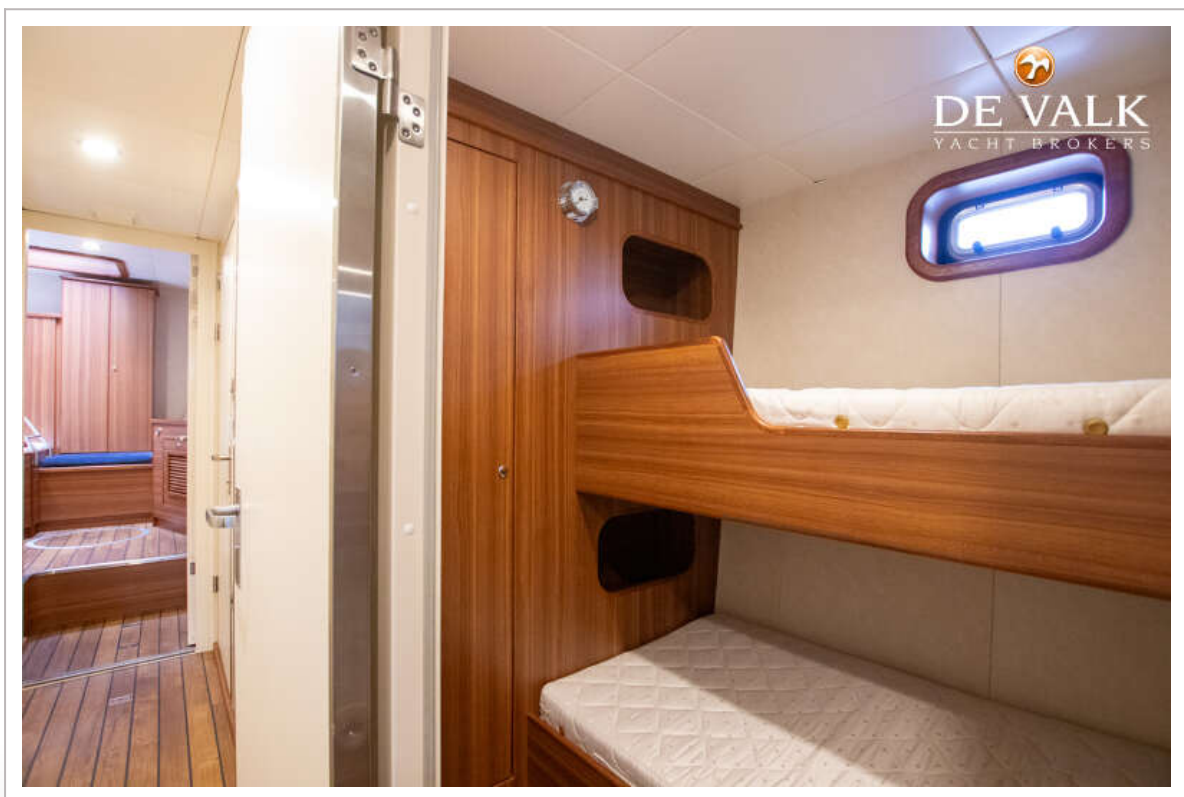
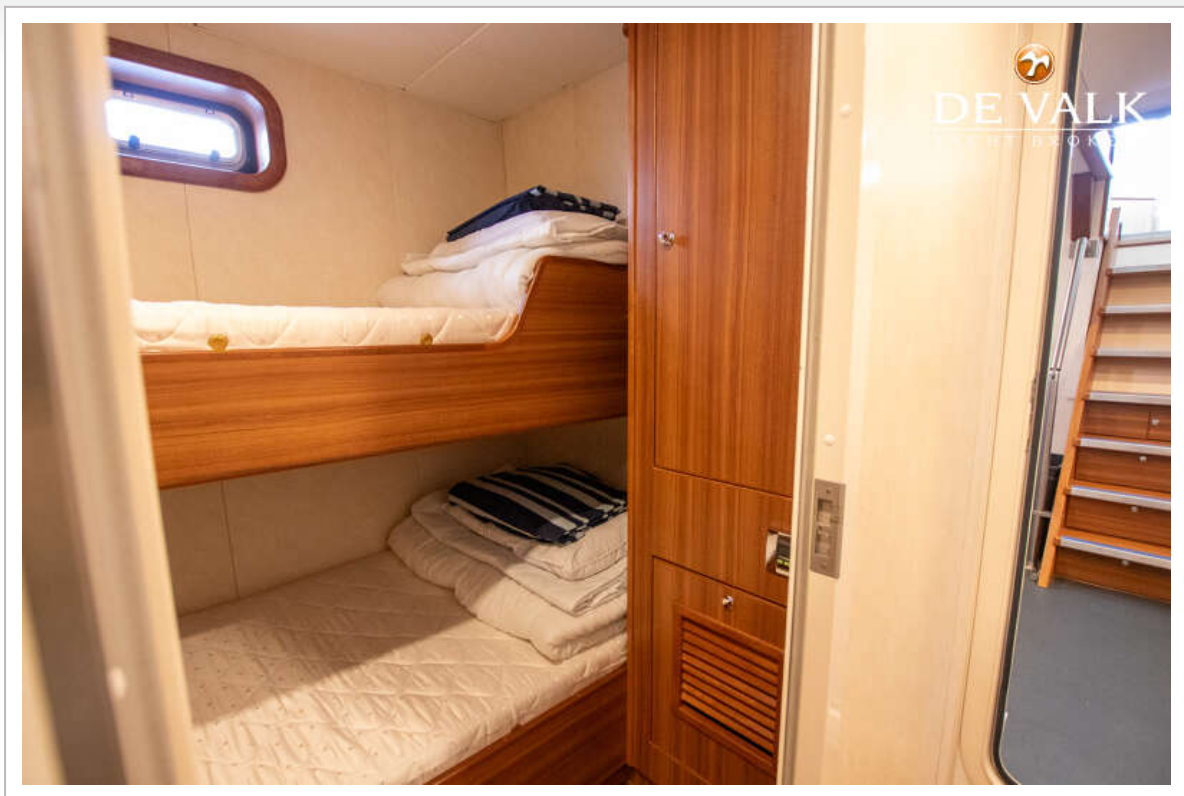




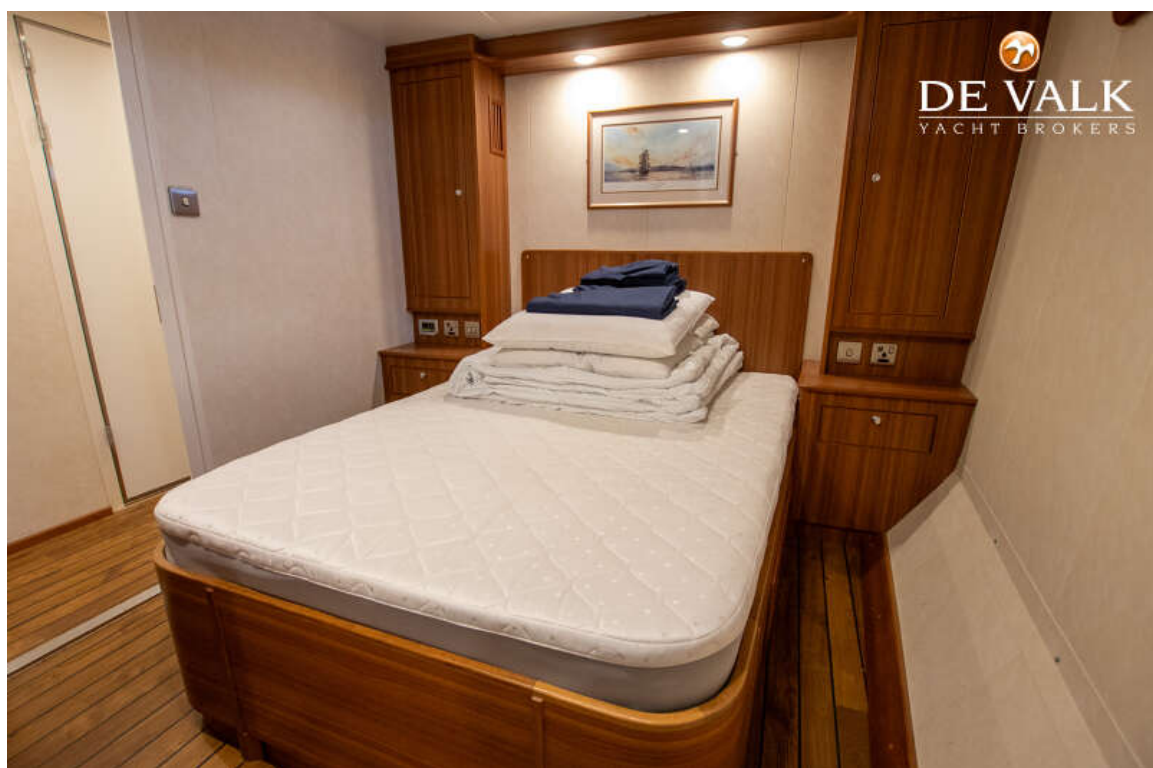
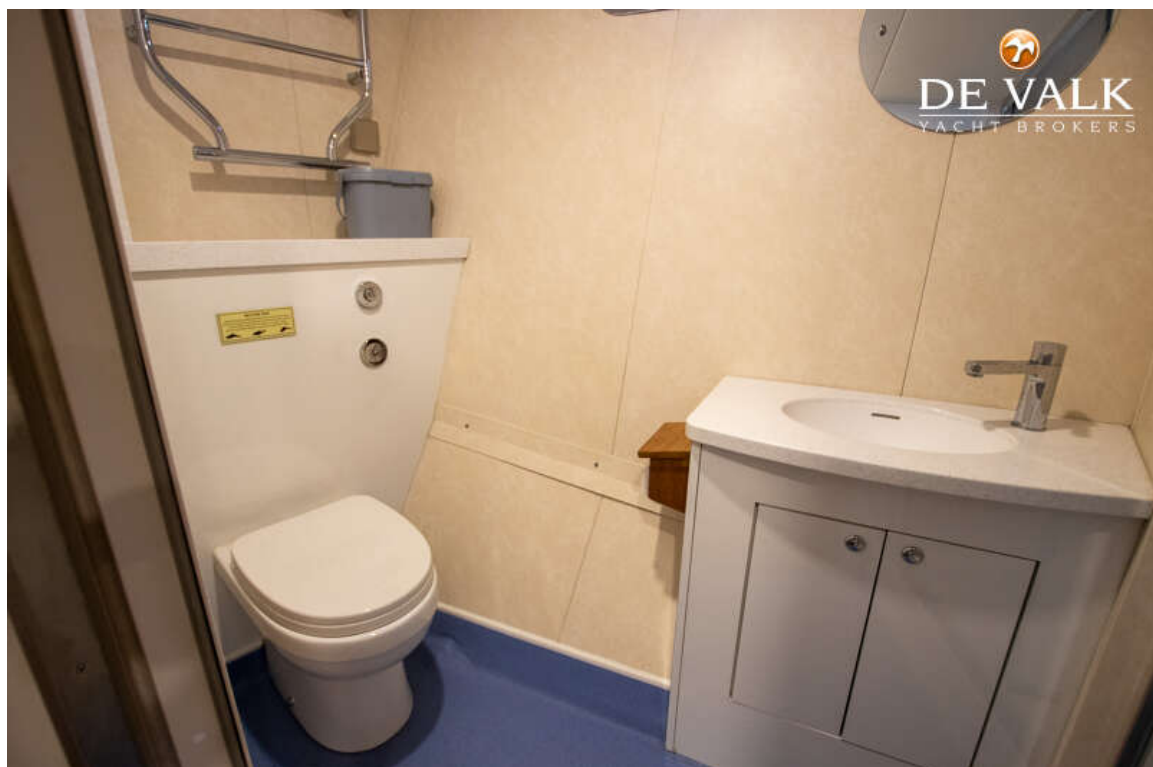
## EXPLORER MMS 55 TRAWLER



# EXPLORER MMS 55 TRAWLER

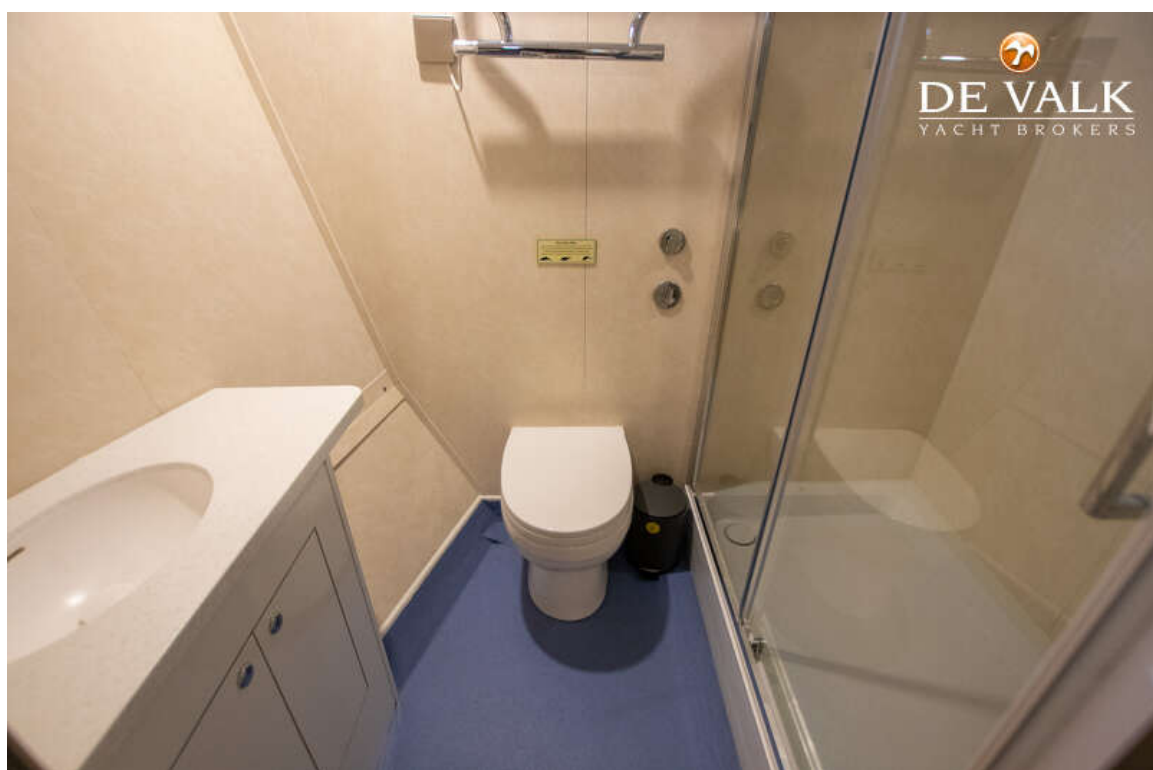


## EXPLORER MMS 55 TRAWLER





## EXPLORER MMS 55 TRAWLER

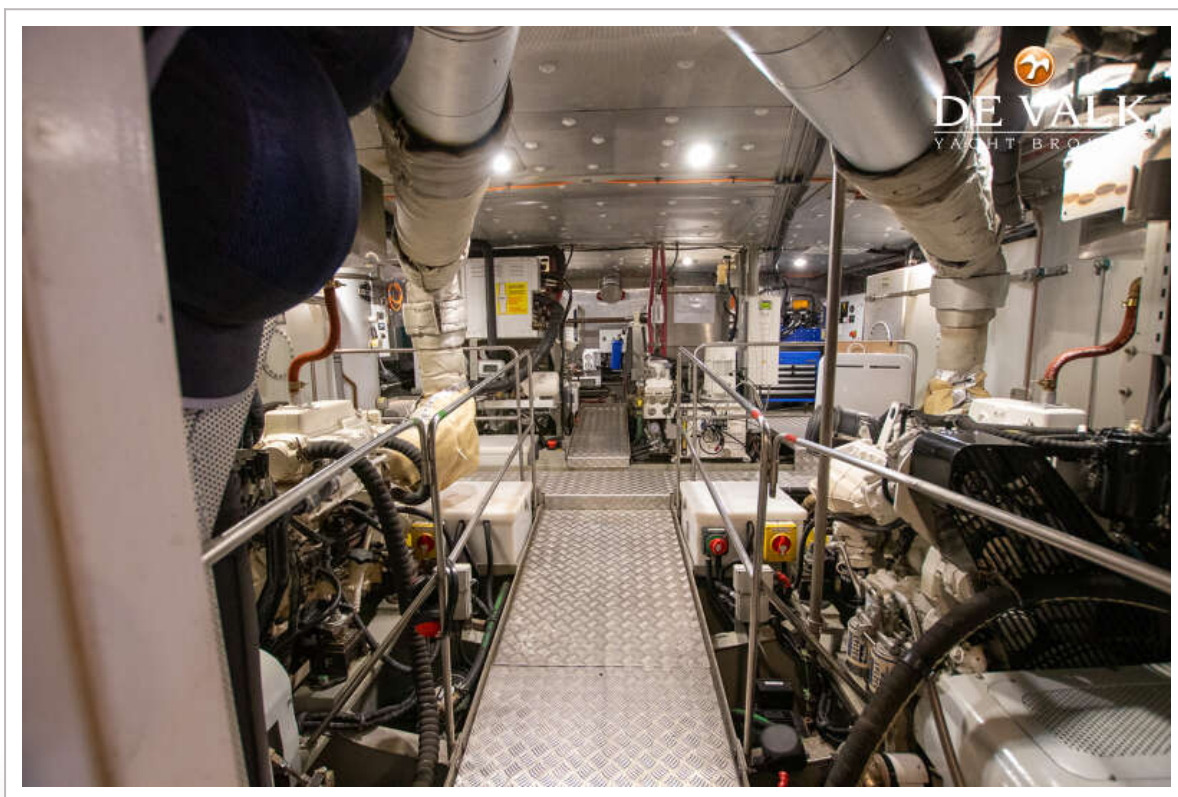


# EXPLORER MMS 55 TRAWLER

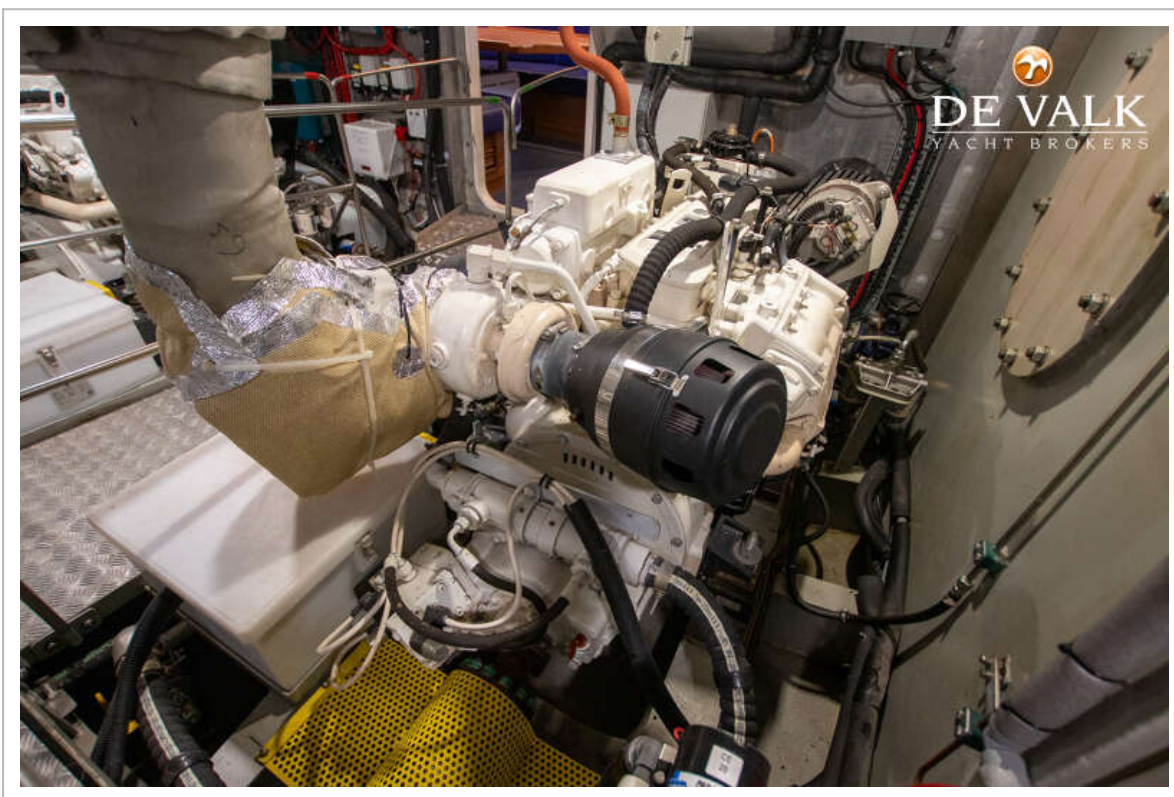
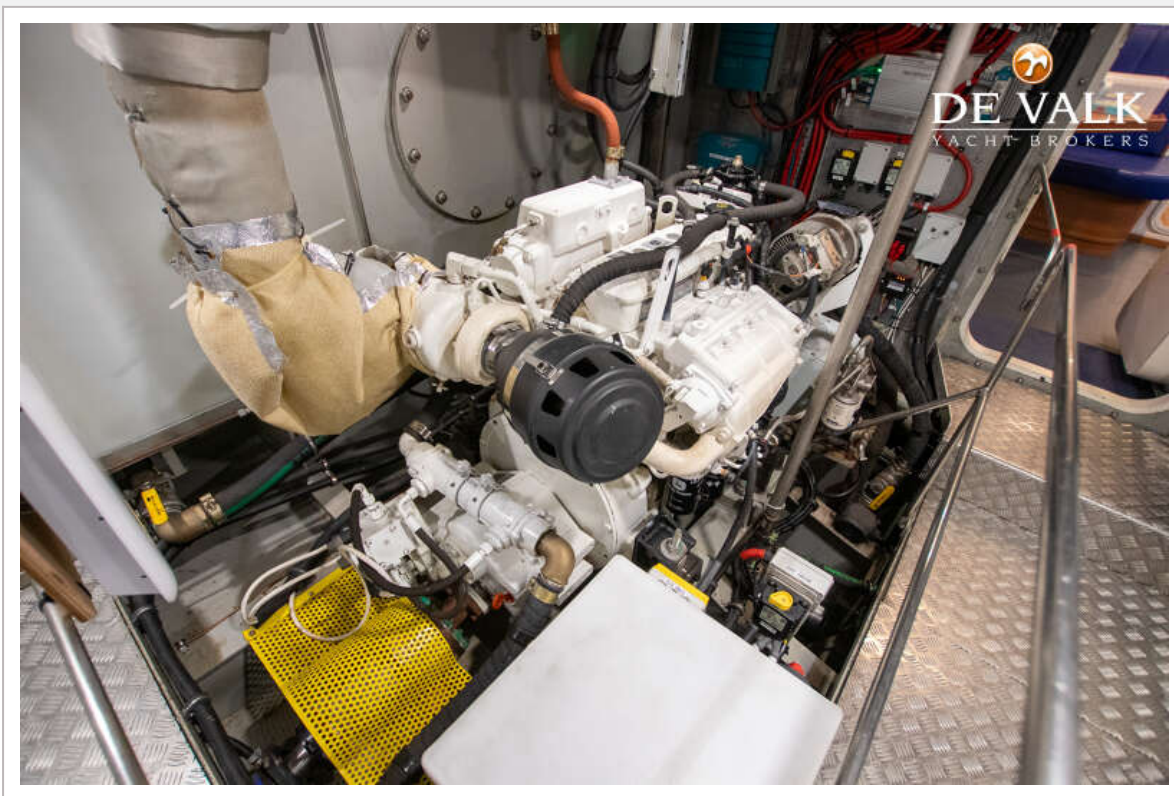




# EXPLORER MMS 55 TRAWLER

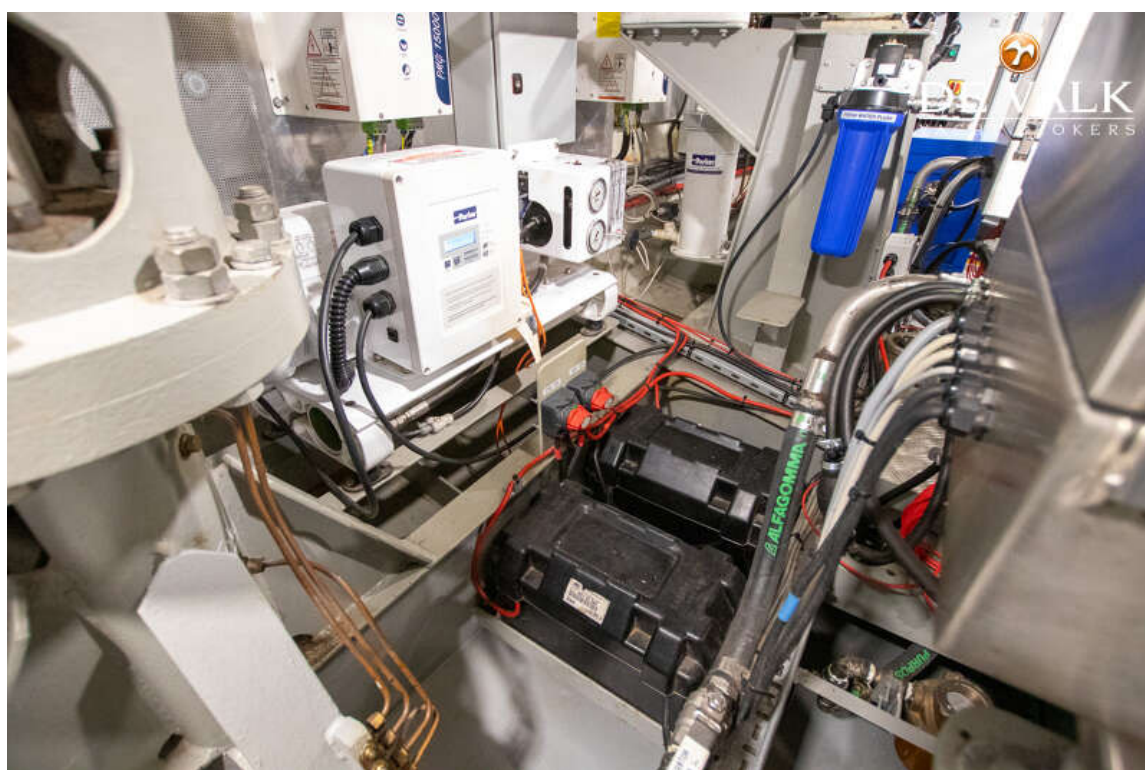


# EXPLORER MMS 55 TRAWLER





# EXPLORER MMS 55 TRAWLER



# EXPLORER MMS 55 TRAWLER

